

Data Path : Z:\pestpcbsrv\HPCHEM1\ECD_S\Data\PS061625\
 Data File : PS030707.D
 Signal(s) : Signal #1: ECD1A.ch Signal #2: ECD2B.ch
 Acq On : 16 Jun 2025 21:50
 Operator : AR\AJ
 Sample : Q2296-13
 Misc :
 ALS Vial : 18 Sample Multiplier: 1

Instrument :
 ECD_S
 ClientSampleId :

Integration File signal 1: autoint1.e
 Integration File signal 2: autoint2.e
 Quant Time: Jun 17 04:16:42 2025
 Quant Method : Z:\pestpcbsrv\HPCHEM1\ECD_S\Method\PS061625.M
 Quant Title : 8080.M
 QLast Update : Mon Jun 16 11:52:28 2025
 Response via : Initial Calibration
 Integrator: ChemStation

Volume Inj. : 1 µl
 Signal #1 Phase : ZB-MR2 Signal #2 Phase: ZB-MR2
 Signal #1 Info : 30M x 0.32mm x0.5 Signal #2 Info : 30M x 0.32mm x 0.25µm

Compound	RT#1	RT#2	Resp#1	Resp#2	ng/ml	ng/ml
System Monitoring Compounds						
4) S 2,4-DCAA	7.351	7.768	1842.1E6	600.0E6	489.827	555.702
Target Compounds						
1) T Dalapon	0.000	2.690	0	1116.4E6	N.D.	396.702
2) T 3,5-DICHL...	6.508	6.723	-13957285	9301576	N.D.	5.750
3) T 4-Nitroph...	7.141	7.328f	15130725	35186383	9.281	20.639 #
5) T DICAMBA	7.543	7.974	31358777	26101230	2.004	3.937 #
6) T MCPP	7.737	0.000	11069109	0	1.164	N.D. #
7) T MCPA	7.851f	8.339	4582984	9515733	<MDL	2.968 #
8) T DICHLORPROP	8.274	8.684	25971433	26324552	7.067	17.179 #
9) T 2,4-D	8.478	0.000	76799839	0	22.586	N.D. #
10) T Pentachlo...	8.796	9.552	115.4E6	138.4E6	2.233	3.649 #
11) T 2,4,5-TP ...	9.380	9.926	37472659	154.7E6	1.873	10.777 #
12) T 2,4,5-T	9.672	10.358	60371080	238.1E6	3.631	17.267 #
13) T 2,4-DB	10.239	10.891f	304.7E6	53897705	123.307	45.424 #
14) T DINOSEB	11.469	11.319	62226444	245.8E6	4.394	22.433 #
15) T Picloram	11.279	12.420	553.1E6	731.9E6	33.129	30.527
16) T DCPA	11.743	12.355	85885949	90166422	3.306	4.199 #

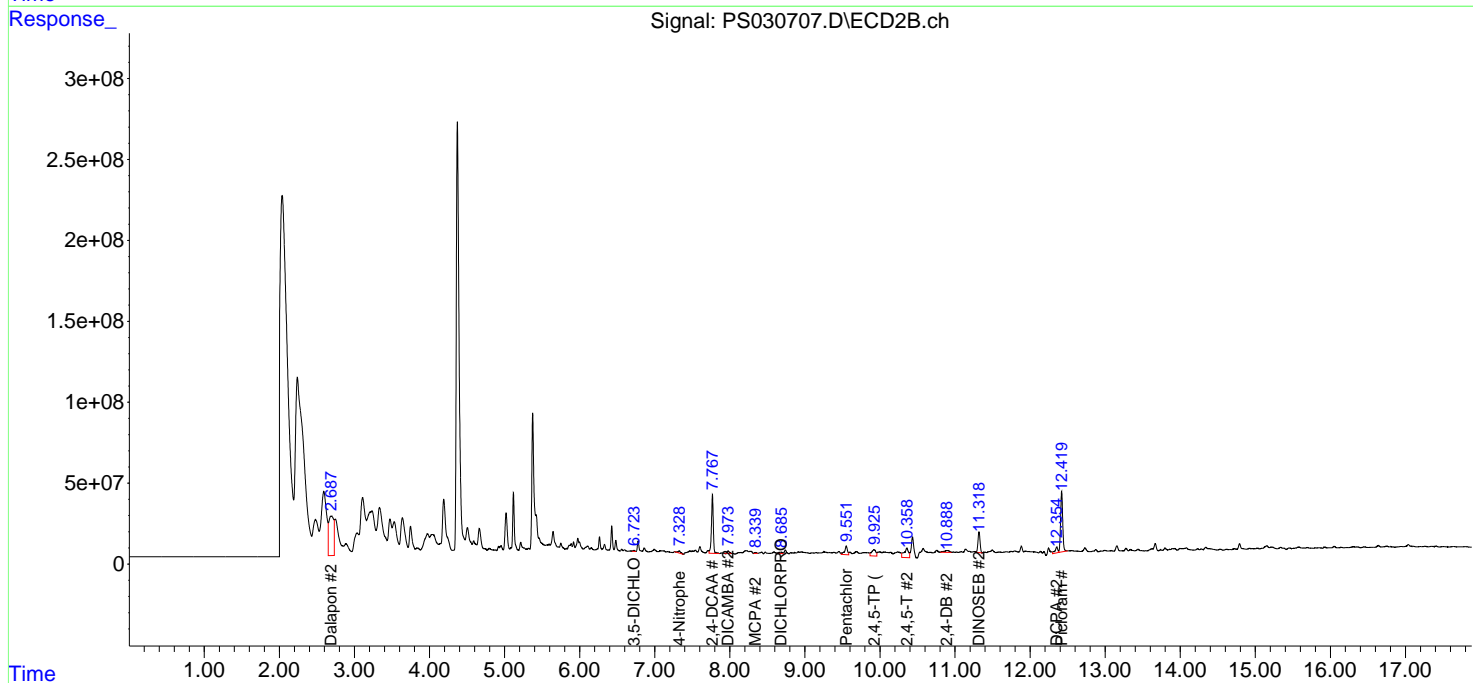
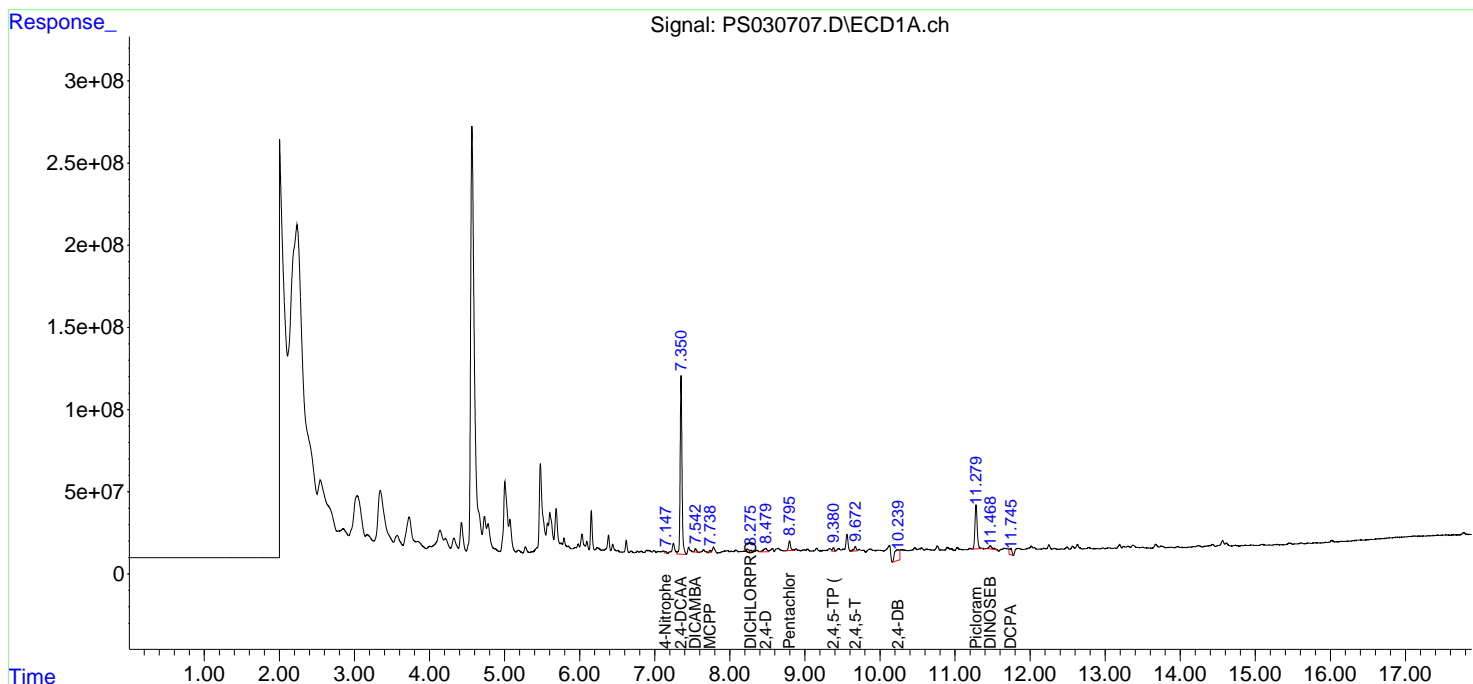
(f)=RT Delta > 1/2 Window (#)=Amounts differ by > 25% (m)=manual int.

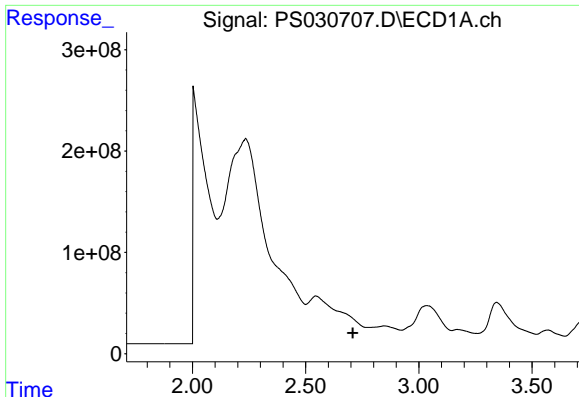
Data Path : Z:\pestpcbsrv\HPCHEM1\ECD_S\Data\PS061625\
 Data File : PS030707.D
 Signal(s) : Signal #1: ECD1A.ch Signal #2: ECD2B.ch
 Acq On : 16 Jun 2025 21:50
 Operator : AR\AJ
 Sample : Q2296-13
 Misc :
 ALS Vial : 18 Sample Multiplier: 1

Instrument :
 ECD_S
 ClientSampleId :

Integration File signal 1: autoint1.e
 Integration File signal 2: autoint2.e
 Quant Time: Jun 17 04:16:42 2025
 Quant Method : Z:\pestpcbsrv\HPCHEM1\ECD_S\Method\PS061625.M
 Quant Title : 8080.M
 QLast Update : Mon Jun 16 11:52:28 2025
 Response via : Initial Calibration
 Integrator: ChemStation

Volume Inj. : 1 µl
 Signal #1 Phase : ZB-MR1 Signal #2 Phase: ZB-MR2
 Signal #1 Info : 30M x 0.32mm x0.5 Signal #2 Info : 30M x 0.32mm x 0.25µm

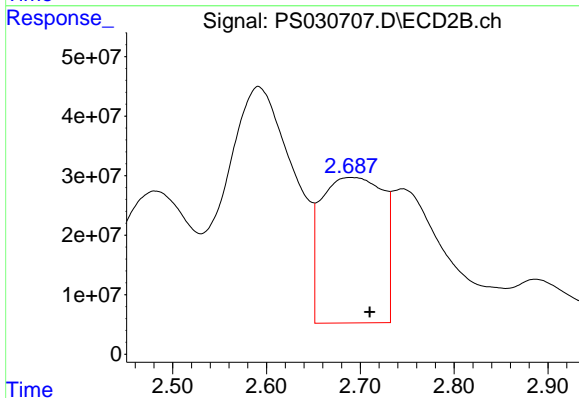




#1 Dalapon

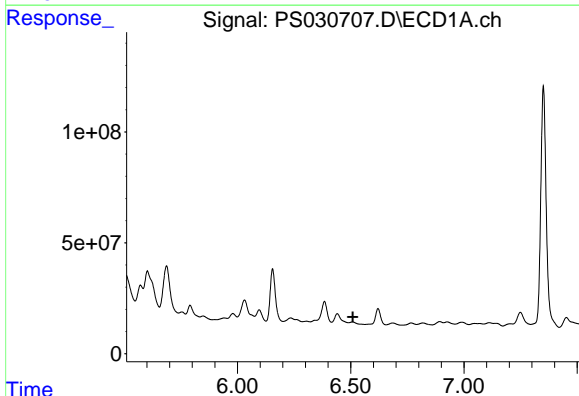
R.T.: 0.000 min
 Exp R.T.: 2.709 min
 Response: 0
 Conc: N.D.

Instrument :
 ECD_S
 ClientSampleId :



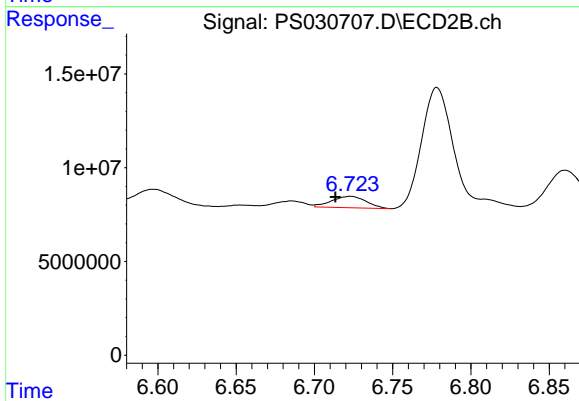
#1 Dalapon

R.T.: 2.690 min
 Delta R.T.: -0.020 min
 Response: 1116383389
 Conc: 396.70 ng/ml



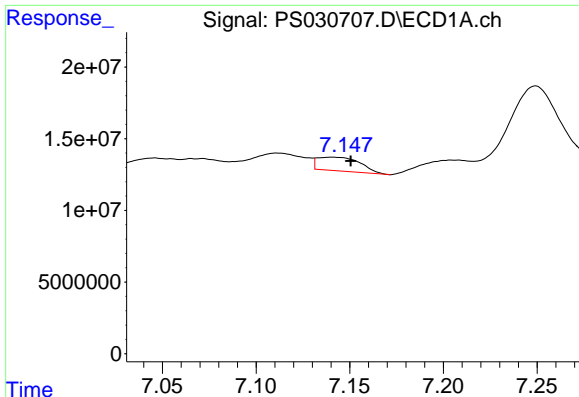
#2 3,5-DICHLOROBENZOIC ACID

R.T.: 6.508 min
 Delta R.T.: -0.002 min
 Response: -13957285
 Conc: N.D.



#2 3,5-DICHLOROBENZOIC ACID

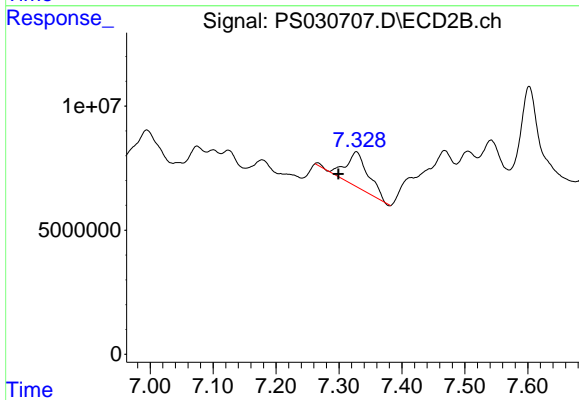
R.T.: 6.723 min
 Delta R.T.: 0.009 min
 Response: 9301576
 Conc: 5.75 ng/ml



#3 4-Nitrophenol

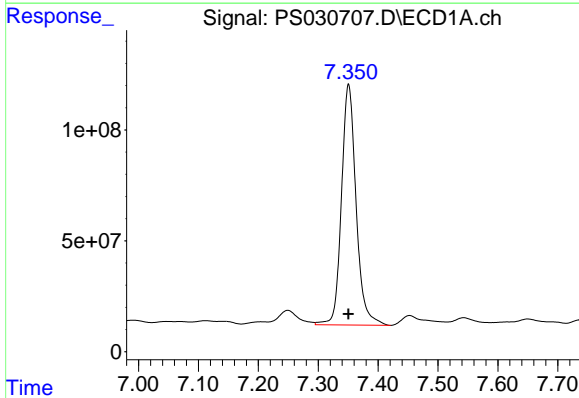
R.T.: 7.141 min
 Delta R.T.: -0.010 min
 Response: 15130725
 Conc: 9.28 ng/ml

Instrument :
 ECD_S
 ClientSampleId :



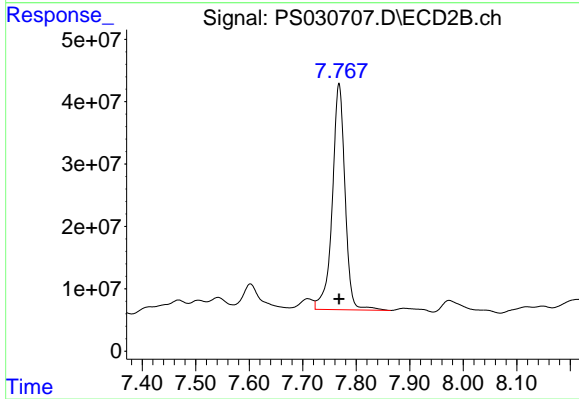
#3 4-Nitrophenol

R.T.: 7.328 min
 Delta R.T.: 0.028 min
 Response: 35186383
 Conc: 20.64 ng/ml



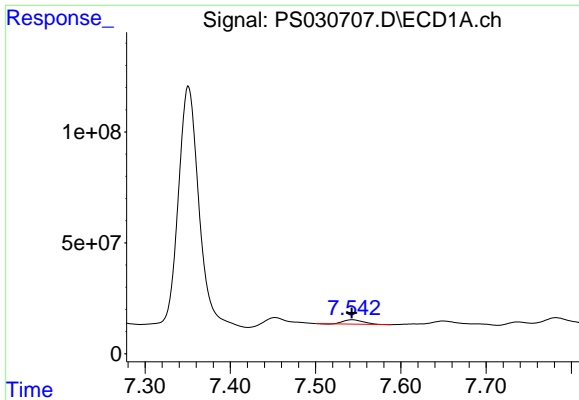
#4 2,4-DCAA

R.T.: 7.351 min
 Delta R.T.: 0.000 min
 Response: 1842149657
 Conc: 489.83 ng/ml



#4 2,4-DCAA

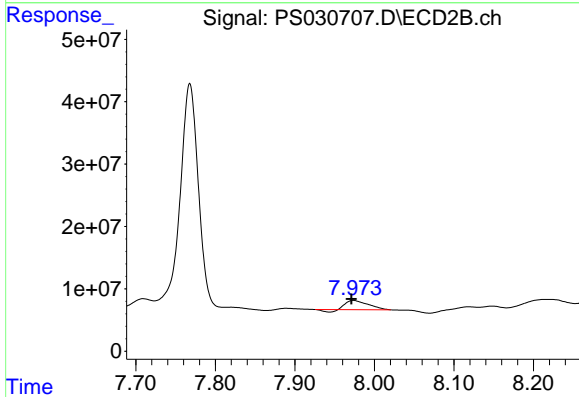
R.T.: 7.768 min
 Delta R.T.: 0.000 min
 Response: 599986143
 Conc: 555.70 ng/ml



#5 DICAMBA

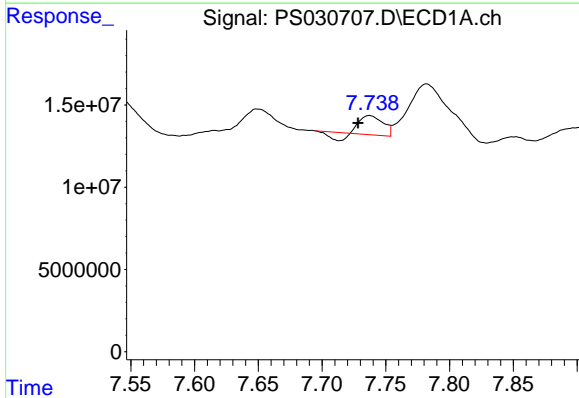
R.T.: 7.543 min
 Delta R.T.: 0.000 min
 Response: 31358777
 Conc: 2.00 ng/ml

Instrument :
 ECD_S
 ClientSampleId :



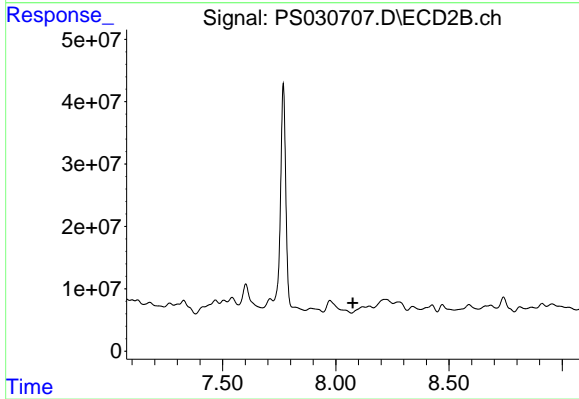
#5 DICAMBA

R.T.: 7.974 min
 Delta R.T.: 0.003 min
 Response: 26101230
 Conc: 3.94 ng/ml



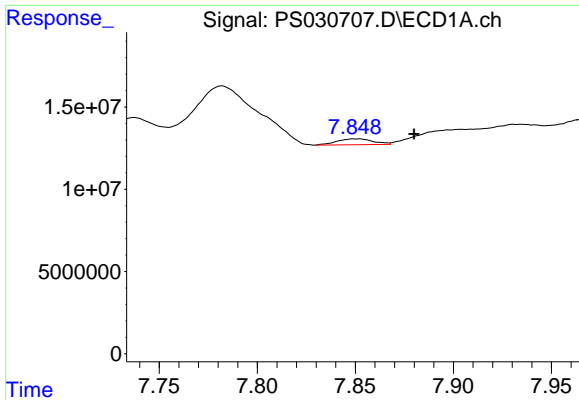
#6 MCPP

R.T.: 7.737 min
 Delta R.T.: 0.009 min
 Response: 11069109
 Conc: 1.16 ug/ml



#6 MCPP

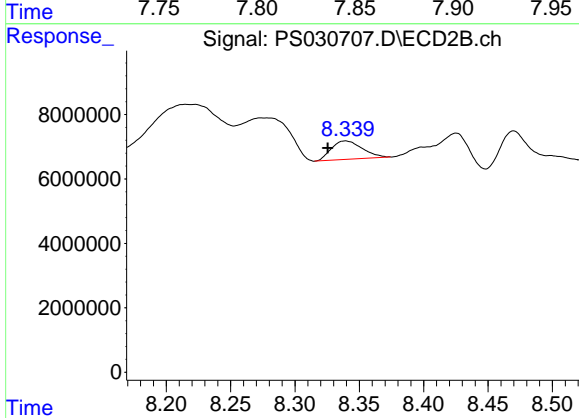
R.T.: 0.000 min
 Exp R.T. : 8.075 min
 Response: 0
 Conc: N.D.



#7 MCPA

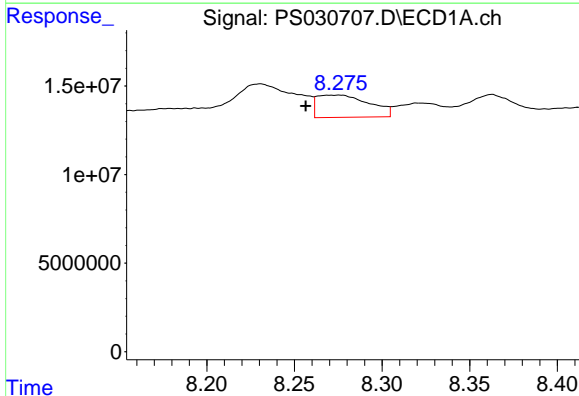
R.T.: 7.851 min
 Delta R.T.: -0.029 min
 Response: 4582984
 Conc: N.D.

Instrument :
 ECD_S
 ClientSampleId :



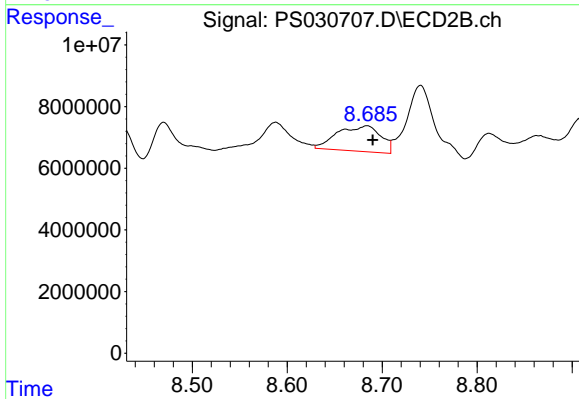
#7 MCPA

R.T.: 8.339 min
 Delta R.T.: 0.014 min
 Response: 9515733
 Conc: 2.97 ug/ml



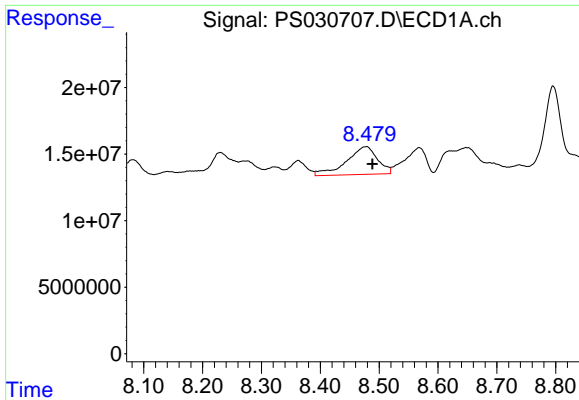
#8 DICHLORPROP

R.T.: 8.274 min
 Delta R.T.: 0.017 min
 Response: 25971433
 Conc: 7.07 ng/ml



#8 DICHLORPROP

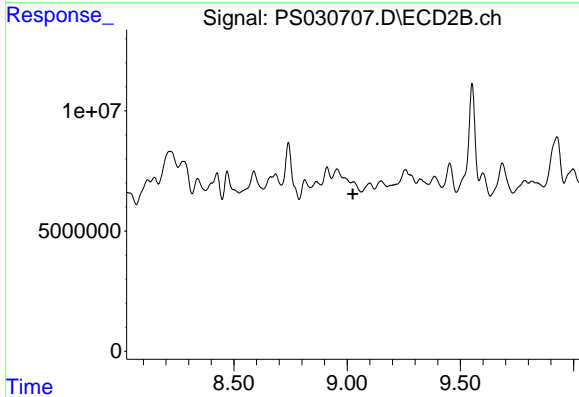
R.T.: 8.684 min
 Delta R.T.: -0.006 min
 Response: 26324552
 Conc: 17.18 ng/ml



#9 2,4-D

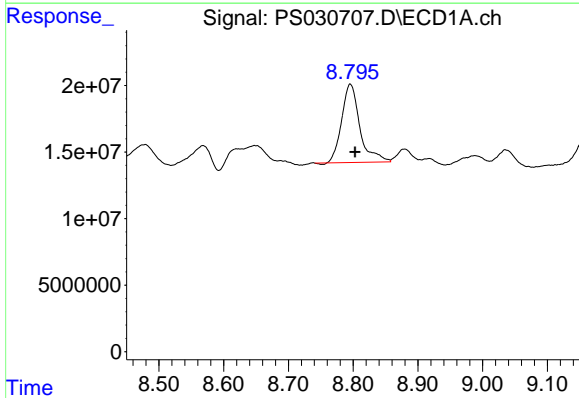
R.T.: 8.478 min
 Delta R.T.: -0.011 min
 Response: 76799839
 Conc: 22.59 ng/ml

Instrument :
 ECD_S
 ClientSampleId :



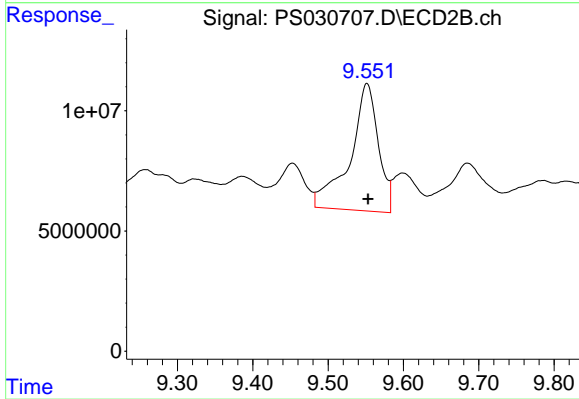
#9 2,4-D

R.T.: 0.000 min
 Exp R.T. : 9.025 min
 Response: 0
 Conc: N.D.



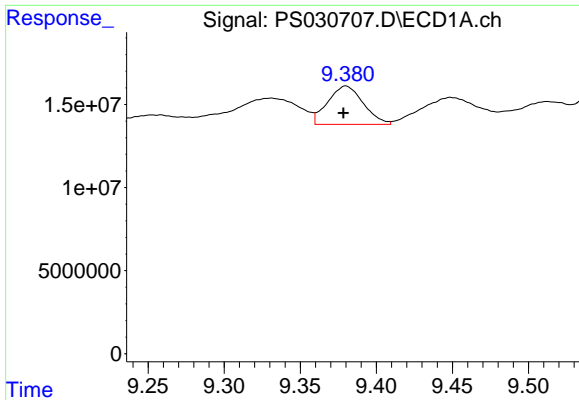
#10 Pentachlorophenol

R.T.: 8.796 min
 Delta R.T.: -0.007 min
 Response: 115426680
 Conc: 2.23 ng/ml



#10 Pentachlorophenol

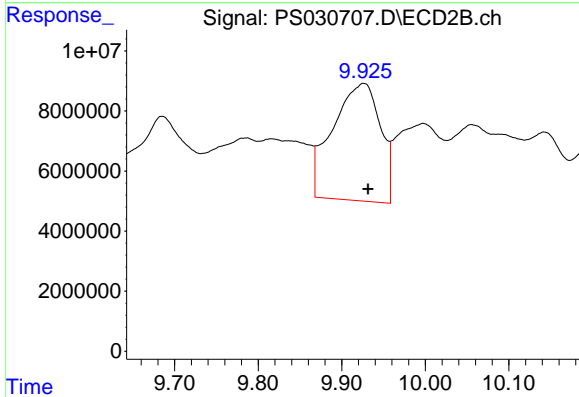
R.T.: 9.552 min
 Delta R.T.: -0.001 min
 Response: 138422384
 Conc: 3.65 ng/ml



#11 2,4,5-TP (SILVEX)

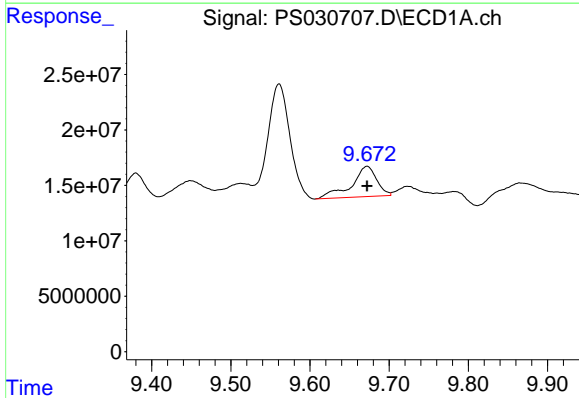
R.T.: 9.380 min
 Delta R.T.: 0.002 min
 Response: 37472659
 Conc: 1.87 ng/ml

Instrument :
 ECD_S
 ClientSampleId :



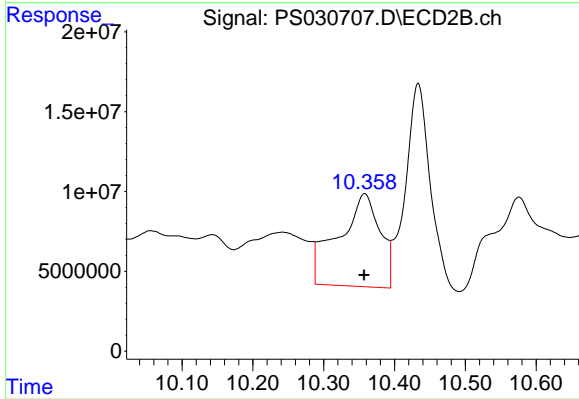
#11 2,4,5-TP (SILVEX)

R.T.: 9.926 min
 Delta R.T.: -0.005 min
 Response: 154692578
 Conc: 10.78 ng/ml



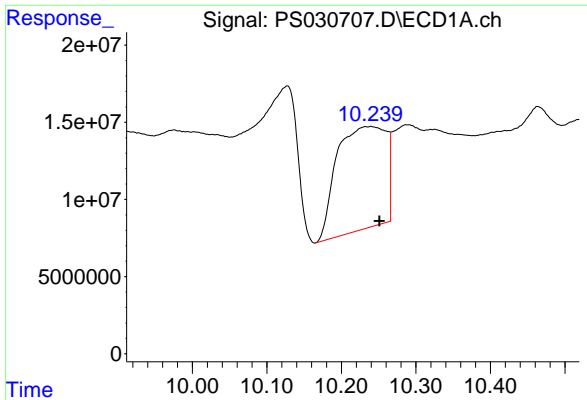
#12 2,4,5-T

R.T.: 9.672 min
 Delta R.T.: 0.000 min
 Response: 60371080
 Conc: 3.63 ng/ml



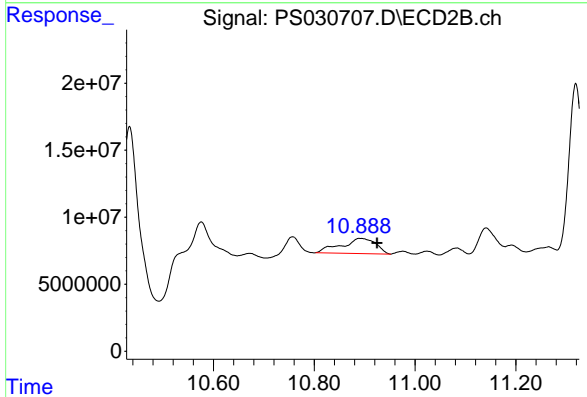
#12 2,4,5-T

R.T.: 10.358 min
 Delta R.T.: 0.000 min
 Response: 238088545
 Conc: 17.27 ng/ml

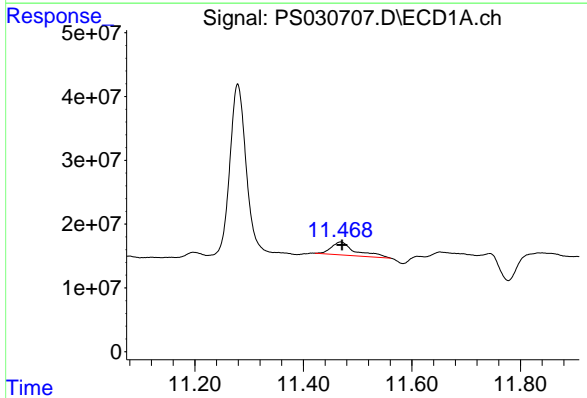


#13 2,4-DB
 R.T.: 10.239 min
 Delta R.T.: -0.012 min
 Response: 304711413
 Conc: 123.31 ng/ml

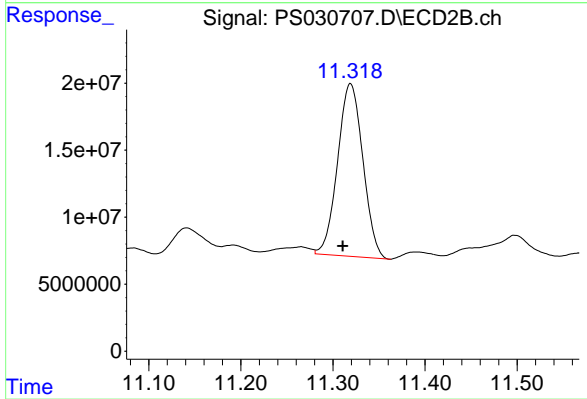
Instrument :
 ECD_S
 ClientSampleId :



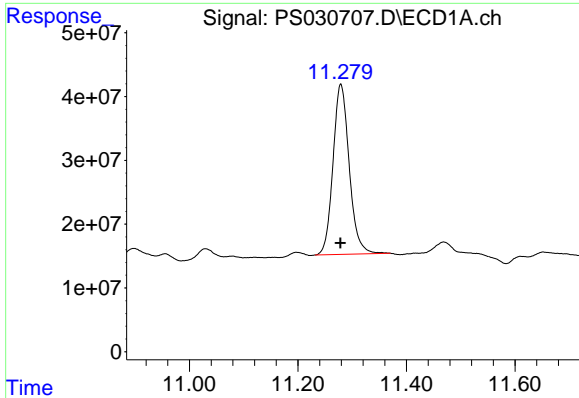
#13 2,4-DB
 R.T.: 10.891 min
 Delta R.T.: -0.033 min
 Response: 53897705
 Conc: 45.42 ng/ml



#14 DINOSEB
 R.T.: 11.469 min
 Delta R.T.: -0.003 min
 Response: 62226444
 Conc: 4.39 ng/ml



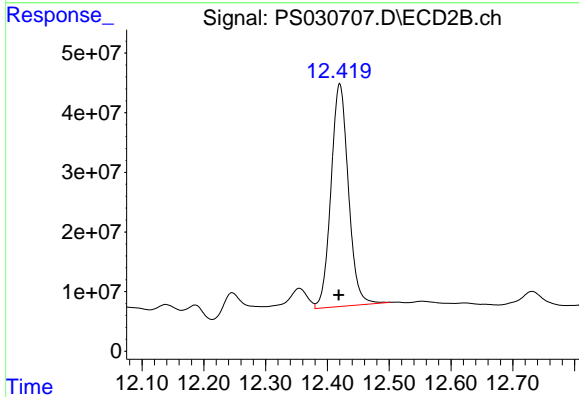
#14 DINOSEB
 R.T.: 11.319 min
 Delta R.T.: 0.009 min
 Response: 245808244
 Conc: 22.43 ng/ml



#15 Picloram

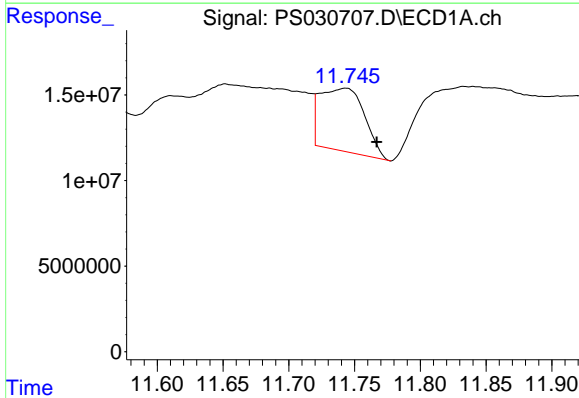
R.T.: 11.279 min
 Delta R.T.: 0.000 min
 Response: 553121897
 Conc: 33.13 ng/ml

Instrument :
 ECD_S
 ClientSampleId :



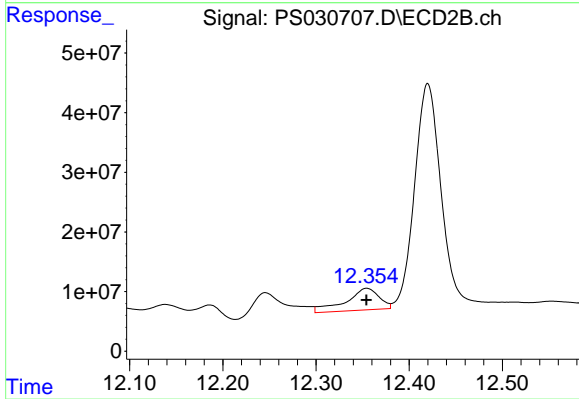
#15 Picloram

R.T.: 12.420 min
 Delta R.T.: 0.001 min
 Response: 731912618
 Conc: 30.53 ng/ml



#16 DCPA

R.T.: 11.743 min
 Delta R.T.: -0.024 min
 Response: 85885949
 Conc: 3.31 ng/ml



#16 DCPA

R.T.: 12.355 min
 Delta R.T.: 0.000 min
 Response: 90166422
 Conc: 4.20 ng/ml