

Data Path : Z:\pestpcbsrv\HPCHEM1\ECD_S\Data\PS061718\
 Data File : PS000417.D
 Signal(s) : Signal #1: ECD1A.ch Signal #2: ECD2B.ch
 Acq On : 17 Jun 2018 19:35
 Operator : UA
 Sample : J3464-11
 Misc :
 ALS Vial : 17 Sample Multiplier: 1

Instrument :
 ECD_S
 ClientSampleId :

Integration File signal 1: autoint1.e
 Integration File signal 2: autoint2.e
 Quant Time: Jun 18 12:02:37 2018
 Quant Method : \\TERASTORAGE\Terastorage\pestpcbsrv\HPCHEM1\ECD_S\Method\PS061718.M
 Quant Title : 8080.M
 QLast Update : Mon Jun 18 00:27:44 2018
 Response via : Initial Calibration
 Integrator: ChemStation

Volume Inj. : 2 µl
 Signal #1 Phase : Rtx-CLPesticides Signal #2 Phase: Rtx-CLPesticides2
 Signal #1 Info : 30M x 0.32mm x0.5 Signal #2 Info : 30M x 0.32mm x 0.25µm

Compound	RT#1	RT#2	Resp#1	Resp#2	ng/ml	ng/ml

System Monitoring Compounds						
4) S 2,4-DCAA	11.846	11.222	161.5E6	134.0E6	428.773	393.668
Target Compounds						
1) T Dalapon	3.144	2.530	1009298	1602260	1.973	3.675 #
2) T 3,5-DICHL...	0.000	9.369	0	1299708	N.D.	2.825 #
3) T 4-Nitroph...	0.000	10.379	0	6880547	N.D.	35.112 #
5) T DICAMBA	0.000	11.466	0	7673646	N.D.	6.194 #
6) T MCPP	12.451	0.000	682247	0	0.602	N.D. #
7) T MCPA	12.758	0.000	1199816	0	0.683	N.D. #
8) T DICHLORPROP	13.345	12.636	1503055	1955307	3.996	6.073 #
9) T 2,4-D	13.727	13.077	723141	1262474	1.512	2.971 #
10) T Pentachlo...	14.117	13.667	2569618	583656	0.489	0.123 #
11) T 2,4,5-TP ...	0.000	14.299	0	2760683	N.D.	1.419 #
12) T 2,4,5-T	0.000	14.814	0	2352103	N.D.	1.391 #
13) T 2,4-DB	0.000	15.499	0	733491	N.D.	2.963 #
14) T DINOSEB	17.637	15.954	5500428	1705786	3.694	1.308 #
15) T Picloram	17.399	17.175	8034549	10251950	2.751	4.110 #
16) T DCPA	17.992	17.120	5919492	4346227	2.310	1.885

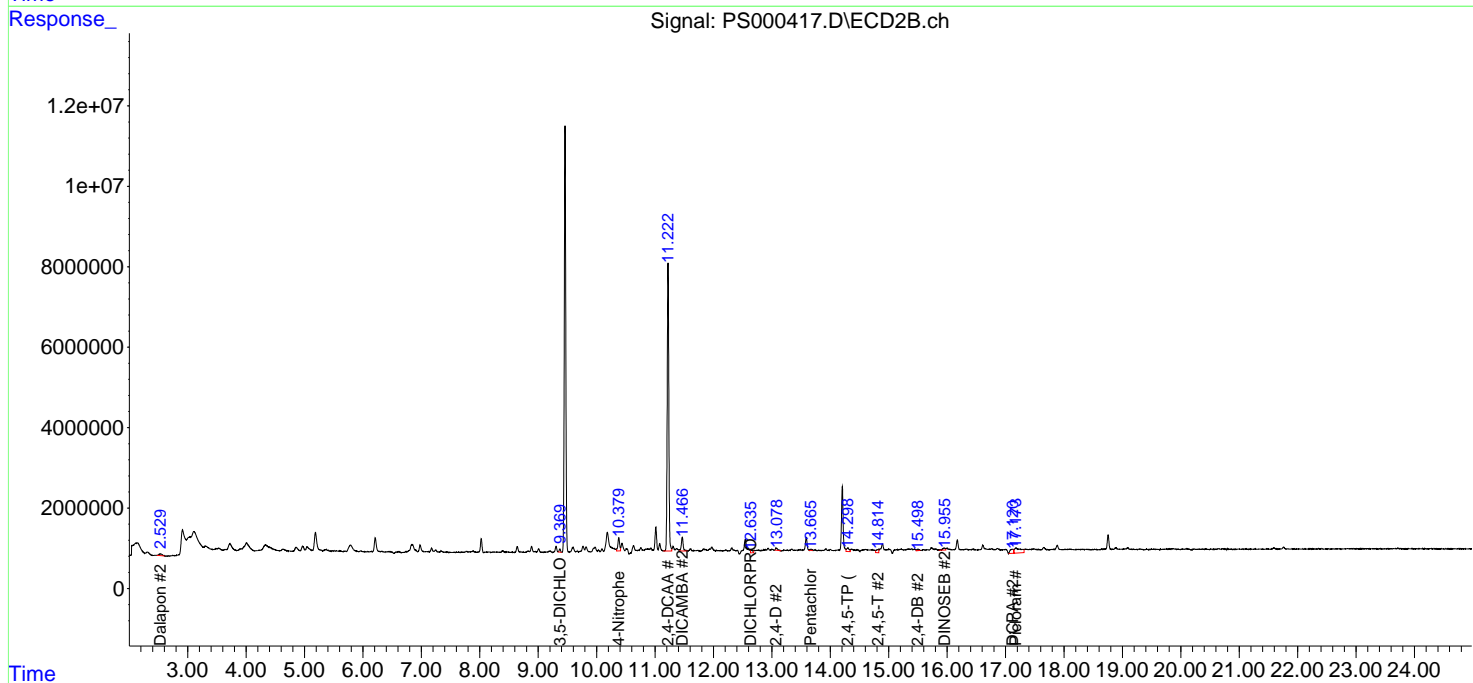
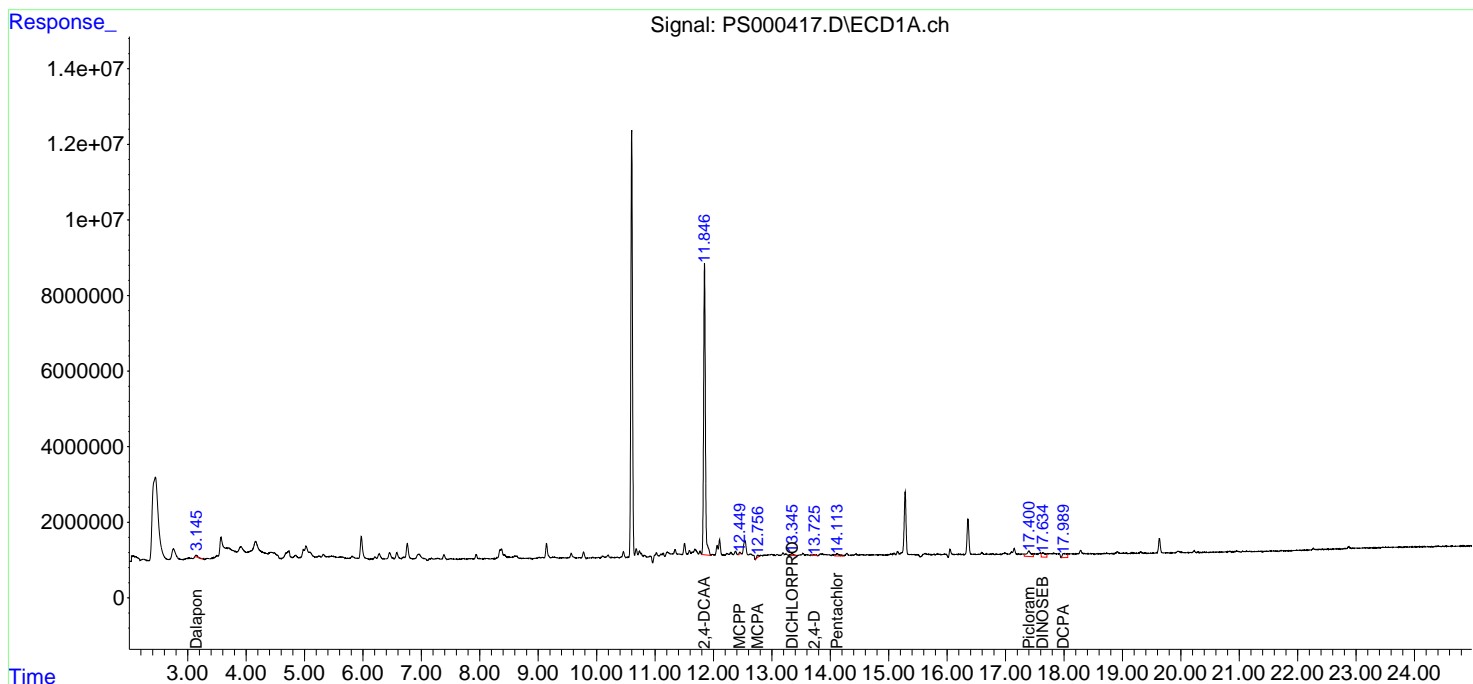
(f)=RT Delta > 1/2 Window (#)=Amounts differ by > 25% (m)=manual int.

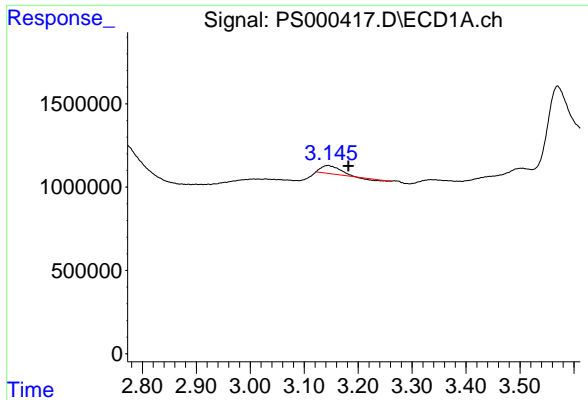
Data Path : Z:\pestpcbsrv\HPCHEM1\ECD_S\Data\PS061718\
 Data File : PS000417.D
 Signal(s) : Signal #1: ECD1A.ch Signal #2: ECD2B.ch
 Acq On : 17 Jun 2018 19:35
 Operator : UA
 Sample : J3464-11
 Misc :
 ALS Vial : 17 Sample Multiplier: 1

Instrument :
 ECD_S
 ClientSampled :

Integration File signal 1: autoint1.e
 Integration File signal 2: autoint2.e
 Quant Time: Jun 18 12:02:37 2018
 Quant Method : \\TERASTORAGE\Terastorage\pestpcbsrv\HPCHEM1\ECD_S\Method\PS061718.M
 Quant Title : 8080.M
 QLast Update : Mon Jun 18 00:27:44 2018
 Response via : Initial Calibration
 Integrator: ChemStation

Volume Inj. : 2 µl
 Signal #1 Phase : Rtx-CLPesticides Signal #2 Phase: Rtx-CLPesticides2
 Signal #1 Info : 30M x 0.32mm x0.5 Signal #2 Info : 30M x 0.32mm x 0.25µm

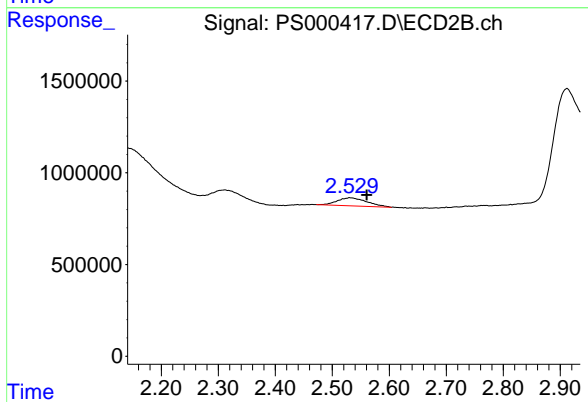




#1 Dalapon

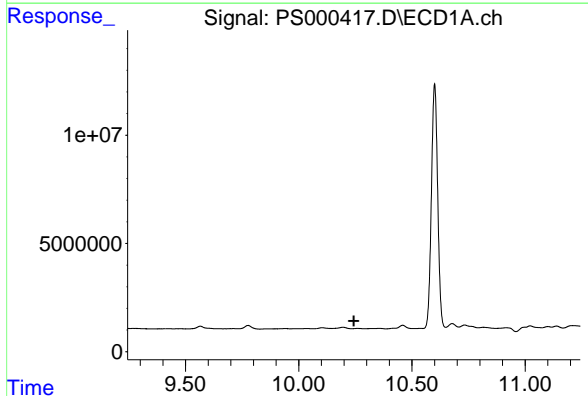
R.T.: 3.144 min
 Delta R.T.: -0.038 min
 Response: 1009298
 Conc: 1.97 ng/ml

Instrument :
 ECD_S
 ClientSampled :



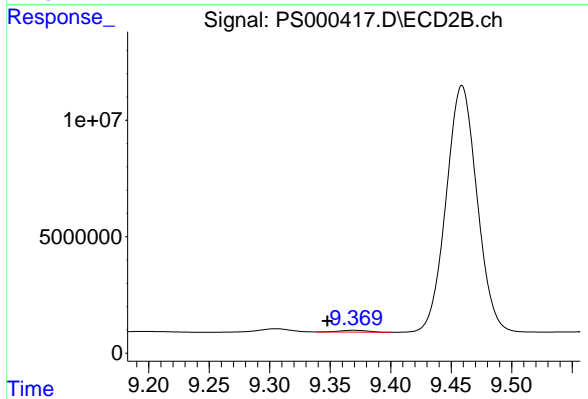
#1 Dalapon

R.T.: 2.530 min
 Delta R.T.: -0.030 min
 Response: 1602260
 Conc: 3.68 ng/ml



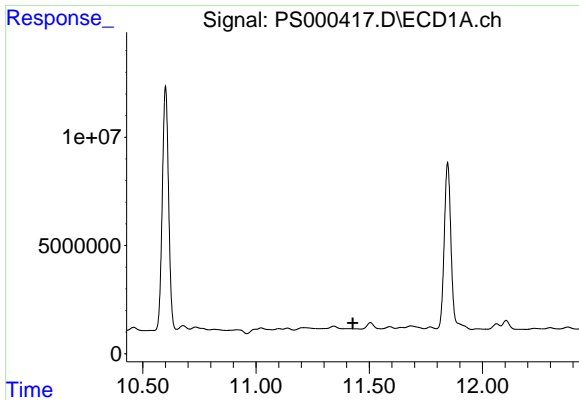
#2 3,5-DICHLOROBENZOIC ACID

R.T.: 0.000 min
 Exp R.T. : 10.244 min
 Response: 0
 Conc: N.D.



#2 3,5-DICHLOROBENZOIC ACID

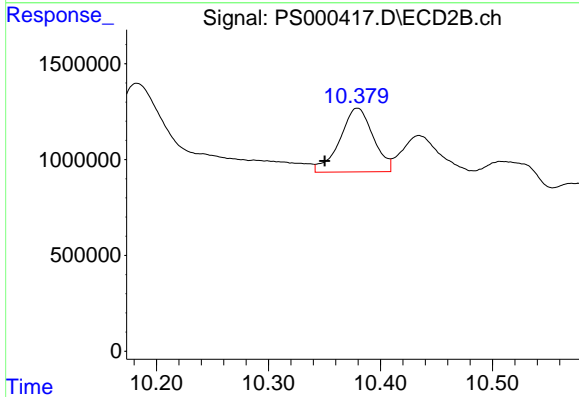
R.T.: 9.369 min
 Delta R.T.: 0.022 min
 Response: 1299708
 Conc: 2.83 ng/ml



#3 4-Nitrophenol

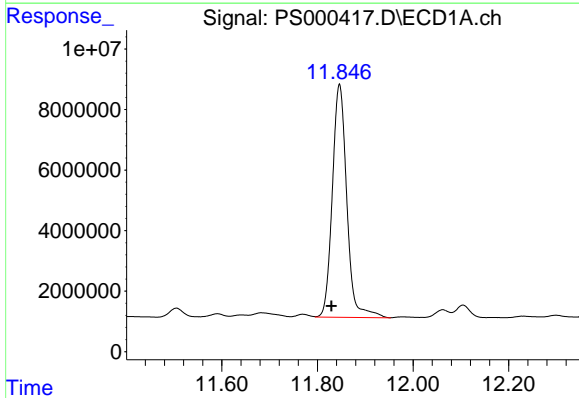
R.T.: 0.000 min
 Exp R.T.: 11.428 min
 Response: 0
 Conc: N.D.

Instrument :
 ECD_S
 ClientSampleId :



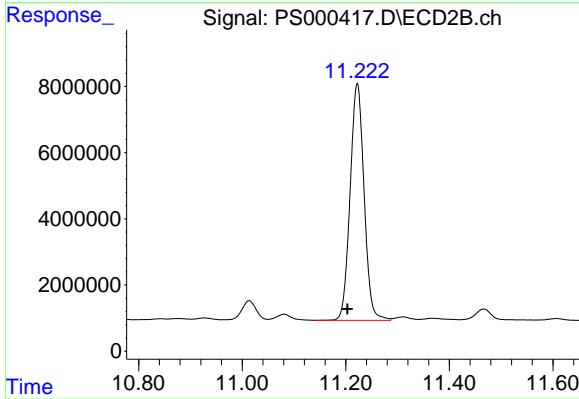
#3 4-Nitrophenol

R.T.: 10.379 min
 Delta R.T.: 0.029 min
 Response: 6880547
 Conc: 35.11 ng/ml



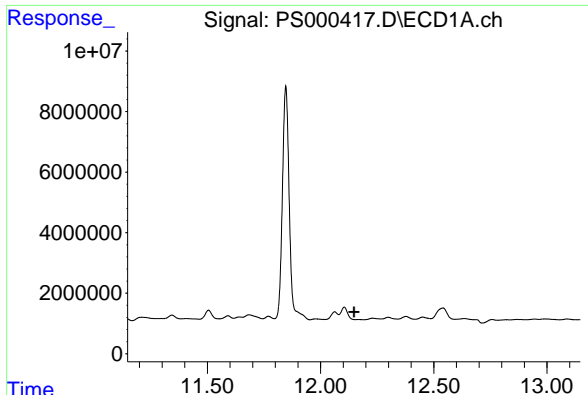
#4 2,4-DCAA

R.T.: 11.846 min
 Delta R.T.: 0.017 min
 Response: 161499566
 Conc: 428.77 ng/ml



#4 2,4-DCAA

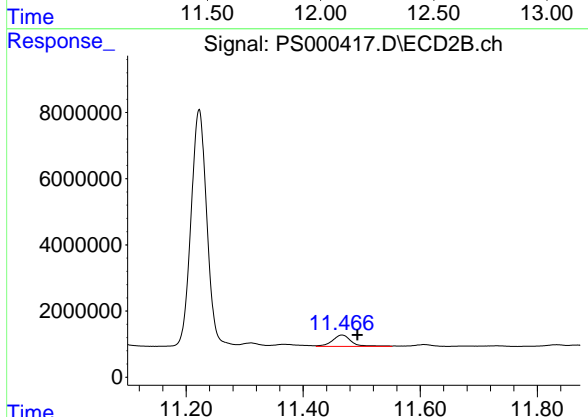
R.T.: 11.222 min
 Delta R.T.: 0.020 min
 Response: 133968707
 Conc: 393.67 ng/ml



#5 DICAMBA

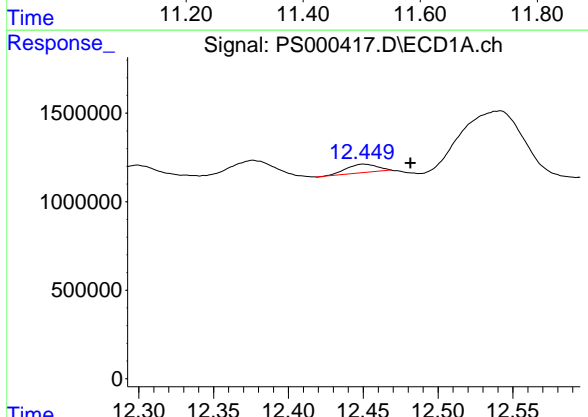
R.T.: 0.000 min
 Exp R.T.: 12.147 min
 Response: 0
 Conc: N.D.

Instrument :
 ECD_S
 ClientSampleId :



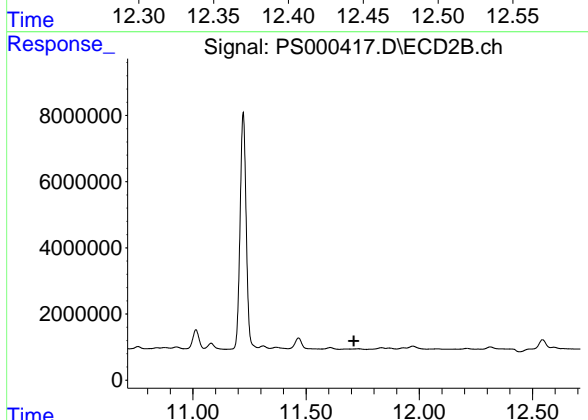
#5 DICAMBA

R.T.: 11.466 min
 Delta R.T.: -0.027 min
 Response: 7673646
 Conc: 6.19 ng/ml



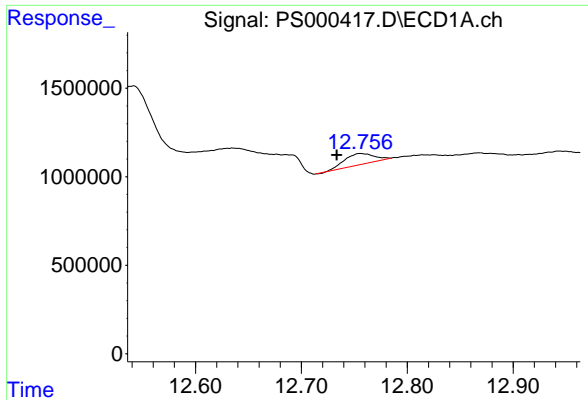
#6 MCPP

R.T.: 12.451 min
 Delta R.T.: -0.031 min
 Response: 682247
 Conc: 0.60 ug/ml



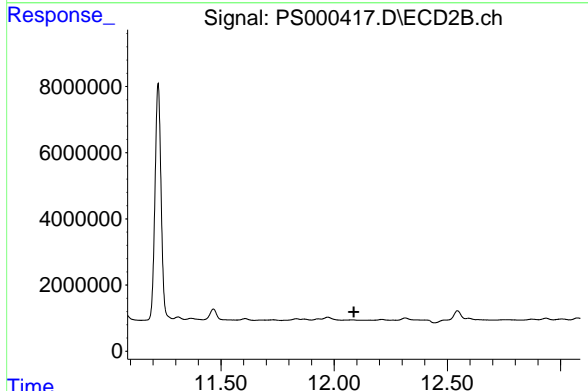
#6 MCPP

R.T.: 0.000 min
 Exp R.T.: 11.711 min
 Response: 0
 Conc: N.D.

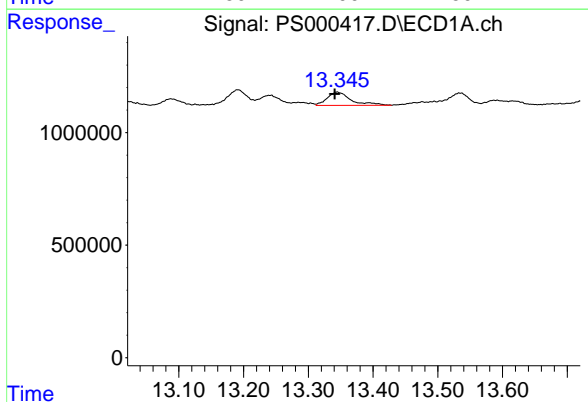


#7 MCPA
 R.T.: 12.758 min
 Delta R.T.: 0.024 min
 Response: 1199816
 Conc: 0.68 ug/ml

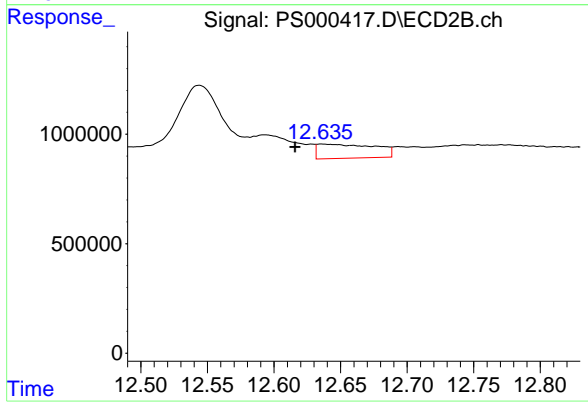
Instrument :
 ECD_S
 ClientSampleId :



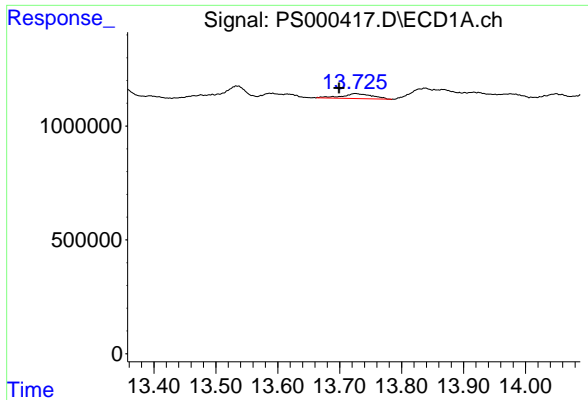
#7 MCPA
 R.T.: 0.000 min
 Exp R.T. : 12.087 min
 Response: 0
 Conc: N.D.



#8 DICHLORPROP
 R.T.: 13.345 min
 Delta R.T.: 0.004 min
 Response: 1503055
 Conc: 4.00 ng/ml

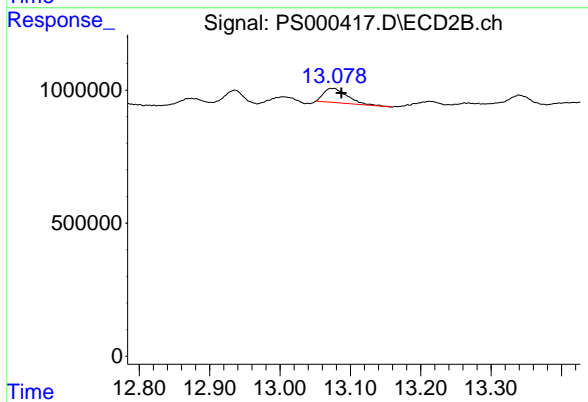


#8 DICHLORPROP
 R.T.: 12.636 min
 Delta R.T.: 0.020 min
 Response: 1955307
 Conc: 6.07 ng/ml

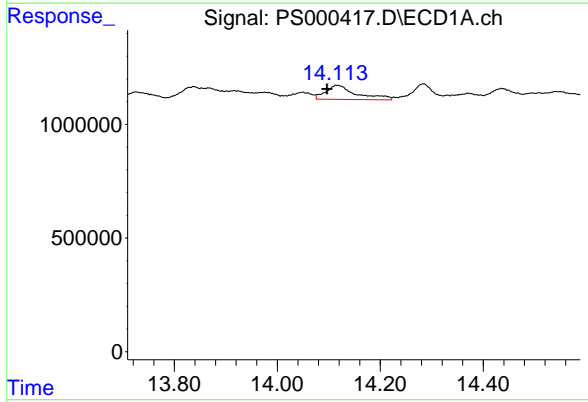


#9 2,4-D
 R.T.: 13.727 min
 Delta R.T.: 0.028 min
 Response: 723141
 Conc: 1.51 ng/ml

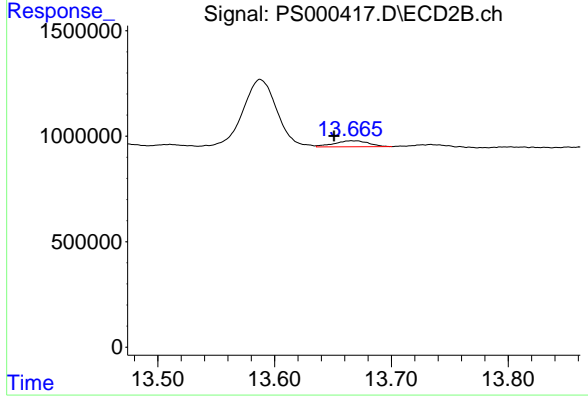
Instrument :
 ECD_S
 ClientSampleId :



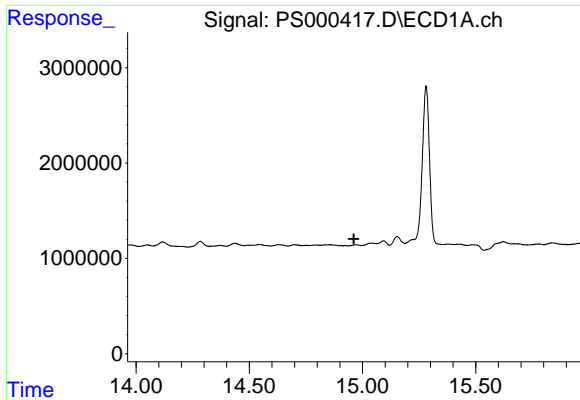
#9 2,4-D
 R.T.: 13.077 min
 Delta R.T.: -0.011 min
 Response: 1262474
 Conc: 2.97 ng/ml



#10 Pentachlorophenol
 R.T.: 14.117 min
 Delta R.T.: 0.020 min
 Response: 2569618
 Conc: 0.49 ng/ml

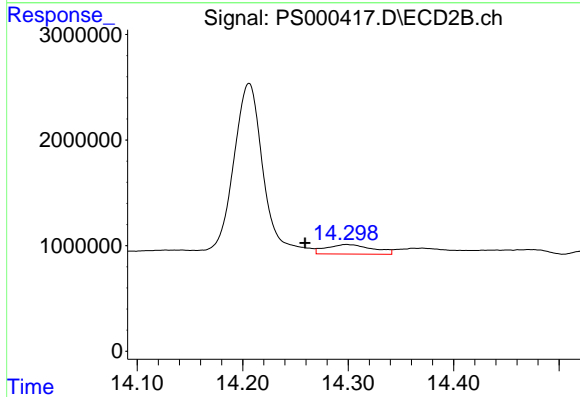


#10 Pentachlorophenol
 R.T.: 13.667 min
 Delta R.T.: 0.016 min
 Response: 583656
 Conc: 0.12 ng/ml

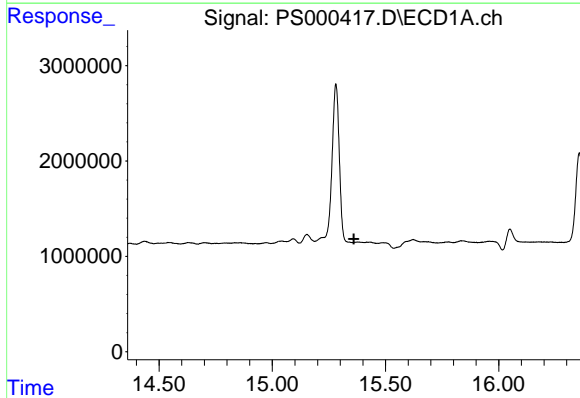


#11 2,4,5-TP (SILVEX)
 R.T.: 0.000 min
 Exp R.T. : 14.962 min
 Response: 0
 Conc: N.D.

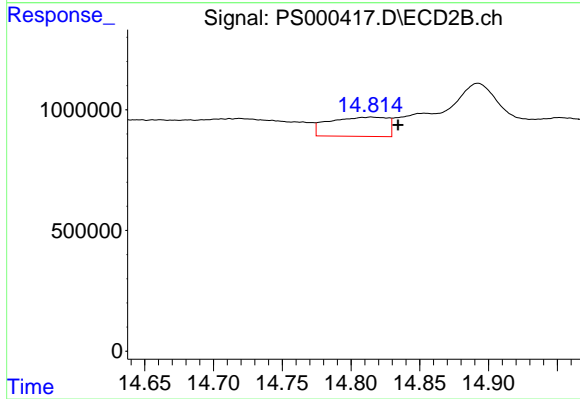
Instrument :
 ECD_S
 ClientSampled :



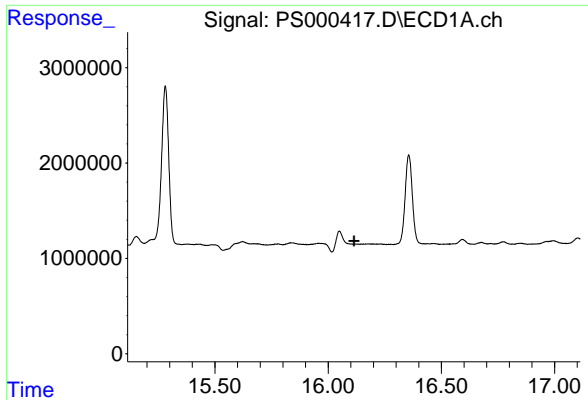
#11 2,4,5-TP (SILVEX)
 R.T.: 14.299 min
 Delta R.T.: 0.040 min
 Response: 2760683
 Conc: 1.42 ng/ml



#12 2,4,5-T
 R.T.: 0.000 min
 Exp R.T. : 15.360 min
 Response: 0
 Conc: N.D.



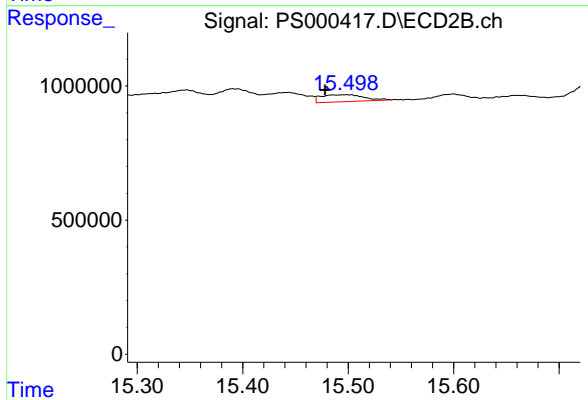
#12 2,4,5-T
 R.T.: 14.814 min
 Delta R.T.: -0.020 min
 Response: 2352103
 Conc: 1.39 ng/ml



#13 2,4-DB

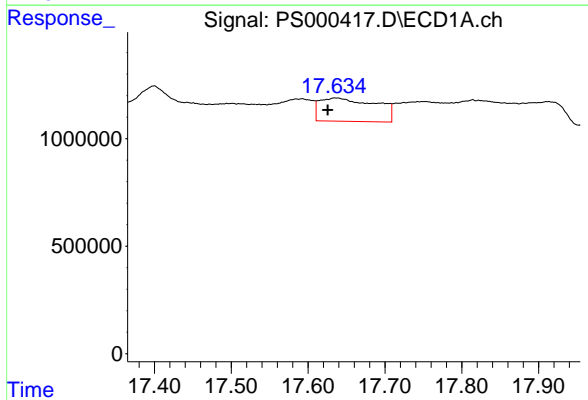
R.T.: 0.000 min
 Exp R.T.: 16.114 min
 Response: 0
 Conc: N.D.

Instrument :
 ECD_S
 ClientSampleId :



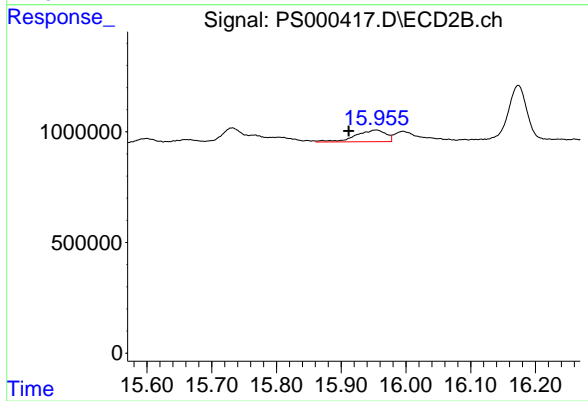
#13 2,4-DB

R.T.: 15.499 min
 Delta R.T.: 0.021 min
 Response: 733491
 Conc: 2.96 ng/ml



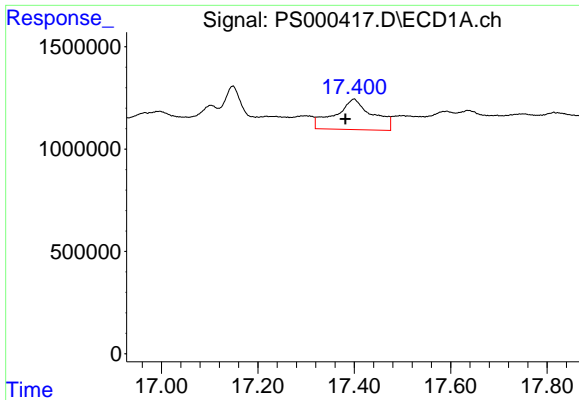
#14 DINOSEB

R.T.: 17.637 min
 Delta R.T.: 0.011 min
 Response: 5500428
 Conc: 3.69 ng/ml



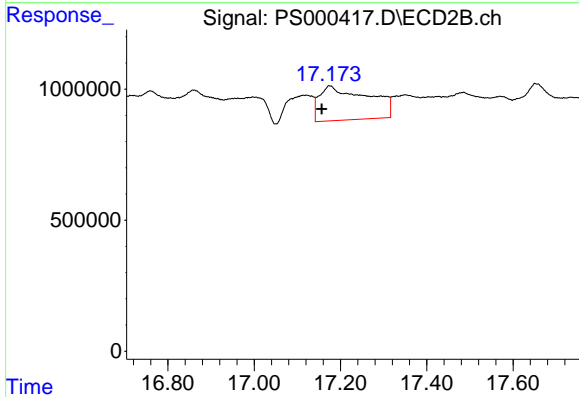
#14 DINOSEB

R.T.: 15.954 min
 Delta R.T.: 0.042 min
 Response: 1705786
 Conc: 1.31 ng/ml

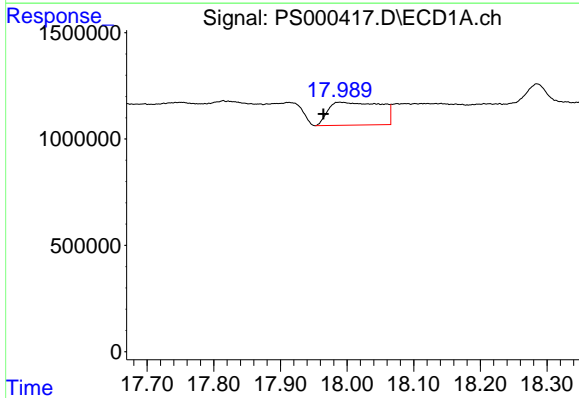


#15 Picloram
 R.T.: 17.399 min
 Delta R.T.: 0.017 min
 Response: 8034549
 Conc: 2.75 ng/ml

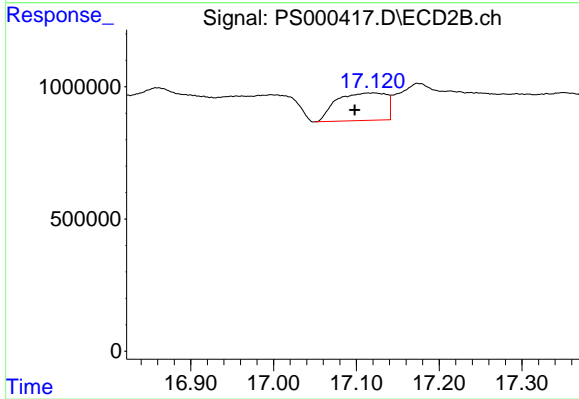
Instrument :
 ECD_S
 ClientSampled :



#15 Picloram
 R.T.: 17.175 min
 Delta R.T.: 0.019 min
 Response: 10251950
 Conc: 4.11 ng/ml



#16 DCPA
 R.T.: 17.992 min
 Delta R.T.: 0.027 min
 Response: 5919492
 Conc: 2.31 ng/ml



#16 DCPA
 R.T.: 17.120 min
 Delta R.T.: 0.022 min
 Response: 4346227
 Conc: 1.88 ng/ml