

Data Path : Z:\pestpcbsrv\HPCHEM1\ECD\_S\Data\PS061719\  
 Data File : PS005035.D  
 Signal(s) : Signal #1: ECD1A.ch Signal #2: ECD2B.ch  
 Acq On : 17 Jun 2019 08:55  
 Operator : SM\AJ  
 Sample : HSTDCCC750  
 Misc :  
 ALS Vial : 3 Sample Multiplier: 1

Instrument :  
 ECD\_S  
 ClientSampleId :  
 HSTDCCC750

Integration File signal 1: autoint1.e  
 Integration File signal 2: autoint2.e  
 Quant Time: Jun 17 11:35:02 2019  
 Quant Method : Z:\pestpcbsrv\HPCHEM1\ECD\_S\Method\PS061219.M  
 Quant Title : 8080.M  
 QLast Update : Fri Jun 14 09:57:49 2019  
 Response via : Initial Calibration  
 Integrator: ChemStation

Volume Inj. : 2 µl  
 Signal #1 Phase : Rtx-CLPesticides Signal #2 Phase: Rtx-CLPesticides2  
 Signal #1 Info : 30M x 0.32mm x0.5 Signal #2 Info : 30M x 0.32mm x 0.25µm

Compound	RT#1	RT#2	Resp#1	Resp#2	ng/ml	ng/ml
-----						
System Monitoring Compounds						
4) S 2,4-DCAA	5.592	5.306	993.3E6	726.1E6	753.789	727.845
Target Compounds						
1) T Dalapon	2.120	1.817	1145.1E6	904.5E6	657.355	692.812
2) T 3,5-DICHL...	4.941	4.599	1283.5E6	861.2E6	680.973	672.909
3) T 4-Nitroph...	5.440	4.981	381.6E6	319.3E6	837.755	704.101
5) T DICAMBA	5.752	5.439	3895.9E6	2625.3E6	688.354	683.578
6) T MCPP	5.911	5.529	310.6E6	198.9E6	69.636	68.836
7) T MCPA	6.048	5.714	435.5E6	283.3E6	69.485	67.204
8) T DICHLORPROP	6.391	5.995	972.1E6	663.4E6	694.830	683.056
9) T 2,4-D	6.607	6.267	985.7E6	750.3E6	730.486	701.144
10) T Pentachlo...	6.878	6.644	13131.5E6	8740.8E6	682.601	678.426
11) T 2,4,5-TP ...	7.415	7.007	5499.7E6	3700.0E6	699.956	691.233
12) T 2,4,5-T	7.689	7.368	5549.8E6	3379.3E6	694.554	716.471
13) T 2,4-DB	8.221	7.857	698.2E6	461.5E6	760.633	727.173
14) T DINOSEB	9.322	8.172	4385.9E6	2672.8E6	668.848	688.069
15) T Picloram	9.150	9.114	7082.4E6	4650.3E6	713.365	681.737
16) T DCPA	9.593	9.073	6708.0E6	4628.9E6	690.872	701.942
-----						

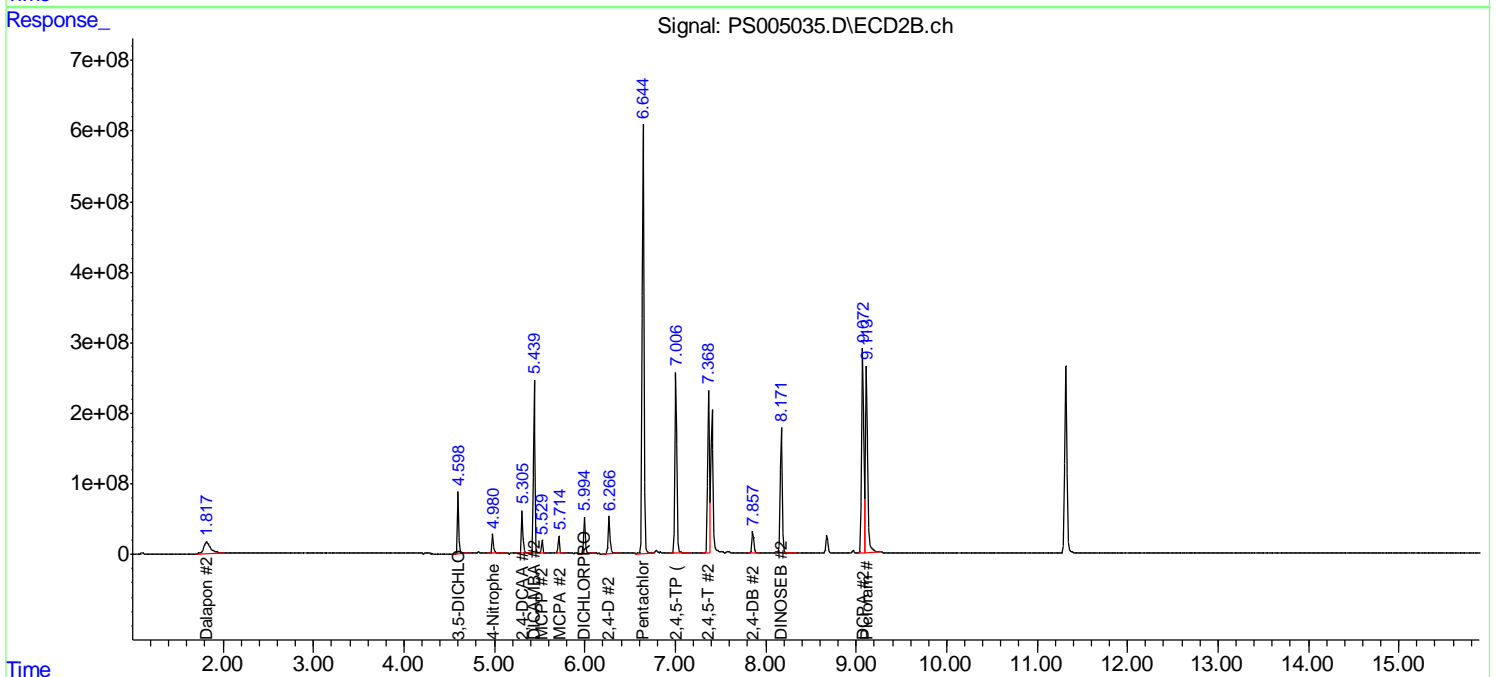
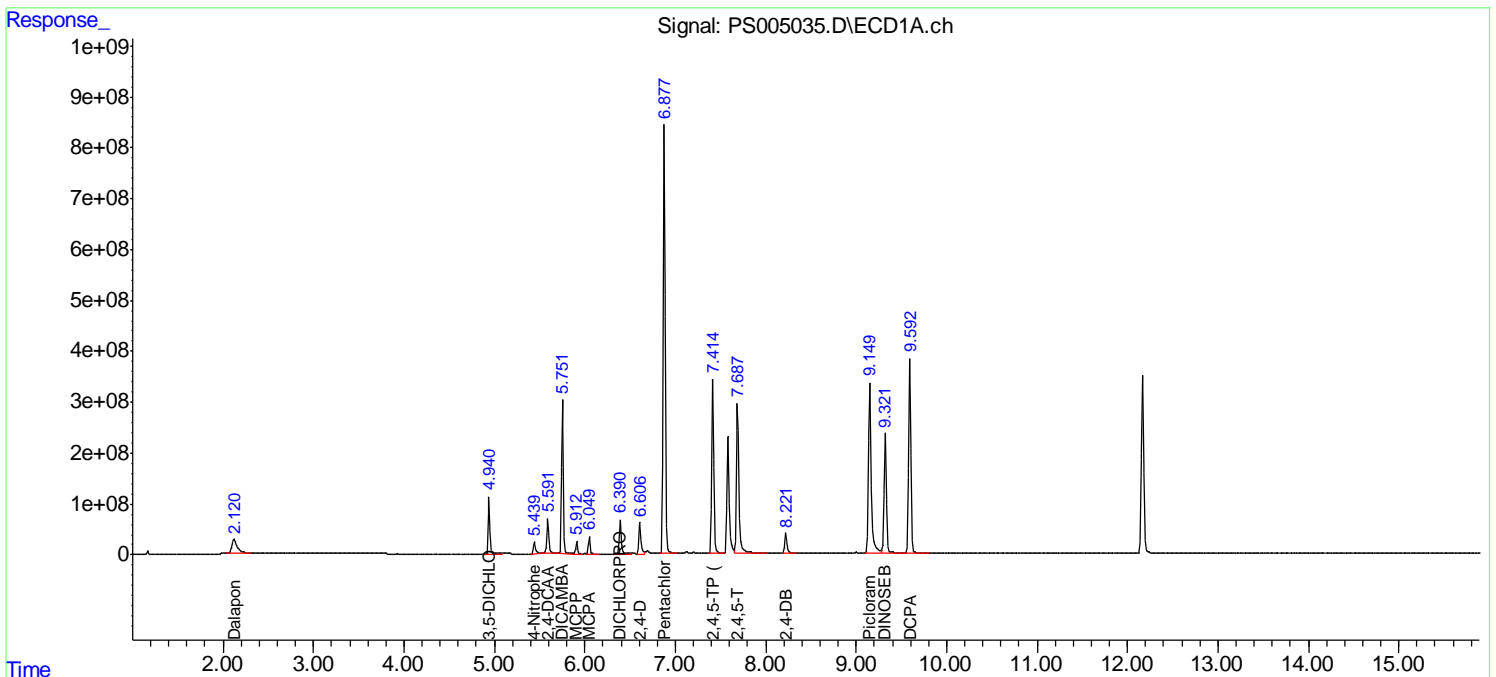
(f)=RT Delta > 1/2 Window (#)=Amounts differ by > 25% (m)=manual int.

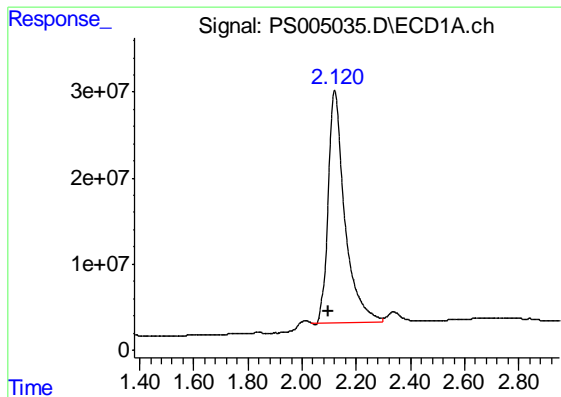
Data Path : Z:\pestpcbsrv\HPCHEM1\ECD\_S\Data\PS061719\  
 Data File : PS005035.D  
 Signal(s) : Signal #1: ECD1A.ch Signal #2: ECD2B.ch  
 Acq On : 17 Jun 2019 08:55  
 Operator : SM\AJ  
 Sample : HSTDCCC750  
 Misc :  
 ALS Vial : 3 Sample Multiplier: 1

Instrument :  
 ECD\_S  
 ClientSampled :  
 HSTDCCC750

Integration File signal 1: autoint1.e  
 Integration File signal 2: autoint2.e  
 Quant Time: Jun 17 11:35:02 2019  
 Quant Method : Z:\pestpcbsrv\HPCHEM1\ECD\_S\Method\PS061219.M  
 Quant Title : 8080.M  
 QLast Update : Fri Jun 14 09:57:49 2019  
 Response via : Initial Calibration  
 Integrator: ChemStation

Volume Inj. : 2 µl  
 Signal #1 Phase : Rtx-CLPesticides Signal #2 Phase: Rtx-CLPesticides2  
 Signal #1 Info : 30M x 0.32mm x0.5 Signal #2 Info : 30M x 0.32mm x 0.25µm

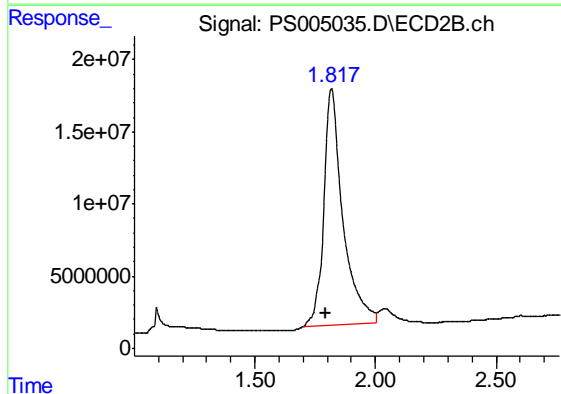




#1 Dalapon

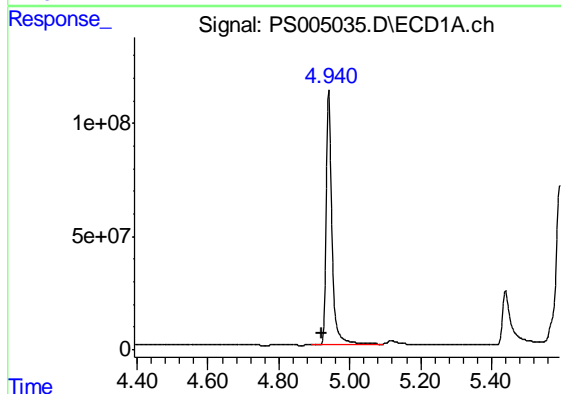
R.T.: 2.120 min  
 Delta R.T.: 0.023 min  
 Response: 1145054455  
 Conc: 657.36 ng/ml

Instrument :  
 ECD\_S  
 ClientSampleId :  
 HSTDCCC750



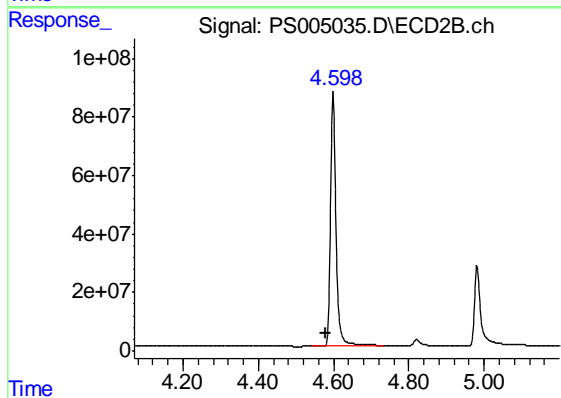
#1 Dalapon

R.T.: 1.817 min  
 Delta R.T.: 0.023 min  
 Response: 904511626  
 Conc: 692.81 ng/ml



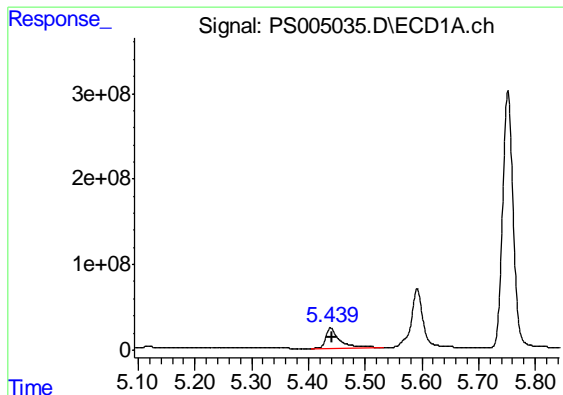
#2 3,5-DICHLOROBENZOIC ACID

R.T.: 4.941 min  
 Delta R.T.: 0.019 min  
 Response: 1283525308  
 Conc: 680.97 ng/ml



#2 3,5-DICHLOROBENZOIC ACID

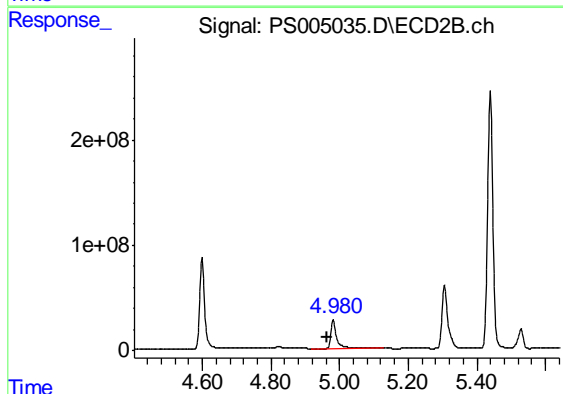
R.T.: 4.599 min  
 Delta R.T.: 0.021 min  
 Response: 861182170  
 Conc: 672.91 ng/ml



#3 4-Nitrophenol

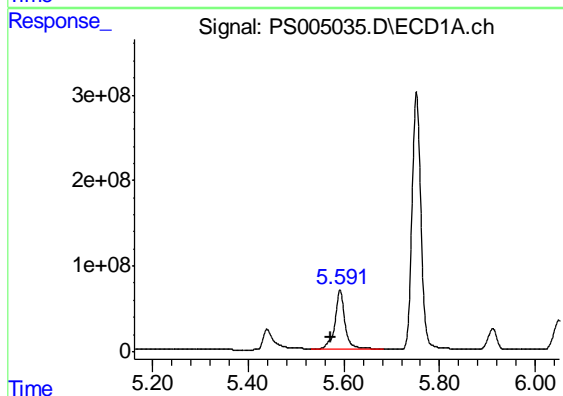
R.T.: 5.440 min  
Delta R.T.: -0.002 min  
Response: 381579006  
Conc: 837.75 ng/ml

Instrument :  
ECD\_S  
ClientSampleId :  
HSTDCCC750



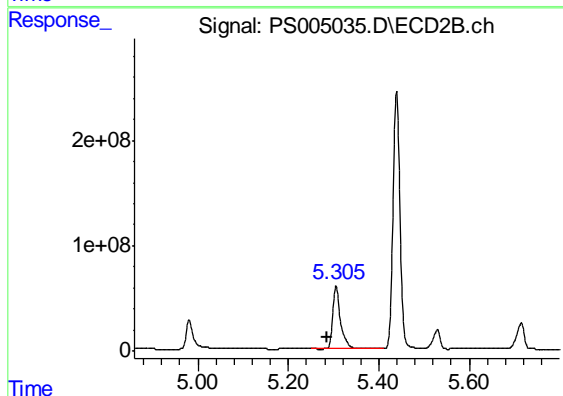
#3 4-Nitrophenol

R.T.: 4.981 min  
Delta R.T.: 0.016 min  
Response: 319285009  
Conc: 704.10 ng/ml



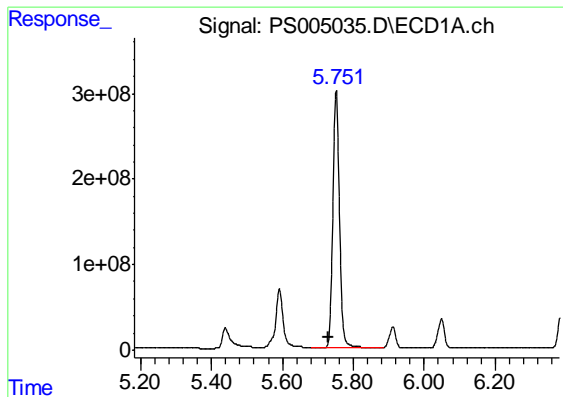
#4 2,4-DCAA

R.T.: 5.592 min  
Delta R.T.: 0.018 min  
Response: 993339106  
Conc: 753.79 ng/ml



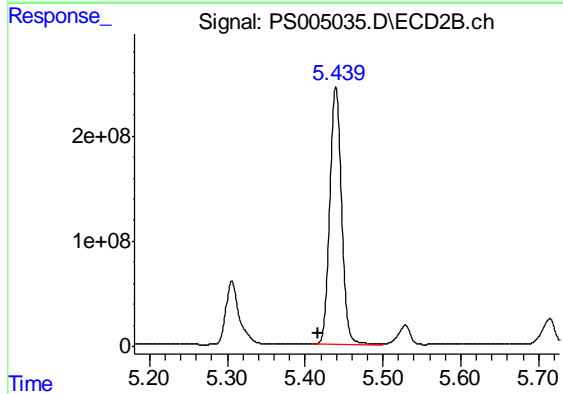
#4 2,4-DCAA

R.T.: 5.306 min  
Delta R.T.: 0.021 min  
Response: 726051519  
Conc: 727.85 ng/ml

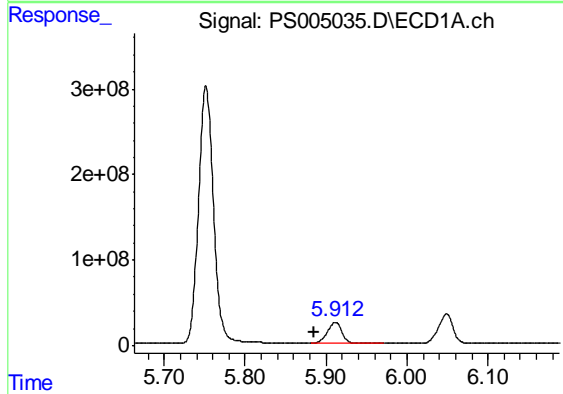


#5 DICAMBA  
 R.T.: 5.752 min  
 Delta R.T.: 0.021 min  
 Response: 3895904786  
 Conc: 688.35 ng/ml

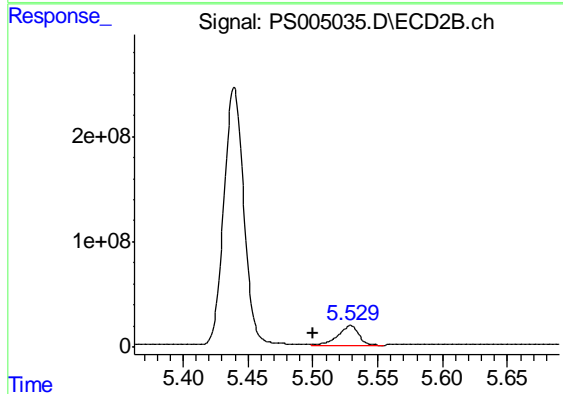
Instrument :  
 ECD\_S  
 ClientSampleId :  
 HSTDCCC750



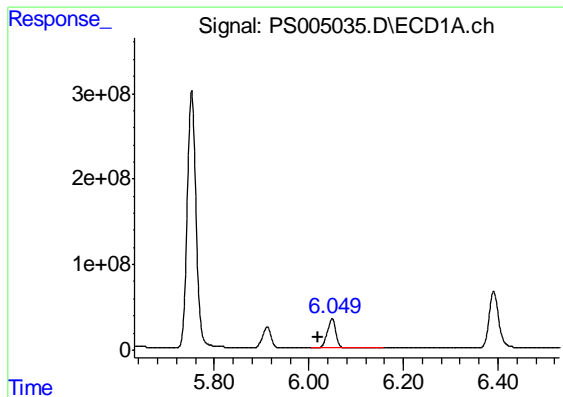
#5 DICAMBA  
 R.T.: 5.439 min  
 Delta R.T.: 0.023 min  
 Response: 2625280071  
 Conc: 683.58 ng/ml



#6 MCPP  
 R.T.: 5.911 min  
 Delta R.T.: 0.026 min  
 Response: 310608695  
 Conc: 69.64 ug/ml

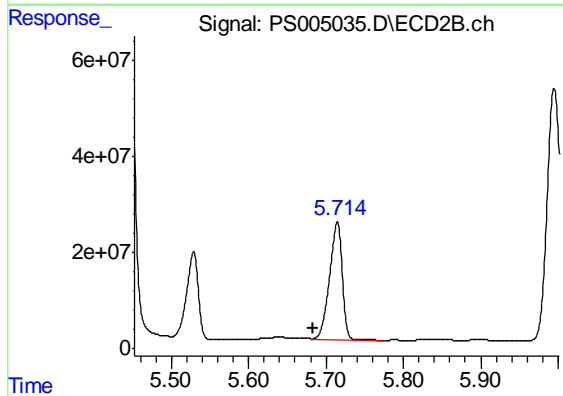


#6 MCPP  
 R.T.: 5.529 min  
 Delta R.T.: 0.029 min  
 Response: 198900018  
 Conc: 68.84 ug/ml

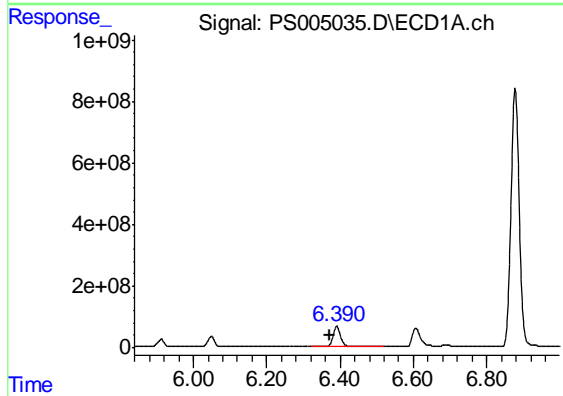


#7 MCPA  
 R.T.: 6.048 min  
 Delta R.T.: 0.028 min  
 Response: 435457020  
 Conc: 69.48 ug/ml

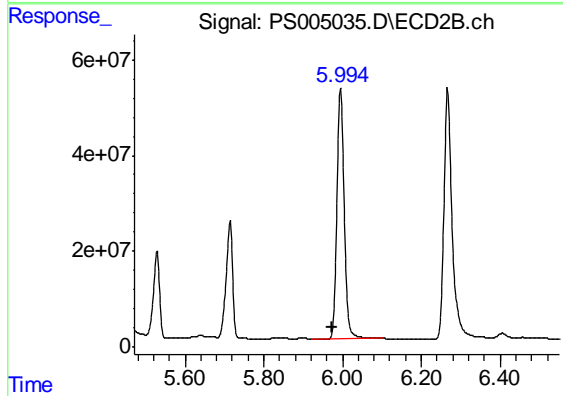
Instrument :  
 ECD\_S  
 ClientSampleId :  
 HSTDCCC750



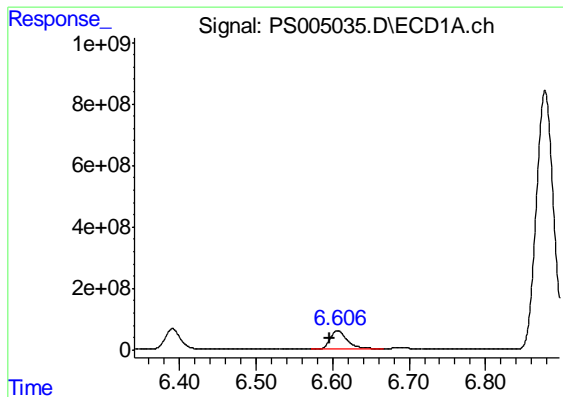
#7 MCPA  
 R.T.: 5.714 min  
 Delta R.T.: 0.031 min  
 Response: 283294149  
 Conc: 67.20 ug/ml



#8 DICHLORPROP  
 R.T.: 6.391 min  
 Delta R.T.: 0.019 min  
 Response: 972082793  
 Conc: 694.83 ng/ml



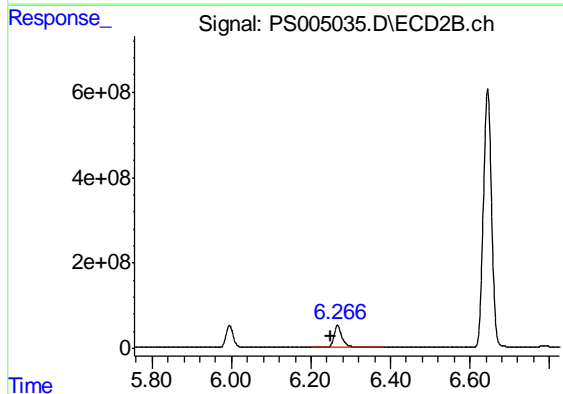
#8 DICHLORPROP  
 R.T.: 5.995 min  
 Delta R.T.: 0.021 min  
 Response: 663394043  
 Conc: 683.06 ng/ml



#9 2,4-D

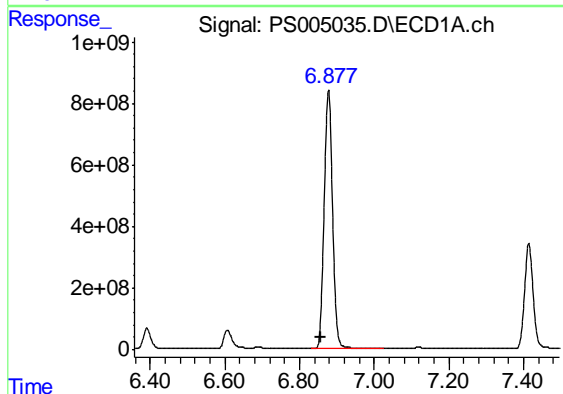
R.T.: 6.607 min  
Delta R.T.: 0.011 min  
Response: 985677857  
Conc: 730.49 ng/ml

Instrument :  
ECD\_S  
ClientSampleId :  
HSTDCCC750



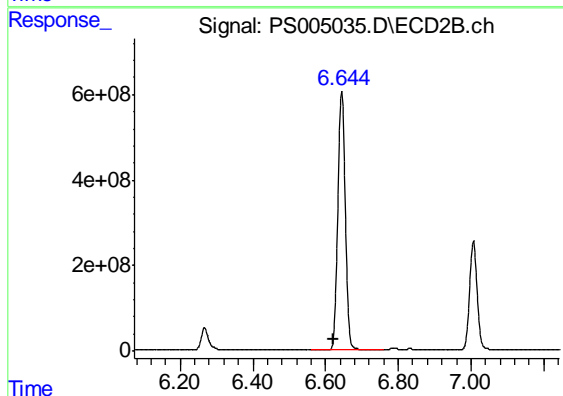
#9 2,4-D

R.T.: 6.267 min  
Delta R.T.: 0.017 min  
Response: 750341370  
Conc: 701.14 ng/ml



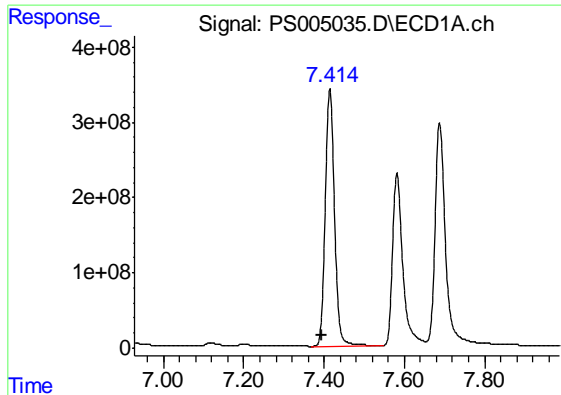
#10 Pentachlorophenol

R.T.: 6.878 min  
Delta R.T.: 0.022 min  
Response: 13131538664  
Conc: 682.60 ng/ml



#10 Pentachlorophenol

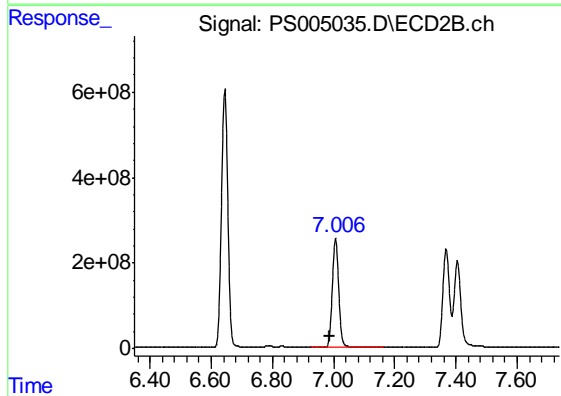
R.T.: 6.644 min  
Delta R.T.: 0.023 min  
Response: 8740844724  
Conc: 678.43 ng/ml



#11 2,4,5-TP (SILVEX)

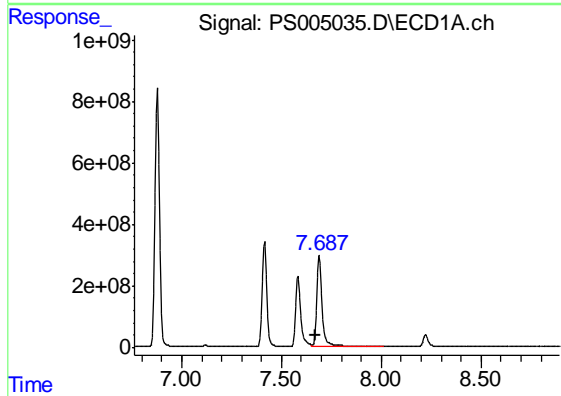
R.T.: 7.415 min  
 Delta R.T.: 0.020 min  
 Response: 5499657396  
 Conc: 699.96 ng/ml

Instrument :  
 ECD\_S  
 ClientSampleId :  
 HSTDCCC750



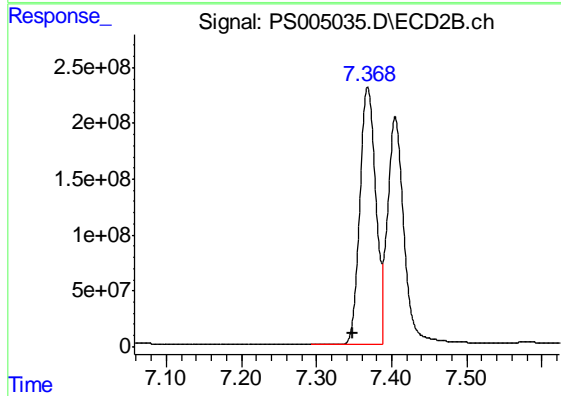
#11 2,4,5-TP (SILVEX)

R.T.: 7.007 min  
 Delta R.T.: 0.022 min  
 Response: 3699959627  
 Conc: 691.23 ng/ml



#12 2,4,5-T

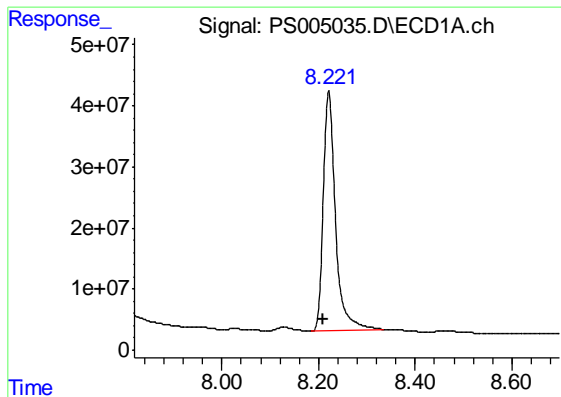
R.T.: 7.689 min  
 Delta R.T.: 0.015 min  
 Response: 5549785613  
 Conc: 694.55 ng/ml



#12 2,4,5-T

R.T.: 7.368 min  
 Delta R.T.: 0.020 min  
 Response: 3379323241  
 Conc: 716.47 ng/ml

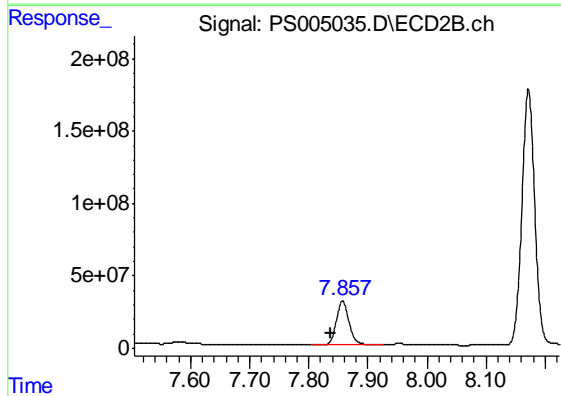




#13 2,4-DB

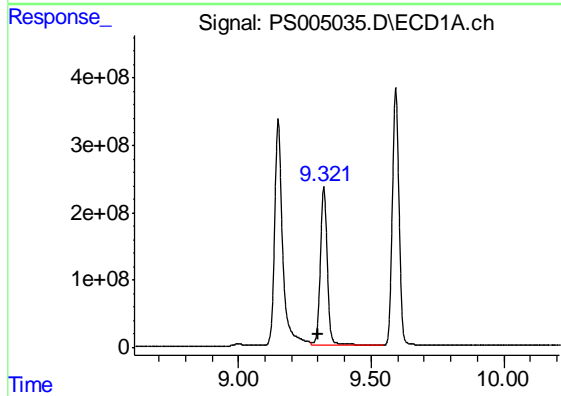
R.T.: 8.221 min  
Delta R.T.: 0.013 min  
Response: 698249729  
Conc: 760.63 ng/ml

Instrument :  
ECD\_S  
ClientSampleId :  
HSTDCCC750



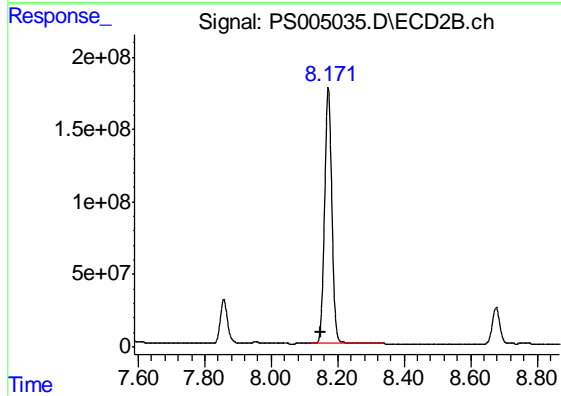
#13 2,4-DB

R.T.: 7.857 min  
Delta R.T.: 0.019 min  
Response: 461494132  
Conc: 727.17 ng/ml



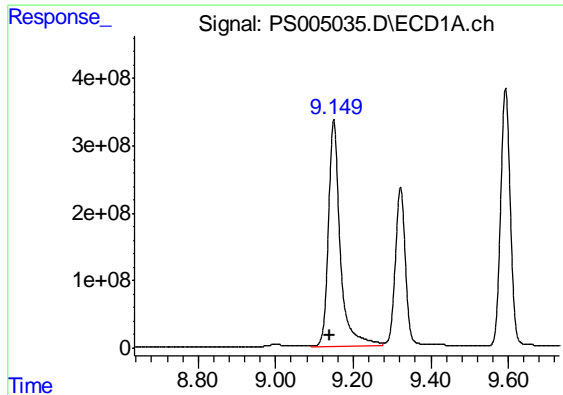
#14 DINOSEB

R.T.: 9.322 min  
Delta R.T.: 0.022 min  
Response: 4385850561  
Conc: 668.85 ng/ml



#14 DINOSEB

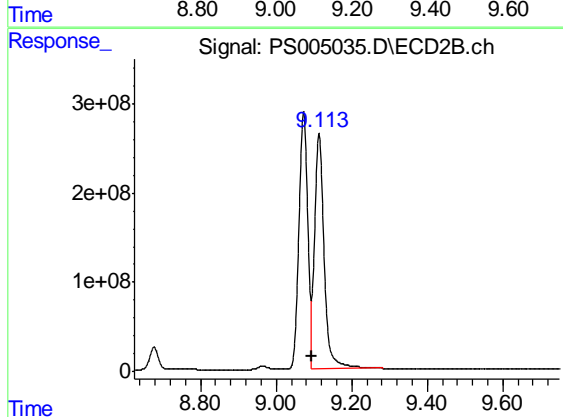
R.T.: 8.172 min  
Delta R.T.: 0.022 min  
Response: 2672847253  
Conc: 688.07 ng/ml



#15 Picloram

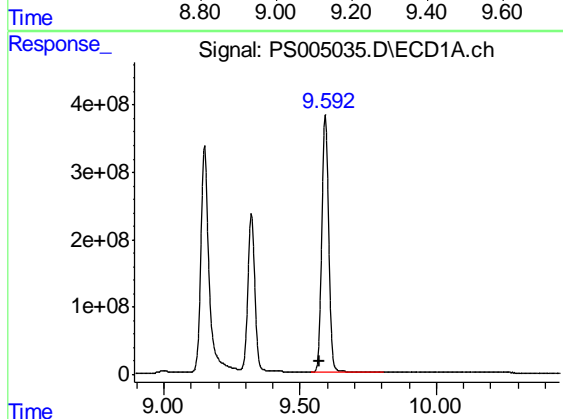
R.T.: 9.150 min  
 Delta R.T.: 0.010 min  
 Response: 7082367795  
 Conc: 713.36 ng/ml

Instrument :  
 ECD\_S  
 ClientSampleId :  
 HSTDCCC750



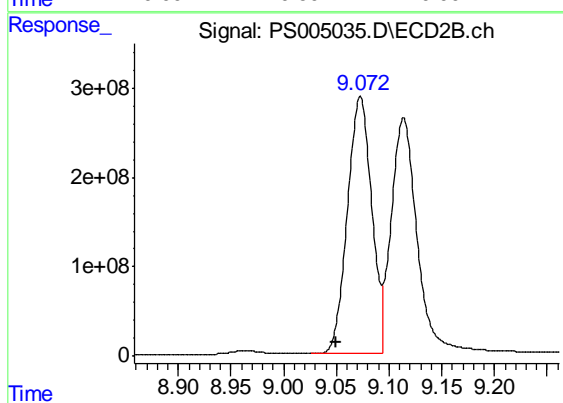
#15 Picloram

R.T.: 9.114 min  
 Delta R.T.: 0.018 min  
 Response: 4650252890  
 Conc: 681.74 ng/ml



#16 DCPA

R.T.: 9.593 min  
 Delta R.T.: 0.022 min  
 Response: 6708015969  
 Conc: 690.87 ng/ml



#16 DCPA

R.T.: 9.073 min  
 Delta R.T.: 0.023 min  
 Response: 4628926258  
 Conc: 701.94 ng/ml