

Data Path : Z:\pestpcbsrv\HPCHEM1\ECD\_S\Data\PS061719\  
 Data File : PS005066.D  
 Signal(s) : Signal #1: ECD1A.ch Signal #2: ECD2B.ch  
 Acq On : 17 Jun 2019 20:28  
 Operator : SM\AJ  
 Sample : K3382-07  
 Misc :  
 ALS Vial : 28 Sample Multiplier: 1

Instrument :  
 ECD\_S  
 ClientSampleId :

Integration File signal 1: autoint1.e  
 Integration File signal 2: autoint2.e  
 Quant Time: Jun 18 01:06:26 2019  
 Quant Method : Z:\pestpcbsrv\HPCHEM1\ECD\_S\Method\PS061219.M  
 Quant Title : 8080.M  
 QLast Update : Fri Jun 14 09:57:49 2019  
 Response via : Initial Calibration  
 Integrator: ChemStation

Volume Inj. : 2 µl  
 Signal #1 Phase : Rtx-CLPesticides Signal #2 Phase: Rtx-CLPesticides2  
 Signal #1 Info : 30M x 0.32mm x0.5 Signal #2 Info : 30M x 0.32mm x 0.25µm

Compound	RT#1	RT#2	Resp#1	Resp#2	ng/ml	ng/ml
-----						
System Monitoring Compounds						
4) S 2,4-DCAA	5.574	5.287	380.6E6	244.9E6	288.833	245.555
Target Compounds						
2) T 3,5-DICHL...	4.902	4.606	8307884	245.7E6	4.408	192.017 #
3) T 4-Nitroph...	5.498	0.000	10374690	0	22.778	N.D. #
5) T DICAMBA	5.747	5.403	21407672	55682710	3.782	14.499 #
7) T MCPA	6.067	5.679	15622921	11852115	2.493	2.812
8) T DICHLORPROP	0.000	5.978	0	23929903	N.D.	24.639
9) T 2,4-D	6.657	0.000	38808583	0	28.761	N.D. #
10) T Pentachlo...	6.860	6.626	29167934	16259689	1.516	1.262
11) T 2,4,5-TP ...	7.462	6.941	33487857	27477214	4.262	5.133
12) T 2,4,5-T	7.644	0.000	21540941	0	2.696	N.D. #
13) T 2,4-DB	8.226	0.000	91374261	0	99.538	N.D. #
15) T Picloram	0.000	9.108	0	30379495	N.D.	4.454
16) T DCPA	0.000	9.108	0	30379495	N.D.	4.607
-----						

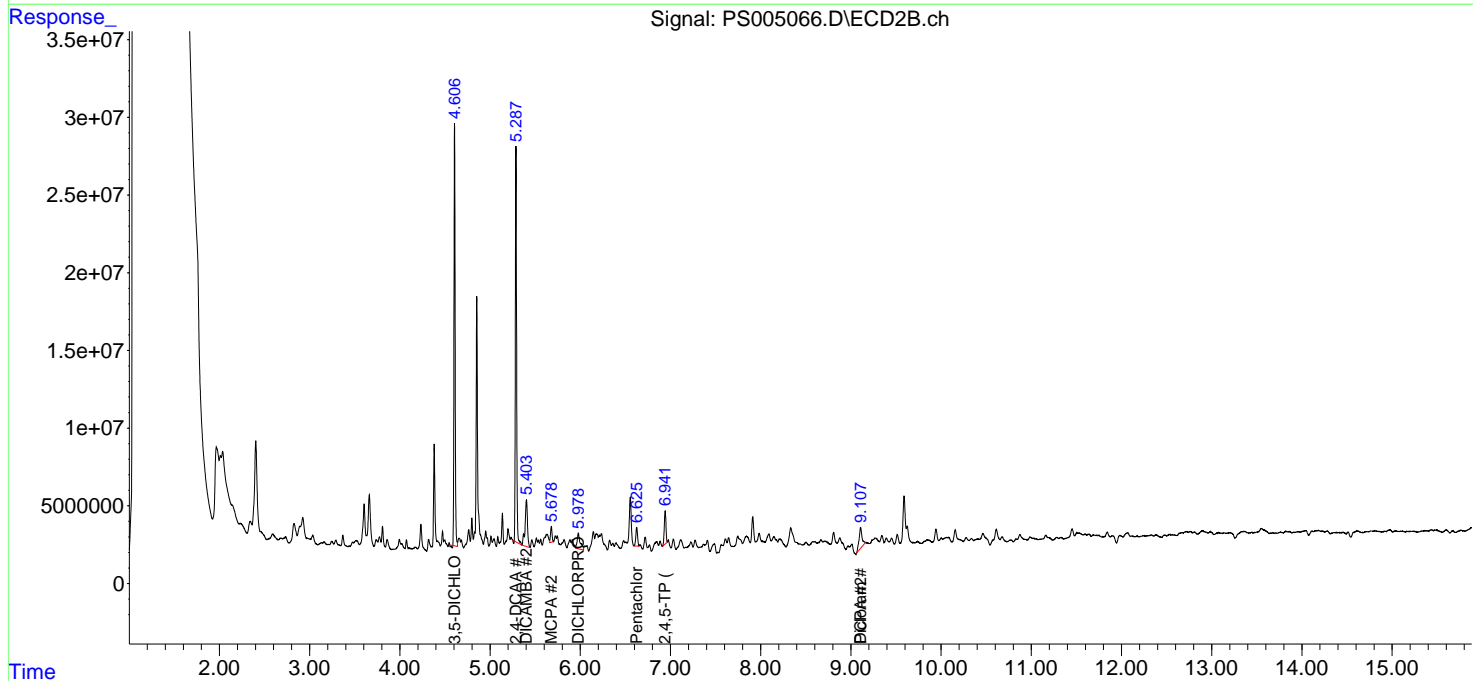
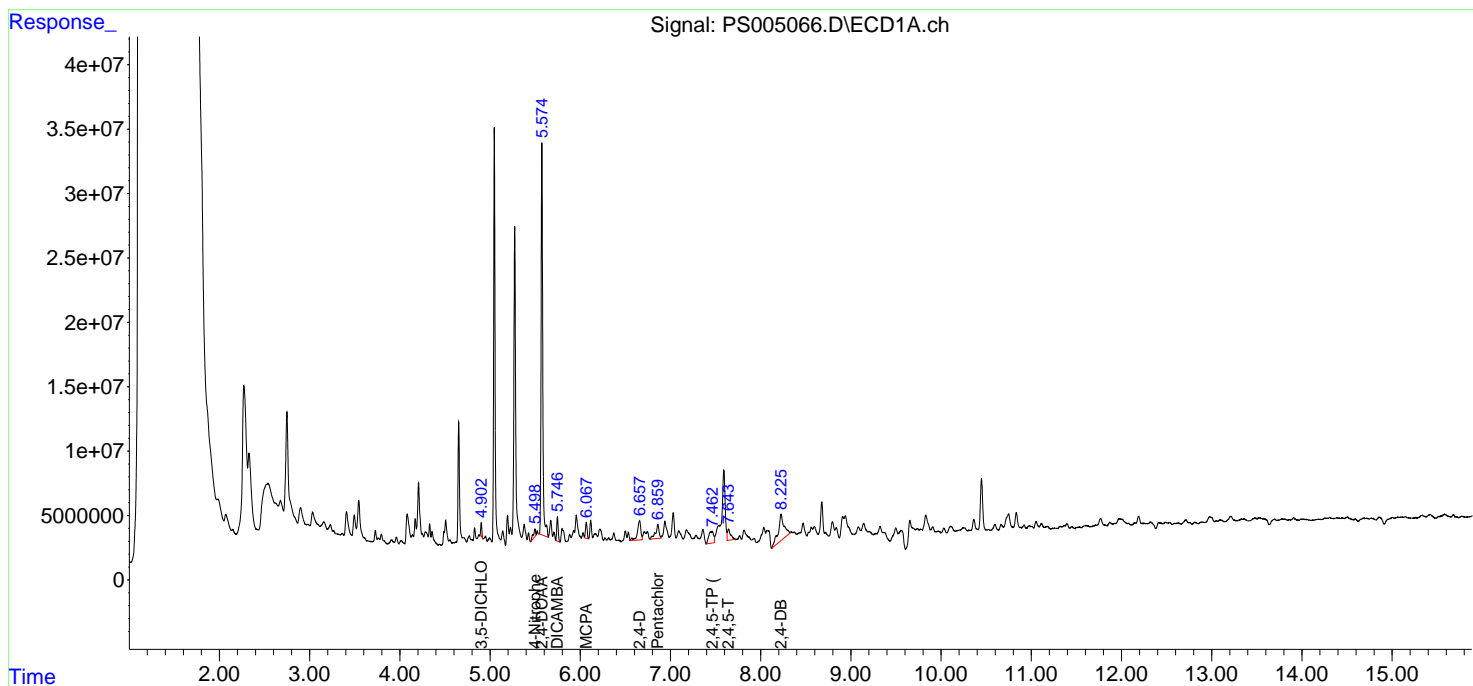
(f)=RT Delta > 1/2 Window (#)=Amounts differ by > 25% (m)=manual int.

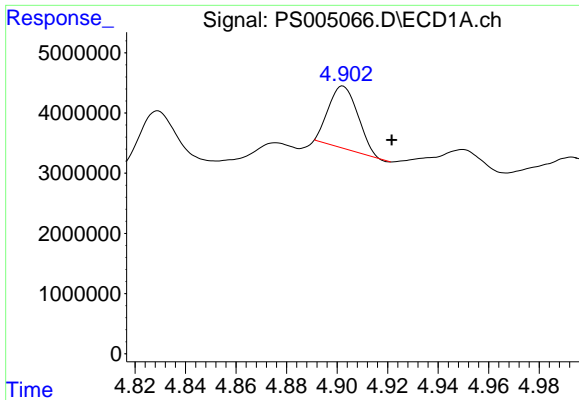
Data Path : Z:\pestpcbsrv\HPCHEM1\ECD\_S\Data\PS061719\  
 Data File : PS005066.D  
 Signal(s) : Signal #1: ECD1A.ch Signal #2: ECD2B.ch  
 Acq On : 17 Jun 2019 20:28  
 Operator : SM\AJ  
 Sample : K3382-07  
 Misc :  
 ALS Vial : 28 Sample Multiplier: 1

Instrument :  
 ECD\_S  
 ClientSampled :

Integration File signal 1: autoint1.e  
 Integration File signal 2: autoint2.e  
 Quant Time: Jun 18 01:06:26 2019  
 Quant Method : Z:\pestpcbsrv\HPCHEM1\ECD\_S\Method\PS061219.M  
 Quant Title : 8080.M  
 QLast Update : Fri Jun 14 09:57:49 2019  
 Response via : Initial Calibration  
 Integrator: ChemStation

Volume Inj. : 2 µl  
 Signal #1 Phase : Rtx-CLPesticides Signal #2 Phase: Rtx-CLPesticides2  
 Signal #1 Info : 30M x 0.32mm x0.5 Signal #2 Info : 30M x 0.32mm x 0.25µm

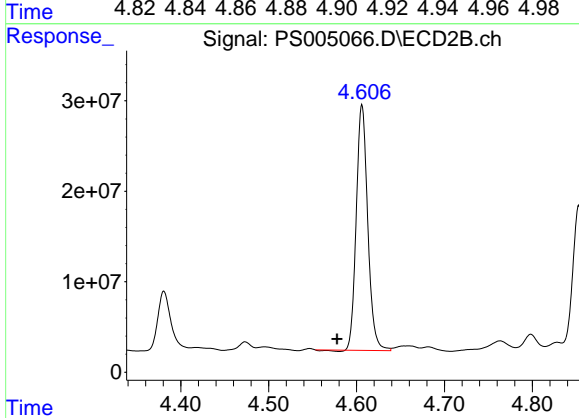




#2 3,5-DICHLOROBenZOIC ACID

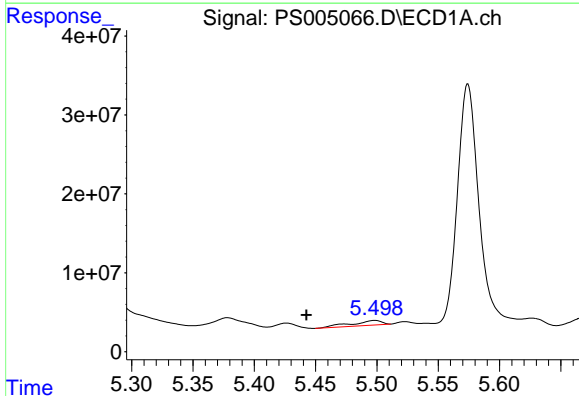
R.T.: 4.902 min  
 Delta R.T.: -0.019 min  
 Response: 8307884  
 Conc: 4.41 ng/ml

Instrument :  
 ECD\_S  
 ClientSampleId :



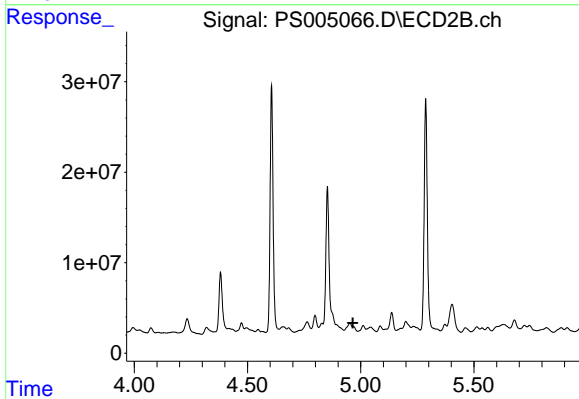
#2 3,5-DICHLOROBenZOIC ACID

R.T.: 4.606 min  
 Delta R.T.: 0.028 min  
 Response: 245741968  
 Conc: 192.02 ng/ml



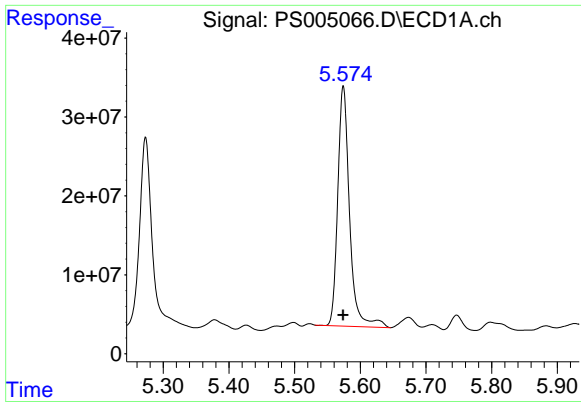
#3 4-Nitrophenol

R.T.: 5.498 min  
 Delta R.T.: 0.055 min  
 Response: 10374690  
 Conc: 22.78 ng/ml



#3 4-Nitrophenol

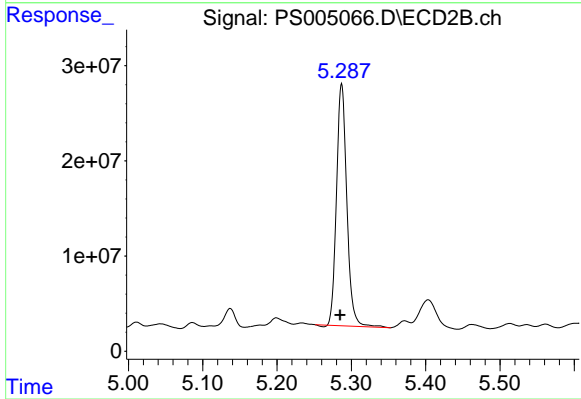
R.T.: 0.000 min  
 Exp R.T. : 4.965 min  
 Response: 0  
 Conc: N.D.



#4 2,4-DCAA

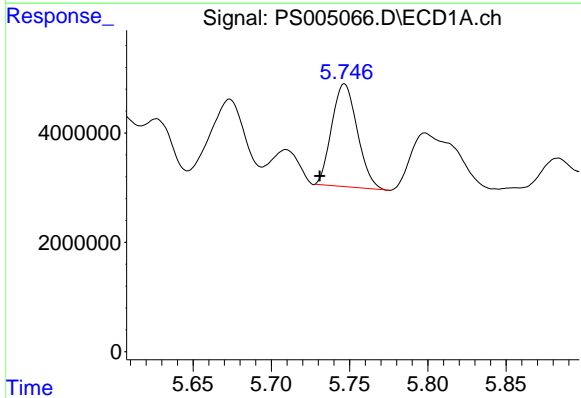
R.T.: 5.574 min  
 Delta R.T.: 0.000 min  
 Response: 380622769  
 Conc: 288.83 ng/ml

Instrument :  
 ECD\_S  
 ClientSampled :



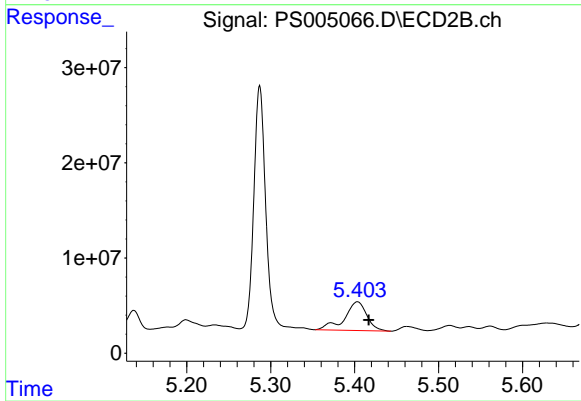
#4 2,4-DCAA

R.T.: 5.287 min  
 Delta R.T.: 0.002 min  
 Response: 244949585  
 Conc: 245.55 ng/ml



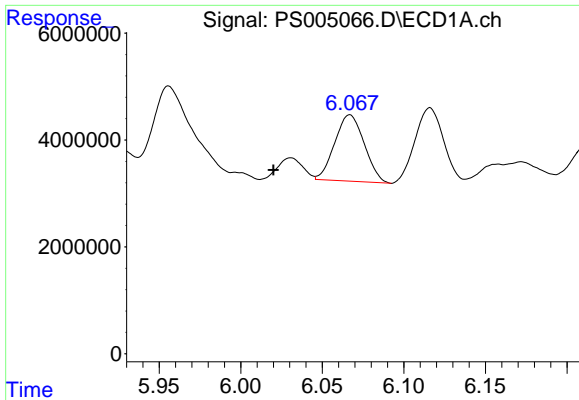
#5 DICAMBA

R.T.: 5.747 min  
 Delta R.T.: 0.016 min  
 Response: 21407672  
 Conc: 3.78 ng/ml



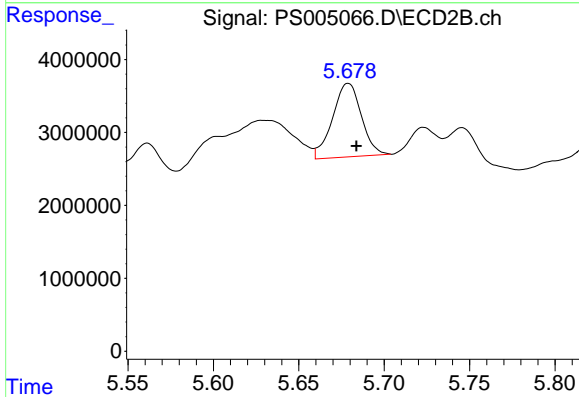
#5 DICAMBA

R.T.: 5.403 min  
 Delta R.T.: -0.013 min  
 Response: 55682710  
 Conc: 14.50 ng/ml

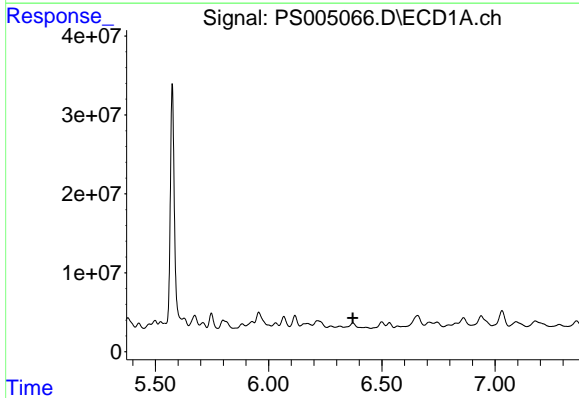


#7 MCPA  
 R.T.: 6.067 min  
 Delta R.T.: 0.047 min  
 Response: 15622921  
 Conc: 2.49 ug/ml

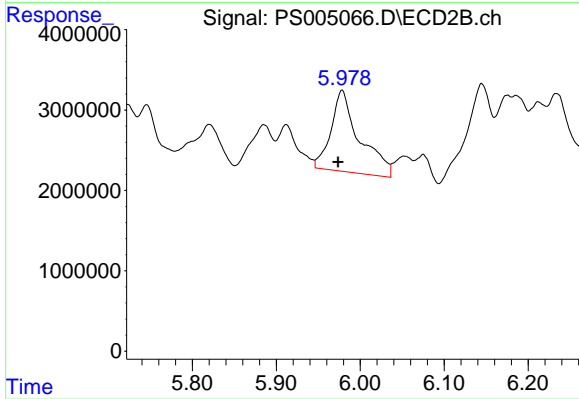
Instrument :  
 ECD\_S  
 ClientSampled :



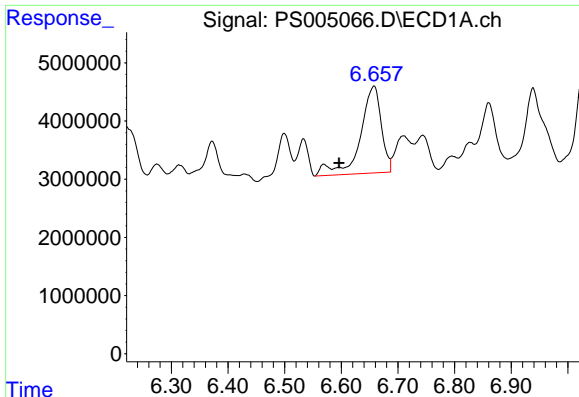
#7 MCPA  
 R.T.: 5.679 min  
 Delta R.T.: -0.005 min  
 Response: 11852115  
 Conc: 2.81 ug/ml



#8 DICHLORPROP  
 R.T.: 0.000 min  
 Exp R.T. : 6.372 min  
 Response: 0  
 Conc: N.D.



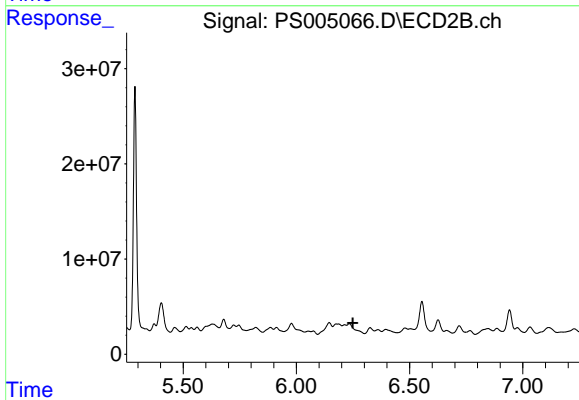
#8 DICHLORPROP  
 R.T.: 5.978 min  
 Delta R.T.: 0.005 min  
 Response: 23929903  
 Conc: 24.64 ng/ml



#9 2,4-D

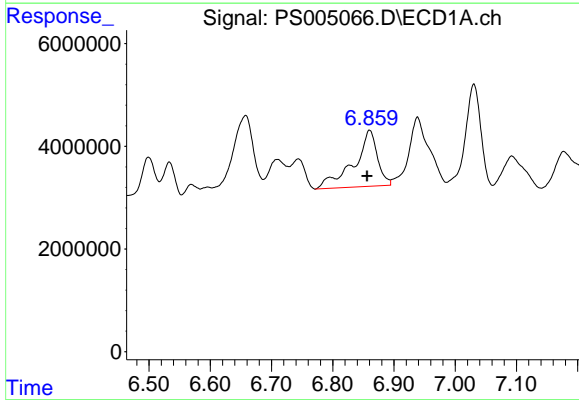
R.T.: 6.657 min  
 Delta R.T.: 0.061 min  
 Response: 38808583  
 Conc: 28.76 ng/ml

Instrument :  
 ECD\_S  
 ClientSampled :



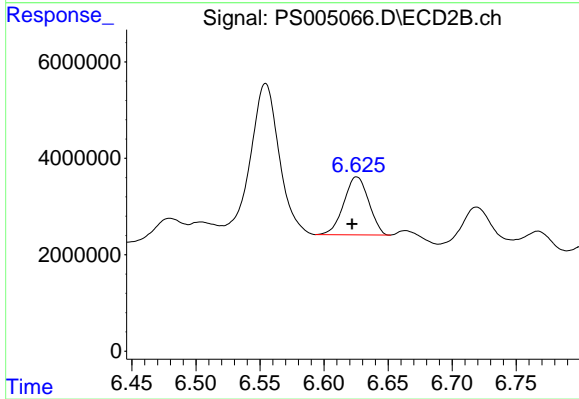
#9 2,4-D

R.T.: 0.000 min  
 Exp R.T. : 6.250 min  
 Response: 0  
 Conc: N.D.



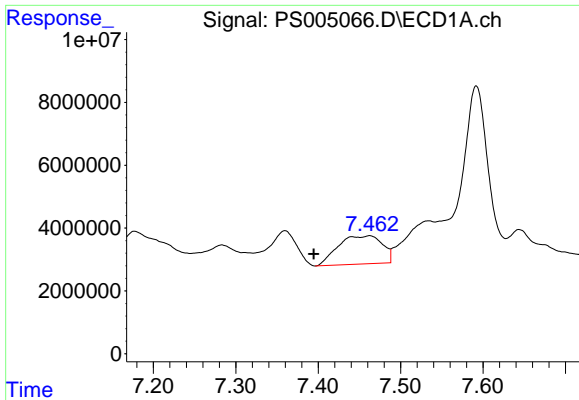
#10 Pentachlorophenol

R.T.: 6.860 min  
 Delta R.T.: 0.004 min  
 Response: 29167934  
 Conc: 1.52 ng/ml



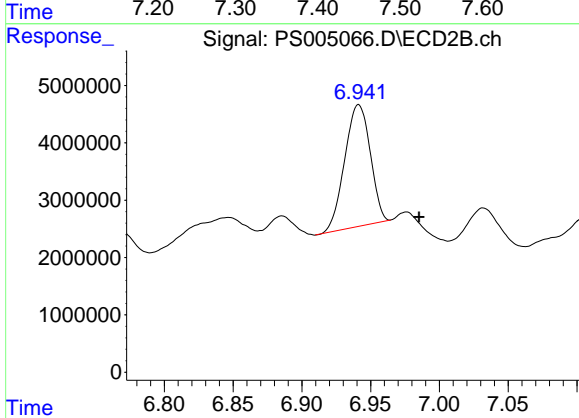
#10 Pentachlorophenol

R.T.: 6.626 min  
 Delta R.T.: 0.004 min  
 Response: 16259689  
 Conc: 1.26 ng/ml

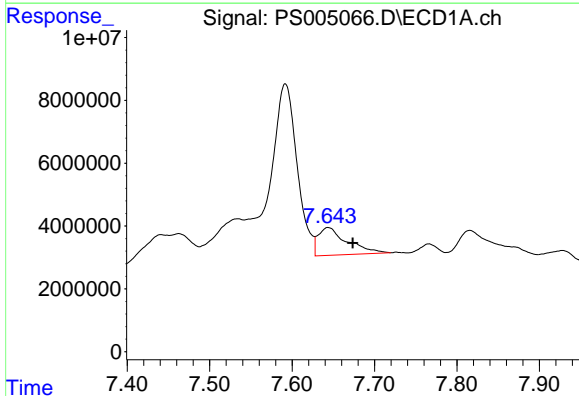


#11 2,4,5-TP (SILVEX)  
 R.T.: 7.462 min  
 Delta R.T.: 0.068 min  
 Response: 33487857  
 Conc: 4.26 ng/ml

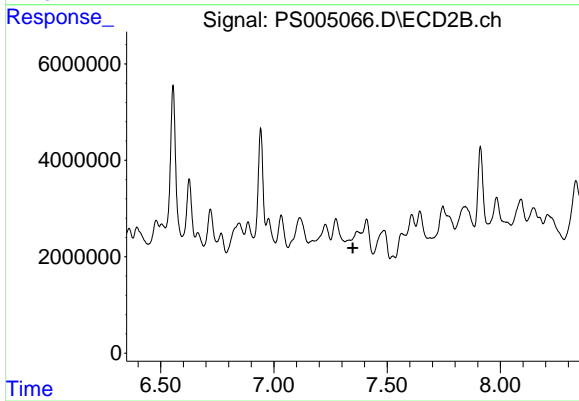
Instrument :  
 ECD\_S  
 ClientSampled :



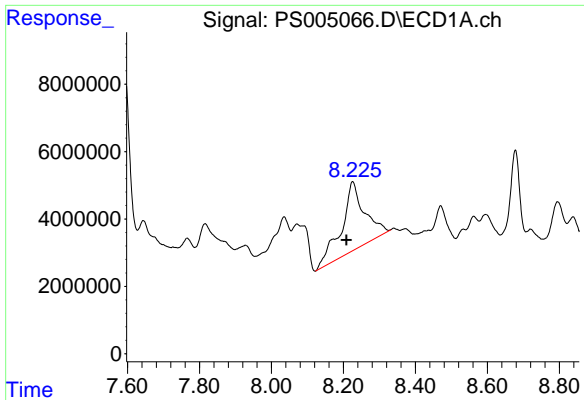
#11 2,4,5-TP (SILVEX)  
 R.T.: 6.941 min  
 Delta R.T.: -0.044 min  
 Response: 27477214  
 Conc: 5.13 ng/ml



#12 2,4,5-T  
 R.T.: 7.644 min  
 Delta R.T.: -0.030 min  
 Response: 21540941  
 Conc: 2.70 ng/ml



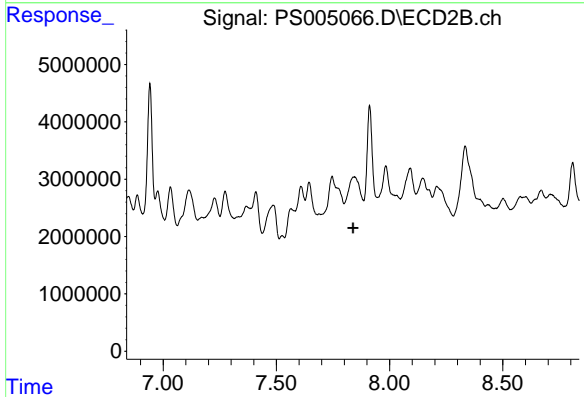
#12 2,4,5-T  
 R.T.: 0.000 min  
 Exp R.T.: 7.349 min  
 Response: 0  
 Conc: N.D.



#13 2,4-DB

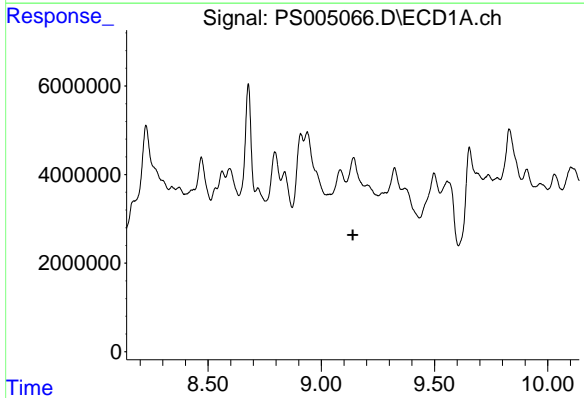
R.T.: 8.226 min  
 Delta R.T.: 0.017 min  
 Response: 91374261  
 Conc: 99.54 ng/ml

Instrument :  
 ECD\_S  
 ClientSampleId :



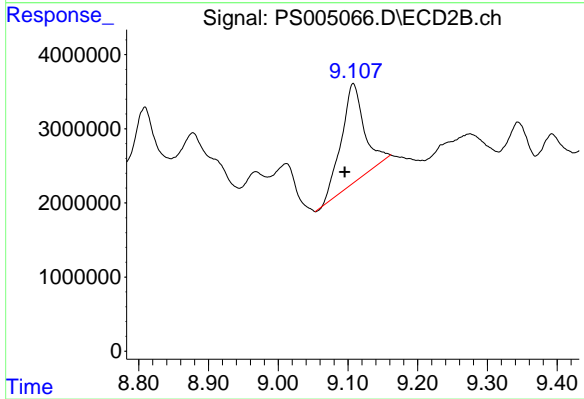
#13 2,4-DB

R.T.: 0.000 min  
 Exp R.T. : 7.838 min  
 Response: 0  
 Conc: N.D.



#15 Picloram

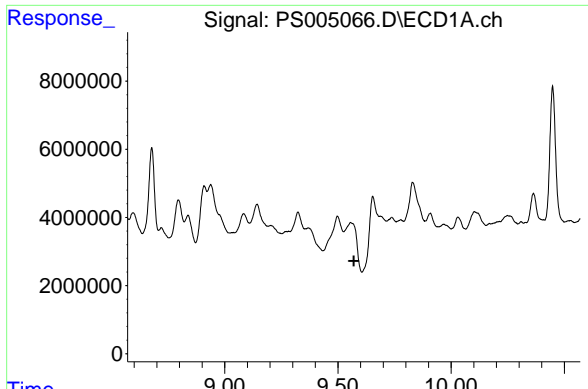
R.T.: 0.000 min  
 Exp R.T. : 9.139 min  
 Response: 0  
 Conc: N.D.



#15 Picloram

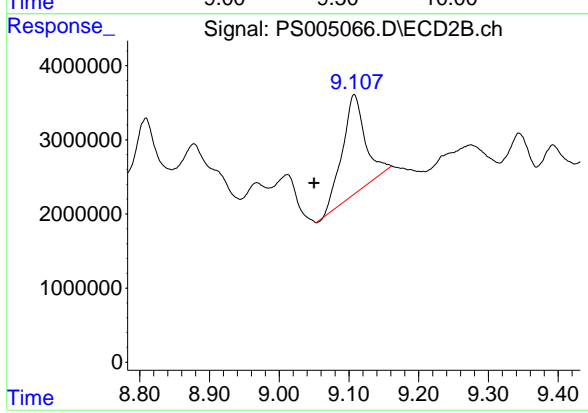
R.T.: 9.108 min  
 Delta R.T.: 0.012 min  
 Response: 30379495  
 Conc: 4.45 ng/ml





#16 DCPA  
 R.T.: 0.000 min  
 Exp R.T.: 9.571 min  
 Response: 0  
 Conc: N.D.

Instrument :  
 ECD\_S  
 ClientSampleId :



#16 DCPA  
 R.T.: 9.108 min  
 Delta R.T.: 0.058 min  
 Response: 30379495  
 Conc: 4.61 ng/ml