

Data Path : Z:\pestpcbsrv\HPCHEM1\ECD_S\Data\PS061721\
 Data File : PS015751.D
 Signal(s) : Signal #1: ECD1A.ch Signal #2: ECD2B.ch
 Acq On : 18 Jun 2021 06:41
 Operator : DD\AJ
 Sample : HSTDCCC750
 Misc :
 ALS Vial : 113 Sample Multiplier: 1

Instrument :
 ECD_S
 ClientSampleId :

Integration File signal 1: autoint1.e
 Integration File signal 2: autoint2.e
 Quant Time: Jun 18 07:00:50 2021
 Quant Method : Z:\pestpcbsrv\HPCHEM1\ECD_S\Method\PS061521.M
 Quant Title : 8080.M
 QLast Update : Tue Jun 15 18:15:49 2021
 Response via : Initial Calibration
 Integrator: ChemStation

Volume Inj. : 2 µl
 Signal #1 Phase : Rtx-CLPesticides Signal #2 Phase: Rtx-CLPesticides2
 Signal #1 Info : 30M x 0.32mm x0.5 Signal #2 Info : 30M x 0.32mm x 0.25µm

	Compound	RT#1	RT#2	Resp#1	Resp#2	ng/ml	ng/ml

System Monitoring Compounds							
4) S	2,4-DCAA	7.190	6.768	1319.7E6	406.3E6	794.298	806.444
Target Compounds							
1) T	Dalapon	3.020	2.521	1569.4E6	462.5E6	777.565	712.138
2) T	3,5-DICHL...	6.408	5.958	1728.9E6	568.5E6	770.323	753.803
3) T	4-Nitroph...	7.017	6.388	676.1E6	223.9E6	743.655	731.797
5) T	DICAMBA	7.382	6.932	4702.9E6	1599.5E6	731.515	770.844
6) T	MCP P	7.553	7.030	369.9E6	128.0E6	68.107	76.814
7) T	MCPA	7.701	7.242	549.8E6	187.9E6	70.235	73.228
8) T	DICHLORPROP	8.075	7.552	1130.1E6	392.5E6	713.726	758.090
9) T	2,4-D	8.303	7.842	1234.4E6	468.0E6	704.368	754.466
10) T	Pentachlo...	8.613	8.271	15574.5E6	5314.3E6	721.599	756.629
11) T	2,4,5-TP ...	9.163	8.632	5952.0E6	2131.2E6	680.908	771.967
12) T	2,4,5-T	9.446	9.009	5995.9E6	2172.6E6	679.164	770.308
13) T	2,4-DB	9.996	9.514	1253.9E6	287.0E6	612.974	768.479 #
14) T	DINOSEB	11.157	9.842	4152.4E6	1547.8E6	641.151	768.448
15) T	Picloram	10.973	10.819	7060.0E6	2701.7E6	516.428	642.418
16) T	DCPA	11.424	10.773	8240.5E6	3260.7E6	623.030	775.590

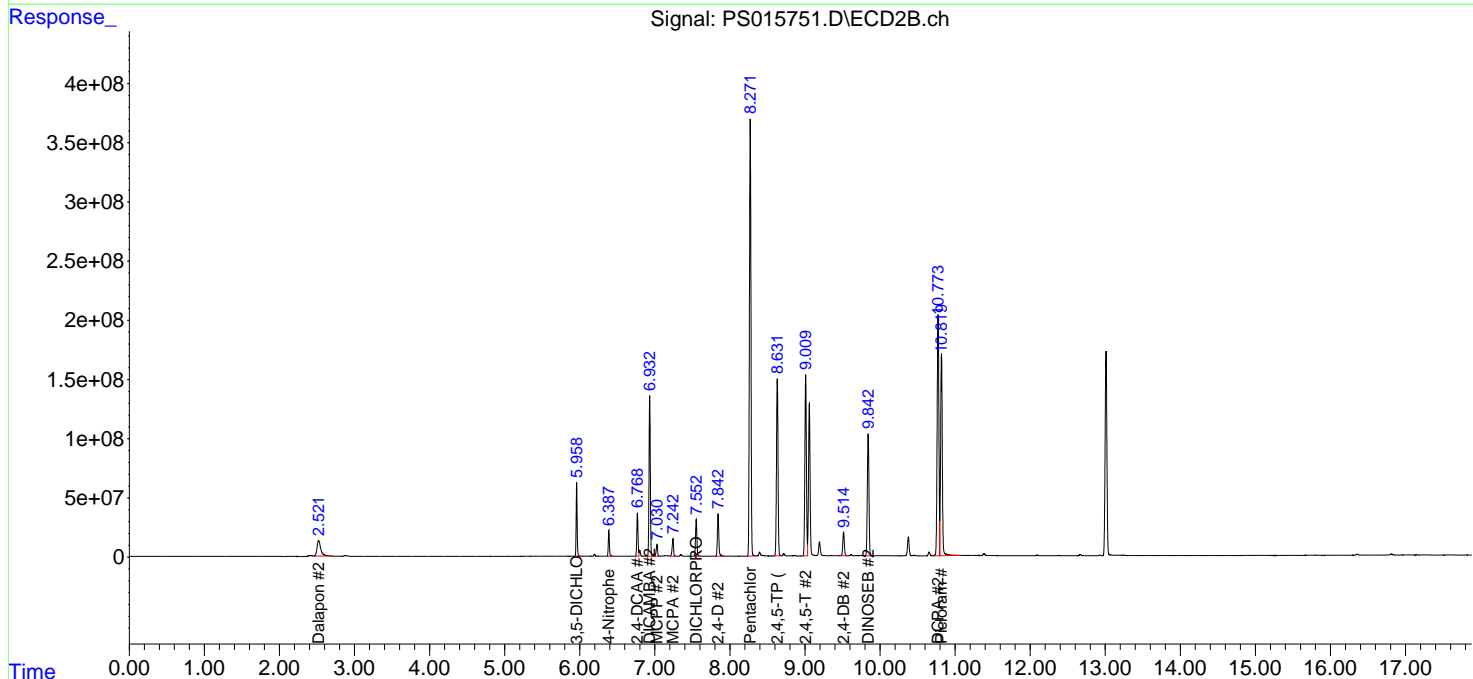
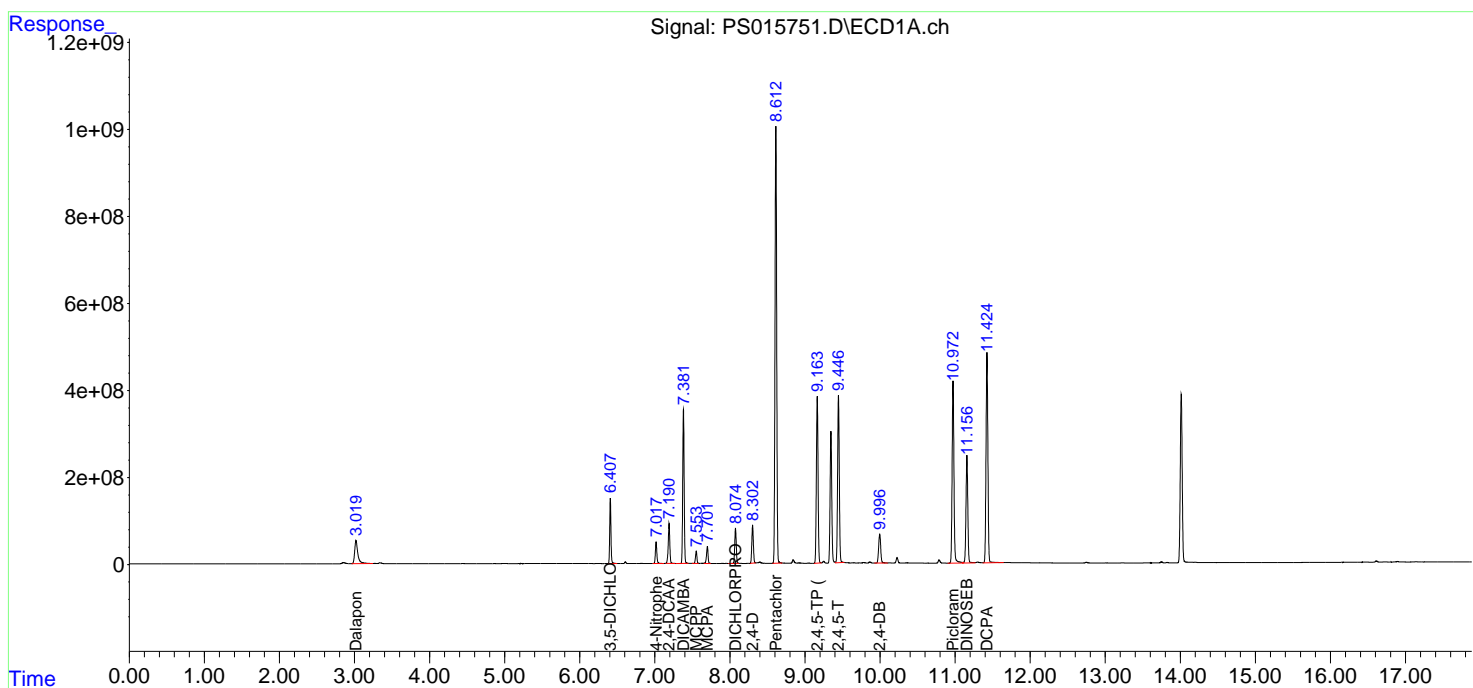
(f)=RT Delta > 1/2 Window (#)=Amounts differ by > 25% (m)=manual int.

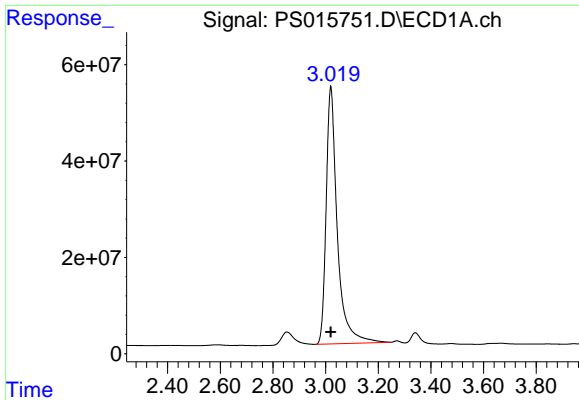
Data Path : Z:\pestpcbsrv\HPCHEM1\ECD_S\Data\PS061721\
 Data File : PS015751.D
 Signal(s) : Signal #1: ECD1A.ch Signal #2: ECD2B.ch
 Acq On : 18 Jun 2021 06:41
 Operator : DD\AJ
 Sample : HSTDCCC750
 Misc :
 ALS Vial : 113 Sample Multiplier: 1

Instrument :
 ECD_S
 ClientSampled :

Integration File signal 1: autoint1.e
 Integration File signal 2: autoint2.e
 Quant Time: Jun 18 07:00:50 2021
 Quant Method : Z:\pestpcbsrv\HPCHEM1\ECD_S\Method\PS061521.M
 Quant Title : 8080.M
 QLast Update : Tue Jun 15 18:15:49 2021
 Response via : Initial Calibration
 Integrator: ChemStation

Volume Inj. : 2 µl
 Signal #1 Phase : Rtx-CLPesticides Signal #2 Phase: Rtx-CLPesticides2
 Signal #1 Info : 30M x 0.32mm x0.5 Signal #2 Info : 30M x 0.32mm x 0.25µm

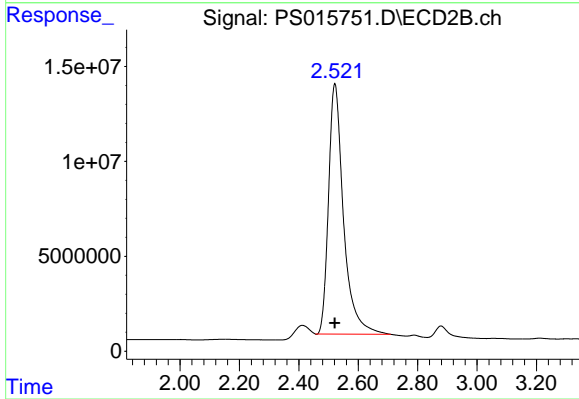




#1 Dalapon

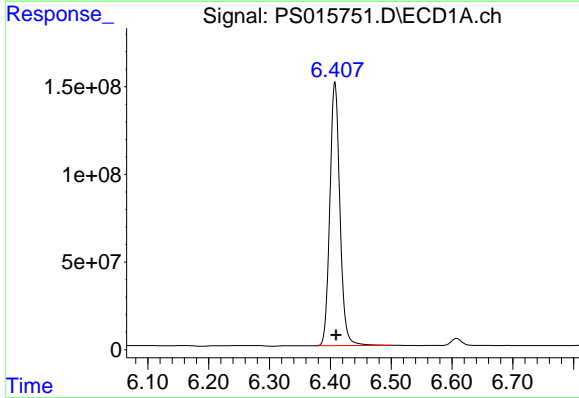
R.T.: 3.020 min
Delta R.T.: 0.000 min
Response: 1569408410
Conc: 777.57 ng/ml

Instrument :
ECD_S
ClientSampleId :



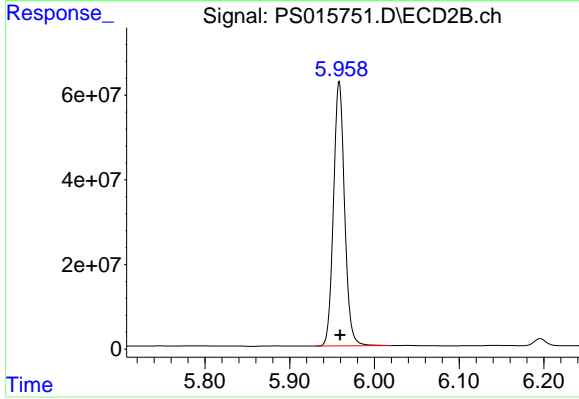
#1 Dalapon

R.T.: 2.521 min
Delta R.T.: 0.000 min
Response: 462520780
Conc: 712.14 ng/ml



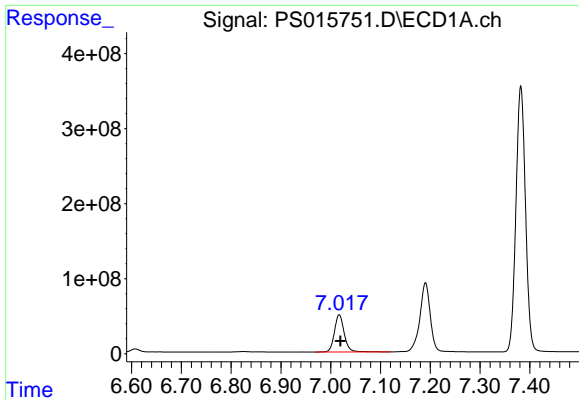
#2 3,5-DICHLOROBENZOIC ACID

R.T.: 6.408 min
Delta R.T.: -0.002 min
Response: 1728945255
Conc: 770.32 ng/ml



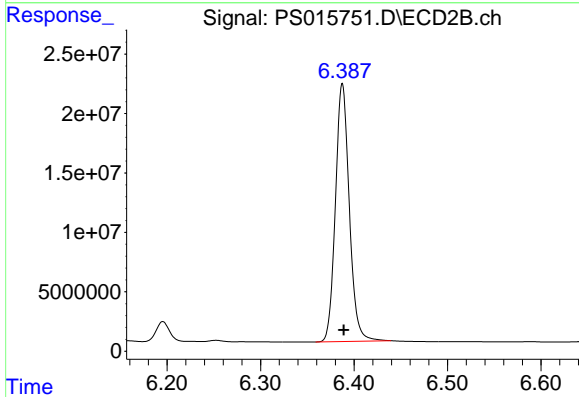
#2 3,5-DICHLOROBENZOIC ACID

R.T.: 5.958 min
Delta R.T.: -0.001 min
Response: 568491117
Conc: 753.80 ng/ml

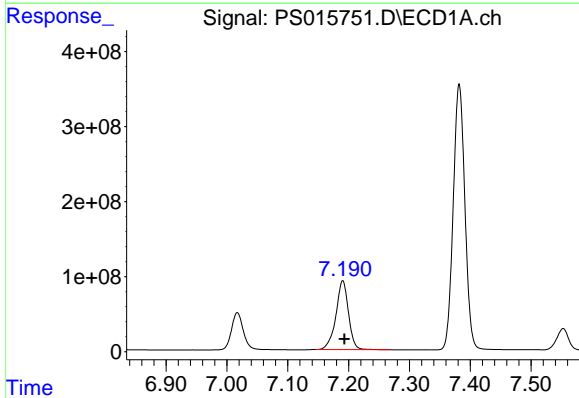


#3 4-Nitrophenol
R.T.: 7.017 min
Delta R.T.: -0.002 min
Response: 676093779
Conc: 743.66 ng/ml

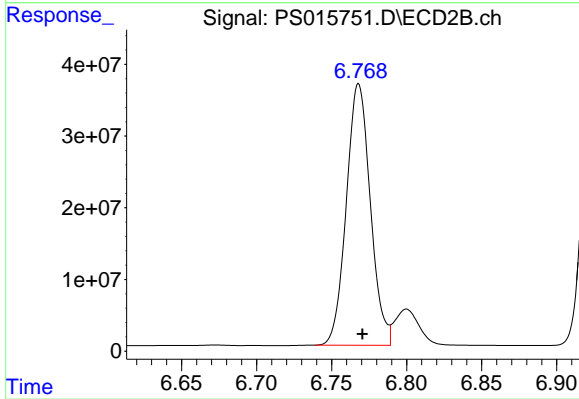
Instrument :
ECD_S
ClientSampled :



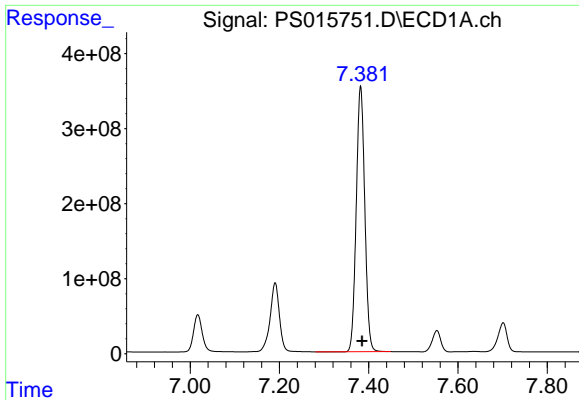
#3 4-Nitrophenol
R.T.: 6.388 min
Delta R.T.: -0.001 min
Response: 223879794
Conc: 731.80 ng/ml



#4 2,4-DCAA
R.T.: 7.190 min
Delta R.T.: -0.003 min
Response: 1319683424
Conc: 794.30 ng/ml

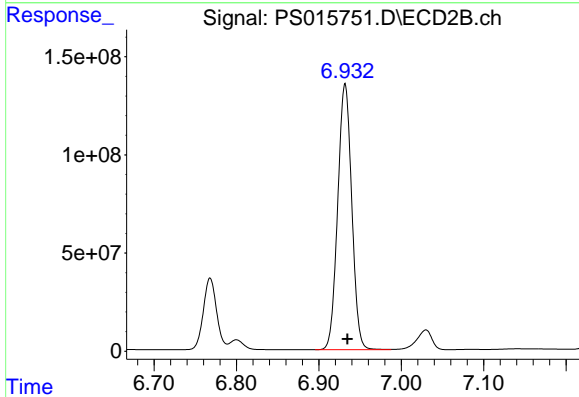


#4 2,4-DCAA
R.T.: 6.768 min
Delta R.T.: -0.003 min
Response: 406328548
Conc: 806.44 ng/ml

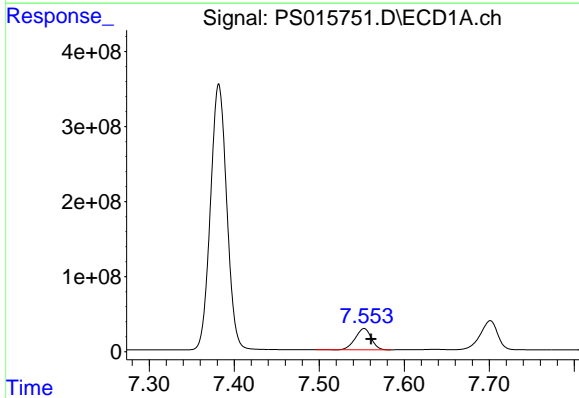


#5 DICAMBA
R.T.: 7.382 min
Delta R.T.: -0.003 min
Response: 4702883716
Conc: 731.51 ng/ml

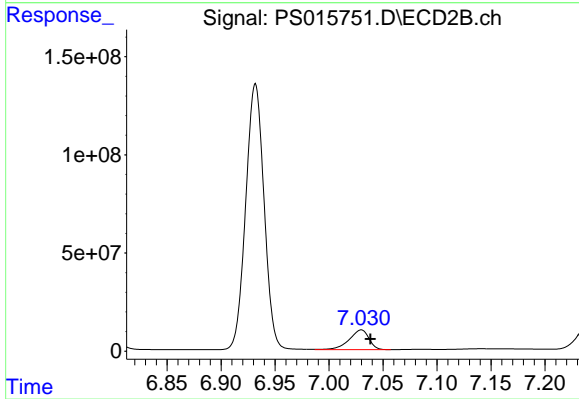
Instrument :
ECD_S
ClientSampleId :



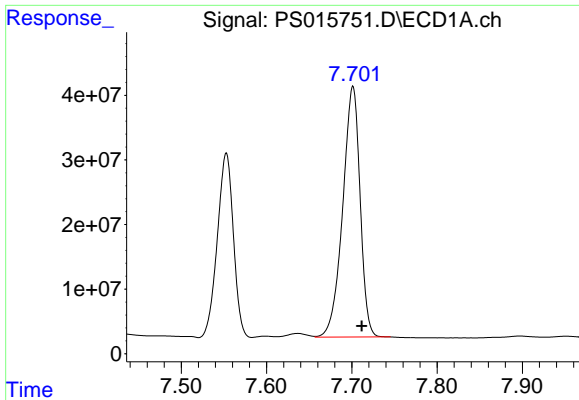
#5 DICAMBA
R.T.: 6.932 min
Delta R.T.: -0.003 min
Response: 1599474870
Conc: 770.84 ng/ml



#6 MCP
R.T.: 7.553 min
Delta R.T.: -0.008 min
Response: 369887650
Conc: 68.11 ug/ml



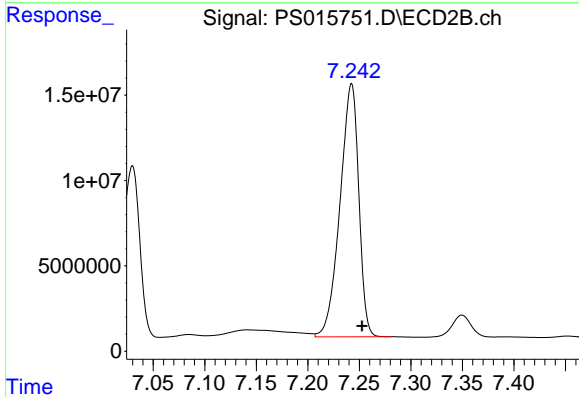
#6 MCP
R.T.: 7.030 min
Delta R.T.: -0.008 min
Response: 128032859
Conc: 76.81 ug/ml



#7 MCPA

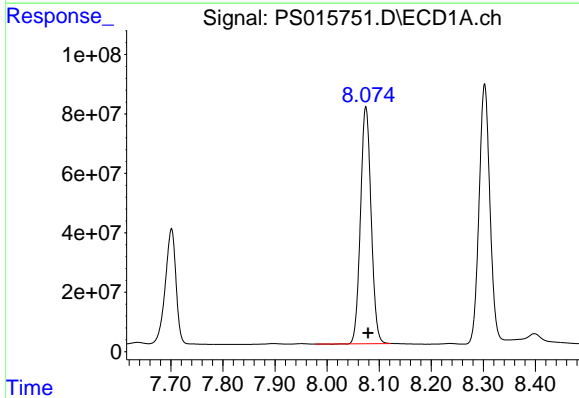
R.T.: 7.701 min
 Delta R.T.: -0.010 min
 Response: 549815660
 Conc: 70.24 ug/ml

Instrument :
 ECD_S
 ClientSampled :



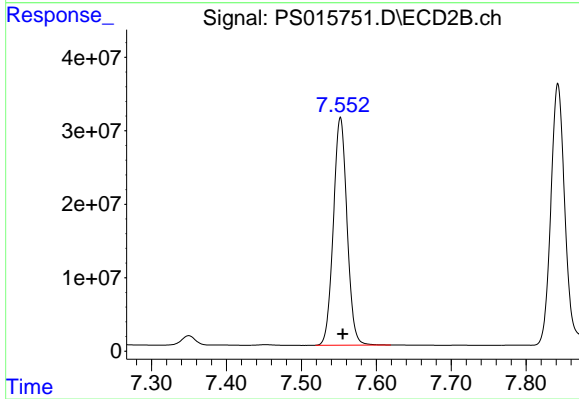
#7 MCPA

R.T.: 7.242 min
 Delta R.T.: -0.010 min
 Response: 187859493
 Conc: 73.23 ug/ml



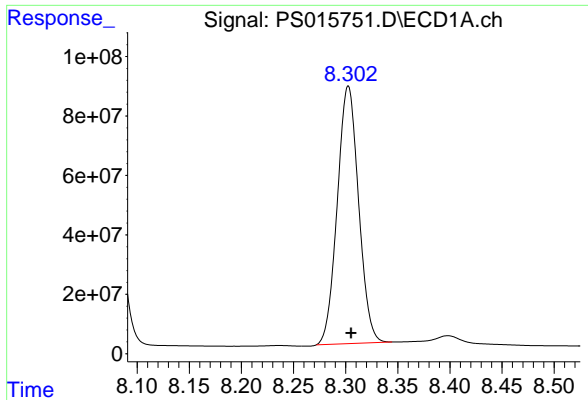
#8 DICHLORPROP

R.T.: 8.075 min
 Delta R.T.: -0.004 min
 Response: 1130081775
 Conc: 713.73 ng/ml



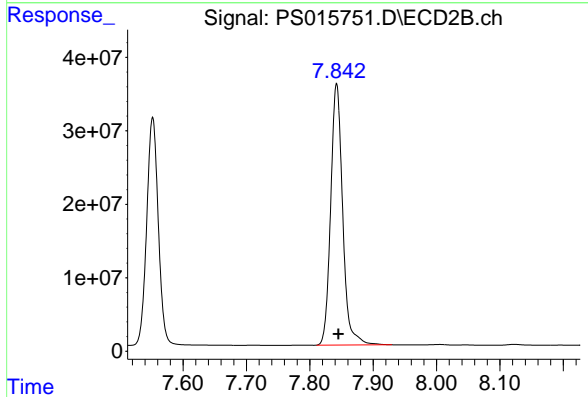
#8 DICHLORPROP

R.T.: 7.552 min
 Delta R.T.: -0.003 min
 Response: 392497292
 Conc: 758.09 ng/ml

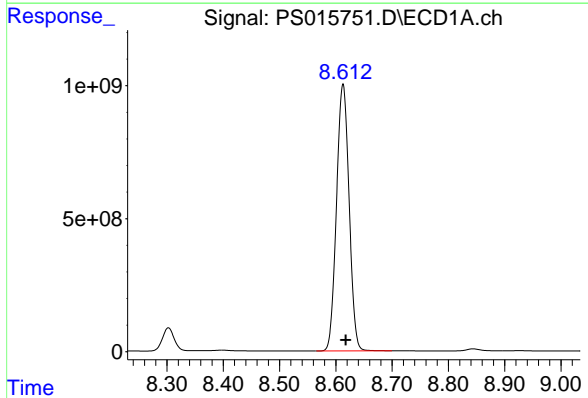


#9 2,4-D
 R.T.: 8.303 min
 Delta R.T.: -0.003 min
 Response: 1234445477
 Conc: 704.37 ng/ml

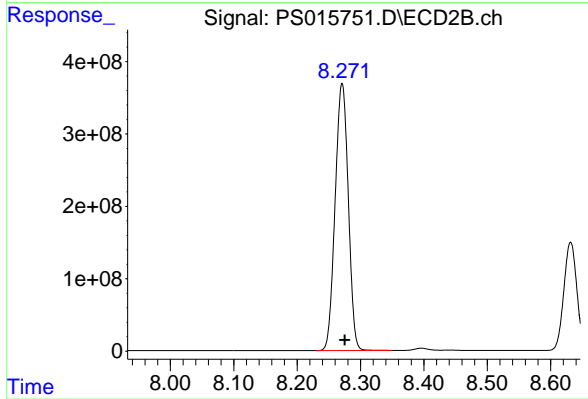
Instrument :
 ECD_S
 ClientSampled :



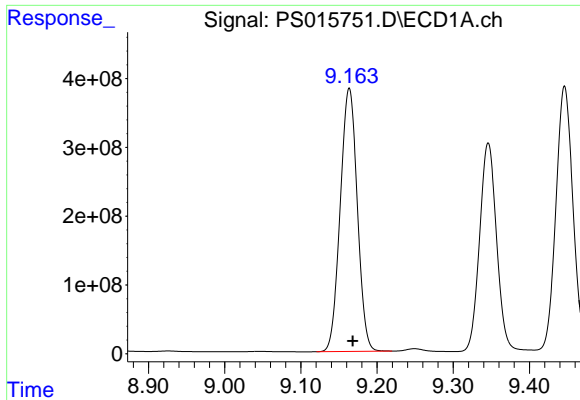
#9 2,4-D
 R.T.: 7.842 min
 Delta R.T.: -0.003 min
 Response: 467986372
 Conc: 754.47 ng/ml



#10 Pentachlorophenol
 R.T.: 8.613 min
 Delta R.T.: -0.005 min
 Response: 15574527194
 Conc: 721.60 ng/ml

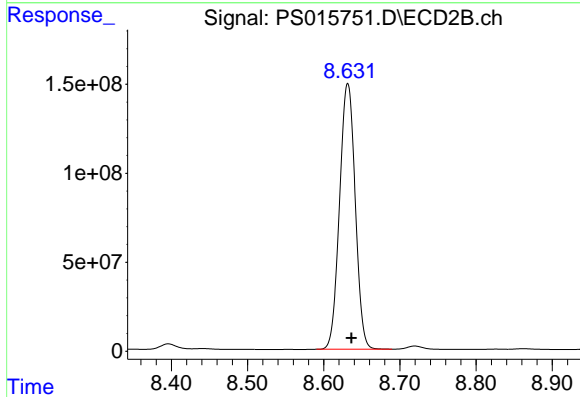


#10 Pentachlorophenol
 R.T.: 8.271 min
 Delta R.T.: -0.004 min
 Response: 5314311413
 Conc: 756.63 ng/ml

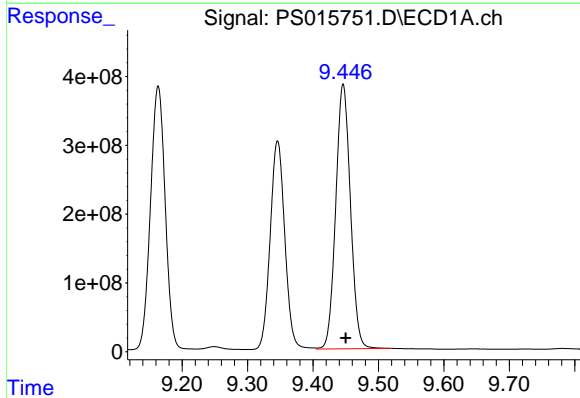


#11 2,4,5-TP (SILVEX)
 R.T.: 9.163 min
 Delta R.T.: -0.004 min
 Response: 5951965863
 Conc: 680.91 ng/ml

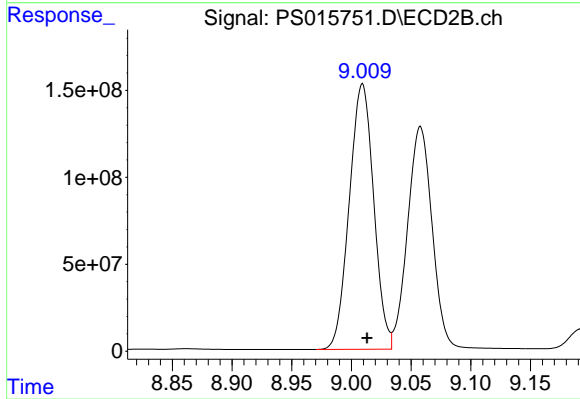
Instrument :
 ECD_S
 ClientSampled :



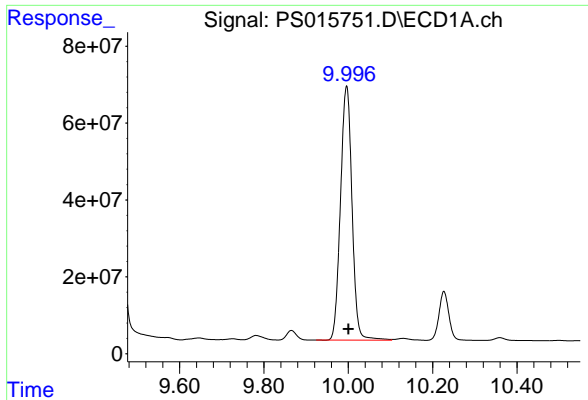
#11 2,4,5-TP (SILVEX)
 R.T.: 8.632 min
 Delta R.T.: -0.005 min
 Response: 2131181796
 Conc: 771.97 ng/ml



#12 2,4,5-T
 R.T.: 9.446 min
 Delta R.T.: -0.004 min
 Response: 5995874459
 Conc: 679.16 ng/ml



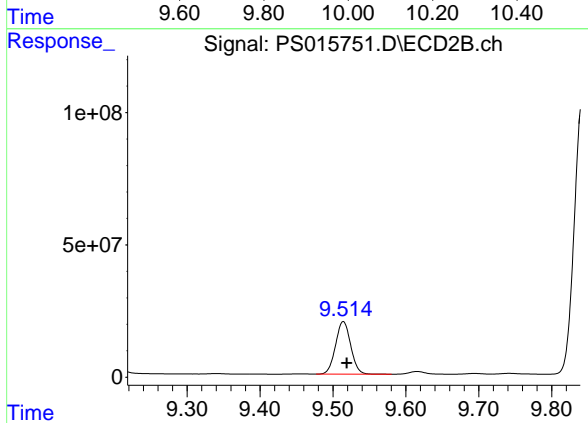
#12 2,4,5-T
 R.T.: 9.009 min
 Delta R.T.: -0.004 min
 Response: 2172613073
 Conc: 770.31 ng/ml



#13 2,4-DB

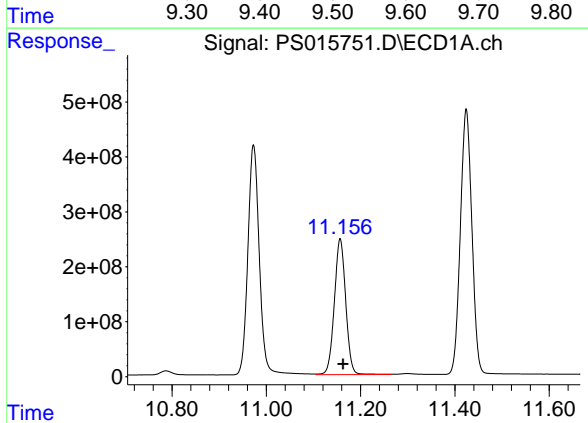
R.T.: 9.996 min
Delta R.T.: -0.004 min
Response: 1253864904
Conc: 612.97 ng/ml

Instrument :
ECD_S
ClientSampleId :



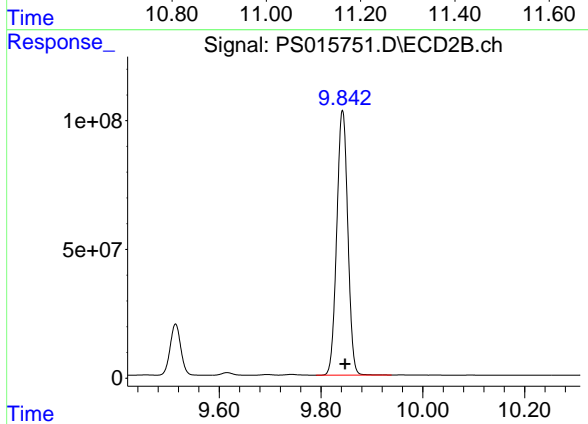
#13 2,4-DB

R.T.: 9.514 min
Delta R.T.: -0.005 min
Response: 287018840
Conc: 768.48 ng/ml



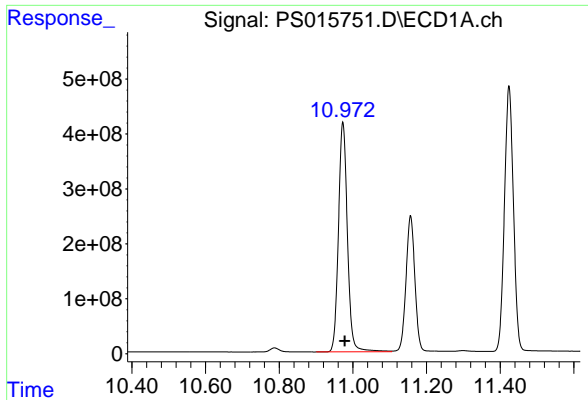
#14 DINOSEB

R.T.: 11.157 min
Delta R.T.: -0.007 min
Response: 4152404937
Conc: 641.15 ng/ml



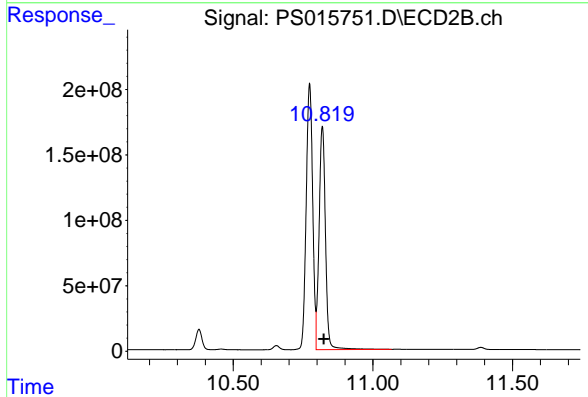
#14 DINOSEB

R.T.: 9.842 min
Delta R.T.: -0.005 min
Response: 1547753748
Conc: 768.45 ng/ml

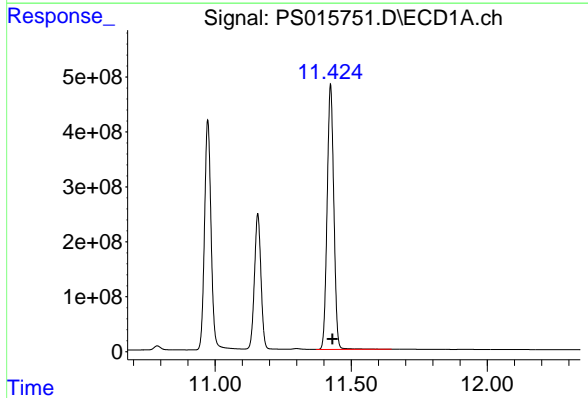


#15 Picloram
 R.T.: 10.973 min
 Delta R.T.: -0.005 min
 Response: 7059997835
 Conc: 516.43 ng/ml

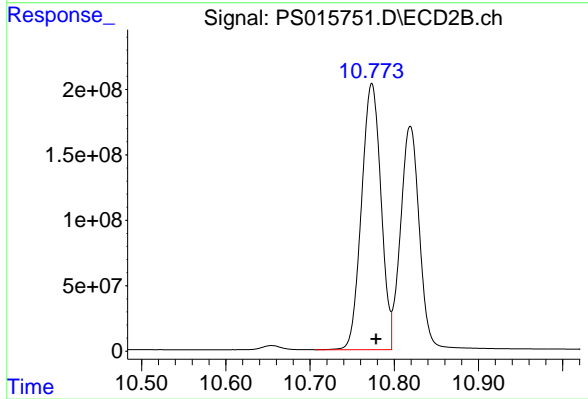
Instrument :
 ECD_S
 ClientSampled :



#15 Picloram
 R.T.: 10.819 min
 Delta R.T.: -0.005 min
 Response: 2701727025
 Conc: 642.42 ng/ml



#16 DCPA
 R.T.: 11.424 min
 Delta R.T.: -0.007 min
 Response: 8240451878
 Conc: 623.03 ng/ml



#16 DCPA
 R.T.: 10.773 min
 Delta R.T.: -0.005 min
 Response: 3260746304
 Conc: 775.59 ng/ml