

Data Path : Z:\pestpcbsrv\HPCHEM1\ECD_S\Data\PS061722\
 Data File : PS019751.D
 Signal(s) : Signal #1: ECD1A.ch Signal #2: ECD2B.ch
 Acq On : 17 Jun 2022 18:06
 Operator : AJ\MA
 Sample : HSTDCCC750
 Misc :
 ALS Vial : 3 Sample Multiplier: 1

Instrument :
 ECD_S
 ClientSampleId :

Integration File signal 1: autoint1.e
 Integration File signal 2: autoint2.e
 Quant Time: Jun 17 19:11:51 2022
 Quant Method : Z:\pestpcbsrv\HPCHEM1\ECD_S\Method\PS052422.M
 Quant Title : 8080.M
 QLast Update : Wed May 25 02:05:34 2022
 Response via : Initial Calibration
 Integrator: ChemStation

Volume Inj. : 2 µl
 Signal #1 Phase : Rtx-CLPesticides Signal #2 Phase: Rtx-CLPesticides2
 Signal #1 Info : 30M x 0.32mm x0.5 Signal #2 Info : 30M x 0.32mm x 0.25µm

	Compound	RT#1	RT#2	Resp#1	Resp#2	ng/ml	ng/ml

System Monitoring Compounds							
4) S	2,4-DCAA	7.196	6.781	1941.1E6	724.5E6	809.059	934.974
Target Compounds							
1) T	Dalapon	3.015	2.526	3459.1E6	728.9E6	682.428	726.443
2) T	3,5-DICHL...	6.411	5.961	2369.2E6	905.1E6	749.602	755.089
3) T	4-Nitroph...	7.029	6.399	837.7E6	319.9E6	853.671	747.413
5) T	DICAMBA	7.386	6.945	7193.2E6	2621.4E6	757.362	766.850
6) T	MCP P	7.555	7.042	579.9E6	206.9E6	77.265	76.442
7) T	MCPA	7.704	7.254	811.8E6	287.3E6	75.136	74.771
8) T	DICHLORPROP	8.077	7.565	1903.7E6	669.5E6	743.441	757.909
9) T	2,4-D	8.307	7.857	2201.7E6	805.6E6	769.947	755.296
10) T	Pentachlo...	8.613	8.281	25790.3E6	8850.3E6	745.624	759.273
11) T	2,4,5-TP ...	9.163	8.642	11459.1E6	3853.2E6	729.835	766.469
12) T	2,4,5-T	9.449	9.020	13599.7E6	3616.9E6	722.634	769.021
13) T	2,4-DB	10.002	9.525	3059.5E6	477.1E6	756.186	772.055
14) T	DINOSEB	11.154	9.849	11824.3E6	2706.8E6	764.476	761.922
15) T	Picloram	10.981	10.832	20615.0E6	4267.3E6	694.641	663.421
16) T	DCPA	11.423	10.778	18589.5E6	4719.1E6	771.220	764.537

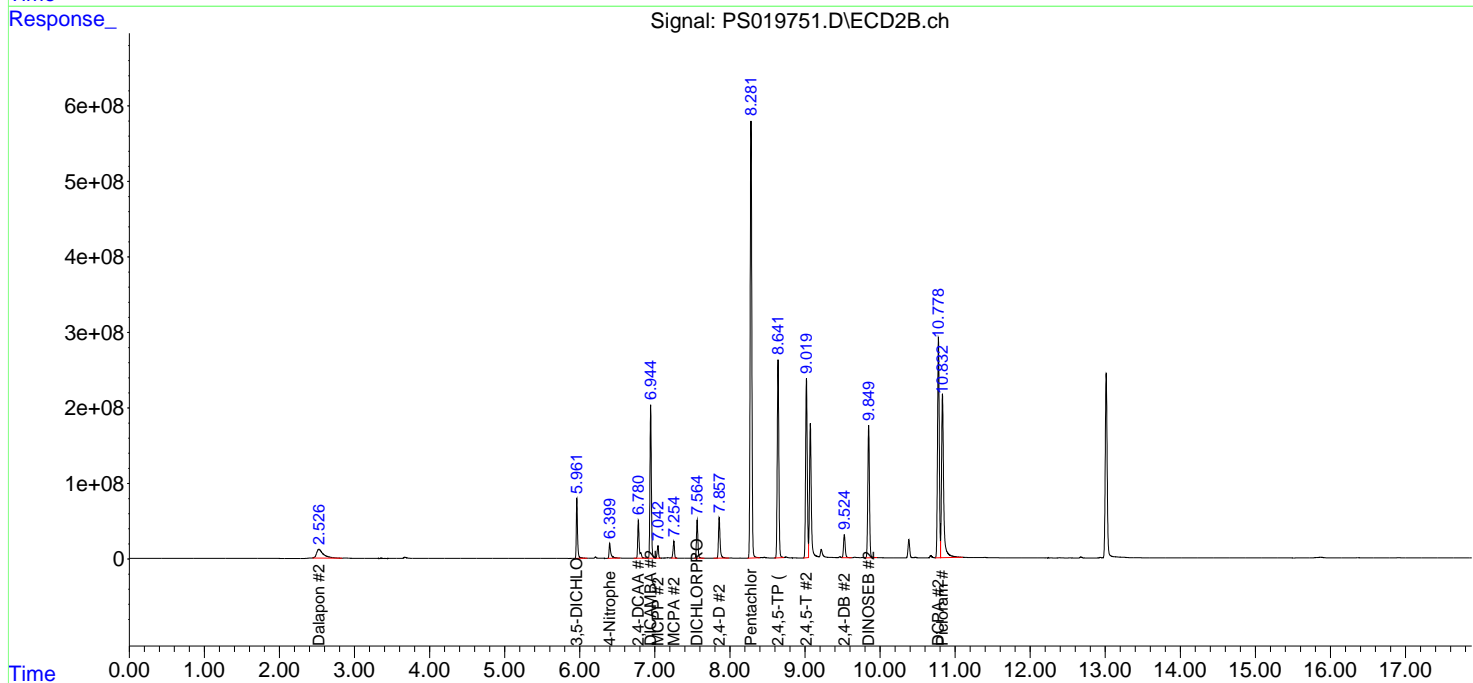
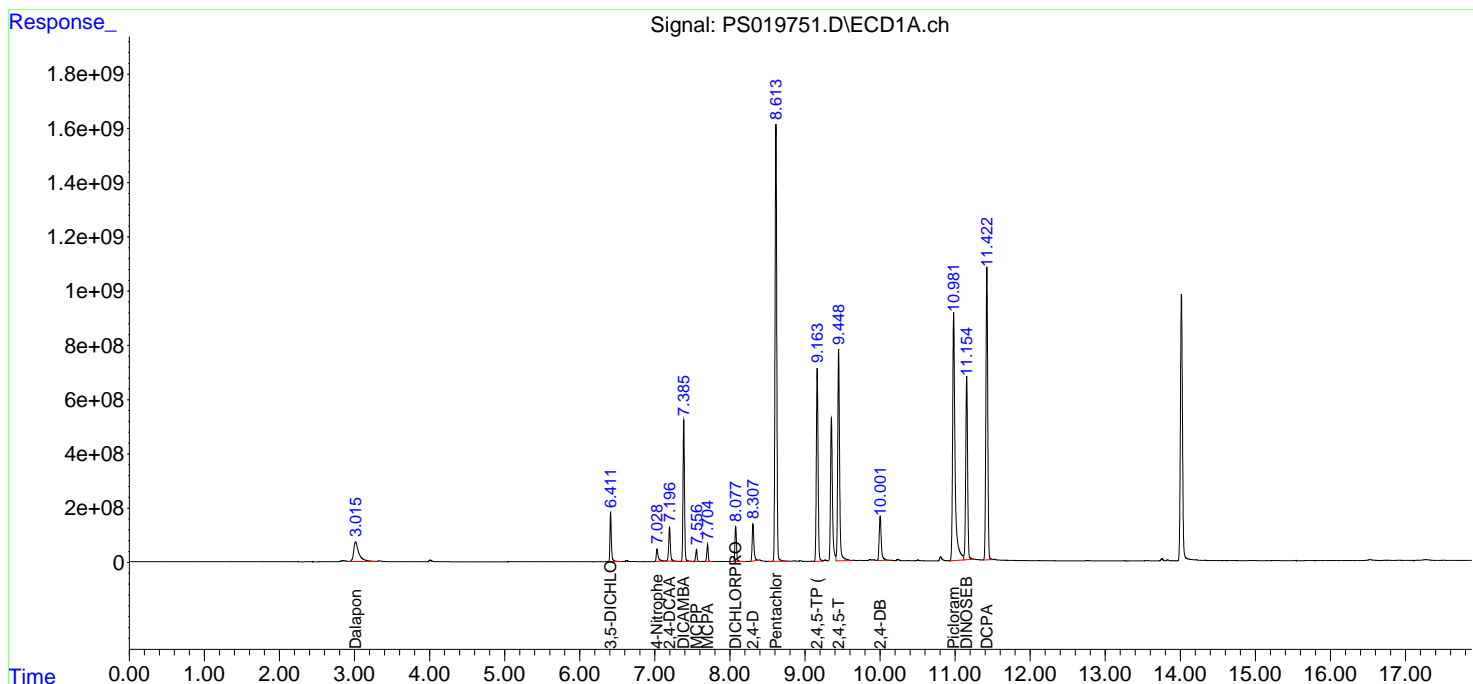
(f)=RT Delta > 1/2 Window (#)=Amounts differ by > 25% (m)=manual int.

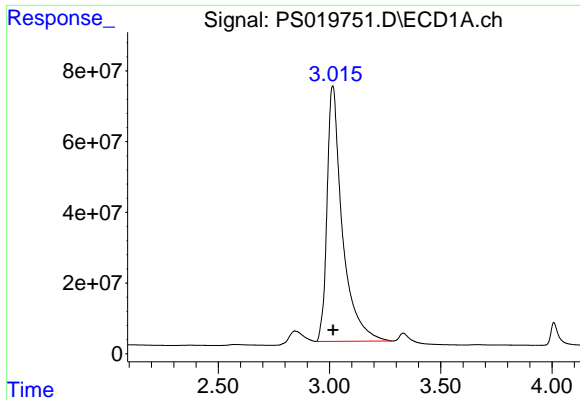
Data Path : Z:\pestpcbsrv\HPCHEM1\ECD_S\Data\PS061722\
 Data File : PS019751.D
 Signal(s) : Signal #1: ECD1A.ch Signal #2: ECD2B.ch
 Acq On : 17 Jun 2022 18:06
 Operator : AJ\MA
 Sample : HSTDCCC750
 Misc :
 ALS Vial : 3 Sample Multiplier: 1

Instrument :
 ECD_S
 ClientSampleId :

Integration File signal 1: autoint1.e
 Integration File signal 2: autoint2.e
 Quant Time: Jun 17 19:11:51 2022
 Quant Method : Z:\pestpcbsrv\HPCHEM1\ECD_S\Method\PS052422.M
 Quant Title : 8080.M
 QLast Update : Wed May 25 02:05:34 2022
 Response via : Initial Calibration
 Integrator: ChemStation

Volume Inj. : 2 µl
 Signal #1 Phase : Rtx-CLPesticides Signal #2 Phase: Rtx-CLPesticides2
 Signal #1 Info : 30M x 0.32mm x0.5 Signal #2 Info : 30M x 0.32mm x 0.25µm

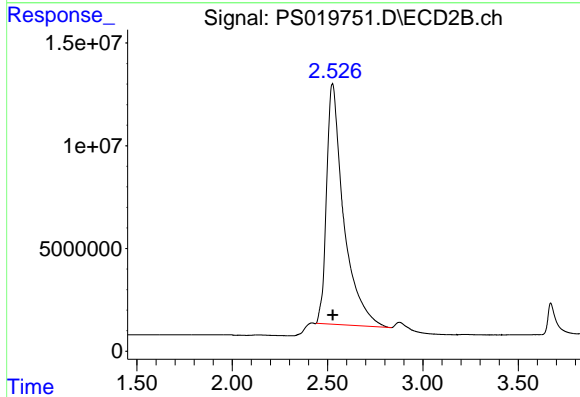




#1 Dalapon

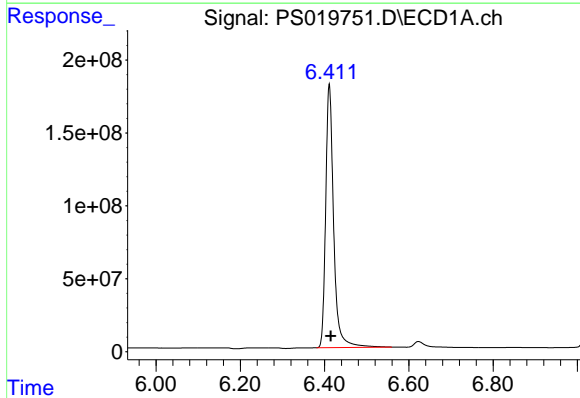
R.T.: 3.015 min
 Delta R.T.: -0.001 min
 Response: 3459069608
 Conc: 682.43 ng/ml

Instrument :
 ECD_S
 ClientSampleId :



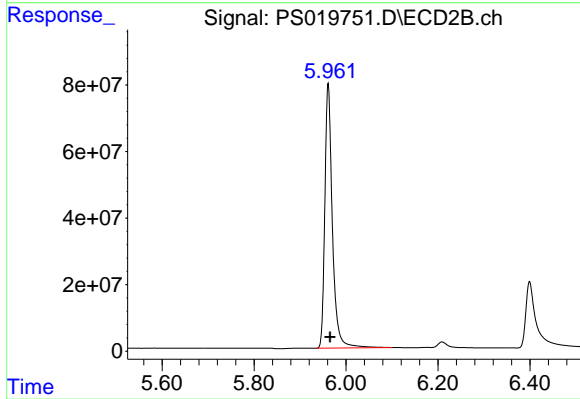
#1 Dalapon

R.T.: 2.526 min
 Delta R.T.: -0.002 min
 Response: 728943361
 Conc: 726.44 ng/ml



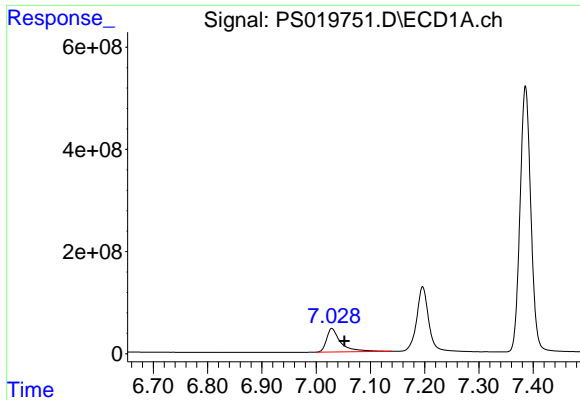
#2 3,5-DICHLOROBENZOIC ACID

R.T.: 6.411 min
 Delta R.T.: -0.003 min
 Response: 2369220875
 Conc: 749.60 ng/ml



#2 3,5-DICHLOROBENZOIC ACID

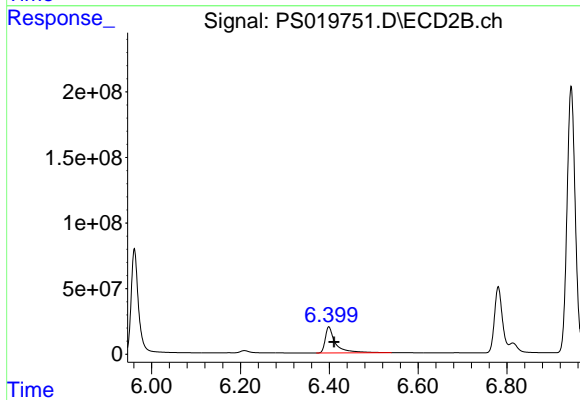
R.T.: 5.961 min
 Delta R.T.: -0.004 min
 Response: 905104832
 Conc: 755.09 ng/ml



#3 4-Nitrophenol

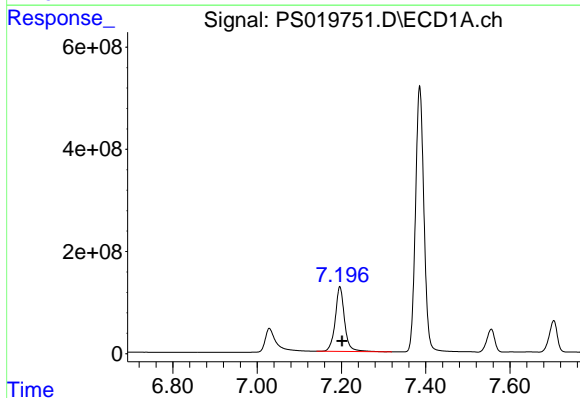
R.T.: 7.029 min
Delta R.T.: -0.023 min
Response: 837722869
Conc: 853.67 ng/ml

Instrument :
ECD_S
ClientSampleId :



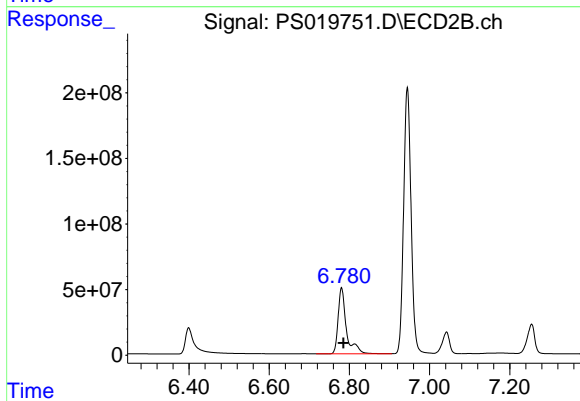
#3 4-Nitrophenol

R.T.: 6.399 min
Delta R.T.: -0.011 min
Response: 319919521
Conc: 747.41 ng/ml



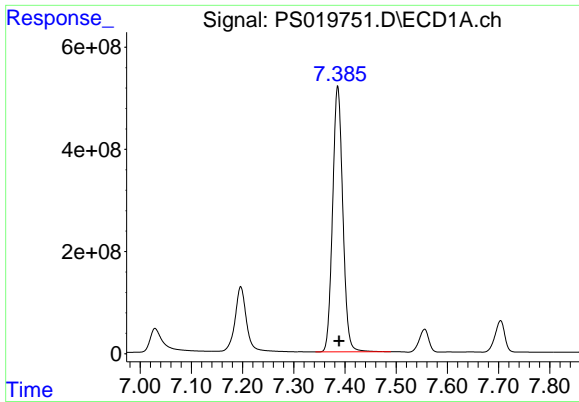
#4 2,4-DCAA

R.T.: 7.196 min
Delta R.T.: -0.006 min
Response: 1941067519
Conc: 809.06 ng/ml



#4 2,4-DCAA

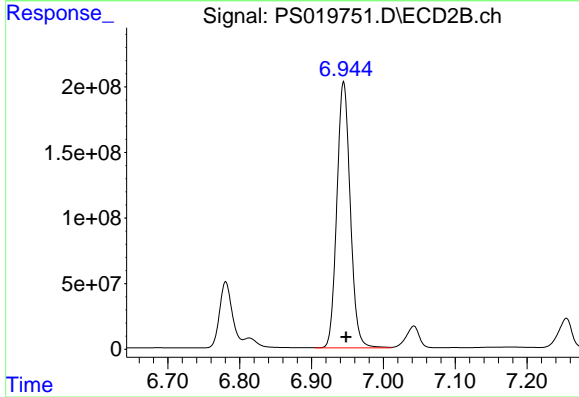
R.T.: 6.781 min
Delta R.T.: -0.004 min
Response: 724483422
Conc: 934.97 ng/ml



#5 DICAMBA

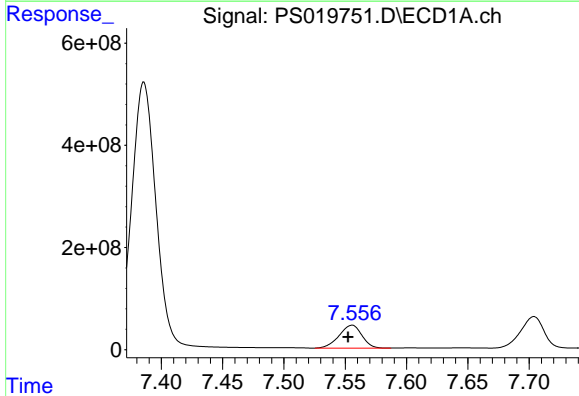
R.T.: 7.386 min
 Delta R.T.: -0.003 min
 Response: 7193241456
 Conc: 757.36 ng/ml

Instrument :
 ECD_S
 ClientSampleId :



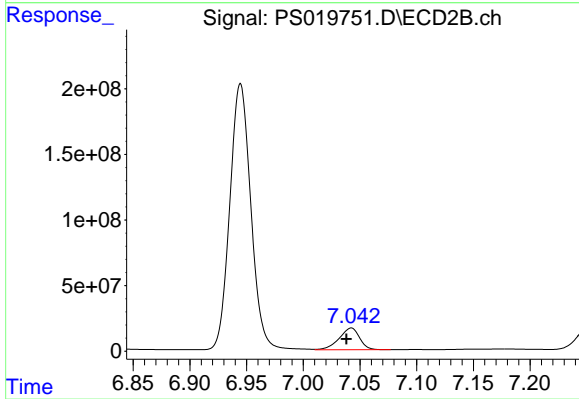
#5 DICAMBA

R.T.: 6.945 min
 Delta R.T.: -0.003 min
 Response: 2621434922
 Conc: 766.85 ng/ml



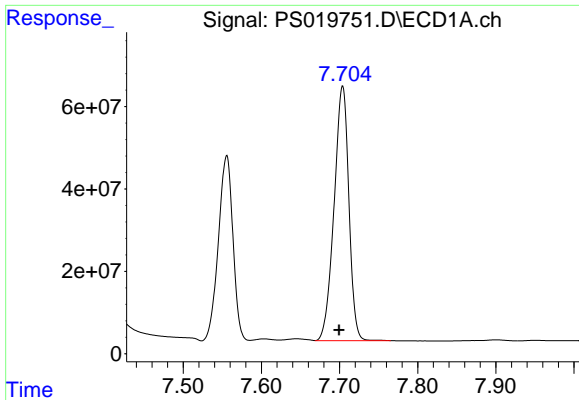
#6 MCPP

R.T.: 7.555 min
 Delta R.T.: 0.003 min
 Response: 579917030
 Conc: 77.27 ug/ml



#6 MCPP

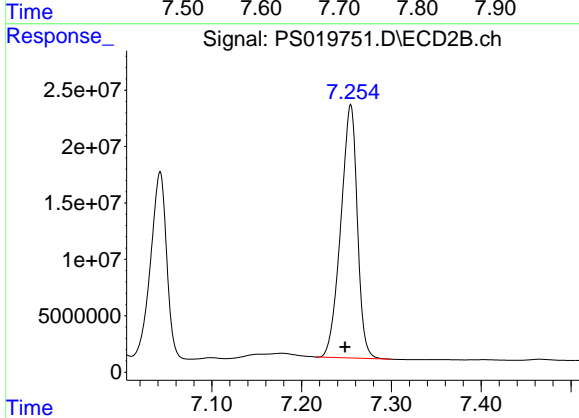
R.T.: 7.042 min
 Delta R.T.: 0.004 min
 Response: 206930554
 Conc: 76.44 ug/ml



#7 MCPA

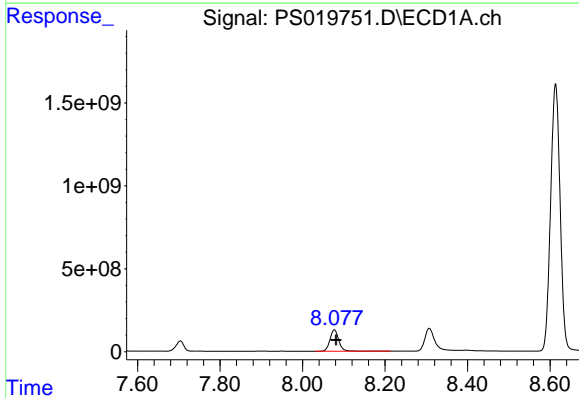
R.T.: 7.704 min
 Delta R.T.: 0.004 min
 Response: 811763780
 Conc: 75.14 ug/ml

Instrument :
 ECD_S
 ClientSampleId :



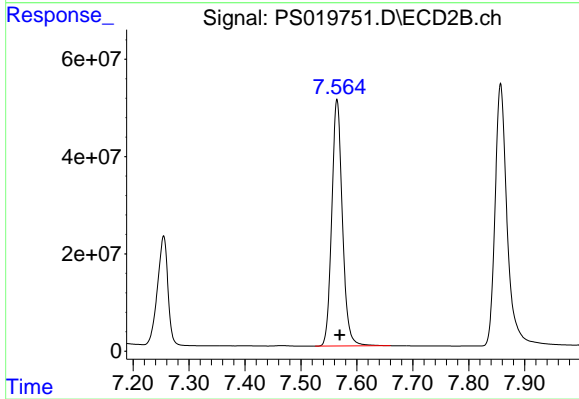
#7 MCPA

R.T.: 7.254 min
 Delta R.T.: 0.006 min
 Response: 287310257
 Conc: 74.77 ug/ml



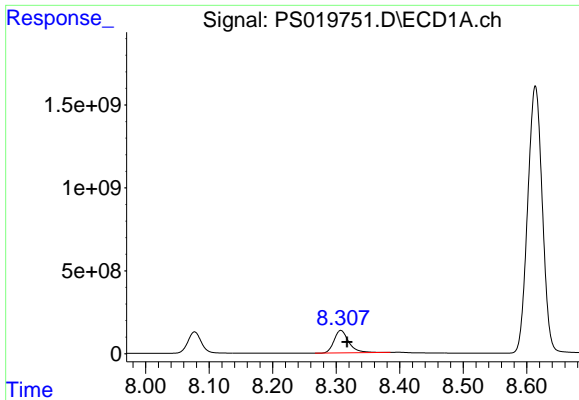
#8 DICHLORPROP

R.T.: 8.077 min
 Delta R.T.: -0.004 min
 Response: 1903664040
 Conc: 743.44 ng/ml



#8 DICHLORPROP

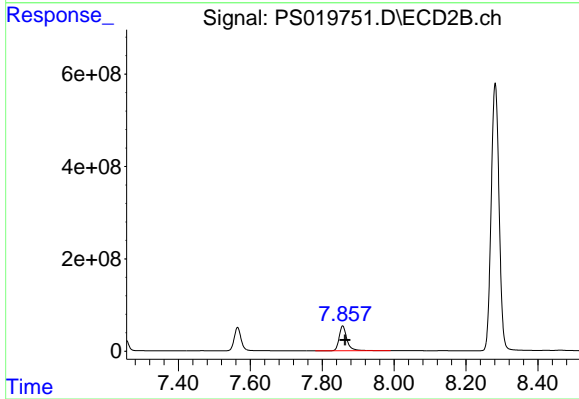
R.T.: 7.565 min
 Delta R.T.: -0.005 min
 Response: 669515591
 Conc: 757.91 ng/ml



#9 2,4-D

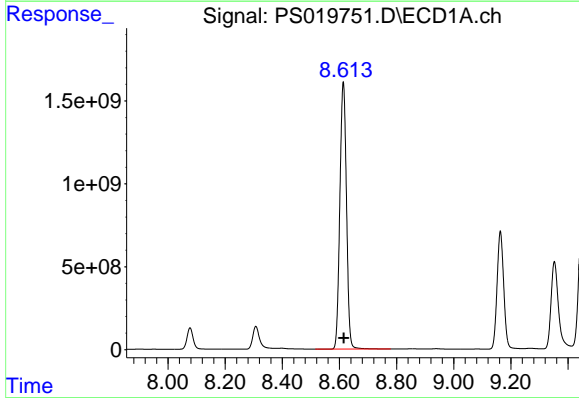
R.T.: 8.307 min
Delta R.T.: -0.010 min
Response: 2201654926
Conc: 769.95 ng/ml

Instrument :
ECD_S
ClientSampleId :



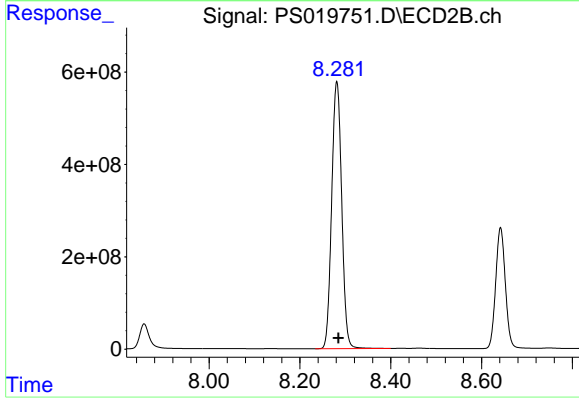
#9 2,4-D

R.T.: 7.857 min
Delta R.T.: -0.007 min
Response: 805619756
Conc: 755.30 ng/ml



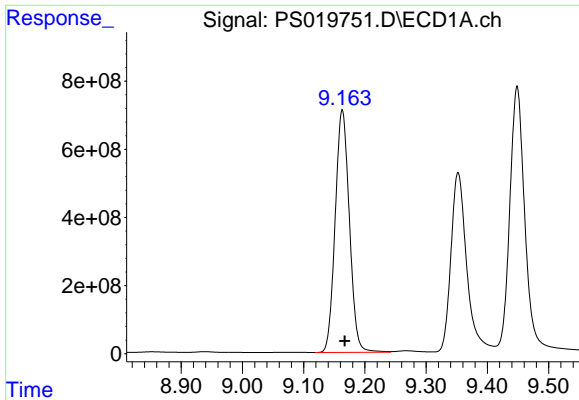
#10 Pentachlorophenol

R.T.: 8.613 min
Delta R.T.: -0.002 min
Response: 25790312072
Conc: 745.62 ng/ml



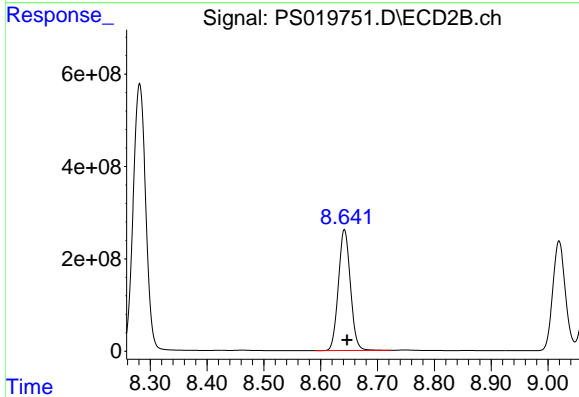
#10 Pentachlorophenol

R.T.: 8.281 min
Delta R.T.: -0.003 min
Response: 8850270058
Conc: 759.27 ng/ml

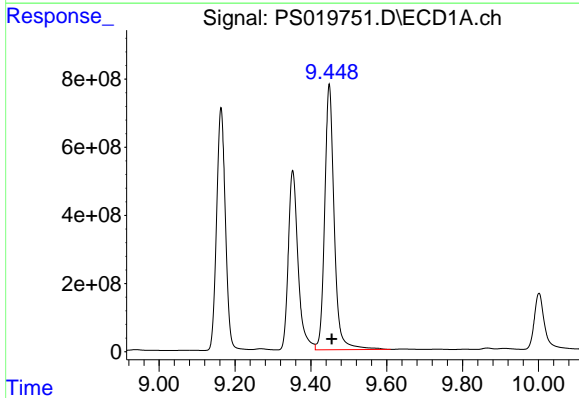


#11 2,4,5-TP (SILVEX)
 R.T.: 9.163 min
 Delta R.T.: -0.004 min
 Response: 11459095917
 Conc: 729.83 ng/ml

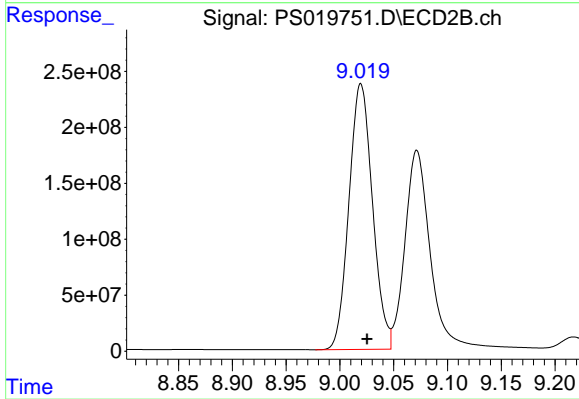
Instrument :
 ECD_S
 ClientSampleId :



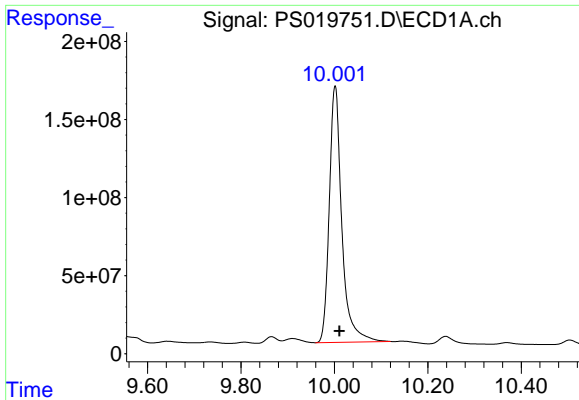
#11 2,4,5-TP (SILVEX)
 R.T.: 8.642 min
 Delta R.T.: -0.005 min
 Response: 3853167695
 Conc: 766.47 ng/ml



#12 2,4,5-T
 R.T.: 9.449 min
 Delta R.T.: -0.006 min
 Response: 13599728222
 Conc: 722.63 ng/ml



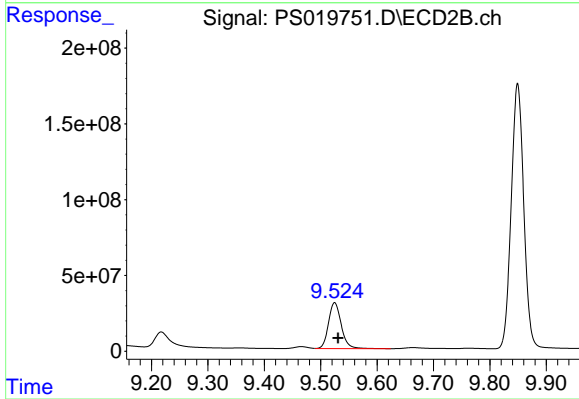
#12 2,4,5-T
 R.T.: 9.020 min
 Delta R.T.: -0.006 min
 Response: 3616866763
 Conc: 769.02 ng/ml



#13 2,4-DB

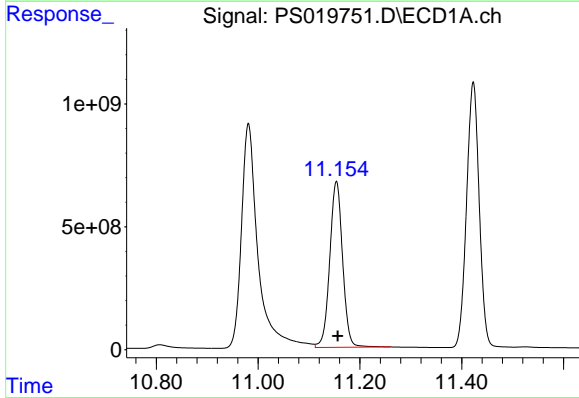
R.T.: 10.002 min
 Delta R.T.: -0.009 min
 Response: 3059543102
 Conc: 756.19 ng/ml

Instrument :
 ECD_S
 ClientSampleId :



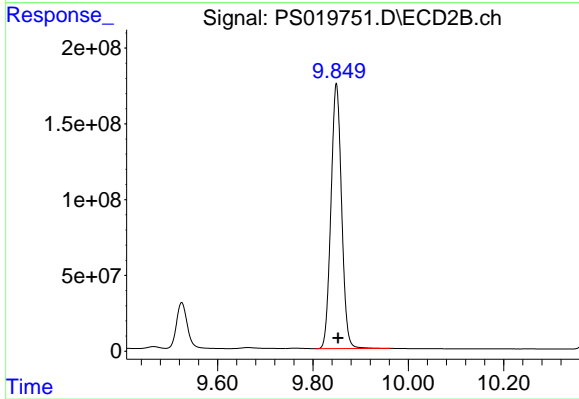
#13 2,4-DB

R.T.: 9.525 min
 Delta R.T.: -0.006 min
 Response: 477102981
 Conc: 772.05 ng/ml



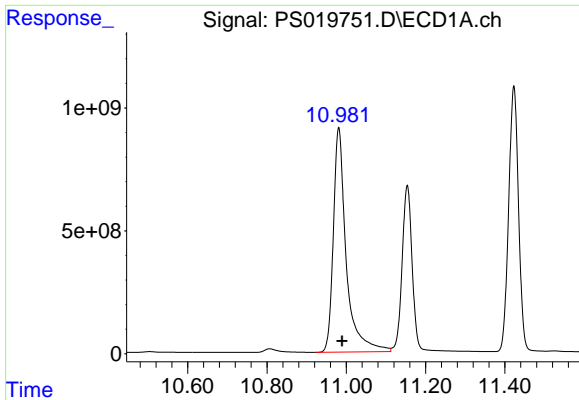
#14 DINOSEB

R.T.: 11.154 min
 Delta R.T.: -0.003 min
 Response: 11824271472
 Conc: 764.48 ng/ml



#14 DINOSEB

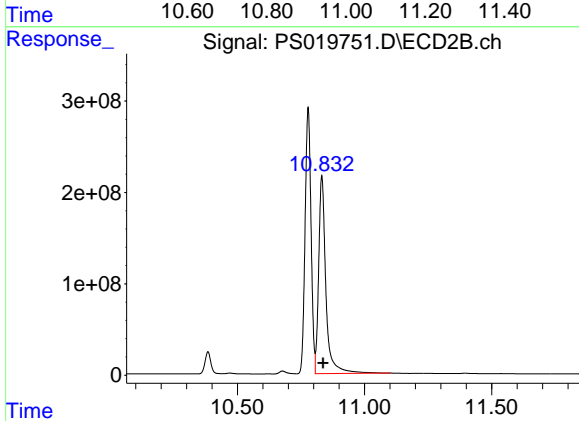
R.T.: 9.849 min
 Delta R.T.: -0.004 min
 Response: 2706819550
 Conc: 761.92 ng/ml



#15 Picloram

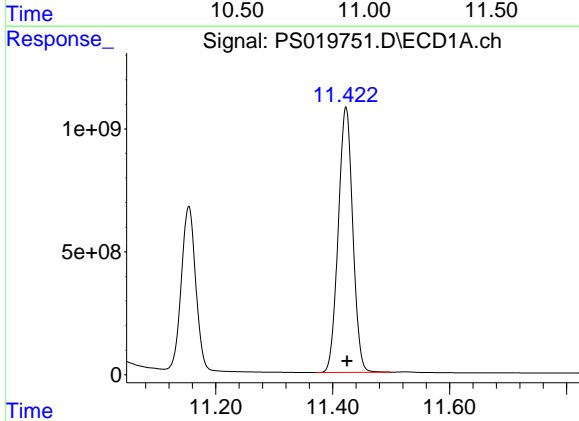
R.T.: 10.981 min
 Delta R.T.: -0.009 min
 Response: 20615029086
 Conc: 694.64 ng/ml

Instrument :
 ECD_S
 ClientSampleId :



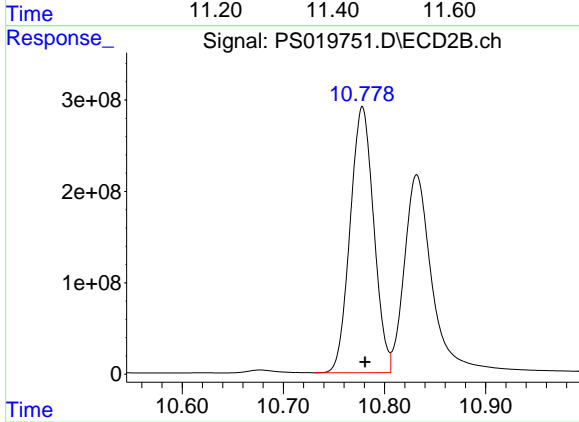
#15 Picloram

R.T.: 10.832 min
 Delta R.T.: -0.005 min
 Response: 4267296112
 Conc: 663.42 ng/ml



#16 DCPA

R.T.: 11.423 min
 Delta R.T.: -0.002 min
 Response: 18589504827
 Conc: 771.22 ng/ml



#16 DCPA

R.T.: 10.778 min
 Delta R.T.: -0.003 min
 Response: 4719093128
 Conc: 764.54 ng/ml