

Data Path : Z:\pestpcbsrv\HPCHEM1\ECD\_S\Data\PS061725\  
 Data File : PS030722.D  
 Signal(s) : Signal #1: ECD1A.ch Signal #2: ECD2B.ch  
 Acq On : 17 Jun 2025 18:16  
 Operator : AR\AJ  
 Sample : Q2311-01  
 Misc :  
 ALS Vial : 7 Sample Multiplier: 1

Instrument :  
 ECD\_S  
 ClientSampleId :

Integration File signal 1: autoint1.e  
 Integration File signal 2: autoint2.e  
 Quant Time: Jun 18 01:44:18 2025  
 Quant Method : Z:\pestpcbsrv\HPCHEM1\ECD\_S\Method\PS061625.M  
 Quant Title : 8080.M  
 QLast Update : Mon Jun 16 11:52:28 2025  
 Response via : Initial Calibration  
 Integrator: ChemStation

Volume Inj. : 1 µl  
 Signal #1 Phase : ZB-MR2 Signal #2 Phase: ZB-MR2  
 Signal #1 Info : 30M x 0.32mm x0.5 Signal #2 Info : 30M x 0.32mm x 0.25µm

Compound	RT#1	RT#2	Resp#1	Resp#2	ng/ml	ng/ml
System Monitoring Compounds						
4) S 2,4-DCAA	7.350	7.769	1450.9E6	345.3E6	385.805	319.791
Target Compounds						
1) T Dalapon	0.000	2.677f	0	1834.2E6	N.D.	651.780
2) T 3,5-DICHL...	6.503	6.725	-18943446	12938783	N.D.	7.998
3) T 4-Nitroph...	7.146	7.328f	18495129	55775323	11.345	32.716 #
5) T DICAMBA	7.555	7.975	1382521	1936728	<MDL	<MDL #
6) T MCPP	7.729	8.060	38230255	3115377	4.020	1.415 #
7) T MCPA	7.907f	8.334	61665223	14863589	5.174	4.636
8) T DICHLORPROP	8.276	8.683	43738695	41005364	11.901	26.760 #
9) T 2,4-D	8.473	9.043	122.5E6	1619972	36.040	<MDL #
10) T Pentachlo...	8.837f	9.557	82159850	72241961	1.589	1.904
11) T 2,4,5-TP ...	9.385	9.909	13561310	142.9E6	<MDL	9.958 #
12) T 2,4,5-T	9.663	10.356	12909116	210.2E6	<MDL	15.244 #
13) T 2,4-DB	10.232	10.923	263.2E6	31057019	106.518	26.174 #
14) T DINOSEB	11.455	11.321	44595653	316.5E6	3.149	28.883 #
15) T Picloram	11.279	12.421	291.3E6	330.0E6	17.446	13.763
16) T DCPA	11.810f	12.357	88354408	15039341	3.401	<MDL #

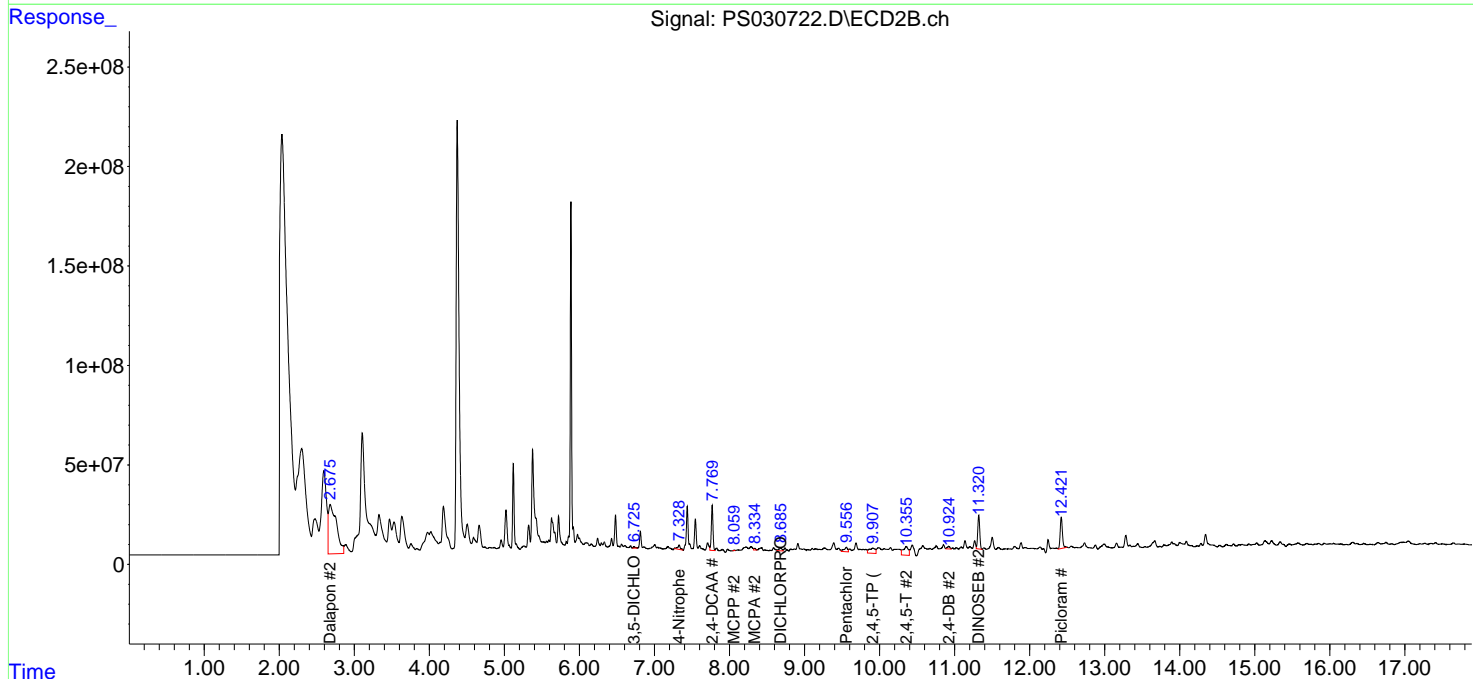
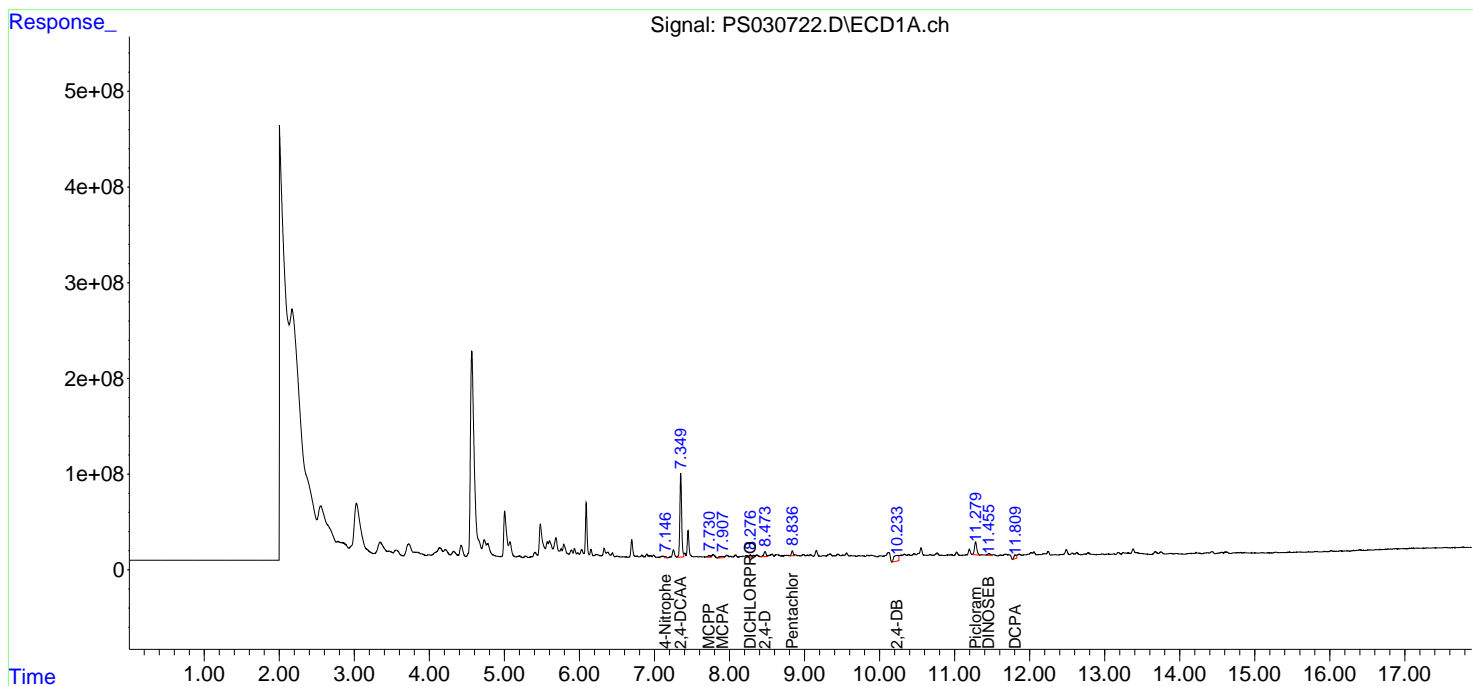
(f)=RT Delta > 1/2 Window (#)=Amounts differ by > 25% (m)=manual int.

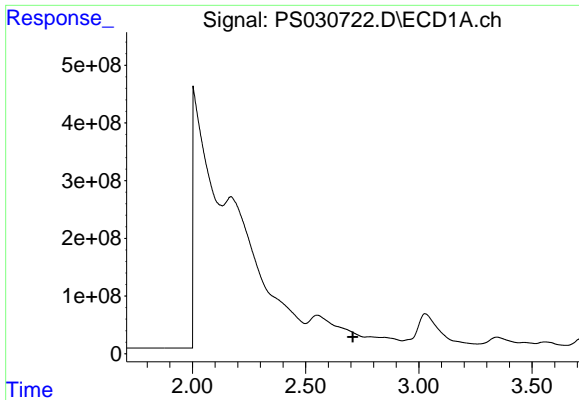
Data Path : Z:\pestpcbsrv\HPCHEM1\ECD\_S\Data\PS061725\  
 Data File : PS030722.D  
 Signal(s) : Signal #1: ECD1A.ch Signal #2: ECD2B.ch  
 Acq On : 17 Jun 2025 18:16  
 Operator : AR\AJ  
 Sample : Q2311-01  
 Misc :  
 ALS Vial : 7 Sample Multiplier: 1

Instrument :  
 ECD\_S  
 ClientSampleId :

Integration File signal 1: autoint1.e  
 Integration File signal 2: autoint2.e  
 Quant Time: Jun 18 01:44:18 2025  
 Quant Method : Z:\pestpcbsrv\HPCHEM1\ECD\_S\Method\PS061625.M  
 Quant Title : 8080.M  
 QLast Update : Mon Jun 16 11:52:28 2025  
 Response via : Initial Calibration  
 Integrator: ChemStation

Volume Inj. : 1 µl  
 Signal #1 Phase : ZB-MR1 Signal #2 Phase: ZB-MR2  
 Signal #1 Info : 30M x 0.32mm x0.5 Signal #2 Info : 30M x 0.32mm x 0.25µm

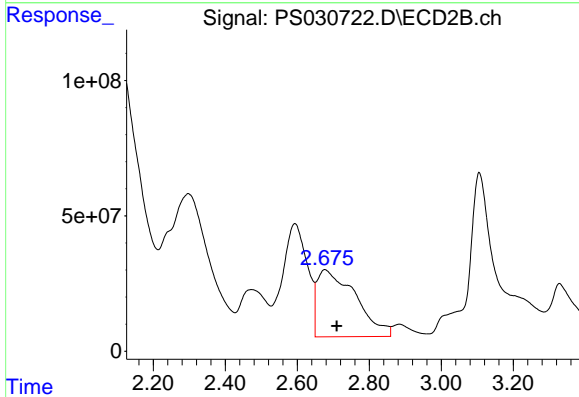




#1 Dalapon

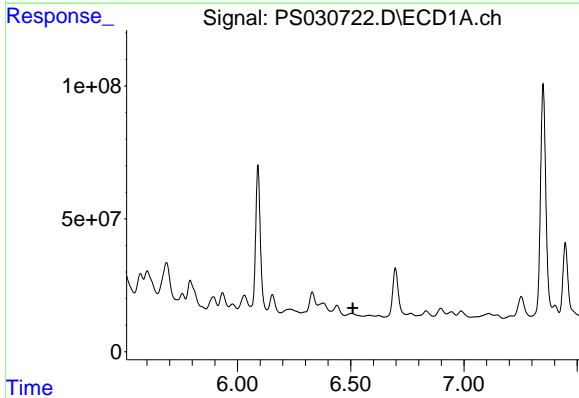
R.T.: 0.000 min  
 Exp R.T.: 2.709 min  
 Response: 0  
 Conc: N.D.

Instrument :  
 ECD\_S  
 ClientSampleId :



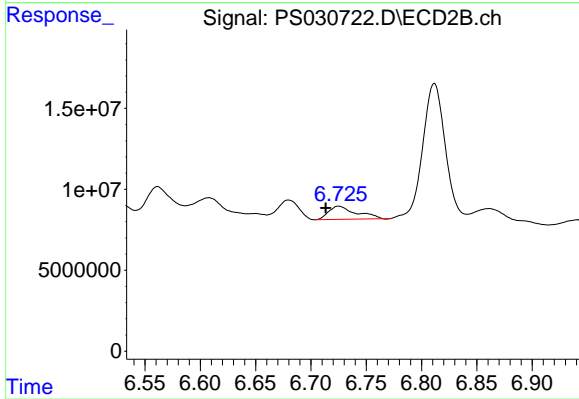
#1 Dalapon

R.T.: 2.677 min  
 Delta R.T.: -0.033 min  
 Response: 1834214009  
 Conc: 651.78 ng/ml



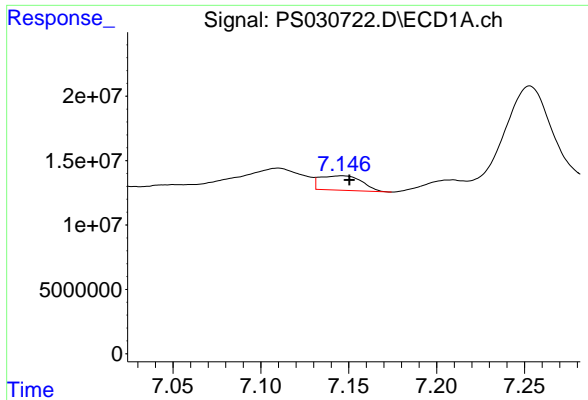
#2 3,5-DICHLOROBENZOIC ACID

R.T.: 6.503 min  
 Delta R.T.: -0.007 min  
 Response: -18943446  
 Conc: N.D.



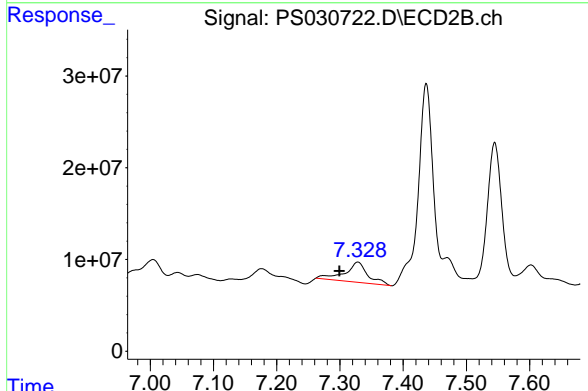
#2 3,5-DICHLOROBENZOIC ACID

R.T.: 6.725 min  
 Delta R.T.: 0.012 min  
 Response: 12938783  
 Conc: 8.00 ng/ml

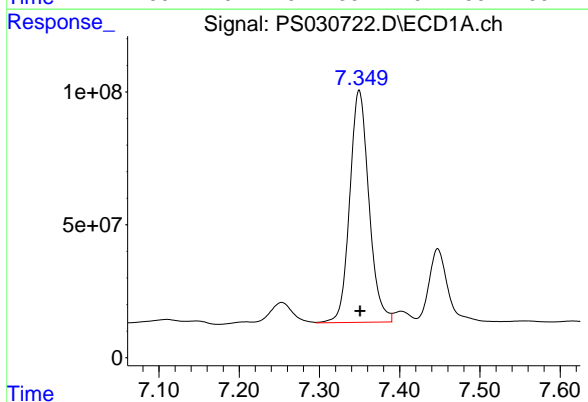


#3 4-Nitrophenol  
 R.T.: 7.146 min  
 Delta R.T.: -0.004 min  
 Response: 18495129  
 Conc: 11.34 ng/ml

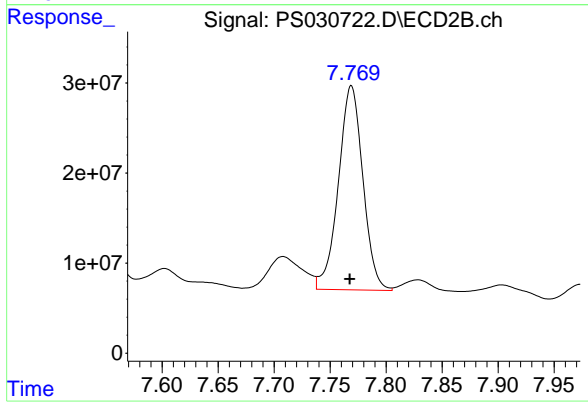
Instrument :  
 ECD\_S  
 ClientSampleId :



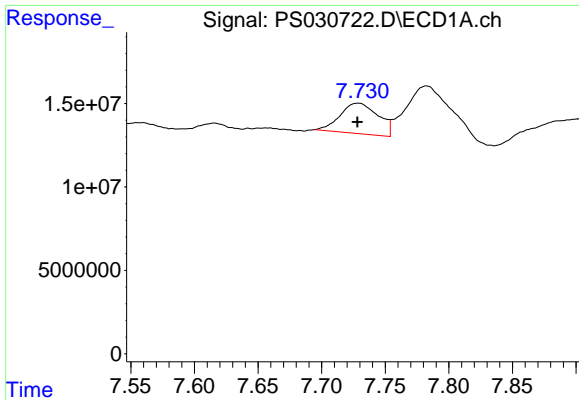
#3 4-Nitrophenol  
 R.T.: 7.328 min  
 Delta R.T.: 0.029 min  
 Response: 55775323  
 Conc: 32.72 ng/ml



#4 2,4-DCAA  
 R.T.: 7.350 min  
 Delta R.T.: -0.001 min  
 Response: 1450942895  
 Conc: 385.81 ng/ml



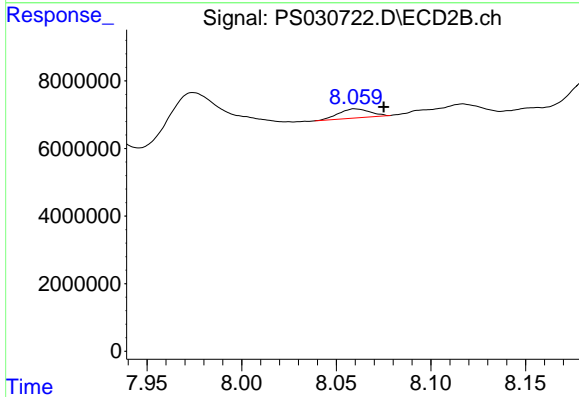
#4 2,4-DCAA  
 R.T.: 7.769 min  
 Delta R.T.: 0.001 min  
 Response: 345275229  
 Conc: 319.79 ng/ml



#6 MCPP

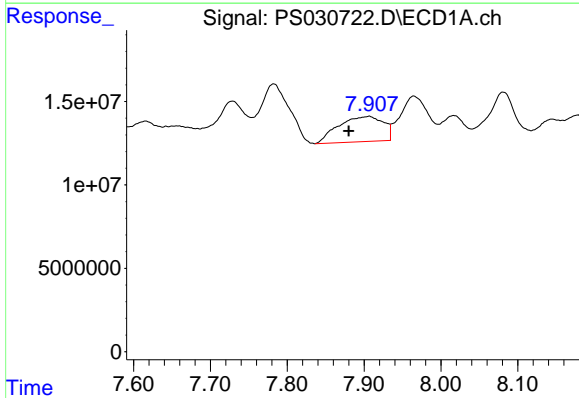
R.T.: 7.729 min  
 Delta R.T.: 0.000 min  
 Response: 38230255  
 Conc: 4.02 ug/ml

Instrument :  
 ECD\_S  
 ClientSampleId :



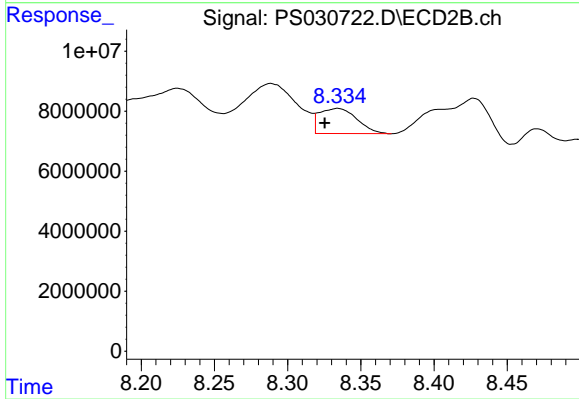
#6 MCPP

R.T.: 8.060 min  
 Delta R.T.: -0.015 min  
 Response: 3115377  
 Conc: 1.42 ug/ml



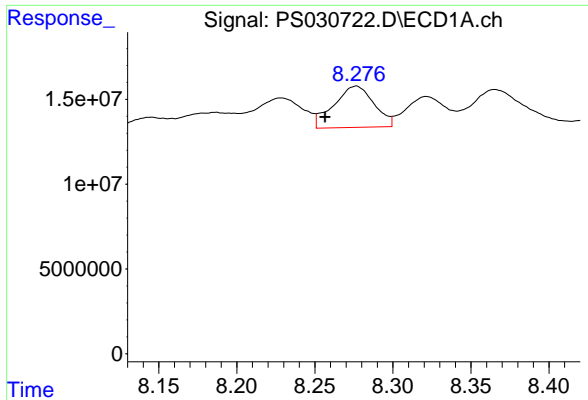
#7 MCPA

R.T.: 7.907 min  
 Delta R.T.: 0.027 min  
 Response: 61665223  
 Conc: 5.17 ug/ml



#7 MCPA

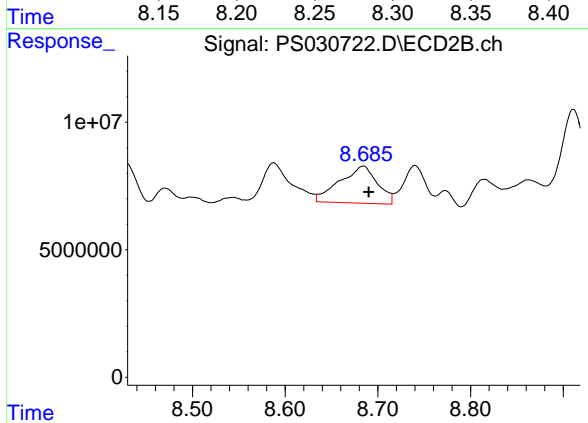
R.T.: 8.334 min  
 Delta R.T.: 0.009 min  
 Response: 14863589  
 Conc: 4.64 ug/ml



#8 DICHLORPROP

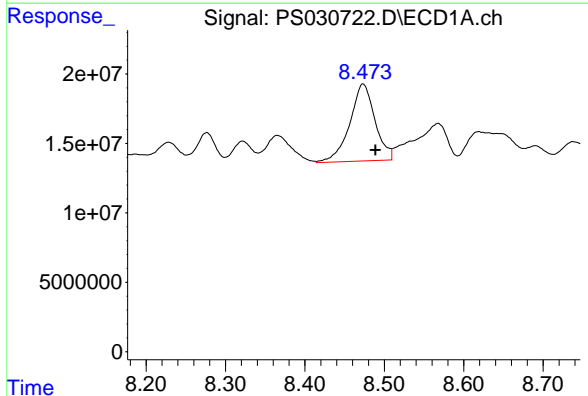
R.T.: 8.276 min  
 Delta R.T.: 0.020 min  
 Response: 43738695  
 Conc: 11.90 ng/ml

Instrument :  
 ECD\_S  
 ClientSampleId :



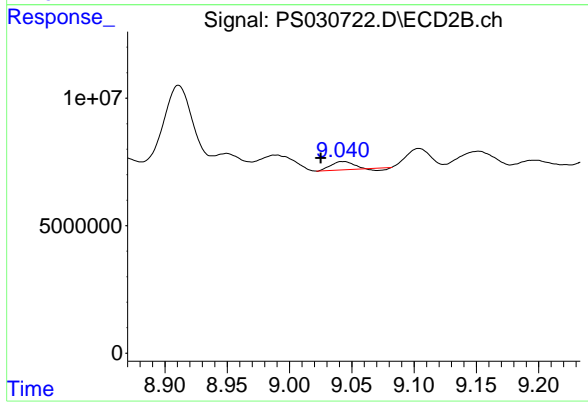
#8 DICHLORPROP

R.T.: 8.683 min  
 Delta R.T.: -0.007 min  
 Response: 41005364  
 Conc: 26.76 ng/ml



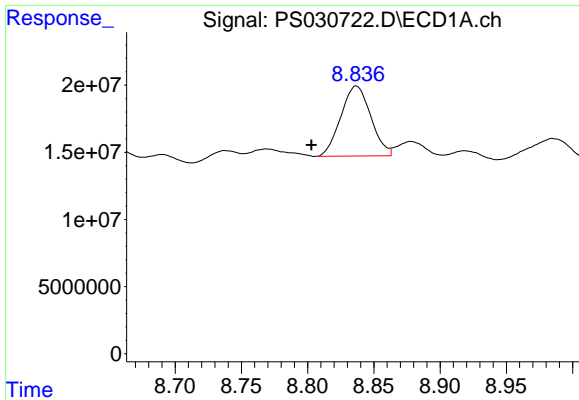
#9 2,4-D

R.T.: 8.473 min  
 Delta R.T.: -0.015 min  
 Response: 122547605  
 Conc: 36.04 ng/ml



#9 2,4-D

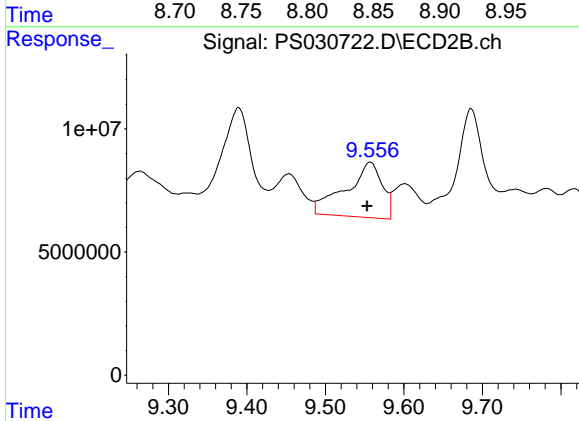
R.T.: 9.043 min  
 Delta R.T.: 0.018 min  
 Response: 1619972  
 Conc: N.D.



#10 Pentachlorophenol

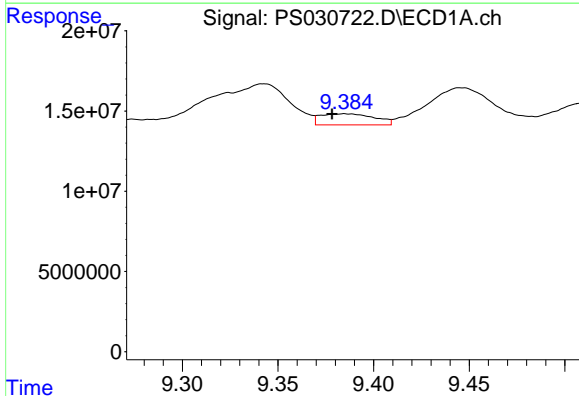
R.T.: 8.837 min  
 Delta R.T.: 0.034 min  
 Response: 82159850  
 Conc: 1.59 ng/ml

Instrument :  
 ECD\_S  
 ClientSampleId :



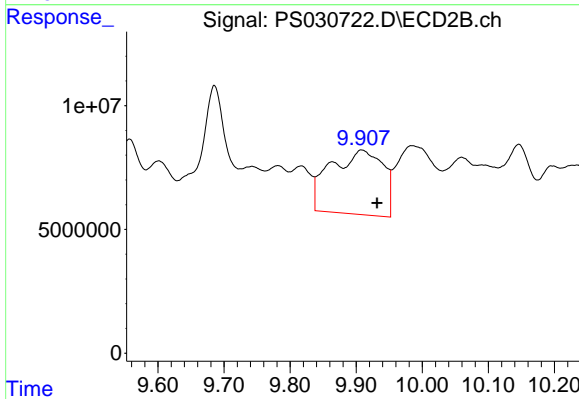
#10 Pentachlorophenol

R.T.: 9.557 min  
 Delta R.T.: 0.004 min  
 Response: 72241961  
 Conc: 1.90 ng/ml



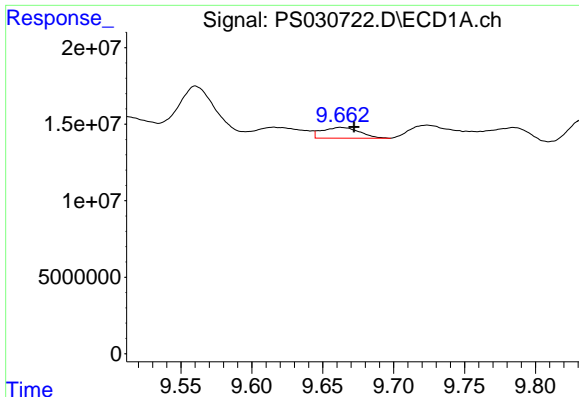
#11 2,4,5-TP (SILVEX)

R.T.: 9.385 min  
 Delta R.T.: 0.007 min  
 Response: 13561310  
 Conc: N.D.



#11 2,4,5-TP (SILVEX)

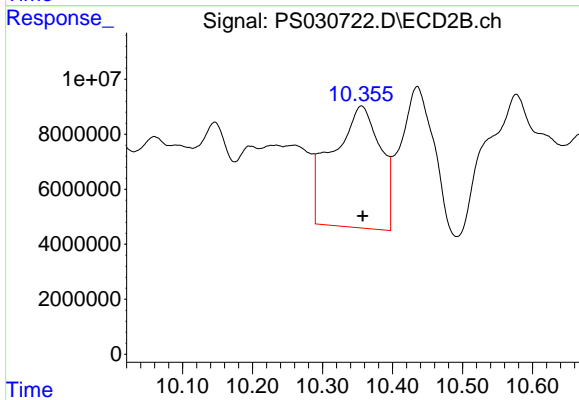
R.T.: 9.909 min  
 Delta R.T.: -0.022 min  
 Response: 142937364  
 Conc: 9.96 ng/ml



#12 2,4,5-T

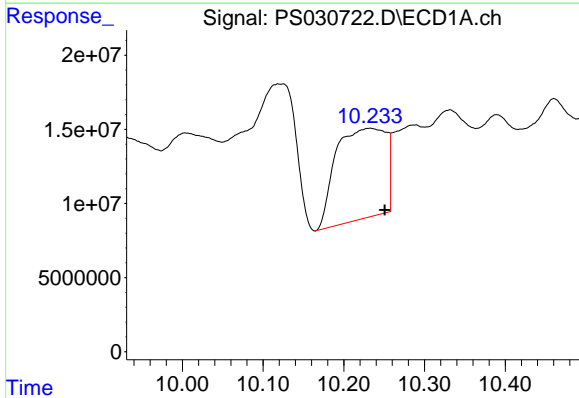
R.T.: 9.663 min  
 Delta R.T.: -0.009 min  
 Response: 12909116  
 Conc: N.D.

Instrument :  
 ECD\_S  
 ClientSampleId :



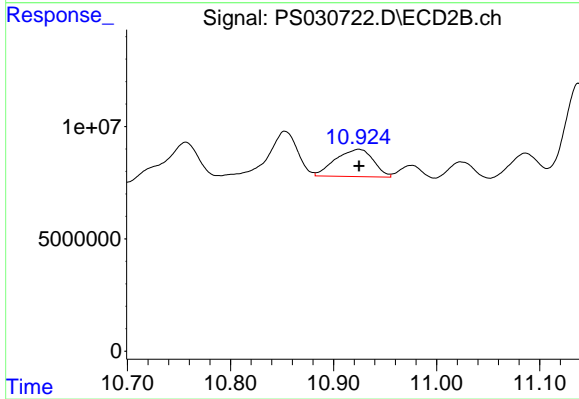
#12 2,4,5-T

R.T.: 10.356 min  
 Delta R.T.: -0.002 min  
 Response: 210190142  
 Conc: 15.24 ng/ml



#13 2,4-DB

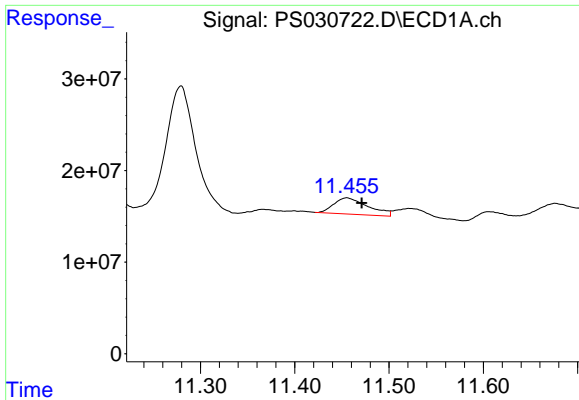
R.T.: 10.232 min  
 Delta R.T.: -0.019 min  
 Response: 263222415  
 Conc: 106.52 ng/ml



#13 2,4-DB

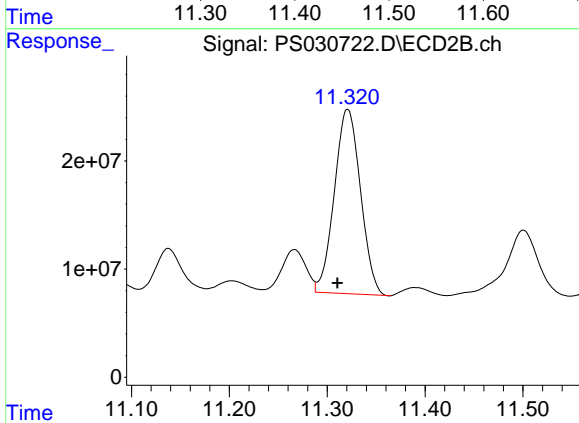
R.T.: 10.923 min  
 Delta R.T.: -0.001 min  
 Response: 31057019  
 Conc: 26.17 ng/ml



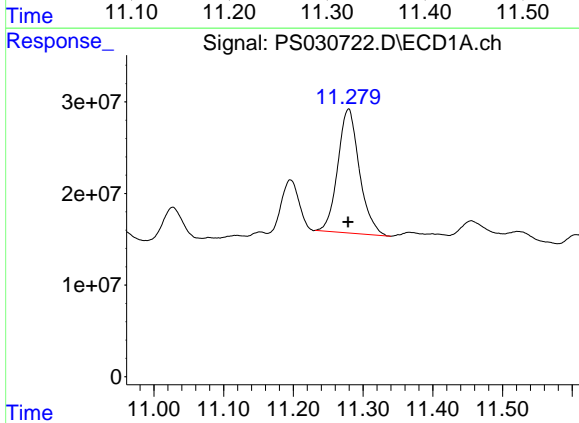


#14 DINOSEB  
 R.T.: 11.455 min  
 Delta R.T.: -0.016 min  
 Response: 44595653  
 Conc: 3.15 ng/ml

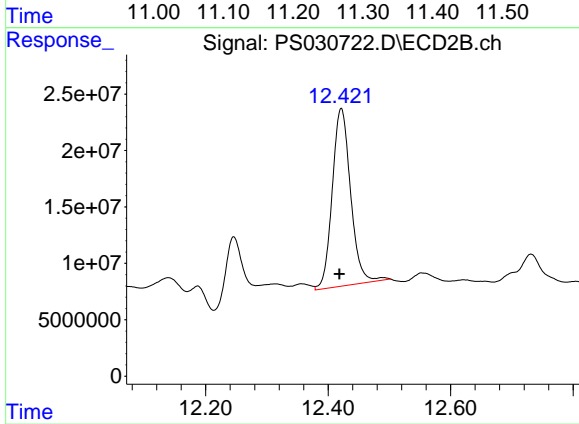
Instrument :  
 ECD\_S  
 ClientSampleId :



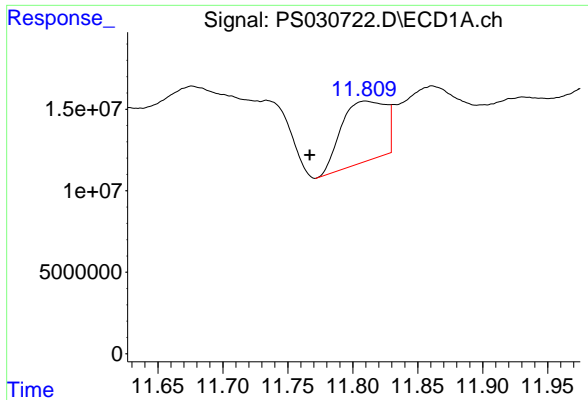
#14 DINOSEB  
 R.T.: 11.321 min  
 Delta R.T.: 0.010 min  
 Response: 316478867  
 Conc: 28.88 ng/ml



#15 Picloram  
 R.T.: 11.279 min  
 Delta R.T.: 0.000 min  
 Response: 291273959  
 Conc: 17.45 ng/ml



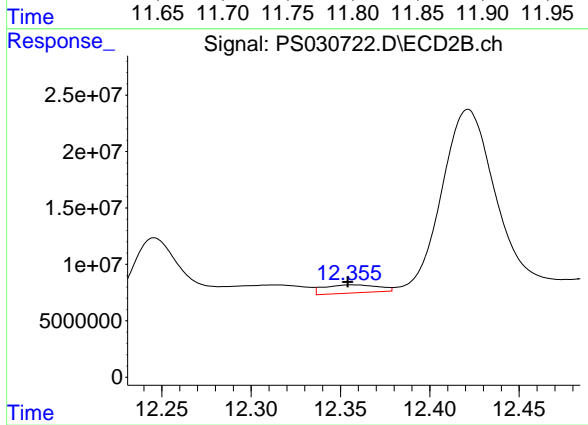
#15 Picloram  
 R.T.: 12.421 min  
 Delta R.T.: 0.003 min  
 Response: 329977266  
 Conc: 13.76 ng/ml



#16 DCPA

R.T.: 11.810 min  
 Delta R.T.: 0.043 min  
 Response: 88354408  
 Conc: 3.40 ng/ml

Instrument :  
 ECD\_S  
 ClientSampleId :



#16 DCPA

R.T.: 12.357 min  
 Delta R.T.: 0.003 min  
 Response: 15039341  
 Conc: N.D.