

Data Path : Z:\pestpcbsrv\HPCHEM1\ECD_S\Data\PS061725\
 Data File : PS030728.D
 Signal(s) : Signal #1: ECD1A.ch Signal #2: ECD2B.ch
 Acq On : 17 Jun 2025 20:40
 Operator : AR\AJ
 Sample : HSTDCCC750
 Misc :
 ALS Vial : 3 Sample Multiplier: 1

Instrument :
 ECD_S
 ClientSampleId :

Integration File signal 1: autoint1.e
 Integration File signal 2: autoint2.e
 Quant Time: Jun 18 01:45:27 2025
 Quant Method : Z:\pestpcbsrv\HPCHEM1\ECD_S\Method\PS061625.M
 Quant Title : 8080.M
 QLast Update : Mon Jun 16 11:52:28 2025
 Response via : Initial Calibration
 Integrator: ChemStation

Volume Inj. : 1 µl
 Signal #1 Phase : ZB-MR2 Signal #2 Phase: ZB-MR2
 Signal #1 Info : 30M x 0.32mm x0.5 Signal #2 Info : 30M x 0.32mm x 0.25µm

Compound	RT#1	RT#2	Resp#1	Resp#2	ng/ml	ng/ml

System Monitoring Compounds						
4) S 2,4-DCAA	7.350	7.769	2612.9E6	740.0E6	694.770	685.376
Target Compounds						
1) T Dalapon	2.708	2.710	3876.7E6	1729.1E6	619.796	614.437
2) T 3,5-DICHL...	6.509	6.715	3585.0E6	1054.9E6	659.373	652.102
3) T 4-Nitroph...	7.150	7.301	1152.0E6	1116.6E6	706.618	654.965
5) T DICAMBA	7.541	7.972	10485.6E6	4349.0E6	670.196	655.905
6) T MCPP	7.722	8.071	662.3E6	147.4E6	69.631	66.952
7) T MCPA	7.873	8.320	821.0E6	209.1E6	68.890	65.224
8) T DICHLORPROP	8.255	8.691	2424.8E6	982.2E6	659.764	640.944
9) T 2,4-D	8.487	9.026	2452.6E6	1082.5E6	721.266	645.730
10) T Pentachlo...	8.796	9.552	37646.7E6	26001.5E6	728.312	685.405
11) T 2,4,5-TP ...	9.376	9.932	14380.6E6	9591.5E6	718.785	668.186
12) T 2,4,5-T	9.671	10.358	13006.8E6	9271.6E6	782.221	672.410
13) T 2,4-DB	10.249	10.926	2059.5E6	791.4E6	833.413	666.975
14) T DINOSEB	11.469	11.311	10016.4E6	7147.2E6	707.307	652.275
15) T Picloram	11.278	12.420	13357.6E6	15891.1E6	800.039	662.796
16) T DCPA	11.765	12.357	18931.3E6	13648.4E6	728.821	635.532

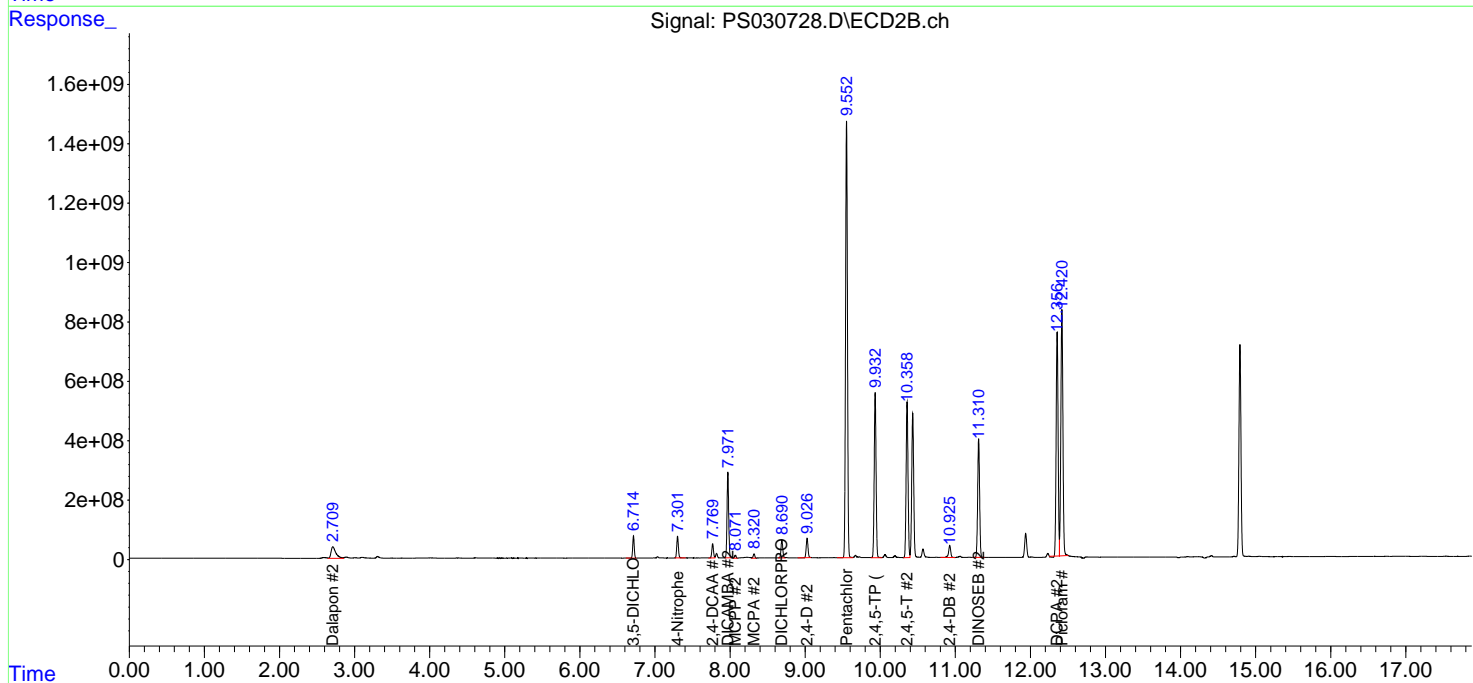
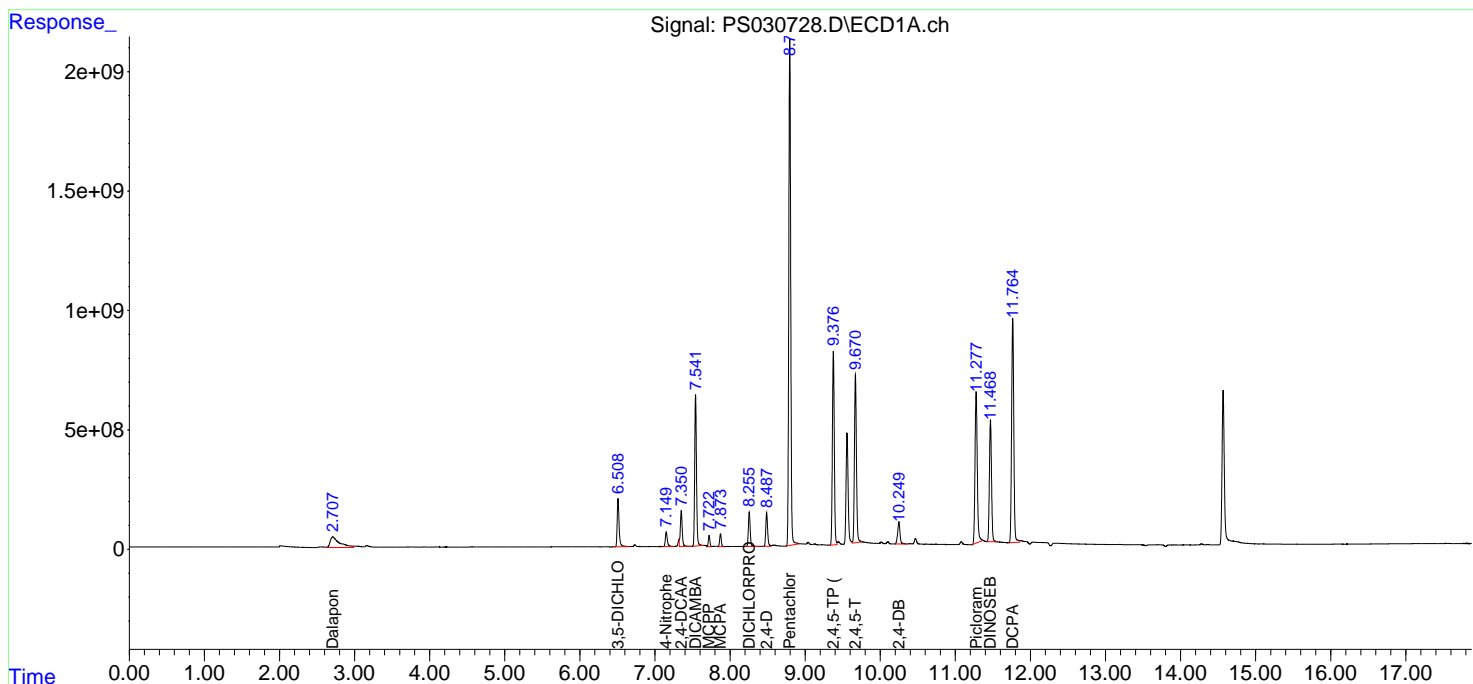
(f)=RT Delta > 1/2 Window (#)=Amounts differ by > 25% (m)=manual int.

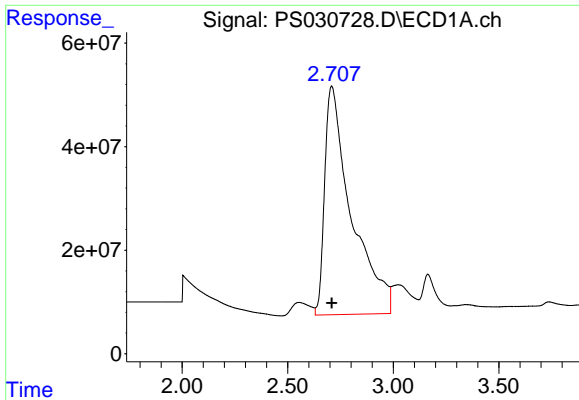
Data Path : Z:\pestpcbsrv\HPCHEM1\ECD_S\Data\PS061725\
 Data File : PS030728.D
 Signal(s) : Signal #1: ECD1A.ch Signal #2: ECD2B.ch
 Acq On : 17 Jun 2025 20:40
 Operator : AR\AJ
 Sample : HSTDCCC750
 Misc :
 ALS Vial : 3 Sample Multiplier: 1

Instrument :
 ECD_S
 ClientSampleId :

Integration File signal 1: autoint1.e
 Integration File signal 2: autoint2.e
 Quant Time: Jun 18 01:45:27 2025
 Quant Method : Z:\pestpcbsrv\HPCHEM1\ECD_S\Method\PS061625.M
 Quant Title : 8080.M
 QLast Update : Mon Jun 16 11:52:28 2025
 Response via : Initial Calibration
 Integrator: ChemStation

Volume Inj. : 1 µl
 Signal #1 Phase : ZB-MR1 Signal #2 Phase: ZB-MR2
 Signal #1 Info : 30M x 0.32mm x0.5 Signal #2 Info : 30M x 0.32mm x 0.25µm

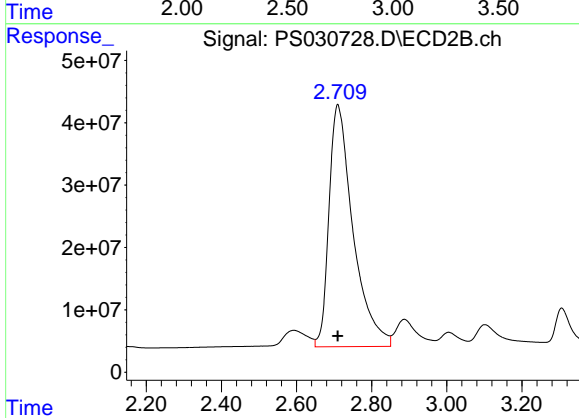




#1 Dalapon

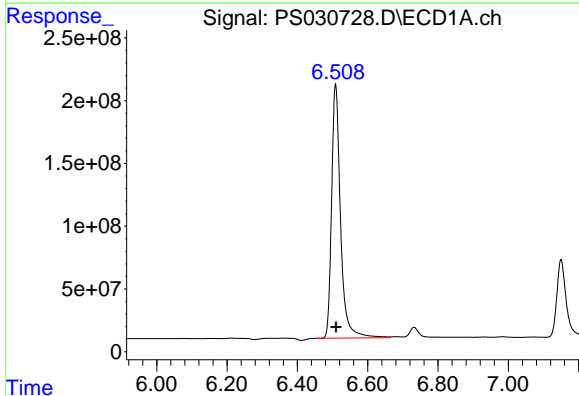
R.T.: 2.708 min
 Delta R.T.: -0.001 min
 Response: 3876668558
 Conc: 619.80 ng/ml

Instrument :
 ECD_S
 ClientSampleId :



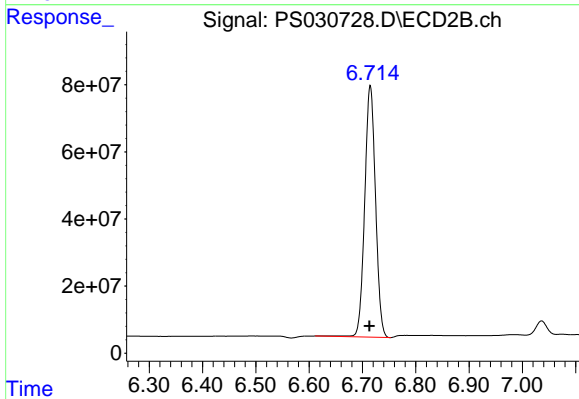
#1 Dalapon

R.T.: 2.710 min
 Delta R.T.: 0.000 min
 Response: 1729124291
 Conc: 614.44 ng/ml



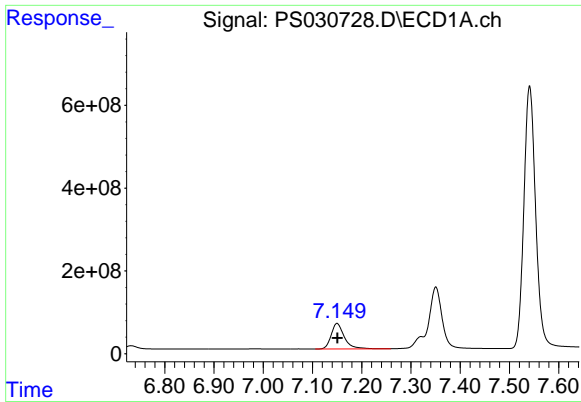
#2 3,5-DICHLOROBENZOIC ACID

R.T.: 6.509 min
 Delta R.T.: -0.001 min
 Response: 3585049078
 Conc: 659.37 ng/ml



#2 3,5-DICHLOROBENZOIC ACID

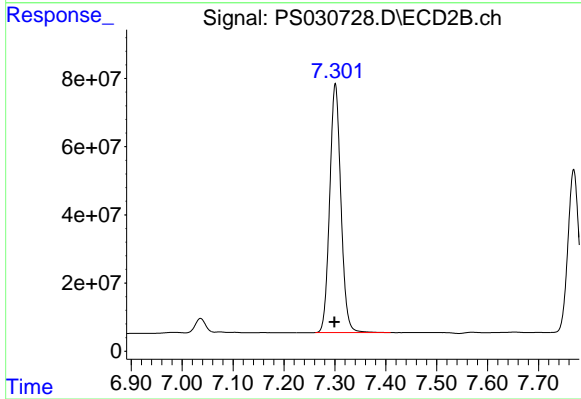
R.T.: 6.715 min
 Delta R.T.: 0.001 min
 Response: 1054893227
 Conc: 652.10 ng/ml



#3 4-Nitrophenol

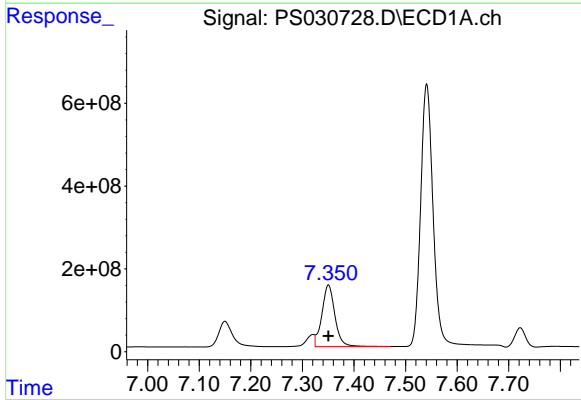
R.T.: 7.150 min
 Delta R.T.: 0.000 min
 Response: 1151963600
 Conc: 706.62 ng/ml

Instrument :
 ECD_S
 ClientSampleId :



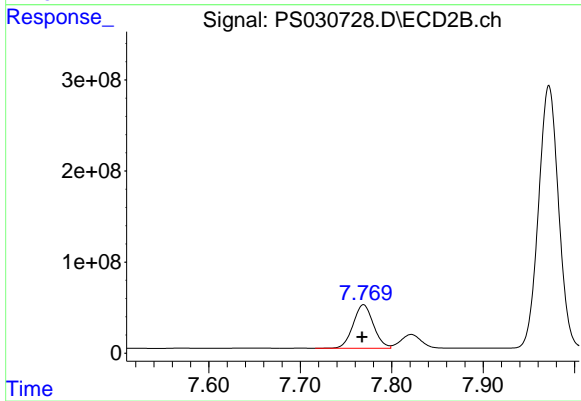
#3 4-Nitrophenol

R.T.: 7.301 min
 Delta R.T.: 0.002 min
 Response: 1116614883
 Conc: 654.96 ng/ml



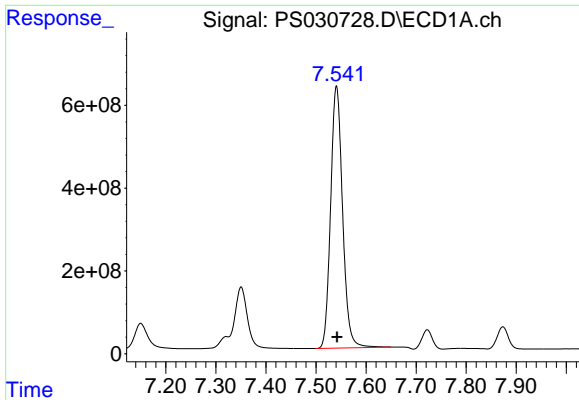
#4 2,4-DCAA

R.T.: 7.350 min
 Delta R.T.: 0.000 min
 Response: 2612899790
 Conc: 694.77 ng/ml



#4 2,4-DCAA

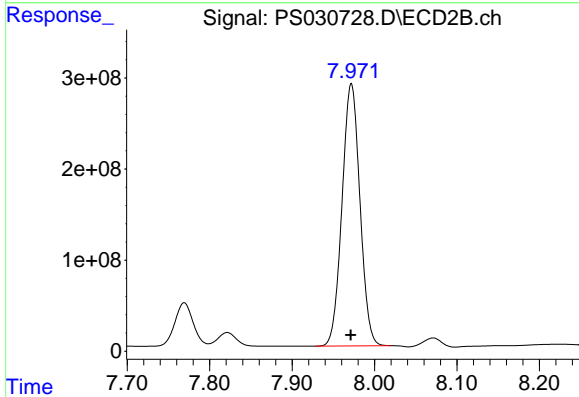
R.T.: 7.769 min
 Delta R.T.: 0.001 min
 Response: 739994054
 Conc: 685.38 ng/ml



#5 DICAMBA

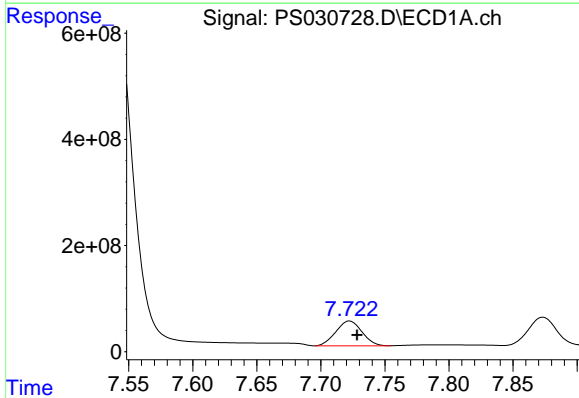
R.T.: 7.541 min
 Delta R.T.: -0.001 min
 Response: 10485597279
 Conc: 670.20 ng/ml

Instrument :
 ECD_S
 ClientSampleId :



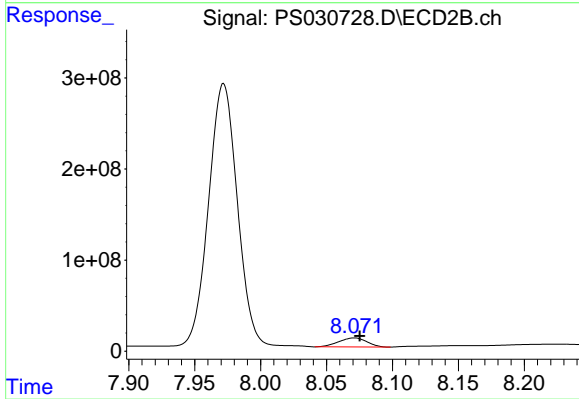
#5 DICAMBA

R.T.: 7.972 min
 Delta R.T.: 0.000 min
 Response: 4348984768
 Conc: 655.90 ng/ml



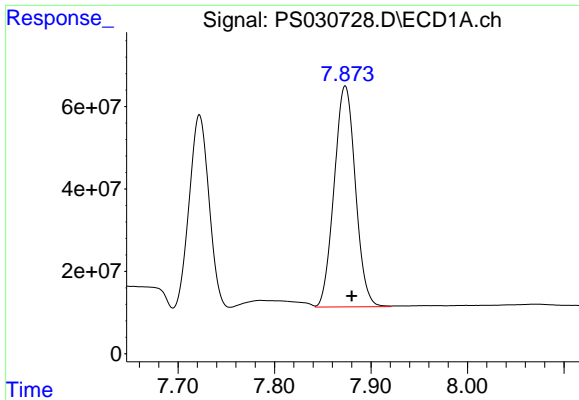
#6 MCP

R.T.: 7.722 min
 Delta R.T.: -0.006 min
 Response: 662252289
 Conc: 69.63 ug/ml



#6 MCP

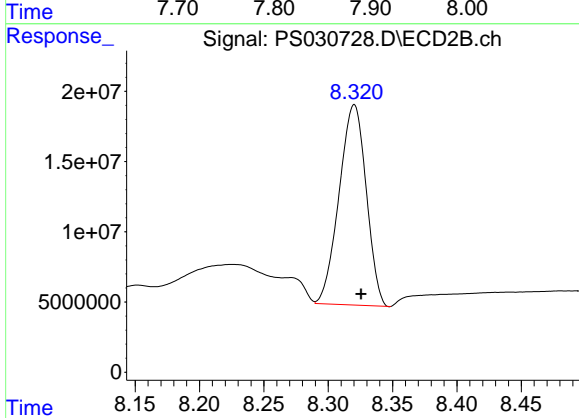
R.T.: 8.071 min
 Delta R.T.: -0.004 min
 Response: 147386502
 Conc: 66.95 ug/ml



#7 MCPA

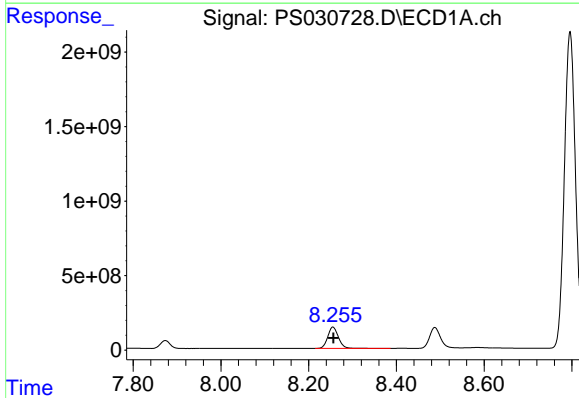
R.T.: 7.873 min
 Delta R.T.: -0.007 min
 Response: 820972144
 Conc: 68.89 ug/ml

Instrument :
 ECD_S
 ClientSampleId :



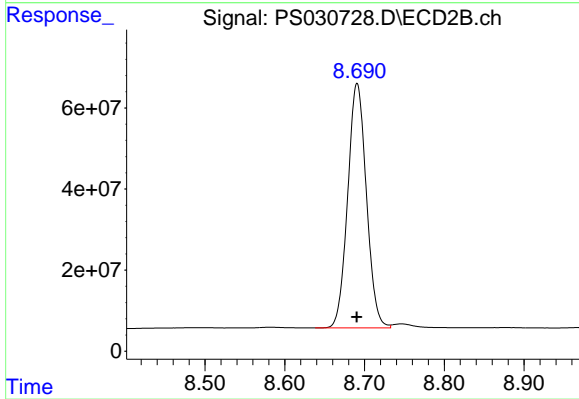
#7 MCPA

R.T.: 8.320 min
 Delta R.T.: -0.005 min
 Response: 209113201
 Conc: 65.22 ug/ml



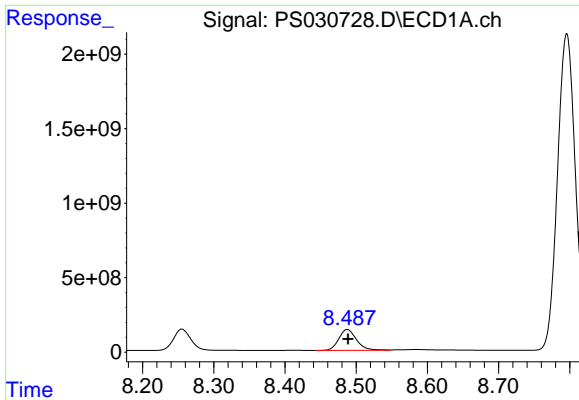
#8 DICHLORPROP

R.T.: 8.255 min
 Delta R.T.: -0.001 min
 Response: 2424813977
 Conc: 659.76 ng/ml



#8 DICHLORPROP

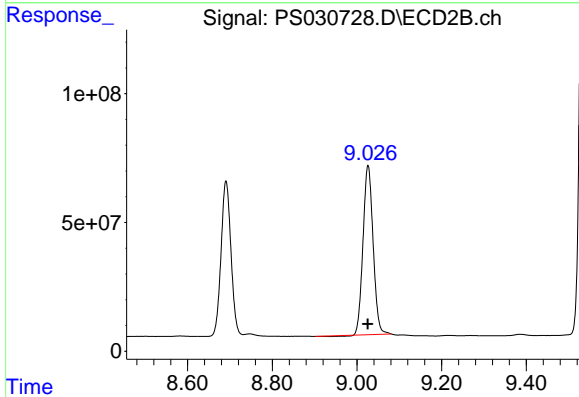
R.T.: 8.691 min
 Delta R.T.: 0.000 min
 Response: 982161699
 Conc: 640.94 ng/ml



#9 2,4-D

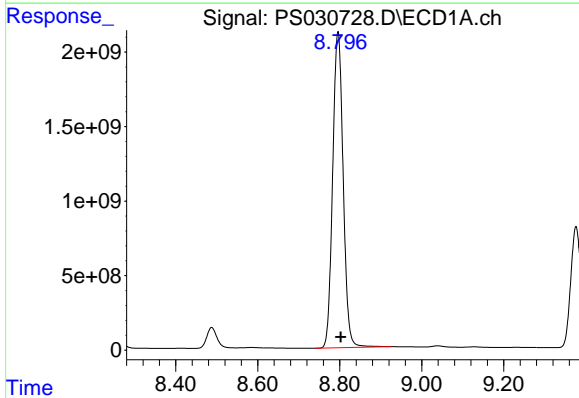
R.T.: 8.487 min
 Delta R.T.: -0.001 min
 Response: 2452566000
 Conc: 721.27 ng/ml

Instrument :
 ECD_S
 ClientSampleId :



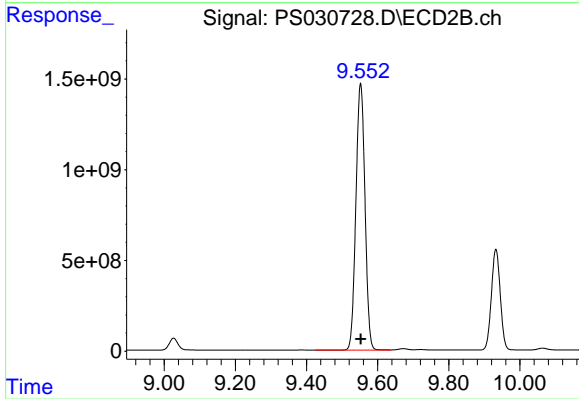
#9 2,4-D

R.T.: 9.026 min
 Delta R.T.: 0.001 min
 Response: 1082530433
 Conc: 645.73 ng/ml



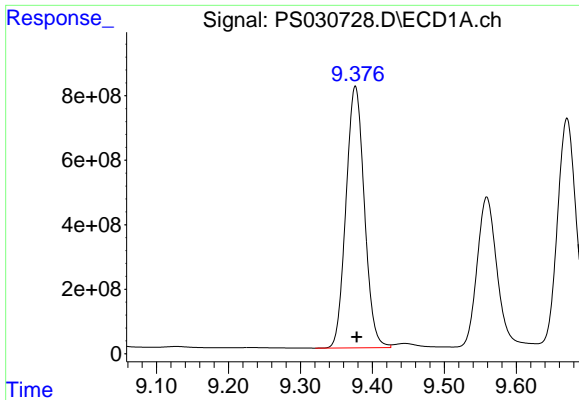
#10 Pentachlorophenol

R.T.: 8.796 min
 Delta R.T.: -0.007 min
 Response: 37646686167
 Conc: 728.31 ng/ml



#10 Pentachlorophenol

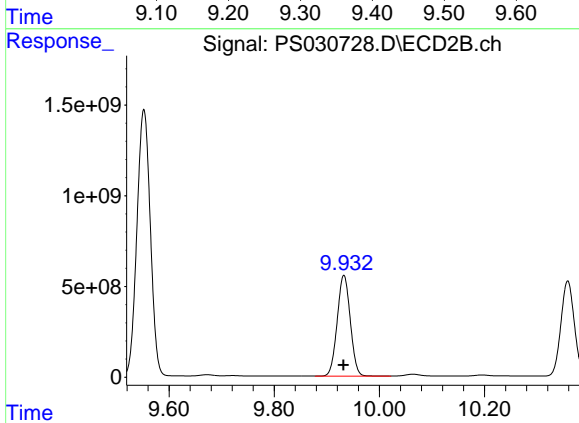
R.T.: 9.552 min
 Delta R.T.: 0.000 min
 Response: 26001501987
 Conc: 685.41 ng/ml



#11 2,4,5-TP (SILVEX)

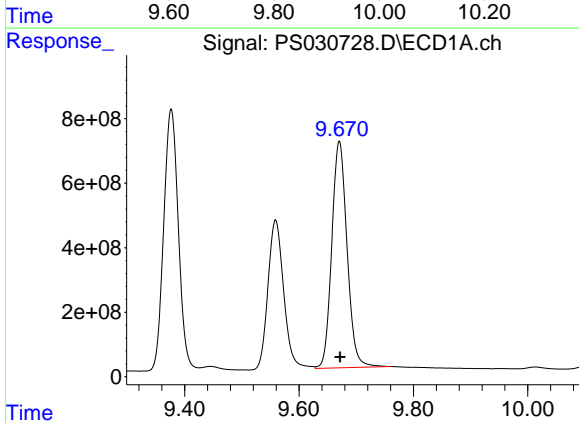
R.T.: 9.376 min
 Delta R.T.: -0.002 min
 Response: 14380598313
 Conc: 718.78 ng/ml

Instrument :
 ECD_S
 ClientSampleId :



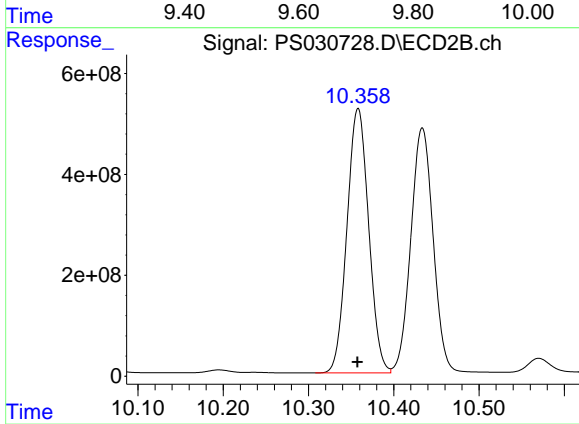
#11 2,4,5-TP (SILVEX)

R.T.: 9.932 min
 Delta R.T.: 0.000 min
 Response: 9591539902
 Conc: 668.19 ng/ml



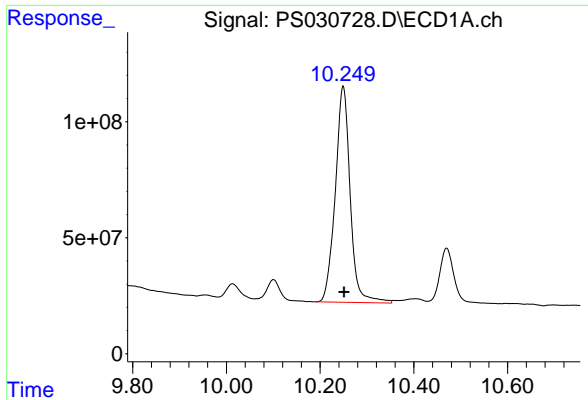
#12 2,4,5-T

R.T.: 9.671 min
 Delta R.T.: -0.002 min
 Response: 13006809434
 Conc: 782.22 ng/ml



#12 2,4,5-T

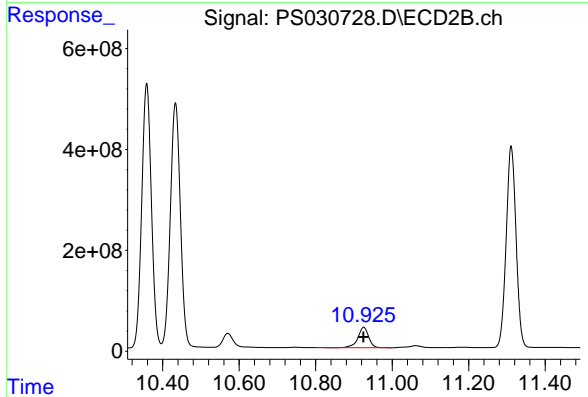
R.T.: 10.358 min
 Delta R.T.: 0.000 min
 Response: 9271555516
 Conc: 672.41 ng/ml



#13 2,4-DB

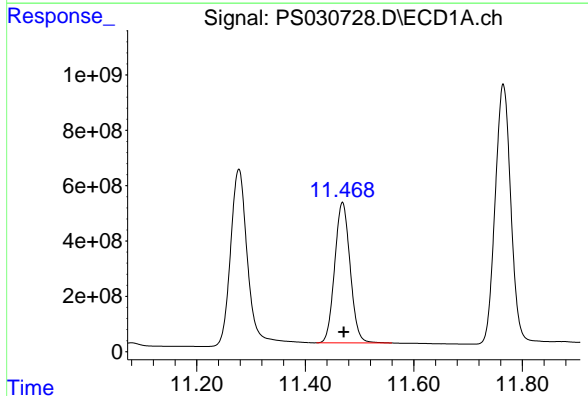
R.T.: 10.249 min
 Delta R.T.: -0.002 min
 Response: 2059494746
 Conc: 833.41 ng/ml

Instrument :
 ECD_S
 ClientSampleId :



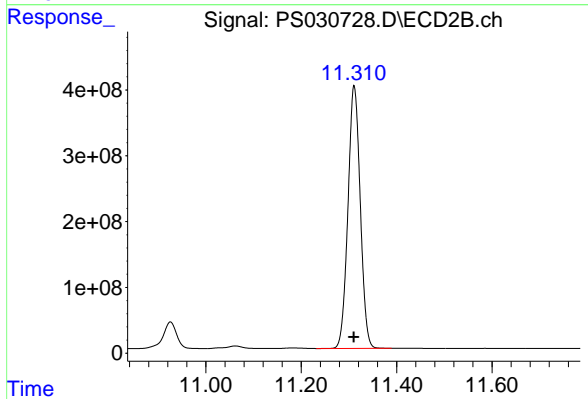
#13 2,4-DB

R.T.: 10.926 min
 Delta R.T.: 0.000 min
 Response: 791403222
 Conc: 666.98 ng/ml



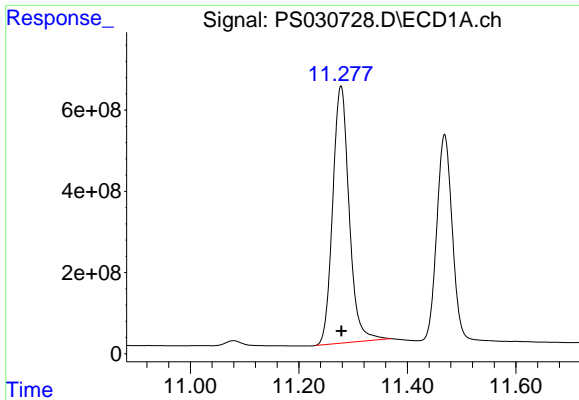
#14 DINOSEB

R.T.: 11.469 min
 Delta R.T.: -0.003 min
 Response: 10016440784
 Conc: 707.31 ng/ml



#14 DINOSEB

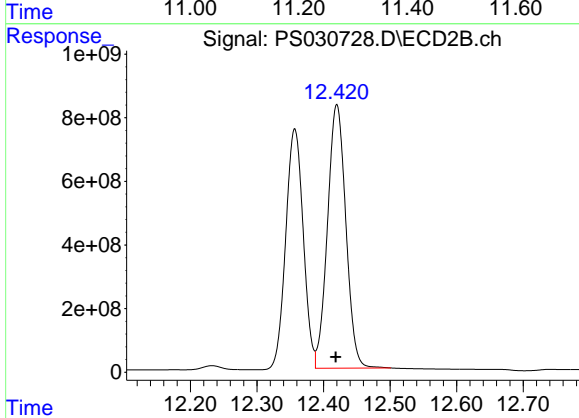
R.T.: 11.311 min
 Delta R.T.: 0.000 min
 Response: 7147228766
 Conc: 652.27 ng/ml



#15 Picloram

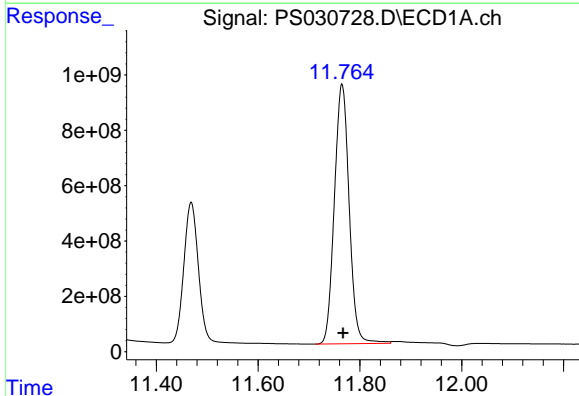
R.T.: 11.278 min
 Delta R.T.: 0.000 min
 Response: 13357616699
 Conc: 800.04 ng/ml

Instrument :
 ECD_S
 ClientSampleId :



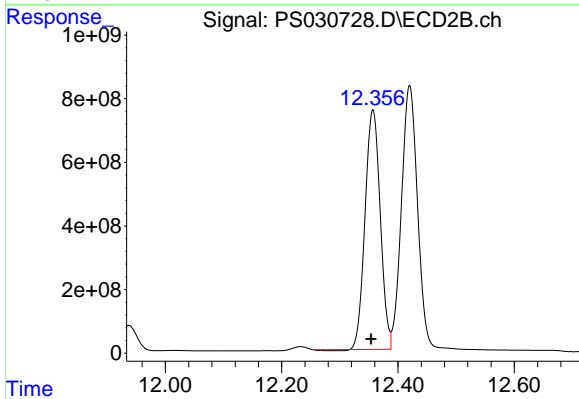
#15 Picloram

R.T.: 12.420 min
 Delta R.T.: 0.002 min
 Response: 15891101713
 Conc: 662.80 ng/ml



#16 DCPA

R.T.: 11.765 min
 Delta R.T.: -0.002 min
 Response: 18931254581
 Conc: 728.82 ng/ml



#16 DCPA

R.T.: 12.357 min
 Delta R.T.: 0.003 min
 Response: 13648411511
 Conc: 635.53 ng/ml