

Data Path : Z:\pestpcbsrv\HPCHEM1\ECD_S\Data\PS061725\
 Data File : PS030729.D
 Signal(s) : Signal #1: ECD1A.ch Signal #2: ECD2B.ch
 Acq On : 17 Jun 2025 21:28
 Operator : AR\AJ
 Sample : Q2319-01
 Misc :
 ALS Vial : 12 Sample Multiplier: 1

Instrument :
 ECD_S
 ClientSampleId :

Integration File signal 1: autoint1.e
 Integration File signal 2: autoint2.e
 Quant Time: Jun 18 01:45:50 2025
 Quant Method : Z:\pestpcbsrv\HPCHEM1\ECD_S\Method\PS061625.M
 Quant Title : 8080.M
 QLast Update : Mon Jun 16 11:52:28 2025
 Response via : Initial Calibration
 Integrator: ChemStation

Volume Inj. : 1 µl
 Signal #1 Phase : ZB-MR2 Signal #2 Phase: ZB-MR2
 Signal #1 Info : 30M x 0.32mm x0.5 Signal #2 Info : 30M x 0.32mm x 0.25µm

Compound	RT#1	RT#2	Resp#1	Resp#2	ng/ml	ng/ml
System Monitoring Compounds						
4) S 2,4-DCAA	7.349	7.770	1380.1E6	354.0E6	366.971	327.882
Target Compounds						
1) T Dalapon	0.000	2.748f	0	1069.3E6	N.D.	379.976
2) T 3,5-DICHL...	6.503	6.727	-9208197	6293002	N.D.	3.890
3) T 4-Nitroph...	7.118f	7.329f	74275868	27393431	45.561	16.068 #
5) T DICAMBA	7.557	7.972	40341982	8446978	2.578	1.274 #
6) T MCPP	7.732	8.074	35043700	20073138	3.685	9.118 #
7) T MCPA	7.904	8.329	80441268	68319969	6.750	21.309 #
8) T DICHLORPROP	8.225f	8.662f	29616748	26680477	8.058	17.411 #
9) T 2,4-D	8.473	8.984f	2101.9E6	-478168561	618.153	N.D. #
10) T Pentachlo...	8.781	9.529	225.6E6	254.4E6	4.364	6.706 #
11) T 2,4,5-TP ...	9.392	9.946	46160891	405.9E6	2.307	28.276 #
12) T 2,4,5-T	9.712f	10.331f	15895803	304.1E6	<MDL	22.057 #
13) T 2,4-DB	10.231	10.959f	440.4E6	7942930	178.216	6.694 #
14) T DINOSEB	11.444f	11.320	23923990	378.9E6	1.689	34.580 #
15) T Picloram	11.277	12.420	301.5E6	271.4E6	18.057	11.321 #
16) T DCPA	0.000	12.358	0	193.9E6	N.D.	9.028

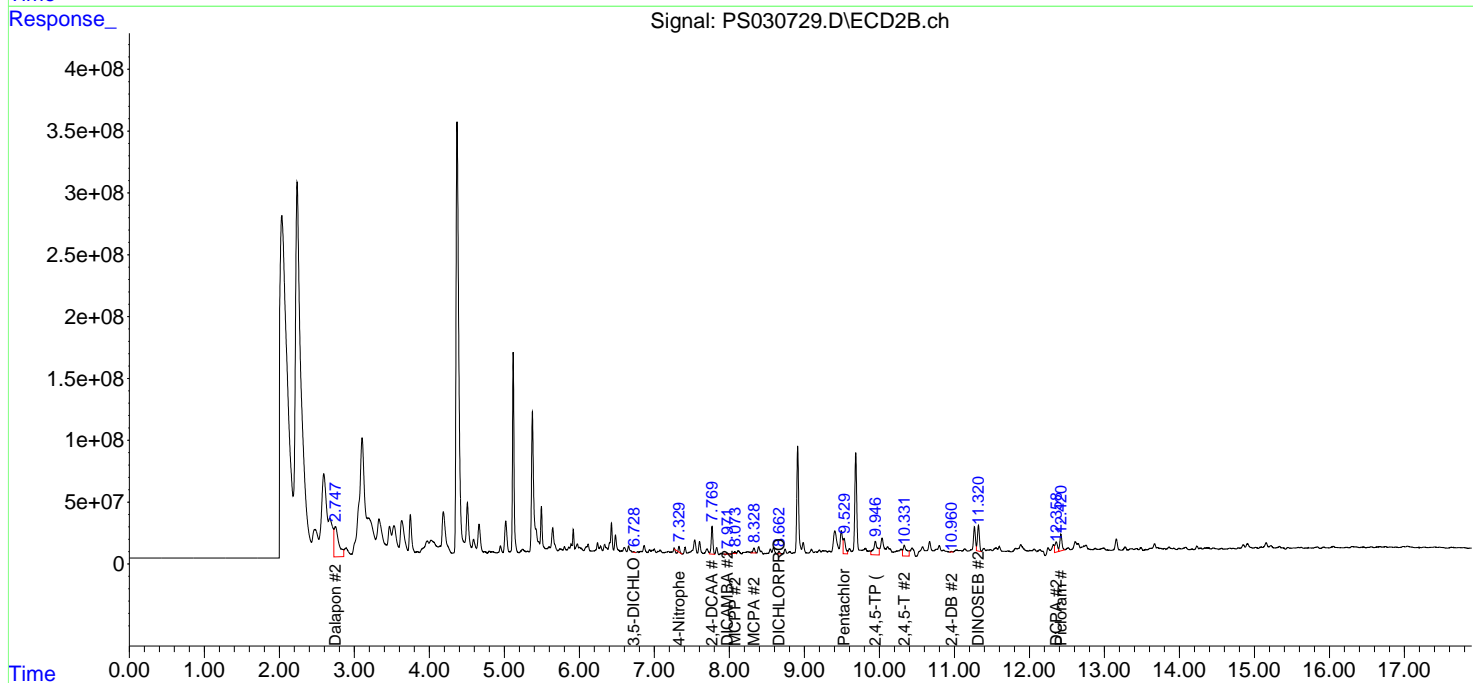
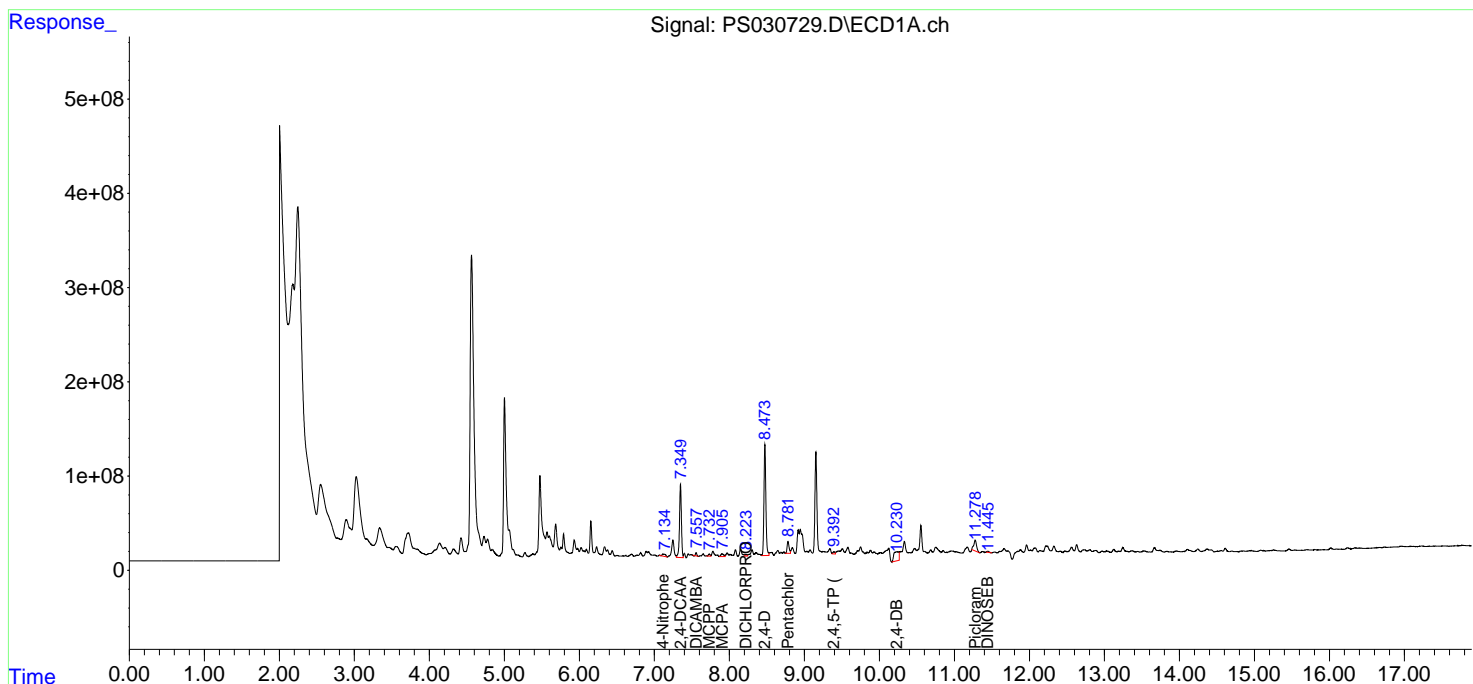
(f)=RT Delta > 1/2 Window (#)=Amounts differ by > 25% (m)=manual int.

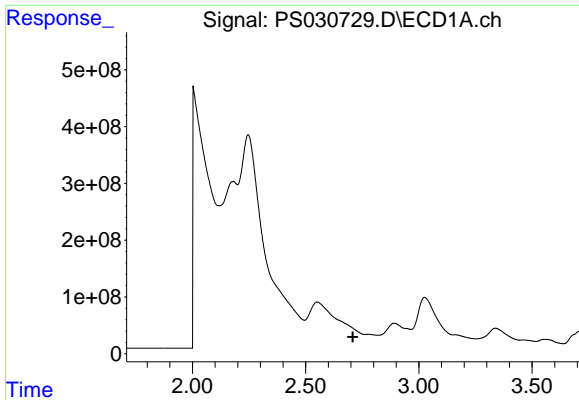
Data Path : Z:\pestpcbsrv\HPCHEM1\ECD_S\Data\PS061725\
 Data File : PS030729.D
 Signal(s) : Signal #1: ECD1A.ch Signal #2: ECD2B.ch
 Acq On : 17 Jun 2025 21:28
 Operator : AR\AJ
 Sample : Q2319-01
 Misc :
 ALS Vial : 12 Sample Multiplier: 1

Instrument :
 ECD_S
 ClientSampleId :

Integration File signal 1: autoint1.e
 Integration File signal 2: autoint2.e
 Quant Time: Jun 18 01:45:50 2025
 Quant Method : Z:\pestpcbsrv\HPCHEM1\ECD_S\Method\PS061625.M
 Quant Title : 8080.M
 QLast Update : Mon Jun 16 11:52:28 2025
 Response via : Initial Calibration
 Integrator: ChemStation

Volume Inj. : 1 µl
 Signal #1 Phase : ZB-MR1 Signal #2 Phase: ZB-MR2
 Signal #1 Info : 30M x 0.32mm x0.5 Signal #2 Info : 30M x 0.32mm x 0.25µm

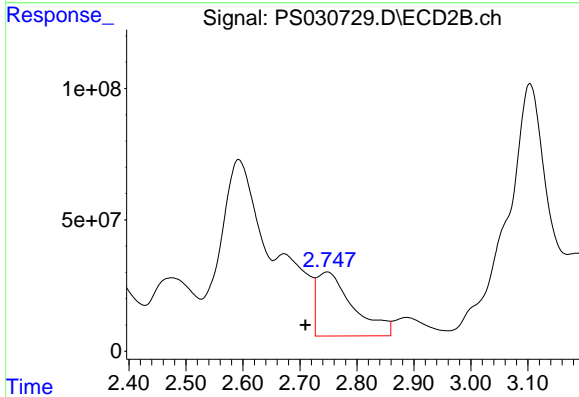




#1 Dalapon

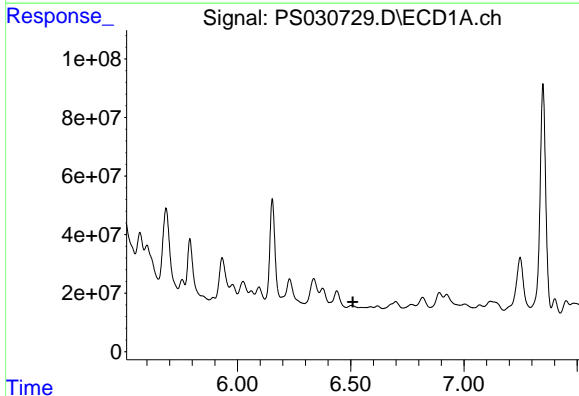
R.T.: 0.000 min
 Exp R.T.: 2.709 min
 Response: 0
 Conc: N.D.

Instrument :
 ECD_S
 ClientSampleId :



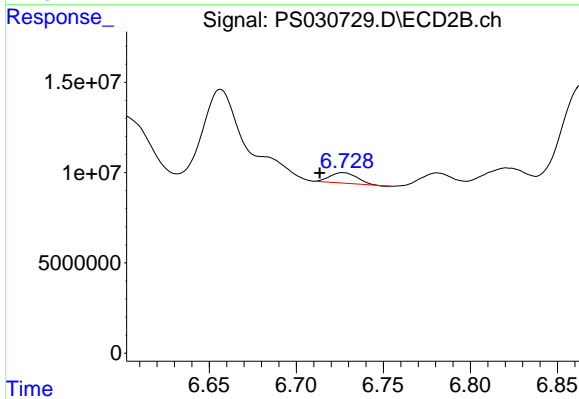
#1 Dalapon

R.T.: 2.748 min
 Delta R.T.: 0.038 min
 Response: 1069312676
 Conc: 379.98 ng/ml



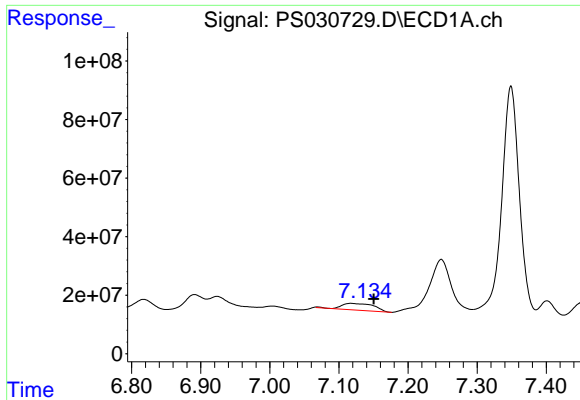
#2 3,5-DICHLOROBENZOIC ACID

R.T.: 6.503 min
 Delta R.T.: -0.006 min
 Response: -9208197
 Conc: N.D.



#2 3,5-DICHLOROBENZOIC ACID

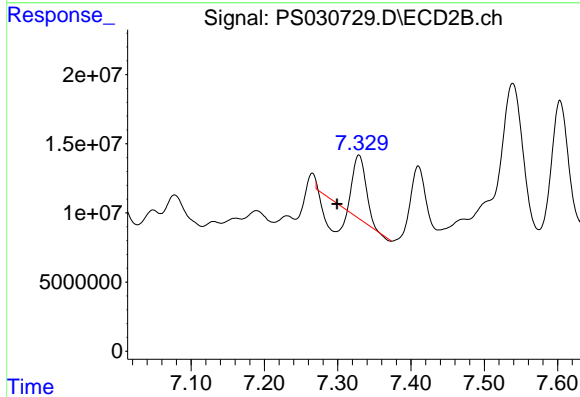
R.T.: 6.727 min
 Delta R.T.: 0.014 min
 Response: 6293002
 Conc: 3.89 ng/ml



#3 4-Nitrophenol

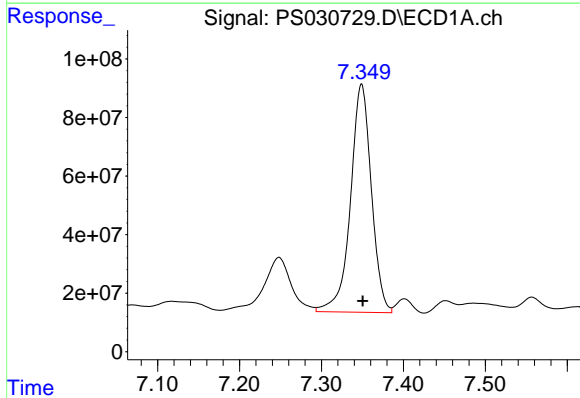
R.T.: 7.118 min
 Delta R.T.: -0.033 min
 Response: 74275868
 Conc: 45.56 ng/ml

Instrument :
 ECD_S
 ClientSampleId :



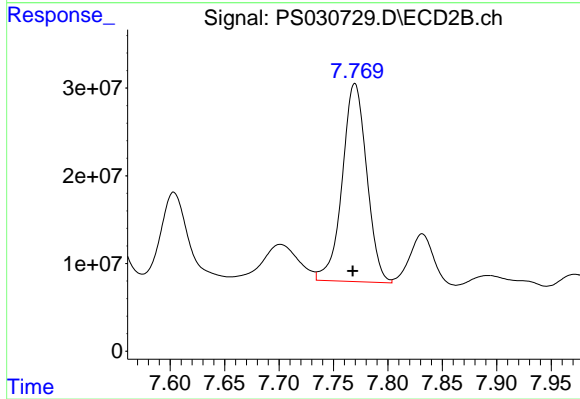
#3 4-Nitrophenol

R.T.: 7.329 min
 Delta R.T.: 0.030 min
 Response: 27393431
 Conc: 16.07 ng/ml



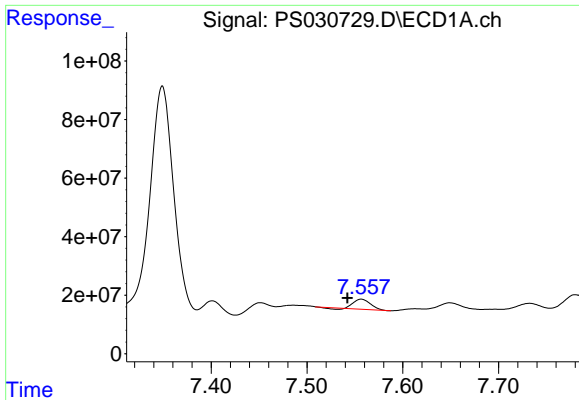
#4 2,4-DCAA

R.T.: 7.349 min
 Delta R.T.: -0.002 min
 Response: 1380108874
 Conc: 366.97 ng/ml



#4 2,4-DCAA

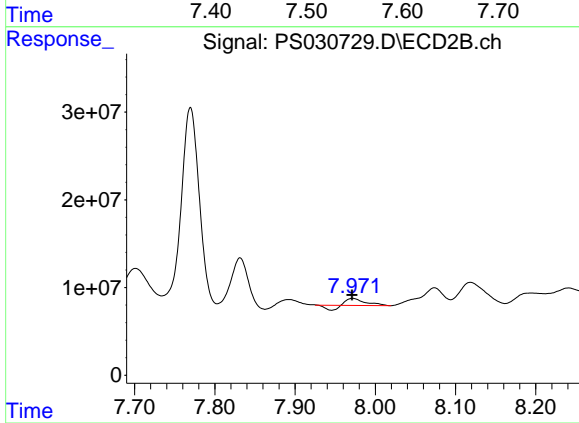
R.T.: 7.770 min
 Delta R.T.: 0.002 min
 Response: 354011307
 Conc: 327.88 ng/ml



#5 DICAMBA

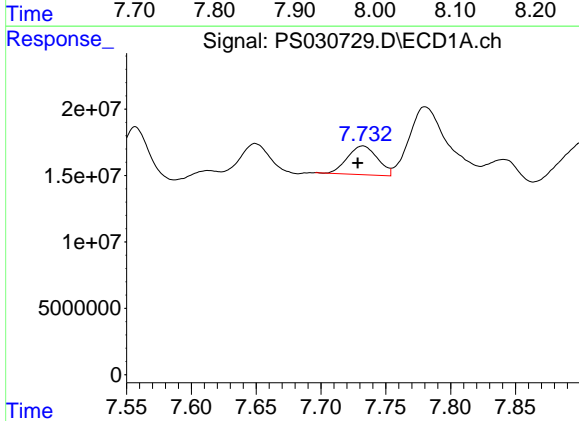
R.T.: 7.557 min
 Delta R.T.: 0.015 min
 Response: 40341982
 Conc: 2.58 ng/ml

Instrument :
 ECD_S
 ClientSampleId :



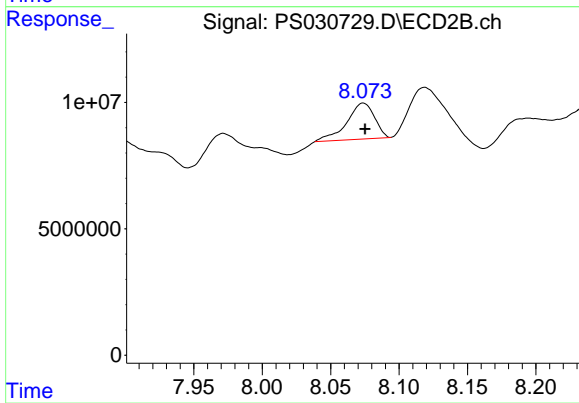
#5 DICAMBA

R.T.: 7.972 min
 Delta R.T.: 0.000 min
 Response: 8446978
 Conc: 1.27 ng/ml



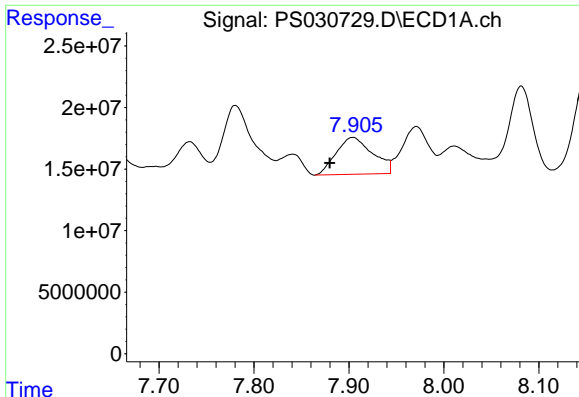
#6 MCP

R.T.: 7.732 min
 Delta R.T.: 0.004 min
 Response: 35043700
 Conc: 3.68 ug/ml



#6 MCP

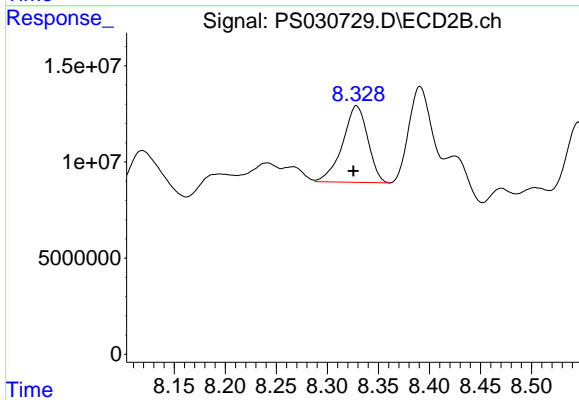
R.T.: 8.074 min
 Delta R.T.: -0.001 min
 Response: 20073138
 Conc: 9.12 ug/ml



#7 MCPA

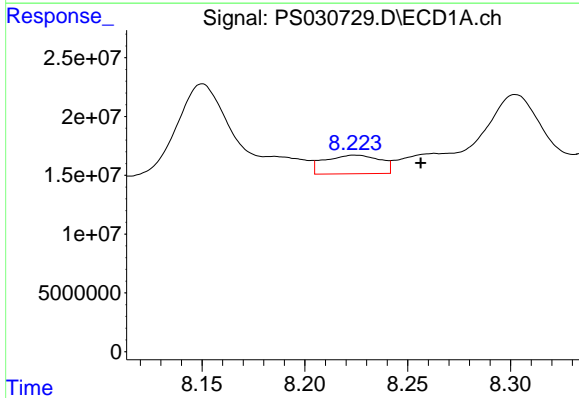
R.T.: 7.904 min
 Delta R.T.: 0.024 min
 Response: 80441268
 Conc: 6.75 ug/ml

Instrument :
 ECD_S
 ClientSampleId :



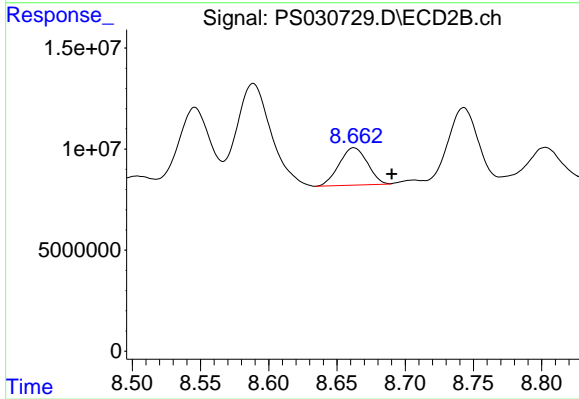
#7 MCPA

R.T.: 8.329 min
 Delta R.T.: 0.003 min
 Response: 68319969
 Conc: 21.31 ug/ml



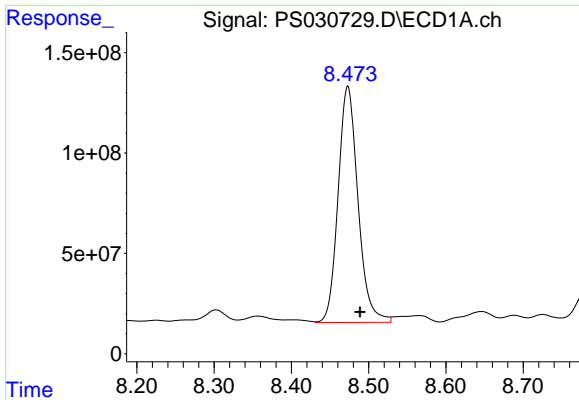
#8 DICHLORPROP

R.T.: 8.225 min
 Delta R.T.: -0.032 min
 Response: 29616748
 Conc: 8.06 ng/ml



#8 DICHLORPROP

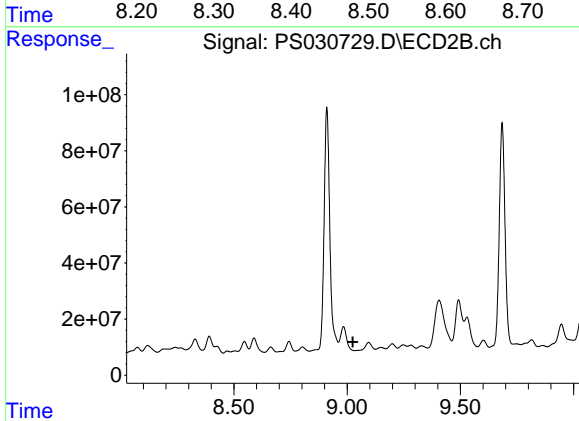
R.T.: 8.662 min
 Delta R.T.: -0.028 min
 Response: 26680477
 Conc: 17.41 ng/ml



#9 2,4-D

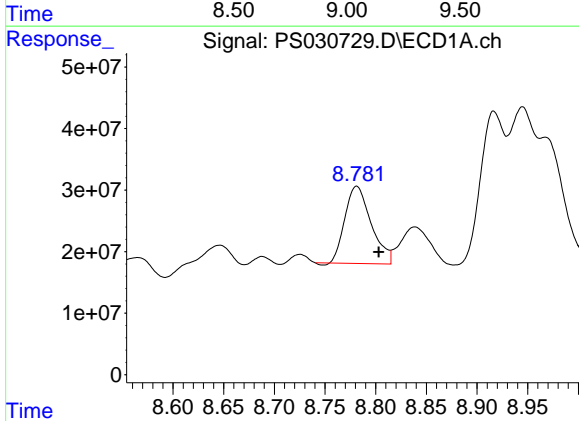
R.T.: 8.473 min
 Delta R.T.: -0.016 min
 Response: 2101943640
 Conc: 618.15 ng/ml

Instrument :
 ECD_S
 ClientSampleId :



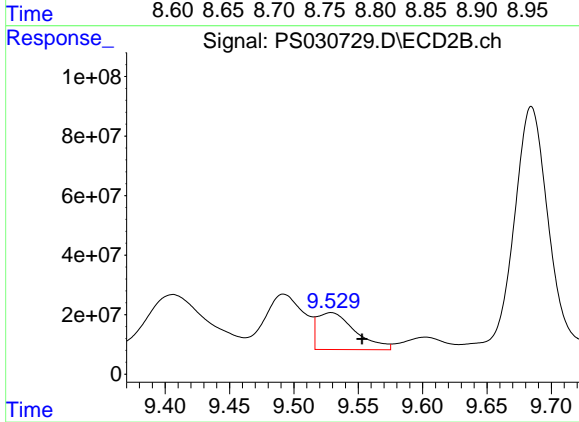
#9 2,4-D

R.T.: 8.984 min
 Delta R.T.: -0.041 min
 Response: -478168561
 Conc: N.D.



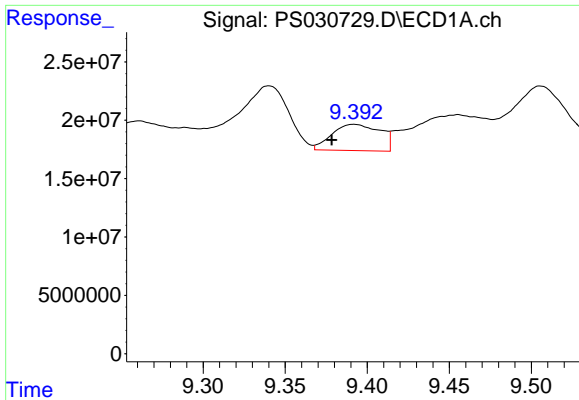
#10 Pentachlorophenol

R.T.: 8.781 min
 Delta R.T.: -0.022 min
 Response: 225560068
 Conc: 4.36 ng/ml



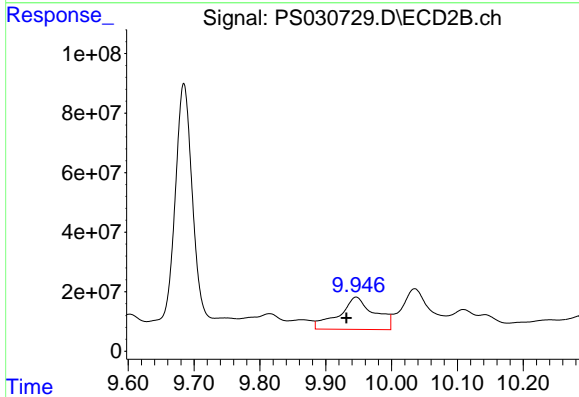
#10 Pentachlorophenol

R.T.: 9.529 min
 Delta R.T.: -0.024 min
 Response: 254393490
 Conc: 6.71 ng/ml

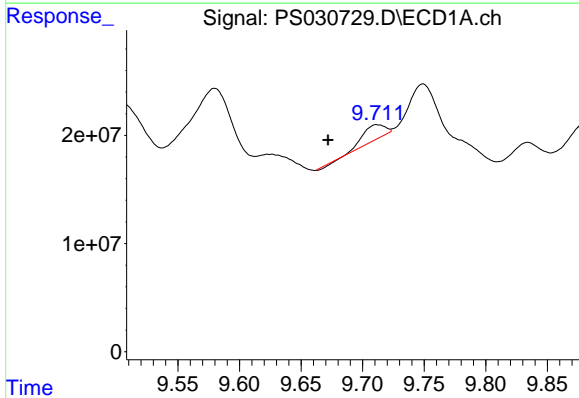


#11 2,4,5-TP (SILVEX)
 R.T.: 9.392 min
 Delta R.T.: 0.014 min
 Response: 46160891
 Conc: 2.31 ng/ml

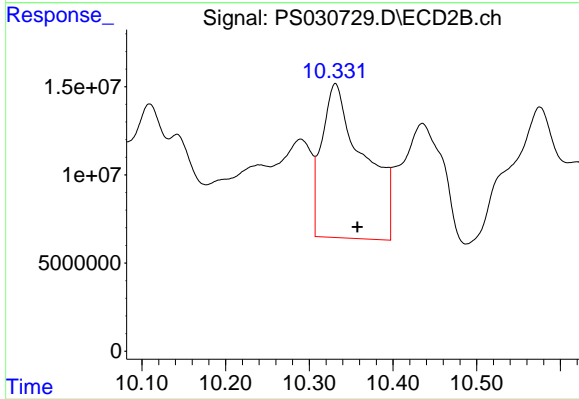
Instrument :
 ECD_S
 ClientSampleId :



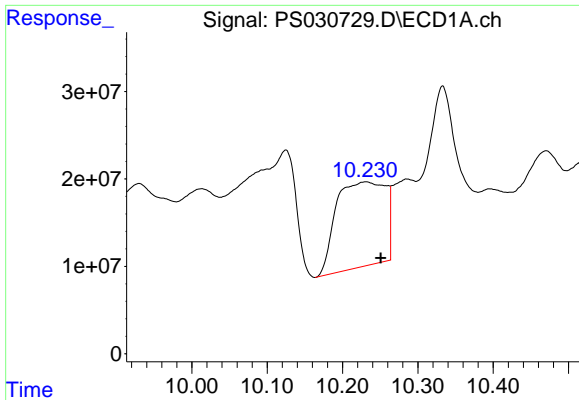
#11 2,4,5-TP (SILVEX)
 R.T.: 9.946 min
 Delta R.T.: 0.015 min
 Response: 405897612
 Conc: 28.28 ng/ml



#12 2,4,5-T
 R.T.: 9.712 min
 Delta R.T.: 0.040 min
 Response: 15895803
 Conc: N.D.



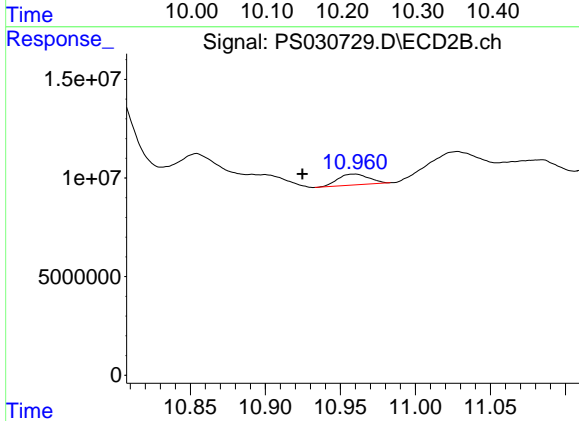
#12 2,4,5-T
 R.T.: 10.331 min
 Delta R.T.: -0.026 min
 Response: 304135332
 Conc: 22.06 ng/ml



#13 2,4-DB

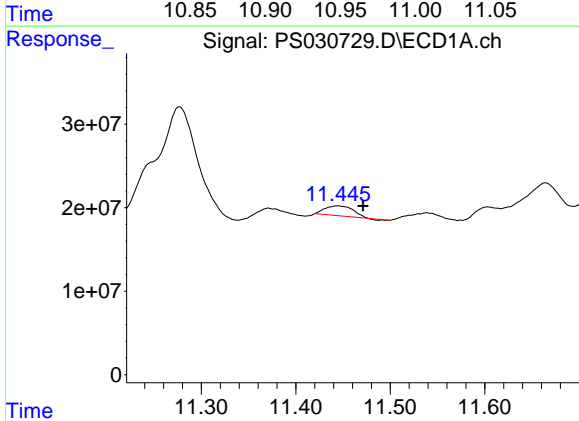
R.T.: 10.231 min
 Delta R.T.: -0.020 min
 Response: 440398333
 Conc: 178.22 ng/ml

Instrument :
 ECD_S
 ClientSampleId :



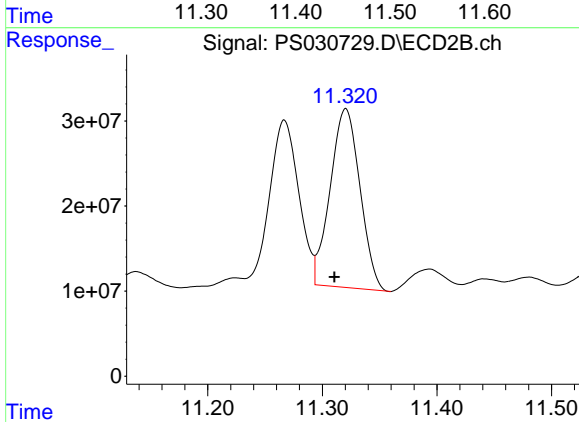
#13 2,4-DB

R.T.: 10.959 min
 Delta R.T.: 0.034 min
 Response: 7942930
 Conc: 6.69 ng/ml



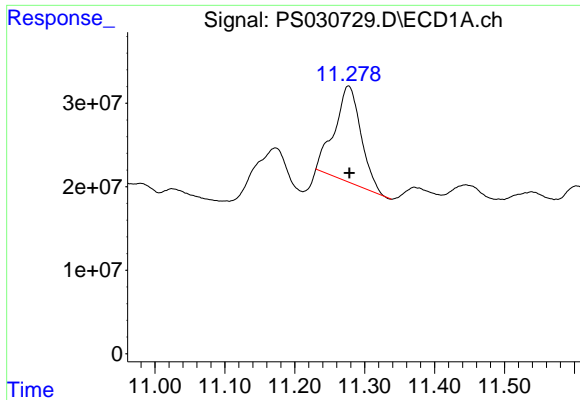
#14 DINOSEB

R.T.: 11.444 min
 Delta R.T.: -0.027 min
 Response: 23923990
 Conc: 1.69 ng/ml



#14 DINOSEB

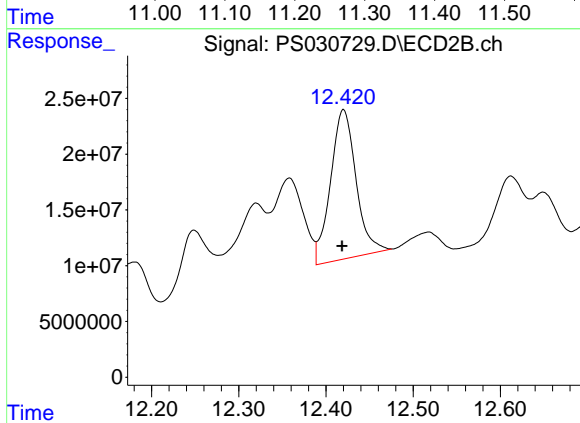
R.T.: 11.320 min
 Delta R.T.: 0.010 min
 Response: 378902711
 Conc: 34.58 ng/ml



#15 Picloram

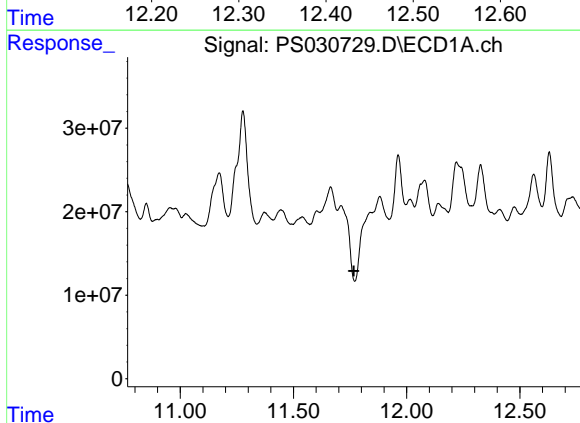
R.T.: 11.277 min
 Delta R.T.: -0.001 min
 Response: 301487788
 Conc: 18.06 ng/ml

Instrument :
 ECD_S
 ClientSampleId :



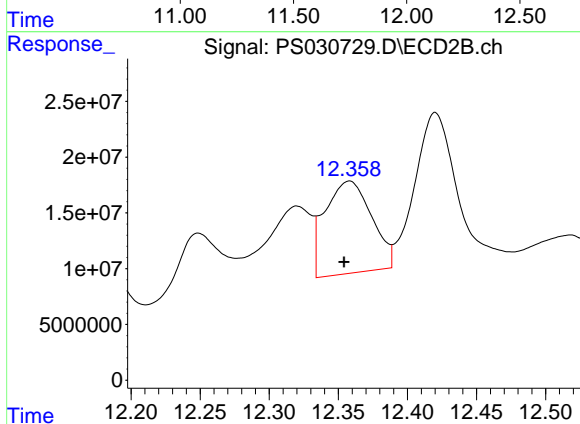
#15 Picloram

R.T.: 12.420 min
 Delta R.T.: 0.002 min
 Response: 271427021
 Conc: 11.32 ng/ml



#16 DCPA

R.T.: 0.000 min
 Exp R.T. : 11.767 min
 Response: 0
 Conc: N.D.



#16 DCPA

R.T.: 12.358 min
 Delta R.T.: 0.004 min
 Response: 193889260
 Conc: 9.03 ng/ml