

Data Path : Z:\pestpcbsrv\HPCHEM1\ECD_S\Data\PS061725\
 Data File : PS030734.D
 Signal(s) : Signal #1: ECD1A.ch Signal #2: ECD2B.ch
 Acq On : 17 Jun 2025 23:29
 Operator : AR\AJ
 Sample : Q2341-05
 Misc :
 ALS Vial : 17 Sample Multiplier: 1

Instrument :
 ECD_S
 ClientSampleId :

Integration File signal 1: autoint1.e
 Integration File signal 2: autoint2.e
 Quant Time: Jun 18 01:46:47 2025
 Quant Method : Z:\pestpcbsrv\HPCHEM1\ECD_S\Method\PS061625.M
 Quant Title : 8080.M
 QLast Update : Mon Jun 16 11:52:28 2025
 Response via : Initial Calibration
 Integrator: ChemStation

Volume Inj. : 1 µl
 Signal #1 Phase : ZB-MR2 Signal #2 Phase: ZB-MR2
 Signal #1 Info : 30M x 0.32mm x0.5 Signal #2 Info : 30M x 0.32mm x 0.25µm

Compound	RT#1	RT#2	Resp#1	Resp#2	ng/ml	ng/ml

System Monitoring Compounds						
4) S 2,4-DCAA	7.349	7.768	1095.7E6	289.9E6	291.345	268.486
Target Compounds						
1) T Dalapon	2.664f	2.683f	1129.3E6	981.6E6	180.558	348.796 #
2) T 3,5-DICHL...	6.501	6.727	81327932	17736820	14.958	10.964 #
3) T 4-Nitroph...	7.114f	7.323	55385010	63577477	33.973	37.292
5) T DICAMBA	7.558	7.972	14381437	-1168110	<MDL	N.D. #
6) T MCPP	7.721	8.076	18168162	74395519	1.910	33.795 #
7) T MCPA	7.878	8.363f	14849156	3240740	1.246	1.011
8) T DICHLORPROP	8.252	8.661f	17001536	37887816	4.626	24.725 #
9) T 2,4-D	8.518f	9.023	252.3E6	3109529	74.206	1.855 #
10) T Pentachlo...	8.780	9.536	4794398	53657342	<MDL	1.414 #
11) T 2,4,5-TP ...	9.340f	9.905f	69091973	177.5E6	3.453	12.364 #
12) T 2,4,5-T	9.632f	10.353	39224688	211.5E6	2.359	15.337 #
13) T 2,4-DB	10.282f	10.904	737.9E6	20130158	298.601	16.965 #
14) T DINOSEB	11.451	11.334	25274387	81976064	1.785	7.481 #
15) T Picloram	11.312f	12.427	99251560	15424879	5.945	<MDL #
16) T DCPA	11.742	12.328f	137.6E6	65752485	5.299	3.062 #

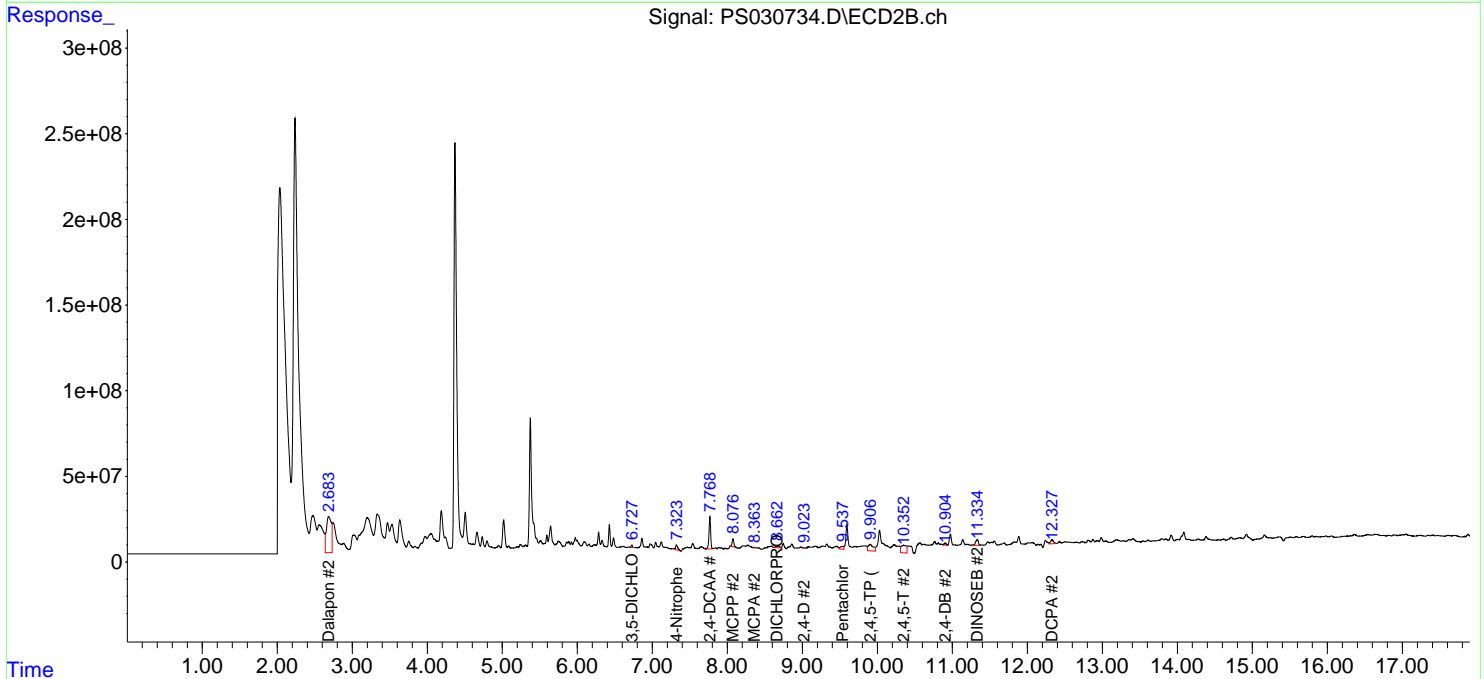
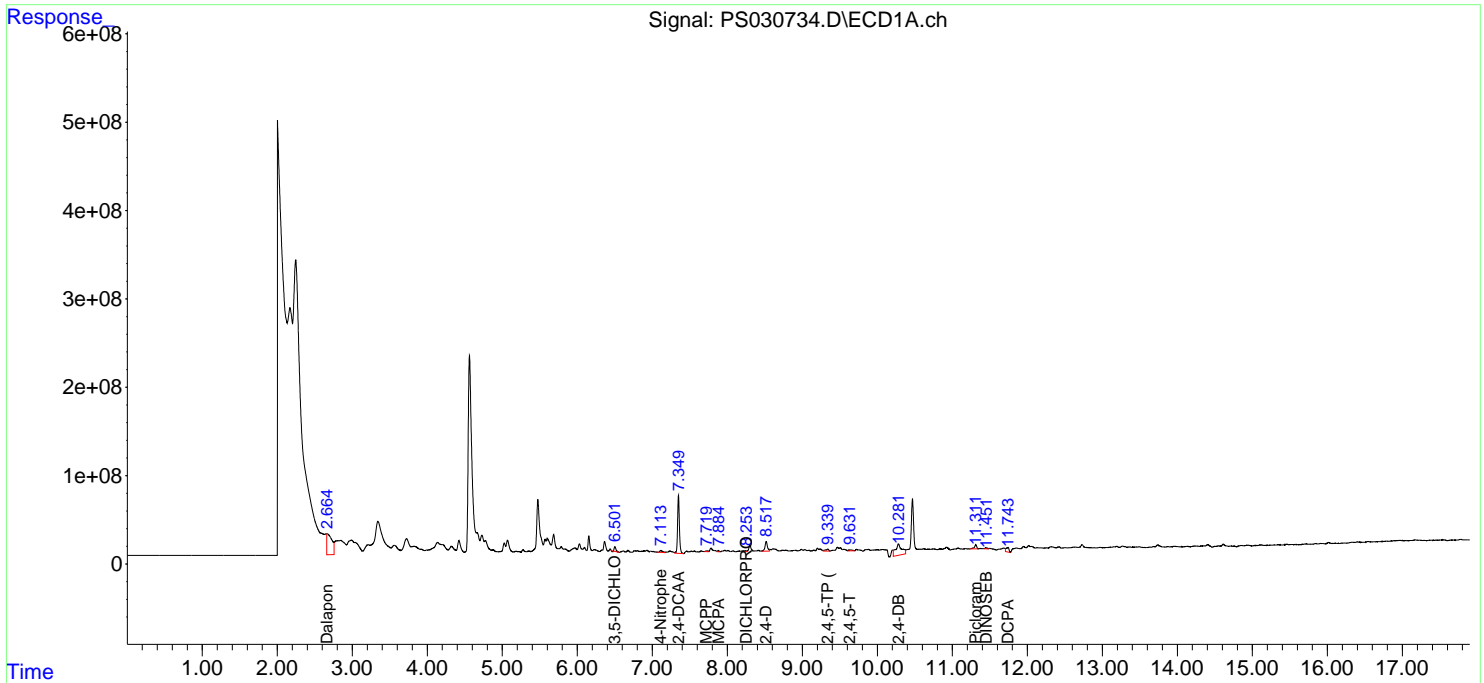
(f)=RT Delta > 1/2 Window (#)=Amounts differ by > 25% (m)=manual int.

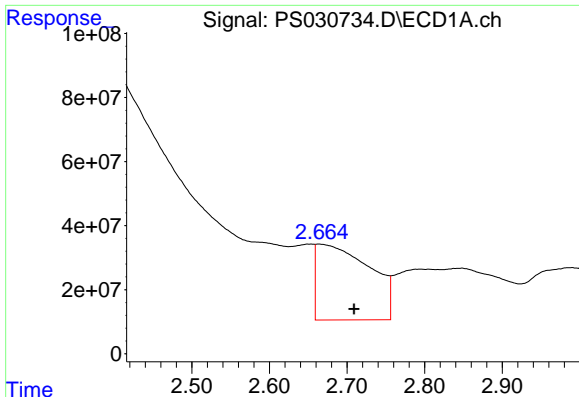
Data Path : Z:\pestpcbsrv\HPCHEM1\ECD_S\Data\PS061725\
 Data File : PS030734.D
 Signal(s) : Signal #1: ECD1A.ch Signal #2: ECD2B.ch
 Acq On : 17 Jun 2025 23:29
 Operator : AR\AJ
 Sample : Q2341-05
 Misc :
 ALS Vial : 17 Sample Multiplier: 1

Instrument :
 ECD_S
 ClientSampleId :

Integration File signal 1: autoint1.e
 Integration File signal 2: autoint2.e
 Quant Time: Jun 18 01:46:47 2025
 Quant Method : Z:\pestpcbsrv\HPCHEM1\ECD_S\Method\PS061625.M
 Quant Title : 8080.M
 QLast Update : Mon Jun 16 11:52:28 2025
 Response via : Initial Calibration
 Integrator: ChemStation

Volume Inj. : 1 µl
 Signal #1 Phase : ZB-MR1 Signal #2 Phase: ZB-MR2
 Signal #1 Info : 30M x 0.32mm x0.5 Signal #2 Info : 30M x 0.32mm x 0.25µm

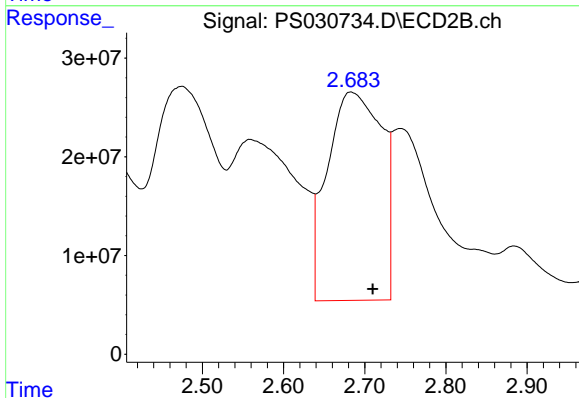




#1 Dalapon

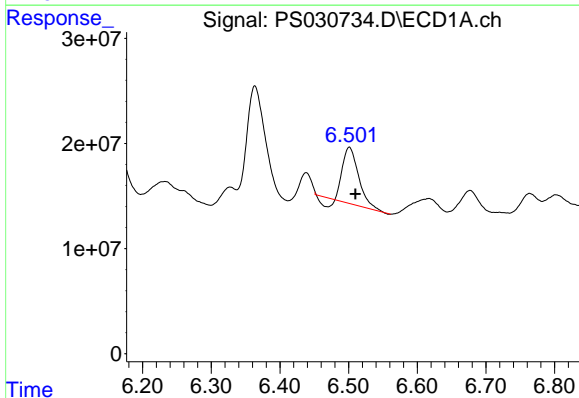
R.T.: 2.664 min
 Delta R.T.: -0.045 min
 Response: 1129343239
 Conc: 180.56 ng/ml

Instrument :
 ECD_S
 ClientSampleId :



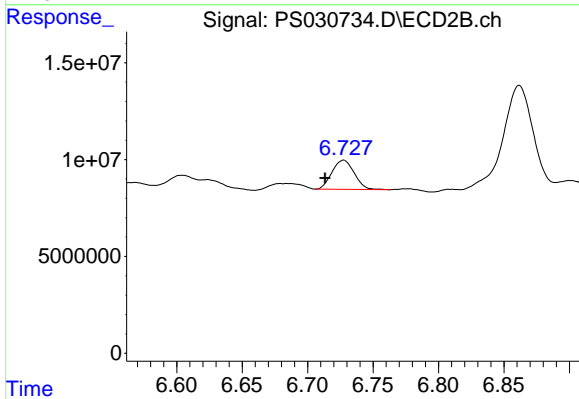
#1 Dalapon

R.T.: 2.683 min
 Delta R.T.: -0.027 min
 Response: 981567329
 Conc: 348.80 ng/ml



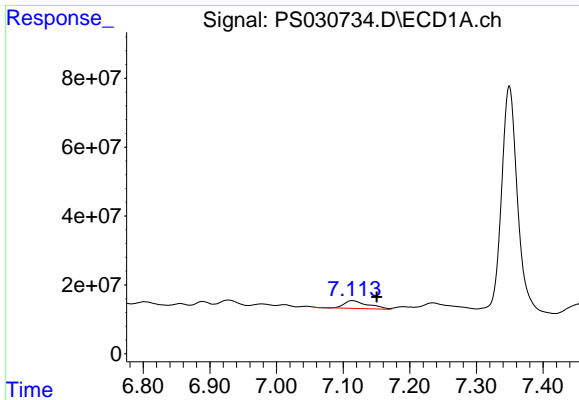
#2 3,5-DICHLOROBENZOIC ACID

R.T.: 6.501 min
 Delta R.T.: -0.009 min
 Response: 81327932
 Conc: 14.96 ng/ml



#2 3,5-DICHLOROBENZOIC ACID

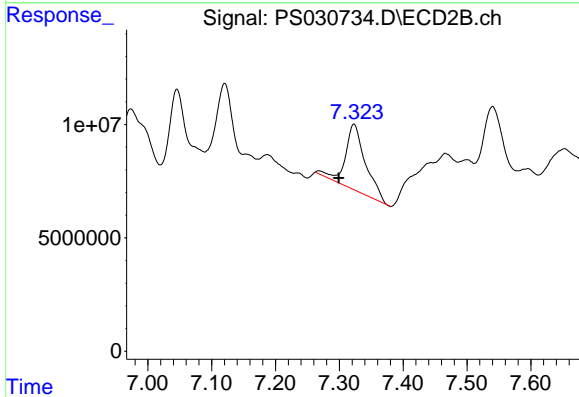
R.T.: 6.727 min
 Delta R.T.: 0.014 min
 Response: 17736820
 Conc: 10.96 ng/ml



#3 4-Nitrophenol

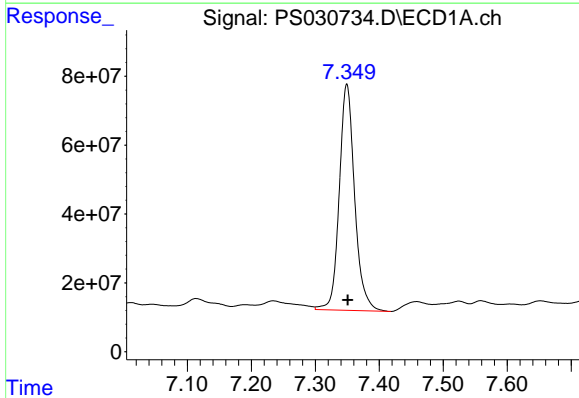
R.T.: 7.114 min
 Delta R.T.: -0.037 min
 Response: 55385010
 Conc: 33.97 ng/ml

Instrument :
 ECD_S
 ClientSampleId :



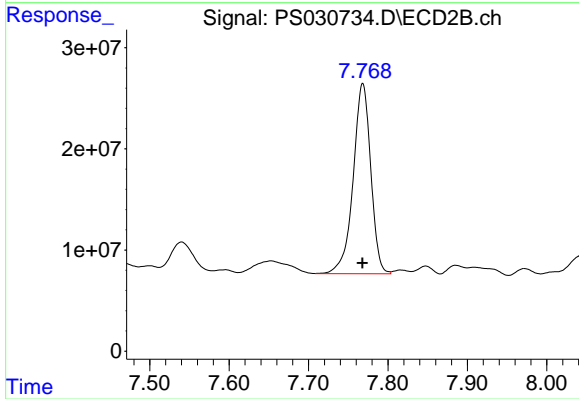
#3 4-Nitrophenol

R.T.: 7.323 min
 Delta R.T.: 0.024 min
 Response: 63577477
 Conc: 37.29 ng/ml



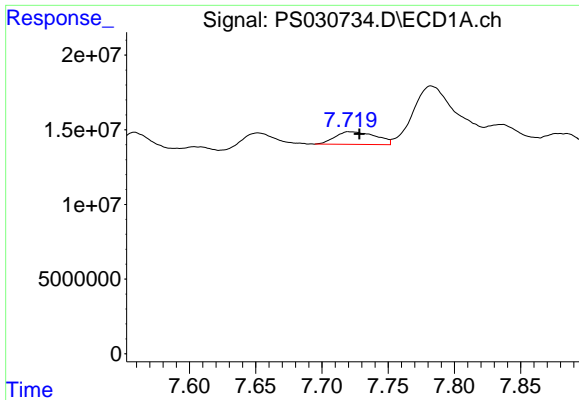
#4 2,4-DCAA

R.T.: 7.349 min
 Delta R.T.: -0.001 min
 Response: 1095695657
 Conc: 291.35 ng/ml



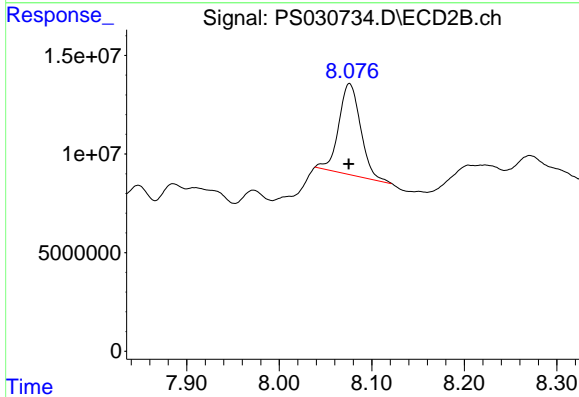
#4 2,4-DCAA

R.T.: 7.768 min
 Delta R.T.: 0.000 min
 Response: 289882148
 Conc: 268.49 ng/ml

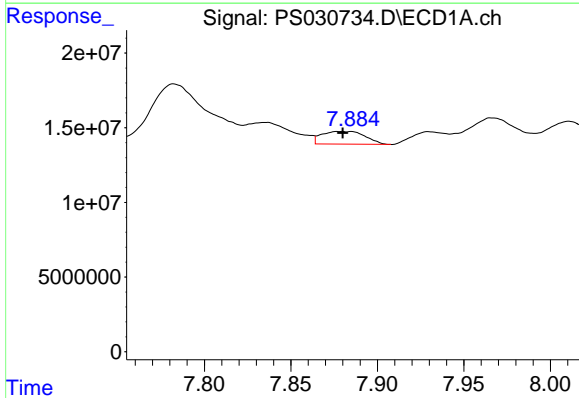


#6 MCP
 R.T.: 7.721 min
 Delta R.T.: -0.008 min
 Response: 18168162
 Conc: 1.91 ug/ml

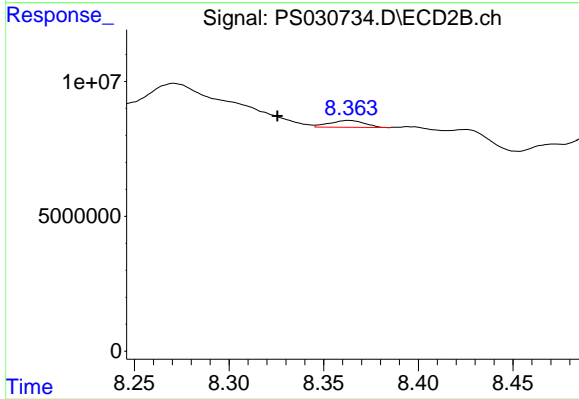
Instrument :
 ECD_S
 ClientSampleId :



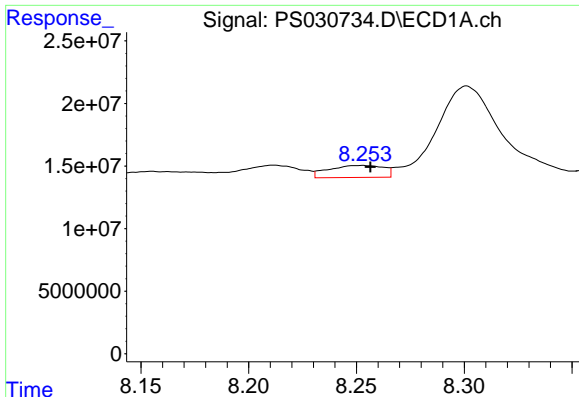
#6 MCP
 R.T.: 8.076 min
 Delta R.T.: 0.000 min
 Response: 74395519
 Conc: 33.79 ug/ml



#7 MCP
 R.T.: 7.878 min
 Delta R.T.: -0.002 min
 Response: 14849156
 Conc: 1.25 ug/ml



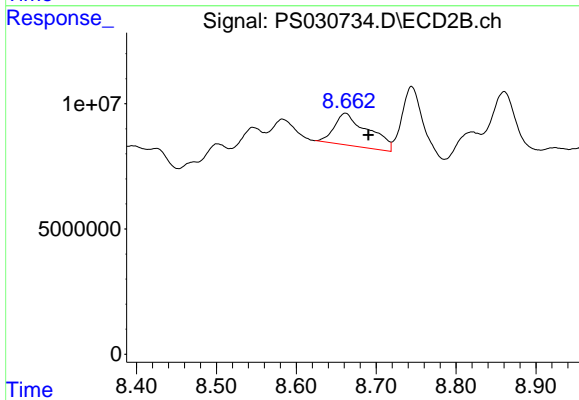
#7 MCP
 R.T.: 8.363 min
 Delta R.T.: 0.038 min
 Response: 3240740
 Conc: 1.01 ug/ml



#8 DICHLORPROP

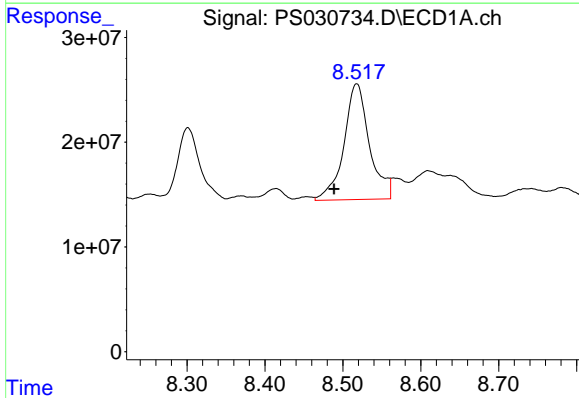
R.T.: 8.252 min
 Delta R.T.: -0.004 min
 Response: 17001536
 Conc: 4.63 ng/ml

Instrument :
 ECD_S
 ClientSampleId :



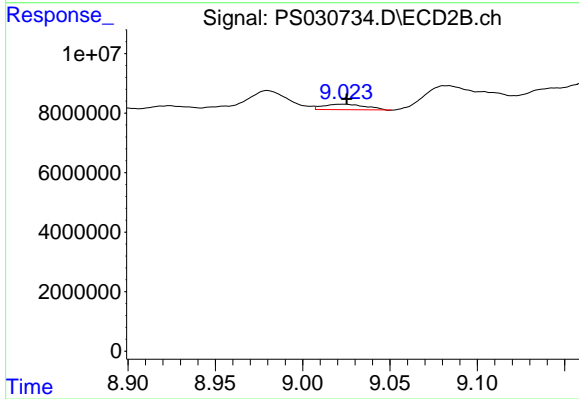
#8 DICHLORPROP

R.T.: 8.661 min
 Delta R.T.: -0.029 min
 Response: 37887816
 Conc: 24.73 ng/ml



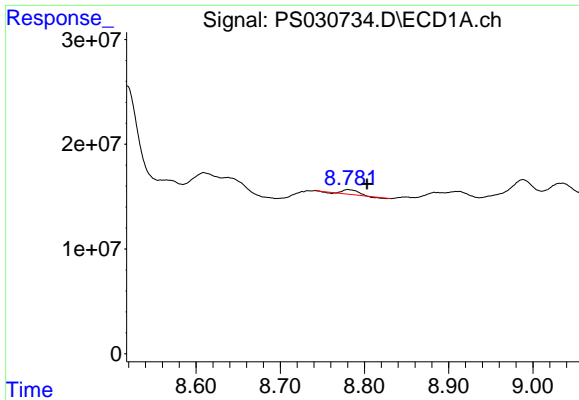
#9 2,4-D

R.T.: 8.518 min
 Delta R.T.: 0.029 min
 Response: 252326249
 Conc: 74.21 ng/ml



#9 2,4-D

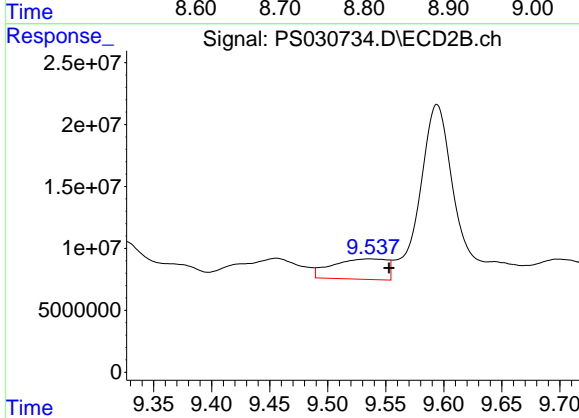
R.T.: 9.023 min
 Delta R.T.: -0.002 min
 Response: 3109529
 Conc: 1.85 ng/ml



#10 Pentachlorophenol

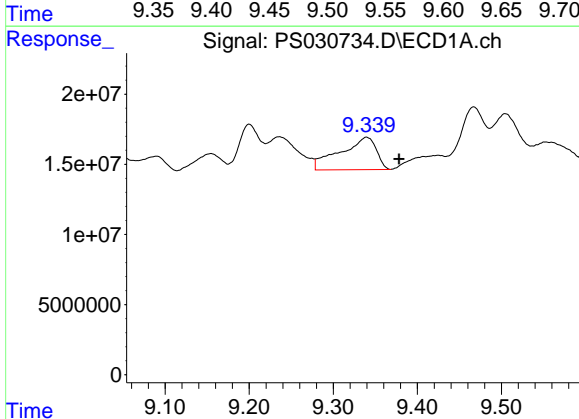
R.T.: 8.780 min
 Delta R.T.: -0.022 min
 Response: 4794398
 Conc: N.D.

Instrument :
 ECD_S
 ClientSampleId :



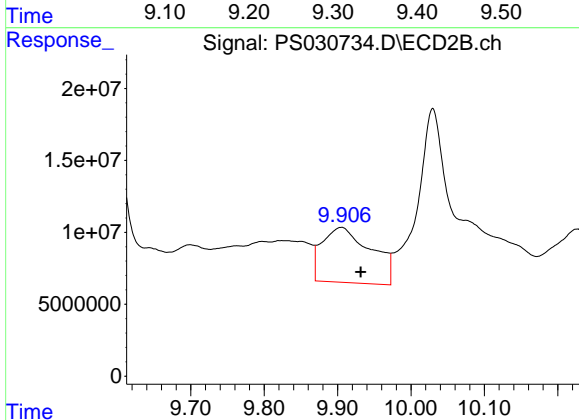
#10 Pentachlorophenol

R.T.: 9.536 min
 Delta R.T.: -0.017 min
 Response: 53657342
 Conc: 1.41 ng/ml



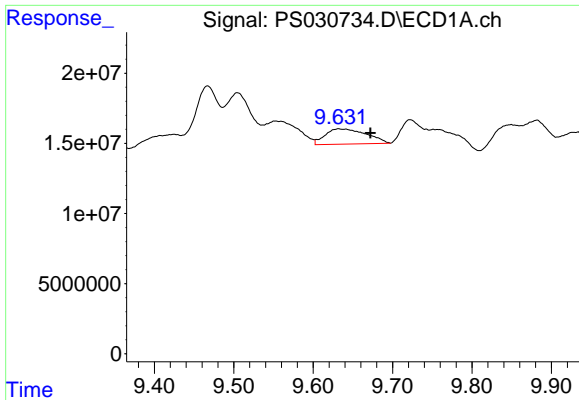
#11 2,4,5-TP (SILVEX)

R.T.: 9.340 min
 Delta R.T.: -0.039 min
 Response: 69091973
 Conc: 3.45 ng/ml



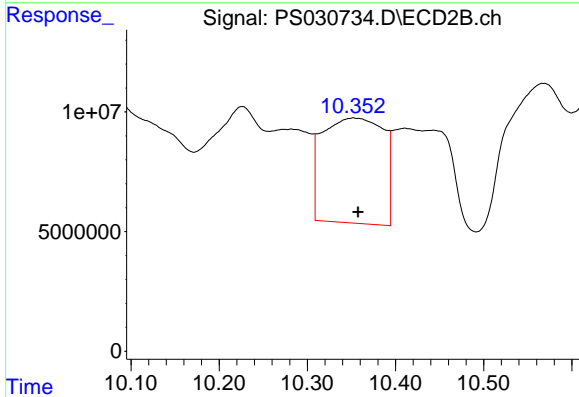
#11 2,4,5-TP (SILVEX)

R.T.: 9.905 min
 Delta R.T.: -0.027 min
 Response: 177485078
 Conc: 12.36 ng/ml

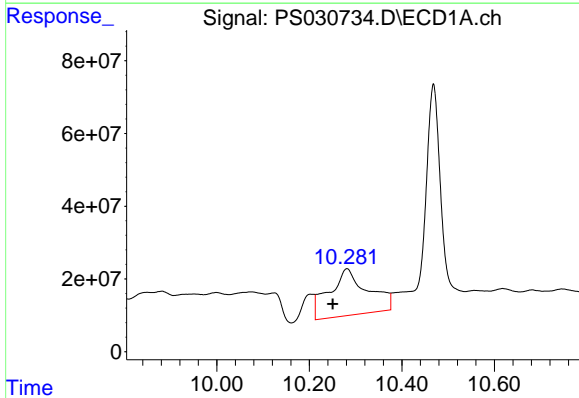


#12 2,4,5-T
 R.T.: 9.632 min
 Delta R.T.: -0.040 min
 Response: 39224688
 Conc: 2.36 ng/ml

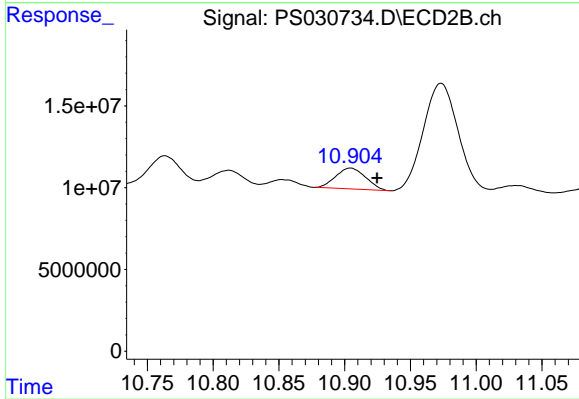
Instrument :
 ECD_S
 ClientSampleId :



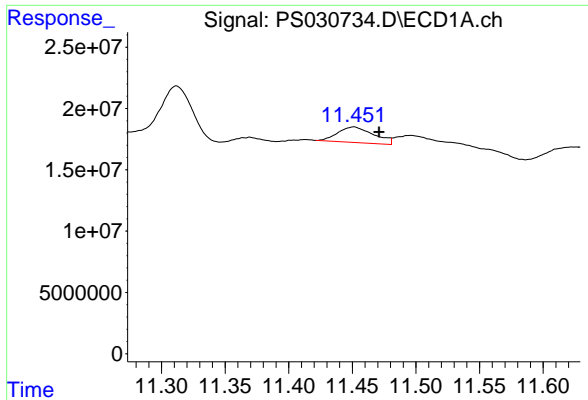
#12 2,4,5-T
 R.T.: 10.353 min
 Delta R.T.: -0.005 min
 Response: 211477775
 Conc: 15.34 ng/ml



#13 2,4-DB
 R.T.: 10.282 min
 Delta R.T.: 0.031 min
 Response: 737890653
 Conc: 298.60 ng/ml



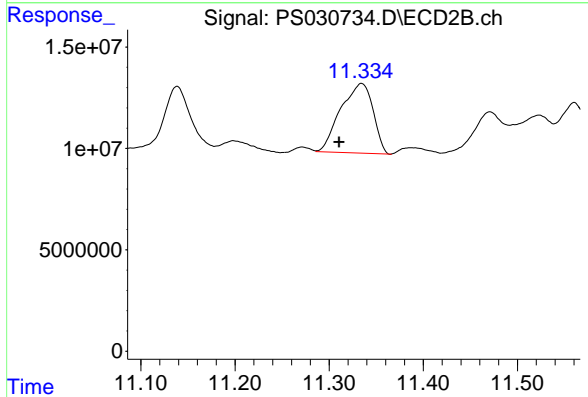
#13 2,4-DB
 R.T.: 10.904 min
 Delta R.T.: -0.020 min
 Response: 20130158
 Conc: 16.97 ng/ml



#14 DINOSEB

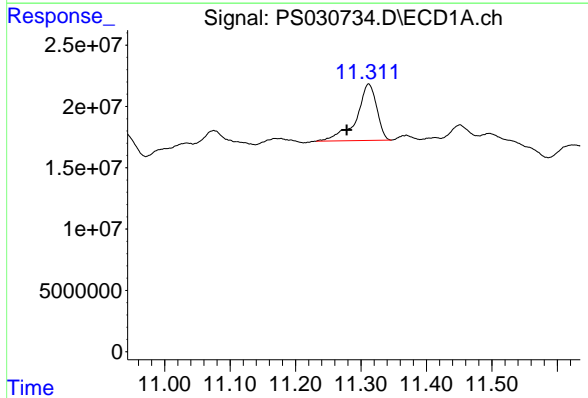
R.T.: 11.451 min
 Delta R.T.: -0.020 min
 Response: 25274387
 Conc: 1.78 ng/ml

Instrument :
 ECD_S
 ClientSampleId :



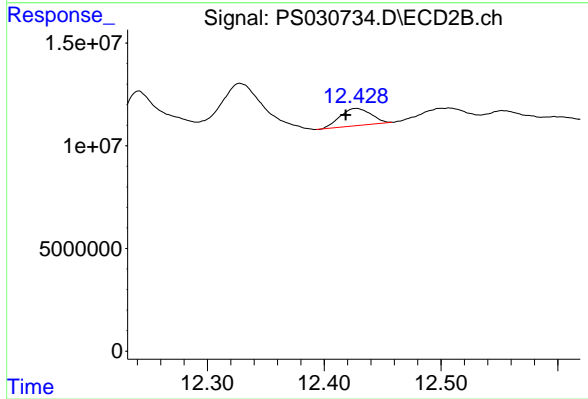
#14 DINOSEB

R.T.: 11.334 min
 Delta R.T.: 0.024 min
 Response: 81976064
 Conc: 7.48 ng/ml



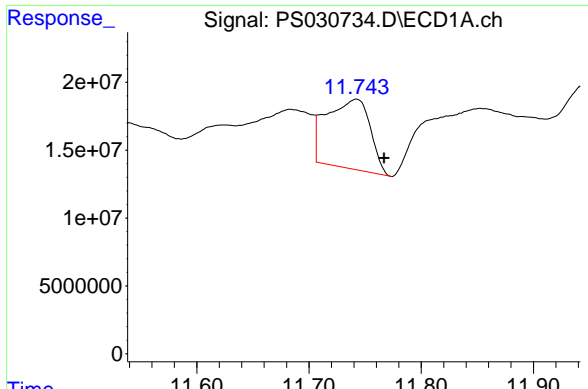
#15 Picloram

R.T.: 11.312 min
 Delta R.T.: 0.033 min
 Response: 99251560
 Conc: 5.94 ng/ml



#15 Picloram

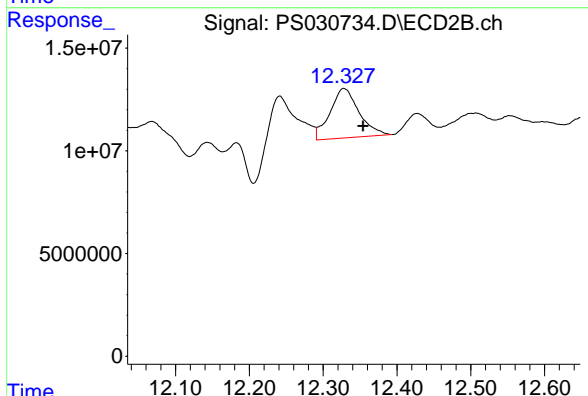
R.T.: 12.427 min
 Delta R.T.: 0.009 min
 Response: 15424879
 Conc: N.D.



#16 DCPA

R.T.: 11.742 min
Delta R.T.: -0.025 min
Response: 137642524
Conc: 5.30 ng/ml

Instrument :
ECD_S
ClientSampleId :



#16 DCPA

R.T.: 12.328 min
Delta R.T.: -0.026 min
Response: 65752485
Conc: 3.06 ng/ml