

Data Path : Z:\pestpcbsrv\HPCHEM1\ECD_S\Data\PS061819\
 Data File : PS005114.D
 Signal(s) : Signal #1: ECD1A.ch Signal #2: ECD2B.ch
 Acq On : 19 Jun 2019 03:01
 Operator : SM\AJ
 Sample : HSTDCCC750
 Misc :
 ALS Vial : 3 Sample Multiplier: 1

Instrument :
 ECD_S
 ClientSampleId :
 HSTDCCC750

Integration File signal 1: autoint1.e
 Integration File signal 2: autoint2.e
 Quant Time: Jun 19 03:20:48 2019
 Quant Method : Z:\pestpcbsrv\HPCHEM1\ECD_S\Method\PS061219.M
 Quant Title : 8080.M
 QLast Update : Fri Jun 14 09:57:49 2019
 Response via : Initial Calibration
 Integrator: ChemStation

Volume Inj. : 2 µl
 Signal #1 Phase : Rtx-CLPesticides Signal #2 Phase: Rtx-CLPesticides2
 Signal #1 Info : 30M x 0.32mm x0.5 Signal #2 Info : 30M x 0.32mm x 0.25µm

	Compound	RT#1	RT#2	Resp#1	Resp#2	ng/ml	ng/ml

System Monitoring Compounds							
4) S	2,4-DCAA	5.572	5.285	961.5E6	701.1E6	729.613	702.852
Target Compounds							
1) T	Dalapon	2.100	1.796	1095.6E6	739.7E6	628.978	566.554
2) T	3,5-DICHL...	4.922	4.579	1250.0E6	835.5E6	663.197	652.803
3) T	4-Nitroph...	5.419	4.961	223.4E6	315.1E6	490.462	694.871 #
5) T	DICAMBA	5.732	5.419	3789.1E6	2535.6E6	669.482	660.215
6) T	MCP P	5.892	5.508	301.8E6	190.8E6	67.670	66.049
7) T	MCPA	6.029	5.693	364.3E6	273.6E6	58.137	64.900
8) T	DICHLORPROP	6.371	5.974	920.6E6	640.4E6	658.033	659.343
9) T	2,4-D	6.586	6.246	953.5E6	717.8E6	706.661	670.765
10) T	Pentachlo...	6.858	6.623	13066.9E6	8612.0E6	679.240	668.430
11) T	2,4,5-TP ...	7.395	6.986	5346.3E6	3564.2E6	680.435	665.868
12) T	2,4,5-T	7.668	7.348	5305.0E6	3264.2E6	663.922	692.054
13) T	2,4-DB	8.201	7.836	684.8E6	439.7E6	746.011	692.782
14) T	DINOSEB	9.301	8.152	4177.5E6	2544.2E6	637.078	654.958
15) T	Picloram	9.129	9.093	5978.7E6	3899.0E6	602.196	571.600
16) T	DCPA	9.573	9.052	6493.6E6	4480.5E6	668.789	679.434

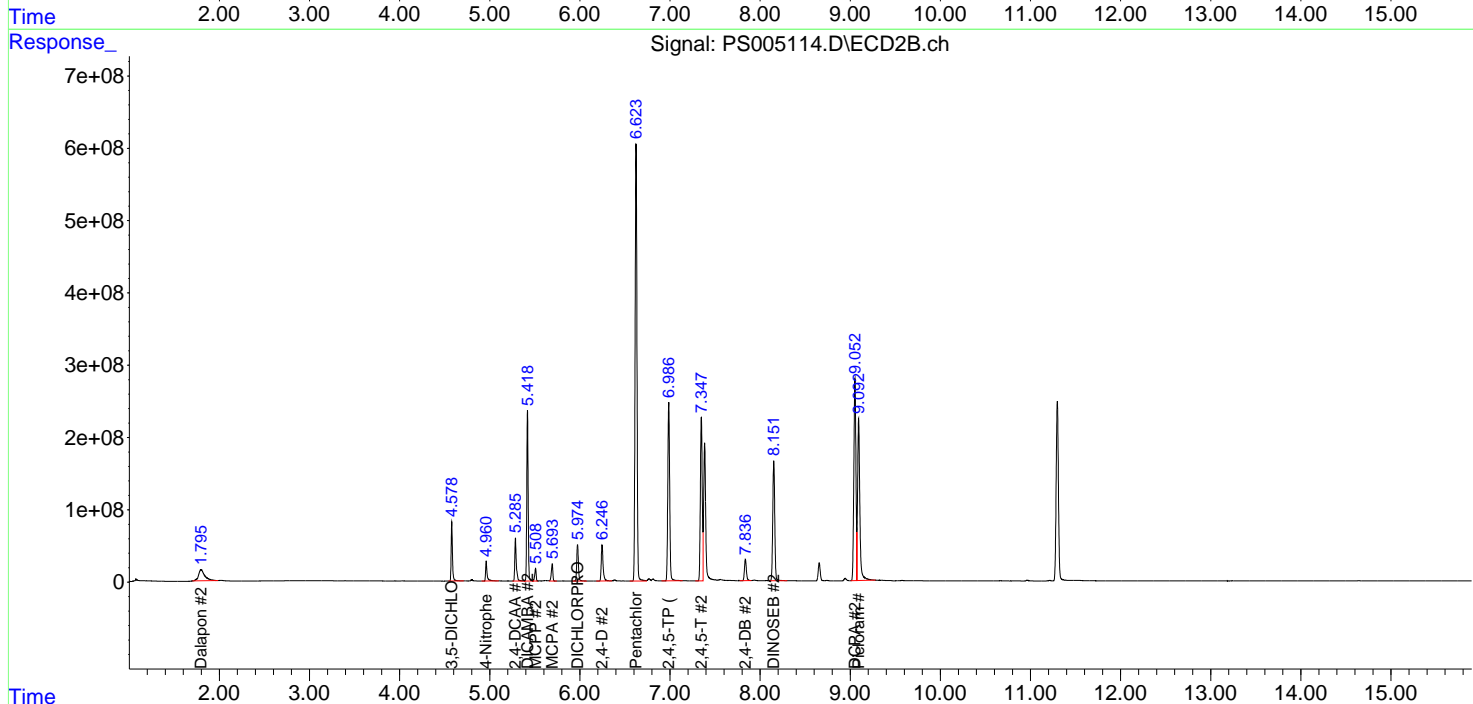
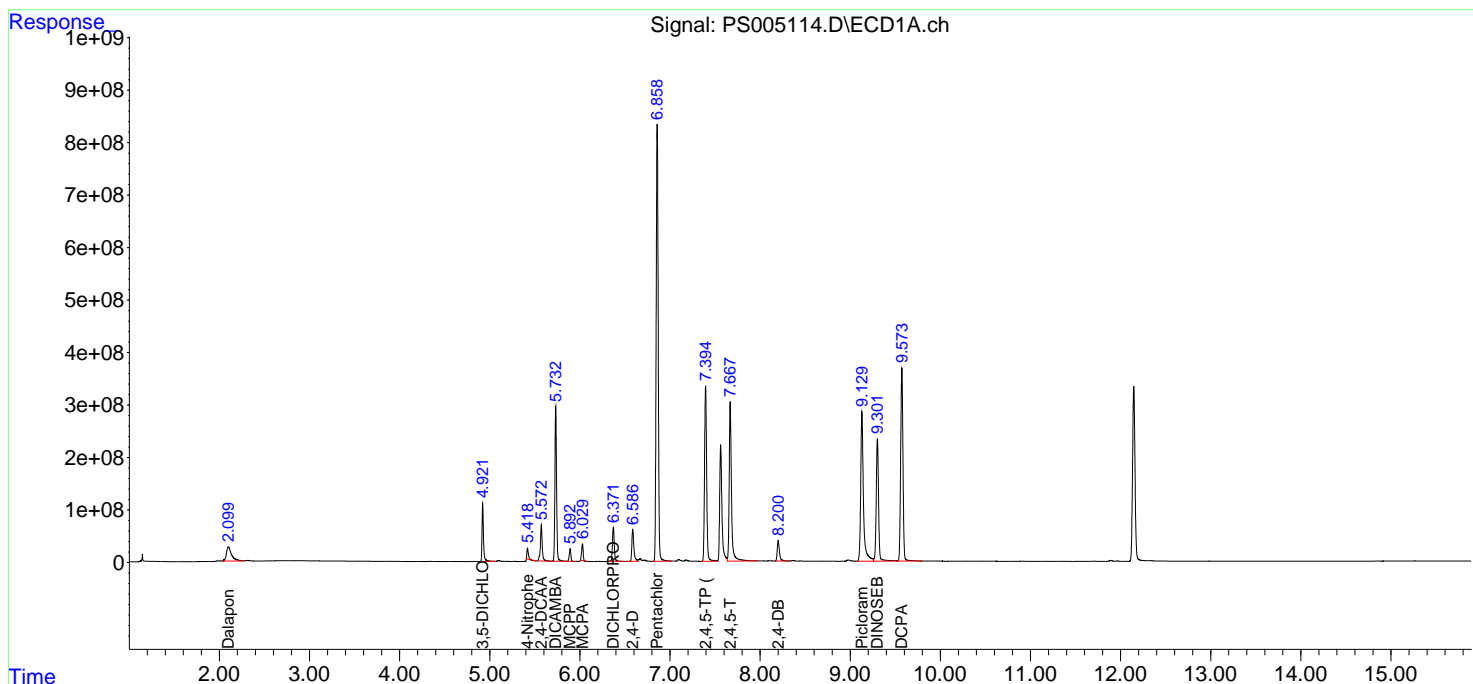
(f)=RT Delta > 1/2 Window (#)=Amounts differ by > 25% (m)=manual int.

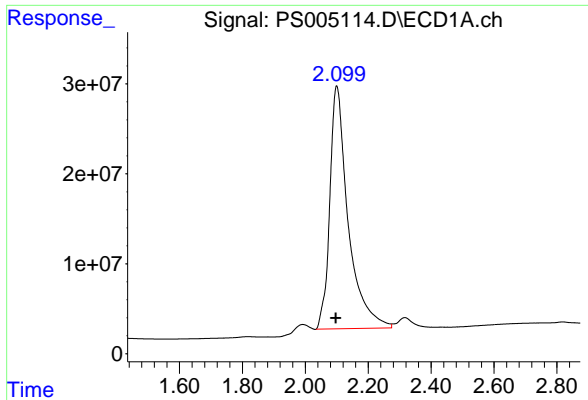
Data Path : Z:\pestpcbsrv\HPCHEM1\ECD_S\Data\PS061819\
 Data File : PS005114.D
 Signal(s) : Signal #1: ECD1A.ch Signal #2: ECD2B.ch
 Acq On : 19 Jun 2019 03:01
 Operator : SM\AJ
 Sample : HSTDCCC750
 Misc :
 ALS Vial : 3 Sample Multiplier: 1

Instrument :
 ECD_S
 ClientSampleID :
 HSTDCCC750

Integration File signal 1: autoint1.e
 Integration File signal 2: autoint2.e
 Quant Time: Jun 19 03:20:48 2019
 Quant Method : Z:\pestpcbsrv\HPCHEM1\ECD_S\Method\PS061219.M
 Quant Title : 8080.M
 QLast Update : Fri Jun 14 09:57:49 2019
 Response via : Initial Calibration
 Integrator: ChemStation

Volume Inj. : 2 µl
 Signal #1 Phase : Rtx-CLPesticides Signal #2 Phase: Rtx-CLPesticides2
 Signal #1 Info : 30M x 0.32mm x 0.5 Signal #2 Info : 30M x 0.32mm x 0.25µm

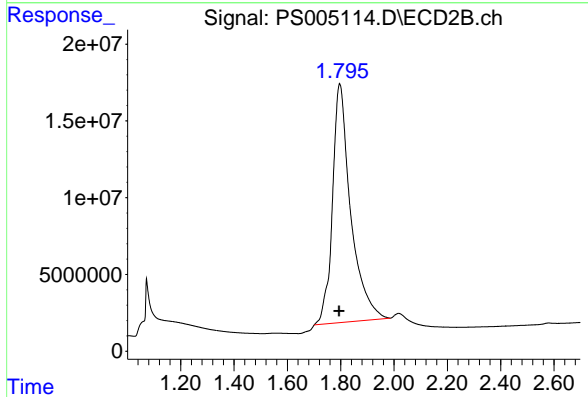




#1 Dalapon

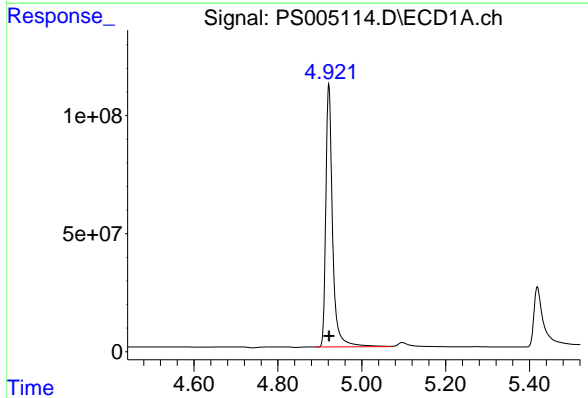
R.T.: 2.100 min
 Delta R.T.: 0.003 min
 Response: 1095622869
 Conc: 628.98 ng/ml

Instrument :
 ECD_S
 ClientSampleId :
 HSTDCCC750



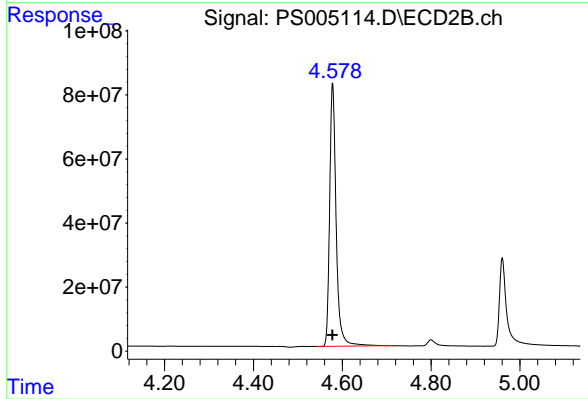
#1 Dalapon

R.T.: 1.796 min
 Delta R.T.: 0.003 min
 Response: 739673671
 Conc: 566.55 ng/ml



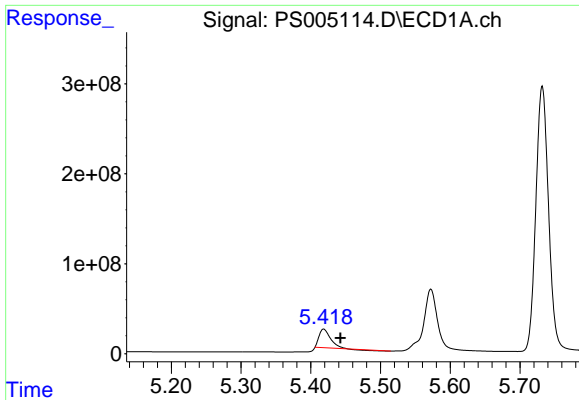
#2 3,5-DICHLOROBENZOIC ACID

R.T.: 4.922 min
 Delta R.T.: 0.000 min
 Response: 1250019509
 Conc: 663.20 ng/ml



#2 3,5-DICHLOROBENZOIC ACID

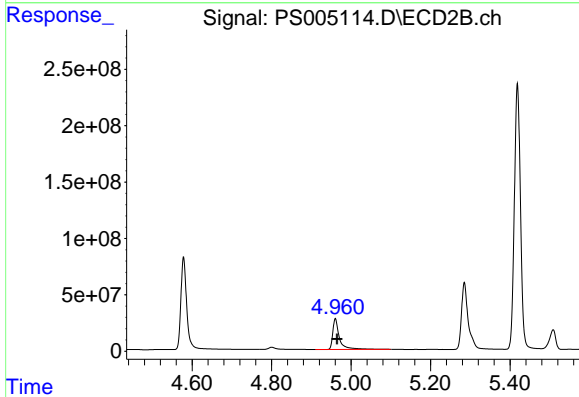
R.T.: 4.579 min
 Delta R.T.: 0.000 min
 Response: 835450369
 Conc: 652.80 ng/ml



#3 4-Nitrophenol

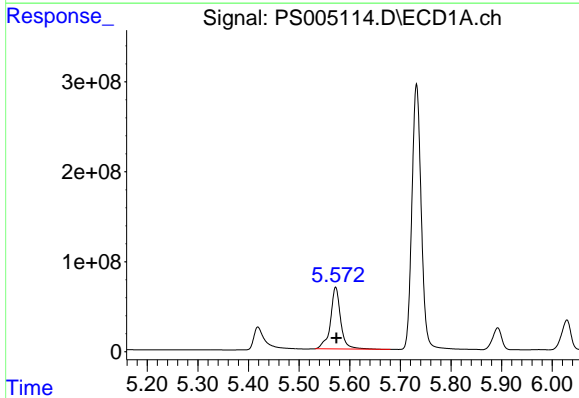
R.T.: 5.419 min
 Delta R.T.: -0.024 min
 Response: 223394754
 Conc: 490.46 ng/ml

Instrument :
 ECD_S
 ClientSampleId :
 HSTDCCC750



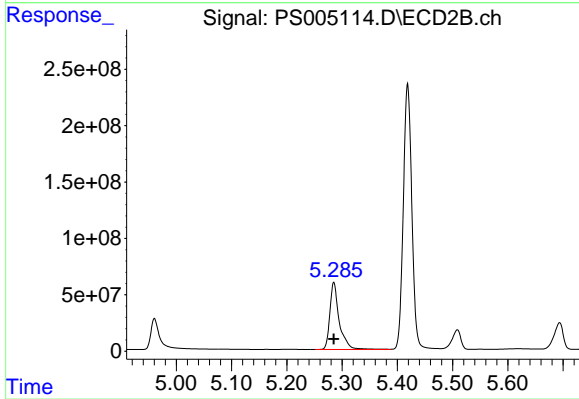
#3 4-Nitrophenol

R.T.: 4.961 min
 Delta R.T.: -0.005 min
 Response: 315099562
 Conc: 694.87 ng/ml



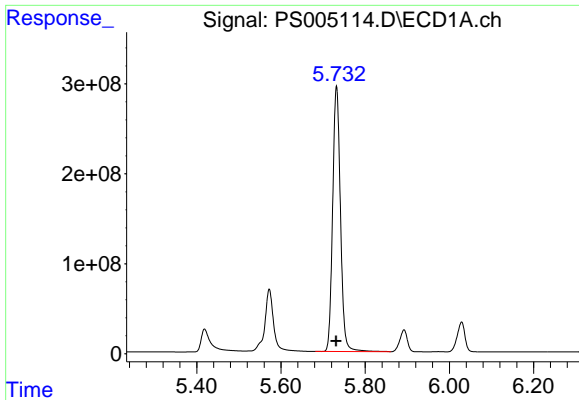
#4 2,4-DCAA

R.T.: 5.572 min
 Delta R.T.: -0.002 min
 Response: 961480104
 Conc: 729.61 ng/ml



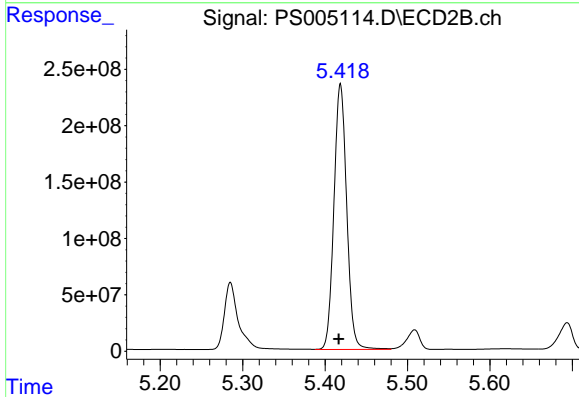
#4 2,4-DCAA

R.T.: 5.285 min
 Delta R.T.: 0.000 min
 Response: 701120007
 Conc: 702.85 ng/ml

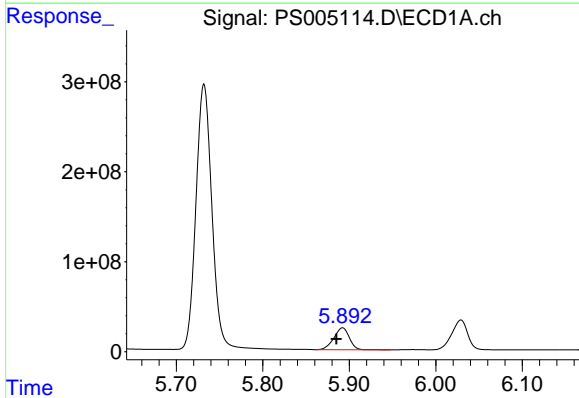


#5 DICAMBA
R.T.: 5.732 min
Delta R.T.: 0.001 min
Response: 3789095535
Conc: 669.48 ng/ml

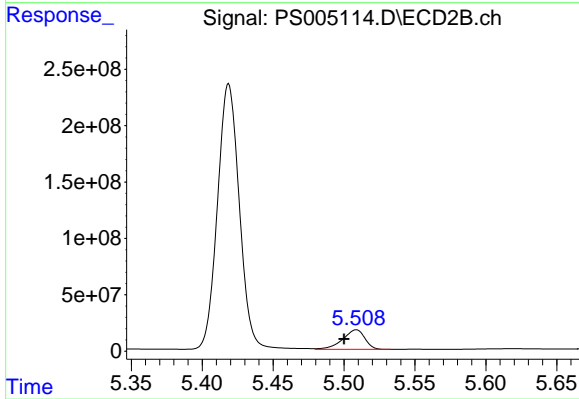
Instrument :
ECD_S
ClientSampleId :
HSTDCCC750



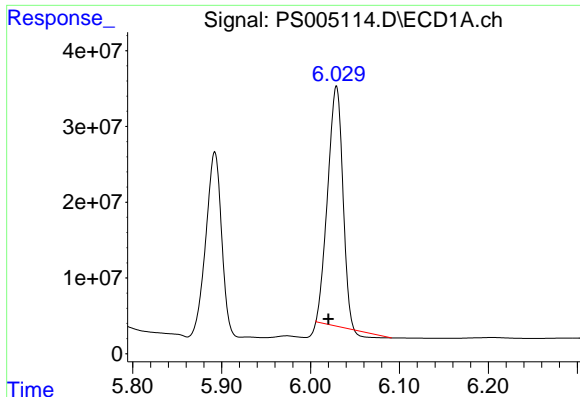
#5 DICAMBA
R.T.: 5.419 min
Delta R.T.: 0.002 min
Response: 2535552094
Conc: 660.21 ng/ml



#6 MCP
R.T.: 5.892 min
Delta R.T.: 0.007 min
Response: 301838641
Conc: 67.67 ug/ml



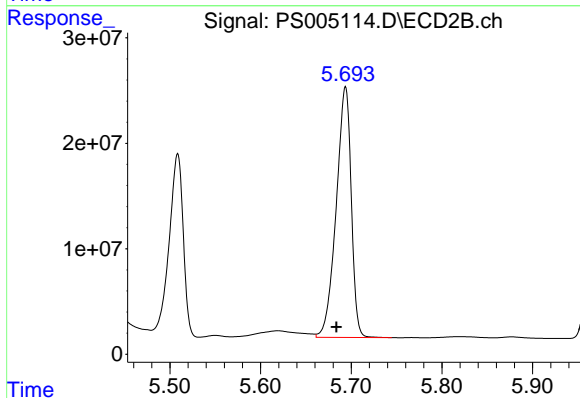
#6 MCP
R.T.: 5.508 min
Delta R.T.: 0.008 min
Response: 190846837
Conc: 66.05 ug/ml



#7 MCPA

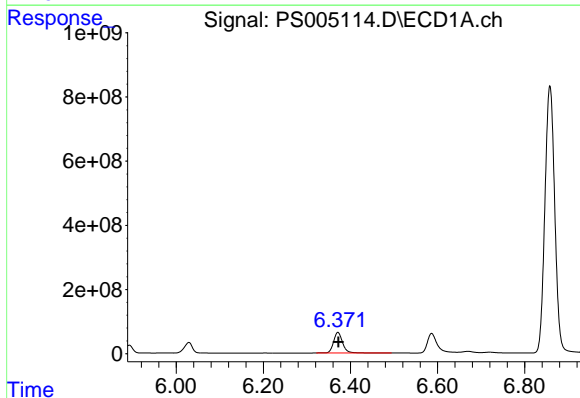
R.T.: 6.029 min
 Delta R.T.: 0.009 min
 Response: 364339239
 Conc: 58.14 ug/ml

Instrument :
 ECD_S
 ClientSampleId :
 HSTDCCC750



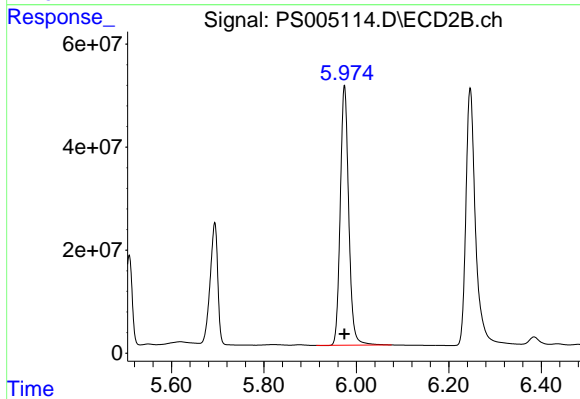
#7 MCPA

R.T.: 5.693 min
 Delta R.T.: 0.010 min
 Response: 273583685
 Conc: 64.90 ug/ml



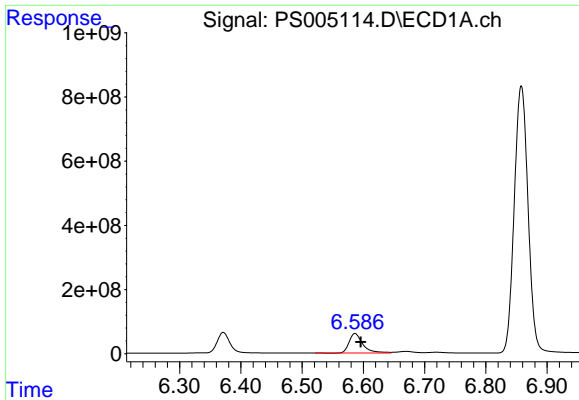
#8 DICHLORPROP

R.T.: 6.371 min
 Delta R.T.: -0.001 min
 Response: 920602870
 Conc: 658.03 ng/ml



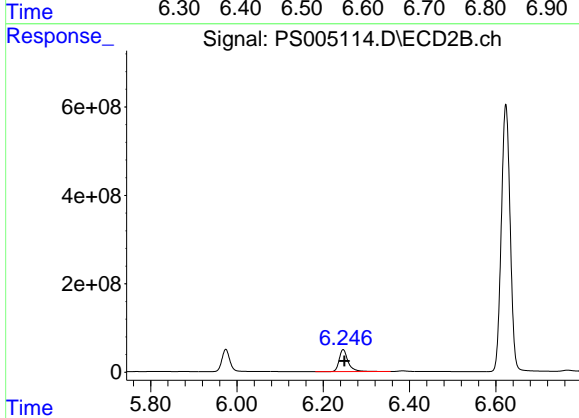
#8 DICHLORPROP

R.T.: 5.974 min
 Delta R.T.: 0.000 min
 Response: 640364270
 Conc: 659.34 ng/ml

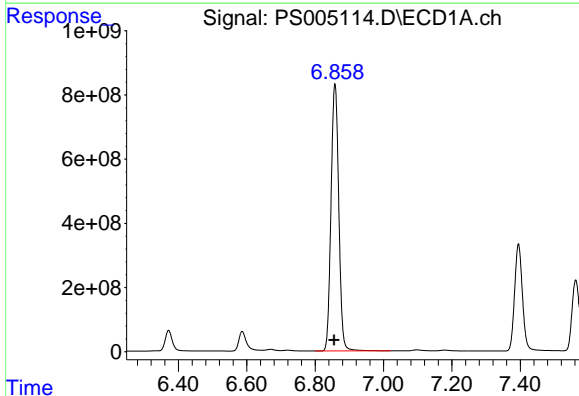


#9 2,4-D
 R.T.: 6.586 min
 Delta R.T.: -0.009 min
 Response: 953530092
 Conc: 706.66 ng/ml

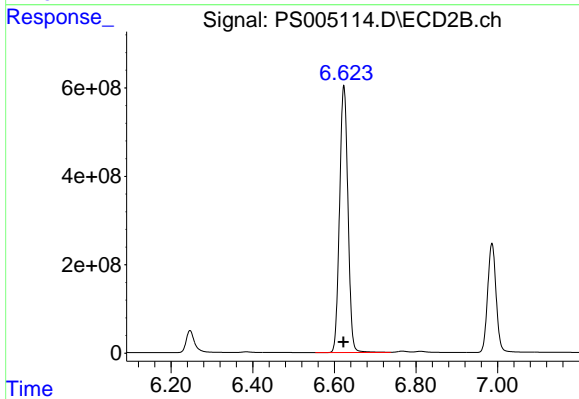
Instrument :
 ECD_S
ClientSampleId :
 HSTDCCC750



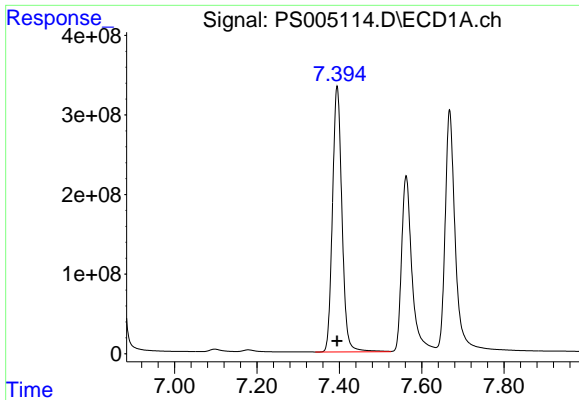
#9 2,4-D
 R.T.: 6.246 min
 Delta R.T.: -0.003 min
 Response: 717830966
 Conc: 670.76 ng/ml



#10 Pentachlorophenol
 R.T.: 6.858 min
 Delta R.T.: 0.002 min
 Response: 13066886854
 Conc: 679.24 ng/ml



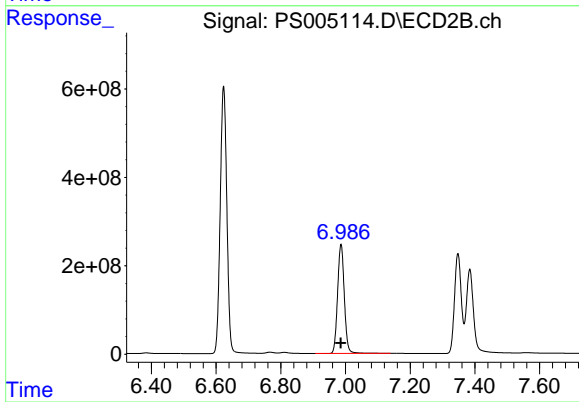
#10 Pentachlorophenol
 R.T.: 6.623 min
 Delta R.T.: 0.002 min
 Response: 8612049911
 Conc: 668.43 ng/ml



#11 2,4,5-TP (SILVEX)

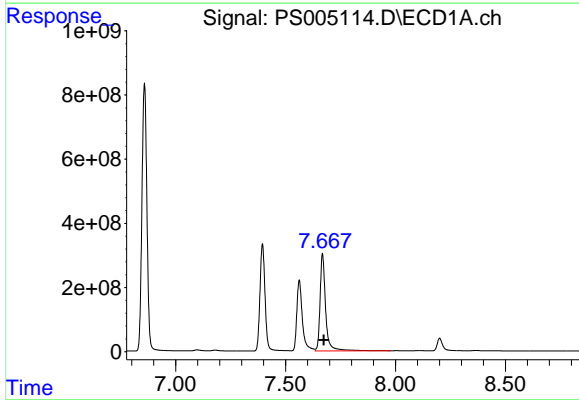
R.T.: 7.395 min
 Delta R.T.: 0.000 min
 Response: 5346279207
 Conc: 680.44 ng/ml

Instrument :
 ECD_S
 ClientSampleId :
 HSTDCCC750



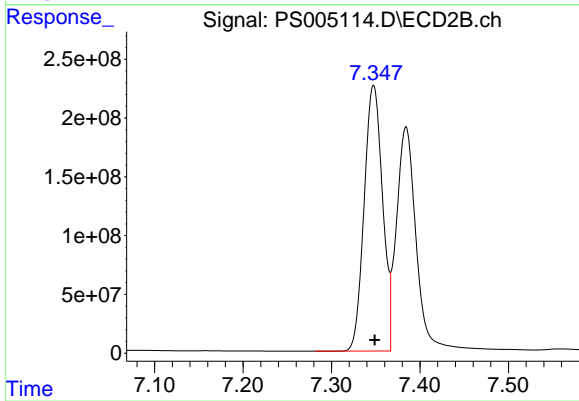
#11 2,4,5-TP (SILVEX)

R.T.: 6.986 min
 Delta R.T.: 0.000 min
 Response: 3564187598
 Conc: 665.87 ng/ml



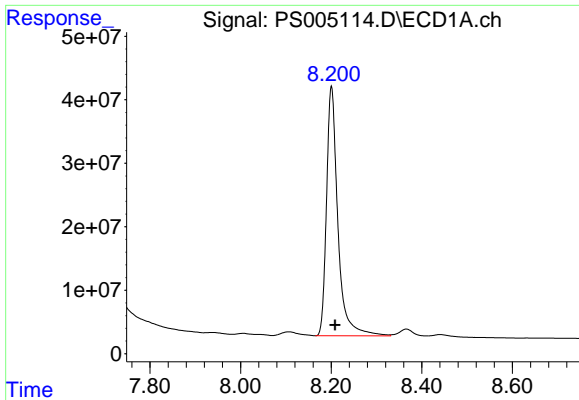
#12 2,4,5-T

R.T.: 7.668 min
 Delta R.T.: -0.006 min
 Response: 5305015135
 Conc: 663.92 ng/ml



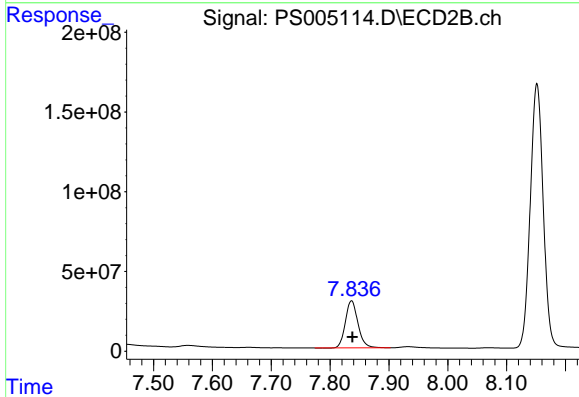
#12 2,4,5-T

R.T.: 7.348 min
 Delta R.T.: -0.001 min
 Response: 3264160320
 Conc: 692.05 ng/ml

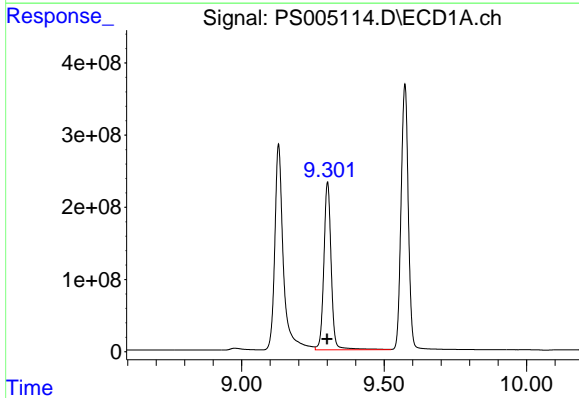


#13 2,4-DB
 R.T.: 8.201 min
 Delta R.T.: -0.008 min
 Response: 684827319
 Conc: 746.01 ng/ml

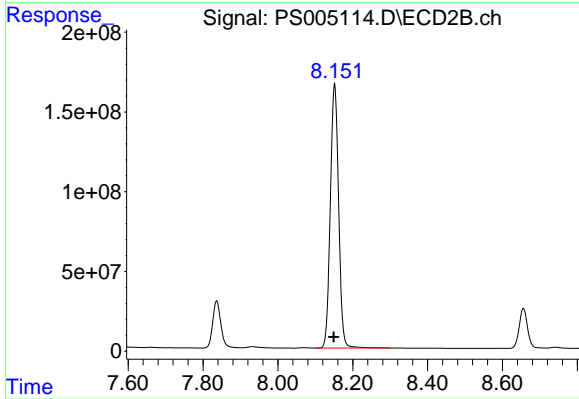
Instrument :
 ECD_S
ClientSampleId :
 HSTDCCC750



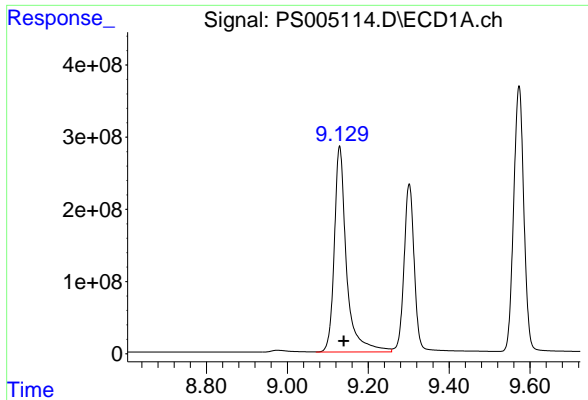
#13 2,4-DB
 R.T.: 7.836 min
 Delta R.T.: -0.002 min
 Response: 439667974
 Conc: 692.78 ng/ml



#14 DINOSEB
 R.T.: 9.301 min
 Delta R.T.: 0.002 min
 Response: 4177525311
 Conc: 637.08 ng/ml

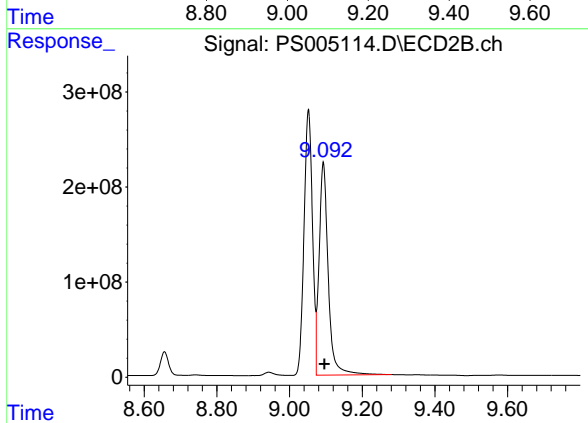


#14 DINOSEB
 R.T.: 8.152 min
 Delta R.T.: 0.002 min
 Response: 2544225013
 Conc: 654.96 ng/ml

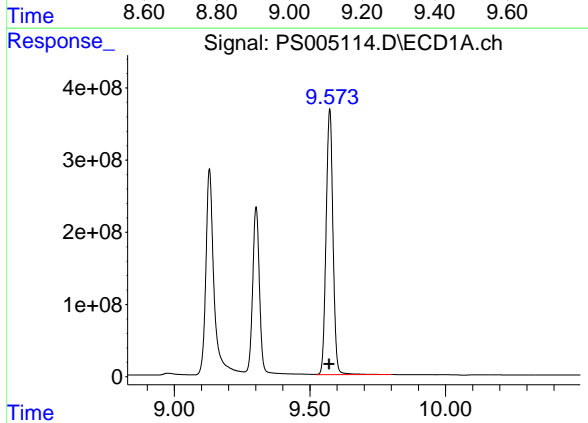


#15 Picloram
 R.T.: 9.129 min
 Delta R.T.: -0.010 min
 Response: 5978667142
 Conc: 602.20 ng/ml

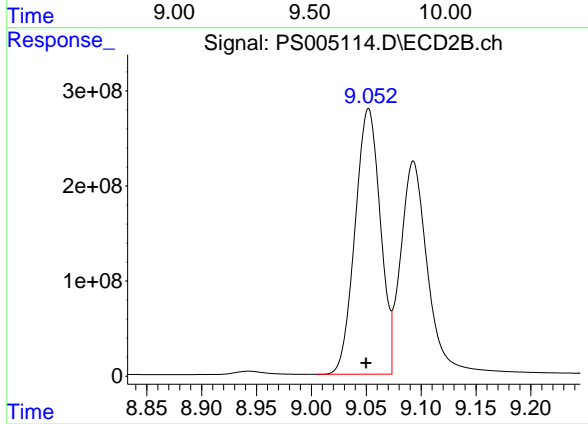
Instrument :
 ECD_S
 ClientSampleId :
 HSTDCCC750



#15 Picloram
 R.T.: 9.093 min
 Delta R.T.: -0.003 min
 Response: 3898986809
 Conc: 571.60 ng/ml



#16 DCPA
 R.T.: 9.573 min
 Delta R.T.: 0.002 min
 Response: 6493600680
 Conc: 668.79 ng/ml



#16 DCPA
 R.T.: 9.052 min
 Delta R.T.: 0.002 min
 Response: 4480499775
 Conc: 679.43 ng/ml