

Data Path : Z:\pestpcbsrv\HPCHEM1\ECD\_S\Data\PS061821\  
 Data File : PS015796.D  
 Signal(s) : Signal #1: ECD1A.ch Signal #2: ECD2B.ch  
 Acq On : 19 Jun 2021 00:48  
 Operator : DD\AJ  
 Sample : M2672-17  
 Misc :  
 ALS Vial : 30 Sample Multiplier: 1

Integration File signal 1: autoint1.e  
 Integration File signal 2: autoint2.e  
 Quant Time: Jun 19 02:12:50 2021  
 Quant Method : Z:\pestpcbsrv\HPCHEM1\ECD\_S\Method\PS061521.M  
 Quant Title : 8080.M  
 QLast Update : Tue Jun 15 18:15:49 2021  
 Response via : Initial Calibration  
 Integrator: ChemStation

Volume Inj. : 2 µl  
 Signal #1 Phase : Rtx-CLPesticides Signal #2 Phase: Rtx-CLPesticides2  
 Signal #1 Info : 30M x 0.32mm x0.5 Signal #2 Info : 30M x 0.32mm x 0.25µm

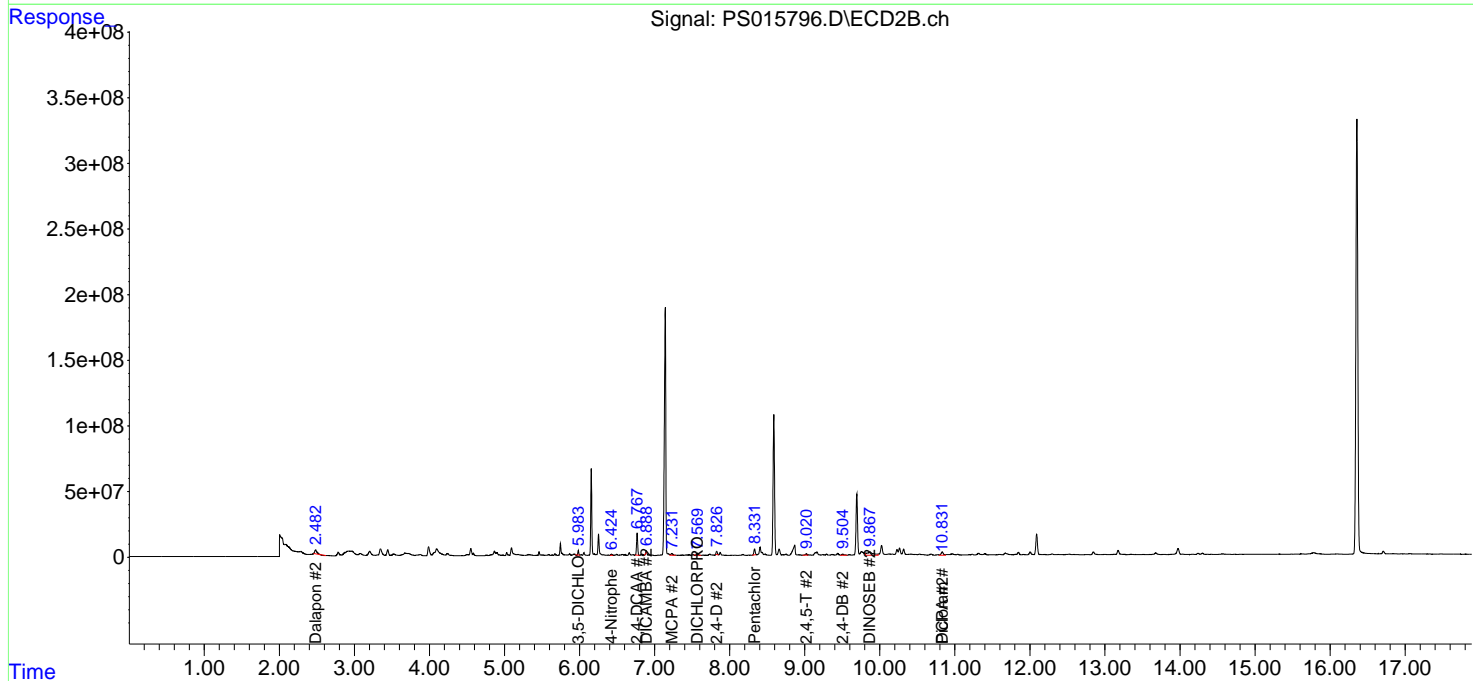
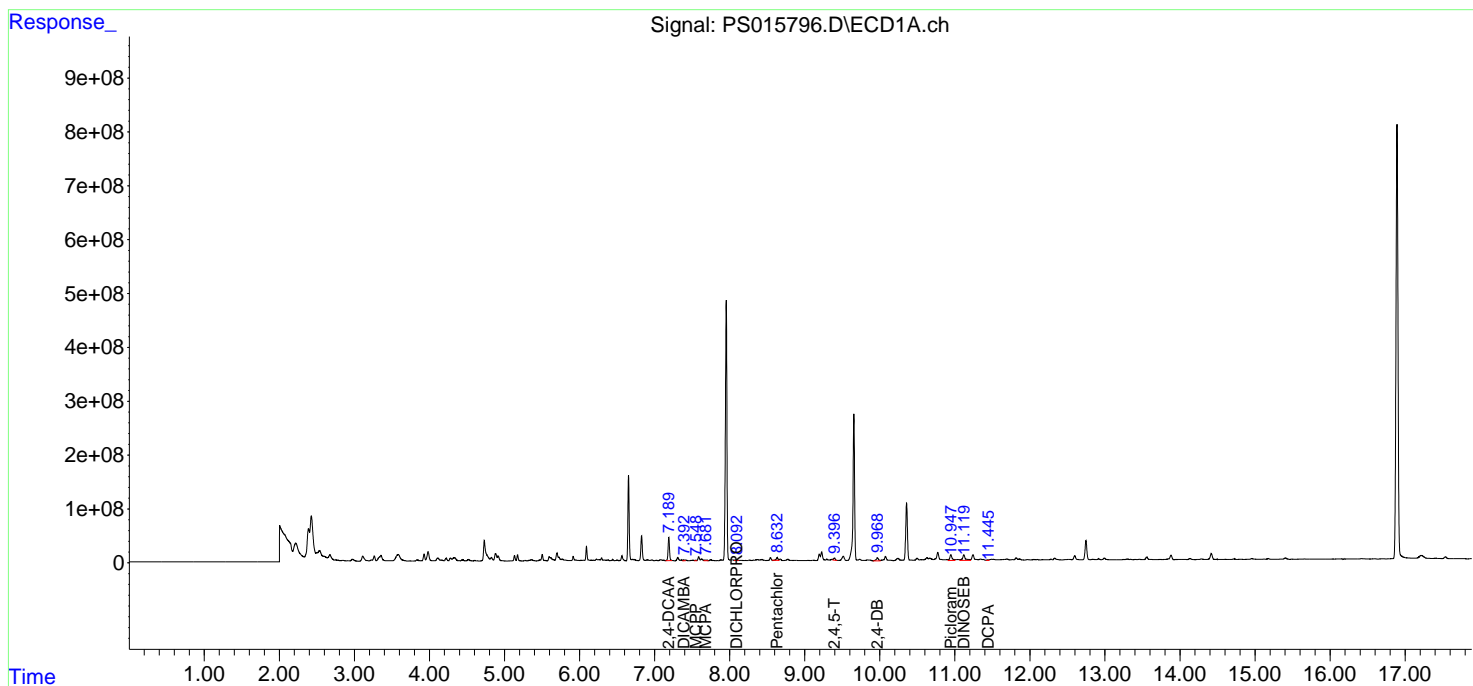
	Compound	RT#1	RT#2	Resp#1	Resp#2	ng/ml	ng/ml
-----							
System Monitoring Compounds							
4) S	2,4-DCAA	7.190	6.767	570.4E6	178.9E6	343.291	355.018
Target Compounds							
1) T	Dalapon	0.000	2.482	0	55260046	N.D.	85.083
2) T	3,5-DICHL...	6.442	5.983	1830795	27192696	<MDL	36.057 #
3) T	4-Nitroph...	7.025	6.425	-9155815	10878734	N.D.	35.559
5) T	DICAMBA	7.392	6.889f	25976609	8578583	4.041	4.134
6) T	MCP P	7.548	0.000	11460368	0	2.110	N.D. #
7) T	MCPA	7.681	7.232	29938705	25604258	3.824	9.981 #
8) T	DICHLORPROP	8.092	7.570	28743021	18942105	18.153	36.586 #
9) T	2,4-D	8.318	7.826	-4234772	29033098	N.D.	46.806
10) T	Pentachlo...	8.633	8.331f	84971647	55914143	3.937	7.961 #
12) T	2,4,5-T	9.396f	9.020	64220831	15530487	7.274	5.506
13) T	2,4-DB	9.969	9.504	118.9E6	15926959	58.123	42.644 #
14) T	DINOSEB	11.120f	9.867	284.2E6	145.0E6	43.886	71.988 #
15) T	Picloram	10.947	10.831	234.5E6	53319236	17.157	12.678 #
16) T	DCPA	11.446	10.831f	18215608	53319236	1.377	12.682 #
-----							

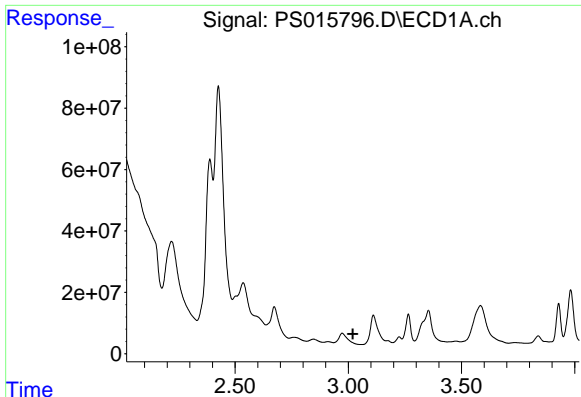
(f)=RT Delta > 1/2 Window (#)=Amounts differ by > 25% (m)=manual int.

Data Path : Z:\pestpcbsrv\HPCHEM1\ECD\_S\Data\PS061821\  
 Data File : PS015796.D  
 Signal(s) : Signal #1: ECD1A.ch Signal #2: ECD2B.ch  
 Acq On : 19 Jun 2021 00:48  
 Operator : DD\AJ  
 Sample : M2672-17  
 Misc :  
 ALS Vial : 30 Sample Multiplier: 1

Integration File signal 1: autoint1.e  
 Integration File signal 2: autoint2.e  
 Quant Time: Jun 19 02:12:50 2021  
 Quant Method : Z:\pestpcbsrv\HPCHEM1\ECD\_S\Method\PS061521.M  
 Quant Title : 8080.M  
 QLast Update : Tue Jun 15 18:15:49 2021  
 Response via : Initial Calibration  
 Integrator: ChemStation

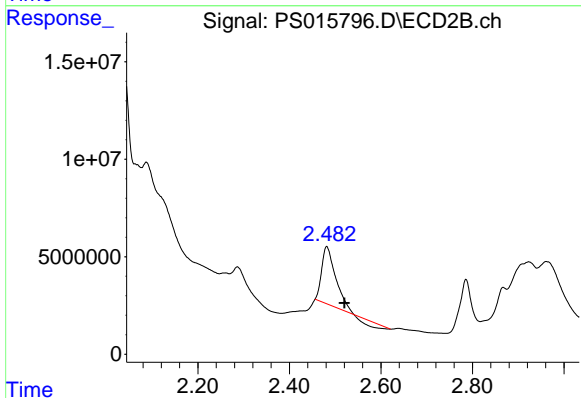
Volume Inj. : 2 µl  
 Signal #1 Phase : Rtx-CLPesticides Signal #2 Phase: Rtx-CLPesticides2  
 Signal #1 Info : 30M x 0.32mm x0.5 Signal #2 Info : 30M x 0.32mm x 0.25µm





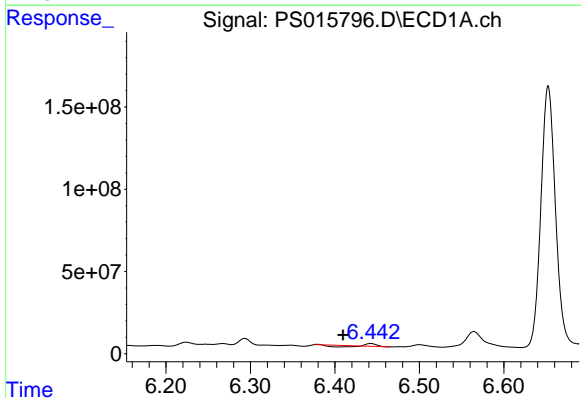
#1 Dalapon

R.T.: 0.000 min  
 Exp R.T. : 3.020 min  
 Response: 0  
 Conc: N.D.



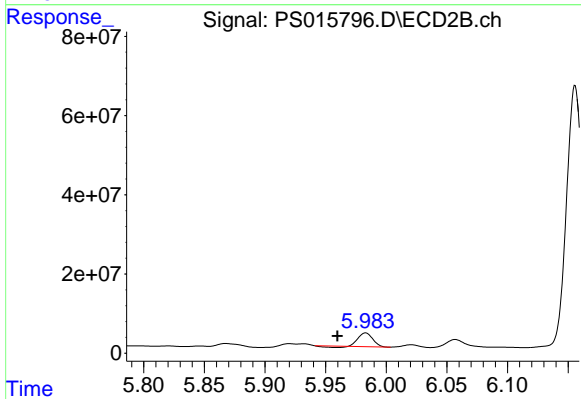
#1 Dalapon

R.T.: 2.482 min  
 Delta R.T.: -0.039 min  
 Response: 55260046  
 Conc: 85.08 ng/ml



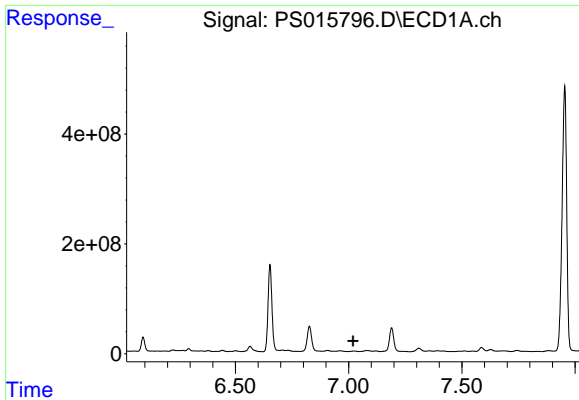
#2 3,5-DICHLOROBENZOIC ACID

R.T.: 6.442 min  
 Delta R.T.: 0.033 min  
 Response: 1830795  
 Conc: N.D.

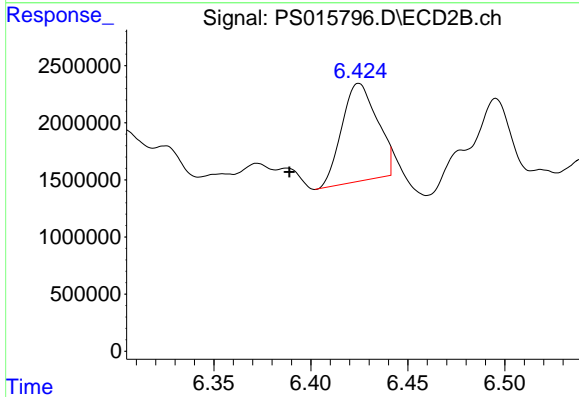


#2 3,5-DICHLOROBENZOIC ACID

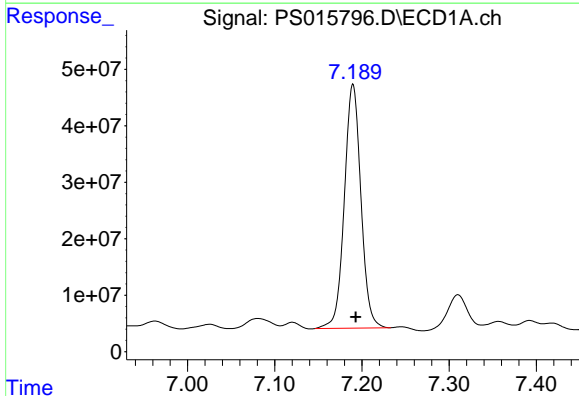
R.T.: 5.983 min  
 Delta R.T.: 0.023 min  
 Response: 27192696  
 Conc: 36.06 ng/ml



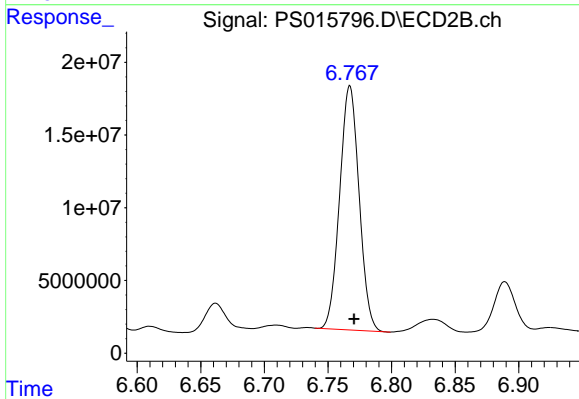
#3 4-Nitrophenol  
R.T.: 7.025 min  
Delta R.T.: 0.006 min  
Response: -9155815  
Conc: N.D.



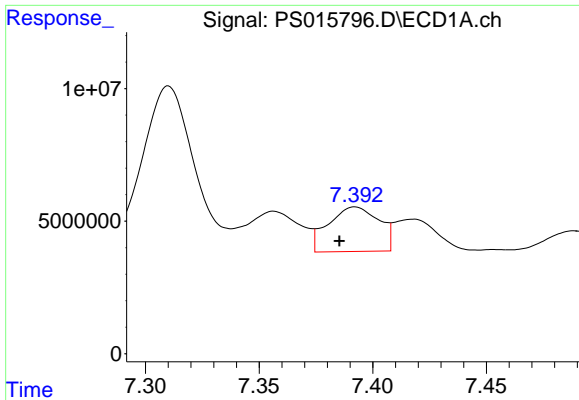
#3 4-Nitrophenol  
R.T.: 6.425 min  
Delta R.T.: 0.036 min  
Response: 10878734  
Conc: 35.56 ng/ml



#4 2,4-DCAA  
R.T.: 7.190 min  
Delta R.T.: -0.003 min  
Response: 570360550  
Conc: 343.29 ng/ml

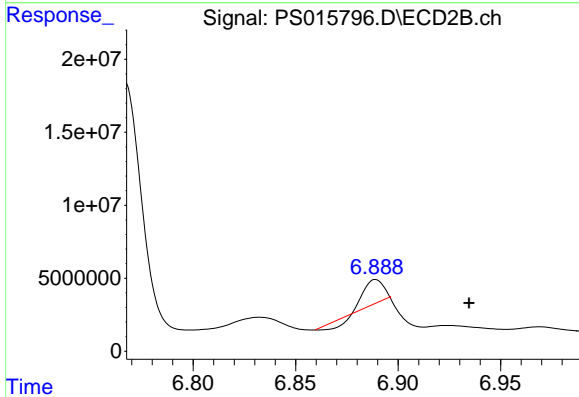


#4 2,4-DCAA  
R.T.: 6.767 min  
Delta R.T.: -0.003 min  
Response: 178876529  
Conc: 355.02 ng/ml



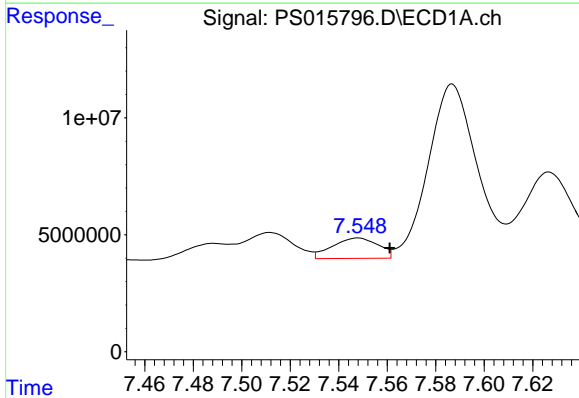
#5 DICAMBA

R.T.: 7.392 min  
 Delta R.T.: 0.007 min  
 Response: 25976609  
 Conc: 4.04 ng/ml



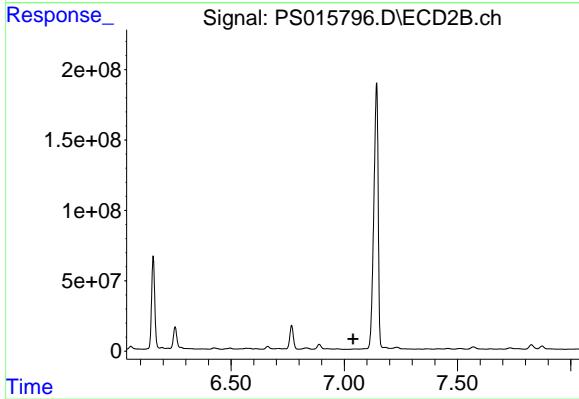
#5 DICAMBA

R.T.: 6.889 min  
 Delta R.T.: -0.045 min  
 Response: 8578583  
 Conc: 4.13 ng/ml



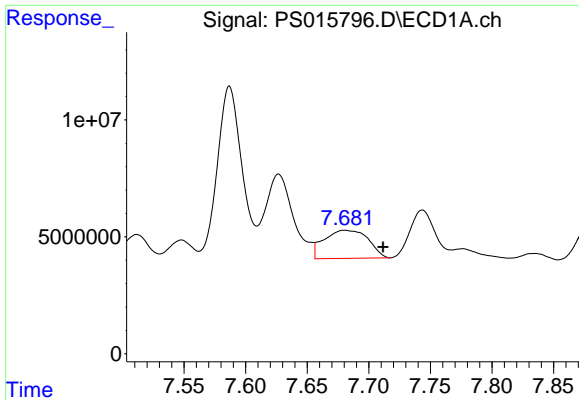
#6 MCP

R.T.: 7.548 min  
 Delta R.T.: -0.013 min  
 Response: 11460368  
 Conc: 2.11 ug/ml



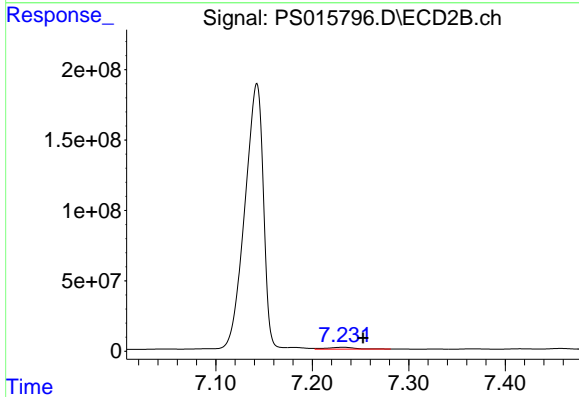
#6 MCP

R.T.: 0.000 min  
 Exp R.T.: 7.038 min  
 Response: 0  
 Conc: N.D.



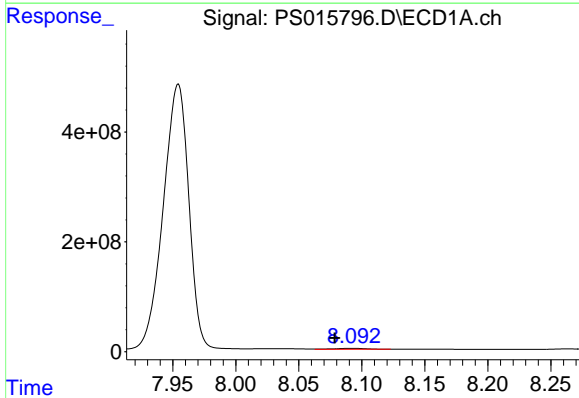
#7 MCPA

R.T.: 7.681 min  
 Delta R.T.: -0.031 min  
 Response: 29938705  
 Conc: 3.82 ug/ml



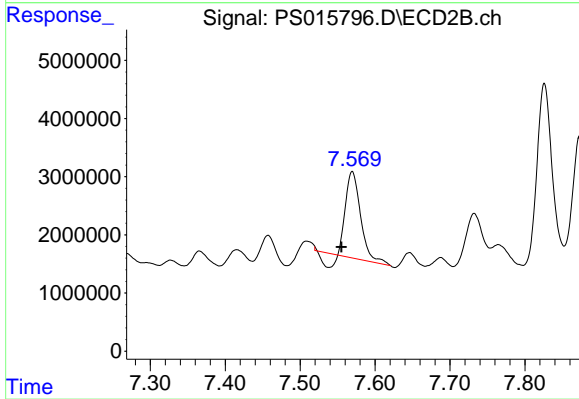
#7 MCPA

R.T.: 7.232 min  
 Delta R.T.: -0.021 min  
 Response: 25604258  
 Conc: 9.98 ug/ml



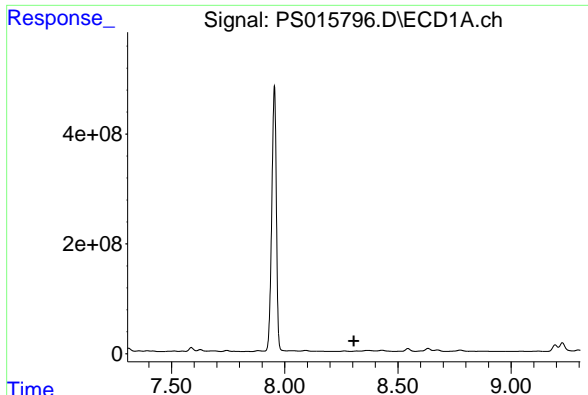
#8 DICHLORPROP

R.T.: 8.092 min  
 Delta R.T.: 0.014 min  
 Response: 28743021  
 Conc: 18.15 ng/ml



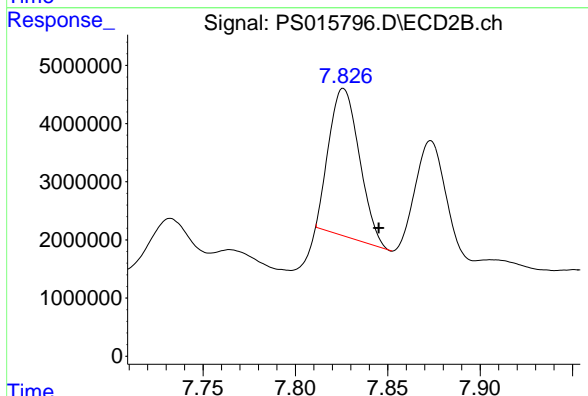
#8 DICHLORPROP

R.T.: 7.570 min  
 Delta R.T.: 0.014 min  
 Response: 18942105  
 Conc: 36.59 ng/ml



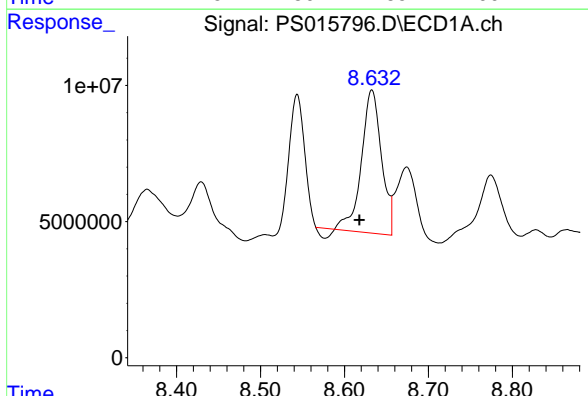
#9 2,4-D

R.T.: 8.318 min  
Delta R.T.: 0.013 min  
Response: -4234772  
Conc: N.D.



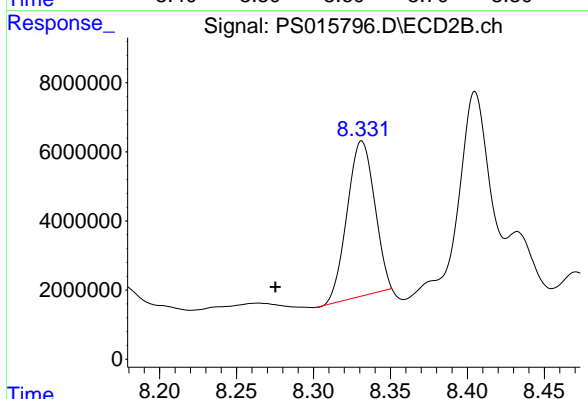
#9 2,4-D

R.T.: 7.826 min  
Delta R.T.: -0.019 min  
Response: 29033098  
Conc: 46.81 ng/ml



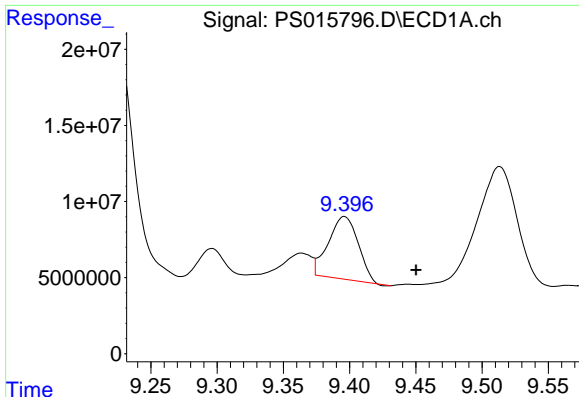
#10 Pentachlorophenol

R.T.: 8.633 min  
Delta R.T.: 0.015 min  
Response: 84971647  
Conc: 3.94 ng/ml



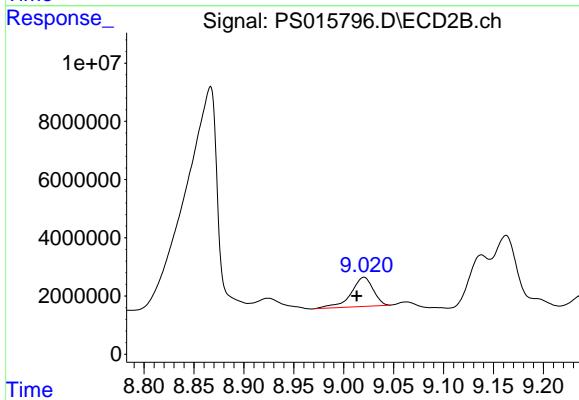
#10 Pentachlorophenol

R.T.: 8.331 min  
Delta R.T.: 0.056 min  
Response: 55914143  
Conc: 7.96 ng/ml



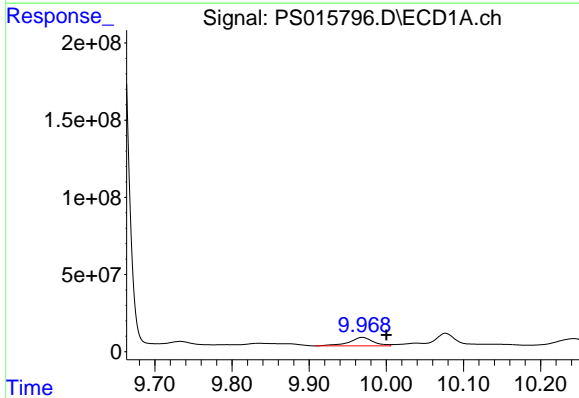
#12 2,4,5-T

R.T.: 9.396 min  
 Delta R.T.: -0.054 min  
 Response: 64220831  
 Conc: 7.27 ng/ml



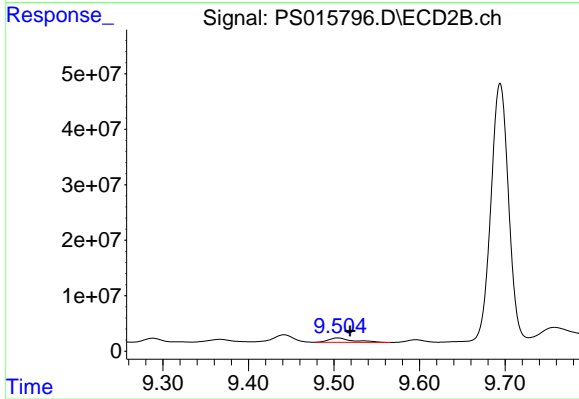
#12 2,4,5-T

R.T.: 9.020 min  
 Delta R.T.: 0.007 min  
 Response: 15530487  
 Conc: 5.51 ng/ml



#13 2,4-DB

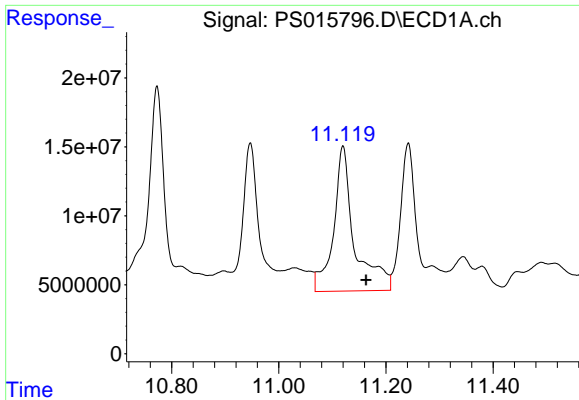
R.T.: 9.969 min  
 Delta R.T.: -0.031 min  
 Response: 118892217  
 Conc: 58.12 ng/ml



#13 2,4-DB

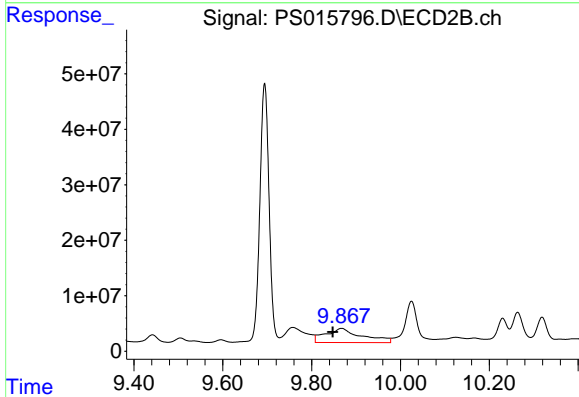
R.T.: 9.504 min  
 Delta R.T.: -0.014 min  
 Response: 15926959  
 Conc: 42.64 ng/ml





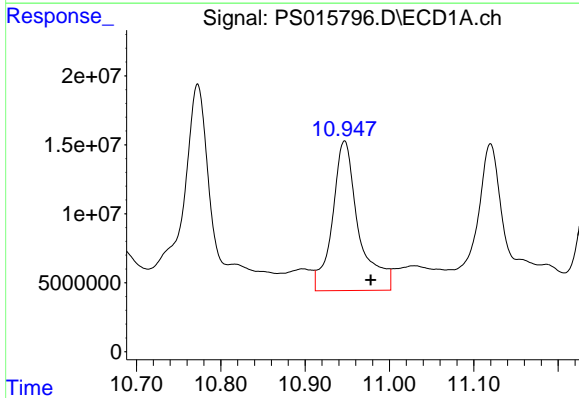
#14 DINOSEB

R.T.: 11.120 min  
 Delta R.T.: -0.044 min  
 Response: 284229911  
 Conc: 43.89 ng/ml



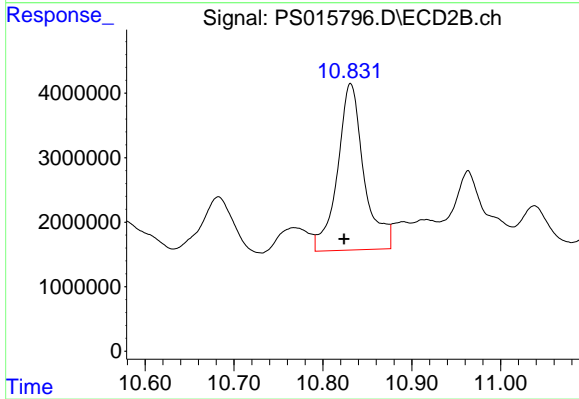
#14 DINOSEB

R.T.: 9.867 min  
 Delta R.T.: 0.020 min  
 Response: 144993728  
 Conc: 71.99 ng/ml



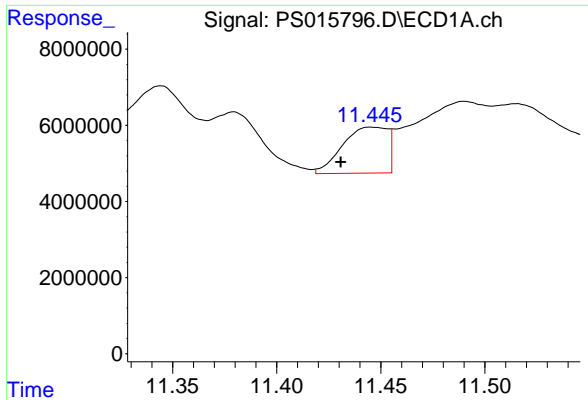
#15 Picloram

R.T.: 10.947 min  
 Delta R.T.: -0.031 min  
 Response: 234546434  
 Conc: 17.16 ng/ml



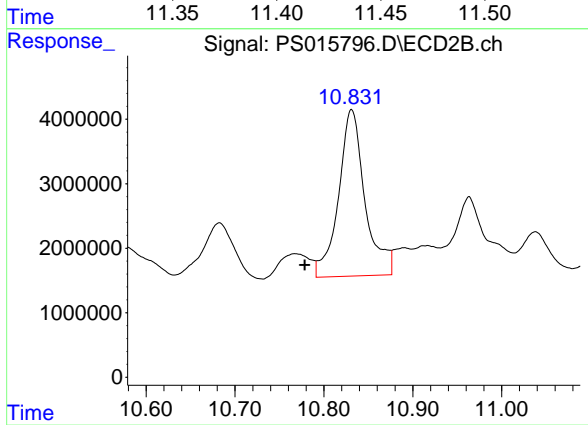
#15 Picloram

R.T.: 10.831 min  
 Delta R.T.: 0.007 min  
 Response: 53319236  
 Conc: 12.68 ng/ml



#16 DCPA

R.T.: 11.446 min  
Delta R.T.: 0.016 min  
Response: 18215608  
Conc: 1.38 ng/ml



#16 DCPA

R.T.: 10.831 min  
Delta R.T.: 0.053 min  
Response: 53319236  
Conc: 12.68 ng/ml