

Data Path : Z:\pestpcbsrv\HPCHEM1\ECD_S\Data\PS061821\
 Data File : PS015797.D
 Signal(s) : Signal #1: ECD1A.ch Signal #2: ECD2B.ch
 Acq On : 19 Jun 2021 01:12
 Operator : DD\AJ
 Sample : M2672-18
 Misc :
 ALS Vial : 31 Sample Multiplier: 1

Integration File signal 1: autoint1.e
 Integration File signal 2: autoint2.e
 Quant Time: Jun 19 02:13:07 2021
 Quant Method : Z:\pestpcbsrv\HPCHEM1\ECD_S\Method\PS061521.M
 Quant Title : 8080.M
 QLast Update : Tue Jun 15 18:15:49 2021
 Response via : Initial Calibration
 Integrator: ChemStation

Volume Inj. : 2 µl
 Signal #1 Phase : Rtx-CLPesticides Signal #2 Phase: Rtx-CLPesticides2
 Signal #1 Info : 30M x 0.32mm x0.5 Signal #2 Info : 30M x 0.32mm x 0.25µm

Compound	RT#1	RT#2	Resp#1	Resp#2	ng/ml	ng/ml

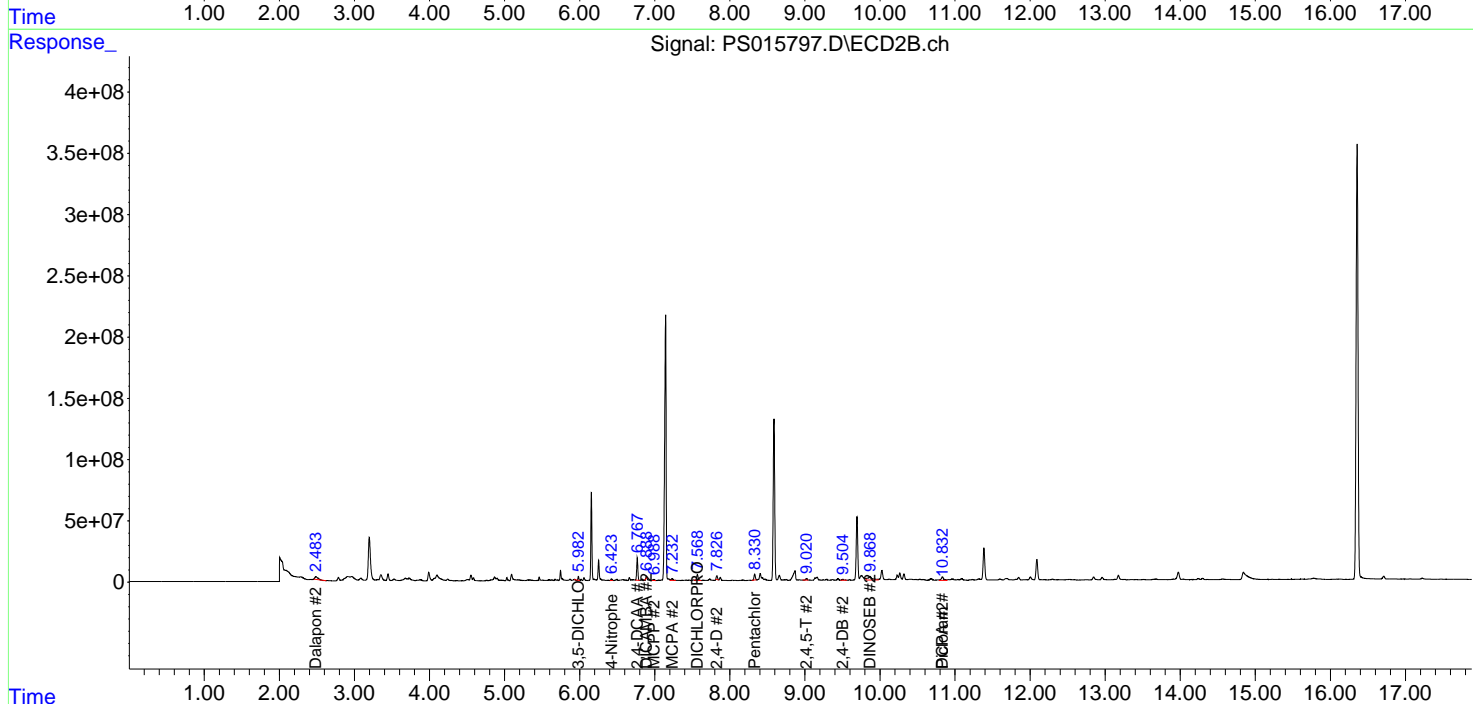
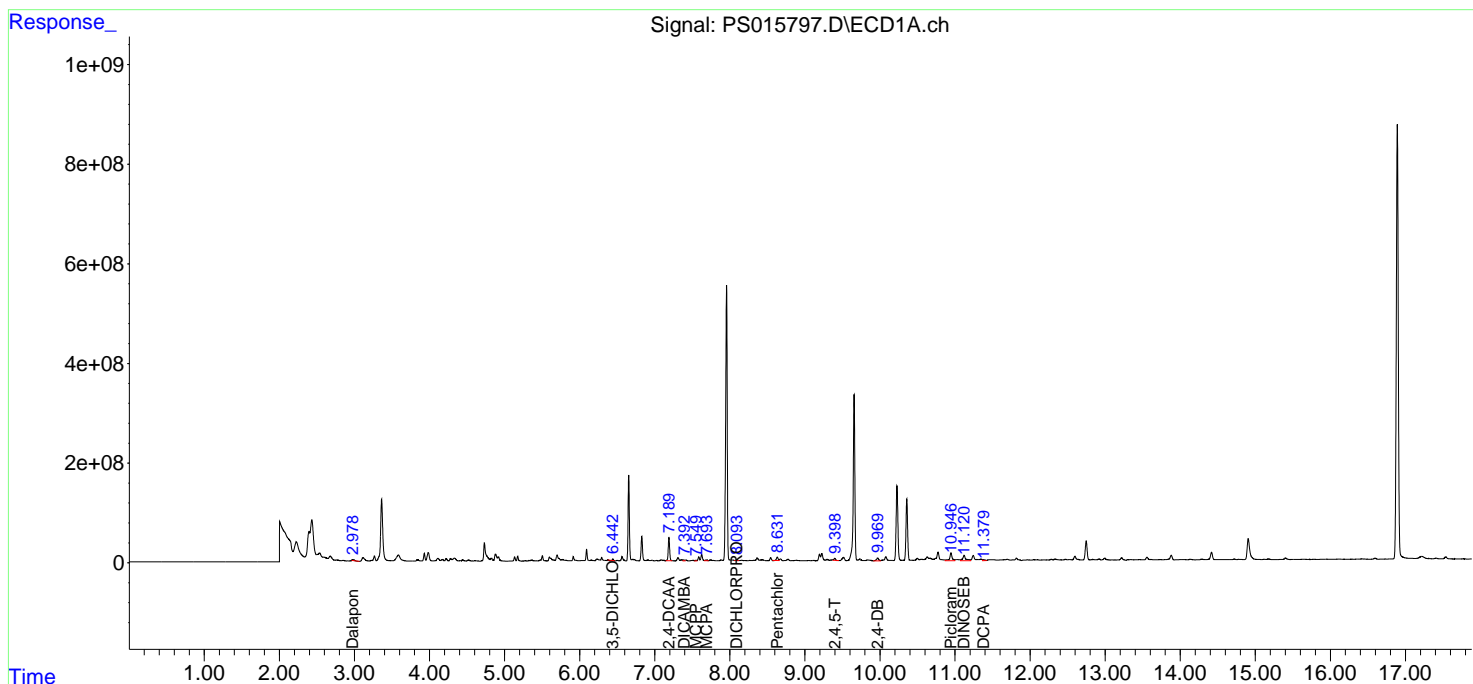
System Monitoring Compounds						
4) S 2,4-DCAA	7.189	6.767	616.9E6	195.4E6	371.310	387.817
Target Compounds						
1) T Dalapon	2.977f	2.483	27846445	58824834	13.797	90.572 #
2) T 3,5-DICHL...	6.442	5.983	15982855	19191121	7.121	25.447 #
3) T 4-Nitroph...	7.025	6.424	-8670236	16012208	N.D.	52.339
5) T DICAMBA	7.392	6.889f	27790577	11170409	4.323	5.383
6) T MCPP	7.549	6.988f	13895191	11769647	2.559	7.061 #
7) T MCPA	7.692	7.232	31396667	25437510	4.011	9.916 #
8) T DICHLORPROP	8.093	7.569	32052505	56982928	20.243	110.060 #
9) T 2,4-D	8.319	7.826	-1806195	36005893	N.D.	58.047
10) T Pentachlo...	8.632	8.331f	102.9E6	58082717	4.770	8.270 #
12) T 2,4,5-T	9.398f	9.020	55398256	17936844	6.275	6.360
13) T 2,4-DB	9.969	9.505	128.2E6	15695435	62.664	42.024 #
14) T DINOSEB	11.120f	9.868	309.4E6	125.2E6	47.770	62.139 #
15) T Picloram	10.946	10.833	361.9E6	64704452	26.474	15.385 #
16) T DCPA	11.378f	10.833f	39851886	64704452	3.013	15.390 #

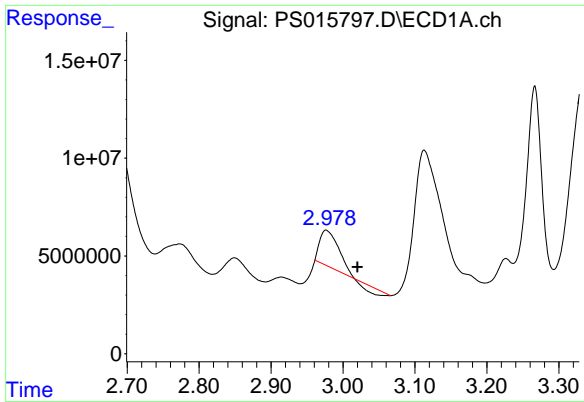
(f)=RT Delta > 1/2 Window (#)=Amounts differ by > 25% (m)=manual int.

Data Path : Z:\pestpcbsrv\HPCHEM1\ECD_S\Data\PS061821\
 Data File : PS015797.D
 Signal(s) : Signal #1: ECD1A.ch Signal #2: ECD2B.ch
 Acq On : 19 Jun 2021 01:12
 Operator : DD\AJ
 Sample : M2672-18
 Misc :
 ALS Vial : 31 Sample Multiplier: 1

Integration File signal 1: autoint1.e
 Integration File signal 2: autoint2.e
 Quant Time: Jun 19 02:13:07 2021
 Quant Method : Z:\pestpcbsrv\HPCHEM1\ECD_S\Method\PS061521.M
 Quant Title : 8080.M
 QLast Update : Tue Jun 15 18:15:49 2021
 Response via : Initial Calibration
 Integrator: ChemStation

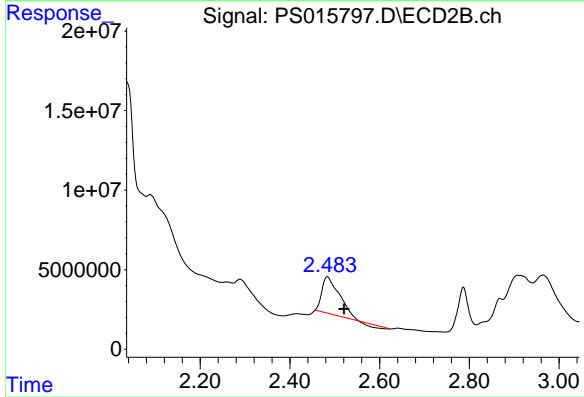
Volume Inj. : 2 µl
 Signal #1 Phase : Rtx-CLPesticides Signal #2 Phase: Rtx-CLPesticides2
 Signal #1 Info : 30M x 0.32mm x0.5 Signal #2 Info : 30M x 0.32mm x 0.25µm





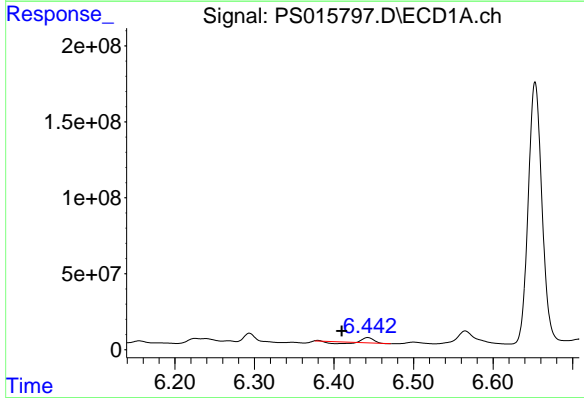
#1 Dalapon

R.T.: 2.977 min
 Delta R.T.: -0.043 min
 Response: 27846445
 Conc: 13.80 ng/ml



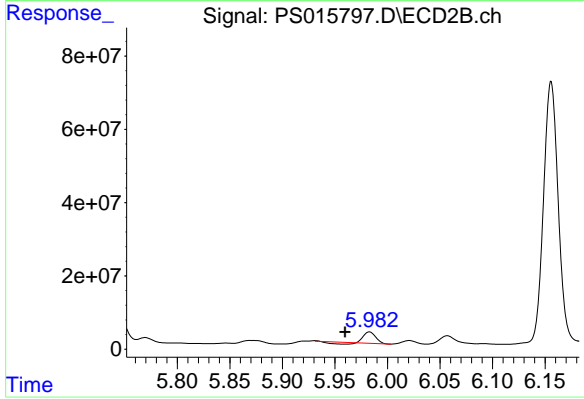
#1 Dalapon

R.T.: 2.483 min
 Delta R.T.: -0.037 min
 Response: 58824834
 Conc: 90.57 ng/ml



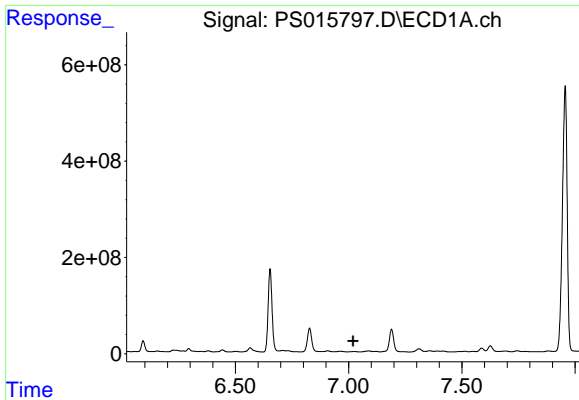
#2 3,5-DICHLOROBENZOIC ACID

R.T.: 6.442 min
 Delta R.T.: 0.033 min
 Response: 15982855
 Conc: 7.12 ng/ml

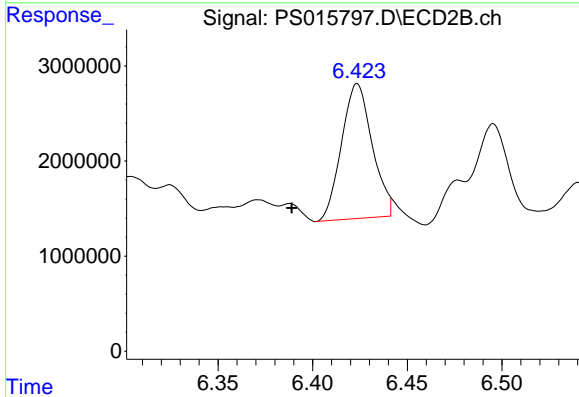


#2 3,5-DICHLOROBENZOIC ACID

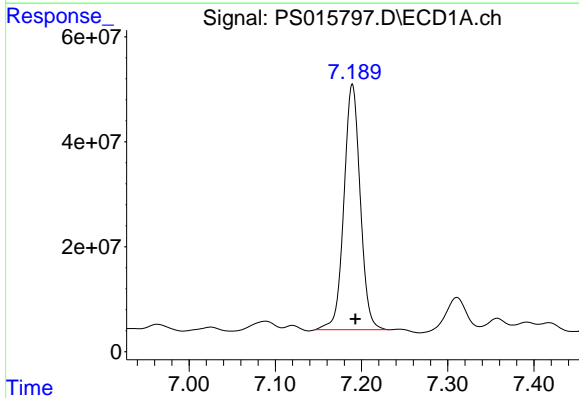
R.T.: 5.983 min
 Delta R.T.: 0.023 min
 Response: 19191121
 Conc: 25.45 ng/ml



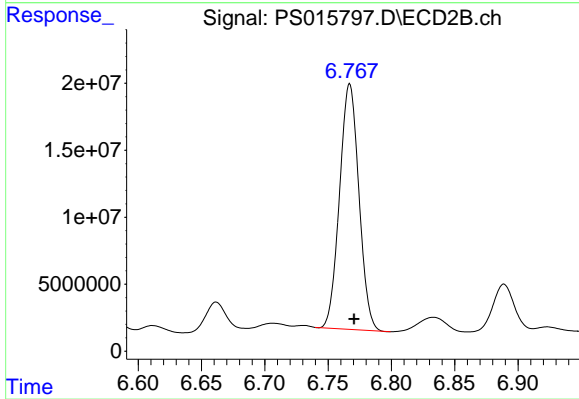
#3 4-Nitrophenol
R.T.: 7.025 min
Delta R.T.: 0.006 min
Response: -8670236
Conc: N.D.



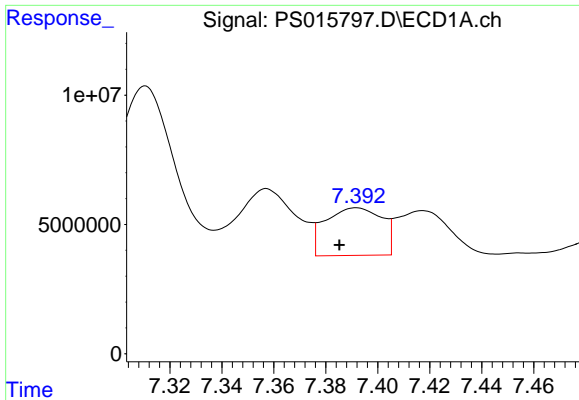
#3 4-Nitrophenol
R.T.: 6.424 min
Delta R.T.: 0.035 min
Response: 16012208
Conc: 52.34 ng/ml



#4 2,4-DCAA
R.T.: 7.189 min
Delta R.T.: -0.003 min
Response: 616912679
Conc: 371.31 ng/ml

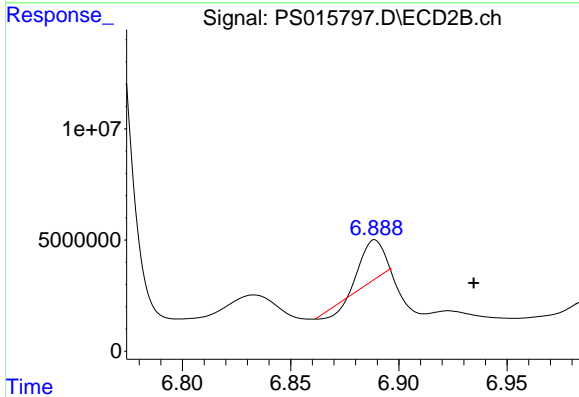


#4 2,4-DCAA
R.T.: 6.767 min
Delta R.T.: -0.003 min
Response: 195402583
Conc: 387.82 ng/ml



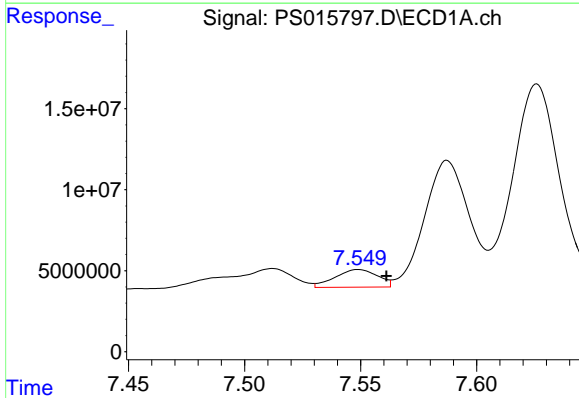
#5 DICAMBA

R.T.: 7.392 min
 Delta R.T.: 0.007 min
 Response: 27790577
 Conc: 4.32 ng/ml



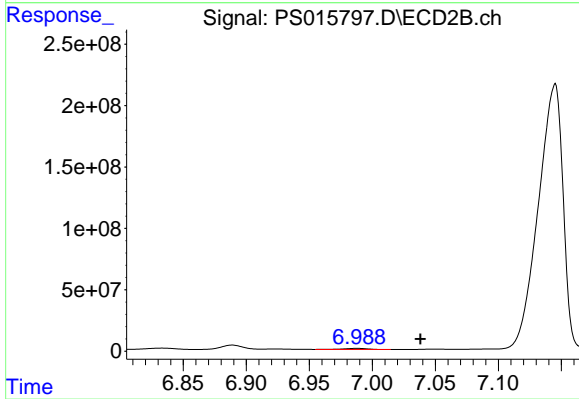
#5 DICAMBA

R.T.: 6.889 min
 Delta R.T.: -0.046 min
 Response: 11170409
 Conc: 5.38 ng/ml



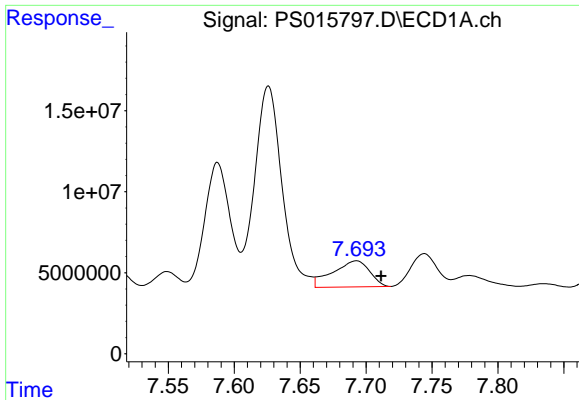
#6 MCP

R.T.: 7.549 min
 Delta R.T.: -0.012 min
 Response: 13895191
 Conc: 2.56 ug/ml

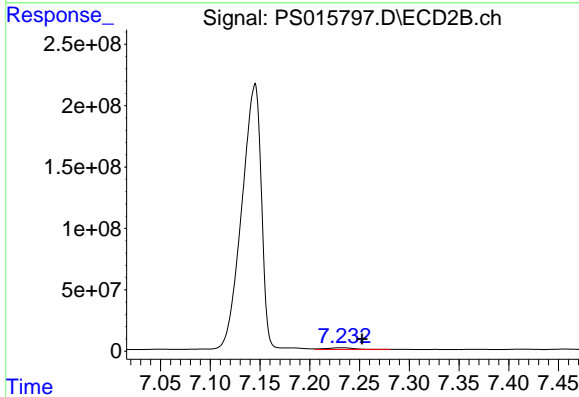


#6 MCP

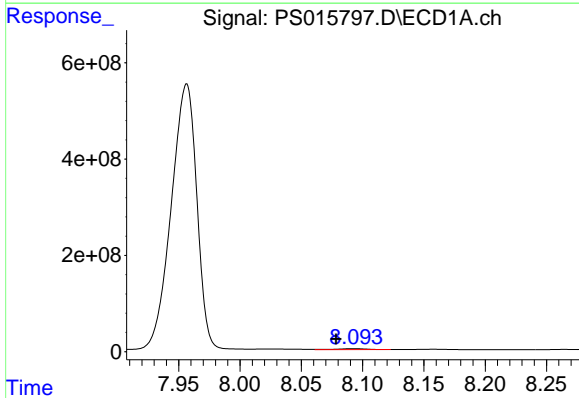
R.T.: 6.988 min
 Delta R.T.: -0.050 min
 Response: 11769647
 Conc: 7.06 ug/ml



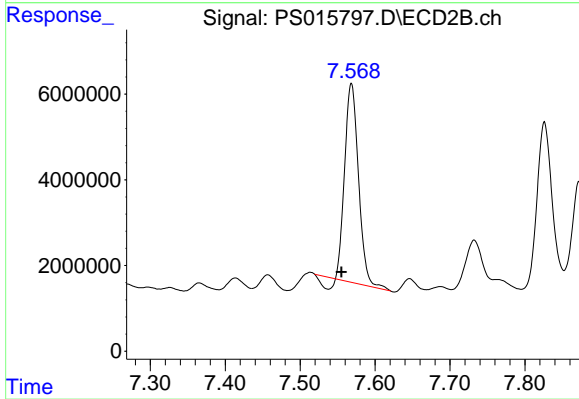
#7 MCPA
 R.T.: 7.692 min
 Delta R.T.: -0.019 min
 Response: 31396667
 Conc: 4.01 ug/ml



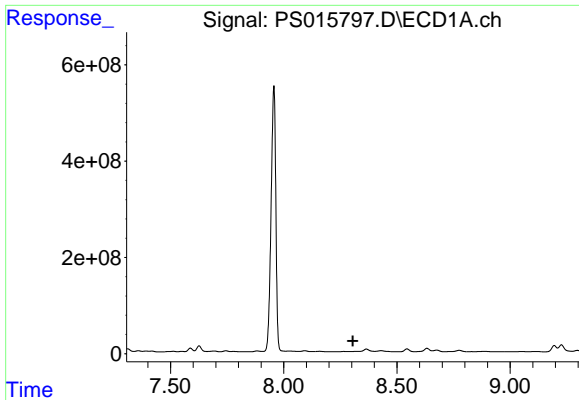
#7 MCPA
 R.T.: 7.232 min
 Delta R.T.: -0.021 min
 Response: 25437510
 Conc: 9.92 ug/ml



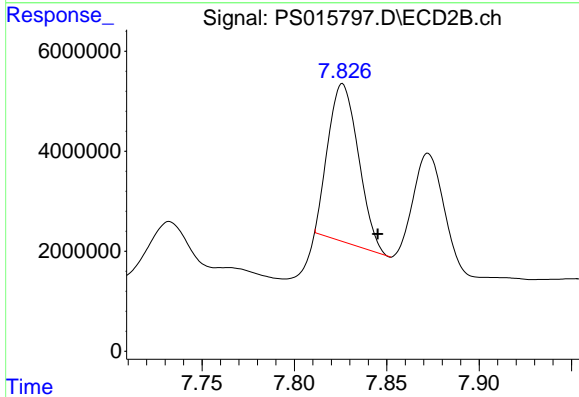
#8 DICHLORPROP
 R.T.: 8.093 min
 Delta R.T.: 0.014 min
 Response: 32052505
 Conc: 20.24 ng/ml



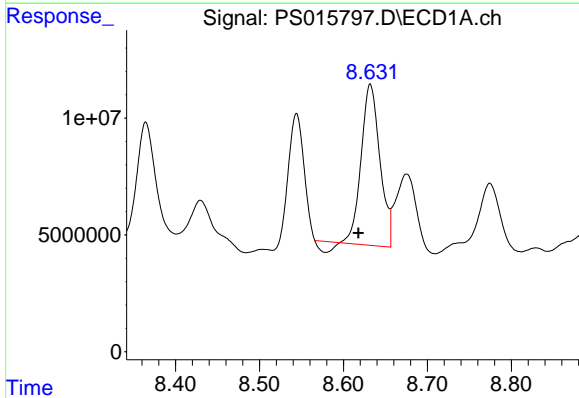
#8 DICHLORPROP
 R.T.: 7.569 min
 Delta R.T.: 0.013 min
 Response: 56982928
 Conc: 110.06 ng/ml



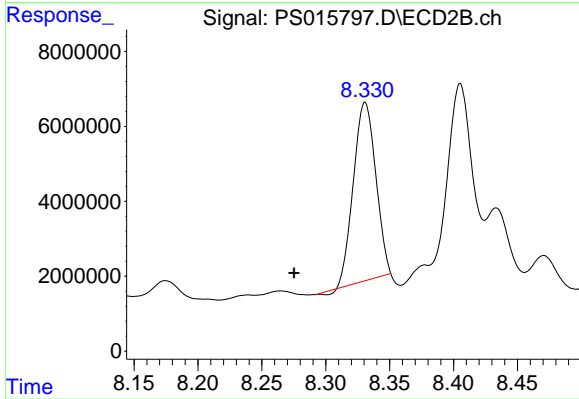
#9 2,4-D
 R.T.: 8.319 min
 Delta R.T.: 0.014 min
 Response: -1806195
 Conc: N.D.



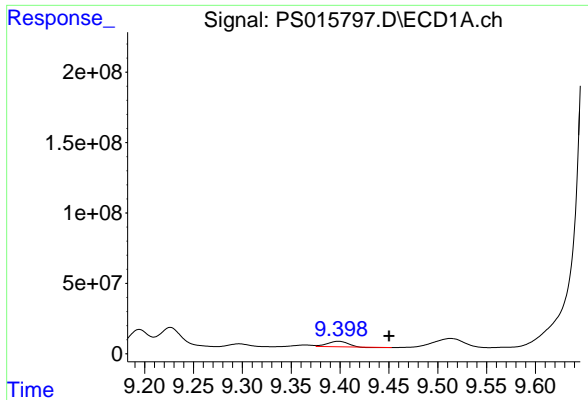
#9 2,4-D
 R.T.: 7.826 min
 Delta R.T.: -0.019 min
 Response: 36005893
 Conc: 58.05 ng/ml



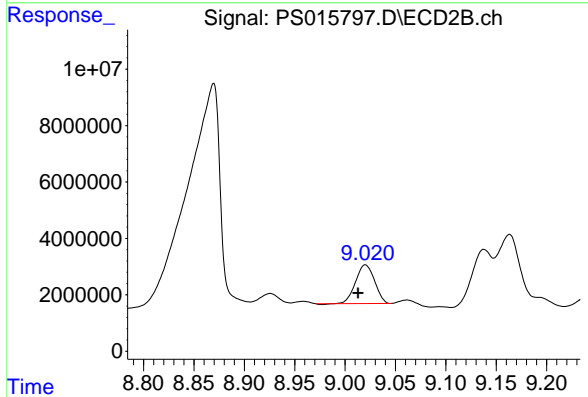
#10 Pentachlorophenol
 R.T.: 8.632 min
 Delta R.T.: 0.014 min
 Response: 102945559
 Conc: 4.77 ng/ml



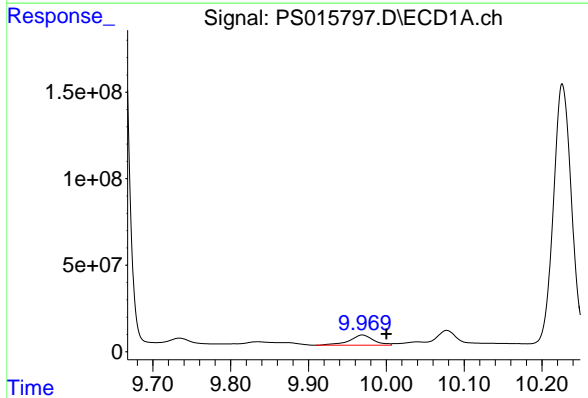
#10 Pentachlorophenol
 R.T.: 8.331 min
 Delta R.T.: 0.056 min
 Response: 58082717
 Conc: 8.27 ng/ml



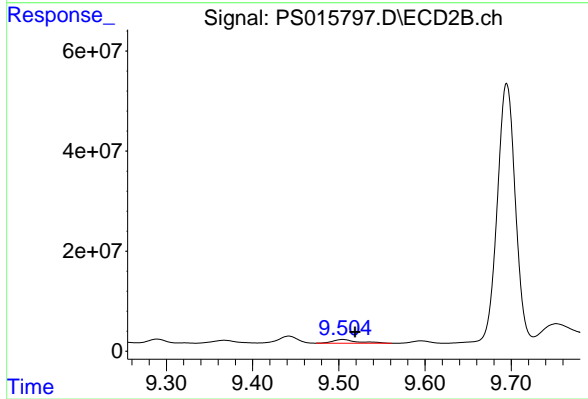
#12 2,4,5-T
R.T.: 9.398 min
Delta R.T.: -0.052 min
Response: 55398256
Conc: 6.28 ng/ml



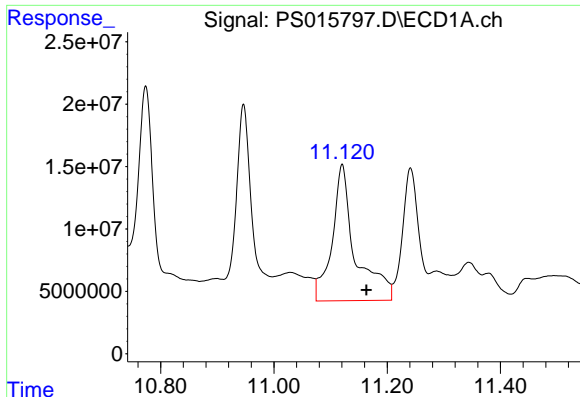
#12 2,4,5-T
R.T.: 9.020 min
Delta R.T.: 0.007 min
Response: 17936844
Conc: 6.36 ng/ml



#13 2,4-DB
R.T.: 9.969 min
Delta R.T.: -0.031 min
Response: 128181274
Conc: 62.66 ng/ml

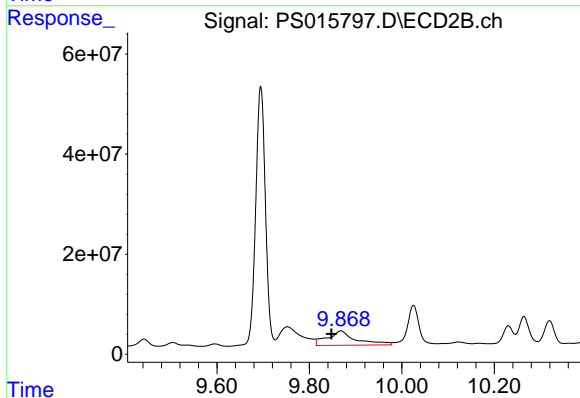


#13 2,4-DB
R.T.: 9.505 min
Delta R.T.: -0.014 min
Response: 15695435
Conc: 42.02 ng/ml



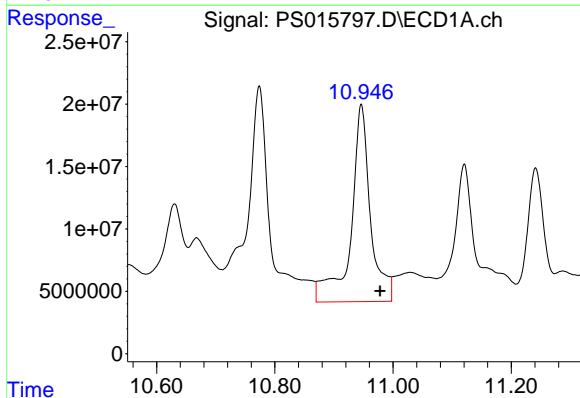
#14 DINOSEB

R.T.: 11.120 min
 Delta R.T.: -0.043 min
 Response: 309380755
 Conc: 47.77 ng/ml



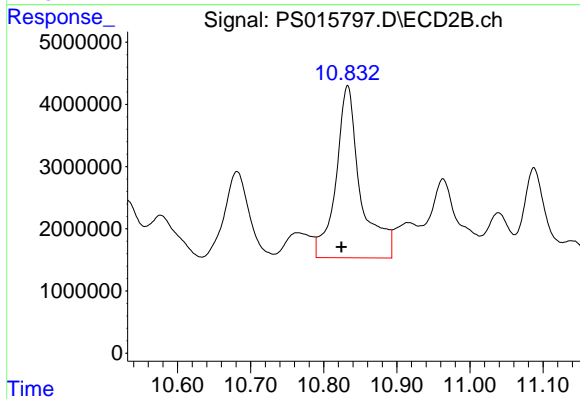
#14 DINOSEB

R.T.: 9.868 min
 Delta R.T.: 0.021 min
 Response: 125155408
 Conc: 62.14 ng/ml



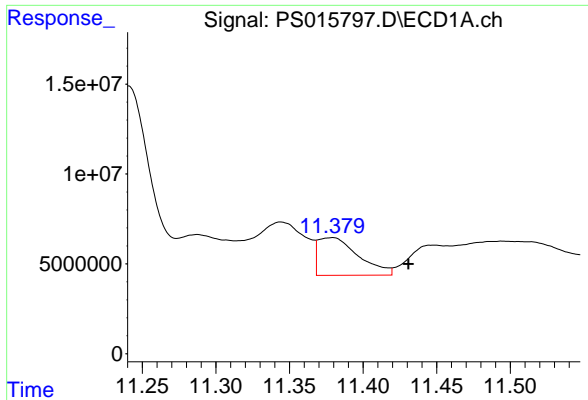
#15 Picloram

R.T.: 10.946 min
 Delta R.T.: -0.031 min
 Response: 361925513
 Conc: 26.47 ng/ml



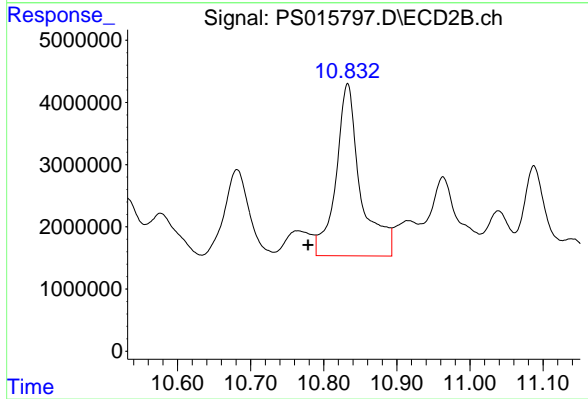
#15 Picloram

R.T.: 10.833 min
 Delta R.T.: 0.009 min
 Response: 64704452
 Conc: 15.39 ng/ml



#16 DCPA

R.T.: 11.378 min
Delta R.T.: -0.053 min
Response: 39851886
Conc: 3.01 ng/ml



#16 DCPA

R.T.: 10.833 min
Delta R.T.: 0.054 min
Response: 64704452
Conc: 15.39 ng/ml