

Data Path : Z:\pestpcbsrv\HPCHEM1\ECD_S\Data\PS061821\
 Data File : PS015836.D
 Signal(s) : Signal #1: ECD1A.ch Signal #2: ECD2B.ch
 Acq On : 19 Jun 2021 16:54
 Operator : DD\AJ
 Sample : I.BLK
 Misc :
 ALS Vial : 2 Sample Multiplier: 1

Integration File signal 1: autoint1.e
 Integration File signal 2: autoint2.e
 Quant Time: Jun 19 23:37:22 2021
 Quant Method : Z:\pestpcbsrv\HPCHEM1\ECD_S\Method\PS061521.M
 Quant Title : 8080.M
 QLast Update : Tue Jun 15 18:15:49 2021
 Response via : Initial Calibration
 Integrator: ChemStation

Volume Inj. : 2 µl
 Signal #1 Phase : Rtx-CLPesticides Signal #2 Phase: Rtx-CLPesticides2
 Signal #1 Info : 30M x 0.32mm x0.5 Signal #2 Info : 30M x 0.32mm x 0.25µm

Compound	RT#1	RT#2	Resp#1	Resp#2	ng/ml	ng/ml
----------	------	------	--------	--------	-------	-------

 System Monitoring Compounds

4) S	2,4-DCAA	7.190	6.767	793.7E6	279.8E6	477.693	555.417
------	----------	-------	-------	---------	---------	---------	---------

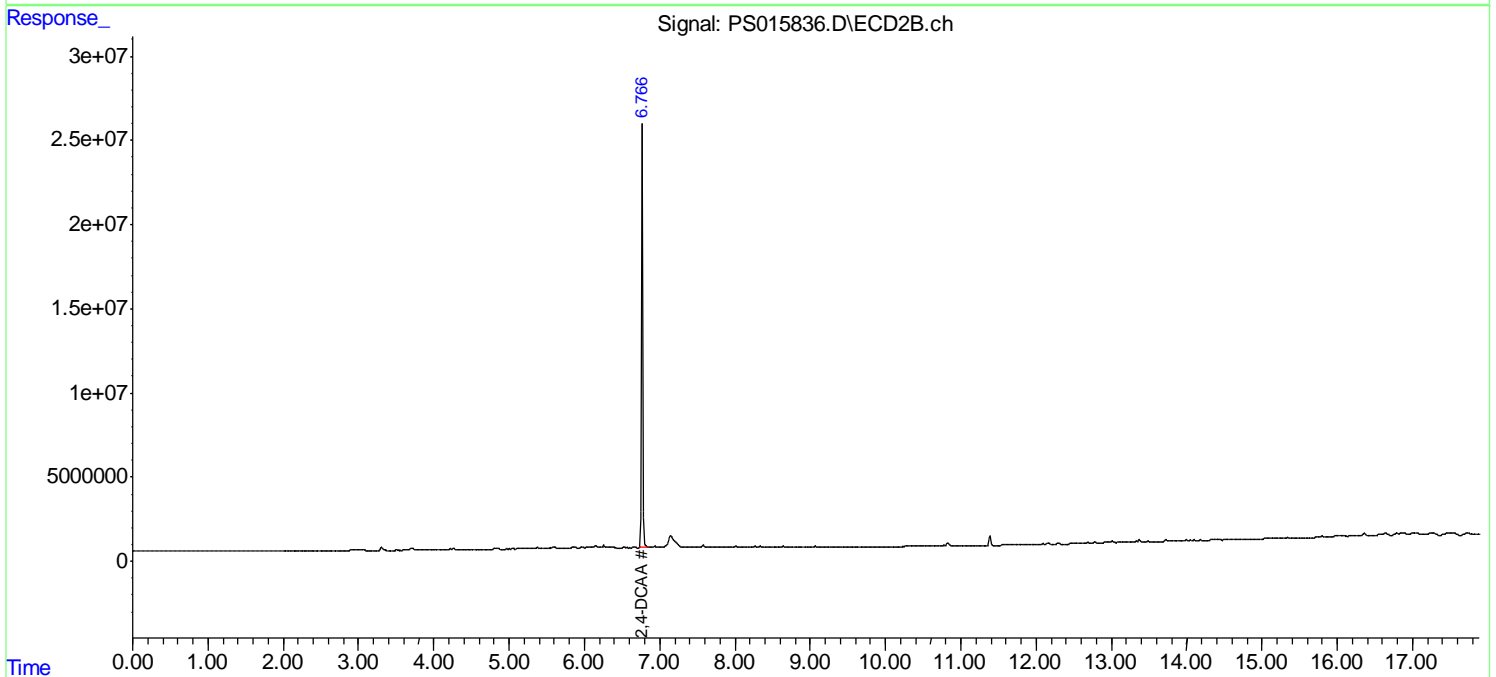
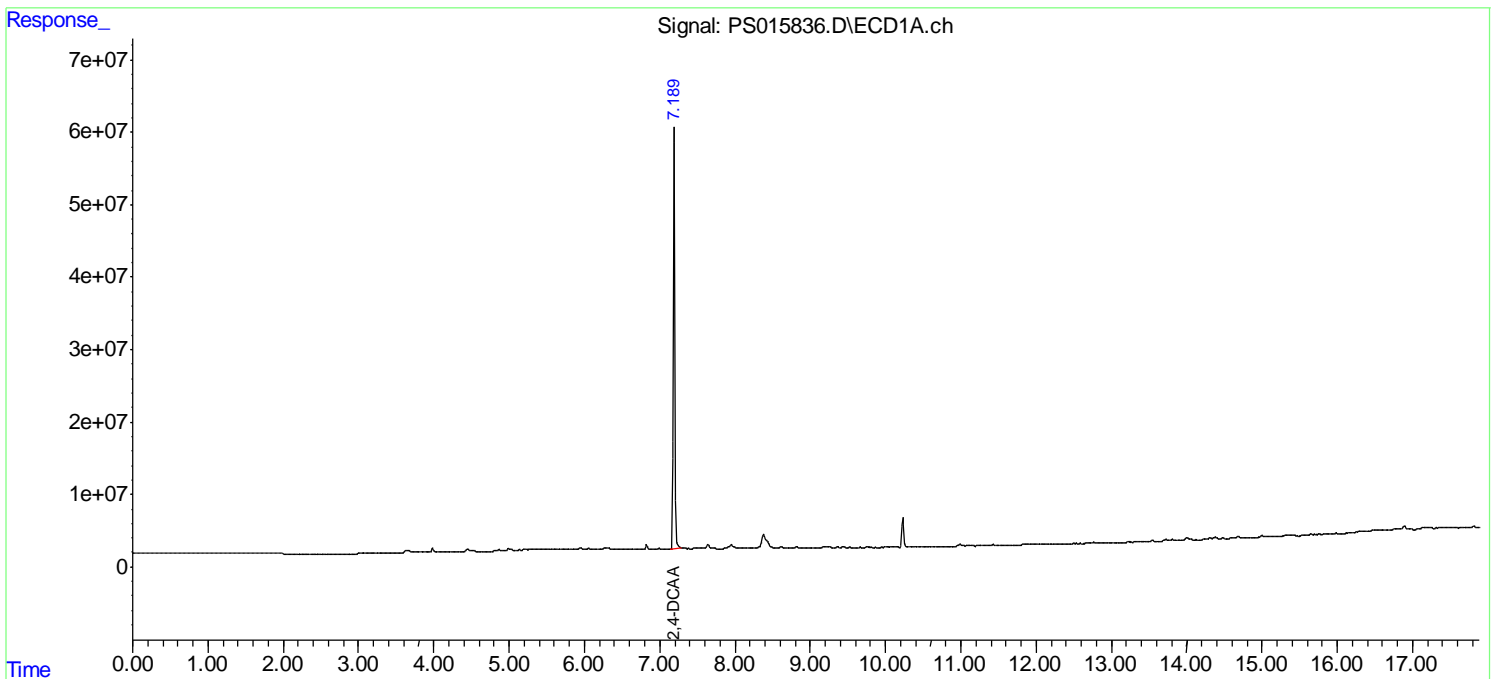
Target Compounds

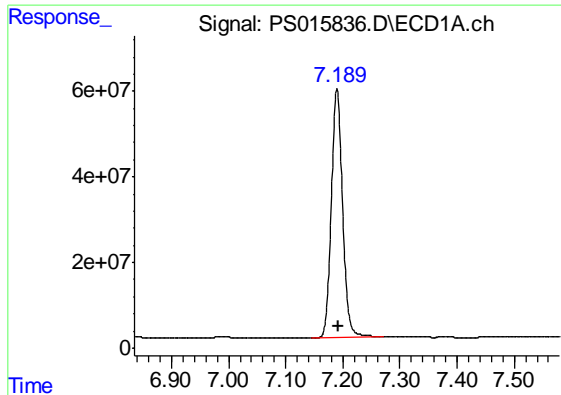
(f)=RT Delta > 1/2 Window (#)=Amounts differ by > 25% (m)=manual int.

Data Path : Z:\pestpcbsrv\HPCHEM1\ECD_S\Data\PS061821\
Data File : PS015836.D
Signal(s) : Signal #1: ECD1A.ch Signal #2: ECD2B.ch
Acq On : 19 Jun 2021 16:54
Operator : DD\AJ
Sample : I.BLK
Misc :
ALS Vial : 2 Sample Multiplier: 1

Integration File signal 1: autoint1.e
Integration File signal 2: autoint2.e
Quant Time: Jun 19 23:37:22 2021
Quant Method : Z:\pestpcbsrv\HPCHEM1\ECD_S\Method\PS061521.M
Quant Title : 8080.M
QLast Update : Tue Jun 15 18:15:49 2021
Response via : Initial Calibration
Integrator: ChemStation

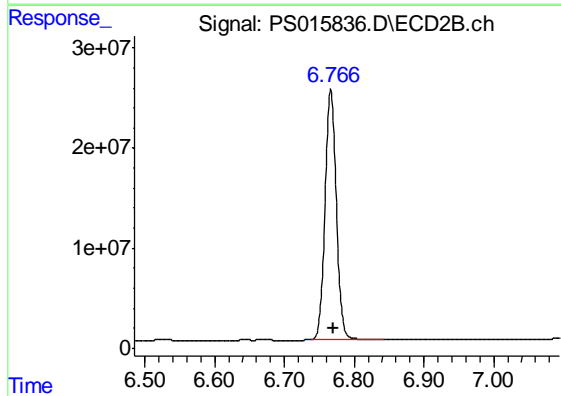
Volume Inj. : 2 µl
Signal #1 Phase : Rtx-CLPesticides Signal #2 Phase: Rtx-CLPesticides2
Signal #1 Info : 30M x 0.32mm x0.5 Signal #2 Info : 30M x 0.32mm x 0.25µm





#4 2,4-DCAA

R.T.: 7.190 min
Delta R.T.: -0.003 min
Response: 793660762
Conc: 477.69 ng/ml



#4 2,4-DCAA

R.T.: 6.767 min
Delta R.T.: -0.004 min
Response: 279847755
Conc: 555.42 ng/ml