

Data Path : Z:\pestpcbsrv\HPCHEM1\ECD\_S\Data\PS061918\  
 Data File : PS000444.D  
 Signal(s) : Signal #1: ECD1A.ch Signal #2: ECD2B.ch  
 Acq On : 19 Jun 2018 12:12  
 Operator : UA  
 Sample : J3508-03  
 Misc :  
 ALS Vial : 4 Sample Multiplier: 1

Instrument :  
 ECD\_S  
 ClientSampleId :

Integration File signal 1: autoint1.e  
 Integration File signal 2: autoint2.e  
 Quant Time: Jun 19 14:23:11 2018  
 Quant Method : \\TERASTORAGE\Terastorage\pestpcbsrv\HPCHEM1\ECD\_S\Method\PS061718.M  
 Quant Title : 8080.M  
 QLast Update : Mon Jun 18 00:27:44 2018  
 Response via : Initial Calibration  
 Integrator: ChemStation

Volume Inj. : 2 µl  
 Signal #1 Phase : Rtx-CLPesticides Signal #2 Phase: Rtx-CLPesticides2  
 Signal #1 Info : 30M x 0.32mm x0.5 Signal #2 Info : 30M x 0.32mm x 0.25µm

Compound	RT#1	RT#2	Resp#1	Resp#2	ng/ml	ng/ml
System Monitoring Compounds						
4) S 2,4-DCAA	11.817	11.179	116.2E6	95304006	308.488	280.051
Target Compounds						
1) T Dalapon	0.000	2.586	0	25539	N.D.	0.059 #
2) T 3,5-DICHL...	0.000	9.413	0	46281611	N.D.	100.603 #
3) T 4-Nitroph...	11.475	10.335	-235385	2663245	N.D.	13.591
5) T DICAMBA	12.150	11.466	535154	423454	0.379	0.342
6) T MCPP	12.501	11.661	3804767	152748	3.360	0.159 #
7) T MCPA	12.790	12.041	6312244	2599444	3.591	1.877 #
8) T DICHLORPROP	13.328	12.594	1358064	2299957	3.610	7.143 #
9) T 2,4-D	13.738	0.000	587465	0	1.228	N.D. #
10) T Pentachlo...	14.086	13.630	4242577	2323432	0.808	0.491 #
11) T 2,4,5-TP ...	14.949	14.241	4813112	5042352	2.217	2.591
12) T 2,4,5-T	15.350	14.848	10746290	15876401	4.991	9.388 #
13) T 2,4-DB	16.144	15.458	616172	3948783	2.093	15.952 #
14) T DINOSEB	17.610	15.890	14094634	5559191	9.465	4.261 #
15) T Picloram	17.370	17.137	28415582	16560807	9.730	6.639 #
16) T DCPA	17.961	17.081	9037287	9139574	3.527	3.963

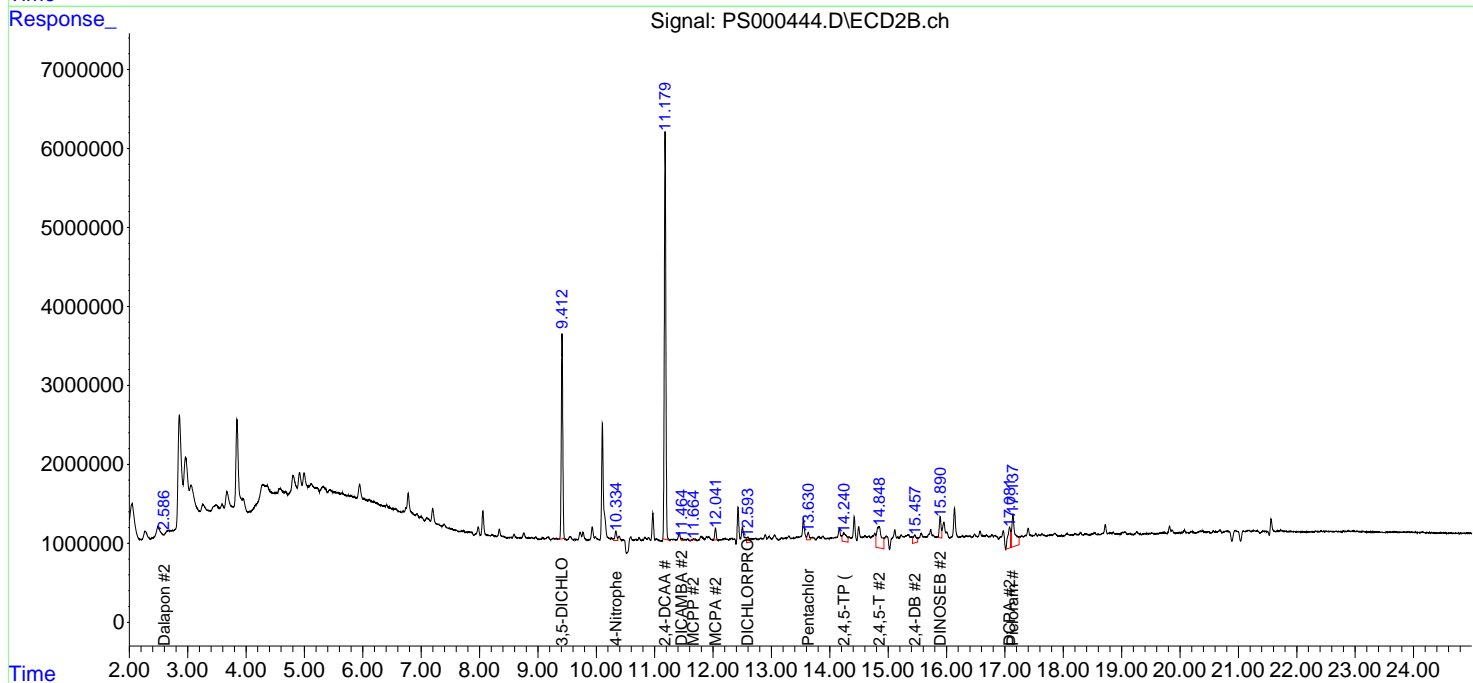
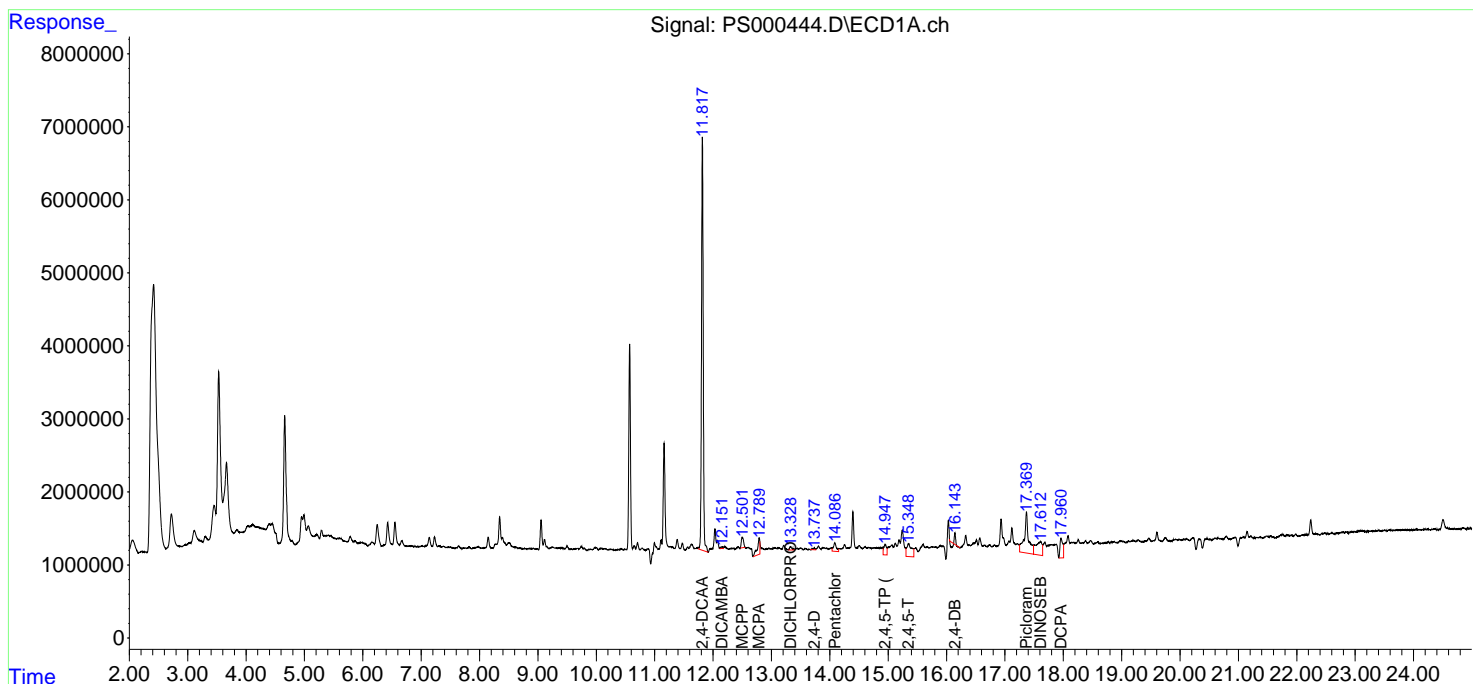
(f)=RT Delta > 1/2 Window (#)=Amounts differ by > 25% (m)=manual int.

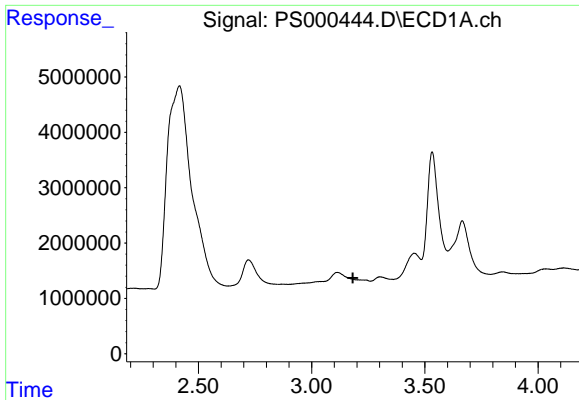
Data Path : Z:\pestpcbsrv\HPCHEM1\ECD\_S\Data\PS061918\  
 Data File : PS000444.D  
 Signal(s) : Signal #1: ECD1A.ch Signal #2: ECD2B.ch  
 Acq On : 19 Jun 2018 12:12  
 Operator : UA  
 Sample : J3508-03  
 Misc :  
 ALS Vial : 4 Sample Multiplier: 1

Instrument :  
 ECD\_S  
 ClientSampled :

Integration File signal 1: autoint1.e  
 Integration File signal 2: autoint2.e  
 Quant Time: Jun 19 14:23:11 2018  
 Quant Method : \\TERASTORAGE\Terastorage\pestpcbsrv\HPCHEM1\ECD\_S\Method\PS061718.M  
 Quant Title : 8080.M  
 QLast Update : Mon Jun 18 00:27:44 2018  
 Response via : Initial Calibration  
 Integrator: ChemStation

Volume Inj. : 2 µl  
 Signal #1 Phase : Rtx-CLPesticides Signal #2 Phase: Rtx-CLPesticides2  
 Signal #1 Info : 30M x 0.32mm x0.5 Signal #2 Info : 30M x 0.32mm x 0.25µm

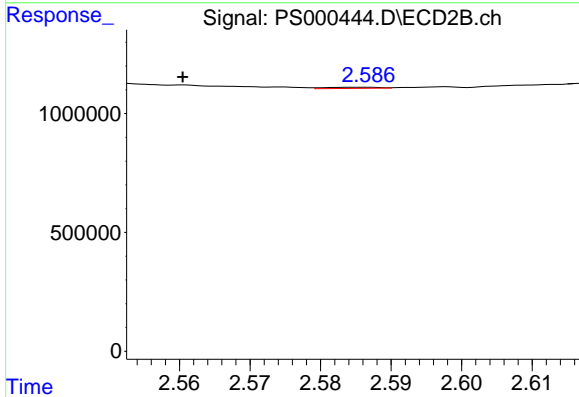




#1 Dalapon

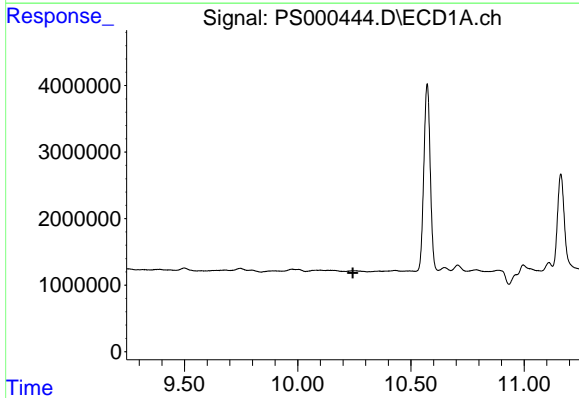
R.T.: 0.000 min  
 Exp R.T. : 3.182 min  
 Response: 0  
 Conc: N.D.

Instrument :  
 ECD\_S  
 ClientSampleId :



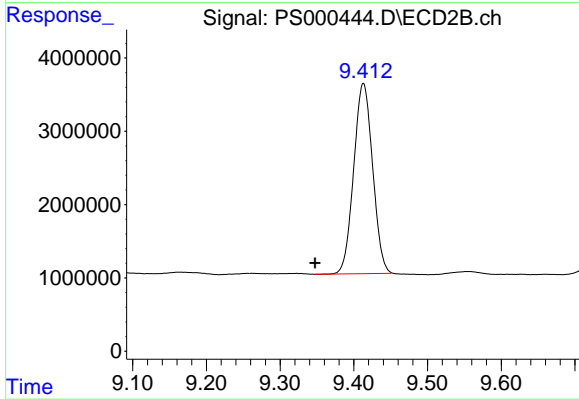
#1 Dalapon

R.T.: 2.586 min  
 Delta R.T.: 0.026 min  
 Response: 25539  
 Conc: 0.06 ng/ml



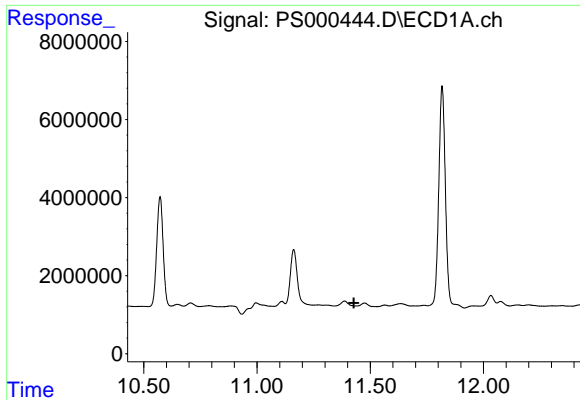
#2 3,5-DICHLOROBENZOIC ACID

R.T.: 0.000 min  
 Exp R.T. : 10.244 min  
 Response: 0  
 Conc: N.D.



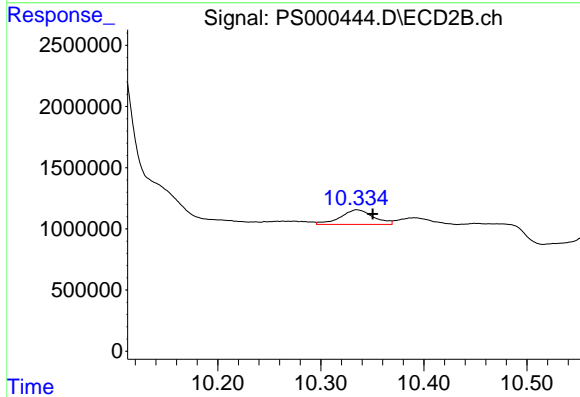
#2 3,5-DICHLOROBENZOIC ACID

R.T.: 9.413 min  
 Delta R.T.: 0.065 min  
 Response: 46281611  
 Conc: 100.60 ng/ml

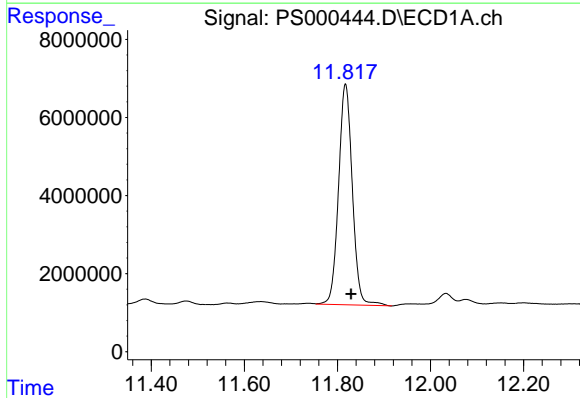


#3 4-Nitrophenol  
R.T.: 11.475 min  
Delta R.T.: 0.047 min  
Response: -235385  
Conc: N.D.

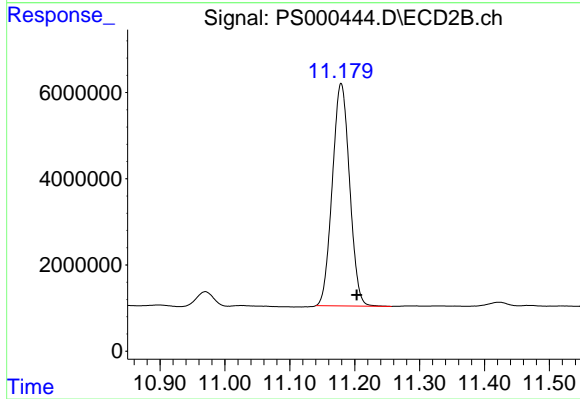
Instrument :  
ECD\_S  
ClientSampled :



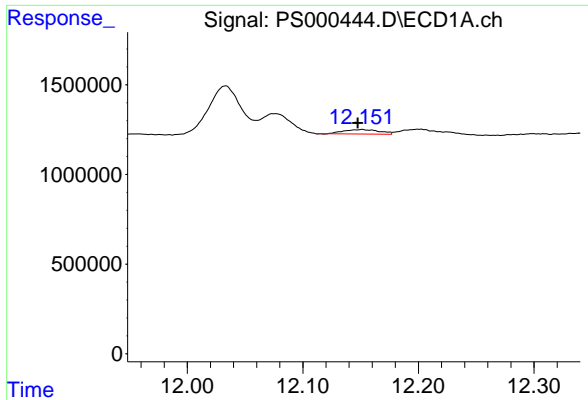
#3 4-Nitrophenol  
R.T.: 10.335 min  
Delta R.T.: -0.015 min  
Response: 2663245  
Conc: 13.59 ng/ml



#4 2,4-DCAA  
R.T.: 11.817 min  
Delta R.T.: -0.012 min  
Response: 116193450  
Conc: 308.49 ng/ml

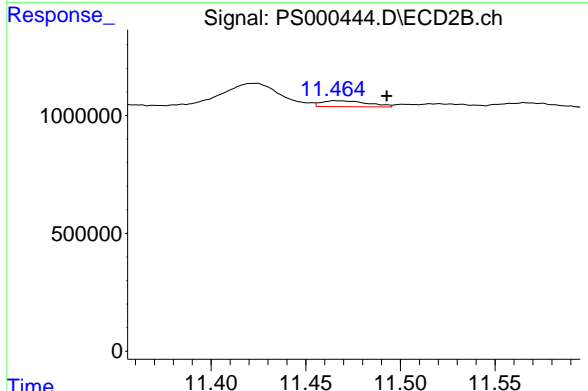


#4 2,4-DCAA  
R.T.: 11.179 min  
Delta R.T.: -0.024 min  
Response: 95304006  
Conc: 280.05 ng/ml

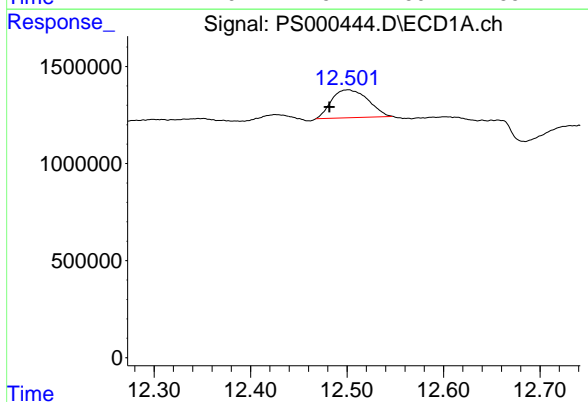


#5 DICAMBA  
 R.T.: 12.150 min  
 Delta R.T.: 0.003 min  
 Response: 535154  
 Conc: 0.38 ng/ml

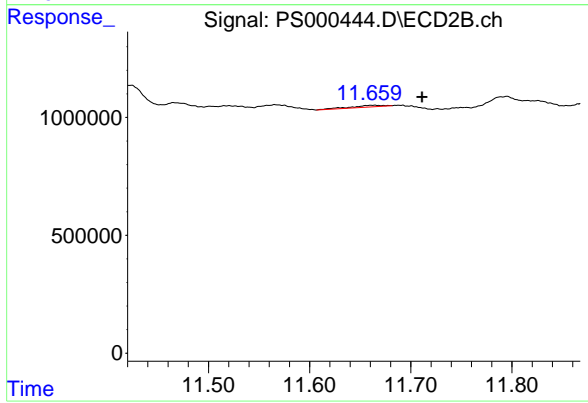
Instrument :  
 ECD\_S  
 ClientSampleId :



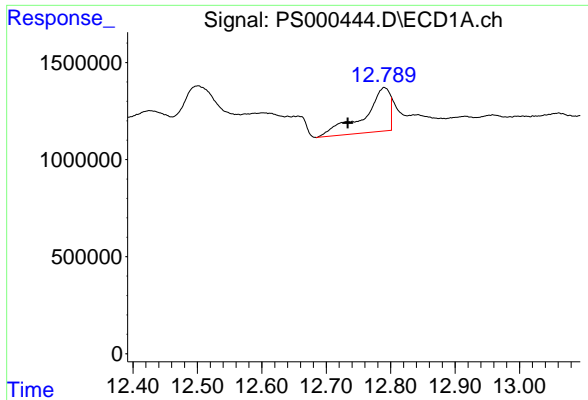
#5 DICAMBA  
 R.T.: 11.466 min  
 Delta R.T.: -0.027 min  
 Response: 423454  
 Conc: 0.34 ng/ml



#6 MCP  
 R.T.: 12.501 min  
 Delta R.T.: 0.019 min  
 Response: 3804767  
 Conc: 3.36 ug/ml

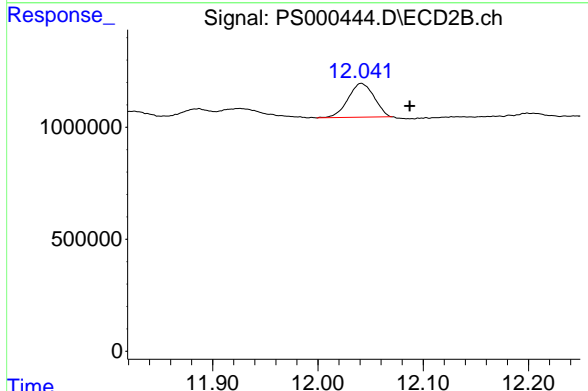


#6 MCP  
 R.T.: 11.661 min  
 Delta R.T.: -0.050 min  
 Response: 152748  
 Conc: 0.16 ug/ml

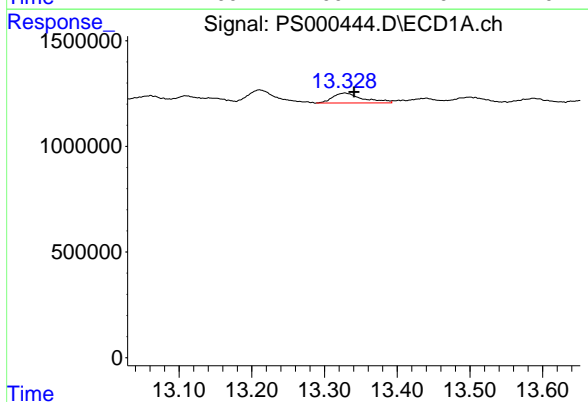


#7 MCPA  
 R.T.: 12.790 min  
 Delta R.T.: 0.057 min  
 Response: 6312244  
 Conc: 3.59 ug/ml

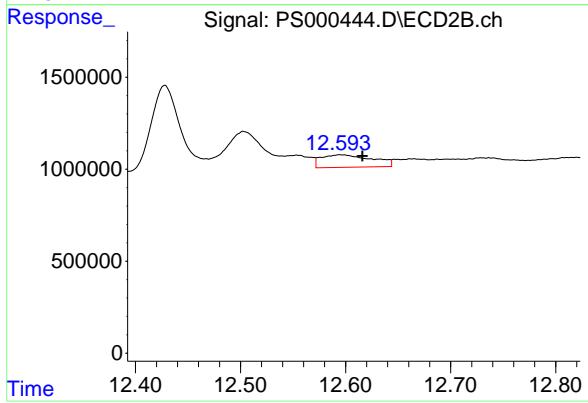
Instrument :  
 ECD\_S  
 ClientSampleId :



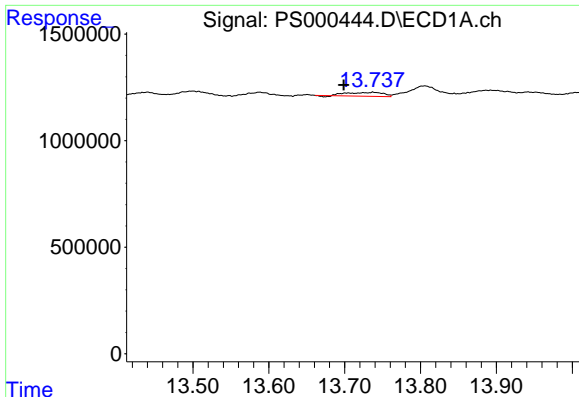
#7 MCPA  
 R.T.: 12.041 min  
 Delta R.T.: -0.046 min  
 Response: 2599444  
 Conc: 1.88 ug/ml



#8 DICHLORPROP  
 R.T.: 13.328 min  
 Delta R.T.: -0.013 min  
 Response: 1358064  
 Conc: 3.61 ng/ml

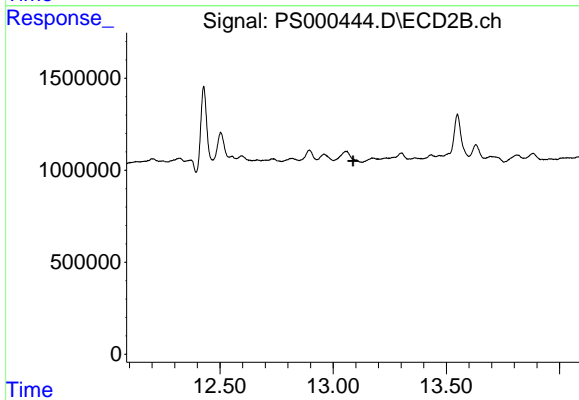


#8 DICHLORPROP  
 R.T.: 12.594 min  
 Delta R.T.: -0.022 min  
 Response: 2299957  
 Conc: 7.14 ng/ml

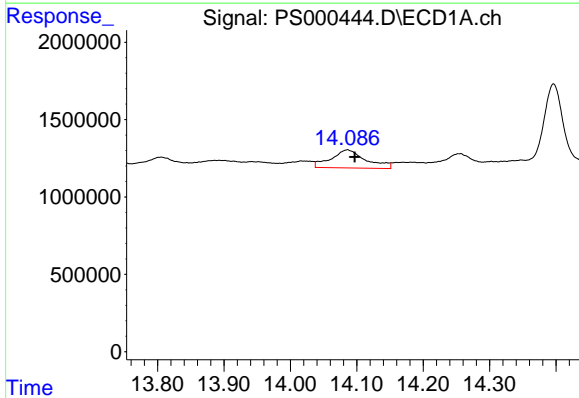


#9 2,4-D  
 R.T.: 13.738 min  
 Delta R.T.: 0.039 min  
 Response: 587465  
 Conc: 1.23 ng/ml

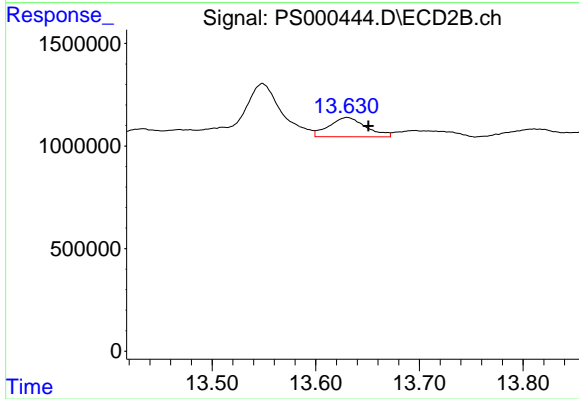
Instrument :  
 ECD\_S  
 ClientSampled :



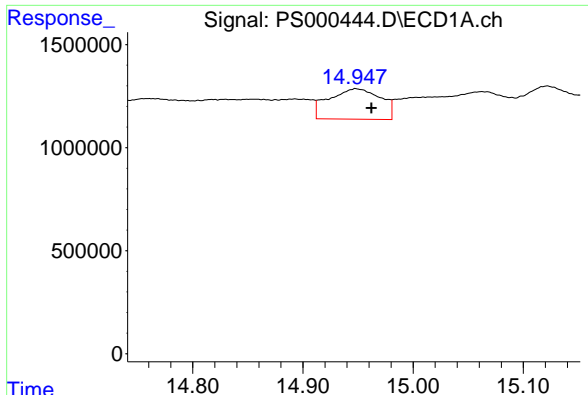
#9 2,4-D  
 R.T.: 0.000 min  
 Exp R.T. : 13.087 min  
 Response: 0  
 Conc: N.D.



#10 Pentachlorophenol  
 R.T.: 14.086 min  
 Delta R.T.: -0.011 min  
 Response: 4242577  
 Conc: 0.81 ng/ml



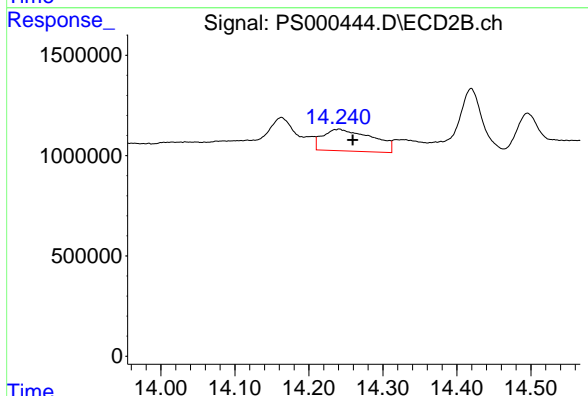
#10 Pentachlorophenol  
 R.T.: 13.630 min  
 Delta R.T.: -0.021 min  
 Response: 2323432  
 Conc: 0.49 ng/ml



#11 2,4,5-TP (SILVEX)

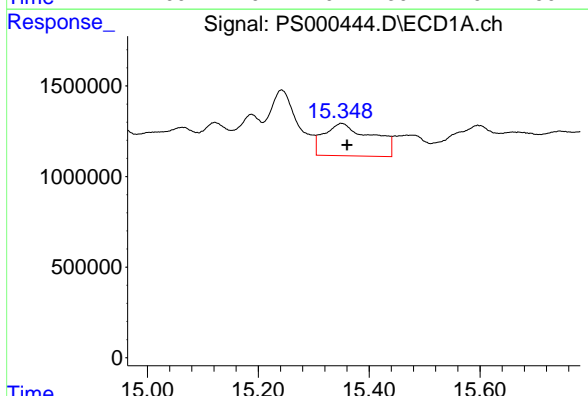
R.T.: 14.949 min  
 Delta R.T.: -0.013 min  
 Response: 4813112  
 Conc: 2.22 ng/ml

Instrument :  
 ECD\_S  
 ClientSampleId :



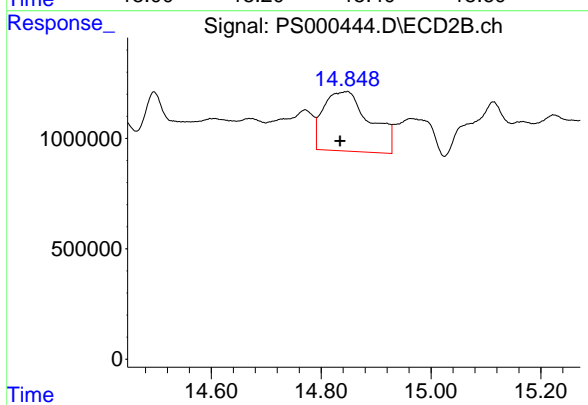
#11 2,4,5-TP (SILVEX)

R.T.: 14.241 min  
 Delta R.T.: -0.018 min  
 Response: 5042352  
 Conc: 2.59 ng/ml



#12 2,4,5-T

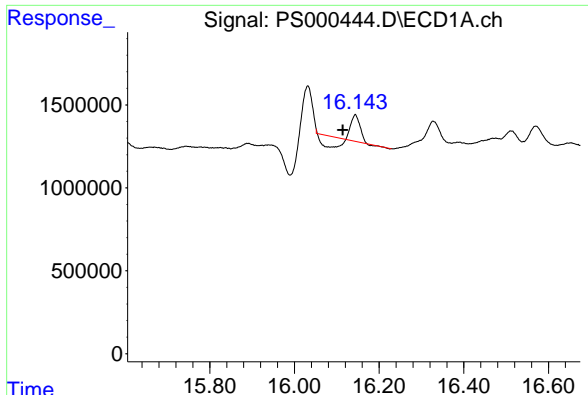
R.T.: 15.350 min  
 Delta R.T.: -0.010 min  
 Response: 10746290  
 Conc: 4.99 ng/ml



#12 2,4,5-T

R.T.: 14.848 min  
 Delta R.T.: 0.014 min  
 Response: 15876401  
 Conc: 9.39 ng/ml

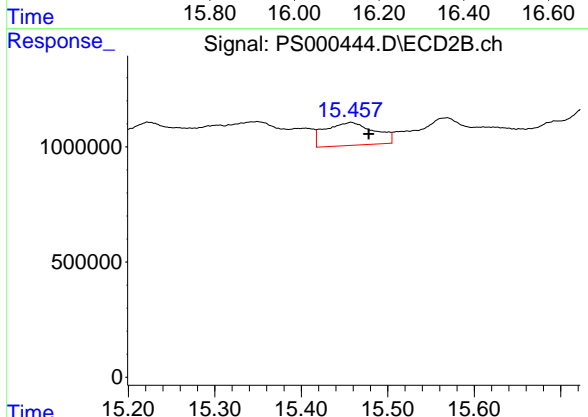




#13 2,4-DB

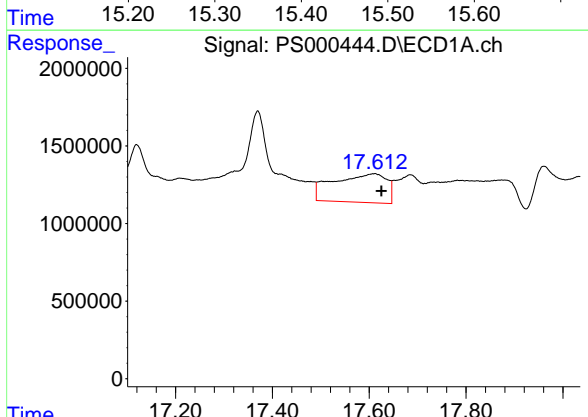
R.T.: 16.144 min  
 Delta R.T.: 0.030 min  
 Response: 616172  
 Conc: 2.09 ng/ml

Instrument :  
 ECD\_S  
 ClientSampleId :



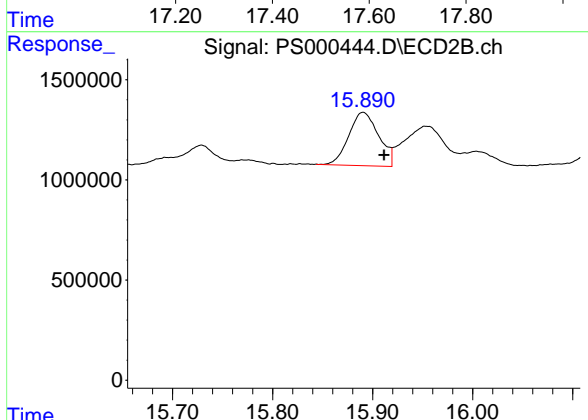
#13 2,4-DB

R.T.: 15.458 min  
 Delta R.T.: -0.020 min  
 Response: 3948783  
 Conc: 15.95 ng/ml



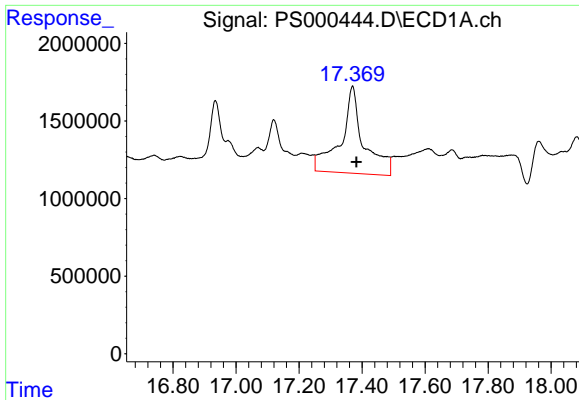
#14 DINOSEB

R.T.: 17.610 min  
 Delta R.T.: -0.015 min  
 Response: 14094634  
 Conc: 9.47 ng/ml



#14 DINOSEB

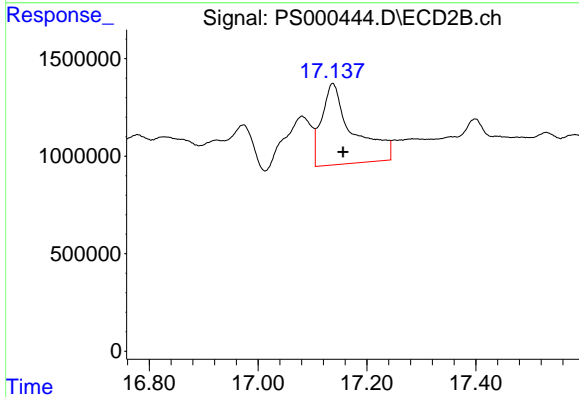
R.T.: 15.890 min  
 Delta R.T.: -0.021 min  
 Response: 5559191  
 Conc: 4.26 ng/ml



#15 Picloram

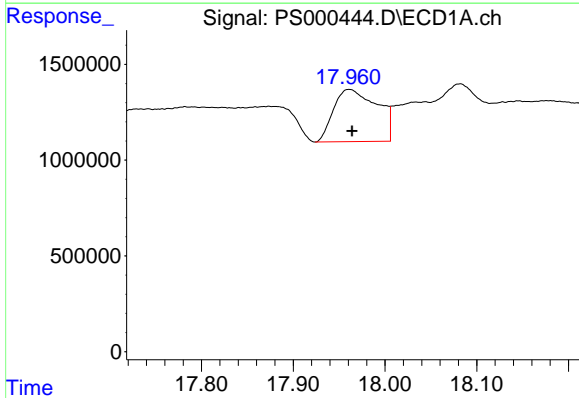
R.T.: 17.370 min  
 Delta R.T.: -0.012 min  
 Response: 28415582  
 Conc: 9.73 ng/ml

Instrument :  
 ECD\_S  
 ClientSampled :



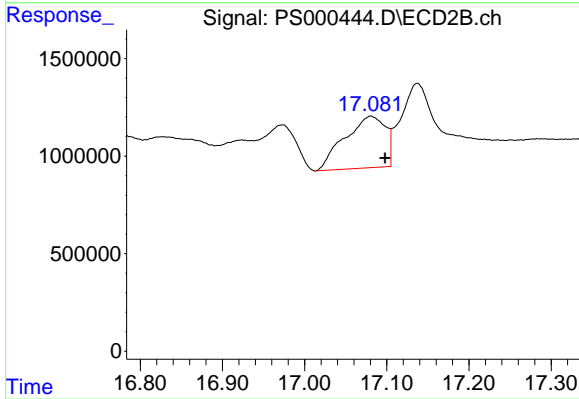
#15 Picloram

R.T.: 17.137 min  
 Delta R.T.: -0.019 min  
 Response: 16560807  
 Conc: 6.64 ng/ml



#16 DCPA

R.T.: 17.961 min  
 Delta R.T.: -0.003 min  
 Response: 9037287  
 Conc: 3.53 ng/ml



#16 DCPA

R.T.: 17.081 min  
 Delta R.T.: -0.017 min  
 Response: 9139574  
 Conc: 3.96 ng/ml