

Data Path : Z:\pestpcbsrv\HPCHEM1\ECD_S\Data\PS061921\
 Data File : PS015884.D
 Signal(s) : Signal #1: ECD1A.ch Signal #2: ECD2B.ch
 Acq On : 20 Jun 2021 13:28
 Operator : DD\AJ
 Sample : PB136975BS
 Misc :
 ALS Vial : 102 Sample Multiplier: 1

Instrument :
 ECD_S
 ClientSampleId :
 PB136975BS

Integration File signal 1: autoint1.e
 Integration File signal 2: autoint2.e
 Quant Time: Jun 21 01:58:59 2021
 Quant Method : Z:\pestpcbsrv\HPCHEM1\ECD_S\Method\PS061521.M
 Quant Title : 8080.M
 QLast Update : Tue Jun 15 18:15:49 2021
 Response via : Initial Calibration
 Integrator: ChemStation

Volume Inj. : 2 µl
 Signal #1 Phase : Rtx-CLPesticides Signal #2 Phase: Rtx-CLPesticides2
 Signal #1 Info : 30M x 0.32mm x0.5 Signal #2 Info : 30M x 0.32mm x 0.25µm

	Compound	RT#1	RT#2	Resp#1	Resp#2	ng/ml	ng/ml

System Monitoring Compounds							
4) S	2,4-DCAA	7.189	6.767	858.8E6	273.3E6	516.901	542.477
Target Compounds							
1) T	Dalapon	3.015	2.516	995.1E6	300.6E6	493.008m	462.771m
2) T	3,5-DICHL...	6.406	5.958	1133.7E6	385.3E6	505.135	510.951
3) T	4-Nitroph...	7.016	6.387	431.9E6	148.0E6	475.104	483.917
5) T	DICAMBA	7.380	6.930	3073.1E6	1089.8E6	478.004	525.231
6) T	MCP P	7.548	7.025	230.1E6	84591557	42.371	50.751
7) T	MCPA	7.697	7.237	330.3E6	127.9E6	42.196	49.861
8) T	DICHLORPROP	8.073	7.550	730.8E6	265.6E6	461.568	512.904
9) T	2,4-D	8.301	7.841	788.0E6	313.2E6	449.604	504.975
10) T	Pentachlo...	8.611	8.268	10605.2E6	3801.6E6	491.359	541.249
11) T	2,4,5-TP ...	9.161	8.630	3926.8E6	1462.7E6	449.233	529.814
12) T	2,4,5-T	9.445	9.006	3953.1E6	1475.1E6	447.773	523.018
13) T	2,4-DB	9.994	9.512	810.2E6	190.7E6	396.099	510.524 #
14) T	DINOSEB	11.154	9.840	2639.0E6	961.2E6	407.471	477.213
15) T	Picloram	10.972	10.817	5224.3E6	2040.7E6	382.152	485.233 #
16) T	DCPA	11.422	10.771	5690.8E6	2278.2E6	430.259	541.875 #

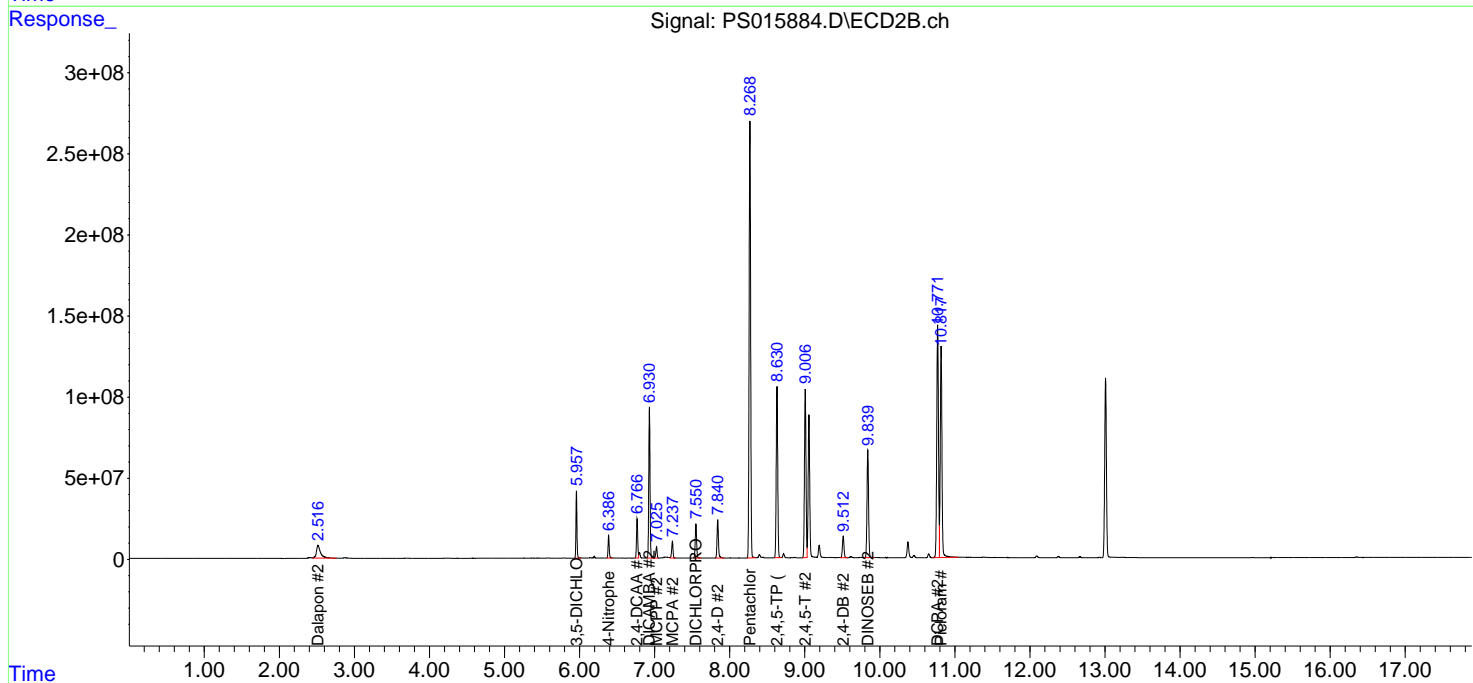
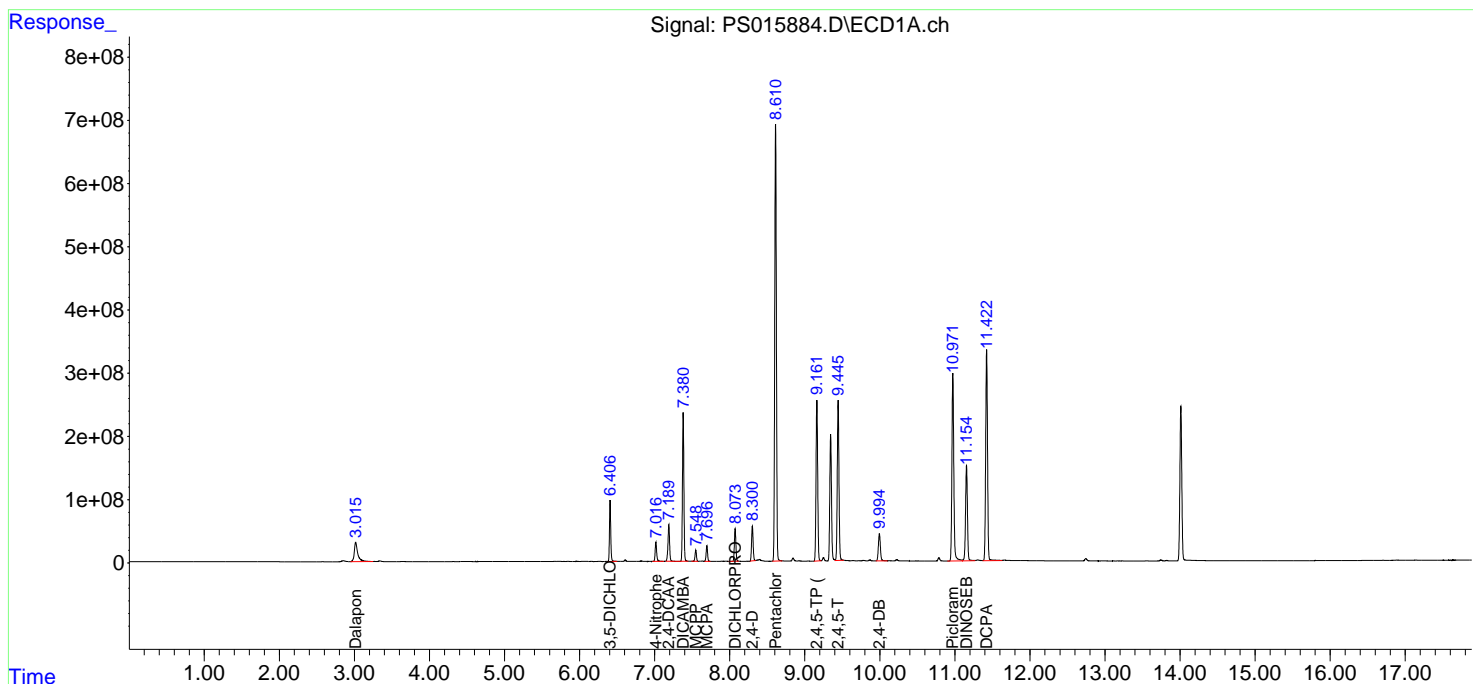
(f)=RT Delta > 1/2 Window (#)=Amounts differ by > 25% (m)=manual int.

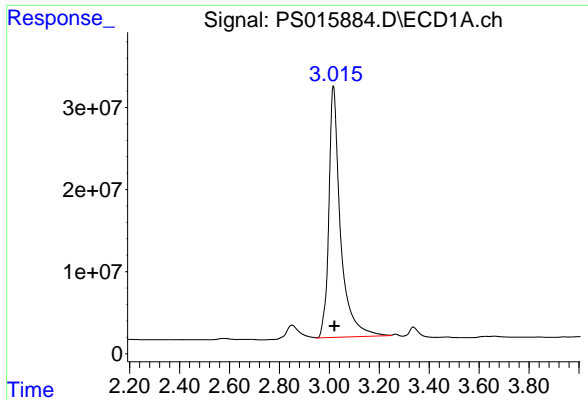
Data Path : Z:\pestpcbsrv\HPCHEM1\ECD_S\Data\PS061921\
 Data File : PS015884.D
 Signal(s) : Signal #1: ECD1A.ch Signal #2: ECD2B.ch
 Acq On : 20 Jun 2021 13:28
 Operator : DD\AJ
 Sample : PB136975BS
 Misc :
 ALS Vial : 102 Sample Multiplier: 1

Instrument :
 ECD_S
 ClientSampleId :
 PB136975BS

Integration File signal 1: autoint1.e
 Integration File signal 2: autoint2.e
 Quant Time: Jun 21 01:58:59 2021
 Quant Method : Z:\pestpcbsrv\HPCHEM1\ECD_S\Method\PS061521.M
 Quant Title : 8080.M
 QLast Update : Tue Jun 15 18:15:49 2021
 Response via : Initial Calibration
 Integrator: ChemStation

Volume Inj. : 2 µl
 Signal #1 Phase : Rtx-CLPesticides Signal #2 Phase: Rtx-CLPesticides2
 Signal #1 Info : 30M x 0.32mm x0.5 Signal #2 Info : 30M x 0.32mm x 0.25µm

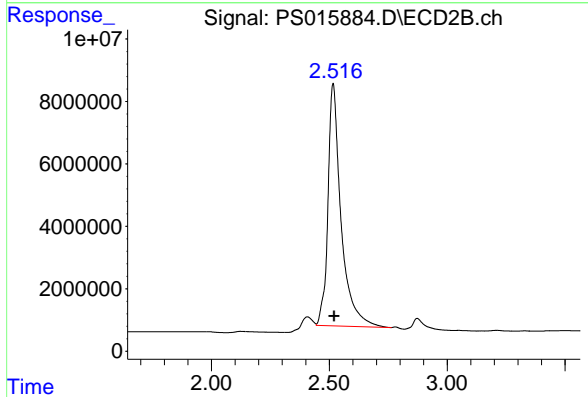




#1 Dalapon

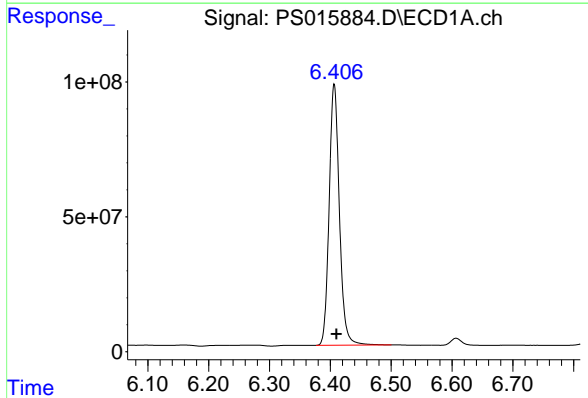
R.T.: 3.015 min
 Delta R.T.: -0.005 min
 Response: 995068273
 Conc: 493.01 ng/ml m

Instrument :
 ECD_S
 ClientSampleId :
 PB136975BS



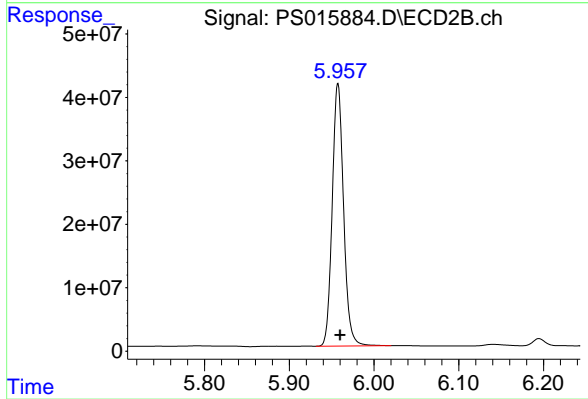
#1 Dalapon

R.T.: 2.516 min
 Delta R.T.: -0.005 min
 Response: 300561130
 Conc: 462.77 ng/ml m



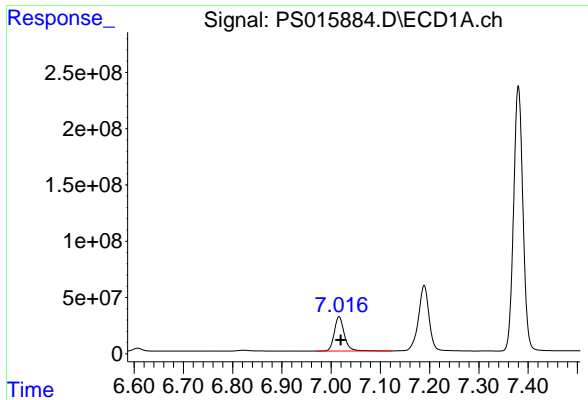
#2 3,5-DICHLOROBENZOIC ACID

R.T.: 6.406 min
 Delta R.T.: -0.003 min
 Response: 1133746493
 Conc: 505.14 ng/ml



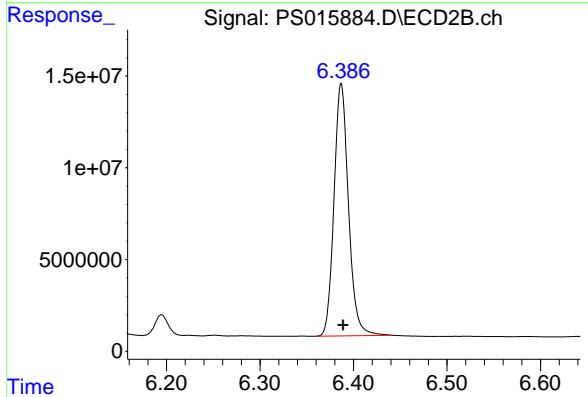
#2 3,5-DICHLOROBENZOIC ACID

R.T.: 5.958 min
 Delta R.T.: -0.002 min
 Response: 385340848
 Conc: 510.95 ng/ml

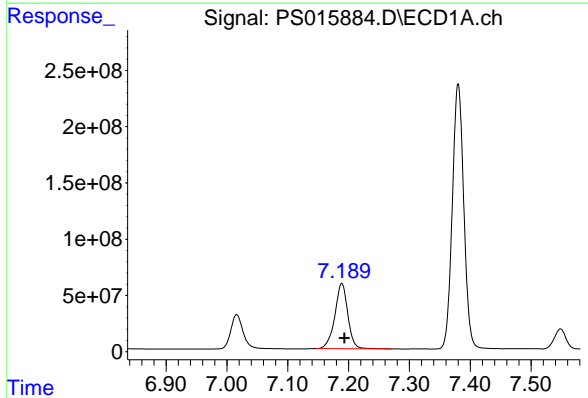


#3 4-Nitrophenol
 R.T.: 7.016 min
 Delta R.T.: -0.003 min
 Response: 431940691
 Conc: 475.10 ng/ml

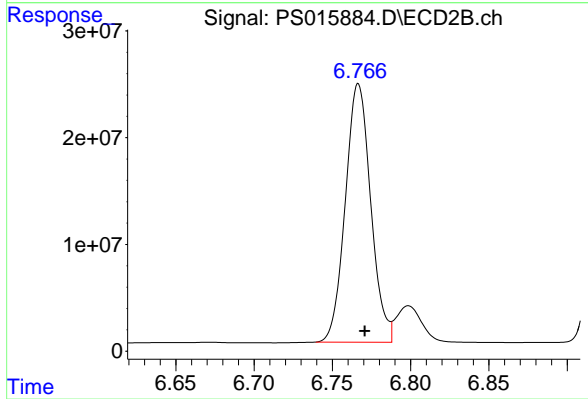
Instrument :
 ECD_S
 ClientSampleId :
 PB136975BS



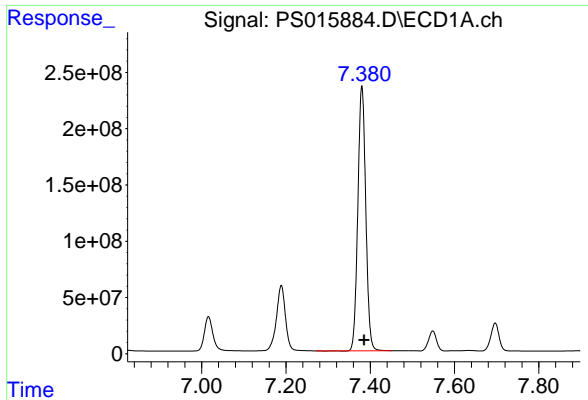
#3 4-Nitrophenol
 R.T.: 6.387 min
 Delta R.T.: -0.002 min
 Response: 148045350
 Conc: 483.92 ng/ml



#4 2,4-DCAA
 R.T.: 7.189 min
 Delta R.T.: -0.004 min
 Response: 858802947
 Conc: 516.90 ng/ml



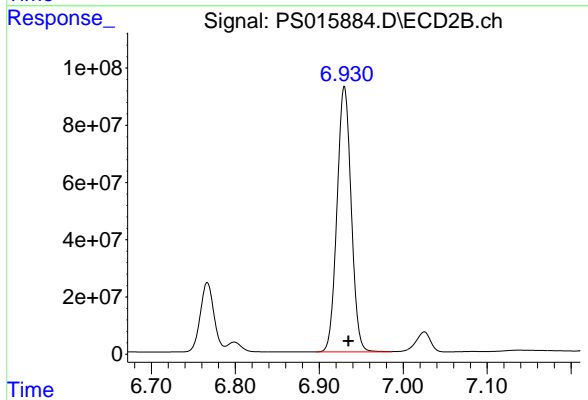
#4 2,4-DCAA
 R.T.: 6.767 min
 Delta R.T.: -0.004 min
 Response: 273328212
 Conc: 542.48 ng/ml



#5 DICAMBA

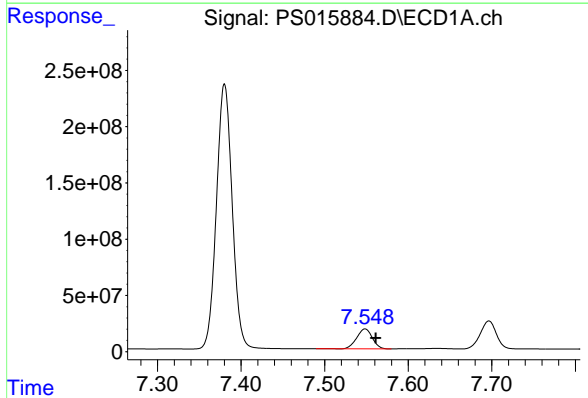
R.T.: 7.380 min
 Delta R.T.: -0.005 min
 Response: 3073073360
 Conc: 478.00 ng/ml

Instrument :
 ECD_S
 ClientSampleId :
 PB136975BS



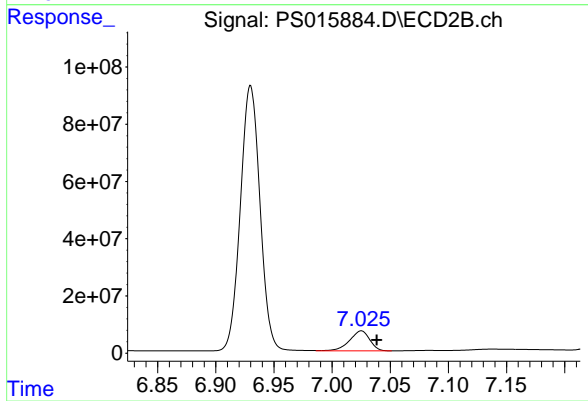
#5 DICAMBA

R.T.: 6.930 min
 Delta R.T.: -0.005 min
 Response: 1089836444
 Conc: 525.23 ng/ml



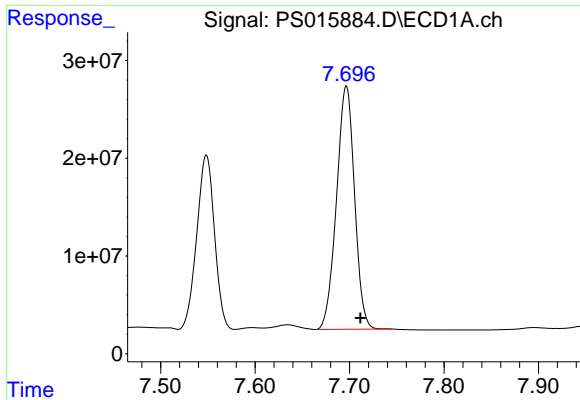
#6 MCP

R.T.: 7.548 min
 Delta R.T.: -0.013 min
 Response: 230114491
 Conc: 42.37 ug/ml



#6 MCP

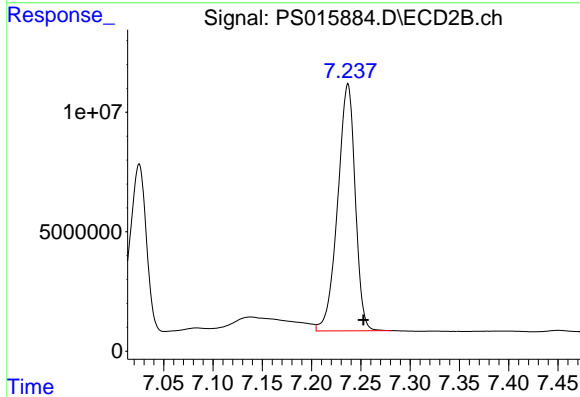
R.T.: 7.025 min
 Delta R.T.: -0.013 min
 Response: 84591557
 Conc: 50.75 ug/ml



#7 MCPA

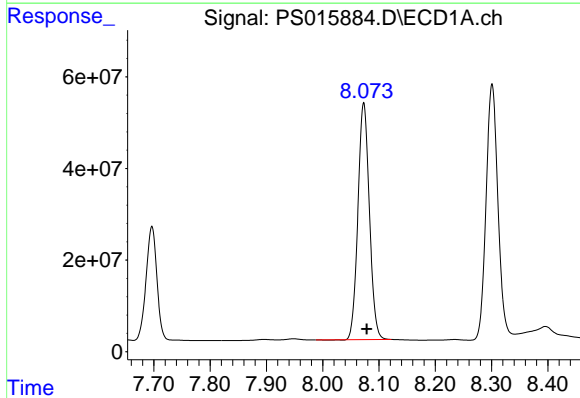
R.T.: 7.697 min
 Delta R.T.: -0.015 min
 Response: 330315745
 Conc: 42.20 ug/ml

Instrument :
 ECD_S
 ClientSampleId :
 PB136975BS



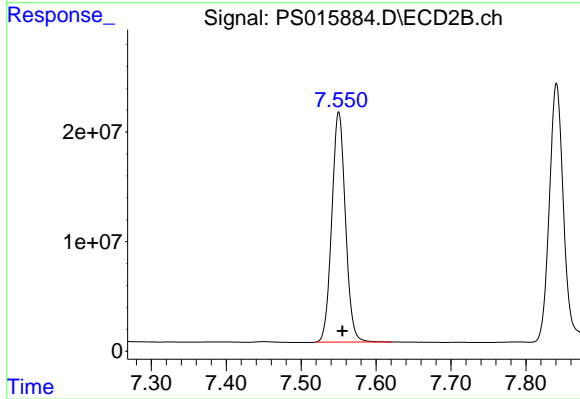
#7 MCPA

R.T.: 7.237 min
 Delta R.T.: -0.016 min
 Response: 127915279
 Conc: 49.86 ug/ml



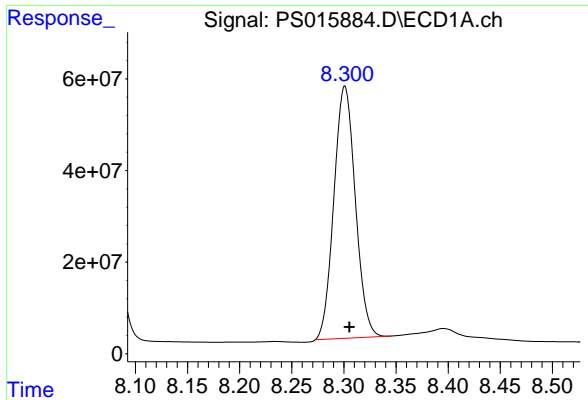
#8 DICHLORPROP

R.T.: 8.073 min
 Delta R.T.: -0.006 min
 Response: 730827295
 Conc: 461.57 ng/ml



#8 DICHLORPROP

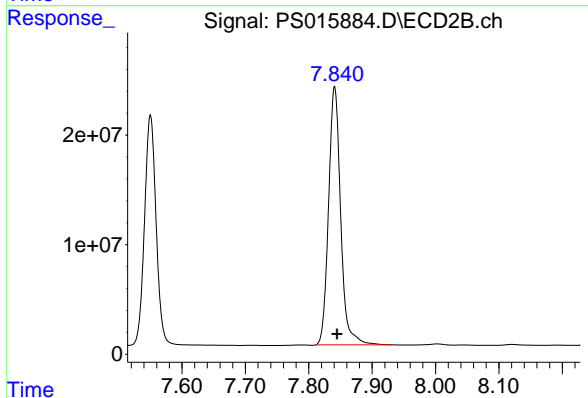
R.T.: 7.550 min
 Delta R.T.: -0.005 min
 Response: 265553456
 Conc: 512.90 ng/ml



#9 2,4-D

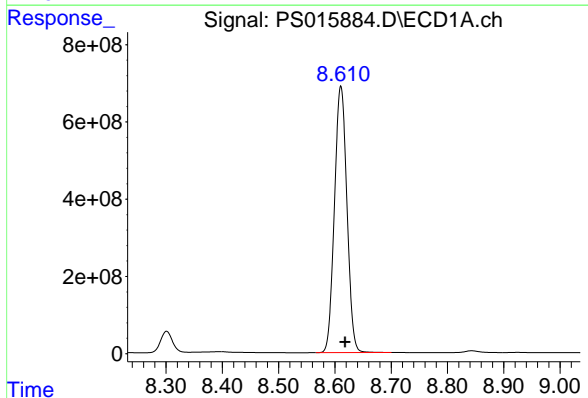
R.T.: 8.301 min
 Delta R.T.: -0.004 min
 Response: 787957404
 Conc: 449.60 ng/ml

Instrument :
 ECD_S
 ClientSampleId :
 PB136975BS



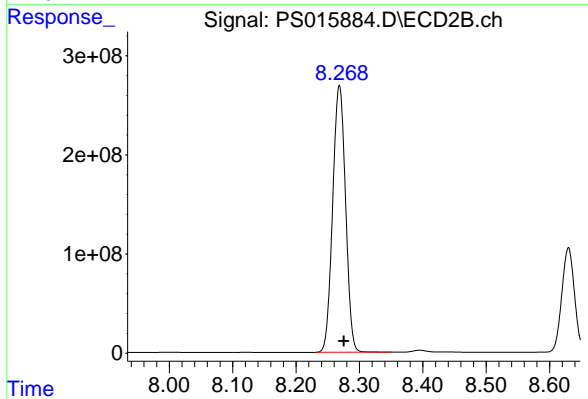
#9 2,4-D

R.T.: 7.841 min
 Delta R.T.: -0.004 min
 Response: 313229791
 Conc: 504.97 ng/ml



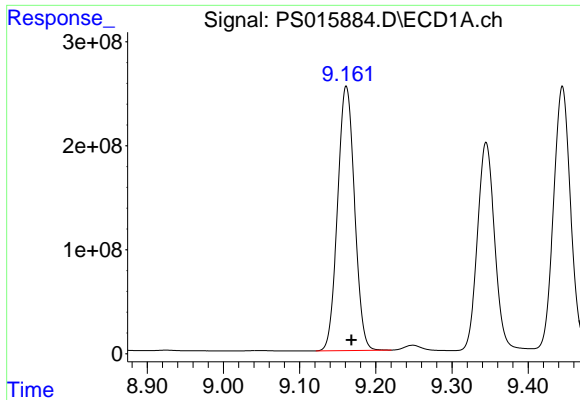
#10 Pentachlorophenol

R.T.: 8.611 min
 Delta R.T.: -0.007 min
 Response: 10605192325
 Conc: 491.36 ng/ml



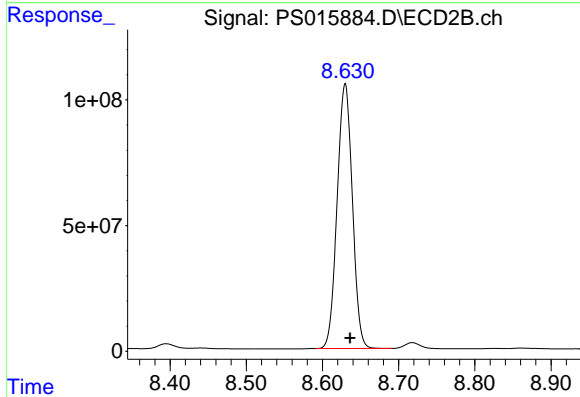
#10 Pentachlorophenol

R.T.: 8.268 min
 Delta R.T.: -0.007 min
 Response: 3801558598
 Conc: 541.25 ng/ml

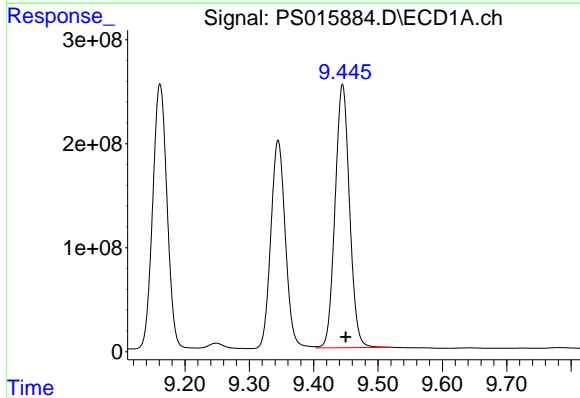


#11 2,4,5-TP (SILVEX)
 R.T.: 9.161 min
 Delta R.T.: -0.007 min
 Response: 3926839603
 Conc: 449.23 ng/ml

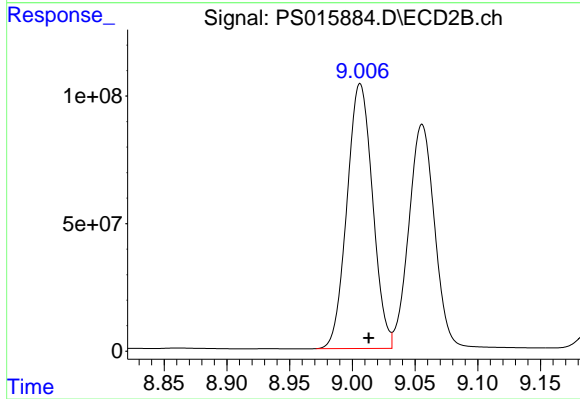
Instrument :
 ECD_S
ClientSampleId :
 PB136975BS



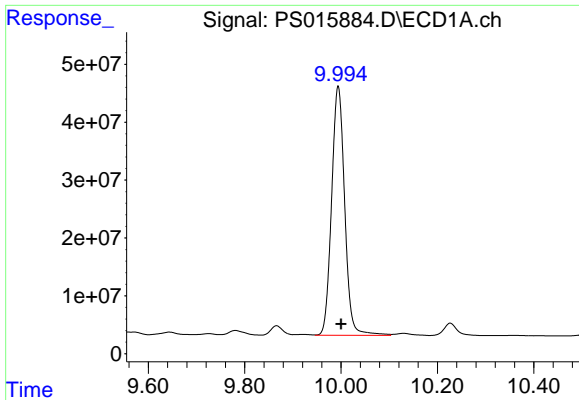
#11 2,4,5-TP (SILVEX)
 R.T.: 8.630 min
 Delta R.T.: -0.007 min
 Response: 1462668030
 Conc: 529.81 ng/ml



#12 2,4,5-T
 R.T.: 9.445 min
 Delta R.T.: -0.005 min
 Response: 3953080064
 Conc: 447.77 ng/ml

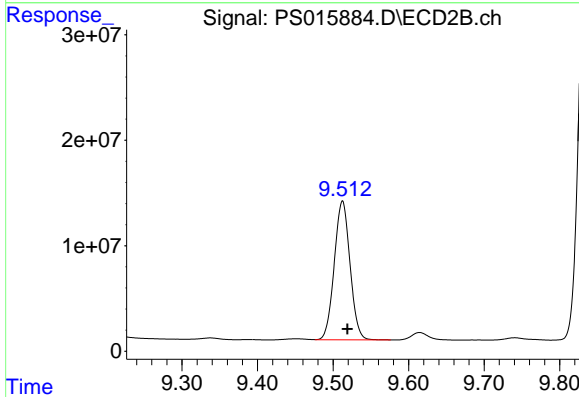


#12 2,4,5-T
 R.T.: 9.006 min
 Delta R.T.: -0.007 min
 Response: 1475143602
 Conc: 523.02 ng/ml

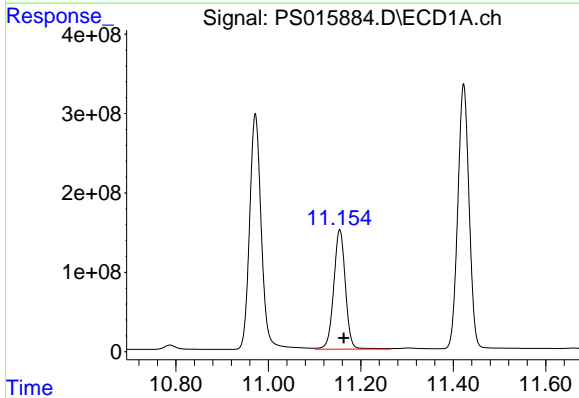


#13 2,4-DB
 R.T.: 9.994 min
 Delta R.T.: -0.006 min
 Response: 810237708
 Conc: 396.10 ng/ml

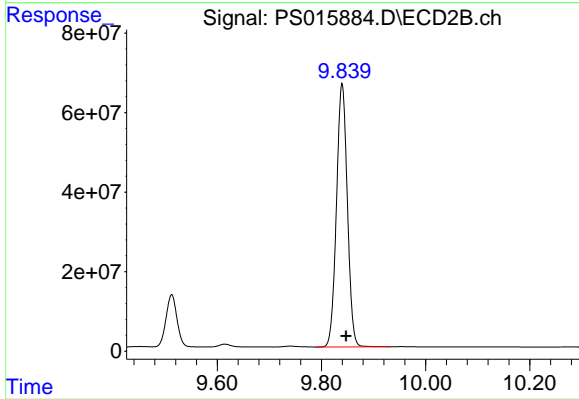
Instrument :
 ECD_S
ClientSampleId :
 PB136975BS



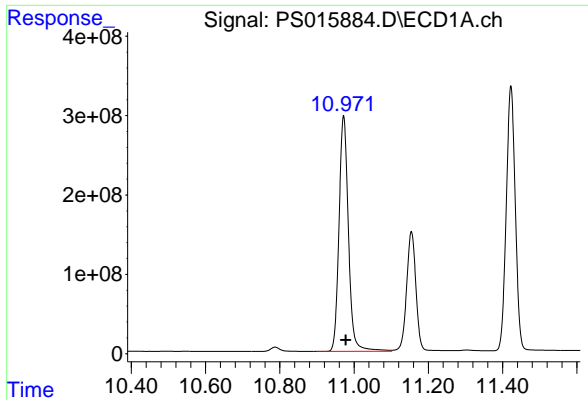
#13 2,4-DB
 R.T.: 9.512 min
 Delta R.T.: -0.006 min
 Response: 190675293
 Conc: 510.52 ng/ml



#14 DINOSEB
 R.T.: 11.154 min
 Delta R.T.: -0.009 min
 Response: 2638982067
 Conc: 407.47 ng/ml



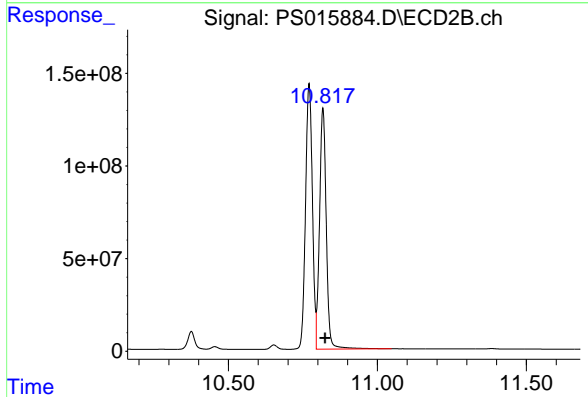
#14 DINOSEB
 R.T.: 9.840 min
 Delta R.T.: -0.008 min
 Response: 961168002
 Conc: 477.21 ng/ml



#15 Picloram

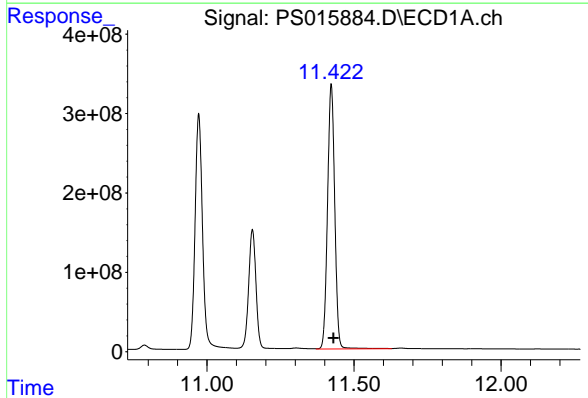
R.T.: 10.972 min
 Delta R.T.: -0.006 min
 Response: 5224335823
 Conc: 382.15 ng/ml

Instrument :
 ECD_S
 ClientSampleId :
 PB136975BS



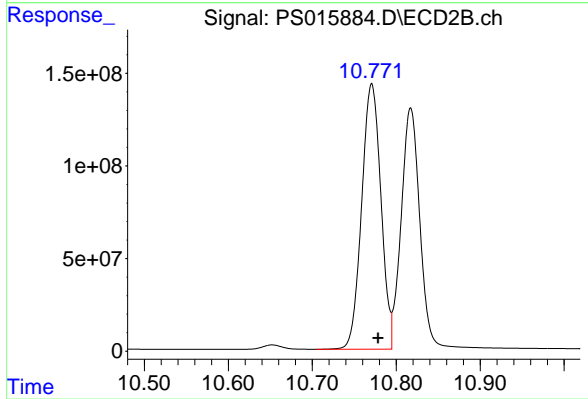
#15 Picloram

R.T.: 10.817 min
 Delta R.T.: -0.007 min
 Response: 2040673782
 Conc: 485.23 ng/ml



#16 DCPA

R.T.: 11.422 min
 Delta R.T.: -0.008 min
 Response: 5690785408
 Conc: 430.26 ng/ml



#16 DCPA

R.T.: 10.771 min
 Delta R.T.: -0.008 min
 Response: 2278157750
 Conc: 541.87 ng/ml