

Data Path : Z:\pestpcbsrv\HPCHEM1\ECD_S\Data\PS061923\
 Data File : PS023314.D
 Signal(s) : Signal #1: ECD1A.ch Signal #2: ECD2B.ch
 Acq On : 19 Jun 2023 10:32
 Operator : AR\AJ
 Sample : HSTDCCC750
 Misc :
 ALS Vial : 3 Sample Multiplier: 1

Instrument :
 ECD_S
 ClientSampleId :

Integration File signal 1: autoint1.e
 Integration File signal 2: autoint2.e
 Quant Time: Jun 19 13:31:39 2023
 Quant Method : Z:\pestpcbsrv\HPCHEM1\ECD_S\Method\PS060623.M
 Quant Title : 8080.M
 QLast Update : Tue Jun 06 13:00:04 2023
 Response via : Initial Calibration
 Integrator: ChemStation

Volume Inj. : 2 µl
 Signal #1 Phase : Rtx-CLPesticides Signal #2 Phase: Rtx-CLPesticides2
 Signal #1 Info : 30M x 0.32mm x0.5 Signal #2 Info : 30M x 0.32mm x 0.25µm

	Compound	RT#1	RT#2	Resp#1	Resp#2	ng/ml	ng/ml

System Monitoring Compounds							
4) S	2,4-DCAA	6.481	6.853	1308.0E6	418.4E6	739.281	736.989
Target Compounds							
1) T	Dalapon	2.549	2.575	1253.4E6	619.0E6	685.464	675.289
2) T	3,5-DICHL...	5.834	6.020	1865.1E6	618.6E6	694.242	698.867
3) T	4-Nitroph...	6.313	6.459	878.9E6	224.3E6	681.971	657.591
5) T	DICAMBA	6.629	7.020	5542.2E6	1826.5E6	711.104	712.725
6) T	MCP P	6.788	7.115	406.4E6	128.5E6	73.732	71.885
7) T	MCPA	6.917	7.325	558.6E6	184.2E6	71.342	68.546
8) T	DICHLORPROP	7.238	7.641	1428.9E6	431.4E6	692.466	697.439
9) T	2,4-D	7.440	7.929	1688.0E6	482.0E6	690.874	694.980
10) T	Pentachlo...	7.674	8.359	20159.4E6	6524.6E6	715.397	721.204
11) T	2,4,5-TP ...	8.210	8.719	8266.9E6	2400.1E6	714.929	719.168
12) T	2,4,5-T	8.471	9.092	8059.2E6	2161.1E6	709.427	704.953
13) T	2,4-DB	8.986	9.598	1580.1E6	263.3E6	671.222	710.124
14) T	DINOSEB	10.060	9.927	5815.0E6	1685.8E6	702.113	710.373
15) T	Picloram	9.881	10.891	11804.7E6	3040.1E6	680.210	666.123
16) T	DCPA	10.329	10.855	9963.5E6	2900.3E6	714.716	722.939

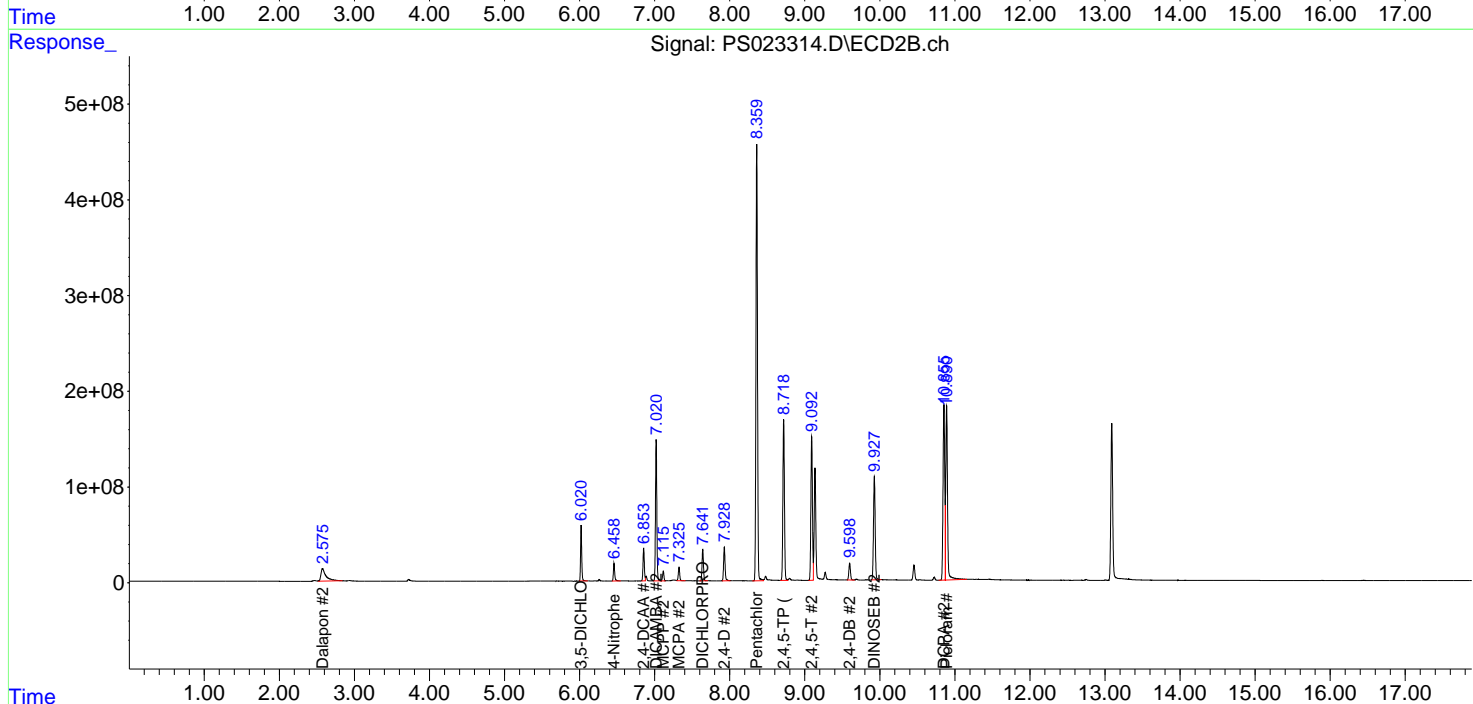
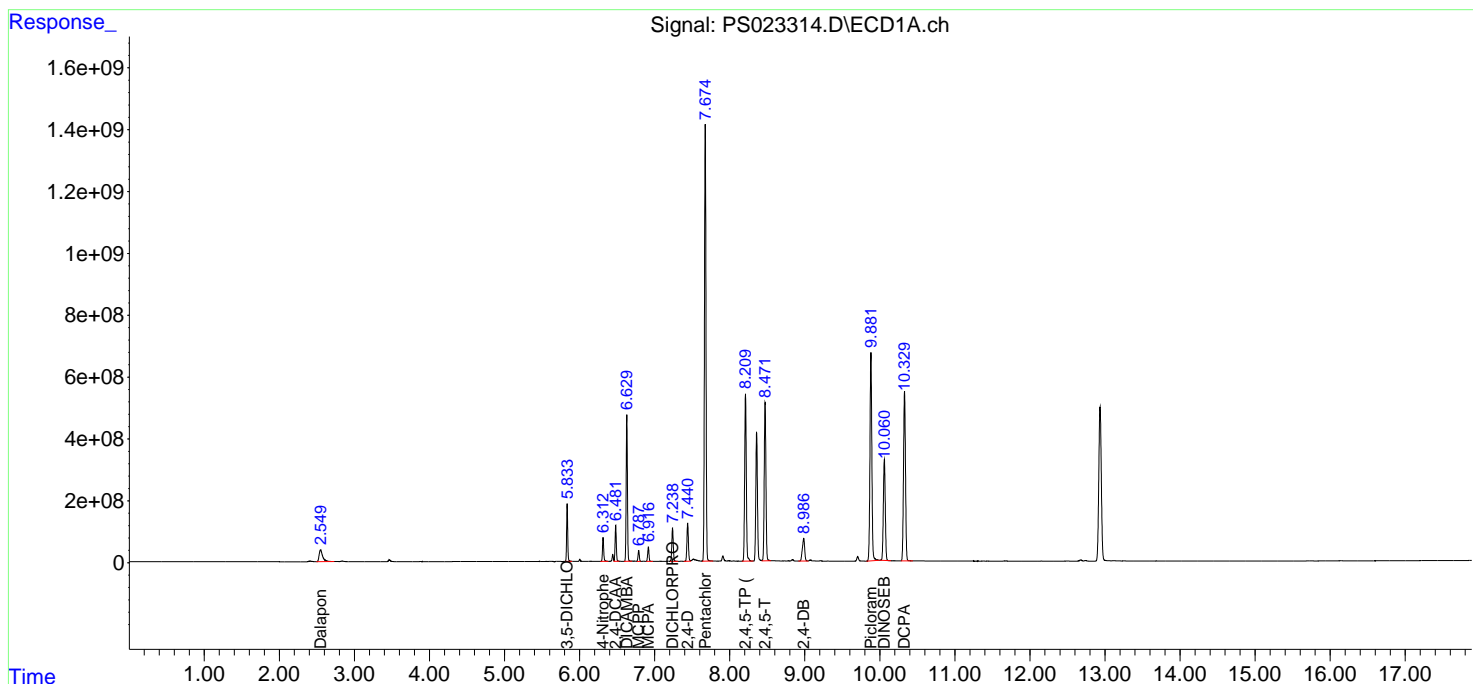
(f)=RT Delta > 1/2 Window (#)=Amounts differ by > 25% (m)=manual int.

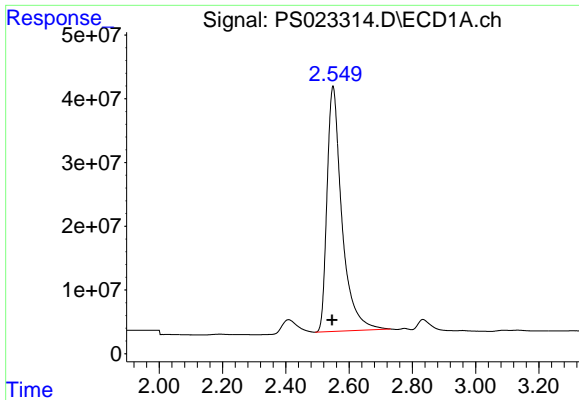
Data Path : Z:\pestpcbsrv\HPCHEM1\ECD_S\Data\PS061923\
 Data File : PS023314.D
 Signal(s) : Signal #1: ECD1A.ch Signal #2: ECD2B.ch
 Acq On : 19 Jun 2023 10:32
 Operator : AR\AJ
 Sample : HSTDCCC750
 Misc :
 ALS Vial : 3 Sample Multiplier: 1

Instrument :
 ECD_S
 ClientSampleId :

Integration File signal 1: autoint1.e
 Integration File signal 2: autoint2.e
 Quant Time: Jun 19 13:31:39 2023
 Quant Method : Z:\pestpcbsrv\HPCHEM1\ECD_S\Method\PS060623.M
 Quant Title : 8080.M
 QLast Update : Tue Jun 06 13:00:04 2023
 Response via : Initial Calibration
 Integrator: ChemStation

Volume Inj. : 2 µl
 Signal #1 Phase : Rtx-CLPesticides Signal #2 Phase: Rtx-CLPesticides2
 Signal #1 Info : 30M x 0.32mm x0.5 Signal #2 Info : 30M x 0.32mm x 0.25µm

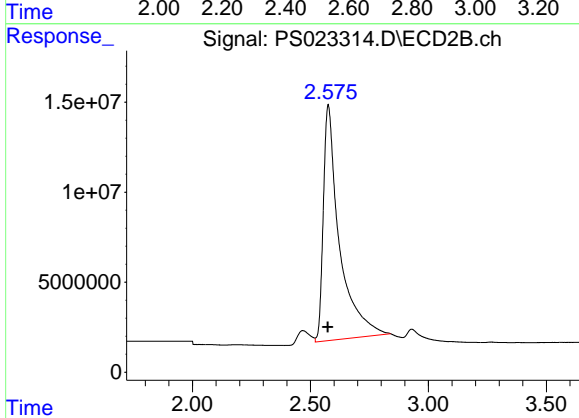




#1 Dalapon

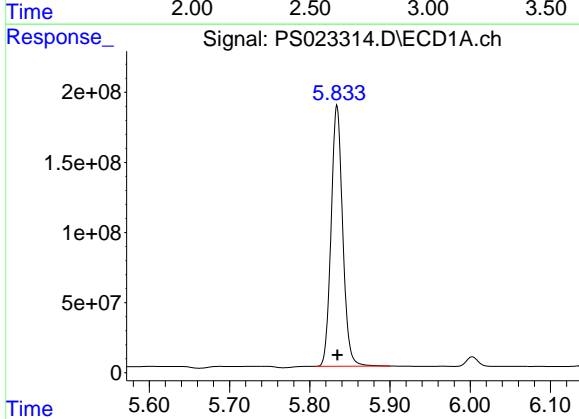
R.T.: 2.549 min
Delta R.T.: 0.002 min
Response: 1253391796
Conc: 685.46 ng/ml

Instrument :
ECD_S
ClientSampleId :



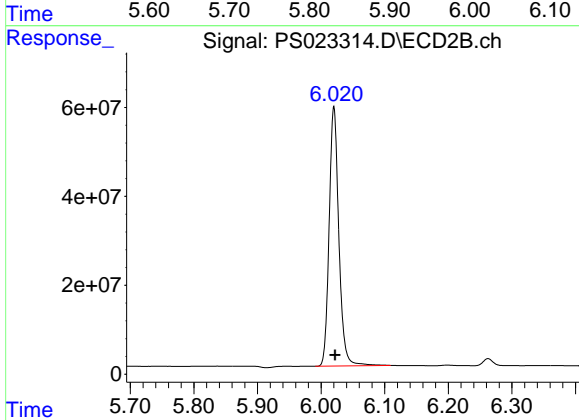
#1 Dalapon

R.T.: 2.575 min
Delta R.T.: 0.002 min
Response: 619004250
Conc: 675.29 ng/ml



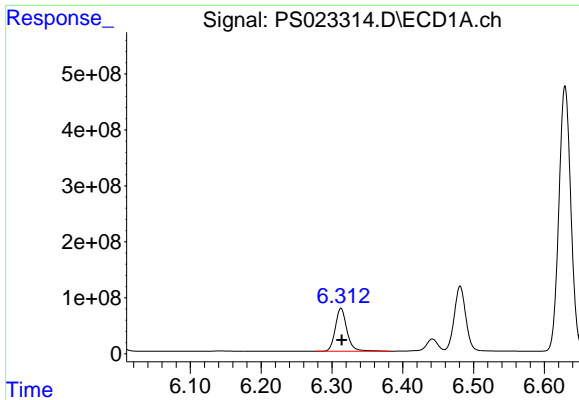
#2 3,5-DICHLOROBENZOIC ACID

R.T.: 5.834 min
Delta R.T.: 0.000 min
Response: 1865145798
Conc: 694.24 ng/ml



#2 3,5-DICHLOROBENZOIC ACID

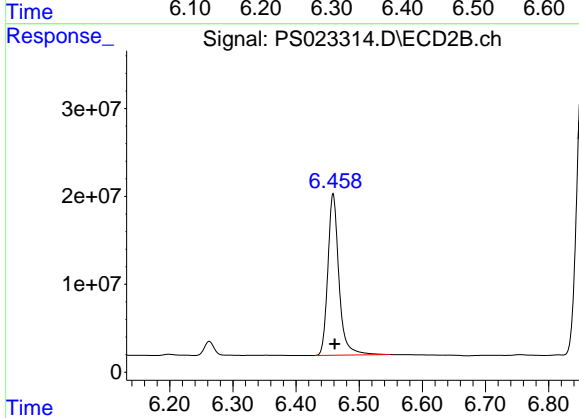
R.T.: 6.020 min
Delta R.T.: -0.002 min
Response: 618626502
Conc: 698.87 ng/ml



#3 4-Nitrophenol

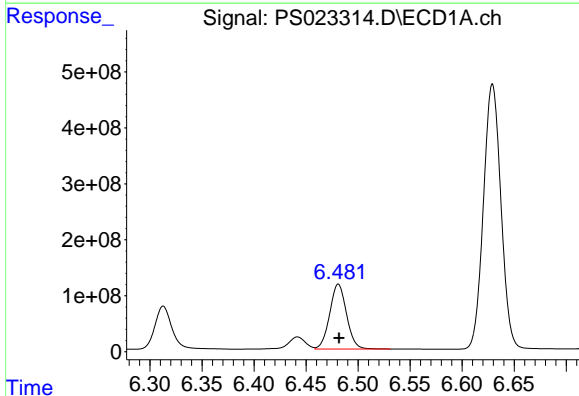
R.T.: 6.313 min
Delta R.T.: -0.001 min
Response: 878944054
Conc: 681.97 ng/ml

Instrument :
ECD_S
ClientSampleId :



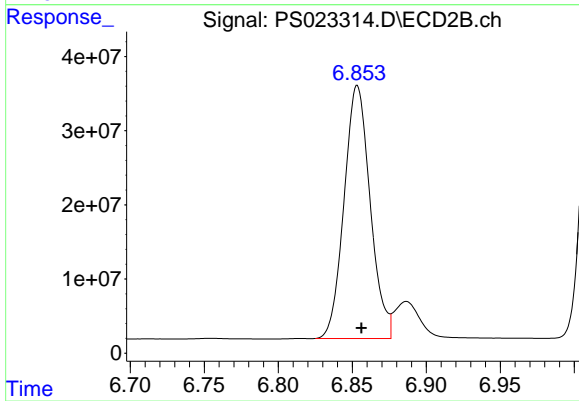
#3 4-Nitrophenol

R.T.: 6.459 min
Delta R.T.: -0.002 min
Response: 224343000
Conc: 657.59 ng/ml



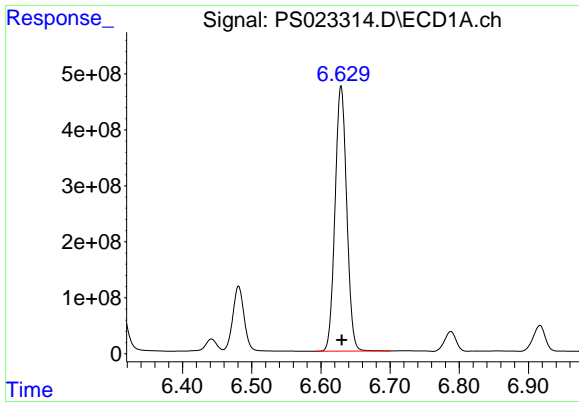
#4 2,4-DCAA

R.T.: 6.481 min
Delta R.T.: 0.000 min
Response: 1307978280
Conc: 739.28 ng/ml



#4 2,4-DCAA

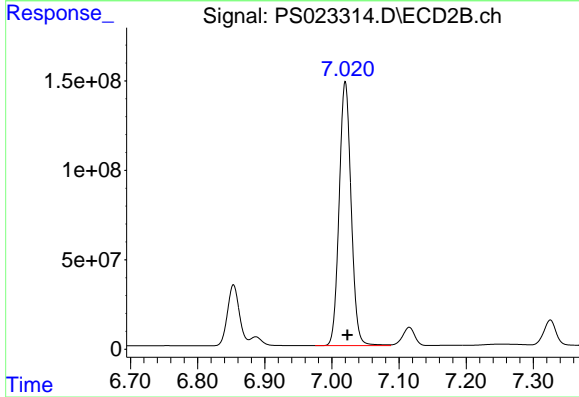
R.T.: 6.853 min
Delta R.T.: -0.003 min
Response: 418385489
Conc: 736.99 ng/ml



#5 DICAMBA

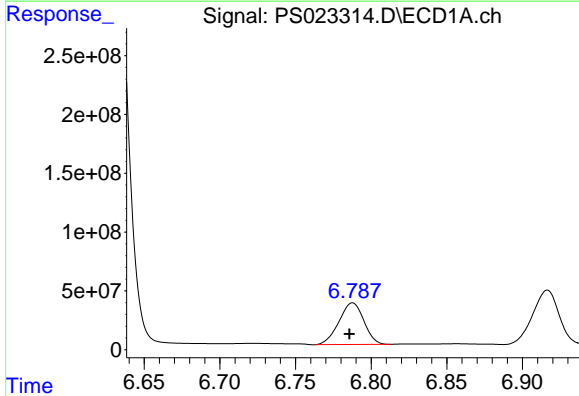
R.T.: 6.629 min
 Delta R.T.: 0.000 min
 Response: 5542162570
 Conc: 711.10 ng/ml

Instrument :
 ECD_S
 ClientSampleId :



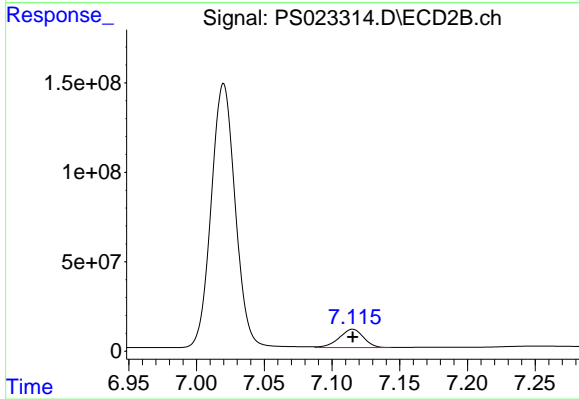
#5 DICAMBA

R.T.: 7.020 min
 Delta R.T.: -0.003 min
 Response: 1826502495
 Conc: 712.72 ng/ml



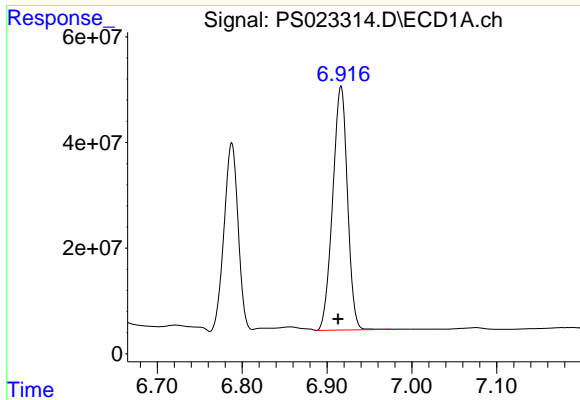
#6 MCP

R.T.: 6.788 min
 Delta R.T.: 0.002 min
 Response: 406375056
 Conc: 73.73 ug/ml



#6 MCP

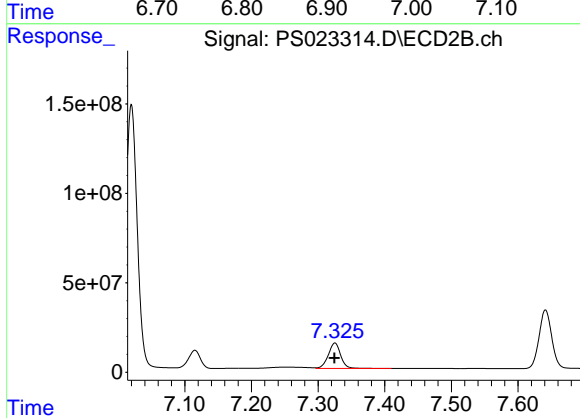
R.T.: 7.115 min
 Delta R.T.: 0.000 min
 Response: 128508216
 Conc: 71.89 ug/ml



#7 MCPA

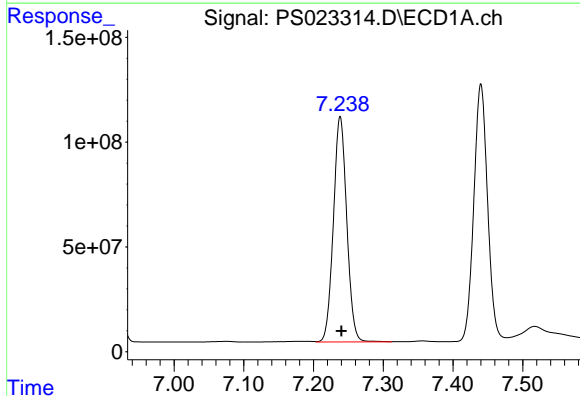
R.T.: 6.917 min
 Delta R.T.: 0.003 min
 Response: 558583145
 Conc: 71.34 ug/ml

Instrument :
 ECD_S
 ClientSampleId :



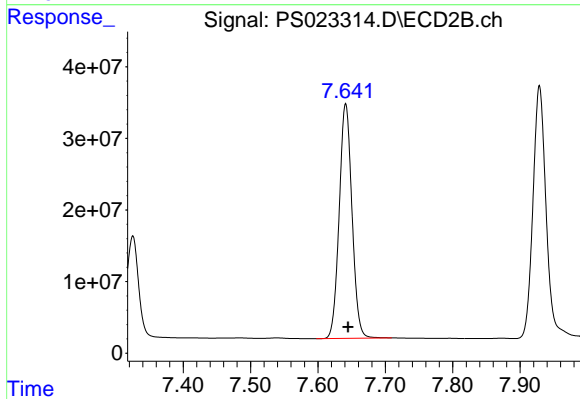
#7 MCPA

R.T.: 7.325 min
 Delta R.T.: 0.000 min
 Response: 184224230
 Conc: 68.55 ug/ml



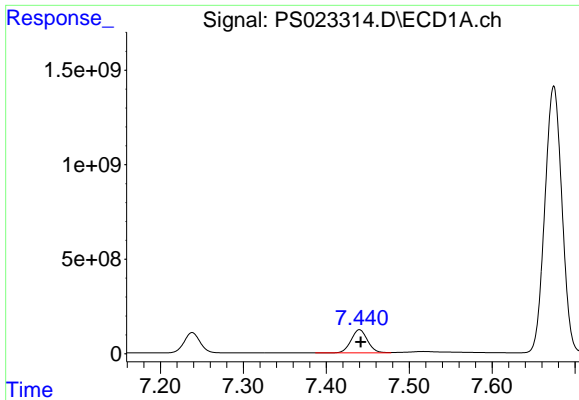
#8 DICHLORPROP

R.T.: 7.238 min
 Delta R.T.: -0.001 min
 Response: 1428921532
 Conc: 692.47 ng/ml



#8 DICHLORPROP

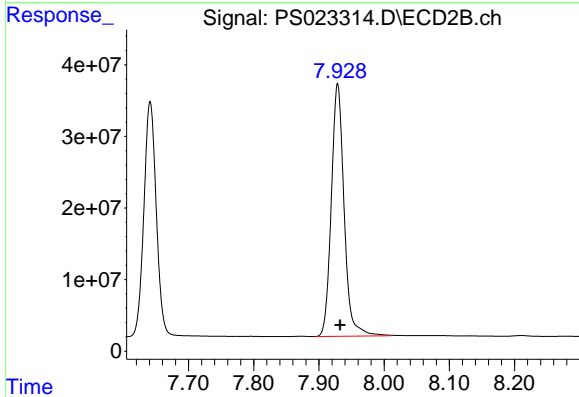
R.T.: 7.641 min
 Delta R.T.: -0.003 min
 Response: 431426051
 Conc: 697.44 ng/ml



#9 2,4-D

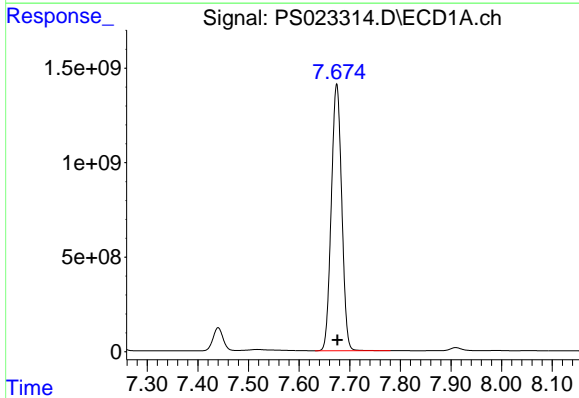
R.T.: 7.440 min
Delta R.T.: -0.002 min
Response: 1688008508
Conc: 690.87 ng/ml

Instrument :
ECD_S
ClientSampleId :



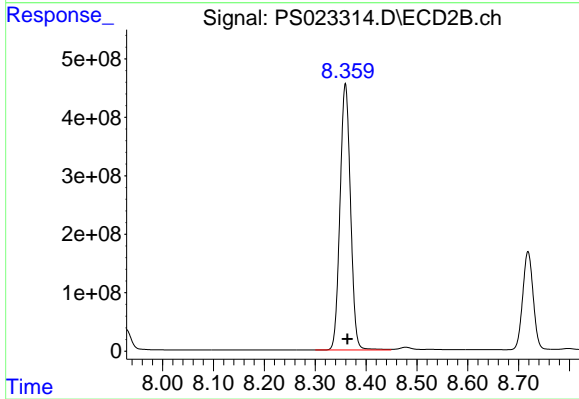
#9 2,4-D

R.T.: 7.929 min
Delta R.T.: -0.004 min
Response: 481981354
Conc: 694.98 ng/ml



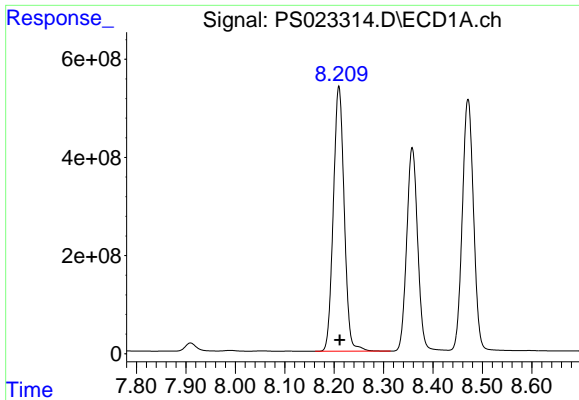
#10 Pentachlorophenol

R.T.: 7.674 min
Delta R.T.: -0.001 min
Response: 20159422751
Conc: 715.40 ng/ml



#10 Pentachlorophenol

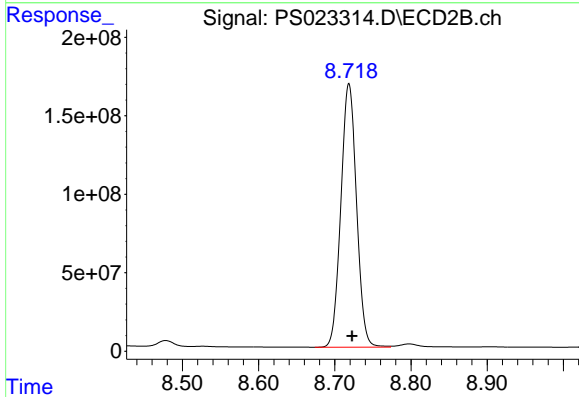
R.T.: 8.359 min
Delta R.T.: -0.004 min
Response: 6524625187
Conc: 721.20 ng/ml



#11 2,4,5-TP (SILVEX)

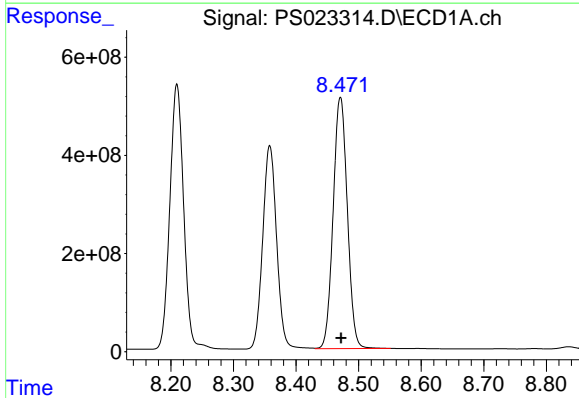
R.T.: 8.210 min
 Delta R.T.: -0.001 min
 Response: 8266850794
 Conc: 714.93 ng/ml

Instrument :
 ECD_S
 ClientSampleId :



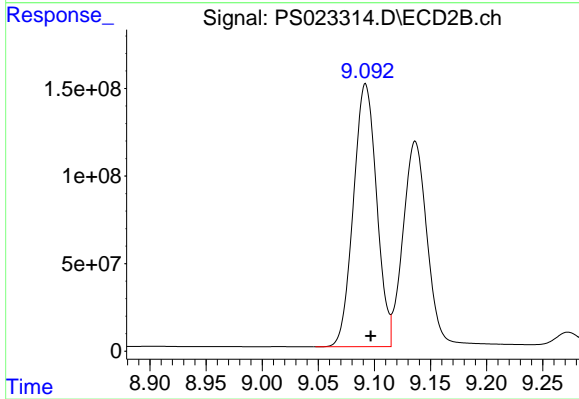
#11 2,4,5-TP (SILVEX)

R.T.: 8.719 min
 Delta R.T.: -0.004 min
 Response: 2400098080
 Conc: 719.17 ng/ml



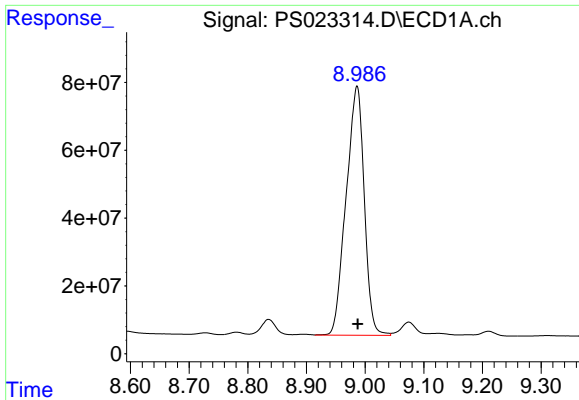
#12 2,4,5-T

R.T.: 8.471 min
 Delta R.T.: -0.001 min
 Response: 8059230056
 Conc: 709.43 ng/ml



#12 2,4,5-T

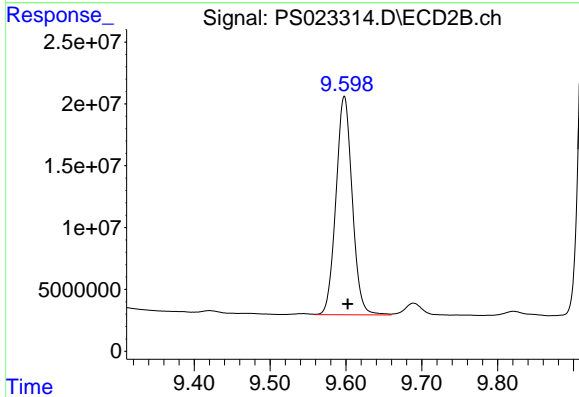
R.T.: 9.092 min
 Delta R.T.: -0.005 min
 Response: 2161074975
 Conc: 704.95 ng/ml



#13 2,4-DB

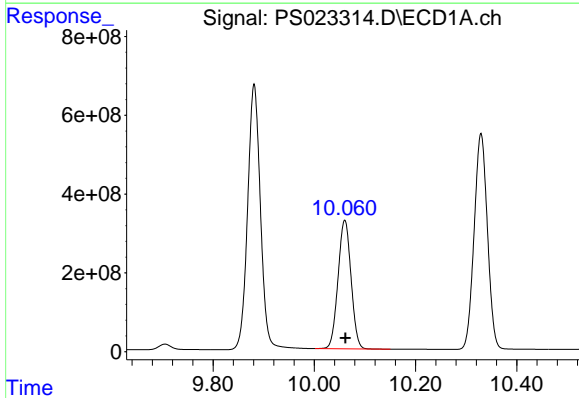
R.T.: 8.986 min
 Delta R.T.: -0.001 min
 Response: 1580124314
 Conc: 671.22 ng/ml

Instrument :
 ECD_S
 ClientSampleId :



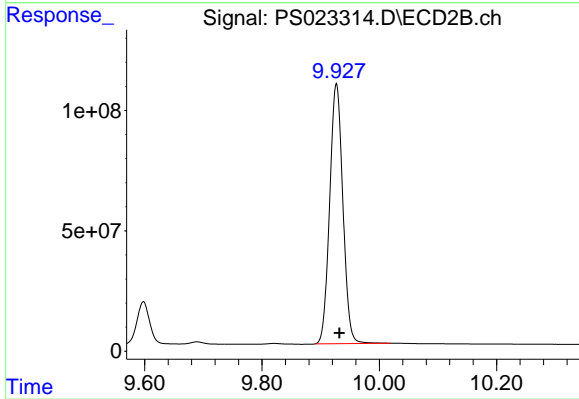
#13 2,4-DB

R.T.: 9.598 min
 Delta R.T.: -0.004 min
 Response: 263315440
 Conc: 710.12 ng/ml



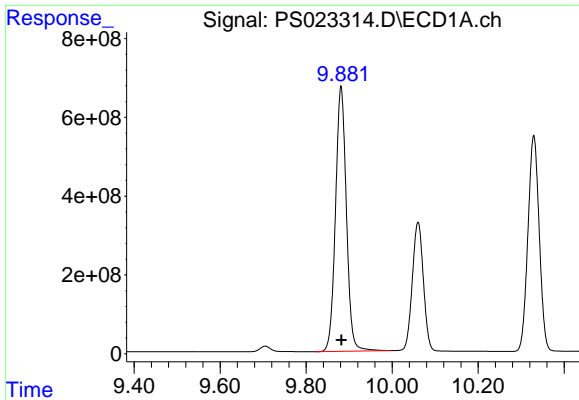
#14 DINOSEB

R.T.: 10.060 min
 Delta R.T.: -0.001 min
 Response: 5815044671
 Conc: 702.11 ng/ml



#14 DINOSEB

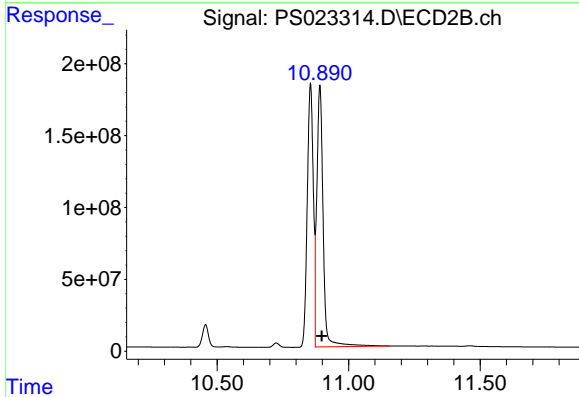
R.T.: 9.927 min
 Delta R.T.: -0.005 min
 Response: 1685751941
 Conc: 710.37 ng/ml



#15 Picloram

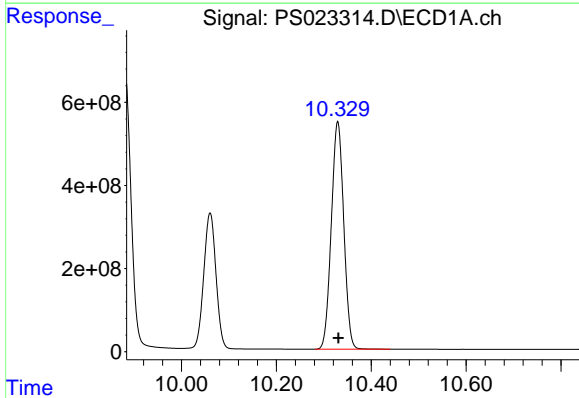
R.T.: 9.881 min
 Delta R.T.: -0.001 min
 Response: 11804740836
 Conc: 680.21 ng/ml

Instrument :
 ECD_S
 ClientSampleId :



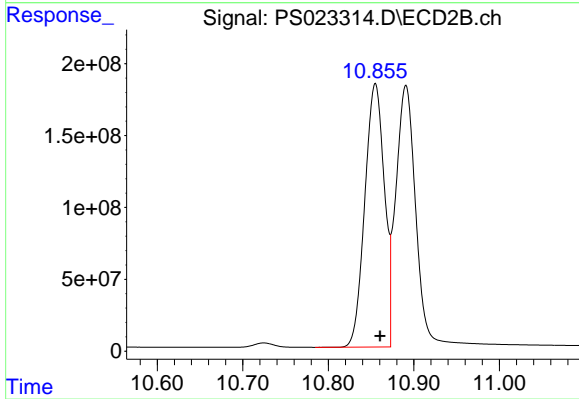
#15 Picloram

R.T.: 10.891 min
 Delta R.T.: -0.007 min
 Response: 3040065550
 Conc: 666.12 ng/ml



#16 DCPA

R.T.: 10.329 min
 Delta R.T.: -0.001 min
 Response: 9963528820
 Conc: 714.72 ng/ml



#16 DCPA

R.T.: 10.855 min
 Delta R.T.: -0.005 min
 Response: 2900326633
 Conc: 722.94 ng/ml