

Data Path : Z:\pestpcbsrv\HPCHEM1\ECD_S\Data\PS061923\
 Data File : PS023318.D
 Signal(s) : Signal #1: ECD1A.ch Signal #2: ECD2B.ch
 Acq On : 19 Jun 2023 12:29
 Operator : AR\AJ
 Sample : 03229-09
 Misc :
 ALS Vial : 7 Sample Multiplier: 1

Instrument :
 ECD_S
 ClientSampleId :

Integration File signal 1: autoint1.e
 Integration File signal 2: autoint2.e
 Quant Time: Jun 19 13:32:58 2023
 Quant Method : Z:\pestpcbsrv\HPCHEM1\ECD_S\Method\PS060623.M
 Quant Title : 8080.M
 QLast Update : Tue Jun 06 13:00:04 2023
 Response via : Initial Calibration
 Integrator: ChemStation

Volume Inj. : 2 µl
 Signal #1 Phase : Rtx-CLPesticides Signal #2 Phase: Rtx-CLPesticides2
 Signal #1 Info : 30M x 0.32mm x0.5 Signal #2 Info : 30M x 0.32mm x 0.25µm

	Compound	RT#1	RT#2	Resp#1	Resp#2	ng/ml	ng/ml

System Monitoring Compounds							
4) S	2,4-DCAA	6.483	6.857	774.0E6	167.4E6	437.458	294.927 #
Target Compounds							
1) T	Dalapon	2.518	2.552	37733979	42634662	20.636	46.511 #
2) T	3,5-DICHL...	5.826	6.006	-4947041	2681464	N.D.	3.029
3) T	4-Nitroph...	6.310	0.000	23063714	0	17.895	N.D. #
6) T	MCPD	6.812	7.177f	9310957	1049775	1.689	<MDL #
7) T	MCPA	6.932	7.315	20409827	17139472	2.607	6.377 #
8) T	DICHLORPROP	7.263	7.661	2454337	6221713	1.189	10.058 #
9) T	2,4-D	7.377f	0.000	603322	0	<MDL	N.D. #
10) T	Pentachlo...	7.669	0.000	5686862	0	<MDL	N.D. #
11) T	2,4,5-TP ...	8.180	8.743	5389969	3333080	<MDL	<MDL #
12) T	2,4,5-T	8.486	9.145f	46244390	4232335	4.071	1.381 #
13) T	2,4-DB	9.004	9.612	27457010	1756437	11.663	4.737 #
14) T	DINOSEB	10.076	9.968	-11348595	23946240	N.D.	10.091
15) T	Picloram	9.884	10.898	42270307	8509812	2.436	1.865
16) T	DCPA	10.330	10.860	15260818	2852418	1.095	<MDL #

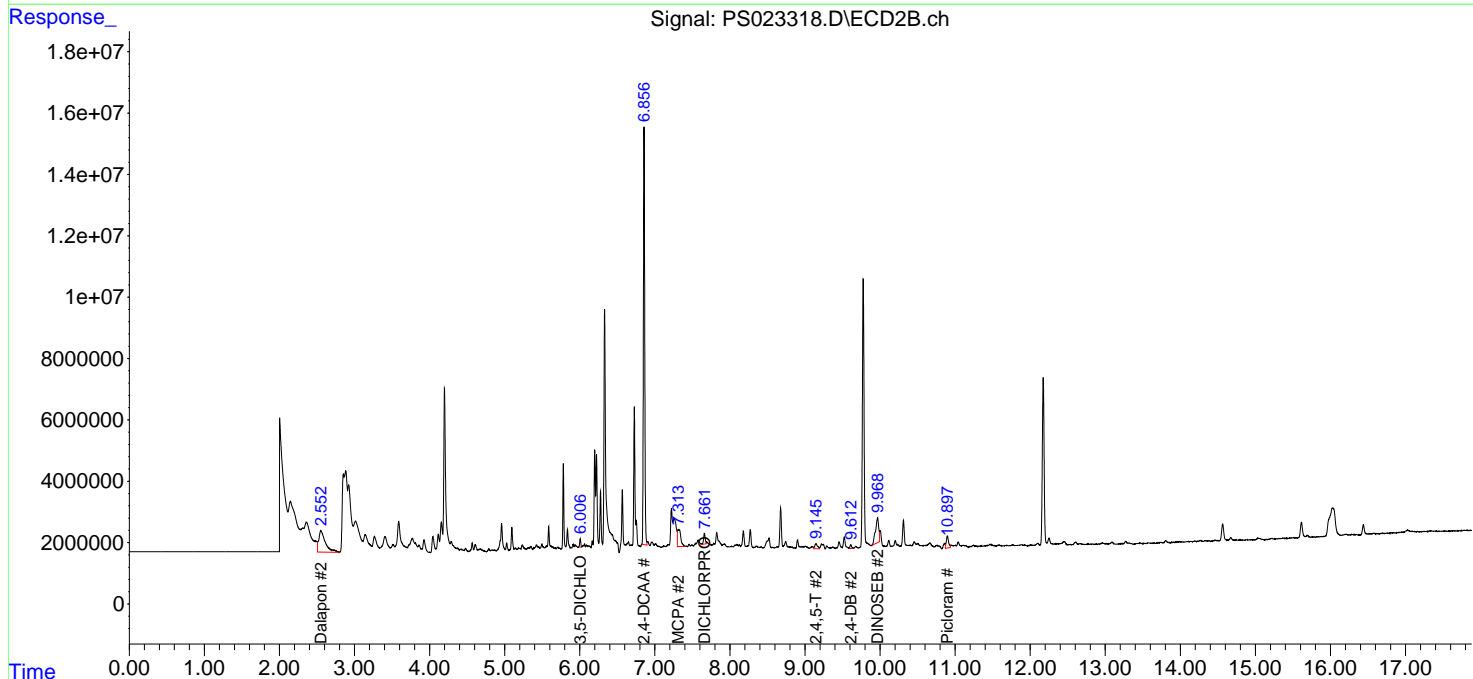
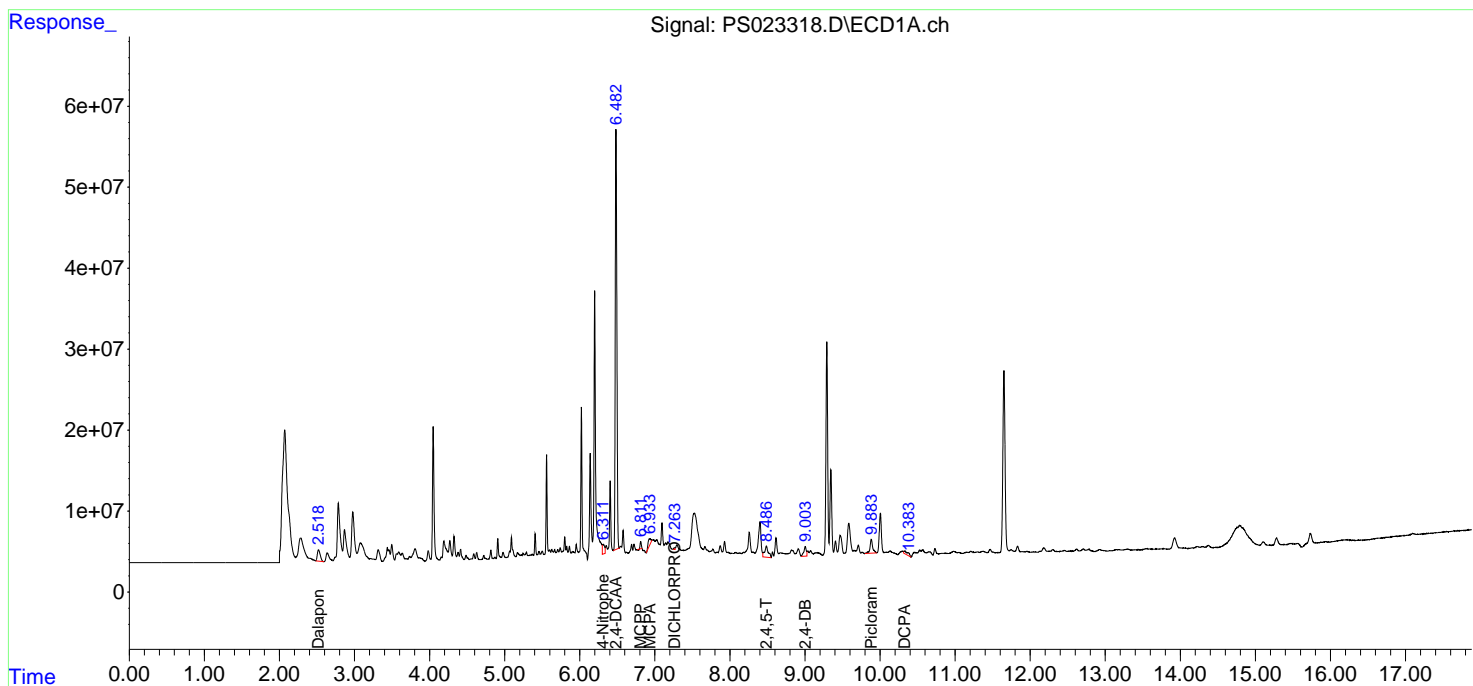
(f)=RT Delta > 1/2 Window (#)=Amounts differ by > 25% (m)=manual int.

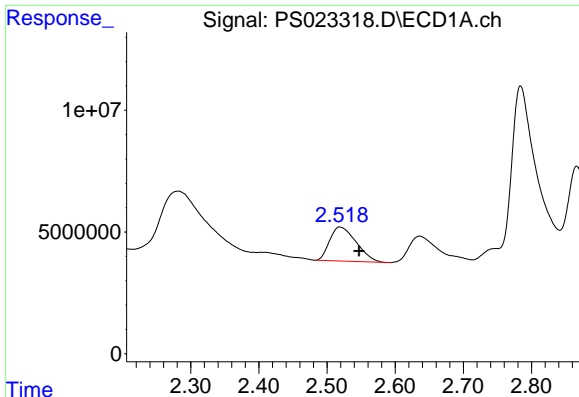
Data Path : Z:\pestpcbsrv\HPCHEM1\ECD_S\Data\PS061923\
 Data File : PS023318.D
 Signal(s) : Signal #1: ECD1A.ch Signal #2: ECD2B.ch
 Acq On : 19 Jun 2023 12:29
 Operator : AR\AJ
 Sample : 03229-09
 Misc :
 ALS Vial : 7 Sample Multiplier: 1

Instrument :
 ECD_S
 ClientSampleId :

Integration File signal 1: autoint1.e
 Integration File signal 2: autoint2.e
 Quant Time: Jun 19 13:32:58 2023
 Quant Method : Z:\pestpcbsrv\HPCHEM1\ECD_S\Method\PS060623.M
 Quant Title : 8080.M
 QLast Update : Tue Jun 06 13:00:04 2023
 Response via : Initial Calibration
 Integrator: ChemStation

Volume Inj. : 2 µl
 Signal #1 Phase : Rtx-CLPesticides Signal #2 Phase: Rtx-CLPesticides2
 Signal #1 Info : 30M x 0.32mm x0.5 Signal #2 Info : 30M x 0.32mm x 0.25µm

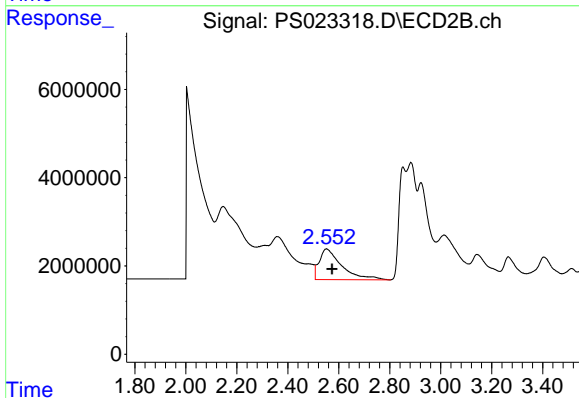




#1 Dalapon

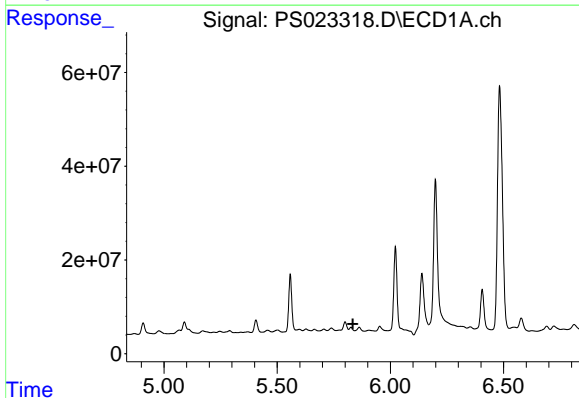
R.T.: 2.518 min
 Delta R.T.: -0.029 min
 Response: 37733979
 Conc: 20.64 ng/ml

Instrument :
 ECD_S
 ClientSampleId :



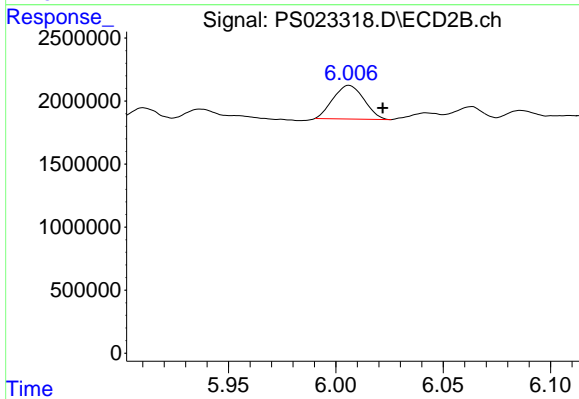
#1 Dalapon

R.T.: 2.552 min
 Delta R.T.: -0.022 min
 Response: 42634662
 Conc: 46.51 ng/ml



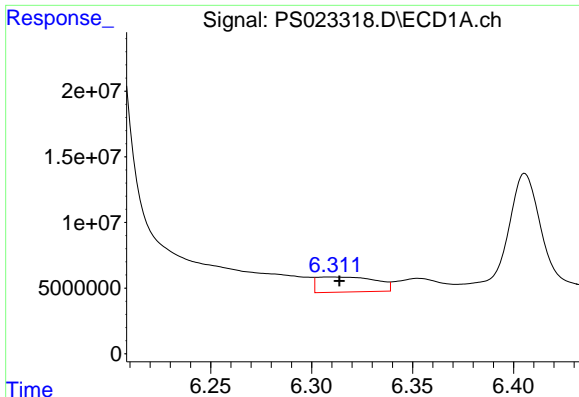
#2 3,5-DICHLOROBENZOIC ACID

R.T.: 5.826 min
 Delta R.T.: -0.009 min
 Response: -4947041
 Conc: N.D.



#2 3,5-DICHLOROBENZOIC ACID

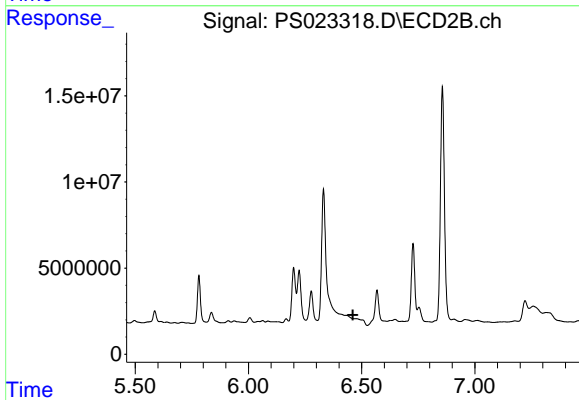
R.T.: 6.006 min
 Delta R.T.: -0.016 min
 Response: 2681464
 Conc: 3.03 ng/ml



#3 4-Nitrophenol

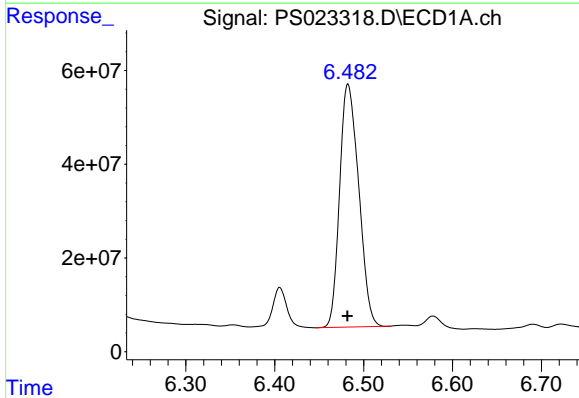
R.T.: 6.310 min
 Delta R.T.: -0.004 min
 Response: 23063714
 Conc: 17.90 ng/ml

Instrument :
 ECD_S
 ClientSampleId :



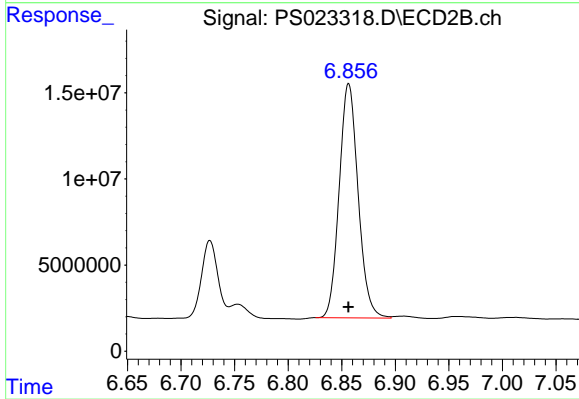
#3 4-Nitrophenol

R.T.: 0.000 min
 Exp R.T. : 6.461 min
 Response: 0
 Conc: N.D.



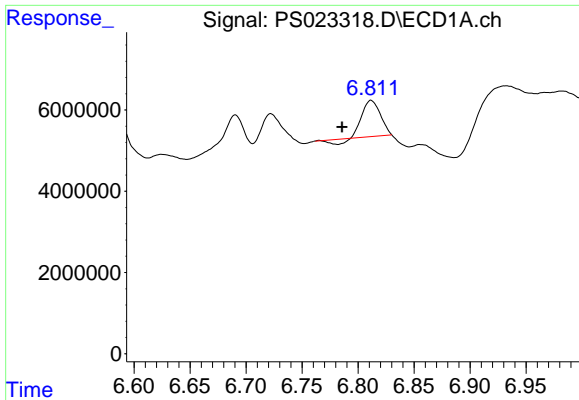
#4 2,4-DCAA

R.T.: 6.483 min
 Delta R.T.: 0.001 min
 Response: 773975558
 Conc: 437.46 ng/ml



#4 2,4-DCAA

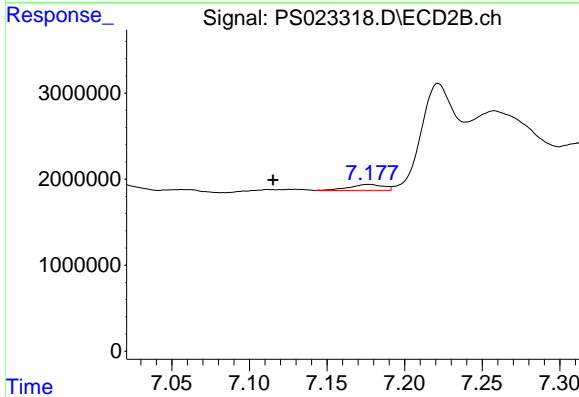
R.T.: 6.857 min
 Delta R.T.: 0.000 min
 Response: 167428678
 Conc: 294.93 ng/ml



#6 MCP

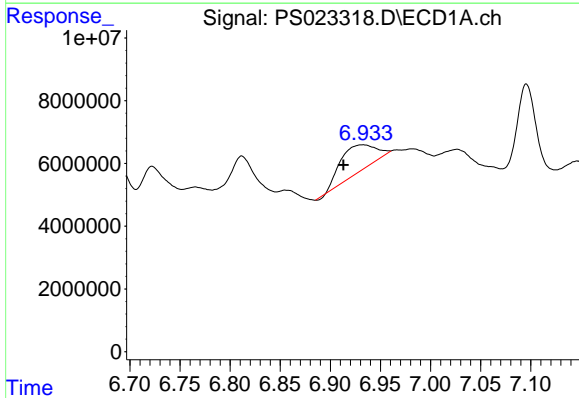
R.T.: 6.812 min
 Delta R.T.: 0.026 min
 Response: 9310957
 Conc: 1.69 ug/ml

Instrument :
 ECD_S
 ClientSampleId :



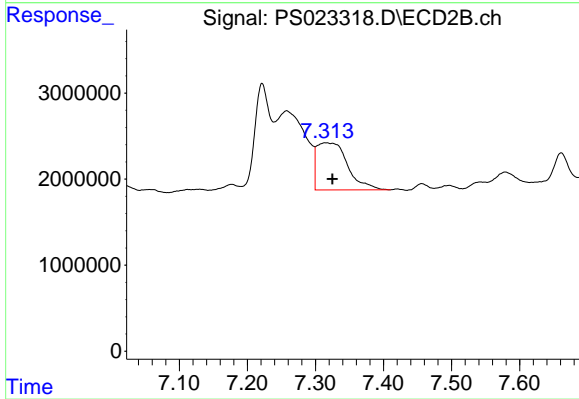
#6 MCP

R.T.: 7.177 min
 Delta R.T.: 0.062 min
 Response: 1049775
 Conc: N.D.



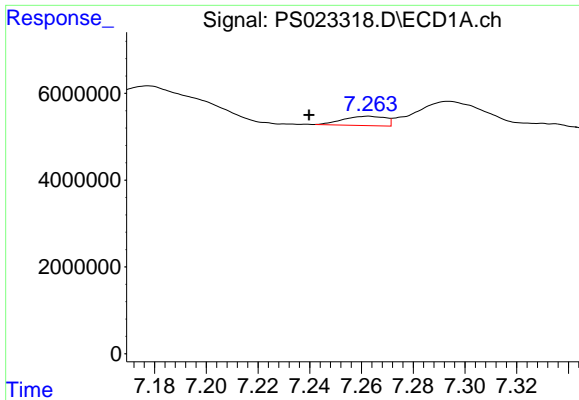
#7 MCPA

R.T.: 6.932 min
 Delta R.T.: 0.019 min
 Response: 20409827
 Conc: 2.61 ug/ml



#7 MCPA

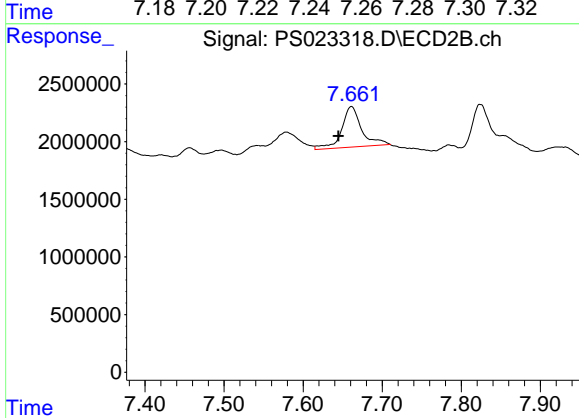
R.T.: 7.315 min
 Delta R.T.: -0.009 min
 Response: 17139472
 Conc: 6.38 ug/ml



#8 DICHLORPROP

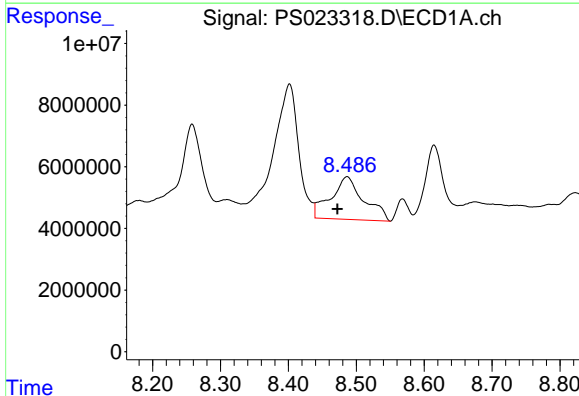
R.T.: 7.263 min
 Delta R.T.: 0.023 min
 Response: 2454337
 Conc: 1.19 ng/ml

Instrument :
 ECD_S
 ClientSampleId :



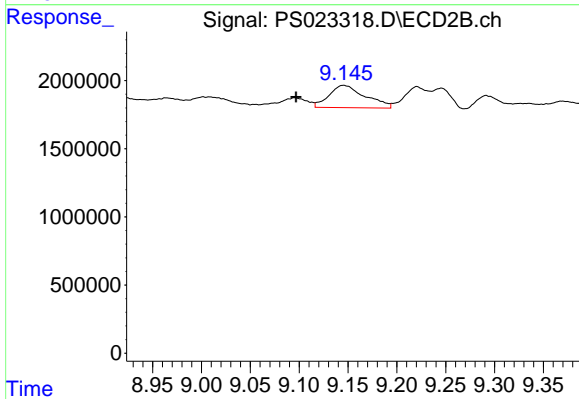
#8 DICHLORPROP

R.T.: 7.661 min
 Delta R.T.: 0.016 min
 Response: 6221713
 Conc: 10.06 ng/ml



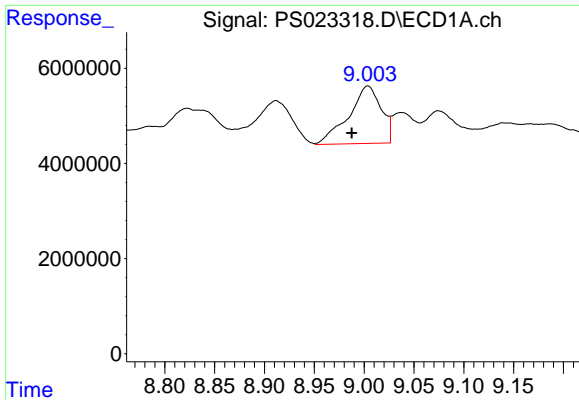
#12 2,4,5-T

R.T.: 8.486 min
 Delta R.T.: 0.014 min
 Response: 46244390
 Conc: 4.07 ng/ml



#12 2,4,5-T

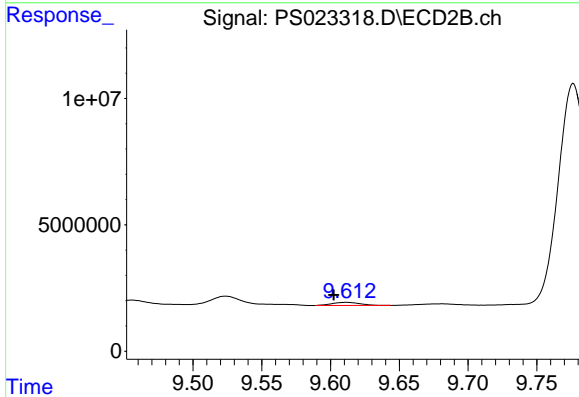
R.T.: 9.145 min
 Delta R.T.: 0.049 min
 Response: 4232335
 Conc: 1.38 ng/ml



#13 2,4-DB

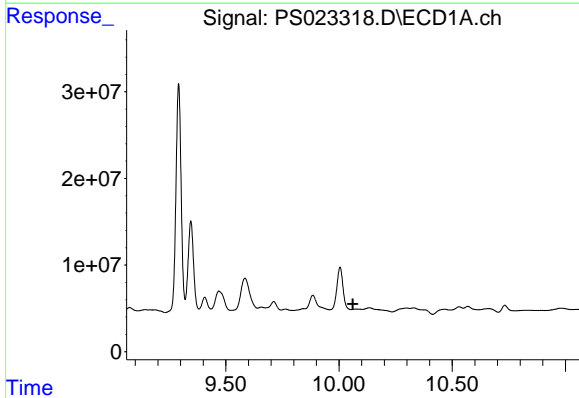
R.T.: 9.004 min
 Delta R.T.: 0.016 min
 Response: 27457010
 Conc: 11.66 ng/ml

Instrument :
 ECD_S
 ClientSampleId :



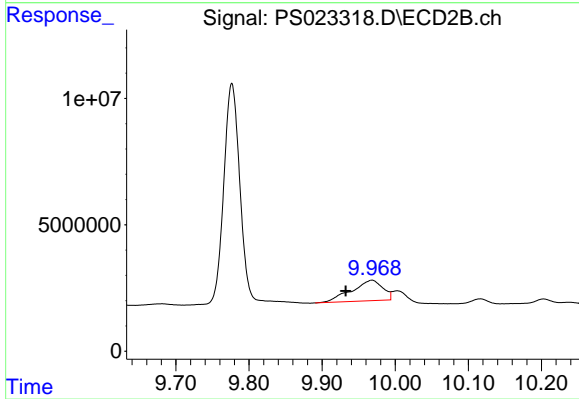
#13 2,4-DB

R.T.: 9.612 min
 Delta R.T.: 0.009 min
 Response: 1756437
 Conc: 4.74 ng/ml



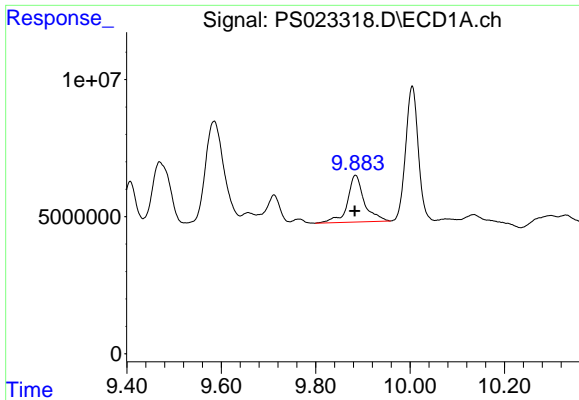
#14 DINOSEB

R.T.: 10.076 min
 Delta R.T.: 0.015 min
 Response: -11348595
 Conc: N.D.



#14 DINOSEB

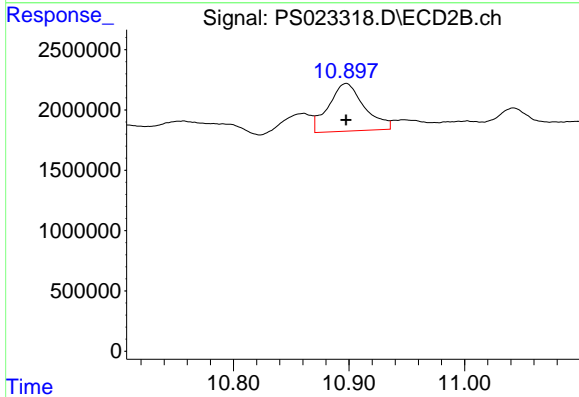
R.T.: 9.968 min
 Delta R.T.: 0.036 min
 Response: 23946240
 Conc: 10.09 ng/ml



#15 Picloram

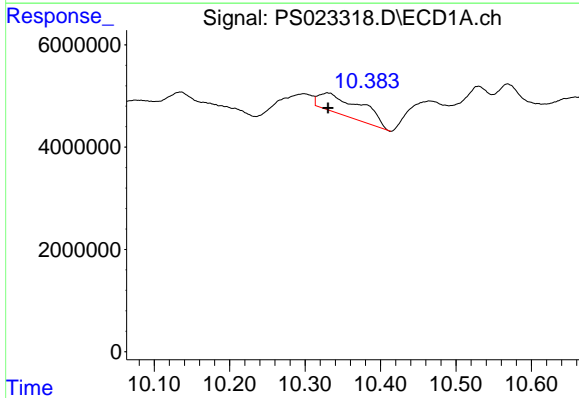
R.T.: 9.884 min
 Delta R.T.: 0.002 min
 Response: 42270307
 Conc: 2.44 ng/ml

Instrument :
 ECD_S
 ClientSampleId :



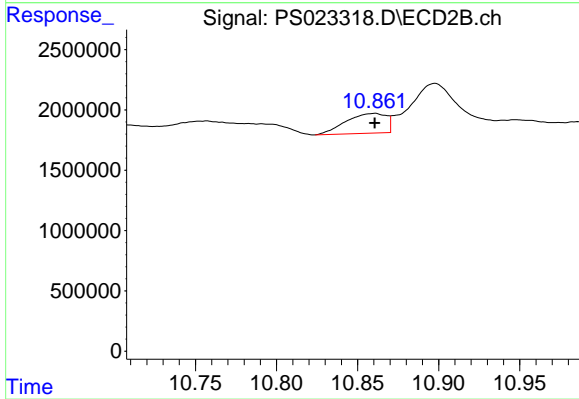
#15 Picloram

R.T.: 10.898 min
 Delta R.T.: 0.000 min
 Response: 8509812
 Conc: 1.86 ng/ml



#16 DCPA

R.T.: 10.330 min
 Delta R.T.: 0.000 min
 Response: 15260818
 Conc: 1.09 ng/ml



#16 DCPA

R.T.: 10.860 min
 Delta R.T.: 0.000 min
 Response: 2852418
 Conc: N.D.