

Data Path : Z:\pestpcbsrv\HPCHEM1\ECD_S\Data\PS061923\
 Data File : PS023319.D
 Signal(s) : Signal #1: ECD1A.ch Signal #2: ECD2B.ch
 Acq On : 19 Jun 2023 12:54
 Operator : AR\AJ
 Sample : 03229-02MS
 Misc :
 ALS Vial : 8 Sample Multiplier: 1

Instrument :
 ECD_S
 ClientSampleId :

Integration File signal 1: autoint1.e
 Integration File signal 2: autoint2.e
 Quant Time: Jun 20 01:31:53 2023
 Quant Method : Z:\pestpcbsrv\HPCHEM1\ECD_S\Method\PS060623.M
 Quant Title : 8080.M
 QLast Update : Tue Jun 06 13:00:04 2023
 Response via : Initial Calibration
 Integrator: ChemStation

Volume Inj. : 2 µl
 Signal #1 Phase : Rtx-CLPesticides Signal #2 Phase: Rtx-CLPesticides2
 Signal #1 Info : 30M x 0.32mm x0.5 Signal #2 Info : 30M x 0.32mm x 0.25µm

	Compound	RT#1	RT#2	Resp#1	Resp#2	ng/ml	ng/ml

System Monitoring Compounds							
4) S	2,4-DCAA	6.482	6.857	744.6E6	168.9E6	420.836	297.486 #
Target Compounds							
1) T	Dalapon	2.549	2.579	621.1E6	302.4E6	339.695	329.857
2) T	3,5-DICHL...	5.834	6.023	1097.5E6	351.1E6	408.503	396.664
3) T	4-Nitroph...	6.315	0.000	27186199	0	21.094	N.D. #
5) T	DICAMBA	6.629	7.024	3052.8E6	984.9E6	391.696	384.339
6) T	MCP P	6.786	7.118	245.7E6	86659061	44.575	48.476
7) T	MCPA	6.914	7.327	317.3E6	125.9E6	40.530	46.857
8) T	DICHLORPROP	7.239	7.646	830.7E6	255.7E6	402.555	413.397
9) T	2,4-D	7.440	7.934	1065.8E6	320.3E6	436.208	461.839
10) T	Pentachlo...	7.674	8.364	9494.2E6	2841.0E6	336.920	314.037
11) T	2,4,5-TP ...	8.210	8.723	4993.3E6	1957.5E6	431.826	586.561 #
12) T	2,4,5-T	8.471	9.097	5004.3E6	1289.2E6	440.510	420.558
13) T	2,4-DB	8.988	9.603	702.8E6	153.4E6	298.550	413.669 #
14) T	DINOSEB	10.060	9.933	1982.0E6	588.9E6	239.310	248.147
15) T	Picloram	9.881	10.897	6360.8E6	1511.9E6	366.518	331.282
16) T	DCPA	10.329	10.861	6132.6E6	1717.8E6	439.910	428.191

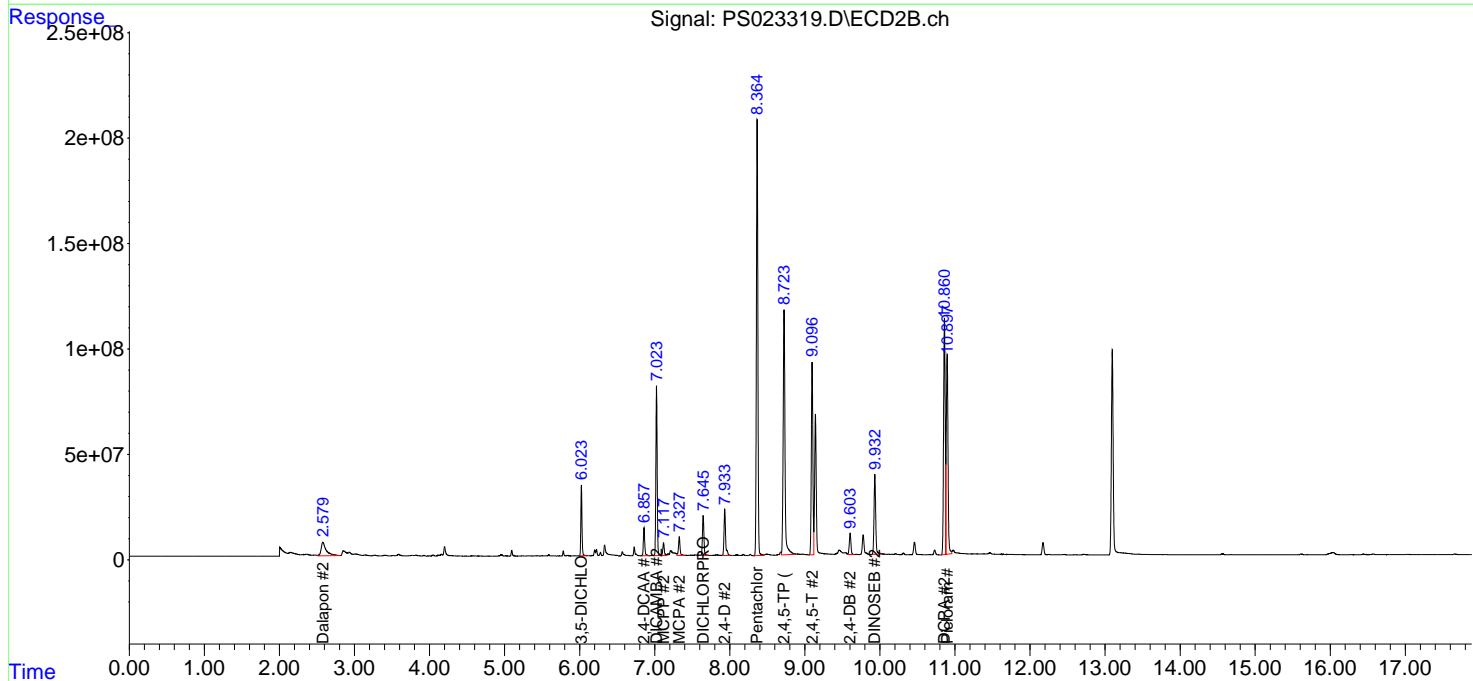
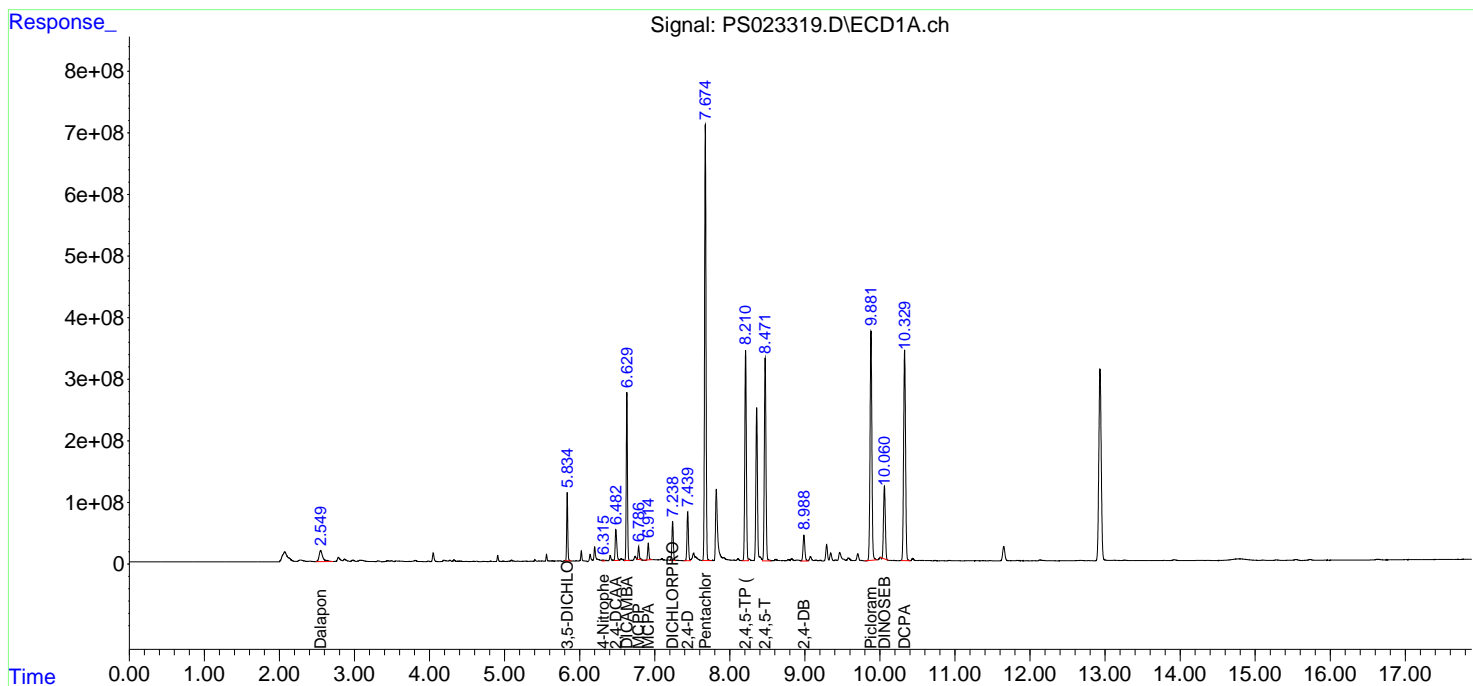
(f)=RT Delta > 1/2 Window (#)=Amounts differ by > 25% (m)=manual int.

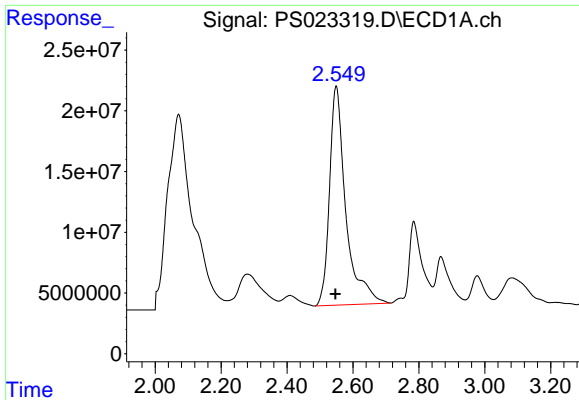
Data Path : Z:\pestpcbsrv\HPCHEM1\ECD_S\Data\PS061923\
 Data File : PS023319.D
 Signal(s) : Signal #1: ECD1A.ch Signal #2: ECD2B.ch
 Acq On : 19 Jun 2023 12:54
 Operator : AR\AJ
 Sample : 03229-02MS
 Misc :
 ALS Vial : 8 Sample Multiplier: 1

Instrument :
 ECD_S
 ClientSampleId :

Integration File signal 1: autoint1.e
 Integration File signal 2: autoint2.e
 Quant Time: Jun 20 01:31:53 2023
 Quant Method : Z:\pestpcbsrv\HPCHEM1\ECD_S\Method\PS060623.M
 Quant Title : 8080.M
 QLast Update : Tue Jun 06 13:00:04 2023
 Response via : Initial Calibration
 Integrator: ChemStation

Volume Inj. : 2 µl
 Signal #1 Phase : Rtx-CLPesticides Signal #2 Phase: Rtx-CLPesticides2
 Signal #1 Info : 30M x 0.32mm x0.5 Signal #2 Info : 30M x 0.32mm x 0.25µm

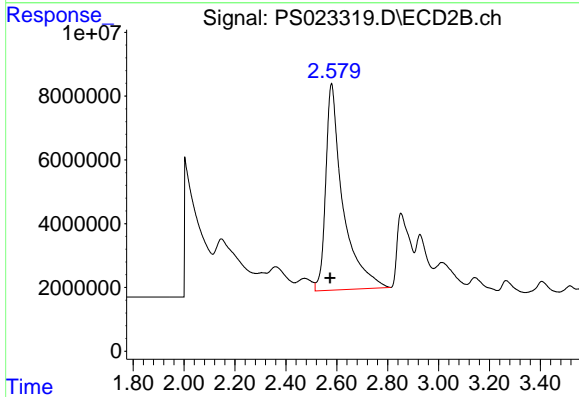




#1 Dalapon

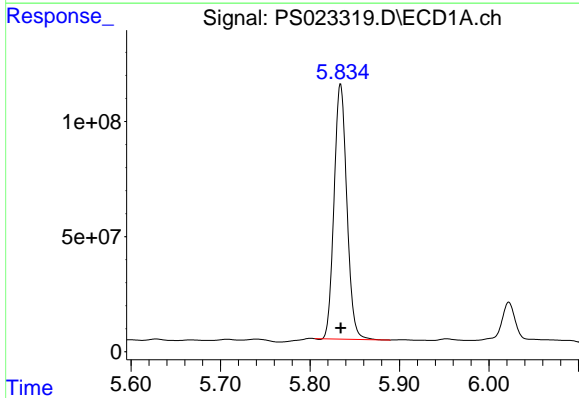
R.T.: 2.549 min
 Delta R.T.: 0.002 min
 Response: 621142995
 Conc: 339.70 ng/ml

Instrument :
 ECD_S
 ClientSampleId :



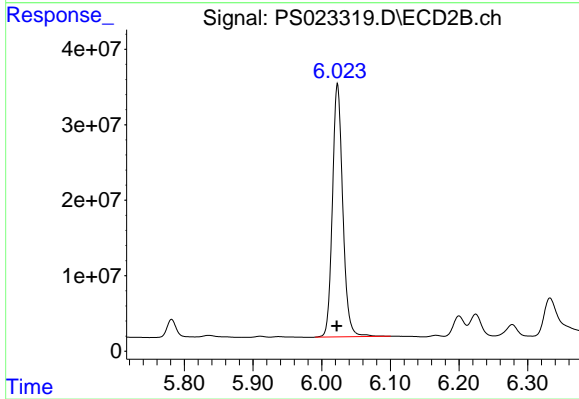
#1 Dalapon

R.T.: 2.579 min
 Delta R.T.: 0.006 min
 Response: 302363402
 Conc: 329.86 ng/ml



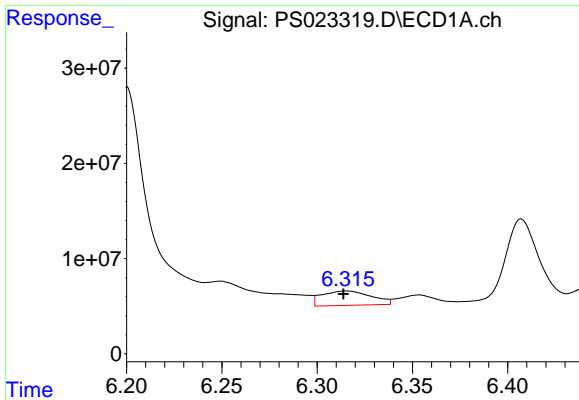
#2 3,5-DICHLOROBENZOIC ACID

R.T.: 5.834 min
 Delta R.T.: 0.000 min
 Response: 1097481545
 Conc: 408.50 ng/ml



#2 3,5-DICHLOROBENZOIC ACID

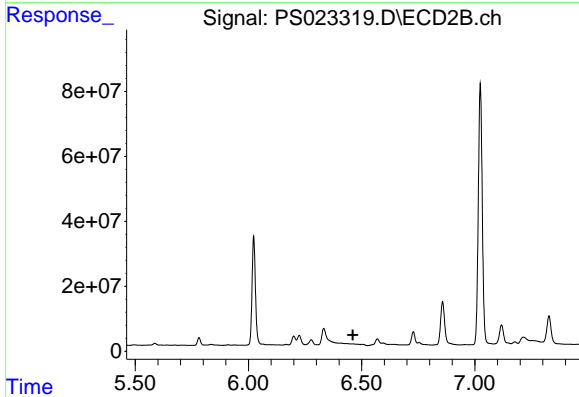
R.T.: 6.023 min
 Delta R.T.: 0.001 min
 Response: 351120907
 Conc: 396.66 ng/ml



#3 4-Nitrophenol

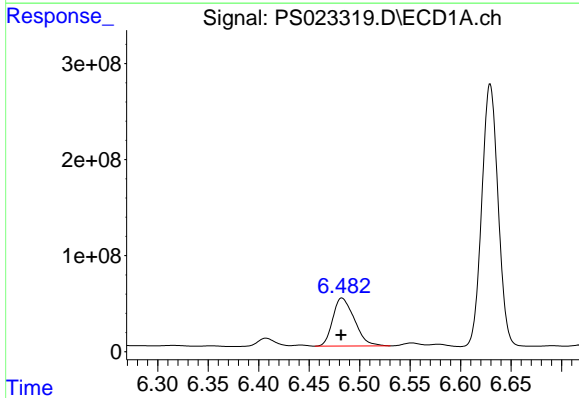
R.T.: 6.315 min
 Delta R.T.: 0.002 min
 Response: 27186199
 Conc: 21.09 ng/ml

Instrument :
 ECD_S
 ClientSampleId :



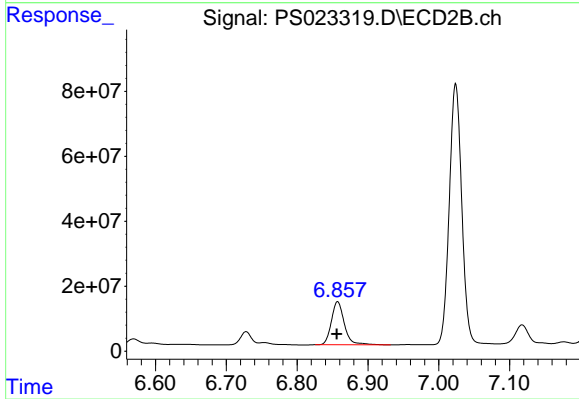
#3 4-Nitrophenol

R.T.: 0.000 min
 Exp R.T. : 6.461 min
 Response: 0
 Conc: N.D.



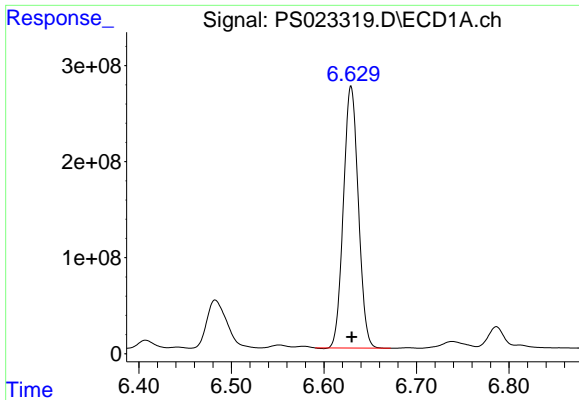
#4 2,4-DCAA

R.T.: 6.482 min
 Delta R.T.: 0.000 min
 Response: 744566529
 Conc: 420.84 ng/ml



#4 2,4-DCAA

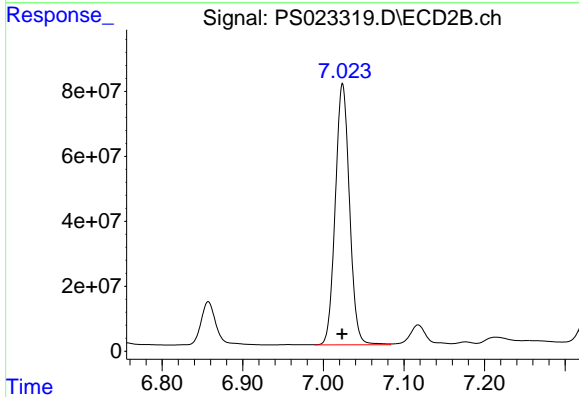
R.T.: 6.857 min
 Delta R.T.: 0.001 min
 Response: 168881470
 Conc: 297.49 ng/ml



#5 DICAMBA

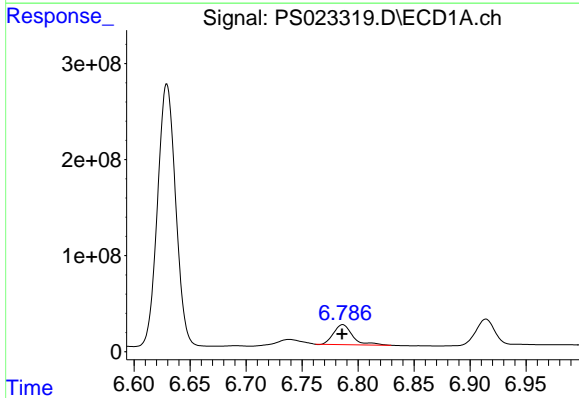
R.T.: 6.629 min
 Delta R.T.: 0.000 min
 Response: 3052774879
 Conc: 391.70 ng/ml

Instrument :
 ECD_S
 ClientSampleId :



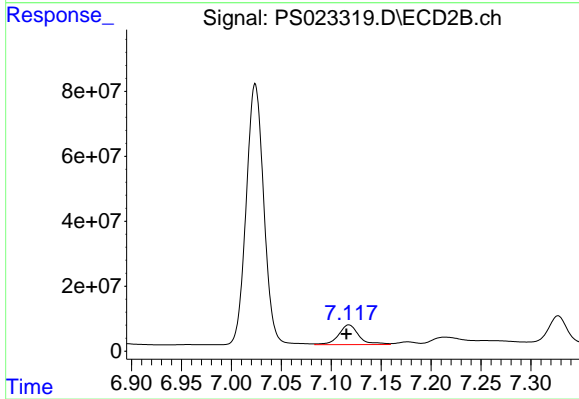
#5 DICAMBA

R.T.: 7.024 min
 Delta R.T.: 0.000 min
 Response: 984946192
 Conc: 384.34 ng/ml



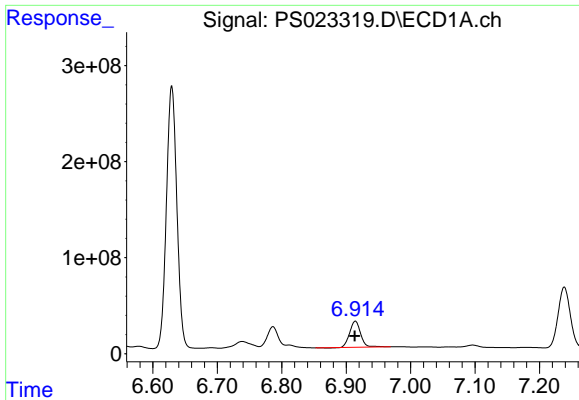
#6 MCPP

R.T.: 6.786 min
 Delta R.T.: 0.000 min
 Response: 245679343
 Conc: 44.58 ug/ml



#6 MCPP

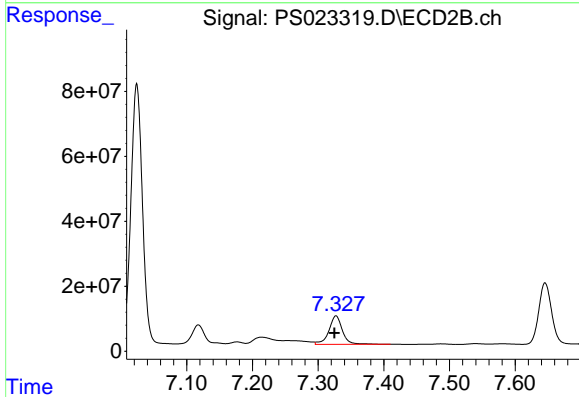
R.T.: 7.118 min
 Delta R.T.: 0.002 min
 Response: 86659061
 Conc: 48.48 ug/ml



#7 MCPA

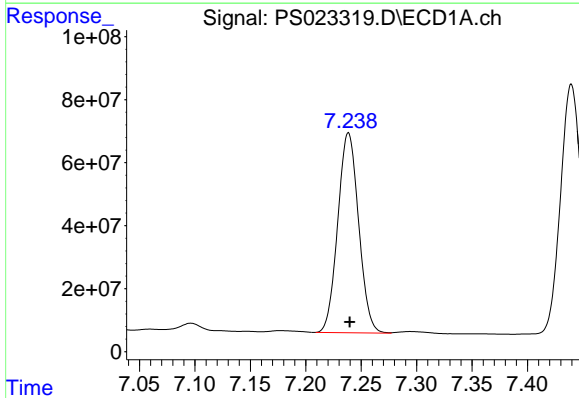
R.T.: 6.914 min
 Delta R.T.: 0.001 min
 Response: 317332428
 Conc: 40.53 ug/ml

Instrument :
 ECD_S
 ClientSampleId :



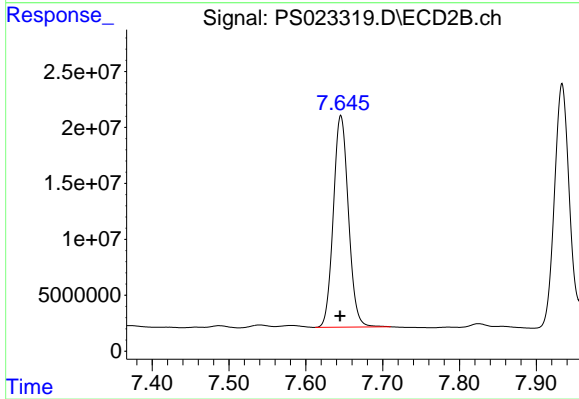
#7 MCPA

R.T.: 7.327 min
 Delta R.T.: 0.002 min
 Response: 125933104
 Conc: 46.86 ug/ml



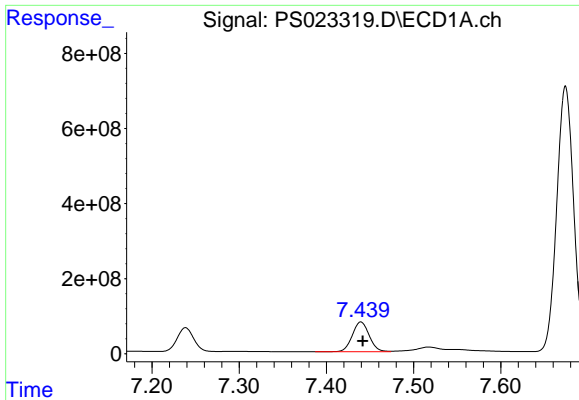
#8 DICHLORPROP

R.T.: 7.239 min
 Delta R.T.: -0.001 min
 Response: 830682510
 Conc: 402.56 ng/ml



#8 DICHLORPROP

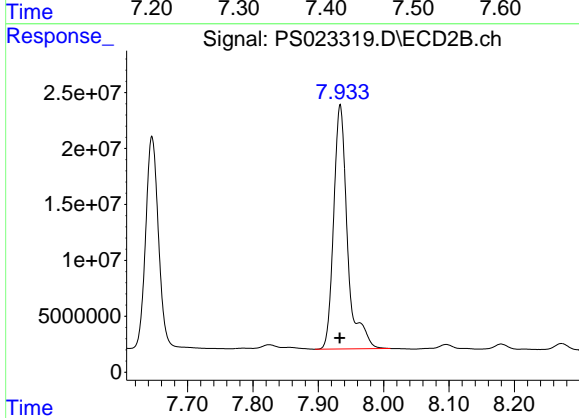
R.T.: 7.646 min
 Delta R.T.: 0.001 min
 Response: 255721549
 Conc: 413.40 ng/ml



#9 2,4-D

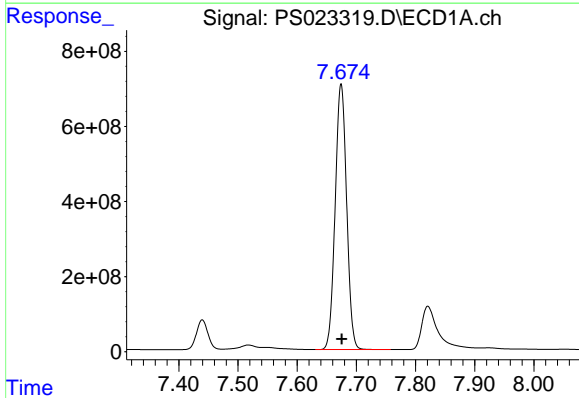
R.T.: 7.440 min
 Delta R.T.: -0.002 min
 Response: 1065783556
 Conc: 436.21 ng/ml

Instrument :
 ECD_S
 ClientSampleId :



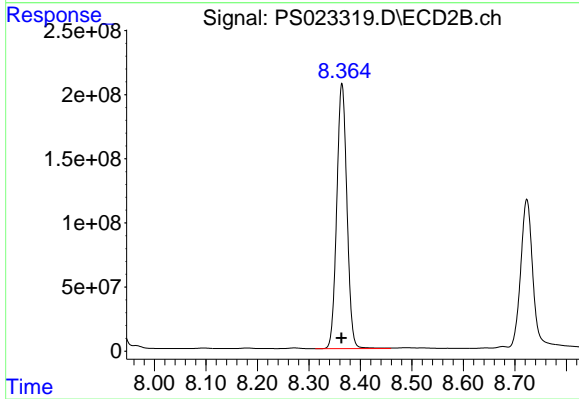
#9 2,4-D

R.T.: 7.934 min
 Delta R.T.: 0.000 min
 Response: 320293495
 Conc: 461.84 ng/ml



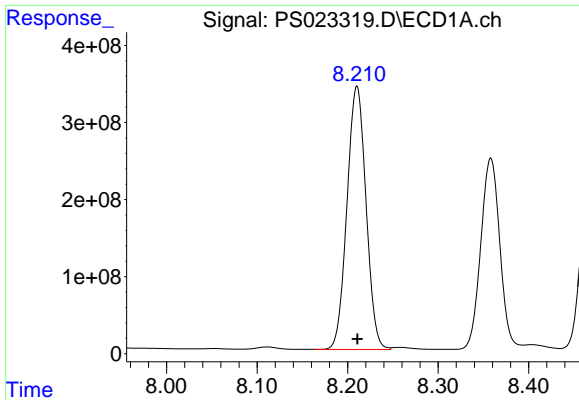
#10 Pentachlorophenol

R.T.: 7.674 min
 Delta R.T.: -0.001 min
 Response: 9494202887
 Conc: 336.92 ng/ml



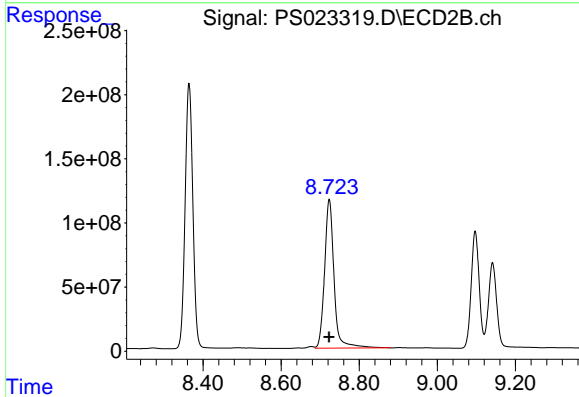
#10 Pentachlorophenol

R.T.: 8.364 min
 Delta R.T.: 0.001 min
 Response: 2841046172
 Conc: 314.04 ng/ml

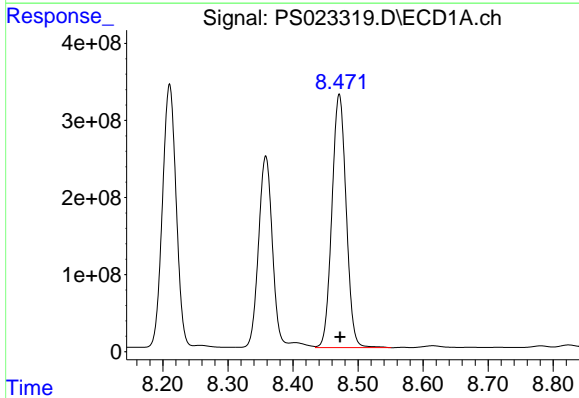


#11 2,4,5-TP (SILVEX)
 R.T.: 8.210 min
 Delta R.T.: 0.000 min
 Response: 4993281002
 Conc: 431.83 ng/ml

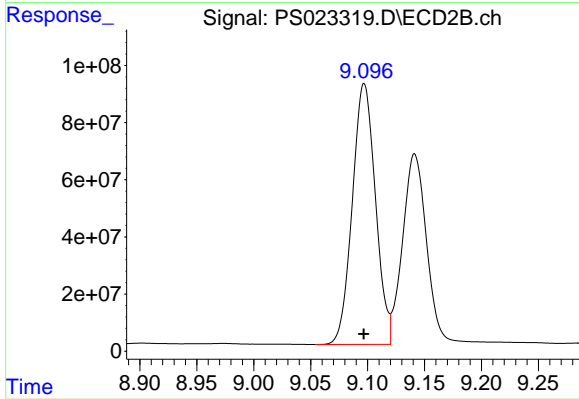
Instrument :
 ECD_S
 ClientSampleId :



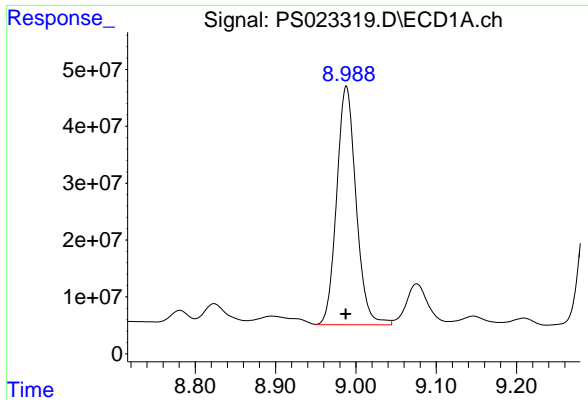
#11 2,4,5-TP (SILVEX)
 R.T.: 8.723 min
 Delta R.T.: 0.000 min
 Response: 1957544866
 Conc: 586.56 ng/ml



#12 2,4,5-T
 R.T.: 8.471 min
 Delta R.T.: -0.001 min
 Response: 5004279854
 Conc: 440.51 ng/ml



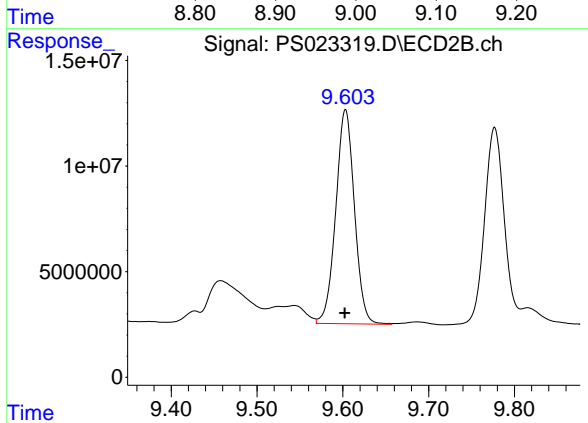
#12 2,4,5-T
 R.T.: 9.097 min
 Delta R.T.: 0.000 min
 Response: 1289246044
 Conc: 420.56 ng/ml



#13 2,4-DB

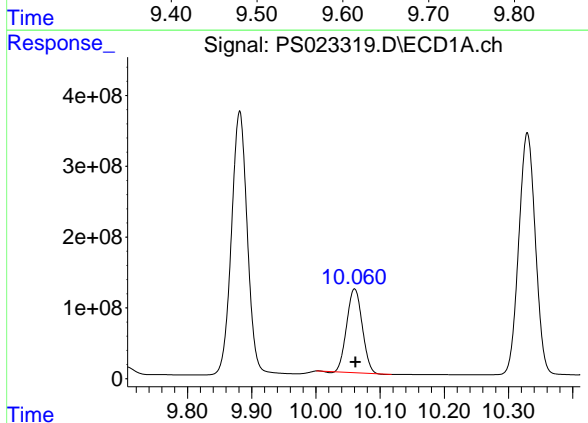
R.T.: 8.988 min
 Delta R.T.: 0.000 min
 Response: 702817250
 Conc: 298.55 ng/ml

Instrument :
 ECD_S
 ClientSampleId :



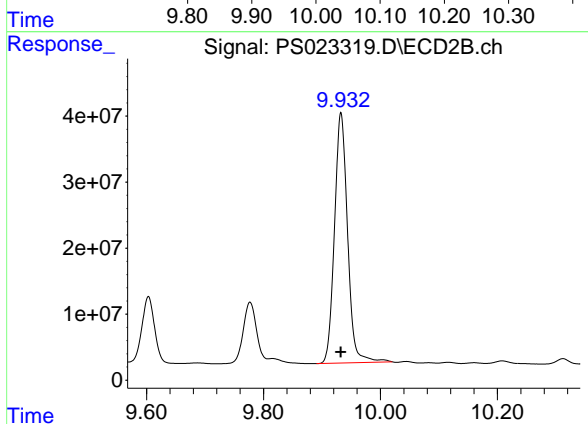
#13 2,4-DB

R.T.: 9.603 min
 Delta R.T.: 0.000 min
 Response: 153389378
 Conc: 413.67 ng/ml



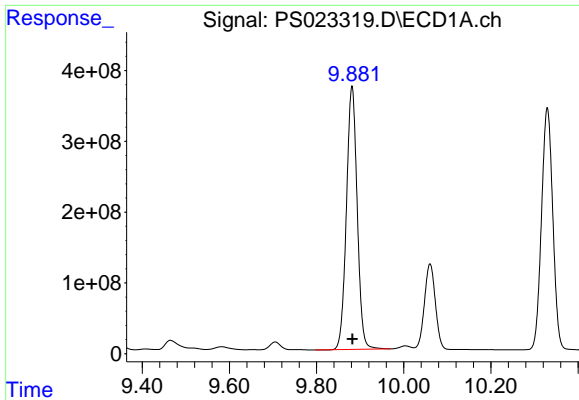
#14 DINOSEB

R.T.: 10.060 min
 Delta R.T.: -0.001 min
 Response: 1982015799
 Conc: 239.31 ng/ml



#14 DINOSEB

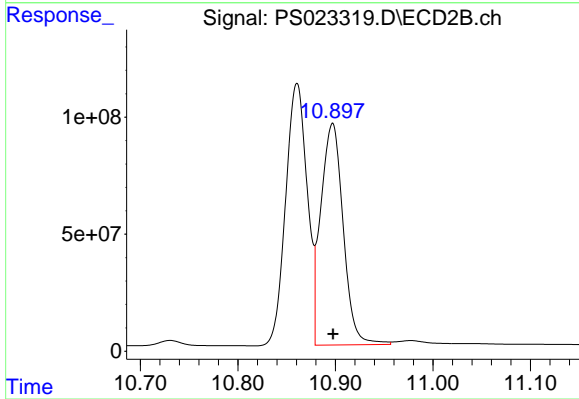
R.T.: 9.933 min
 Delta R.T.: 0.000 min
 Response: 588866702
 Conc: 248.15 ng/ml



#15 Picloram

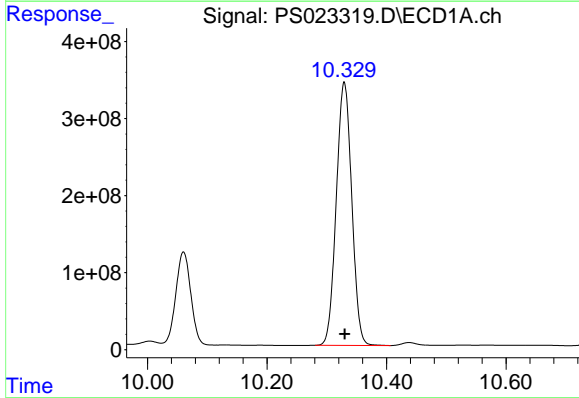
R.T.: 9.881 min
 Delta R.T.: -0.001 min
 Response: 6360761128
 Conc: 366.52 ng/ml

Instrument :
 ECD_S
 ClientSampleId :



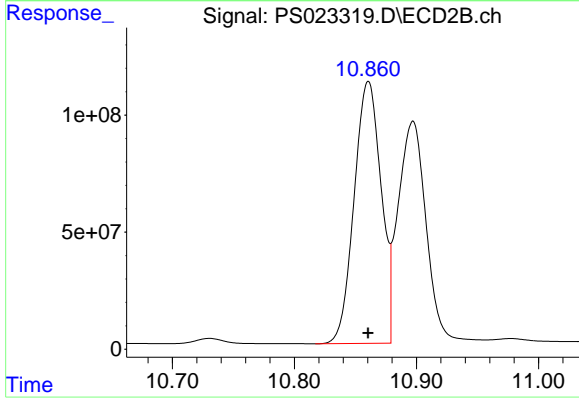
#15 Picloram

R.T.: 10.897 min
 Delta R.T.: 0.000 min
 Response: 1511911350
 Conc: 331.28 ng/ml



#16 DCPA

R.T.: 10.329 min
 Delta R.T.: -0.001 min
 Response: 6132578241
 Conc: 439.91 ng/ml



#16 DCPA

R.T.: 10.861 min
 Delta R.T.: 0.000 min
 Response: 1717841063
 Conc: 428.19 ng/ml