

Data Path : Z:\pestpcbsrv\HPCHEM1\ECD_S\Data\PS061923\
 Data File : PS023331.D
 Signal(s) : Signal #1: ECD1A.ch Signal #2: ECD2B.ch
 Acq On : 19 Jun 2023 18:09
 Operator : AR\AJ
 Sample : 03222-13
 Misc :
 ALS Vial : 18 Sample Multiplier: 1

Instrument :
 ECD_S
 ClientSampleId :

Integration File signal 1: autoint1.e
 Integration File signal 2: autoint2.e
 Quant Time: Jun 20 01:36:05 2023
 Quant Method : Z:\pestpcbsrv\HPCHEM1\ECD_S\Method\PS060623.M
 Quant Title : 8080.M
 QLast Update : Tue Jun 06 13:00:04 2023
 Response via : Initial Calibration
 Integrator: ChemStation

Volume Inj. : 2 µl
 Signal #1 Phase : Rtx-CLPesticides Signal #2 Phase: Rtx-CLPesticides2
 Signal #1 Info : 30M x 0.32mm x0.5 Signal #2 Info : 30M x 0.32mm x 0.25µm

Compound	RT#1	RT#2	Resp#1	Resp#2	ng/ml	ng/ml
System Monitoring Compounds						
4) S 2,4-DCAA	6.478	6.856	612.6E6	140.6E6	346.225	247.594 #
Target Compounds						
1) T Dalapon	2.517	0.000	44347433	0	24.253	N.D. #
2) T 3,5-DICHL...	5.830	6.038	688959	-44042	<MDL	N.D. #
3) T 4-Nitroph...	6.336	6.488	7499083	9356484	5.819	27.426 #
5) T DICAMBA	6.629	7.064f	-5794382	9801845	N.D.	3.825
6) T MCPP	6.809	7.107	33182026	21962865	6.020	12.286 #
7) T MCPA	6.948	7.325	10243793	34176479	1.308	12.716 #
8) T DICHLORPROP	7.214	7.658	45714600	16556356	22.154	26.765
9) T 2,4-D	7.444	7.923	29266050	3672313	11.978	5.295 #
10) T Pentachlo...	7.673	8.362	46238399	11037407	1.641	1.220 #
11) T 2,4,5-TP ...	8.200	8.751	21789840	13214085	1.884	3.959 #
12) T 2,4,5-T	8.484	9.078	41972263	18757790	3.695	6.119 #
13) T 2,4-DB	8.989	9.608	139.7E6	19497559	59.338	52.582
14) T DINOSEB	10.125f	9.921	27815344	38993955	3.358	16.432 #
15) T Picloram	9.879	10.910	49922804	23062072	2.877	5.053 #
16) T DCPA	10.325	10.858	17622366	6927718	1.264	1.727 #

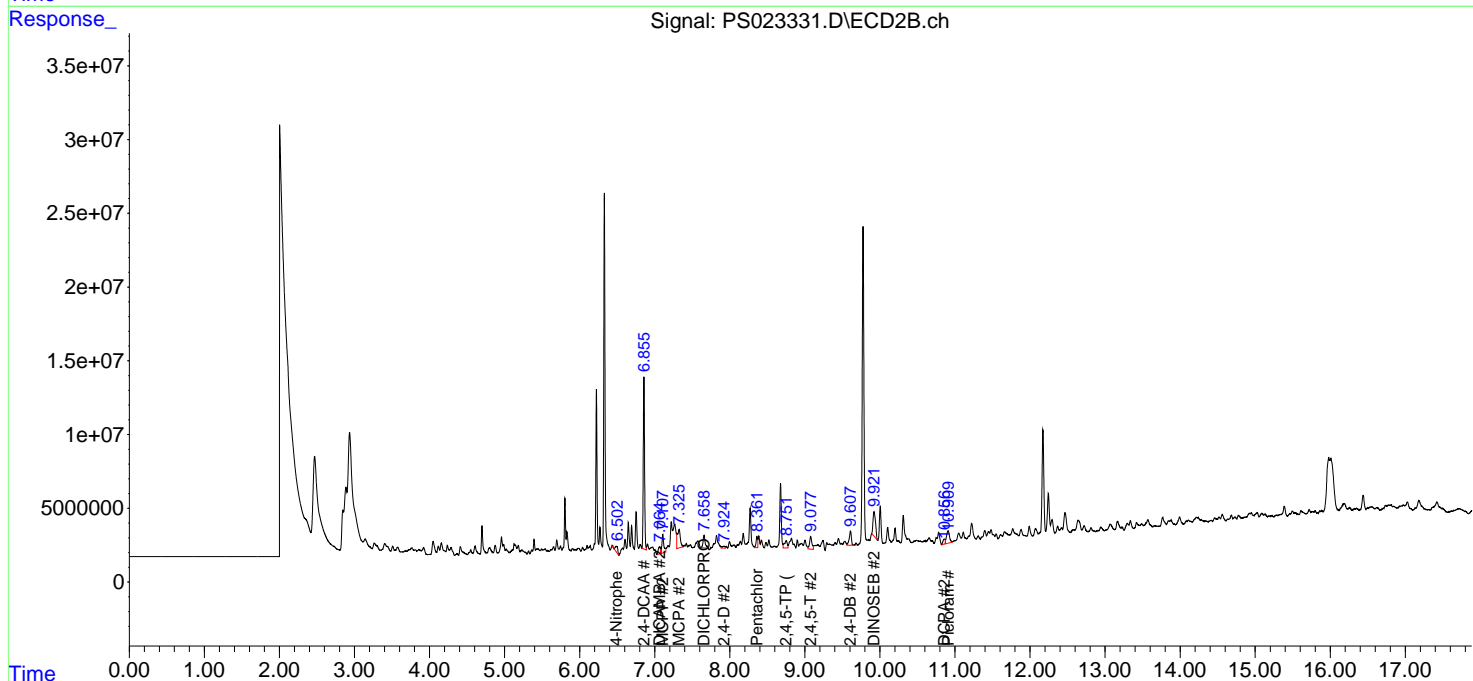
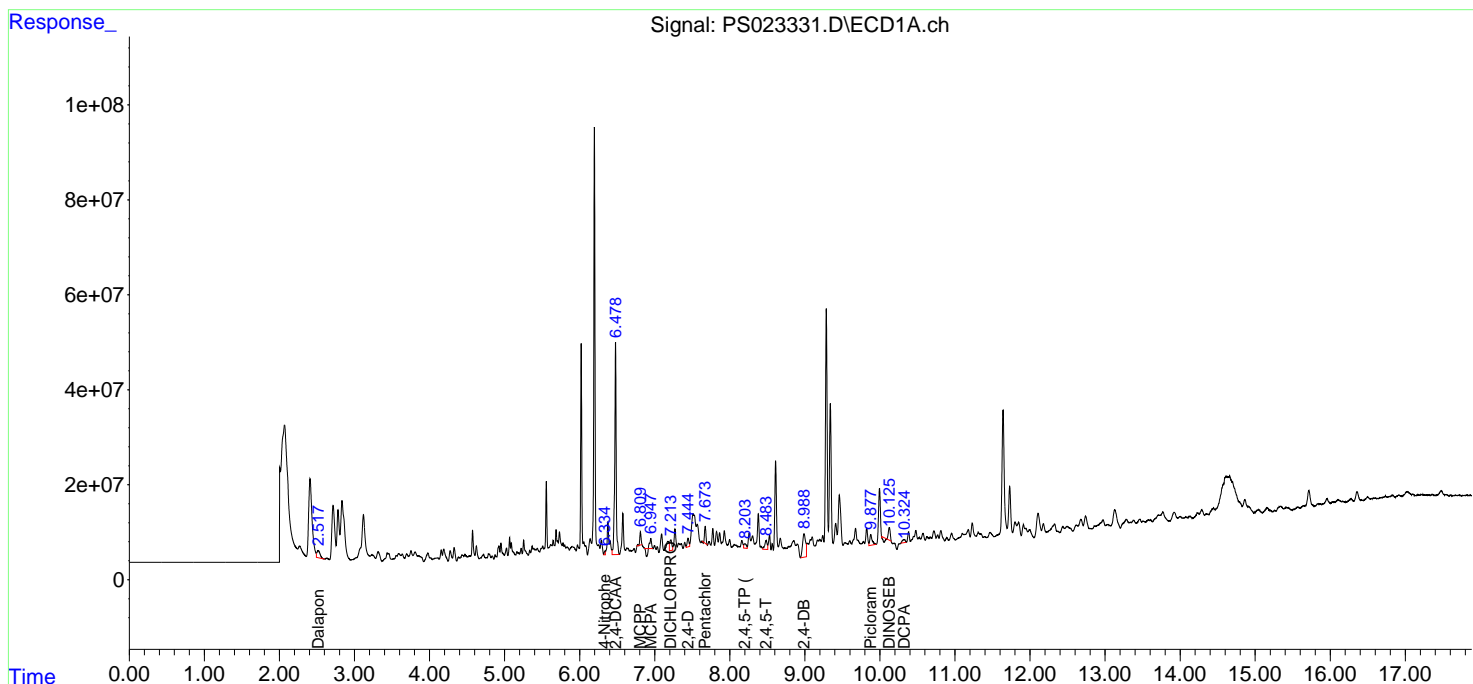
(f)=RT Delta > 1/2 Window (#)=Amounts differ by > 25% (m)=manual int.

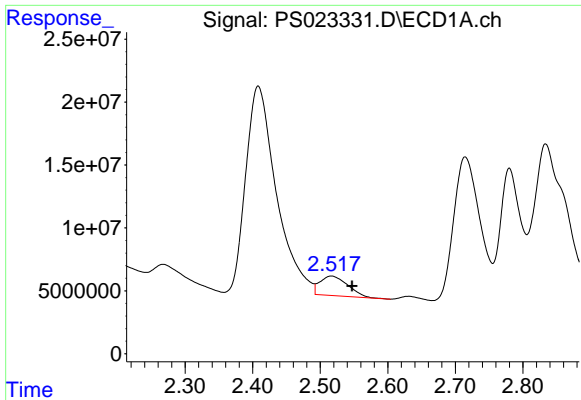
Data Path : Z:\pestpcbsrv\HPCHEM1\ECD_S\Data\PS061923\
 Data File : PS023331.D
 Signal(s) : Signal #1: ECD1A.ch Signal #2: ECD2B.ch
 Acq On : 19 Jun 2023 18:09
 Operator : AR\AJ
 Sample : 03222-13
 Misc :
 ALS Vial : 18 Sample Multiplier: 1

Instrument :
 ECD_S
 ClientSampleId :

Integration File signal 1: autoint1.e
 Integration File signal 2: autoint2.e
 Quant Time: Jun 20 01:36:05 2023
 Quant Method : Z:\pestpcbsrv\HPCHEM1\ECD_S\Method\PS060623.M
 Quant Title : 8080.M
 QLast Update : Tue Jun 06 13:00:04 2023
 Response via : Initial Calibration
 Integrator: ChemStation

Volume Inj. : 2 µl
 Signal #1 Phase : Rtx-CLPesticides Signal #2 Phase: Rtx-CLPesticides2
 Signal #1 Info : 30M x 0.32mm x0.5 Signal #2 Info : 30M x 0.32mm x 0.25µm

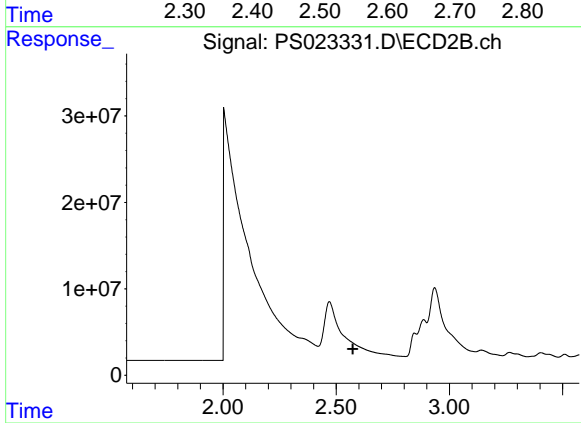




#1 Dalapon

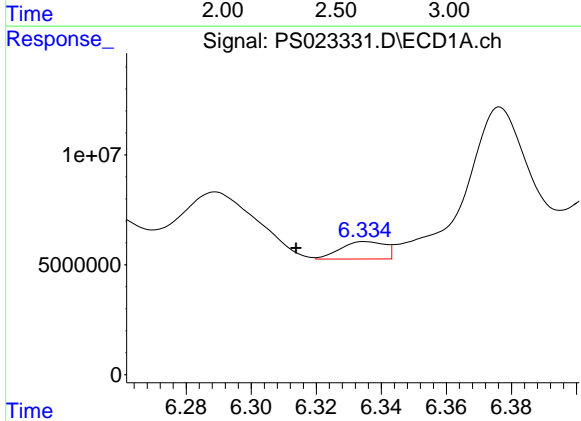
R.T.: 2.517 min
 Delta R.T.: -0.030 min
 Response: 44347433
 Conc: 24.25 ng/ml

Instrument :
 ECD_S
 ClientSampleId :



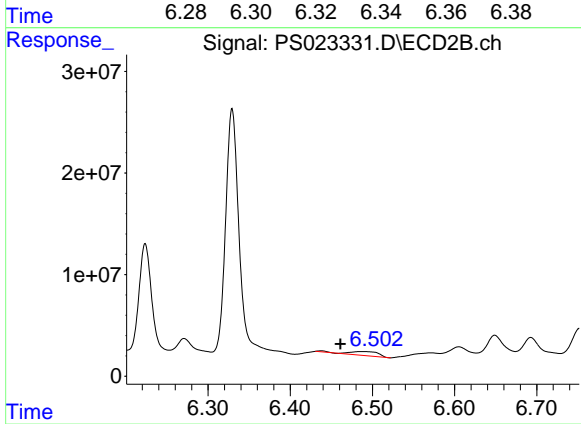
#1 Dalapon

R.T.: 0.000 min
 Exp R.T. : 2.574 min
 Response: 0
 Conc: N.D.



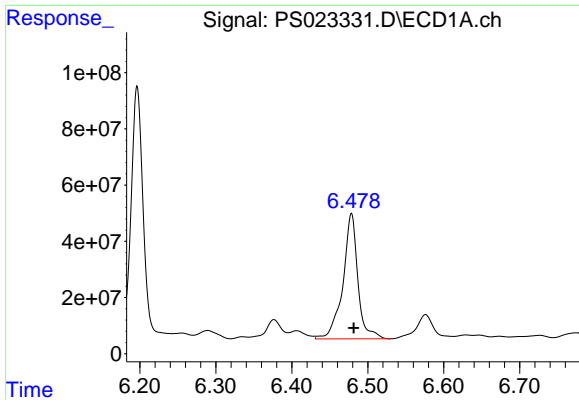
#3 4-Nitrophenol

R.T.: 6.336 min
 Delta R.T.: 0.022 min
 Response: 7499083
 Conc: 5.82 ng/ml



#3 4-Nitrophenol

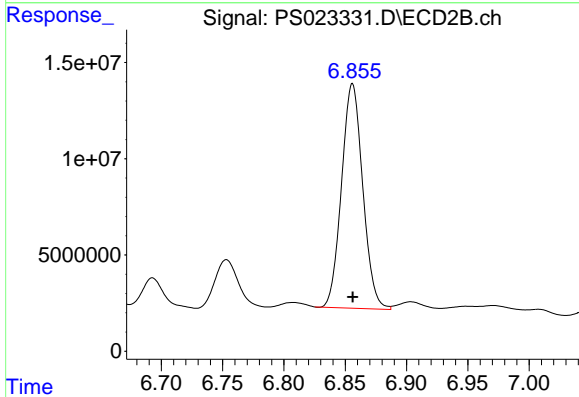
R.T.: 6.488 min
 Delta R.T.: 0.027 min
 Response: 9356484
 Conc: 27.43 ng/ml



#4 2,4-DCAA

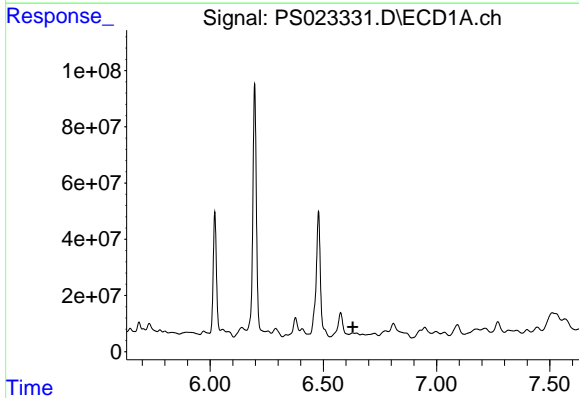
R.T.: 6.478 min
 Delta R.T.: -0.003 min
 Response: 612560804
 Conc: 346.23 ng/ml

Instrument :
 ECD_S
 ClientSampleId :



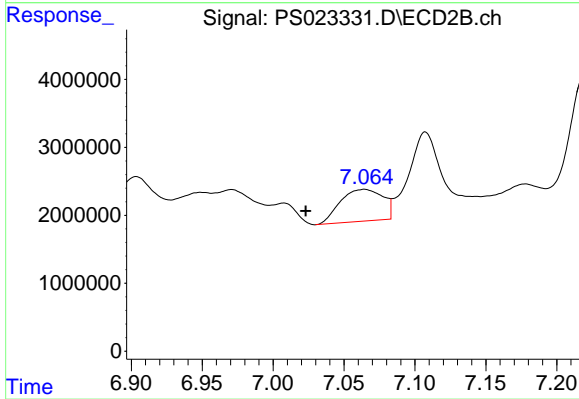
#4 2,4-DCAA

R.T.: 6.856 min
 Delta R.T.: 0.000 min
 Response: 140557911
 Conc: 247.59 ng/ml



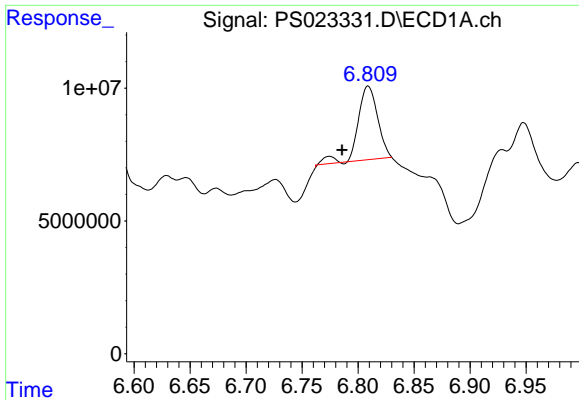
#5 DICAMBA

R.T.: 6.629 min
 Delta R.T.: 0.000 min
 Response: -5794382
 Conc: N.D.



#5 DICAMBA

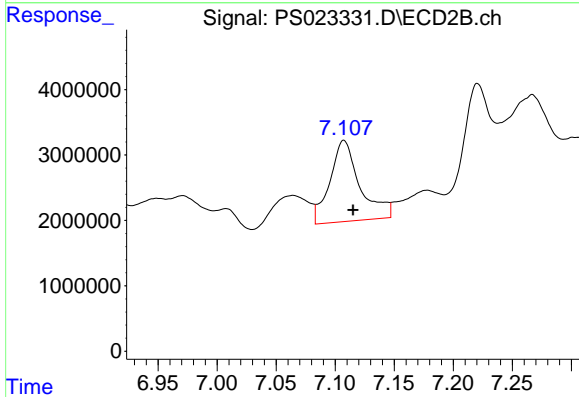
R.T.: 7.064 min
 Delta R.T.: 0.041 min
 Response: 9801845
 Conc: 3.82 ng/ml



#6 MCPP

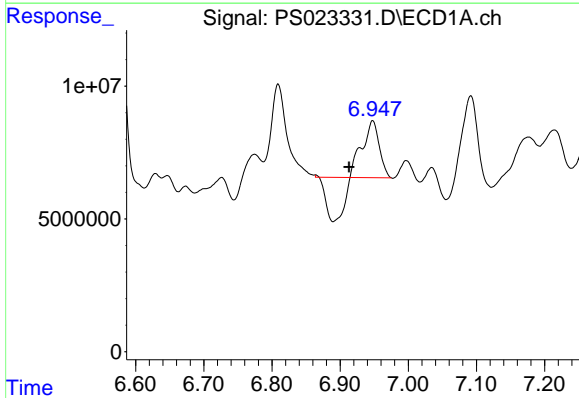
R.T.: 6.809 min
 Delta R.T.: 0.024 min
 Response: 33182026
 Conc: 6.02 ug/ml

Instrument :
 ECD_S
 ClientSampleId :



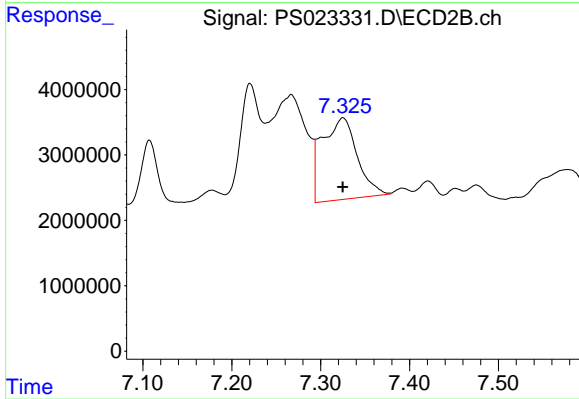
#6 MCPP

R.T.: 7.107 min
 Delta R.T.: -0.008 min
 Response: 21962865
 Conc: 12.29 ug/ml



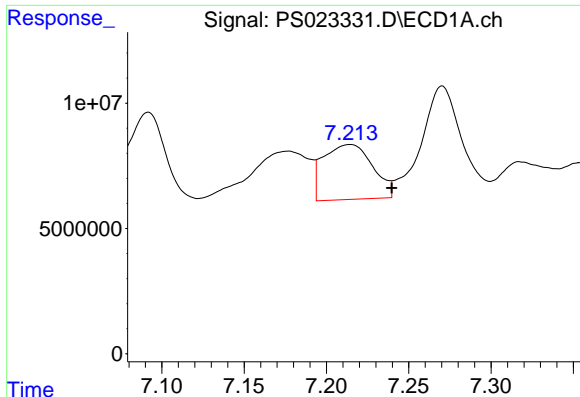
#7 MCPA

R.T.: 6.948 min
 Delta R.T.: 0.035 min
 Response: 10243793
 Conc: 1.31 ug/ml



#7 MCPA

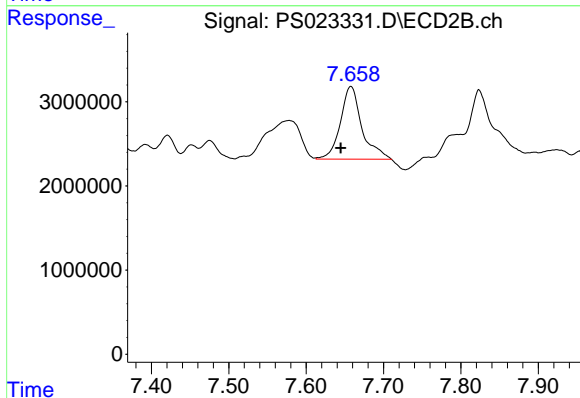
R.T.: 7.325 min
 Delta R.T.: 0.000 min
 Response: 34176479
 Conc: 12.72 ug/ml



#8 DICHLORPROP

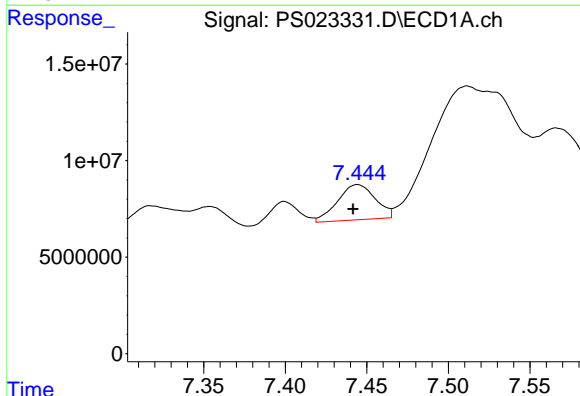
R.T.: 7.214 min
 Delta R.T.: -0.026 min
 Response: 45714600
 Conc: 22.15 ng/ml

Instrument :
 ECD_S
 ClientSampleId :



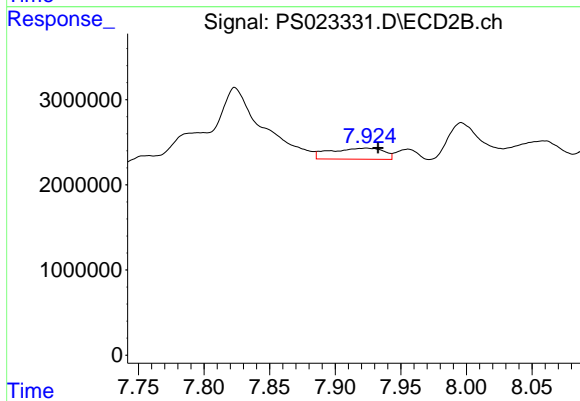
#8 DICHLORPROP

R.T.: 7.658 min
 Delta R.T.: 0.013 min
 Response: 16556356
 Conc: 26.76 ng/ml



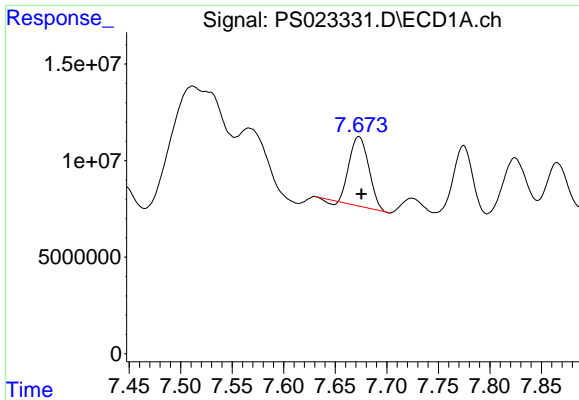
#9 2,4-D

R.T.: 7.444 min
 Delta R.T.: 0.003 min
 Response: 29266050
 Conc: 11.98 ng/ml



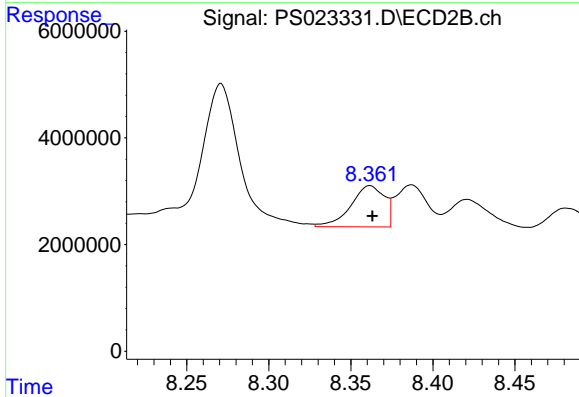
#9 2,4-D

R.T.: 7.923 min
 Delta R.T.: -0.009 min
 Response: 3672313
 Conc: 5.30 ng/ml

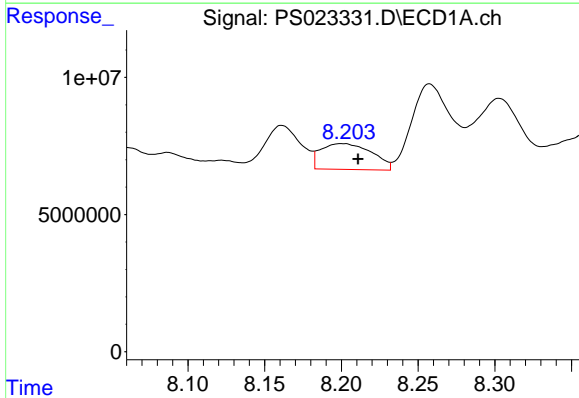


#10 Pentachlorophenol
 R.T.: 7.673 min
 Delta R.T.: -0.003 min
 Response: 46238399
 Conc: 1.64 ng/ml

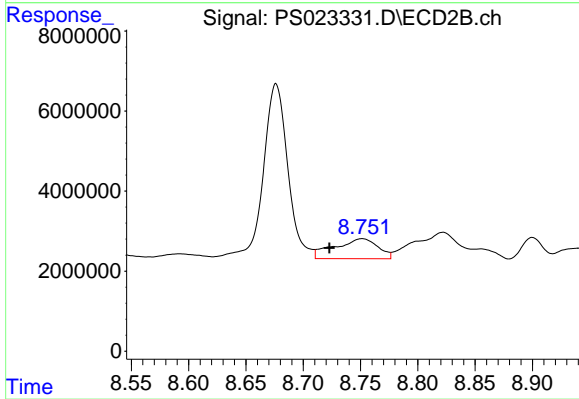
Instrument :
 ECD_S
 ClientSampleId :



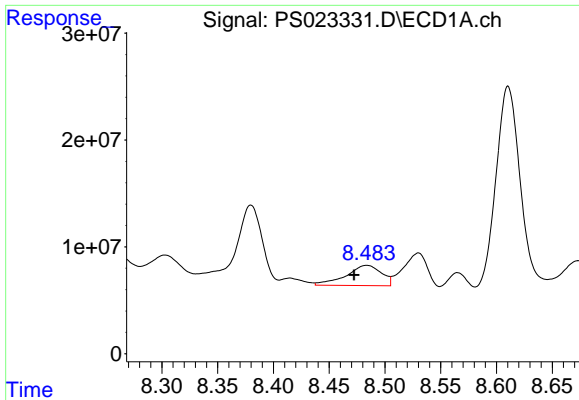
#10 Pentachlorophenol
 R.T.: 8.362 min
 Delta R.T.: -0.001 min
 Response: 11037407
 Conc: 1.22 ng/ml



#11 2,4,5-TP (SILVEX)
 R.T.: 8.200 min
 Delta R.T.: -0.011 min
 Response: 21789840
 Conc: 1.88 ng/ml



#11 2,4,5-TP (SILVEX)
 R.T.: 8.751 min
 Delta R.T.: 0.029 min
 Response: 13214085
 Conc: 3.96 ng/ml

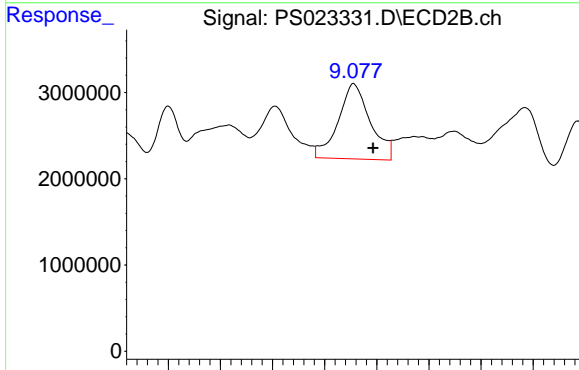


#12 2,4,5-T

R.T.: 8.484 min
 Delta R.T.: 0.011 min
 Response: 41972263
 Conc: 3.69 ng/ml

Instrument :
 ECD_S
 ClientSampleId :

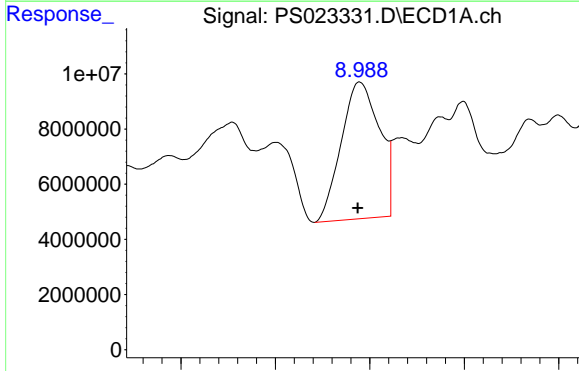
Time



#12 2,4,5-T

R.T.: 9.078 min
 Delta R.T.: -0.019 min
 Response: 18757790
 Conc: 6.12 ng/ml

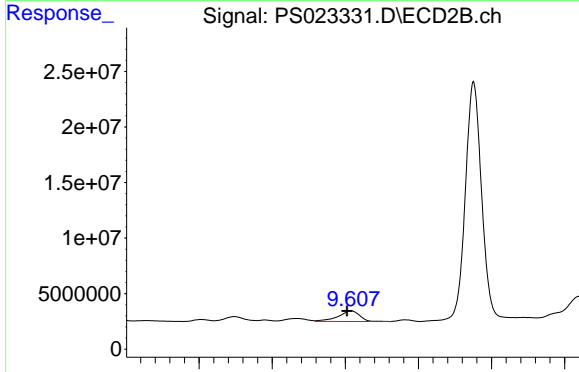
Time



#13 2,4-DB

R.T.: 8.989 min
 Delta R.T.: 0.002 min
 Response: 139687143
 Conc: 59.34 ng/ml

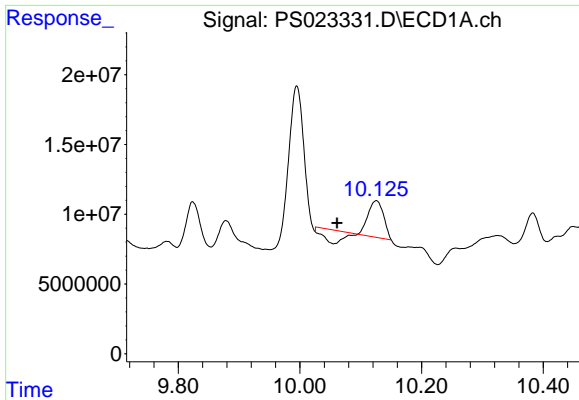
Time



#13 2,4-DB

R.T.: 9.608 min
 Delta R.T.: 0.005 min
 Response: 19497559
 Conc: 52.58 ng/ml

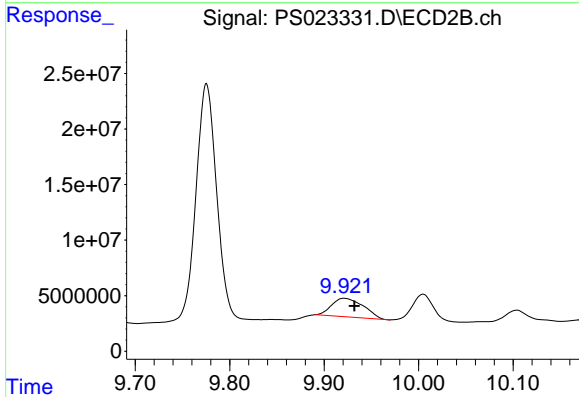
Time



#14 DINOSEB

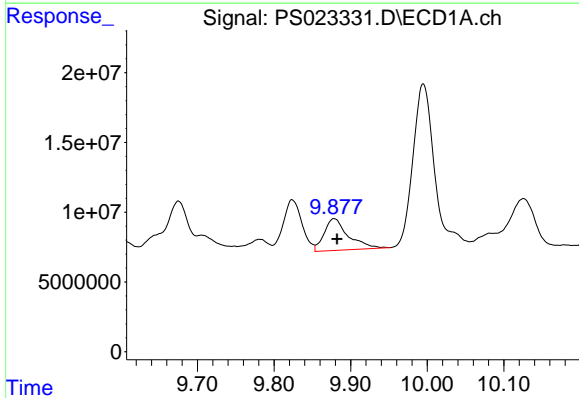
R.T.: 10.125 min
 Delta R.T.: 0.064 min
 Response: 27815344
 Conc: 3.36 ng/ml

Instrument :
 ECD_S
 ClientSampleId :



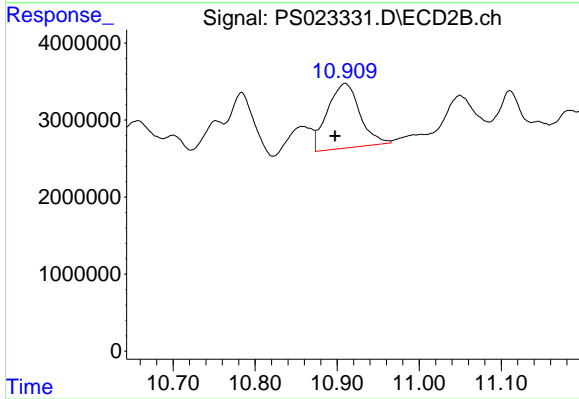
#14 DINOSEB

R.T.: 9.921 min
 Delta R.T.: -0.011 min
 Response: 38993955
 Conc: 16.43 ng/ml



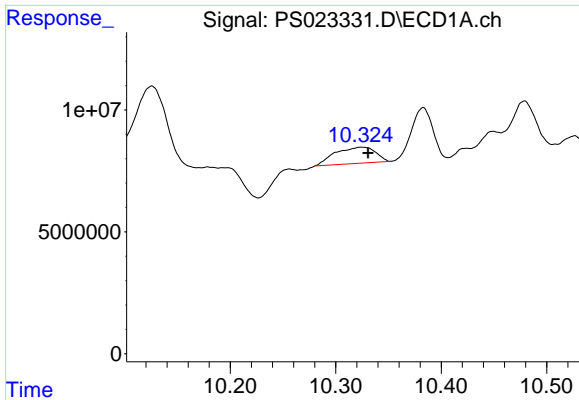
#15 Picloram

R.T.: 9.879 min
 Delta R.T.: -0.004 min
 Response: 49922804
 Conc: 2.88 ng/ml



#15 Picloram

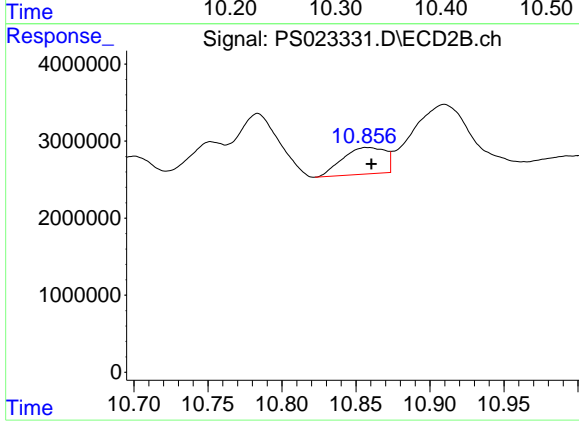
R.T.: 10.910 min
 Delta R.T.: 0.012 min
 Response: 23062072
 Conc: 5.05 ng/ml



#16 DCPA

R.T.: 10.325 min
Delta R.T.: -0.005 min
Response: 17622366
Conc: 1.26 ng/ml

Instrument :
ECD_S
ClientSampleId :



#16 DCPA

R.T.: 10.858 min
Delta R.T.: -0.003 min
Response: 6927718
Conc: 1.73 ng/ml