

Data Path : Z:\pestpcbsrv\HPCHEM1\ECD_S\Data\PS062018\
 Data File : PS000516.D
 Signal(s) : Signal #1: ECD1A.ch Signal #2: ECD2B.ch
 Acq On : 21 Jun 2018 06:20
 Operator : UA
 Sample : HSTDCCC750
 Misc :
 ALS Vial : 3 Sample Multiplier: 1

Instrument :
 ECD_S
 ClientSampleId :

Integration File signal 1: autoint1.e
 Integration File signal 2: autoint2.e
 Quant Time: Jun 21 07:54:42 2018
 Quant Method : \\TERASTORAGE\Terastorage\pestpcbsrv\HPCHEM1\ECD_S\Method\PS061718.M
 Quant Title : 8080.M
 QLast Update : Mon Jun 18 00:27:44 2018
 Response via : Initial Calibration
 Integrator: ChemStation

Volume Inj. : 2 µl
 Signal #1 Phase : Rtx-CLPesticides Signal #2 Phase: Rtx-CLPesticides2
 Signal #1 Info : 30M x 0.32mm x0.5 Signal #2 Info : 30M x 0.32mm x 0.25µm

	Compound	RT#1	RT#2	Resp#1	Resp#2	ng/ml	ng/ml

System Monitoring Compounds							
4) S	2,4-DCAA	11.820	11.181	283.8E6	260.8E6	753.521	766.442
Target Compounds							
1) T	Dalapon	3.176	2.536	340.1E6	290.3E6	664.987	666.030
2) T	3,5-DICHL...	10.235	9.326	385.9E6	332.5E6	715.077	722.686
3) T	4-Nitroph...	11.418	10.328	170.2E6	143.8E6	724.026	733.959
5) T	DICAMBA	12.139	11.471	1026.5E6	913.9E6	726.210	737.616
6) T	MCP P	12.478	11.696	82915050	69906991	73.220	72.861
7) T	MCPA	12.730	12.074	126.7E6	104.8E6	72.070	75.693
8) T	DICHLORPROP	13.331	12.593	268.3E6	233.3E6	713.322	724.606
9) T	2,4-D	13.690	13.066	348.2E6	315.7E6	727.937	742.851
10) T	Pentachlo...	14.088	13.629	3820.4E6	3530.3E6	727.705	746.266
11) T	2,4,5-TP ...	14.953	14.238	1585.1E6	1449.8E6	730.175	745.008
12) T	2,4,5-T	15.351	14.812	1565.1E6	1163.1E6	726.826	687.783
13) T	2,4-DB	16.104	15.455	214.5E6	182.9E6	728.518	738.849
14) T	DINOSEB	17.616	15.890	1062.5E6	940.5E6	713.477	720.962
15) T	Picloram	17.372	17.134	2079.0E6	1821.7E6	711.866	730.334
16) T	DCPA	17.954	17.076	1912.9E6	1755.7E6	746.499	761.390

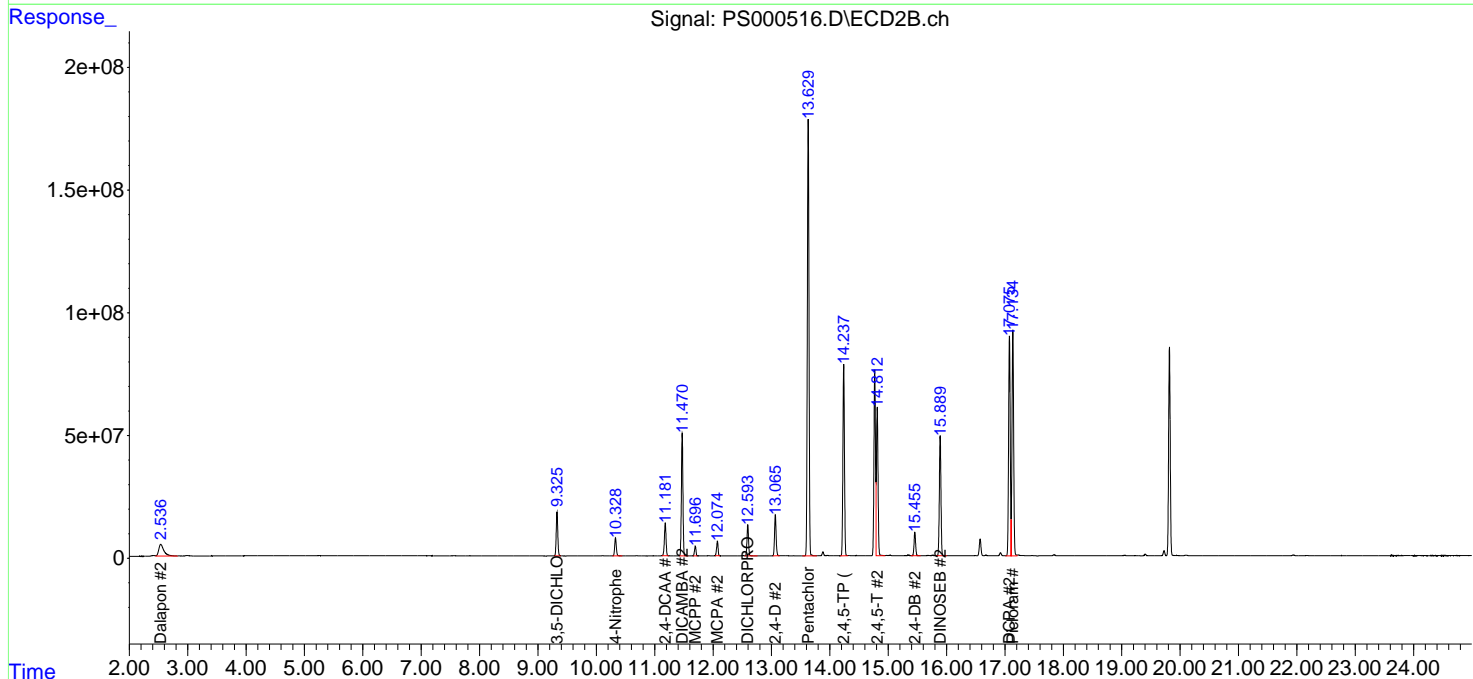
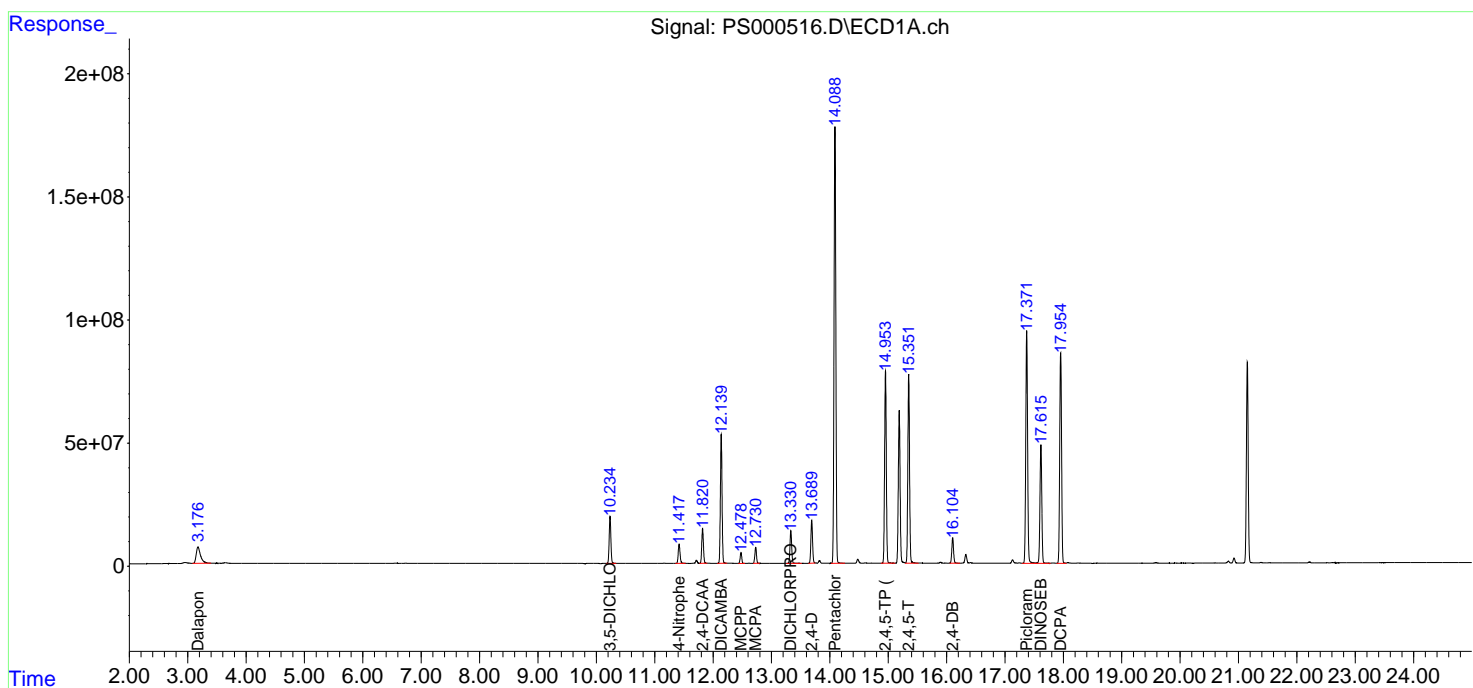
(f)=RT Delta > 1/2 Window (#)=Amounts differ by > 25% (m)=manual int.

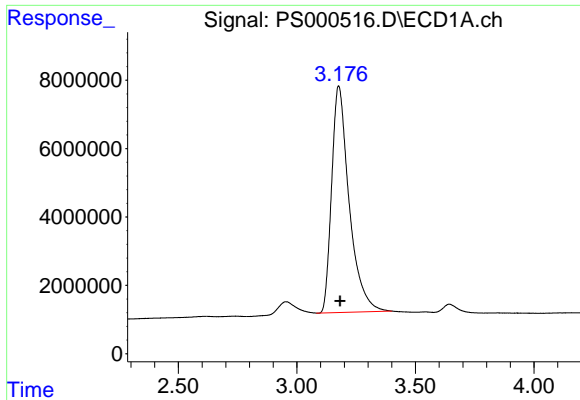
Data Path : Z:\pestpcbsrv\HPCHEM1\ECD_S\Data\PS062018\
 Data File : PS000516.D
 Signal(s) : Signal #1: ECD1A.ch Signal #2: ECD2B.ch
 Acq On : 21 Jun 2018 06:20
 Operator : UA
 Sample : HSTDCCC750
 Misc :
 ALS Vial : 3 Sample Multiplier: 1

Instrument :
 ECD_S
 ClientSampled :

Integration File signal 1: autoint1.e
 Integration File signal 2: autoint2.e
 Quant Time: Jun 21 07:54:42 2018
 Quant Method : \\TERASTORAGE\Terastorage\pestpcbsrv\HPCHEM1\ECD_S\Method\PS061718.M
 Quant Title : 8080.M
 QLast Update : Mon Jun 18 00:27:44 2018
 Response via : Initial Calibration
 Integrator: ChemStation

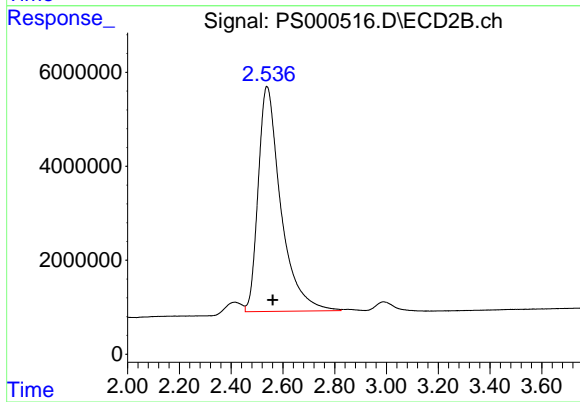
Volume Inj. : 2 µl
 Signal #1 Phase : Rtx-CLPesticides Signal #2 Phase: Rtx-CLPesticides2
 Signal #1 Info : 30M x 0.32mm x0.5 Signal #2 Info : 30M x 0.32mm x 0.25µm



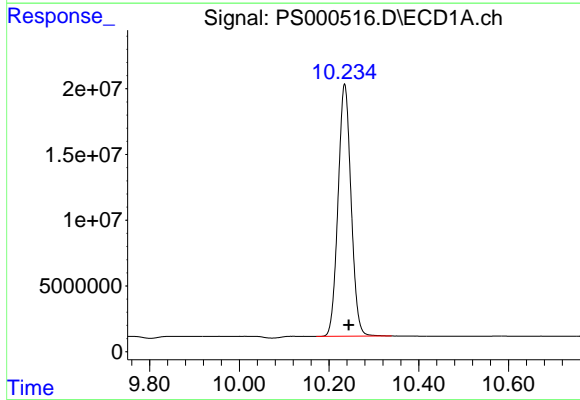


#1 Dalapon
 R.T.: 3.176 min
 Delta R.T.: -0.006 min
 Response: 340114757
 Conc: 664.99 ng/ml

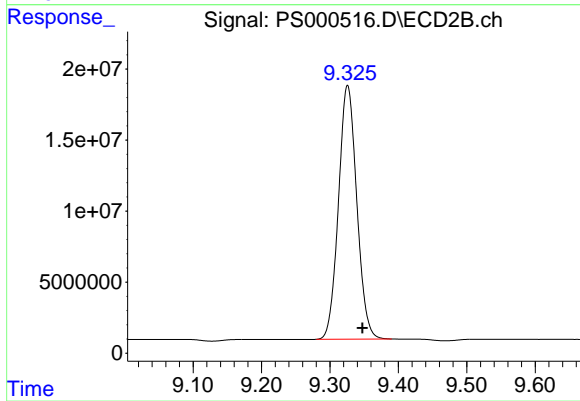
Instrument :
 ECD_S
 ClientSampleId :



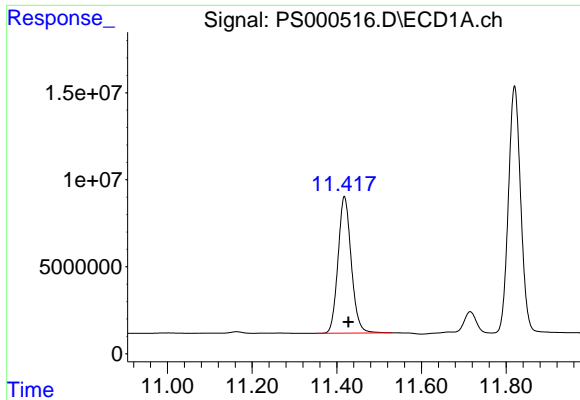
#1 Dalapon
 R.T.: 2.536 min
 Delta R.T.: -0.024 min
 Response: 290344369
 Conc: 666.03 ng/ml



#2 3,5-DICHLOROBENZOIC ACID
 R.T.: 10.235 min
 Delta R.T.: -0.009 min
 Response: 385910240
 Conc: 715.08 ng/ml

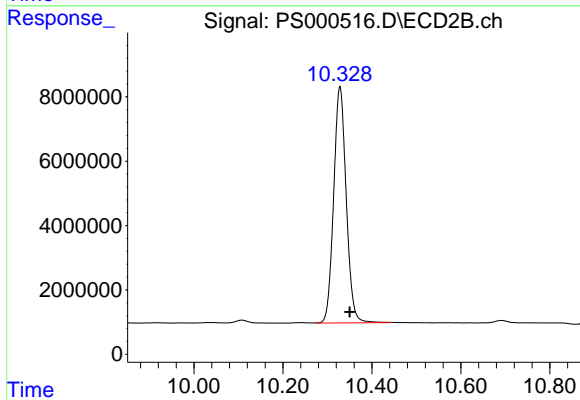


#2 3,5-DICHLOROBENZOIC ACID
 R.T.: 9.326 min
 Delta R.T.: -0.022 min
 Response: 332465407
 Conc: 722.69 ng/ml

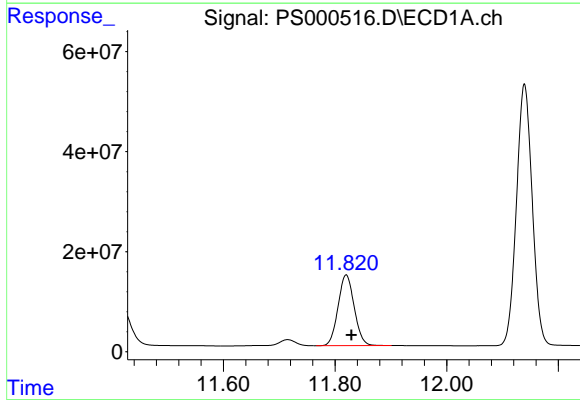


#3 4-Nitrophenol
 R.T.: 11.418 min
 Delta R.T.: -0.009 min
 Response: 170197106
 Conc: 724.03 ng/ml

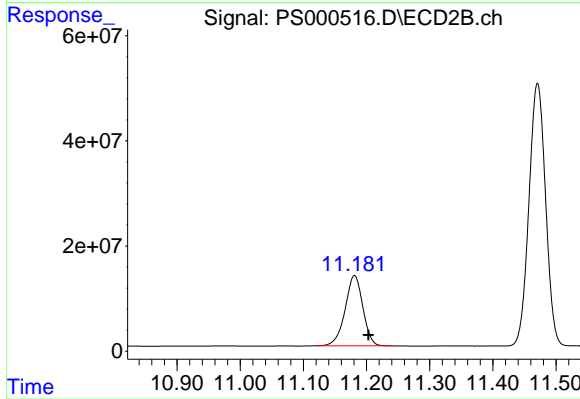
Instrument :
 ECD_S
 ClientSampled :



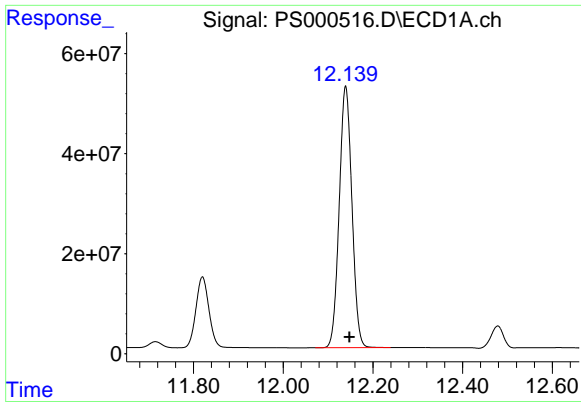
#3 4-Nitrophenol
 R.T.: 10.328 min
 Delta R.T.: -0.022 min
 Response: 143827877
 Conc: 733.96 ng/ml



#4 2,4-DCAA
 R.T.: 11.820 min
 Delta R.T.: -0.009 min
 Response: 283817351
 Conc: 753.52 ng/ml

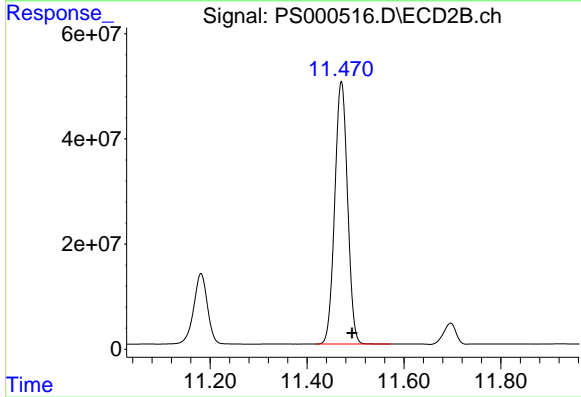


#4 2,4-DCAA
 R.T.: 11.181 min
 Delta R.T.: -0.022 min
 Response: 260827162
 Conc: 766.44 ng/ml

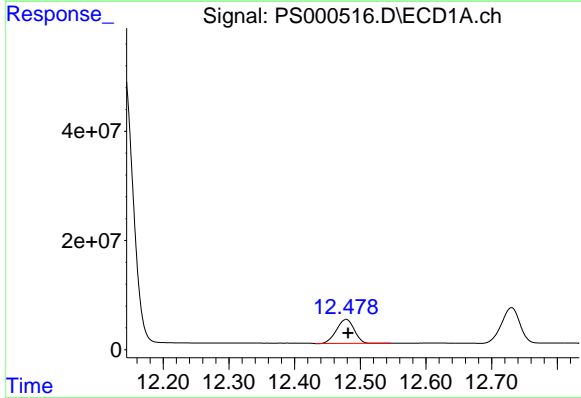


#5 DICAMBA
 R.T.: 12.139 min
 Delta R.T.: -0.008 min
 Response: 1026461970
 Conc: 726.21 ng/ml

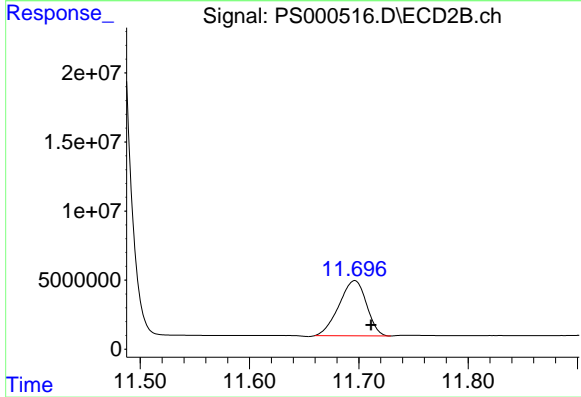
Instrument :
 ECD_S
 ClientSampleId :



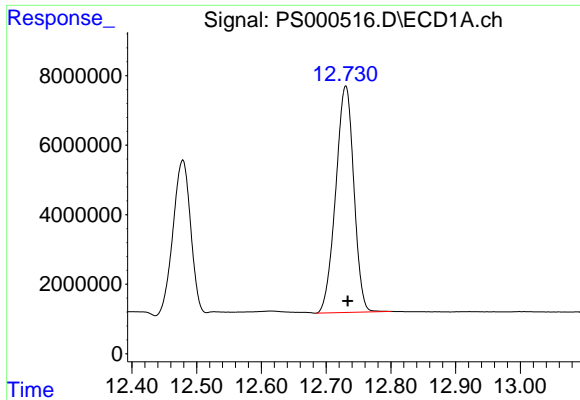
#5 DICAMBA
 R.T.: 11.471 min
 Delta R.T.: -0.022 min
 Response: 913877162
 Conc: 737.62 ng/ml



#6 MCPP
 R.T.: 12.478 min
 Delta R.T.: -0.003 min
 Response: 82915050
 Conc: 73.22 ug/ml



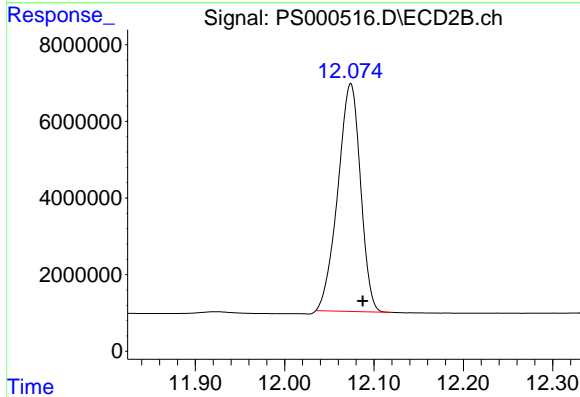
#6 MCPP
 R.T.: 11.696 min
 Delta R.T.: -0.015 min
 Response: 69906991
 Conc: 72.86 ug/ml



#7 MCPA

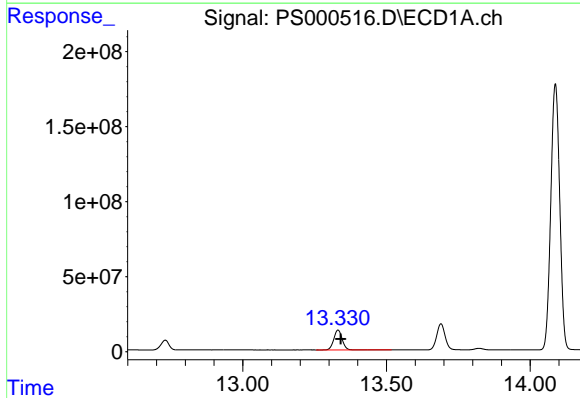
R.T.: 12.730 min
 Delta R.T.: -0.003 min
 Response: 126677732
 Conc: 72.07 ug/ml

Instrument :
 ECD_S
 ClientSampleId :



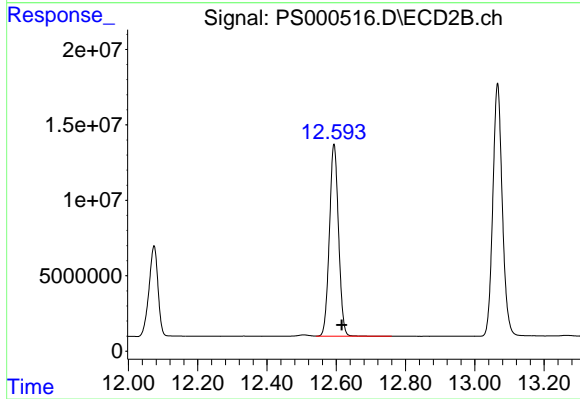
#7 MCPA

R.T.: 12.074 min
 Delta R.T.: -0.013 min
 Response: 104830853
 Conc: 75.69 ug/ml



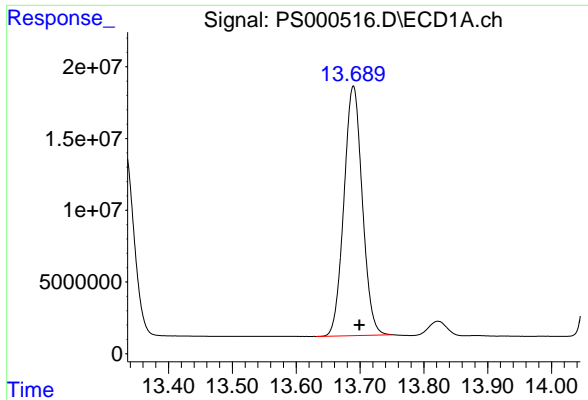
#8 DICHLORPROP

R.T.: 13.331 min
 Delta R.T.: -0.010 min
 Response: 268322393
 Conc: 713.32 ng/ml



#8 DICHLORPROP

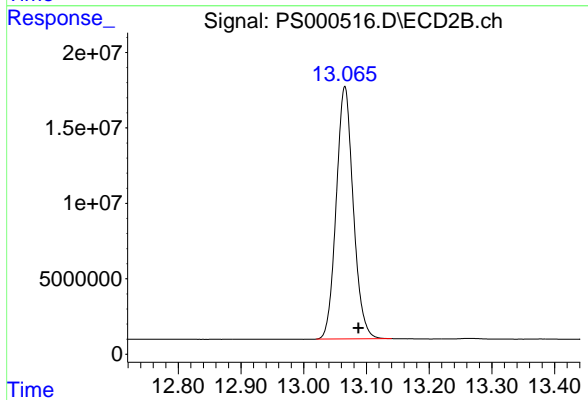
R.T.: 12.593 min
 Delta R.T.: -0.023 min
 Response: 233302728
 Conc: 724.61 ng/ml



#9 2,4-D

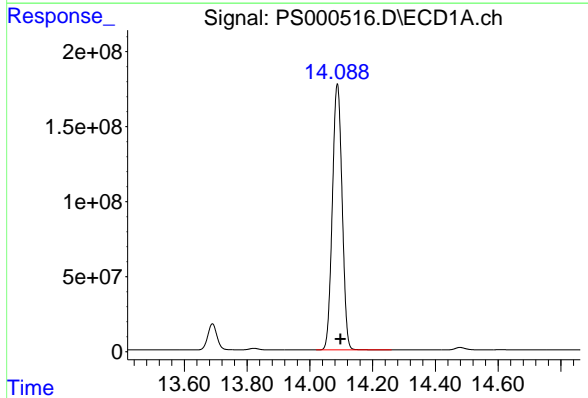
R.T.: 13.690 min
Delta R.T.: -0.009 min
Response: 348175200
Conc: 727.94 ng/ml

Instrument :
ECD_S
ClientSampleId :



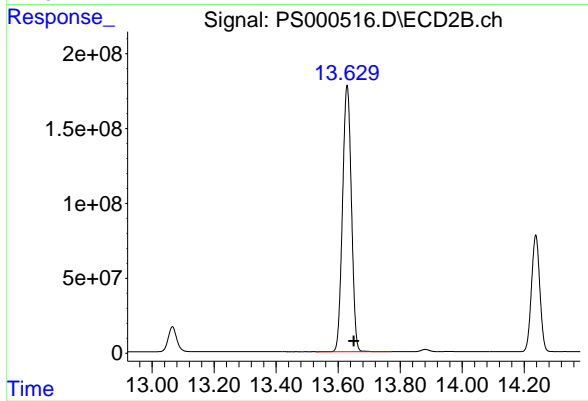
#9 2,4-D

R.T.: 13.066 min
Delta R.T.: -0.022 min
Response: 315711308
Conc: 742.85 ng/ml



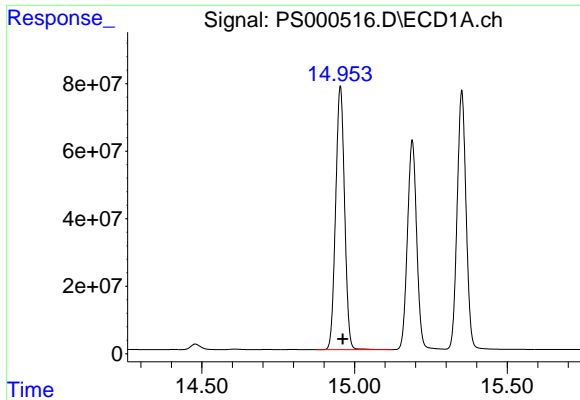
#10 Pentachlorophenol

R.T.: 14.088 min
Delta R.T.: -0.009 min
Response: 3820427233
Conc: 727.71 ng/ml



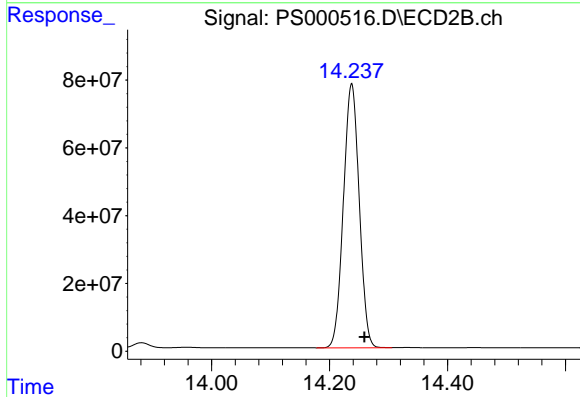
#10 Pentachlorophenol

R.T.: 13.629 min
Delta R.T.: -0.022 min
Response: 3530339038
Conc: 746.27 ng/ml

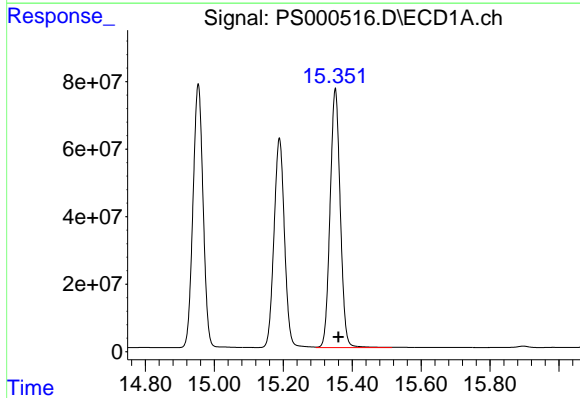


#11 2,4,5-TP (SILVEX)
 R.T.: 14.953 min
 Delta R.T.: -0.009 min
 Response: 1585094250
 Conc: 730.18 ng/ml

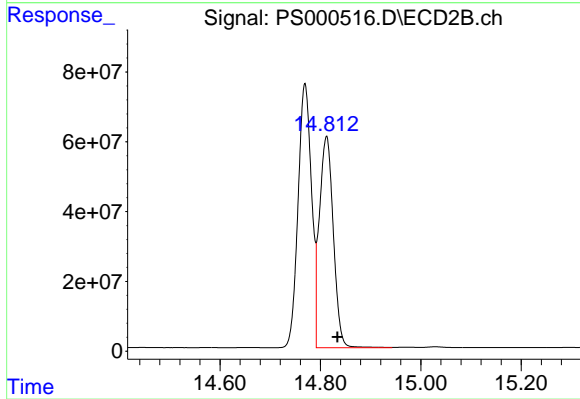
Instrument :
 ECD_S
 ClientSampleId :



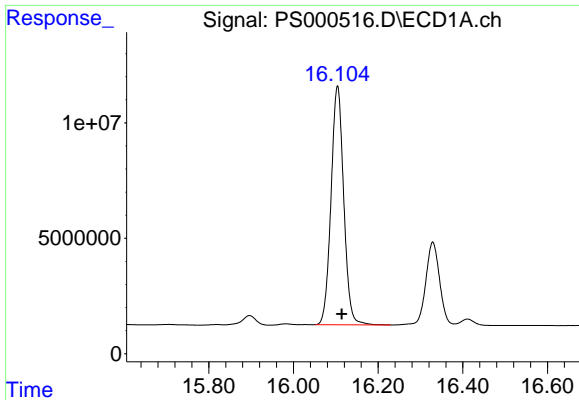
#11 2,4,5-TP (SILVEX)
 R.T.: 14.238 min
 Delta R.T.: -0.022 min
 Response: 1449796359
 Conc: 745.01 ng/ml



#12 2,4,5-T
 R.T.: 15.351 min
 Delta R.T.: -0.009 min
 Response: 1565058013
 Conc: 726.83 ng/ml

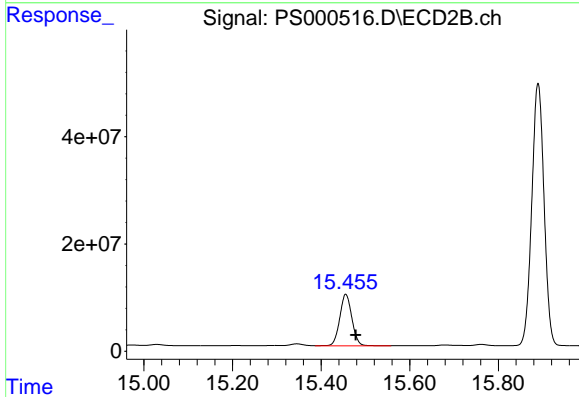


#12 2,4,5-T
 R.T.: 14.812 min
 Delta R.T.: -0.022 min
 Response: 1163133391
 Conc: 687.78 ng/ml

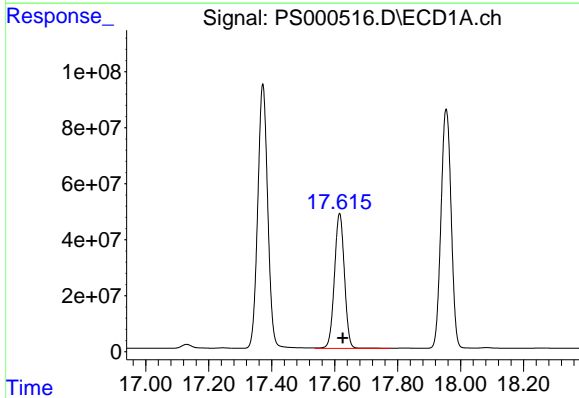


#13 2,4-DB
 R.T.: 16.104 min
 Delta R.T.: -0.010 min
 Response: 214489000
 Conc: 728.52 ng/ml

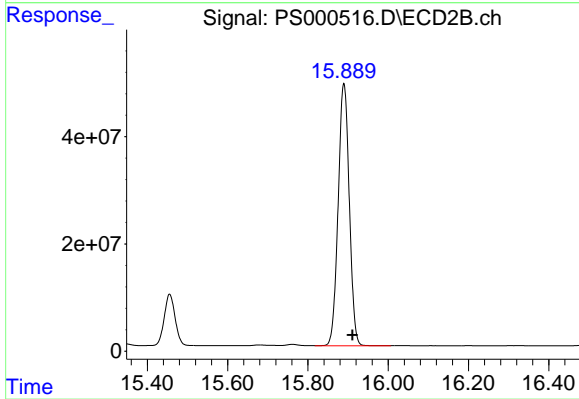
Instrument :
 ECD_S
 ClientSampled :



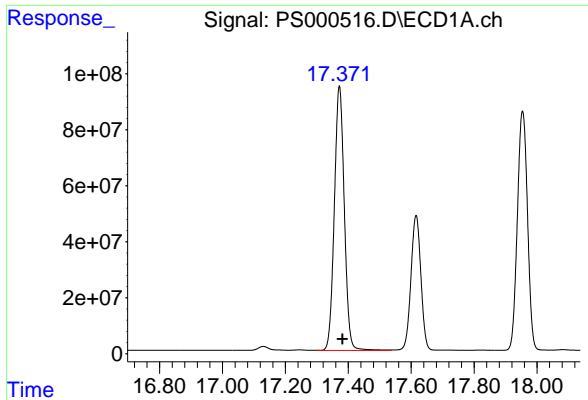
#13 2,4-DB
 R.T.: 15.455 min
 Delta R.T.: -0.023 min
 Response: 182900198
 Conc: 738.85 ng/ml



#14 DINOSEB
 R.T.: 17.616 min
 Delta R.T.: -0.010 min
 Response: 1062454889
 Conc: 713.48 ng/ml



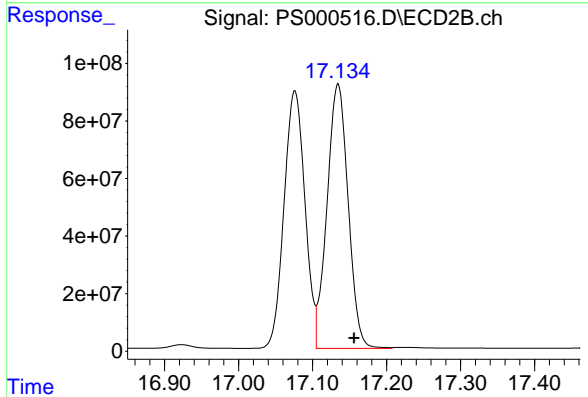
#14 DINOSEB
 R.T.: 15.890 min
 Delta R.T.: -0.022 min
 Response: 940544839
 Conc: 720.96 ng/ml



#15 Picloram

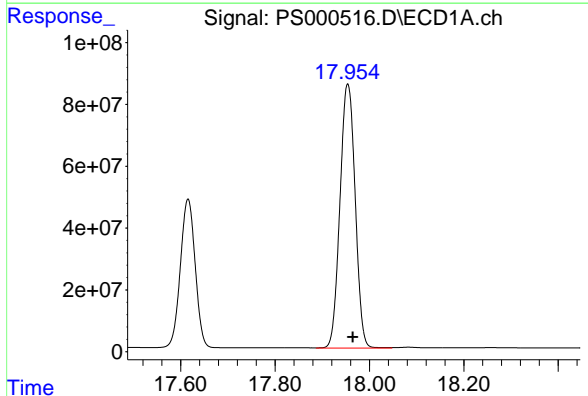
R.T.: 17.372 min
 Delta R.T.: -0.010 min
 Response: 2078988672
 Conc: 711.87 ng/ml

Instrument :
 ECD_S
 ClientSampleId :



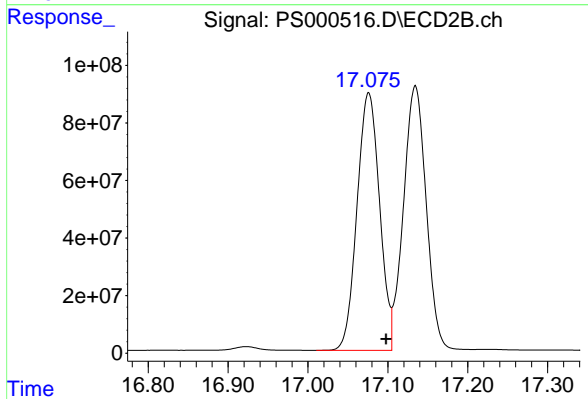
#15 Picloram

R.T.: 17.134 min
 Delta R.T.: -0.022 min
 Response: 1821711821
 Conc: 730.33 ng/ml



#16 DCPA

R.T.: 17.954 min
 Delta R.T.: -0.010 min
 Response: 1912881726
 Conc: 746.50 ng/ml



#16 DCPA

R.T.: 17.076 min
 Delta R.T.: -0.022 min
 Response: 1755737344
 Conc: 761.39 ng/ml