

Data Path : Z:\pestpcbsrv\HPCHEM1\ECD_S\Data\PS062018\
 Data File : PS000509.D
 Signal(s) : Signal #1: ECD1A.ch Signal #2: ECD2B.ch
 Acq On : 21 Jun 2018 02:44
 Operator : UA
 Sample : J3249-10
 Misc :
 ALS Vial : 25 Sample Multiplier: 1

Instrument :
 ECD_S
ClientSampleId :
 PL-01-061818-E

Manual Integrations
APPROVED
 UGO
 6/21/2018 4:33:37 PM

Integration File signal 1: autoint1.e
 Integration File signal 2: autoint2.e
 Quant Time: Jun 21 03:27:06 2018
 Quant Method : \\TERASTORAGE\Terastorage\pestpcbsrv\HPCHEM1\ECD_S\Method\PS061718.M
 Quant Title : 8080.M
 QLast Update : Mon Jun 18 00:27:44 2018
 Response via : Initial Calibration
 Integrator: ChemStation

Volume Inj. : 2 µl
 Signal #1 Phase : Rtx-CLPesticides Signal #2 Phase: Rtx-CLPesticides2
 Signal #1 Info : 30M x 0.32mm x0.5 Signal #2 Info : 30M x 0.32mm x 0.25µm

Compound	RT#1	RT#2	Resp#1	Resp#2	ng/ml	ng/ml

System Monitoring Compounds						
4) S 2,4-DCAA	11.839	11.216	83251646	71598196	221.029	210.392m
Target Compounds						

(f)=RT Delta > 1/2 Window (#)=Amounts differ by > 25% (m)=manual int.

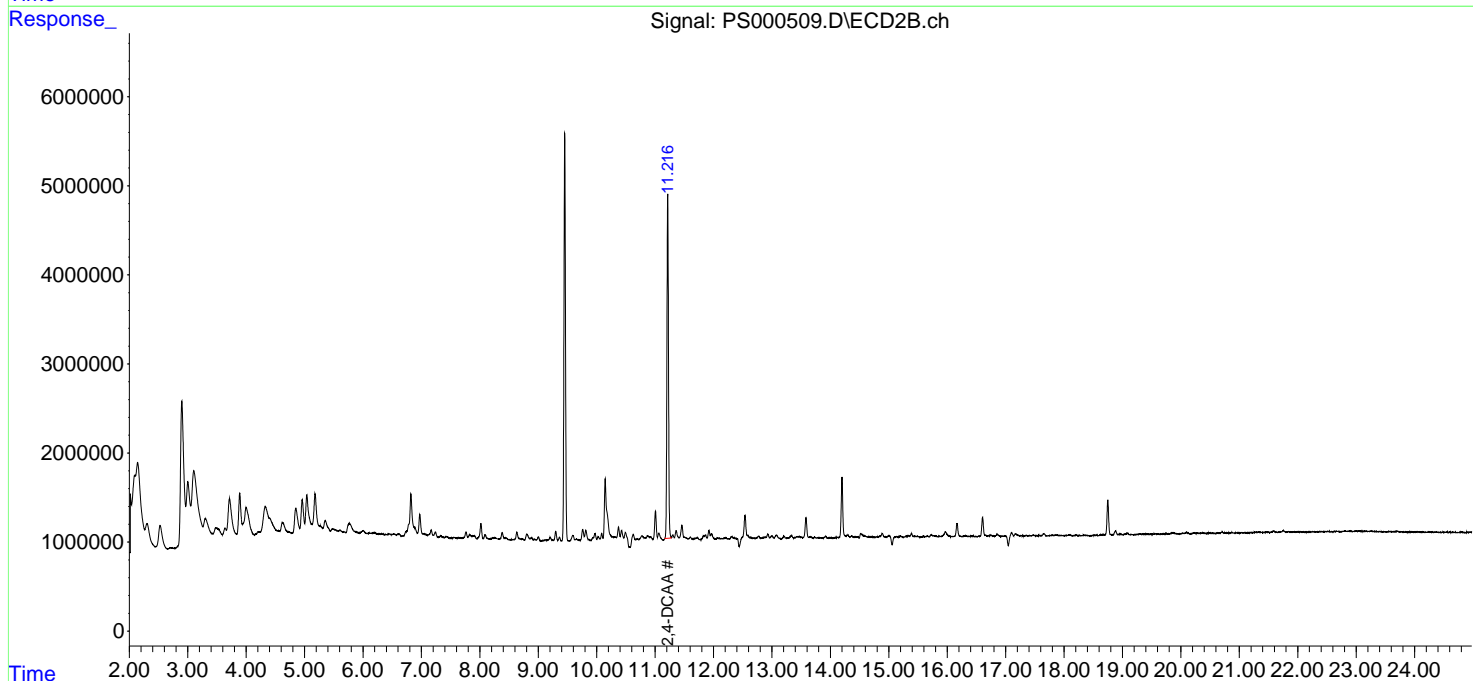
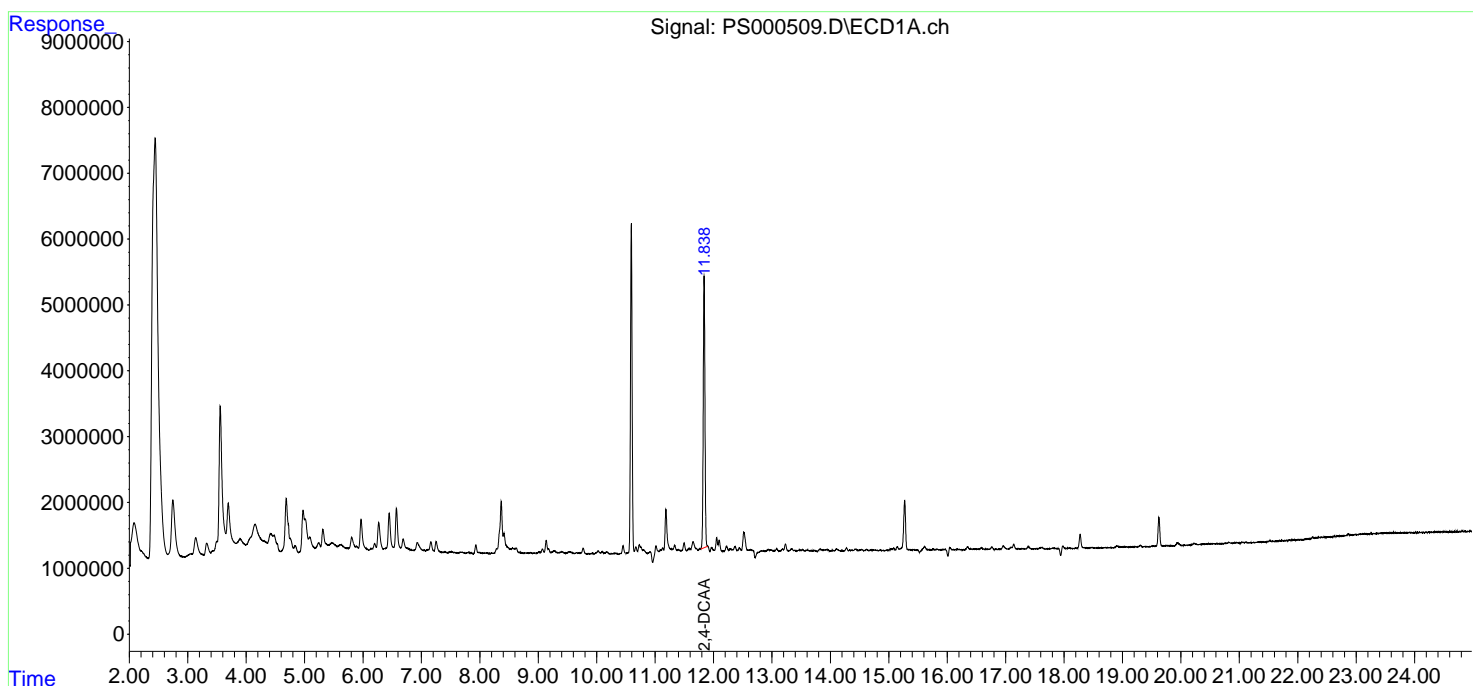
Data Path : Z:\pestpcbsrv\HPCHEM1\ECD_S\Data\PS062018\
 Data File : PS000509.D
 Signal(s) : Signal #1: ECD1A.ch Signal #2: ECD2B.ch
 Acq On : 21 Jun 2018 02:44
 Operator : UA
 Sample : J3249-10
 Misc :
 ALS Vial : 25 Sample Multiplier: 1

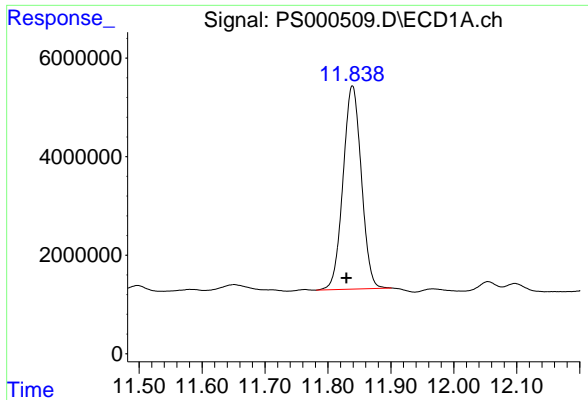
Instrument :
 ECD_S
ClientSampled :
 PL-01-061818-E

Manual Integrations
APPROVED
 UGO
 6/21/2018 4:33:37 PM

Integration File signal 1: autoint1.e
 Integration File signal 2: autoint2.e
 Quant Time: Jun 21 03:27:06 2018
 Quant Method : \\TERASTORAGE\Terastorage\pestpcbsrv\HPCHEM1\ECD_S\Method\PS061718.M
 Quant Title : 8080.M
 QLast Update : Mon Jun 18 00:27:44 2018
 Response via : Initial Calibration
 Integrator: ChemStation

Volume Inj. : 2 µl
 Signal #1 Phase : Rtx-CLPesticides Signal #2 Phase: Rtx-CLPesticides2
 Signal #1 Info : 30M x 0.32mm x0.5 Signal #2 Info : 30M x 0.32mm x 0.25µm





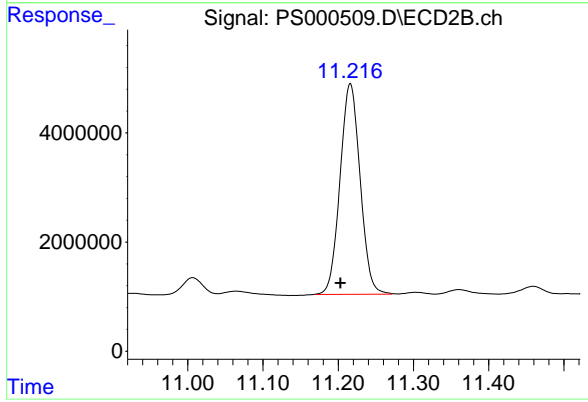
#4 2,4-DCAA

R.T.: 11.839 min
Delta R.T.: 0.010 min
Response: 83251646
Conc: 221.03 ng/ml

Instrument :
ECD_S
ClientSampleId :
PL-01-061818-E

Manual Integrations
APPROVED

UGO
6/21/2018 4:33:37 PM



#4 2,4-DCAA

R.T.: 11.216 min
Delta R.T.: 0.013 min
Response: 71598196
Conc: 210.39 ng/ml m