

Data Path : Z:\pestpcbsrv\HPCHEM1\ECD\_S\Data\PS062220\  
 Data File : PS010893.D  
 Signal(s) : Signal #1: ECD1A.ch Signal #2: ECD2B.ch  
 Acq On : 22 Jun 2020 09:24  
 Operator : DD\AJ  
 Sample : HEXANE  
 Misc :  
 ALS Vial : 1 Sample Multiplier: 1

Instrument :  
 ECD\_S  
 ClientSampleId :

Integration File signal 1: autoint1.e  
 Integration File signal 2: autoint2.e  
 Quant Time: Jun 22 13:56:40 2020  
 Quant Method : Z:\pestpcbsrv\HPCHEM1\ECD\_S\Method\PS052920.M  
 Quant Title : 8080.M  
 QLast Update : Fri May 29 15:43:50 2020  
 Response via : Initial Calibration  
 Integrator: ChemStation

Volume Inj. : 2 µl  
 Signal #1 Phase : Rtx-CLPesticides Signal #2 Phase: Rtx-CLPesticides2  
 Signal #1 Info : 30M x 0.32mm x0.5 Signal #2 Info : 30M x 0.32mm x 0.25µm

| Compound | RT#1 | RT#2 | Resp#1 | Resp#2 | ng/ml | ng/ml |
|----------|------|------|--------|--------|-------|-------|
|----------|------|------|--------|--------|-------|-------|

System Monitoring Compounds

Target Compounds

|       |              |        |        |          |          |        |        |   |
|-------|--------------|--------|--------|----------|----------|--------|--------|---|
| 2) T  | 3,5-DICHL... | 6.484  | 0.000  | 45942853 | 0        | 42.026 | N.D.   | # |
| 5) T  | DICAMBA      | 0.000  | 7.155  | 0        | 33981360 | N.D.   | 15.097 |   |
| 6) T  | MCPP         | 0.000  | 7.155  | 0        | 33981360 | N.D.   | 18.235 |   |
| 12) T | 2,4,5-T      | 0.000  | 9.244  | 0        | 10693698 | N.D.   | 3.563  |   |
| 15) T | Picloram     | 11.039 | 11.013 | 40683283 | 43316462 | 7.969  | 10.499 | # |
| 16) T | DCPA         | 0.000  | 11.013 | 0        | 43316462 | N.D.   | 11.681 |   |

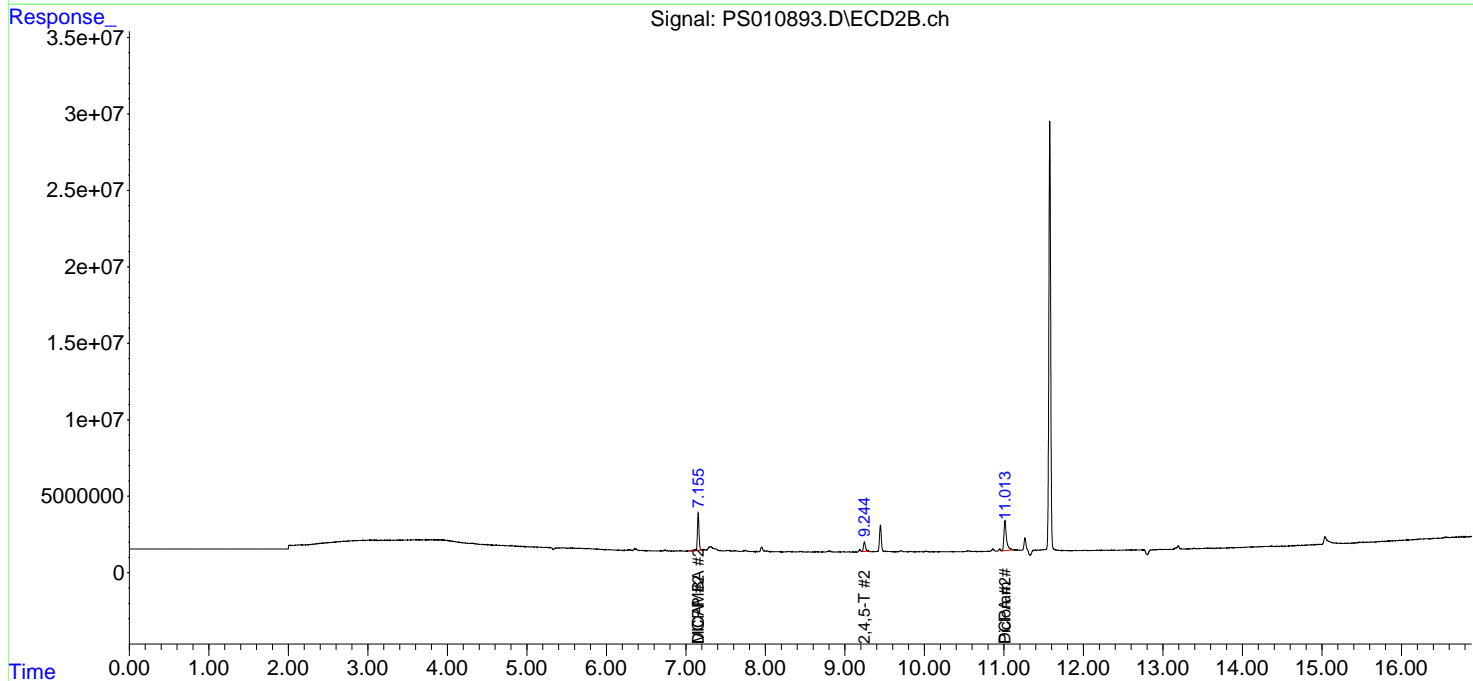
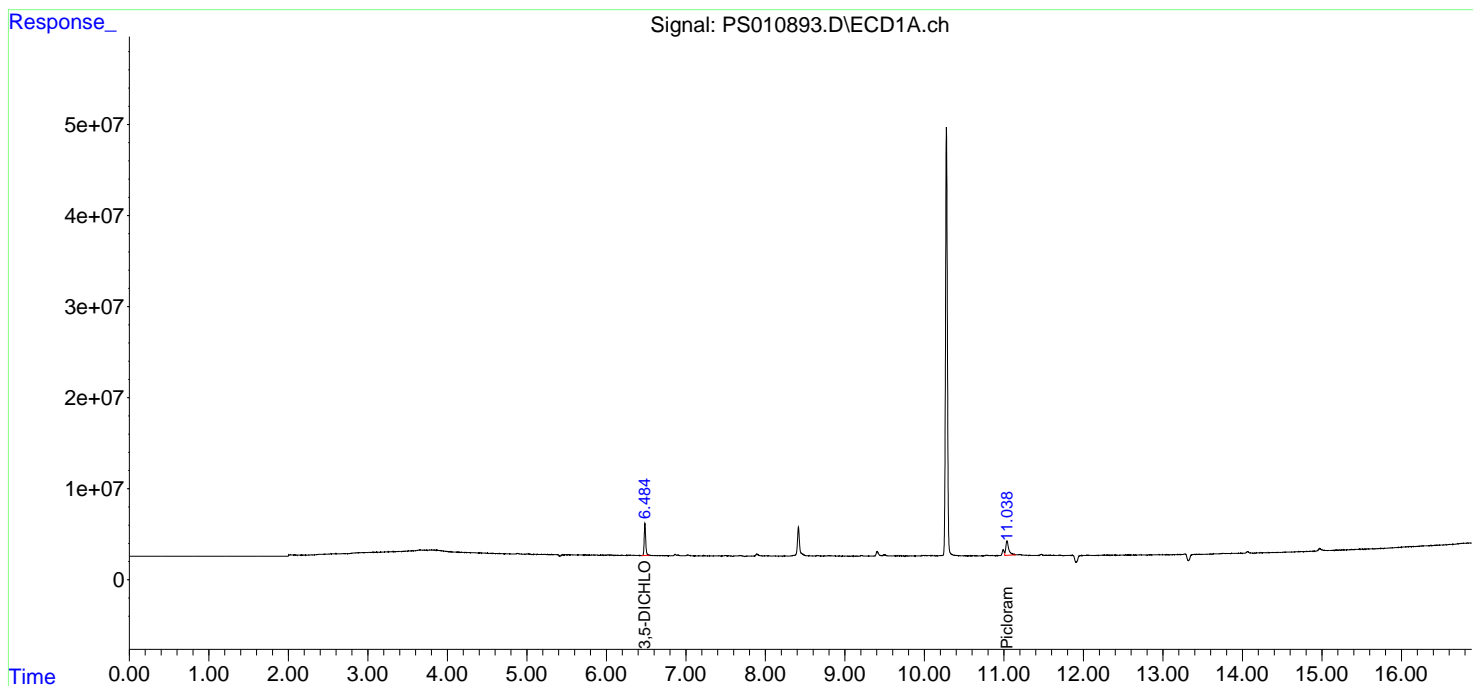
(f)=RT Delta > 1/2 Window (#)=Amounts differ by > 25% (m)=manual int.

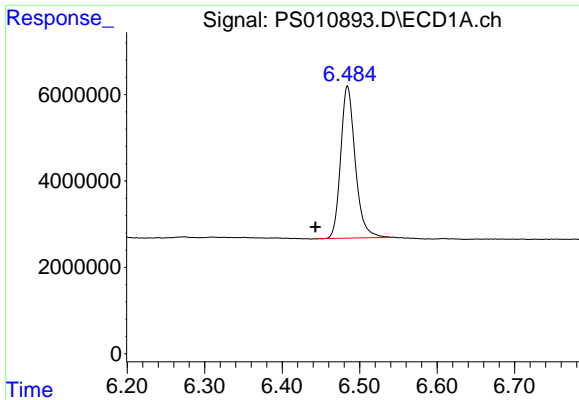
Data Path : Z:\pestpcbsrv\HPCHEM1\ECD\_S\Data\PS062220\  
 Data File : PS010893.D  
 Signal(s) : Signal #1: ECD1A.ch Signal #2: ECD2B.ch  
 Acq On : 22 Jun 2020 09:24  
 Operator : DD\AJ  
 Sample : HEXANE  
 Misc :  
 ALS Vial : 1 Sample Multiplier: 1

Instrument :  
 ECD\_S  
 ClientSampleId :

Integration File signal 1: autoint1.e  
 Integration File signal 2: autoint2.e  
 Quant Time: Jun 22 13:56:40 2020  
 Quant Method : Z:\pestpcbsrv\HPCHEM1\ECD\_S\Method\PS052920.M  
 Quant Title : 8080.M  
 QLast Update : Fri May 29 15:43:50 2020  
 Response via : Initial Calibration  
 Integrator: ChemStation

Volume Inj. : 2 µl  
 Signal #1 Phase : Rtx-CLPesticides Signal #2 Phase: Rtx-CLPesticides2  
 Signal #1 Info : 30M x 0.32mm x 0.5 Signal #2 Info : 30M x 0.32mm x 0.25µm

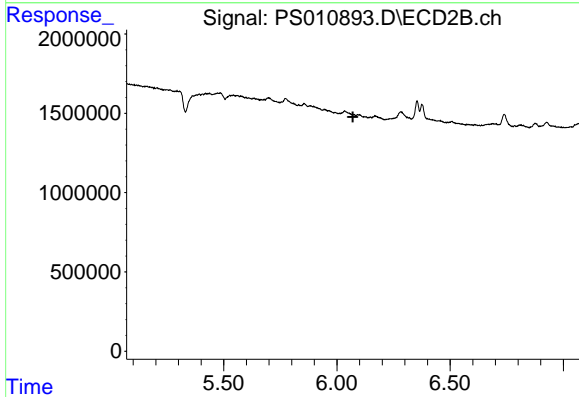




#2 3,5-DICHLOROBENZOIC ACID

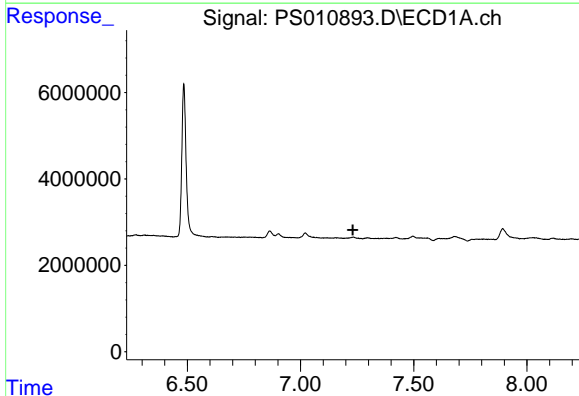
R.T.: 6.484 min  
 Delta R.T.: 0.041 min  
 Response: 45942853  
 Conc: 42.03 ng/ml

Instrument :  
 ECD\_S  
 ClientSampled :



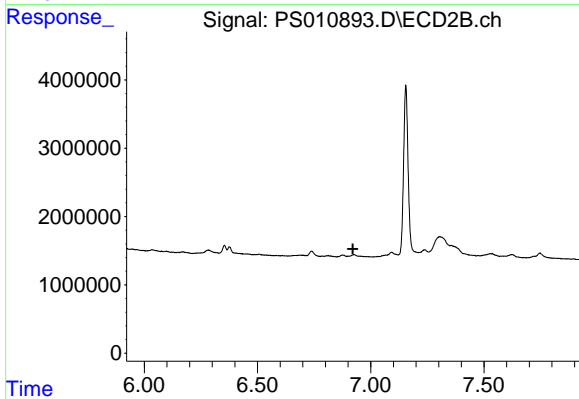
#2 3,5-DICHLOROBENZOIC ACID

R.T.: 0.000 min  
 Exp R.T. : 6.070 min  
 Response: 0  
 Conc: N.D.



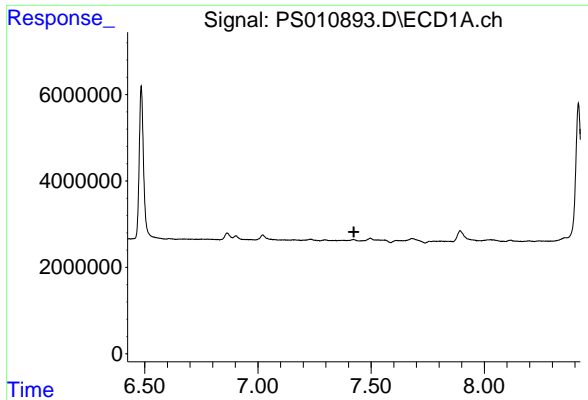
#4 2,4-DCAA

R.T.: 0.000 min  
 Exp R.T. : 7.231 min  
 Response: 0  
 Conc: N.D.



#4 2,4-DCAA

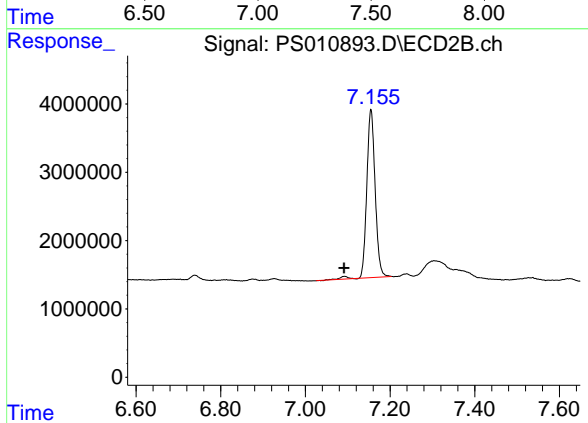
R.T.: 0.000 min  
 Exp R.T. : 6.921 min  
 Response: 0  
 Conc: N.D.



#5 DICAMBA

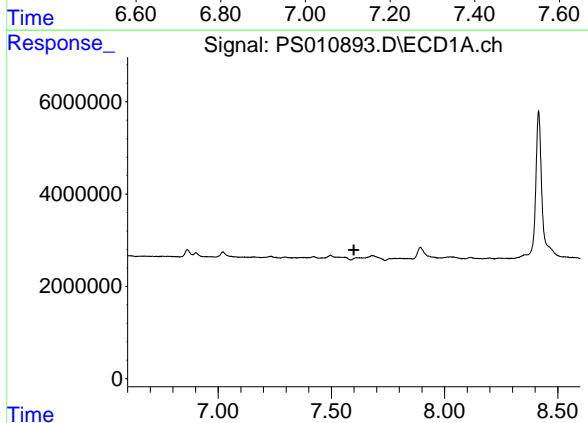
R.T.: 0.000 min  
 Exp R.T. : 7.423 min  
 Response: 0  
 Conc: N.D.

Instrument :  
 ECD\_S  
 ClientSampled :



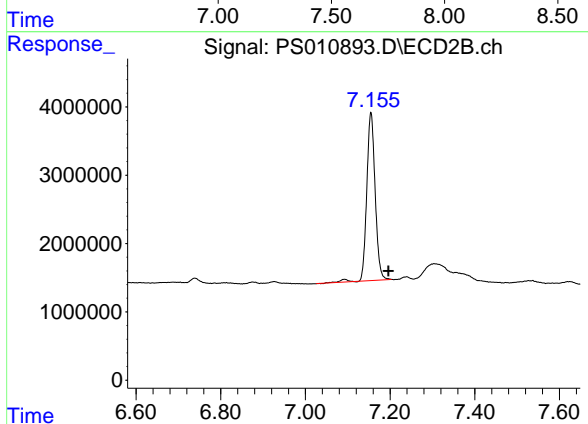
#5 DICAMBA

R.T.: 7.155 min  
 Delta R.T.: 0.064 min  
 Response: 33981360  
 Conc: 15.10 ng/ml



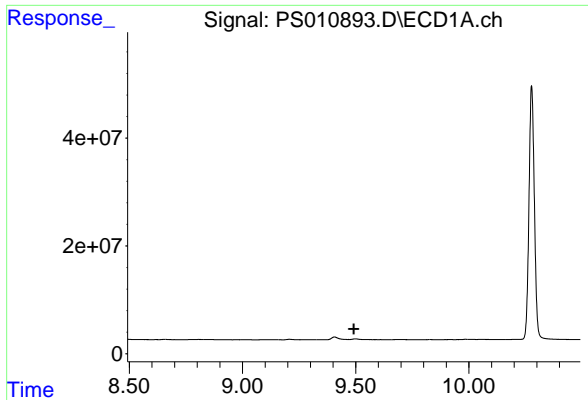
#6 MCPP

R.T.: 0.000 min  
 Exp R.T. : 7.600 min  
 Response: 0  
 Conc: N.D.



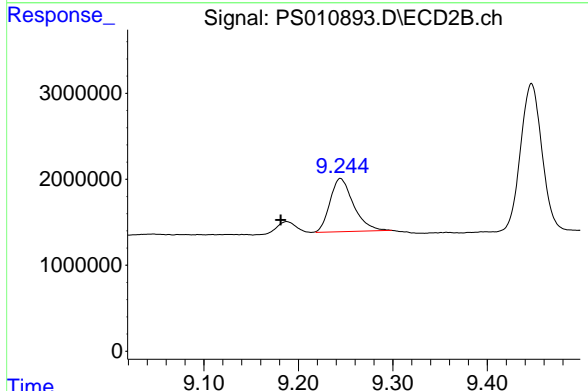
#6 MCPP

R.T.: 7.155 min  
 Delta R.T.: -0.041 min  
 Response: 33981360  
 Conc: 18.24 ug/ml

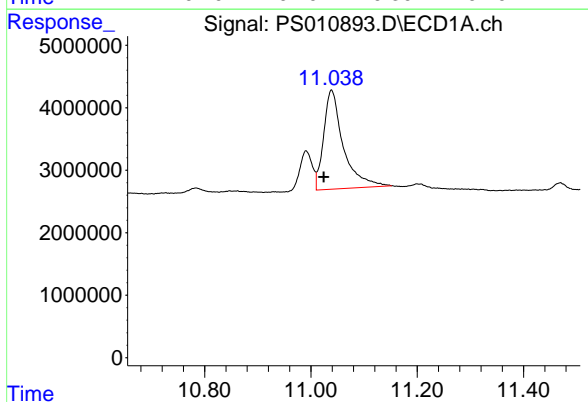


#12 2,4,5-T  
 R.T.: 0.000 min  
 Exp R.T.: 9.492 min  
 Response: 0  
 Conc: N.D.

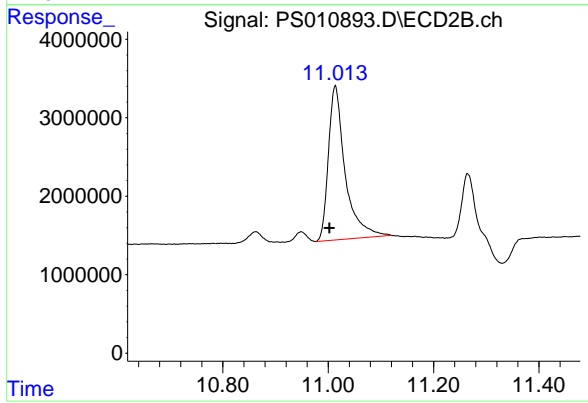
Instrument :  
 ECD\_S  
 ClientSampled :



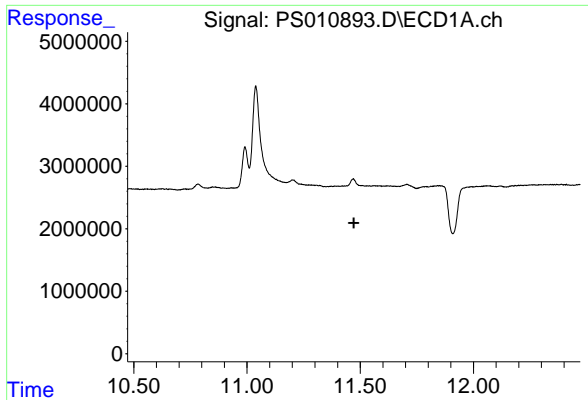
#12 2,4,5-T  
 R.T.: 9.244 min  
 Delta R.T.: 0.063 min  
 Response: 10693698  
 Conc: 3.56 ng/ml



#15 Picloram  
 R.T.: 11.039 min  
 Delta R.T.: 0.015 min  
 Response: 40683283  
 Conc: 7.97 ng/ml

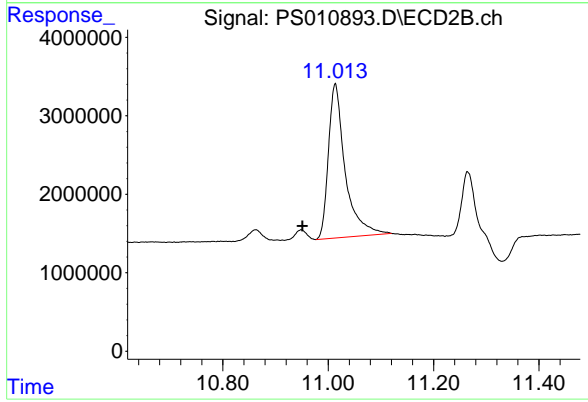


#15 Picloram  
 R.T.: 11.013 min  
 Delta R.T.: 0.011 min  
 Response: 43316462  
 Conc: 10.50 ng/ml



#16 DCPA  
R.T.: 0.000 min  
Exp R.T.: 11.472 min  
Response: 0  
Conc: N.D.

Instrument :  
ECD\_S  
ClientSampleId :



#16 DCPA  
R.T.: 11.013 min  
Delta R.T.: 0.062 min  
Response: 43316462  
Conc: 11.68 ng/ml