

Data Path : Z:\pestpcbsrv\HPCHEM1\ECD_S\Data\PS062221\
 Data File : PS015920.D
 Signal(s) : Signal #1: ECD1A.ch Signal #2: ECD2B.ch
 Acq On : 22 Jun 2021 16:41
 Operator : DD\AJ
 Sample : M2762-02
 Misc :
 ALS Vial : 18 Sample Multiplier: 1

Instrument :
 ECD_S
 ClientSampleId :
 WC_AQUEOUS_DBD

Integration File signal 1: autoint1.e
 Integration File signal 2: autoint2.e
 Quant Time: Jun 23 01:28:21 2021
 Quant Method : Z:\pestpcbsrv\HPCHEM1\ECD_S\Method\PS061521.M
 Quant Title : 8080.M
 QLast Update : Tue Jun 15 18:15:49 2021
 Response via : Initial Calibration
 Integrator: ChemStation

Volume Inj. : 2 µl
 Signal #1 Phase : Rtx-CLPesticides Signal #2 Phase: Rtx-CLPesticides2
 Signal #1 Info : 30M x 0.32mm x0.5 Signal #2 Info : 30M x 0.32mm x 0.25µm

	Compound	RT#1	RT#2	Resp#1	Resp#2	ng/ml	ng/ml

System Monitoring Compounds							
4) S	2,4-DCAA	7.188	6.766	698.3E6	273.7E6	420.267	543.310 #
Target Compounds							
2) T	3,5-DICHL...	6.455f	5.982	-4636221	61076537	N.D.	80.986
3) T	4-Nitroph...	7.026	6.332f	12116240	14896793	13.327	48.693 #
5) T	DICAMBA	7.367	6.888f	13086559	12983726	2.036	6.257 #
6) T	MCPP	7.548	7.089f	6158512	28440261	1.134	17.063 #
7) T	MCPA	0.000	7.232	0	9319715	N.D.	3.633
8) T	DICHLORPROP	8.086	7.570	15046104	266.5E6	9.503	514.815 #
9) T	2,4-D	8.316	7.825	180927	16706798	<MDL	26.934 #
10) T	Pentachlo...	8.631	8.330f	52773661	125.8E6	2.445	17.906 #
12) T	2,4,5-T	9.398f	9.020	143.3E6	152.3E6	16.227	53.988 #
13) T	2,4-DB	9.968	9.526	130.1E6	441.1E6	63.608	1180.894 #
14) T	DINOSEB	11.118f	9.878	1594.5E6	442.4E6	246.199	219.627
15) T	Picloram	11.023f	10.835	1482.7E6	228.7E6	108.457	54.375 #
16) T	DCPA	11.427	10.758	249.9E6	57672023	18.891	13.718 #

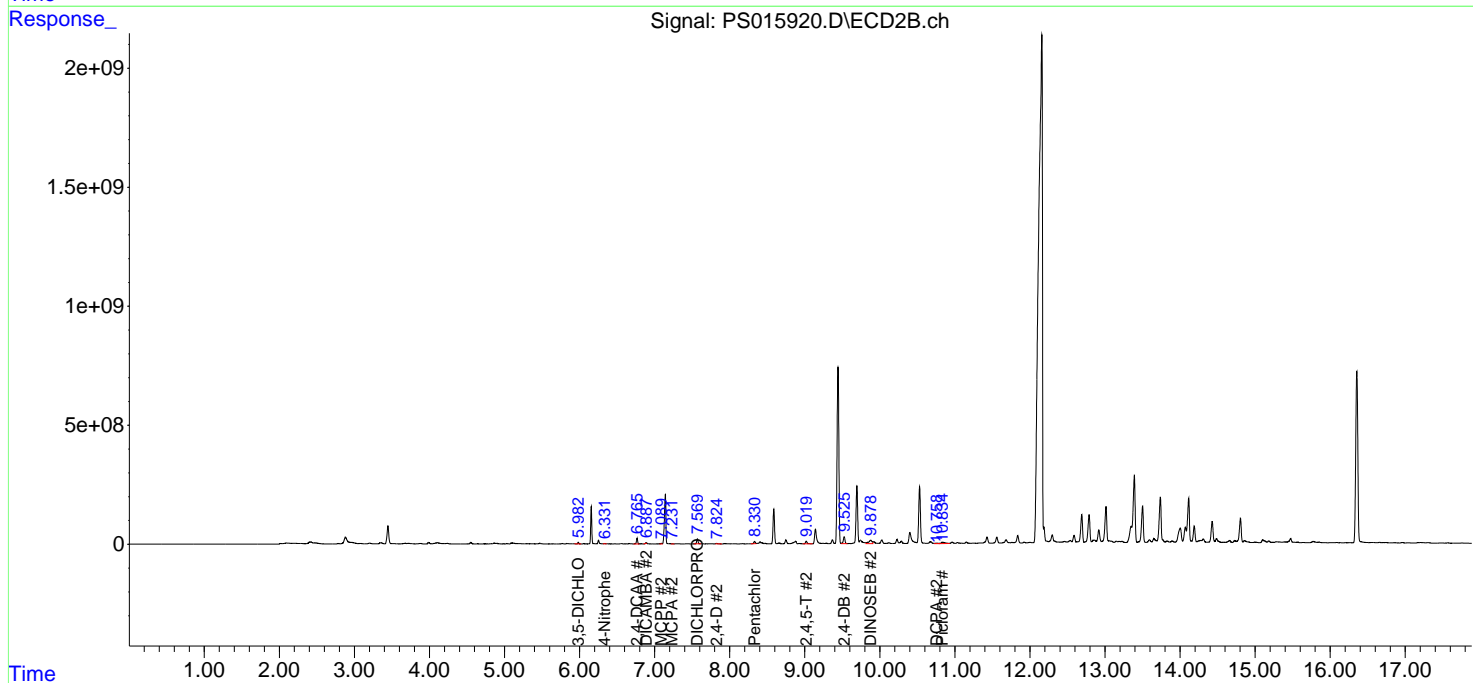
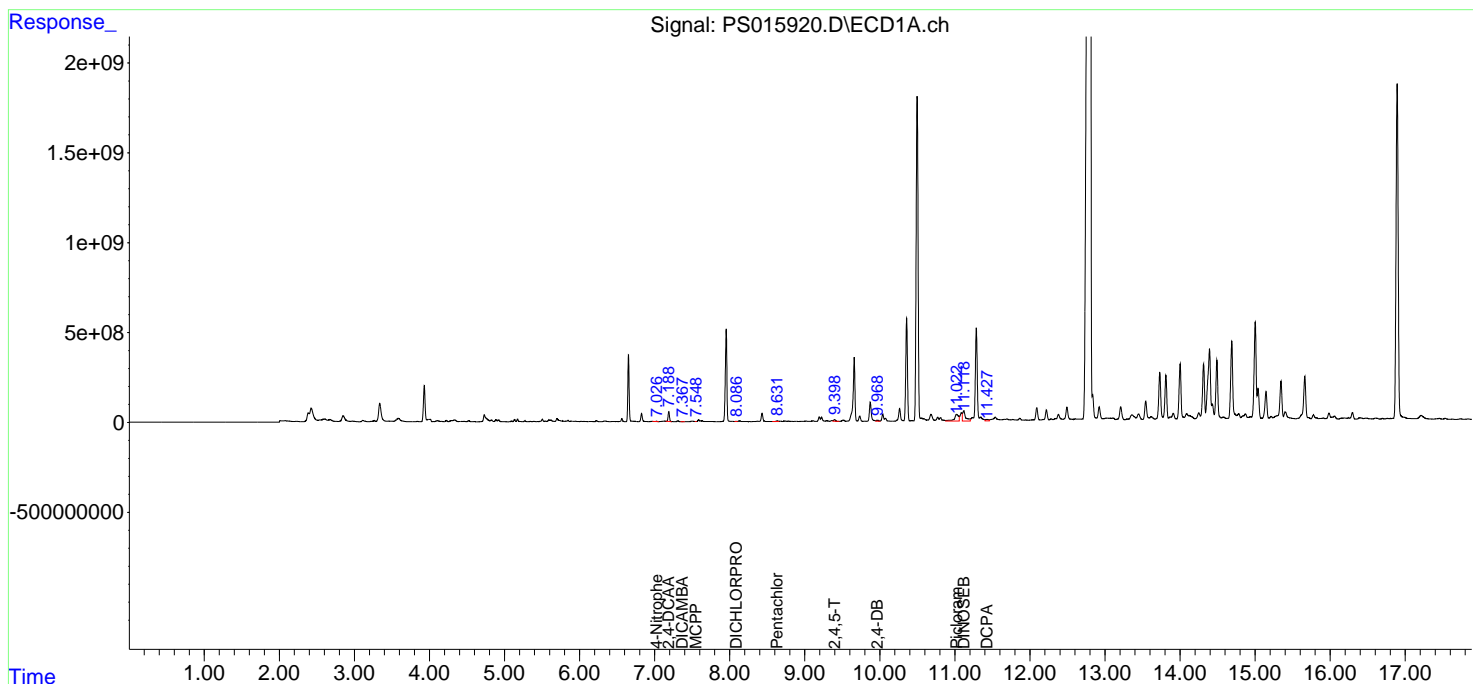
(f)=RT Delta > 1/2 Window (#)=Amounts differ by > 25% (m)=manual int.

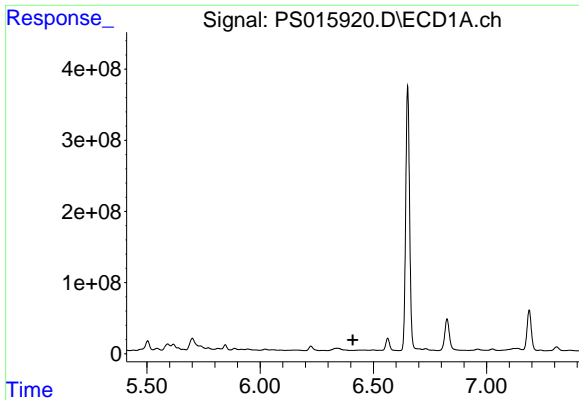
Data Path : Z:\pestpcbsrv\HPCHEM1\ECD_S\Data\PS062221\
 Data File : PS015920.D
 Signal(s) : Signal #1: ECD1A.ch Signal #2: ECD2B.ch
 Acq On : 22 Jun 2021 16:41
 Operator : DD\AJ
 Sample : M2762-02
 Misc :
 ALS Vial : 18 Sample Multiplier: 1

Instrument :
 ECD_S
 ClientSampleID :
 WC_AQUEOUS_DBD

Integration File signal 1: autoint1.e
 Integration File signal 2: autoint2.e
 Quant Time: Jun 23 01:28:21 2021
 Quant Method : Z:\pestpcbsrv\HPCHEM1\ECD_S\Method\PS061521.M
 Quant Title : 8080.M
 QLast Update : Tue Jun 15 18:15:49 2021
 Response via : Initial Calibration
 Integrator: ChemStation

Volume Inj. : 2 µl
 Signal #1 Phase : Rtx-CLPesticides Signal #2 Phase: Rtx-CLPesticides2
 Signal #1 Info : 30M x 0.32mm x0.5 Signal #2 Info : 30M x 0.32mm x 0.25µm

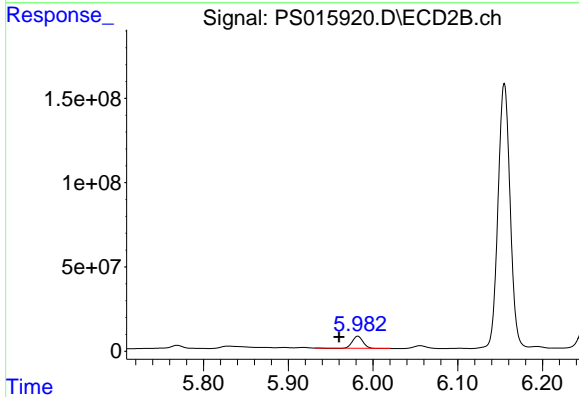




#2 3,5-DICHLORO BENZOIC ACID

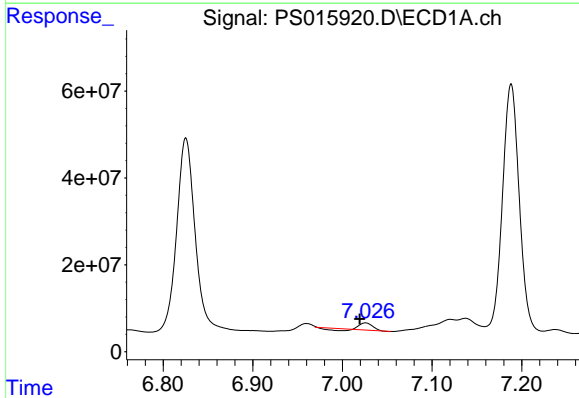
R.T.: 6.455 min
Delta R.T.: 0.045 min
Response: -4636221
Conc: N.D.

Instrument :
ECD_S
ClientSampleId :
WC_AQUEOUS_DBD



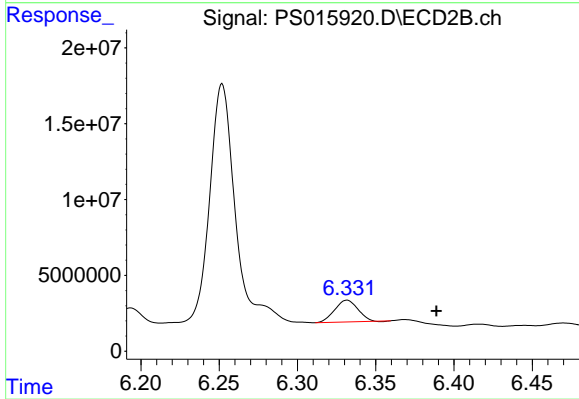
#2 3,5-DICHLORO BENZOIC ACID

R.T.: 5.982 min
Delta R.T.: 0.022 min
Response: 61076537
Conc: 80.99 ng/ml



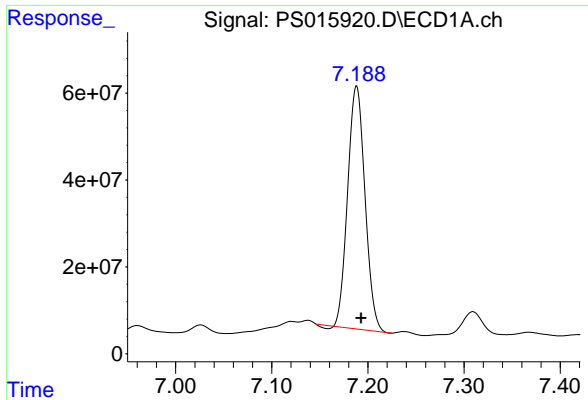
#3 4-Nitrophenol

R.T.: 7.026 min
Delta R.T.: 0.007 min
Response: 12116240
Conc: 13.33 ng/ml



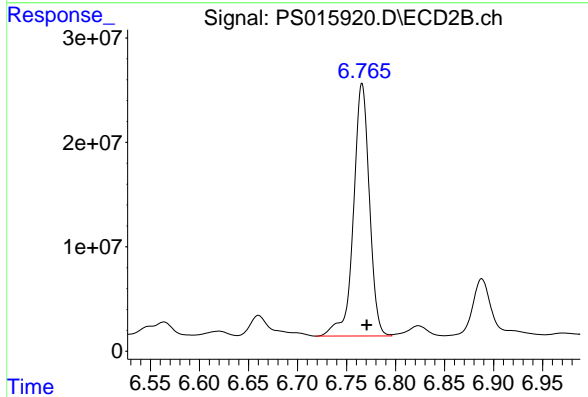
#3 4-Nitrophenol

R.T.: 6.332 min
Delta R.T.: -0.057 min
Response: 14896793
Conc: 48.69 ng/ml

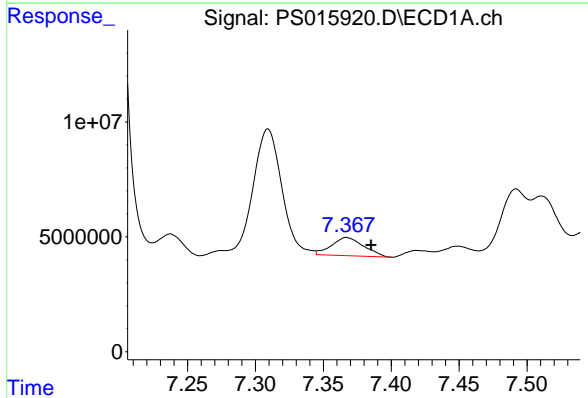


#4 2,4-DCAA
 R.T.: 7.188 min
 Delta R.T.: -0.005 min
 Response: 698250993
 Conc: 420.27 ng/ml

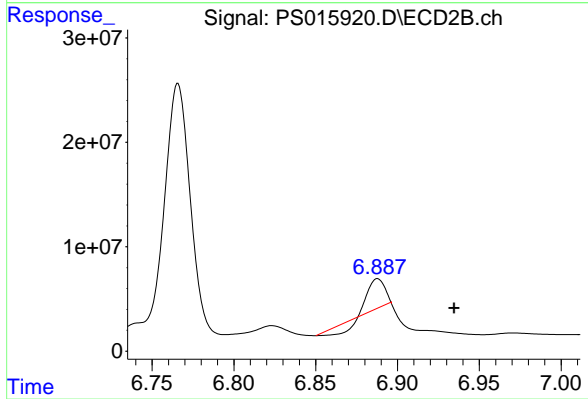
Instrument :
 ECD_S
 ClientSampleId :
 WC_AQUEOUS_DBD



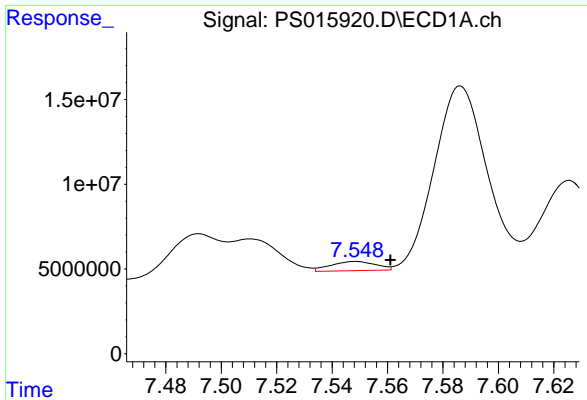
#4 2,4-DCAA
 R.T.: 6.766 min
 Delta R.T.: -0.005 min
 Response: 273747891
 Conc: 543.31 ng/ml



#5 DICAMBA
 R.T.: 7.367 min
 Delta R.T.: -0.018 min
 Response: 13086559
 Conc: 2.04 ng/ml

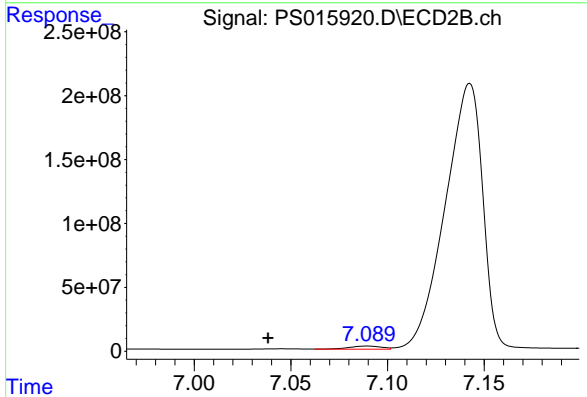


#5 DICAMBA
 R.T.: 6.888 min
 Delta R.T.: -0.047 min
 Response: 12983726
 Conc: 6.26 ng/ml

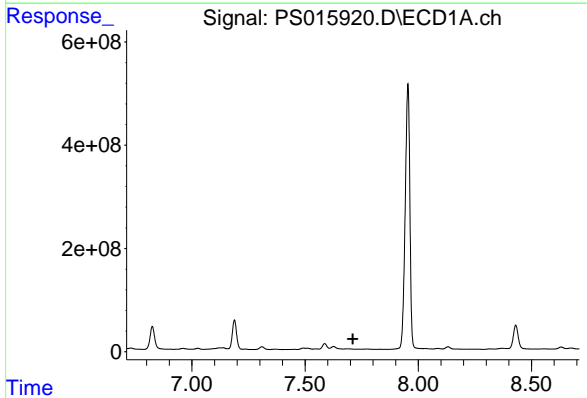


#6 MCP
 R.T.: 7.548 min
 Delta R.T.: -0.013 min
 Response: 6158512
 Conc: 1.13 ug/ml

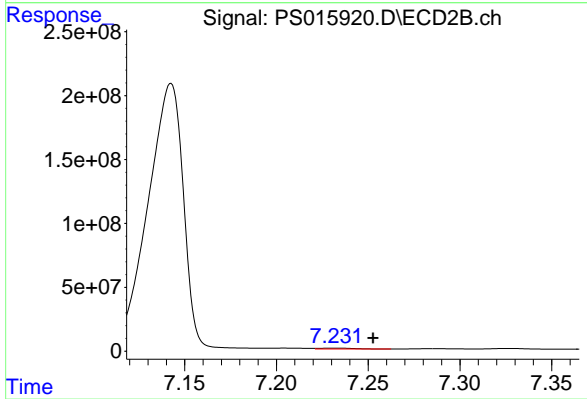
Instrument :
 ECD_S
 ClientSampleId :
 WC_AQUEOUS_DBD



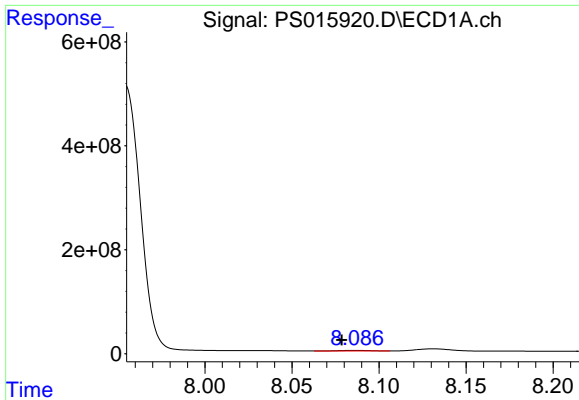
#6 MCP
 R.T.: 7.089 min
 Delta R.T.: 0.051 min
 Response: 28440261
 Conc: 17.06 ug/ml



#7 MCPA
 R.T.: 0.000 min
 Exp R.T. : 7.712 min
 Response: 0
 Conc: N.D.

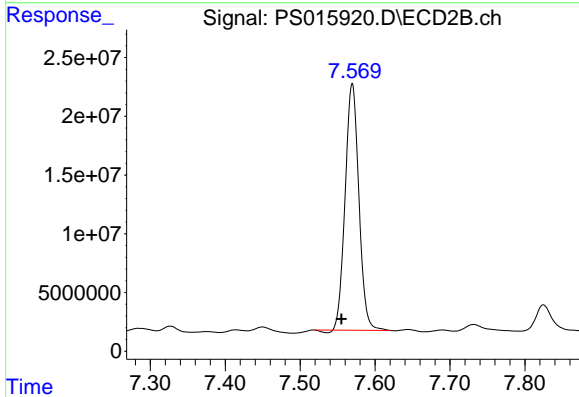


#7 MCPA
 R.T.: 7.232 min
 Delta R.T.: -0.021 min
 Response: 9319715
 Conc: 3.63 ug/ml

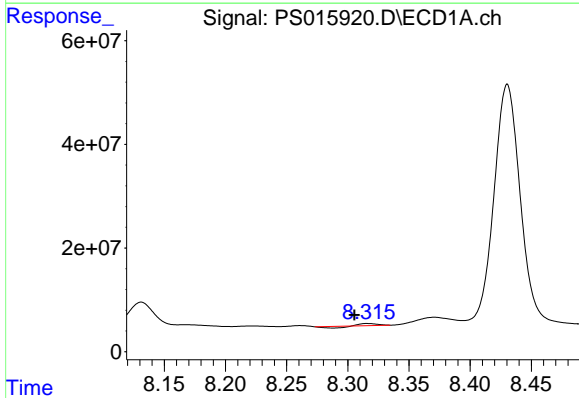


#8 DICHLORPROP
 R.T.: 8.086 min
 Delta R.T.: 0.008 min
 Response: 15046104
 Conc: 9.50 ng/ml

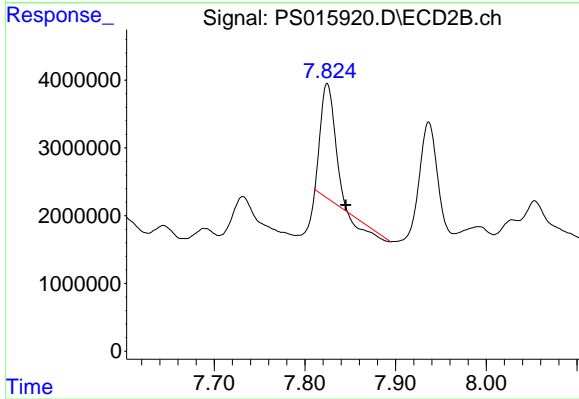
Instrument :
 ECD_S
 ClientSampleId :
 WC_AQUEOUS_DBD



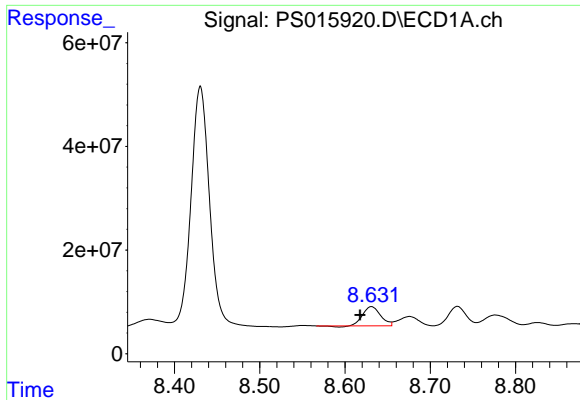
#8 DICHLORPROP
 R.T.: 7.570 min
 Delta R.T.: 0.014 min
 Response: 266542799
 Conc: 514.81 ng/ml



#9 2,4-D
 R.T.: 8.316 min
 Delta R.T.: 0.011 min
 Response: 180927
 Conc: N.D.

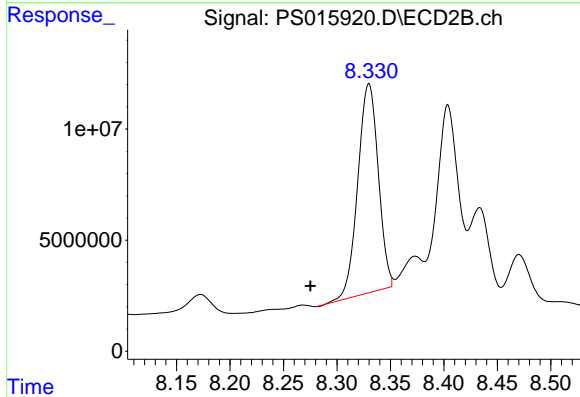


#9 2,4-D
 R.T.: 7.825 min
 Delta R.T.: -0.020 min
 Response: 16706798
 Conc: 26.93 ng/ml

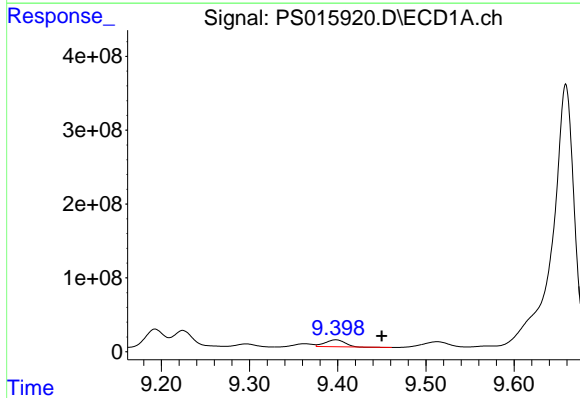


#10 Pentachlorophenol
 R.T.: 8.631 min
 Delta R.T.: 0.013 min
 Response: 52773661
 Conc: 2.45 ng/ml

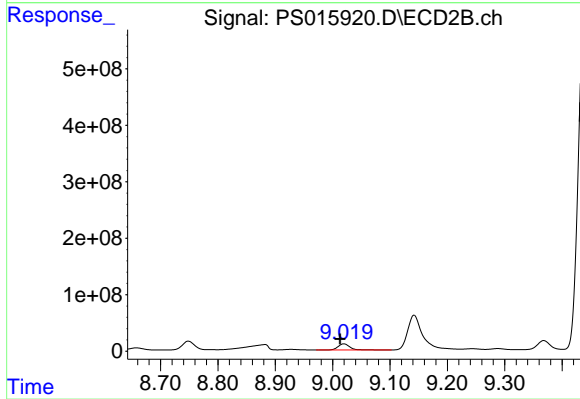
Instrument :
 ECD_S
 ClientSampleId :
 WC_AQUEOUS_DBD



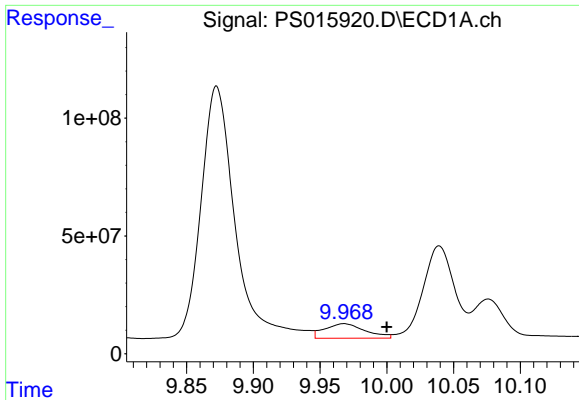
#10 Pentachlorophenol
 R.T.: 8.330 min
 Delta R.T.: 0.055 min
 Response: 125763632
 Conc: 17.91 ng/ml



#12 2,4,5-T
 R.T.: 9.398 min
 Delta R.T.: -0.052 min
 Response: 143257098
 Conc: 16.23 ng/ml

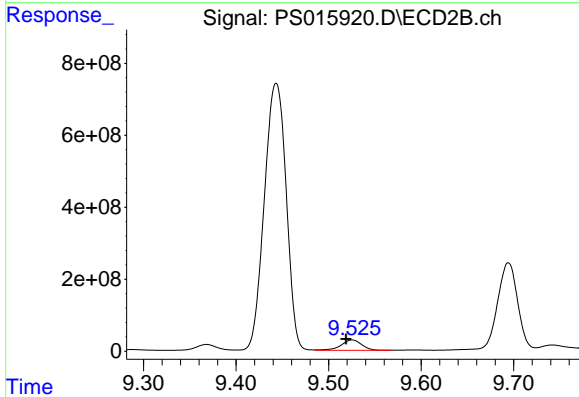


#12 2,4,5-T
 R.T.: 9.020 min
 Delta R.T.: 0.007 min
 Response: 152269997
 Conc: 53.99 ng/ml

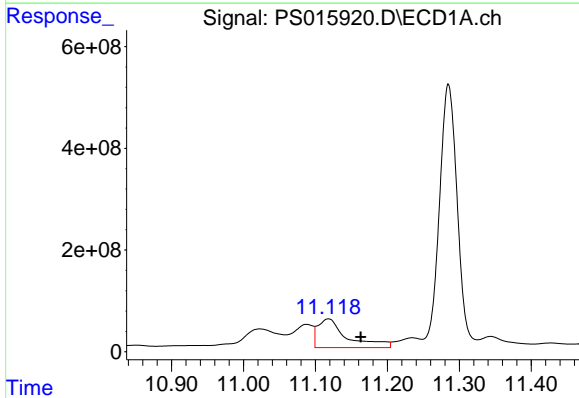


#13 2,4-DB
 R.T.: 9.968 min
 Delta R.T.: -0.032 min
 Response: 130113900
 Conc: 63.61 ng/ml

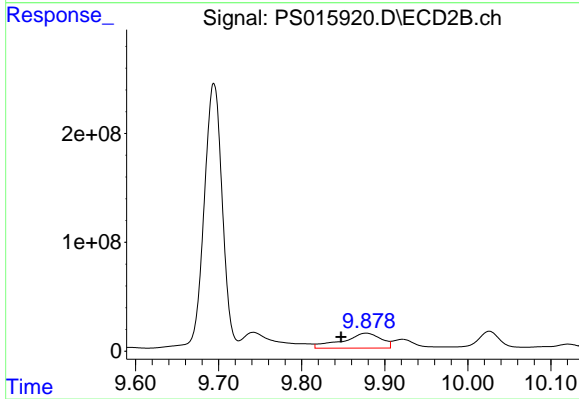
Instrument :
 ECD_S
 ClientSampleId :
 WC_AQUEOUS_DBD



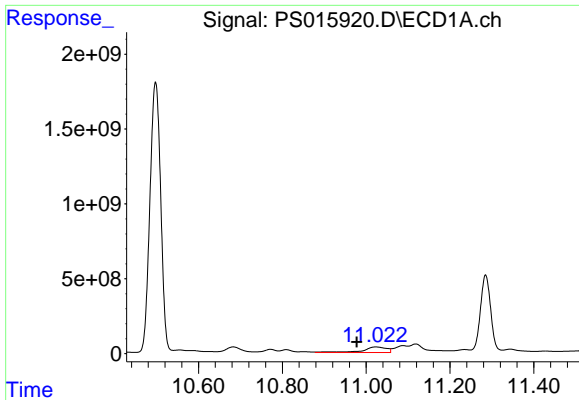
#13 2,4-DB
 R.T.: 9.526 min
 Delta R.T.: 0.007 min
 Response: 441051488
 Conc: 1180.89 ng/ml



#14 DINOSEB
 R.T.: 11.118 min
 Delta R.T.: -0.045 min
 Response: 1594502647
 Conc: 246.20 ng/ml

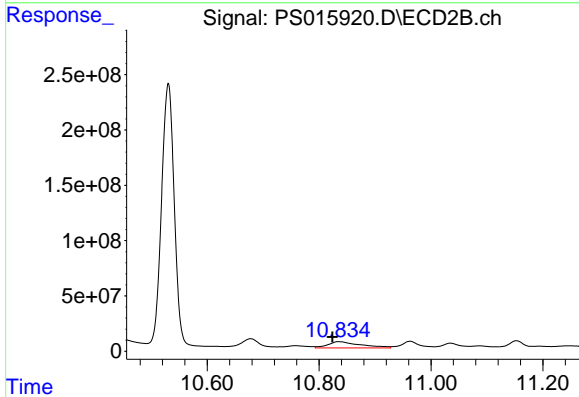


#14 DINOSEB
 R.T.: 9.878 min
 Delta R.T.: 0.030 min
 Response: 442356570
 Conc: 219.63 ng/ml

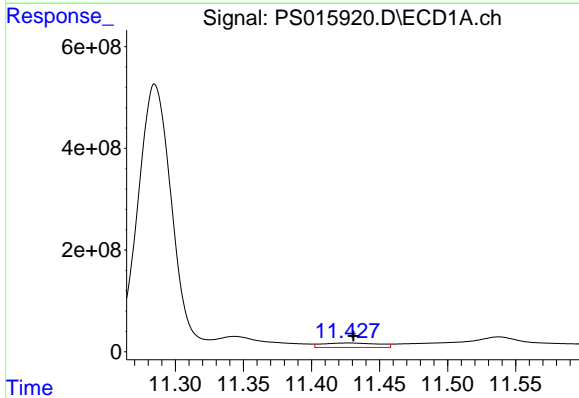


#15 Picloram
 R.T.: 11.023 min
 Delta R.T.: 0.045 min
 Response: 1482695531
 Conc: 108.46 ng/ml

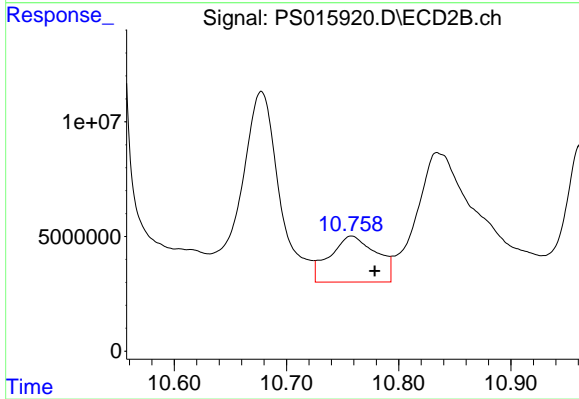
Instrument :
 ECD_S
 ClientSampleId :
 WC_AQUEOUS_DBD



#15 Picloram
 R.T.: 10.835 min
 Delta R.T.: 0.011 min
 Response: 228675332
 Conc: 54.37 ng/ml



#16 DCPA
 R.T.: 11.427 min
 Delta R.T.: -0.003 min
 Response: 249862778
 Conc: 18.89 ng/ml



#16 DCPA
 R.T.: 10.758 min
 Delta R.T.: -0.020 min
 Response: 57672023
 Conc: 13.72 ng/ml