

Data Path : Z:\pestpcbsrv\HPCHEM1\ECD_S\Data\PS062520\
 Data File : PS010936.D
 Signal(s) : Signal #1: ECD1A.ch Signal #2: ECD2B.ch
 Acq On : 25 Jun 2020 18:15
 Operator : DD\AJ
 Sample : PB129751BS
 Misc :
 ALS Vial : 38 Sample Multiplier: 1

Instrument :
 ECD_S
 ClientSampleId :
 PB129751BS

Manual Integrations
 APPROVED

Ankita
 6/26/2020 10:17:02 AM

Integration File signal 1: autoint1.e
 Integration File signal 2: autoint2.e
 Quant Time: Jun 26 01:39:02 2020
 Quant Method : Z:\pestpcbsrv\HPCHEM1\ECD_S\Method\PS062420.M
 Quant Title : 8080.M
 QLast Update : Thu Jun 25 02:45:12 2020
 Response via : Initial Calibration
 Integrator: ChemStation

Volume Inj. : 2 µl
 Signal #1 Phase : Rtx-CLPesticides Signal #2 Phase: Rtx-CLPesticides2
 Signal #1 Info : 30M x 0.32mm x0.5 Signal #2 Info : 30M x 0.32mm x 0.25µm

Compound	RT#1	RT#2	Resp#1	Resp#2	ng/ml	ng/ml

System Monitoring Compounds						
4) S 2,4-DCAA	7.229	6.920	1671.0E6	1060.5E6	1842.707	1914.025
Target Compounds						
1) T Dalapon	3.046	2.635	1784.8E6	1661.1E6	1594.000m	2201.952m#
2) T 3,5-DICHL...	6.441	6.070	2152.5E6	1336.5E6	1711.017	1604.748m
3) T 4-Nitroph...	7.059	6.524	639.8E6	472.1E6	1602.886m	1469.141m
5) T DICAMBA	7.421	7.090	5574.3E6	3299.7E6	1528.745	1452.795
6) T MCPP	7.599	7.197	637.9E6	329.1E6	223.713m	173.864
7) T MCPA	7.750	7.414	706.8E6	576.0E6	177.486	208.692
8) T DICHLORPROP	8.114	7.716	1541.8E6	1005.0E6	1758.145	1711.619
9) T 2,4-D	8.341	8.009	1759.1E6	1343.2E6	1989.248	1858.766
10) T Pentachlo...	8.654	8.440	18210.4E6	9039.1E6	1464.543	1299.903
11) T 2,4,5-TP ...	9.202	8.800	8363.0E6	4702.4E6	1684.289	1562.817
12) T 2,4,5-T	9.487	9.179	7729.7E6	4618.8E6	1659.476	1551.058
13) T 2,4-DB	10.040	9.685	1006.4E6	715.7E6	1693.400	1741.424
14) T DINOSEB	11.202	10.019	5745.1E6	3324.6E6	1604.125	1596.716
15) T Picloram	11.019	11.000	8528.0E6	5326.9E6	1521.193	1271.471
16) T DCPA	11.469	10.948	9143.5E6	5526.1E6	1495.629	1483.746

(f)=RT Delta > 1/2 Window (#)=Amounts differ by > 25% (m)=manual int.

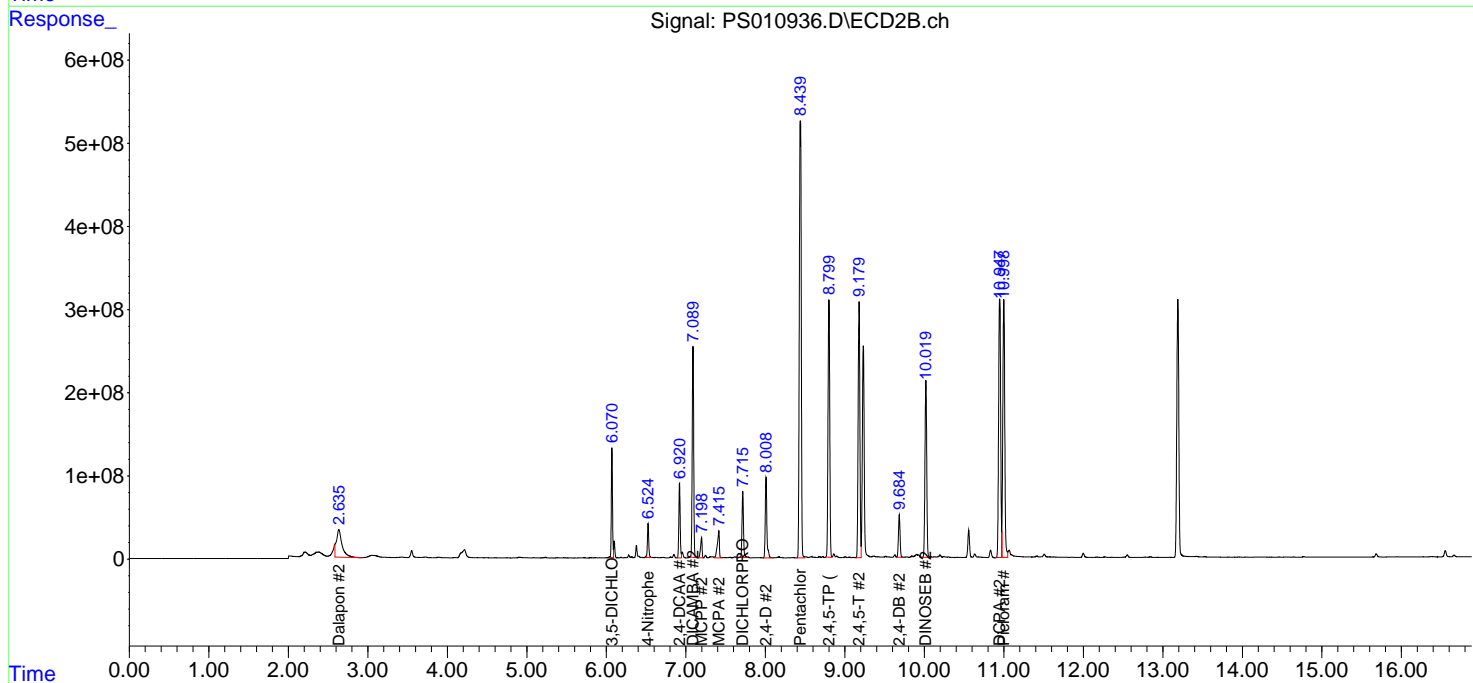
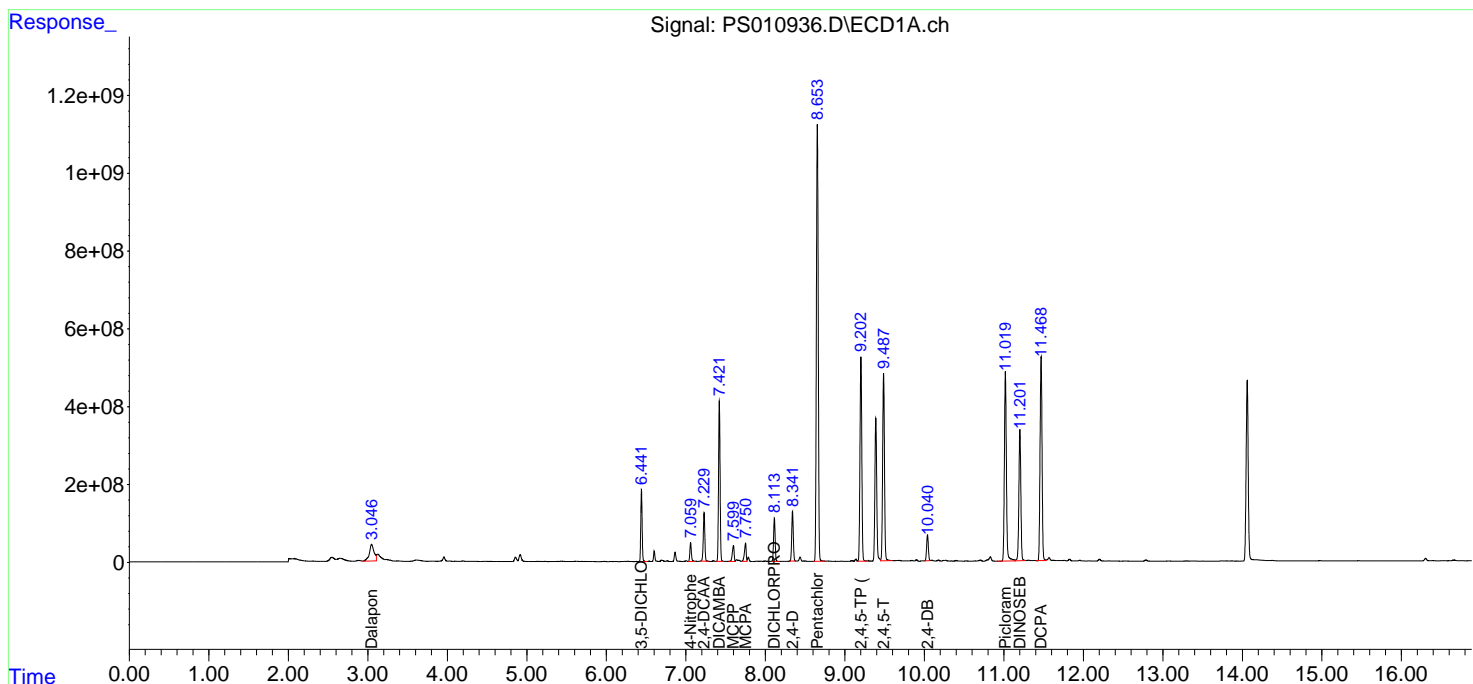
Data Path : Z:\pestpcbsrv\HPCHEM1\ECD_S\Data\PS062520\
 Data File : PS010936.D
 Signal(s) : Signal #1: ECD1A.ch Signal #2: ECD2B.ch
 Acq On : 25 Jun 2020 18:15
 Operator : DD\AJ
 Sample : PB129751BS
 Misc :
 ALS Vial : 38 Sample Multiplier: 1

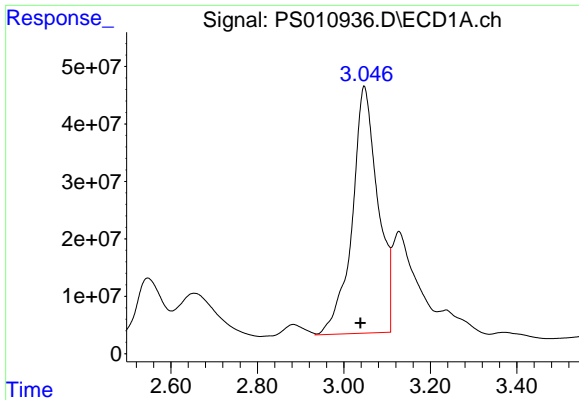
Instrument :
 ECD_S
 Client Sampled :
 PB129751BS

Manual Integrations
APPROVED
 Ankita
 6/26/2020 10:17:02 AM

Integration File signal 1: autoint1.e
 Integration File signal 2: autoint2.e
 Quant Time: Jun 26 01:39:02 2020
 Quant Method : Z:\pestpcbsrv\HPCHEM1\ECD_S\Method\PS062420.M
 Quant Title : 8080.M
 QLast Update : Thu Jun 25 02:45:12 2020
 Response via : Initial Calibration
 Integrator: ChemStation

Volume Inj. : 2 µl
 Signal #1 Phase : Rtx-CLPesticides Signal #2 Phase: Rtx-CLPesticides2
 Signal #1 Info : 30M x 0.32mm x0.5 Signal #2 Info : 30M x 0.32mm x 0.25µm

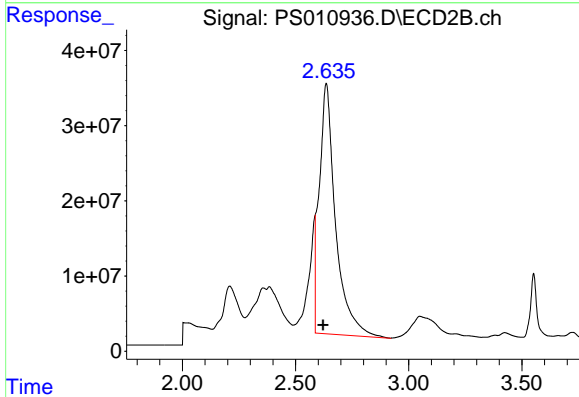




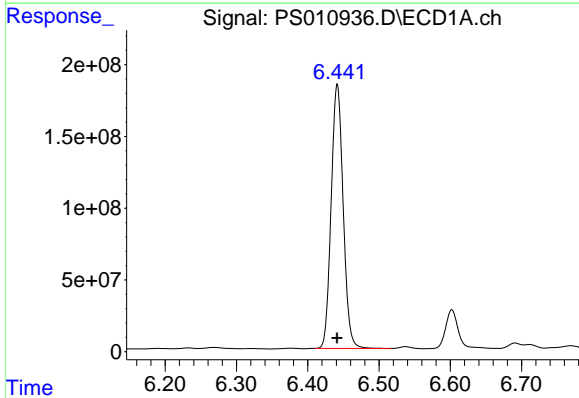
#1 Dalapon
 R.T.: 3.046 min
 Delta R.T.: 0.008 min
 Response: 1784838204
 Conc: 1594.00 ng/ml m

Instrument :
 ECD_S
 ClientSampled :
 PB129751BS

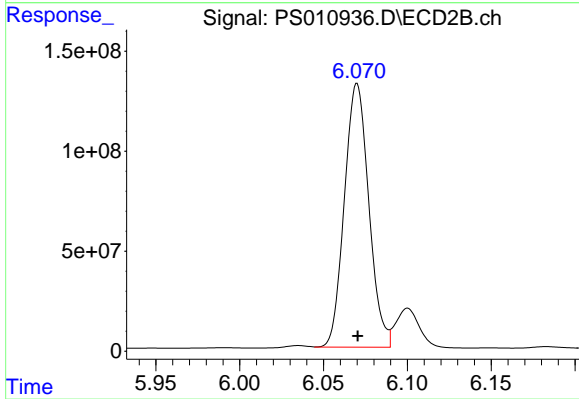
Manual Integrations
 APPROVED
 Ankita
 6/26/2020 10:17:02 AM



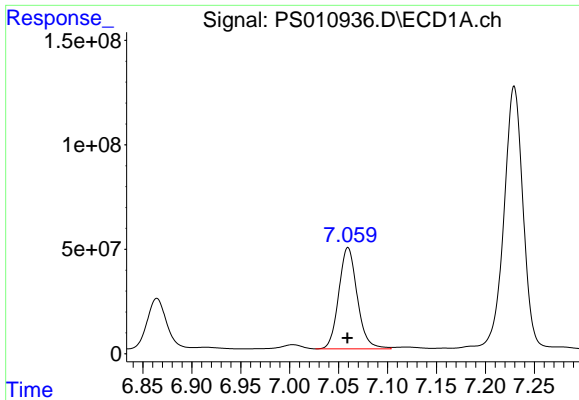
#1 Dalapon
 R.T.: 2.635 min
 Delta R.T.: 0.013 min
 Response: 1661066596
 Conc: 2201.95 ng/ml m



#2 3,5-DICHLOROBENZOIC ACID
 R.T.: 6.441 min
 Delta R.T.: 0.000 min
 Response: 2152542972
 Conc: 1711.02 ng/ml



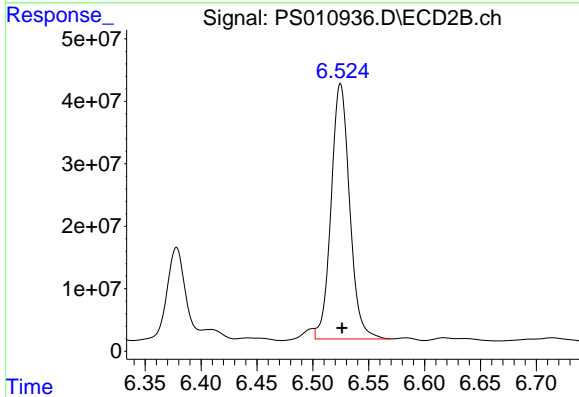
#2 3,5-DICHLOROBENZOIC ACID
 R.T.: 6.070 min
 Delta R.T.: 0.000 min
 Response: 1336473747
 Conc: 1604.75 ng/ml m



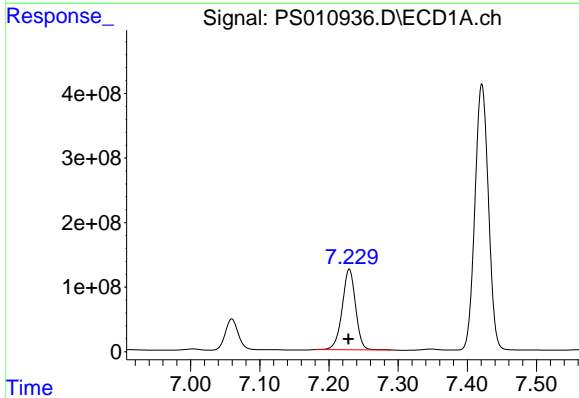
#3 4-Nitrophenol
 R.T.: 7.059 min
 Delta R.T.: 0.000 min
 Response: 639835599
 Conc: 1602.89 ng/ml m

Instrument :
 ECD_S
ClientSampled :
 PB129751BS

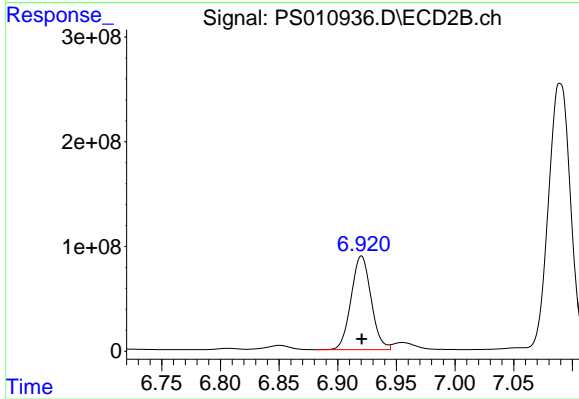
Manual Integrations
APPROVED
 Ankita
 6/26/2020 10:17:02 AM



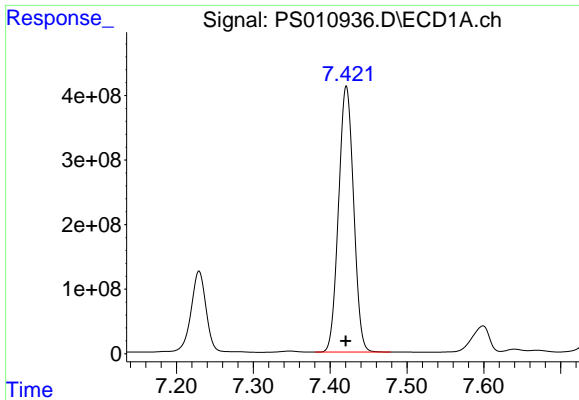
#3 4-Nitrophenol
 R.T.: 6.524 min
 Delta R.T.: -0.002 min
 Response: 472085160
 Conc: 1469.14 ng/ml m



#4 2,4-DCAA
 R.T.: 7.229 min
 Delta R.T.: 0.001 min
 Response: 1671000963
 Conc: 1842.71 ng/ml



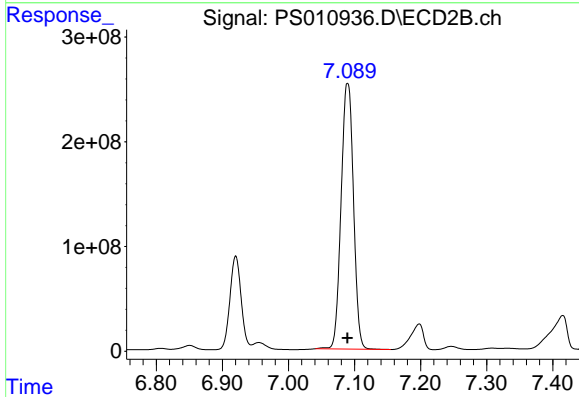
#4 2,4-DCAA
 R.T.: 6.920 min
 Delta R.T.: 0.000 min
 Response: 1060515607
 Conc: 1914.02 ng/ml



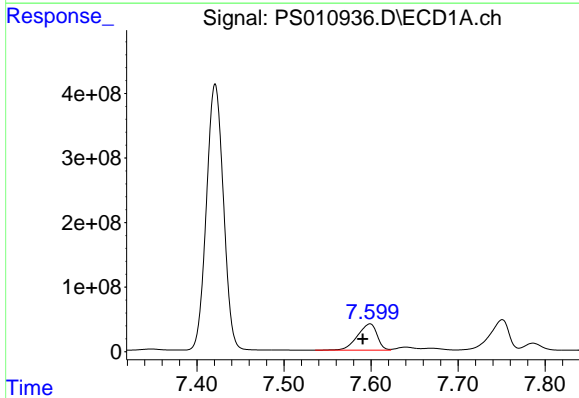
#5 DICAMBA
 R.T.: 7.421 min
 Delta R.T.: 0.000 min
 Response: 5574299266
 Conc: 1528.74 ng/ml

Instrument :
 ECD_S
ClientSampled :
 PB129751BS

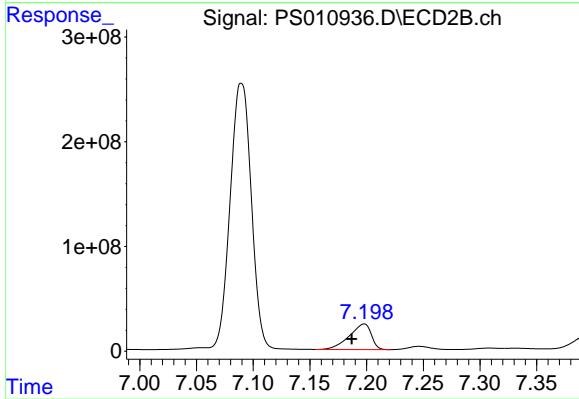
Manual Integrations
APPROVED
 Ankita
 6/26/2020 10:17:02 AM



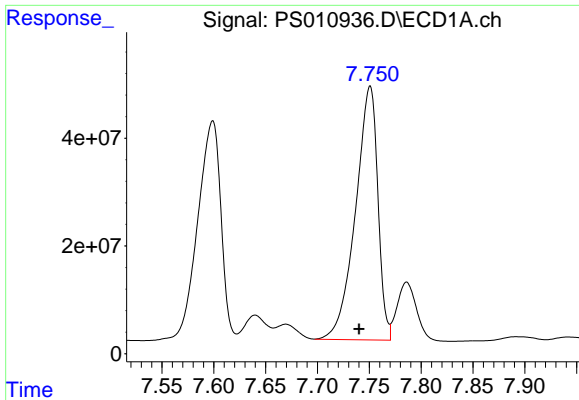
#5 DICAMBA
 R.T.: 7.090 min
 Delta R.T.: 0.000 min
 Response: 3299711561
 Conc: 1452.79 ng/ml



#6 MCPP
 R.T.: 7.599 min
 Delta R.T.: 0.008 min
 Response: 637919489
 Conc: 223.71 ug/ml m



#6 MCPP
 R.T.: 7.197 min
 Delta R.T.: 0.010 min
 Response: 329088758
 Conc: 173.86 ug/ml



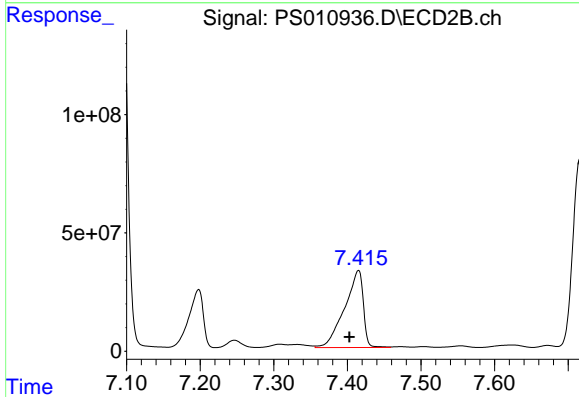
#7 MCPA

R.T.: 7.750 min
 Delta R.T.: 0.010 min
 Response: 706828082
 Conc: 177.49 ug/ml

Instrument :
 ECD_S
 ClientSampled :
 PB129751BS

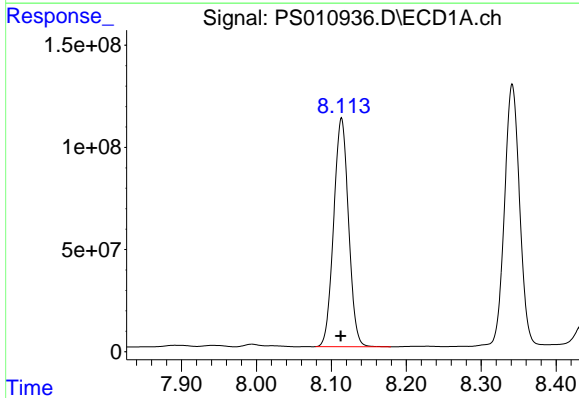
Manual Integrations
 APPROVED

Ankita
 6/26/2020 10:17:02 AM



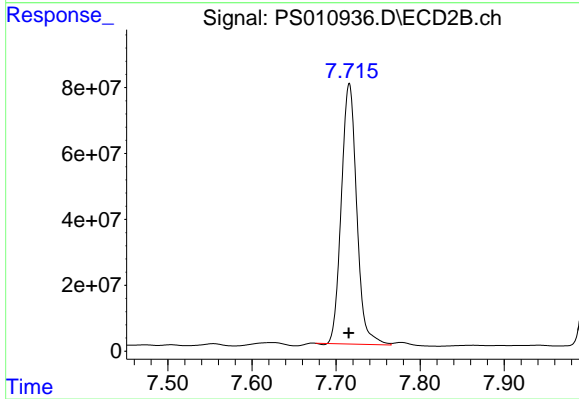
#7 MCPA

R.T.: 7.414 min
 Delta R.T.: 0.012 min
 Response: 575986936
 Conc: 208.69 ug/ml



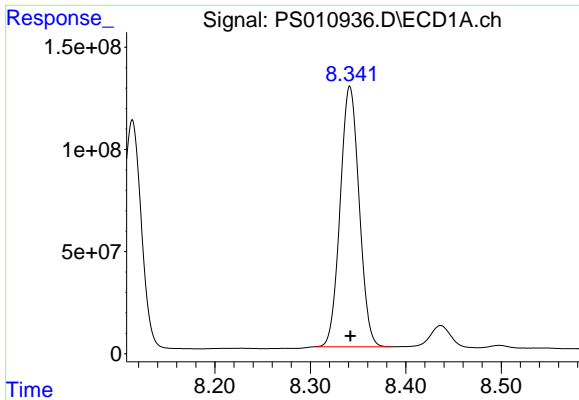
#8 DICHLORPROP

R.T.: 8.114 min
 Delta R.T.: 0.000 min
 Response: 1541766103
 Conc: 1758.15 ng/ml



#8 DICHLORPROP

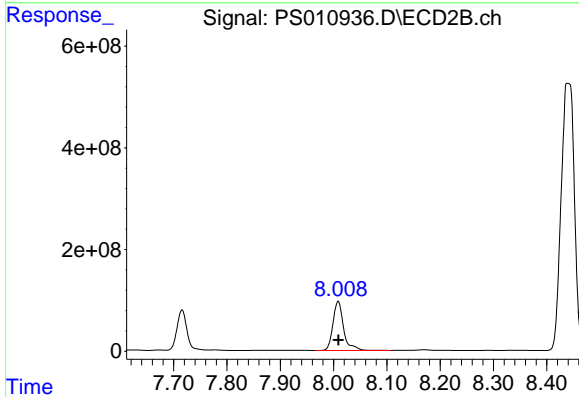
R.T.: 7.716 min
 Delta R.T.: 0.000 min
 Response: 1004950662
 Conc: 1711.62 ng/ml



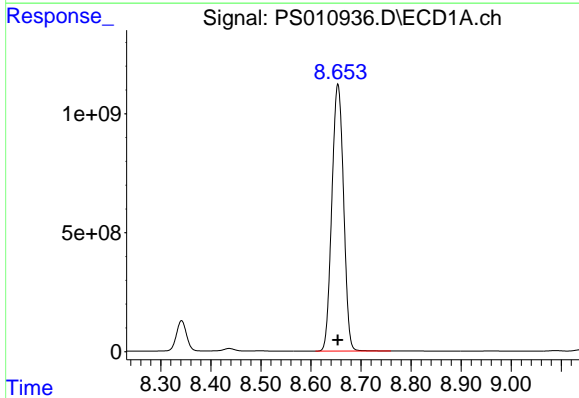
#9 2,4-D
 R.T.: 8.341 min
 Delta R.T.: 0.000 min
 Response: 1759084897
 Conc: 1989.25 ng/ml

Instrument :
 ECD_S
ClientSampled :
 PB129751BS

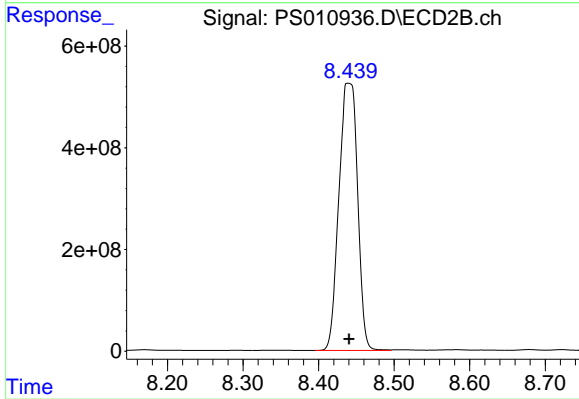
Manual Integrations
APPROVED
 Ankita
 6/26/2020 10:17:02 AM



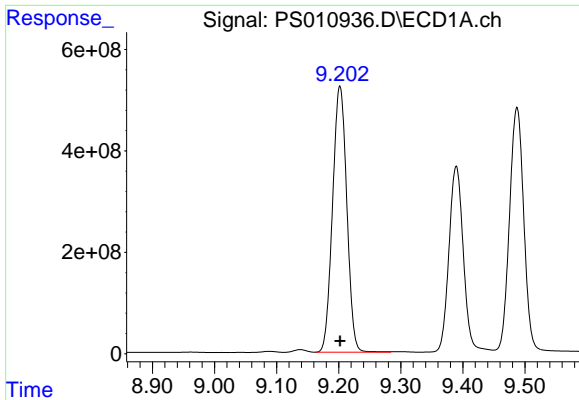
#9 2,4-D
 R.T.: 8.009 min
 Delta R.T.: 0.000 min
 Response: 1343244170
 Conc: 1858.77 ng/ml



#10 Pentachlorophenol
 R.T.: 8.654 min
 Delta R.T.: 0.000 min
 Response: 18210362620
 Conc: 1464.54 ng/ml



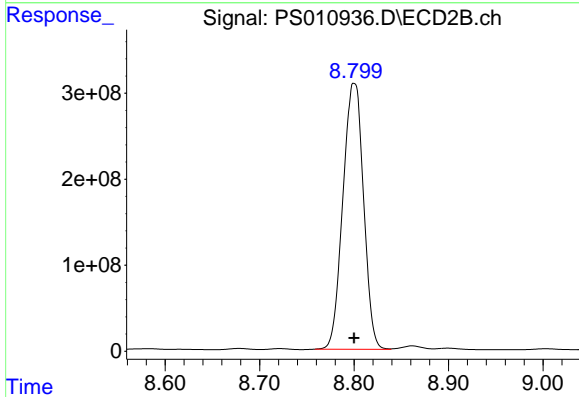
#10 Pentachlorophenol
 R.T.: 8.440 min
 Delta R.T.: 0.000 min
 Response: 9039120912
 Conc: 1299.90 ng/ml



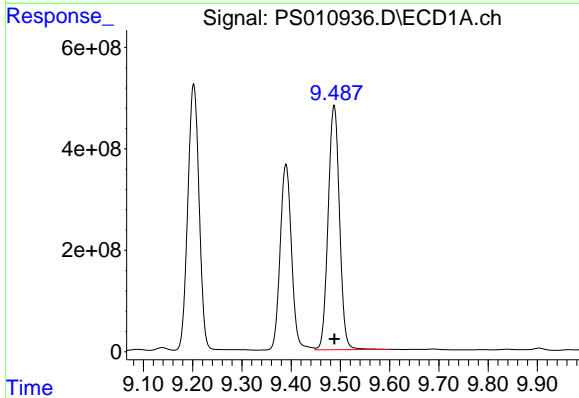
#11 2,4,5-TP (SILVEX)
 R.T.: 9.202 min
 Delta R.T.: 0.000 min
 Response: 8363044092
 Conc: 1684.29 ng/ml

Instrument :
 ECD_S
ClientSampled :
 PB129751BS

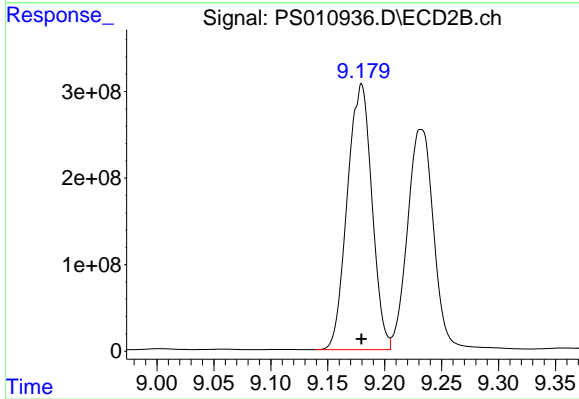
Manual Integrations
APPROVED
 Ankita
 6/26/2020 10:17:02 AM



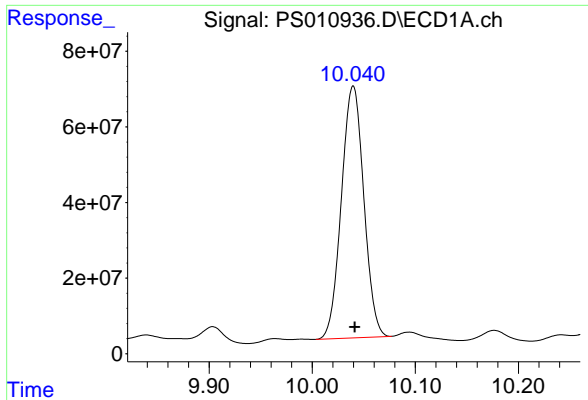
#11 2,4,5-TP (SILVEX)
 R.T.: 8.800 min
 Delta R.T.: 0.000 min
 Response: 4702352665
 Conc: 1562.82 ng/ml



#12 2,4,5-T
 R.T.: 9.487 min
 Delta R.T.: 0.000 min
 Response: 7729726630
 Conc: 1659.48 ng/ml



#12 2,4,5-T
 R.T.: 9.179 min
 Delta R.T.: 0.000 min
 Response: 4618834252
 Conc: 1551.06 ng/ml

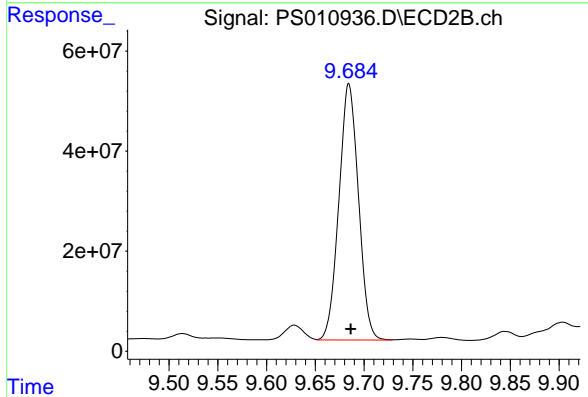


#13 2,4-DB
 R.T.: 10.040 min
 Delta R.T.: -0.002 min
 Response: 1006443730
 Conc: 1693.40 ng/ml

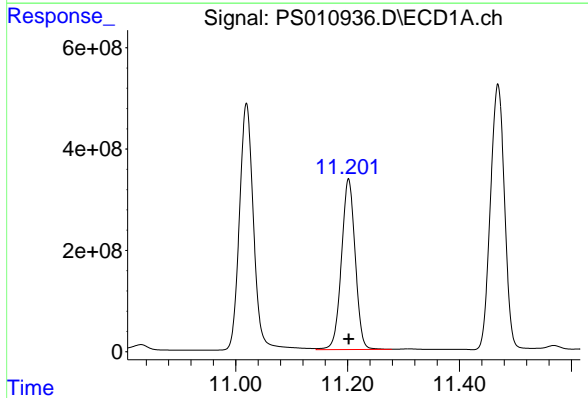
Instrument :
 ECD_S
 ClientSampled :
 PB129751BS

Manual Integrations
 APPROVED

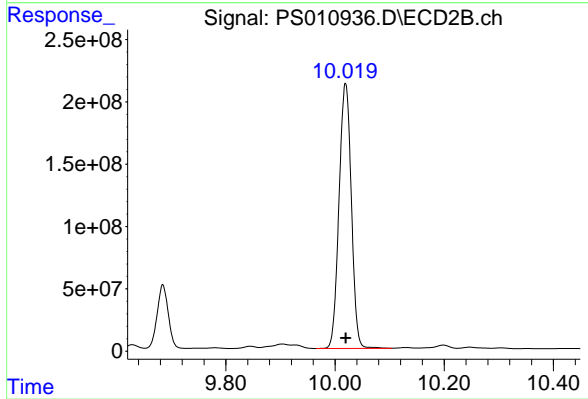
Ankita
 6/26/2020 10:17:02 AM



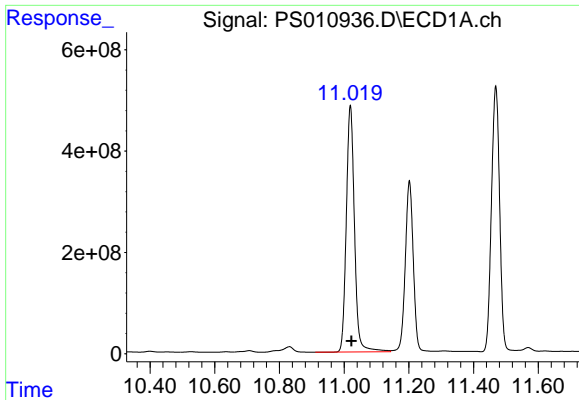
#13 2,4-DB
 R.T.: 9.685 min
 Delta R.T.: -0.002 min
 Response: 715703417
 Conc: 1741.42 ng/ml



#14 DINOSEB
 R.T.: 11.202 min
 Delta R.T.: 0.000 min
 Response: 5745114442
 Conc: 1604.13 ng/ml



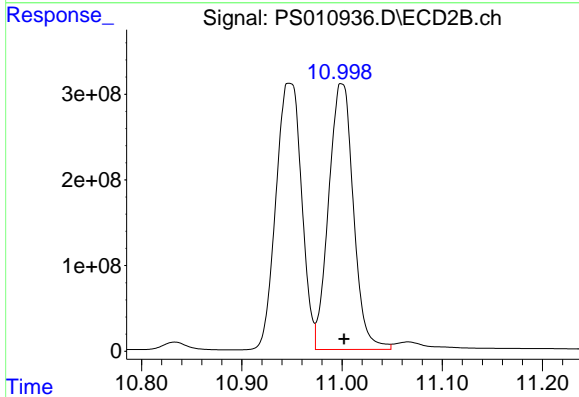
#14 DINOSEB
 R.T.: 10.019 min
 Delta R.T.: 0.000 min
 Response: 3324578588
 Conc: 1596.72 ng/ml



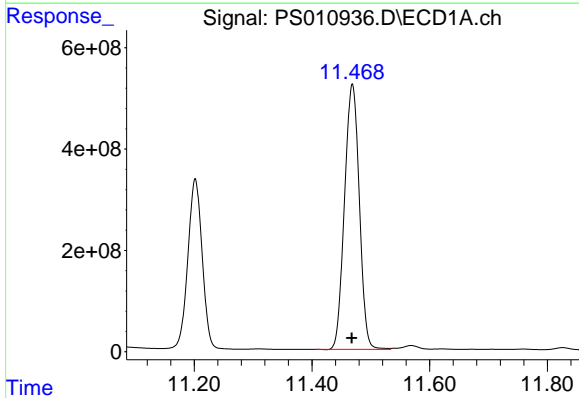
#15 Picloram
 R.T.: 11.019 min
 Delta R.T.: -0.003 min
 Response: 8528018908
 Conc: 1521.19 ng/ml

Instrument :
 ECD_S
ClientSampled :
 PB129751BS

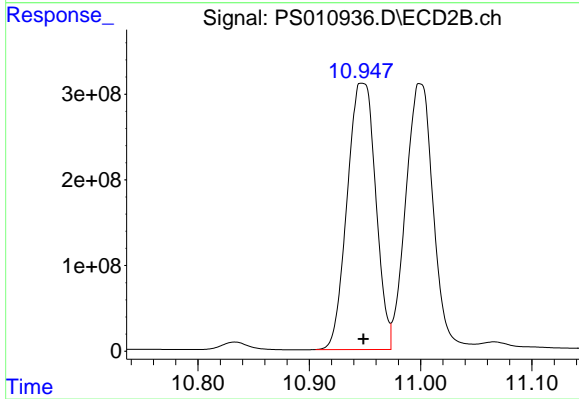
Manual Integrations
APPROVED
 Ankita
 6/26/2020 10:17:02 AM



#15 Picloram
 R.T.: 11.000 min
 Delta R.T.: -0.002 min
 Response: 5326904581
 Conc: 1271.47 ng/ml



#16 DCPA
 R.T.: 11.469 min
 Delta R.T.: 0.000 min
 Response: 9143475485
 Conc: 1495.63 ng/ml



#16 DCPA
 R.T.: 10.948 min
 Delta R.T.: 0.000 min
 Response: 5526056984
 Conc: 1483.75 ng/ml