

Data Path : Z:\pestpcbsrv\HPCHEM1\ECD\_S\Data\PS062523\  
 Data File : PS023401.D  
 Signal(s) : Signal #1: ECD1A.ch Signal #2: ECD2B.ch  
 Acq On : 25 Jun 2023 14:02  
 Operator : AR\AJ  
 Sample : 03321-01  
 Misc :  
 ALS Vial : 6 Sample Multiplier: 1

Instrument :  
 ECD\_S  
 ClientSampleId :  
 WC-25

Integration File signal 1: autoint1.e  
 Integration File signal 2: autoint2.e  
 Quant Time: Jun 26 01:17:50 2023  
 Quant Method : Z:\pestpcbsrv\HPCHEM1\ECD\_S\Method\PS060623.M  
 Quant Title : 8080.M  
 QLast Update : Tue Jun 06 13:00:04 2023  
 Response via : Initial Calibration  
 Integrator: ChemStation

Volume Inj. : 2 µl  
 Signal #1 Phase : Rtx-CLPesticides Signal #2 Phase: Rtx-CLPesticides2  
 Signal #1 Info : 30M x 0.32mm x0.5 Signal #2 Info : 30M x 0.32mm x 0.25µm

	Compound	RT#1	RT#2	Resp#1	Resp#2	ng/ml	ng/ml
-----							
System Monitoring Compounds							
4) S	2,4-DCAA	6.478	6.852	570.8E6	142.6E6	322.604	251.226
Target Compounds							
1) T	Dalapon	2.513	0.000	63565515	0	34.763	N.D. #
2) T	3,5-DICHL...	5.826	6.035	921683	647400	<MDL	<MDL #
3) T	4-Nitroph...	6.288	6.494	78938419	8578690	61.248	25.146 #
5) T	DICAMBA	6.653	7.053	-873756	949979	N.D.	<MDL
6) T	MCP P	6.808	7.104	36917145	5391141	6.698	3.016 #
7) T	MCPA	6.898	7.322	20985022	17835590	2.680	6.636 #
8) T	DICHLORPROP	7.217	7.655	12756657	12739817	6.182	20.595 #
9) T	2,4-D	7.439	7.927	6017076	3293387	2.463	4.749 #
10) T	Pentachlo...	7.668	8.354	9029263	4045778	<MDL	<MDL #
11) T	2,4,5-TP ...	8.205	8.717	13643585	1723702	1.180	<MDL #
12) T	2,4,5-T	8.484	9.071	57174928	13415392	5.033	4.376
13) T	2,4-DB	8.996	9.601	104.6E6	5565136	44.444	15.008 #
14) T	DINOSEB	10.079	9.913	2971064	13955480	<MDL	5.881 #
15) T	Picloram	9.877	10.890	370.8E6	89255008	21.363	19.557
16) T	DCPA	10.325	10.890	34182914	89255008	2.452	22.248 #
-----							

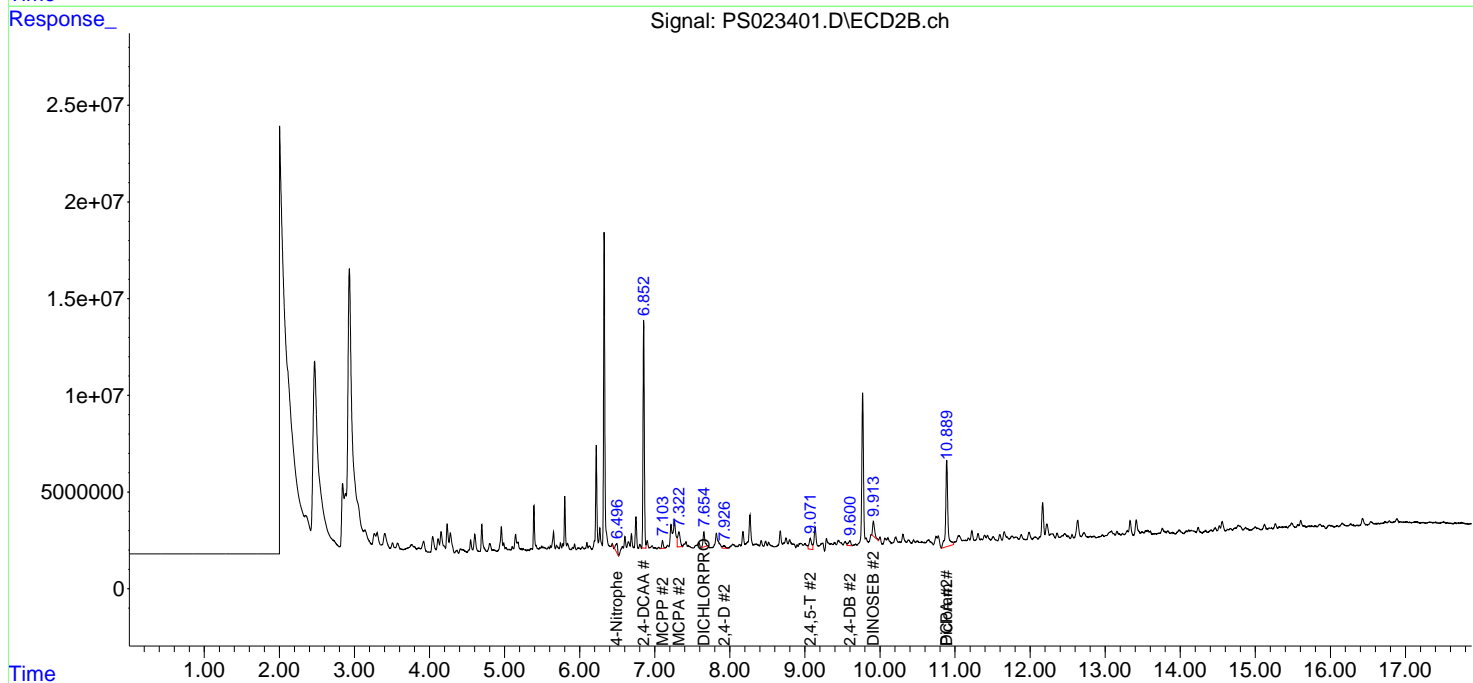
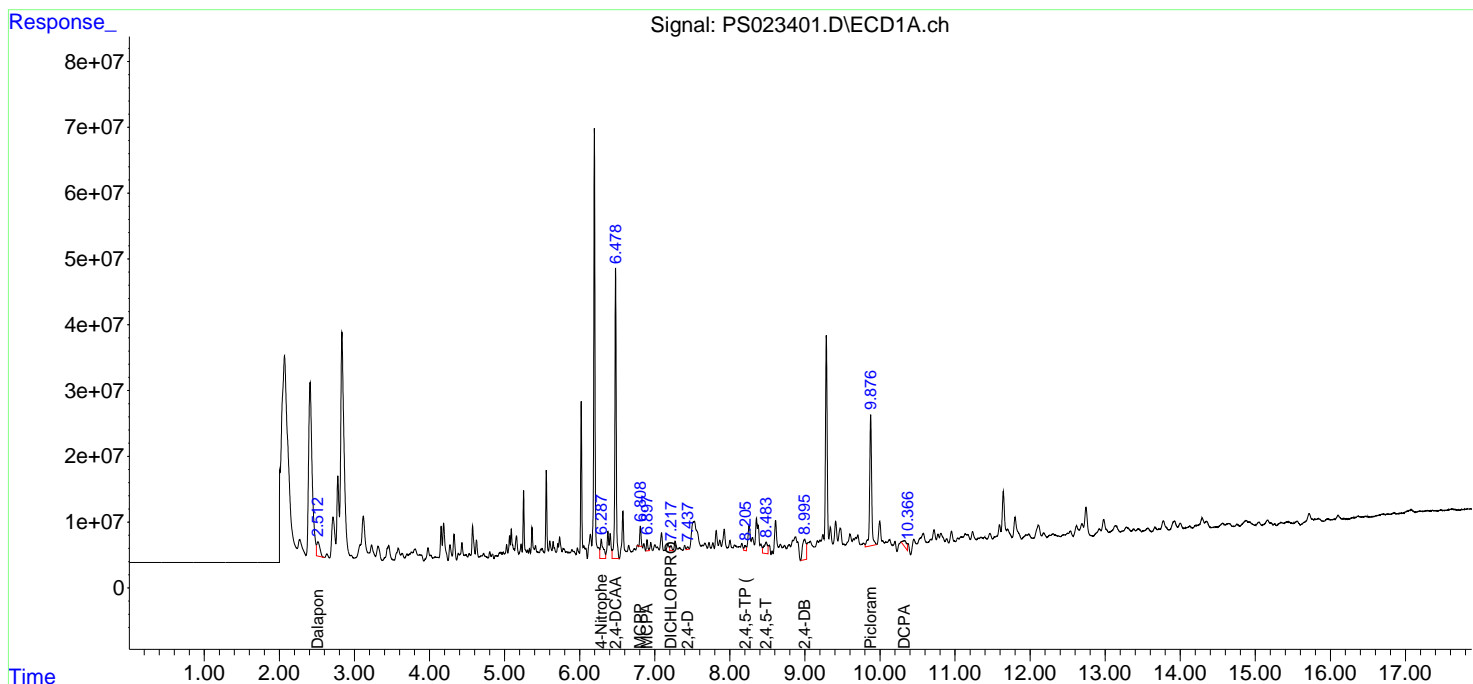
(f)=RT Delta > 1/2 Window (#)=Amounts differ by > 25% (m)=manual int.

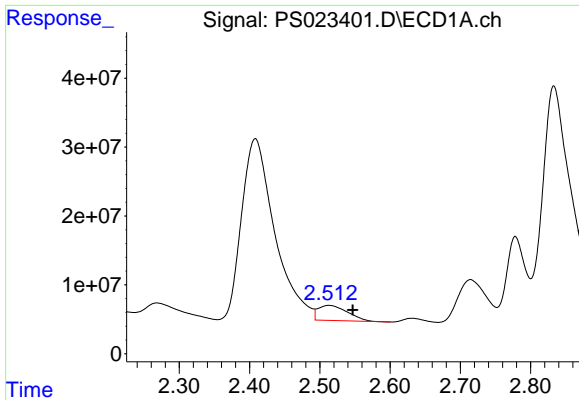
Data Path : Z:\pestpcbsrv\HPCHEM1\ECD\_S\Data\PS062523\  
 Data File : PS023401.D  
 Signal(s) : Signal #1: ECD1A.ch Signal #2: ECD2B.ch  
 Acq On : 25 Jun 2023 14:02  
 Operator : AR\AJ  
 Sample : 03321-01  
 Misc :  
 ALS Vial : 6 Sample Multiplier: 1

Instrument :  
 ECD\_S  
 ClientSampleId :  
 WC-25

Integration File signal 1: autoint1.e  
 Integration File signal 2: autoint2.e  
 Quant Time: Jun 26 01:17:50 2023  
 Quant Method : Z:\pestpcbsrv\HPCHEM1\ECD\_S\Method\PS060623.M  
 Quant Title : 8080.M  
 QLast Update : Tue Jun 06 13:00:04 2023  
 Response via : Initial Calibration  
 Integrator: ChemStation

Volume Inj. : 2 µl  
 Signal #1 Phase : Rtx-CLPesticides Signal #2 Phase: Rtx-CLPesticides2  
 Signal #1 Info : 30M x 0.32mm x0.5 Signal #2 Info : 30M x 0.32mm x 0.25µm

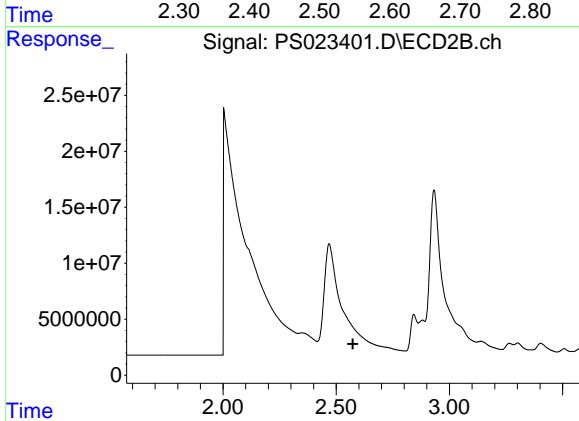




#1 Dalapon

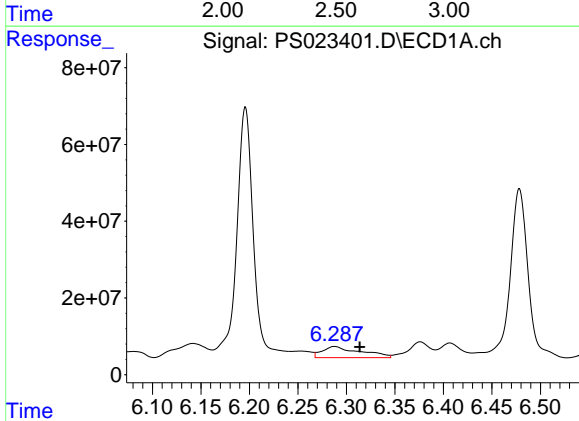
R.T.: 2.513 min  
 Delta R.T.: -0.034 min  
 Response: 63565515  
 Conc: 34.76 ng/ml

Instrument :  
 ECD\_S  
 ClientSampleId :  
 WC-25



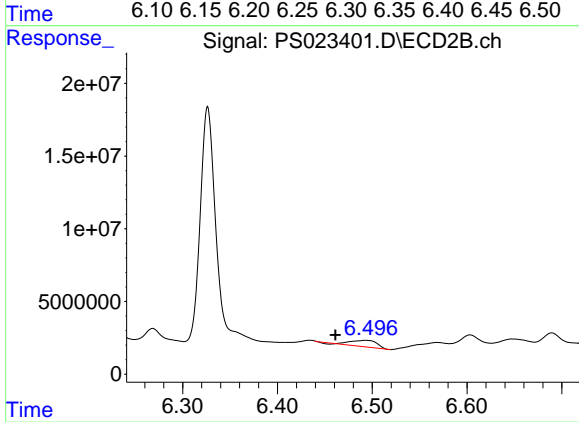
#1 Dalapon

R.T.: 0.000 min  
 Exp R.T. : 2.574 min  
 Response: 0  
 Conc: N.D.



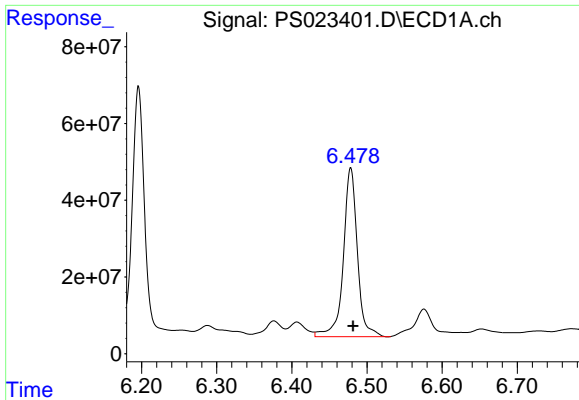
#3 4-Nitrophenol

R.T.: 6.288 min  
 Delta R.T.: -0.026 min  
 Response: 78938419  
 Conc: 61.25 ng/ml



#3 4-Nitrophenol

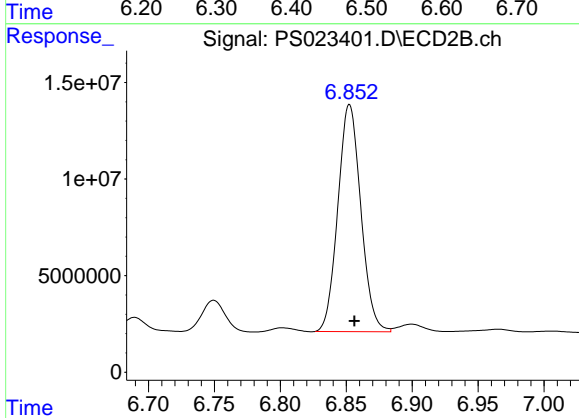
R.T.: 6.494 min  
 Delta R.T.: 0.032 min  
 Response: 8578690  
 Conc: 25.15 ng/ml



#4 2,4-DCAA

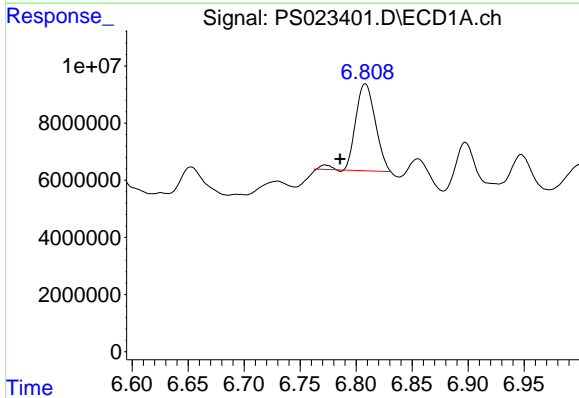
R.T.: 6.478 min  
Delta R.T.: -0.003 min  
Response: 570769690  
Conc: 322.60 ng/ml

Instrument :  
ECD\_S  
ClientSampleId :  
WC-25



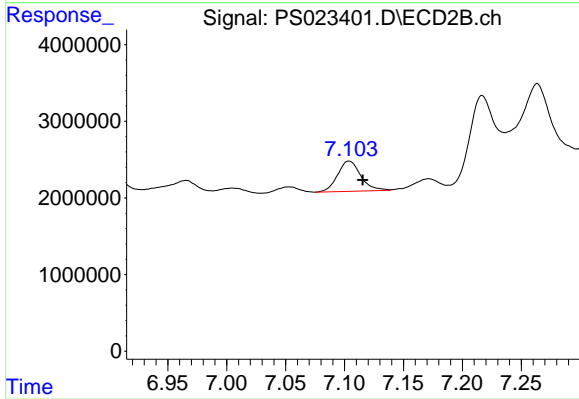
#4 2,4-DCAA

R.T.: 6.852 min  
Delta R.T.: -0.004 min  
Response: 142619901  
Conc: 251.23 ng/ml



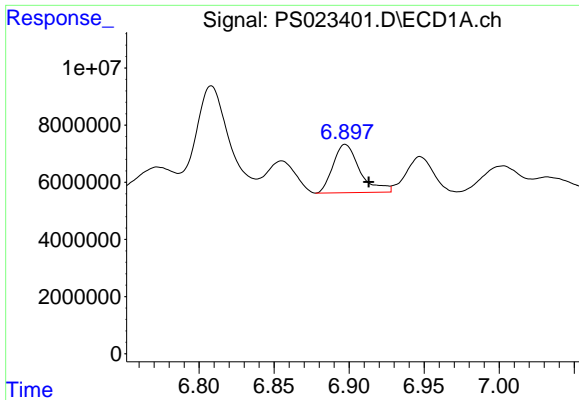
#6 MCP

R.T.: 6.808 min  
Delta R.T.: 0.023 min  
Response: 36917145  
Conc: 6.70 ug/ml



#6 MCP

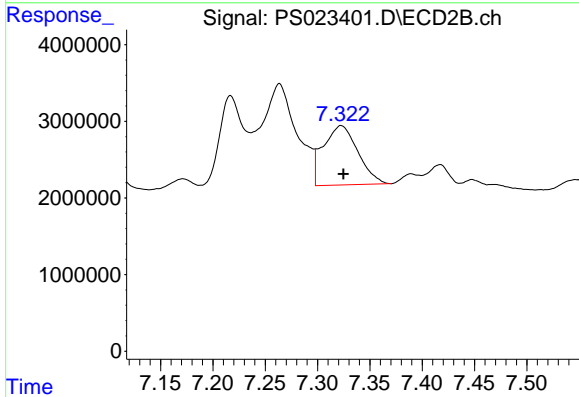
R.T.: 7.104 min  
Delta R.T.: -0.011 min  
Response: 5391141  
Conc: 3.02 ug/ml



#7 MCPA

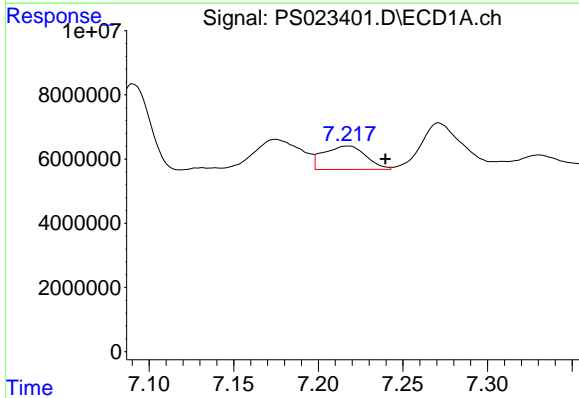
R.T.: 6.898 min  
 Delta R.T.: -0.016 min  
 Response: 20985022  
 Conc: 2.68 ug/ml

Instrument :  
 ECD\_S  
 ClientSampleId :  
 WC-25



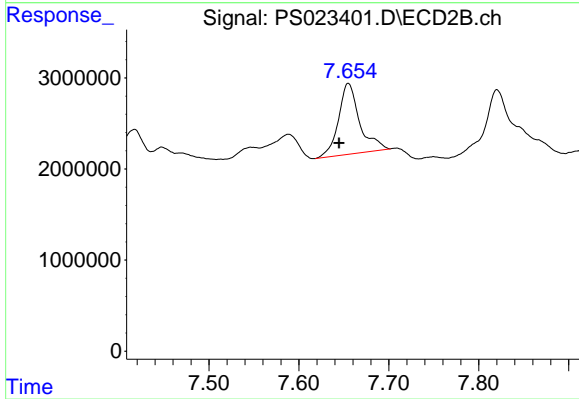
#7 MCPA

R.T.: 7.322 min  
 Delta R.T.: -0.002 min  
 Response: 17835590  
 Conc: 6.64 ug/ml



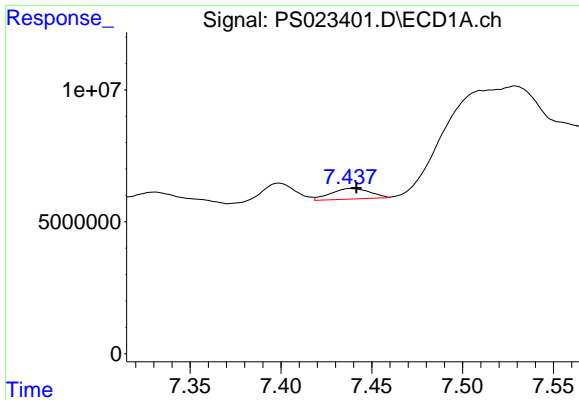
#8 DICHLORPROP

R.T.: 7.217 min  
 Delta R.T.: -0.023 min  
 Response: 12756657  
 Conc: 6.18 ng/ml



#8 DICHLORPROP

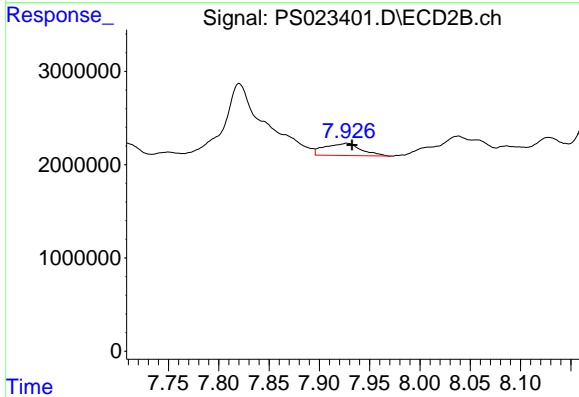
R.T.: 7.655 min  
 Delta R.T.: 0.010 min  
 Response: 12739817  
 Conc: 20.60 ng/ml



#9 2,4-D

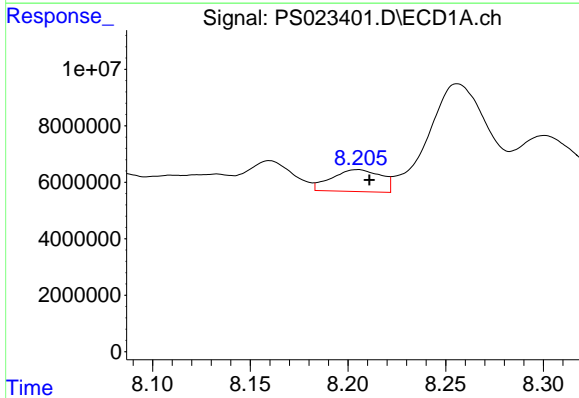
R.T.: 7.439 min  
 Delta R.T.: -0.003 min  
 Response: 6017076  
 Conc: 2.46 ng/ml

Instrument :  
 ECD\_S  
 ClientSampleId :  
 WC-25



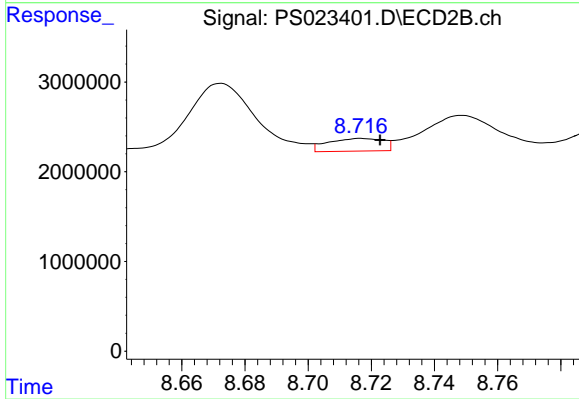
#9 2,4-D

R.T.: 7.927 min  
 Delta R.T.: -0.005 min  
 Response: 3293387  
 Conc: 4.75 ng/ml



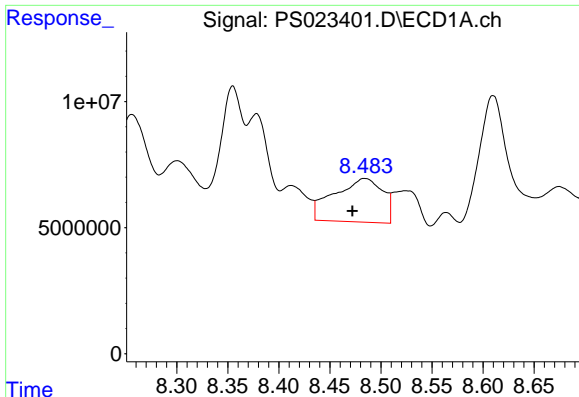
#11 2,4,5-TP (SILVEX)

R.T.: 8.205 min  
 Delta R.T.: -0.006 min  
 Response: 13643585  
 Conc: 1.18 ng/ml



#11 2,4,5-TP (SILVEX)

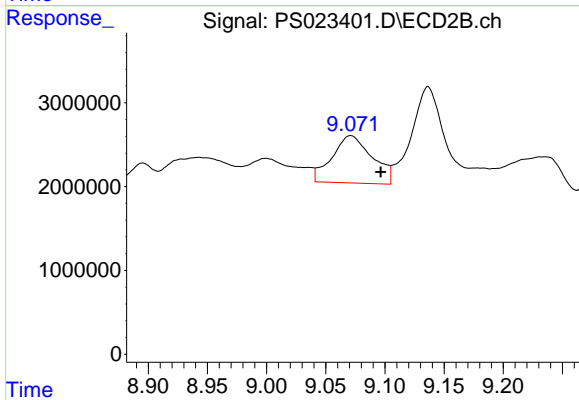
R.T.: 8.717 min  
 Delta R.T.: -0.006 min  
 Response: 1723702  
 Conc: N.D.



#12 2,4,5-T

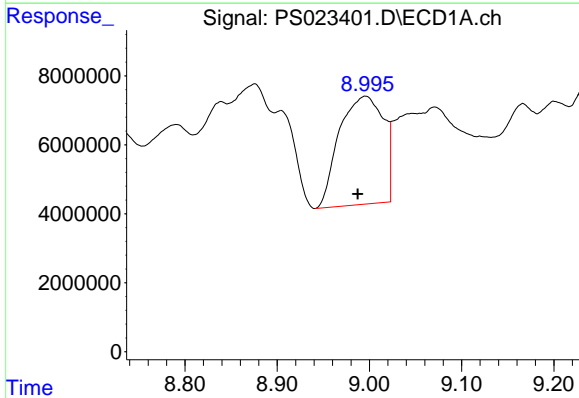
R.T.: 8.484 min  
 Delta R.T.: 0.012 min  
 Response: 57174928  
 Conc: 5.03 ng/ml

Instrument :  
 ECD\_S  
 ClientSampleId :  
 WC-25



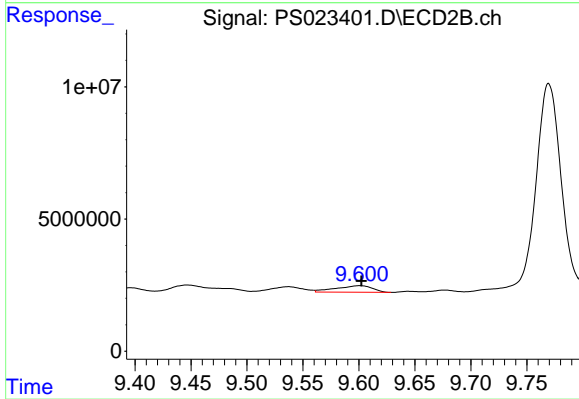
#12 2,4,5-T

R.T.: 9.071 min  
 Delta R.T.: -0.025 min  
 Response: 13415392  
 Conc: 4.38 ng/ml



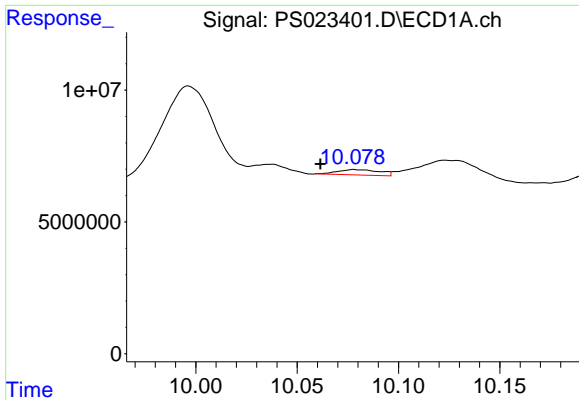
#13 2,4-DB

R.T.: 8.996 min  
 Delta R.T.: 0.008 min  
 Response: 104625167  
 Conc: 44.44 ng/ml



#13 2,4-DB

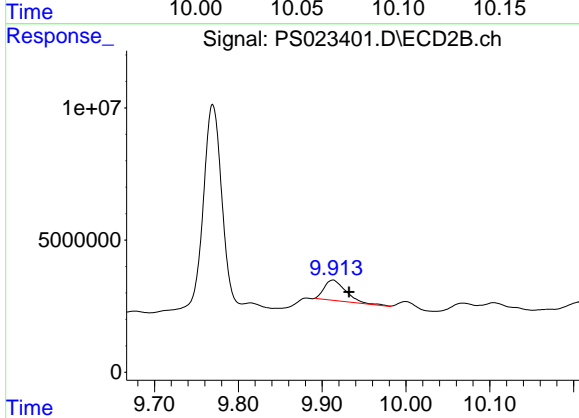
R.T.: 9.601 min  
 Delta R.T.: -0.002 min  
 Response: 5565136  
 Conc: 15.01 ng/ml



#14 DINOSEB

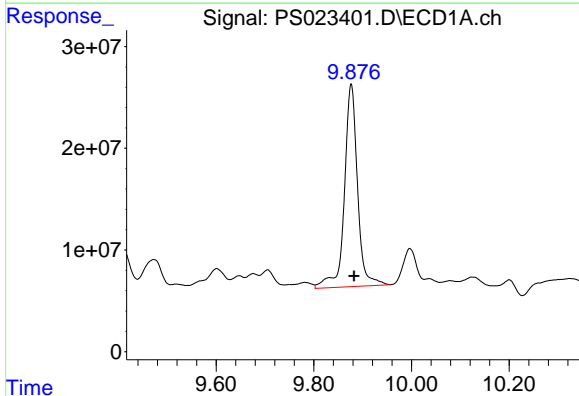
R.T.: 10.079 min  
 Delta R.T.: 0.018 min  
 Response: 2971064  
 Conc: N.D.

Instrument :  
 ECD\_S  
 ClientSampleId :  
 WC-25



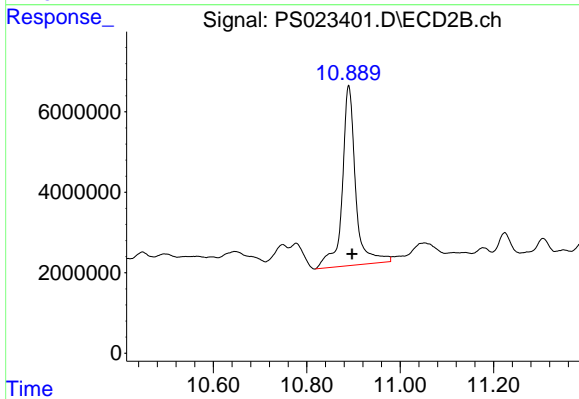
#14 DINOSEB

R.T.: 9.913 min  
 Delta R.T.: -0.019 min  
 Response: 13955480  
 Conc: 5.88 ng/ml



#15 Picloram

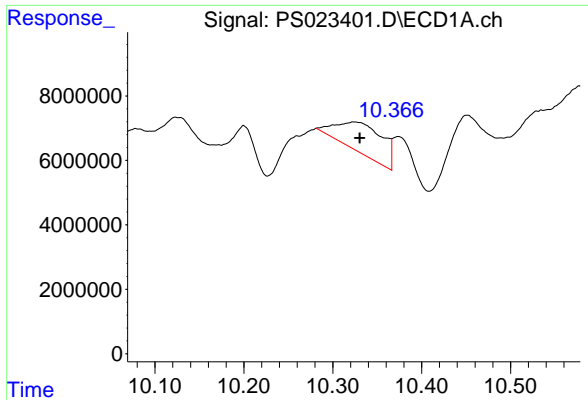
R.T.: 9.877 min  
 Delta R.T.: -0.006 min  
 Response: 370750441  
 Conc: 21.36 ng/ml



#15 Picloram

R.T.: 10.890 min  
 Delta R.T.: -0.008 min  
 Response: 89255008  
 Conc: 19.56 ng/ml

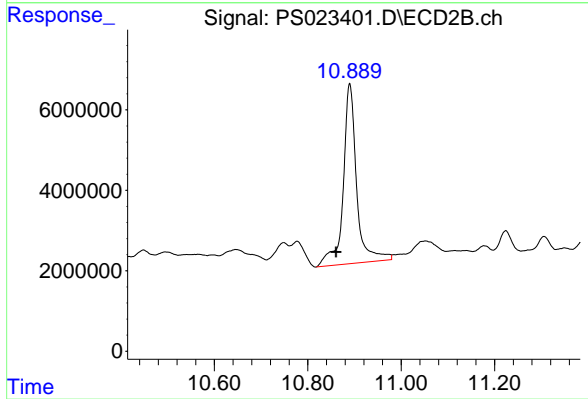




#16 DCPA

R.T.: 10.325 min  
 Delta R.T.: -0.006 min  
 Response: 34182914  
 Conc: 2.45 ng/ml

Instrument :  
 ECD\_S  
 ClientSampleId :  
 WC-25



#16 DCPA

R.T.: 10.890 min  
 Delta R.T.: 0.029 min  
 Response: 89255008  
 Conc: 22.25 ng/ml