

Data Path : Z:\pestpcbsrv\HPCHEM1\ECD_S\Data\PS062523\
 Data File : PS023421.D
 Signal(s) : Signal #1: ECD1A.ch Signal #2: ECD2B.ch
 Acq On : 25 Jun 2023 23:45
 Operator : AR\AJ
 Sample : I.BLK
 Misc :
 ALS Vial : 2 Sample Multiplier: 1

Instrument :
 ECD_S
 ClientSampleId :
 I.BLK

Integration File signal 1: autoint1.e
 Integration File signal 2: autoint2.e
 Quant Time: Jun 26 01:26:01 2023
 Quant Method : Z:\pestpcbsrv\HPCHEM1\ECD_S\Method\PS060623.M
 Quant Title : 8080.M
 QLast Update : Tue Jun 06 13:00:04 2023
 Response via : Initial Calibration
 Integrator: ChemStation

Volume Inj. : 2 µl
 Signal #1 Phase : Rtx-CLPesticides Signal #2 Phase: Rtx-CLPesticides2
 Signal #1 Info : 30M x 0.32mm x0.5 Signal #2 Info : 30M x 0.32mm x 0.25µm

| Compound | RT#1 | RT#2 | Resp#1 | Resp#2 | ng/ml | ng/ml |
|-----------------------------|--------|--------|----------|---------|---------|---------|
| ----- | | | | | | |
| System Monitoring Compounds | | | | | | |
| 4) S 2,4-DCAA | 6.479 | 6.851 | 984.1E6 | 314.0E6 | 556.196 | 553.063 |
| Target Compounds | | | | | | |
| 1) T Dalapon | 2.575 | 0.000 | 4568039 | 0 | 2.498 | N.D. # |
| 2) T 3,5-DICHL... | 5.827 | 0.000 | 327012 | 0 | <MDL | N.D. # |
| 3) T 4-Nitroph... | 6.310 | 6.442 | 12845121 | 615767 | 9.967 | 1.805 # |
| 5) T DICAMBA | 6.677f | 0.000 | 196481 | 0 | <MDL | N.D. # |
| 6) T MCPP | 6.813 | 0.000 | 1700906 | 0 | <MDL | N.D. # |
| 7) T MCPA | 6.940 | 0.000 | 488205 | 0 | <MDL | N.D. # |
| 8) T DICHLORPROP | 7.255 | 7.656 | 1489069 | 1613241 | <MDL | 2.608 # |
| 9) T 2,4-D | 0.000 | 7.871f | 0 | 2101755 | N.D. | 3.031 |
| 10) T Pentachlo... | 7.668 | 8.356 | 2068690 | 1375485 | <MDL | <MDL # |
| 11) T 2,4,5-TP ... | 8.205 | 0.000 | 3779037 | 0 | <MDL | N.D. # |
| 12) T 2,4,5-T | 8.471 | 9.134 | 3630554 | 1021336 | <MDL | <MDL # |
| 13) T 2,4-DB | 8.984 | 0.000 | 8335671 | 0 | 3.541 | N.D. # |
| 14) T DINOSEB | 10.043 | 0.000 | 789574 | 0 | <MDL | N.D. # |
| 15) T Picloram | 9.879 | 10.891 | 17612383 | 4391546 | 1.015 | <MDL # |
| 16) T DCPA | 10.323 | 10.891 | 1868888 | 4391546 | <MDL | 1.095 # |
| ----- | | | | | | |

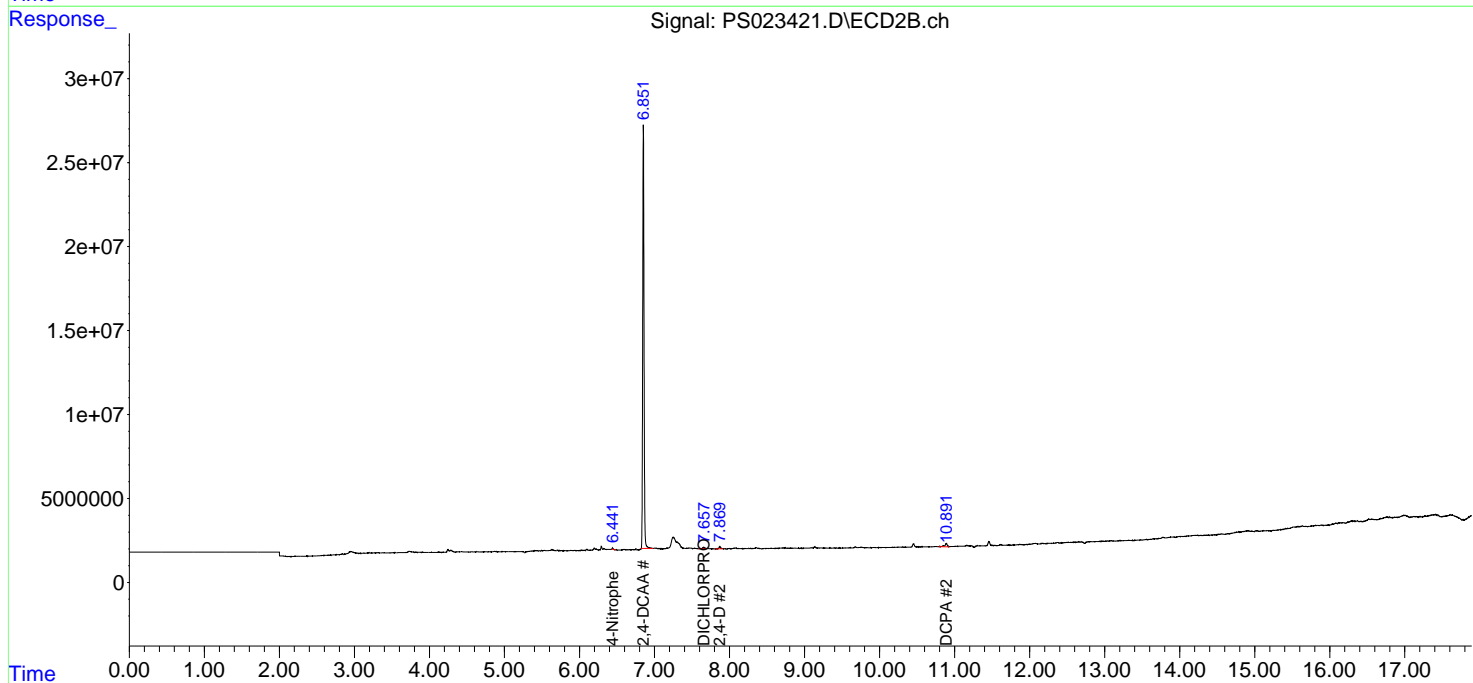
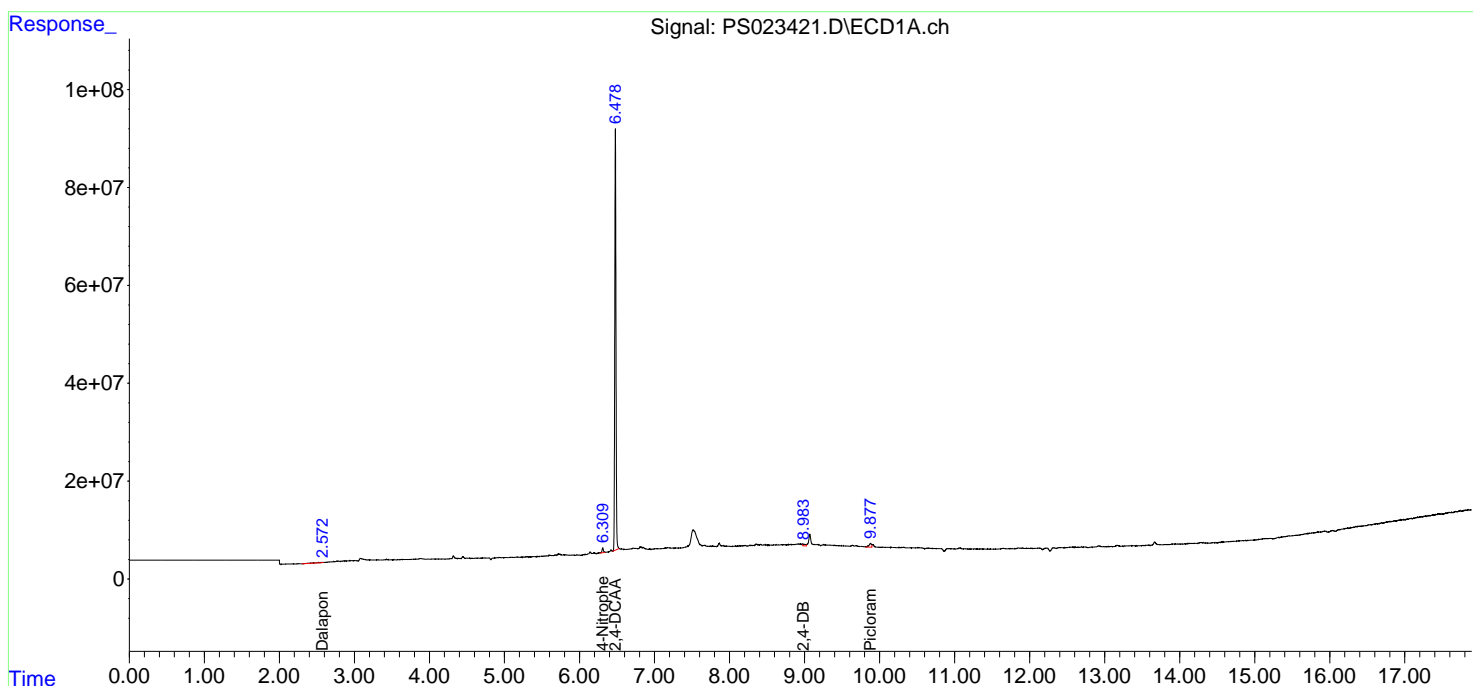
(f)=RT Delta > 1/2 Window (#)=Amounts differ by > 25% (m)=manual int.

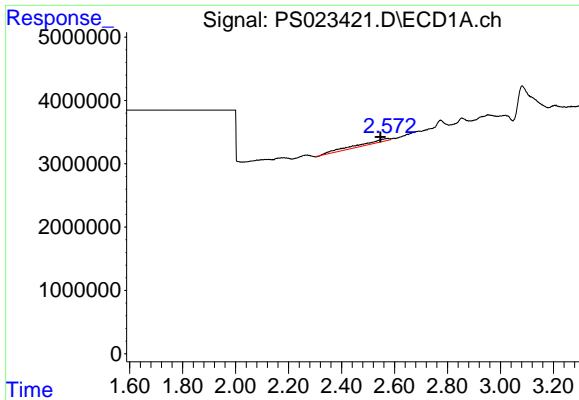
Data Path : Z:\pestpcbsrv\HPCHEM1\ECD_S\Data\PS062523\
 Data File : PS023421.D
 Signal(s) : Signal #1: ECD1A.ch Signal #2: ECD2B.ch
 Acq On : 25 Jun 2023 23:45
 Operator : AR\AJ
 Sample : I.BLK
 Misc :
 ALS Vial : 2 Sample Multiplier: 1

Instrument :
 ECD_S
 ClientSampleId :
 I.BLK

Integration File signal 1: autoint1.e
 Integration File signal 2: autoint2.e
 Quant Time: Jun 26 01:26:01 2023
 Quant Method : Z:\pestpcbsrv\HPCHEM1\ECD_S\Method\PS060623.M
 Quant Title : 8080.M
 QLast Update : Tue Jun 06 13:00:04 2023
 Response via : Initial Calibration
 Integrator: ChemStation

Volume Inj. : 2 µl
 Signal #1 Phase : Rtx-CLPesticides Signal #2 Phase: Rtx-CLPesticides2
 Signal #1 Info : 30M x 0.32mm x0.5 Signal #2 Info : 30M x 0.32mm x 0.25µm

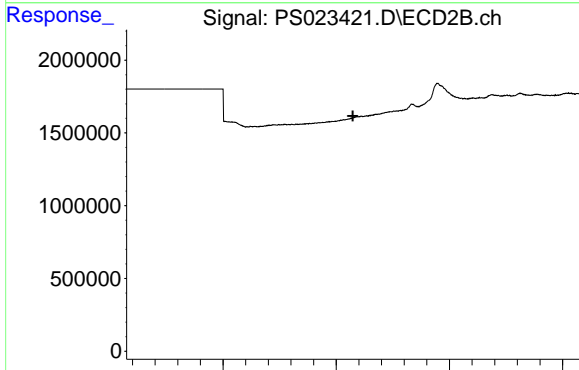




#1 Dalapon

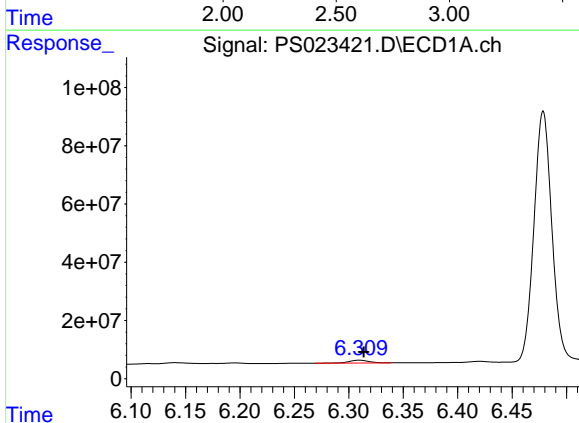
R.T.: 2.575 min
 Delta R.T.: 0.028 min
 Response: 4568039
 Conc: 2.50 ng/ml

Instrument : ECD_S
 ClientSampleId : I.BLK



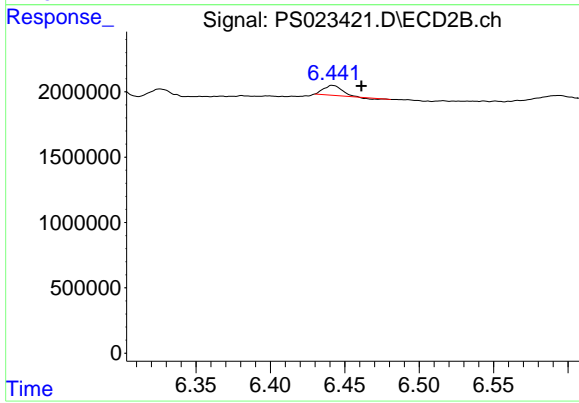
#1 Dalapon

R.T.: 0.000 min
 Exp R.T. : 2.574 min
 Response: 0
 Conc: N.D.



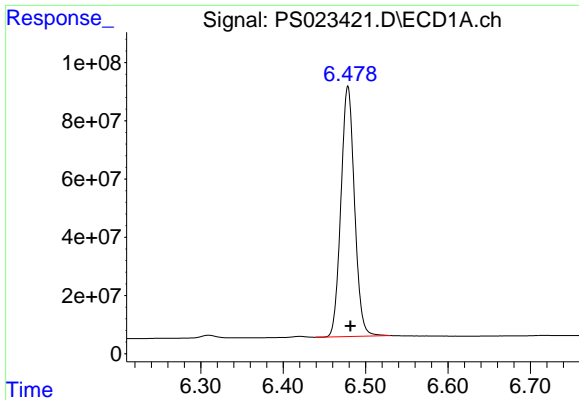
#3 4-Nitrophenol

R.T.: 6.310 min
 Delta R.T.: -0.004 min
 Response: 12845121
 Conc: 9.97 ng/ml



#3 4-Nitrophenol

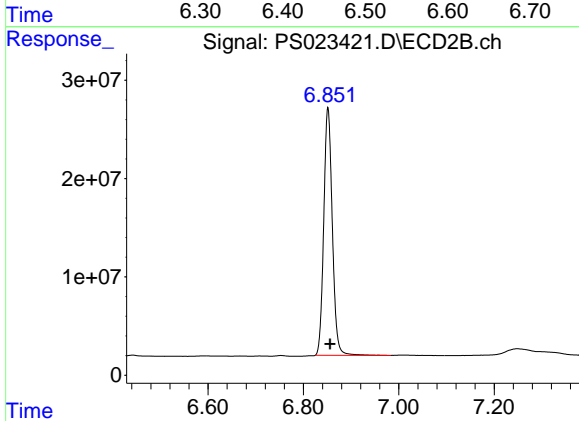
R.T.: 6.442 min
 Delta R.T.: -0.019 min
 Response: 615767
 Conc: 1.80 ng/ml



#4 2,4-DCAA

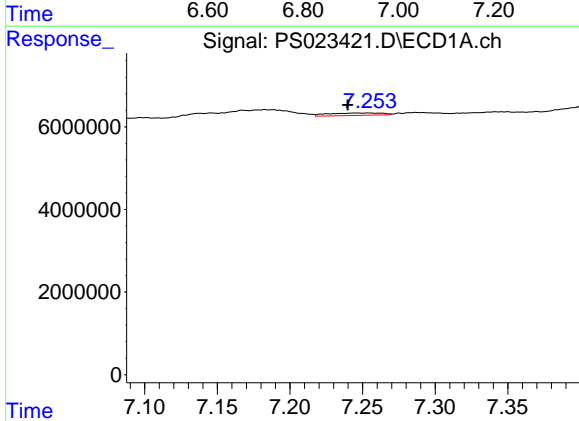
R.T.: 6.479 min
 Delta R.T.: -0.003 min
 Response: 984052843
 Conc: 556.20 ng/ml

Instrument :
 ECD_S
 ClientSampleId :
 I.BLK



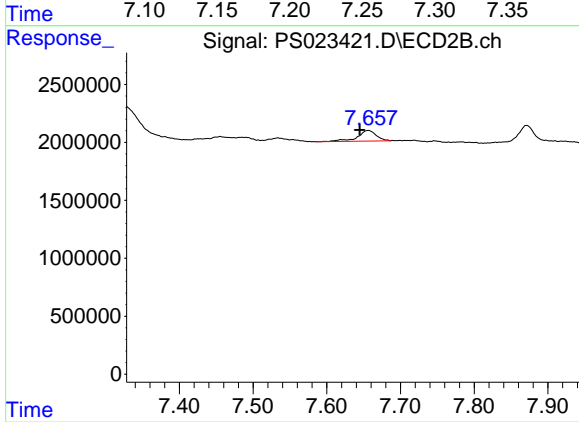
#4 2,4-DCAA

R.T.: 6.851 min
 Delta R.T.: -0.005 min
 Response: 313971208
 Conc: 553.06 ng/ml



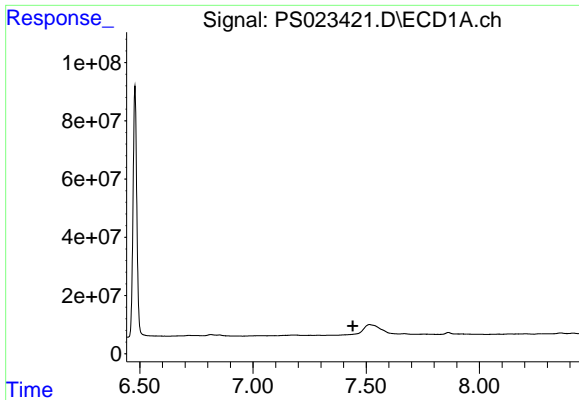
#8 DICHLORPROP

R.T.: 7.255 min
 Delta R.T.: 0.015 min
 Response: 1489069
 Conc: N.D.



#8 DICHLORPROP

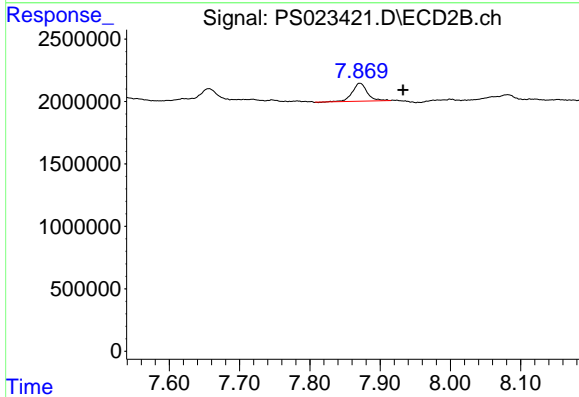
R.T.: 7.656 min
 Delta R.T.: 0.012 min
 Response: 1613241
 Conc: 2.61 ng/ml



#9 2,4-D

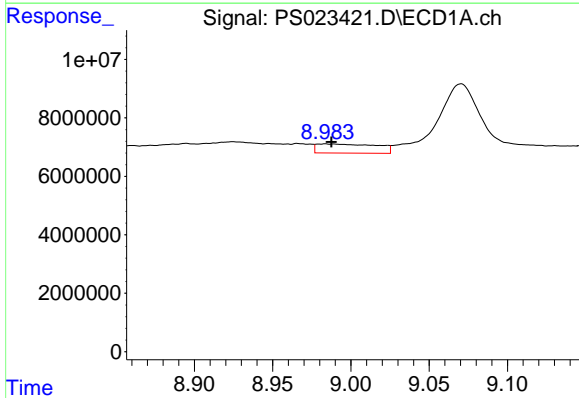
R.T.: 0.000 min
 Exp R.T.: 7.442 min
 Response: 0
 Conc: N.D.

Instrument :
 ECD_S
 ClientSampleId :
 I.BLK



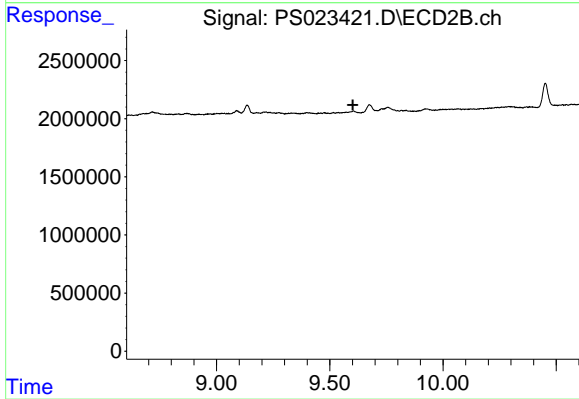
#9 2,4-D

R.T.: 7.871 min
 Delta R.T.: -0.061 min
 Response: 2101755
 Conc: 3.03 ng/ml



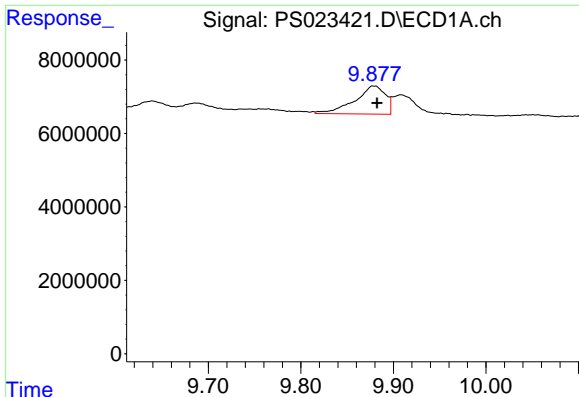
#13 2,4-DB

R.T.: 8.984 min
 Delta R.T.: -0.004 min
 Response: 8335671
 Conc: 3.54 ng/ml



#13 2,4-DB

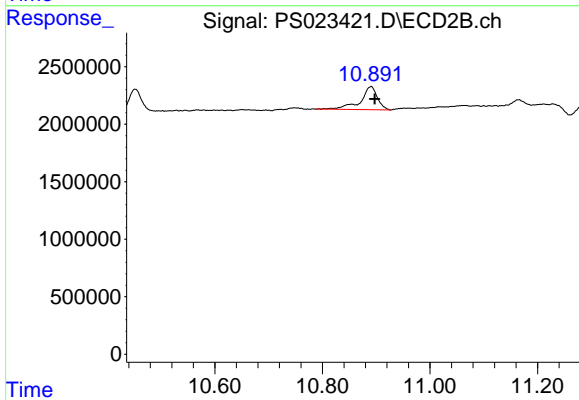
R.T.: 0.000 min
 Exp R.T.: 9.602 min
 Response: 0
 Conc: N.D.



#15 Picloram

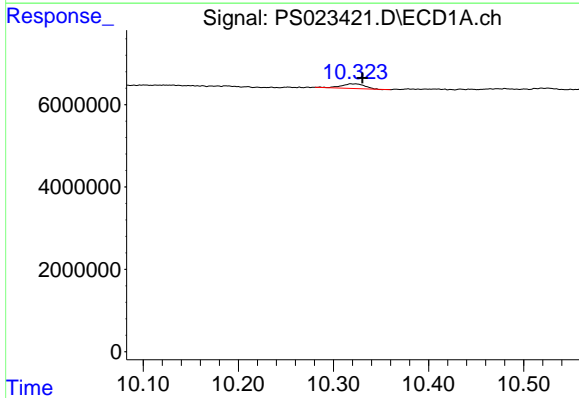
R.T.: 9.879 min
 Delta R.T.: -0.004 min
 Response: 17612383
 Conc: 1.01 ng/ml

Instrument :
 ECD_S
 ClientSampleId :
 I.BLK



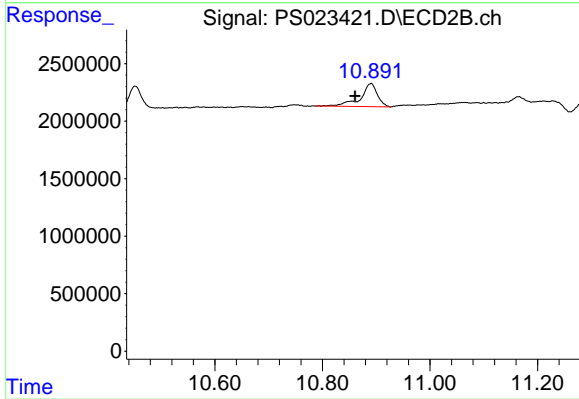
#15 Picloram

R.T.: 10.891 min
 Delta R.T.: -0.007 min
 Response: 4391546
 Conc: N.D.



#16 DCPA

R.T.: 10.323 min
 Delta R.T.: -0.007 min
 Response: 1868888
 Conc: N.D.



#16 DCPA

R.T.: 10.891 min
 Delta R.T.: 0.030 min
 Response: 4391546
 Conc: 1.09 ng/ml