

Data Path : Z:\pestpcbsrv\HPCHEM1\ECD\_S\Data\PS062623\  
 Data File : PS023453.D  
 Signal(s) : Signal #1: ECD1A.ch Signal #2: ECD2B.ch  
 Acq On : 26 Jun 2023 17:52  
 Operator : AR\AJ  
 Sample : 03365-03  
 Misc :  
 ALS Vial : 4 Sample Multiplier: 1

Instrument :  
 ECD\_S  
 ClientSampleId :

Integration File signal 1: autoint1.e  
 Integration File signal 2: autoint2.e  
 Quant Time: Jun 26 18:38:15 2023  
 Quant Method : Z:\pestpcbsrv\HPCHEM1\ECD\_S\Method\PS060623.M  
 Quant Title : 8080.M  
 QLast Update : Tue Jun 06 13:00:04 2023  
 Response via : Initial Calibration  
 Integrator: ChemStation

Volume Inj. : 2 µl  
 Signal #1 Phase : Rtx-CLPesticides Signal #2 Phase: Rtx-CLPesticides2  
 Signal #1 Info : 30M x 0.32mm x0.5 Signal #2 Info : 30M x 0.32mm x 0.25µm

Compound	RT#1	RT#2	Resp#1	Resp#2	ng/ml	ng/ml
-----						
System Monitoring Compounds						
4) S 2,4-DCAA	6.477	6.850	1058.3E6	322.4E6	598.136	567.939
Target Compounds						
1) T Dalapon	2.517	2.542	32708740	73265354	17.888	79.927 #
2) T 3,5-DICHL...	5.824	6.041	2775260	1675110	1.033	1.892 #
3) T 4-Nitroph...	6.288	6.493	62592008	7622716	48.565	22.344 #
5) T DICAMBA	6.653	7.051	3988183	1351358	<MDL	<MDL #
6) T MCPP	6.806	7.102	94241597	262008	17.099	<MDL #
7) T MCPA	6.946	7.319	31120695	26417643	3.975	9.829 #
8) T DICHLORPROP	7.215	7.653	23440115	30314114	11.359	49.005 #
9) T 2,4-D	7.438	7.927	5467322	1459966	2.238	2.105
10) T Pentachlo...	7.668	8.355	1914001	5538271	<MDL	<MDL #
11) T 2,4,5-TP ...	8.202	8.738	25116711	6665768	2.172	1.997
12) T 2,4,5-T	8.480	9.071	80400723	20018459	7.077	6.530
13) T 2,4-DB	8.997	9.603	191.5E6	4057253	81.343	10.942 #
14) T DINOSEB	10.121f	9.912	25930604	9536814	3.131	4.019 #
15) T Picloram	9.874	10.887	445.6E6	127.3E6	25.675	27.888
16) T DCPA	10.319	10.887	28866670	127.3E6	2.071	31.724 #
-----						

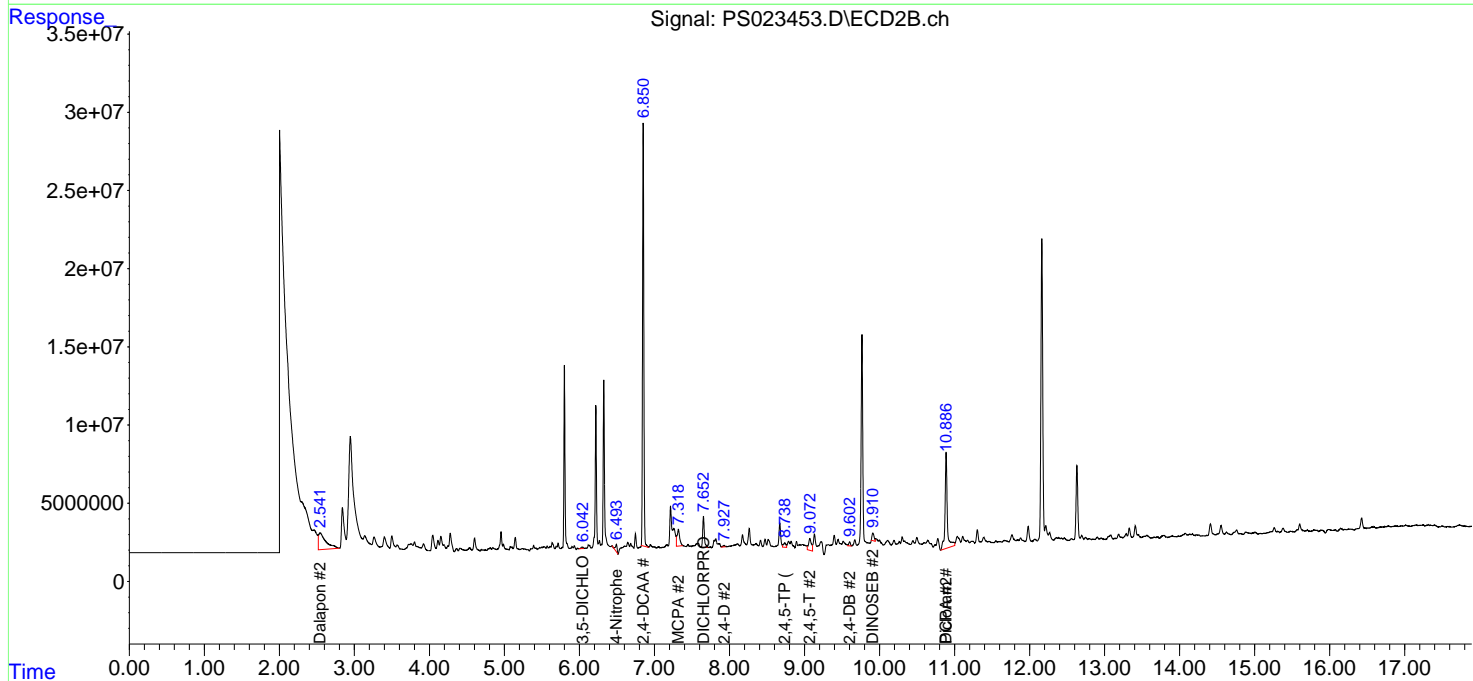
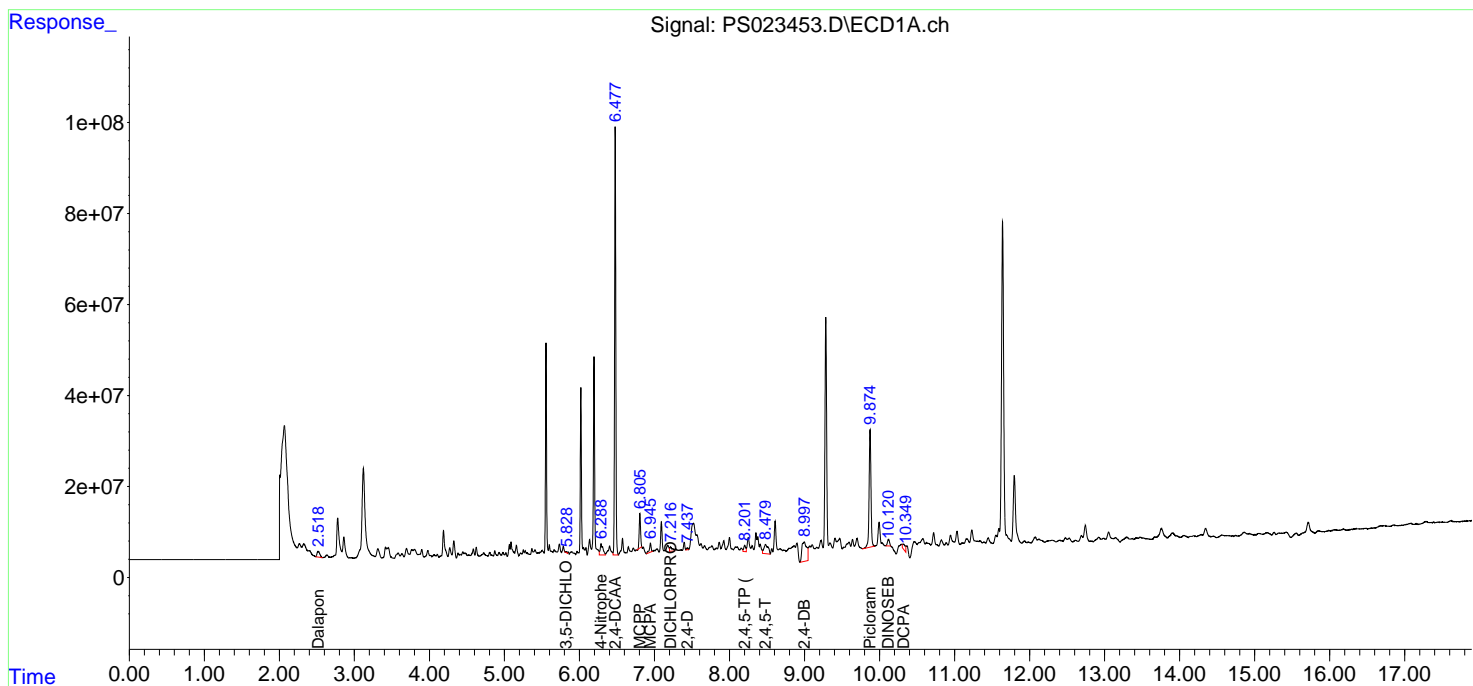
(f)=RT Delta > 1/2 Window (#)=Amounts differ by > 25% (m)=manual int.

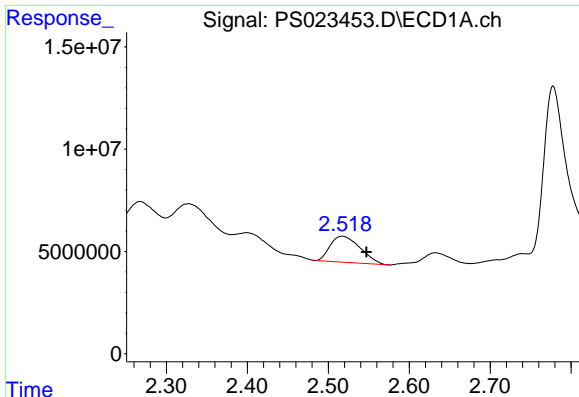
Data Path : Z:\pestpcbsrv\HPCHEM1\ECD\_S\Data\PS062623\  
 Data File : PS023453.D  
 Signal(s) : Signal #1: ECD1A.ch Signal #2: ECD2B.ch  
 Acq On : 26 Jun 2023 17:52  
 Operator : AR\AJ  
 Sample : 03365-03  
 Misc :  
 ALS Vial : 4 Sample Multiplier: 1

Instrument :  
 ECD\_S  
 ClientSampleId :

Integration File signal 1: autoint1.e  
 Integration File signal 2: autoint2.e  
 Quant Time: Jun 26 18:38:15 2023  
 Quant Method : Z:\pestpcbsrv\HPCHEM1\ECD\_S\Method\PS060623.M  
 Quant Title : 8080.M  
 QLast Update : Tue Jun 06 13:00:04 2023  
 Response via : Initial Calibration  
 Integrator: ChemStation

Volume Inj. : 2 µl  
 Signal #1 Phase : Rtx-CLPesticides Signal #2 Phase: Rtx-CLPesticides2  
 Signal #1 Info : 30M x 0.32mm x 0.5 Signal #2 Info : 30M x 0.32mm x 0.25µm

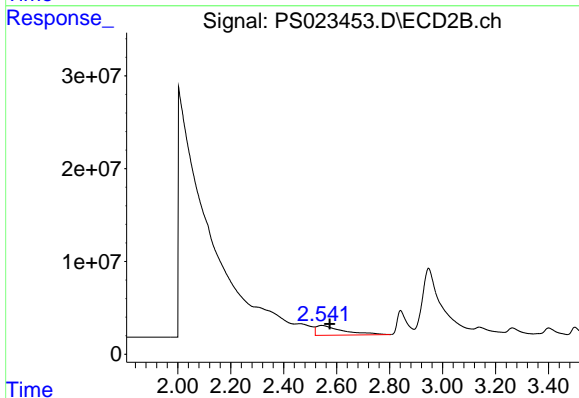




#1 Dalapon

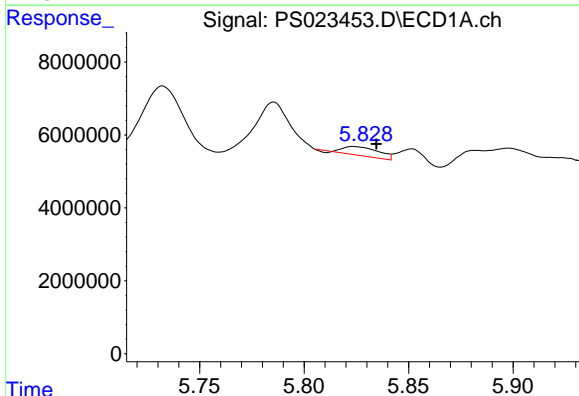
R.T.: 2.517 min  
 Delta R.T.: -0.030 min  
 Response: 32708740  
 Conc: 17.89 ng/ml

Instrument :  
 ECD\_S  
 ClientSampleId :



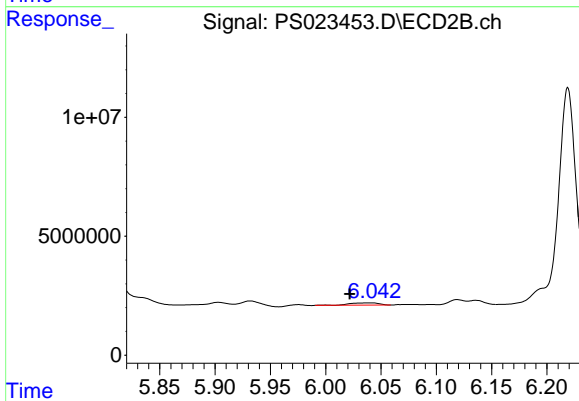
#1 Dalapon

R.T.: 2.542 min  
 Delta R.T.: -0.031 min  
 Response: 73265354  
 Conc: 79.93 ng/ml



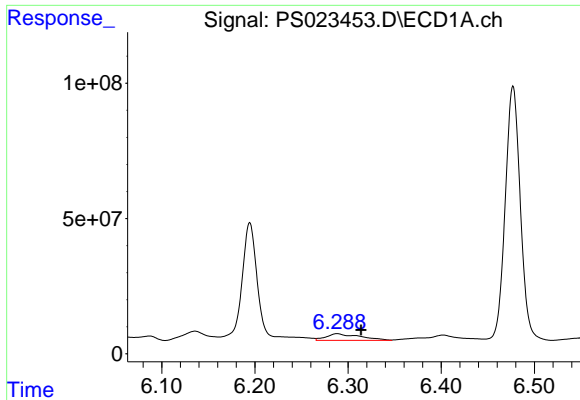
#2 3,5-DICHLOROBENZOIC ACID

R.T.: 5.824 min  
 Delta R.T.: -0.010 min  
 Response: 2775260  
 Conc: 1.03 ng/ml



#2 3,5-DICHLOROBENZOIC ACID

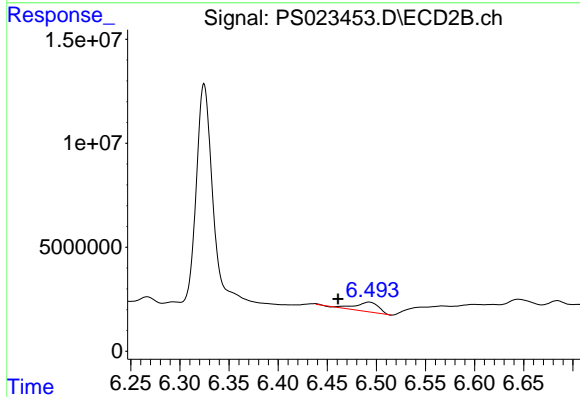
R.T.: 6.041 min  
 Delta R.T.: 0.019 min  
 Response: 1675110  
 Conc: 1.89 ng/ml



#3 4-Nitrophenol

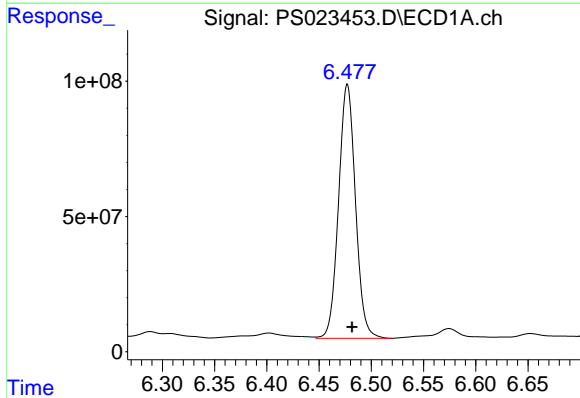
R.T.: 6.288 min  
Delta R.T.: -0.025 min  
Response: 62592008  
Conc: 48.57 ng/ml

Instrument :  
ECD\_S  
ClientSampleId :



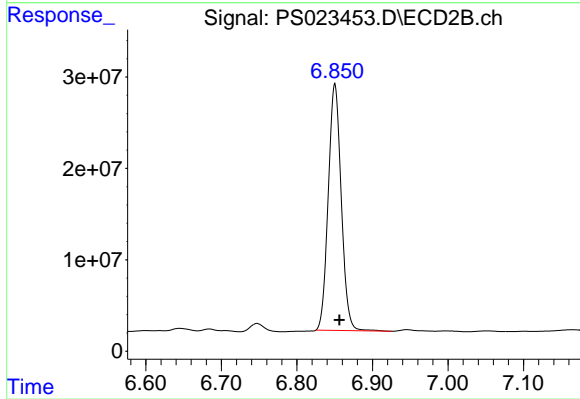
#3 4-Nitrophenol

R.T.: 6.493 min  
Delta R.T.: 0.031 min  
Response: 7622716  
Conc: 22.34 ng/ml



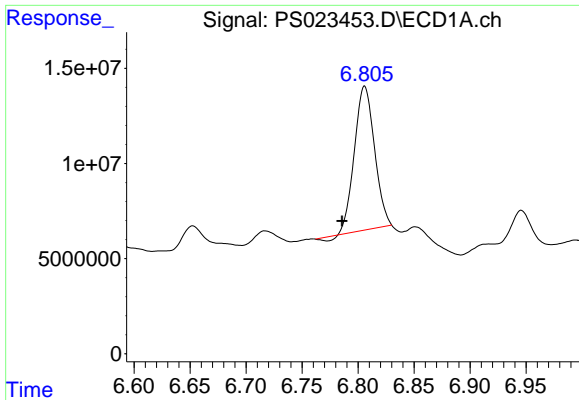
#4 2,4-DCAA

R.T.: 6.477 min  
Delta R.T.: -0.005 min  
Response: 1058256370  
Conc: 598.14 ng/ml



#4 2,4-DCAA

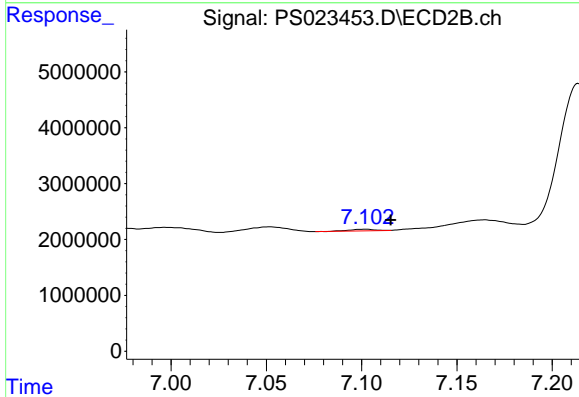
R.T.: 6.850 min  
Delta R.T.: -0.006 min  
Response: 322416286  
Conc: 567.94 ng/ml



#6 MCPP

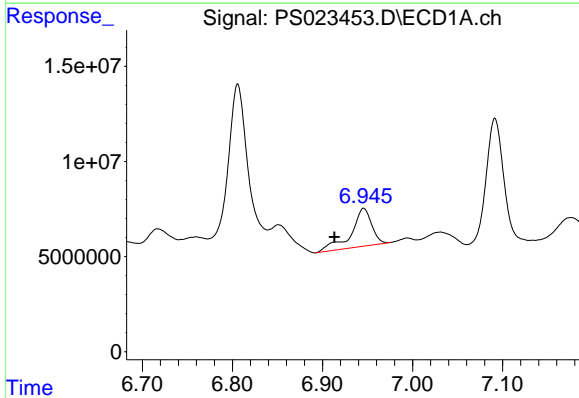
R.T.: 6.806 min  
 Delta R.T.: 0.020 min  
 Response: 94241597  
 Conc: 17.10 ug/ml

Instrument :  
 ECD\_S  
 ClientSampleId :



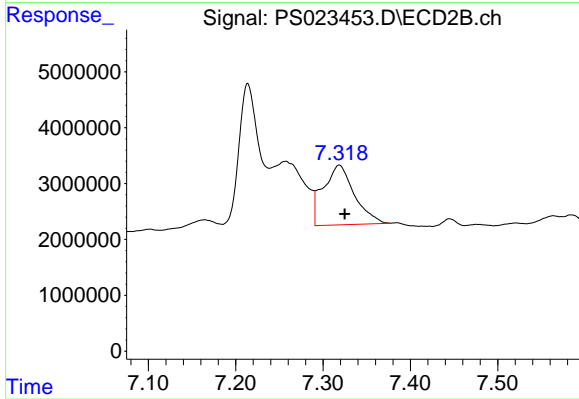
#6 MCPP

R.T.: 7.102 min  
 Delta R.T.: -0.013 min  
 Response: 262008  
 Conc: N.D.



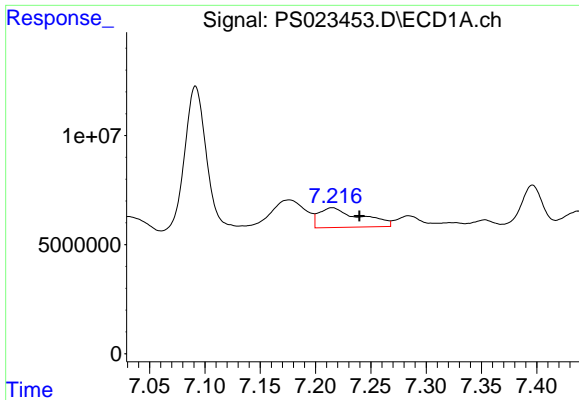
#7 MCPA

R.T.: 6.946 min  
 Delta R.T.: 0.033 min  
 Response: 31120695  
 Conc: 3.97 ug/ml



#7 MCPA

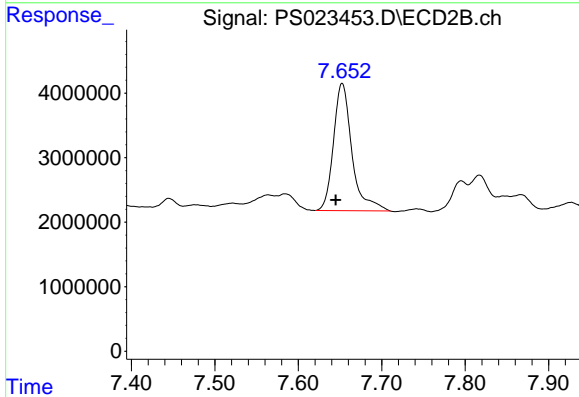
R.T.: 7.319 min  
 Delta R.T.: -0.006 min  
 Response: 26417643  
 Conc: 9.83 ug/ml



#8 DICHLORPROP

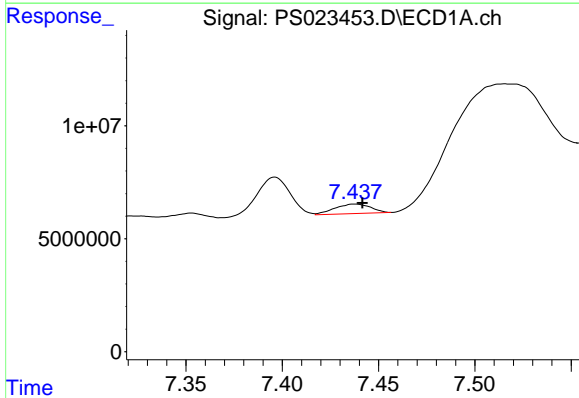
R.T.: 7.215 min  
 Delta R.T.: -0.025 min  
 Response: 23440115  
 Conc: 11.36 ng/ml

Instrument :  
 ECD\_S  
 ClientSampleId :



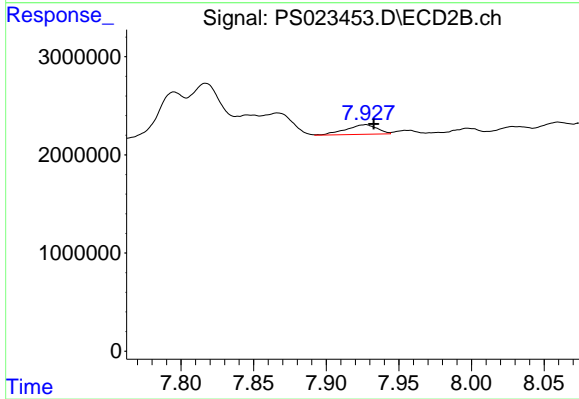
#8 DICHLORPROP

R.T.: 7.653 min  
 Delta R.T.: 0.008 min  
 Response: 30314114  
 Conc: 49.01 ng/ml



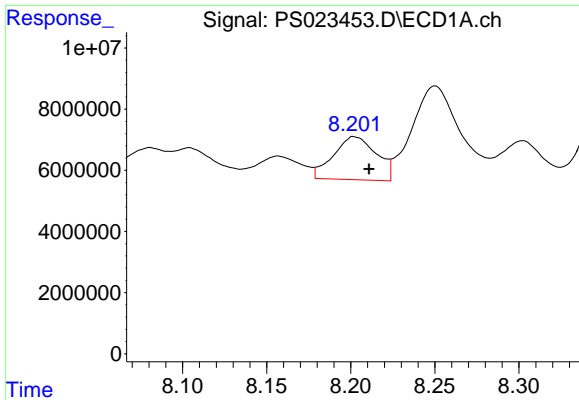
#9 2,4-D

R.T.: 7.438 min  
 Delta R.T.: -0.004 min  
 Response: 5467322  
 Conc: 2.24 ng/ml



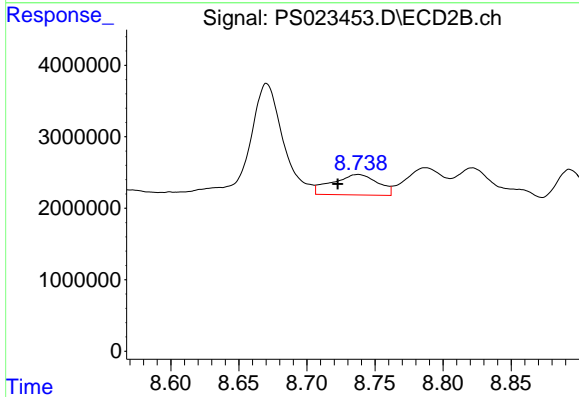
#9 2,4-D

R.T.: 7.927 min  
 Delta R.T.: -0.006 min  
 Response: 1459966  
 Conc: 2.11 ng/ml

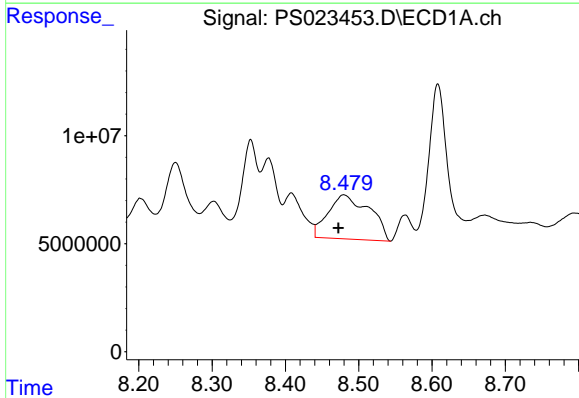


#11 2,4,5-TP (SILVEX)  
 R.T.: 8.202 min  
 Delta R.T.: -0.009 min  
 Response: 25116711  
 Conc: 2.17 ng/ml

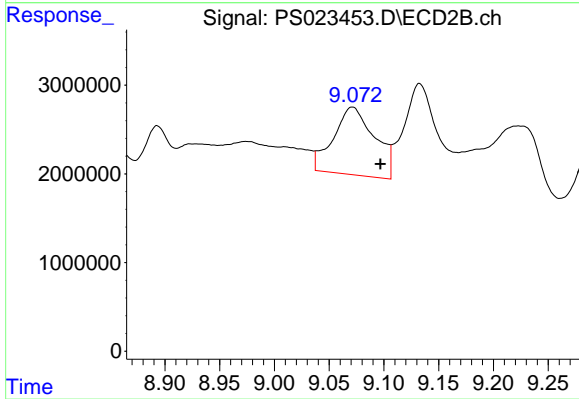
Instrument :  
 ECD\_S  
 ClientSampleId :



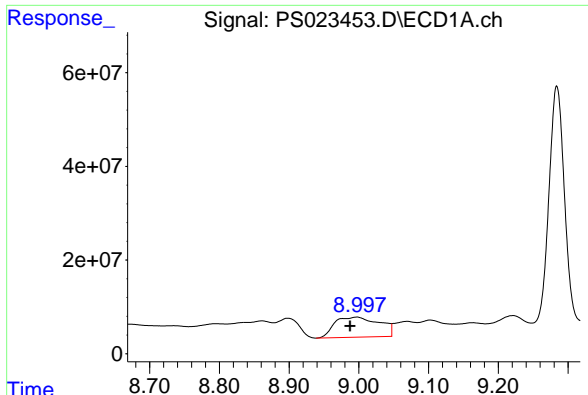
#11 2,4,5-TP (SILVEX)  
 R.T.: 8.738 min  
 Delta R.T.: 0.015 min  
 Response: 6665768  
 Conc: 2.00 ng/ml



#12 2,4,5-T  
 R.T.: 8.480 min  
 Delta R.T.: 0.008 min  
 Response: 80400723  
 Conc: 7.08 ng/ml



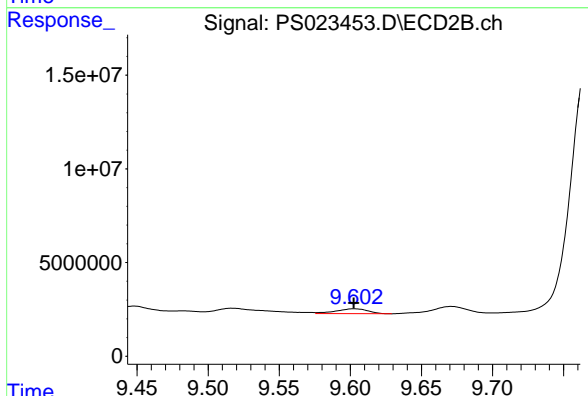
#12 2,4,5-T  
 R.T.: 9.071 min  
 Delta R.T.: -0.025 min  
 Response: 20018459  
 Conc: 6.53 ng/ml



#13 2,4-DB

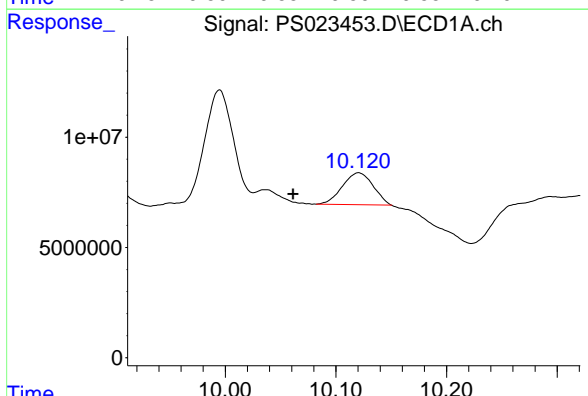
R.T.: 8.997 min  
 Delta R.T.: 0.009 min  
 Response: 191488898  
 Conc: 81.34 ng/ml

Instrument :  
 ECD\_S  
 ClientSampleId :



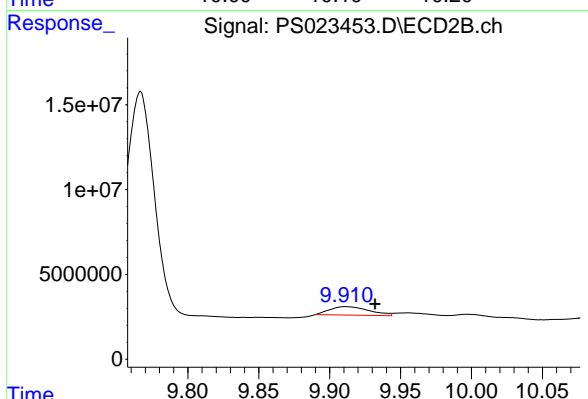
#13 2,4-DB

R.T.: 9.603 min  
 Delta R.T.: 0.000 min  
 Response: 4057253  
 Conc: 10.94 ng/ml



#14 DINOSEB

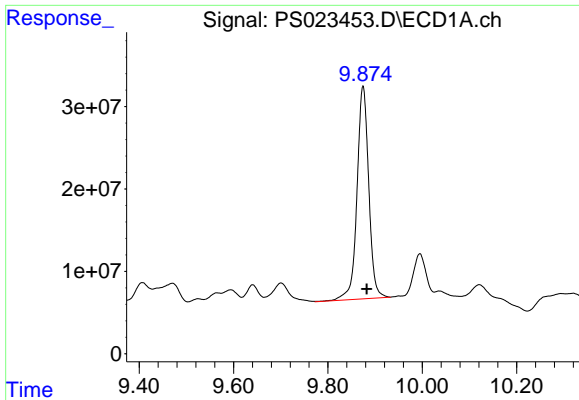
R.T.: 10.121 min  
 Delta R.T.: 0.059 min  
 Response: 25930604  
 Conc: 3.13 ng/ml



#14 DINOSEB

R.T.: 9.912 min  
 Delta R.T.: -0.021 min  
 Response: 9536814  
 Conc: 4.02 ng/ml

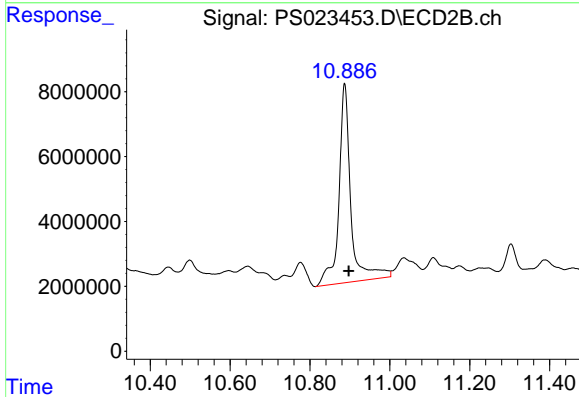




#15 Picloram

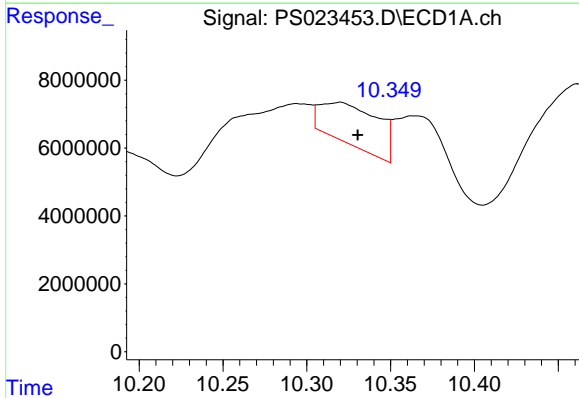
R.T.: 9.874 min  
 Delta R.T.: -0.008 min  
 Response: 445573166  
 Conc: 25.67 ng/ml

Instrument :  
 ECD\_S  
 ClientSampleId :



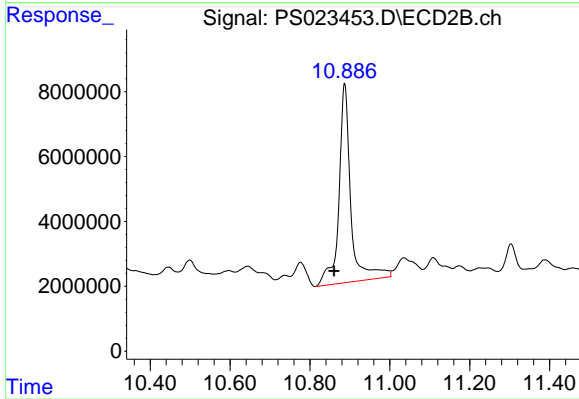
#15 Picloram

R.T.: 10.887 min  
 Delta R.T.: -0.011 min  
 Response: 127273785  
 Conc: 27.89 ng/ml



#16 DCPA

R.T.: 10.319 min  
 Delta R.T.: -0.011 min  
 Response: 28866670  
 Conc: 2.07 ng/ml



#16 DCPA

R.T.: 10.887 min  
 Delta R.T.: 0.026 min  
 Response: 127273785  
 Conc: 31.72 ng/ml