

Data Path : Z:\pestpcbsrv\HPCHEM1\ECD_S\Data\PS070120\
 Data File : PS011032.D
 Signal(s) : Signal #1: ECD1A.ch Signal #2: ECD2B.ch
 Acq On : 01 Jul 2020 17:17
 Operator : DD\AJ
 Sample : L3153-20
 Misc :
 ALS Vial : 15 Sample Multiplier: 1

Instrument :
 ECD_S
 ClientSampleId :

Integration File signal 1: autoint1.e
 Integration File signal 2: autoint2.e
 Quant Time: Jul 02 05:03:15 2020
 Quant Method : Z:\pestpcbsrv\HPCHEM1\ECD_S\Method\PS062420.M
 Quant Title : 8080.M
 QLast Update : Thu Jun 25 02:45:12 2020
 Response via : Initial Calibration
 Integrator: ChemStation

Volume Inj. : 2 µl
 Signal #1 Phase : Rtx-CLPesticides Signal #2 Phase: Rtx-CLPesticides2
 Signal #1 Info : 30M x 0.32mm x0.5 Signal #2 Info : 30M x 0.32mm x 0.25µm

	Compound	RT#1	RT#2	Resp#1	Resp#2	ng/ml	ng/ml

System Monitoring Compounds							
4) S	2,4-DCAA	7.229	6.920	243.7E6	178.5E6	268.771	322.240
Target Compounds							
1) T	Dalapon	2.994	2.584	37998432	117.6E6	33.936	155.939 #
2) T	3,5-DICHL...	0.000	6.100	0	81180575	N.D.	97.476
3) T	4-Nitroph...	7.120	0.000	8782823	0	22.002	N.D. #
5) T	DICAMBA	7.408	7.054	6030388	6307387	1.654	2.777 #
6) T	MCPD	7.640	0.000	5150230	0	1.806	N.D. #
7) T	MCPA	7.692	7.460	140.3E6	126.8E6	35.229	45.941 #
8) T	DICHLORPROP	0.000	7.740	0	9106808	N.D.	15.511
10) T	Pentachlo...	8.709	0.000	12133149	0	<MDL	N.D. #
12) T	2,4,5-T	9.427	0.000	26859316	0	5.766	N.D. #
14) T	DINOSEB	11.169	10.066	11822733	15926713	3.301	7.649 #
15) T	Picloram	10.996	0.000	32958091	0	5.879	N.D. #

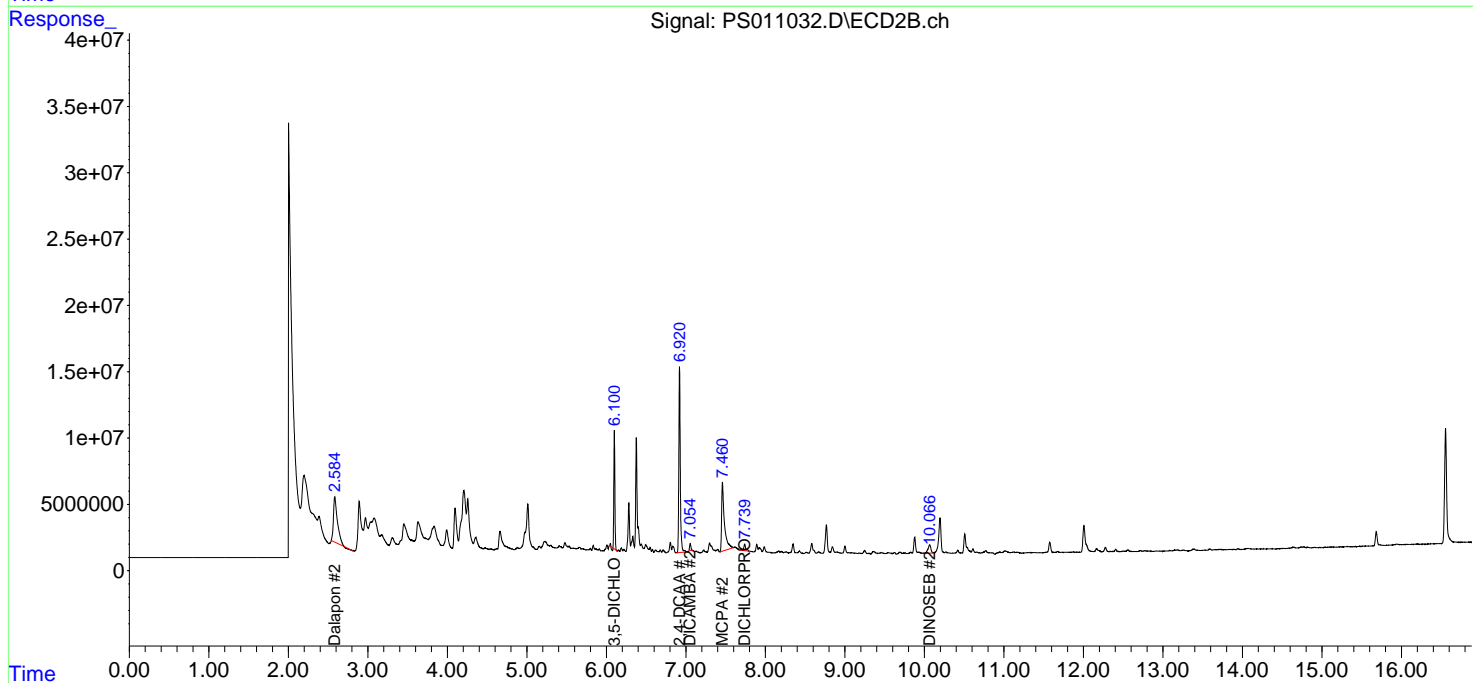
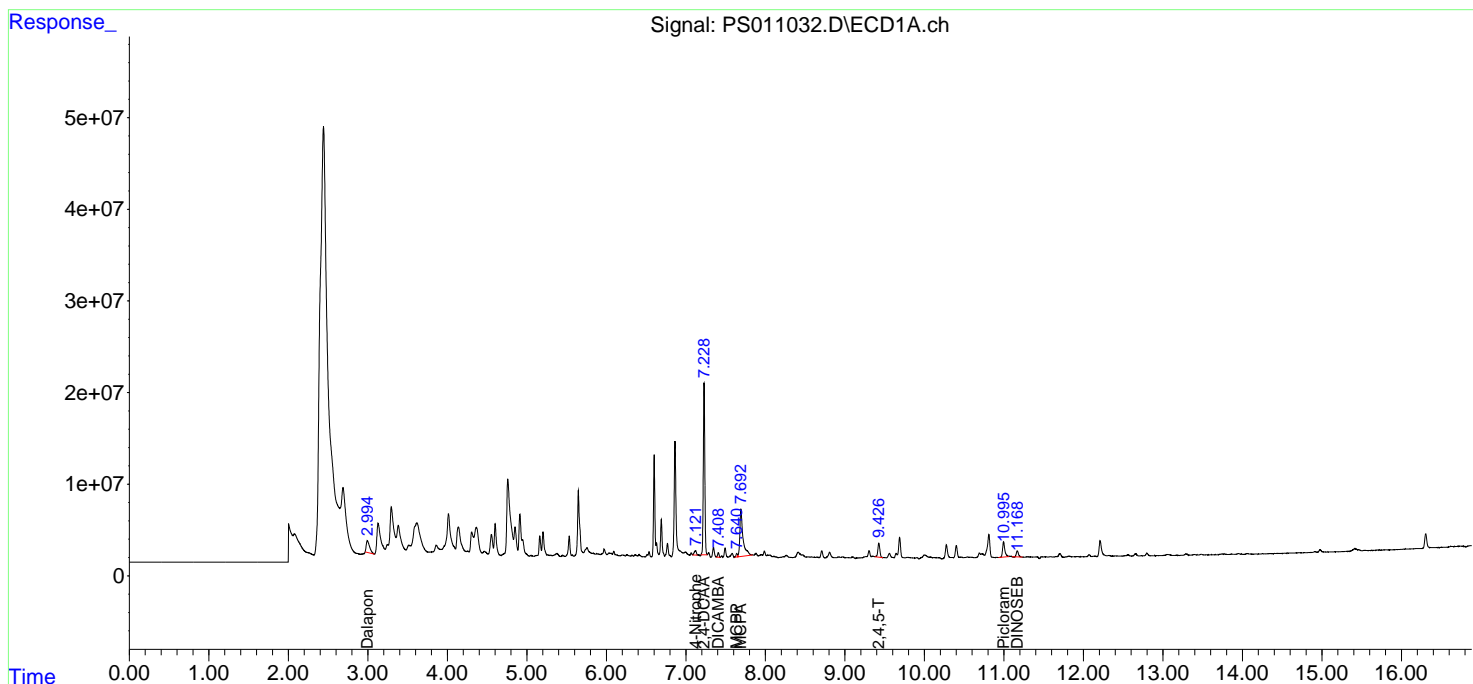
(f)=RT Delta > 1/2 Window (#)=Amounts differ by > 25% (m)=manual int.

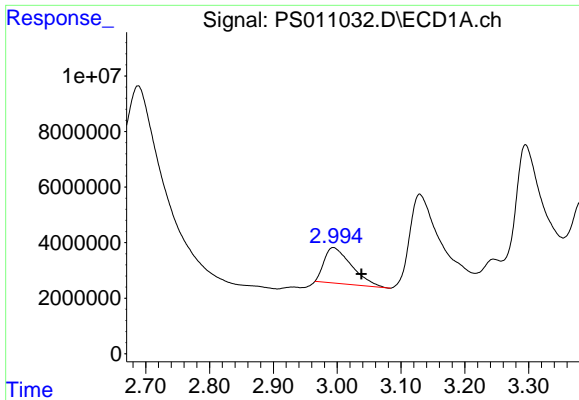
Data Path : Z:\pestpcbsrv\HPCHEM1\ECD_S\Data\PS070120\
 Data File : PS011032.D
 Signal(s) : Signal #1: ECD1A.ch Signal #2: ECD2B.ch
 Acq On : 01 Jul 2020 17:17
 Operator : DD\AJ
 Sample : L3153-20
 Misc :
 ALS Vial : 15 Sample Multiplier: 1

Instrument :
 ECD_S
 ClientSampled :

Integration File signal 1: autoint1.e
 Integration File signal 2: autoint2.e
 Quant Time: Jul 02 05:03:15 2020
 Quant Method : Z:\pestpcbsrv\HPCHEM1\ECD_S\Method\PS062420.M
 Quant Title : 8080.M
 QLast Update : Thu Jun 25 02:45:12 2020
 Response via : Initial Calibration
 Integrator: ChemStation

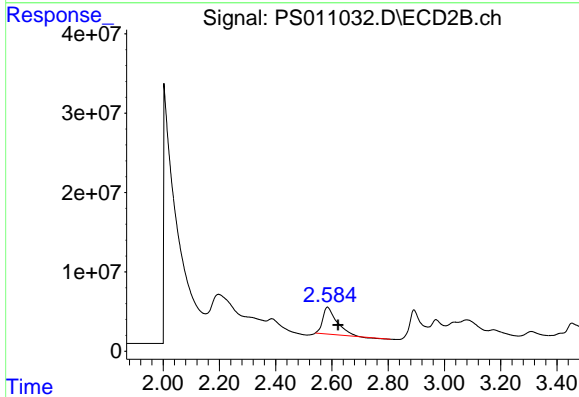
Volume Inj. : 2 µl
 Signal #1 Phase : Rtx-CLPesticides Signal #2 Phase: Rtx-CLPesticides2
 Signal #1 Info : 30M x 0.32mm x0.5 Signal #2 Info : 30M x 0.32mm x 0.25µm



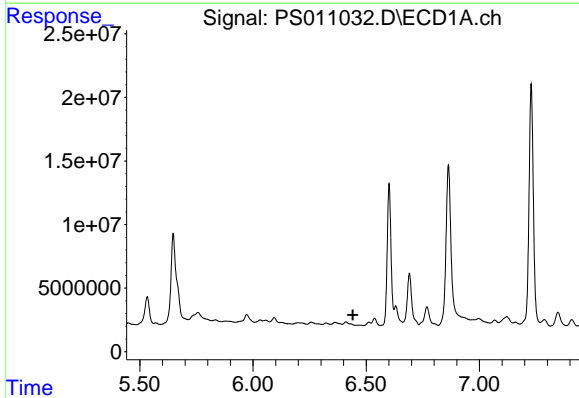


#1 Dalapon
 R.T.: 2.994 min
 Delta R.T.: -0.044 min
 Response: 37998432
 Conc: 33.94 ng/ml

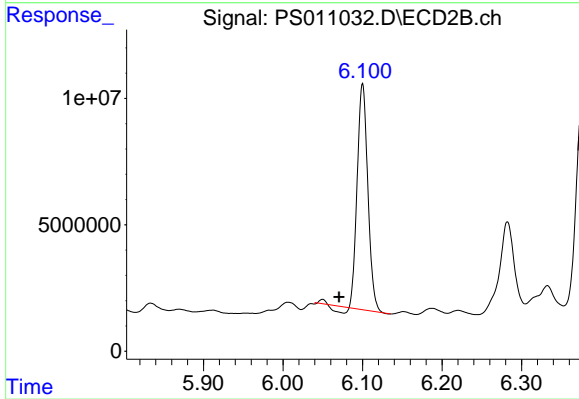
Instrument :
 ECD_S
 ClientSampled :



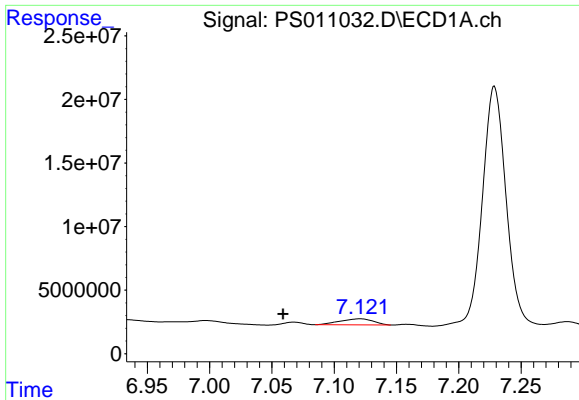
#1 Dalapon
 R.T.: 2.584 min
 Delta R.T.: -0.038 min
 Response: 117634063
 Conc: 155.94 ng/ml



#2 3,5-DICHLOROBENZOIC ACID
 R.T.: 0.000 min
 Exp R.T. : 6.441 min
 Response: 0
 Conc: N.D.

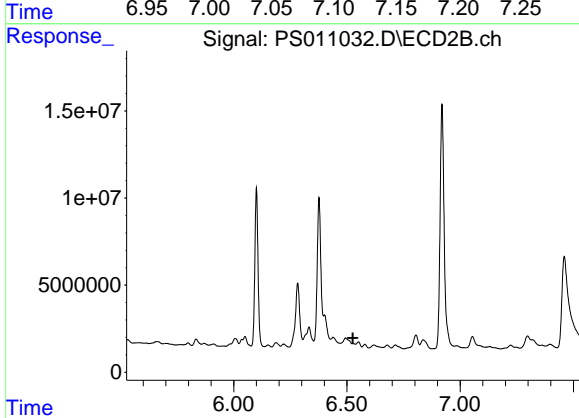


#2 3,5-DICHLOROBENZOIC ACID
 R.T.: 6.100 min
 Delta R.T.: 0.030 min
 Response: 81180575
 Conc: 97.48 ng/ml

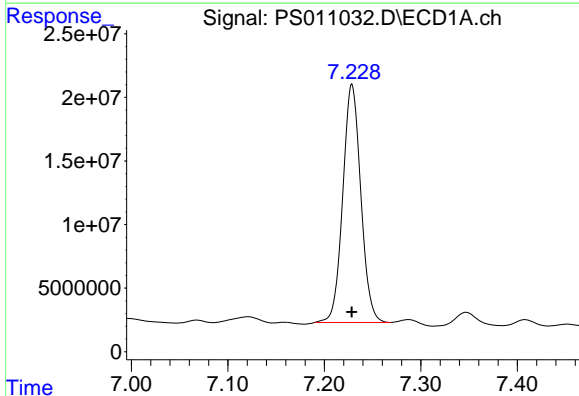


#3 4-Nitrophenol
 R.T.: 7.120 min
 Delta R.T.: 0.062 min
 Response: 8782823
 Conc: 22.00 ng/ml

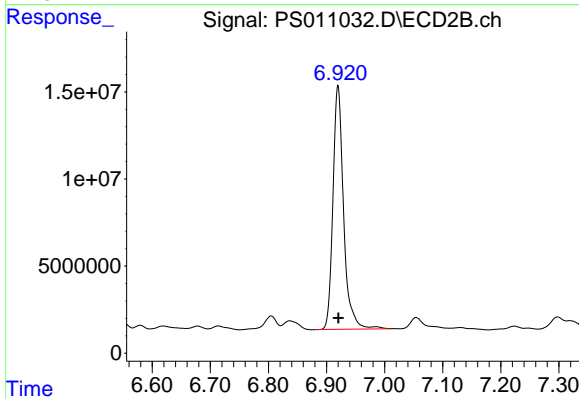
Instrument :
 ECD_S
 ClientSampled :



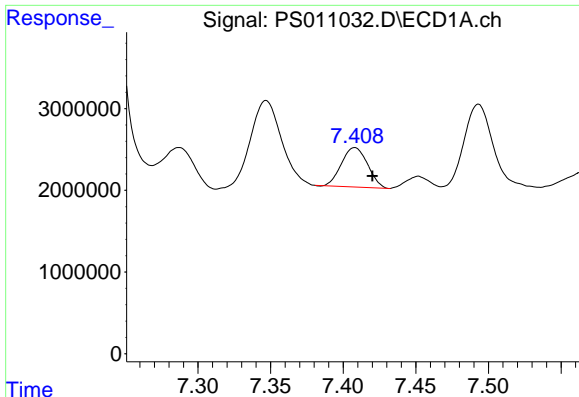
#3 4-Nitrophenol
 R.T.: 0.000 min
 Exp R.T. : 6.526 min
 Response: 0
 Conc: N.D.



#4 2,4-DCAA
 R.T.: 7.229 min
 Delta R.T.: 0.000 min
 Response: 243726208
 Conc: 268.77 ng/ml



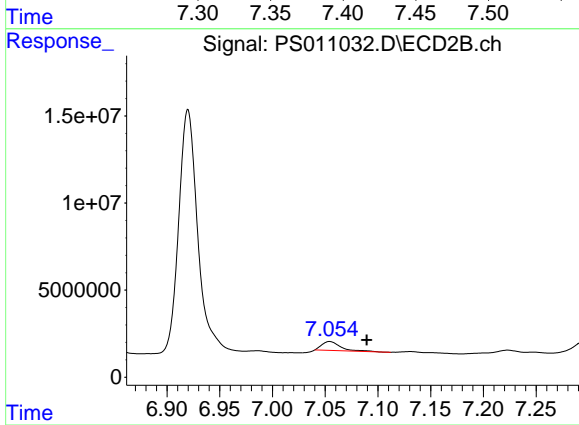
#4 2,4-DCAA
 R.T.: 6.920 min
 Delta R.T.: 0.000 min
 Response: 178545388
 Conc: 322.24 ng/ml



#5 DICAMBA

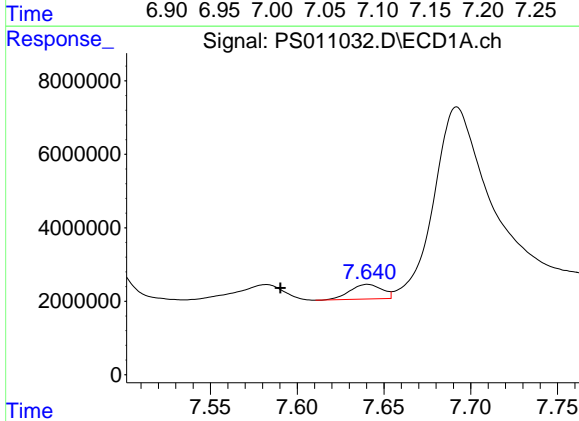
R.T.: 7.408 min
 Delta R.T.: -0.012 min
 Response: 6030388
 Conc: 1.65 ng/ml

Instrument :
 ECD_S
 ClientSampled :



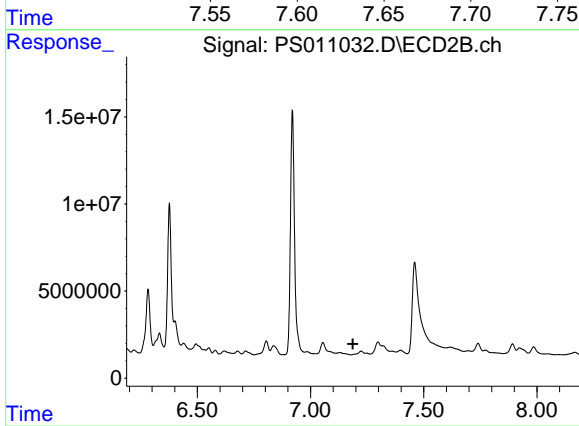
#5 DICAMBA

R.T.: 7.054 min
 Delta R.T.: -0.035 min
 Response: 6307387
 Conc: 2.78 ng/ml



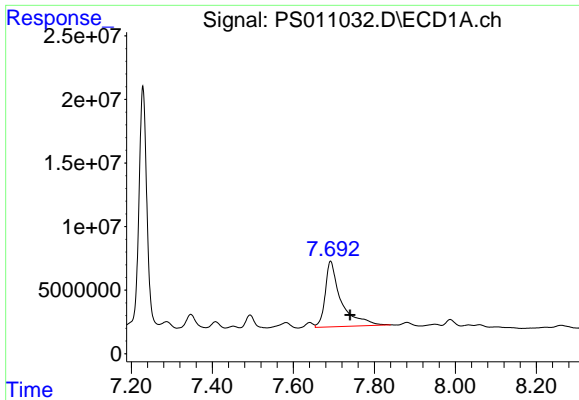
#6 MCPP

R.T.: 7.640 min
 Delta R.T.: 0.050 min
 Response: 5150230
 Conc: 1.81 ug/ml



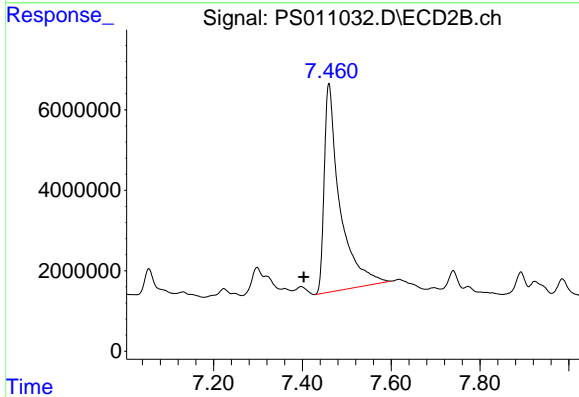
#6 MCPP

R.T.: 0.000 min
 Exp R.T. : 7.187 min
 Response: 0
 Conc: N.D.

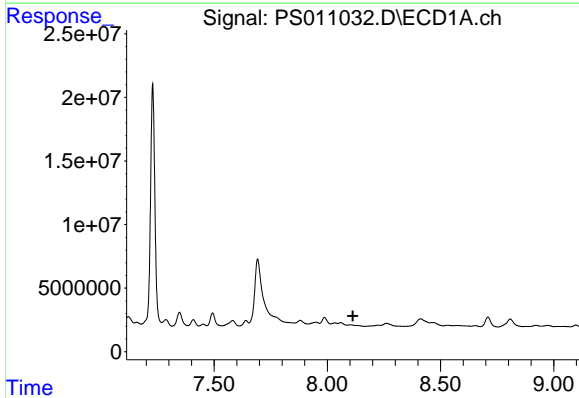


#7 MCPA
 R.T.: 7.692 min
 Delta R.T.: -0.048 min
 Response: 140298226
 Conc: 35.23 ug/ml

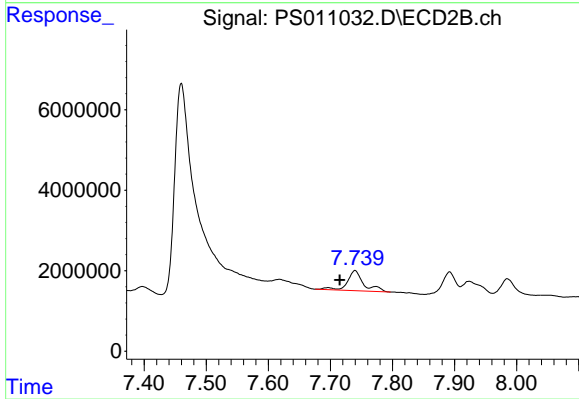
Instrument :
 ECD_S
 ClientSampled :



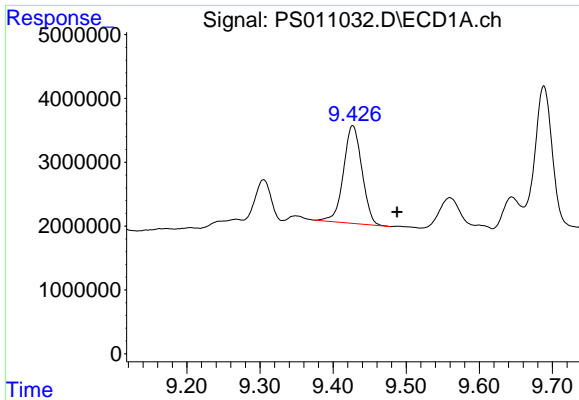
#7 MCPA
 R.T.: 7.460 min
 Delta R.T.: 0.057 min
 Response: 126796705
 Conc: 45.94 ug/ml



#8 DICHLORPROP
 R.T.: 0.000 min
 Exp R.T. : 8.113 min
 Response: 0
 Conc: N.D.



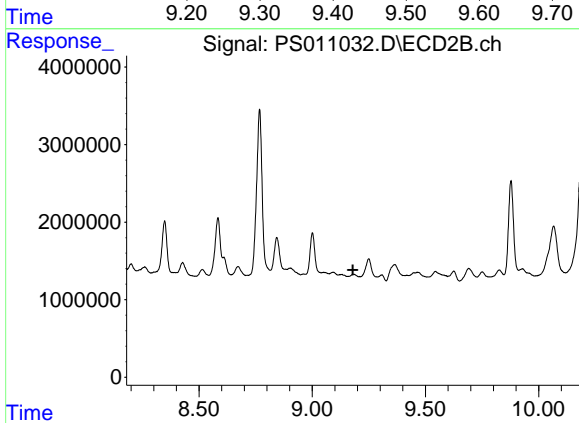
#8 DICHLORPROP
 R.T.: 7.740 min
 Delta R.T.: 0.024 min
 Response: 9106808
 Conc: 15.51 ng/ml



#12 2,4,5-T

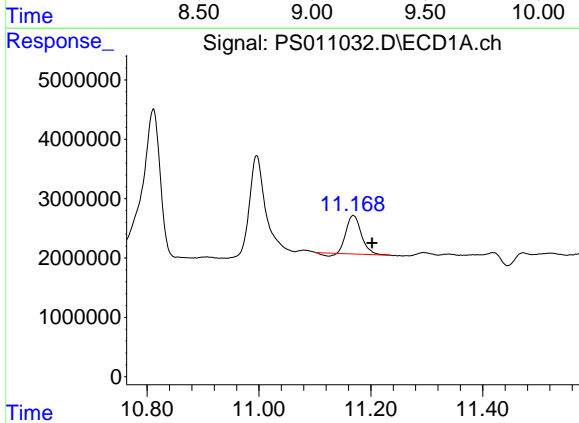
R.T.: 9.427 min
 Delta R.T.: -0.061 min
 Response: 26859316
 Conc: 5.77 ng/ml

Instrument :
 ECD_S
 ClientSampled :



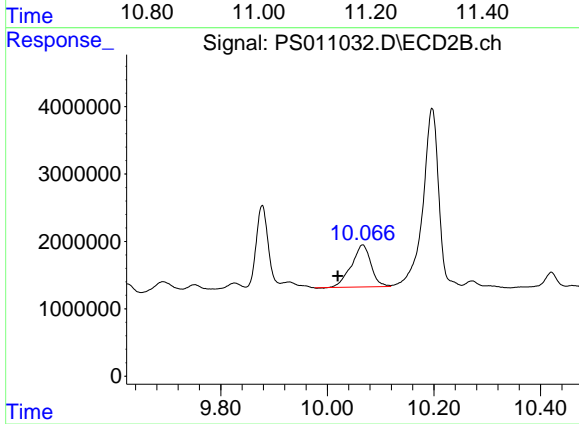
#12 2,4,5-T

R.T.: 0.000 min
 Exp R.T. : 9.179 min
 Response: 0
 Conc: N.D.



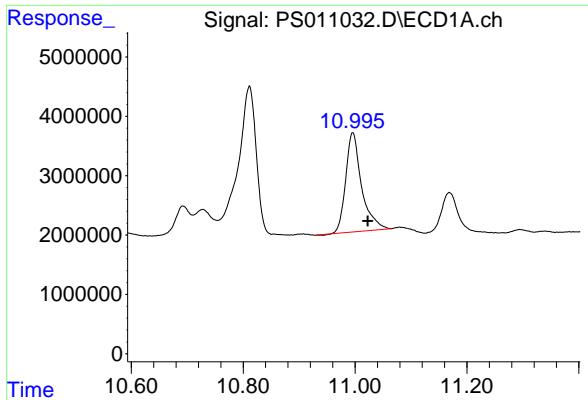
#14 DINOSEB

R.T.: 11.169 min
 Delta R.T.: -0.033 min
 Response: 11822733
 Conc: 3.30 ng/ml



#14 DINOSEB

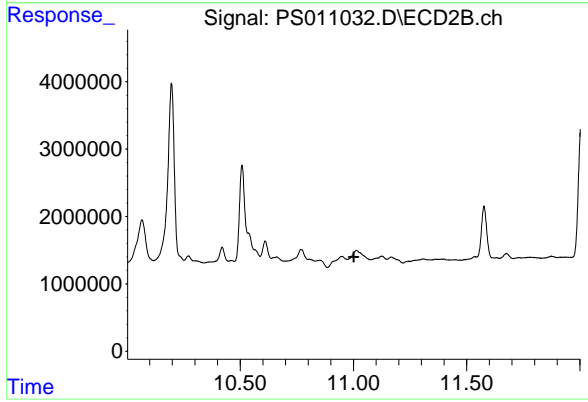
R.T.: 10.066 min
 Delta R.T.: 0.046 min
 Response: 15926713
 Conc: 7.65 ng/ml



#15 Picloram

R.T.: 10.996 min
Delta R.T.: -0.027 min
Response: 32958091
Conc: 5.88 ng/ml

Instrument :
ECD_S
ClientSampleId :



#15 Picloram

R.T.: 0.000 min
Exp R.T. : 11.002 min
Response: 0
Conc: N.D.