

Data Path : Z:\pestpcbsrv\HPCHEM1\ECD_S\Data\PS070120\
 Data File : PS011043.D
 Signal(s) : Signal #1: ECD1A.ch Signal #2: ECD2B.ch
 Acq On : 01 Jul 2020 21:30
 Operator : DD\AJ
 Sample : PB129894BSD
 Misc :
 ALS Vial : 24 Sample Multiplier: 1

Instrument :
 ECD_S
 ClientSampleId :

Integration File signal 1: autoint1.e
 Integration File signal 2: autoint2.e
 Quant Time: Jul 02 05:06:24 2020
 Quant Method : Z:\pestpcbsrv\HPCHEM1\ECD_S\Method\PS062420.M
 Quant Title : 8080.M
 QLast Update : Thu Jun 25 02:45:12 2020
 Response via : Initial Calibration
 Integrator: ChemStation

Volume Inj. : 2 µl
 Signal #1 Phase : Rtx-CLPesticides Signal #2 Phase: Rtx-CLPesticides2
 Signal #1 Info : 30M x 0.32mm x0.5 Signal #2 Info : 30M x 0.32mm x 0.25µm

	Compound	RT#1	RT#2	Resp#1	Resp#2	ng/ml	ng/ml

System Monitoring Compounds							
4) S	2,4-DCAA	7.228	6.920	453.5E6	291.5E6	500.090	526.017
Target Compounds							
1) T	Dalapon	3.039	2.626	366.3E6	403.6E6	327.139	535.028 #
2) T	3,5-DICHL...	6.441	6.070	582.6E6	366.9E6	463.063	440.600
3) T	4-Nitroph...	7.059	6.526	139.3E6	97501098	349.090	303.426
5) T	DICAMBA	7.419	7.088	1554.0E6	989.0E6	426.195	435.428
6) T	MCP P	7.587	7.183	136.4E6	82209443	47.820	43.433
7) T	MCPA	7.735	7.397	173.2E6	159.5E6	43.500	57.801 #
8) T	DICHLORPROP	8.112	7.714	398.9E6	270.4E6	454.882	460.609
9) T	2,4-D	8.341	8.008	451.2E6	357.0E6	510.282	493.970
10) T	Pentachlo...	8.652	8.439	6022.7E6	3499.8E6	484.365	503.305
11) T	2,4,5-TP ...	9.201	8.799	2390.3E6	1434.3E6	481.398	476.696
12) T	2,4,5-T	9.487	9.178	2128.0E6	1406.8E6	456.862	472.408
13) T	2,4-DB	10.039	9.685	236.9E6	188.8E6	398.614	459.405
14) T	DINOSEB	11.201	10.019	1675.2E6	1002.4E6	467.750	481.446
15) T	Picloram	11.022	11.001	2233.0E6	1524.0E6	398.306	363.761
16) T	DCPA	11.467	10.947	2542.7E6	1761.8E6	415.911	473.040

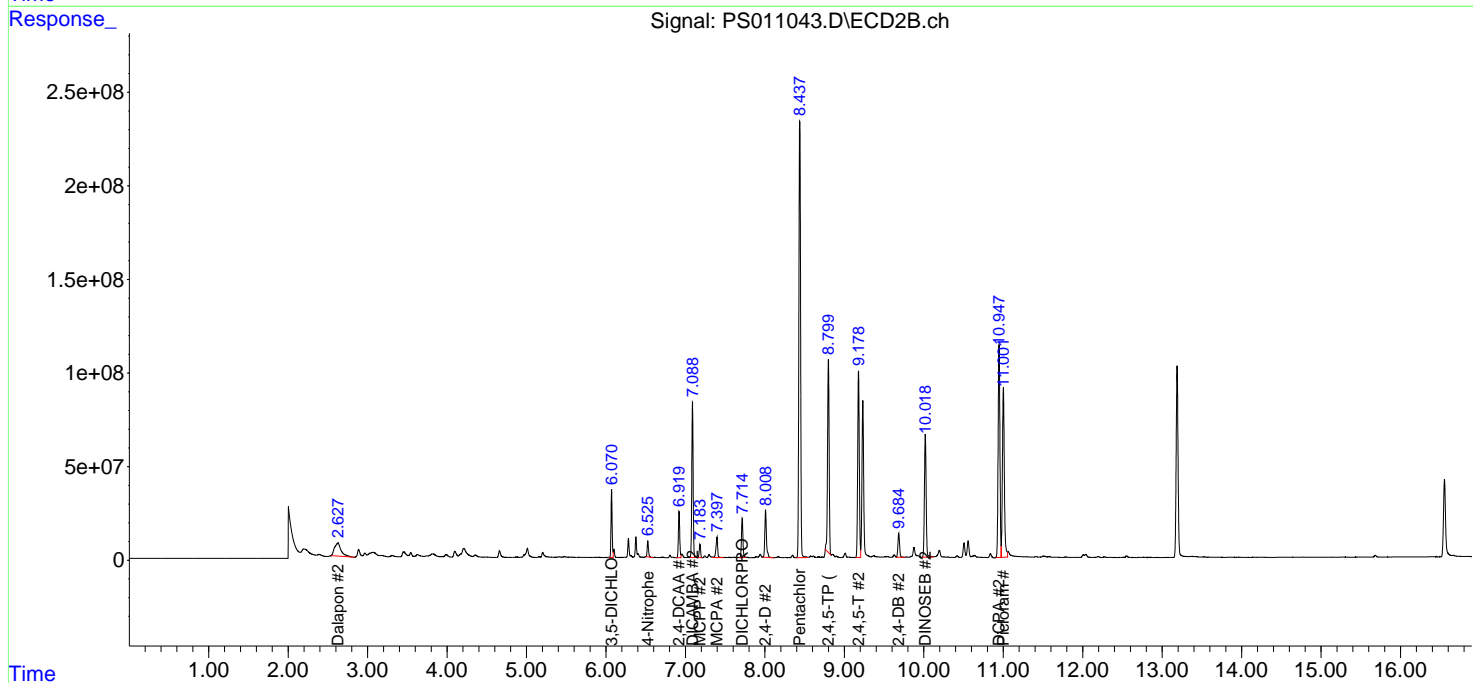
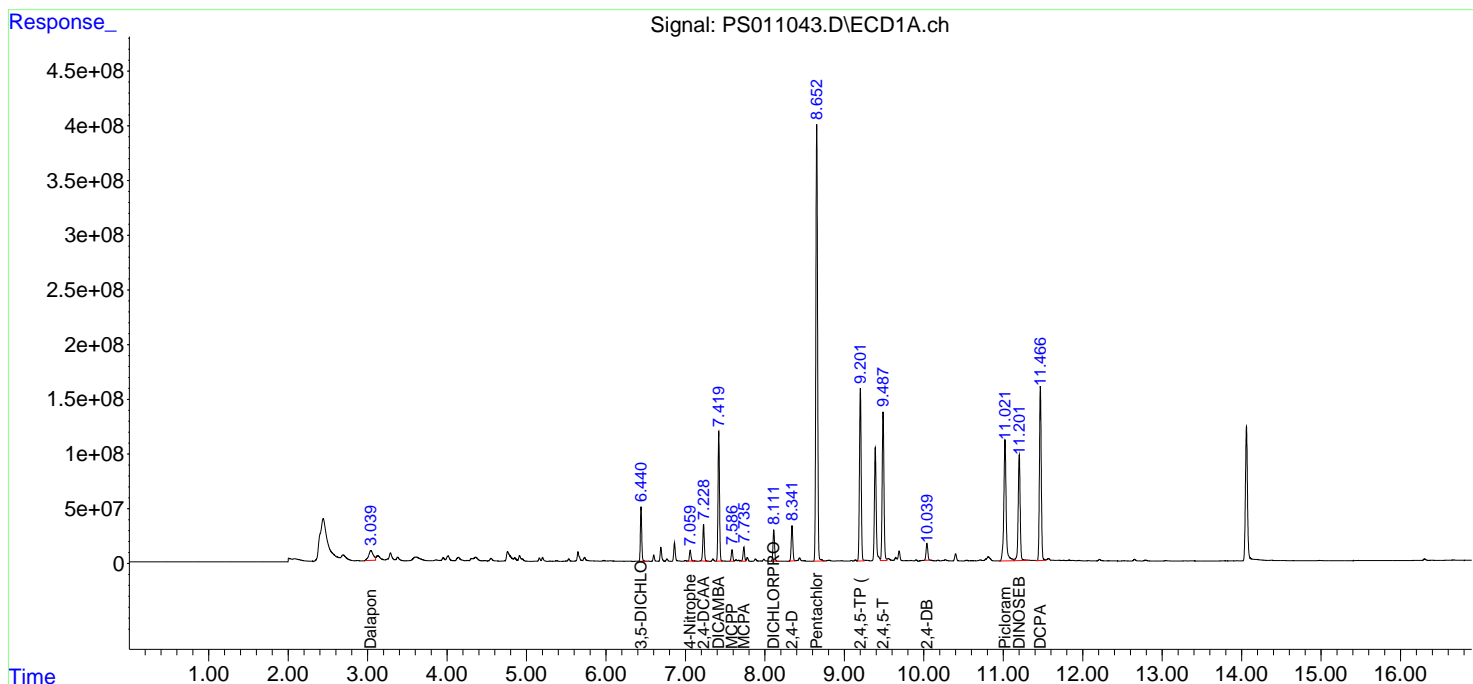
(f)=RT Delta > 1/2 Window (#)=Amounts differ by > 25% (m)=manual int.

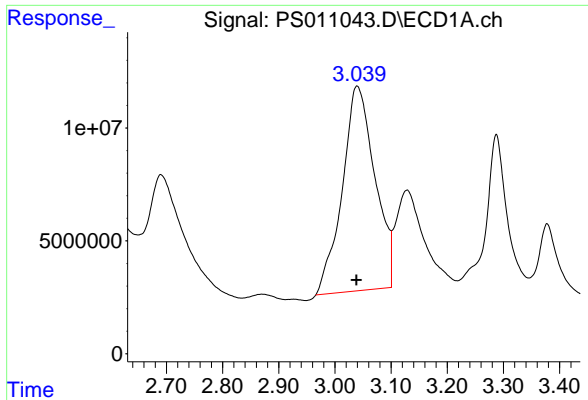
Data Path : Z:\pestpcbsrv\HPCHEM1\ECD_S\Data\PS070120\
 Data File : PS011043.D
 Signal(s) : Signal #1: ECD1A.ch Signal #2: ECD2B.ch
 Acq On : 01 Jul 2020 21:30
 Operator : DD\AJ
 Sample : PB129894BSD
 Misc :
 ALS Vial : 24 Sample Multiplier: 1

Instrument :
 ECD_S
 ClientSampled :

Integration File signal 1: autoint1.e
 Integration File signal 2: autoint2.e
 Quant Time: Jul 02 05:06:24 2020
 Quant Method : Z:\pestpcbsrv\HPCHEM1\ECD_S\Method\PS062420.M
 Quant Title : 8080.M
 QLast Update : Thu Jun 25 02:45:12 2020
 Response via : Initial Calibration
 Integrator: ChemStation

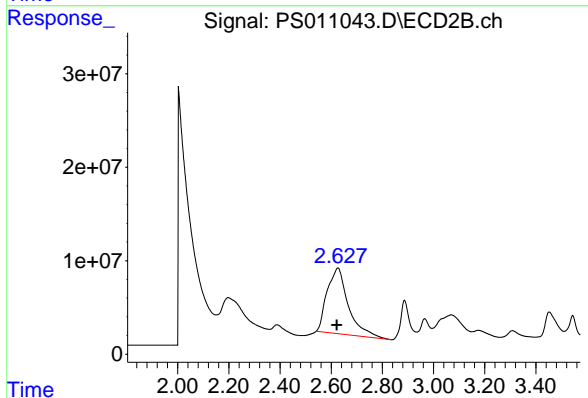
Volume Inj. : 2 µl
 Signal #1 Phase : Rtx-CLPesticides Signal #2 Phase: Rtx-CLPesticides2
 Signal #1 Info : 30M x 0.32mm x0.5 Signal #2 Info : 30M x 0.32mm x 0.25µm



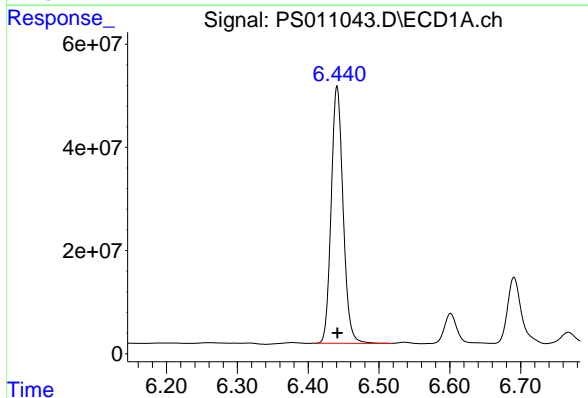


#1 Dalapon
 R.T.: 3.039 min
 Delta R.T.: 0.001 min
 Response: 366304847
 Conc: 327.14 ng/ml

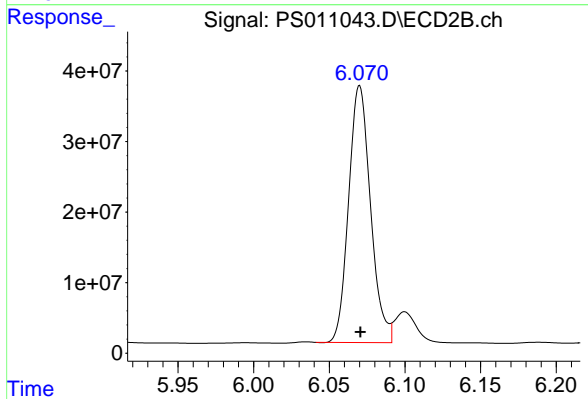
Instrument :
 ECD_S
 ClientSampled :



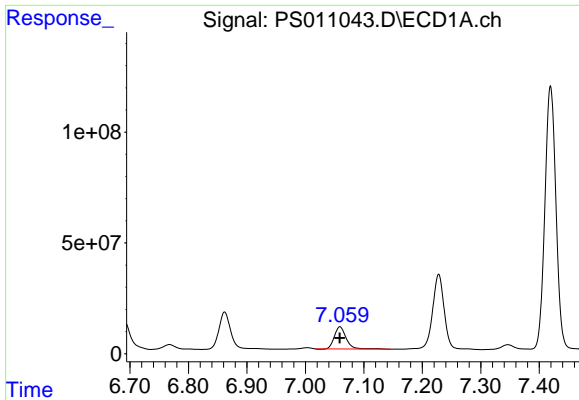
#1 Dalapon
 R.T.: 2.626 min
 Delta R.T.: 0.004 min
 Response: 403604001
 Conc: 535.03 ng/ml



#2 3,5-DICHLOROBENZOIC ACID
 R.T.: 6.441 min
 Delta R.T.: 0.000 min
 Response: 582555554
 Conc: 463.06 ng/ml

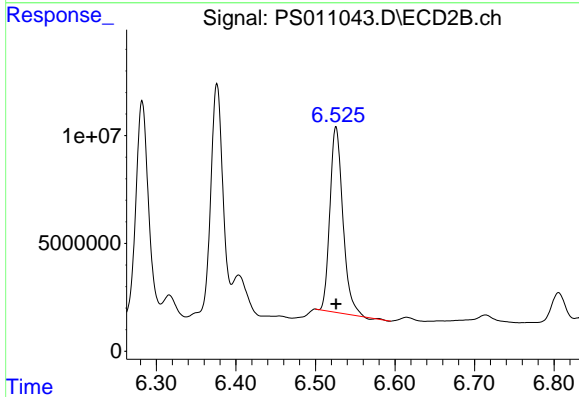


#2 3,5-DICHLOROBENZOIC ACID
 R.T.: 6.070 min
 Delta R.T.: 0.000 min
 Response: 366942259
 Conc: 440.60 ng/ml

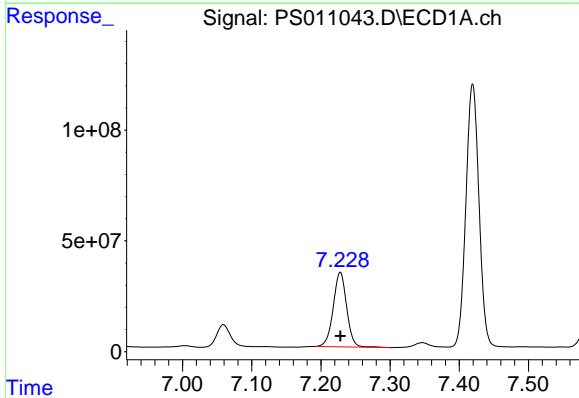


#3 4-Nitrophenol
 R.T.: 7.059 min
 Delta R.T.: 0.000 min
 Response: 139348707
 Conc: 349.09 ng/ml

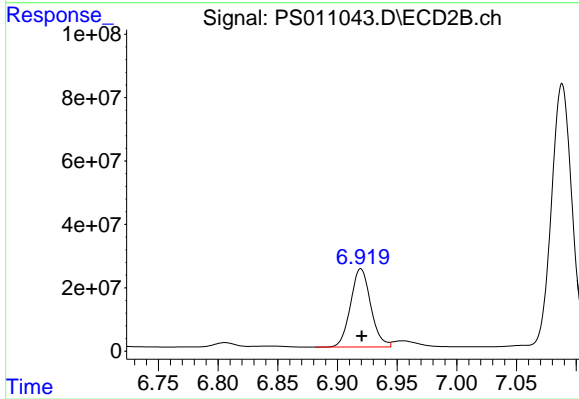
Instrument :
 ECD_S
 ClientSampleId :



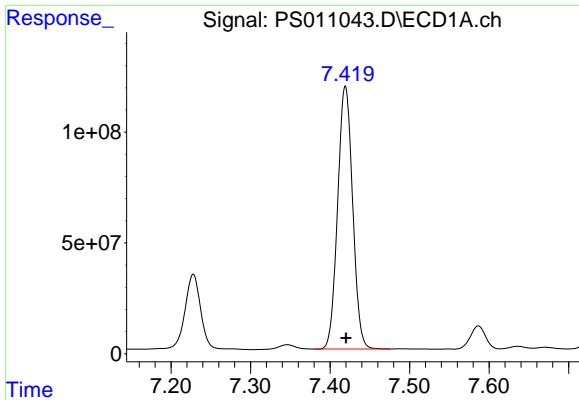
#3 4-Nitrophenol
 R.T.: 6.526 min
 Delta R.T.: 0.000 min
 Response: 97501098
 Conc: 303.43 ng/ml



#4 2,4-DCAA
 R.T.: 7.228 min
 Delta R.T.: 0.000 min
 Response: 453490942
 Conc: 500.09 ng/ml

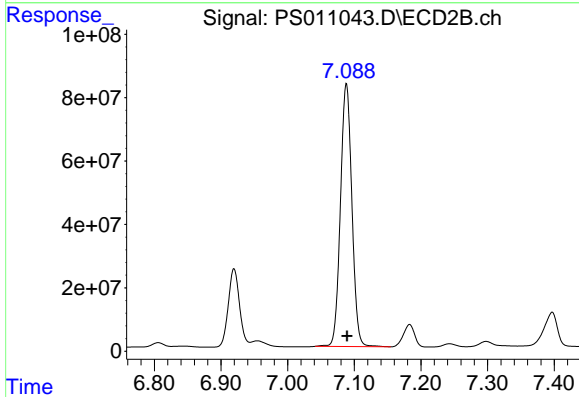


#4 2,4-DCAA
 R.T.: 6.920 min
 Delta R.T.: 0.000 min
 Response: 291453221
 Conc: 526.02 ng/ml

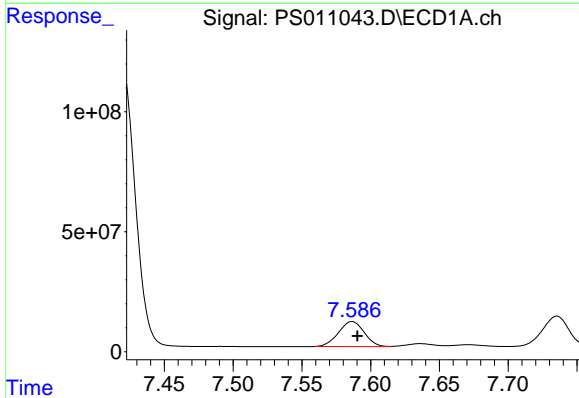


#5 DICAMBA
 R.T.: 7.419 min
 Delta R.T.: 0.000 min
 Response: 1554045515
 Conc: 426.20 ng/ml

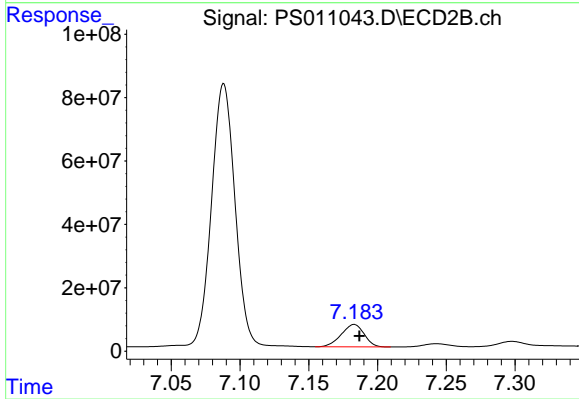
Instrument :
 ECD_S
 ClientSampleId :



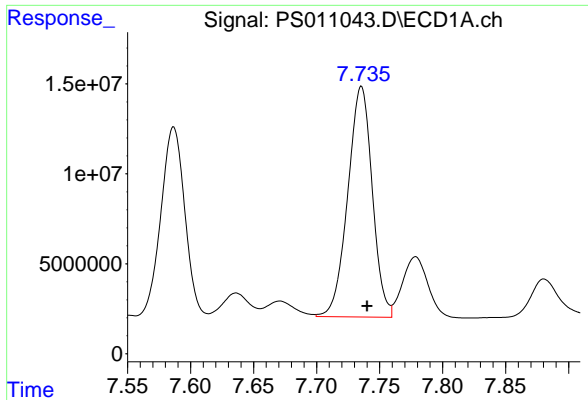
#5 DICAMBA
 R.T.: 7.088 min
 Delta R.T.: -0.001 min
 Response: 988982319
 Conc: 435.43 ng/ml



#6 MCPP
 R.T.: 7.587 min
 Delta R.T.: -0.004 min
 Response: 136359327
 Conc: 47.82 ug/ml

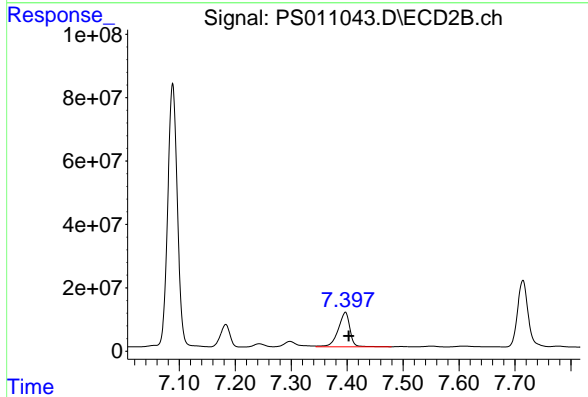


#6 MCPP
 R.T.: 7.183 min
 Delta R.T.: -0.004 min
 Response: 82209443
 Conc: 43.43 ug/ml

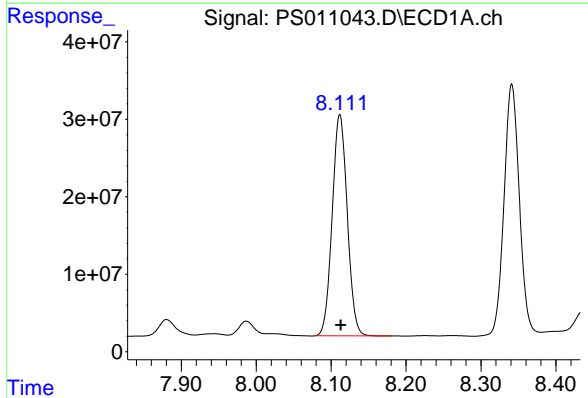


#7 MCPA
 R.T.: 7.735 min
 Delta R.T.: -0.005 min
 Response: 173237121
 Conc: 43.50 ug/ml

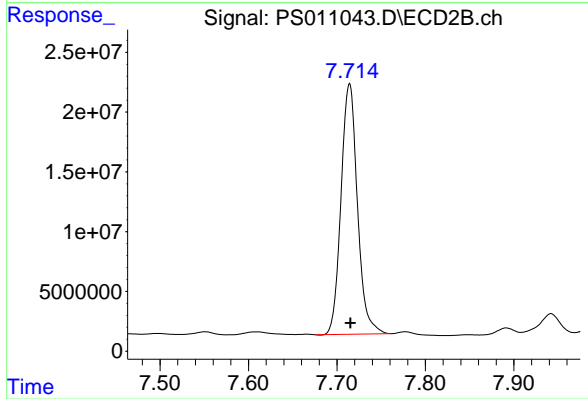
Instrument :
 ECD_S
 ClientSampleId :



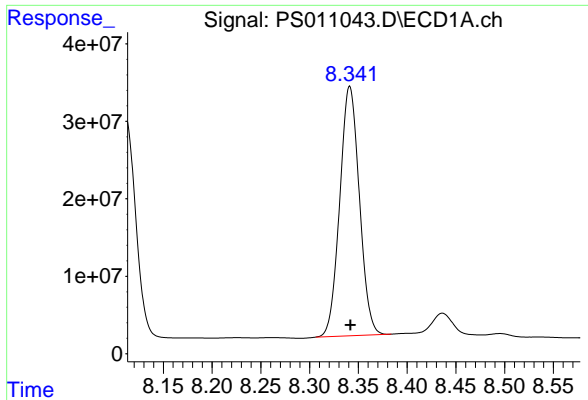
#7 MCPA
 R.T.: 7.397 min
 Delta R.T.: -0.006 min
 Response: 159528978
 Conc: 57.80 ug/ml



#8 DICHLORPROP
 R.T.: 8.112 min
 Delta R.T.: 0.000 min
 Response: 398898618
 Conc: 454.88 ng/ml



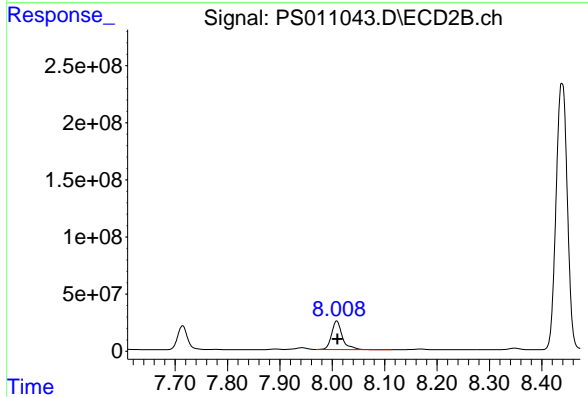
#8 DICHLORPROP
 R.T.: 7.714 min
 Delta R.T.: -0.001 min
 Response: 270439664
 Conc: 460.61 ng/ml



#9 2,4-D

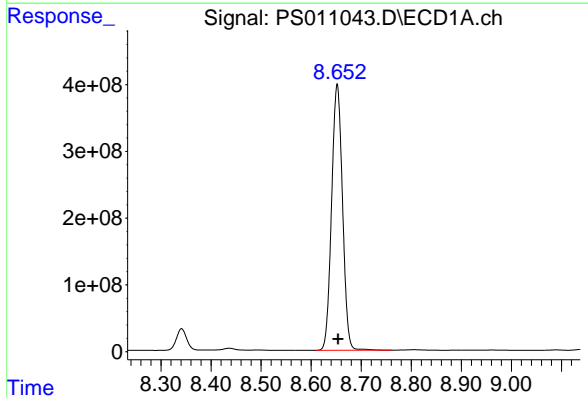
R.T.: 8.341 min
 Delta R.T.: 0.000 min
 Response: 451240347
 Conc: 510.28 ng/ml

Instrument :
 ECD_S
 ClientSampleId :



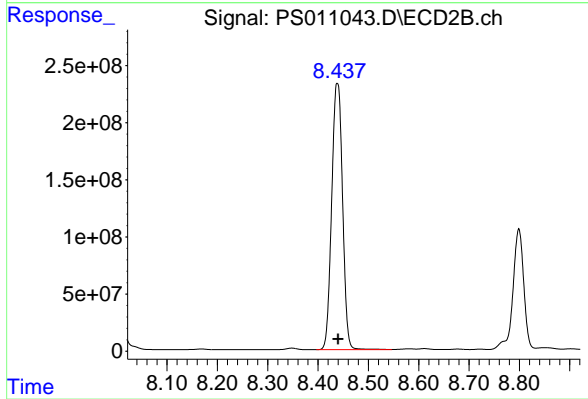
#9 2,4-D

R.T.: 8.008 min
 Delta R.T.: 0.000 min
 Response: 356969404
 Conc: 493.97 ng/ml



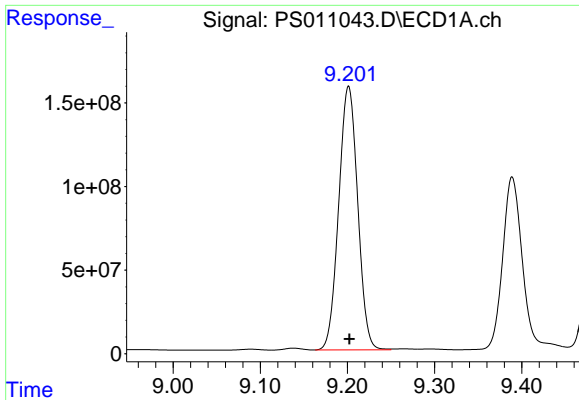
#10 Pentachlorophenol

R.T.: 8.652 min
 Delta R.T.: -0.002 min
 Response: 6022670585
 Conc: 484.36 ng/ml



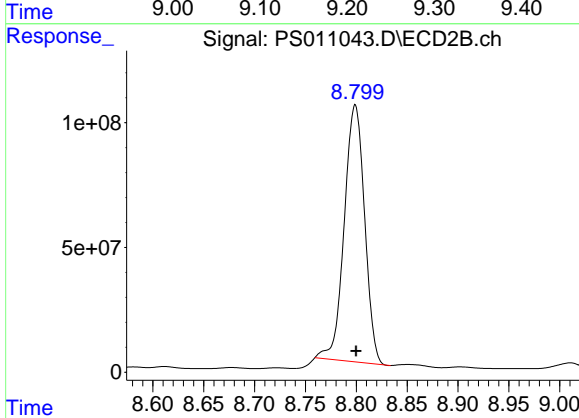
#10 Pentachlorophenol

R.T.: 8.439 min
 Delta R.T.: -0.002 min
 Response: 3499828741
 Conc: 503.31 ng/ml

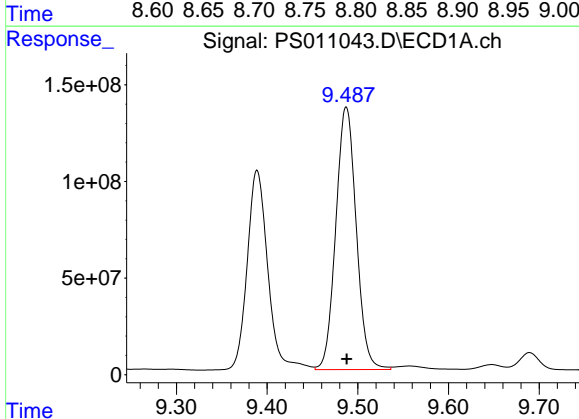


#11 2,4,5-TP (SILVEX)
 R.T.: 9.201 min
 Delta R.T.: 0.000 min
 Response: 2390298551
 Conc: 481.40 ng/ml

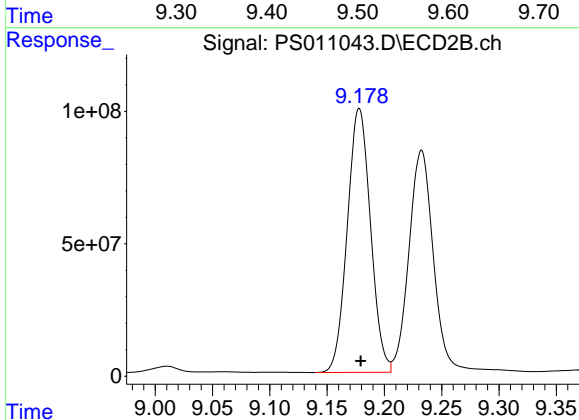
Instrument :
 ECD_S
 ClientSampleId :



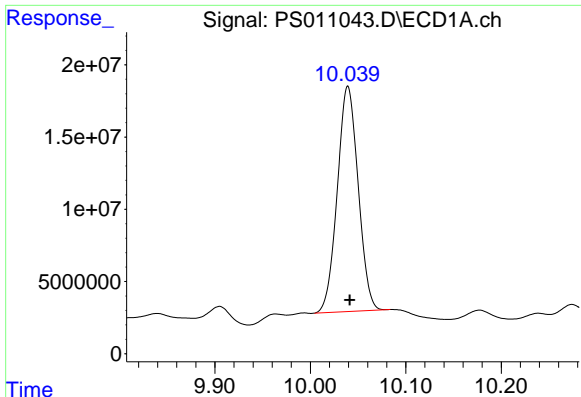
#11 2,4,5-TP (SILVEX)
 R.T.: 8.799 min
 Delta R.T.: -0.001 min
 Response: 1434327634
 Conc: 476.70 ng/ml



#12 2,4,5-T
 R.T.: 9.487 min
 Delta R.T.: 0.000 min
 Response: 2128032658
 Conc: 456.86 ng/ml



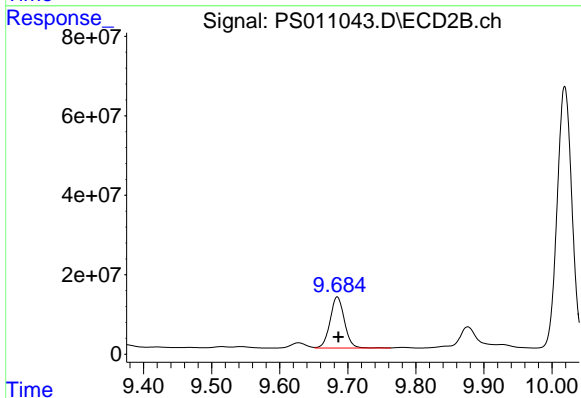
#12 2,4,5-T
 R.T.: 9.178 min
 Delta R.T.: -0.001 min
 Response: 1406765929
 Conc: 472.41 ng/ml



#13 2,4-DB

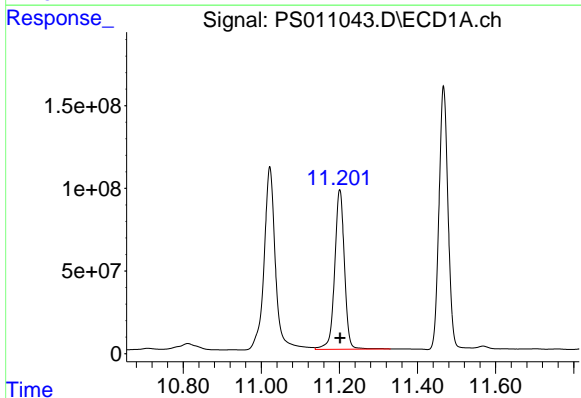
R.T.: 10.039 min
Delta R.T.: -0.002 min
Response: 236909747
Conc: 398.61 ng/ml

Instrument :
ECD_S
ClientSampled :



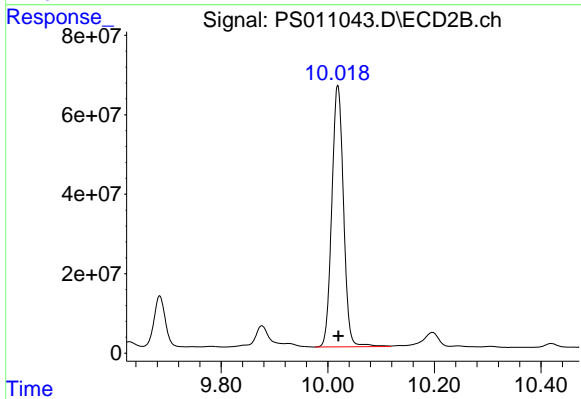
#13 2,4-DB

R.T.: 9.685 min
Delta R.T.: -0.002 min
Response: 188809584
Conc: 459.40 ng/ml



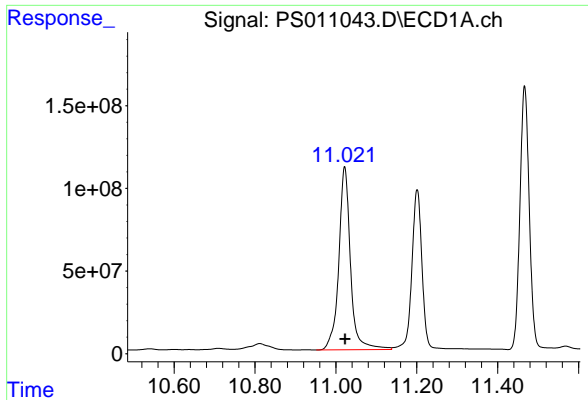
#14 DINOSEB

R.T.: 11.201 min
Delta R.T.: -0.001 min
Response: 1675228403
Conc: 467.75 ng/ml



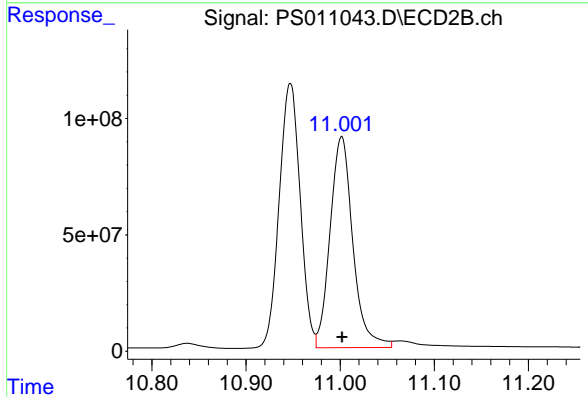
#14 DINOSEB

R.T.: 10.019 min
Delta R.T.: 0.000 min
Response: 1002434602
Conc: 481.45 ng/ml

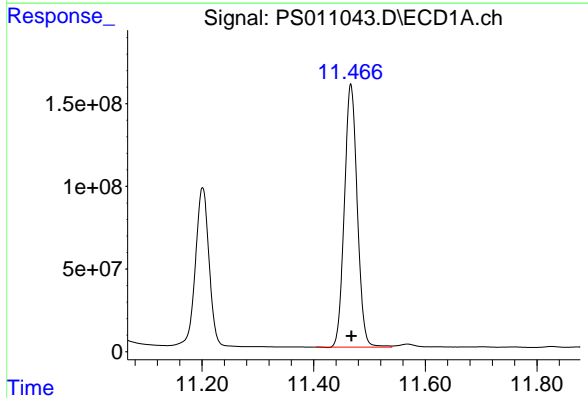


#15 Picloram
 R.T.: 11.022 min
 Delta R.T.: 0.000 min
 Response: 2232957652
 Conc: 398.31 ng/ml

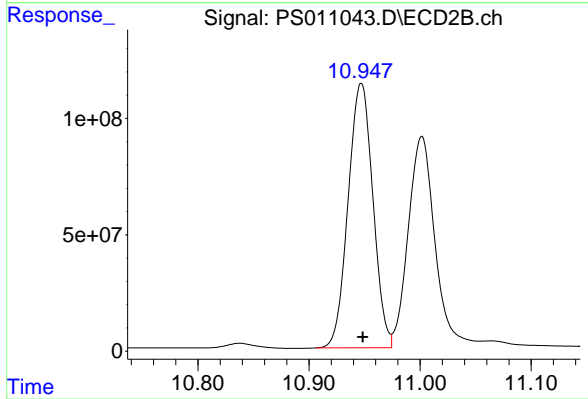
Instrument :
 ECD_S
 ClientSampled :



#15 Picloram
 R.T.: 11.001 min
 Delta R.T.: 0.000 min
 Response: 1523997520
 Conc: 363.76 ng/ml



#16 DCPA
 R.T.: 11.467 min
 Delta R.T.: -0.001 min
 Response: 2542655056
 Conc: 415.91 ng/ml



#16 DCPA
 R.T.: 10.947 min
 Delta R.T.: -0.002 min
 Response: 1761785930
 Conc: 473.04 ng/ml