

Data Path : Z:\pestpcbsrv\HPCHEM1\ECD\_S\Data\PS070120\  
 Data File : PS011050.D  
 Signal(s) : Signal #1: ECD1A.ch Signal #2: ECD2B.ch  
 Acq On : 02 Jul 2020 00:11  
 Operator : DD\AJ  
 Sample : L2815-20  
 Misc :  
 ALS Vial : 31 Sample Multiplier: 1

Instrument :  
 ECD\_S  
 ClientSampleId :

Integration File signal 1: autoint1.e  
 Integration File signal 2: autoint2.e  
 Quant Time: Jul 02 05:08:25 2020  
 Quant Method : Z:\pestpcbsrv\HPCHEM1\ECD\_S\Method\PS062420.M  
 Quant Title : 8080.M  
 QLast Update : Thu Jun 25 02:45:12 2020  
 Response via : Initial Calibration  
 Integrator: ChemStation

Volume Inj. : 2 µl  
 Signal #1 Phase : Rtx-CLPesticides Signal #2 Phase: Rtx-CLPesticides2  
 Signal #1 Info : 30M x 0.32mm x0.5 Signal #2 Info : 30M x 0.32mm x 0.25µm

	Compound	RT#1	RT#2	Resp#1	Resp#2	ng/ml	ng/ml
-----							
System Monitoring Compounds							
4) S	2,4-DCAA	7.229	6.920	257.6E6	203.7E6	284.021	367.556 #
Target Compounds							
1) T	Dalapon	2.996	2.586	42782736	116.5E6	38.208	154.485 #
2) T	3,5-DICHL...	0.000	6.100	0	73426165	N.D.	88.165
3) T	4-Nitroph...	6.995	6.552	7610172	64829758	19.065	201.752 #
5) T	DICAMBA	7.453	7.055	59441062	7724123	16.302	3.401 #
6) T	MCP P	7.582	0.000	7723490	0	2.709	N.D. #
7) T	MCPA	7.696	7.465	96237437	75566201	24.165	27.379
8) T	DICHLORPROP	8.061	7.741	49947468	5741589	56.957	9.779 #
9) T	2,4-D	0.000	7.987	0	10143199	N.D.	14.036
10) T	Pentachlo...	8.710	0.000	18441378	0	1.483	N.D. #
12) T	2,4,5-T	9.427	0.000	40082835	0	8.605	N.D. #
14) T	DINOSEB	0.000	10.065	0	18342025	N.D.	8.809
15) T	Picloram	10.998	0.000	13713559	0	2.446	N.D. #

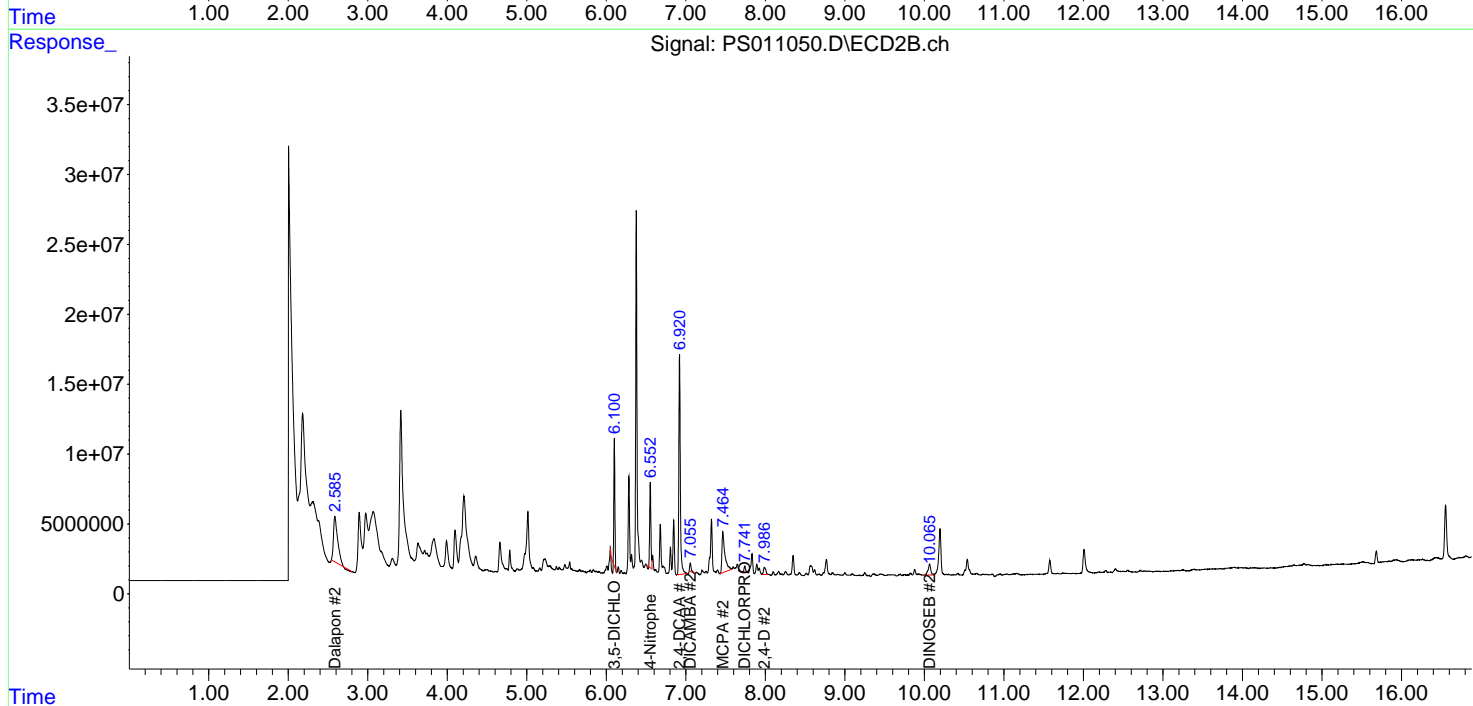
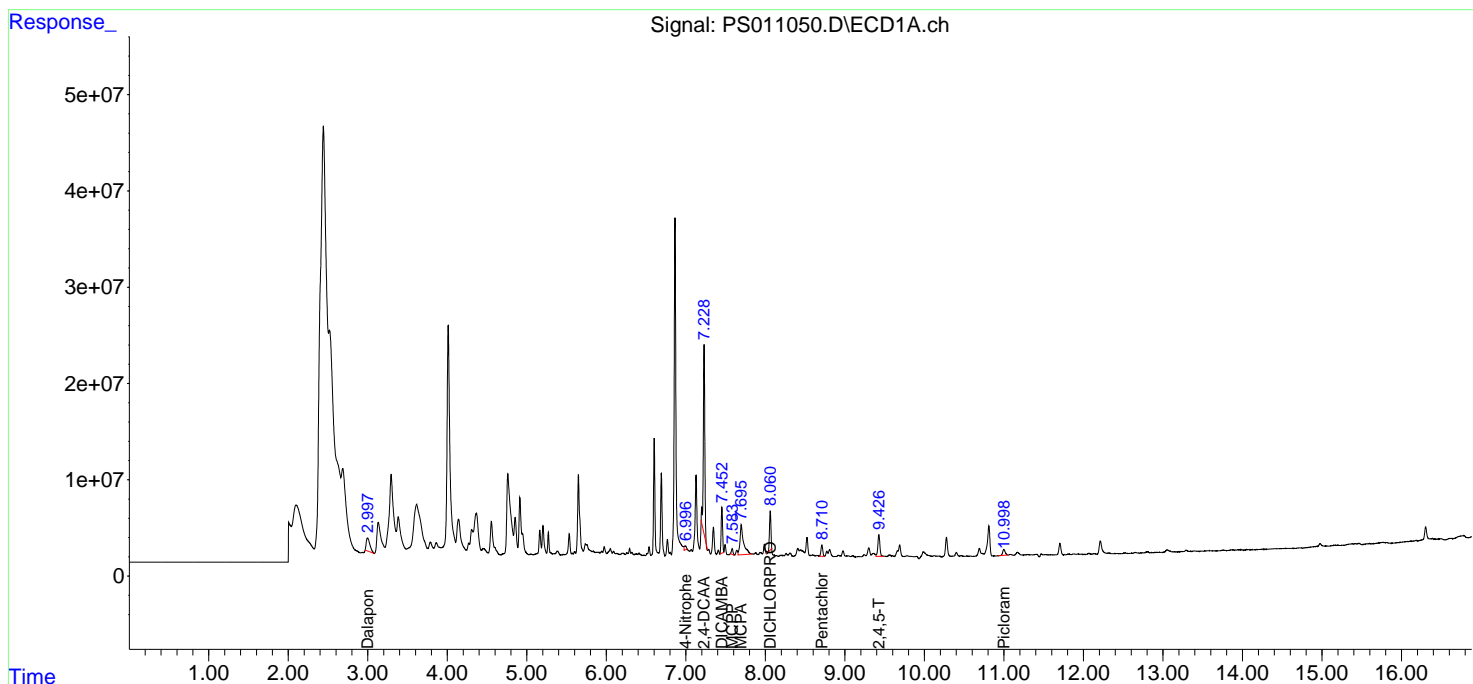
(f)=RT Delta > 1/2 Window (#)=Amounts differ by > 25% (m)=manual int.

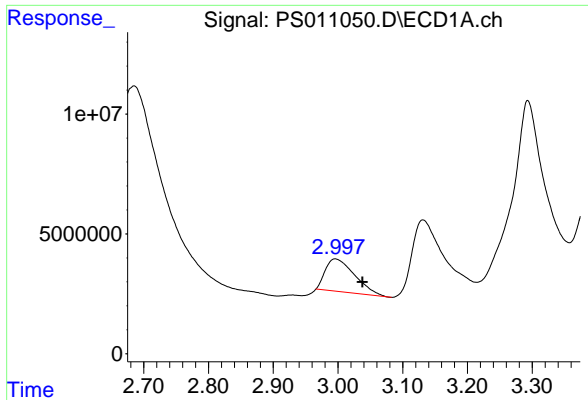
Data Path : Z:\pestpcbsrv\HPCHEM1\ECD\_S\Data\PS070120\  
 Data File : PS011050.D  
 Signal(s) : Signal #1: ECD1A.ch Signal #2: ECD2B.ch  
 Acq On : 02 Jul 2020 00:11  
 Operator : DD\AJ  
 Sample : L2815-20  
 Misc :  
 ALS Vial : 31 Sample Multiplier: 1

Instrument :  
 ECD\_S  
 ClientSampled :

Integration File signal 1: autoint1.e  
 Integration File signal 2: autoint2.e  
 Quant Time: Jul 02 05:08:25 2020  
 Quant Method : Z:\pestpcbsrv\HPCHEM1\ECD\_S\Method\PS062420.M  
 Quant Title : 8080.M  
 QLast Update : Thu Jun 25 02:45:12 2020  
 Response via : Initial Calibration  
 Integrator: ChemStation

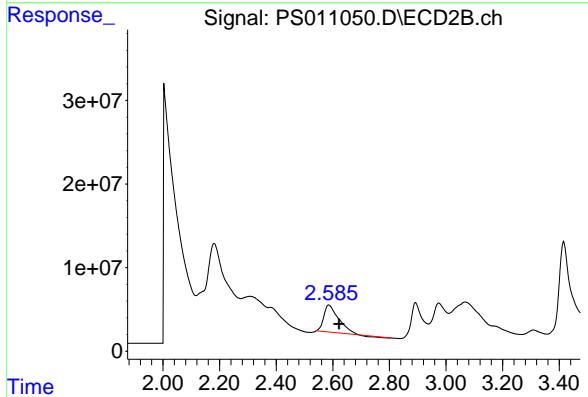
Volume Inj. : 2 µl  
 Signal #1 Phase : Rtx-CLPesticides Signal #2 Phase: Rtx-CLPesticides2  
 Signal #1 Info : 30M x 0.32mm x0.5 Signal #2 Info : 30M x 0.32mm x 0.25µm



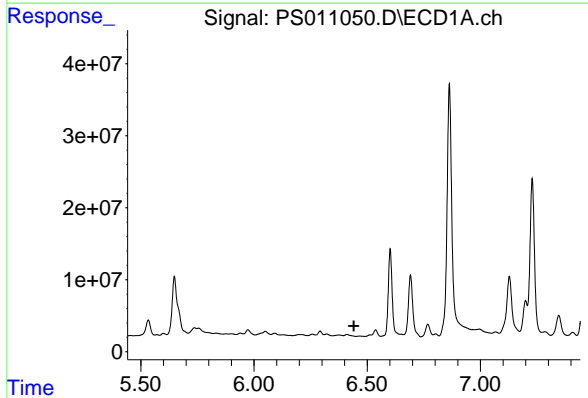


#1 Dalapon  
 R.T.: 2.996 min  
 Delta R.T.: -0.042 min  
 Response: 42782736  
 Conc: 38.21 ng/ml

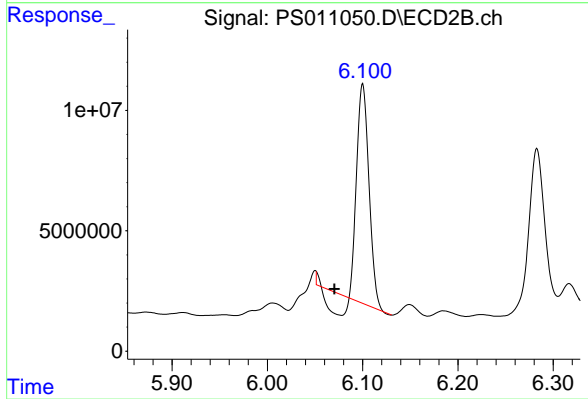
Instrument :  
 ECD\_S  
 ClientSampleId :



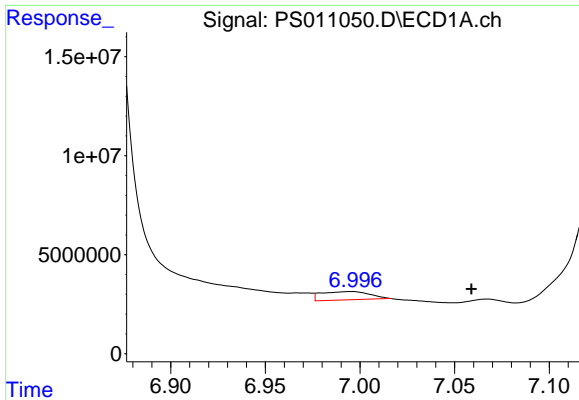
#1 Dalapon  
 R.T.: 2.586 min  
 Delta R.T.: -0.036 min  
 Response: 116537275  
 Conc: 154.48 ng/ml



#2 3,5-DICHLOROBENZOIC ACID  
 R.T.: 0.000 min  
 Exp R.T. : 6.441 min  
 Response: 0  
 Conc: N.D.

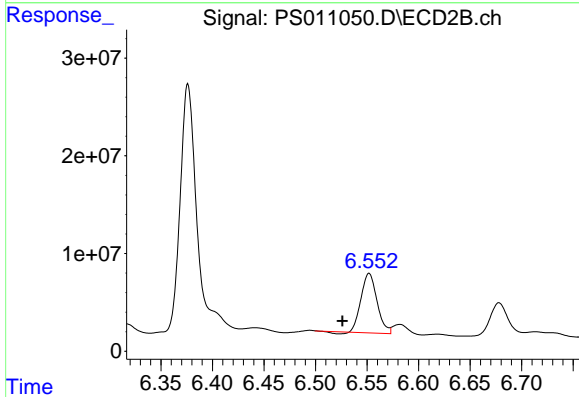


#2 3,5-DICHLOROBENZOIC ACID  
 R.T.: 6.100 min  
 Delta R.T.: 0.030 min  
 Response: 73426165  
 Conc: 88.17 ng/ml

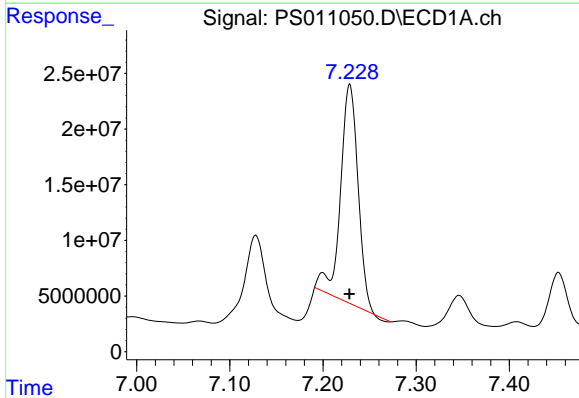


#3 4-Nitrophenol  
 R.T.: 6.995 min  
 Delta R.T.: -0.064 min  
 Response: 7610172  
 Conc: 19.06 ng/ml

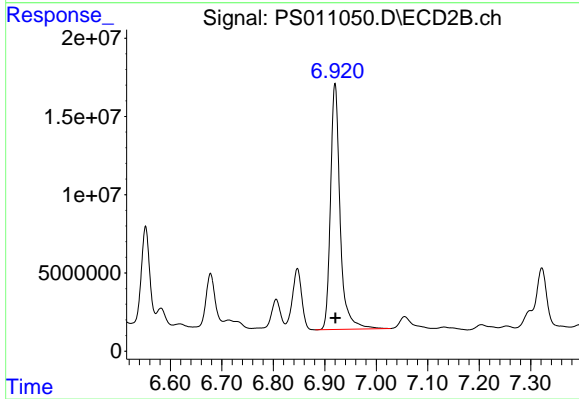
Instrument :  
 ECD\_S  
 ClientSampled :



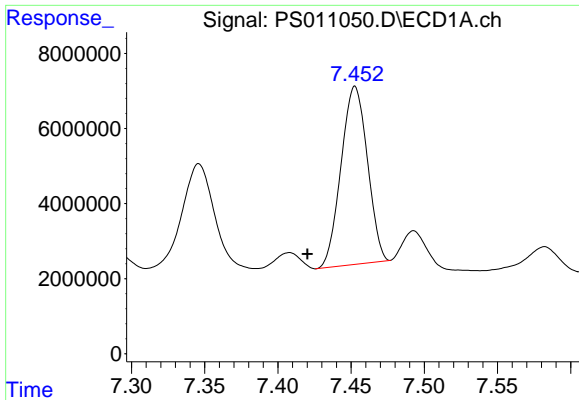
#3 4-Nitrophenol  
 R.T.: 6.552 min  
 Delta R.T.: 0.026 min  
 Response: 64829758  
 Conc: 201.75 ng/ml



#4 2,4-DCAA  
 R.T.: 7.229 min  
 Delta R.T.: 0.000 min  
 Response: 257555288  
 Conc: 284.02 ng/ml

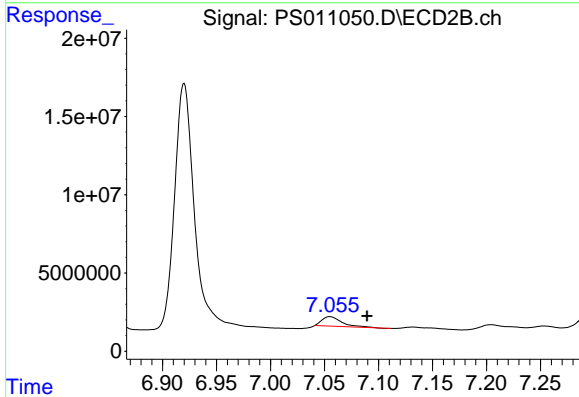


#4 2,4-DCAA  
 R.T.: 6.920 min  
 Delta R.T.: 0.000 min  
 Response: 203654209  
 Conc: 367.56 ng/ml

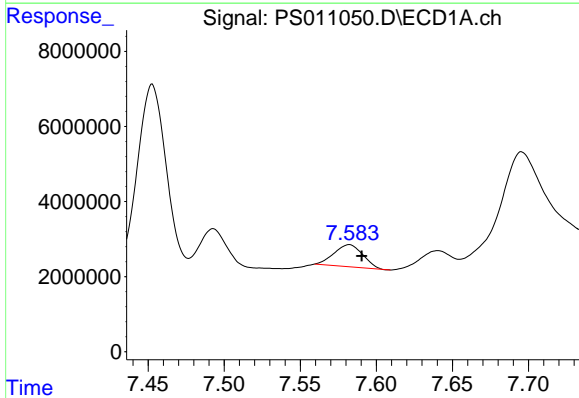


#5 DICAMBA  
 R.T.: 7.453 min  
 Delta R.T.: 0.032 min  
 Response: 59441062  
 Conc: 16.30 ng/ml

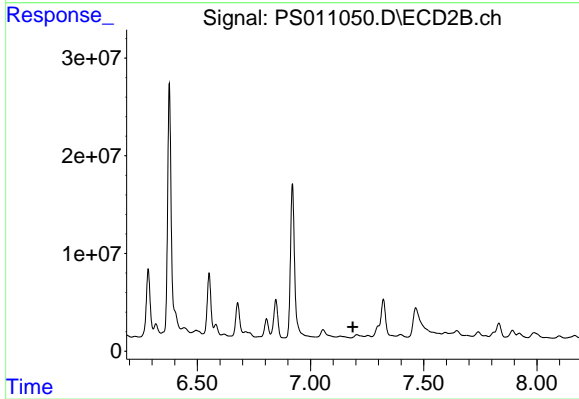
Instrument :  
 ECD\_S  
 ClientSampleId :



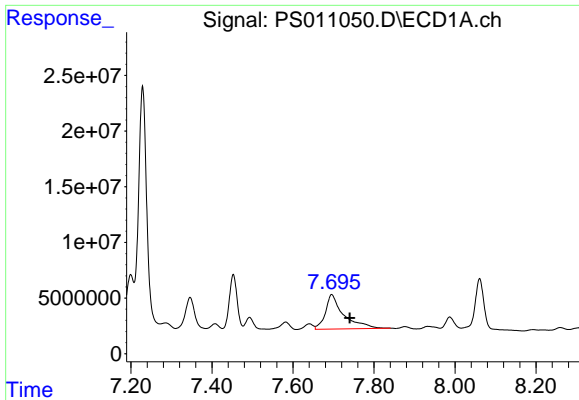
#5 DICAMBA  
 R.T.: 7.055 min  
 Delta R.T.: -0.034 min  
 Response: 7724123  
 Conc: 3.40 ng/ml



#6 MCP  
 R.T.: 7.582 min  
 Delta R.T.: -0.008 min  
 Response: 7723490  
 Conc: 2.71 ug/ml



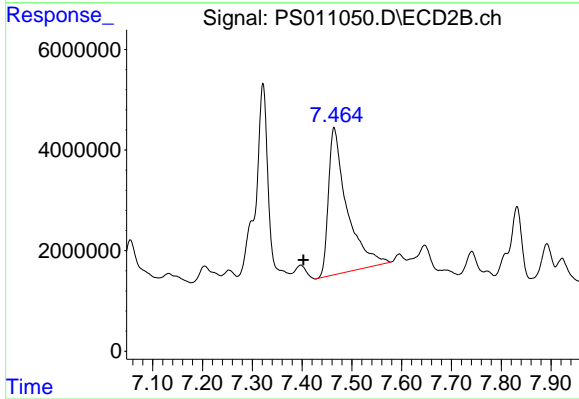
#6 MCP  
 R.T.: 0.000 min  
 Exp R.T. : 7.187 min  
 Response: 0  
 Conc: N.D.



#7 MCPA

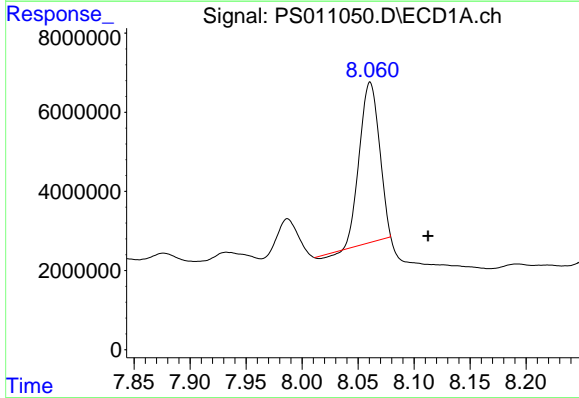
R.T.: 7.696 min  
 Delta R.T.: -0.044 min  
 Response: 96237437  
 Conc: 24.17 ug/ml

Instrument :  
 ECD\_S  
 ClientSampled :



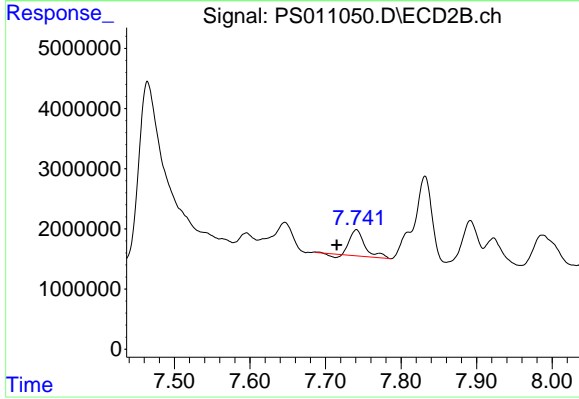
#7 MCPA

R.T.: 7.465 min  
 Delta R.T.: 0.062 min  
 Response: 75566201  
 Conc: 27.38 ug/ml



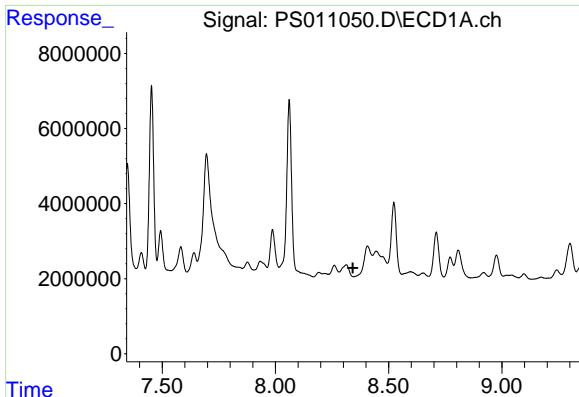
#8 DICHLORPROP

R.T.: 8.061 min  
 Delta R.T.: -0.052 min  
 Response: 49947468  
 Conc: 56.96 ng/ml



#8 DICHLORPROP

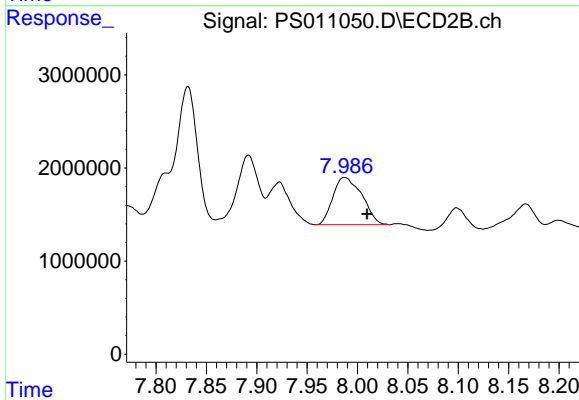
R.T.: 7.741 min  
 Delta R.T.: 0.026 min  
 Response: 5741589  
 Conc: 9.78 ng/ml



#9 2,4-D

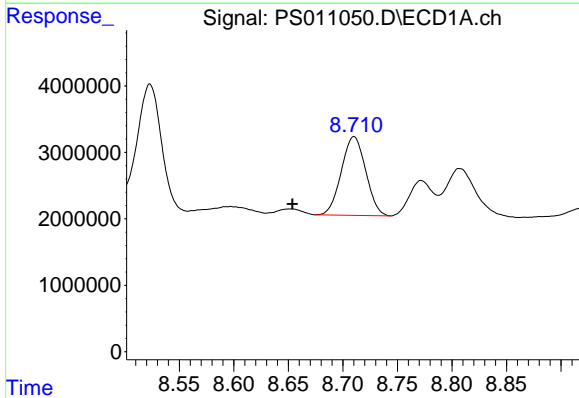
R.T.: 0.000 min  
 Exp R.T. : 8.342 min  
 Response: 0  
 Conc: N.D.

Instrument :  
 ECD\_S  
 ClientSampleId :



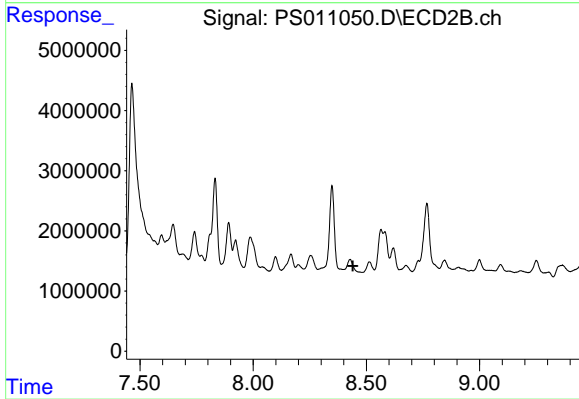
#9 2,4-D

R.T.: 7.987 min  
 Delta R.T.: -0.022 min  
 Response: 10143199  
 Conc: 14.04 ng/ml



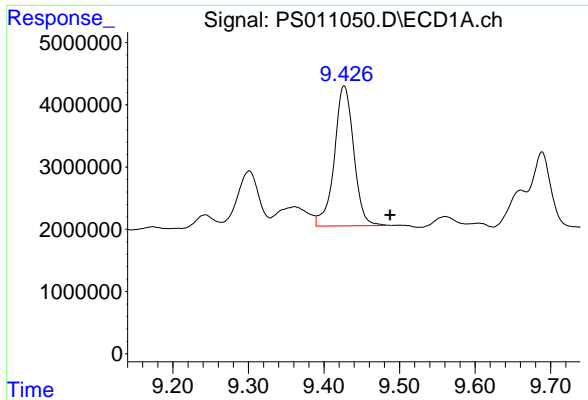
#10 Pentachlorophenol

R.T.: 8.710 min  
 Delta R.T.: 0.056 min  
 Response: 18441378  
 Conc: 1.48 ng/ml



#10 Pentachlorophenol

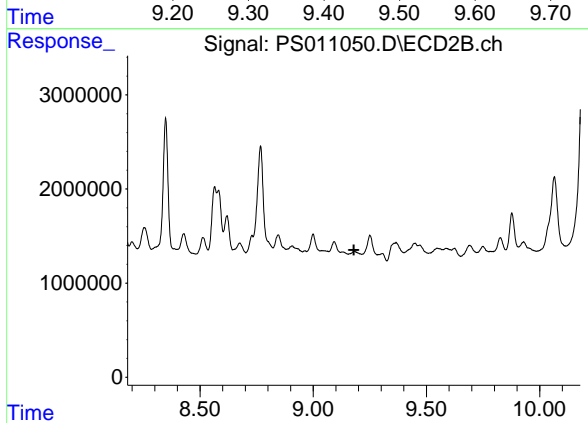
R.T.: 0.000 min  
 Exp R.T. : 8.440 min  
 Response: 0  
 Conc: N.D.



#12 2,4,5-T

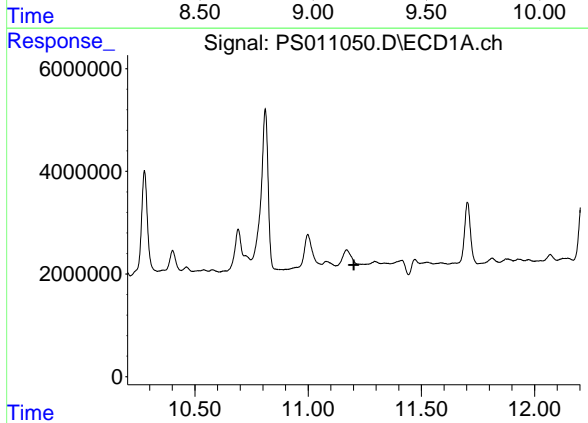
R.T.: 9.427 min  
 Delta R.T.: -0.061 min  
 Response: 40082835  
 Conc: 8.61 ng/ml

Instrument :  
 ECD\_S  
 ClientSampled :



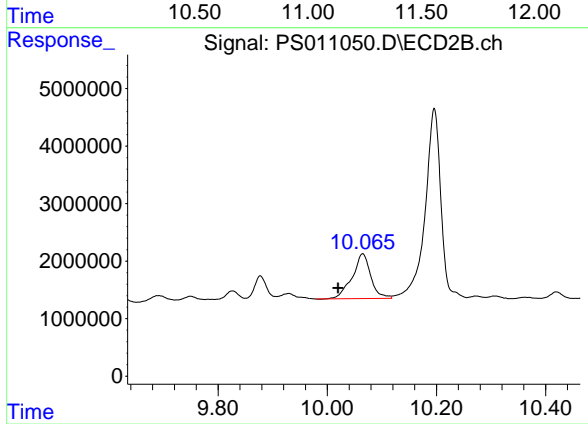
#12 2,4,5-T

R.T.: 0.000 min  
 Exp R.T. : 9.179 min  
 Response: 0  
 Conc: N.D.



#14 DINOSEB

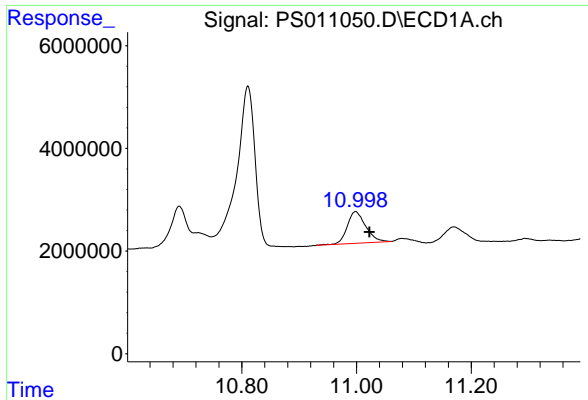
R.T.: 0.000 min  
 Exp R.T. : 11.202 min  
 Response: 0  
 Conc: N.D.



#14 DINOSEB

R.T.: 10.065 min  
 Delta R.T.: 0.045 min  
 Response: 18342025  
 Conc: 8.81 ng/ml

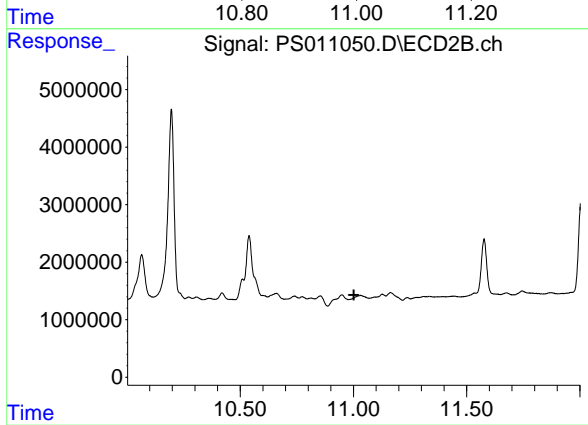




#15 Picloram

R.T.: 10.998 min  
Delta R.T.: -0.024 min  
Response: 13713559  
Conc: 2.45 ng/ml

Instrument :  
ECD\_S  
ClientSampled :



#15 Picloram

R.T.: 0.000 min  
Exp R.T. : 11.002 min  
Response: 0  
Conc: N.D.