

Data Path : Z:\pestpcbsrv\HPCHEM1\ECD_S\Data\PS070122\
 Data File : PS019869.D
 Signal(s) : Signal #1: ECD1A.ch Signal #2: ECD2B.ch
 Acq On : 01 Jul 2022 19:26
 Operator : AJ\MA
 Sample : HSTDCCC750
 Misc :
 ALS Vial : 3 Sample Multiplier: 1

Instrument :
 ECD_S
 ClientSampleId :

Integration File signal 1: autoint1.e
 Integration File signal 2: autoint2.e
 Quant Time: Jul 12 05:37:35 2022
 Quant Method : Z:\pestpcbsrv\HPCHEM1\ECD_S\Method\PS062722.M
 Quant Title : 8080.M
 QLast Update : Mon Jun 27 17:26:48 2022
 Response via : Initial Calibration
 Integrator: ChemStation

Volume Inj. : 2 µl
 Signal #1 Phase : Rtx-CLPesticides Signal #2 Phase: Rtx-CLPesticides2
 Signal #1 Info : 30M x 0.32mm x0.5 Signal #2 Info : 30M x 0.32mm x 0.25µm

	Compound	RT#1	RT#2	Resp#1	Resp#2	ng/ml	ng/ml

System Monitoring Compounds							
4) S	2,4-DCAA	7.194	6.779	1957.4E6	599.6E6	754.696	738.351
Target Compounds							
1) T	Dalapon	3.014	2.525	3468.6E6	706.4E6	715.579	665.566
2) T	3,5-DICHL...	6.408	5.960	2408.9E6	876.8E6	703.251	686.113
3) T	4-Nitroph...	7.027	6.399	786.0E6	301.1E6	738.432	696.191
5) T	DICAMBA	7.382	6.942	7342.1E6	2543.4E6	715.536	697.214
6) T	MCP P	7.552	7.040	573.5E6	198.3E6	71.480	69.077
7) T	MCPA	7.700	7.252	822.4E6	274.1E6	70.184	67.730
8) T	DICHLORPROP	8.072	7.562	1932.8E6	646.3E6	713.870	687.028
9) T	2,4-D	8.304	7.855	2172.7E6	775.5E6	731.524	688.317
10) T	Pentachlo...	8.609	8.279	26445.2E6	8672.0E6	732.289	702.346
11) T	2,4,5-TP ...	9.159	8.640	11541.4E6	3737.8E6	721.536	705.291
12) T	2,4,5-T	9.446	9.018	12196.3E6	3480.9E6	662.841	712.523
13) T	2,4-DB	9.998	9.523	2690.8E6	454.7E6	672.424	700.172
14) T	DINOSEB	11.149	9.847	11377.3E6	2598.3E6	699.813	728.995
15) T	Picloram	10.978	10.831	19806.7E6	4204.3E6	635.180	646.451
16) T	DCPA	11.418	10.775	17930.6E6	4584.1E6	695.062	707.328

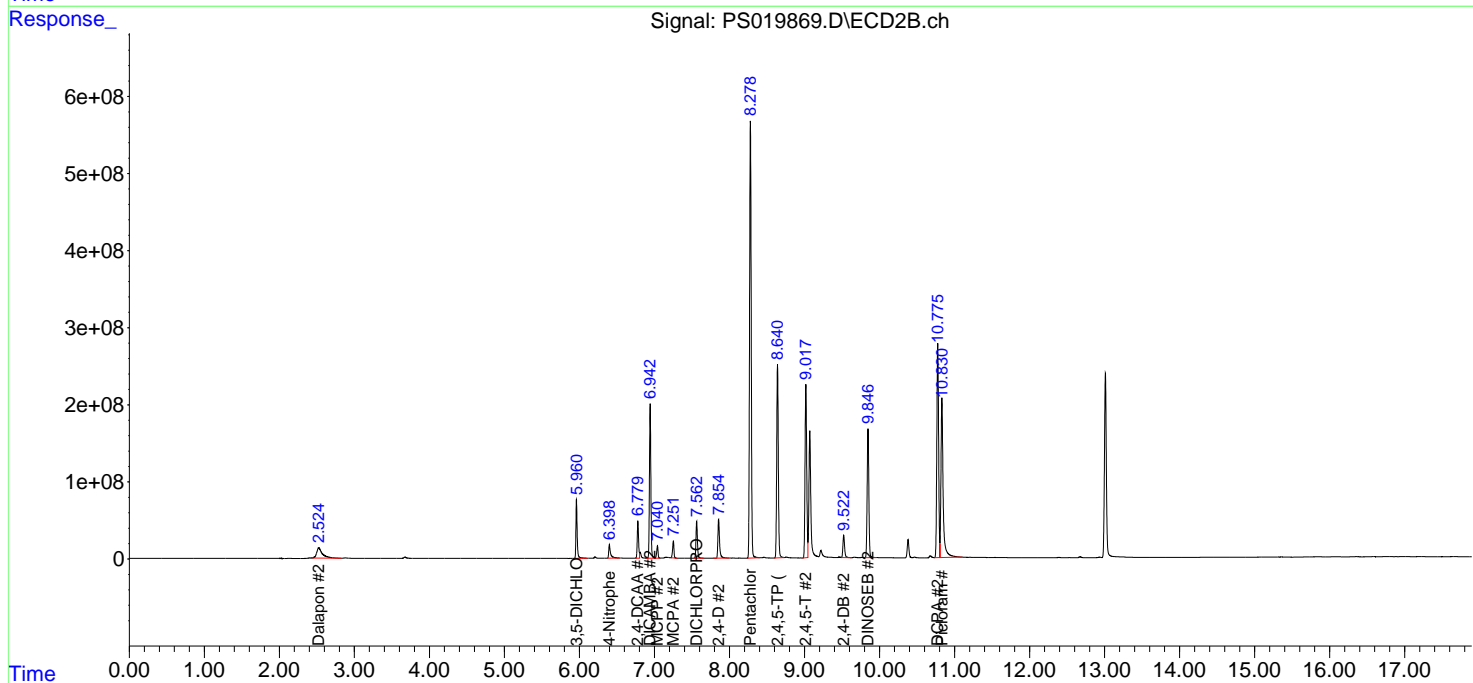
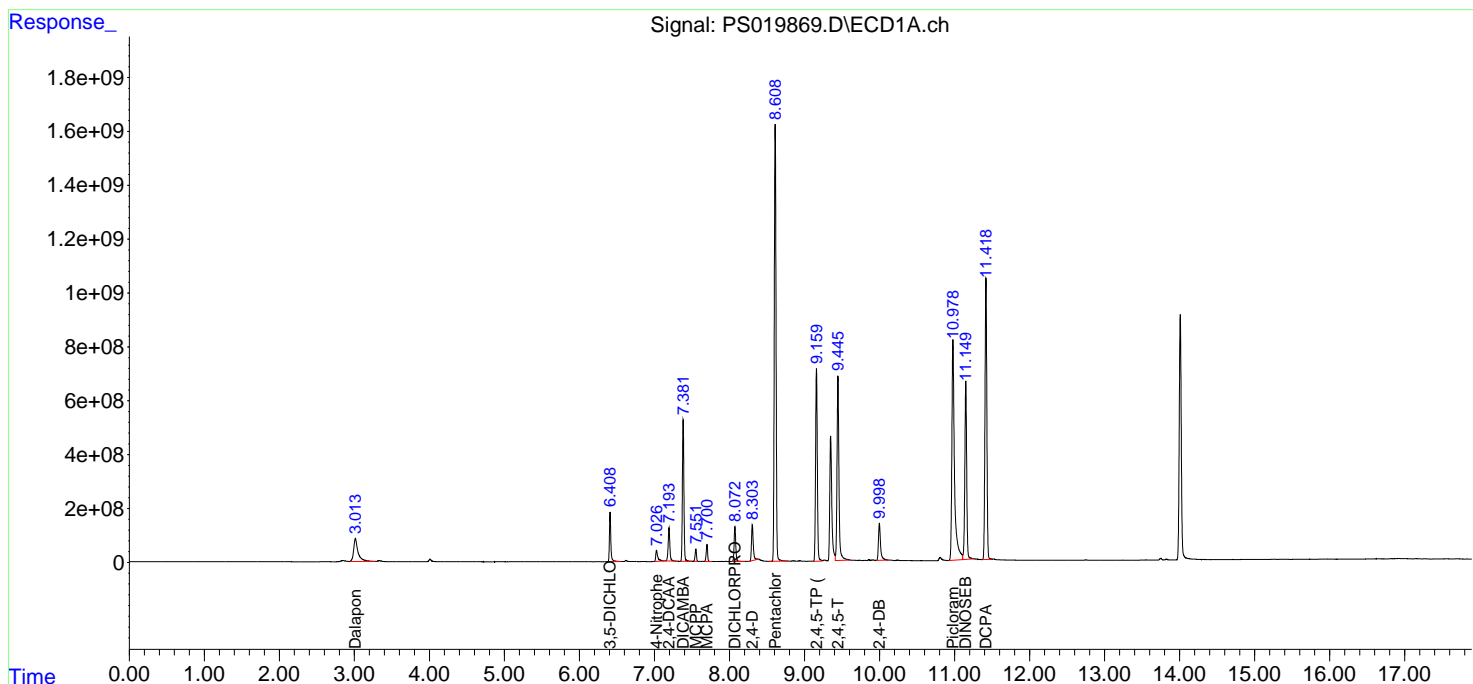
(f)=RT Delta > 1/2 Window (#)=Amounts differ by > 25% (m)=manual int.

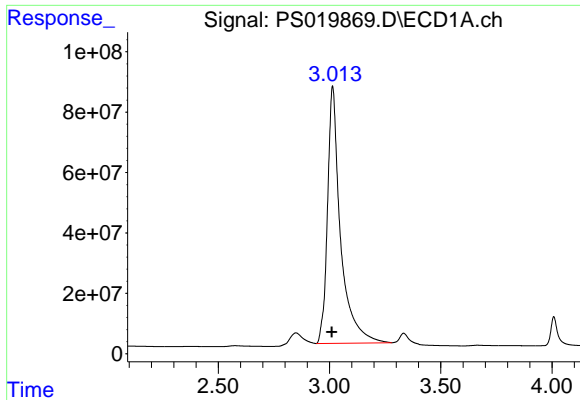
Data Path : Z:\pestpcbsrv\HPCHEM1\ECD_S\Data\PS070122\
 Data File : PS019869.D
 Signal(s) : Signal #1: ECD1A.ch Signal #2: ECD2B.ch
 Acq On : 01 Jul 2022 19:26
 Operator : AJ\MA
 Sample : HSTDCCC750
 Misc :
 ALS Vial : 3 Sample Multiplier: 1

Instrument :
 ECD_S
 ClientSampleId :

Integration File signal 1: autoint1.e
 Integration File signal 2: autoint2.e
 Quant Time: Jul 12 05:37:35 2022
 Quant Method : Z:\pestpcbsrv\HPCHEM1\ECD_S\Method\PS062722.M
 Quant Title : 8080.M
 QLast Update : Mon Jun 27 17:26:48 2022
 Response via : Initial Calibration
 Integrator: ChemStation

Volume Inj. : 2 µl
 Signal #1 Phase : Rtx-CLPesticides Signal #2 Phase: Rtx-CLPesticides2
 Signal #1 Info : 30M x 0.32mm x0.5 Signal #2 Info : 30M x 0.32mm x 0.25µm

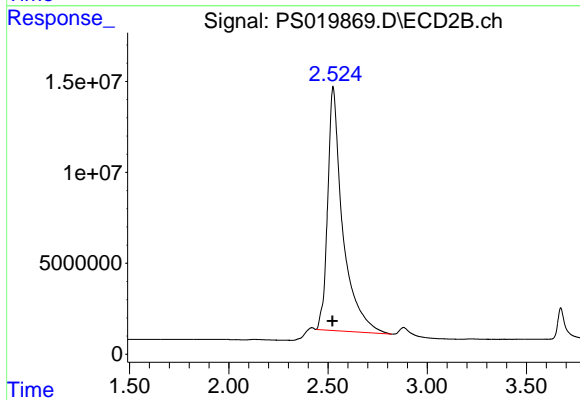




#1 Dalapon

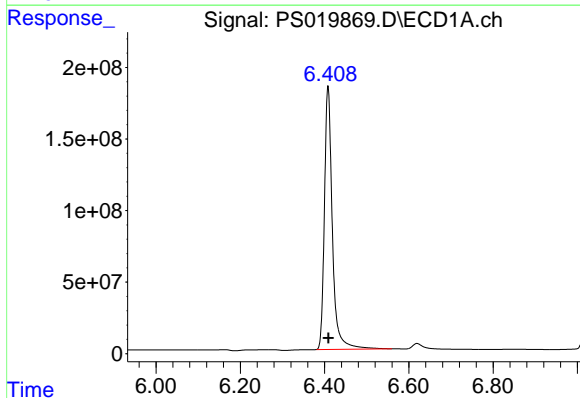
R.T.: 3.014 min
 Delta R.T.: 0.004 min
 Response: 3468565308
 Conc: 715.58 ng/ml

Instrument :
 ECD_S
 ClientSampleId :



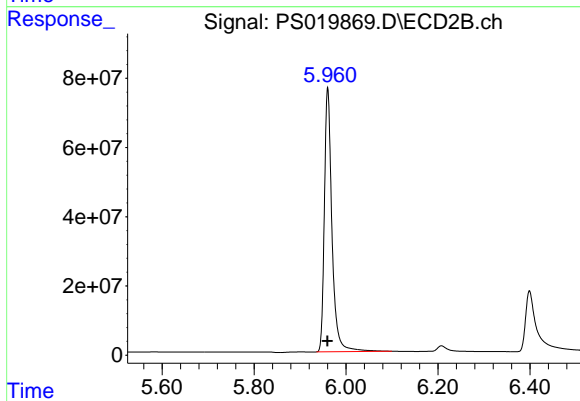
#1 Dalapon

R.T.: 2.525 min
 Delta R.T.: 0.003 min
 Response: 706400750
 Conc: 665.57 ng/ml



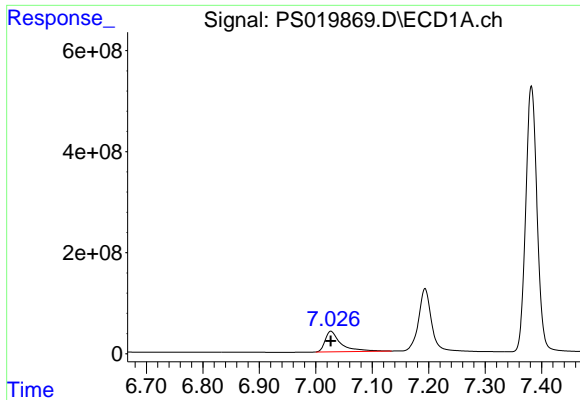
#2 3,5-DICHLOROBENZOIC ACID

R.T.: 6.408 min
 Delta R.T.: 0.000 min
 Response: 2408904586
 Conc: 703.25 ng/ml



#2 3,5-DICHLOROBENZOIC ACID

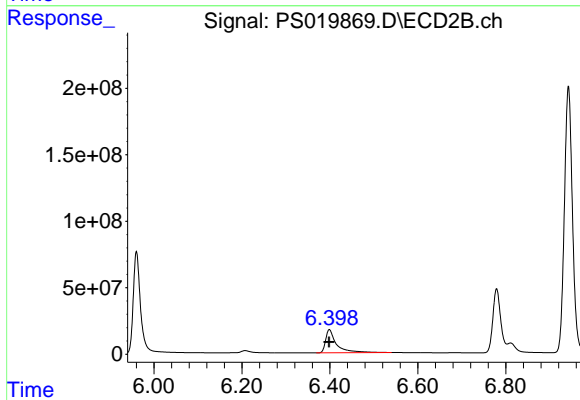
R.T.: 5.960 min
 Delta R.T.: 0.000 min
 Response: 876759493
 Conc: 686.11 ng/ml



#3 4-Nitrophenol

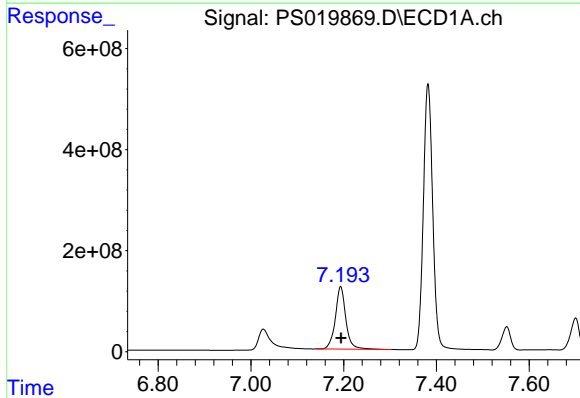
R.T.: 7.027 min
Delta R.T.: 0.000 min
Response: 785968323
Conc: 738.43 ng/ml

Instrument :
ECD_S
ClientSampleId :



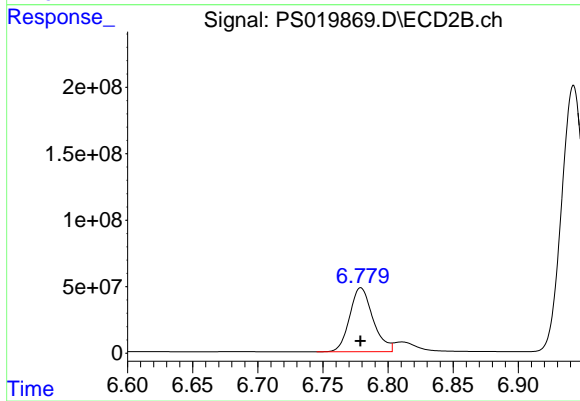
#3 4-Nitrophenol

R.T.: 6.399 min
Delta R.T.: 0.000 min
Response: 301112591
Conc: 696.19 ng/ml



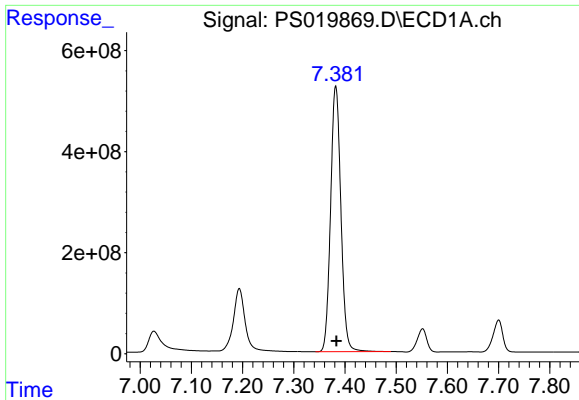
#4 2,4-DCAA

R.T.: 7.194 min
Delta R.T.: 0.000 min
Response: 1957417606
Conc: 754.70 ng/ml



#4 2,4-DCAA

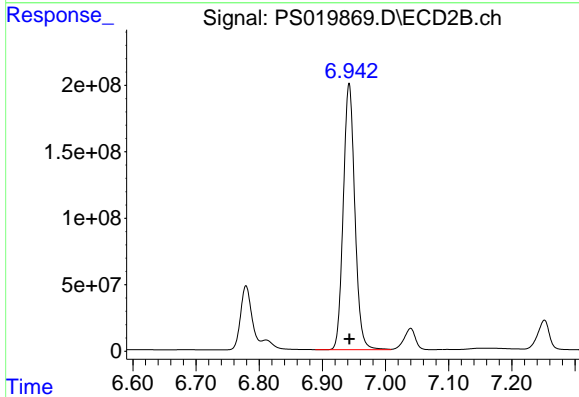
R.T.: 6.779 min
Delta R.T.: 0.000 min
Response: 599648681
Conc: 738.35 ng/ml



#5 DICAMBA

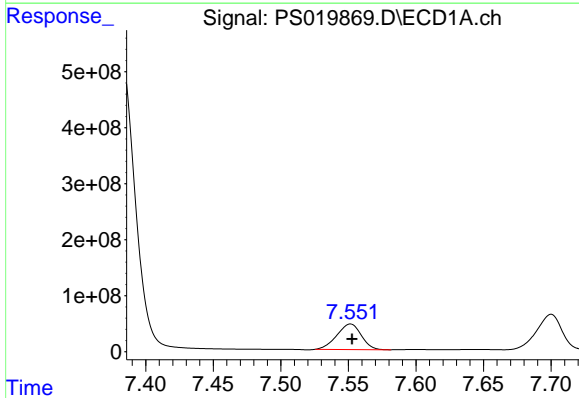
R.T.: 7.382 min
 Delta R.T.: -0.001 min
 Response: 7342134915
 Conc: 715.54 ng/ml

Instrument :
 ECD_S
 ClientSampleId :



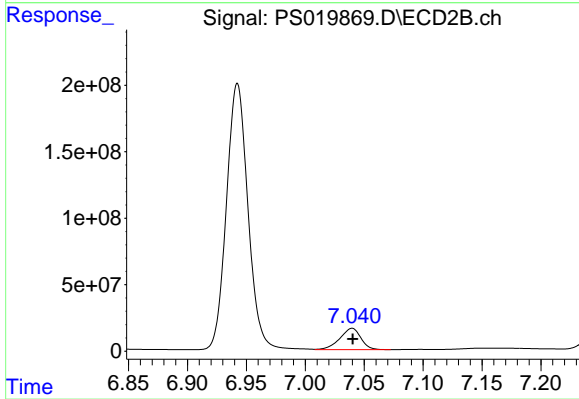
#5 DICAMBA

R.T.: 6.942 min
 Delta R.T.: 0.000 min
 Response: 2543416701
 Conc: 697.21 ng/ml



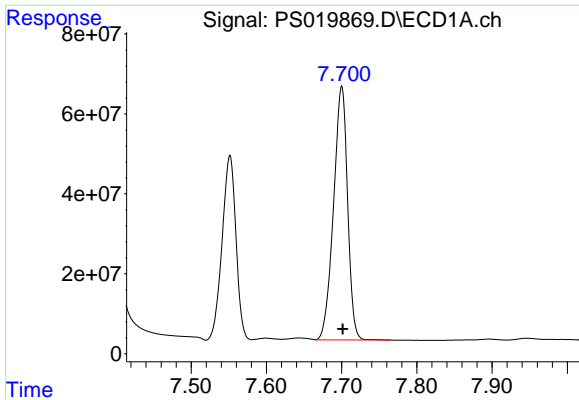
#6 MCP

R.T.: 7.552 min
 Delta R.T.: 0.000 min
 Response: 573480441
 Conc: 71.48 ug/ml



#6 MCP

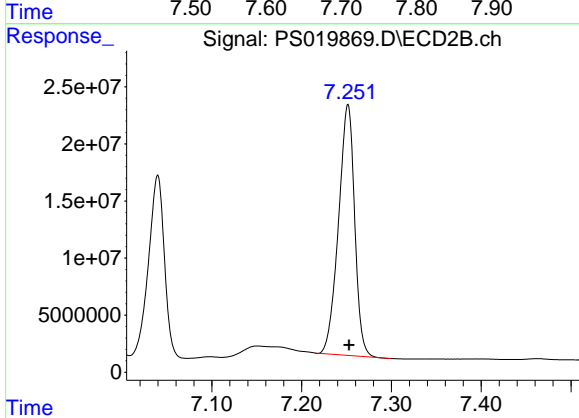
R.T.: 7.040 min
 Delta R.T.: 0.000 min
 Response: 198280780
 Conc: 69.08 ug/ml



#7 MCPA

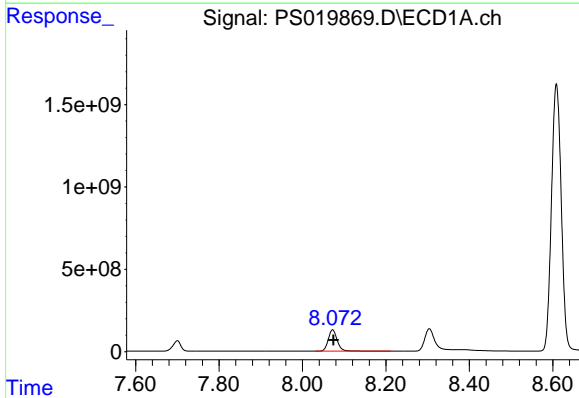
R.T.: 7.700 min
 Delta R.T.: -0.001 min
 Response: 822410341
 Conc: 70.18 ug/ml

Instrument :
 ECD_S
 ClientSampleId :



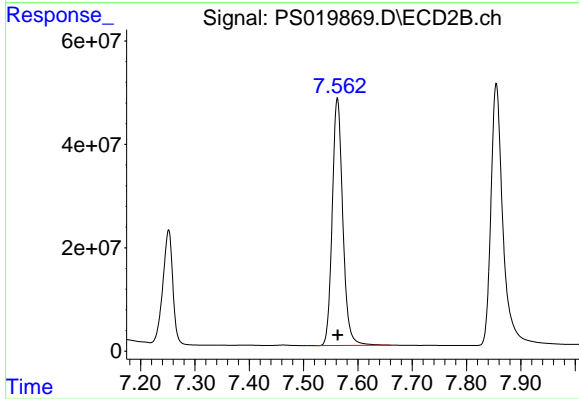
#7 MCPA

R.T.: 7.252 min
 Delta R.T.: -0.001 min
 Response: 274143693
 Conc: 67.73 ug/ml



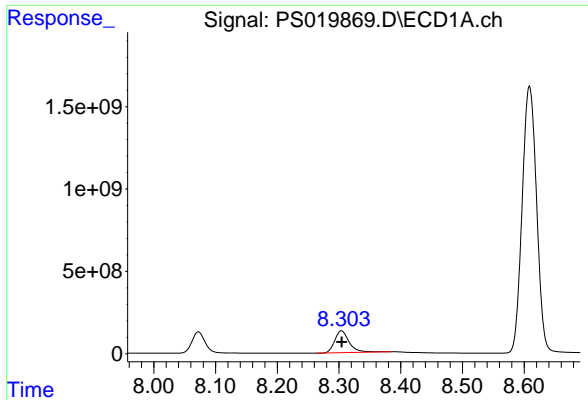
#8 DICHLORPROP

R.T.: 8.072 min
 Delta R.T.: -0.002 min
 Response: 1932795826
 Conc: 713.87 ng/ml



#8 DICHLORPROP

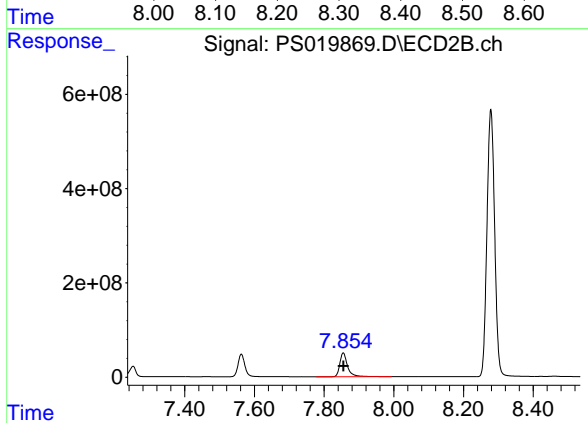
R.T.: 7.562 min
 Delta R.T.: 0.000 min
 Response: 646301516
 Conc: 687.03 ng/ml



#9 2,4-D

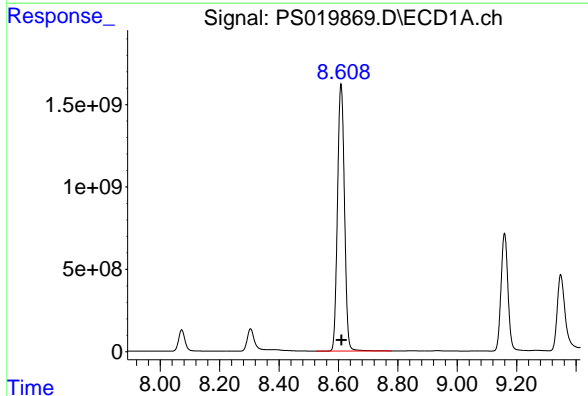
R.T.: 8.304 min
 Delta R.T.: 0.000 min
 Response: 2172727628
 Conc: 731.52 ng/ml

Instrument :
 ECD_S
 ClientSampleId :



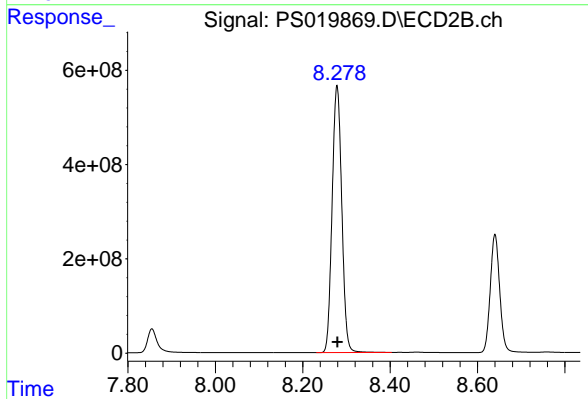
#9 2,4-D

R.T.: 7.855 min
 Delta R.T.: 0.000 min
 Response: 775529435
 Conc: 688.32 ng/ml



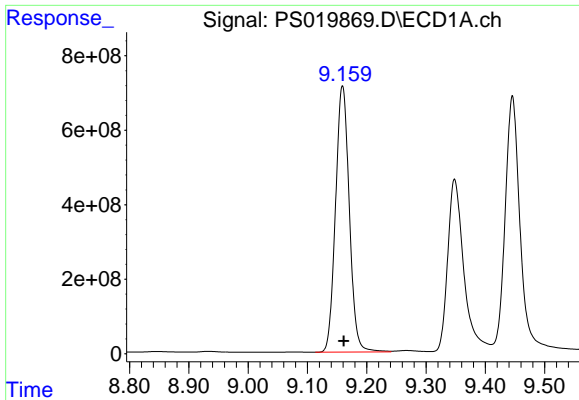
#10 Pentachlorophenol

R.T.: 8.609 min
 Delta R.T.: -0.002 min
 Response: 26445163913
 Conc: 732.29 ng/ml



#10 Pentachlorophenol

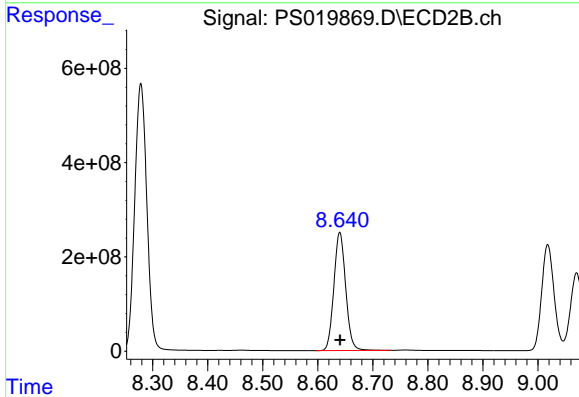
R.T.: 8.279 min
 Delta R.T.: -0.001 min
 Response: 8672003292
 Conc: 702.35 ng/ml



#11 2,4,5-TP (SILVEX)

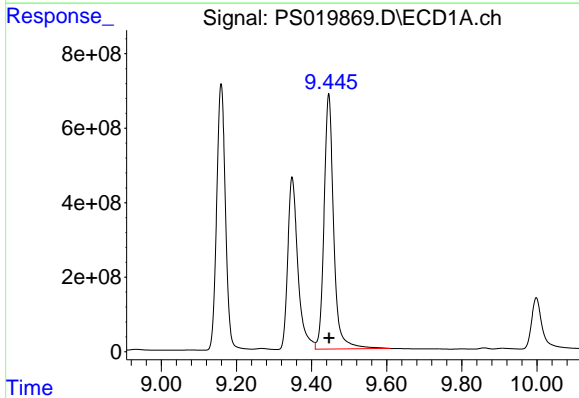
R.T.: 9.159 min
 Delta R.T.: -0.002 min
 Response: 11541449305
 Conc: 721.54 ng/ml

Instrument :
 ECD_S
 ClientSampleId :



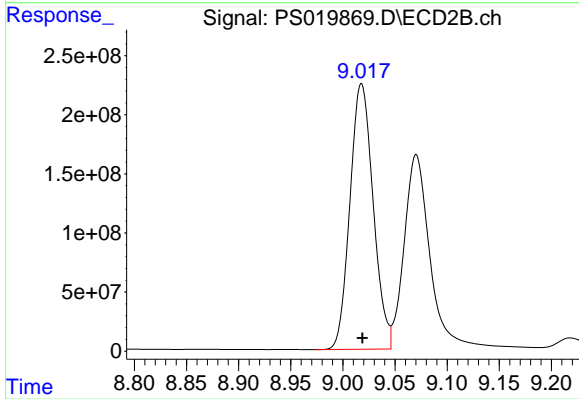
#11 2,4,5-TP (SILVEX)

R.T.: 8.640 min
 Delta R.T.: 0.000 min
 Response: 3737776265
 Conc: 705.29 ng/ml



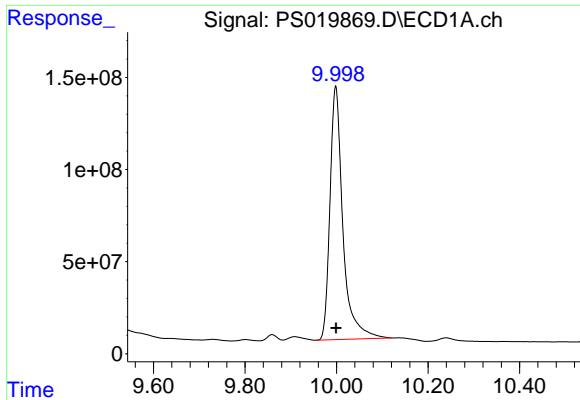
#12 2,4,5-T

R.T.: 9.446 min
 Delta R.T.: -0.001 min
 Response: 12196298612
 Conc: 662.84 ng/ml



#12 2,4,5-T

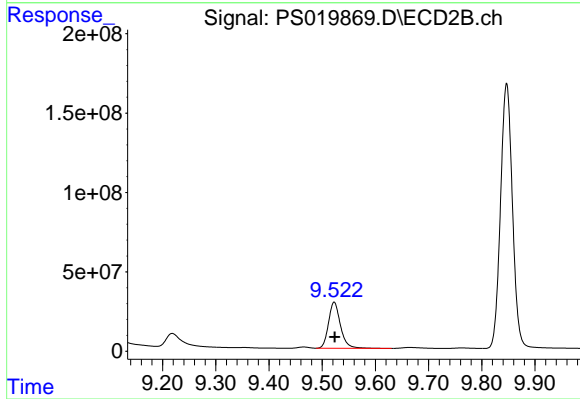
R.T.: 9.018 min
 Delta R.T.: 0.000 min
 Response: 3480909825
 Conc: 712.52 ng/ml



#13 2,4-DB

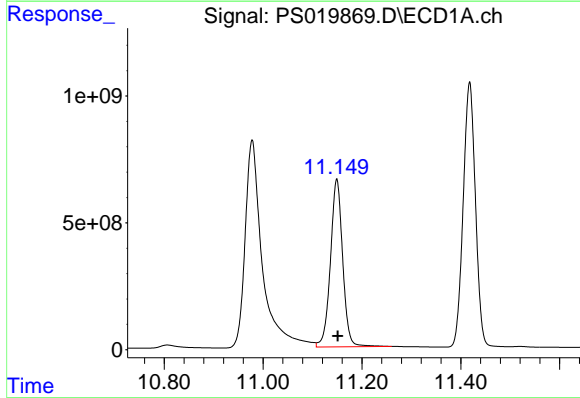
R.T.: 9.998 min
 Delta R.T.: 0.000 min
 Response: 2690796022
 Conc: 672.42 ng/ml

Instrument :
 ECD_S
 ClientSampleId :



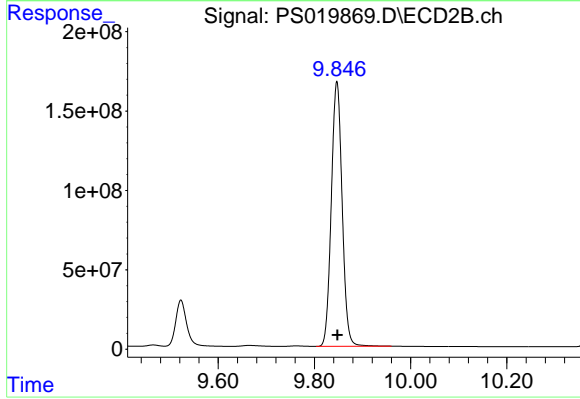
#13 2,4-DB

R.T.: 9.523 min
 Delta R.T.: -0.001 min
 Response: 454739592
 Conc: 700.17 ng/ml



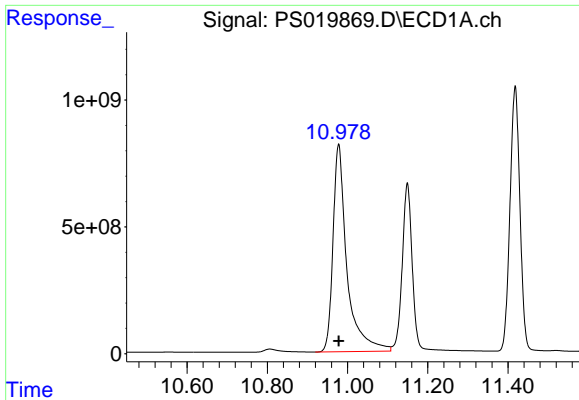
#14 DINOSEB

R.T.: 11.149 min
 Delta R.T.: -0.002 min
 Response: 11377321956
 Conc: 699.81 ng/ml



#14 DINOSEB

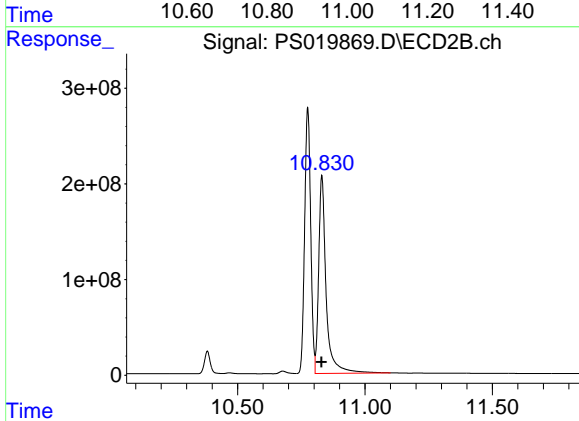
R.T.: 9.847 min
 Delta R.T.: -0.001 min
 Response: 2598289651
 Conc: 729.00 ng/ml



#15 Picloram

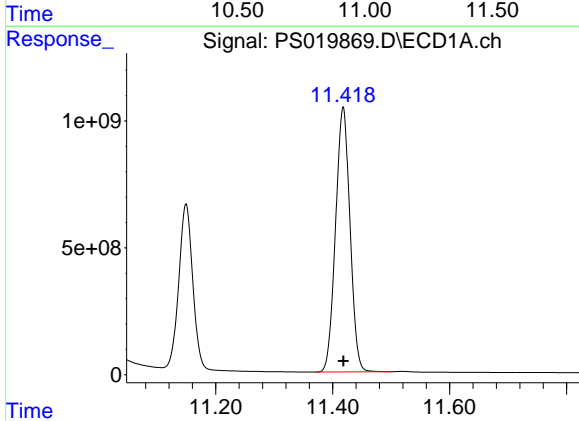
R.T.: 10.978 min
 Delta R.T.: 0.000 min
 Response: 19806713979
 Conc: 635.18 ng/ml

Instrument :
 ECD_S
 ClientSampleId :



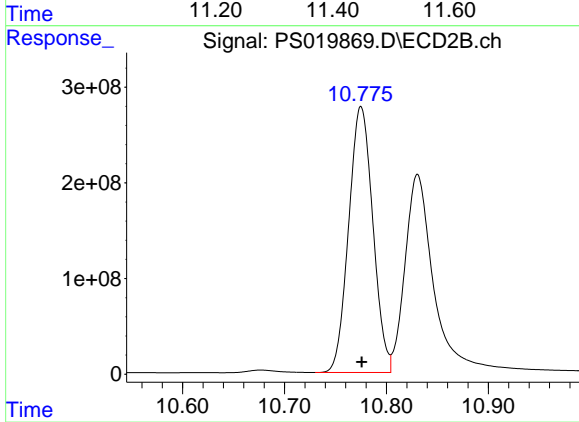
#15 Picloram

R.T.: 10.831 min
 Delta R.T.: 0.001 min
 Response: 4204259806
 Conc: 646.45 ng/ml



#16 DCPA

R.T.: 11.418 min
 Delta R.T.: 0.000 min
 Response: 17930630657
 Conc: 695.06 ng/ml



#16 DCPA

R.T.: 10.775 min
 Delta R.T.: 0.000 min
 Response: 4584069075
 Conc: 707.33 ng/ml