

Data Path : Z:\pestpcbsrv\HPCHEM1\ECD_S\Data\PS070323\
 Data File : PS023601.D
 Signal(s) : Signal #1: ECD1A.ch Signal #2: ECD2B.ch
 Acq On : 03 Jul 2023 16:09
 Operator : AR\AJ
 Sample : PB153958BL
 Misc :
 ALS Vial : 4 Sample Multiplier: 1

Instrument :
 ECD_S
ClientSampleId :
 PB153958BL

Manual Integrations
APPROVED

Reviewed By :Abdul Mirza 07/04/2023
 Supervised By :Ankita Jodhani 07/05/2023

Integration File signal 1: autoint1.e
 Integration File signal 2: autoint2.e
 Quant Time: Jul 03 21:36:10 2023
 Quant Method : Z:\pestpcbsrv\HPCHEM1\ECD_S\Method\PS060623.M
 Quant Title : 8080.M
 QLast Update : Tue Jun 06 13:00:04 2023
 Response via : Initial Calibration
 Integrator: ChemStation

Volume Inj. : 2 µl
 Signal #1 Phase : Rtx-CLPesticides Signal #2 Phase: Rtx-CLPesticides2
 Signal #1 Info : 30M x 0.32mm x0.5 Signal #2 Info : 30M x 0.32mm x 0.25µm

Compound	RT#1	RT#2	Resp#1	Resp#2	ng/ml	ng/ml

System Monitoring Compounds						
4) S 2,4-DCAA	6.491	6.841	897.4E6	278.0E6	507.232	489.787m

Target Compounds

 (f)=RT Delta > 1/2 Window (#)=Amounts differ by > 25% (m)=manual int.

Data Path : Z:\pestpcbsrv\HPCHEM1\ECD_S\Data\PS070323\
 Data File : PS023601.D
 Signal(s) : Signal #1: ECD1A.ch Signal #2: ECD2B.ch
 Acq On : 03 Jul 2023 16:09
 Operator : AR\AJ
 Sample : PB153958BL
 Misc :
 ALS Vial : 4 Sample Multiplier: 1

Instrument :

ECD_S

ClientSampleId :

PB153958BL

Manual Integrations

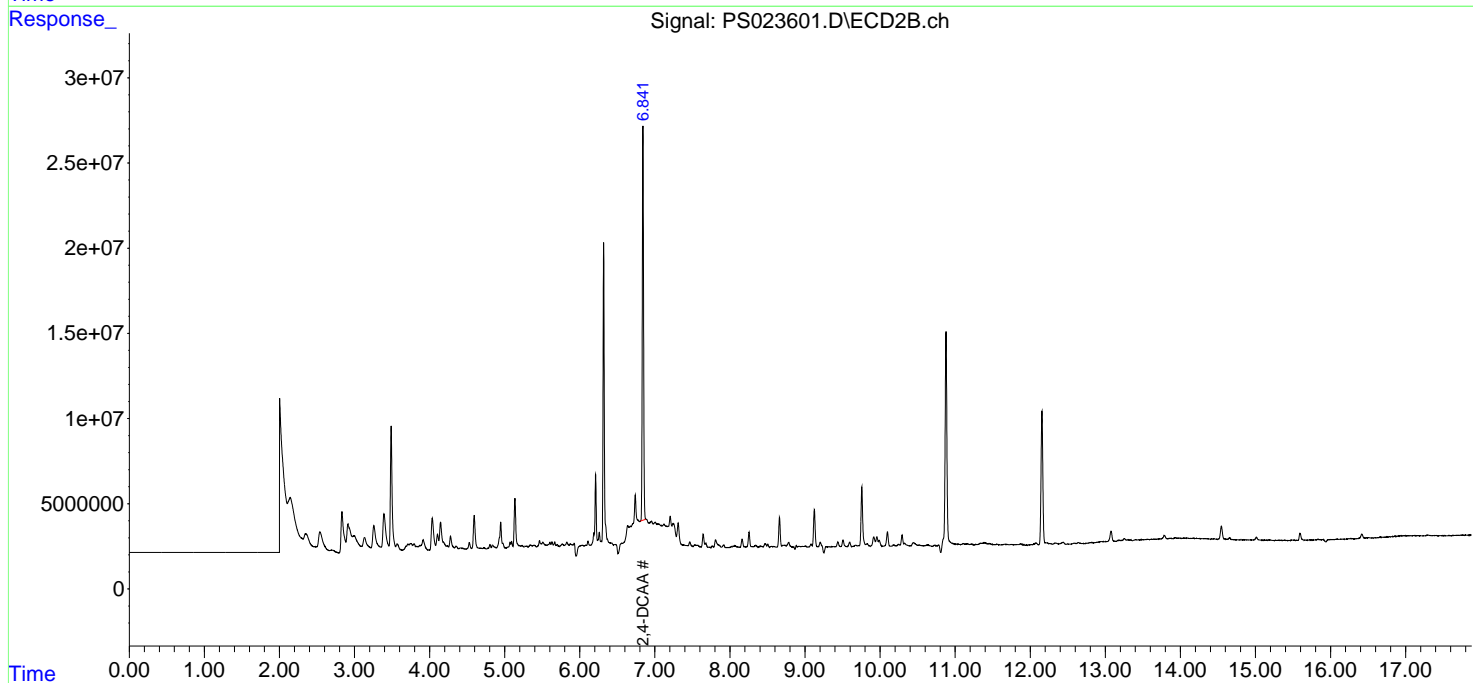
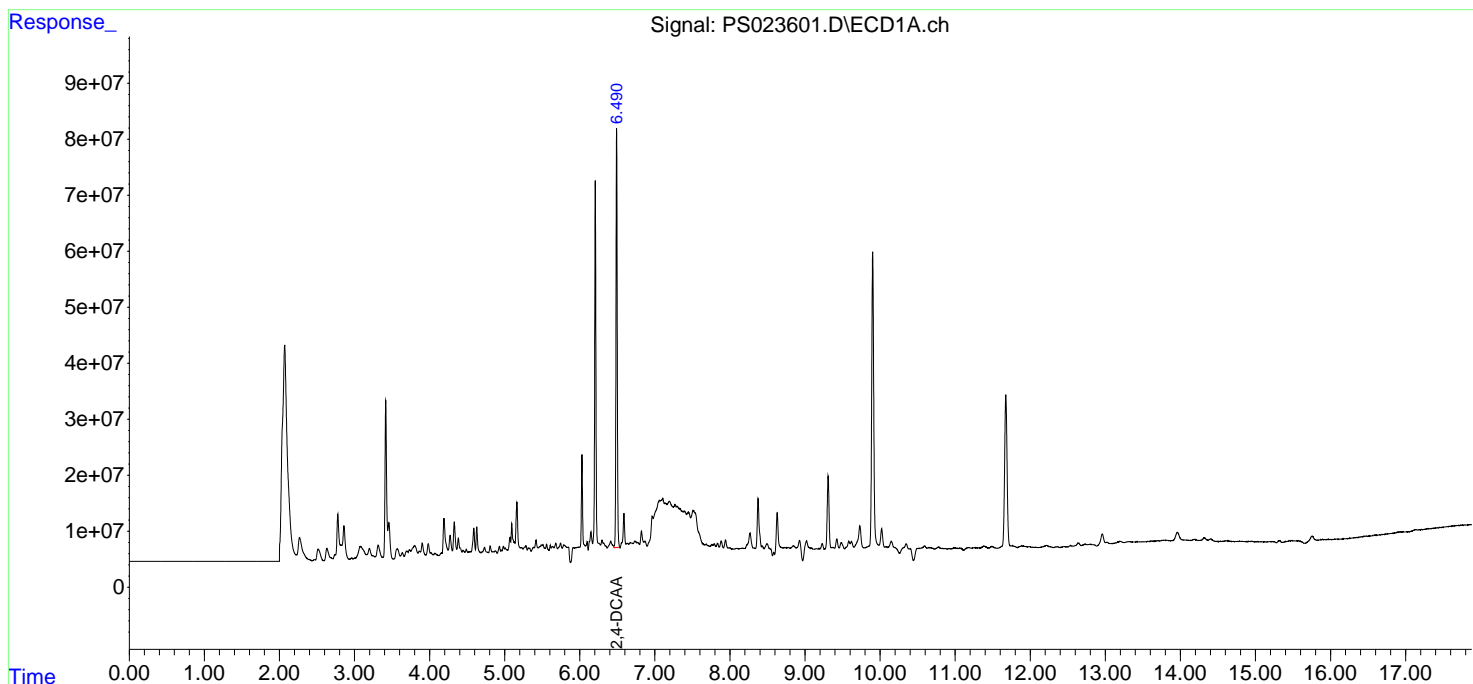
APPROVED

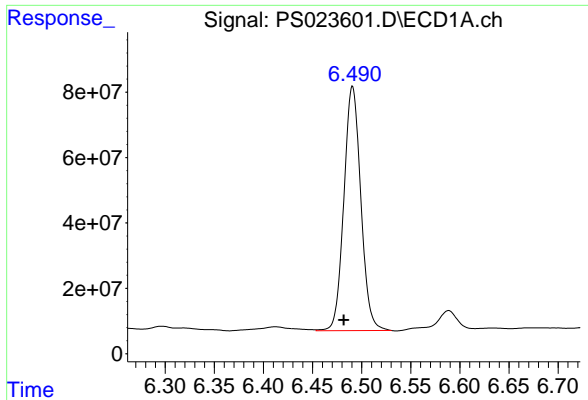
Reviewed By :Abdul Mirza 07/04/2023

Supervised By :Ankita Jodhani 07/05/2023

Integration File signal 1: autoint1.e
 Integration File signal 2: autoint2.e
 Quant Time: Jul 03 21:36:10 2023
 Quant Method : Z:\pestpcbsrv\HPCHEM1\ECD_S\Method\PS060623.M
 Quant Title : 8080.M
 QLast Update : Tue Jun 06 13:00:04 2023
 Response via : Initial Calibration
 Integrator: ChemStation

Volume Inj. : 2 µl
 Signal #1 Phase : Rtx-CLPesticides Signal #2 Phase: Rtx-CLPesticides2
 Signal #1 Info : 30M x 0.32mm x0.5 Signal #2 Info : 30M x 0.32mm x 0.25µm





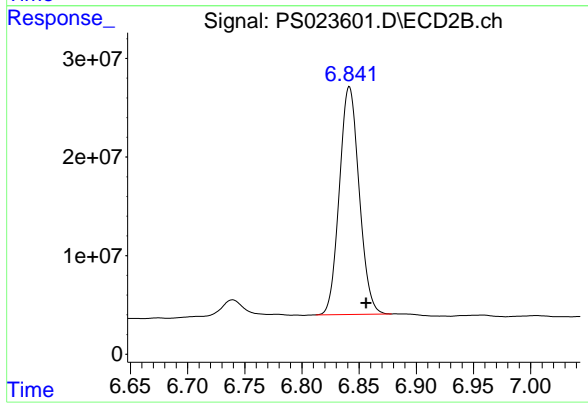
#4 2,4-DCAA

R.T.: 6.491 min
Delta R.T.: 0.009 min
Response: 897422536
Conc: 507.23 ng/ml

Instrument :
ECD_S
ClientSampleId :
PB153958BL

Manual Integrations
APPROVED

Reviewed By :Abdul Mirza 07/04/2023
Supervised By :Ankita Jodhani 07/05/2023



#4 2,4-DCAA

R.T.: 6.841 min
Delta R.T.: -0.015 min
Response: 278049680
Conc: 489.79 ng/ml m