

Data Path : Z:\pestpcbsrv\HPCHEM1\ECD_S\Data\PS070821\
 Data File : PS016053.D
 Signal(s) : Signal #1: ECD1A.ch Signal #2: ECD2B.ch
 Acq On : 08 Jul 2021 10:16
 Operator : DD\AJ
 Sample : HEXANE
 Misc :
 ALS Vial : 1 Sample Multiplier: 1

Instrument :
 ECD_S
 ClientSampleId :
 HEXANE

Integration File signal 1: autoint1.e
 Integration File signal 2: autoint2.e
 Quant Time: Jul 09 01:59:53 2021
 Quant Method : Z:\pestpcbsrv\HPCHEM1\ECD_S\Method\PS063021.M
 Quant Title : 8080.M
 QLast Update : Wed Jun 30 00:31:48 2021
 Response via : Initial Calibration
 Integrator: ChemStation

Volume Inj. : 2 µl
 Signal #1 Phase : Rtx-CLPesticides Signal #2 Phase: Rtx-CLPesticides2
 Signal #1 Info : 30M x 0.32mm x0.5 Signal #2 Info : 30M x 0.32mm x 0.25µm

Compound	RT#1	RT#2	Resp#1	Resp#2	ng/ml	ng/ml
----------	------	------	--------	--------	-------	-------

 System Monitoring Compounds

Target Compounds

9) T	2,4-D	8.366f	0.000	10676796	0	6.660	N.D.	#
15) T	Picloram	10.979	10.818	86997469	34354980	7.909	8.257	
16) T	DCPA	0.000	10.818f	0	34354980	N.D.	7.989	

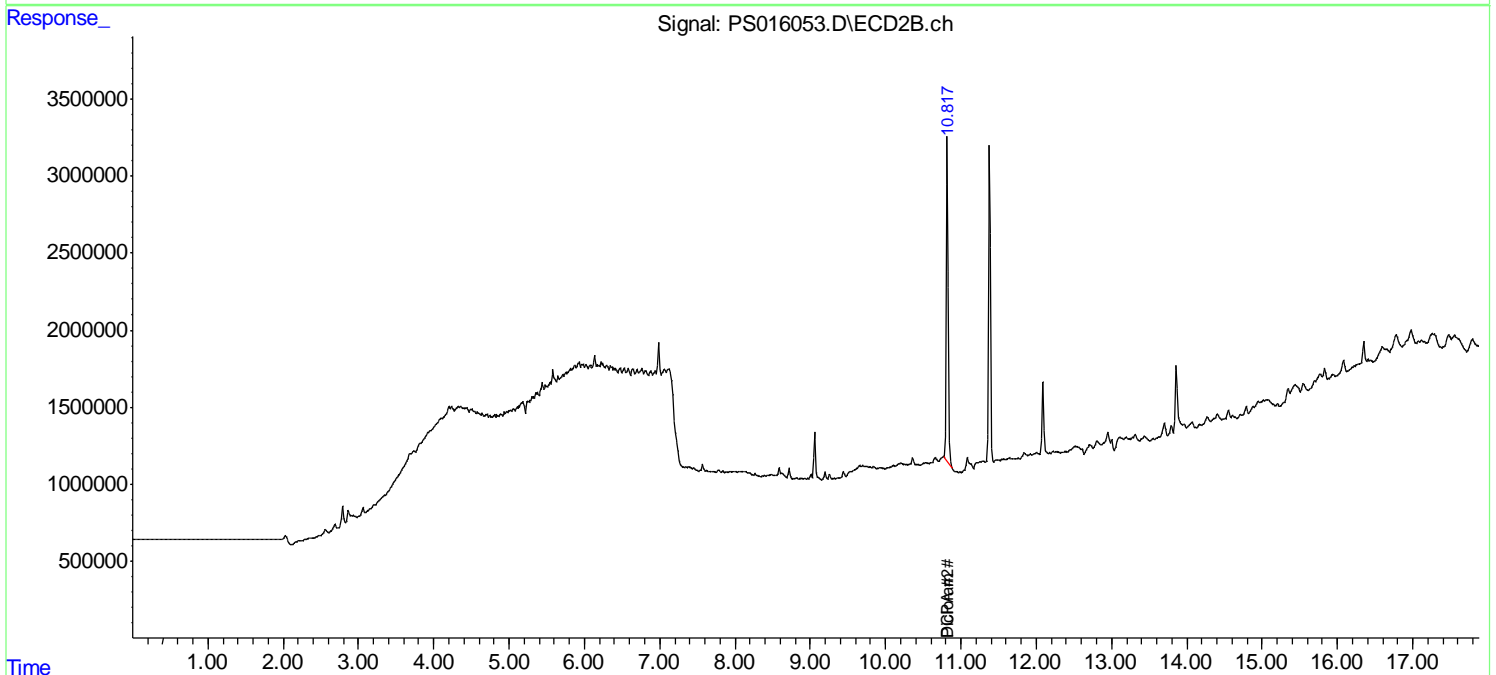
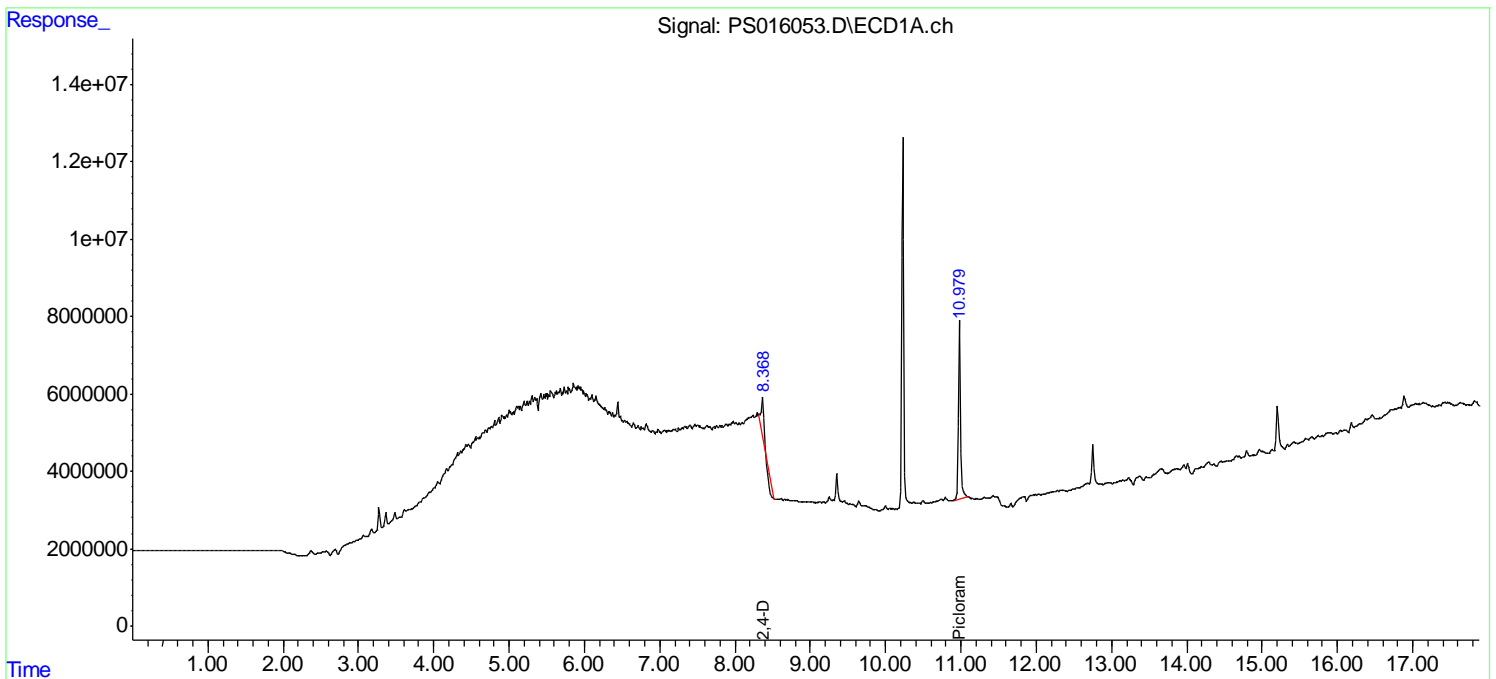
 (f)=RT Delta > 1/2 Window (#)=Amounts differ by > 25% (m)=manual int.

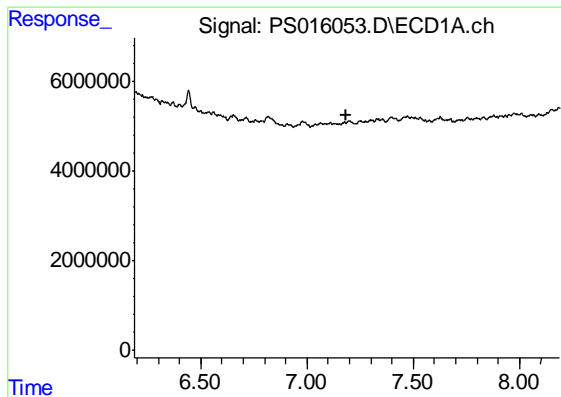
Data Path : Z:\pestpcbsrv\HPCHEM1\ECD_S\Data\PS070821\
 Data File : PS016053.D
 Signal(s) : Signal #1: ECD1A.ch Signal #2: ECD2B.ch
 Acq On : 08 Jul 2021 10:16
 Operator : DD\AJ
 Sample : HEXANE
 Misc :
 ALS Vial : 1 Sample Multiplier: 1

Instrument :
 ECD_S
 ClientSampled :
 HEXANE

Integration File signal 1: autoint1.e
 Integration File signal 2: autoint2.e
 Quant Time: Jul 09 01:59:53 2021
 Quant Method : Z:\pestpcbsrv\HPCHEM1\ECD_S\Method\PS063021.M
 Quant Title : 8080.M
 QLast Update : Wed Jun 30 00:31:48 2021
 Response via : Initial Calibration
 Integrator: ChemStation

Volume Inj. : 2 µl
 Signal #1 Phase : Rtx-CLPesticides Signal #2 Phase: Rtx-CLPesticides2
 Signal #1 Info : 30M x 0.32mm x0.5 Signal #2 Info : 30M x 0.32mm x 0.25µm

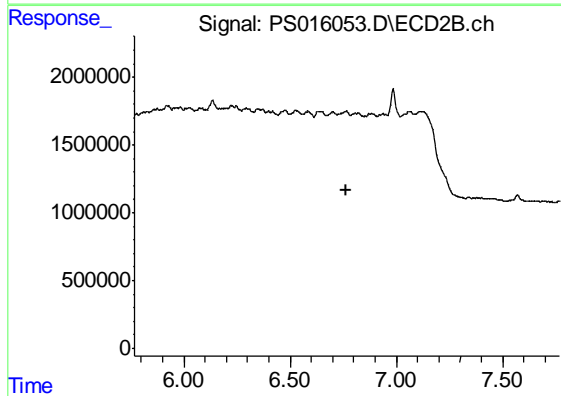




#4 2,4-DCAA

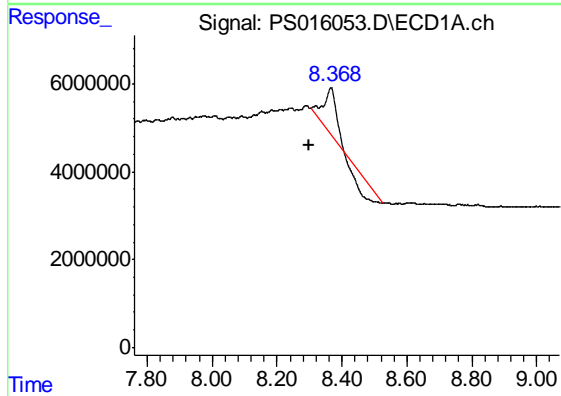
R.T.: 0.000 min
 Exp R.T. : 7.188 min
 Response: 0
 Conc: N.D.

Instrument :
 ECD_S
 ClientSampleId :
 HEXANE



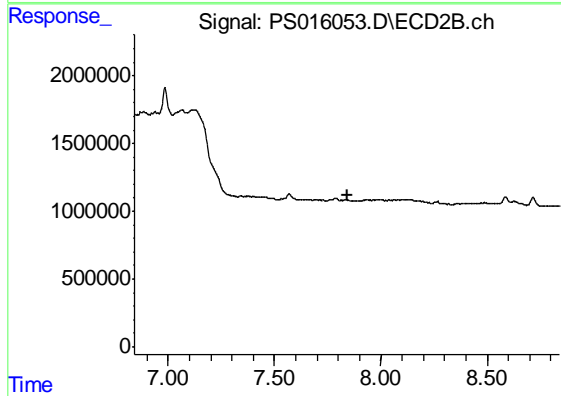
#4 2,4-DCAA

R.T.: 0.000 min
 Exp R.T. : 6.767 min
 Response: 0
 Conc: N.D.



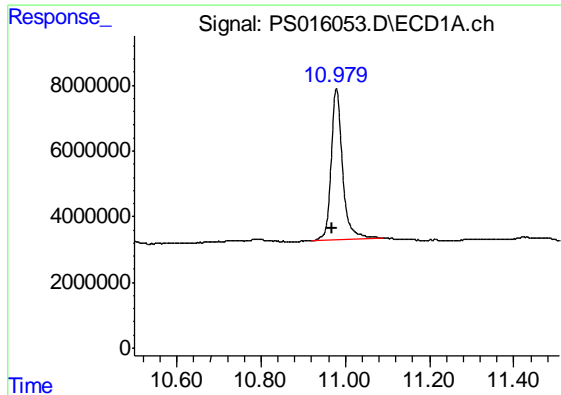
#9 2,4-D

R.T.: 8.366 min
 Delta R.T.: 0.066 min
 Response: 10676796
 Conc: 6.66 ng/ml



#9 2,4-D

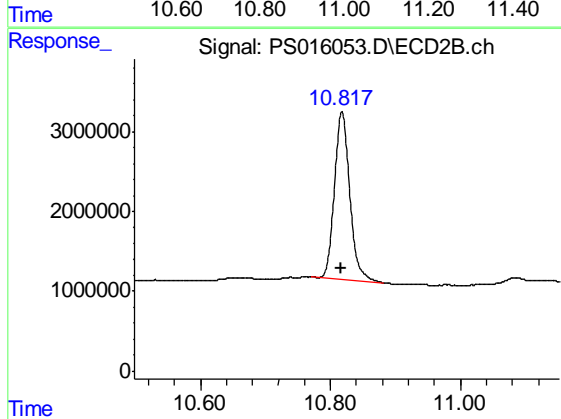
R.T.: 0.000 min
 Exp R.T. : 7.841 min
 Response: 0
 Conc: N.D.



#15 Picloram

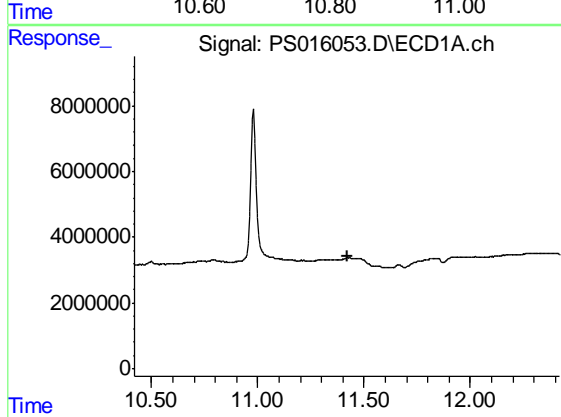
R.T.: 10.979 min
 Delta R.T.: 0.009 min
 Response: 86997469
 Conc: 7.91 ng/ml

Instrument :
 ECD_S
 ClientSampleId :
 HEXANE



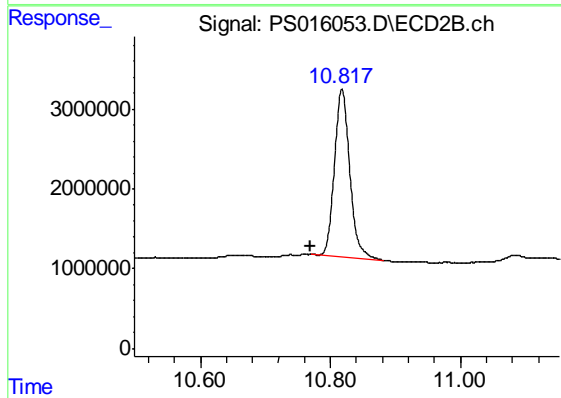
#15 Picloram

R.T.: 10.818 min
 Delta R.T.: 0.002 min
 Response: 34354980
 Conc: 8.26 ng/ml



#16 DCPA

R.T.: 0.000 min
 Exp R.T. : 11.420 min
 Response: 0
 Conc: N.D.



#16 DCPA

R.T.: 10.818 min
 Delta R.T.: 0.048 min
 Response: 34354980
 Conc: 7.99 ng/ml