

Data Path : Z:\pestpcbsrv\HPCHEM1\ECD\_S\Data\PS070822\  
 Data File : PS019817.D  
 Signal(s) : Signal #1: ECD1A.ch Signal #2: ECD2B.ch  
 Acq On : 08 Jul 2022 19:01  
 Operator : AJ\MA  
 Sample : HSTDCCC750  
 Misc :  
 ALS Vial : 3 Sample Multiplier: 1

Instrument :  
 ECD\_S  
 ClientSampleId :

Integration File signal 1: autoint1.e  
 Integration File signal 2: autoint2.e  
 Quant Time: Jul 09 01:04:43 2022  
 Quant Method : Z:\pestpcbsrv\HPCHEM1\ECD\_S\Method\PS062722.M  
 Quant Title : 8080.M  
 QLast Update : Mon Jun 27 17:26:48 2022  
 Response via : Initial Calibration  
 Integrator: ChemStation

Volume Inj. : 2 µl  
 Signal #1 Phase : Rtx-CLPesticides Signal #2 Phase: Rtx-CLPesticides2  
 Signal #1 Info : 30M x 0.32mm x0.5 Signal #2 Info : 30M x 0.32mm x 0.25µm

	Compound	RT#1	RT#2	Resp#1	Resp#2	ng/ml	ng/ml
-----							
System Monitoring Compounds							
4) S	2,4-DCAA	7.192	6.777	1923.5E6	582.8E6	741.612	717.548
Target Compounds							
1) T	Dalapon	3.014	2.525	3123.9E6	644.4E6	644.470	607.189
2) T	3,5-DICHL...	6.407	5.959	2373.7E6	855.1E6	692.981	669.161
3) T	4-Nitroph...	7.025	6.397	777.9E6	292.7E6	730.893	676.828
5) T	DICAMBA	7.381	6.941	7183.0E6	2469.8E6	700.024	677.031
6) T	MCP P	7.549	7.038	549.4E6	191.9E6	68.484	66.859
7) T	MCPA	7.698	7.250	810.8E6	267.4E6	69.196	66.072
8) T	DICHLORPROP	8.071	7.560	1882.3E6	632.8E6	695.202	672.698
9) T	2,4-D	8.302	7.853	2075.2E6	751.3E6	698.687	666.814
10) T	Pentachlo...	8.606	8.277	25754.8E6	8477.9E6	713.173	686.629
11) T	2,4,5-TP ...	9.157	8.637	11184.2E6	3647.5E6	699.201	688.258
12) T	2,4,5-T	9.442	9.015	11694.0E6	3397.8E6	635.542	695.517
13) T	2,4-DB	9.995	9.521	2618.0E6	440.2E6	654.240	677.795
14) T	DINOSEB	11.145	9.844	10923.9E6	2543.6E6	671.921	713.642
15) T	Picloram	10.972	10.827	20486.1E6	4227.2E6	656.968	649.984
16) T	DCPA	11.413	10.772	17341.5E6	4491.1E6	672.224	692.983
-----							

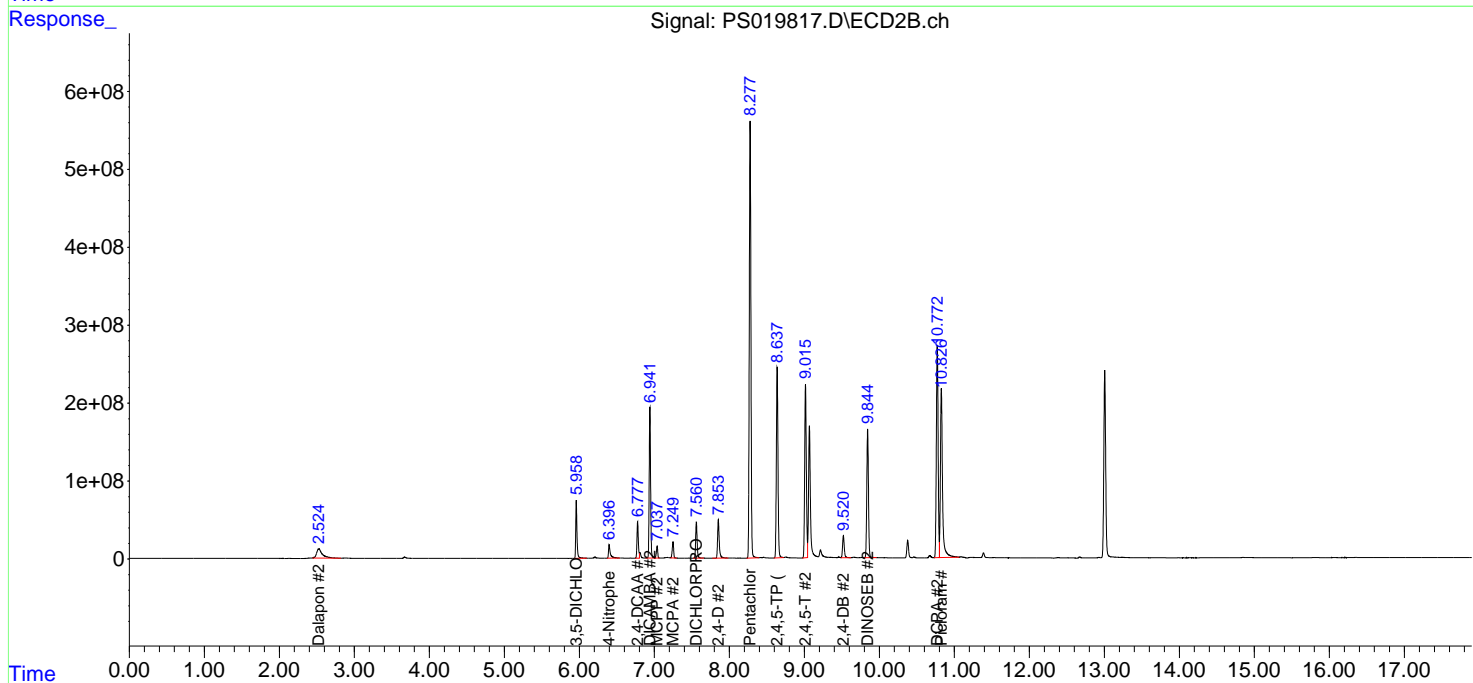
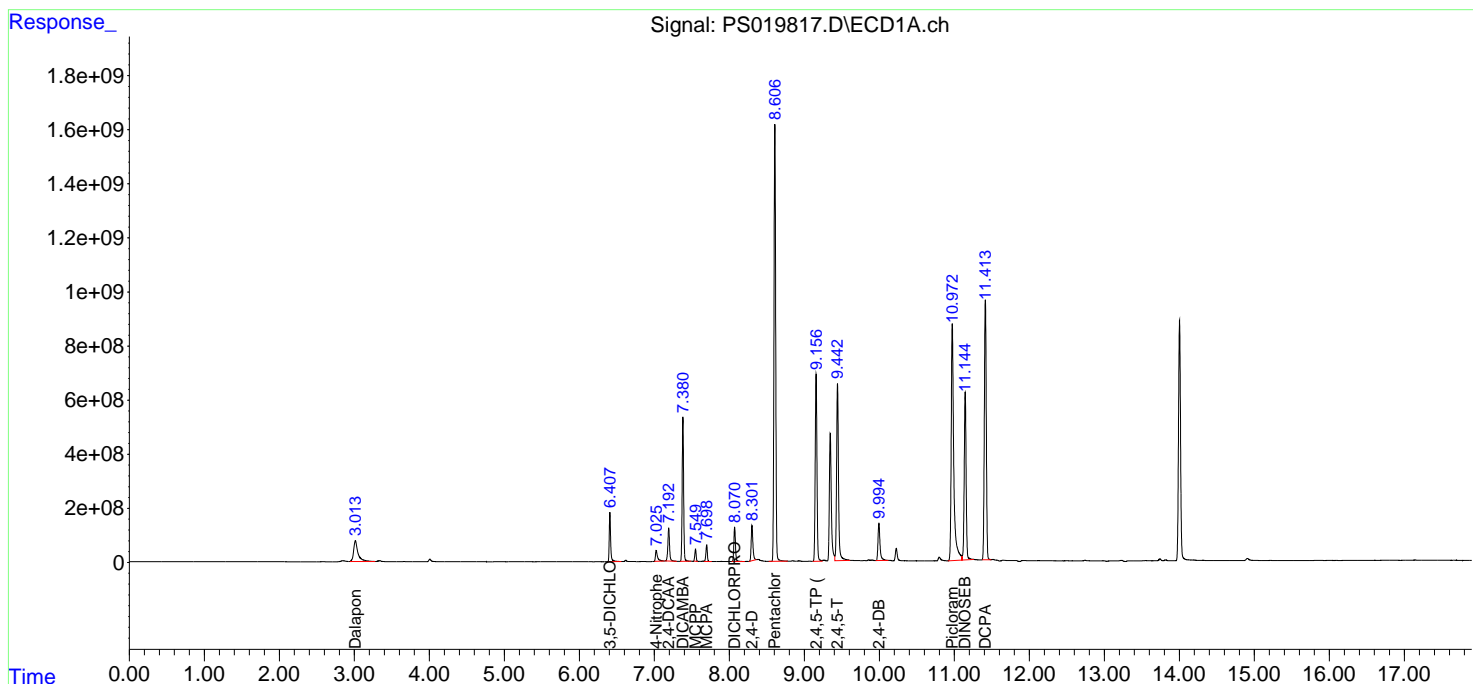
(f)=RT Delta > 1/2 Window (#)=Amounts differ by > 25% (m)=manual int.

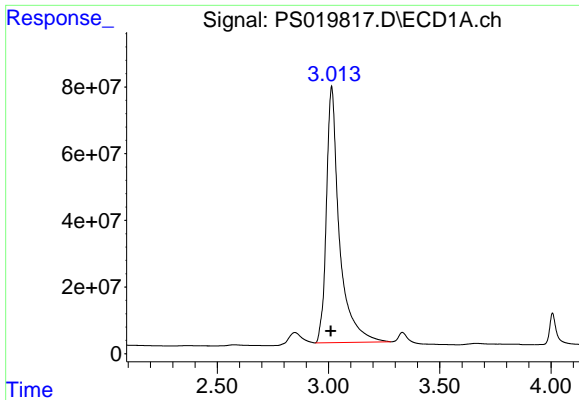
Data Path : Z:\pestpcbsrv\HPCHEM1\ECD\_S\Data\PS070822\  
 Data File : PS019817.D  
 Signal(s) : Signal #1: ECD1A.ch Signal #2: ECD2B.ch  
 Acq On : 08 Jul 2022 19:01  
 Operator : AJ\MA  
 Sample : HSTDCCC750  
 Misc :  
 ALS Vial : 3 Sample Multiplier: 1

Instrument :  
 ECD\_S  
 ClientSampleId :

Integration File signal 1: autoint1.e  
 Integration File signal 2: autoint2.e  
 Quant Time: Jul 09 01:04:43 2022  
 Quant Method : Z:\pestpcbsrv\HPCHEM1\ECD\_S\Method\PS062722.M  
 Quant Title : 8080.M  
 QLast Update : Mon Jun 27 17:26:48 2022  
 Response via : Initial Calibration  
 Integrator: ChemStation

Volume Inj. : 2 µl  
 Signal #1 Phase : Rtx-CLPesticides Signal #2 Phase: Rtx-CLPesticides2  
 Signal #1 Info : 30M x 0.32mm x0.5 Signal #2 Info : 30M x 0.32mm x 0.25µm

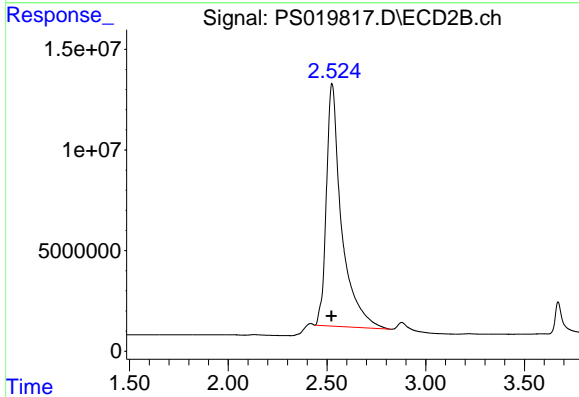




#1 Dalapon

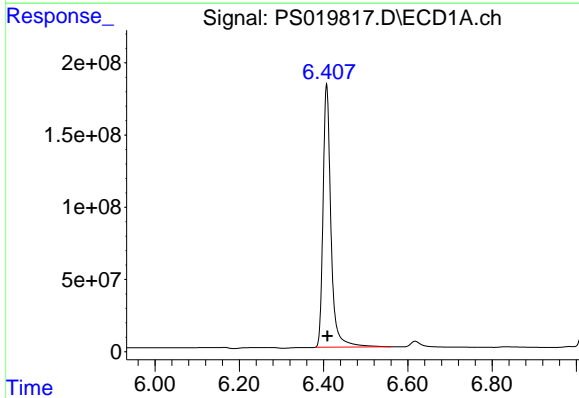
R.T.: 3.014 min  
 Delta R.T.: 0.004 min  
 Response: 3123881843  
 Conc: 644.47 ng/ml

Instrument :  
 ECD\_S  
 ClientSampleId :



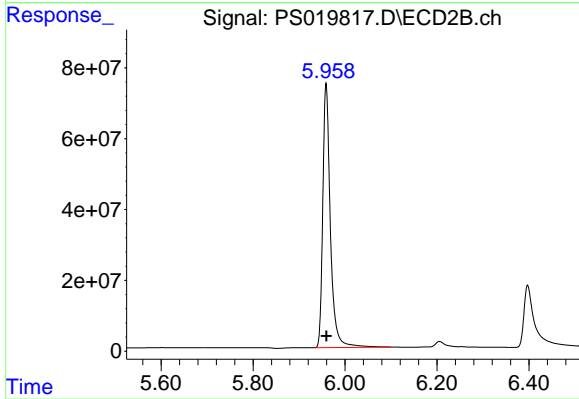
#1 Dalapon

R.T.: 2.525 min  
 Delta R.T.: 0.003 min  
 Response: 644442712  
 Conc: 607.19 ng/ml



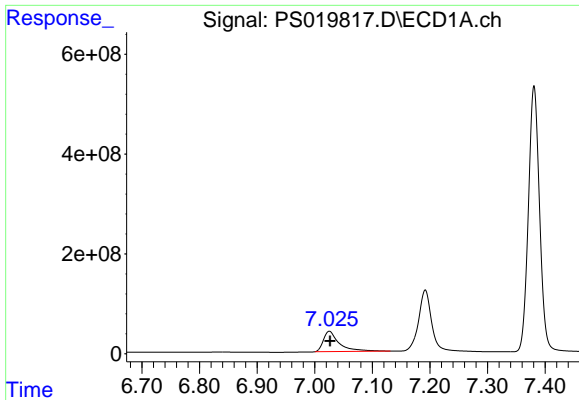
#2 3,5-DICHLOROBENZOIC ACID

R.T.: 6.407 min  
 Delta R.T.: -0.001 min  
 Response: 2373727225  
 Conc: 692.98 ng/ml



#2 3,5-DICHLOROBENZOIC ACID

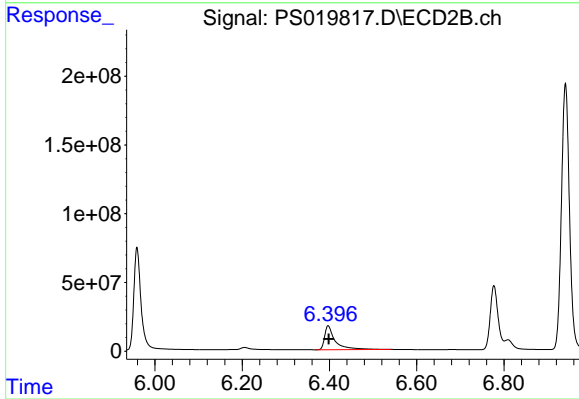
R.T.: 5.959 min  
 Delta R.T.: 0.000 min  
 Response: 855098127  
 Conc: 669.16 ng/ml



#3 4-Nitrophenol

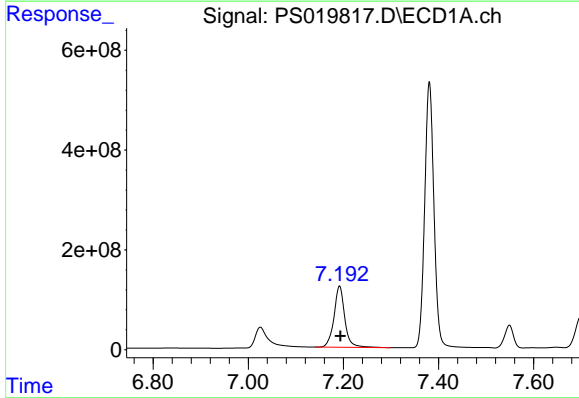
R.T.: 7.025 min  
Delta R.T.: -0.001 min  
Response: 777943968  
Conc: 730.89 ng/ml

Instrument :  
ECD\_S  
ClientSampleId :



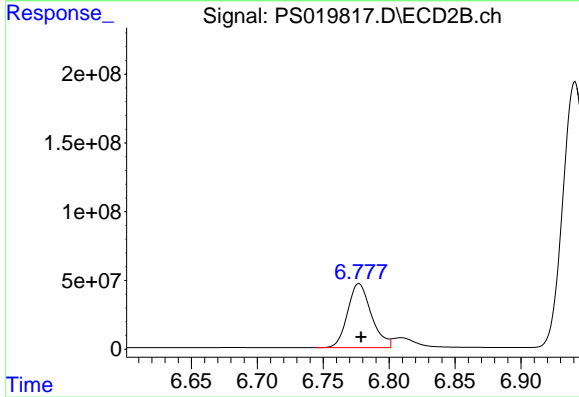
#3 4-Nitrophenol

R.T.: 6.397 min  
Delta R.T.: -0.002 min  
Response: 292737497  
Conc: 676.83 ng/ml



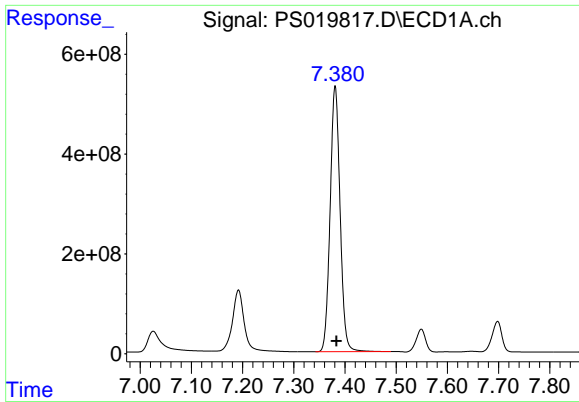
#4 2,4-DCAA

R.T.: 7.192 min  
Delta R.T.: -0.002 min  
Response: 1923483240  
Conc: 741.61 ng/ml



#4 2,4-DCAA

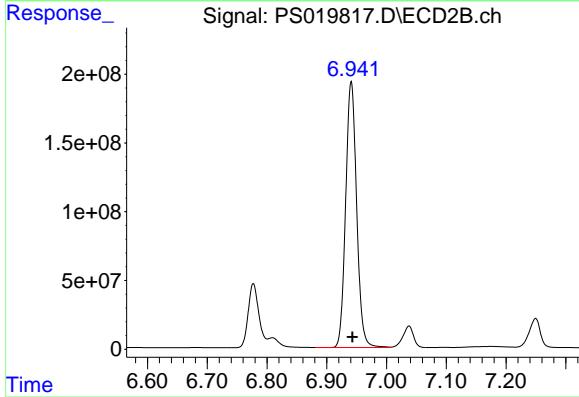
R.T.: 6.777 min  
Delta R.T.: -0.002 min  
Response: 582753939  
Conc: 717.55 ng/ml



#5 DICAMBA

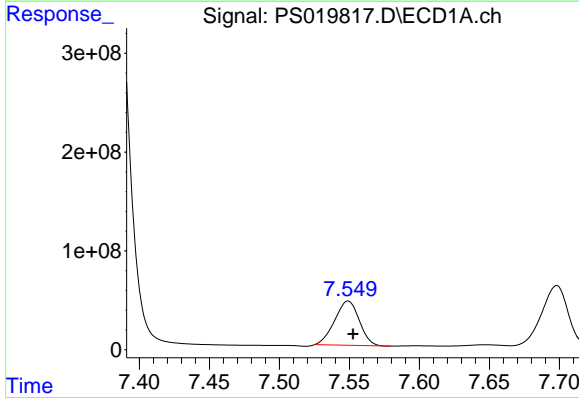
R.T.: 7.381 min  
 Delta R.T.: -0.002 min  
 Response: 7182959058  
 Conc: 700.02 ng/ml

Instrument :  
 ECD\_S  
 ClientSampleId :



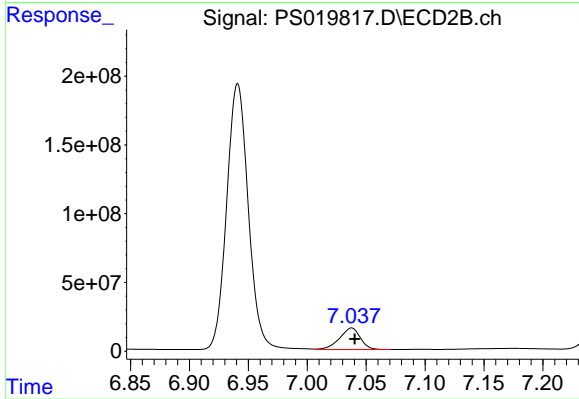
#5 DICAMBA

R.T.: 6.941 min  
 Delta R.T.: -0.002 min  
 Response: 2469788306  
 Conc: 677.03 ng/ml



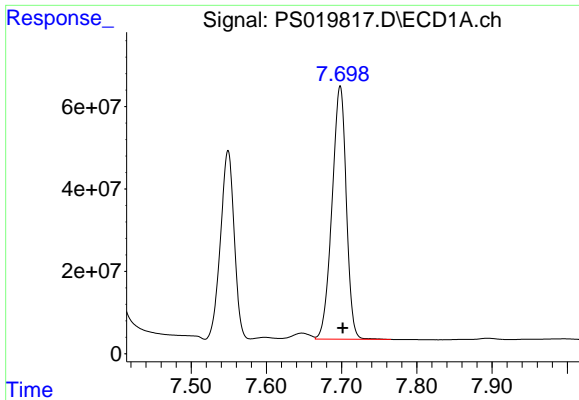
#6 MCP

R.T.: 7.549 min  
 Delta R.T.: -0.003 min  
 Response: 549444151  
 Conc: 68.48 ug/ml



#6 MCP

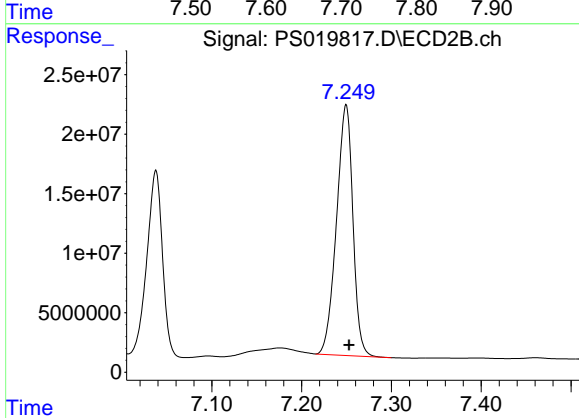
R.T.: 7.038 min  
 Delta R.T.: -0.003 min  
 Response: 191914393  
 Conc: 66.86 ug/ml



#7 MCPA

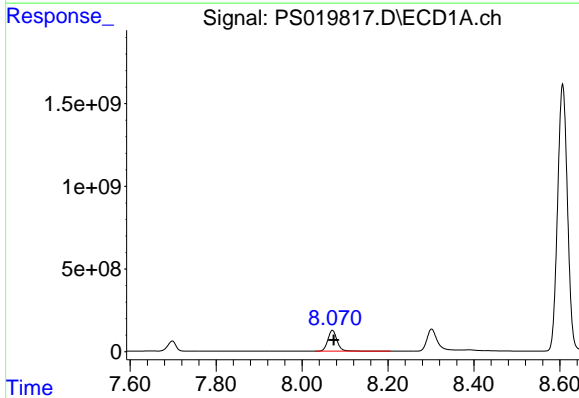
R.T.: 7.698 min  
 Delta R.T.: -0.003 min  
 Response: 810830712  
 Conc: 69.20 ug/ml

Instrument :  
 ECD\_S  
 ClientSampleId :



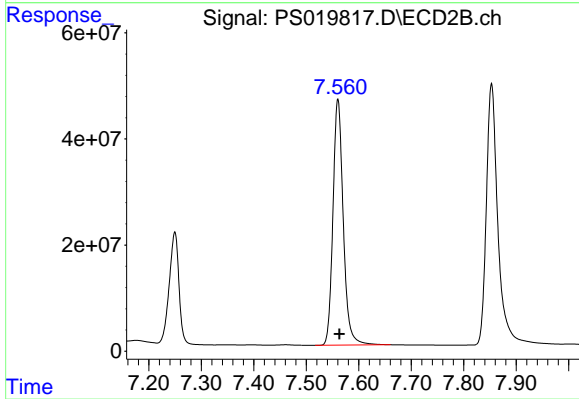
#7 MCPA

R.T.: 7.250 min  
 Delta R.T.: -0.003 min  
 Response: 267431351  
 Conc: 66.07 ug/ml



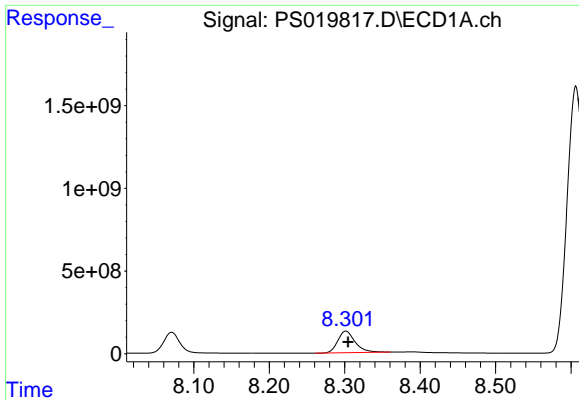
#8 DICHLORPROP

R.T.: 8.071 min  
 Delta R.T.: -0.004 min  
 Response: 1882251105  
 Conc: 695.20 ng/ml



#8 DICHLORPROP

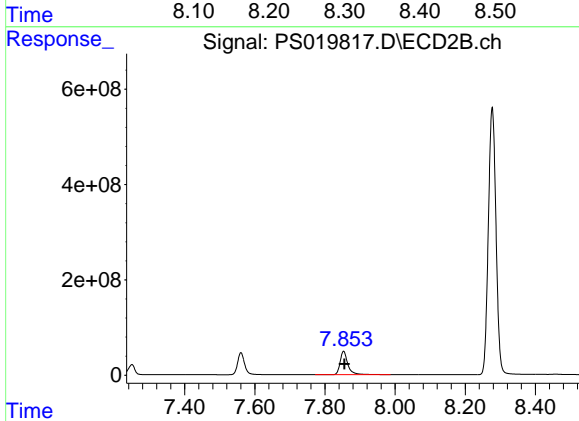
R.T.: 7.560 min  
 Delta R.T.: -0.003 min  
 Response: 632820755  
 Conc: 672.70 ng/ml



#9 2,4-D

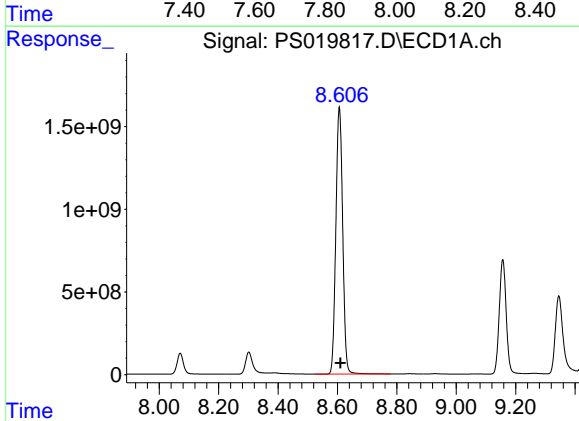
R.T.: 8.302 min  
 Delta R.T.: -0.003 min  
 Response: 2075195813  
 Conc: 698.69 ng/ml

Instrument :  
 ECD\_S  
 ClientSampleId :



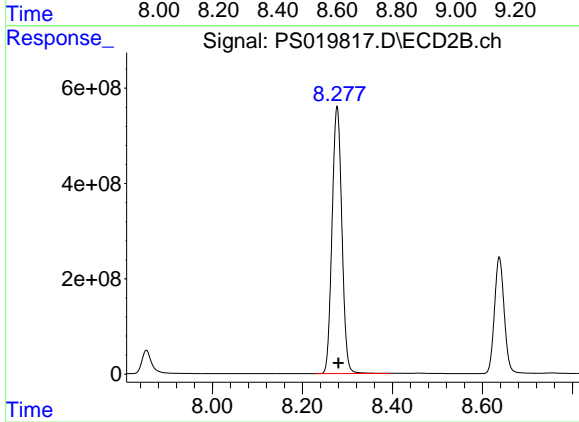
#9 2,4-D

R.T.: 7.853 min  
 Delta R.T.: -0.003 min  
 Response: 751301258  
 Conc: 666.81 ng/ml



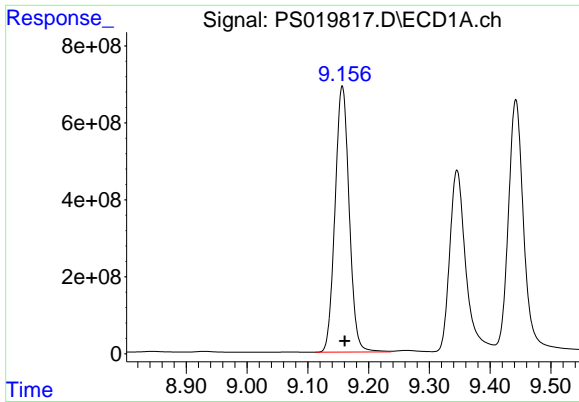
#10 Pentachlorophenol

R.T.: 8.606 min  
 Delta R.T.: -0.004 min  
 Response: 25754833494  
 Conc: 713.17 ng/ml



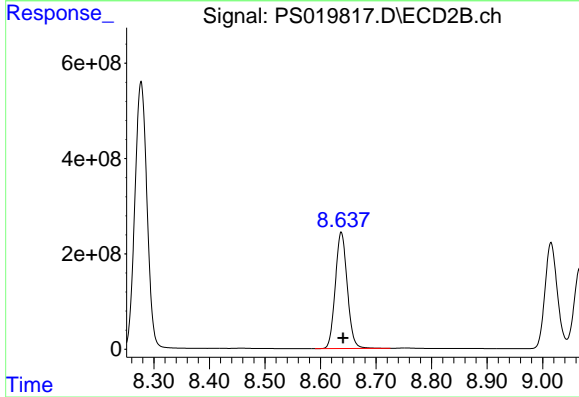
#10 Pentachlorophenol

R.T.: 8.277 min  
 Delta R.T.: -0.003 min  
 Response: 8477945730  
 Conc: 686.63 ng/ml

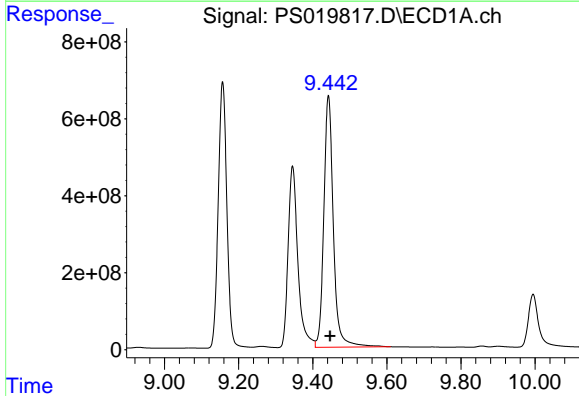


#11 2,4,5-TP (SILVEX)  
 R.T.: 9.157 min  
 Delta R.T.: -0.004 min  
 Response: 11184184333  
 Conc: 699.20 ng/ml

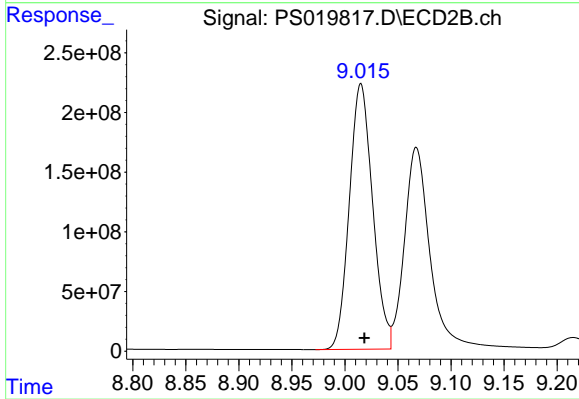
Instrument :  
 ECD\_S  
 ClientSampleId :



#11 2,4,5-TP (SILVEX)  
 R.T.: 8.637 min  
 Delta R.T.: -0.003 min  
 Response: 3647508008  
 Conc: 688.26 ng/ml

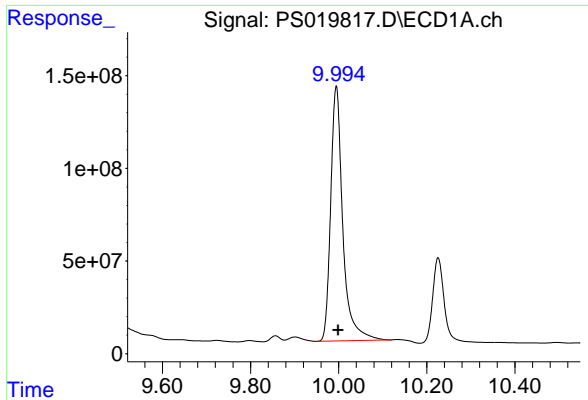


#12 2,4,5-T  
 R.T.: 9.442 min  
 Delta R.T.: -0.005 min  
 Response: 11693992110  
 Conc: 635.54 ng/ml



#12 2,4,5-T  
 R.T.: 9.015 min  
 Delta R.T.: -0.004 min  
 Response: 3397833806  
 Conc: 695.52 ng/ml

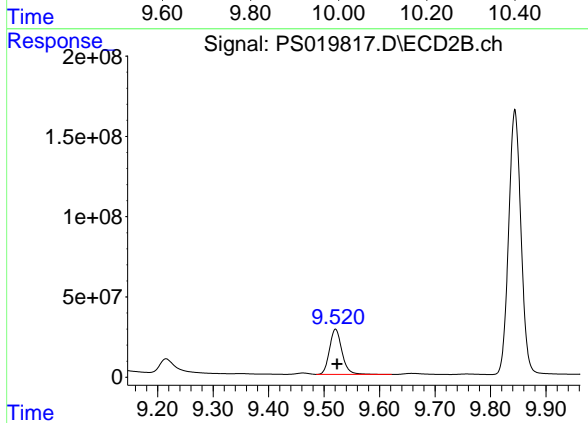




#13 2,4-DB

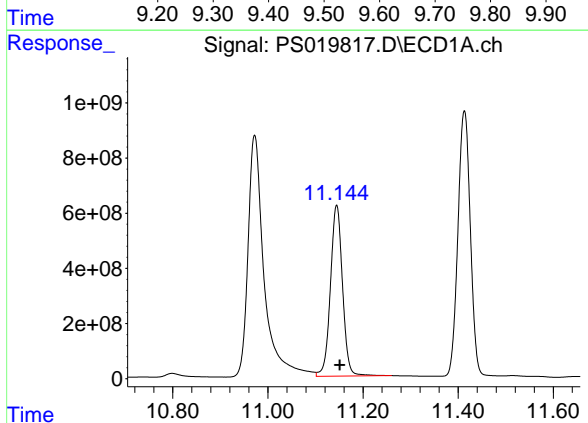
R.T.: 9.995 min  
 Delta R.T.: -0.004 min  
 Response: 2618032917  
 Conc: 654.24 ng/ml

Instrument :  
 ECD\_S  
 ClientSampleId :



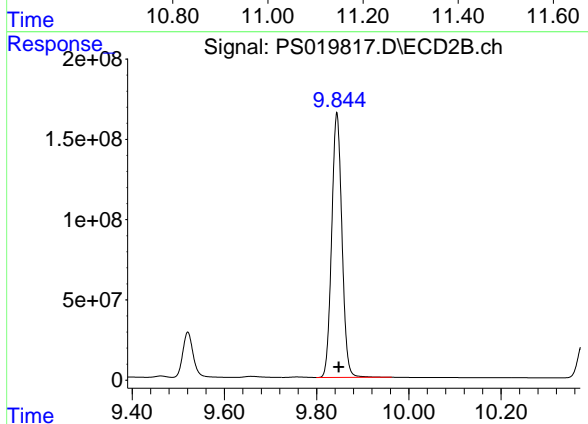
#13 2,4-DB

R.T.: 9.521 min  
 Delta R.T.: -0.003 min  
 Response: 440206226  
 Conc: 677.79 ng/ml



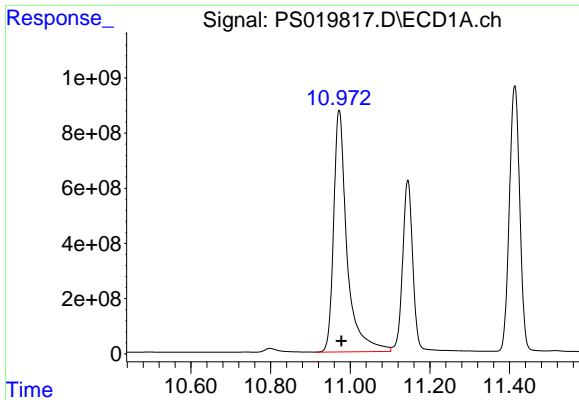
#14 DINOSEB

R.T.: 11.145 min  
 Delta R.T.: -0.006 min  
 Response: 10923856705  
 Conc: 671.92 ng/ml



#14 DINOSEB

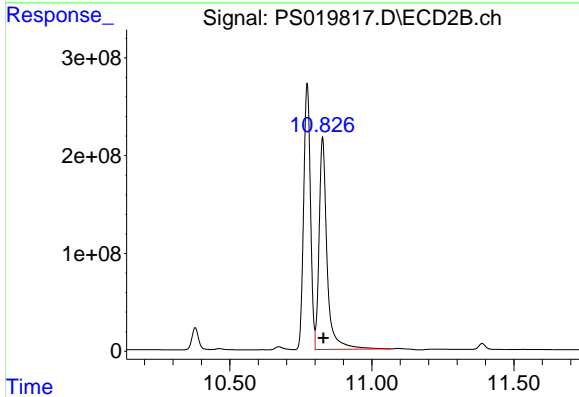
R.T.: 9.844 min  
 Delta R.T.: -0.004 min  
 Response: 2543565903  
 Conc: 713.64 ng/ml



#15 Picloram

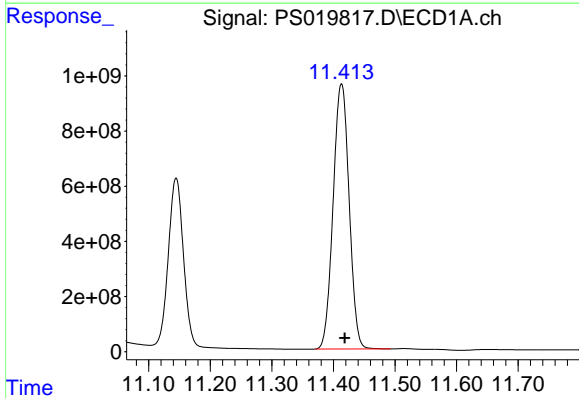
R.T.: 10.972 min  
 Delta R.T.: -0.006 min  
 Response: 20486138632  
 Conc: 656.97 ng/ml

Instrument :  
 ECD\_S  
 ClientSampleId :



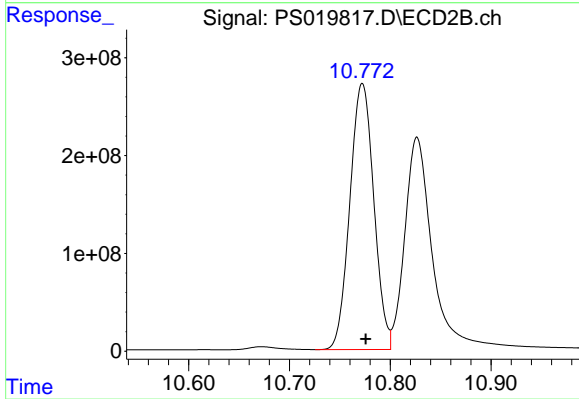
#15 Picloram

R.T.: 10.827 min  
 Delta R.T.: -0.003 min  
 Response: 4227235454  
 Conc: 649.98 ng/ml



#16 DCPA

R.T.: 11.413 min  
 Delta R.T.: -0.005 min  
 Response: 17341455234  
 Conc: 672.22 ng/ml



#16 DCPA

R.T.: 10.772 min  
 Delta R.T.: -0.003 min  
 Response: 4491102731  
 Conc: 692.98 ng/ml