

Data Path : Z:\pestpcbsrv\HPCHEM1\ECD_S\Data\PS070920\
 Data File : PS011133.D
 Signal(s) : Signal #1: ECD1A.ch Signal #2: ECD2B.ch
 Acq On : 09 Jul 2020 18:07
 Operator : DD\AJ
 Sample : L3203-09
 Misc :
 ALS Vial : 11 Sample Multiplier: 1

Instrument :
 ECD_S
 ClientSampleId :

Integration File signal 1: autoint1.e
 Integration File signal 2: autoint2.e
 Quant Time: Jul 09 19:06:26 2020
 Quant Method : Z:\pestpcbsrv\HPCHEM1\ECD_S\Method\PS062420.M
 Quant Title : 8080.M
 QLast Update : Thu Jun 25 02:45:12 2020
 Response via : Initial Calibration
 Integrator: ChemStation

Volume Inj. : 2 µl
 Signal #1 Phase : Rtx-CLPesticides Signal #2 Phase: Rtx-CLPesticides2
 Signal #1 Info : 30M x 0.32mm x0.5 Signal #2 Info : 30M x 0.32mm x 0.25µm

	Compound	RT#1	RT#2	Resp#1	Resp#2	ng/ml	ng/ml

System Monitoring Compounds							
4) S	2,4-DCAA	7.228	6.919	322.5E6	147.3E6	355.672	265.786 #
Target Compounds							
1) T	Dalapon	2.994	2.585	34230647	119.4E6	30.571	158.221 #
2) T	3,5-DICHL...	0.000	6.100	0	49912674	N.D.	59.932
3) T	4-Nitroph...	0.000	6.552	0	5131984	N.D.	15.971
5) T	DICAMBA	7.431	0.000	13475023	0	3.696	N.D. #
6) T	MCP P	7.583	0.000	6910331	0	2.423	N.D. #
7) T	MCPA	7.706	7.382	7405188	18617771	1.859	6.746 #
8) T	DICHLORPROP	0.000	7.735	0	8247036	N.D.	14.046
9) T	2,4-D	0.000	7.989	0	12688965	N.D.	17.559
10) T	Pentachlo...	8.649	8.438	12523901	17256022	1.007	2.482 #
12) T	2,4,5-T	9.513	9.174	27816507	14415623	5.972	4.841
13) T	2,4-DB	9.986	9.708	26892337	16638857	45.248	40.485
14) T	DINOSEB	11.166	10.035	51476666	31790215	14.373	15.268
15) T	Picloram	10.992	11.003	176.4E6	18405901	31.474	4.393 #
16) T	DCPA	0.000	11.003	0	18405901	N.D.	4.942

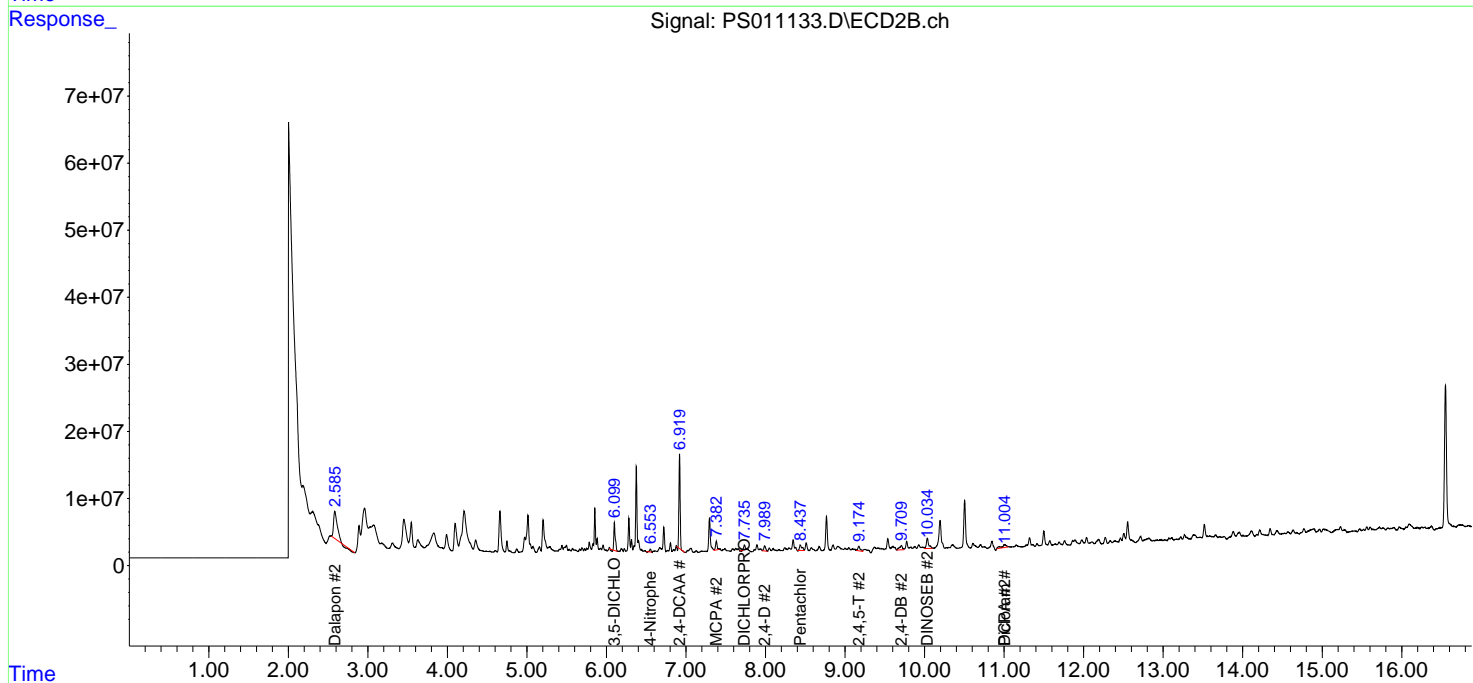
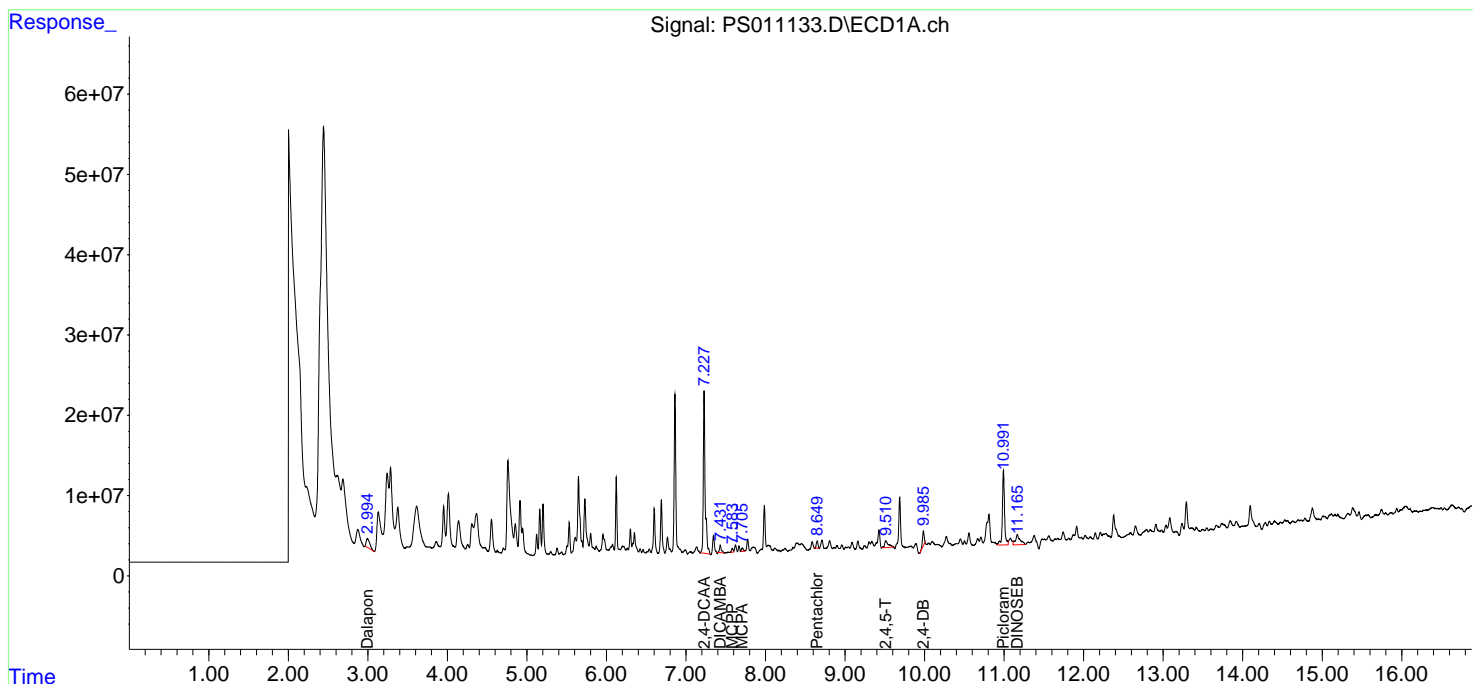
(f)=RT Delta > 1/2 Window (#)=Amounts differ by > 25% (m)=manual int.

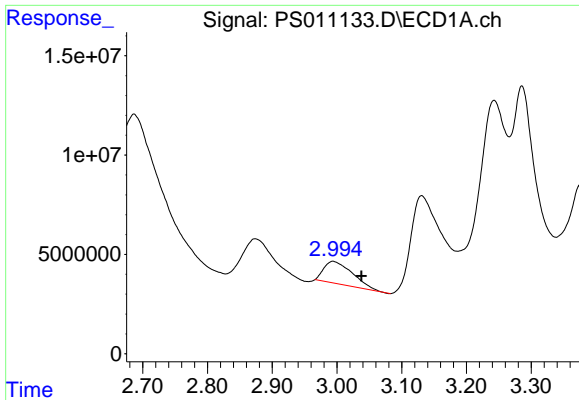
Data Path : Z:\pestpcbsrv\HPCHEM1\ECD_S\Data\PS070920\
 Data File : PS011133.D
 Signal(s) : Signal #1: ECD1A.ch Signal #2: ECD2B.ch
 Acq On : 09 Jul 2020 18:07
 Operator : DD\AJ
 Sample : L3203-09
 Misc :
 ALS Vial : 11 Sample Multiplier: 1

Instrument :
 ECD_S
 ClientSampled :

Integration File signal 1: autoint1.e
 Integration File signal 2: autoint2.e
 Quant Time: Jul 09 19:06:26 2020
 Quant Method : Z:\pestpcbsrv\HPCHEM1\ECD_S\Method\PS062420.M
 Quant Title : 8080.M
 QLast Update : Thu Jun 25 02:45:12 2020
 Response via : Initial Calibration
 Integrator: ChemStation

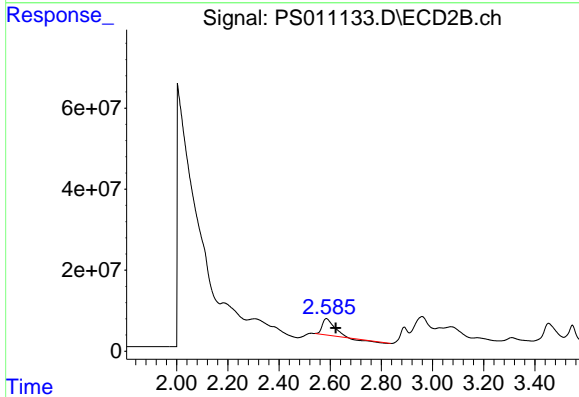
Volume Inj. : 2 µl
 Signal #1 Phase : Rtx-CLPesticides Signal #2 Phase: Rtx-CLPesticides2
 Signal #1 Info : 30M x 0.32mm x0.5 Signal #2 Info : 30M x 0.32mm x 0.25µm



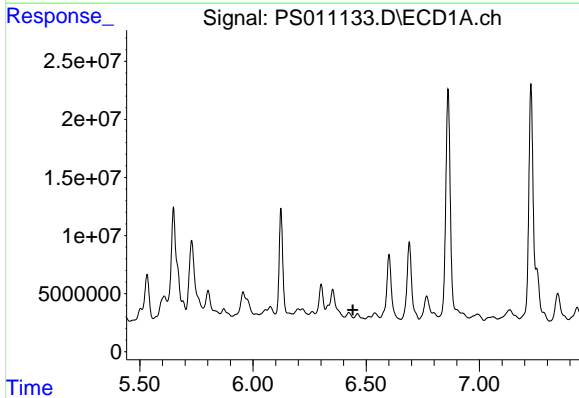


#1 Dalapon
 R.T.: 2.994 min
 Delta R.T.: -0.044 min
 Response: 34230647
 Conc: 30.57 ng/ml

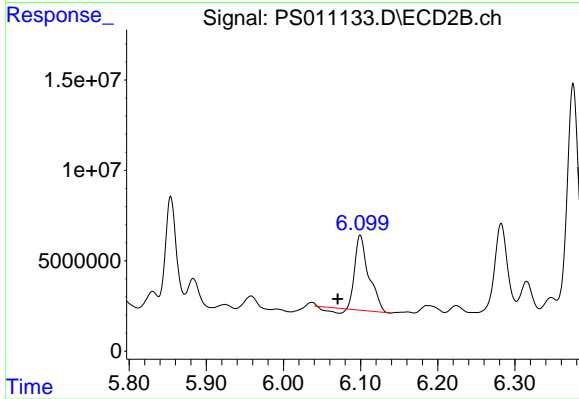
Instrument :
 ECD_S
 ClientSampled :



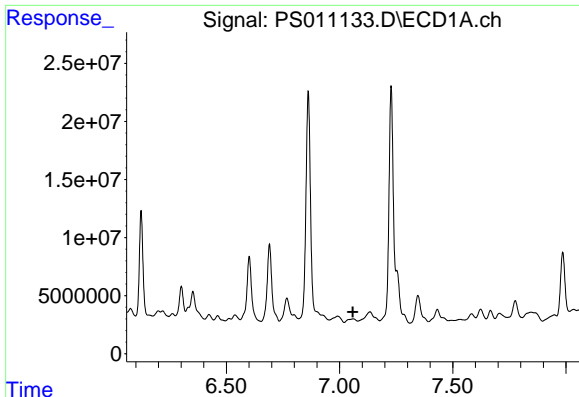
#1 Dalapon
 R.T.: 2.585 min
 Delta R.T.: -0.037 min
 Response: 119355857
 Conc: 158.22 ng/ml



#2 3,5-DICHLOROBENZOIC ACID
 R.T.: 0.000 min
 Exp R.T. : 6.441 min
 Response: 0
 Conc: N.D.



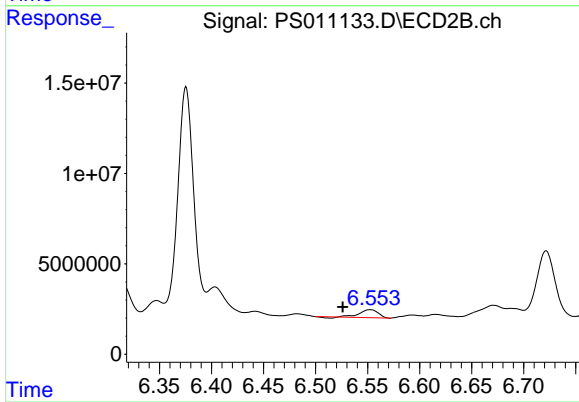
#2 3,5-DICHLOROBENZOIC ACID
 R.T.: 6.100 min
 Delta R.T.: 0.029 min
 Response: 49912674
 Conc: 59.93 ng/ml



#3 4-Nitrophenol

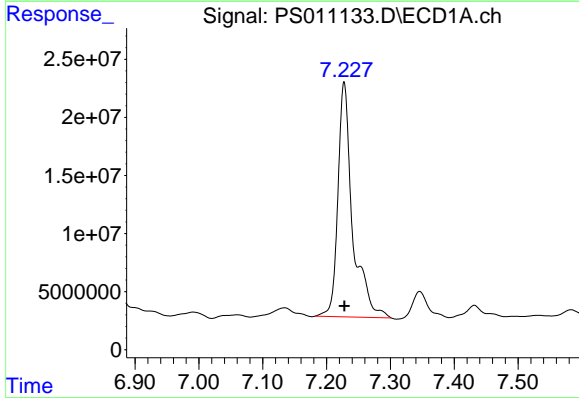
R.T.: 0.000 min
 Exp R.T.: 7.059 min
 Response: 0
 Conc: N.D.

Instrument :
 ECD_S
 ClientSampled :



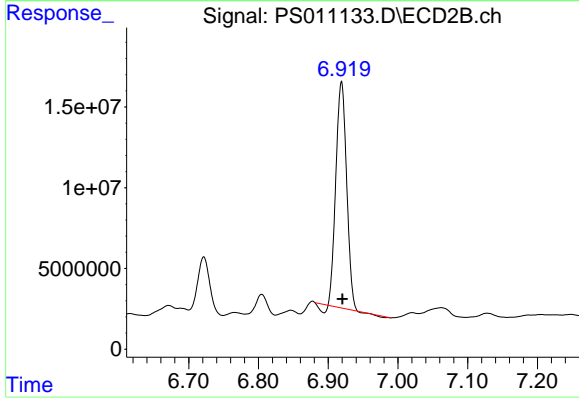
#3 4-Nitrophenol

R.T.: 6.552 min
 Delta R.T.: 0.026 min
 Response: 5131984
 Conc: 15.97 ng/ml



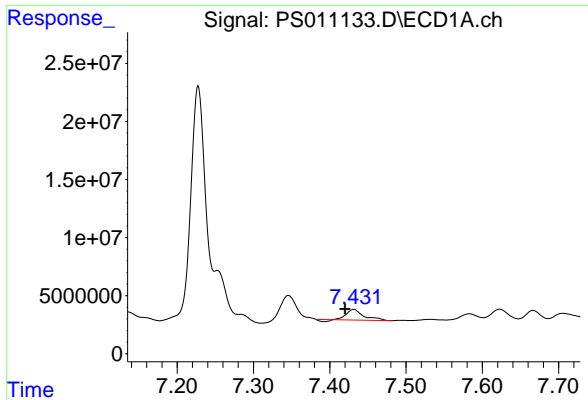
#4 2,4-DCAA

R.T.: 7.228 min
 Delta R.T.: 0.000 min
 Response: 322529936
 Conc: 355.67 ng/ml



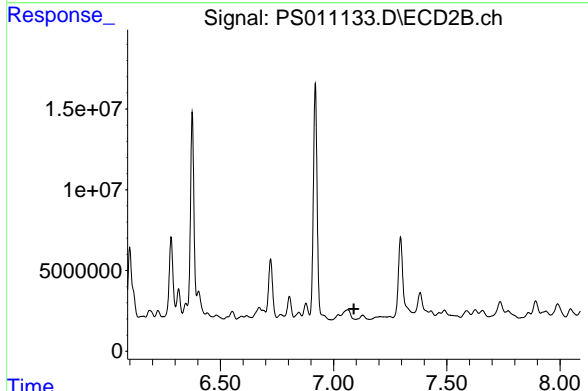
#4 2,4-DCAA

R.T.: 6.919 min
 Delta R.T.: -0.001 min
 Response: 147265438
 Conc: 265.79 ng/ml

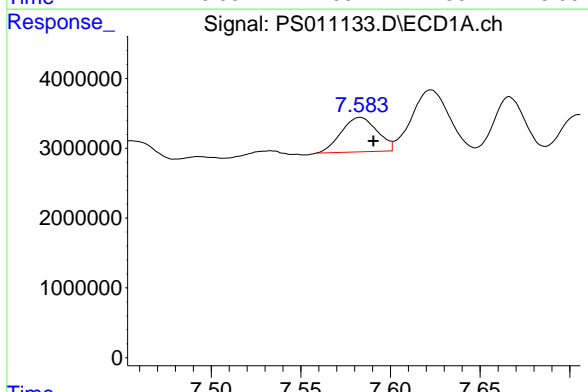


#5 DICAMBA
 R.T.: 7.431 min
 Delta R.T.: 0.011 min
 Response: 13475023
 Conc: 3.70 ng/ml

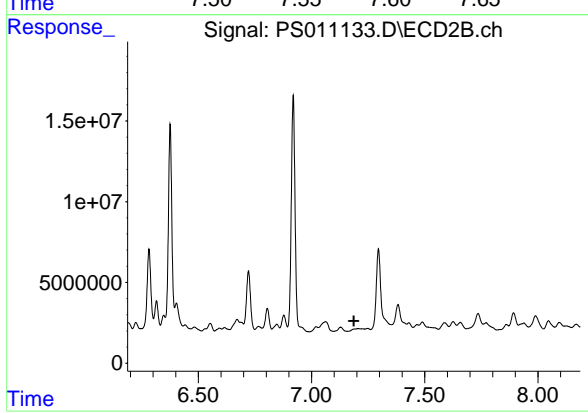
Instrument :
 ECD_S
 ClientSampled :



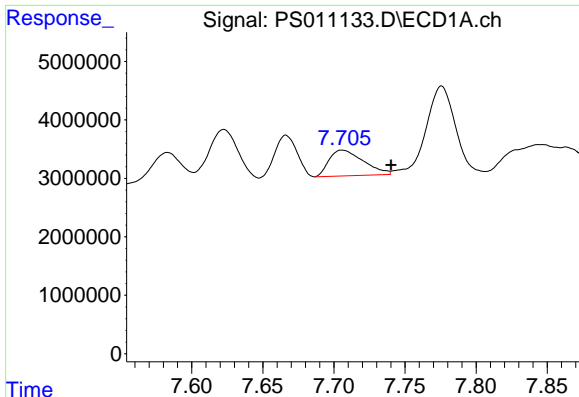
#5 DICAMBA
 R.T.: 0.000 min
 Exp R.T. : 7.089 min
 Response: 0
 Conc: N.D.



#6 MCPP
 R.T.: 7.583 min
 Delta R.T.: -0.008 min
 Response: 6910331
 Conc: 2.42 ug/ml



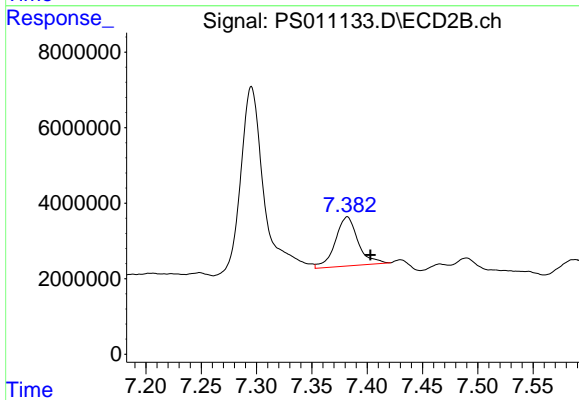
#6 MCPP
 R.T.: 0.000 min
 Exp R.T. : 7.187 min
 Response: 0
 Conc: N.D.



#7 MCPA

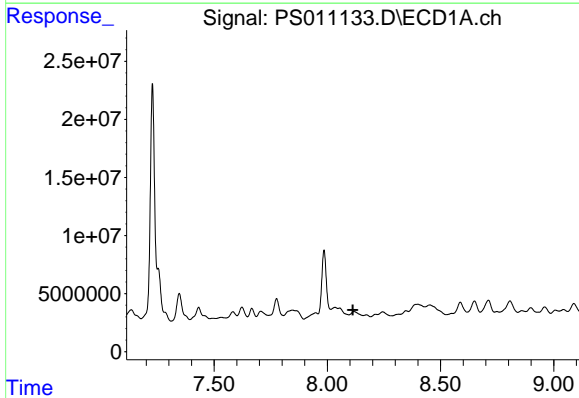
R.T.: 7.706 min
 Delta R.T.: -0.034 min
 Response: 7405188
 Conc: 1.86 ug/ml

Instrument :
 ECD_S
 ClientSampled :



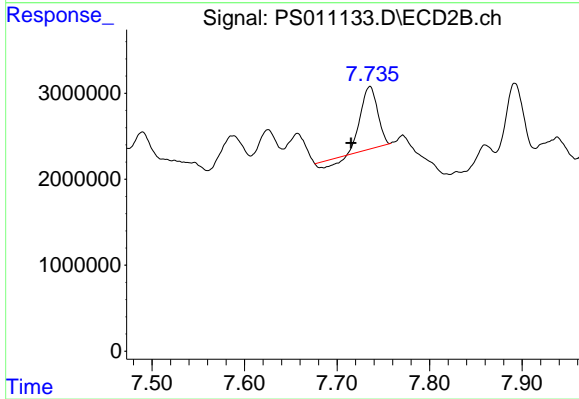
#7 MCPA

R.T.: 7.382 min
 Delta R.T.: -0.021 min
 Response: 18617771
 Conc: 6.75 ug/ml



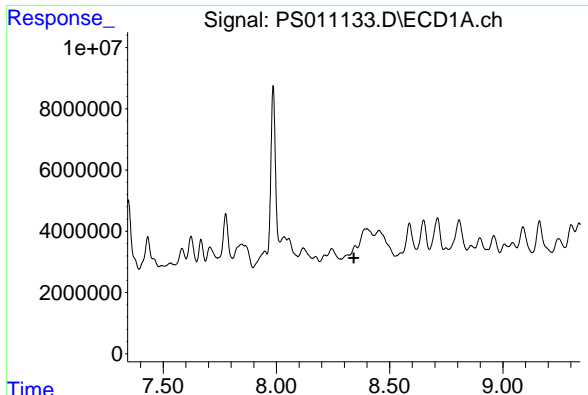
#8 DICHLORPROP

R.T.: 0.000 min
 Exp R.T. : 8.113 min
 Response: 0
 Conc: N.D.



#8 DICHLORPROP

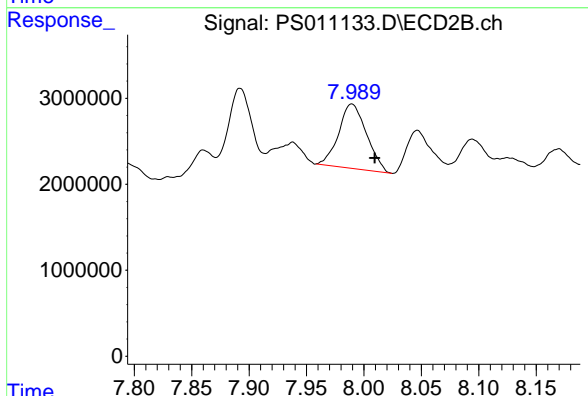
R.T.: 7.735 min
 Delta R.T.: 0.020 min
 Response: 8247036
 Conc: 14.05 ng/ml



#9 2,4-D

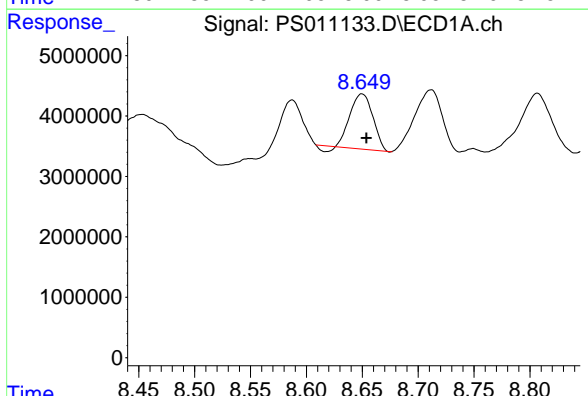
R.T.: 0.000 min
 Exp R.T.: 8.342 min
 Response: 0
 Conc: N.D.

Instrument :
 ECD_S
 ClientSampleId :



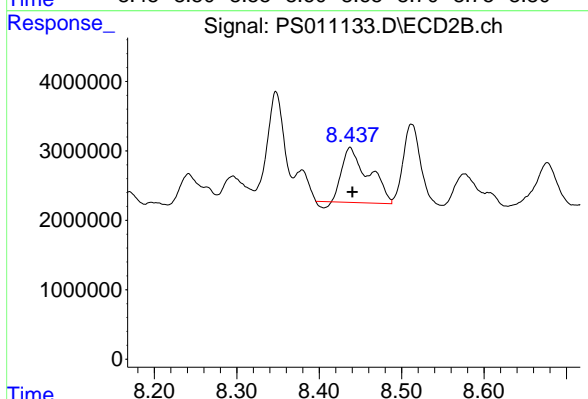
#9 2,4-D

R.T.: 7.989 min
 Delta R.T.: -0.020 min
 Response: 12688965
 Conc: 17.56 ng/ml



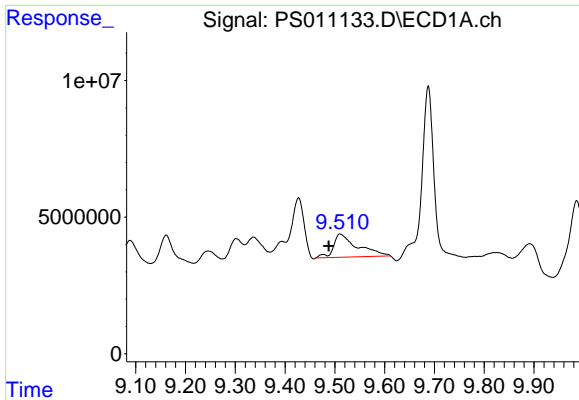
#10 Pentachlorophenol

R.T.: 8.649 min
 Delta R.T.: -0.004 min
 Response: 12523901
 Conc: 1.01 ng/ml



#10 Pentachlorophenol

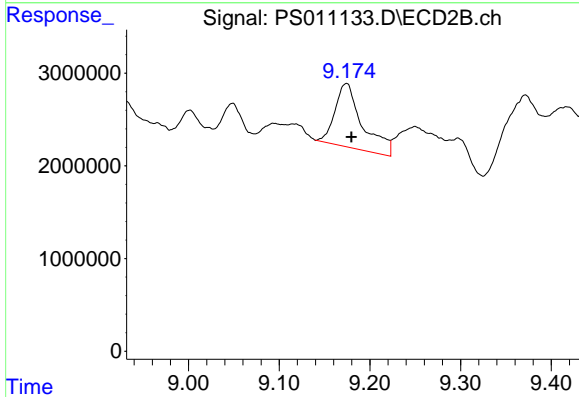
R.T.: 8.438 min
 Delta R.T.: -0.003 min
 Response: 17256022
 Conc: 2.48 ng/ml



#12 2,4,5-T

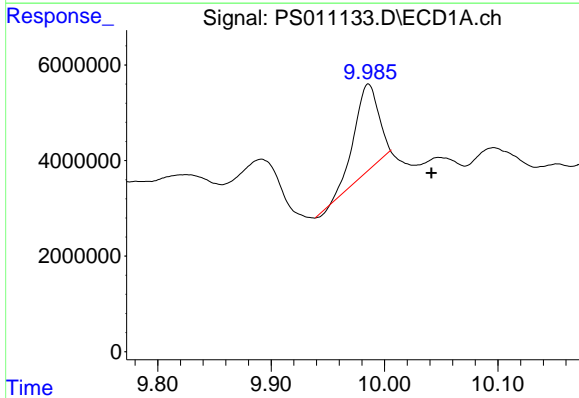
R.T.: 9.513 min
 Delta R.T.: 0.025 min
 Response: 27816507
 Conc: 5.97 ng/ml

Instrument :
 ECD_S
 ClientSampleId :



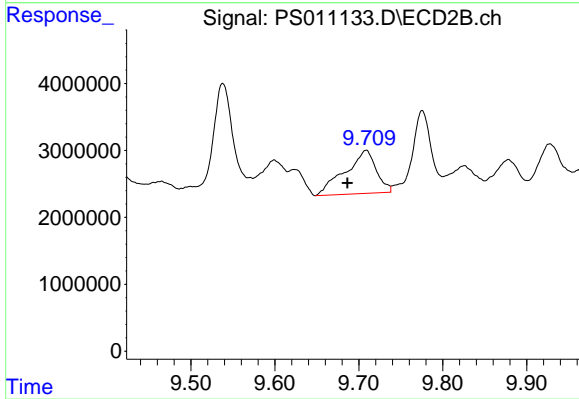
#12 2,4,5-T

R.T.: 9.174 min
 Delta R.T.: -0.006 min
 Response: 14415623
 Conc: 4.84 ng/ml



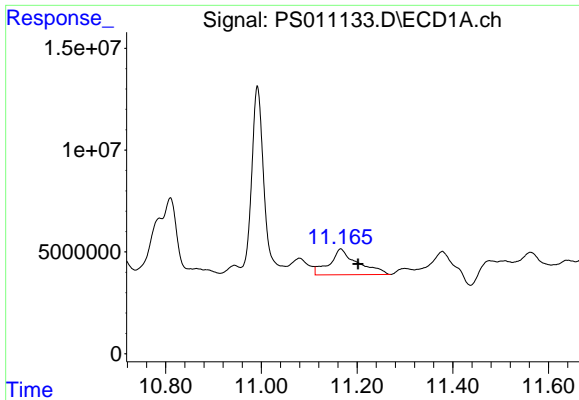
#13 2,4-DB

R.T.: 9.986 min
 Delta R.T.: -0.055 min
 Response: 26892337
 Conc: 45.25 ng/ml



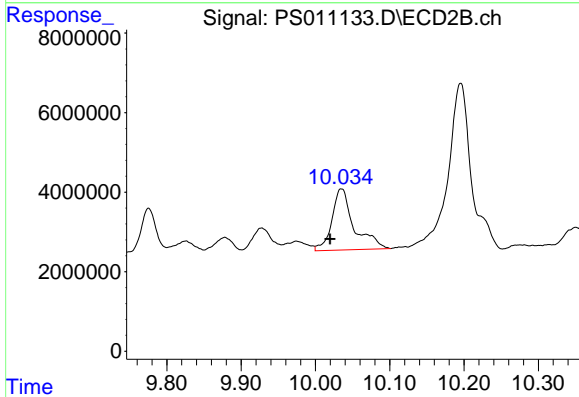
#13 2,4-DB

R.T.: 9.708 min
 Delta R.T.: 0.022 min
 Response: 16638857
 Conc: 40.49 ng/ml

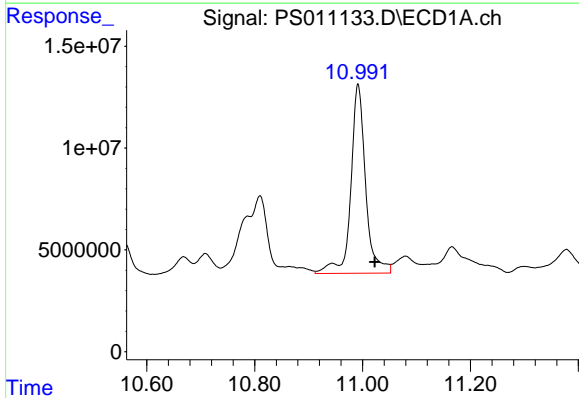


#14 DINOSEB
 R.T.: 11.166 min
 Delta R.T.: -0.036 min
 Response: 5147666
 Conc: 14.37 ng/ml

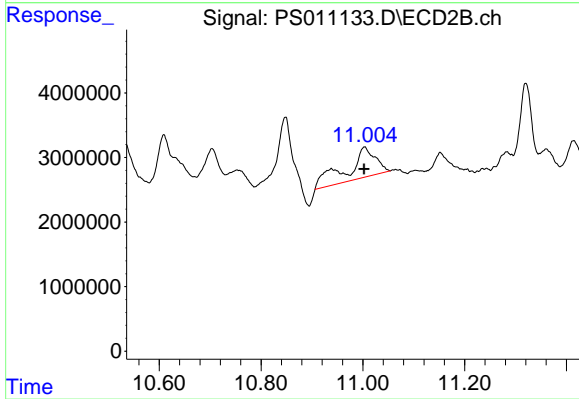
Instrument :
 ECD_S
 ClientSampleId :



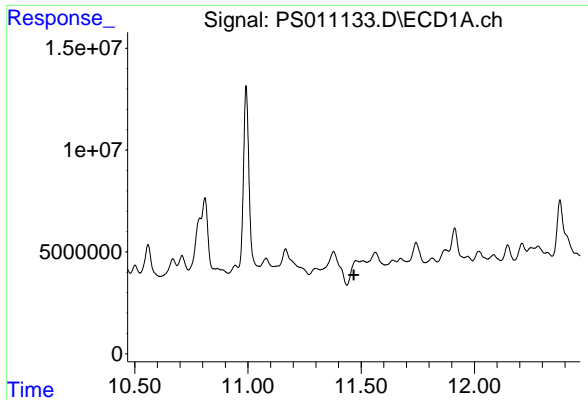
#14 DINOSEB
 R.T.: 10.035 min
 Delta R.T.: 0.015 min
 Response: 31790215
 Conc: 15.27 ng/ml



#15 Picloram
 R.T.: 10.992 min
 Delta R.T.: -0.030 min
 Response: 176445517
 Conc: 31.47 ng/ml



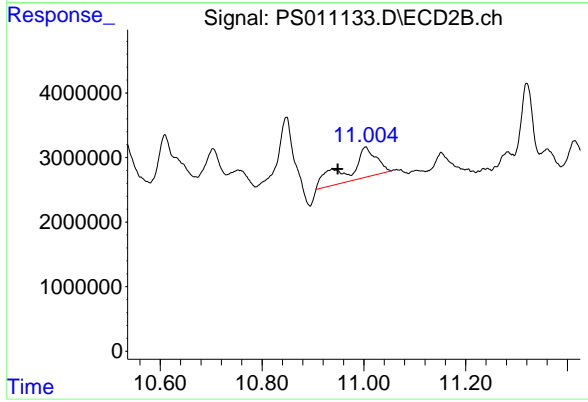
#15 Picloram
 R.T.: 11.003 min
 Delta R.T.: 0.001 min
 Response: 18405901
 Conc: 4.39 ng/ml



#16 DCPA

R.T.: 0.000 min
 Exp R.T.: 11.468 min
 Response: 0
 Conc: N.D.

Instrument :
 ECD_S
 ClientSampleId :



#16 DCPA

R.T.: 11.003 min
 Delta R.T.: 0.055 min
 Response: 18405901
 Conc: 4.94 ng/ml