

Data Path : Z:\pestpcbsrv\HPCHEM1\ECD_S\Data\PS071019\
 Data File : PS005437.D
 Signal(s) : Signal #1: ECD1A.ch Signal #2: ECD2B.ch
 Acq On : 10 Jul 2019 08:21
 Operator : SM\AJ
 Sample : I.BLK
 Misc :
 ALS Vial : 2 Sample Multiplier: 1

Instrument :
 ECD_S
 ClientSampleId :
 I.BLK

Integration File signal 1: autoint1.e
 Integration File signal 2: autoint2.e
 Quant Time: Jul 10 12:13:13 2019
 Quant Method : Z:\pestpcbsrv\HPCHEM1\ECD_S\Method\PS061919.M
 Quant Title : 8080.M
 QLast Update : Thu Jun 20 11:04:04 2019
 Response via : Initial Calibration
 Integrator: ChemStation

Volume Inj. : 2 µl
 Signal #1 Phase : Rtx-CLPesticides Signal #2 Phase: Rtx-CLPesticides2
 Signal #1 Info : 30M x 0.32mm x0.5 Signal #2 Info : 30M x 0.32mm x 0.25µm

Compound	RT#1	RT#2	Resp#1	Resp#2	ng/ml	ng/ml

System Monitoring Compounds						
4) S 2,4-DCAA	5.586	5.283	578.8E6	391.6E6	394.303	390.665
Target Compounds						
15) T Picloram	9.130	0.000	71813142	0	6.249	N.D. #

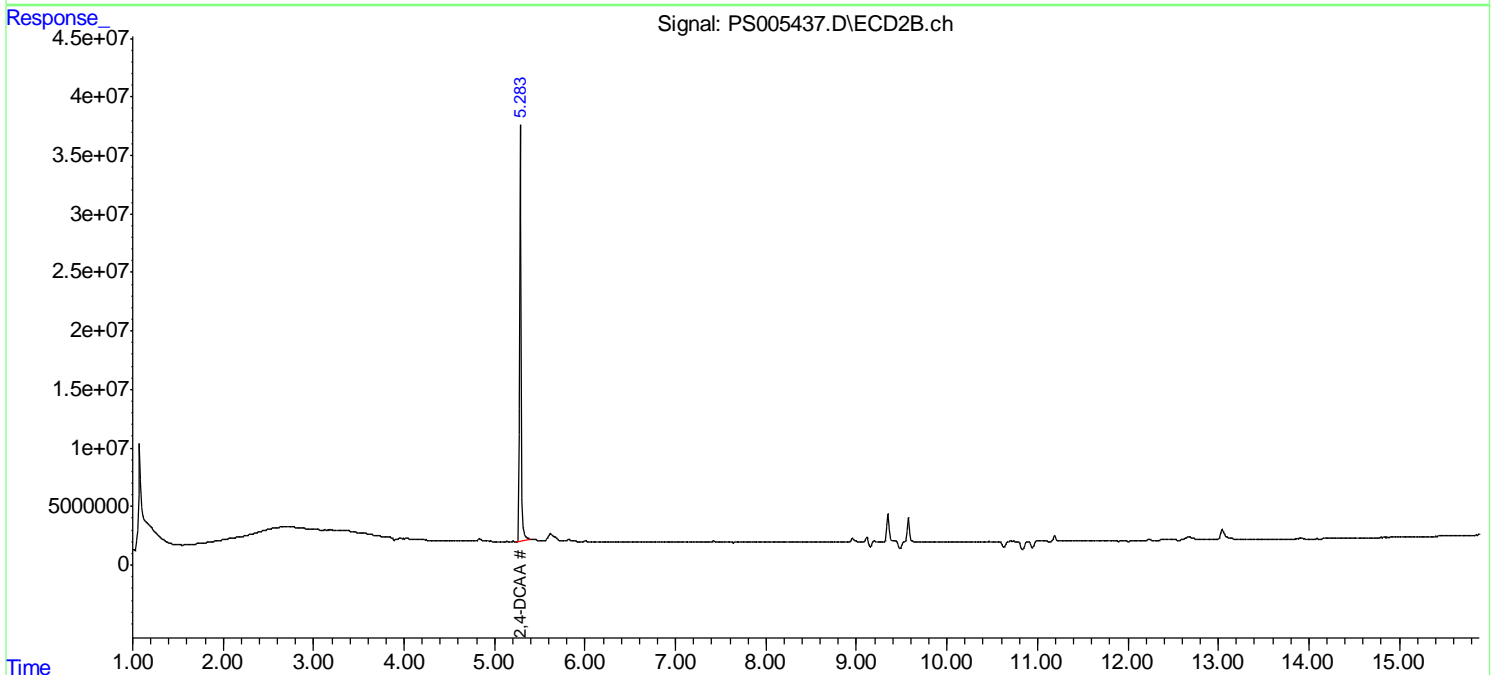
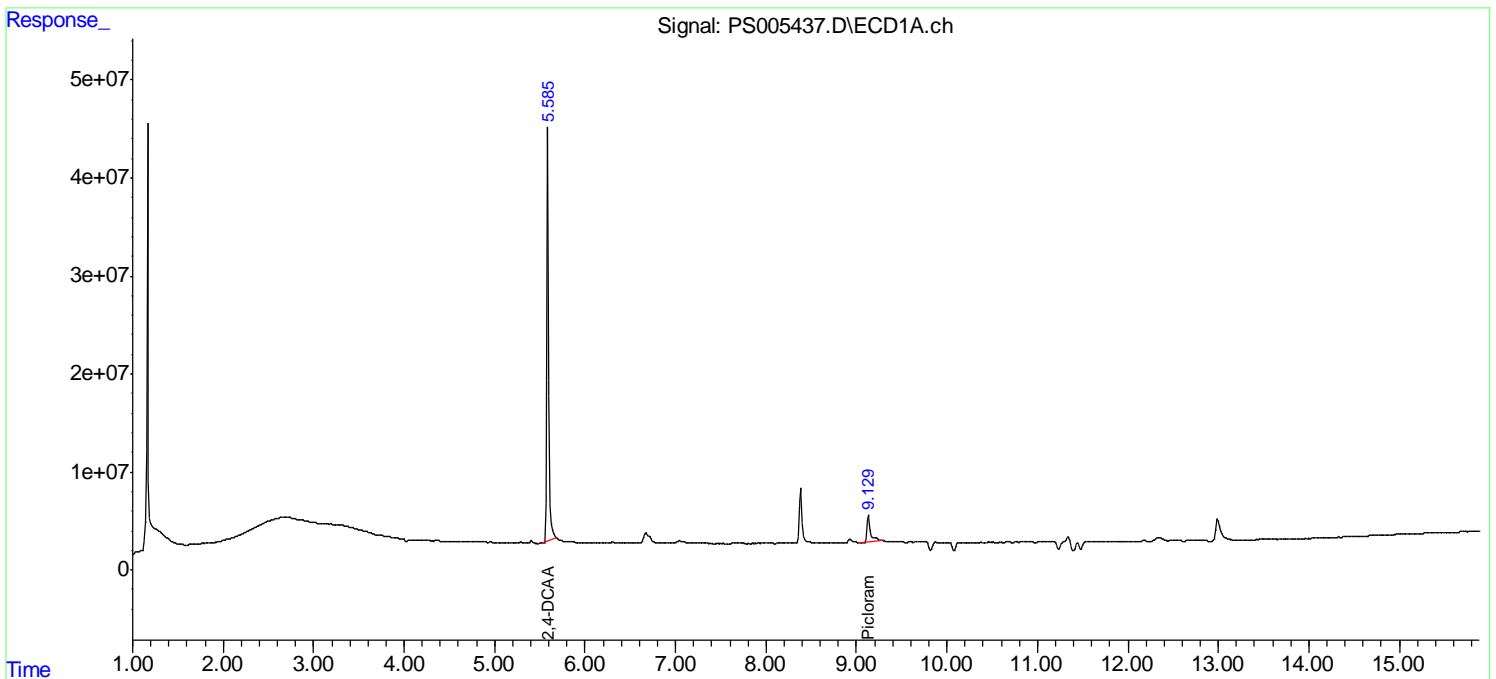
(f)=RT Delta > 1/2 Window (#)=Amounts differ by > 25% (m)=manual int.

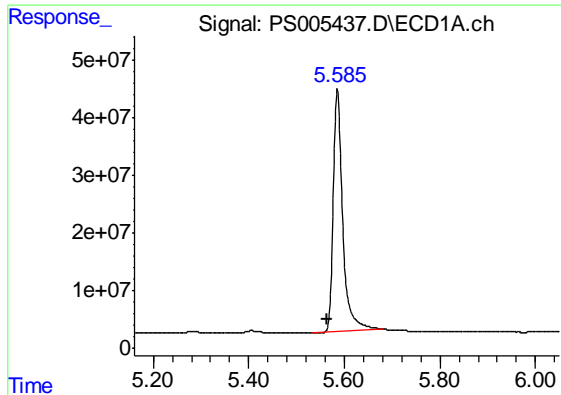
Data Path : Z:\pestpcbsrv\HPCHEM1\ECD_S\Data\PS071019\
 Data File : PS005437.D
 Signal(s) : Signal #1: ECD1A.ch Signal #2: ECD2B.ch
 Acq On : 10 Jul 2019 08:21
 Operator : SM\AJ
 Sample : I.BLK
 Misc :
 ALS Vial : 2 Sample Multiplier: 1

Instrument :
 ECD_S
 ClientSampled :
 I.BLK

Integration File signal 1: autoint1.e
 Integration File signal 2: autoint2.e
 Quant Time: Jul 10 12:13:13 2019
 Quant Method : Z:\pestpcbsrv\HPCHEM1\ECD_S\Method\PS061919.M
 Quant Title : 8080.M
 QLast Update : Thu Jun 20 11:04:04 2019
 Response via : Initial Calibration
 Integrator: ChemStation

Volume Inj. : 2 µl
 Signal #1 Phase : Rtx-CLPesticides Signal #2 Phase: Rtx-CLPesticides2
 Signal #1 Info : 30M x 0.32mm x0.5 Signal #2 Info : 30M x 0.32mm x 0.25µm

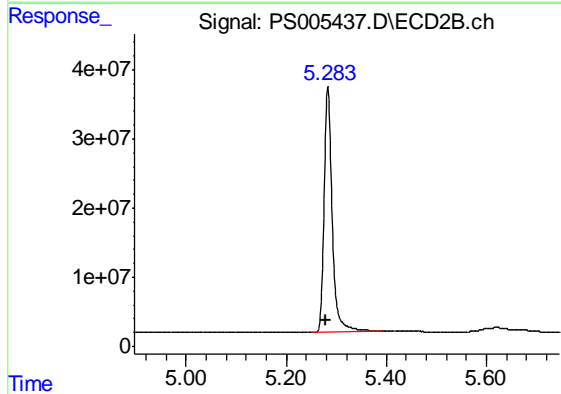




#4 2,4-DCAA

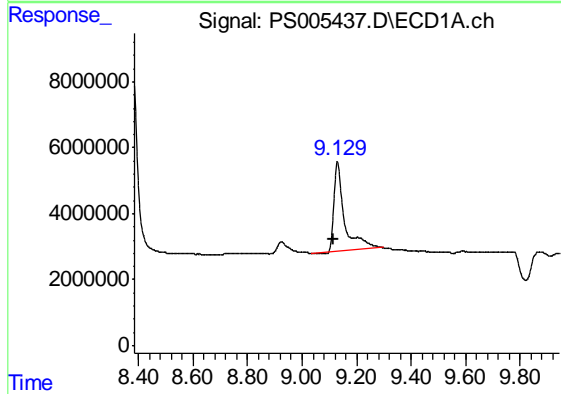
R.T.: 5.586 min
 Delta R.T.: 0.022 min
 Response: 578794069
 Conc: 394.30 ng/ml

Instrument :
 ECD_S
 ClientSampled :
 I.BLK



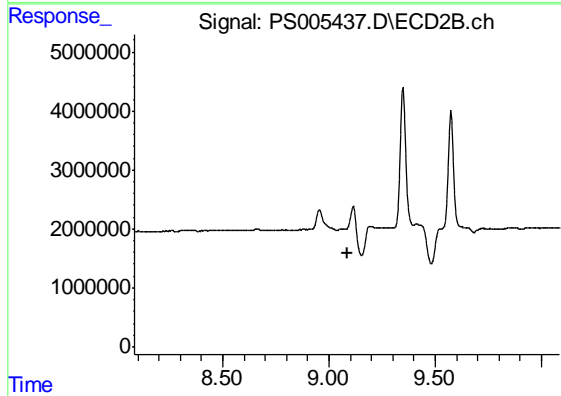
#4 2,4-DCAA

R.T.: 5.283 min
 Delta R.T.: 0.004 min
 Response: 391590695
 Conc: 390.67 ng/ml



#15 Picloram

R.T.: 9.130 min
 Delta R.T.: 0.014 min
 Response: 71813142
 Conc: 6.25 ng/ml



#15 Picloram

R.T.: 0.000 min
 Exp R.T. : 9.085 min
 Response: 0
 Conc: N.D.