

Data Path : Z:\pestpcbsrv\HPCHEM1\ECD_S\Data\PS071019\
 Data File : PS005445.D
 Signal(s) : Signal #1: ECD1A.ch Signal #2: ECD2B.ch
 Acq On : 10 Jul 2019 13:58
 Operator : SM\AJ
 Sample : K3681-02
 Misc :
 ALS Vial : 9 Sample Multiplier: 1

Instrument :
 ECD_S
 ClientSampleId :
 TOP-SOIL-07-01-19

Integration File signal 1: autoint1.e
 Integration File signal 2: autoint2.e
 Quant Time: Jul 10 15:21:32 2019
 Quant Method : Z:\pestpcbsrv\HPCHEM1\ECD_S\Method\PS061919.M
 Quant Title : 8080.M
 QLast Update : Thu Jun 20 11:04:04 2019
 Response via : Initial Calibration
 Integrator: ChemStation

Volume Inj. : 2 µl
 Signal #1 Phase : Rtx-CLPesticides Signal #2 Phase: Rtx-CLPesticides2
 Signal #1 Info : 30M x 0.32mm x0.5 Signal #2 Info : 30M x 0.32mm x 0.25µm

Compound	RT#1	RT#2	Resp#1	Resp#2	ng/ml	ng/ml

System Monitoring Compounds						
4) S 2,4-DCAA	5.572	5.288	145.1E6	47696850	98.824	47.584 #
Target Compounds						
2) T 3,5-DICHL...	0.000	4.607	0	167.3E6	N.D.	126.832
3) T 4-Nitroph...	5.374	0.000	27969318	0	38.616	N.D. #
5) T DICAMBA	5.673	5.394	13568060	23097790	2.378	6.170 #
6) T MCPP	5.882	5.509	9506885	20899096	2.172	7.503 #
7) T MCPA	6.063	5.678	61082760	46924250	9.727	11.584
8) T DICHLORPROP	6.392	5.984	11269940	23268572	7.881	24.099 #
9) T 2,4-D	0.000	6.235	0	23486256	N.D.	21.059
10) T Pentachlo...	6.839	6.629	42661015	17359732	2.168	1.350 #
11) T 2,4,5-TP ...	0.000	6.942	0	113.4E6	N.D.	21.296
12) T 2,4,5-T	0.000	7.341	0	41241470	N.D.	8.085
13) T 2,4-DB	8.244	7.865	60754554	33954063	52.305	52.009
14) T DINOSEB	0.000	8.174	0	80059506	N.D.	19.801
15) T Picloram	9.062	9.101	19772696	31563012	1.721	4.183 #
16) T DCPA	9.572	9.101	58121566	31563012	5.827	4.637

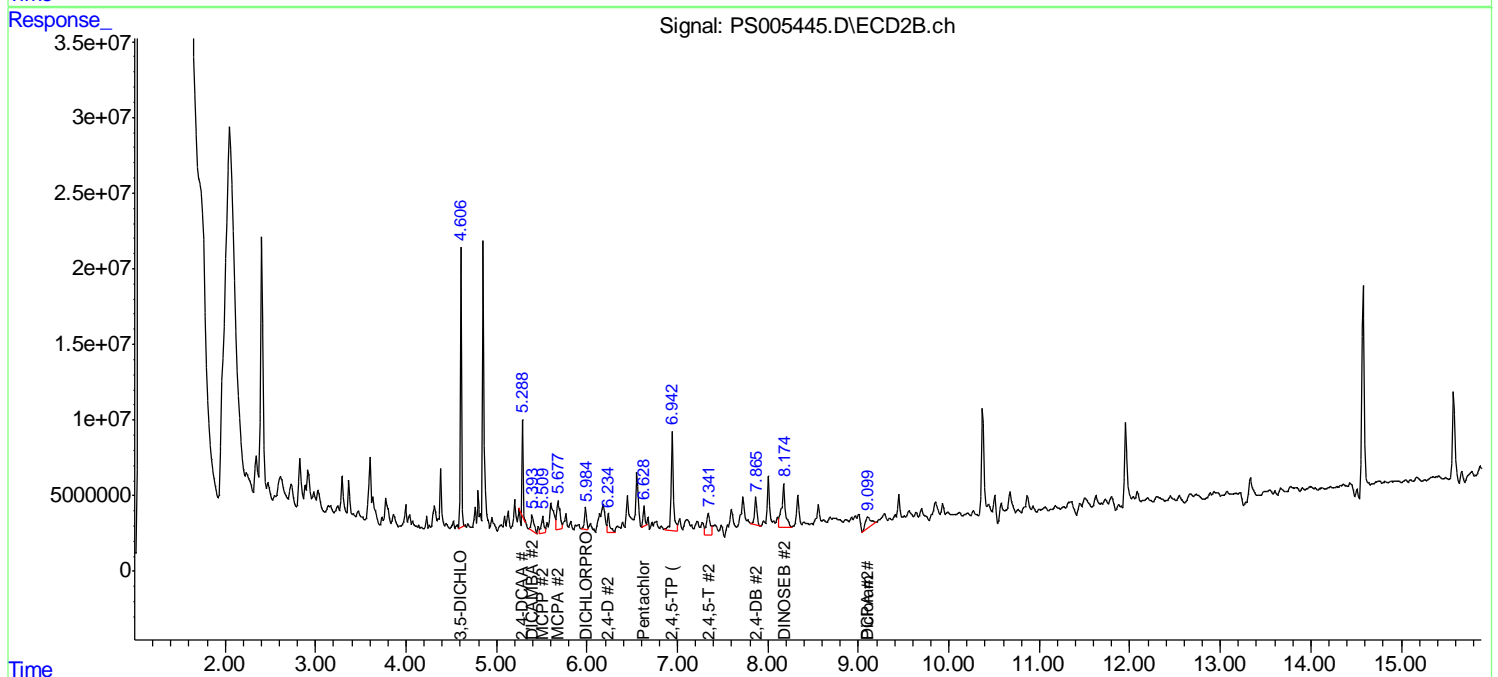
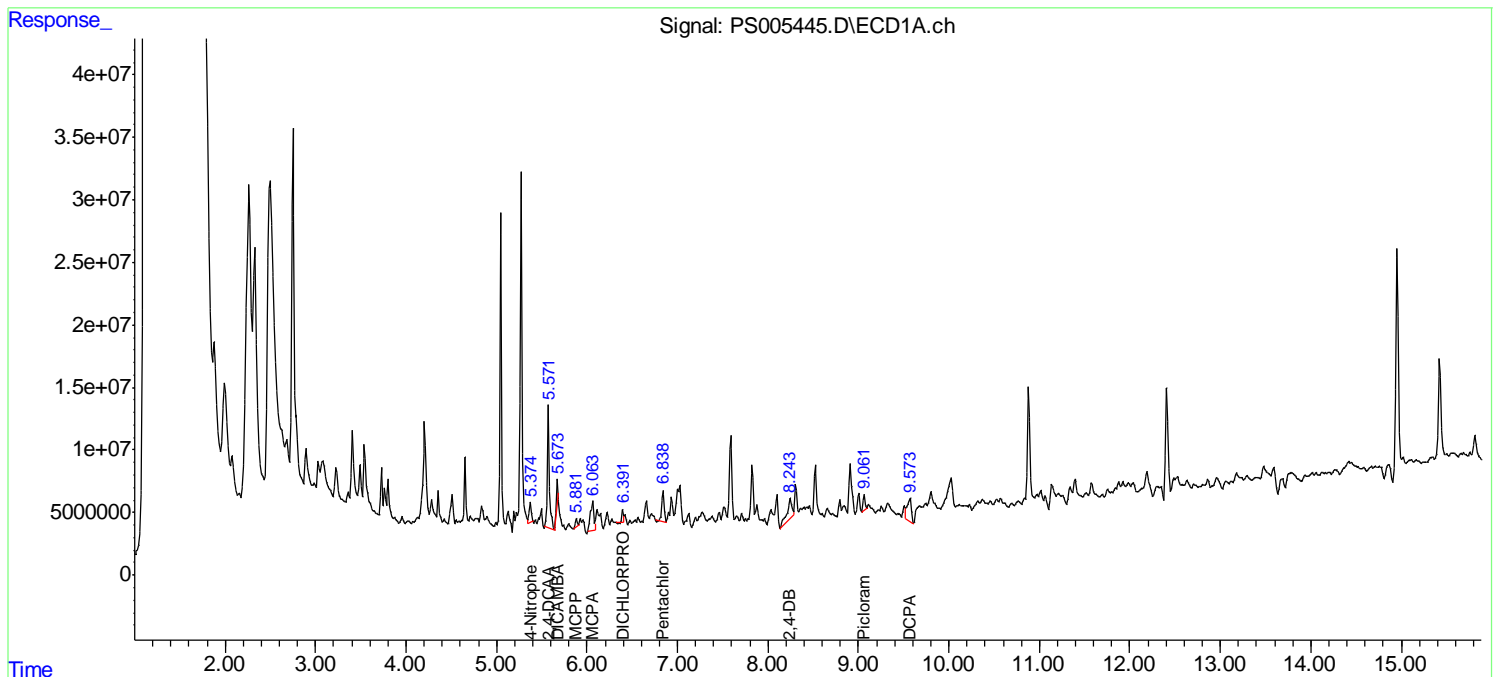
(f)=RT Delta > 1/2 Window (#)=Amounts differ by > 25% (m)=manual int.

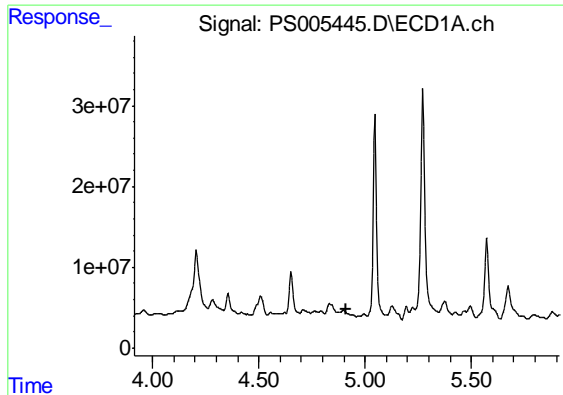
Data Path : Z:\pestpcbsrv\HPCHEM1\ECD_S\Data\PS071019\
 Data File : PS005445.D
 Signal(s) : Signal #1: ECD1A.ch Signal #2: ECD2B.ch
 Acq On : 10 Jul 2019 13:58
 Operator : SM\AJ
 Sample : K3681-02
 Misc :
 ALS Vial : 9 Sample Multiplier: 1

Instrument :
 ECD_S
 ClientSampled :
 TOP-SOIL-07-01-19

Integration File signal 1: autoint1.e
 Integration File signal 2: autoint2.e
 Quant Time: Jul 10 15:21:32 2019
 Quant Method : Z:\pestpcbsrv\HPCHEM1\ECD_S\Method\PS061919.M
 Quant Title : 8080.M
 QLast Update : Thu Jun 20 11:04:04 2019
 Response via : Initial Calibration
 Integrator: ChemStation

Volume Inj. : 2 µl
 Signal #1 Phase : Rtx-CLPesticides Signal #2 Phase: Rtx-CLPesticides2
 Signal #1 Info : 30M x 0.32mm x0.5 Signal #2 Info : 30M x 0.32mm x 0.25µm

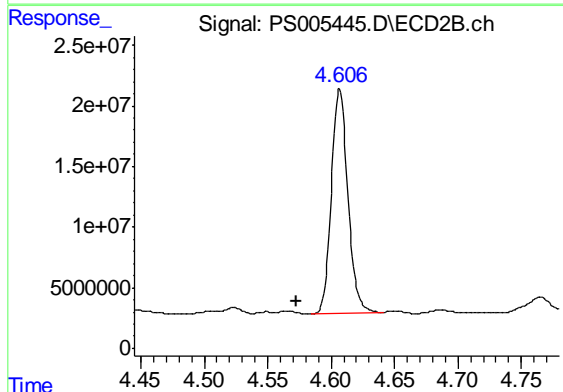




#2 3,5-DICHLOROBENZOIC ACID

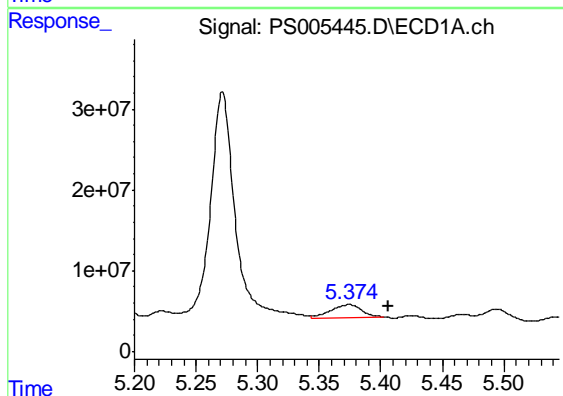
R.T.: 0.000 min
 Exp R.T. : 4.914 min
 Response: 0
 Conc: N.D.

Instrument :
 ECD_S
 ClientSampleId :
 TOP-SOIL-07-01-19



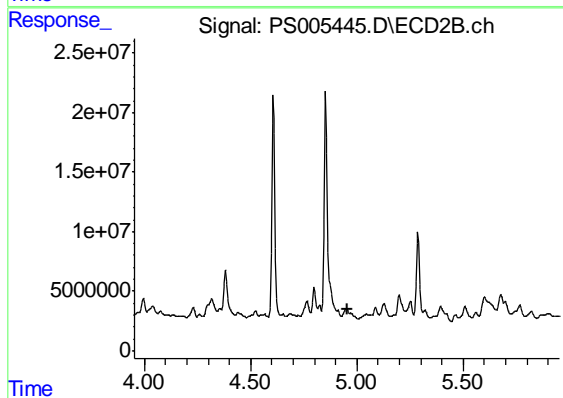
#2 3,5-DICHLOROBENZOIC ACID

R.T.: 4.607 min
 Delta R.T.: 0.034 min
 Response: 167254426
 Conc: 126.83 ng/ml



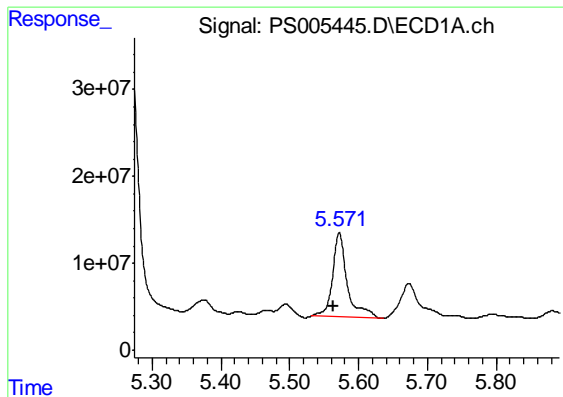
#3 4-Nitrophenol

R.T.: 5.374 min
 Delta R.T.: -0.032 min
 Response: 27969318
 Conc: 38.62 ng/ml



#3 4-Nitrophenol

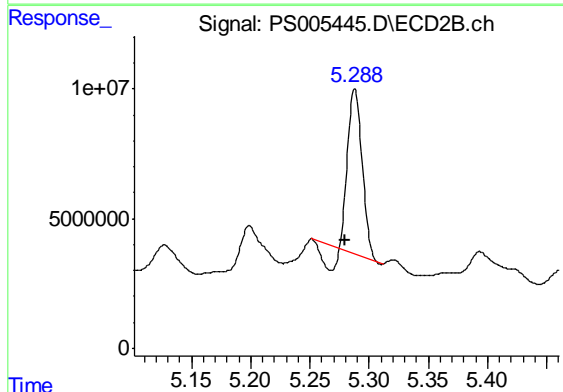
R.T.: 0.000 min
 Exp R.T. : 4.953 min
 Response: 0
 Conc: N.D.



#4 2,4-DCAA

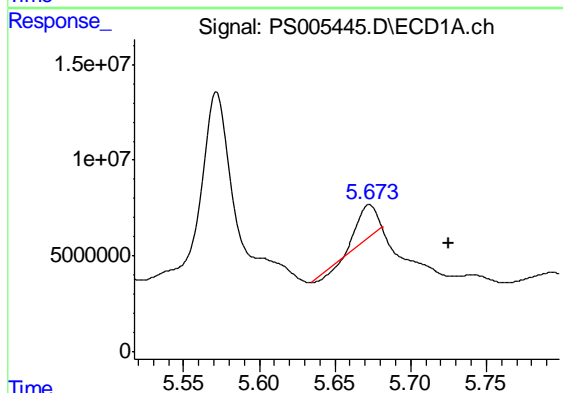
R.T.: 5.572 min
 Delta R.T.: 0.008 min
 Response: 145062625
 Conc: 98.82 ng/ml

Instrument :
 ECD_S
 ClientSampleId :
 TOP-SOIL-07-01-19



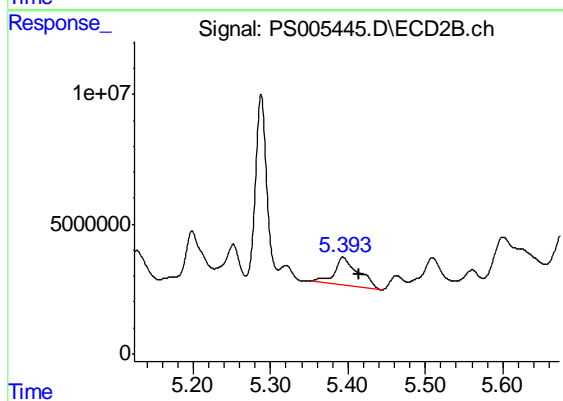
#4 2,4-DCAA

R.T.: 5.288 min
 Delta R.T.: 0.008 min
 Response: 47696850
 Conc: 47.58 ng/ml



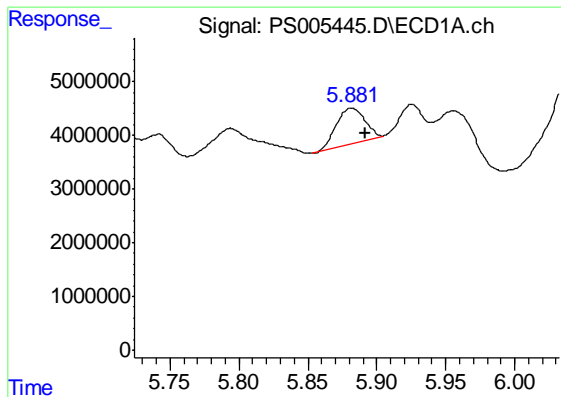
#5 DICAMBA

R.T.: 5.673 min
 Delta R.T.: -0.052 min
 Response: 13568060
 Conc: 2.38 ng/ml



#5 DICAMBA

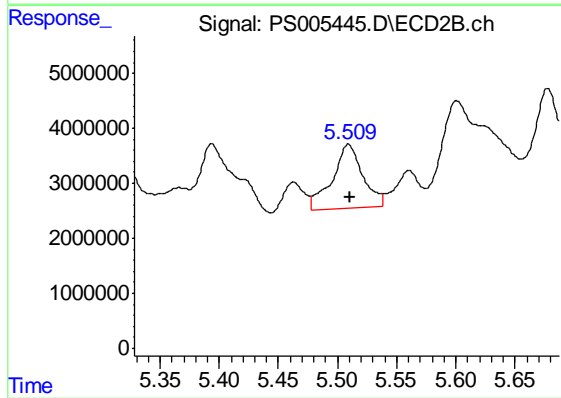
R.T.: 5.394 min
 Delta R.T.: -0.020 min
 Response: 23097790
 Conc: 6.17 ng/ml



#6 MCPP

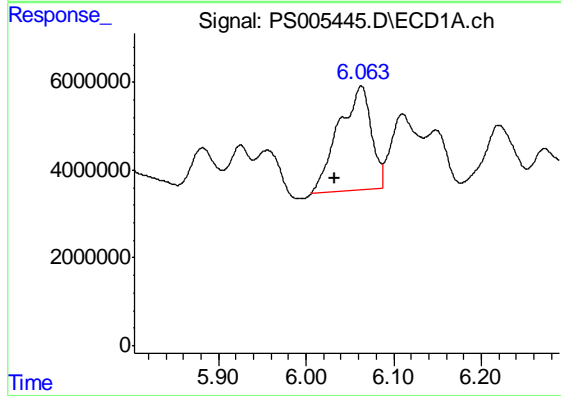
R.T.: 5.882 min
 Delta R.T.: -0.010 min
 Response: 9506885
 Conc: 2.17 ug/ml

Instrument :
 ECD_S
 ClientSampleId :
 TOP-SOIL-07-01-19



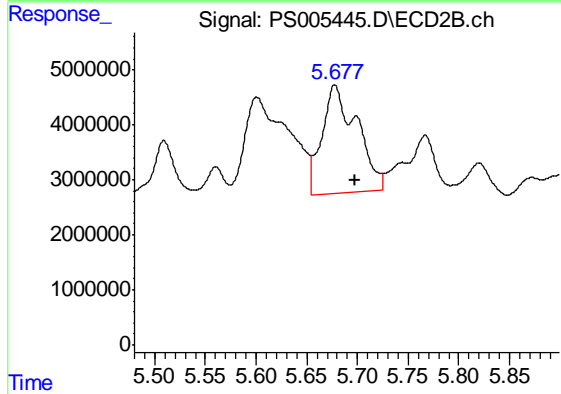
#6 MCPP

R.T.: 5.509 min
 Delta R.T.: -0.001 min
 Response: 20899096
 Conc: 7.50 ug/ml



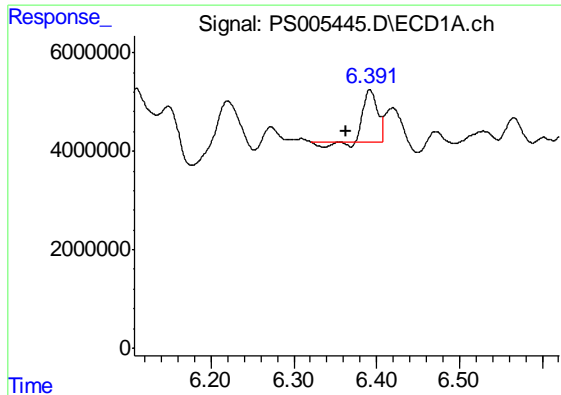
#7 MCPA

R.T.: 6.063 min
 Delta R.T.: 0.031 min
 Response: 61082760
 Conc: 9.73 ug/ml



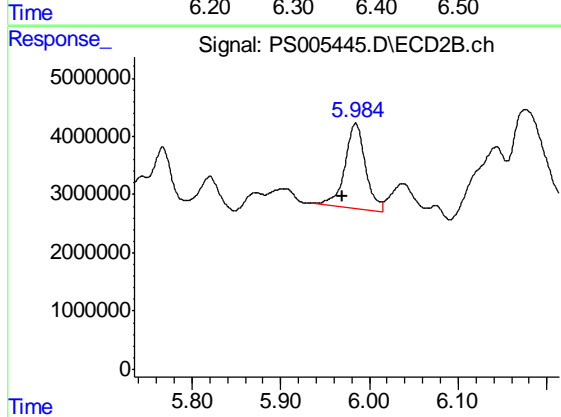
#7 MCPA

R.T.: 5.678 min
 Delta R.T.: -0.020 min
 Response: 46924250
 Conc: 11.58 ug/ml

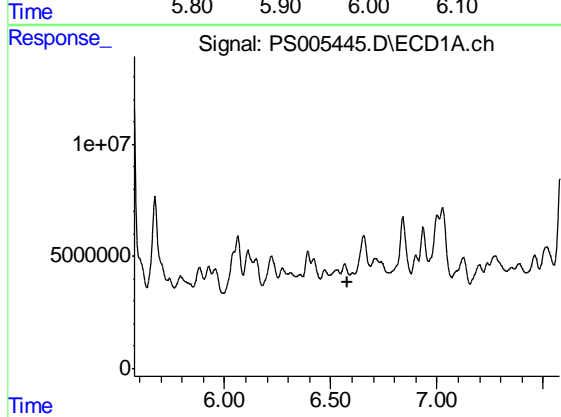


#8 DICHLORPROP
 R.T.: 6.392 min
 Delta R.T.: 0.029 min
 Response: 11269940
 Conc: 7.88 ng/ml

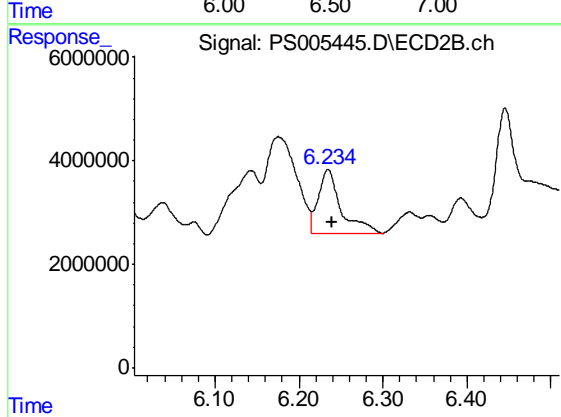
Instrument :
 ECD_S
 ClientSampleId :
 TOP-SOIL-07-01-19



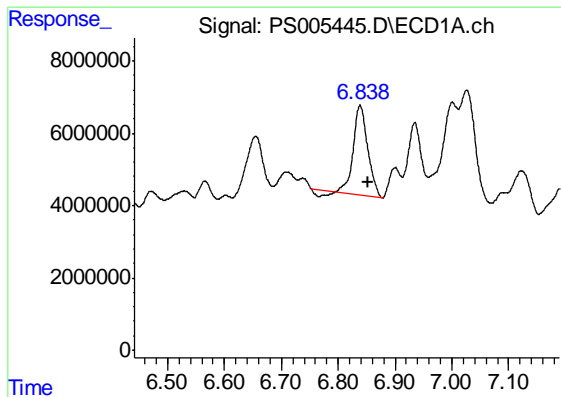
#8 DICHLORPROP
 R.T.: 5.984 min
 Delta R.T.: 0.015 min
 Response: 23268572
 Conc: 24.10 ng/ml



#9 2,4-D
 R.T.: 0.000 min
 Exp R.T. : 6.576 min
 Response: 0
 Conc: N.D.



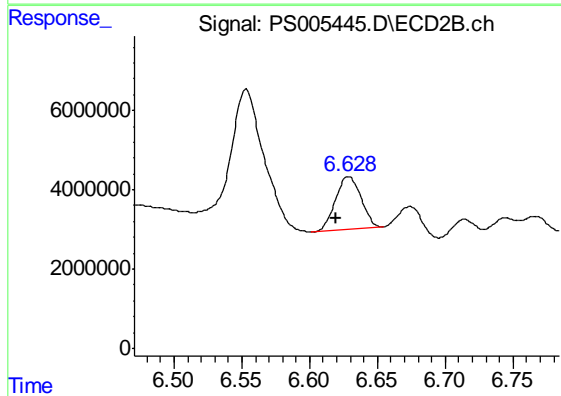
#9 2,4-D
 R.T.: 6.235 min
 Delta R.T.: -0.005 min
 Response: 23486256
 Conc: 21.06 ng/ml



#10 Pentachlorophenol

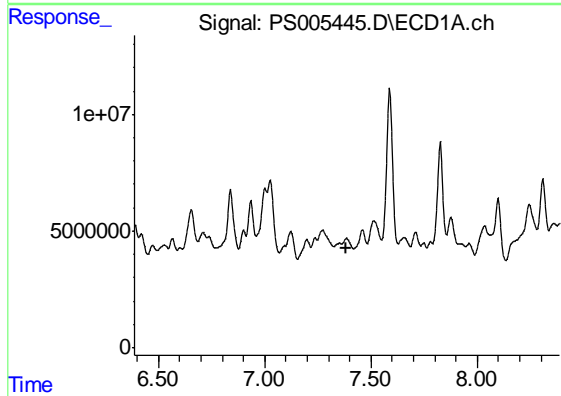
R.T.: 6.839 min
 Delta R.T.: -0.013 min
 Response: 42661015
 Conc: 2.17 ng/ml

Instrument :
 ECD_S
 ClientSampleId :
 TOP-SOIL-07-01-19



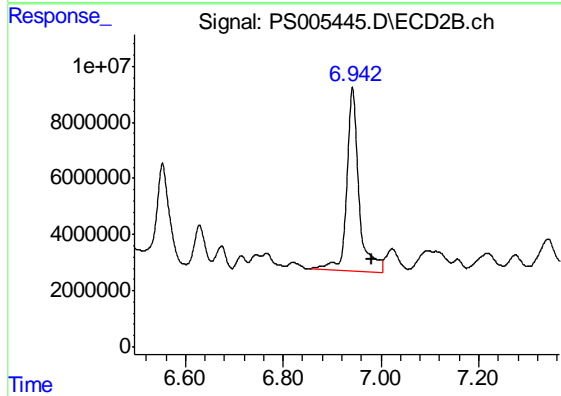
#10 Pentachlorophenol

R.T.: 6.629 min
 Delta R.T.: 0.010 min
 Response: 17359732
 Conc: 1.35 ng/ml



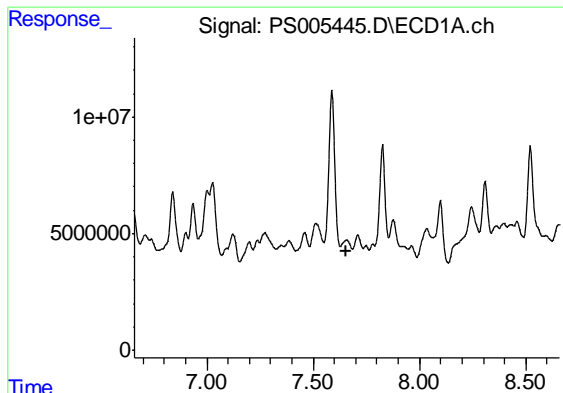
#11 2,4,5-TP (SILVEX)

R.T.: 0.000 min
 Exp R.T. : 7.387 min
 Response: 0
 Conc: N.D.



#11 2,4,5-TP (SILVEX)

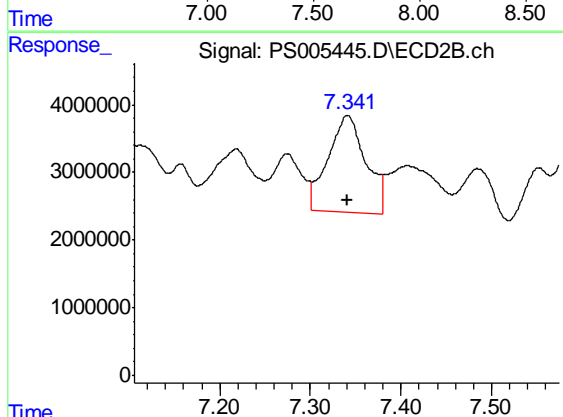
R.T.: 6.942 min
 Delta R.T.: -0.039 min
 Response: 113406959
 Conc: 21.30 ng/ml



#12 2,4,5-T

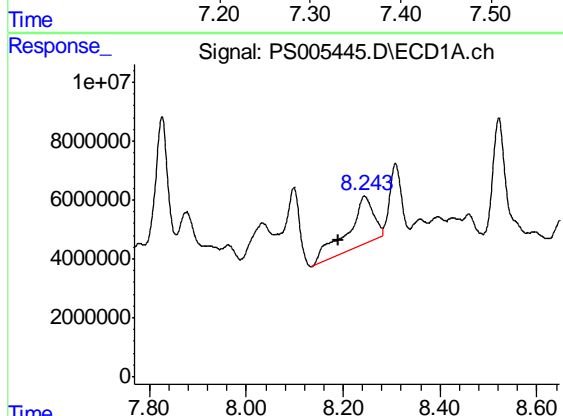
R.T.: 0.000 min
 Exp R.T. : 7.659 min
 Response: 0
 Conc: N.D.

Instrument :
 ECD_S
 ClientSampleId :
 TOP-SOIL-07-01-19



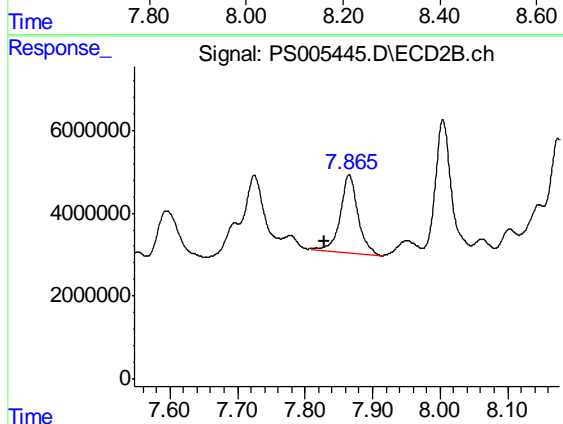
#12 2,4,5-T

R.T.: 7.341 min
 Delta R.T.: 0.000 min
 Response: 41241470
 Conc: 8.09 ng/ml



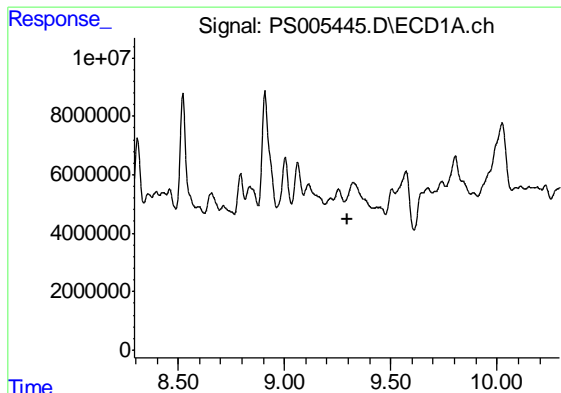
#13 2,4-DB

R.T.: 8.244 min
 Delta R.T.: 0.055 min
 Response: 60754554
 Conc: 52.30 ng/ml



#13 2,4-DB

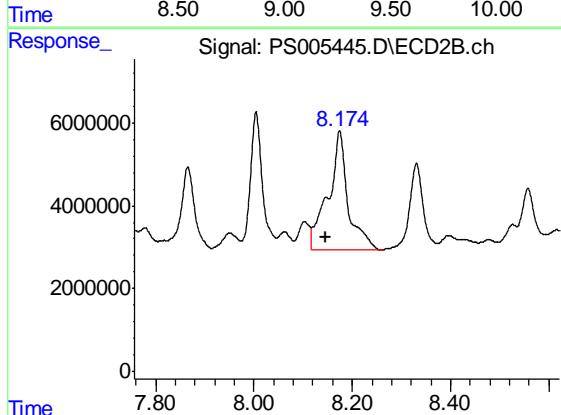
R.T.: 7.865 min
 Delta R.T.: 0.036 min
 Response: 33954063
 Conc: 52.01 ng/ml



#14 DINOSEB

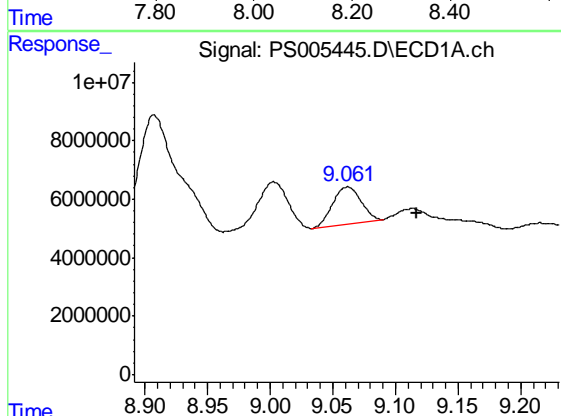
R.T.: 0.000 min
 Exp R.T. : 9.294 min
 Response: 0
 Conc: N.D.

Instrument :
 ECD_S
 ClientSampleId :
 TOP-SOIL-07-01-19



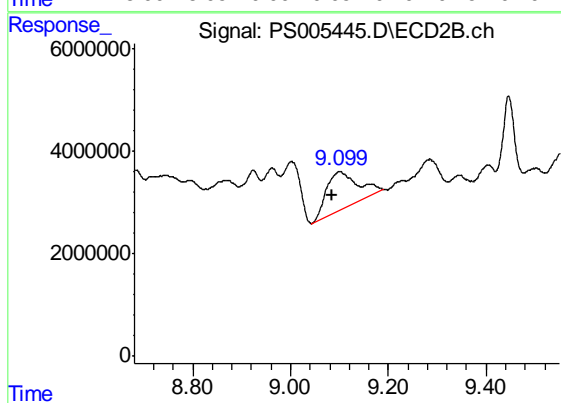
#14 DINOSEB

R.T.: 8.174 min
 Delta R.T.: 0.028 min
 Response: 80059506
 Conc: 19.80 ng/ml



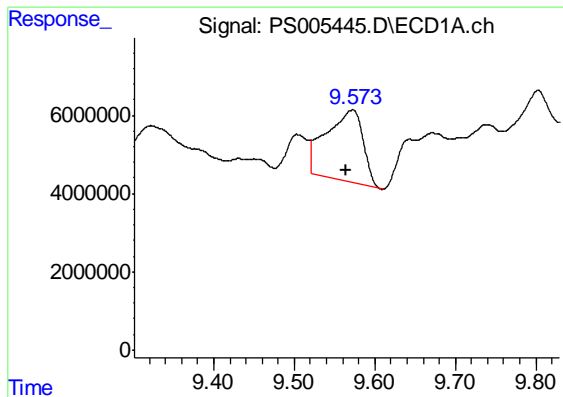
#15 Picloram

R.T.: 9.062 min
 Delta R.T.: -0.055 min
 Response: 19772696
 Conc: 1.72 ng/ml



#15 Picloram

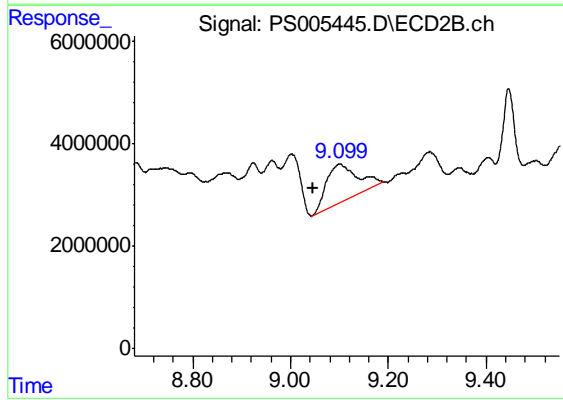
R.T.: 9.101 min
 Delta R.T.: 0.016 min
 Response: 31563012
 Conc: 4.18 ng/ml



#16 DCPA

R.T.: 9.572 min
 Delta R.T.: 0.007 min
 Response: 58121566
 Conc: 5.83 ng/ml

Instrument :
 ECD_S
 ClientSampleId :
 TOP-SOIL-07-01-19



#16 DCPA

R.T.: 9.101 min
 Delta R.T.: 0.055 min
 Response: 31563012
 Conc: 4.64 ng/ml