

Data Path : Z:\pestpcbsrv\HPCHEM1\ECD_S\Data\PS071025\
 Data File : PS031001.D
 Signal(s) : Signal #1: ECD1A.ch Signal #2: ECD2B.ch
 Acq On : 10 Jul 2025 21:49
 Operator : AR\AJ
 Sample : Q2514-10
 Misc :
 ALS Vial : 22 Sample Multiplier: 1

Instrument :
 ECD_S
ClientSampleId :
 TP-90

Manual Integrations
APPROVED
 Reviewed By :Abdul Mirza 07/11/2025
 Supervised By :mohammad ahmed 07/11/2025

Integration File signal 1: autoint1.e
 Integration File signal 2: autoint2.e
 Quant Time: Jul 10 23:03:06 2025
 Quant Method : Z:\pestpcbsrv\HPCHEM1\ECD_S\Method\PS061825.M
 Quant Title : 8080.M
 QLast Update : Thu Jun 19 05:11:26 2025
 Response via : Initial Calibration
 Integrator: ChemStation

Volume Inj. : 1 µl
 Signal #1 Phase : ZB-MR1 Signal #2 Phase: ZB-MR2
 Signal #1 Info : 30M x 0.32mm x0.5 Signal #2 Info : 30M x 0.32mm x 0.25µm

Compound	RT#1	RT#2	Resp#1	Resp#2	ng/ml	ng/ml

System Monitoring Compounds						
4) S 2,4-DCAA	7.331	7.773	150.3E6	71893042	40.899	67.067m#

Target Compounds

(f)=RT Delta > 1/2 Window (#)=Amounts differ by > 25% (m)=manual int.

Data Path : Z:\pestpcbsrv\HPCHEM1\ECD_S\Data\PS071025\
Data File : PS031001.D
Signal(s) : Signal #1: ECD1A.ch Signal #2: ECD2B.ch
Acq On : 10 Jul 2025 21:49
Operator : AR\AJ
Sample : Q2514-10
Misc :
ALS Vial : 22 Sample Multiplier: 1

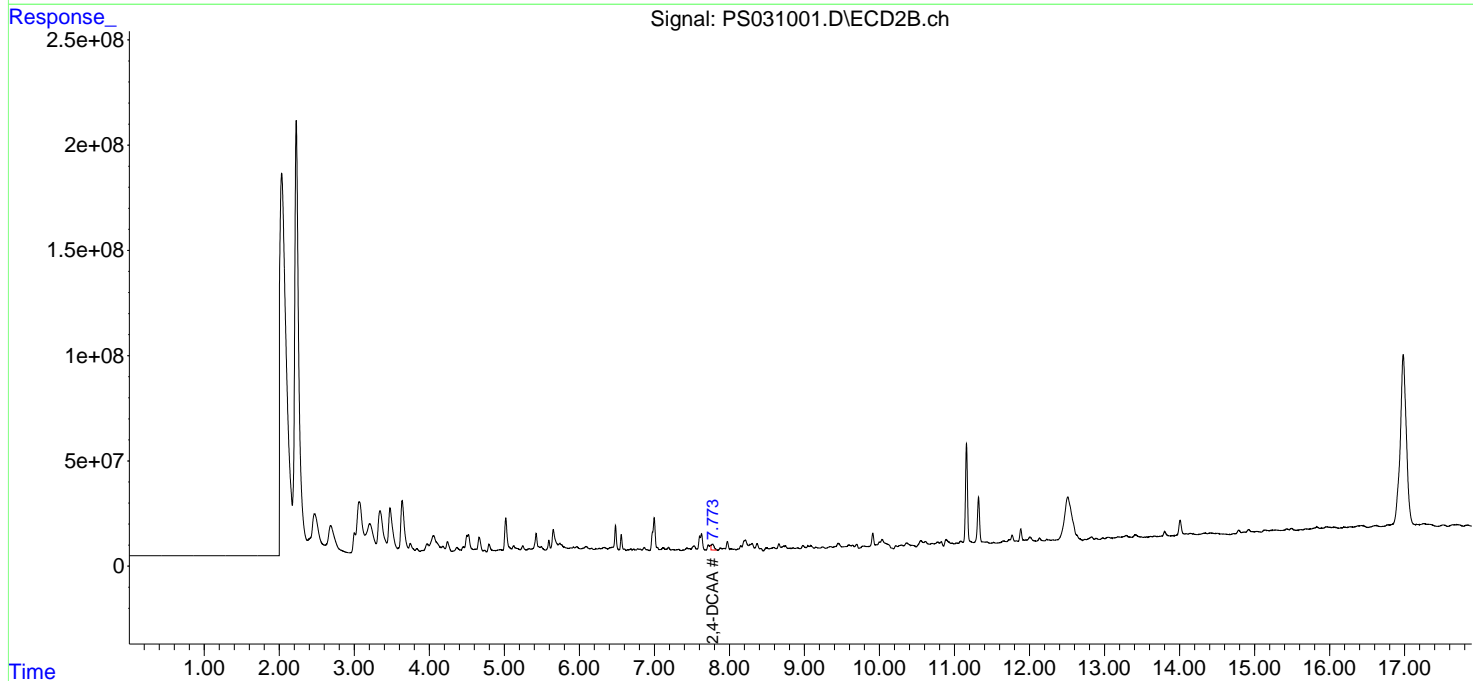
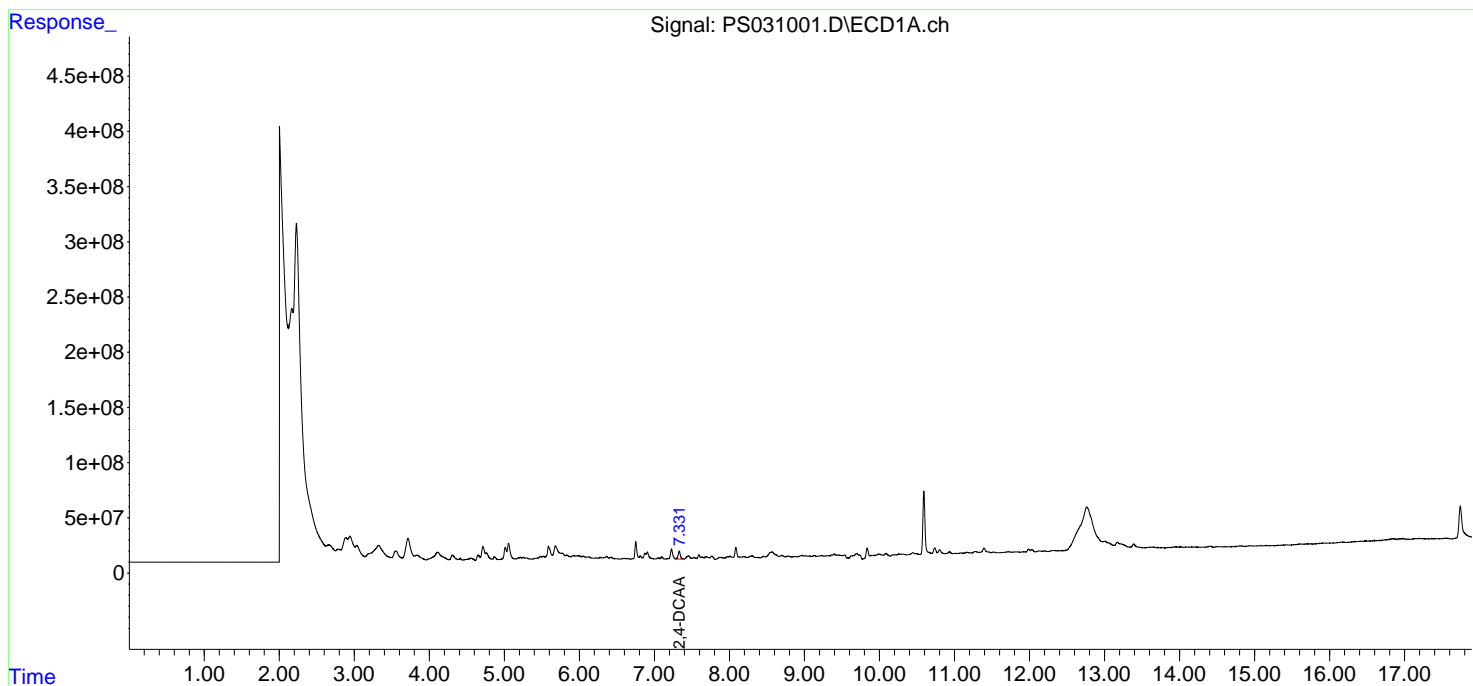
Instrument :
ECD_S
ClientSampleId :
TP-90

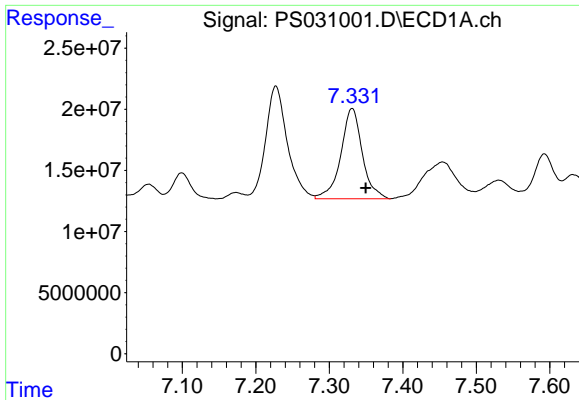
Manual Integrations
APPROVED

Reviewed By :Abdul Mirza 07/11/2025
Supervised By :mohammad ahmed 07/11/2025

Integration File signal 1: autoint1.e
Integration File signal 2: autoint2.e
Quant Time: Jul 10 23:03:06 2025
Quant Method : Z:\pestpcbsrv\HPCHEM1\ECD_S\Method\PS061825.M
Quant Title : 8080.M
QLast Update : Thu Jun 19 05:11:26 2025
Response via : Initial Calibration
Integrator: ChemStation

Volume Inj. : 1 µl
Signal #1 Phase : ZB-MR1 Signal #2 Phase: ZB-MR2
Signal #1 Info : 30M x 0.32mm x0.5 Signal #2 Info : 30M x 0.32mm x 0.25µm





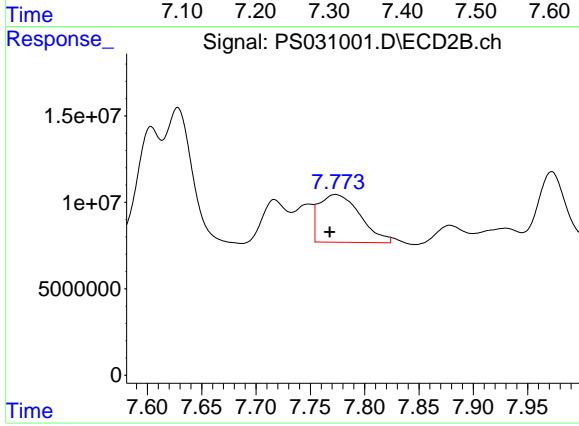
#4 2,4-DCAA

R.T.: 7.331 min
Delta R.T.: -0.018 min
Response: 150278683
Conc: 40.90 ng/ml

Instrument :
ECD_S
ClientSampleId :
TP-90

Manual Integrations
APPROVED

Reviewed By :Abdul Mirza 07/11/2025
Supervised By :mohammad ahmed 07/11/2025



#4 2,4-DCAA

R.T.: 7.773 min
Delta R.T.: 0.005 min
Response: 71893042
Conc: 67.07 ng/ml m