

Data Path : Z:\pestpcbsrv\HPCHEM1\ECD_S\Data\PS071218\
 Data File : PS000982.D
 Signal(s) : Signal #1: ECD1A.ch Signal #2: ECD2B.ch
 Acq On : 12 Jul 2018 13:20
 Operator : UA
 Sample : HSTDCCC750
 Misc :
 ALS Vial : 3 Sample Multiplier: 1

Instrument :
 ECD_S
ClientSampleId :
 HSTDCCC750

Manual Integrations
APPROVED
 Sohil
 7/13/2018 1:02:09 PM

Integration File signal 1: autoint1.e
 Integration File signal 2: autoint2.e
 Quant Time: Jul 12 15:15:09 2018
 Quant Method : Z:\pestpcbsrv\HPCHEM1\ECD_S\Method\PS070818.M
 Quant Title : 8080.M
 QLast Update : Mon Jul 09 02:00:25 2018
 Response via : Initial Calibration
 Integrator: ChemStation

Volume Inj. : 2 µl
 Signal #1 Phase : Rtx-CLPesticides Signal #2 Phase: Rtx-CLPesticides2
 Signal #1 Info : 30M x 0.32mm x0.5 Signal #2 Info : 30M x 0.32mm x 0.25µm

	Compound	RT#1	RT#2	Resp#1	Resp#2	ng/ml	ng/ml

System Monitoring Compounds							
4) S	2,4-DCAA	11.640	11.045	142.6E6	145.7E6	691.208	669.178
Target Compounds							
1) T	Dalapon	3.025	2.424	167.7E6	160.3E6	624.711	595.086
2) T	3,5-DICHL...	10.056	9.189	191.2E6	180.6E6	638.308	614.083
3) T	4-Nitroph...	11.233	10.191	80077095	71022819	583.823	588.595
5) T	DICAMBA	11.957	11.333	529.5E6	501.3E6	672.459	638.706
6) T	MCP P	12.296	11.557	29848223	33280088	54.339	63.646m
7) T	MCPA	12.547	11.935	55681583	47048069	61.012	60.528
8) T	DICHLORPROP	13.149	12.459	132.1E6	125.2E6	655.419	619.797
9) T	2,4-D	13.508	12.931	177.2E6	171.7E6	651.176	620.058
10) T	Pentachlo...	13.897	13.487	2091.8E6	2053.5E6	688.743	654.275
11) T	2,4,5-TP ...	14.766	14.101	825.5E6	805.7E6	675.685	642.057
12) T	2,4,5-T	15.163	14.672	815.7E6	634.6E6	669.852	613.293
13) T	2,4-DB	15.914	15.318	108.9E6	96925707	672.939	632.756
14) T	DINOSEB	17.415	15.750	551.9E6	517.5E6	638.160	617.966
15) T	Picloram	17.173	16.934	1107.6E6	987.8E6	611.604	648.747
16) T	DCPA	17.754	16.990	1000.3E6	1037.0E6	687.081	603.189

(f)=RT Delta > 1/2 Window (#)=Amounts differ by > 25% (m)=manual int.

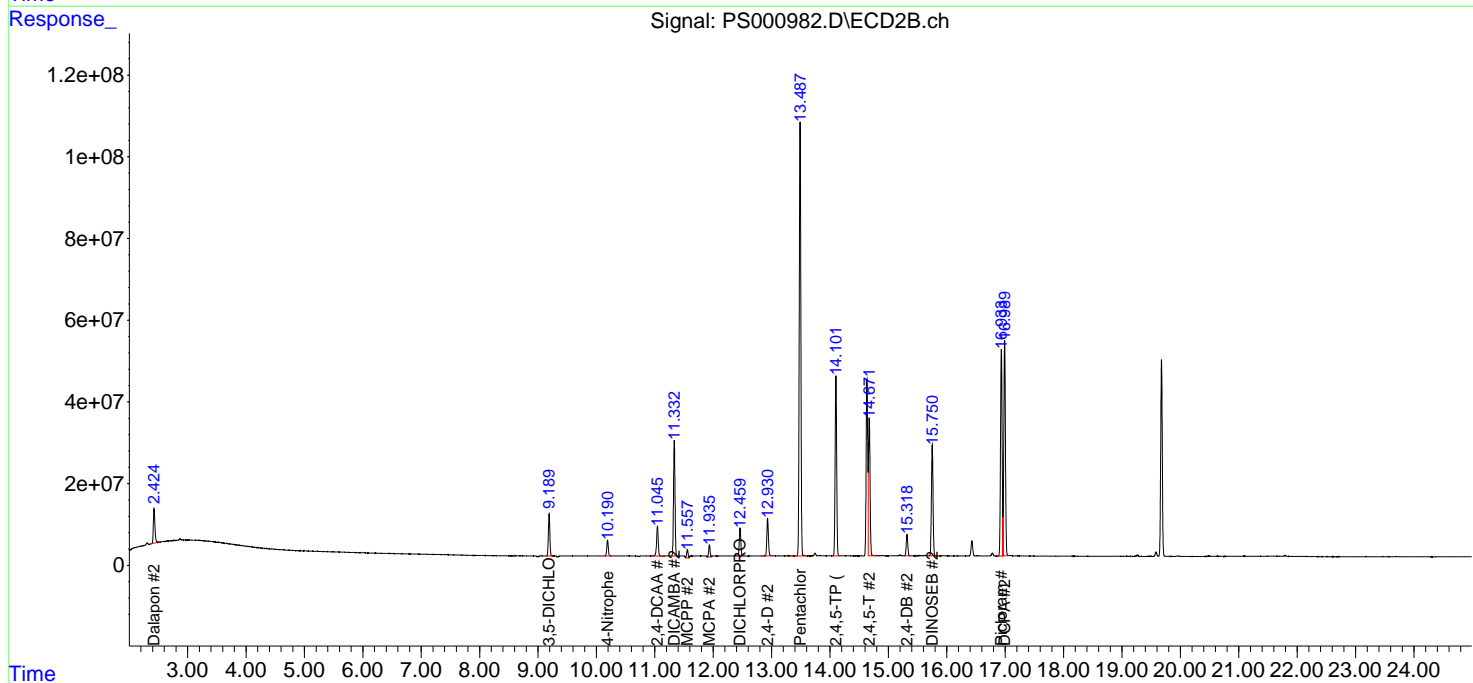
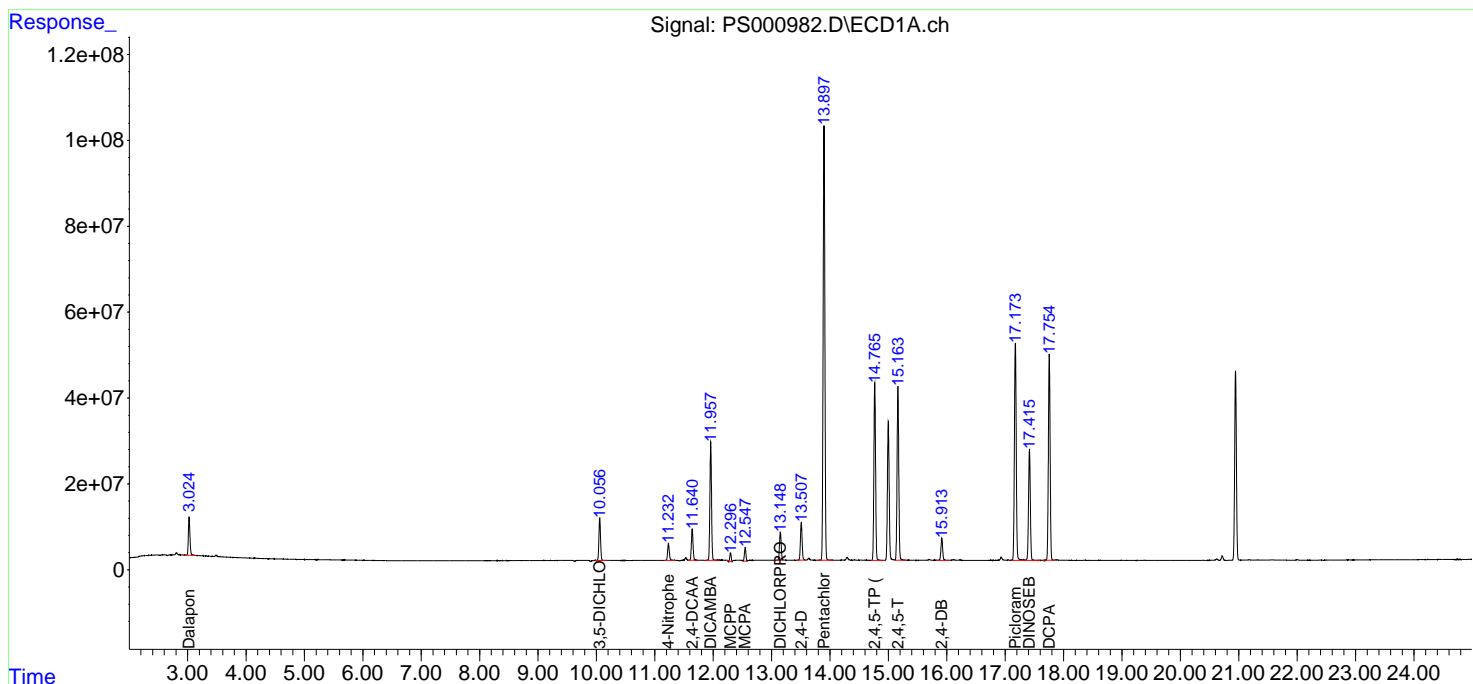
Data Path : Z:\pestpcbsrv\HPCHEM1\ECD_S\Data\PS071218\
 Data File : PS000982.D
 Signal(s) : Signal #1: ECD1A.ch Signal #2: ECD2B.ch
 Acq On : 12 Jul 2018 13:20
 Operator : UA
 Sample : HSTDCCC750
 Misc :
 ALS Vial : 3 Sample Multiplier: 1

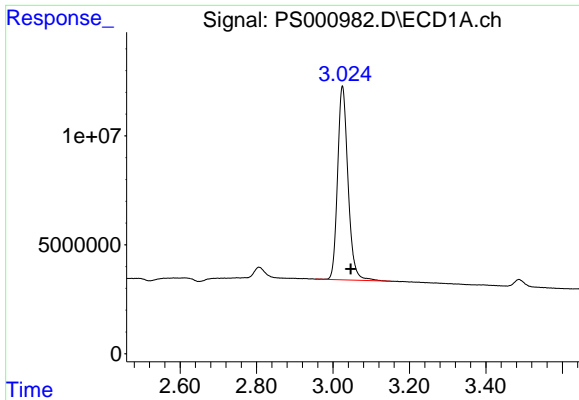
Instrument :
 ECD_S
 Client Sampled :
 HSTDCCC750

Manual Integrations
APPROVED
 Sohil
 7/13/2018 1:02:09 PM

Integration File signal 1: autoint1.e
 Integration File signal 2: autoint2.e
 Quant Time: Jul 12 15:15:09 2018
 Quant Method : Z:\pestpcbsrv\HPCHEM1\ECD_S\Method\PS070818.M
 Quant Title : 8080.M
 QLast Update : Mon Jul 09 02:00:25 2018
 Response via : Initial Calibration
 Integrator: ChemStation

Volume Inj. : 2 µl
 Signal #1 Phase : Rtx-CLPesticides Signal #2 Phase: Rtx-CLPesticides2
 Signal #1 Info : 30M x 0.32mm x0.5 Signal #2 Info : 30M x 0.32mm x 0.25µm





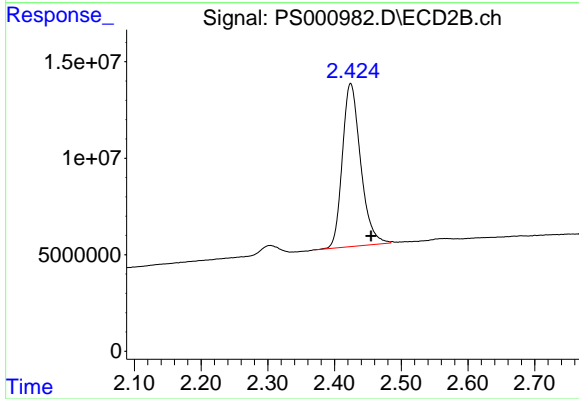
#1 Dalapon

R.T.: 3.025 min
 Delta R.T.: -0.021 min
 Response: 167739896
 Conc: 624.71 ng/ml

Instrument :
 ECD_S
 ClientSampleId :
 HSTDCCC750

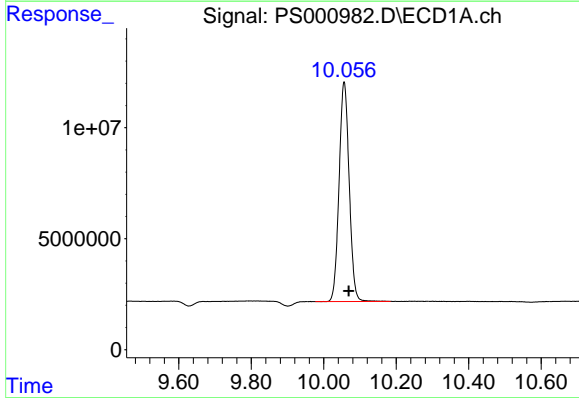
Manual Integrations
 APPROVED

Sohil
 7/13/2018 1:02:09 PM



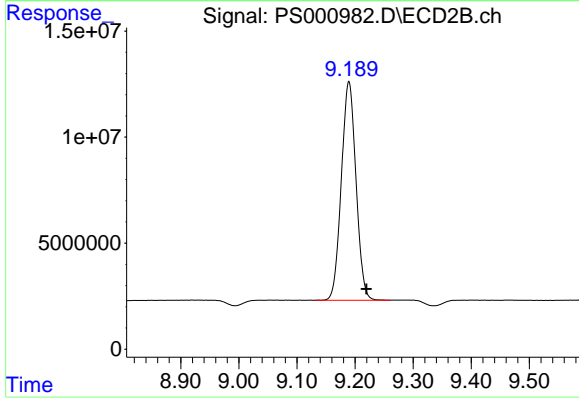
#1 Dalapon

R.T.: 2.424 min
 Delta R.T.: -0.031 min
 Response: 160332361
 Conc: 595.09 ng/ml



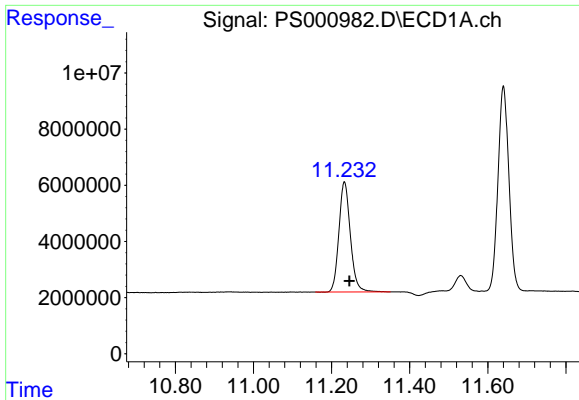
#2 3,5-DICHLOROBENZOIC ACID

R.T.: 10.056 min
 Delta R.T.: -0.013 min
 Response: 191185328
 Conc: 638.31 ng/ml



#2 3,5-DICHLOROBENZOIC ACID

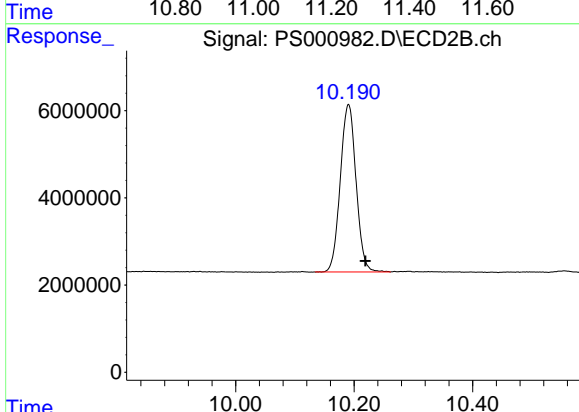
R.T.: 9.189 min
 Delta R.T.: -0.030 min
 Response: 180634730
 Conc: 614.08 ng/ml



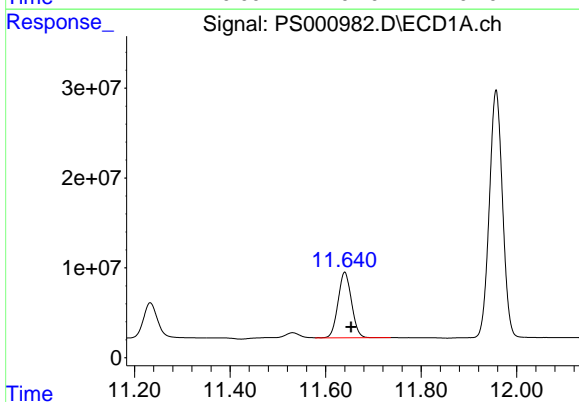
#3 4-Nitrophenol
 R.T.: 11.233 min
 Delta R.T.: -0.013 min
 Response: 80077095
 Conc: 583.82 ng/ml

Instrument :
 ECD_S
 ClientSampleId :
 HSTDCCC750

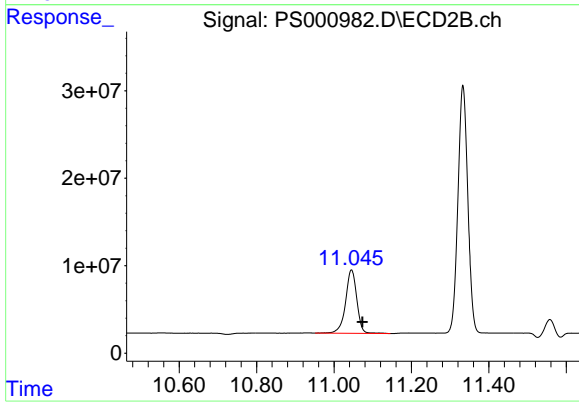
Manual Integrations
 APPROVED
 Sohil
 7/13/2018 1:02:09 PM



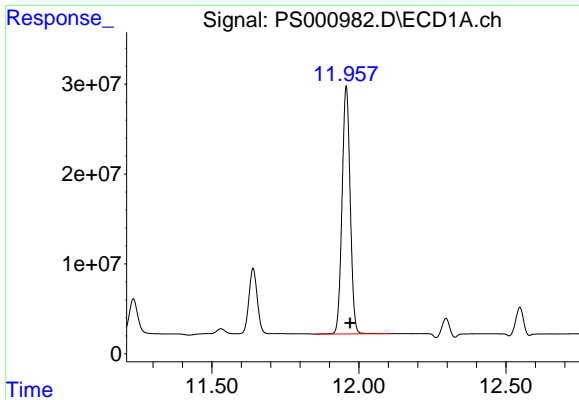
#3 4-Nitrophenol
 R.T.: 10.191 min
 Delta R.T.: -0.028 min
 Response: 71022819
 Conc: 588.59 ng/ml



#4 2,4-DCAA
 R.T.: 11.640 min
 Delta R.T.: -0.013 min
 Response: 142610099
 Conc: 691.21 ng/ml



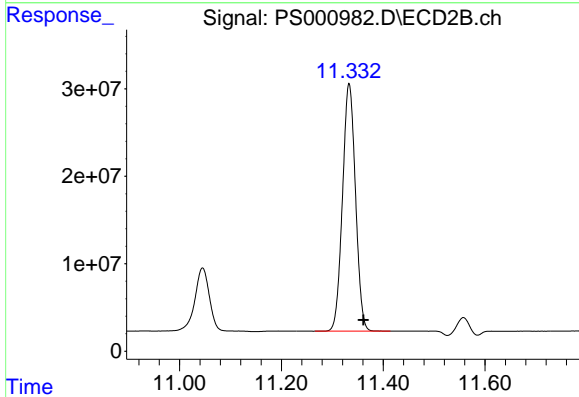
#4 2,4-DCAA
 R.T.: 11.045 min
 Delta R.T.: -0.028 min
 Response: 145744976
 Conc: 669.18 ng/ml



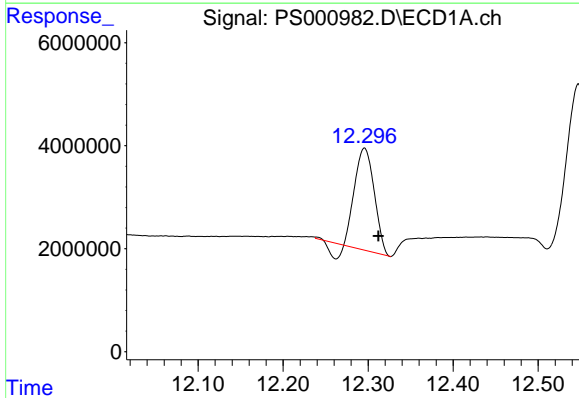
#5 DICAMBA
 R.T.: 11.957 min
 Delta R.T.: -0.013 min
 Response: 529476585
 Conc: 672.46 ng/ml

Instrument :
 ECD_S
ClientSampled :
 HSTDCCC750

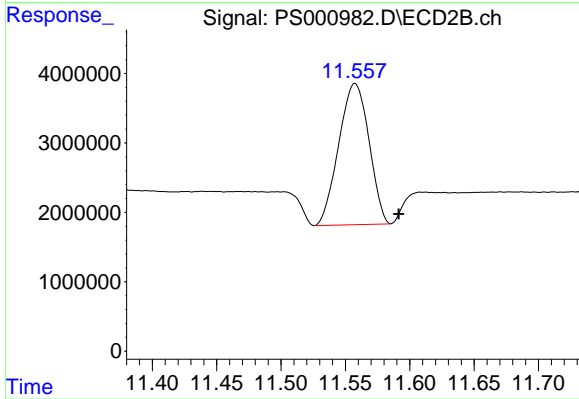
Manual Integrations
APPROVED
 Sohil
 7/13/2018 1:02:09 PM



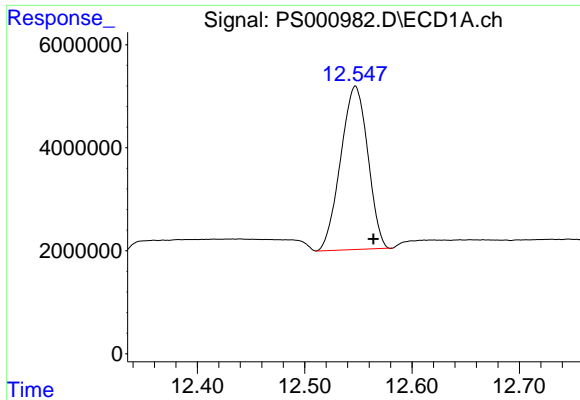
#5 DICAMBA
 R.T.: 11.333 min
 Delta R.T.: -0.028 min
 Response: 501346278
 Conc: 638.71 ng/ml



#6 MCP
 R.T.: 12.296 min
 Delta R.T.: -0.016 min
 Response: 29848223
 Conc: 54.34 ug/ml



#6 MCP
 R.T.: 11.557 min
 Delta R.T.: -0.034 min
 Response: 33280088
 Conc: 63.65 ug/ml m



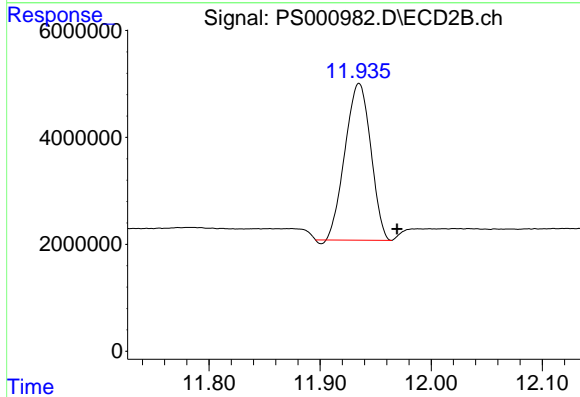
#7 MCPA

R.T.: 12.547 min
 Delta R.T.: -0.017 min
 Response: 55681583
 Conc: 61.01 ug/ml

Instrument :
 ECD_S
 ClientSampled :
 HSTDCCC750

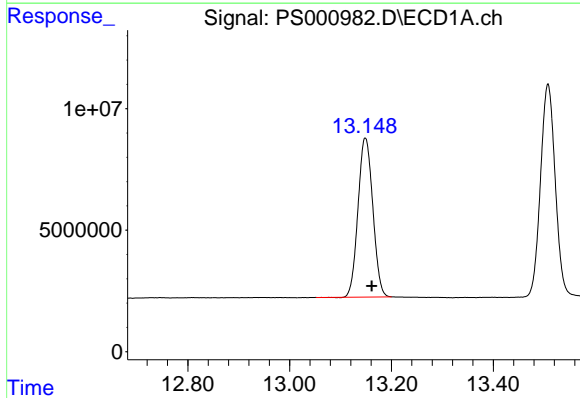
Manual Integrations
 APPROVED

Sohil
 7/13/2018 1:02:09 PM



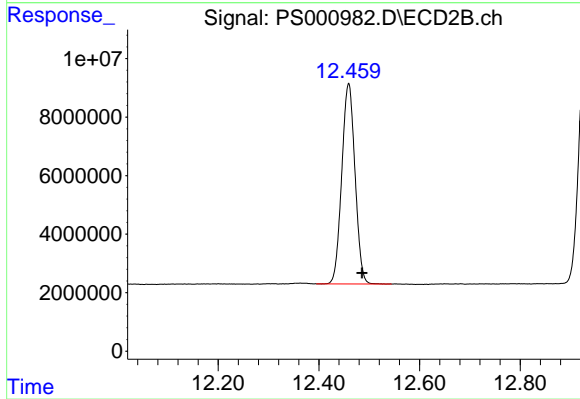
#7 MCPA

R.T.: 11.935 min
 Delta R.T.: -0.034 min
 Response: 47048069
 Conc: 60.53 ug/ml



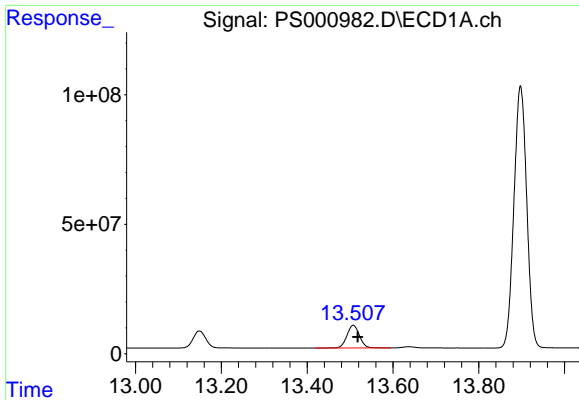
#8 DICHLORPROP

R.T.: 13.149 min
 Delta R.T.: -0.012 min
 Response: 132109807
 Conc: 655.42 ng/ml



#8 DICHLORPROP

R.T.: 12.459 min
 Delta R.T.: -0.027 min
 Response: 125185066
 Conc: 619.80 ng/ml

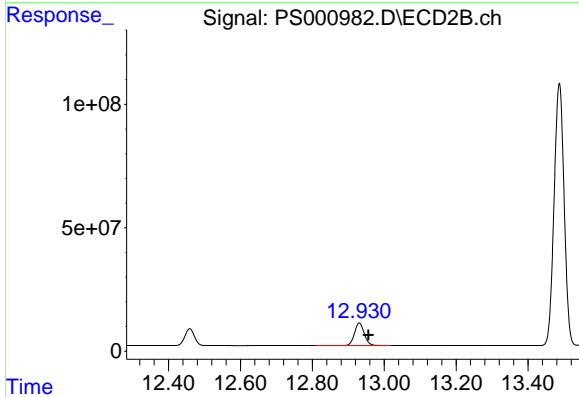


#9 2,4-D

R.T.: 13.508 min
 Delta R.T.: -0.010 min
 Response: 177242631
 Conc: 651.18 ng/ml

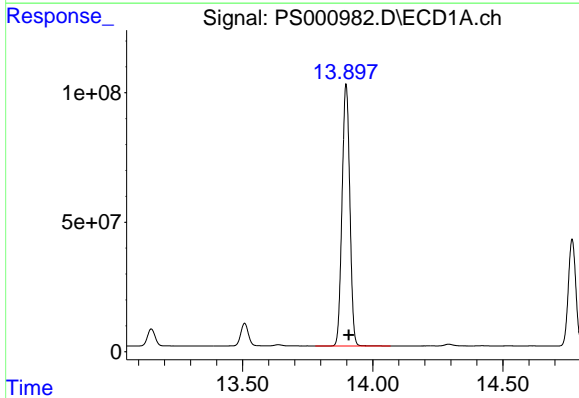
Instrument :
 ECD_S
 ClientSampleId :
 HSTDCCC750

Manual Integrations
 APPROVED
 Sohil
 7/13/2018 1:02:09 PM



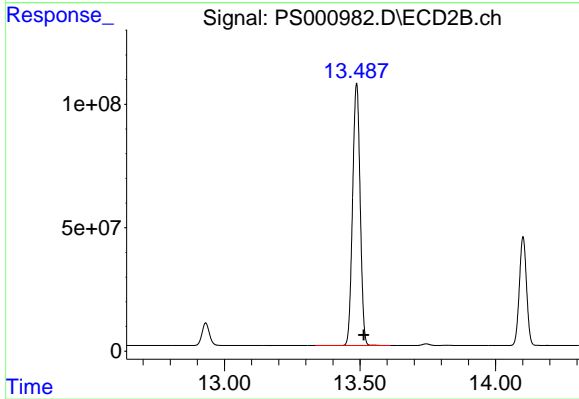
#9 2,4-D

R.T.: 12.931 min
 Delta R.T.: -0.026 min
 Response: 171731133
 Conc: 620.06 ng/ml



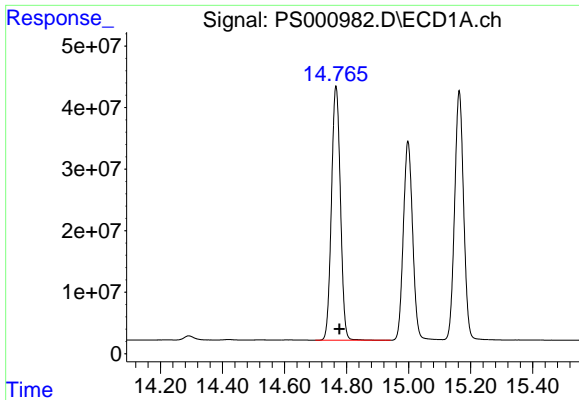
#10 Pentachlorophenol

R.T.: 13.897 min
 Delta R.T.: -0.011 min
 Response: 2091788729
 Conc: 688.74 ng/ml



#10 Pentachlorophenol

R.T.: 13.487 min
 Delta R.T.: -0.026 min
 Response: 2053456438
 Conc: 654.28 ng/ml

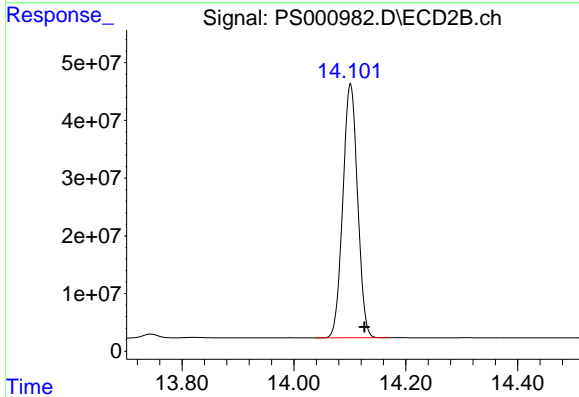


#11 2,4,5-TP (SILVEX)

R.T.: 14.766 min
 Delta R.T.: -0.011 min
 Response: 825501707
 Conc: 675.68 ng/ml

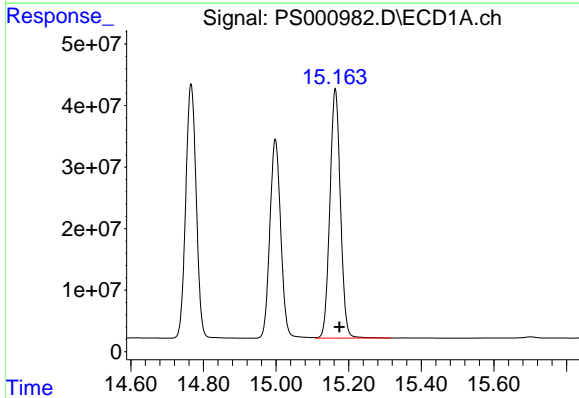
Instrument :
 ECD_S
 ClientSampled :
 HSTDCCC750

Manual Integrations
 APPROVED
 Sohil
 7/13/2018 1:02:09 PM



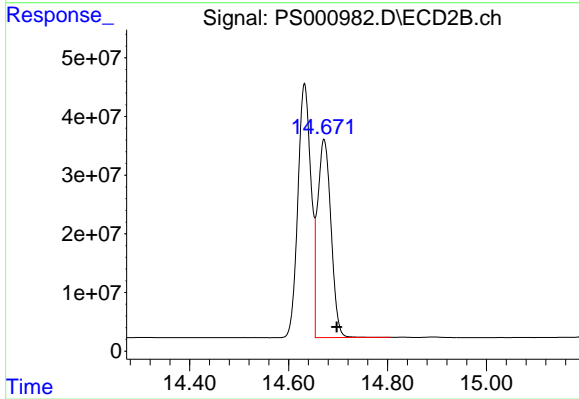
#11 2,4,5-TP (SILVEX)

R.T.: 14.101 min
 Delta R.T.: -0.025 min
 Response: 805734990
 Conc: 642.06 ng/ml



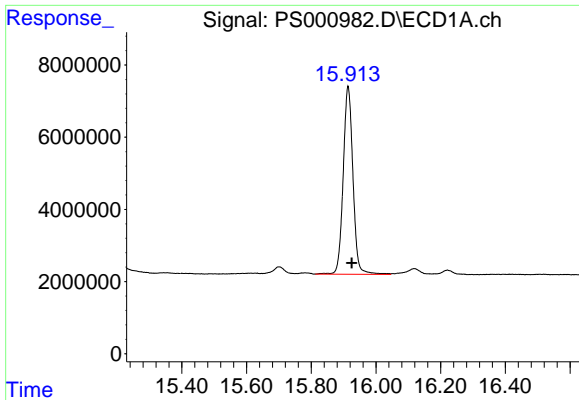
#12 2,4,5-T

R.T.: 15.163 min
 Delta R.T.: -0.011 min
 Response: 815693611
 Conc: 669.85 ng/ml



#12 2,4,5-T

R.T.: 14.672 min
 Delta R.T.: -0.026 min
 Response: 634571517
 Conc: 613.29 ng/ml

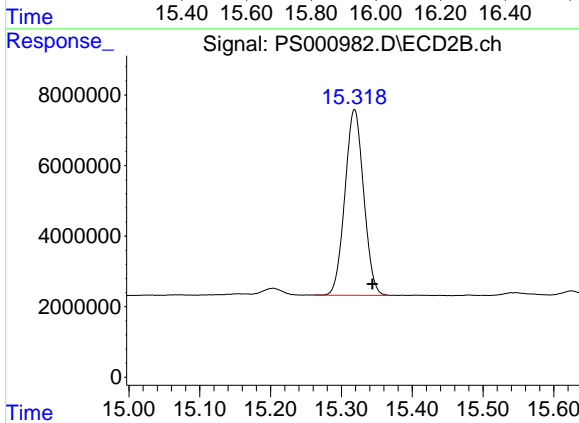


#13 2,4-DB
R.T.: 15.914 min
Delta R.T.: -0.011 min
Response: 108938263
Conc: 672.94 ng/ml

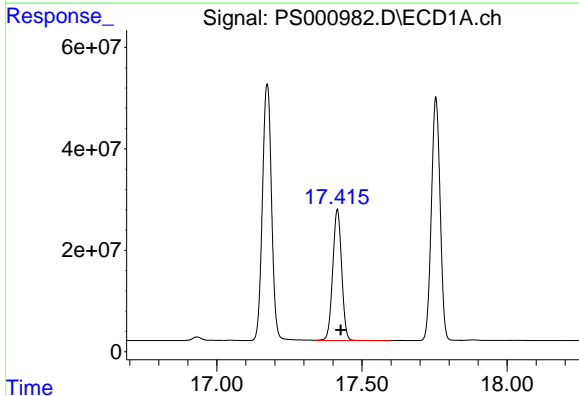
Instrument :
ECD_S
ClientSampleId :
HSTDCCC750

Manual Integrations
APPROVED

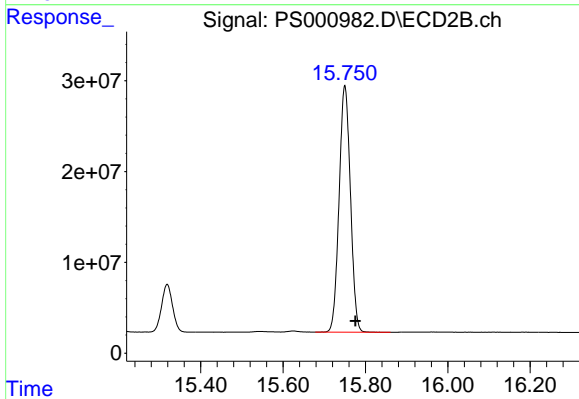
Sohil
7/13/2018 1:02:09 PM



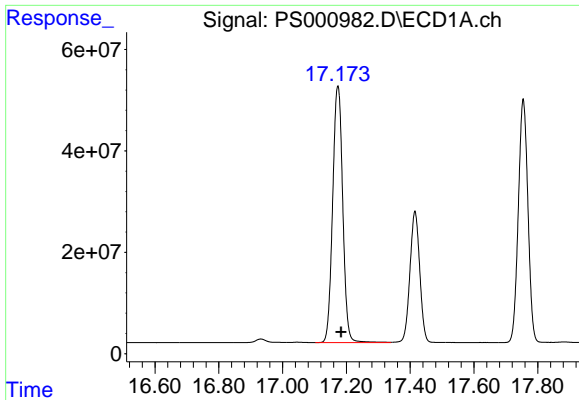
#13 2,4-DB
R.T.: 15.318 min
Delta R.T.: -0.025 min
Response: 96925707
Conc: 632.76 ng/ml



#14 DINOSEB
R.T.: 17.415 min
Delta R.T.: -0.012 min
Response: 551907945
Conc: 638.16 ng/ml



#14 DINOSEB
R.T.: 15.750 min
Delta R.T.: -0.026 min
Response: 517539233
Conc: 617.97 ng/ml



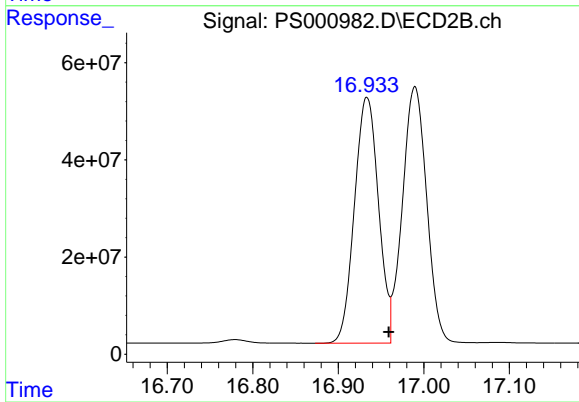
#15 Picloram

R.T.: 17.173 min
Delta R.T.: -0.010 min
Response: 1107645918
Conc: 611.60 ng/ml

Instrument :
ECD_S
ClientSampleId :
HSTDCCC750

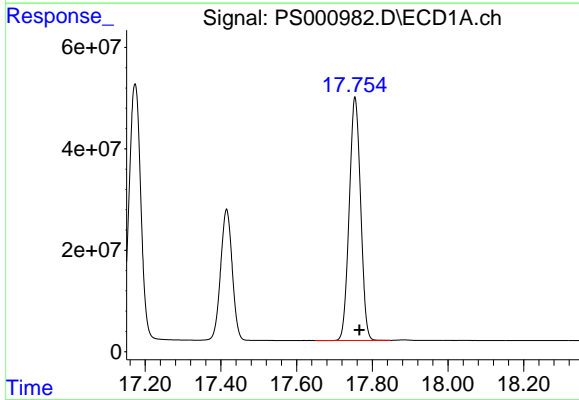
Manual Integrations
APPROVED

Sohil
7/13/2018 1:02:09 PM



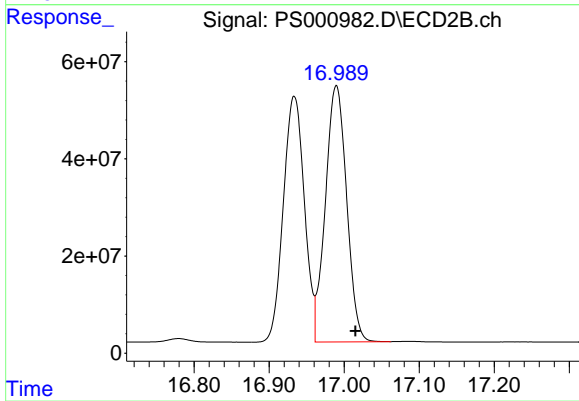
#15 Picloram

R.T.: 16.934 min
Delta R.T.: -0.026 min
Response: 987835450
Conc: 648.75 ng/ml



#16 DCPA

R.T.: 17.754 min
Delta R.T.: -0.012 min
Response: 1000264096
Conc: 687.08 ng/ml



#16 DCPA

R.T.: 16.990 min
Delta R.T.: -0.026 min
Response: 1036971989
Conc: 603.19 ng/ml