

Data Path : Z:\pestpcbsrv\HPCHEM1\ECD_S\Data\PS071318\
 Data File : PS001038.D
 Signal(s) : Signal #1: ECD1A.ch Signal #2: ECD2B.ch
 Acq On : 14 Jul 2018 00:28
 Operator : UA
 Sample : J3762-01
 Misc :
 ALS Vial : 23 Sample Multiplier: 1

Instrument :
 ECD_S
 ClientSampleId :

Integration File signal 1: autoint1.e
 Integration File signal 2: autoint2.e
 Quant Time: Jul 14 03:34:31 2018
 Quant Method : Z:\pestpcbsrv\HPCHEM1\ECD_S\Method\PS070818.M
 Quant Title : 8080.M
 QLast Update : Mon Jul 09 02:00:25 2018
 Response via : Initial Calibration
 Integrator: ChemStation

Volume Inj. : 2 µl
 Signal #1 Phase : Rtx-CLPesticides Signal #2 Phase: Rtx-CLPesticides2
 Signal #1 Info : 30M x 0.32mm x0.5 Signal #2 Info : 30M x 0.32mm x 0.25µm

	Compound	RT#1	RT#2	Resp#1	Resp#2	ng/ml	ng/ml

System Monitoring Compounds							
4) S	2,4-DCAA	11.644	11.059	91832415	80454599	445.097	369.402
Target Compounds							
1) T	Dalapon	3.032	2.442	39090463	35570792	145.584	132.024
2) T	3,5-DICHL...	10.060	9.206	50505226	48209355	168.621	163.892
3) T	4-Nitroph...	11.237	10.206	18741438	25860163	136.639	214.314 #
5) T	DICAMBA	11.960	11.347	128.5E6	135.4E6	163.238	172.520
6) T	MCP P	12.297	11.567	6562885	5594033	11.948	10.698
7) T	MCPA	12.546	11.943	10508415	7074863	11.514	9.102
8) T	DICHLORPROP	13.152	12.471	36512429	38120214	181.144	188.735
9) T	2,4-D	13.510	12.943	46281346	47051105	170.034	169.884
10) T	Pentachlo...	13.900	13.499	511.8E6	497.7E6	168.532	158.581
11) T	2,4,5-TP ...	14.769	14.112	198.3E6	198.8E6	162.338	158.408
12) T	2,4,5-T	15.166	14.682	210.3E6	157.1E6	172.723	151.846
13) T	2,4-DB	15.917	15.329	41440802	24731397	255.990	161.453 #
14) T	DINOSEB	17.418	15.760	127.3E6	126.3E6	147.248	150.782
15) T	Picloram	17.176	16.944	232.6E6	177.5E6	128.442	116.574
16) T	DCPA	17.759	17.000	154.6E6	214.3E6	106.180	124.671

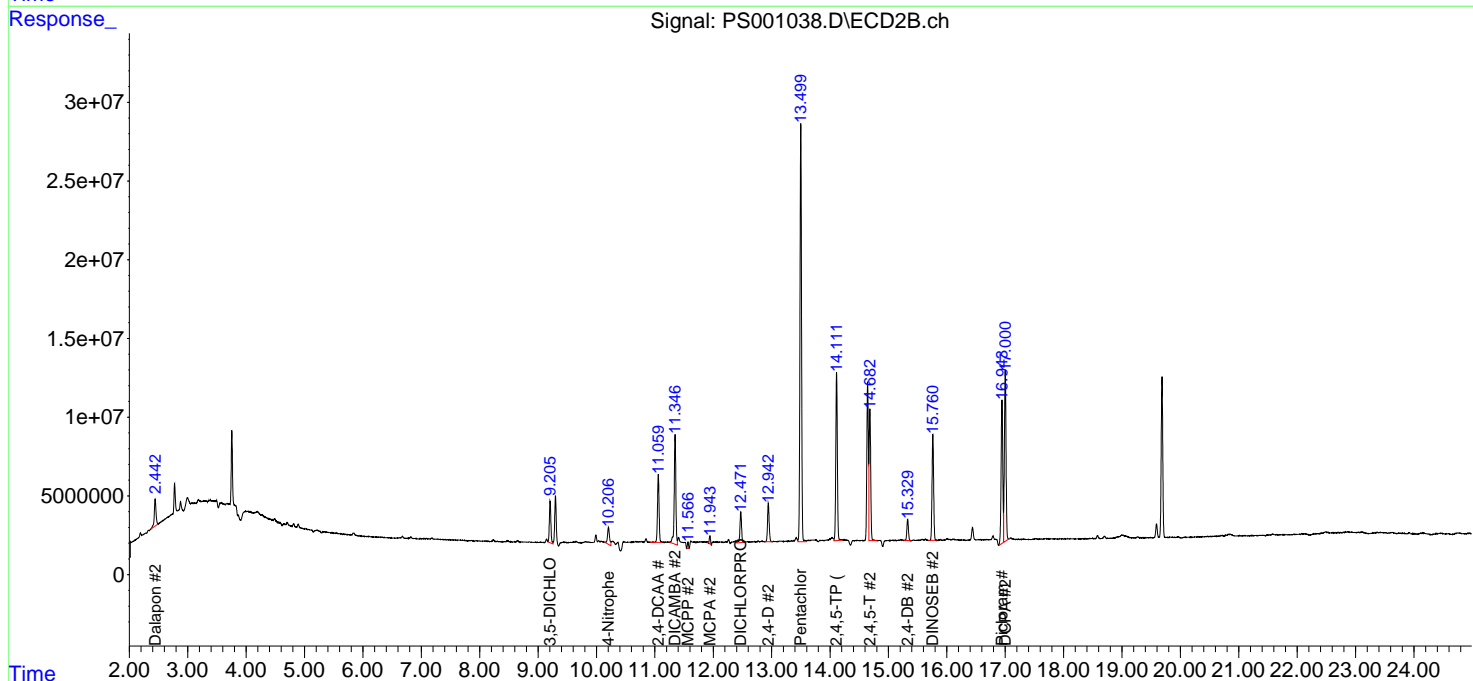
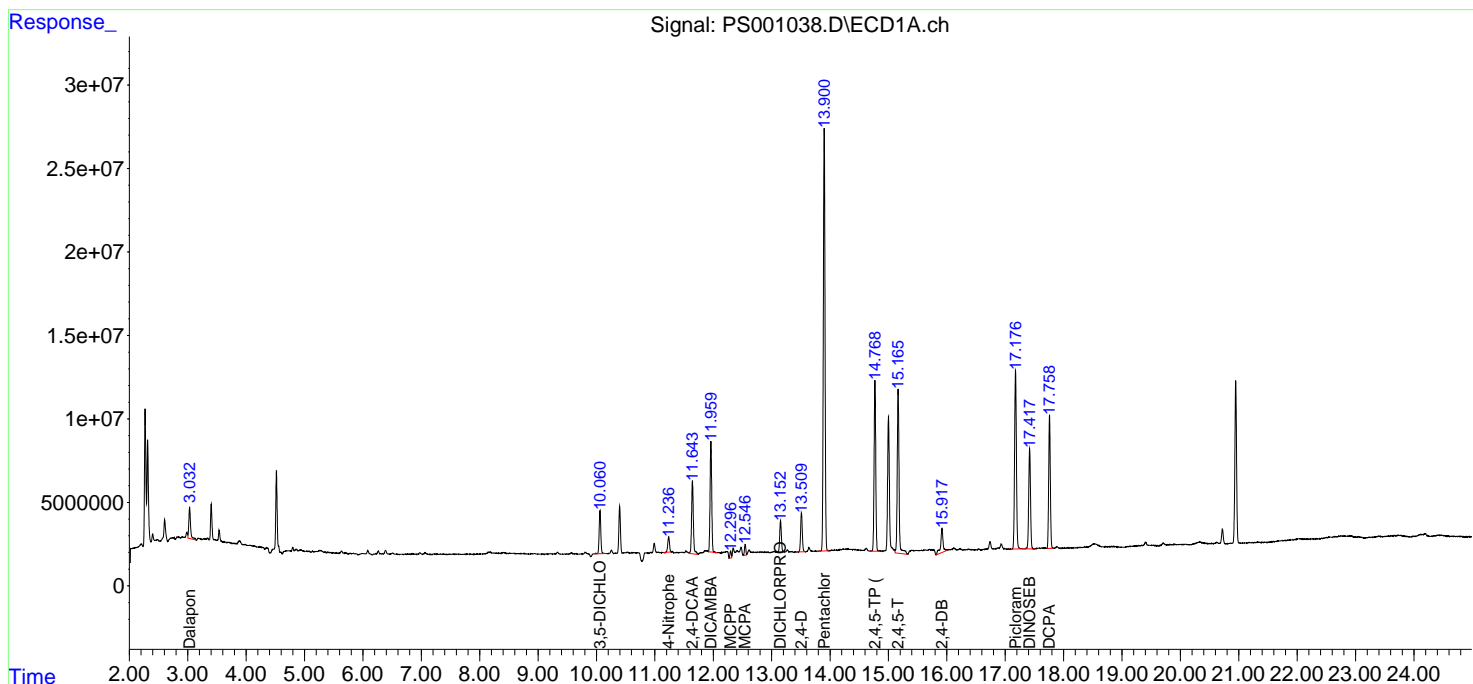
(f)=RT Delta > 1/2 Window (#)=Amounts differ by > 25% (m)=manual int.

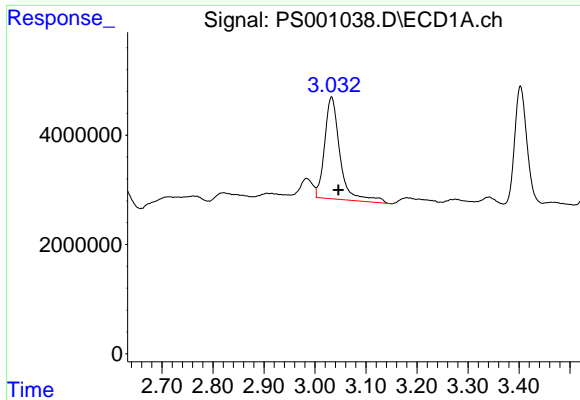
Data Path : Z:\pestpcbsrv\HPCHEM1\ECD_S\Data\PS071318\
 Data File : PS001038.D
 Signal(s) : Signal #1: ECD1A.ch Signal #2: ECD2B.ch
 Acq On : 14 Jul 2018 00:28
 Operator : UA
 Sample : J3762-01
 Misc :
 ALS Vial : 23 Sample Multiplier: 1

Instrument :
 ECD_S
 ClientSampled :

Integration File signal 1: autoint1.e
 Integration File signal 2: autoint2.e
 Quant Time: Jul 14 03:34:31 2018
 Quant Method : Z:\pestpcbsrv\HPCHEM1\ECD_S\Method\PS070818.M
 Quant Title : 8080.M
 QLast Update : Mon Jul 09 02:00:25 2018
 Response via : Initial Calibration
 Integrator: ChemStation

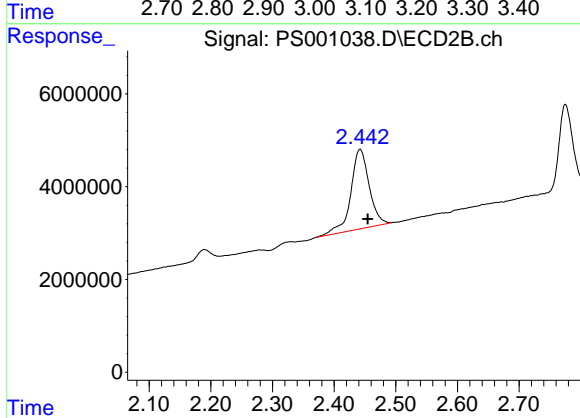
Volume Inj. : 2 µl
 Signal #1 Phase : Rtx-CLPesticides Signal #2 Phase: Rtx-CLPesticides2
 Signal #1 Info : 30M x 0.32mm x0.5 Signal #2 Info : 30M x 0.32mm x 0.25µm



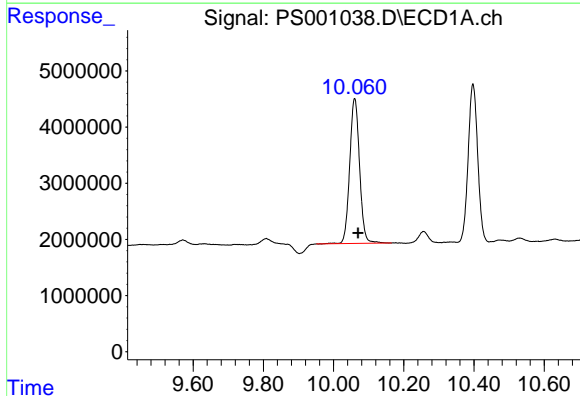


#1 Dalapon
 R.T.: 3.032 min
 Delta R.T.: -0.014 min
 Response: 39090463
 Conc: 145.58 ng/ml

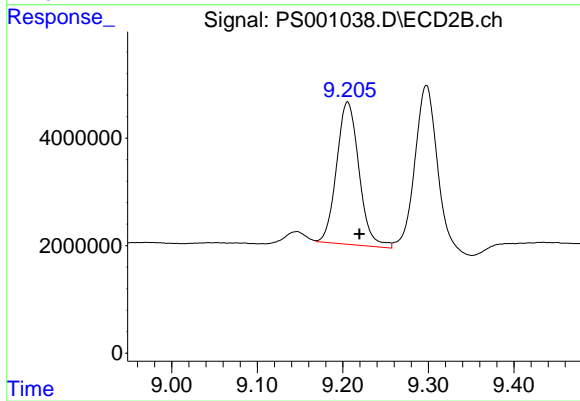
Instrument :
 ECD_S
 ClientSampleId :



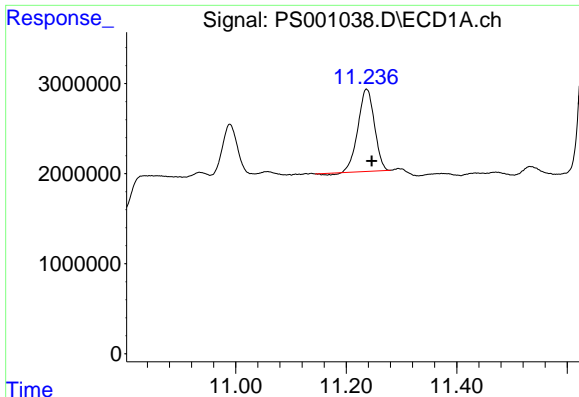
#1 Dalapon
 R.T.: 2.442 min
 Delta R.T.: -0.012 min
 Response: 35570792
 Conc: 132.02 ng/ml



#2 3,5-DICHLOROBENZOIC ACID
 R.T.: 10.060 min
 Delta R.T.: -0.010 min
 Response: 50505226
 Conc: 168.62 ng/ml



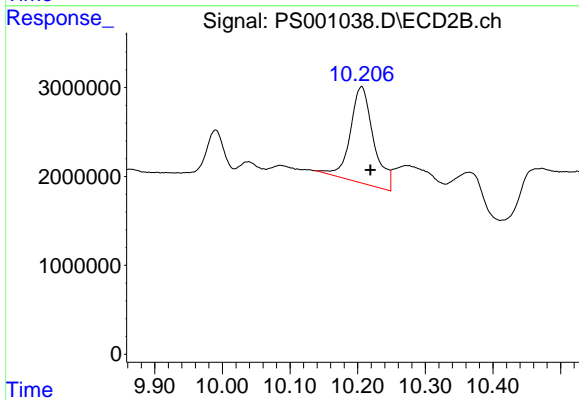
#2 3,5-DICHLOROBENZOIC ACID
 R.T.: 9.206 min
 Delta R.T.: -0.014 min
 Response: 48209355
 Conc: 163.89 ng/ml



#3 4-Nitrophenol

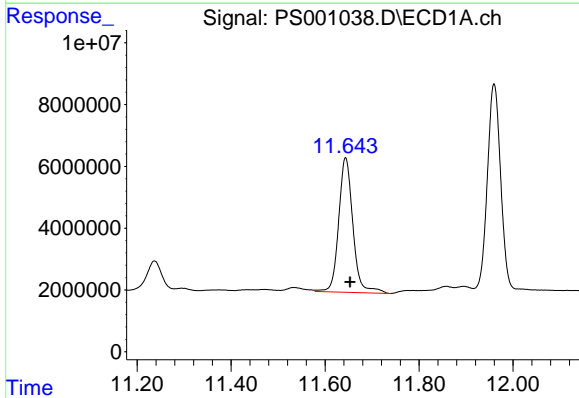
R.T.: 11.237 min
Delta R.T.: -0.009 min
Response: 18741438
Conc: 136.64 ng/ml

Instrument :
ECD_S
ClientSampleId :



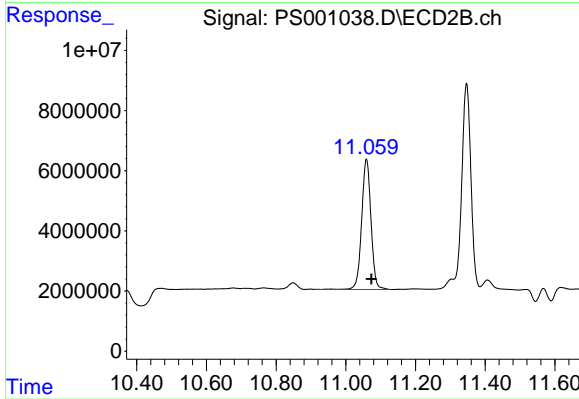
#3 4-Nitrophenol

R.T.: 10.206 min
Delta R.T.: -0.013 min
Response: 25860163
Conc: 214.31 ng/ml



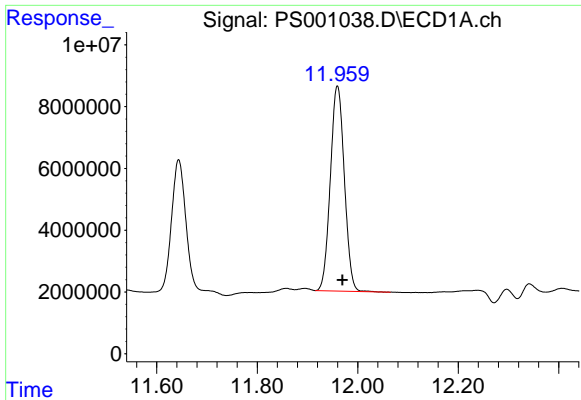
#4 2,4-DCAA

R.T.: 11.644 min
Delta R.T.: -0.010 min
Response: 91832415
Conc: 445.10 ng/ml



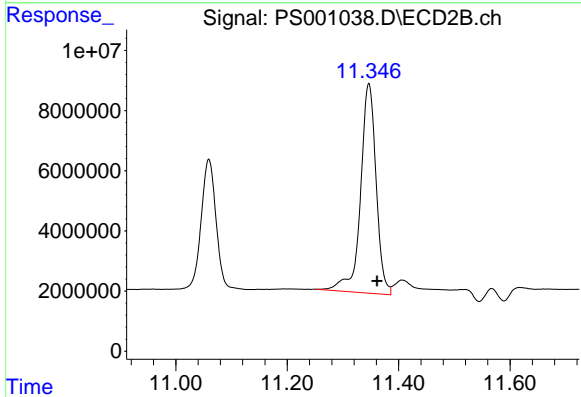
#4 2,4-DCAA

R.T.: 11.059 min
Delta R.T.: -0.014 min
Response: 80454599
Conc: 369.40 ng/ml

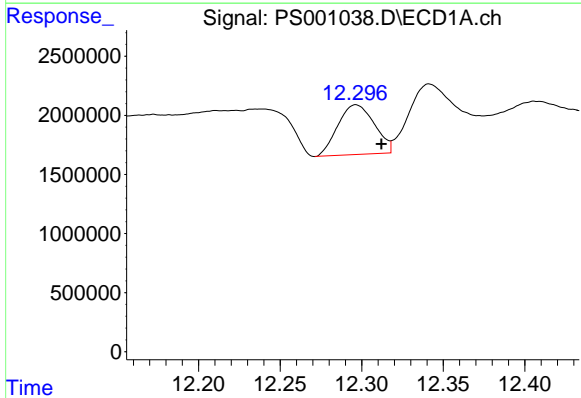


#5 DICAMBA
 R.T.: 11.960 min
 Delta R.T.: -0.010 min
 Response: 128528907
 Conc: 163.24 ng/ml

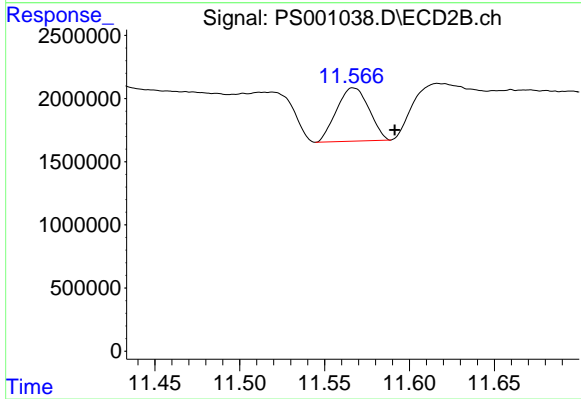
Instrument :
 ECD_S
 ClientSampled :



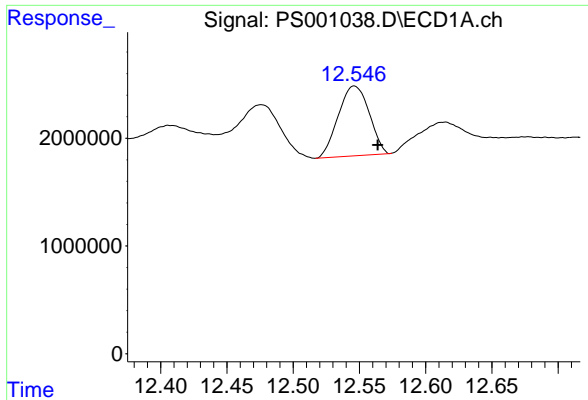
#5 DICAMBA
 R.T.: 11.347 min
 Delta R.T.: -0.015 min
 Response: 135417612
 Conc: 172.52 ng/ml



#6 MCPP
 R.T.: 12.297 min
 Delta R.T.: -0.016 min
 Response: 6562885
 Conc: 11.95 ug/ml

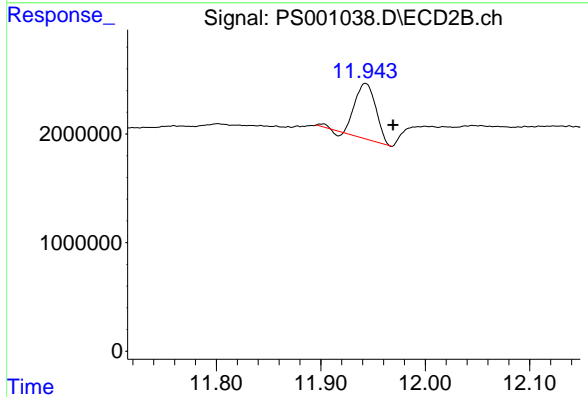


#6 MCPP
 R.T.: 11.567 min
 Delta R.T.: -0.024 min
 Response: 5594033
 Conc: 10.70 ug/ml

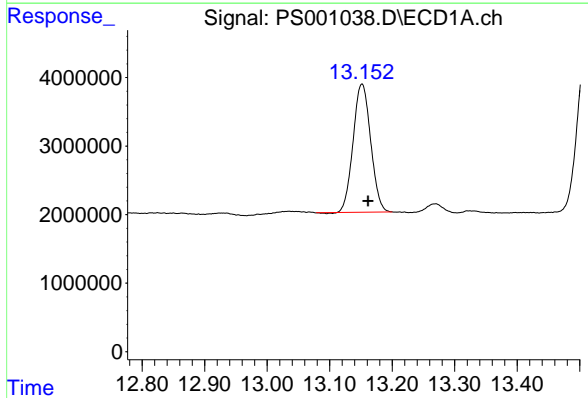


#7 MCPA
 R.T.: 12.546 min
 Delta R.T.: -0.018 min
 Response: 10508415
 Conc: 11.51 ug/ml

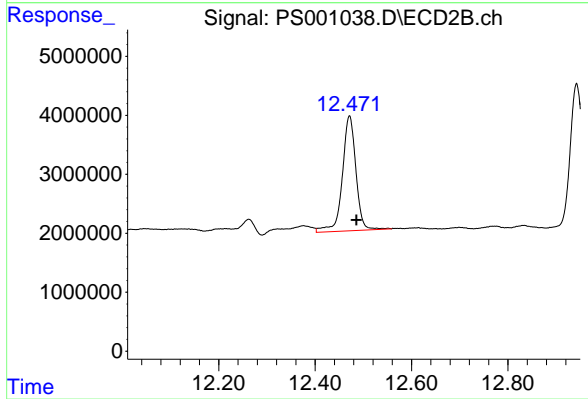
Instrument :
 ECD_S
 ClientSampleId :



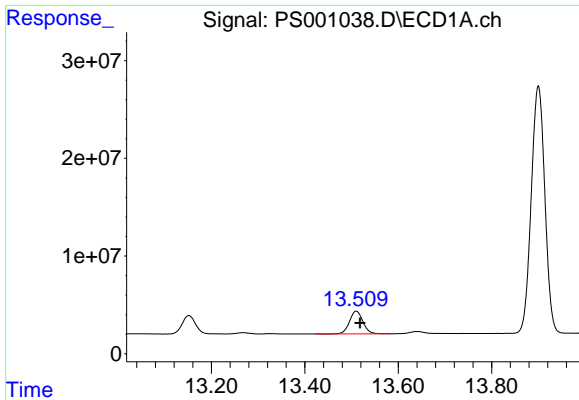
#7 MCPA
 R.T.: 11.943 min
 Delta R.T.: -0.026 min
 Response: 7074863
 Conc: 9.10 ug/ml



#8 DICHLORPROP
 R.T.: 13.152 min
 Delta R.T.: -0.010 min
 Response: 36512429
 Conc: 181.14 ng/ml



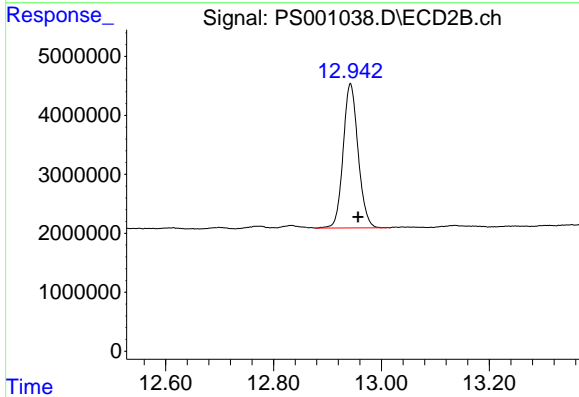
#8 DICHLORPROP
 R.T.: 12.471 min
 Delta R.T.: -0.014 min
 Response: 38120214
 Conc: 188.73 ng/ml



#9 2,4-D

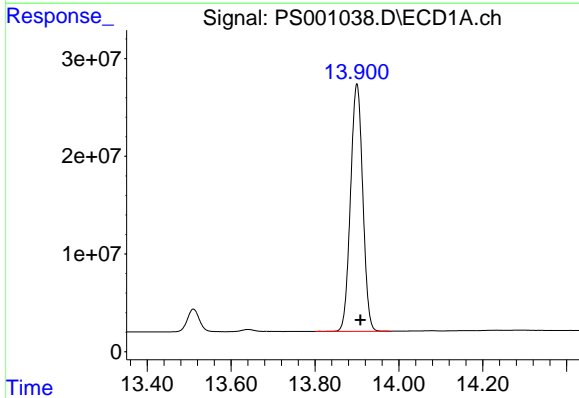
R.T.: 13.510 min
 Delta R.T.: -0.008 min
 Response: 46281346
 Conc: 170.03 ng/ml

Instrument :
 ECD_S
 ClientSampleId :



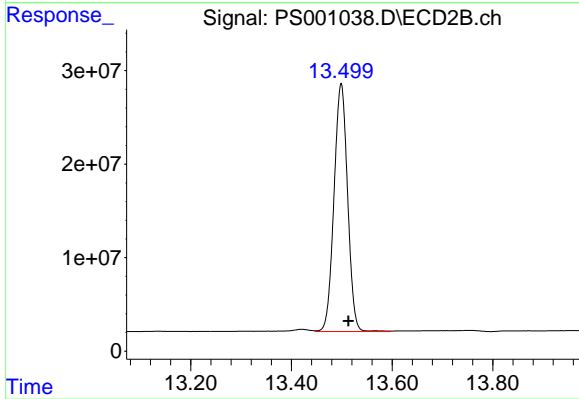
#9 2,4-D

R.T.: 12.943 min
 Delta R.T.: -0.014 min
 Response: 47051105
 Conc: 169.88 ng/ml



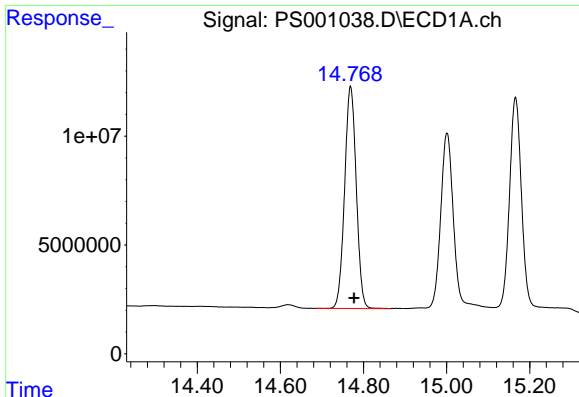
#10 Pentachlorophenol

R.T.: 13.900 min
 Delta R.T.: -0.008 min
 Response: 511849570
 Conc: 168.53 ng/ml



#10 Pentachlorophenol

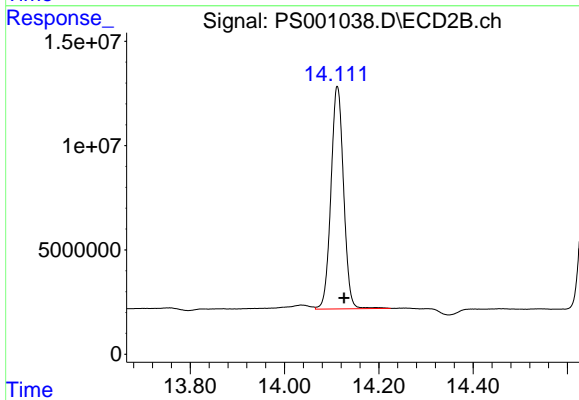
R.T.: 13.499 min
 Delta R.T.: -0.014 min
 Response: 497709383
 Conc: 158.58 ng/ml



#11 2,4,5-TP (SILVEX)

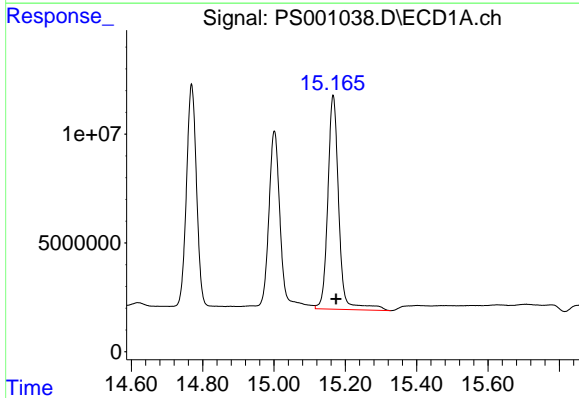
R.T.: 14.769 min
 Delta R.T.: -0.008 min
 Response: 198332529
 Conc: 162.34 ng/ml

Instrument :
 ECD_S
 ClientSampleId :



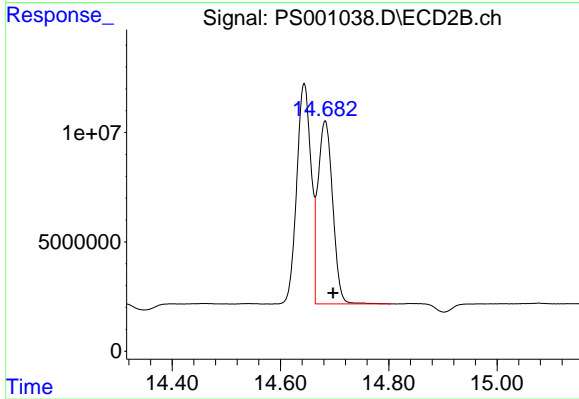
#11 2,4,5-TP (SILVEX)

R.T.: 14.112 min
 Delta R.T.: -0.014 min
 Response: 198790121
 Conc: 158.41 ng/ml



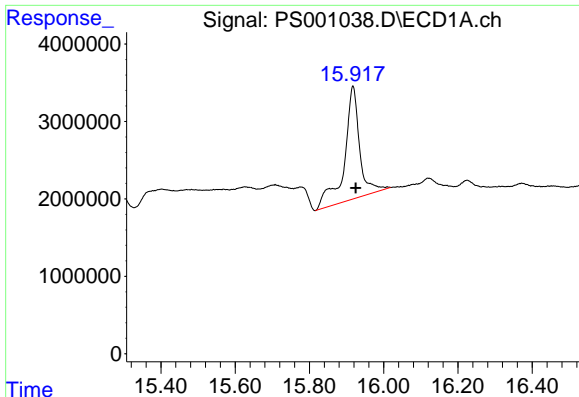
#12 2,4,5-T

R.T.: 15.166 min
 Delta R.T.: -0.008 min
 Response: 210328757
 Conc: 172.72 ng/ml



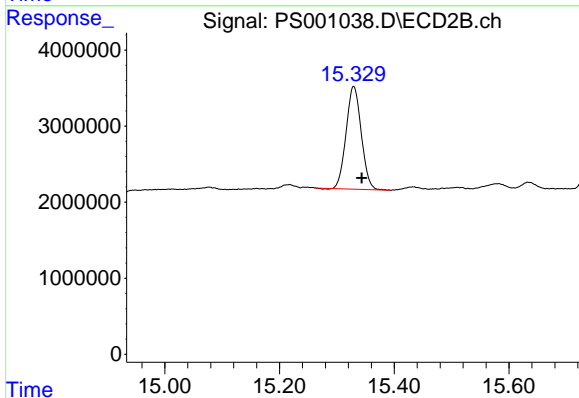
#12 2,4,5-T

R.T.: 14.682 min
 Delta R.T.: -0.015 min
 Response: 157114078
 Conc: 151.85 ng/ml

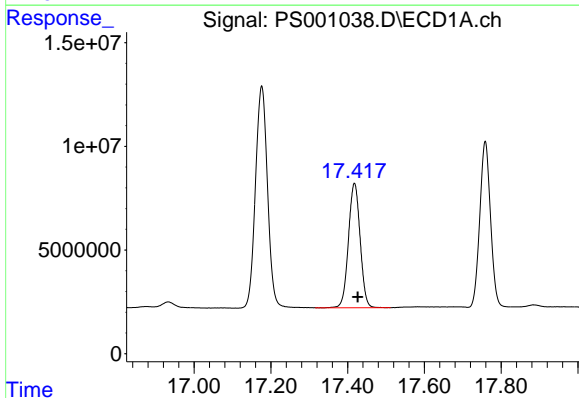


#13 2,4-DB
 R.T.: 15.917 min
 Delta R.T.: -0.007 min
 Response: 41440802
 Conc: 255.99 ng/ml

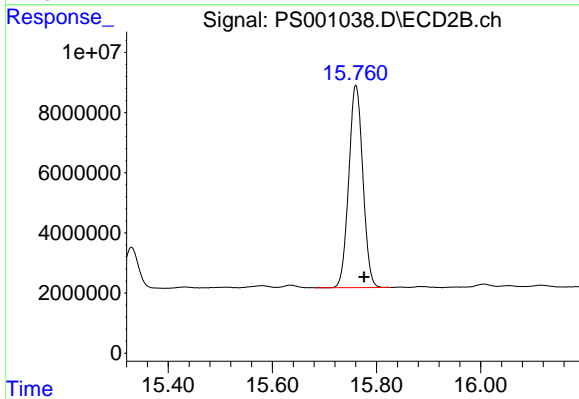
Instrument :
 ECD_S
 ClientSampleId :



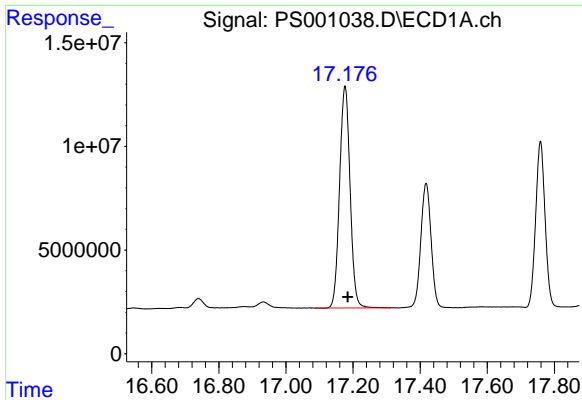
#13 2,4-DB
 R.T.: 15.329 min
 Delta R.T.: -0.014 min
 Response: 24731397
 Conc: 161.45 ng/ml



#14 DINOSEB
 R.T.: 17.418 min
 Delta R.T.: -0.009 min
 Response: 127346309
 Conc: 147.25 ng/ml

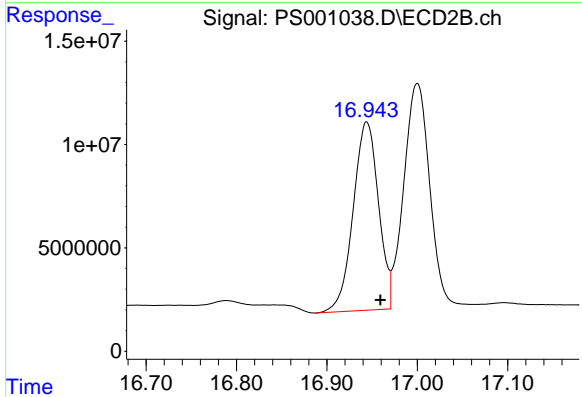


#14 DINOSEB
 R.T.: 15.760 min
 Delta R.T.: -0.016 min
 Response: 126278545
 Conc: 150.78 ng/ml

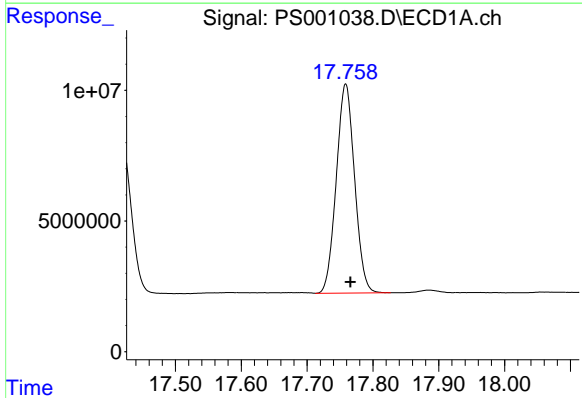


#15 Picloram
 R.T.: 17.176 min
 Delta R.T.: -0.008 min
 Response: 232614875
 Conc: 128.44 ng/ml

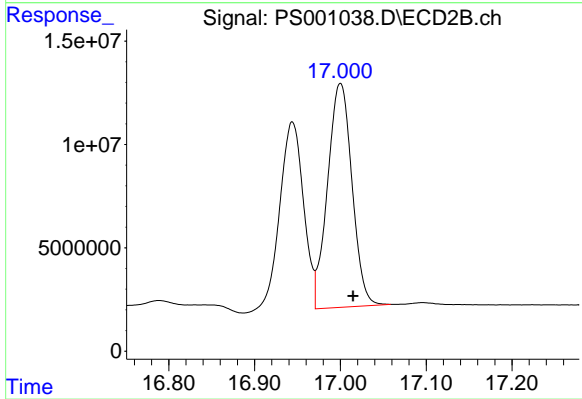
Instrument :
 ECD_S
 ClientSampleId :



#15 Picloram
 R.T.: 16.944 min
 Delta R.T.: -0.015 min
 Response: 177505659
 Conc: 116.57 ng/ml



#16 DCPA
 R.T.: 17.759 min
 Delta R.T.: -0.007 min
 Response: 154579139
 Conc: 106.18 ng/ml



#16 DCPA
 R.T.: 17.000 min
 Delta R.T.: -0.015 min
 Response: 214327582
 Conc: 124.67 ng/ml