

Data Path : Z:\pestpcbsrv\HPCHEM1\ECD_S\Data\PS071323\
 Data File : PS023716.D
 Signal(s) : Signal #1: ECD1A.ch Signal #2: ECD2B.ch
 Acq On : 13 Jul 2023 19:38
 Operator : AR\AJ
 Sample : PB154162BS
 Misc :
 ALS Vial : 8 Sample Multiplier: 1

Instrument :
 ECD_S
 ClientSampleId :

Integration File signal 1: autoint1.e
 Integration File signal 2: autoint2.e
 Quant Time: Jul 13 23:12:21 2023
 Quant Method : Z:\pestpcbsrv\HPCHEM1\ECD_S\Method\PS070723.M
 Quant Title : 8080.M
 QLast Update : Fri Jul 07 18:46:40 2023
 Response via : Initial Calibration
 Integrator: ChemStation

Volume Inj. : 2 µl
 Signal #1 Phase : Rtx-CLPesticides Signal #2 Phase: Rtx-CLPesticides2
 Signal #1 Info : 30M x 0.32mm x0.5 Signal #2 Info : 30M x 0.32mm x 0.25µm

	Compound	RT#1	RT#2	Resp#1	Resp#2	ng/ml	ng/ml

System Monitoring Compounds							
4) S	2,4-DCAA	6.374	6.810	653.2E6	209.7E6	517.190	499.949
Target Compounds							
1) T	Dalapon	2.476	2.551	667.4E6	323.1E6	474.608	461.604
2) T	3,5-DICHL...	5.745	5.987	944.1E6	303.5E6	487.254	468.629
3) T	4-Nitroph...	6.211	6.420	443.2E6	138.7E6	495.268	481.013
5) T	DICAMBA	6.517	6.974	2696.0E6	854.0E6	483.315	471.428
8) T	DICHLORPROP	7.108	7.592	709.9E6	218.8E6	480.036	470.219
9) T	2,4-D	7.306	7.878	841.2E6	258.8E6	486.621	478.525
10) T	Pentachlo...	7.536	8.306	10412.3E6	3217.7E6	496.147	480.555
11) T	2,4,5-TP ...	8.060	8.665	4061.8E6	1176.8E6	485.992	471.216
12) T	2,4,5-T	8.316	9.037	4105.4E6	1172.5E6	507.910	480.518
13) T	2,4-DB	8.824	9.542	509.7E6	144.3E6	517.600	463.924
14) T	DINOSEB	9.880	9.871	2759.8E6	818.8E6	473.071	464.519
15) T	Picloram	9.703	10.829	6168.3E6	2104.3E6	526.066	497.476
16) T	DCPA	10.145	10.796	4616.3E6	1311.5E6	490.689	472.763

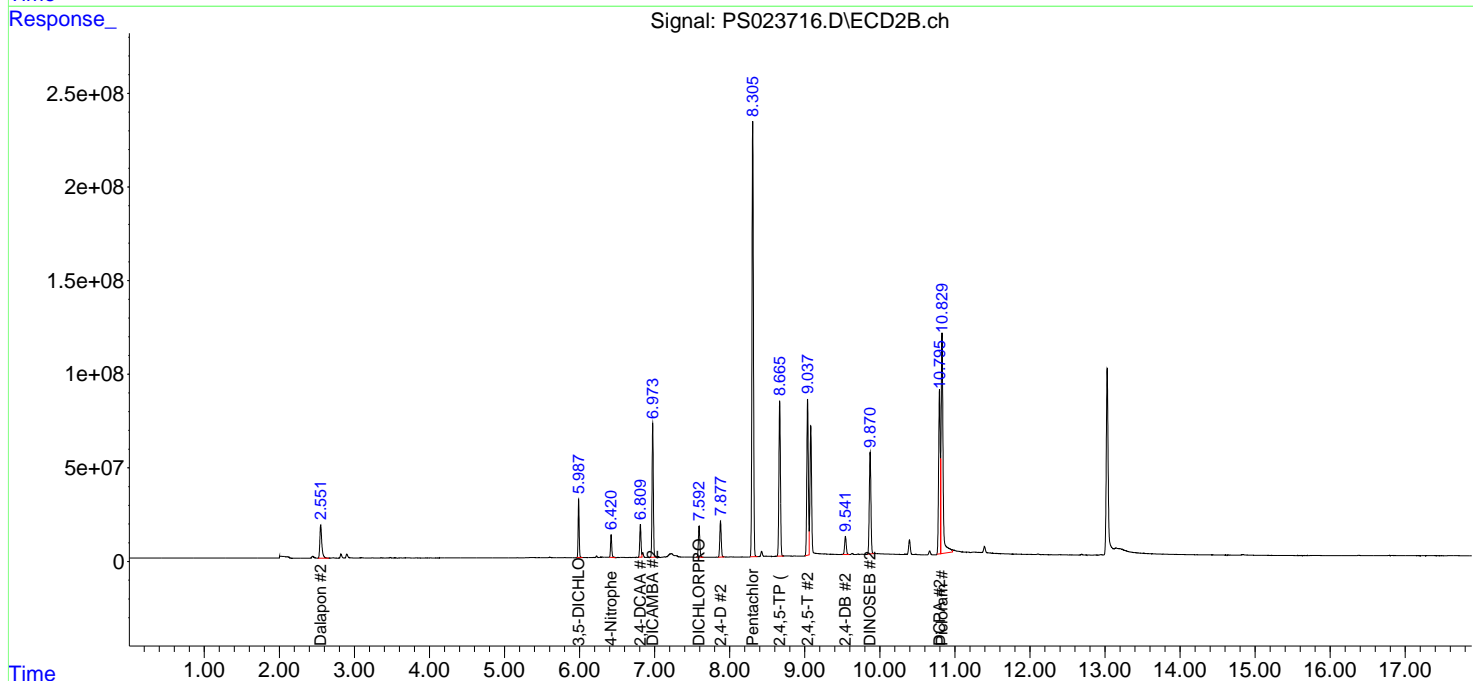
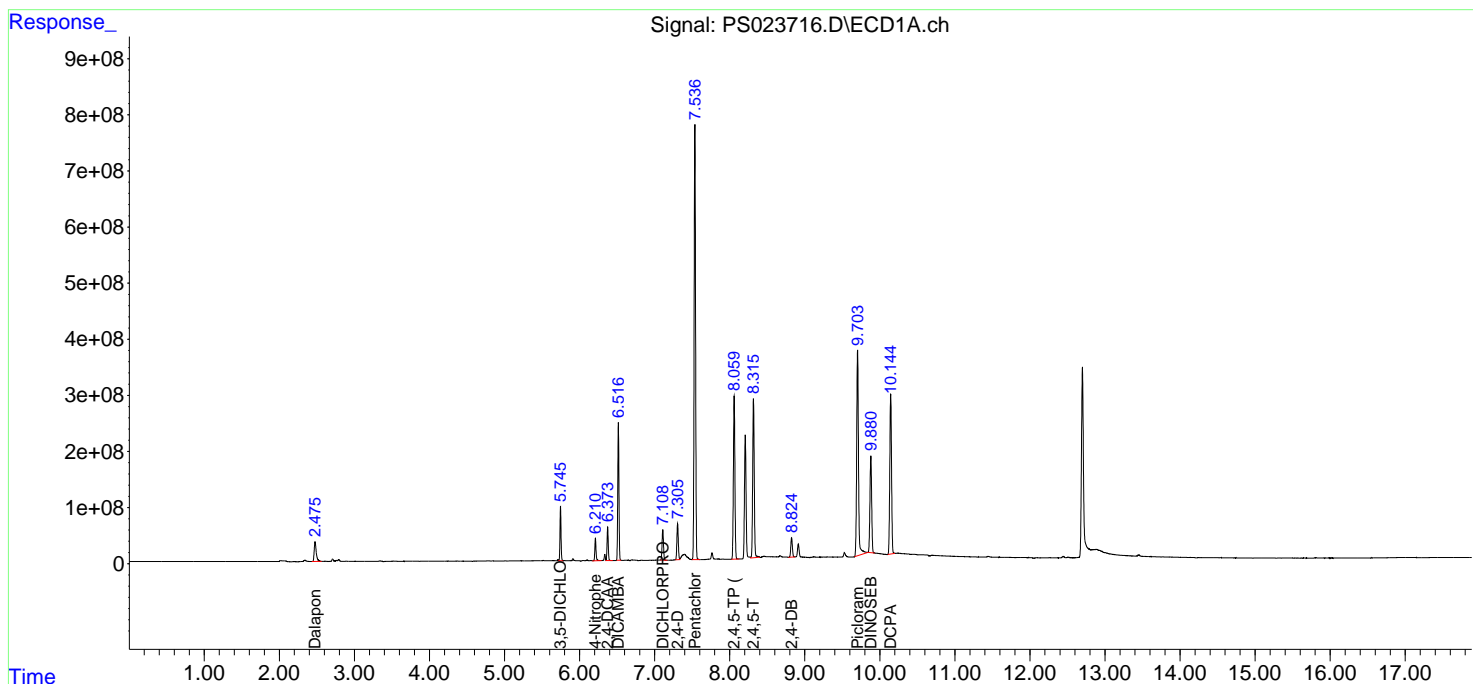
(f)=RT Delta > 1/2 Window (#)=Amounts differ by > 25% (m)=manual int.

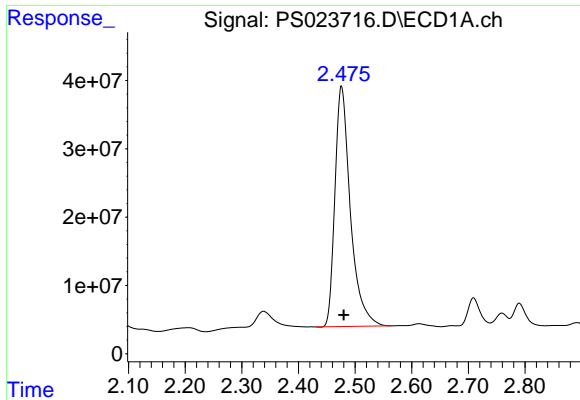
Data Path : Z:\pestpcbsrv\HPCHEM1\ECD_S\Data\PS071323\
 Data File : PS023716.D
 Signal(s) : Signal #1: ECD1A.ch Signal #2: ECD2B.ch
 Acq On : 13 Jul 2023 19:38
 Operator : AR\AJ
 Sample : PB154162BS
 Misc :
 ALS Vial : 8 Sample Multiplier: 1

Instrument :
 ECD_S
 ClientSampleId :

Integration File signal 1: autoint1.e
 Integration File signal 2: autoint2.e
 Quant Time: Jul 13 23:12:21 2023
 Quant Method : Z:\pestpcbsrv\HPCHEM1\ECD_S\Method\PS070723.M
 Quant Title : 8080.M
 QLast Update : Fri Jul 07 18:46:40 2023
 Response via : Initial Calibration
 Integrator: ChemStation

Volume Inj. : 2 µl
 Signal #1 Phase : Rtx-CLPesticides Signal #2 Phase: Rtx-CLPesticides2
 Signal #1 Info : 30M x 0.32mm x0.5 Signal #2 Info : 30M x 0.32mm x 0.25µm

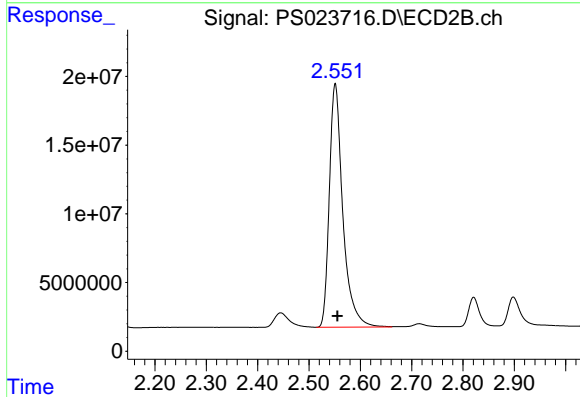




#1 Dalapon

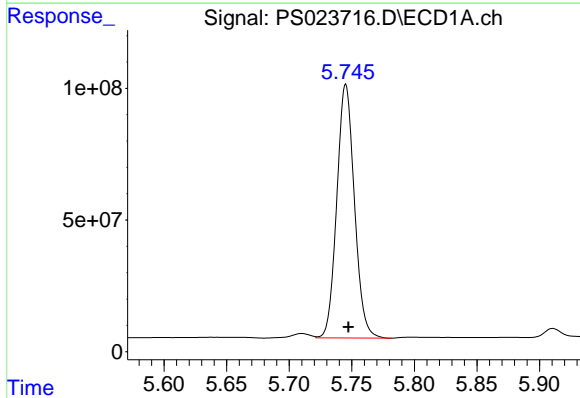
R.T.: 2.476 min
 Delta R.T.: -0.004 min
 Response: 667395681
 Conc: 474.61 ng/ml

Instrument :
 ECD_S
 ClientSampleId :



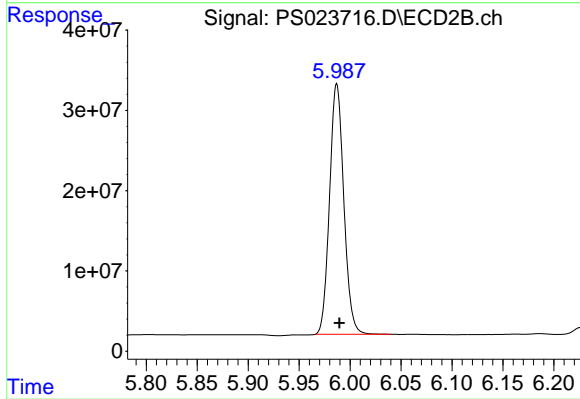
#1 Dalapon

R.T.: 2.551 min
 Delta R.T.: -0.004 min
 Response: 323097273
 Conc: 461.60 ng/ml



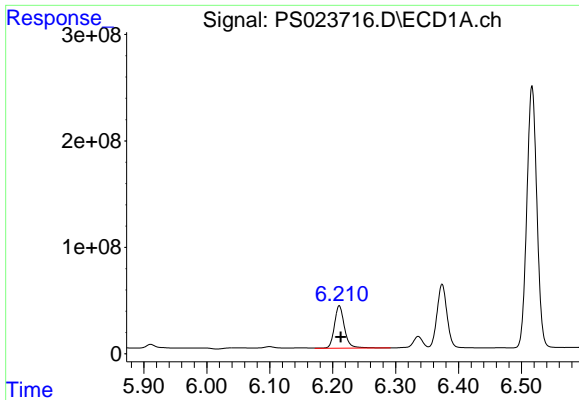
#2 3,5-DICHLOROBENZOIC ACID

R.T.: 5.745 min
 Delta R.T.: -0.002 min
 Response: 944140290
 Conc: 487.25 ng/ml



#2 3,5-DICHLOROBENZOIC ACID

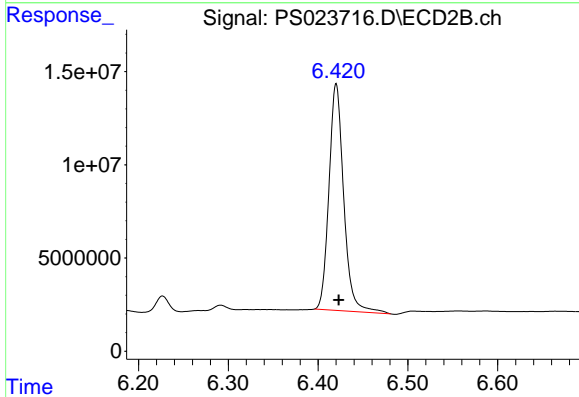
R.T.: 5.987 min
 Delta R.T.: -0.002 min
 Response: 303509905
 Conc: 468.63 ng/ml



#3 4-Nitrophenol

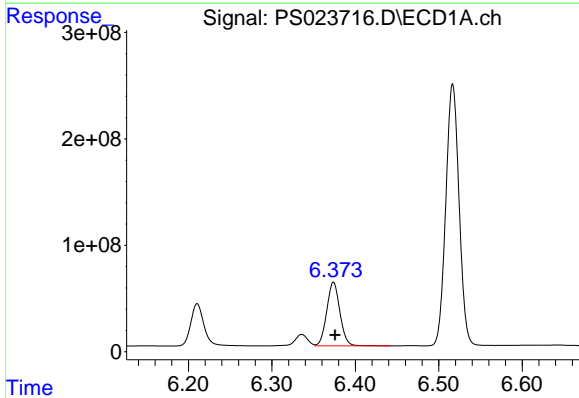
R.T.: 6.211 min
 Delta R.T.: -0.002 min
 Response: 443215508
 Conc: 495.27 ng/ml

Instrument :
 ECD_S
 ClientSampleId :



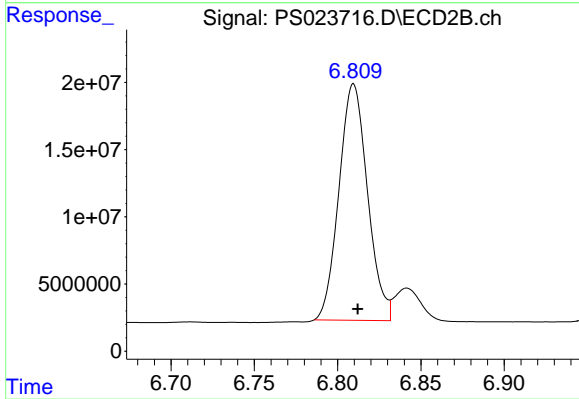
#3 4-Nitrophenol

R.T.: 6.420 min
 Delta R.T.: -0.003 min
 Response: 138734885
 Conc: 481.01 ng/ml



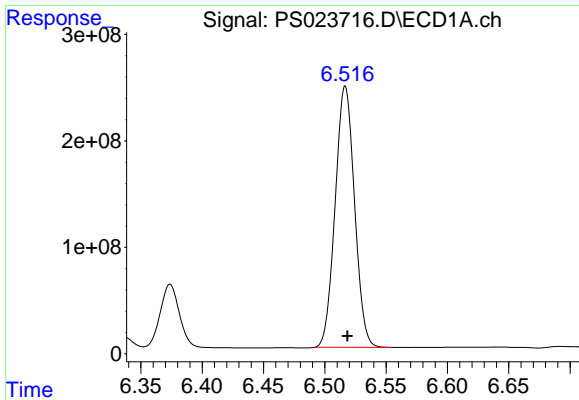
#4 2,4-DCAA

R.T.: 6.374 min
 Delta R.T.: -0.002 min
 Response: 653213773
 Conc: 517.19 ng/ml



#4 2,4-DCAA

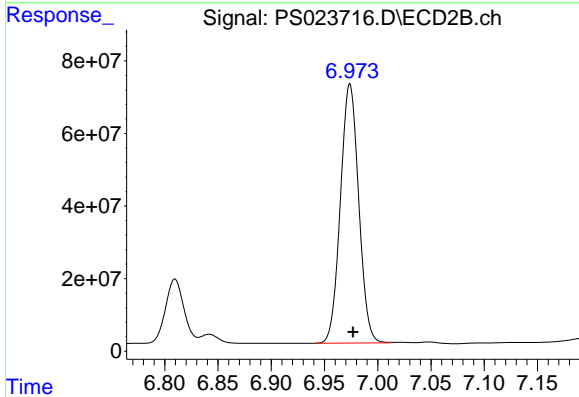
R.T.: 6.810 min
 Delta R.T.: -0.003 min
 Response: 209699775
 Conc: 499.95 ng/ml



#5 DICAMBA

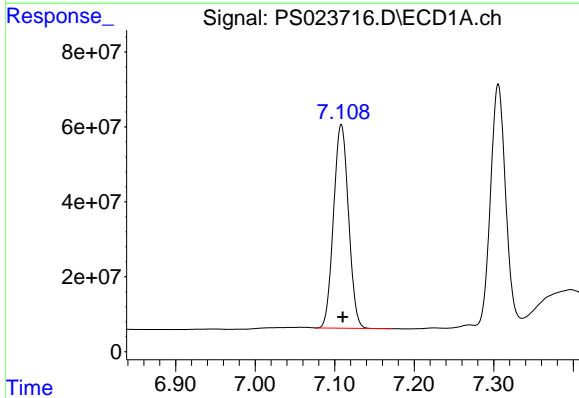
R.T.: 6.517 min
 Delta R.T.: -0.002 min
 Response: 2696002682
 Conc: 483.31 ng/ml

Instrument :
 ECD_S
 ClientSampleId :



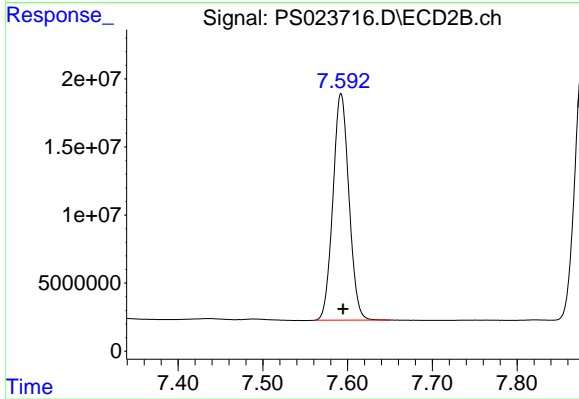
#5 DICAMBA

R.T.: 6.974 min
 Delta R.T.: -0.003 min
 Response: 854046260
 Conc: 471.43 ng/ml



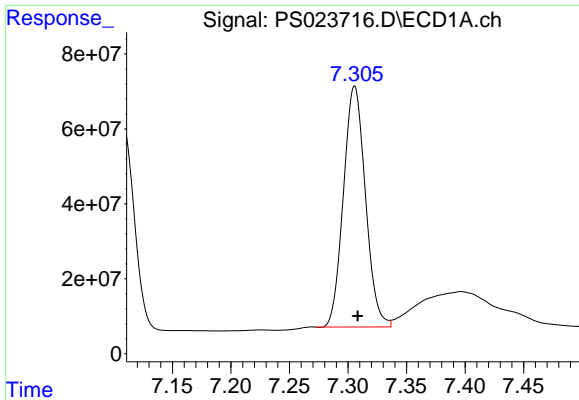
#8 DICHLORPROP

R.T.: 7.108 min
 Delta R.T.: -0.002 min
 Response: 709947555
 Conc: 480.04 ng/ml



#8 DICHLORPROP

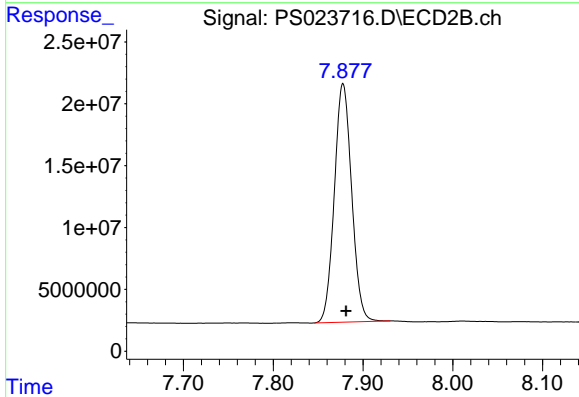
R.T.: 7.592 min
 Delta R.T.: -0.002 min
 Response: 218801570
 Conc: 470.22 ng/ml



#9 2,4-D

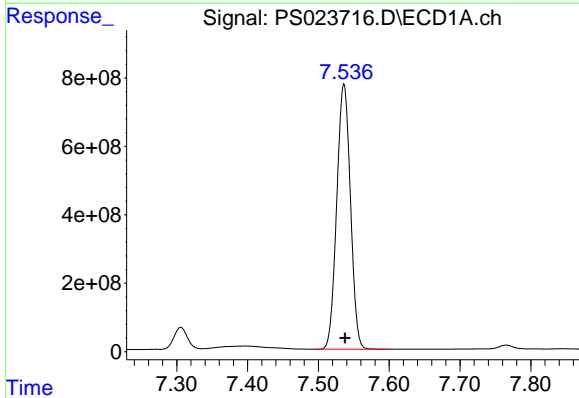
R.T.: 7.306 min
 Delta R.T.: -0.003 min
 Response: 841206540
 Conc: 486.62 ng/ml

Instrument :
 ECD_S
 ClientSampleId :



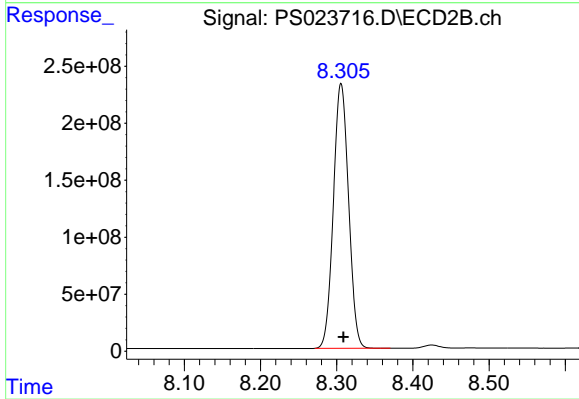
#9 2,4-D

R.T.: 7.878 min
 Delta R.T.: -0.003 min
 Response: 258773713
 Conc: 478.52 ng/ml



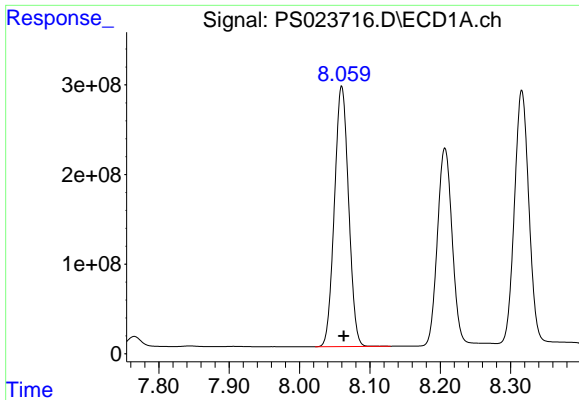
#10 Pentachlorophenol

R.T.: 7.536 min
 Delta R.T.: -0.002 min
 Response: 10412278437
 Conc: 496.15 ng/ml



#10 Pentachlorophenol

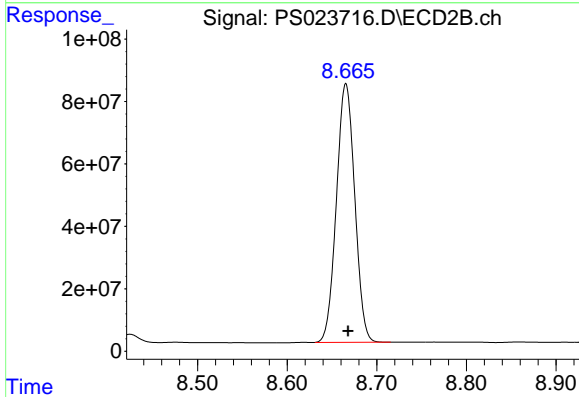
R.T.: 8.306 min
 Delta R.T.: -0.003 min
 Response: 3217670432
 Conc: 480.55 ng/ml



#11 2,4,5-TP (SILVEX)

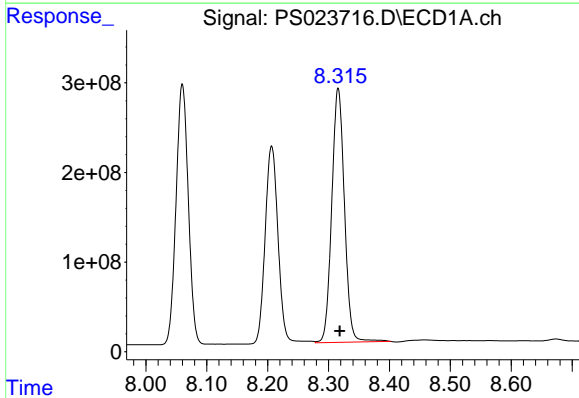
R.T.: 8.060 min
 Delta R.T.: -0.003 min
 Response: 4061790520
 Conc: 485.99 ng/ml

Instrument :
 ECD_S
 ClientSampleId :



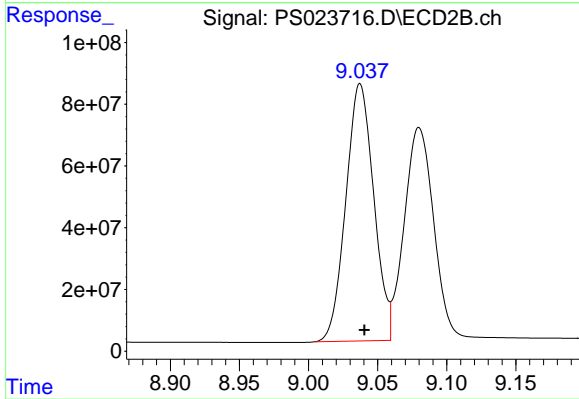
#11 2,4,5-TP (SILVEX)

R.T.: 8.665 min
 Delta R.T.: -0.002 min
 Response: 1176761364
 Conc: 471.22 ng/ml



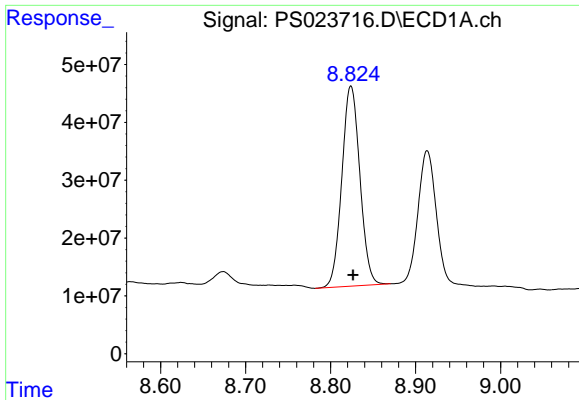
#12 2,4,5-T

R.T.: 8.316 min
 Delta R.T.: -0.002 min
 Response: 4105351160
 Conc: 507.91 ng/ml



#12 2,4,5-T

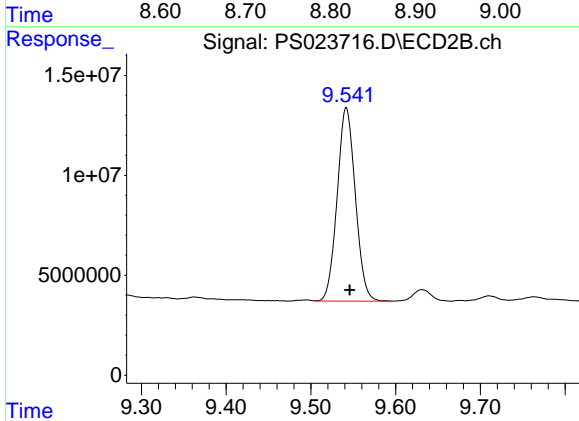
R.T.: 9.037 min
 Delta R.T.: -0.003 min
 Response: 1172502324
 Conc: 480.52 ng/ml



#13 2,4-DB

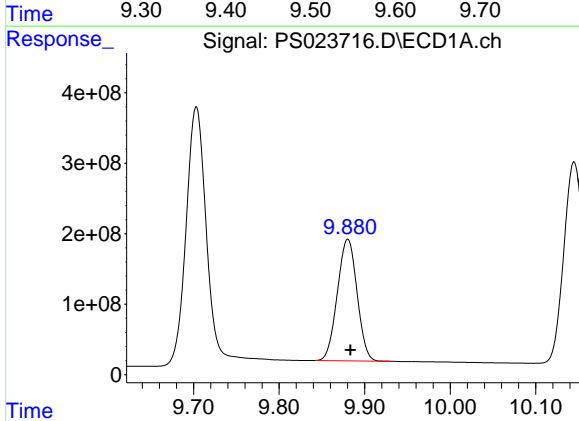
R.T.: 8.824 min
 Delta R.T.: -0.003 min
 Response: 509669419
 Conc: 517.60 ng/ml

Instrument :
 ECD_S
 ClientSampleId :



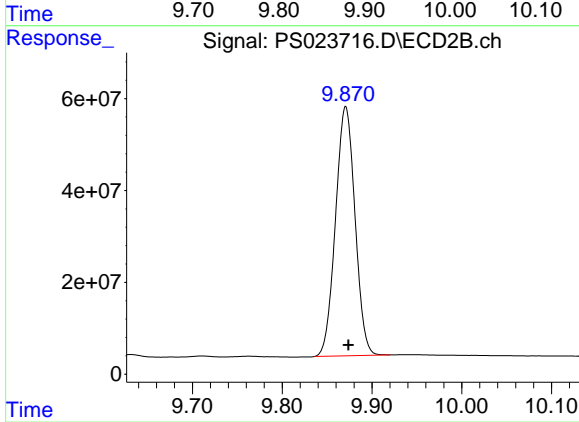
#13 2,4-DB

R.T.: 9.542 min
 Delta R.T.: -0.004 min
 Response: 144349111
 Conc: 463.92 ng/ml



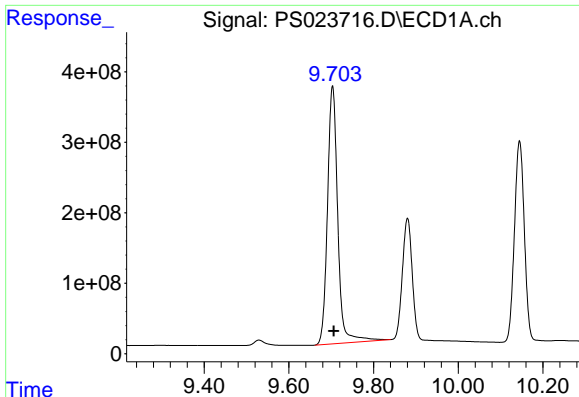
#14 DINOSEB

R.T.: 9.880 min
 Delta R.T.: -0.003 min
 Response: 2759782398
 Conc: 473.07 ng/ml



#14 DINOSEB

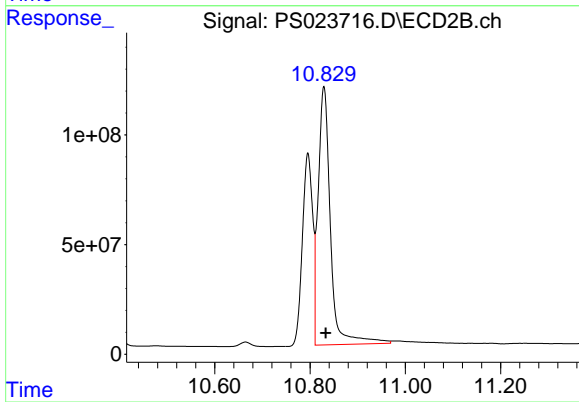
R.T.: 9.871 min
 Delta R.T.: -0.003 min
 Response: 818821516
 Conc: 464.52 ng/ml



#15 Picloram

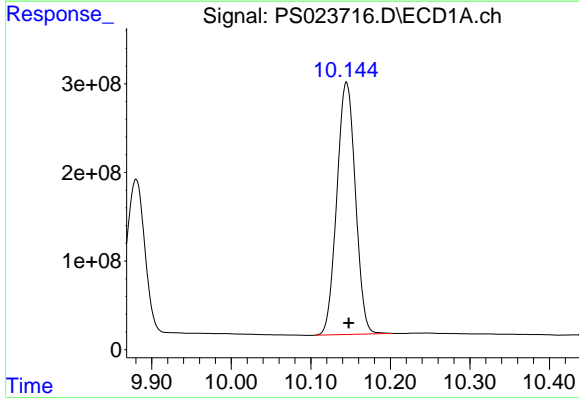
R.T.: 9.703 min
 Delta R.T.: -0.003 min
 Response: 6168323082
 Conc: 526.07 ng/ml

Instrument :
 ECD_S
 ClientSampleId :



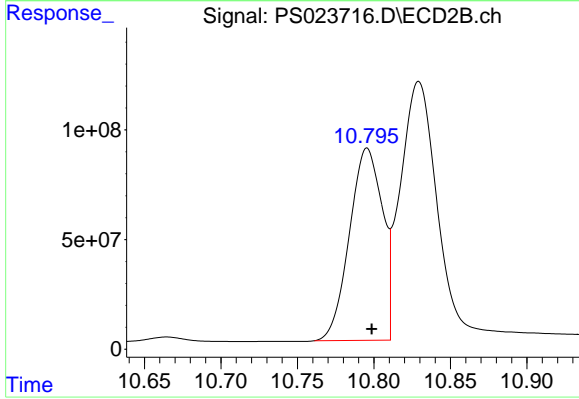
#15 Picloram

R.T.: 10.829 min
 Delta R.T.: -0.004 min
 Response: 2104317384
 Conc: 497.48 ng/ml



#16 DCPA

R.T.: 10.145 min
 Delta R.T.: -0.003 min
 Response: 4616301415
 Conc: 490.69 ng/ml



#16 DCPA

R.T.: 10.796 min
 Delta R.T.: -0.003 min
 Response: 1311536526
 Conc: 472.76 ng/ml