

Data Path : Z:\pestpcbsrv\HPCHEM1\ECD\_0\Data\P0071420\  
 Data File : P0069637.D  
 Signal(s) : Signal #1: ECD1A.CH Signal #2: ECD2B.CH  
 Acq On : 14 Jul 2020 22:10  
 Operator : DD\AJ  
 Sample : L3294-06MSD  
 Misc :  
 ALS Vial : 21 Sample Multiplier: 1

Instrument :  
 ECD\_S  
 ClientSampled :

Integration File signal 1: autoint1.e  
 Integration File signal 2: autoint2.e  
 Quant Time: Jul 15 05:51:11 2020  
 Quant Method : Z:\pestpcbsrv\HPCHEM1\ECD\_0\methods\P0070820.M  
 Quant Title : GC EXTRACTABLES  
 QLast Update : Wed Jul 08 16:12:41 2020  
 Response via : Initial Calibration  
 Integrator: ChemStation 6890 Scale Mode: Small noise peaks clipped

Volume Inj. : 2 µl  
 Signal #1 Phase : ZB-MR1 Signal #2 Phase: ZB-MR2  
 Signal #1 Info : 30Mx0.32mmx 0.50µ Signal #2 Info : 30M x 0.32mm x 0.25µm

Compound	RT#1	RT#2	Resp#1	Resp#2	ng/ml	ng/ml
System Monitoring Compounds						
1) SA Tetrachlo...	4.391	3.565	981553	1015152	26.290	25.509
2) SA Decachlor...	10.049	8.770	1027776	1005542	17.082	17.718
Target Compounds						
3) L1 AR-1016-1	5.699	4.796	520555	473205	290.579	281.398
4) L1 AR-1016-2	5.721	4.814	727476	653919	286.959	281.216
5) L1 AR-1016-3	5.785	4.999	433903	361554	282.911	283.824
6) L1 AR-1016-4	5.891	5.057	367536	303975	283.606	278.358
7) L1 AR-1016-5	6.202	5.278	402751	371311	305.670	269.936
8) L2 AR-1221-1	0.000	3.816	0	43938	N.D.	91.922 #
9) L2 AR-1221-2	4.743	3.913	50919	58925	166.092	164.675
10) L2 AR-1221-3	4.829	3.999	224757	243694	221.187	222.829
11) L3 AR-1232-1	4.829	3.999	224757	243694	276.314	272.562
12) L3 AR-1232-2	5.405	4.814	350245	653919	817.192	676.433
13) L3 AR-1232-3	5.721	4.999	727476	361554	727.745	692.002
14) L3 AR-1232-4	5.891	5.099	367536	345801	751.170	788.718
15) L3 AR-1232-5	5.990	5.278	284103	371311	895.226	709.775
16) L4 AR-1242-1	5.699	4.796	520555	473205	399.387	377.394
17) L4 AR-1242-2	5.721	4.814	727476	653919	386.321	374.280
18) L4 AR-1242-3	5.785	4.999	433903	361554	382.087	375.573
19) L4 AR-1242-4	5.891	5.099	367536	345801	383.011	382.238
20) L4 AR-1242-5	6.666	5.653	74353	317642	62.632	250.614 #
21) L5 AR-1248-1	5.699	4.796	520555	473205	533.047	483.529
22) L5 AR-1248-2	5.990	5.057	284103	303975	223.135	223.285
23) L5 AR-1248-3	6.202	5.099	402751	345801	254.829	273.807
24) L5 AR-1248-4	6.622	5.278	123857	371311	61.041	228.590 #
25) L5 AR-1248-5	6.666	5.696	74353	47781	38.741	28.955 #
26) L6 AR-1254-1	6.594	5.653	352525	317642	177.096	122.025 #
27) L6 AR-1254-2	6.825	5.815	448821	303305	139.809	131.382
28) L6 AR-1254-3	7.200	6.226	483157	212336	137.570	56.540 #
29) L6 AR-1254-4	7.493	6.466	394601	107404	131.847	42.500 #
30) L6 AR-1254-5	7.918	6.892	1228307	1958658	408.239	545.747 #
31) L7 AR-1260-1	7.364	6.364	956818	779773	363.890	295.641
32) L7 AR-1260-2	7.633	6.564	1803812	1019121	508.488	311.357 #
33) L7 AR-1260-3	7.989	6.712	676034	850648	233.842	279.392
34) L7 AR-1260-4	8.216	7.190	712802	617125	240.654	227.992
35) L7 AR-1260-5	8.532	7.441	1523406	1360350	225.143	212.269
36) L8 AR-1262-1	7.989	6.892	676034	1958658	169.881	1014.324 #
37) L8 AR-1262-2	8.532	7.441	1523406	1360350	211.053	208.347
38) L8 AR-1262-3	8.802	7.723	272212	332094	56.850	123.224 #
39) L8 AR-1262-4	8.866f	7.784	504982	1022827	260.513	205.422
40) L8 AR-1262-5	9.444	8.283	336642	343846	129.075	138.375
41) L9 AR-1268-1	8.802	7.723	272212	332094	29.697	42.423 #

Data Path : Z:\pestpcbsrv\HPCHEM1\ECD\_0\Data\P0071420\  
 Data File : P0069637.D  
 Signal(s) : Signal #1: ECD1A.CH Signal #2: ECD2B.CH  
 Acq On : 14 Jul 2020 22:10  
 Operator : DD\AJ  
 Sample : L3294-06MSD  
 Misc :  
 ALS Vial : 21 Sample Multiplier: 1

Instrument :  
 ECD\_S  
 ClientSampleId :

Integration File signal 1: autoint1.e  
 Integration File signal 2: autoint2.e  
 Quant Time: Jul 15 05:51:11 2020  
 Quant Method : Z:\pestpcbsrv\HPCHEM1\ECD\_0\methods\P0070820.M  
 Quant Title : GC EXTRACTABLES  
 QLast Update : Wed Jul 08 16:12:41 2020  
 Response via : Initial Calibration  
 Integrator: ChemStation 6890 Scale Mode: Small noise peaks clipped

Volume Inj. : 2 µl  
 Signal #1 Phase : ZB-MR1 Signal #2 Phase: ZB-MR2  
 Signal #1 Info : 30Mx0.32mmx 0.50µ Signal #2 Info : 30M x 0.32mm x 0.25µm

	Compound	RT#1	RT#2	Resp#1	Resp#2	ng/ml	ng/ml
42)	L9 AR-1268-2	8.866f	7.784	504982	1022827	60.925	143.193 #
44)	L9 AR-1268-4	9.444	8.283	336642	343846	111.069	118.894
45)	L9 AR-1268-5	9.781	8.553	112851	130843	5.080	6.786 #

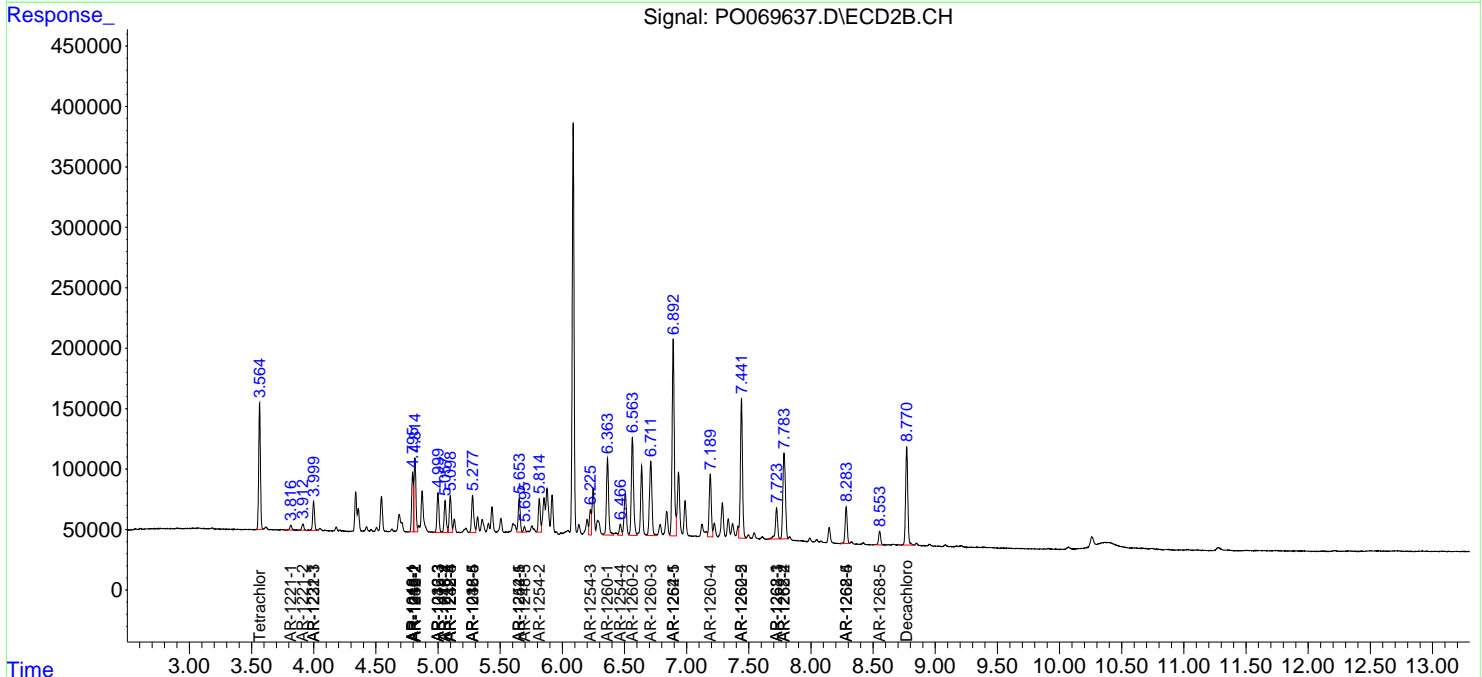
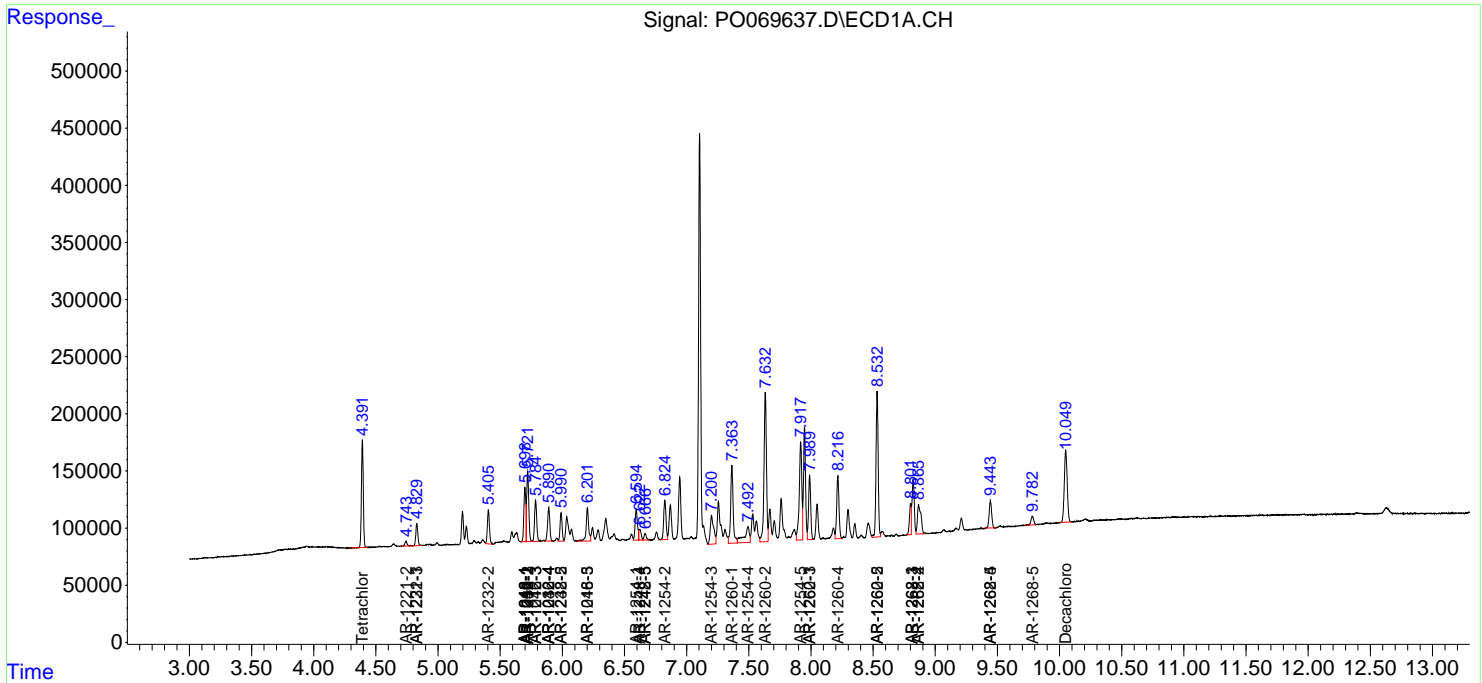
(f)=RT Delta > 1/2 Window (#)=Amounts differ by > 25% (m)=manual int.

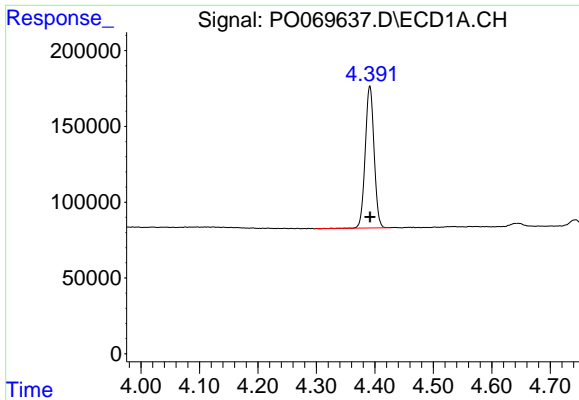
Data Path : Z:\pestpcbsrv\HPCHEM1\ECD\_0\Data\P0071420\  
 Data File : P0069637.D  
 Signal(s) : Signal #1: ECD1A.CH Signal #2: ECD2B.CH  
 Acq On : 14 Jul 2020 22:10  
 Operator : DD\AJ  
 Sample : L3294-06MSD  
 Misc :  
 ALS Vial : 21 Sample Multiplier: 1

Instrument :  
 ECD\_S  
 ClientSampled :

Integration File signal 1: autoint1.e  
 Integration File signal 2: autoint2.e  
 Quant Time: Jul 15 05:51:11 2020  
 Quant Method : Z:\pestpcbsrv\HPCHEM1\ECD\_0\methods\P0070820.M  
 Quant Title : GC EXTRACTABLES  
 QLast Update : Wed Jul 08 16:12:41 2020  
 Response via : Initial Calibration  
 Integrator: ChemStation 6890 Scale Mode: Small noise peaks clipped

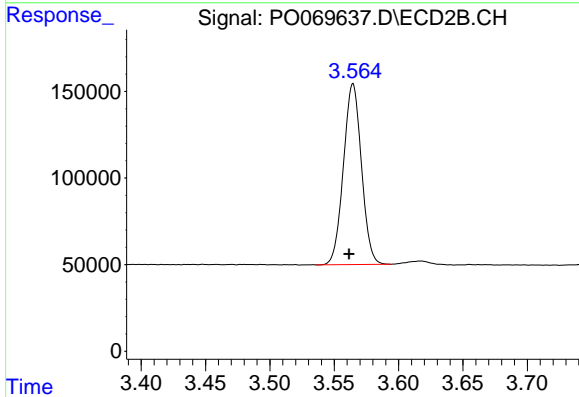
Volume Inj. : 2 µl  
 Signal #1 Phase : ZB-MR1 Signal #2 Phase: ZB-MR2  
 Signal #1 Info : 30Mx0.32mmx 0.50µ Signal #2 Info : 30M x 0.32mm x 0.25µm



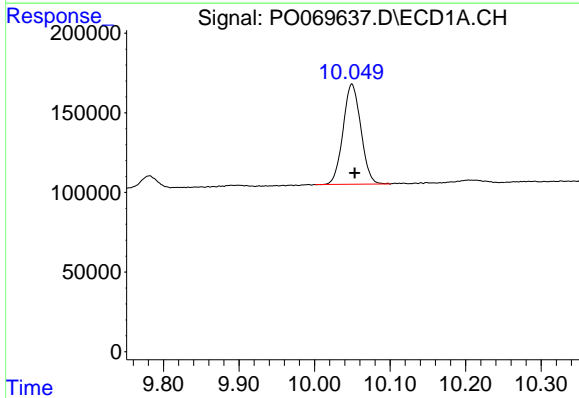


#1 Tetrachloro-m-xylene  
 R.T.: 4.391 min  
 Delta R.T.: 0.000 min  
 Response: 981553  
 Conc: 26.29 ng/ml

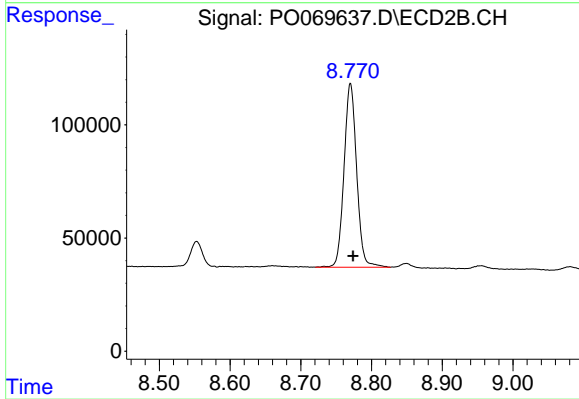
Instrument :  
 ECD\_S  
 ClientSampled :



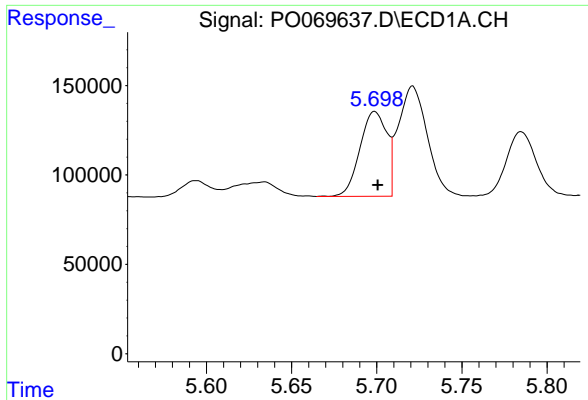
#1 Tetrachloro-m-xylene  
 R.T.: 3.565 min  
 Delta R.T.: 0.003 min  
 Response: 1015152  
 Conc: 25.51 ng/ml



#2 Decachlorobiphenyl  
 R.T.: 10.049 min  
 Delta R.T.: -0.004 min  
 Response: 1027776  
 Conc: 17.08 ng/ml



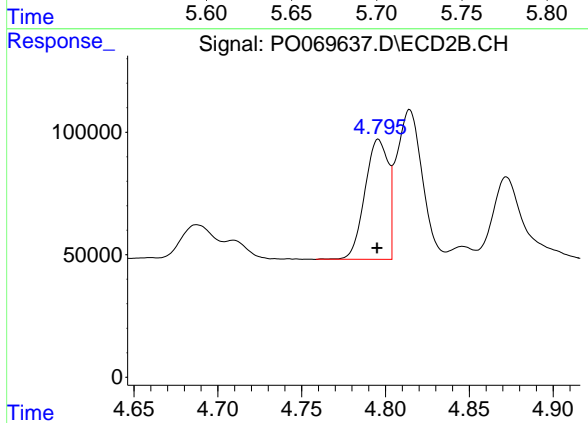
#2 Decachlorobiphenyl  
 R.T.: 8.770 min  
 Delta R.T.: -0.004 min  
 Response: 1005542  
 Conc: 17.72 ng/ml



#3 AR-1016-1

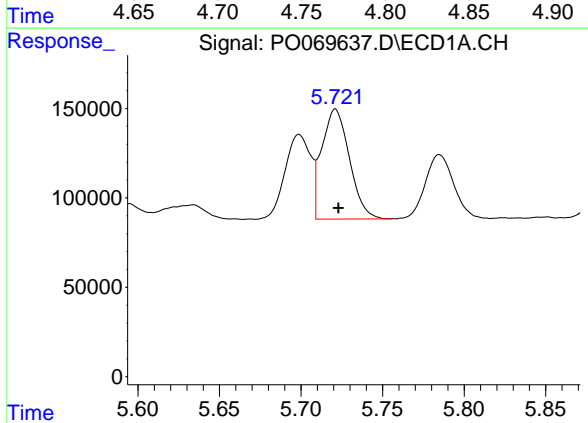
R.T.: 5.699 min  
 Delta R.T.: -0.002 min  
 Response: 520555  
 Conc: 290.58 ng/ml

Instrument :  
 ECD\_S  
 ClientSampleId :



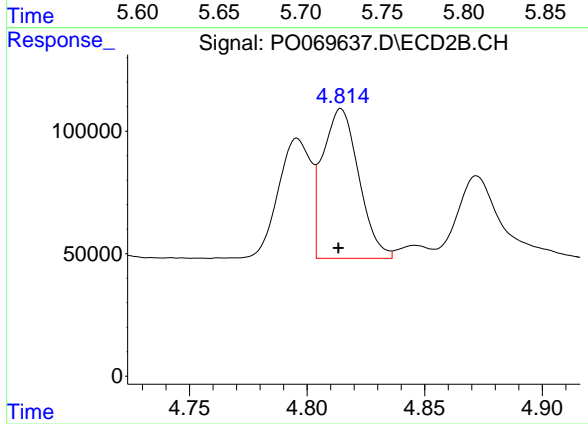
#3 AR-1016-1

R.T.: 4.796 min  
 Delta R.T.: 0.000 min  
 Response: 473205  
 Conc: 281.40 ng/ml



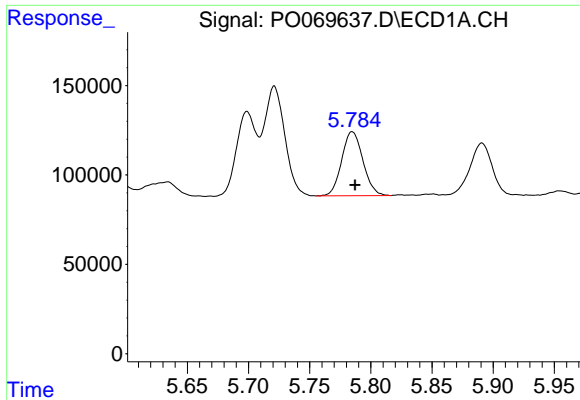
#4 AR-1016-2

R.T.: 5.721 min  
 Delta R.T.: -0.002 min  
 Response: 727476  
 Conc: 286.96 ng/ml



#4 AR-1016-2

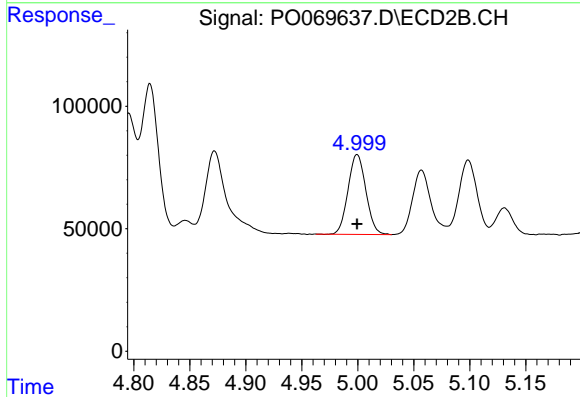
R.T.: 4.814 min  
 Delta R.T.: 0.001 min  
 Response: 653919  
 Conc: 281.22 ng/ml



#5 AR-1016-3

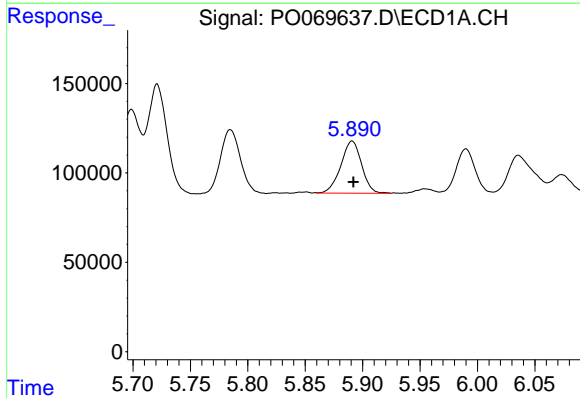
R.T.: 5.785 min  
 Delta R.T.: -0.002 min  
 Response: 433903  
 Conc: 282.91 ng/ml

Instrument :  
 ECD\_S  
 ClientSampleId :



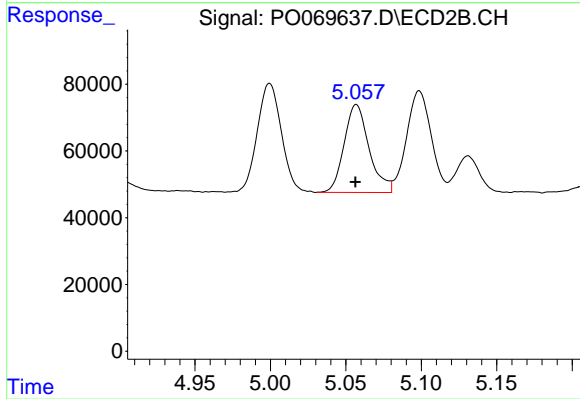
#5 AR-1016-3

R.T.: 4.999 min  
 Delta R.T.: 0.000 min  
 Response: 361554  
 Conc: 283.82 ng/ml



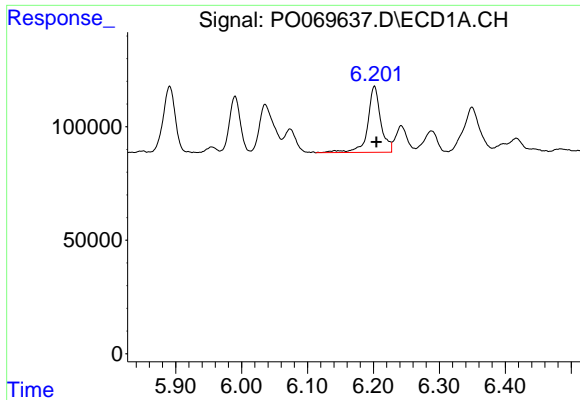
#6 AR-1016-4

R.T.: 5.891 min  
 Delta R.T.: -0.001 min  
 Response: 367536  
 Conc: 283.61 ng/ml



#6 AR-1016-4

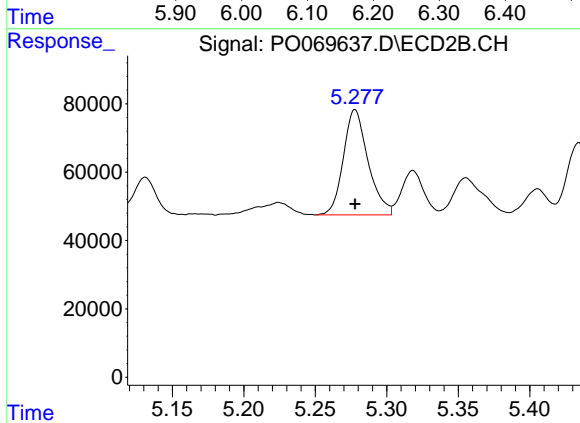
R.T.: 5.057 min  
 Delta R.T.: 0.000 min  
 Response: 303975  
 Conc: 278.36 ng/ml



#7 AR-1016-5

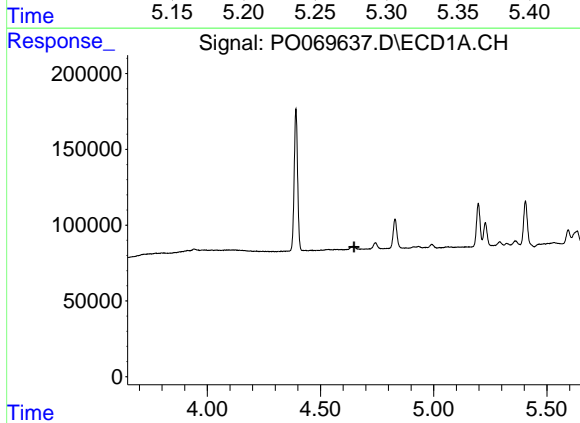
R.T.: 6.202 min  
 Delta R.T.: -0.003 min  
 Response: 402751  
 Conc: 305.67 ng/ml

Instrument :  
 ECD\_S  
 ClientSampled :



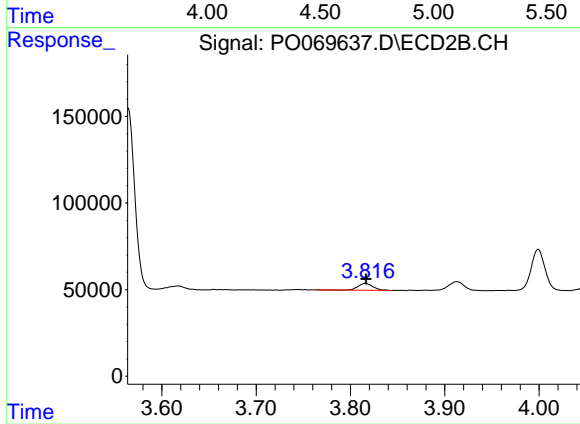
#7 AR-1016-5

R.T.: 5.278 min  
 Delta R.T.: 0.000 min  
 Response: 371311  
 Conc: 269.94 ng/ml



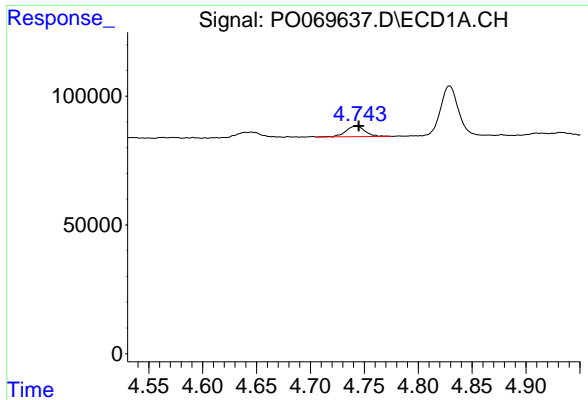
#8 AR-1221-1

R.T.: 0.000 min  
 Exp R.T. : 4.648 min  
 Response: 0  
 Conc: N.D.



#8 AR-1221-1

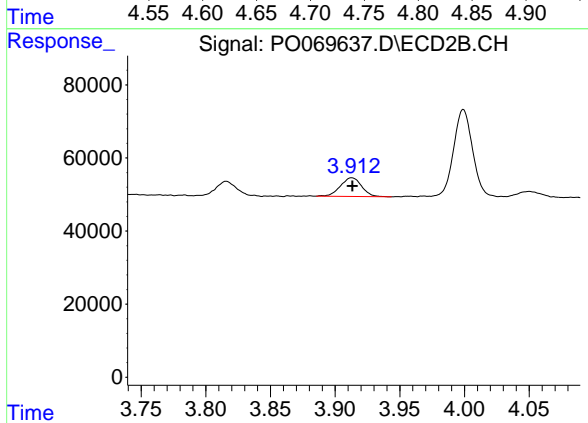
R.T.: 3.816 min  
 Delta R.T.: 0.000 min  
 Response: 43938  
 Conc: 91.92 ng/ml



#9 AR-1221-2

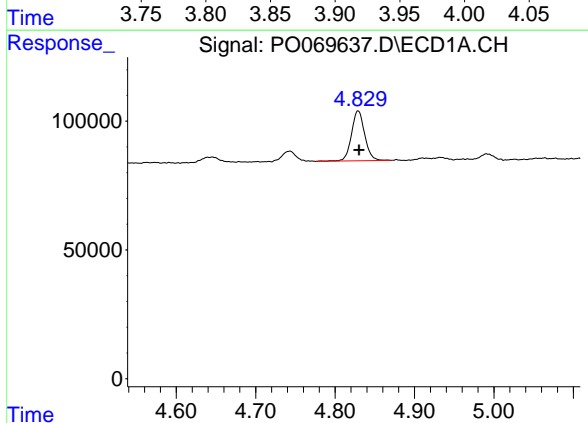
R.T.: 4.743 min  
 Delta R.T.: -0.001 min  
 Response: 50919  
 Conc: 166.09 ng/ml

Instrument :  
 ECD\_S  
 ClientSampleId :



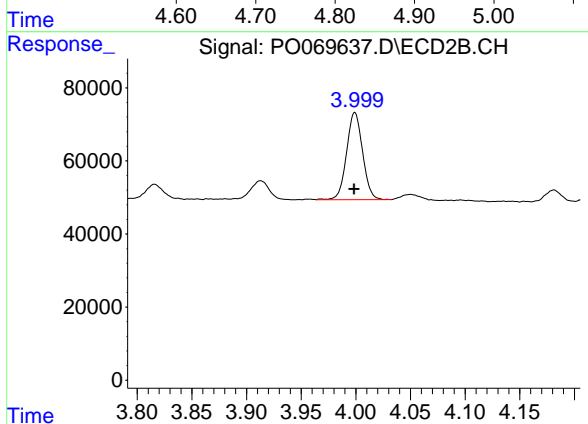
#9 AR-1221-2

R.T.: 3.913 min  
 Delta R.T.: 0.000 min  
 Response: 58925  
 Conc: 164.67 ng/ml



#10 AR-1221-3

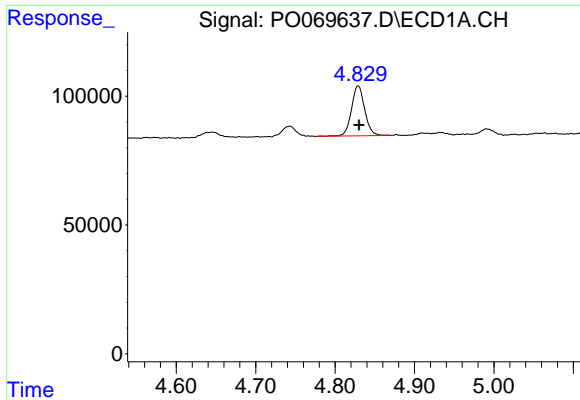
R.T.: 4.829 min  
 Delta R.T.: -0.001 min  
 Response: 224757  
 Conc: 221.19 ng/ml



#10 AR-1221-3

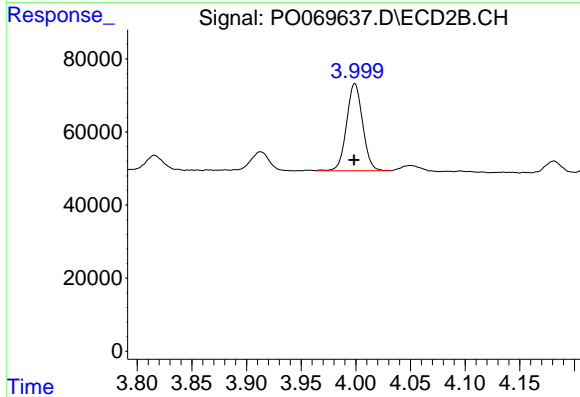
R.T.: 3.999 min  
 Delta R.T.: 0.000 min  
 Response: 243694  
 Conc: 222.83 ng/ml



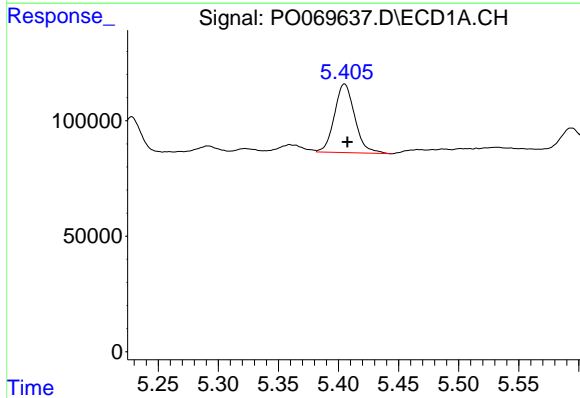


#11 AR-1232-1  
 R.T.: 4.829 min  
 Delta R.T.: -0.001 min  
 Response: 224757  
 Conc: 276.31 ng/ml

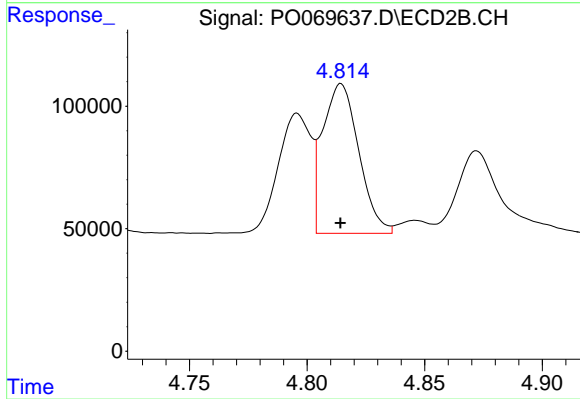
Instrument :  
 ECD\_S  
 ClientSampled :



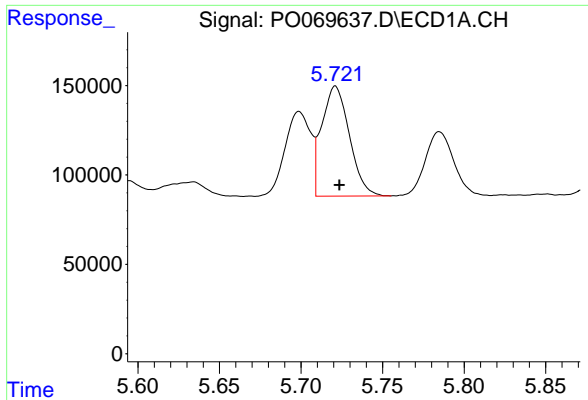
#11 AR-1232-1  
 R.T.: 3.999 min  
 Delta R.T.: 0.000 min  
 Response: 243694  
 Conc: 272.56 ng/ml



#12 AR-1232-2  
 R.T.: 5.405 min  
 Delta R.T.: -0.002 min  
 Response: 350245  
 Conc: 817.19 ng/ml



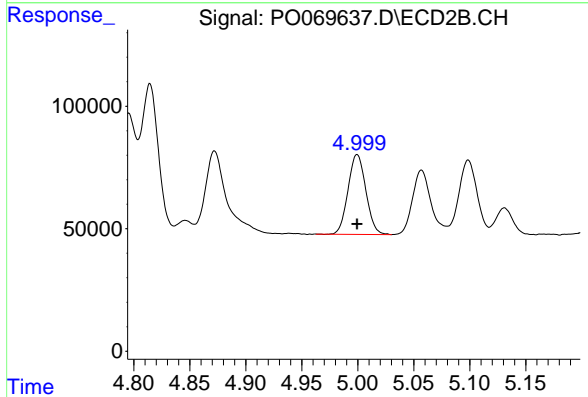
#12 AR-1232-2  
 R.T.: 4.814 min  
 Delta R.T.: 0.000 min  
 Response: 653919  
 Conc: 676.43 ng/ml



#13 AR-1232-3

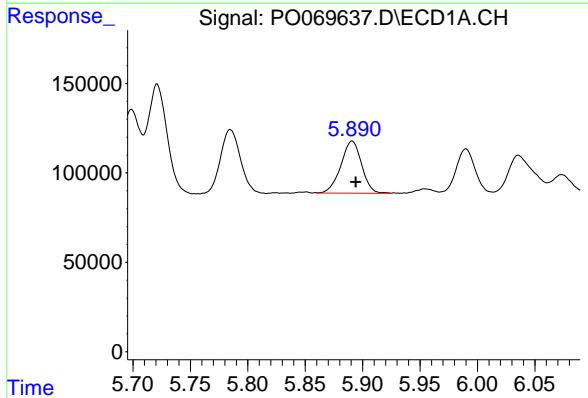
R.T.: 5.721 min  
 Delta R.T.: -0.002 min  
 Response: 727476  
 Conc: 727.74 ng/ml

Instrument :  
 ECD\_S  
 ClientSampled :



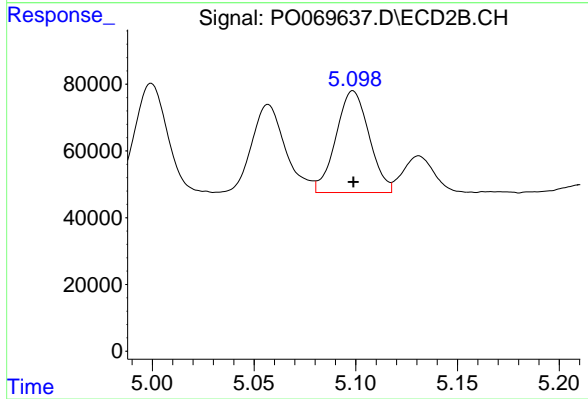
#13 AR-1232-3

R.T.: 4.999 min  
 Delta R.T.: 0.000 min  
 Response: 361554  
 Conc: 692.00 ng/ml



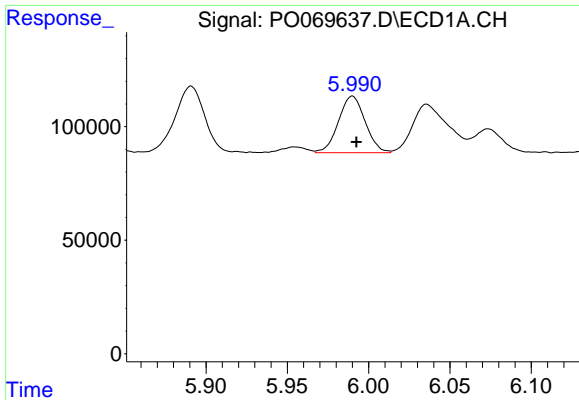
#14 AR-1232-4

R.T.: 5.891 min  
 Delta R.T.: -0.003 min  
 Response: 367536  
 Conc: 751.17 ng/ml



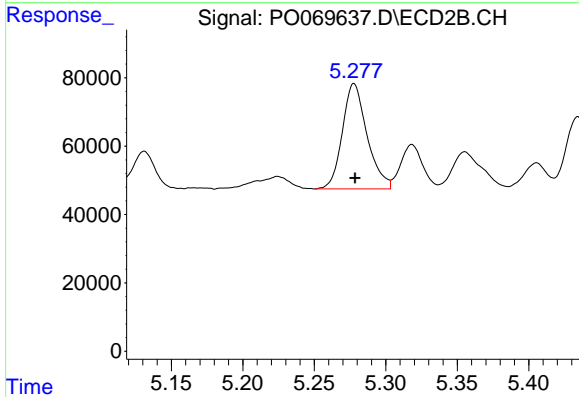
#14 AR-1232-4

R.T.: 5.099 min  
 Delta R.T.: 0.000 min  
 Response: 345801  
 Conc: 788.72 ng/ml

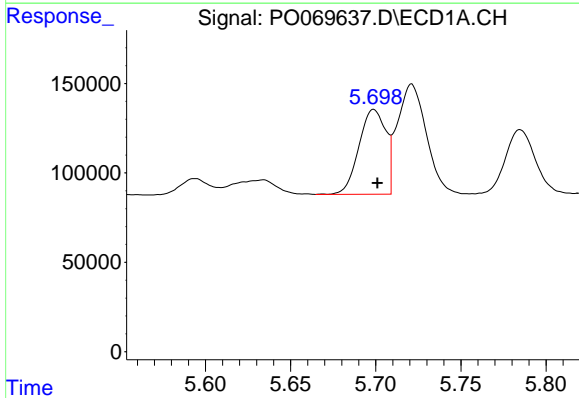


#15 AR-1232-5  
 R.T.: 5.990 min  
 Delta R.T.: -0.002 min  
 Response: 284103  
 Conc: 895.23 ng/ml

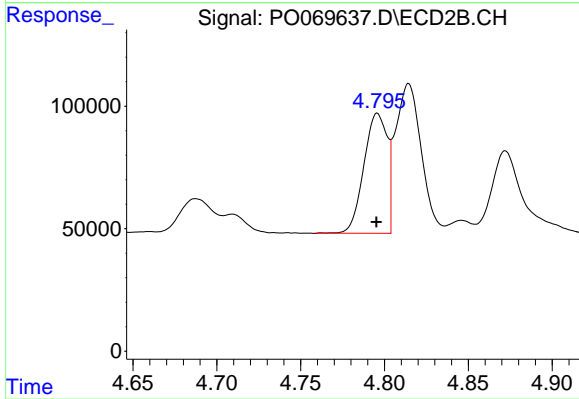
Instrument :  
 ECD\_S  
 ClientSampleId :



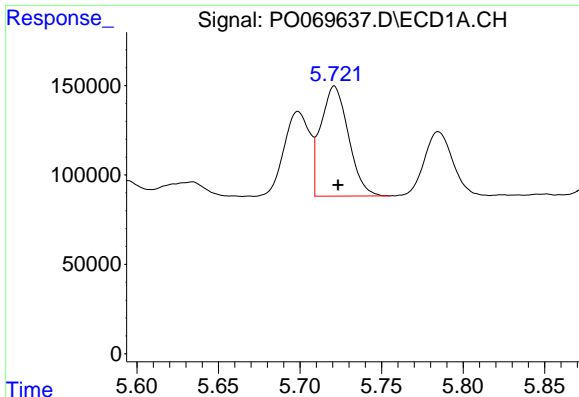
#15 AR-1232-5  
 R.T.: 5.278 min  
 Delta R.T.: 0.000 min  
 Response: 371311  
 Conc: 709.78 ng/ml



#16 AR-1242-1  
 R.T.: 5.699 min  
 Delta R.T.: -0.002 min  
 Response: 520555  
 Conc: 399.39 ng/ml



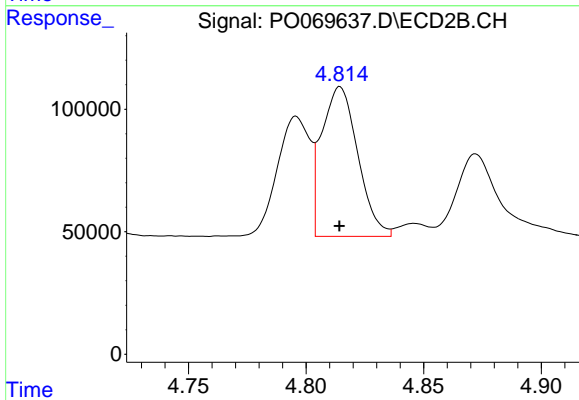
#16 AR-1242-1  
 R.T.: 4.796 min  
 Delta R.T.: 0.000 min  
 Response: 473205  
 Conc: 377.39 ng/ml



#17 AR-1242-2

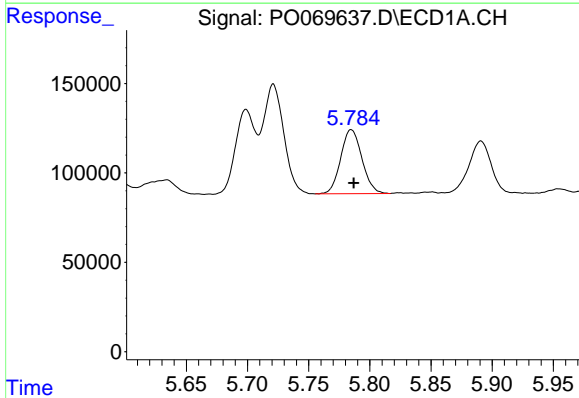
R.T.: 5.721 min  
 Delta R.T.: -0.002 min  
 Response: 727476  
 Conc: 386.32 ng/ml

Instrument :  
 ECD\_S  
 ClientSampleId :



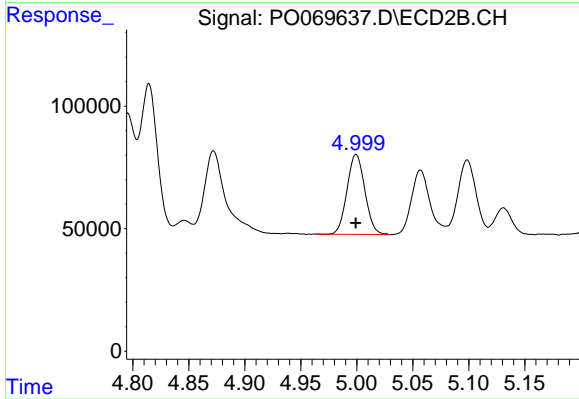
#17 AR-1242-2

R.T.: 4.814 min  
 Delta R.T.: 0.000 min  
 Response: 653919  
 Conc: 374.28 ng/ml



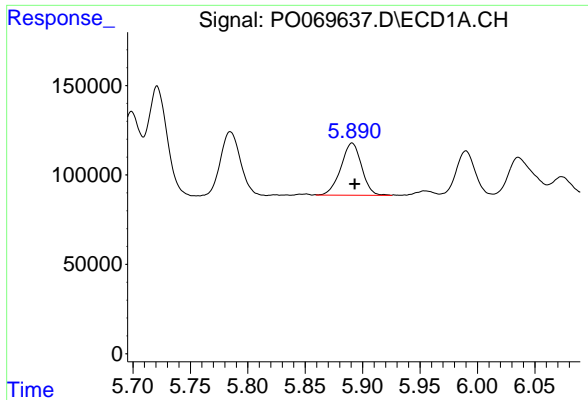
#18 AR-1242-3

R.T.: 5.785 min  
 Delta R.T.: -0.002 min  
 Response: 433903  
 Conc: 382.09 ng/ml



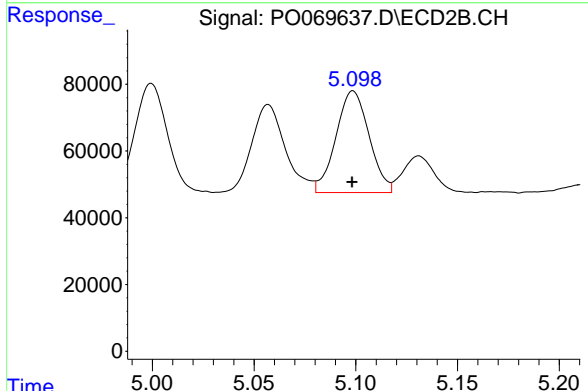
#18 AR-1242-3

R.T.: 4.999 min  
 Delta R.T.: 0.000 min  
 Response: 361554  
 Conc: 375.57 ng/ml

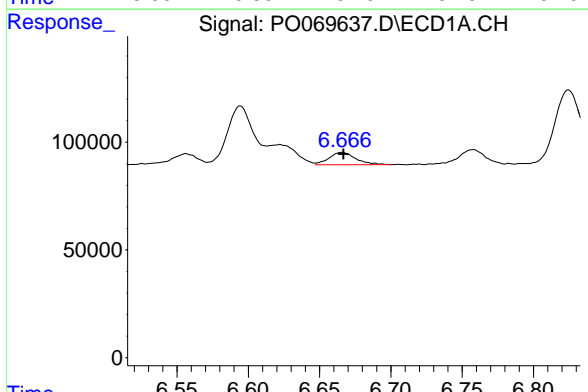


#19 AR-1242-4  
 R.T.: 5.891 min  
 Delta R.T.: -0.002 min  
 Response: 367536  
 Conc: 383.01 ng/ml

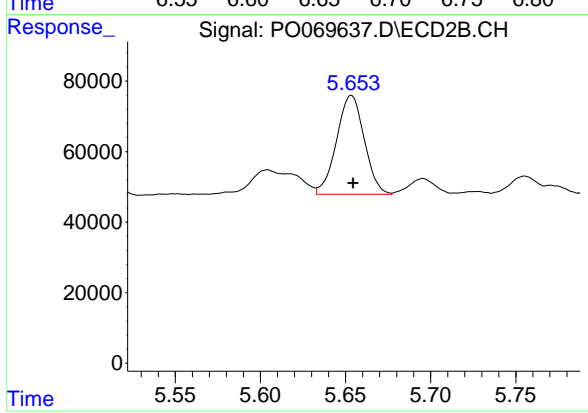
Instrument :  
 ECD\_S  
 ClientSampleId :



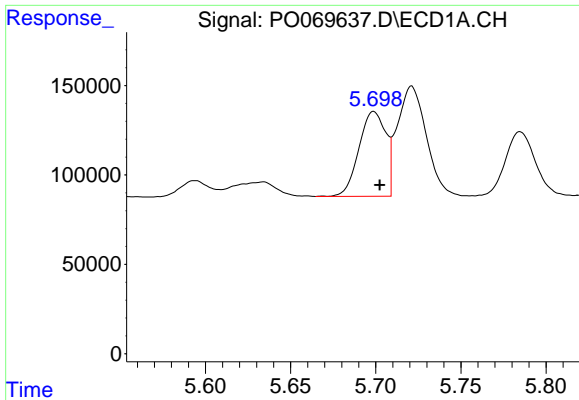
#19 AR-1242-4  
 R.T.: 5.099 min  
 Delta R.T.: 0.000 min  
 Response: 345801  
 Conc: 382.24 ng/ml



#20 AR-1242-5  
 R.T.: 6.666 min  
 Delta R.T.: 0.000 min  
 Response: 74353  
 Conc: 62.63 ng/ml



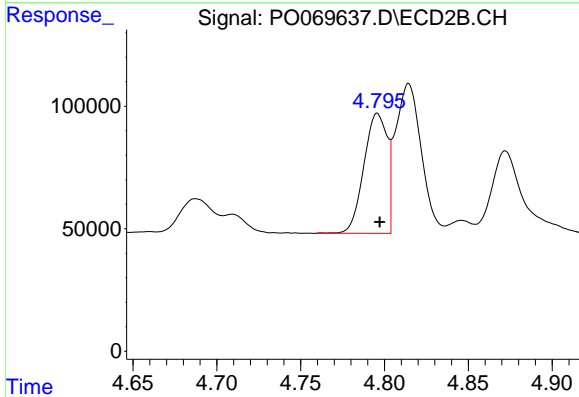
#20 AR-1242-5  
 R.T.: 5.653 min  
 Delta R.T.: 0.000 min  
 Response: 317642  
 Conc: 250.61 ng/ml



#21 AR-1248-1

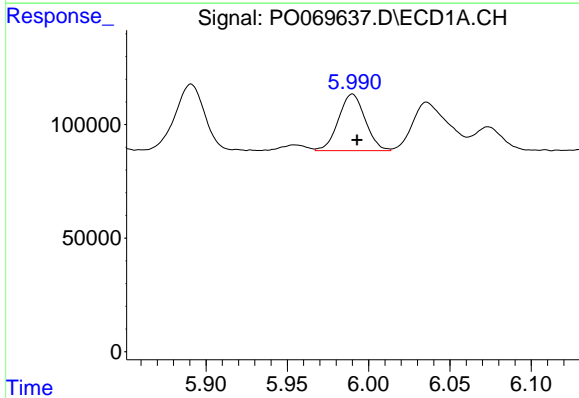
R.T.: 5.699 min  
 Delta R.T.: -0.003 min  
 Response: 520555  
 Conc: 533.05 ng/ml

Instrument :  
 ECD\_S  
 ClientSampleId :



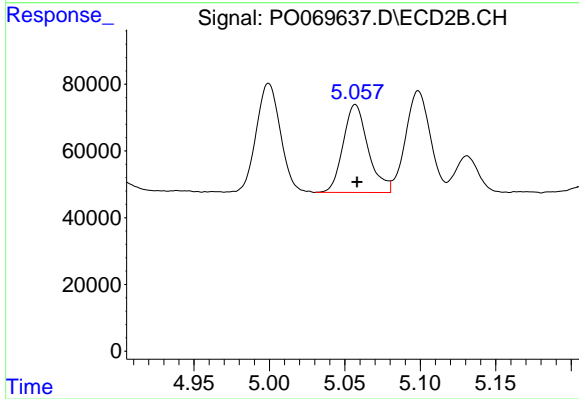
#21 AR-1248-1

R.T.: 4.796 min  
 Delta R.T.: -0.001 min  
 Response: 473205  
 Conc: 483.53 ng/ml



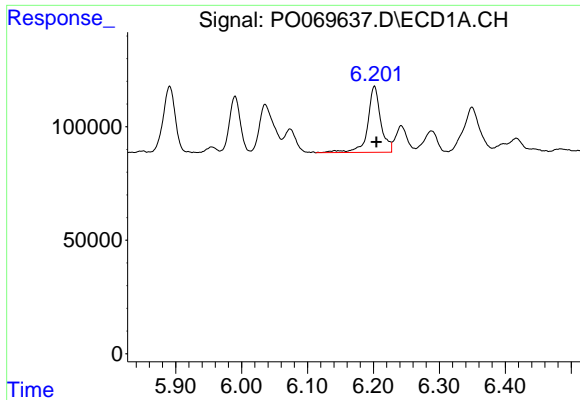
#22 AR-1248-2

R.T.: 5.990 min  
 Delta R.T.: -0.003 min  
 Response: 284103  
 Conc: 223.14 ng/ml



#22 AR-1248-2

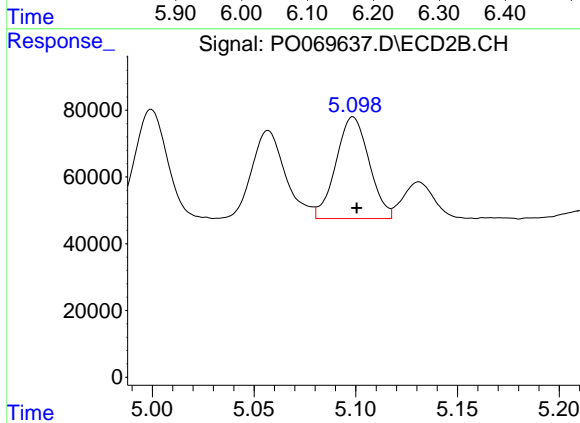
R.T.: 5.057 min  
 Delta R.T.: -0.001 min  
 Response: 303975  
 Conc: 223.28 ng/ml



#23 AR-1248-3

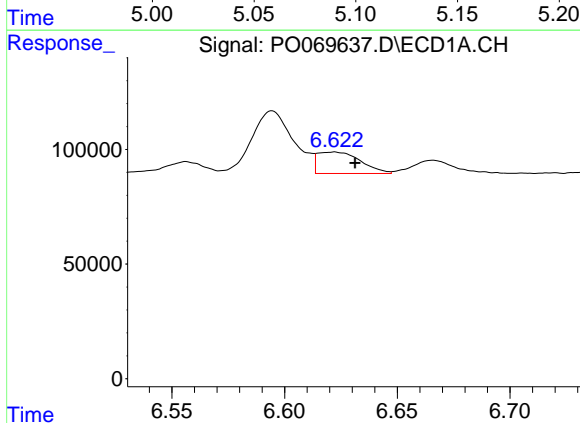
R.T.: 6.202 min  
 Delta R.T.: -0.003 min  
 Response: 402751  
 Conc: 254.83 ng/ml

Instrument :  
 ECD\_S  
 ClientSampleId :



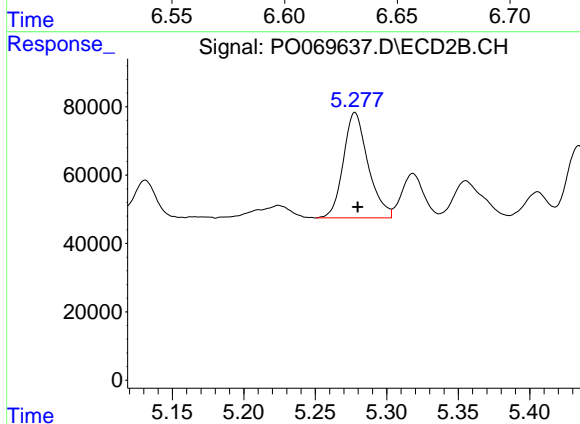
#23 AR-1248-3

R.T.: 5.099 min  
 Delta R.T.: -0.002 min  
 Response: 345801  
 Conc: 273.81 ng/ml



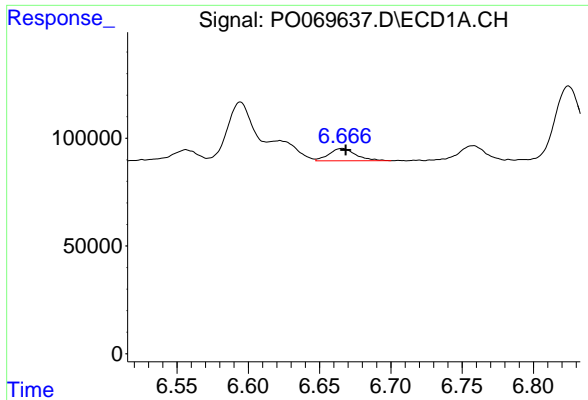
#24 AR-1248-4

R.T.: 6.622 min  
 Delta R.T.: -0.009 min  
 Response: 123857  
 Conc: 61.04 ng/ml



#24 AR-1248-4

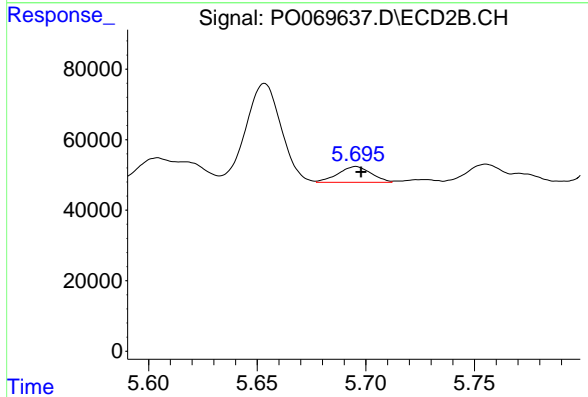
R.T.: 5.278 min  
 Delta R.T.: -0.002 min  
 Response: 371311  
 Conc: 228.59 ng/ml



#25 AR-1248-5

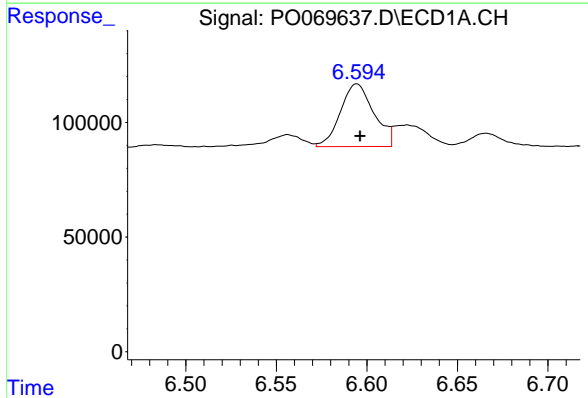
R.T.: 6.666 min  
 Delta R.T.: -0.003 min  
 Response: 74353  
 Conc: 38.74 ng/ml

Instrument :  
 ECD\_S  
 ClientSampleId :



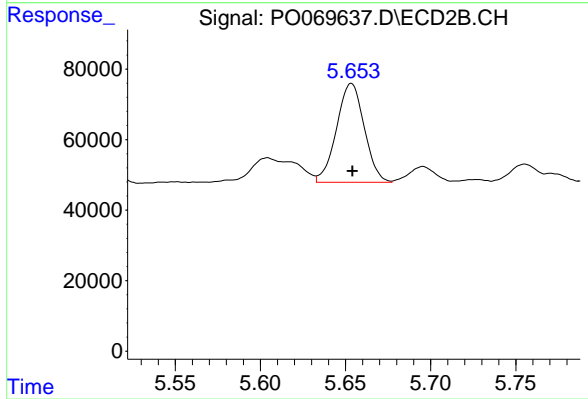
#25 AR-1248-5

R.T.: 5.696 min  
 Delta R.T.: -0.002 min  
 Response: 47781  
 Conc: 28.96 ng/ml



#26 AR-1254-1

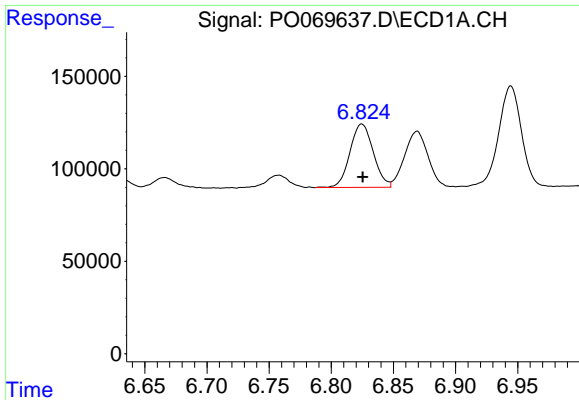
R.T.: 6.594 min  
 Delta R.T.: -0.002 min  
 Response: 352525  
 Conc: 177.10 ng/ml



#26 AR-1254-1

R.T.: 5.653 min  
 Delta R.T.: 0.000 min  
 Response: 317642  
 Conc: 122.02 ng/ml

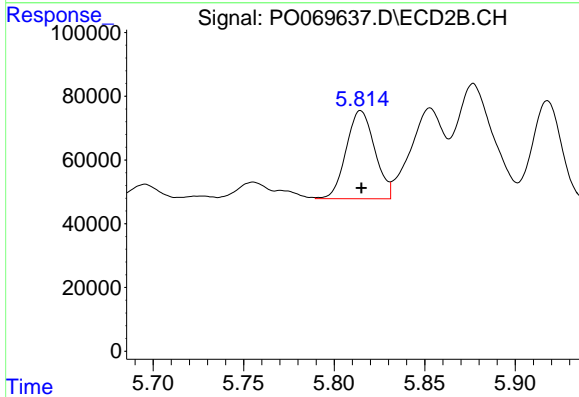




#27 AR-1254-2

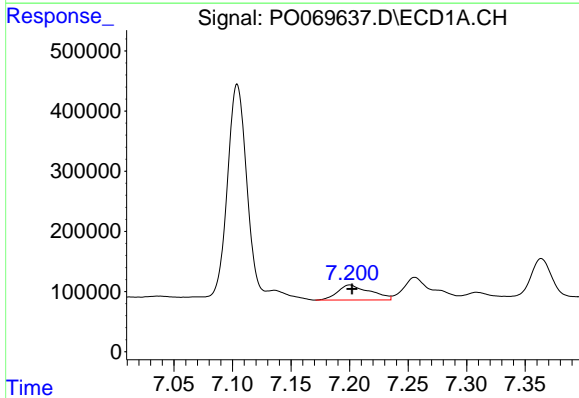
R.T.: 6.825 min  
 Delta R.T.: 0.000 min  
 Response: 448821  
 Conc: 139.81 ng/ml

Instrument :  
 ECD\_S  
 ClientSampleId :



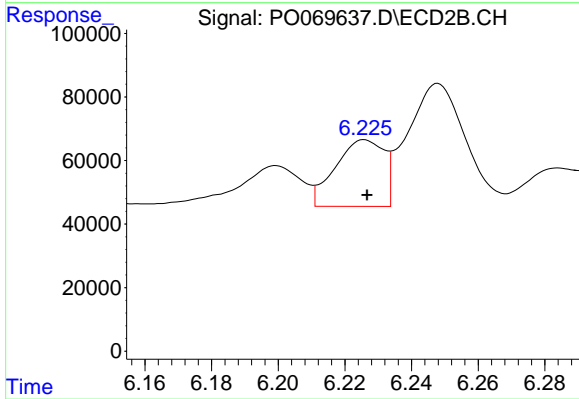
#27 AR-1254-2

R.T.: 5.815 min  
 Delta R.T.: 0.000 min  
 Response: 303305  
 Conc: 131.38 ng/ml



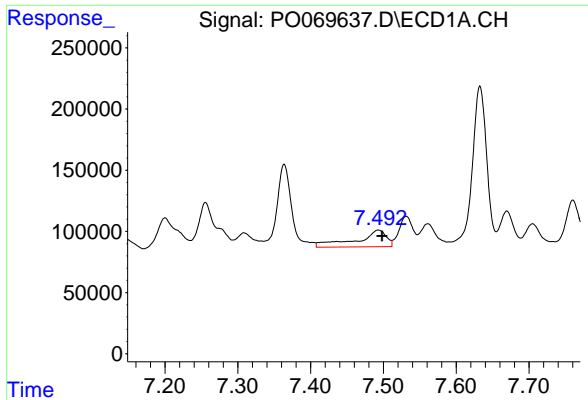
#28 AR-1254-3

R.T.: 7.200 min  
 Delta R.T.: -0.002 min  
 Response: 483157  
 Conc: 137.57 ng/ml



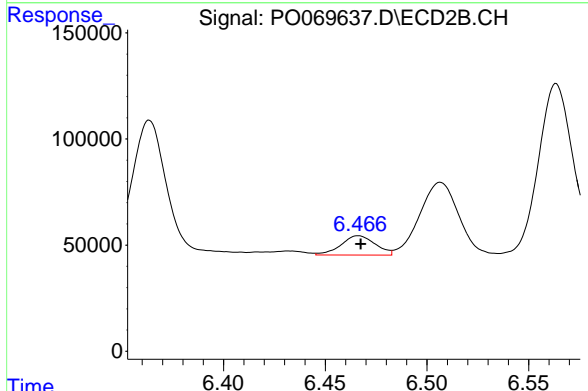
#28 AR-1254-3

R.T.: 6.226 min  
 Delta R.T.: 0.000 min  
 Response: 212336  
 Conc: 56.54 ng/ml

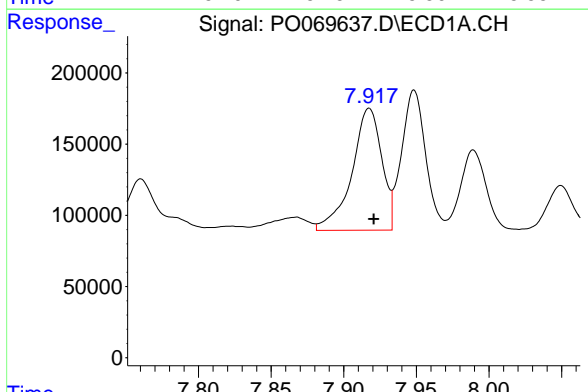


#29 AR-1254-4  
 R.T.: 7.493 min  
 Delta R.T.: -0.005 min  
 Response: 394601  
 Conc: 131.85 ng/ml

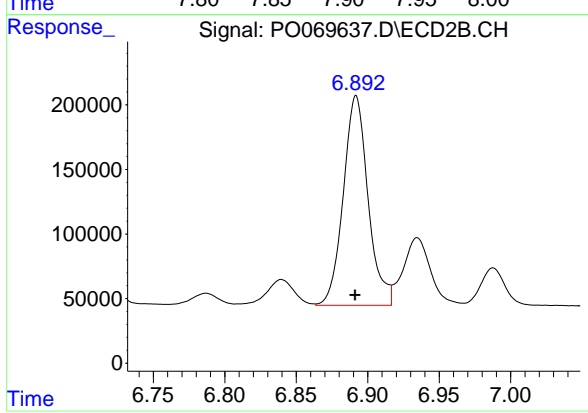
Instrument :  
 ECD\_S  
 ClientSampled :



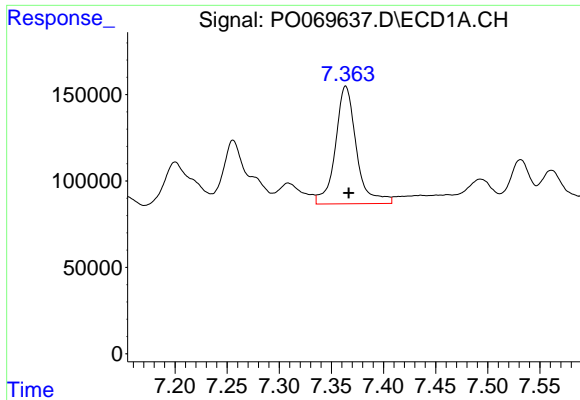
#29 AR-1254-4  
 R.T.: 6.466 min  
 Delta R.T.: -0.001 min  
 Response: 107404  
 Conc: 42.50 ng/ml



#30 AR-1254-5  
 R.T.: 7.918 min  
 Delta R.T.: -0.003 min  
 Response: 1228307  
 Conc: 408.24 ng/ml



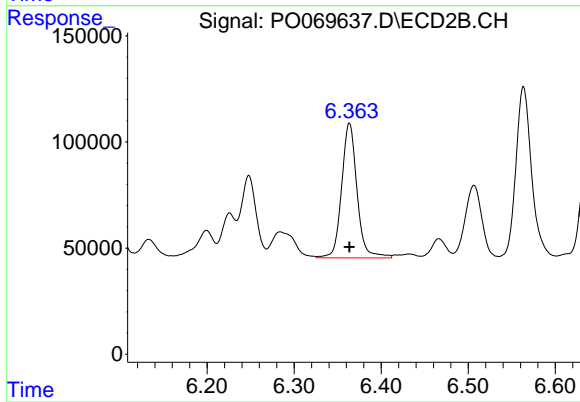
#30 AR-1254-5  
 R.T.: 6.892 min  
 Delta R.T.: 0.000 min  
 Response: 1958658  
 Conc: 545.75 ng/ml



#31 AR-1260-1

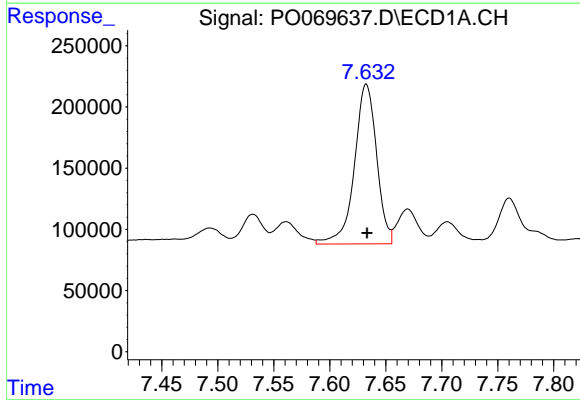
R.T.: 7.364 min  
 Delta R.T.: -0.003 min  
 Response: 956818  
 Conc: 363.89 ng/ml

Instrument :  
 ECD\_S  
 ClientSampleId :



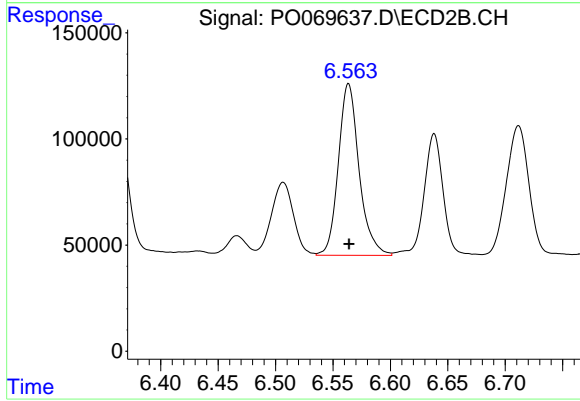
#31 AR-1260-1

R.T.: 6.364 min  
 Delta R.T.: 0.000 min  
 Response: 779773  
 Conc: 295.64 ng/ml



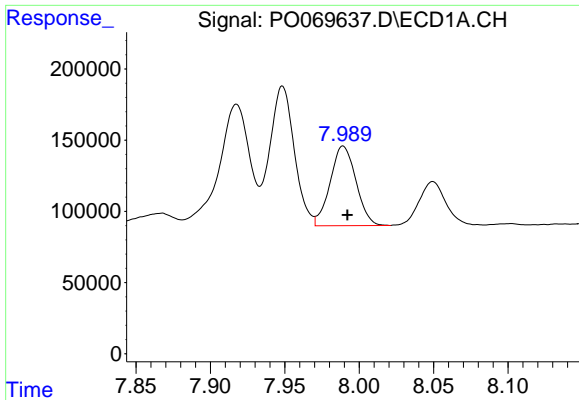
#32 AR-1260-2

R.T.: 7.633 min  
 Delta R.T.: 0.000 min  
 Response: 1803812  
 Conc: 508.49 ng/ml



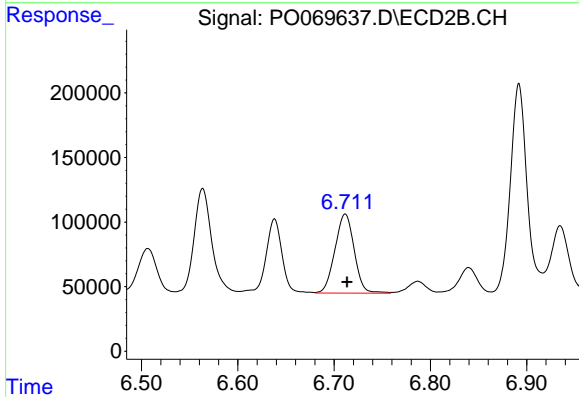
#32 AR-1260-2

R.T.: 6.564 min  
 Delta R.T.: 0.000 min  
 Response: 1019121  
 Conc: 311.36 ng/ml

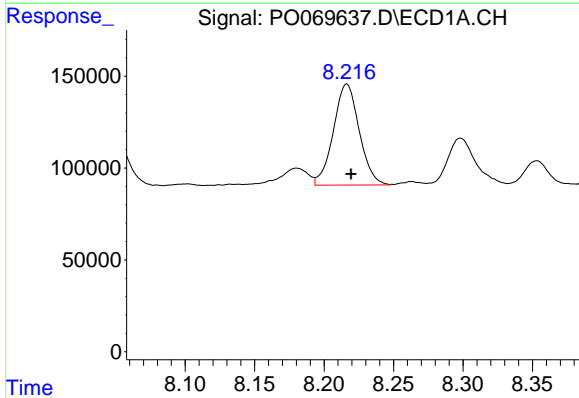


#33 AR-1260-3  
 R.T.: 7.989 min  
 Delta R.T.: -0.003 min  
 Response: 676034  
 Conc: 233.84 ng/ml

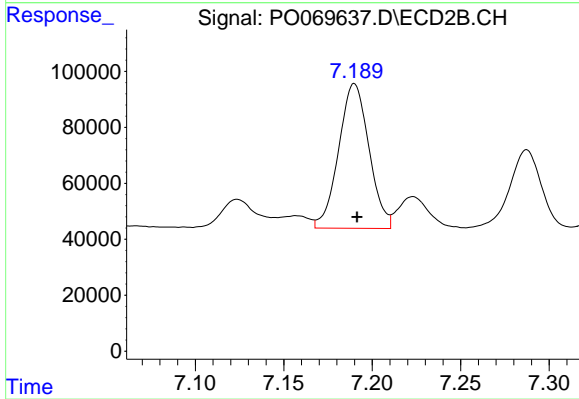
Instrument :  
 ECD\_S  
 ClientSampleId :



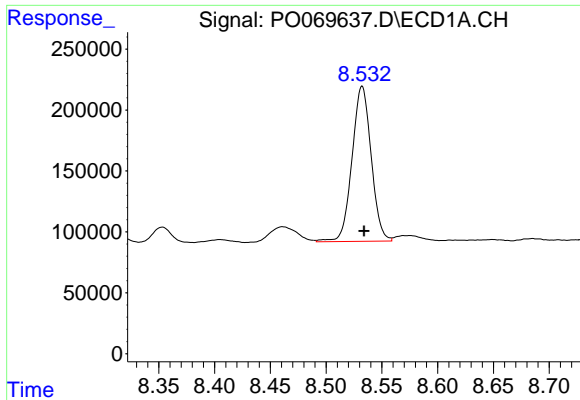
#33 AR-1260-3  
 R.T.: 6.712 min  
 Delta R.T.: -0.002 min  
 Response: 850648  
 Conc: 279.39 ng/ml



#34 AR-1260-4  
 R.T.: 8.216 min  
 Delta R.T.: -0.003 min  
 Response: 712802  
 Conc: 240.65 ng/ml



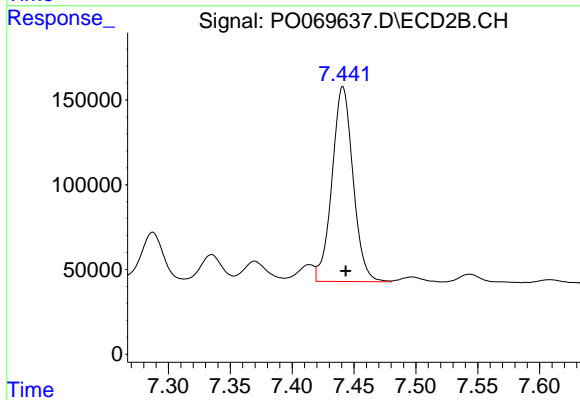
#34 AR-1260-4  
 R.T.: 7.190 min  
 Delta R.T.: -0.002 min  
 Response: 617125  
 Conc: 227.99 ng/ml



#35 AR-1260-5

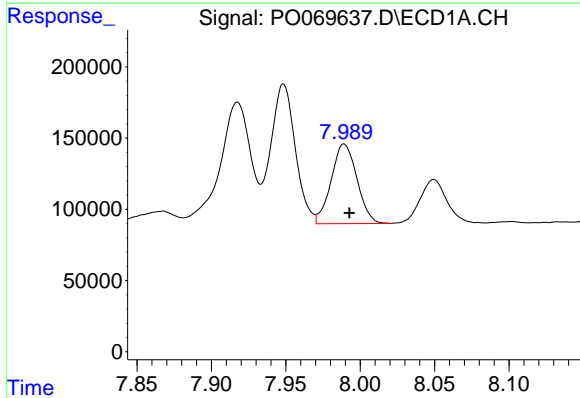
R.T.: 8.532 min  
Delta R.T.: -0.002 min  
Response: 1523406  
Conc: 225.14 ng/ml

Instrument :  
ECD\_S  
ClientSampled :



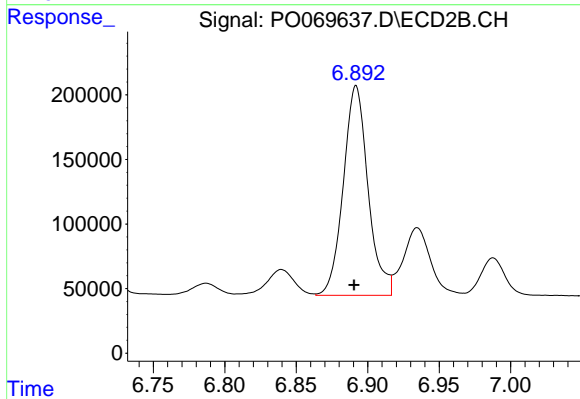
#35 AR-1260-5

R.T.: 7.441 min  
Delta R.T.: -0.002 min  
Response: 1360350  
Conc: 212.27 ng/ml



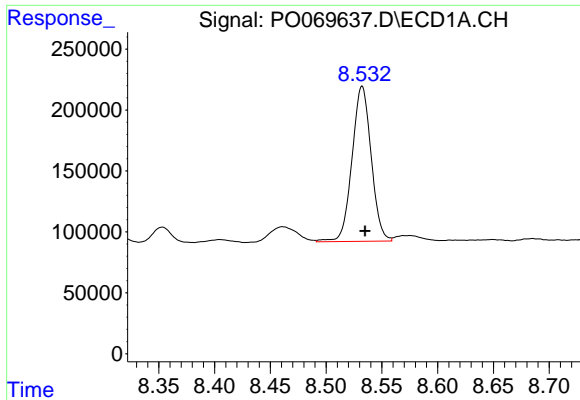
#36 AR-1262-1

R.T.: 7.989 min  
Delta R.T.: -0.004 min  
Response: 676034  
Conc: 169.88 ng/ml



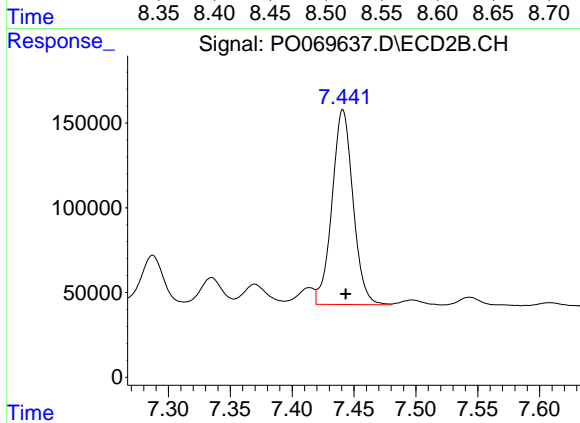
#36 AR-1262-1

R.T.: 6.892 min  
Delta R.T.: 0.001 min  
Response: 1958658  
Conc: 1014.32 ng/ml

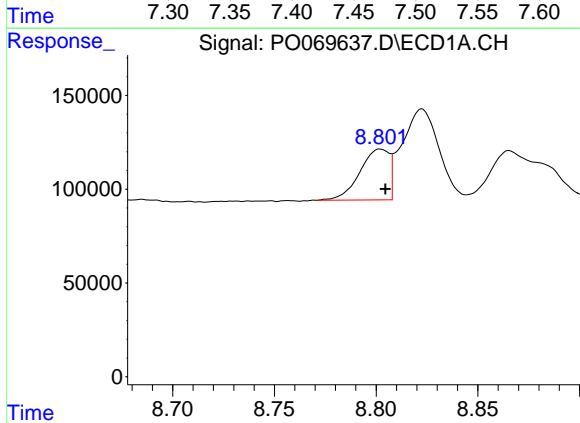


#37 AR-1262-2  
 R.T.: 8.532 min  
 Delta R.T.: -0.002 min  
 Response: 1523406  
 Conc: 211.05 ng/ml

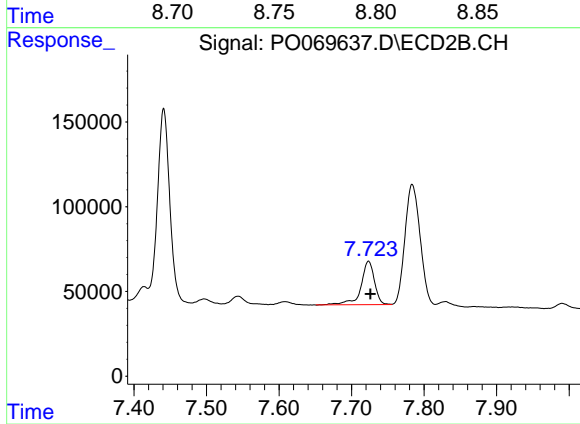
Instrument :  
 ECD\_S  
 ClientSampleId :



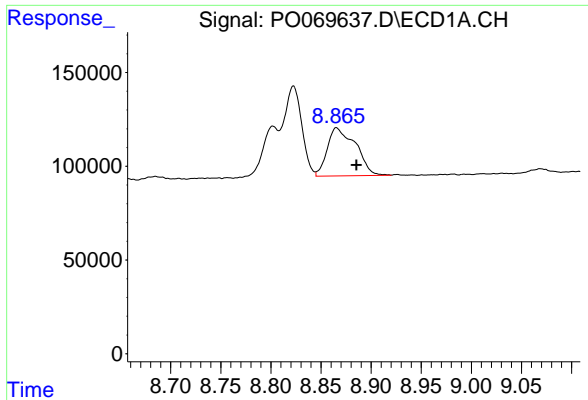
#37 AR-1262-2  
 R.T.: 7.441 min  
 Delta R.T.: -0.002 min  
 Response: 1360350  
 Conc: 208.35 ng/ml



#38 AR-1262-3  
 R.T.: 8.802 min  
 Delta R.T.: -0.002 min  
 Response: 272212  
 Conc: 56.85 ng/ml

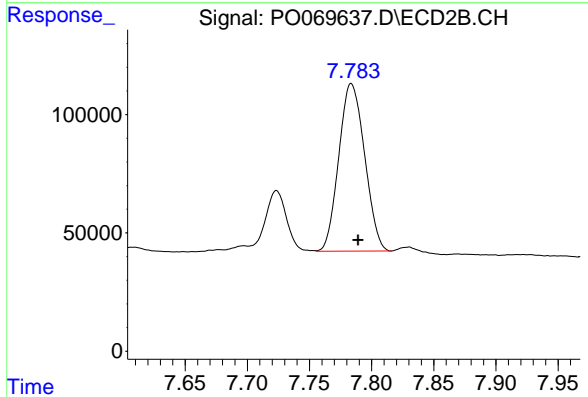


#38 AR-1262-3  
 R.T.: 7.723 min  
 Delta R.T.: -0.003 min  
 Response: 332094  
 Conc: 123.22 ng/ml

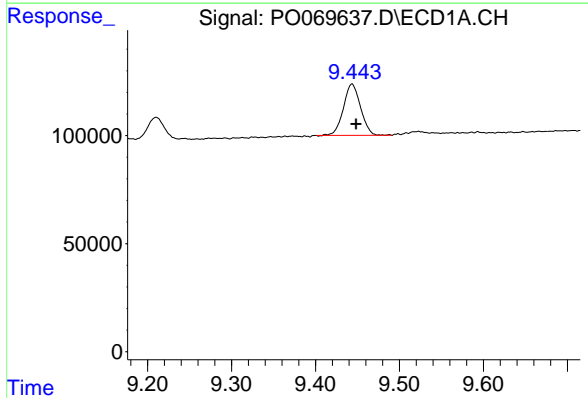


#39 AR-1262-4  
 R.T.: 8.866 min  
 Delta R.T.: -0.020 min  
 Response: 504982  
 Conc: 260.51 ng/ml

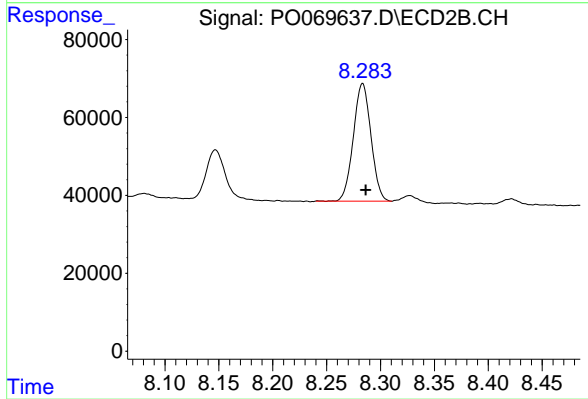
Instrument :  
 ECD\_S  
 ClientSampleId :



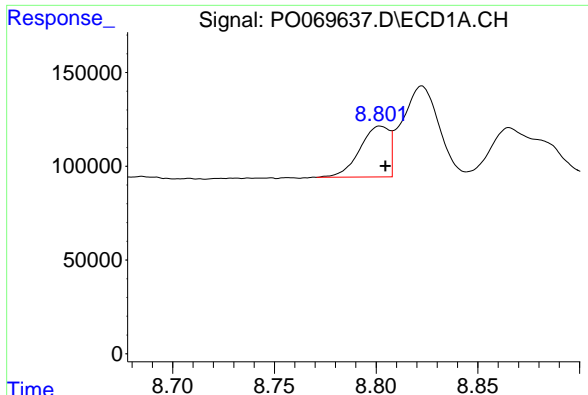
#39 AR-1262-4  
 R.T.: 7.784 min  
 Delta R.T.: -0.006 min  
 Response: 1022827  
 Conc: 205.42 ng/ml



#40 AR-1262-5  
 R.T.: 9.444 min  
 Delta R.T.: -0.005 min  
 Response: 336642  
 Conc: 129.07 ng/ml



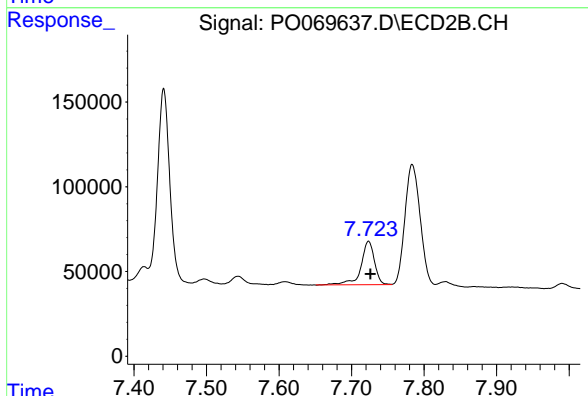
#40 AR-1262-5  
 R.T.: 8.283 min  
 Delta R.T.: -0.003 min  
 Response: 343846  
 Conc: 138.37 ng/ml



#41 AR-1268-1

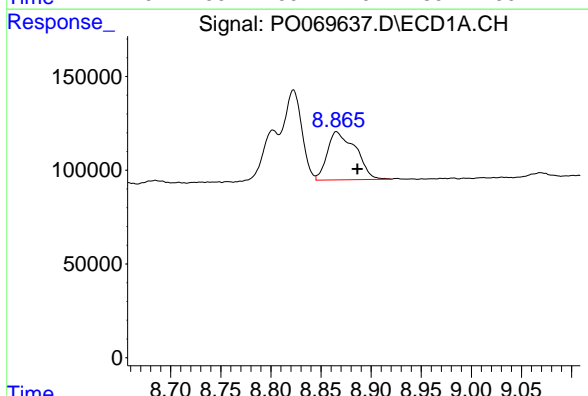
R.T.: 8.802 min  
 Delta R.T.: -0.002 min  
 Response: 272212  
 Conc: 29.70 ng/ml

Instrument :  
 ECD\_S  
 ClientSampled :



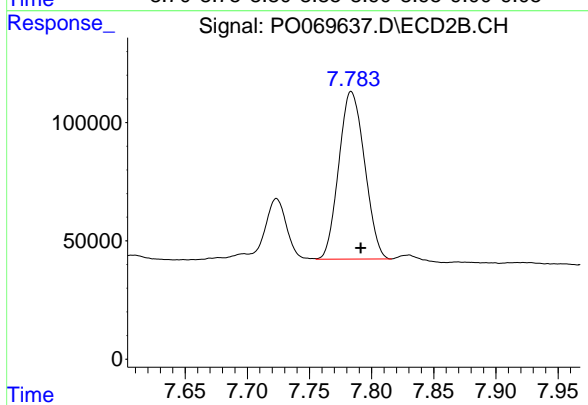
#41 AR-1268-1

R.T.: 7.723 min  
 Delta R.T.: -0.003 min  
 Response: 332094  
 Conc: 42.42 ng/ml



#42 AR-1268-2

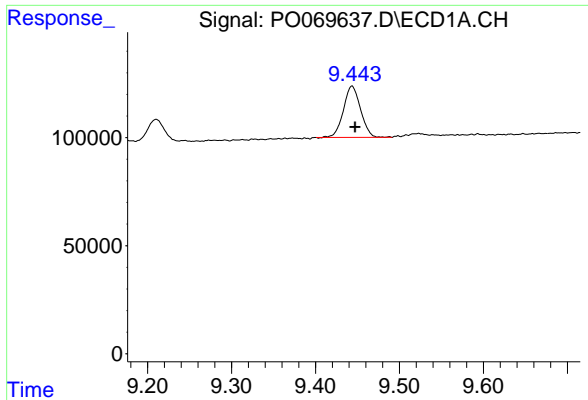
R.T.: 8.866 min  
 Delta R.T.: -0.021 min  
 Response: 504982  
 Conc: 60.92 ng/ml



#42 AR-1268-2

R.T.: 7.784 min  
 Delta R.T.: -0.008 min  
 Response: 1022827  
 Conc: 143.19 ng/ml

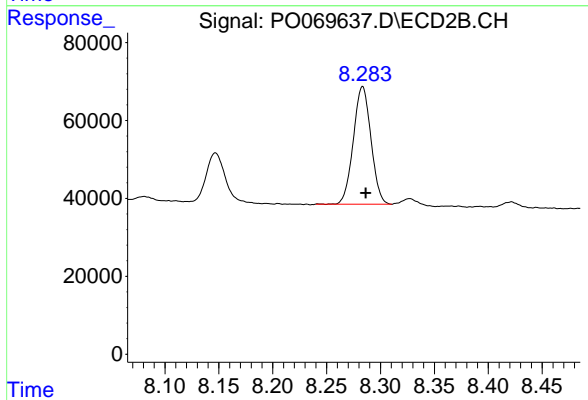




#44 AR-1268-4

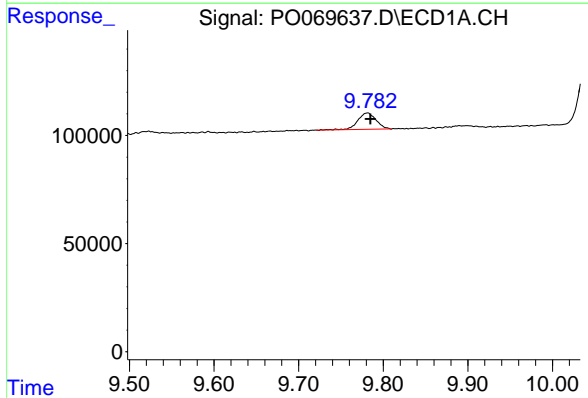
R.T.: 9.444 min  
 Delta R.T.: -0.004 min  
 Response: 336642  
 Conc: 111.07 ng/ml

Instrument :  
 ECD\_S  
 ClientSampleId :



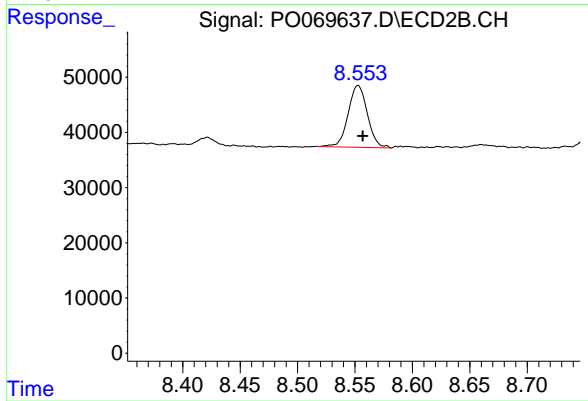
#44 AR-1268-4

R.T.: 8.283 min  
 Delta R.T.: -0.003 min  
 Response: 343846  
 Conc: 118.89 ng/ml



#45 AR-1268-5

R.T.: 9.781 min  
 Delta R.T.: -0.003 min  
 Response: 112851  
 Conc: 5.08 ng/ml



#45 AR-1268-5

R.T.: 8.553 min  
 Delta R.T.: -0.004 min  
 Response: 130843  
 Conc: 6.79 ng/ml