

Data Path : Z:\pestpcbsrv\HPCHEM1\ECD_0\Data\P0071420\
 Data File : P0069657.D
 Signal(s) : Signal #1: ECD1A.CH Signal #2: ECD2B.CH
 Acq On : 15 Jul 2020 4:11
 Operator : DD\AJ
 Sample : L3294-23
 Misc :
 ALS Vial : 39 Sample Multiplier: 1

Instrument :
 ECD_S
 ClientSampled :

Integration File signal 1: autoint1.e
 Integration File signal 2: autoint2.e
 Quant Time: Jul 15 06:02:07 2020
 Quant Method : Z:\pestpcbsrv\HPCHEM1\ECD_0\methods\P0070820.M
 Quant Title : GC EXTRACTABLES
 QLast Update : Wed Jul 08 16:12:41 2020
 Response via : Initial Calibration
 Integrator: ChemStation 6890 Scale Mode: Small noise peaks clipped

Volume Inj. : 2 µl
 Signal #1 Phase : ZB-MR1 Signal #2 Phase: ZB-MR2
 Signal #1 Info : 30Mx0.32mmx 0.50µ Signal #2 Info : 30M x 0.32mm x 0.25µm

Compound	RT#1	RT#2	Resp#1	Resp#2	ng/ml	ng/ml
System Monitoring Compounds						
1) SA Tetrachlo...	4.391	3.564	871239	910325	23.335	22.875
2) SA Decachlor...	10.048	8.770	2067902	1928431	34.370	33.979
Target Compounds						
6) L1 AR-1016-4	0.000	5.056	0	390618	N.D.	357.699 #
7) L1 AR-1016-5	6.200	5.277	158833	137754	120.547	100.145
14) L3 AR-1232-4	0.000	5.097	0	101341	N.D.	231.144 #
15) L3 AR-1232-5	5.989	5.277	395894	137754	1247.488	263.322 #
19) L4 AR-1242-4	0.000	5.097	0	101341	N.D.	112.020 #
20) L4 AR-1242-5	6.665	5.653	404340	1718415	340.603	1355.802 #
22) L5 AR-1248-2	5.989	5.056	395894	390618	310.937	286.928
23) L5 AR-1248-3	6.200	5.097	158833	101341	100.497	80.243
24) L5 AR-1248-4	6.626	5.277	608509	137754	299.895	84.806 #
25) L5 AR-1248-5	6.665	5.695	404340	102835	210.676	62.317 #
26) L6 AR-1254-1	6.593	5.653	1628643	1718415	818.174	660.144
27) L6 AR-1254-2	6.822	5.815	4233200	3220044	1318.655	1394.819
28) L6 AR-1254-3	7.199	6.226	6826277	6640296	1943.651	1768.149
29) L6 AR-1254-4	7.494	6.466	6785096	4934725	2267.085	1952.697
30) L6 AR-1254-5	7.917	6.890	13153192	13984738	4371.583	3896.609
31) L7 AR-1260-1	7.362	6.363	4091817	4005984	1556.172	1518.815
32) L7 AR-1260-2	7.629	6.563	7168270	5514503	2020.709	1684.766
33) L7 AR-1260-3	7.985	6.708	2042478	3951018	706.499	1297.696 #
34) L7 AR-1260-4	8.209	7.189	5125208	1096410	1730.357	405.059 #
35) L7 AR-1260-5	8.531	7.441	2521548	2762606	372.658	431.077
36) L8 AR-1262-1	7.985	6.890	2042478	13984738	513.255	7242.232 #
37) L8 AR-1262-2	8.531	7.441	2521548	2762606	349.336	423.112
38) L8 AR-1262-3	8.822f	7.723	2051999	349874	428.549	129.822 #
39) L8 AR-1262-4	8.863f	7.782	752075	2474378	387.985	496.947 #
40) L8 AR-1262-5	9.443	8.283	308742	325766	118.377	131.099
41) L9 AR-1268-1	8.822f	7.723	2051999	349874	223.862	44.695 #
42) L9 AR-1268-2	8.863f	7.782	752075	2474378	90.736	346.406 #
43) L9 AR-1268-3	9.067	7.990	262781	290938	37.136	48.723 #
44) L9 AR-1268-4	9.443	8.283	308742	325766	101.864	112.642
45) L9 AR-1268-5	9.780	8.553	613177	614002	27.602	31.843

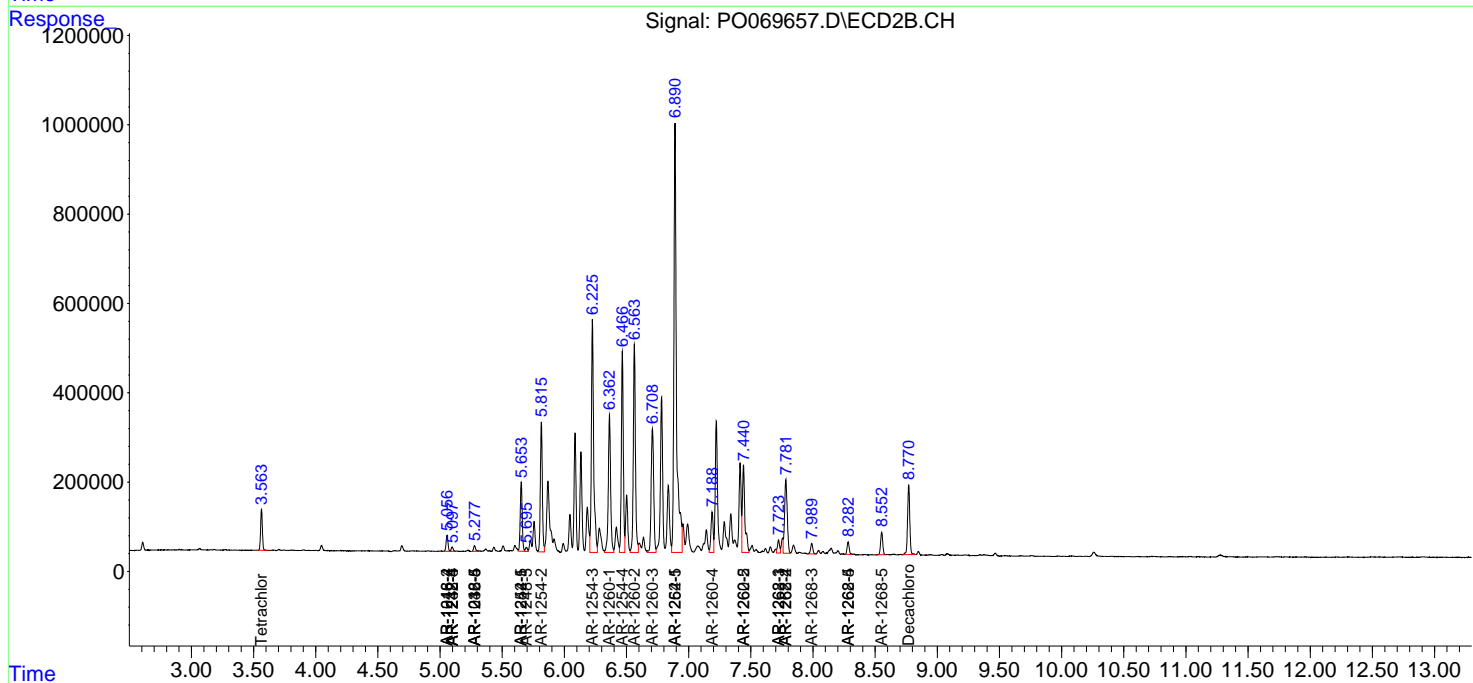
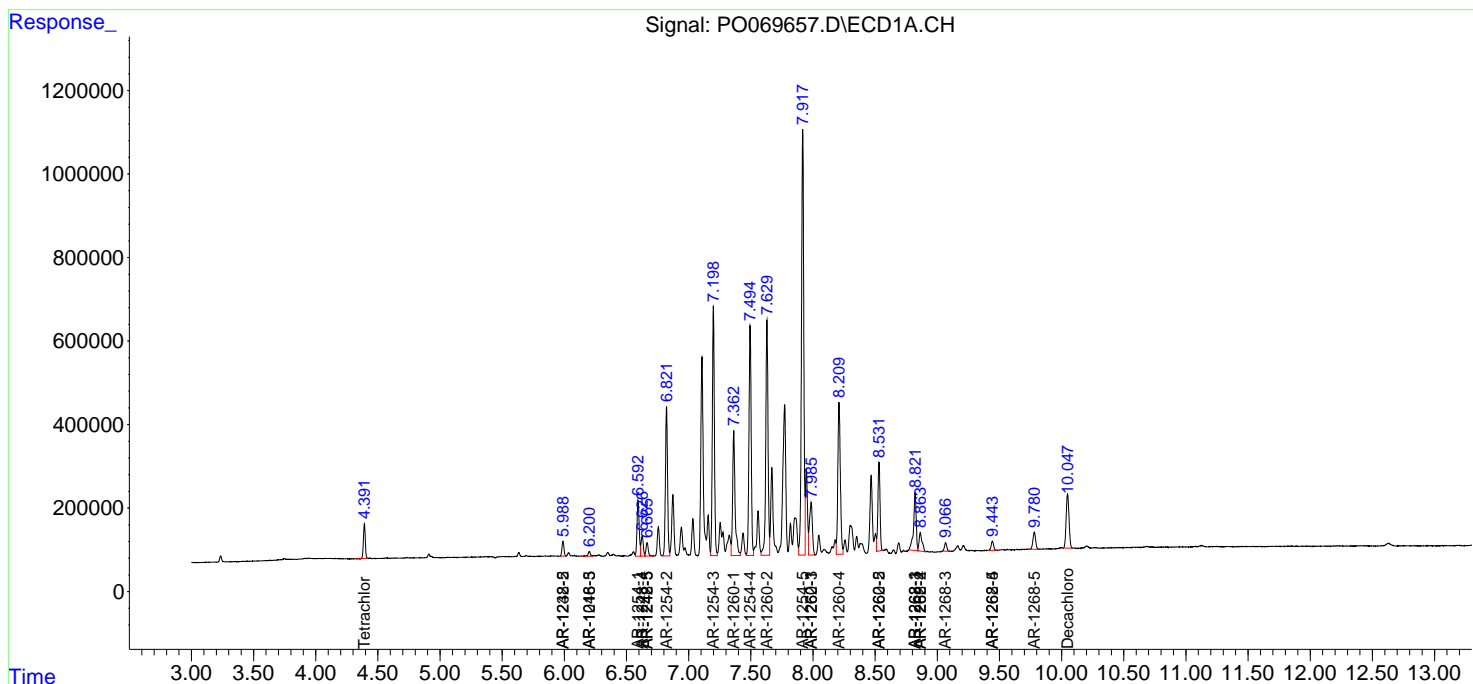
(f)=RT Delta > 1/2 Window (#)=Amounts differ by > 25% (m)=manual int.

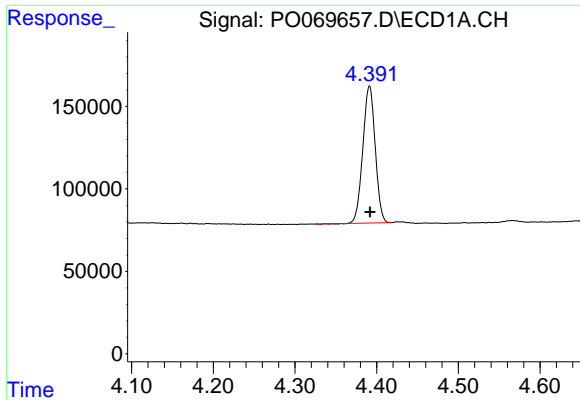
Data Path : Z:\pestpcbsrv\HPCHEM1\ECD_0\Data\P0071420\
 Data File : P0069657.D
 Signal(s) : Signal #1: ECD1A.CH Signal #2: ECD2B.CH
 Acq On : 15 Jul 2020 4:11
 Operator : DD\AJ
 Sample : L3294-23
 Misc :
 ALS Vial : 39 Sample Multiplier: 1

Instrument :
 ECD_S
 ClientSampled :

Integration File signal 1: autoint1.e
 Integration File signal 2: autoint2.e
 Quant Time: Jul 15 06:02:07 2020
 Quant Method : Z:\pestpcbsrv\HPCHEM1\ECD_0\methods\P0070820.M
 Quant Title : GC EXTRACTABLES
 QLast Update : Wed Jul 08 16:12:41 2020
 Response via : Initial Calibration
 Integrator: ChemStation 6890 Scale Mode: Small noise peaks clipped

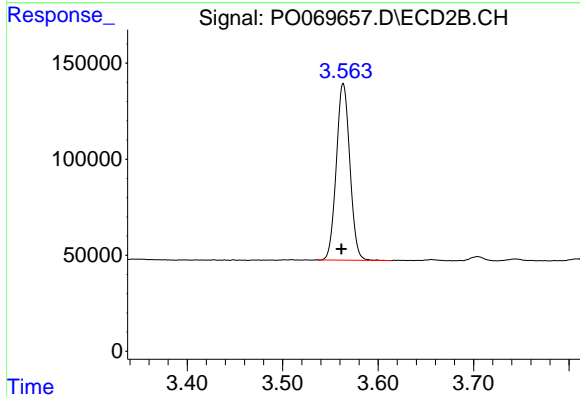
Volume Inj. : 2 µl
 Signal #1 Phase : ZB-MR1 Signal #2 Phase: ZB-MR2
 Signal #1 Info : 30Mx0.32mmx 0.50µ Signal #2 Info : 30M x 0.32mm x 0.25µm



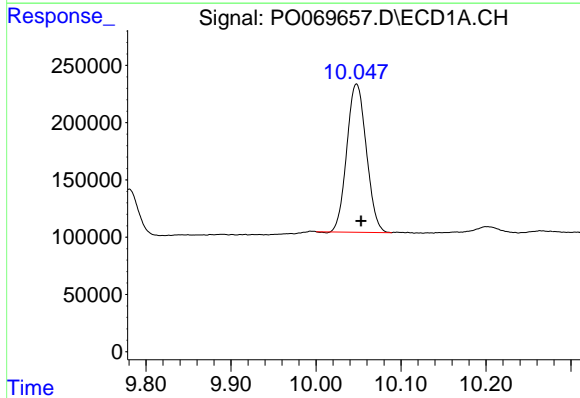


#1 Tetrachloro-m-xylene
 R.T.: 4.391 min
 Delta R.T.: 0.000 min
 Response: 871239
 Conc: 23.34 ng/ml

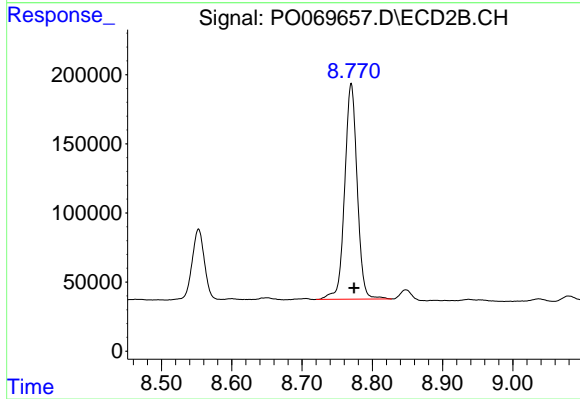
Instrument :
 ECD_S
 ClientSampled :



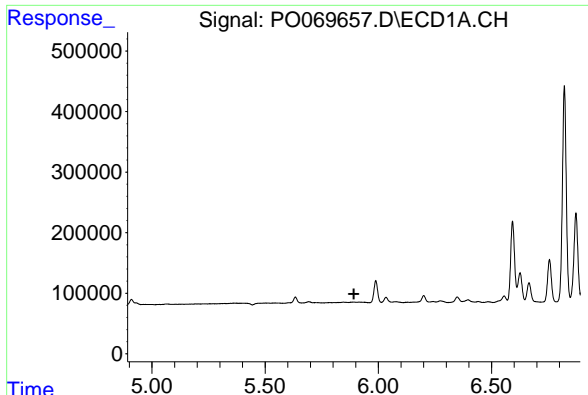
#1 Tetrachloro-m-xylene
 R.T.: 3.564 min
 Delta R.T.: 0.002 min
 Response: 910325
 Conc: 22.87 ng/ml



#2 Decachlorobiphenyl
 R.T.: 10.048 min
 Delta R.T.: -0.006 min
 Response: 2067902
 Conc: 34.37 ng/ml



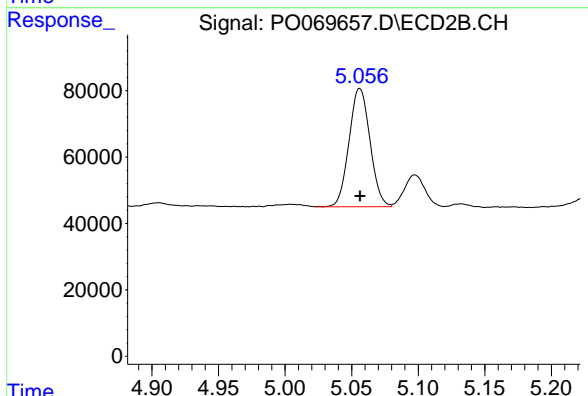
#2 Decachlorobiphenyl
 R.T.: 8.770 min
 Delta R.T.: -0.004 min
 Response: 1928431
 Conc: 33.98 ng/ml



#6 AR-1016-4

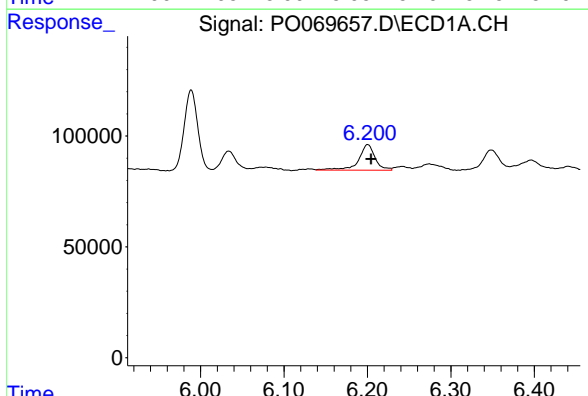
R.T.: 0.000 min
 Exp R.T.: 5.892 min
 Response: 0
 Conc: N.D.

Instrument :
 ECD_S
 ClientSampled :



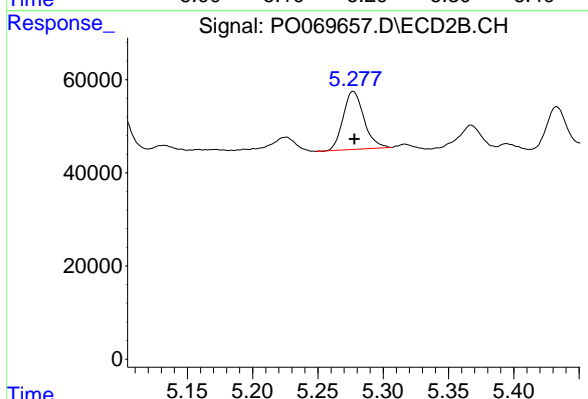
#6 AR-1016-4

R.T.: 5.056 min
 Delta R.T.: 0.000 min
 Response: 390618
 Conc: 357.70 ng/ml



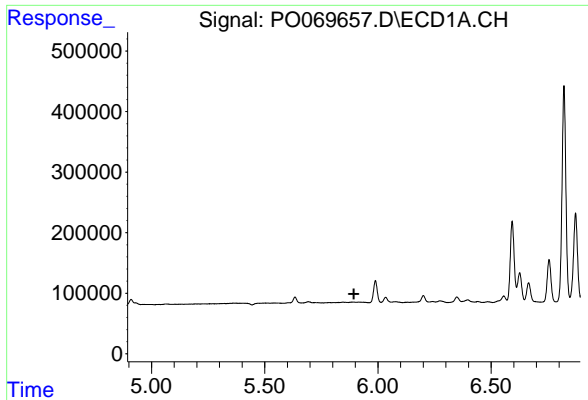
#7 AR-1016-5

R.T.: 6.200 min
 Delta R.T.: -0.004 min
 Response: 158833
 Conc: 120.55 ng/ml



#7 AR-1016-5

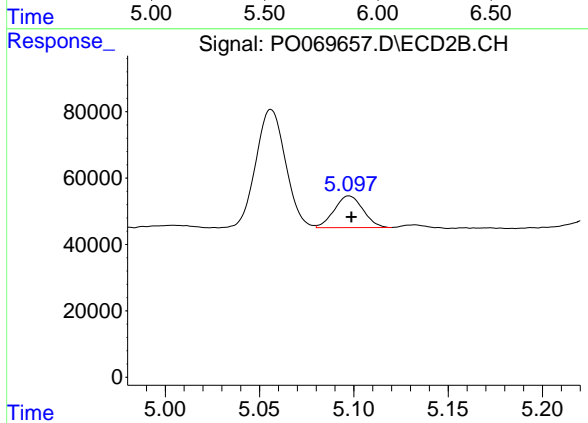
R.T.: 5.277 min
 Delta R.T.: 0.000 min
 Response: 137754
 Conc: 100.14 ng/ml



#14 AR-1232-4

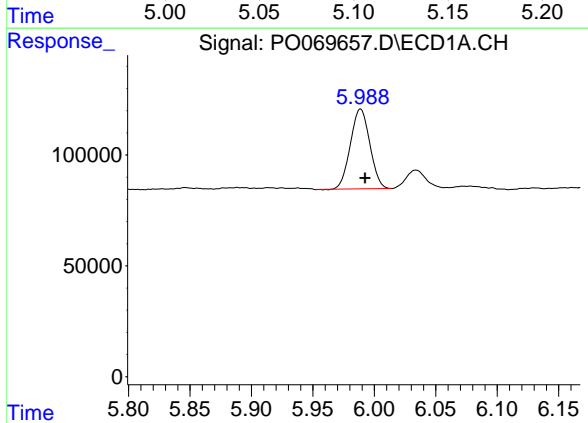
R.T.: 0.000 min
 Exp R.T.: 5.894 min
 Response: 0
 Conc: N.D.

Instrument :
 ECD_S
 ClientSampleId :



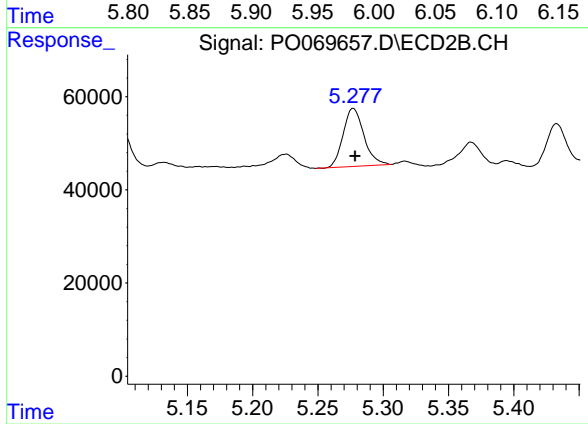
#14 AR-1232-4

R.T.: 5.097 min
 Delta R.T.: -0.001 min
 Response: 101341
 Conc: 231.14 ng/ml



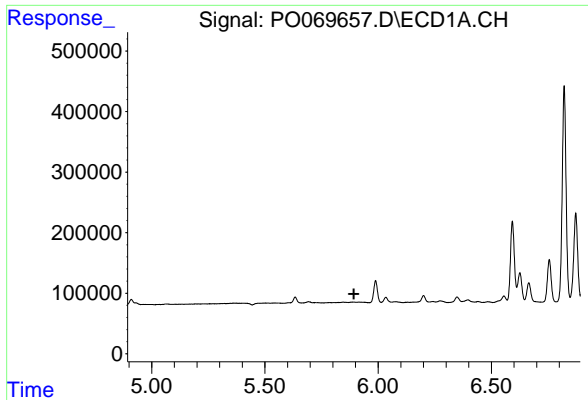
#15 AR-1232-5

R.T.: 5.989 min
 Delta R.T.: -0.004 min
 Response: 395894
 Conc: 1247.49 ng/ml



#15 AR-1232-5

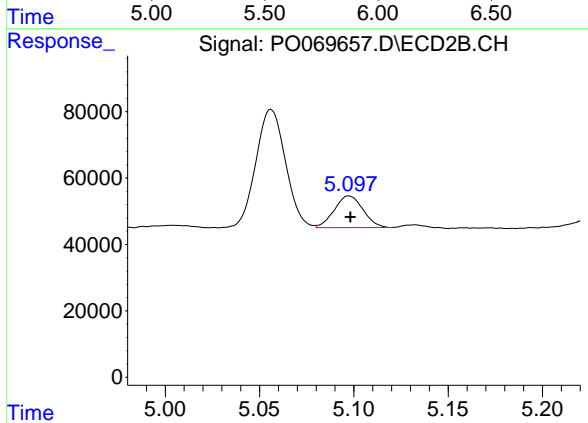
R.T.: 5.277 min
 Delta R.T.: -0.001 min
 Response: 137754
 Conc: 263.32 ng/ml



#19 AR-1242-4

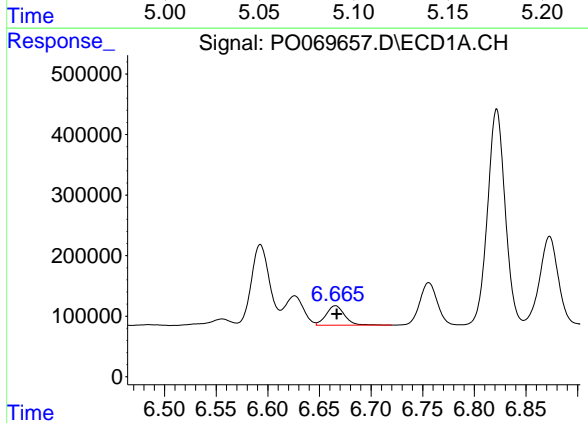
R.T.: 0.000 min
 Exp R.T.: 5.893 min
 Response: 0
 Conc: N.D.

Instrument :
 ECD_S
 ClientSampleId :



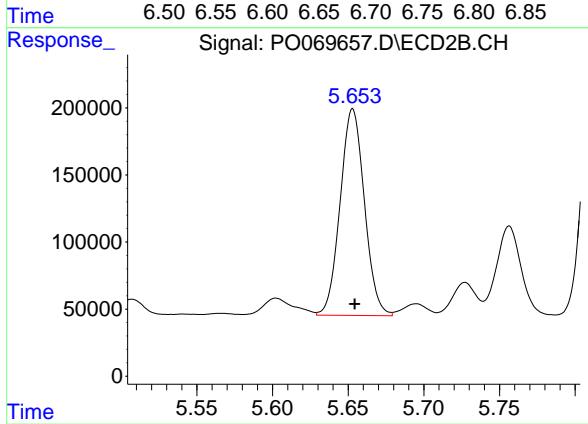
#19 AR-1242-4

R.T.: 5.097 min
 Delta R.T.: 0.000 min
 Response: 101341
 Conc: 112.02 ng/ml



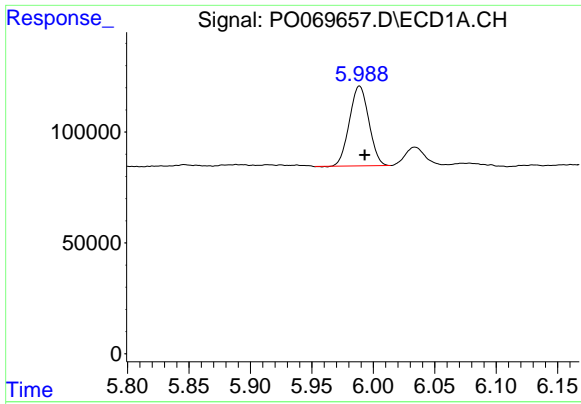
#20 AR-1242-5

R.T.: 6.665 min
 Delta R.T.: -0.001 min
 Response: 404340
 Conc: 340.60 ng/ml



#20 AR-1242-5

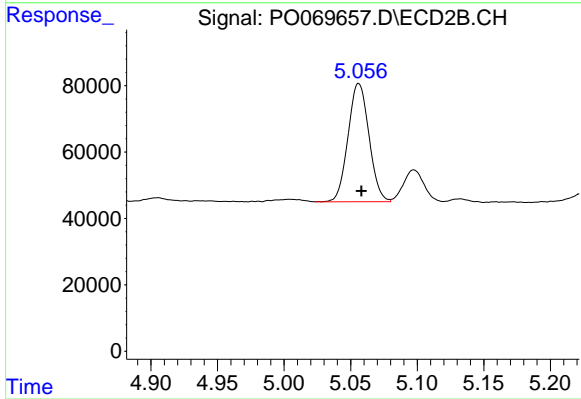
R.T.: 5.653 min
 Delta R.T.: -0.001 min
 Response: 1718415
 Conc: 1355.80 ng/ml



#22 AR-1248-2

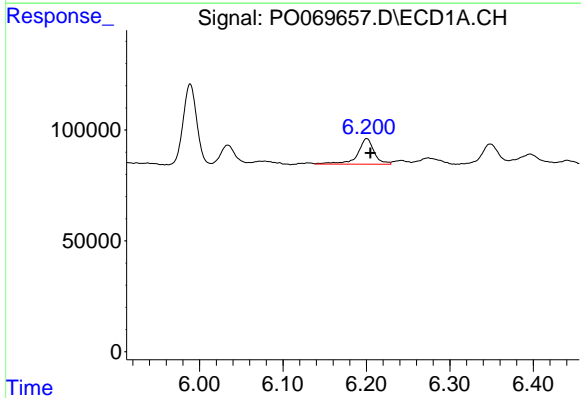
R.T.: 5.989 min
 Delta R.T.: -0.004 min
 Response: 395894
 Conc: 310.94 ng/ml

Instrument :
 ECD_S
 ClientSampleId :



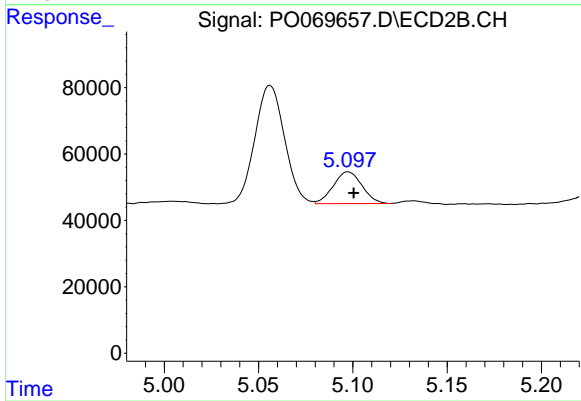
#22 AR-1248-2

R.T.: 5.056 min
 Delta R.T.: -0.002 min
 Response: 390618
 Conc: 286.93 ng/ml



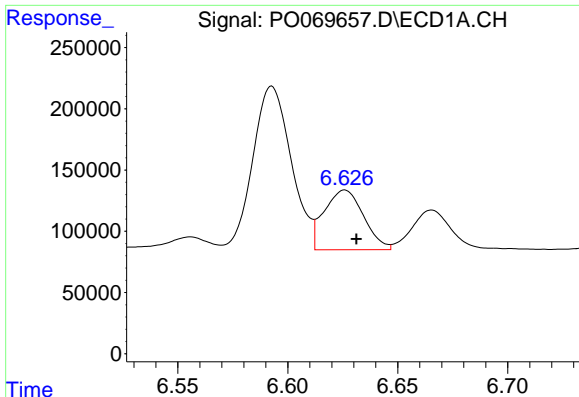
#23 AR-1248-3

R.T.: 6.200 min
 Delta R.T.: -0.004 min
 Response: 158833
 Conc: 100.50 ng/ml



#23 AR-1248-3

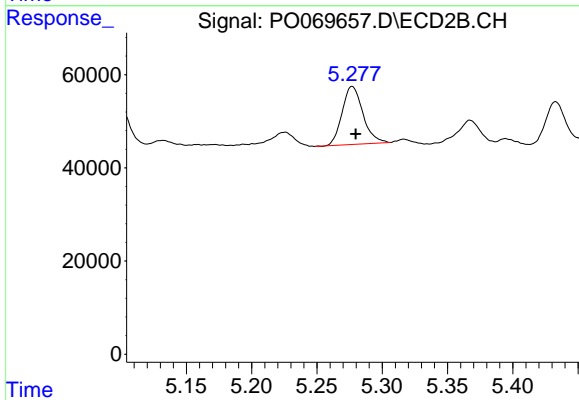
R.T.: 5.097 min
 Delta R.T.: -0.003 min
 Response: 101341
 Conc: 80.24 ng/ml



#24 AR-1248-4

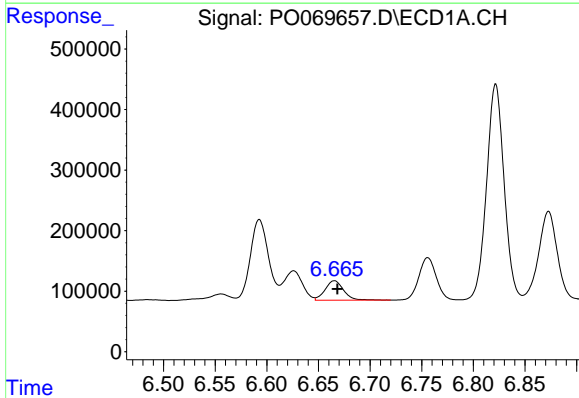
R.T.: 6.626 min
Delta R.T.: -0.005 min
Response: 608509
Conc: 299.89 ng/ml

Instrument :
ECD_S
ClientSampleId :



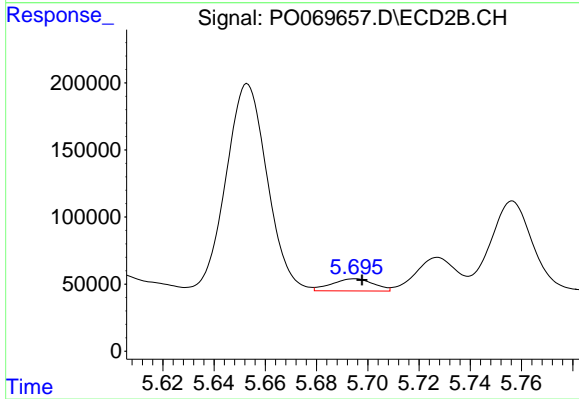
#24 AR-1248-4

R.T.: 5.277 min
Delta R.T.: -0.003 min
Response: 137754
Conc: 84.81 ng/ml



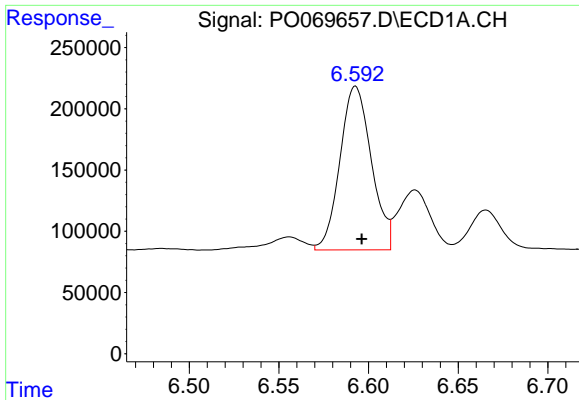
#25 AR-1248-5

R.T.: 6.665 min
Delta R.T.: -0.003 min
Response: 404340
Conc: 210.68 ng/ml



#25 AR-1248-5

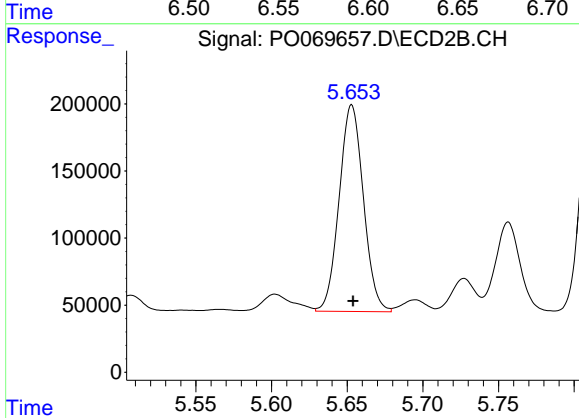
R.T.: 5.695 min
Delta R.T.: -0.003 min
Response: 102835
Conc: 62.32 ng/ml



#26 AR-1254-1

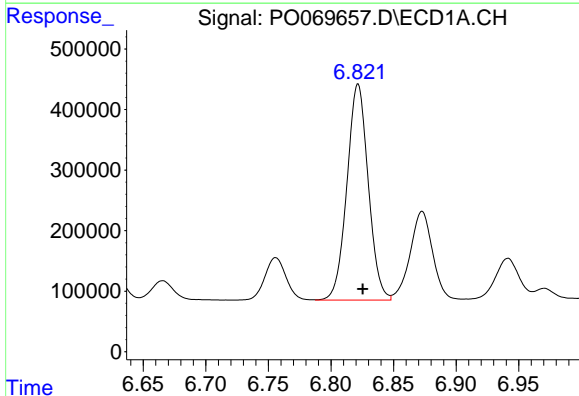
R.T.: 6.593 min
 Delta R.T.: -0.003 min
 Response: 1628643
 Conc: 818.17 ng/ml

Instrument :
 ECD_S
 ClientSampled :



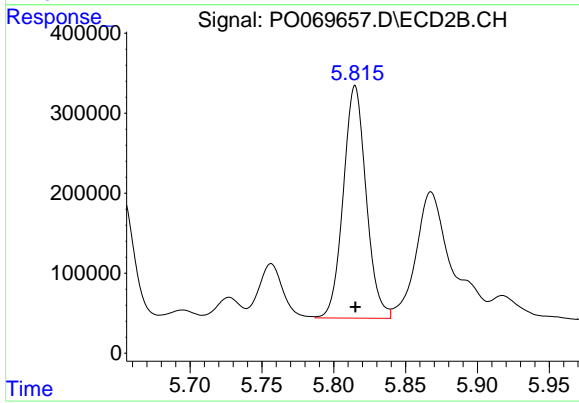
#26 AR-1254-1

R.T.: 5.653 min
 Delta R.T.: 0.000 min
 Response: 1718415
 Conc: 660.14 ng/ml



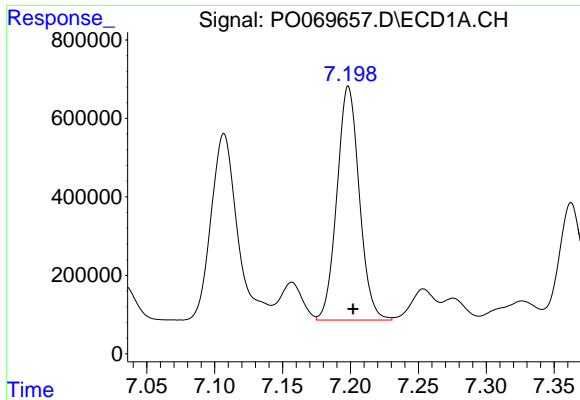
#27 AR-1254-2

R.T.: 6.822 min
 Delta R.T.: -0.004 min
 Response: 4233200
 Conc: 1318.65 ng/ml



#27 AR-1254-2

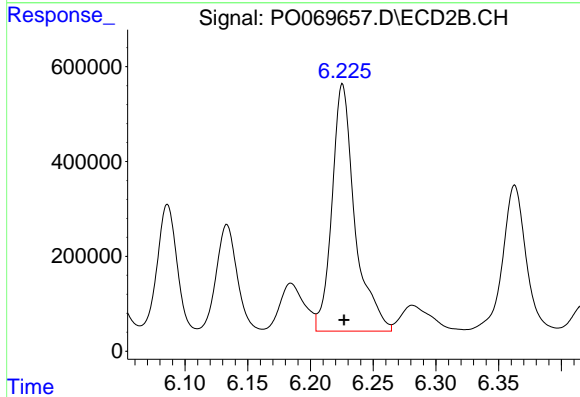
R.T.: 5.815 min
 Delta R.T.: 0.000 min
 Response: 3220044
 Conc: 1394.82 ng/ml



#28 AR-1254-3

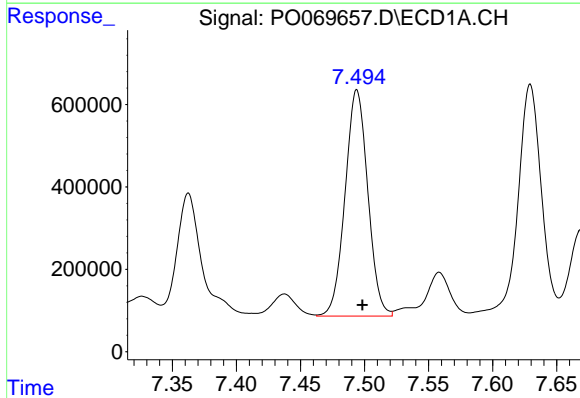
R.T.: 7.199 min
 Delta R.T.: -0.004 min
 Response: 6826277
 Conc: 1943.65 ng/ml

Instrument :
 ECD_S
 ClientSampleId :



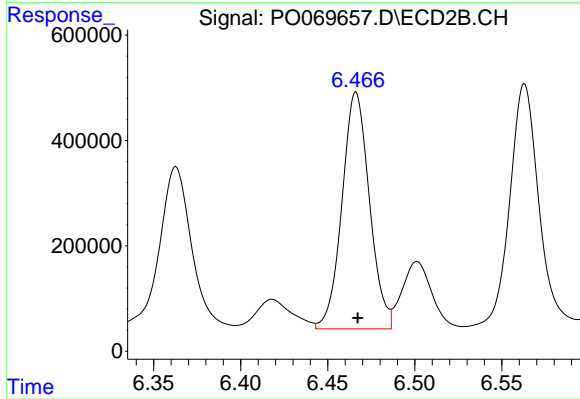
#28 AR-1254-3

R.T.: 6.226 min
 Delta R.T.: -0.001 min
 Response: 6640296
 Conc: 1768.15 ng/ml



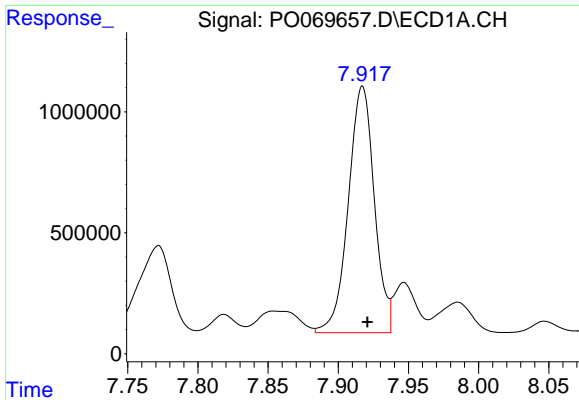
#29 AR-1254-4

R.T.: 7.494 min
 Delta R.T.: -0.004 min
 Response: 6785096
 Conc: 2267.08 ng/ml



#29 AR-1254-4

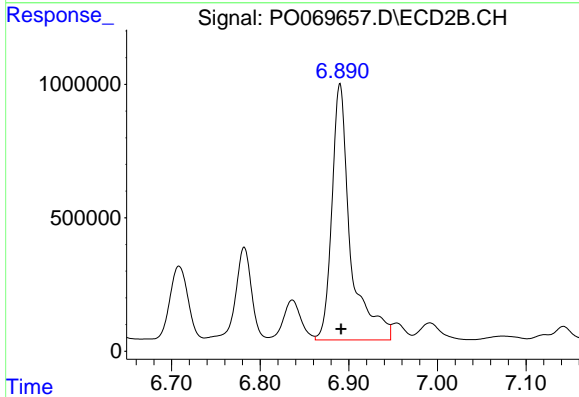
R.T.: 6.466 min
 Delta R.T.: -0.001 min
 Response: 4934725
 Conc: 1952.70 ng/ml



#30 AR-1254-5

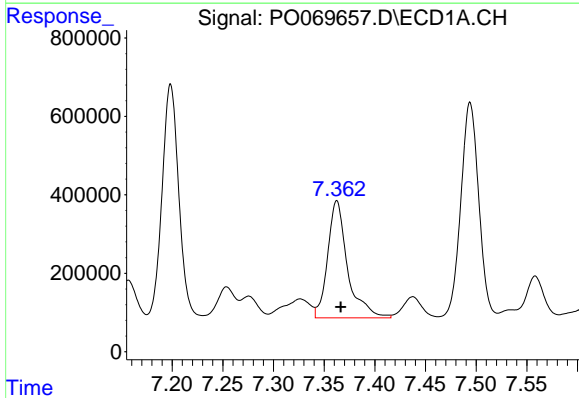
R.T.: 7.917 min
 Delta R.T.: -0.003 min
 Response: 13153192
 Conc: 4371.58 ng/ml

Instrument :
 ECD_S
 ClientSampleId :



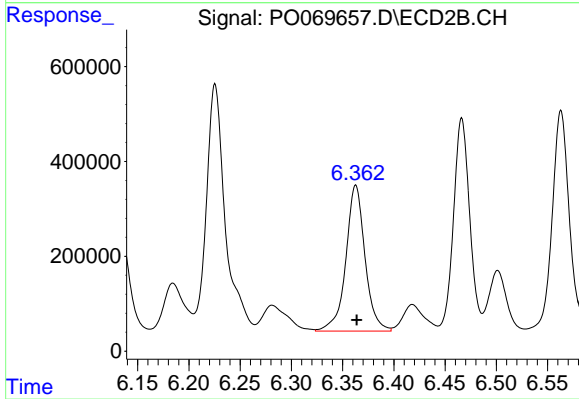
#30 AR-1254-5

R.T.: 6.890 min
 Delta R.T.: -0.001 min
 Response: 13984738
 Conc: 3896.61 ng/ml



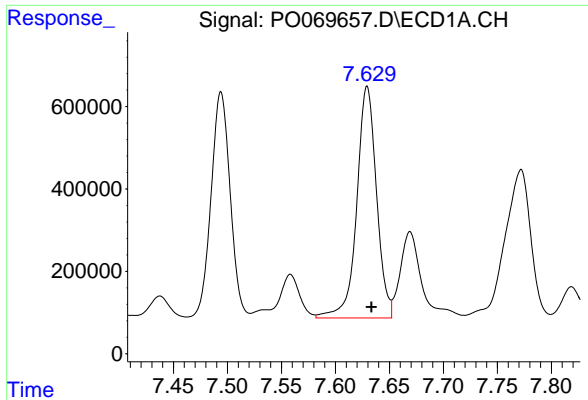
#31 AR-1260-1

R.T.: 7.362 min
 Delta R.T.: -0.004 min
 Response: 4091817
 Conc: 1556.17 ng/ml



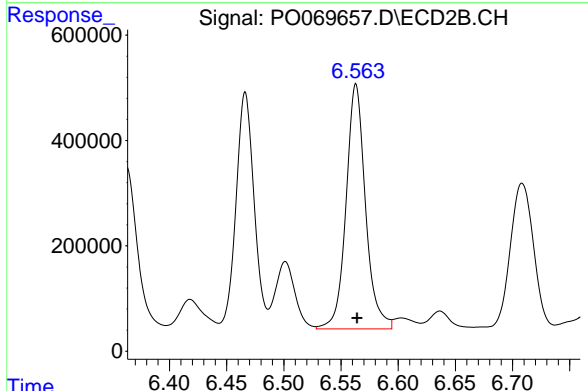
#31 AR-1260-1

R.T.: 6.363 min
 Delta R.T.: 0.000 min
 Response: 4005984
 Conc: 1518.81 ng/ml

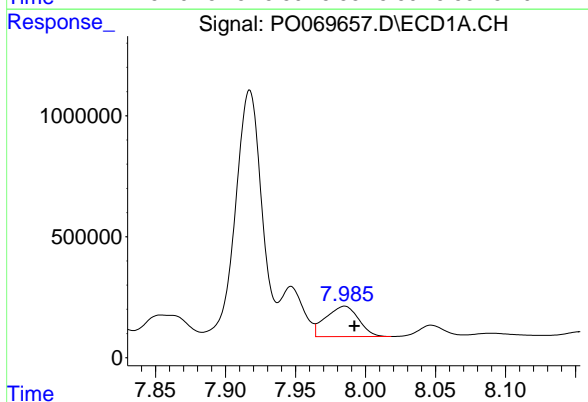


#32 AR-1260-2
 R.T.: 7.629 min
 Delta R.T.: -0.004 min
 Response: 7168270
 Conc: 2020.71 ng/ml

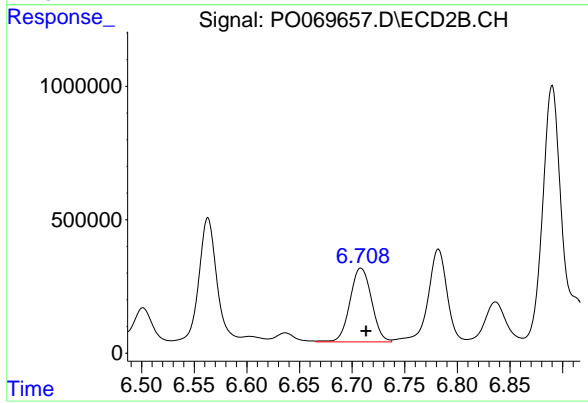
Instrument :
 ECD_S
 ClientSampleId :



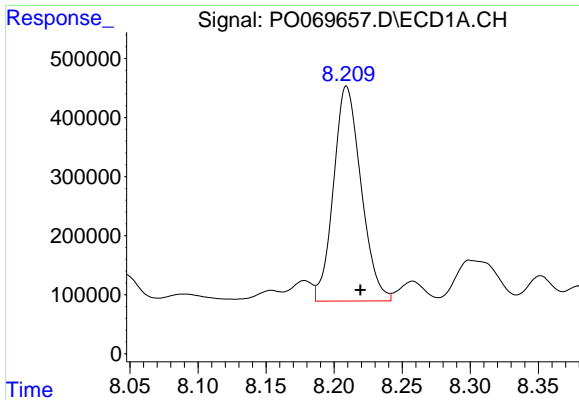
#32 AR-1260-2
 R.T.: 6.563 min
 Delta R.T.: 0.000 min
 Response: 5514503
 Conc: 1684.77 ng/ml



#33 AR-1260-3
 R.T.: 7.985 min
 Delta R.T.: -0.007 min
 Response: 2042478
 Conc: 706.50 ng/ml

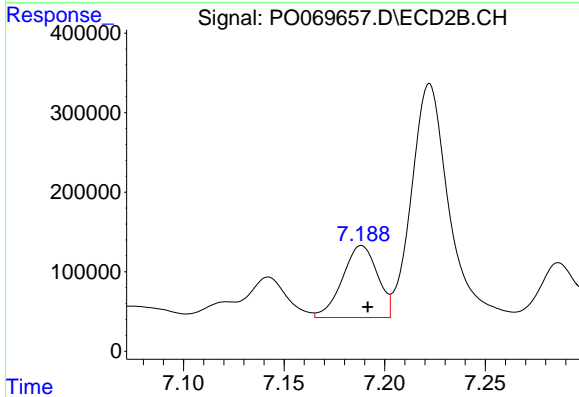


#33 AR-1260-3
 R.T.: 6.708 min
 Delta R.T.: -0.005 min
 Response: 3951018
 Conc: 1297.70 ng/ml

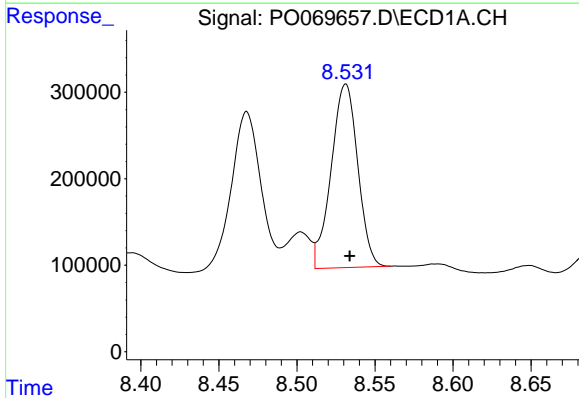


#34 AR-1260-4
 R.T.: 8.209 min
 Delta R.T.: -0.010 min
 Response: 5125208
 Conc: 1730.36 ng/ml

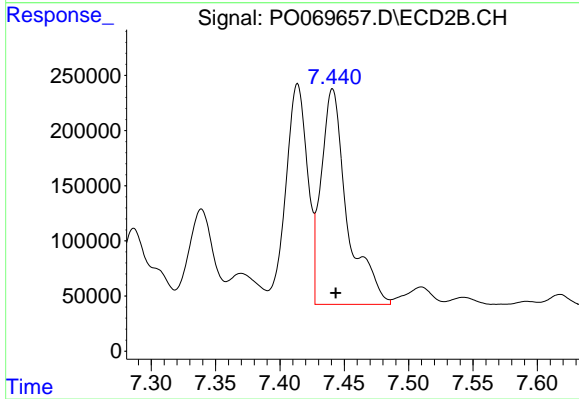
Instrument :
 ECD_S
 ClientSampleId :



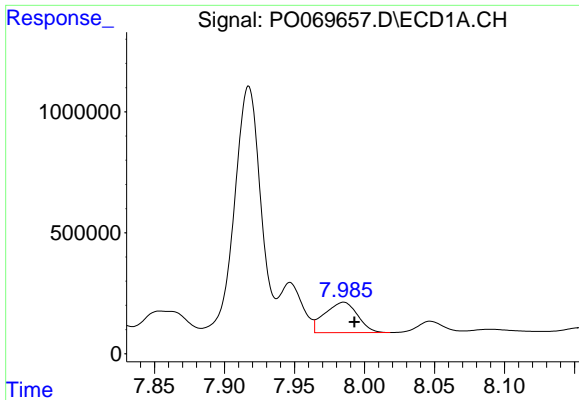
#34 AR-1260-4
 R.T.: 7.189 min
 Delta R.T.: -0.003 min
 Response: 1096410
 Conc: 405.06 ng/ml



#35 AR-1260-5
 R.T.: 8.531 min
 Delta R.T.: -0.003 min
 Response: 2521548
 Conc: 372.66 ng/ml



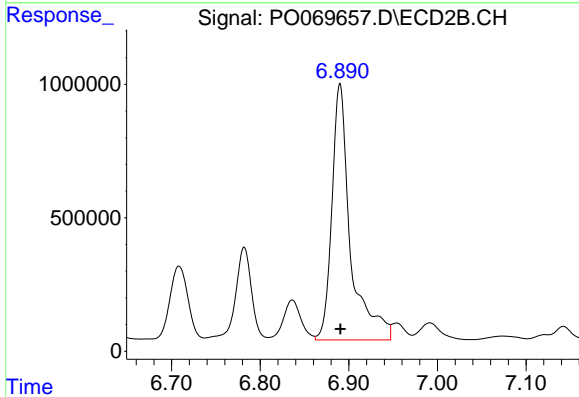
#35 AR-1260-5
 R.T.: 7.441 min
 Delta R.T.: -0.002 min
 Response: 2762606
 Conc: 431.08 ng/ml



#36 AR-1262-1

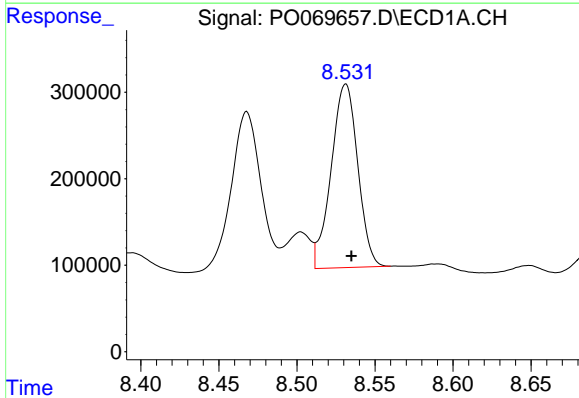
R.T.: 7.985 min
Delta R.T.: -0.008 min
Response: 2042478
Conc: 513.25 ng/ml

Instrument :
ECD_S
ClientSampleId :



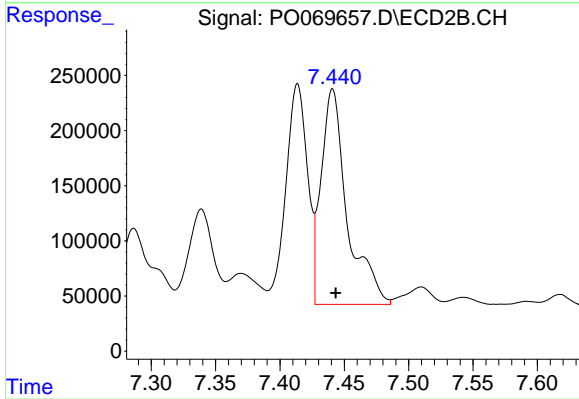
#36 AR-1262-1

R.T.: 6.890 min
Delta R.T.: 0.000 min
Response: 13984738
Conc: 7242.23 ng/ml



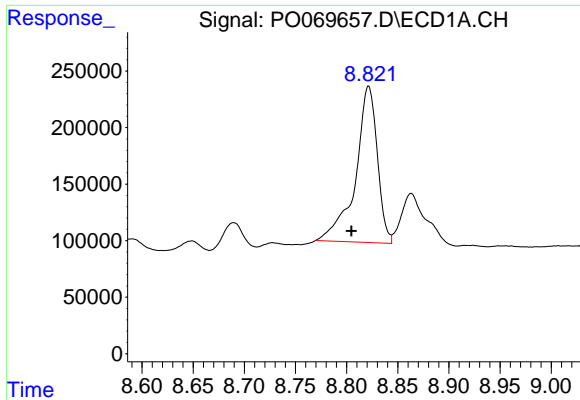
#37 AR-1262-2

R.T.: 8.531 min
Delta R.T.: -0.003 min
Response: 2521548
Conc: 349.34 ng/ml



#37 AR-1262-2

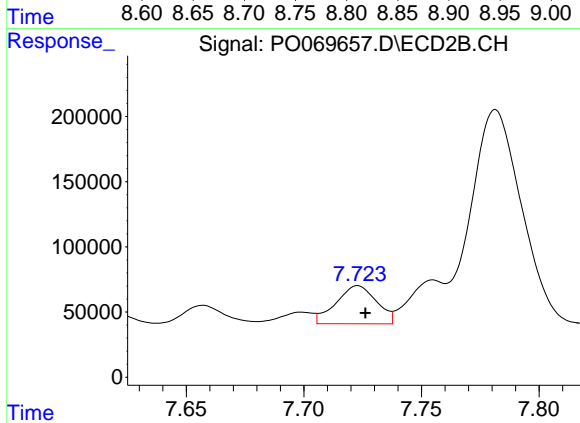
R.T.: 7.441 min
Delta R.T.: -0.002 min
Response: 2762606
Conc: 423.11 ng/ml



#38 AR-1262-3

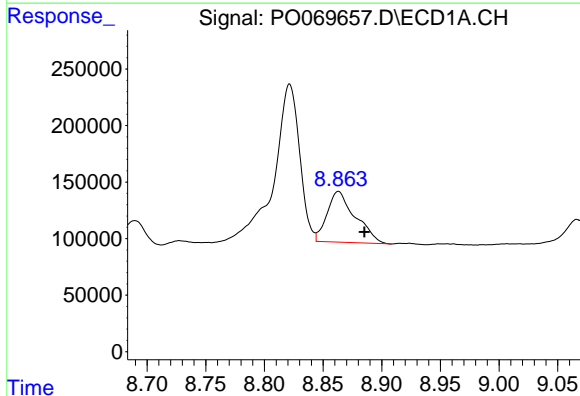
R.T.: 8.822 min
 Delta R.T.: 0.017 min
 Response: 2051999
 Conc: 428.55 ng/ml

Instrument :
 ECD_S
 ClientSampleId :



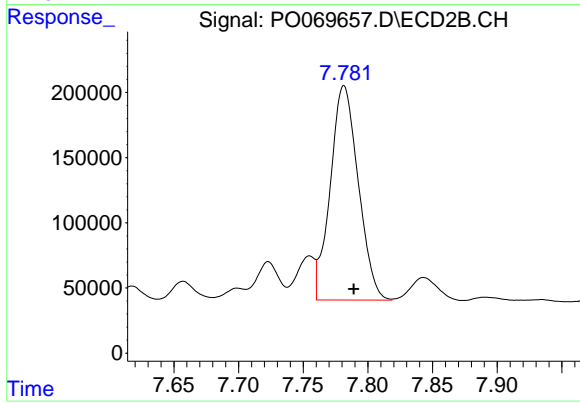
#38 AR-1262-3

R.T.: 7.723 min
 Delta R.T.: -0.003 min
 Response: 349874
 Conc: 129.82 ng/ml



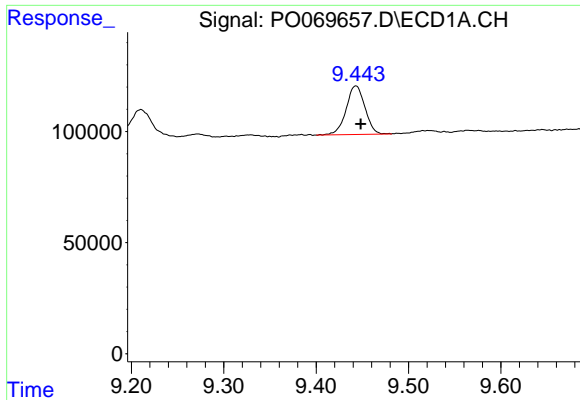
#39 AR-1262-4

R.T.: 8.863 min
 Delta R.T.: -0.022 min
 Response: 752075
 Conc: 387.99 ng/ml



#39 AR-1262-4

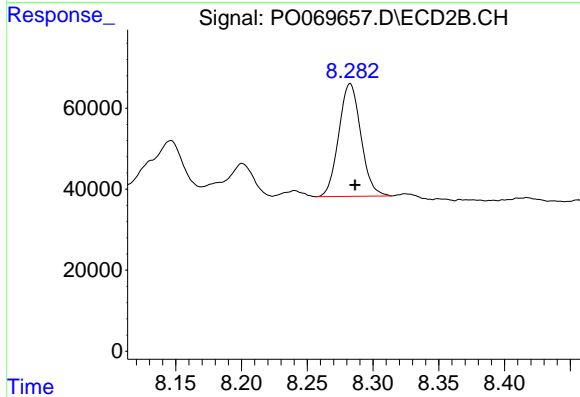
R.T.: 7.782 min
 Delta R.T.: -0.008 min
 Response: 2474378
 Conc: 496.95 ng/ml



#40 AR-1262-5

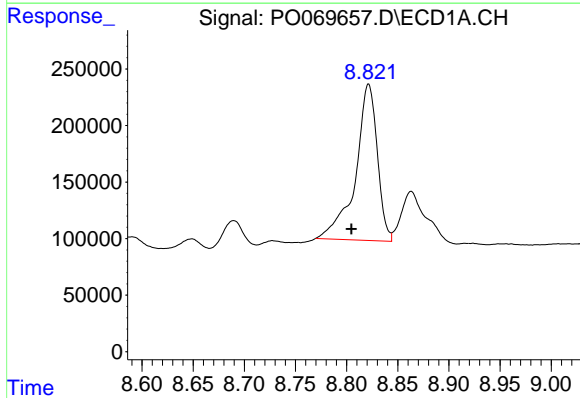
R.T.: 9.443 min
Delta R.T.: -0.005 min
Response: 308742
Conc: 118.38 ng/ml

Instrument :
ECD_S
ClientSampleId :



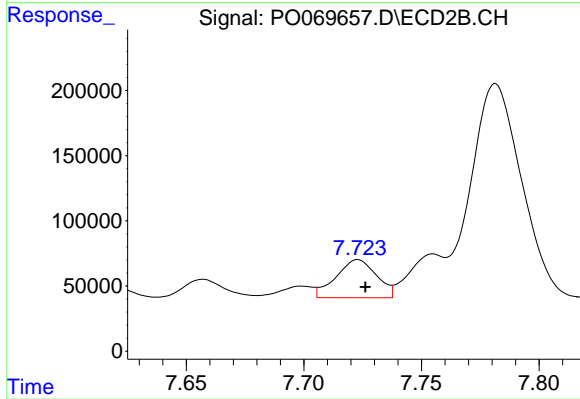
#40 AR-1262-5

R.T.: 8.283 min
Delta R.T.: -0.004 min
Response: 325766
Conc: 131.10 ng/ml



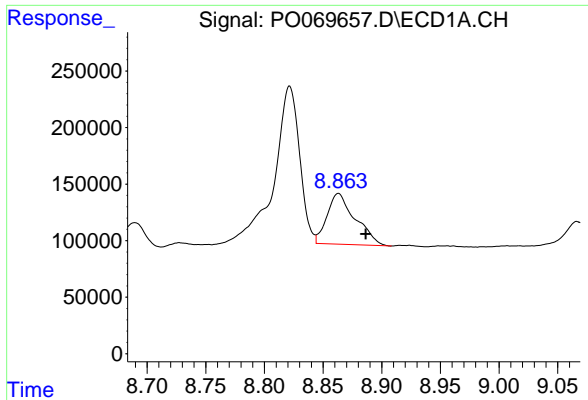
#41 AR-1268-1

R.T.: 8.822 min
Delta R.T.: 0.017 min
Response: 2051999
Conc: 223.86 ng/ml



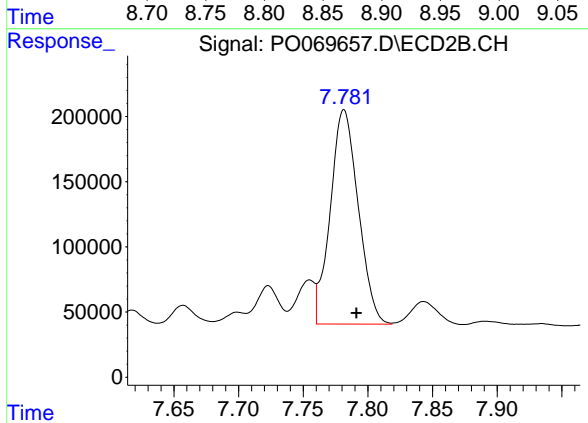
#41 AR-1268-1

R.T.: 7.723 min
Delta R.T.: -0.003 min
Response: 349874
Conc: 44.69 ng/ml

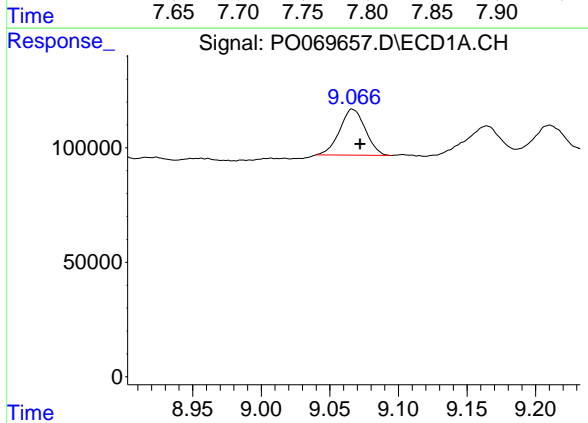


#42 AR-1268-2
 R.T.: 8.863 min
 Delta R.T.: -0.023 min
 Response: 752075
 Conc: 90.74 ng/ml

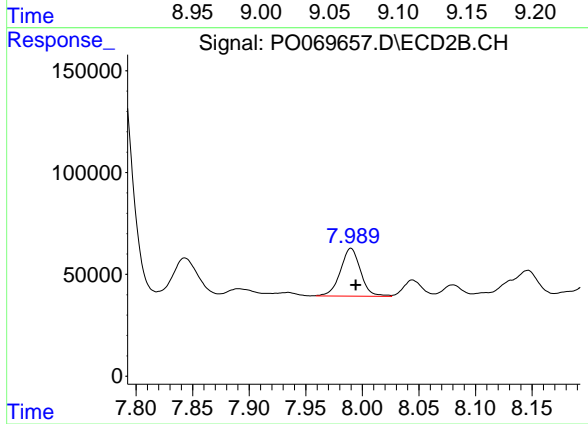
Instrument :
 ECD_S
 ClientSampled :



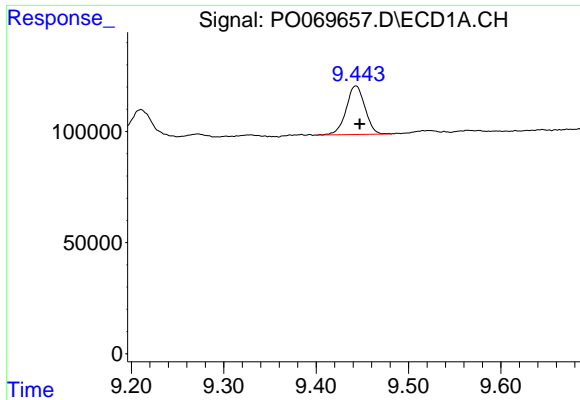
#42 AR-1268-2
 R.T.: 7.782 min
 Delta R.T.: -0.010 min
 Response: 2474378
 Conc: 346.41 ng/ml



#43 AR-1268-3
 R.T.: 9.067 min
 Delta R.T.: -0.005 min
 Response: 262781
 Conc: 37.14 ng/ml

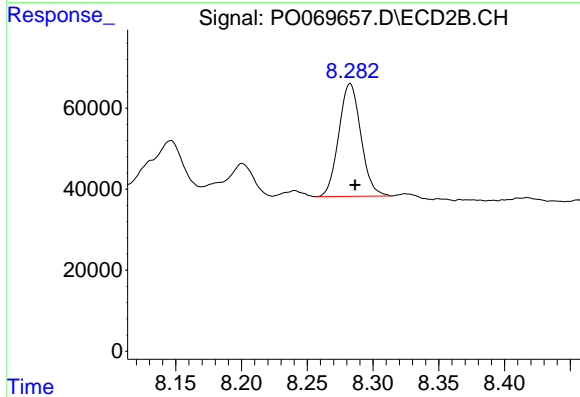


#43 AR-1268-3
 R.T.: 7.990 min
 Delta R.T.: -0.004 min
 Response: 290938
 Conc: 48.72 ng/ml

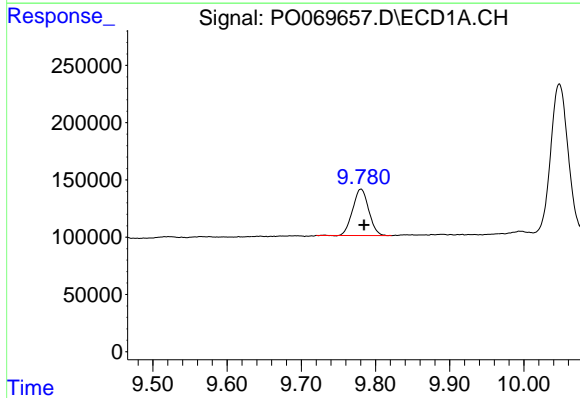


#44 AR-1268-4
 R.T.: 9.443 min
 Delta R.T.: -0.004 min
 Response: 308742
 Conc: 101.86 ng/ml

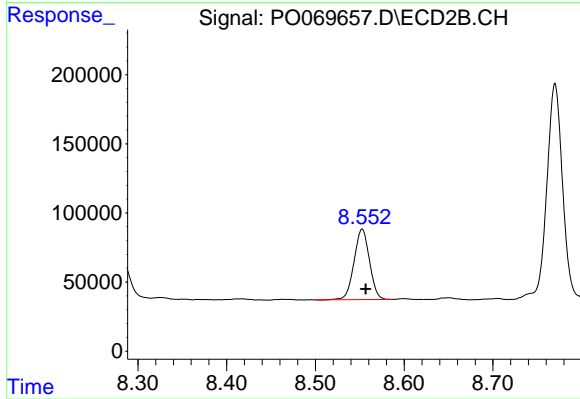
Instrument :
 ECD_S
 ClientSampled :



#44 AR-1268-4
 R.T.: 8.283 min
 Delta R.T.: -0.004 min
 Response: 325766
 Conc: 112.64 ng/ml



#45 AR-1268-5
 R.T.: 9.780 min
 Delta R.T.: -0.004 min
 Response: 613177
 Conc: 27.60 ng/ml



#45 AR-1268-5
 R.T.: 8.553 min
 Delta R.T.: -0.004 min
 Response: 614002
 Conc: 31.84 ng/ml