

Data Path : Z:\pestpcbsrv\HPCHEM1\ECD_S\Data\PS071420\
 Data File : PS011210.D
 Signal(s) : Signal #1: ECD1A.ch Signal #2: ECD2B.ch
 Acq On : 14 Jul 2020 10:03
 Operator : DD\AJ
 Sample : PB130049BL
 Misc :
 ALS Vial : 4 Sample Multiplier: 1

Instrument :
 ECD_S
 ClientSampleId :

Integration File signal 1: autoint1.e
 Integration File signal 2: autoint2.e
 Quant Time: Jul 14 12:16:25 2020
 Quant Method : Z:\pestpcbsrv\HPCHEM1\ECD_S\Method\PS071320.M
 Quant Title : 8080.M
 QLast Update : Mon Jul 13 16:10:29 2020
 Response via : Initial Calibration
 Integrator: ChemStation

Volume Inj. : 2 µl
 Signal #1 Phase : Rtx-CLPesticides Signal #2 Phase: Rtx-CLPesticides2
 Signal #1 Info : 30M x 0.32mm x0.5 Signal #2 Info : 30M x 0.32mm x 0.25µm

| | Compound | RT#1 | RT#2 | Resp#1 | Resp#2 | ng/ml | ng/ml |
|-----------------------------|--------------|--------|--------|----------|----------|---------|-----------|
| ----- | | | | | | | |
| System Monitoring Compounds | | | | | | | |
| 4) S | 2,4-DCAA | 7.231 | 6.917 | 260.8E6 | 175.0E6 | 268.747 | 310.902 |
| Target Compounds | | | | | | | |
| 1) T | Dalapon | 2.993 | 2.578 | 50745942 | 147.9E6 | 42.170 | 192.688 # |
| 2) T | 3,5-DICHL... | 0.000 | 6.096 | 0 | 70925205 | N.D. | 84.450 |
| 3) T | 4-Nitroph... | 6.998 | 0.000 | 6230054 | 0 | 14.132 | N.D. # |
| 5) T | DICAMBA | 7.411 | 0.000 | 6666592 | 0 | 1.720 | N.D. # |
| 6) T | MCPD | 7.643 | 0.000 | 6442262 | 0 | 2.127 | N.D. # |
| 7) T | MCPA | 7.694 | 7.457 | 192.6E6 | 170.8E6 | 45.157 | 59.268 # |
| 8) T | DICHLORPROP | 0.000 | 7.737 | 0 | 12689680 | N.D. | 21.082 |
| 9) T | 2,4-D | 0.000 | 7.937 | 0 | 10048579 | N.D. | 13.404 |
| 10) T | Pentachlo... | 8.712 | 0.000 | 15565563 | 0 | 1.178 | N.D. # |
| 12) T | 2,4,5-T | 9.430 | 9.236 | 37153337 | 21884185 | 7.363 | 7.215 |
| 15) T | Picloram | 11.030 | 11.002 | 139.5E6 | 119.1E6 | 22.104 | 27.222 |
| 16) T | DCPA | 0.000 | 11.002 | 0 | 119.1E6 | N.D. | 31.479 |

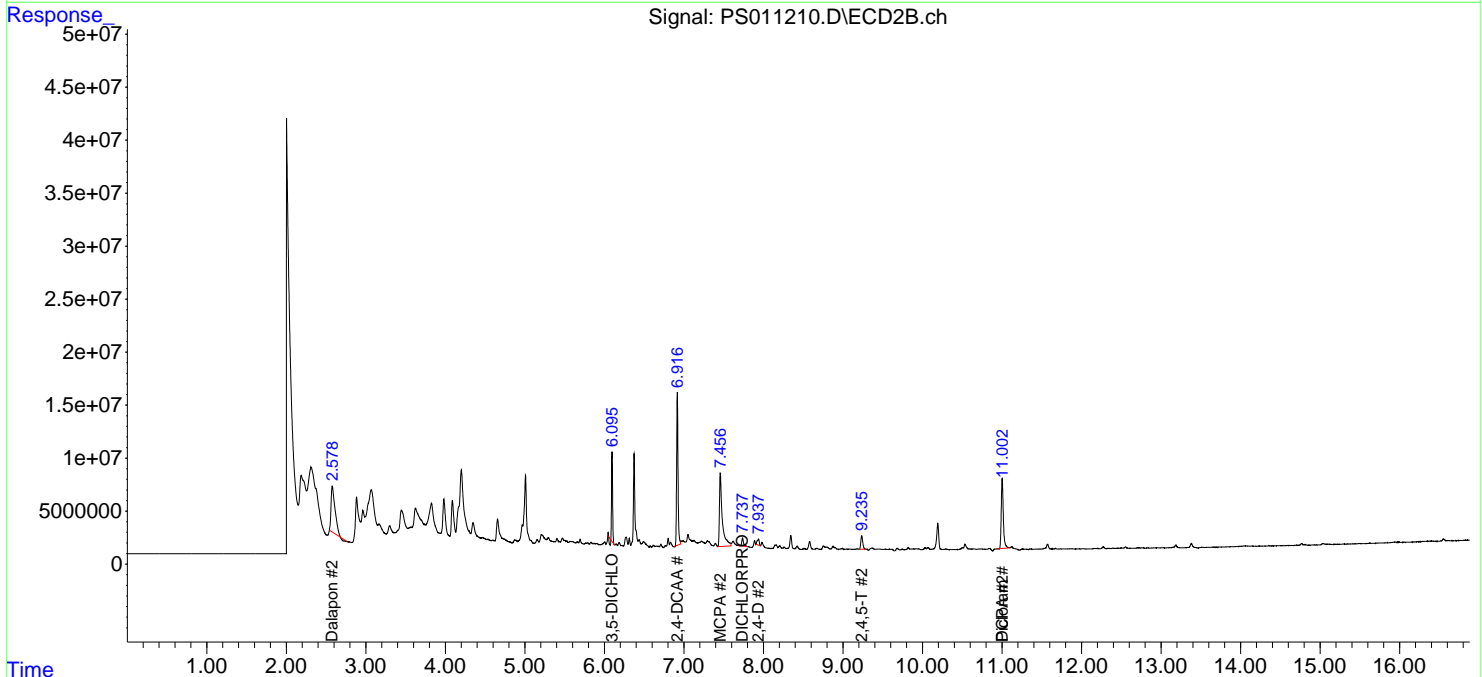
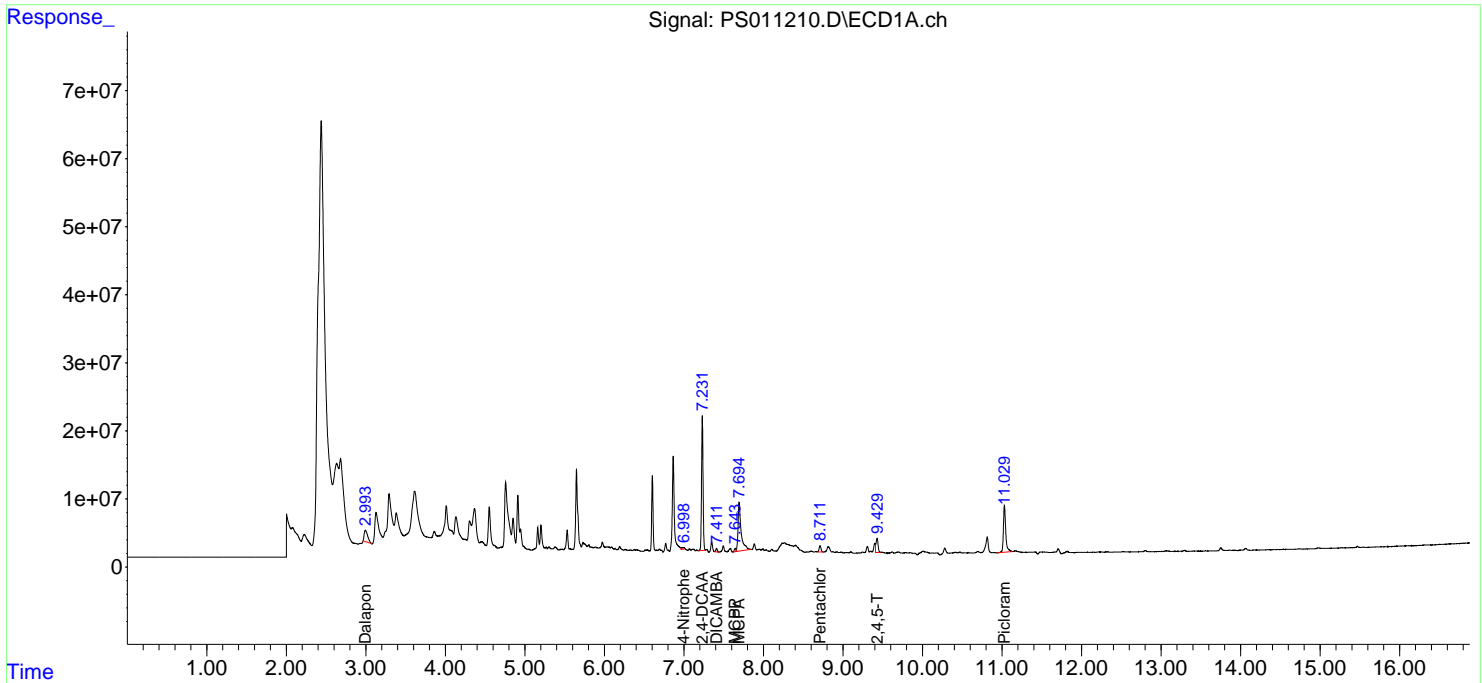
(f)=RT Delta > 1/2 Window (#)=Amounts differ by > 25% (m)=manual int.

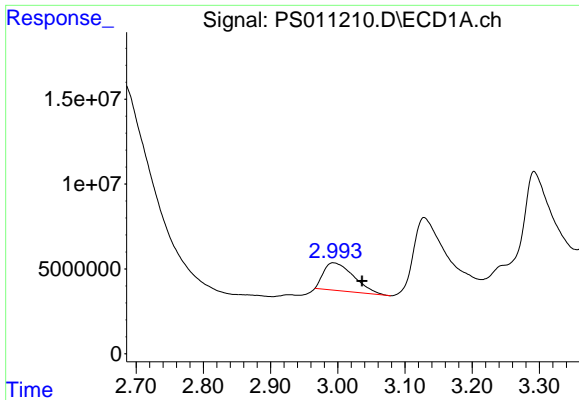
Data Path : Z:\pestpcbsrv\HPCHEM1\ECD_S\Data\PS071420\
 Data File : PS011210.D
 Signal(s) : Signal #1: ECD1A.ch Signal #2: ECD2B.ch
 Acq On : 14 Jul 2020 10:03
 Operator : DD\AJ
 Sample : PB130049BL
 Misc :
 ALS Vial : 4 Sample Multiplier: 1

Instrument :
 ECD_S
 ClientSampled :

Integration File signal 1: autoint1.e
 Integration File signal 2: autoint2.e
 Quant Time: Jul 14 12:16:25 2020
 Quant Method : Z:\pestpcbsrv\HPCHEM1\ECD_S\Method\PS071320.M
 Quant Title : 8080.M
 QLast Update : Mon Jul 13 16:10:29 2020
 Response via : Initial Calibration
 Integrator: ChemStation

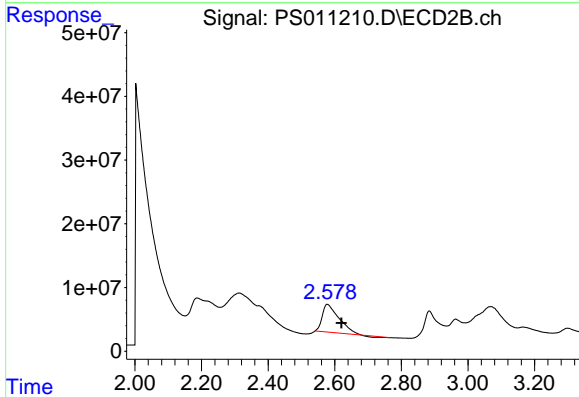
Volume Inj. : 2 µl
 Signal #1 Phase : Rtx-CLPesticides Signal #2 Phase: Rtx-CLPesticides2
 Signal #1 Info : 30M x 0.32mm x0.5 Signal #2 Info : 30M x 0.32mm x 0.25µm



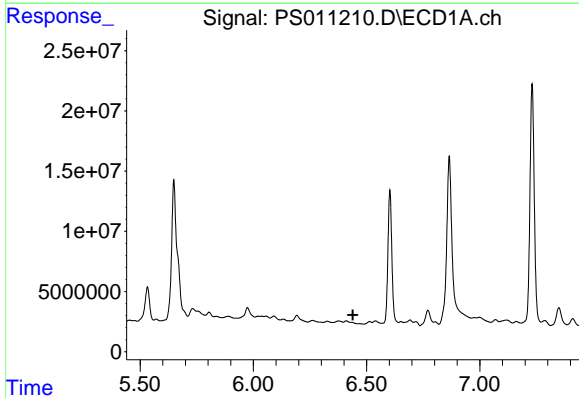


#1 Dalapon
 R.T.: 2.993 min
 Delta R.T.: -0.043 min
 Response: 50745942
 Conc: 42.17 ng/ml

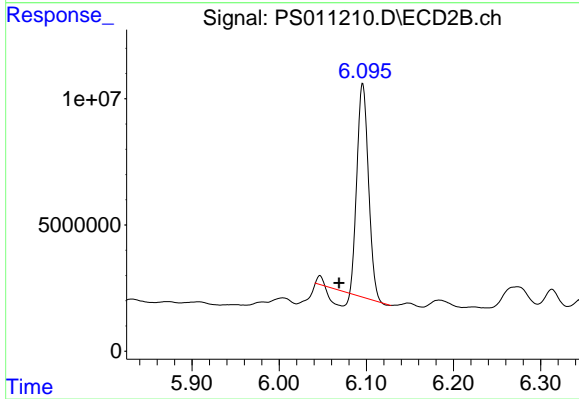
Instrument :
 ECD_S
 ClientSampled :



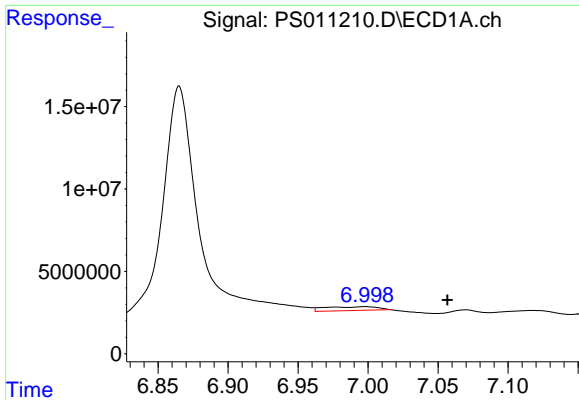
#1 Dalapon
 R.T.: 2.578 min
 Delta R.T.: -0.042 min
 Response: 147920907
 Conc: 192.69 ng/ml



#2 3,5-DICHLOROBENZOIC ACID
 R.T.: 0.000 min
 Exp R.T. : 6.439 min
 Response: 0
 Conc: N.D.

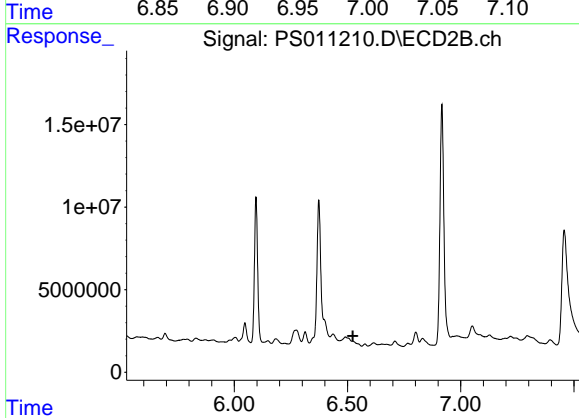


#2 3,5-DICHLOROBENZOIC ACID
 R.T.: 6.096 min
 Delta R.T.: 0.027 min
 Response: 70925205
 Conc: 84.45 ng/ml

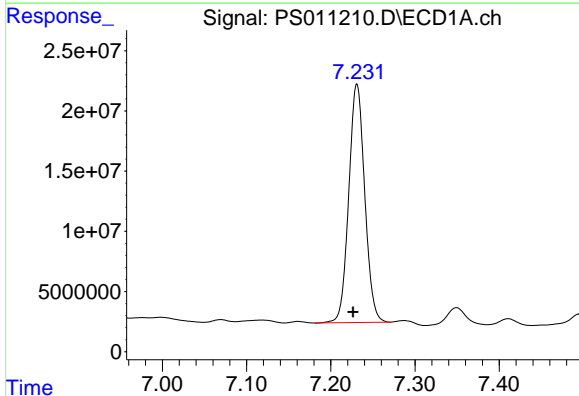


#3 4-Nitrophenol
 R.T.: 6.998 min
 Delta R.T.: -0.059 min
 Response: 6230054
 Conc: 14.13 ng/ml

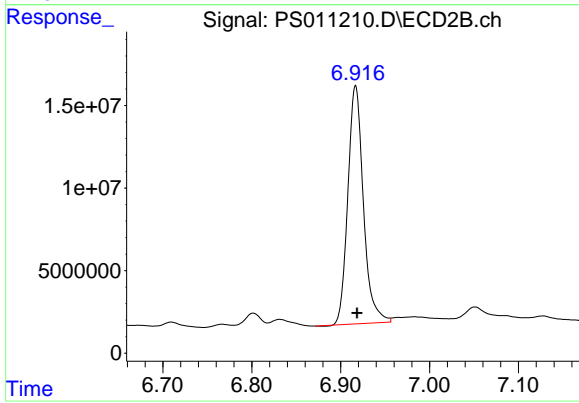
Instrument :
 ECD_S
 ClientSampled :



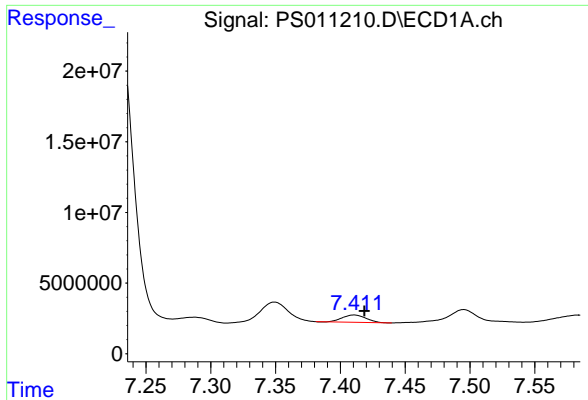
#3 4-Nitrophenol
 R.T.: 0.000 min
 Exp R.T. : 6.524 min
 Response: 0
 Conc: N.D.



#4 2,4-DCAA
 R.T.: 7.231 min
 Delta R.T.: 0.005 min
 Response: 260775701
 Conc: 268.75 ng/ml

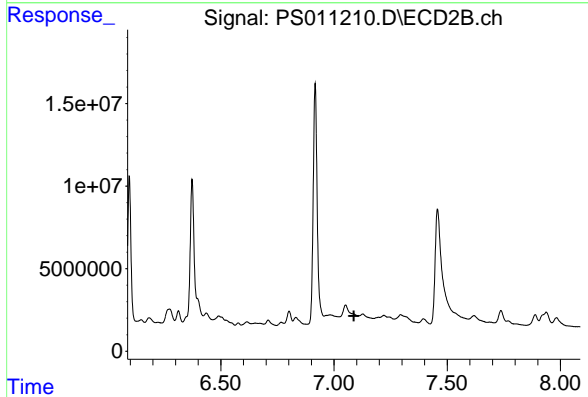


#4 2,4-DCAA
 R.T.: 6.917 min
 Delta R.T.: -0.002 min
 Response: 175044879
 Conc: 310.90 ng/ml

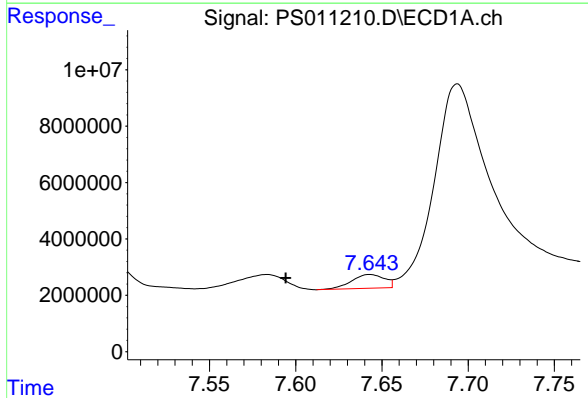


#5 DICAMBA
 R.T.: 7.411 min
 Delta R.T.: -0.008 min
 Response: 6666592
 Conc: 1.72 ng/ml

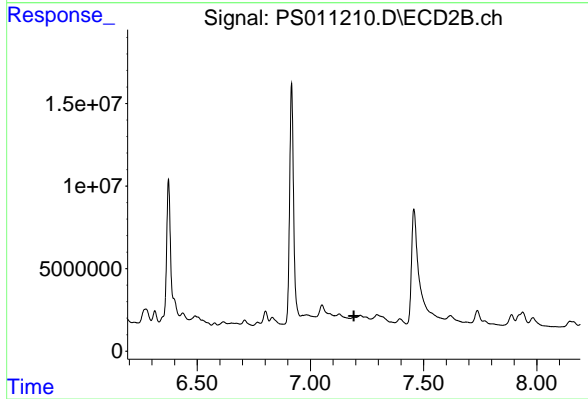
Instrument :
 ECD_S
 ClientSampleId :



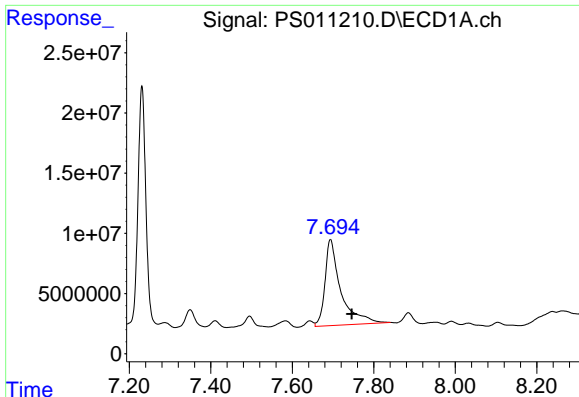
#5 DICAMBA
 R.T.: 0.000 min
 Exp R.T. : 7.088 min
 Response: 0
 Conc: N.D.



#6 MCPP
 R.T.: 7.643 min
 Delta R.T.: 0.049 min
 Response: 6442262
 Conc: 2.13 ug/ml



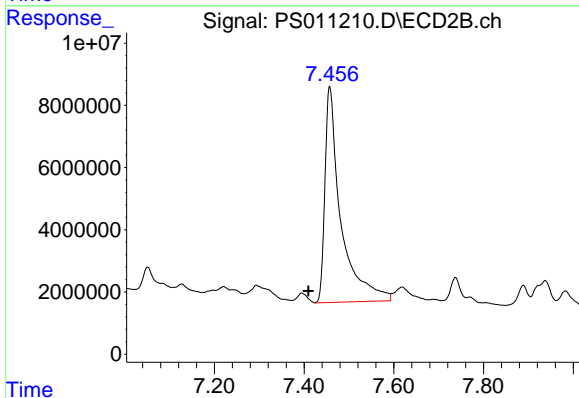
#6 MCPP
 R.T.: 0.000 min
 Exp R.T. : 7.192 min
 Response: 0
 Conc: N.D.



#7 MCPA

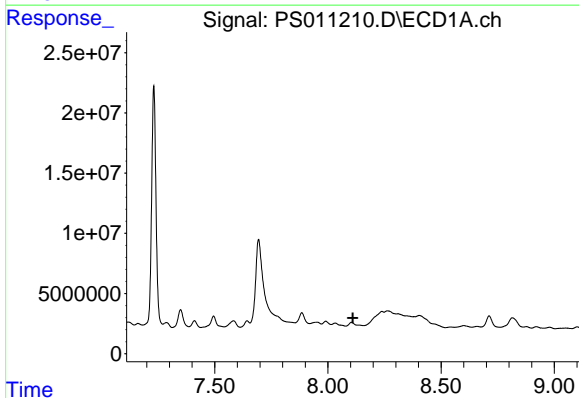
R.T.: 7.694 min
Delta R.T.: -0.052 min
Response: 192580332
Conc: 45.16 ug/ml

Instrument :
ECD_S
ClientSampled :



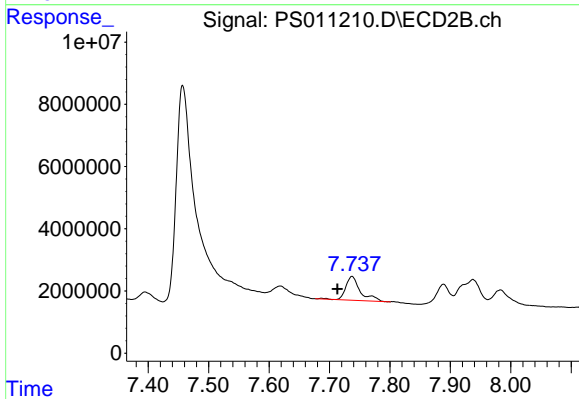
#7 MCPA

R.T.: 7.457 min
Delta R.T.: 0.047 min
Response: 170829079
Conc: 59.27 ug/ml



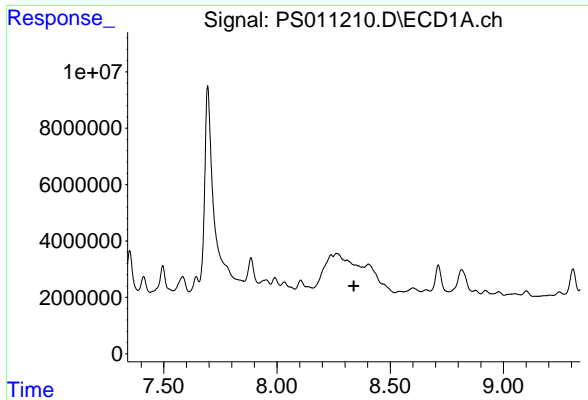
#8 DICHLORPROP

R.T.: 0.000 min
Exp R.T. : 8.110 min
Response: 0
Conc: N.D.



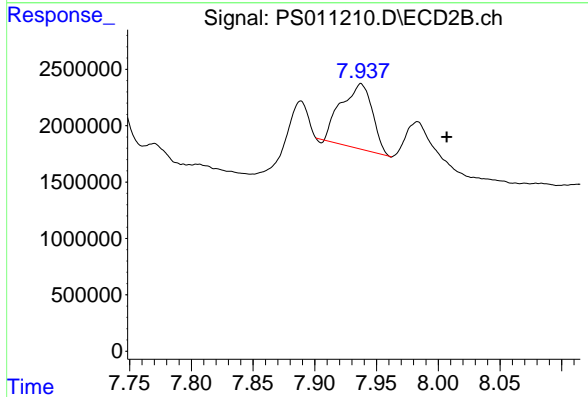
#8 DICHLORPROP

R.T.: 7.737 min
Delta R.T.: 0.024 min
Response: 12689680
Conc: 21.08 ng/ml

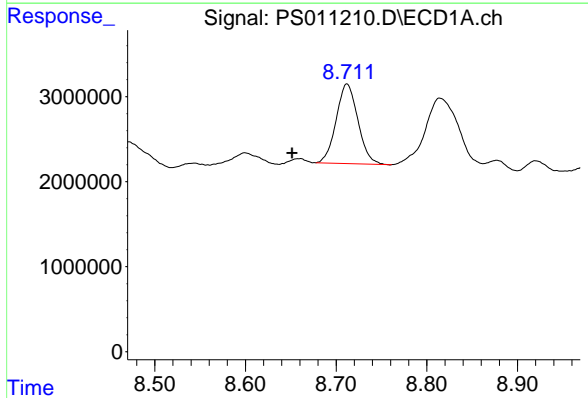


#9 2,4-D
 R.T.: 0.000 min
 Exp R.T.: 8.339 min
 Response: 0
 Conc: N.D.

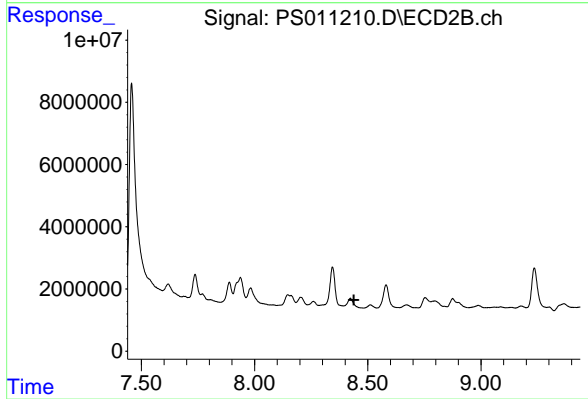
Instrument :
 ECD_S
 ClientSampleId :



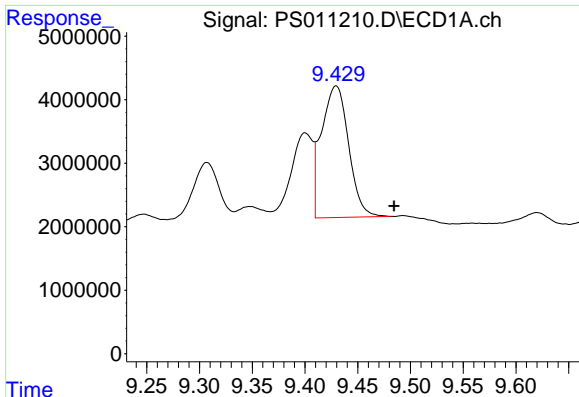
#9 2,4-D
 R.T.: 7.937 min
 Delta R.T.: -0.070 min
 Response: 10048579
 Conc: 13.40 ng/ml



#10 Pentachlorophenol
 R.T.: 8.712 min
 Delta R.T.: 0.061 min
 Response: 15565563
 Conc: 1.18 ng/ml



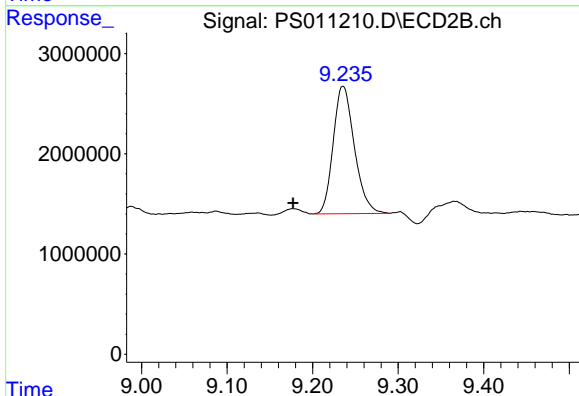
#10 Pentachlorophenol
 R.T.: 0.000 min
 Exp R.T.: 8.438 min
 Response: 0
 Conc: N.D.



#12 2,4,5-T

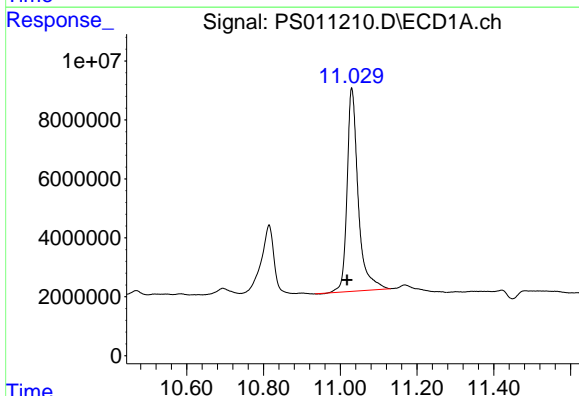
R.T.: 9.430 min
 Delta R.T.: -0.055 min
 Response: 37153337
 Conc: 7.36 ng/ml

Instrument :
 ECD_S
 ClientSampleId :



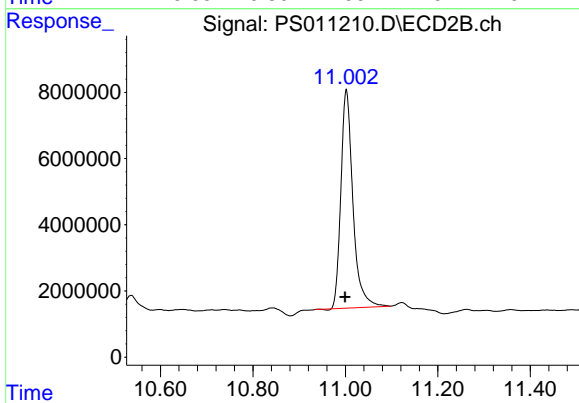
#12 2,4,5-T

R.T.: 9.236 min
 Delta R.T.: 0.058 min
 Response: 21884185
 Conc: 7.22 ng/ml



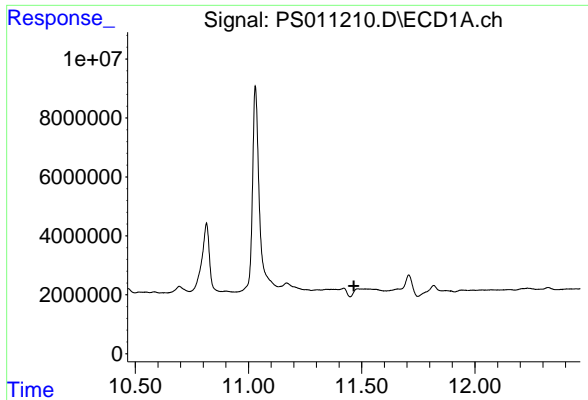
#15 Picloram

R.T.: 11.030 min
 Delta R.T.: 0.012 min
 Response: 139474474
 Conc: 22.10 ng/ml



#15 Picloram

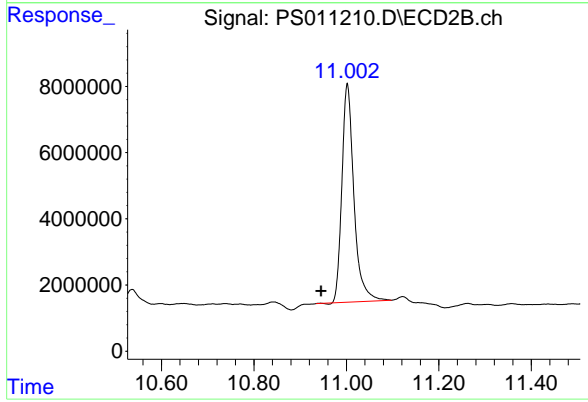
R.T.: 11.002 min
 Delta R.T.: 0.003 min
 Response: 119050066
 Conc: 27.22 ng/ml



#16 DCPA

R.T.: 0.000 min
Exp R.T.: 11.466 min
Response: 0
Conc: N.D.

Instrument :
ECD_S
ClientSampled :



#16 DCPA

R.T.: 11.002 min
Delta R.T.: 0.056 min
Response: 119050066
Conc: 31.48 ng/ml