

Data Path : Z:\pestpcbsrv\HPCHEM1\ECD_S\Data\PS071421\
 Data File : PS016107.D
 Signal(s) : Signal #1: ECD1A.ch Signal #2: ECD2B.ch
 Acq On : 14 Jul 2021 20:38
 Operator : DD\AJ
 Sample : HSTDCCC750
 Misc :
 ALS Vial : 3 Sample Multiplier: 1

Instrument :
 ECD_S
 ClientSampleId :

Integration File signal 1: autoint1.e
 Integration File signal 2: autoint2.e
 Quant Time: Jul 15 06:54:21 2021
 Quant Method : Z:\pestpcbsrv\HPCHEM1\ECD_S\Method\PS063021.M
 Quant Title : 8080.M
 QLast Update : Wed Jun 30 00:31:48 2021
 Response via : Initial Calibration
 Integrator: ChemStation

Volume Inj. : 2 µl
 Signal #1 Phase : Rtx-CLPesticides Signal #2 Phase: Rtx-CLPesticides2
 Signal #1 Info : 30M x 0.32mm x0.5 Signal #2 Info : 30M x 0.32mm x 0.25µm

	Compound	RT#1	RT#2	Resp#1	Resp#2	ng/ml	ng/ml

System Monitoring Compounds							
4) S	2,4-DCAA	7.187	6.766	1176.4E6	405.2E6	766.315	789.300
Target Compounds							
1) T	Dalapon	3.017	2.518	1457.0E6	488.3E6	671.797	698.614
2) T	3,5-DICHL...	6.405	5.957	1558.6E6	574.7E6	718.583	746.666
3) T	4-Nitroph...	7.014	6.386	600.9E6	227.0E6	679.451	719.071
5) T	DICAMBA	7.378	6.929	4231.6E6	1602.1E6	738.597	760.572
6) T	MCP P	7.548	7.026	329.1E6	127.1E6	75.057	76.619
7) T	MCPA	7.696	7.238	464.4E6	192.2E6	73.029	72.900
8) T	DICHLORPROP	8.070	7.548	1000.9E6	394.3E6	719.563	748.695
9) T	2,4-D	8.299	7.840	1133.5E6	468.7E6	707.097	743.280
10) T	Pentachlo...	8.608	8.267	14123.2E6	5365.6E6	712.688	745.914
11) T	2,4,5-TP ...	9.158	8.628	5363.9E6	2151.6E6	722.867	762.541
12) T	2,4,5-T	9.442	9.004	5704.6E6	2167.2E6	730.543	751.279
13) T	2,4-DB	9.991	9.510	1147.2E6	284.6E6	690.628	757.154
14) T	DINOSEB	11.150	9.837	3895.4E6	1559.0E6	710.558	763.527
15) T	Picloram	10.969	10.815	7411.0E6	2977.8E6	673.716	715.717
16) T	DCPA	11.417	10.768	7749.2E6	3296.6E6	718.395	766.583

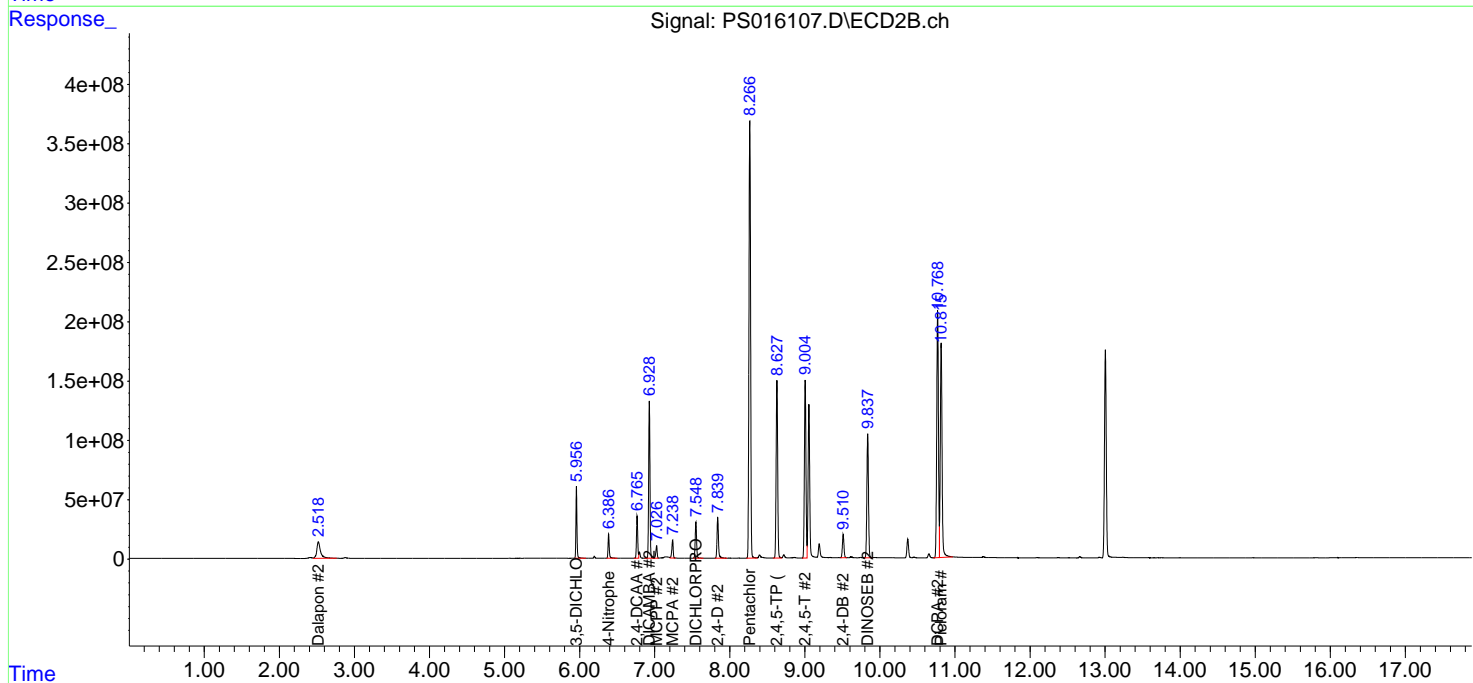
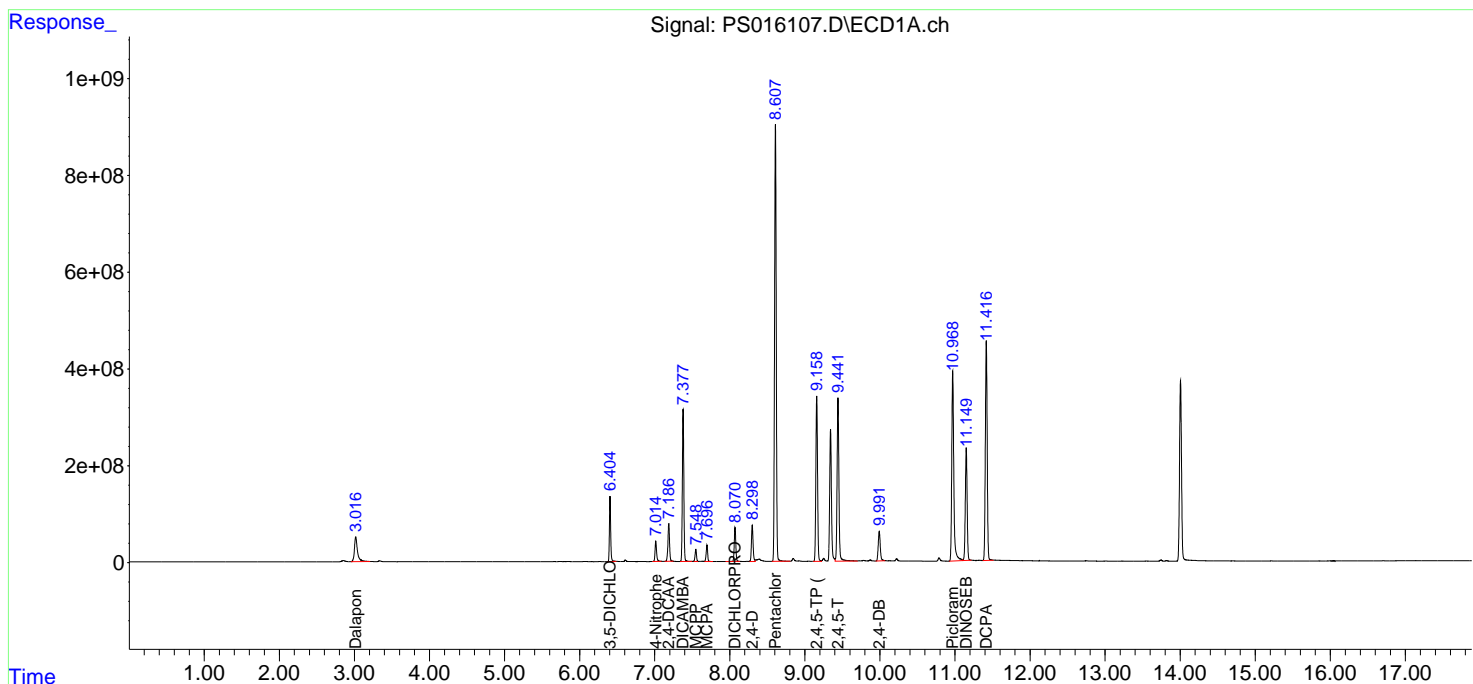
(f)=RT Delta > 1/2 Window (#)=Amounts differ by > 25% (m)=manual int.

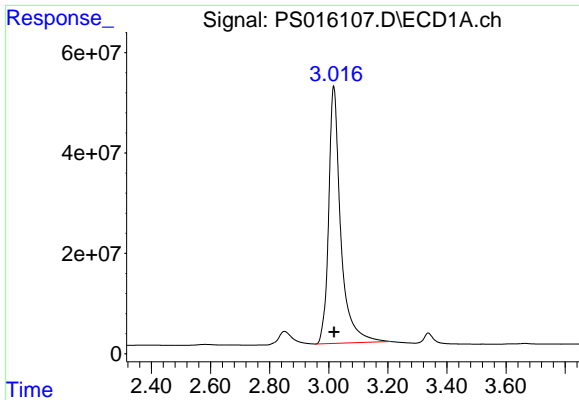
Data Path : Z:\pestpcbsrv\HPCHEM1\ECD_S\Data\PS071421\
 Data File : PS016107.D
 Signal(s) : Signal #1: ECD1A.ch Signal #2: ECD2B.ch
 Acq On : 14 Jul 2021 20:38
 Operator : DD\AJ
 Sample : HSTDCCC750
 Misc :
 ALS Vial : 3 Sample Multiplier: 1

Instrument :
 ECD_S
 ClientSampled :

Integration File signal 1: autoint1.e
 Integration File signal 2: autoint2.e
 Quant Time: Jul 15 06:54:21 2021
 Quant Method : Z:\pestpcbsrv\HPCHEM1\ECD_S\Method\PS063021.M
 Quant Title : 8080.M
 QLast Update : Wed Jun 30 00:31:48 2021
 Response via : Initial Calibration
 Integrator: ChemStation

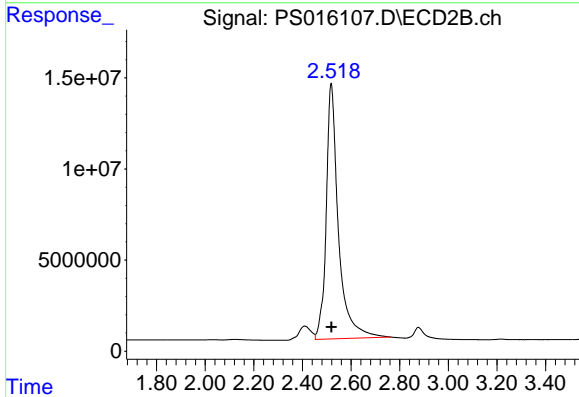
Volume Inj. : 2 µl
 Signal #1 Phase : Rtx-CLPesticides Signal #2 Phase: Rtx-CLPesticides2
 Signal #1 Info : 30M x 0.32mm x0.5 Signal #2 Info : 30M x 0.32mm x 0.25µm



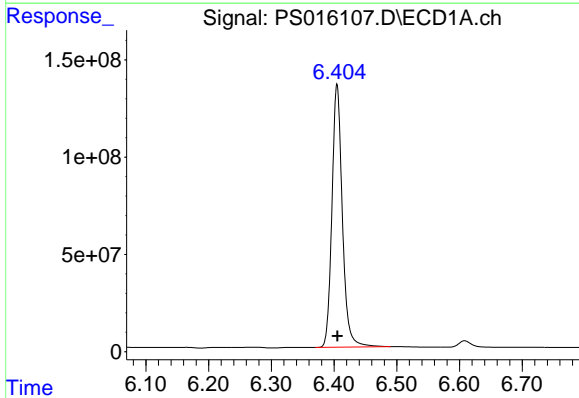


#1 Dalapon
 R.T.: 3.017 min
 Delta R.T.: -0.001 min
 Response: 1457044861
 Conc: 671.80 ng/ml

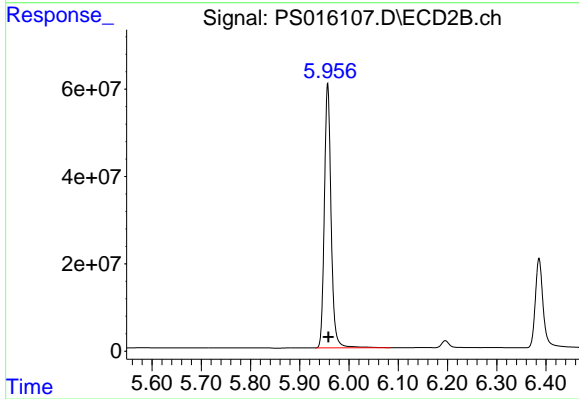
Instrument :
 ECD_S
 ClientSampled :



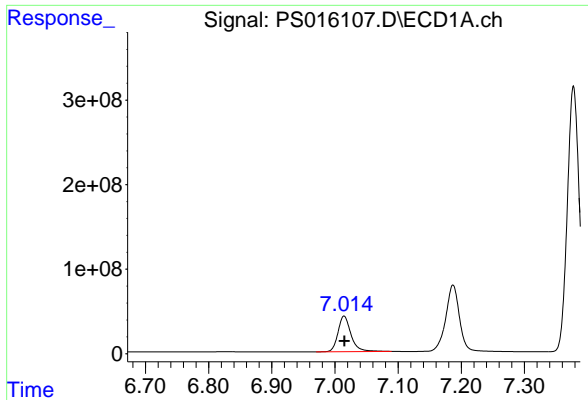
#1 Dalapon
 R.T.: 2.518 min
 Delta R.T.: -0.001 min
 Response: 488278918
 Conc: 698.61 ng/ml



#2 3,5-DICHLOROBENZOIC ACID
 R.T.: 6.405 min
 Delta R.T.: 0.000 min
 Response: 1558578840
 Conc: 718.58 ng/ml



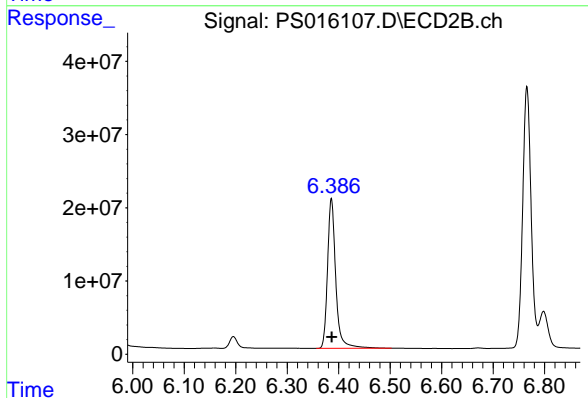
#2 3,5-DICHLOROBENZOIC ACID
 R.T.: 5.957 min
 Delta R.T.: -0.001 min
 Response: 574739994
 Conc: 746.67 ng/ml



#3 4-Nitrophenol

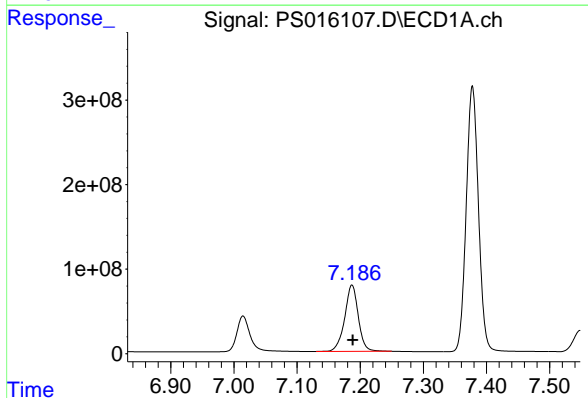
R.T.: 7.014 min
Delta R.T.: 0.000 min
Response: 600854910
Conc: 679.45 ng/ml

Instrument :
ECD_S
ClientSampleId :



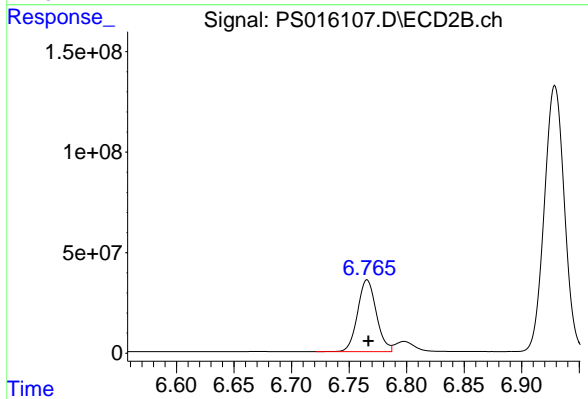
#3 4-Nitrophenol

R.T.: 6.386 min
Delta R.T.: 0.000 min
Response: 226957268
Conc: 719.07 ng/ml



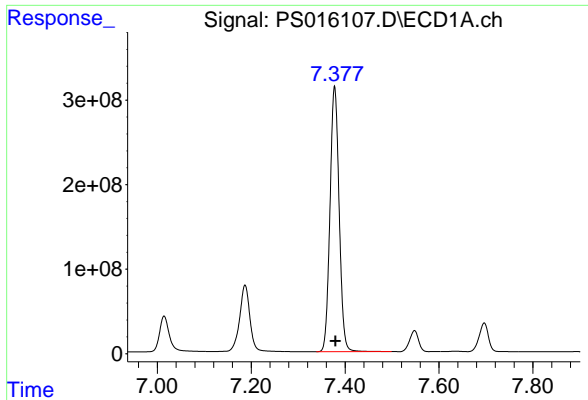
#4 2,4-DCAA

R.T.: 7.187 min
Delta R.T.: 0.000 min
Response: 1176445798
Conc: 766.31 ng/ml



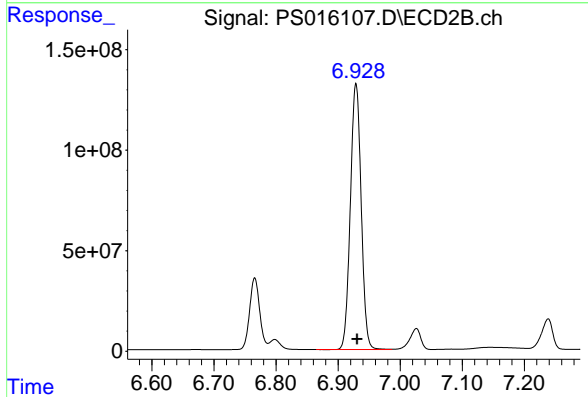
#4 2,4-DCAA

R.T.: 6.766 min
Delta R.T.: -0.001 min
Response: 405161347
Conc: 789.30 ng/ml

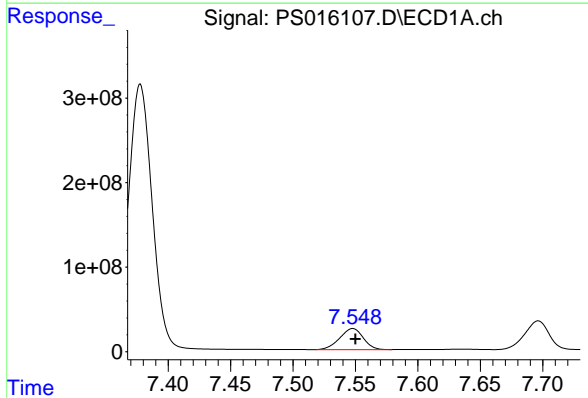


#5 DICAMBA
 R.T.: 7.378 min
 Delta R.T.: -0.002 min
 Response: 4231551159
 Conc: 738.60 ng/ml

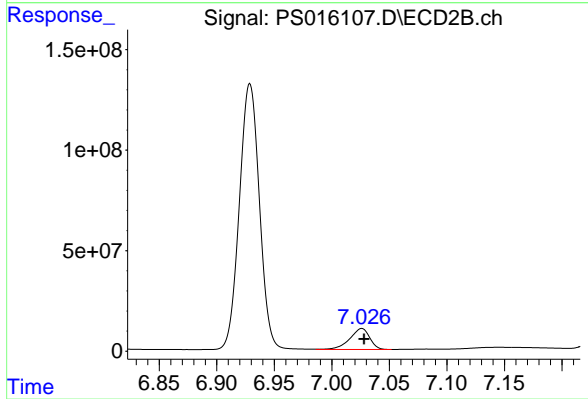
Instrument :
 ECD_S
 ClientSampled :



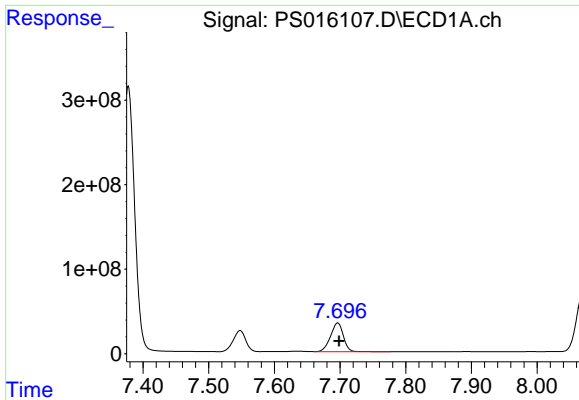
#5 DICAMBA
 R.T.: 6.929 min
 Delta R.T.: -0.002 min
 Response: 1602069707
 Conc: 760.57 ng/ml



#6 MCPP
 R.T.: 7.548 min
 Delta R.T.: -0.002 min
 Response: 329053251
 Conc: 75.06 ug/ml

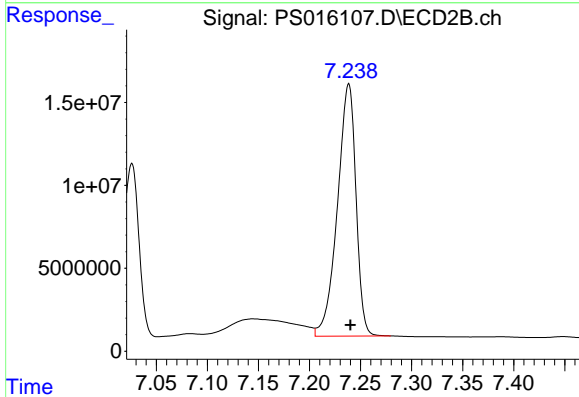


#6 MCPP
 R.T.: 7.026 min
 Delta R.T.: -0.002 min
 Response: 127117667
 Conc: 76.62 ug/ml

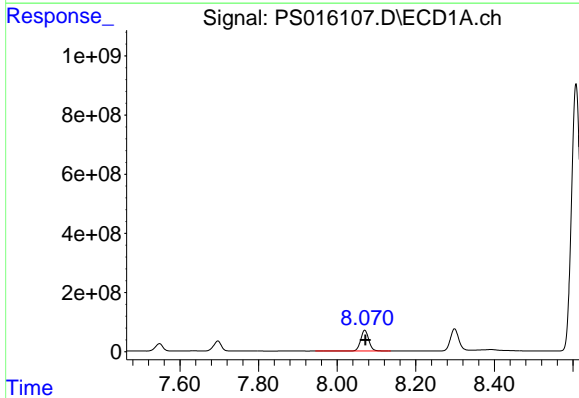


#7 MCPA
 R.T.: 7.696 min
 Delta R.T.: -0.002 min
 Response: 464401448
 Conc: 73.03 ug/ml

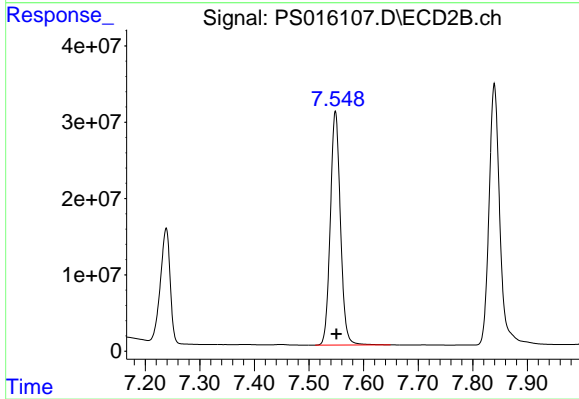
Instrument :
 ECD_S
 ClientSampleId :



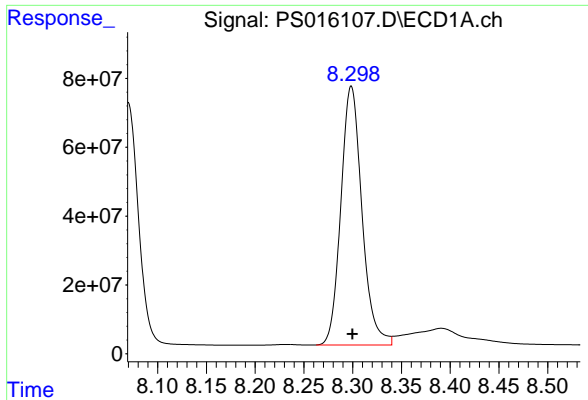
#7 MCPA
 R.T.: 7.238 min
 Delta R.T.: -0.002 min
 Response: 192150076
 Conc: 72.90 ug/ml



#8 DICHLORPROP
 R.T.: 8.070 min
 Delta R.T.: -0.002 min
 Response: 1000913009
 Conc: 719.56 ng/ml



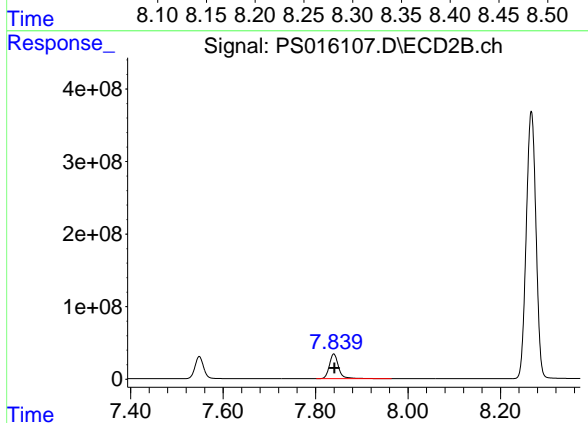
#8 DICHLORPROP
 R.T.: 7.548 min
 Delta R.T.: -0.002 min
 Response: 394252306
 Conc: 748.70 ng/ml



#9 2,4-D

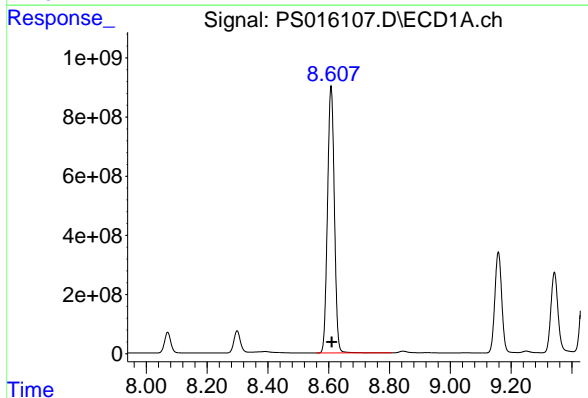
R.T.: 8.299 min
 Delta R.T.: -0.001 min
 Response: 1133516354
 Conc: 707.10 ng/ml

Instrument :
 ECD_S
 ClientSampled :



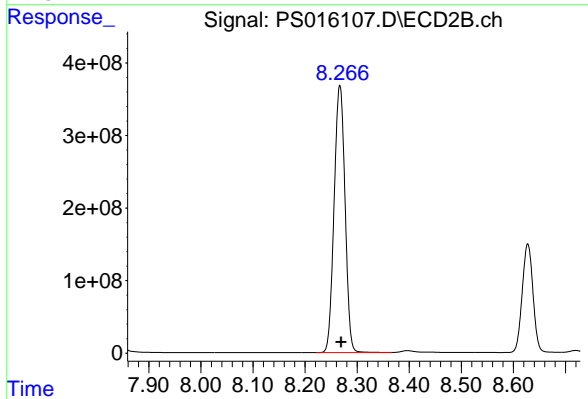
#9 2,4-D

R.T.: 7.840 min
 Delta R.T.: -0.001 min
 Response: 468723008
 Conc: 743.28 ng/ml



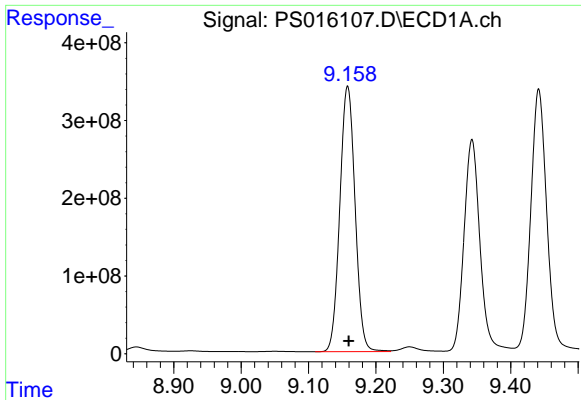
#10 Pentachlorophenol

R.T.: 8.608 min
 Delta R.T.: -0.002 min
 Response: 14123242242
 Conc: 712.69 ng/ml



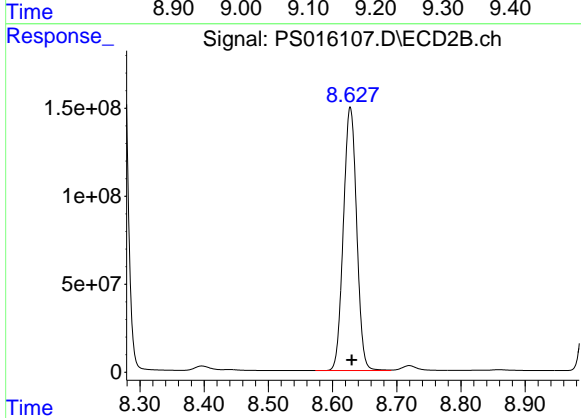
#10 Pentachlorophenol

R.T.: 8.267 min
 Delta R.T.: -0.002 min
 Response: 5365561087
 Conc: 745.91 ng/ml

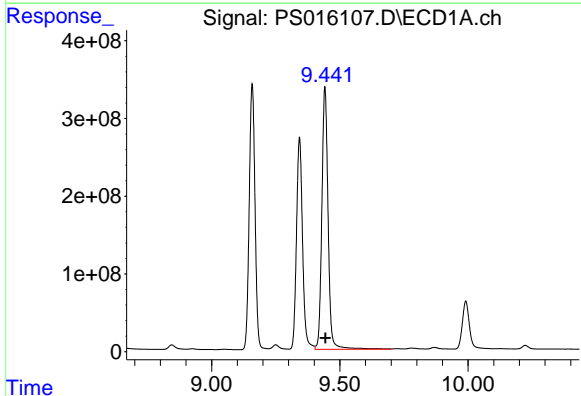


#11 2,4,5-TP (SILVEX)
 R.T.: 9.158 min
 Delta R.T.: -0.002 min
 Response: 5363915321
 Conc: 722.87 ng/ml

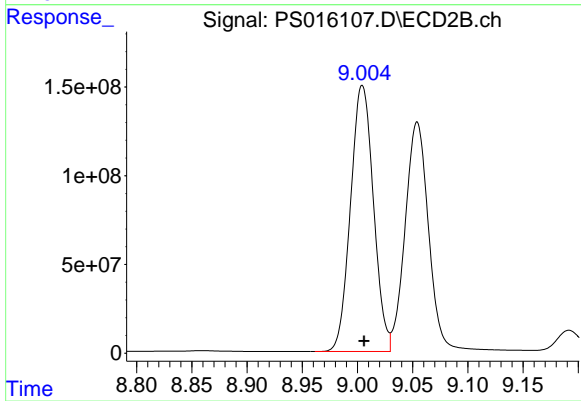
Instrument :
 ECD_S
 ClientSampleId :



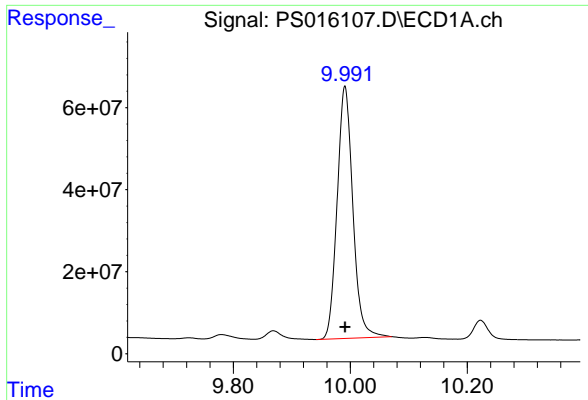
#11 2,4,5-TP (SILVEX)
 R.T.: 8.628 min
 Delta R.T.: -0.002 min
 Response: 2151558979
 Conc: 762.54 ng/ml



#12 2,4,5-T
 R.T.: 9.442 min
 Delta R.T.: -0.002 min
 Response: 5704576921
 Conc: 730.54 ng/ml

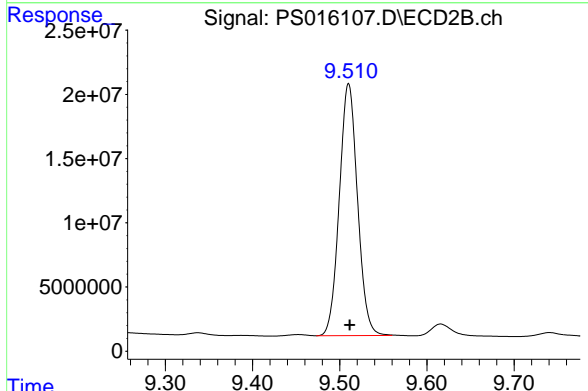


#12 2,4,5-T
 R.T.: 9.004 min
 Delta R.T.: -0.001 min
 Response: 2167240212
 Conc: 751.28 ng/ml

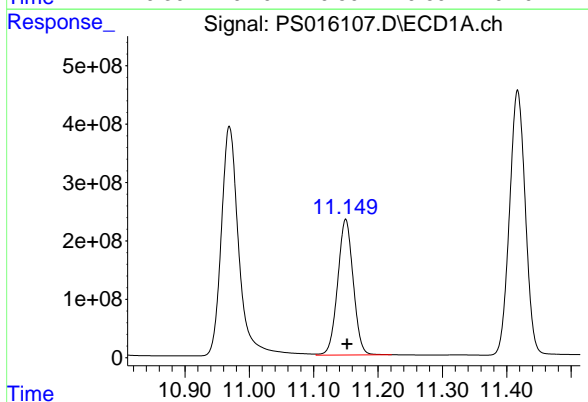


#13 2,4-DB
 R.T.: 9.991 min
 Delta R.T.: 0.000 min
 Response: 1147192924
 Conc: 690.63 ng/ml

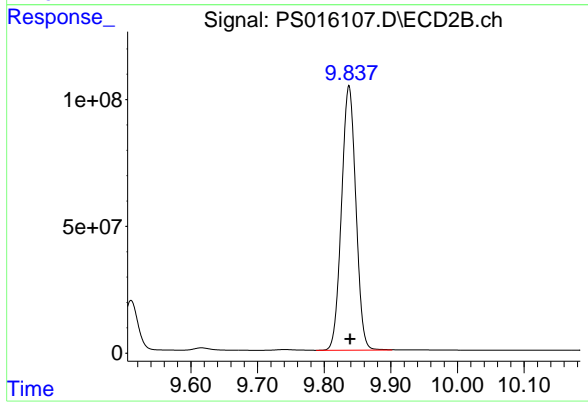
Instrument :
 ECD_S
 ClientSampled :



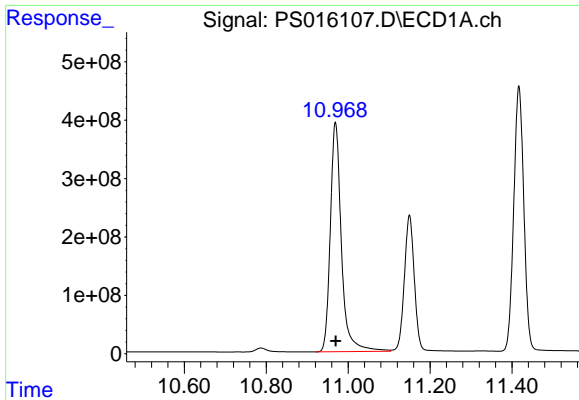
#13 2,4-DB
 R.T.: 9.510 min
 Delta R.T.: -0.001 min
 Response: 284642766
 Conc: 757.15 ng/ml



#14 DINOSEB
 R.T.: 11.150 min
 Delta R.T.: -0.002 min
 Response: 3895448350
 Conc: 710.56 ng/ml

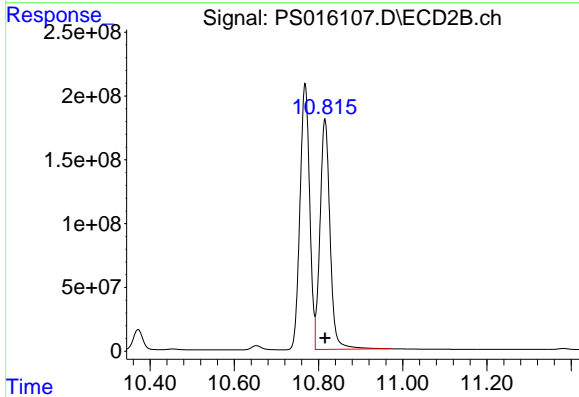


#14 DINOSEB
 R.T.: 9.837 min
 Delta R.T.: -0.002 min
 Response: 1558980464
 Conc: 763.53 ng/ml

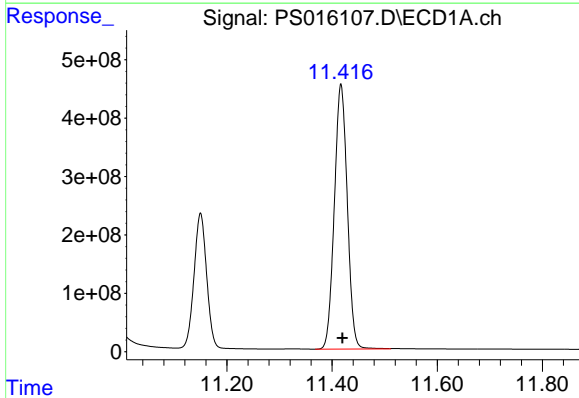


#15 Picloram
 R.T.: 10.969 min
 Delta R.T.: -0.001 min
 Response: 7411020367
 Conc: 673.72 ng/ml

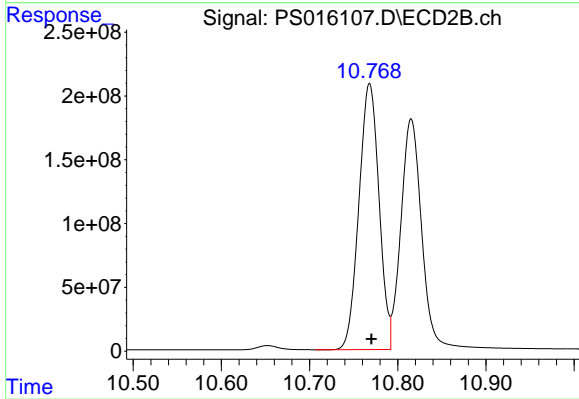
Instrument :
 ECD_S
 ClientSampled :



#15 Picloram
 R.T.: 10.815 min
 Delta R.T.: 0.000 min
 Response: 2977801730
 Conc: 715.72 ng/ml



#16 DCPA
 R.T.: 11.417 min
 Delta R.T.: -0.003 min
 Response: 7749182877
 Conc: 718.40 ng/ml



#16 DCPA
 R.T.: 10.768 min
 Delta R.T.: -0.002 min
 Response: 3296631108
 Conc: 766.58 ng/ml