

Data Path : Z:\pestpcbsrv\HPCHEM1\ECD\_S\Data\PS071425\  
 Data File : PS031020.D  
 Signal(s) : Signal #1: ECD1A.ch Signal #2: ECD2B.ch  
 Acq On : 14 Jul 2025 11:08  
 Operator : AR\AJ  
 Sample : HEXANE  
 Misc :  
 ALS Vial : 1 Sample Multiplier: 1

Instrument :  
 ECD\_S  
 ClientSampleId :  
 HEXANE

Integration File signal 1: autoint1.e  
 Integration File signal 2: autoint2.e  
 Quant Time: Jul 15 01:30:09 2025  
 Quant Method : Z:\pestpcbsrv\HPCHEM1\ECD\_S\Method\PS071125.M  
 Quant Title : 8080.M  
 QLast Update : Mon Jul 14 05:51:06 2025  
 Response via : Initial Calibration  
 Integrator: ChemStation

Volume Inj. : 1 µl  
 Signal #1 Phase : ZB-MR2 Signal #2 Phase: ZB-MR2  
 Signal #1 Info : 30M x 0.32mm x0.5 Signal #2 Info : 30M x 0.32mm x 0.25µm

	Compound	RT#1	RT#2	Resp#1	Resp#2	ng/ml	ng/ml
-----							
System Monitoring Compounds							
4) S	2,4-DCAA	7.338	7.757	5018766	8892884	1.269	8.584 #
Target Compounds							
2) T	3,5-DICHL...	6.482	6.740f	12130822	642343	2.316	<MDL #
3) T	4-Nitroph...	7.151	0.000	1482839	0	1.098	N.D. #
5) T	DICAMBA	7.501	7.987	2846637	5538562	<MDL	<MDL #
6) T	MCPP	7.657f	8.086	902073	955861	<MDL	<MDL #
7) T	MCPA	7.859	0.000	7007752	0	<MDL	N.D. #
8) T	DICHLORPROP	8.237	0.000	1101975	0	<MDL	N.D. #
9) T	2,4-D	8.457	0.000	176.6E6	0	57.361	N.D. #
10) T	Pentachlo...	8.776	0.000	1375474	0	<MDL	N.D. #
11) T	2,4,5-TP ...	9.370	0.000	282022	0	<MDL	N.D. #
12) T	2,4,5-T	9.648	10.347	720541	1786178	<MDL	<MDL #
13) T	2,4-DB	10.230	10.948	268458	5963554	<MDL	5.040 #
14) T	DINOSEB	11.446	0.000	1194843	0	<MDL	N.D. #
15) T	Picloram	11.256	12.418	29745745	30997601	2.041	1.320 #
16) T	DCPA	11.739	0.000	2096187	0	<MDL	N.D. #

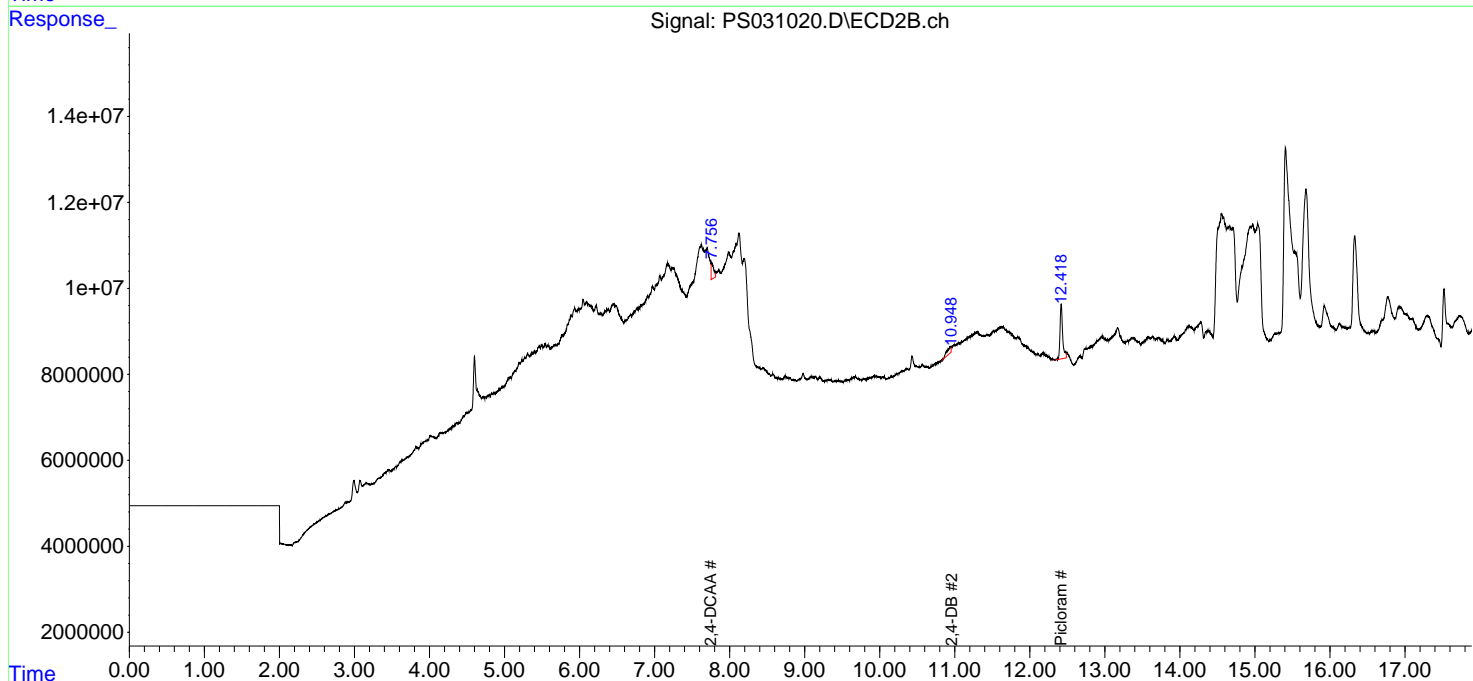
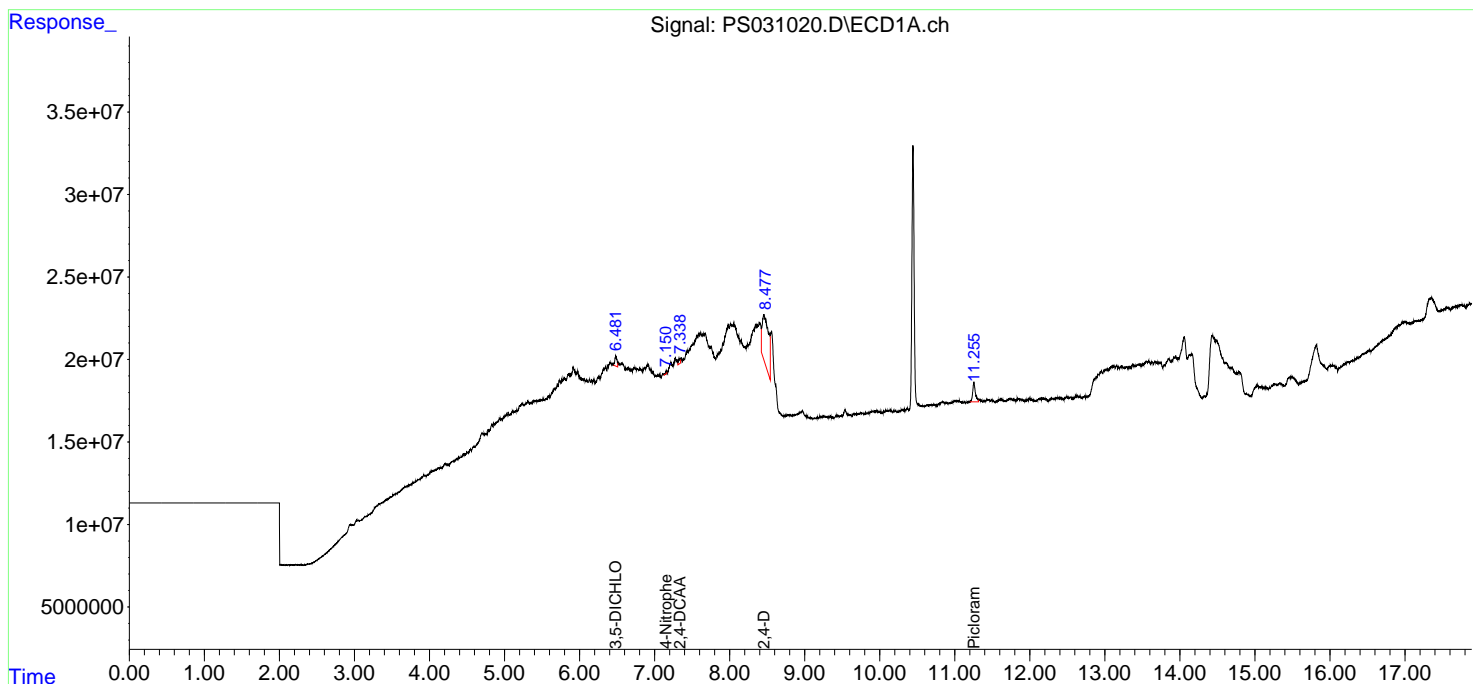
(f)=RT Delta > 1/2 Window (#)=Amounts differ by > 25% (m)=manual int.

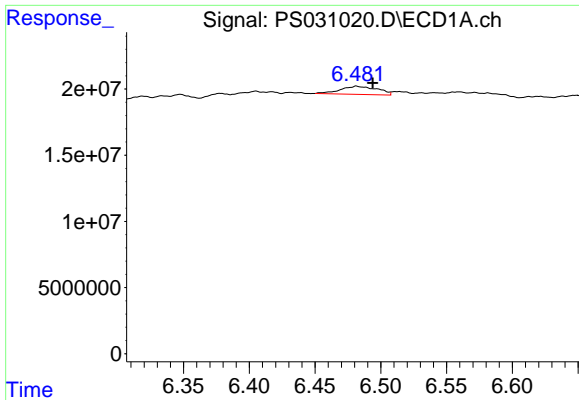
Data Path : Z:\pestpcbsrv\HPCHEM1\ECD\_S\Data\PS071425\  
 Data File : PS031020.D  
 Signal(s) : Signal #1: ECD1A.ch Signal #2: ECD2B.ch  
 Acq On : 14 Jul 2025 11:08  
 Operator : AR\AJ  
 Sample : HEXANE  
 Misc :  
 ALS Vial : 1 Sample Multiplier: 1

Instrument :  
 ECD\_S  
 ClientSampleId :  
 HEXANE

Integration File signal 1: autoint1.e  
 Integration File signal 2: autoint2.e  
 Quant Time: Jul 15 01:30:09 2025  
 Quant Method : Z:\pestpcbsrv\HPCHEM1\ECD\_S\Method\PS071125.M  
 Quant Title : 8080.M  
 QLast Update : Mon Jul 14 05:51:06 2025  
 Response via : Initial Calibration  
 Integrator: ChemStation

Volume Inj. : 1 µl  
 Signal #1 Phase : ZB-MR1 Signal #2 Phase: ZB-MR2  
 Signal #1 Info : 30M x 0.32mm x0.5 Signal #2 Info : 30M x 0.32mm x 0.25µm

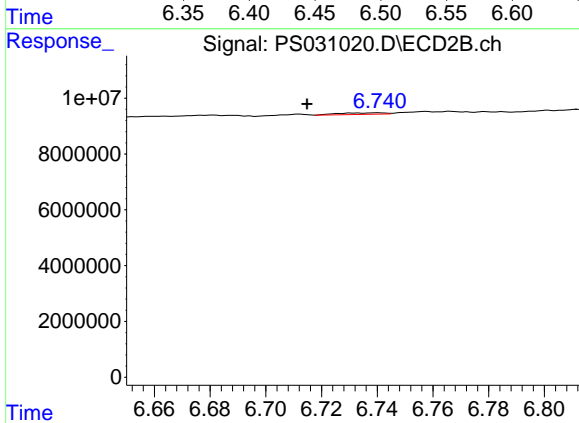




#2 3,5-DICHLORO BENZOIC ACID

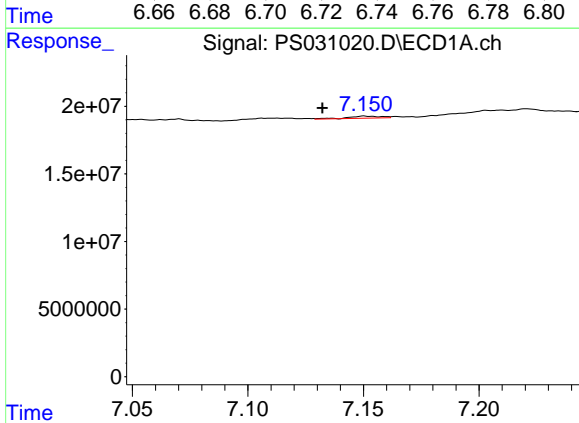
R.T.: 6.482 min  
 Delta R.T.: -0.012 min  
 Response: 12130822  
 Conc: 2.32 ng/ml

Instrument :  
 ECD\_S  
 ClientSampleId :  
 HEXANE



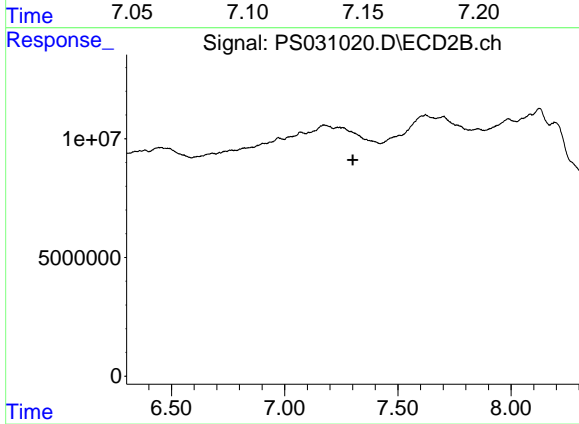
#2 3,5-DICHLORO BENZOIC ACID

R.T.: 6.740 min  
 Delta R.T.: 0.025 min  
 Response: 642343  
 Conc: N.D.



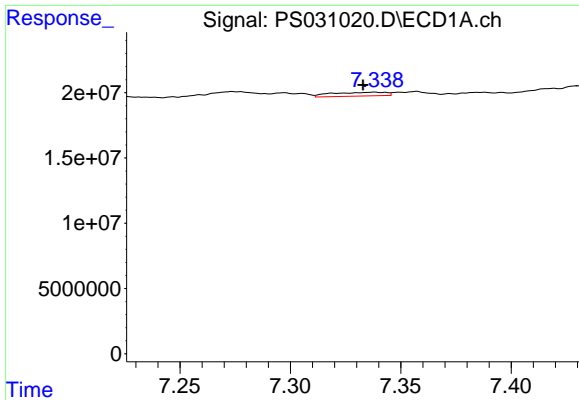
#3 4-Nitrophenol

R.T.: 7.151 min  
 Delta R.T.: 0.018 min  
 Response: 1482839  
 Conc: 1.10 ng/ml



#3 4-Nitrophenol

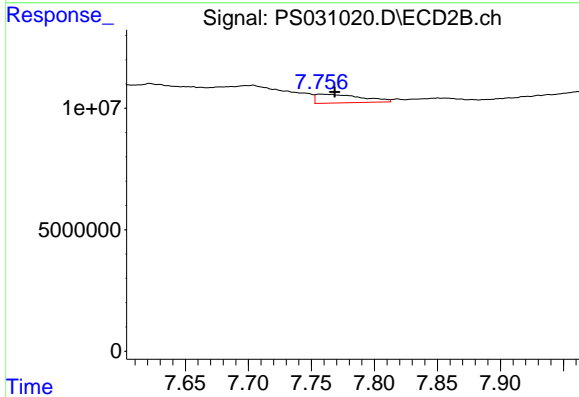
R.T.: 0.000 min  
 Exp R.T.: 7.301 min  
 Response: 0  
 Conc: N.D.



#4 2,4-DCAA

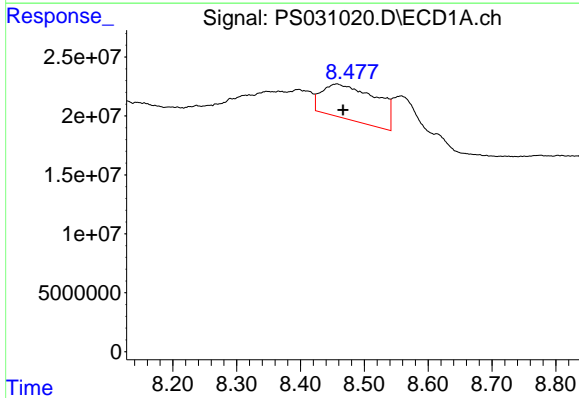
R.T.: 7.338 min  
 Delta R.T.: 0.005 min  
 Response: 5018766  
 Conc: 1.27 ng/ml

Instrument :  
 ECD\_S  
 ClientSampleId :  
 HEXANE



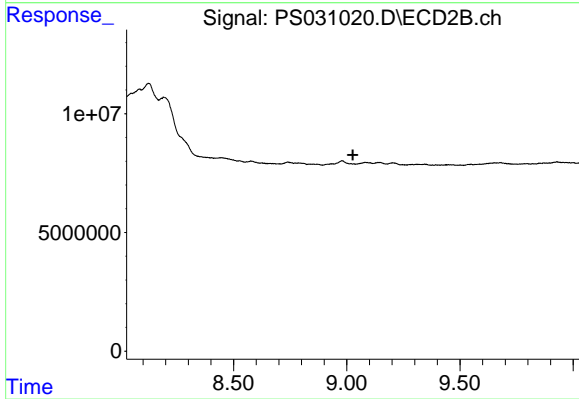
#4 2,4-DCAA

R.T.: 7.757 min  
 Delta R.T.: -0.011 min  
 Response: 8892884  
 Conc: 8.58 ng/ml



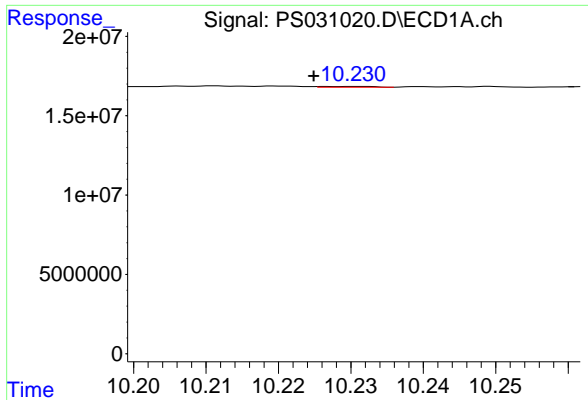
#9 2,4-D

R.T.: 8.457 min  
 Delta R.T.: -0.010 min  
 Response: 176583589  
 Conc: 57.36 ng/ml



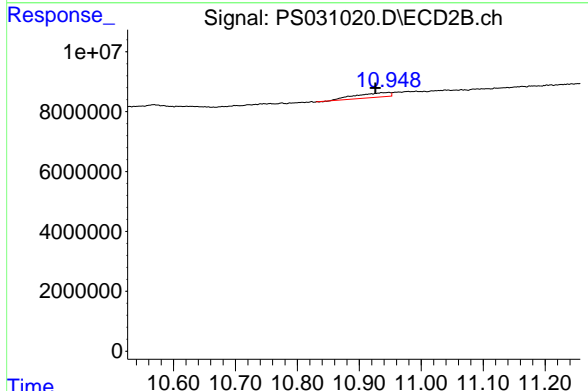
#9 2,4-D

R.T.: 0.000 min  
 Exp R.T.: 9.027 min  
 Response: 0  
 Conc: N.D.

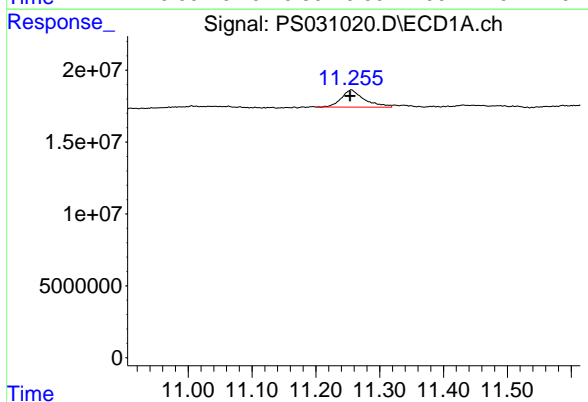


#13 2,4-DB  
 R.T.: 10.230 min  
 Delta R.T.: 0.006 min  
 Response: 268458  
 Conc: N.D.

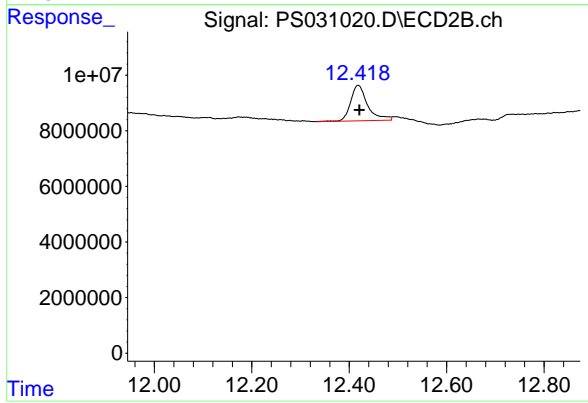
Instrument : ECD\_S  
 ClientSampleId : HEXANE



#13 2,4-DB  
 R.T.: 10.948 min  
 Delta R.T.: 0.022 min  
 Response: 5963554  
 Conc: 5.04 ng/ml



#15 Picloram  
 R.T.: 11.256 min  
 Delta R.T.: 0.002 min  
 Response: 29745745  
 Conc: 2.04 ng/ml



#15 Picloram  
 R.T.: 12.418 min  
 Delta R.T.: -0.003 min  
 Response: 30997601  
 Conc: 1.32 ng/ml