

Data Path : Z:\pestpcbsrv\HPCHEM1\ECD_S\Data\PS071425\
 Data File : PS031021.D
 Signal(s) : Signal #1: ECD1A.ch Signal #2: ECD2B.ch
 Acq On : 14 Jul 2025 12:17
 Operator : AR\AJ
 Sample : I.BLK
 Misc :
 ALS Vial : 2 Sample Multiplier: 1

Instrument :
 ECD_S
 ClientSampleId :
 I.BLK

Integration File signal 1: autoint1.e
 Integration File signal 2: autoint2.e
 Quant Time: Jul 15 01:30:19 2025
 Quant Method : Z:\pestpcbsrv\HPCHEM1\ECD_S\Method\PS071125.M
 Quant Title : 8080.M
 QLast Update : Mon Jul 14 05:51:06 2025
 Response via : Initial Calibration
 Integrator: ChemStation

Volume Inj. : 1 µl
 Signal #1 Phase : ZB-MR2 Signal #2 Phase: ZB-MR2
 Signal #1 Info : 30M x 0.32mm x0.5 Signal #2 Info : 30M x 0.32mm x 0.25µm

Compound	RT#1	RT#2	Resp#1	Resp#2	ng/ml	ng/ml

System Monitoring Compounds						
4) S 2,4-DCAA	7.332	7.764	1817.2E6	507.9E6	459.461	490.220
Target Compounds						
1) T Dalapon	0.000	2.746f	0	14198245	N.D.	4.994
2) T 3,5-DICHL...	6.486	0.000	12136530	0	2.317	N.D. #
3) T 4-Nitroph...	7.127	0.000	10776616	0	7.983	N.D. #
5) T DICAMBA	7.520	7.971	955810	3735628	<MDL	<MDL #
7) T MCPA	7.884f	0.000	2857206	0	<MDL	N.D. #
10) T Pentachlo...	8.772	9.544	7849132	23358128	<MDL	<MDL #
11) T 2,4,5-TP ...	9.353	9.930	4733285	11445739	<MDL	<MDL #
12) T 2,4,5-T	9.651	10.312f	5643594	8617628	<MDL	<MDL #
13) T 2,4-DB	10.216	0.000	1023847	0	<MDL	N.D. #
14) T DINOSEB	11.442	0.000	2989184	0	<MDL	N.D. #
15) T Picloram	11.276	12.431	22396901	25503880	1.537	1.086 #
16) T DCPA	11.737	12.353	7631525	2519051	<MDL	<MDL #

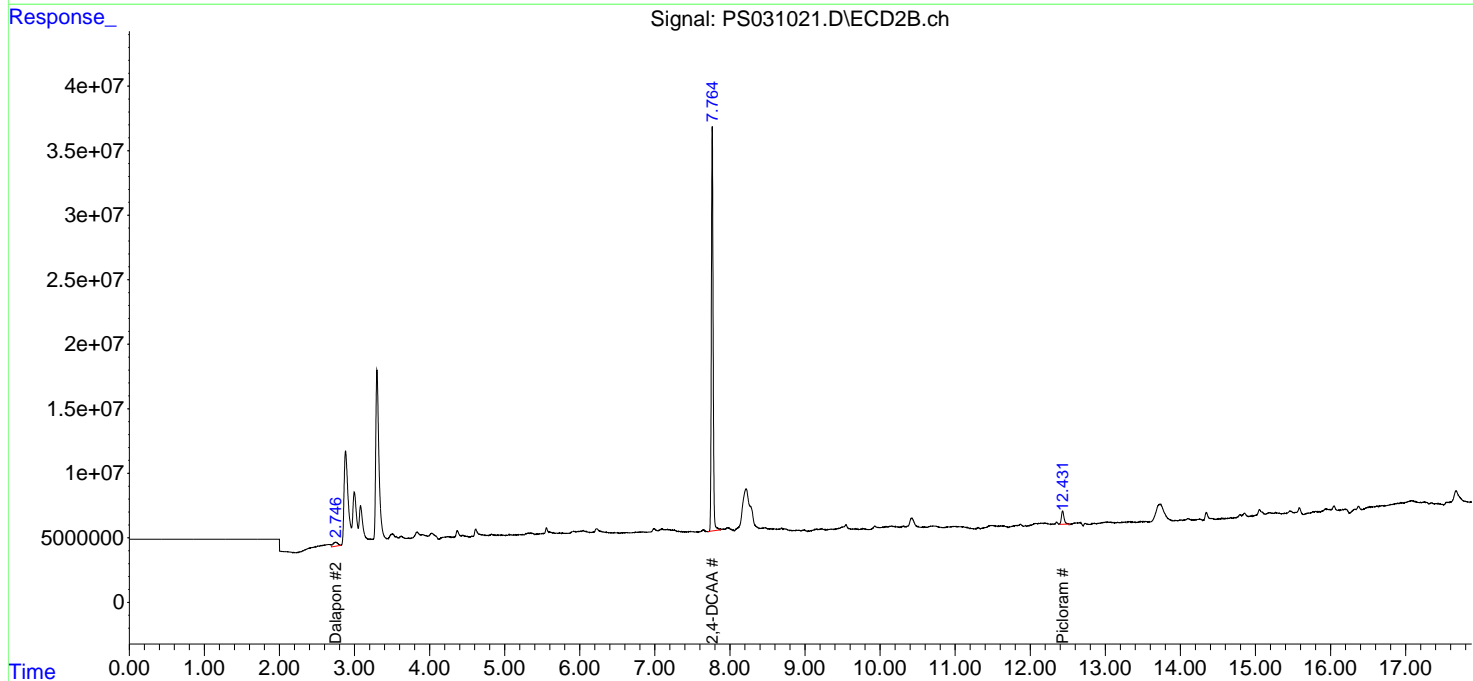
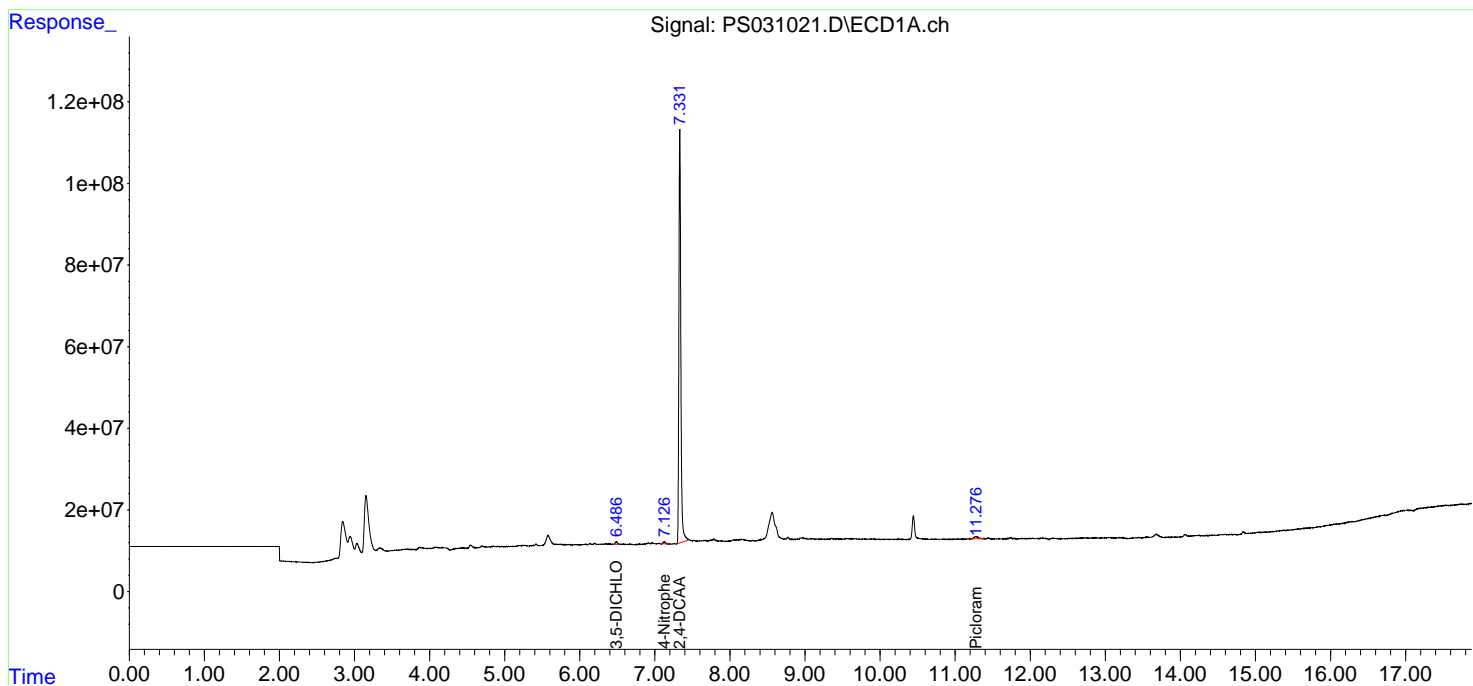
(f)=RT Delta > 1/2 Window (#)=Amounts differ by > 25% (m)=manual int.

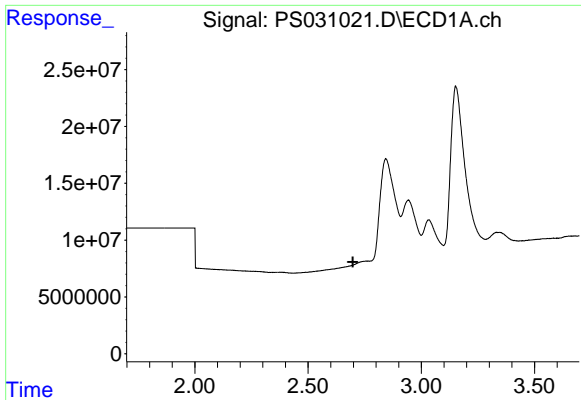
Data Path : Z:\pestpcbsrv\HPCHEM1\ECD_S\Data\PS071425\
 Data File : PS031021.D
 Signal(s) : Signal #1: ECD1A.ch Signal #2: ECD2B.ch
 Acq On : 14 Jul 2025 12:17
 Operator : AR\AJ
 Sample : I.BLK
 Misc :
 ALS Vial : 2 Sample Multiplier: 1

Instrument :
 ECD_S
 ClientSampleId :
 I.BLK

Integration File signal 1: autoint1.e
 Integration File signal 2: autoint2.e
 Quant Time: Jul 15 01:30:19 2025
 Quant Method : Z:\pestpcbsrv\HPCHEM1\ECD_S\Method\PS071125.M
 Quant Title : 8080.M
 QLast Update : Mon Jul 14 05:51:06 2025
 Response via : Initial Calibration
 Integrator: ChemStation

Volume Inj. : 1 µl
 Signal #1 Phase : ZB-MR1 Signal #2 Phase: ZB-MR2
 Signal #1 Info : 30M x 0.32mm x0.5 Signal #2 Info : 30M x 0.32mm x 0.25µm

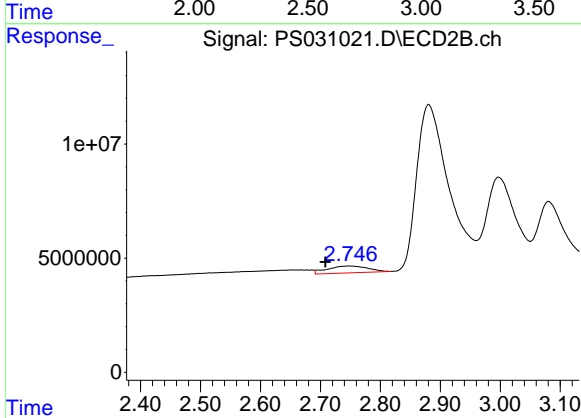




#1 Dalapon

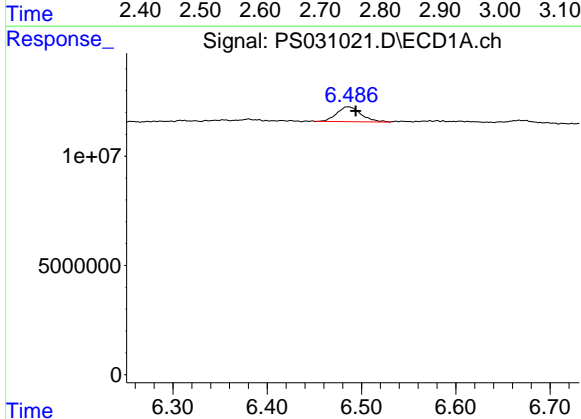
R.T.: 0.000 min
 Exp R.T.: 2.698 min
 Response: 0
 Conc: N.D.

Instrument : ECD_S
 ClientSampleId : I.BLK



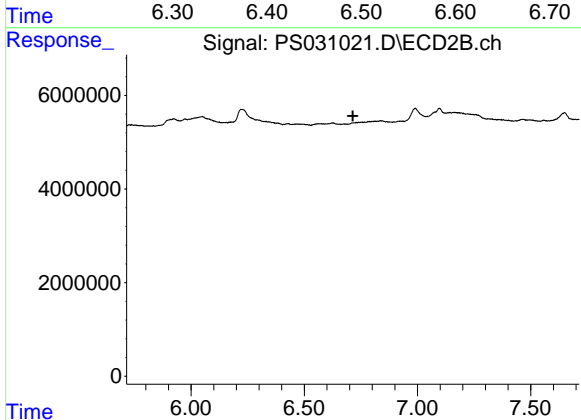
#1 Dalapon

R.T.: 2.746 min
 Delta R.T.: 0.038 min
 Response: 14198245
 Conc: 4.99 ng/ml



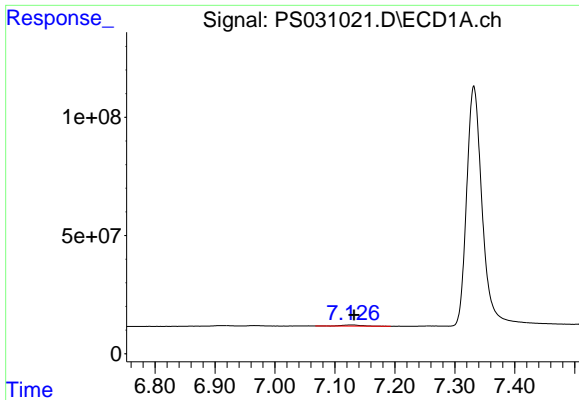
#2 3,5-DICHLOROBENZOIC ACID

R.T.: 6.486 min
 Delta R.T.: -0.008 min
 Response: 12136530
 Conc: 2.32 ng/ml



#2 3,5-DICHLOROBENZOIC ACID

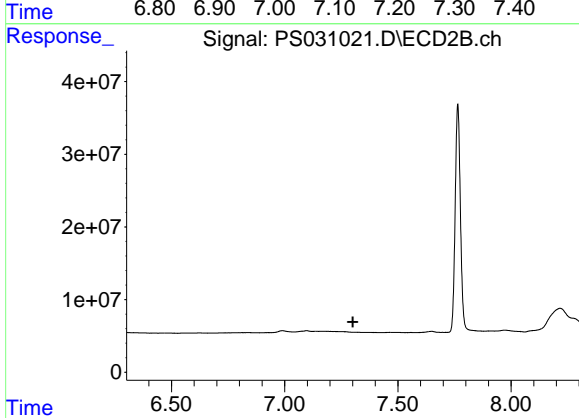
R.T.: 0.000 min
 Exp R.T.: 6.715 min
 Response: 0
 Conc: N.D.



#3 4-Nitrophenol

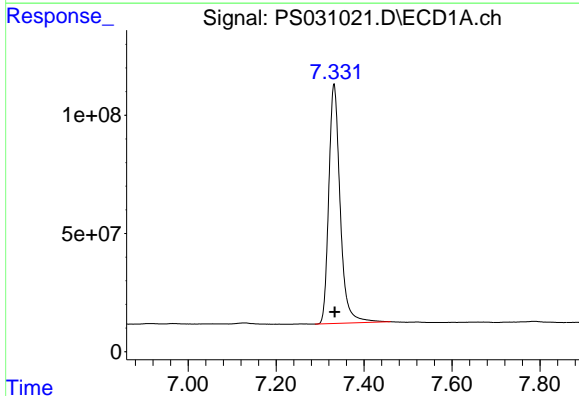
R.T.: 7.127 min
 Delta R.T.: -0.005 min
 Response: 10776616
 Conc: 7.98 ng/ml

Instrument :
 ECD_S
 ClientSampleId :
 I.BLK



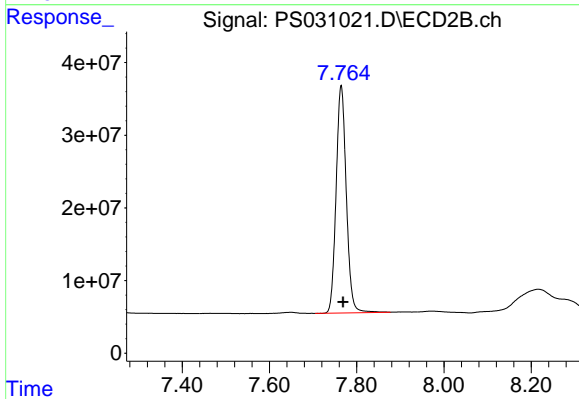
#3 4-Nitrophenol

R.T.: 0.000 min
 Exp R.T. : 7.301 min
 Response: 0
 Conc: N.D.



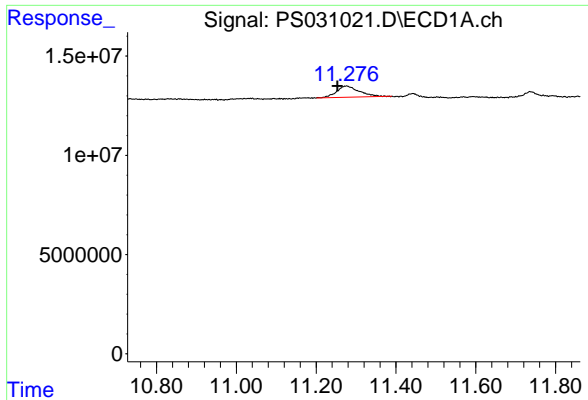
#4 2,4-DCAA

R.T.: 7.332 min
 Delta R.T.: -0.001 min
 Response: 1817202380
 Conc: 459.46 ng/ml



#4 2,4-DCAA

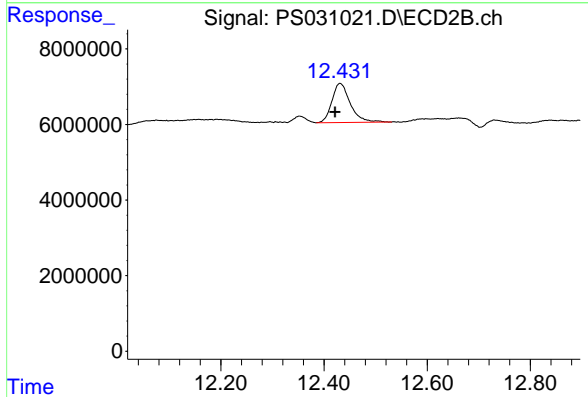
R.T.: 7.764 min
 Delta R.T.: -0.004 min
 Response: 507883570
 Conc: 490.22 ng/ml



#15 Picloram

R.T.: 11.276 min
Delta R.T.: 0.022 min
Response: 22396901
Conc: 1.54 ng/ml

Instrument :
ECD_S
ClientSampleId :
I.BLK



#15 Picloram

R.T.: 12.431 min
Delta R.T.: 0.010 min
Response: 25503880
Conc: 1.09 ng/ml