

Data Path : Z:\pestpcbsrv\HPCHEM1\ECD_S\Data\PS071425\
 Data File : PS031022.D
 Signal(s) : Signal #1: ECD1A.ch Signal #2: ECD2B.ch
 Acq On : 14 Jul 2025 16:07
 Operator : AR\AJ
 Sample : HSTDCCC750
 Misc :
 ALS Vial : 3 Sample Multiplier: 1

Instrument :
 ECD_S
 ClientSampleId :
 HSTDCCC750

Integration File signal 1: autoint1.e
 Integration File signal 2: autoint2.e
 Quant Time: Jul 15 01:30:29 2025
 Quant Method : Z:\pestpcbsrv\HPCHEM1\ECD_S\Method\PS071125.M
 Quant Title : 8080.M
 QLast Update : Mon Jul 14 05:51:06 2025
 Response via : Initial Calibration
 Integrator: ChemStation

Volume Inj. : 1 µl
 Signal #1 Phase : ZB-MR2 Signal #2 Phase: ZB-MR2
 Signal #1 Info : 30M x 0.32mm x0.5 Signal #2 Info : 30M x 0.32mm x 0.25µm

Compound	RT#1	RT#2	Resp#1	Resp#2	ng/ml	ng/ml

System Monitoring Compounds						
4) S 2,4-DCAA	7.333	7.764	2700.6E6	675.7E6	682.813	652.246
Target Compounds						
1) T Dalapon	2.691	2.697	3778.7E6	1612.4E6	620.303	567.184
2) T 3,5-DICHL...	6.493	6.710	3294.1E6	870.5E6	628.822	561.487
3) T 4-Nitroph...	7.133	7.296	947.7E6	997.5E6	702.009	572.016
5) T DICAMBA	7.523	7.966	9974.7E6	3745.1E6	635.698	578.263
6) T MCPP	7.703	8.064	583.6E6	118.1E6	63.422	55.229
7) T MCPA	7.854	8.313	696.6E6	176.4E6	63.865	55.020
8) T DICHLORPROP	8.235	8.686	2240.5E6	874.6E6	657.971	575.650
9) T 2,4-D	8.468	9.022	2261.8E6	987.2E6	734.729	580.861
10) T Pentachlo...	8.774	9.546	34549.5E6	23569.1E6	687.394	611.628
11) T 2,4,5-TP ...	9.354	9.927	13023.7E6	8799.1E6	699.794	599.568
12) T 2,4,5-T	9.649	10.354	11618.4E6	8416.4E6	763.702	601.520
13) T 2,4-DB	10.226	10.921	1775.3E6	694.0E6	817.791	586.516 #
14) T DINOSEB	11.441	11.306	9400.8E6	6670.2E6	713.051	587.601
15) T Picloram	11.254	12.416	12319.6E6	15013.7E6	845.431	639.406
16) T DCPA	11.738	12.350	17464.4E6	13742.6E6	729.595	609.376

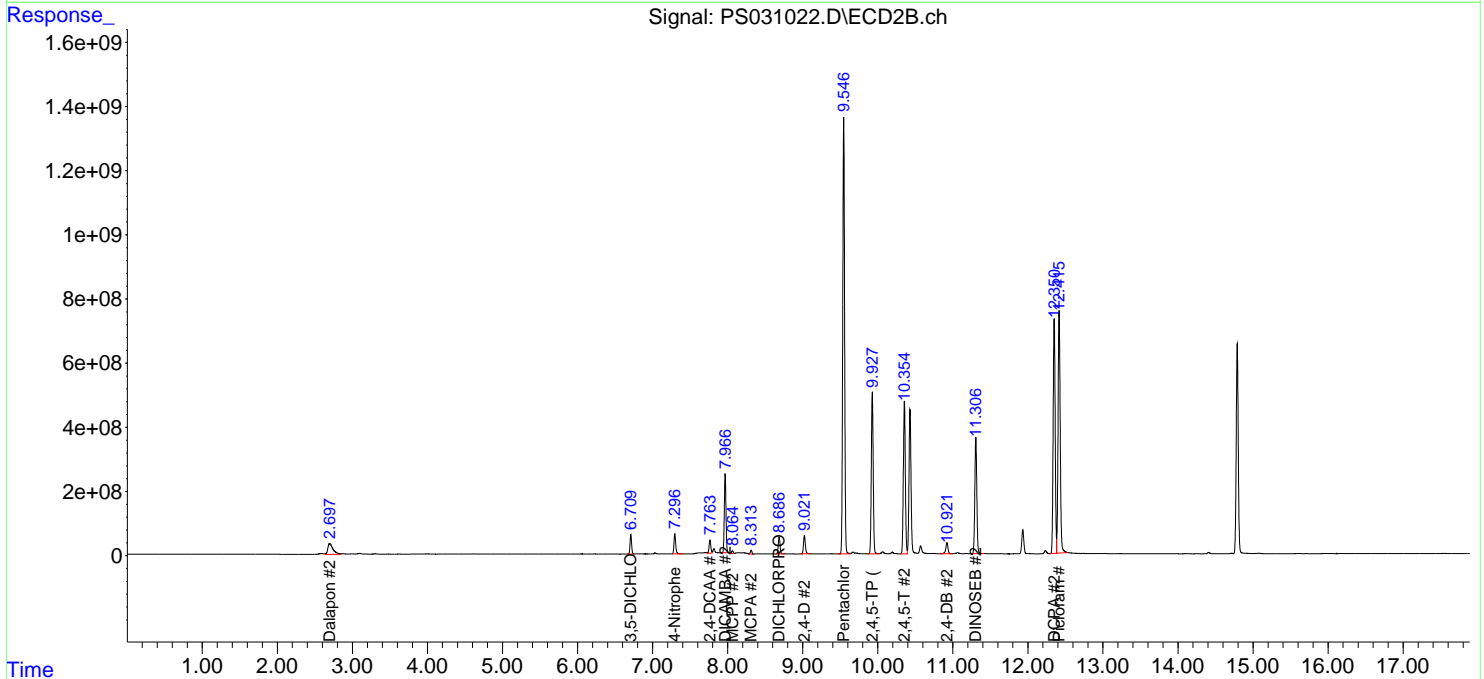
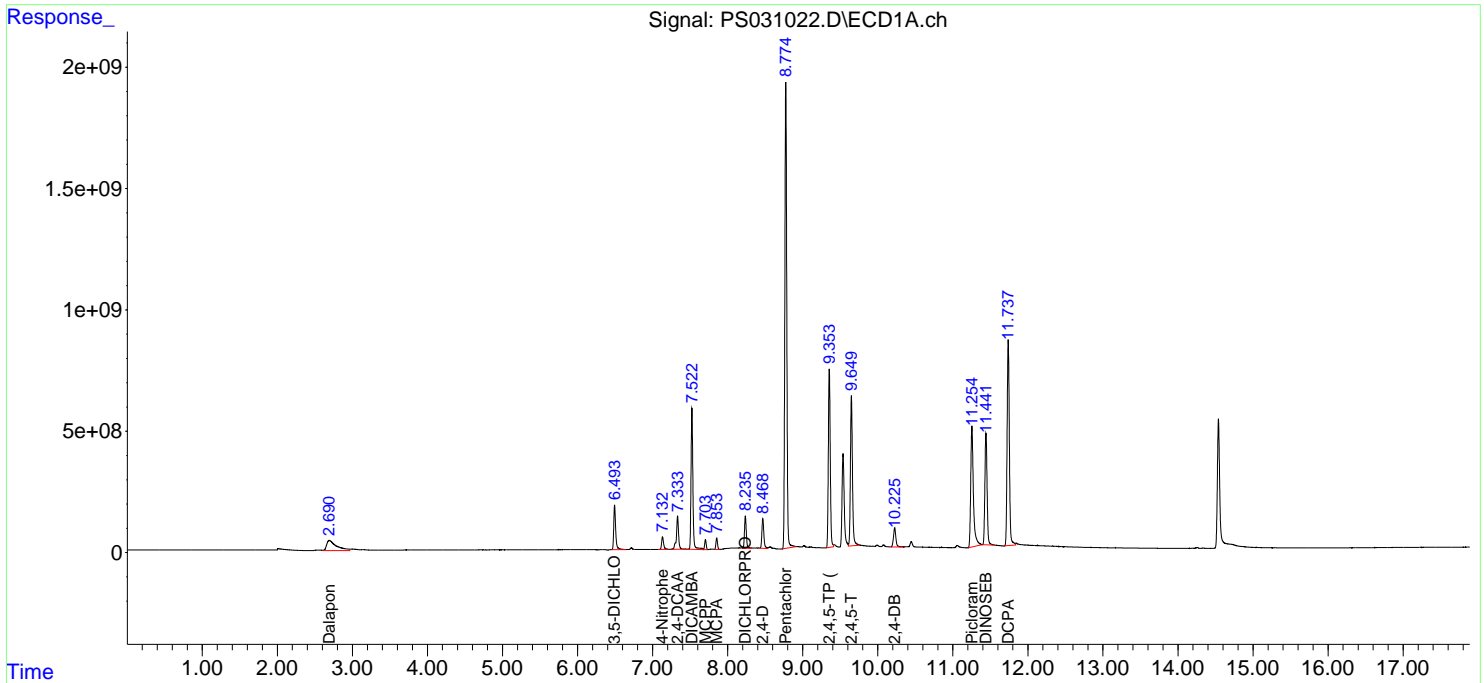
(f)=RT Delta > 1/2 Window (#)=Amounts differ by > 25% (m)=manual int.

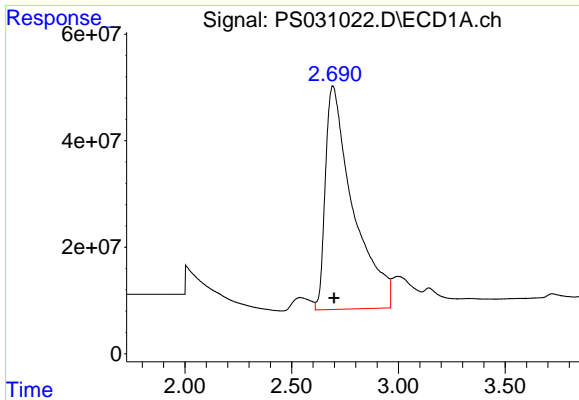
Data Path : Z:\pestpcbsrv\HPCHEM1\ECD_S\Data\PS071425\
 Data File : PS031022.D
 Signal(s) : Signal #1: ECD1A.ch Signal #2: ECD2B.ch
 Acq On : 14 Jul 2025 16:07
 Operator : AR\AJ
 Sample : HSTDCCC750
 Misc :
 ALS Vial : 3 Sample Multiplier: 1

Instrument :
 ECD_S
 ClientSampleId :
 HSTDCCC750

Integration File signal 1: autoint1.e
 Integration File signal 2: autoint2.e
 Quant Time: Jul 15 01:30:29 2025
 Quant Method : Z:\pestpcbsrv\HPCHEM1\ECD_S\Method\PS071125.M
 Quant Title : 8080.M
 QLast Update : Mon Jul 14 05:51:06 2025
 Response via : Initial Calibration
 Integrator: ChemStation

Volume Inj. : 1 µl
 Signal #1 Phase : ZB-MR1 Signal #2 Phase: ZB-MR2
 Signal #1 Info : 30M x 0.32mm x0.5 Signal #2 Info : 30M x 0.32mm x 0.25µm

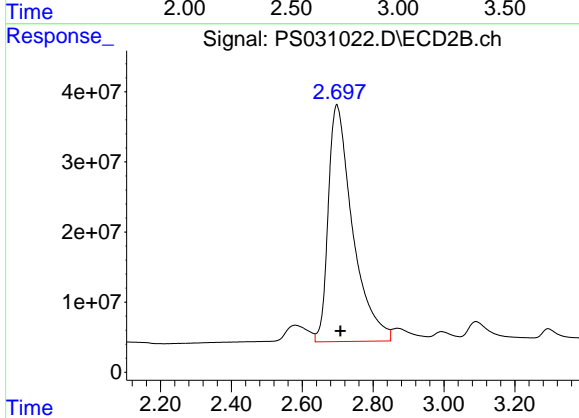




#1 Dalapon

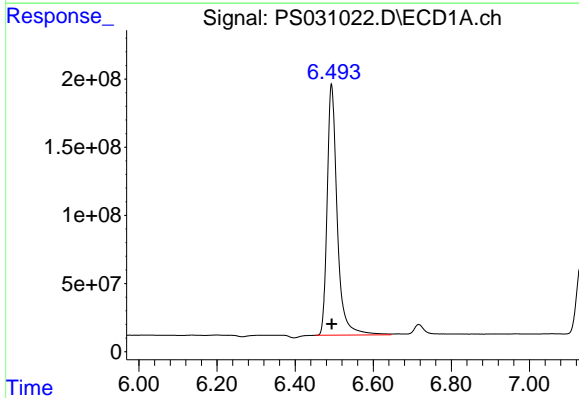
R.T.: 2.691 min
 Delta R.T.: -0.007 min
 Response: 3778715241
 Conc: 620.30 ng/ml

Instrument :
 ECD_S
 ClientSampleId :
 HSTDCCC750



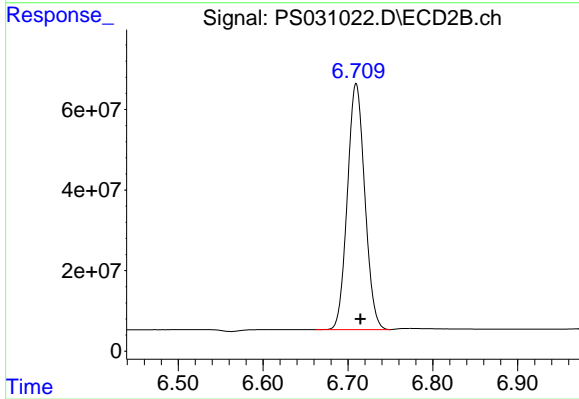
#1 Dalapon

R.T.: 2.697 min
 Delta R.T.: -0.011 min
 Response: 1612423315
 Conc: 567.18 ng/ml



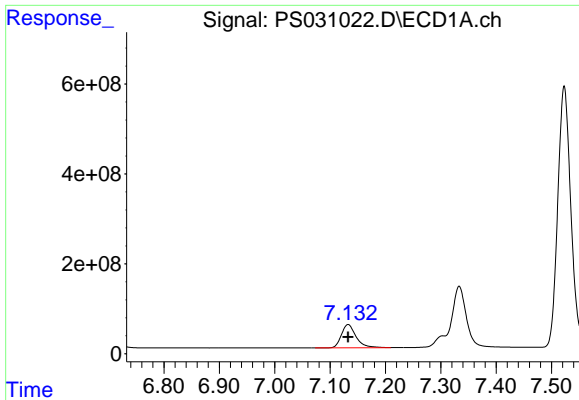
#2 3,5-DICHLOROBENZOIC ACID

R.T.: 6.493 min
 Delta R.T.: 0.000 min
 Response: 3294145456
 Conc: 628.82 ng/ml



#2 3,5-DICHLOROBENZOIC ACID

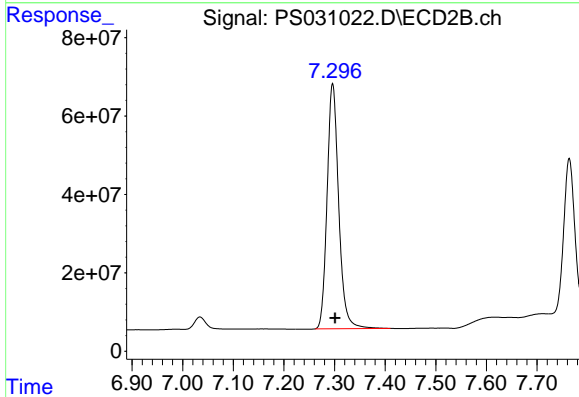
R.T.: 6.710 min
 Delta R.T.: -0.005 min
 Response: 870495021
 Conc: 561.49 ng/ml



#3 4-Nitrophenol

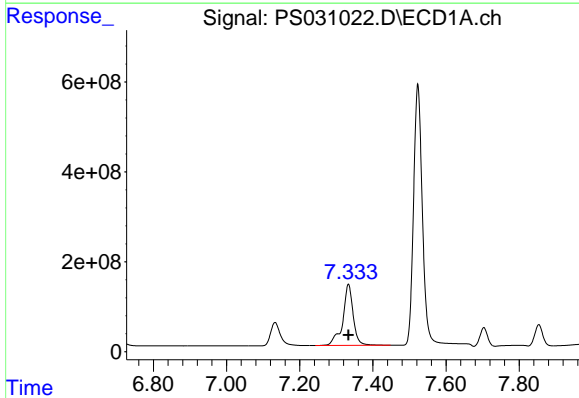
R.T.: 7.133 min
 Delta R.T.: 0.000 min
 Response: 947717832
 Conc: 702.01 ng/ml

Instrument :
 ECD_S
 ClientSampleId :
 HSTDCCC750



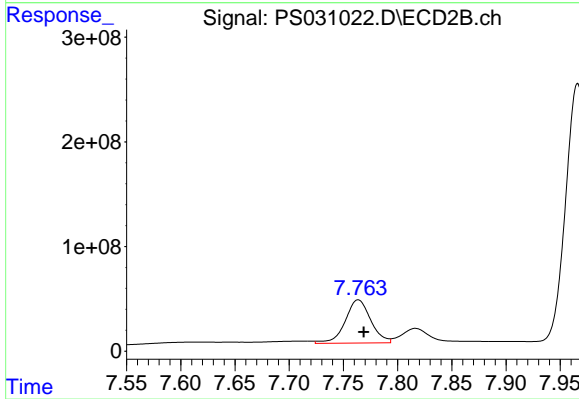
#3 4-Nitrophenol

R.T.: 7.296 min
 Delta R.T.: -0.005 min
 Response: 997531964
 Conc: 572.02 ng/ml



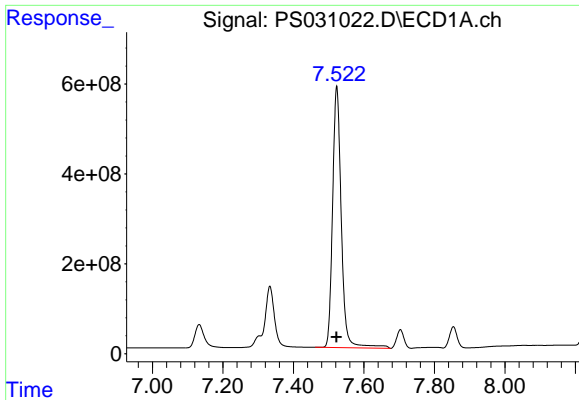
#4 2,4-DCAA

R.T.: 7.333 min
 Delta R.T.: 0.000 min
 Response: 2700575905
 Conc: 682.81 ng/ml



#4 2,4-DCAA

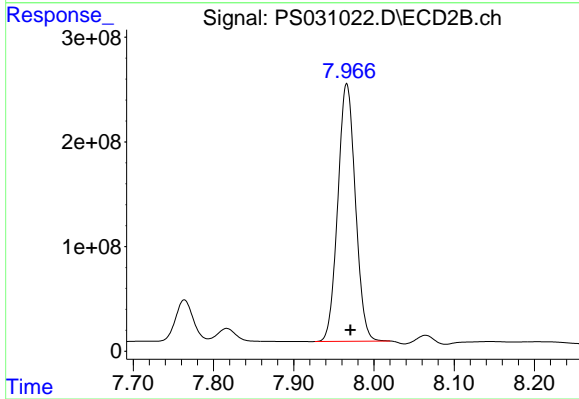
R.T.: 7.764 min
 Delta R.T.: -0.005 min
 Response: 675747784
 Conc: 652.25 ng/ml



#5 DICAMBA

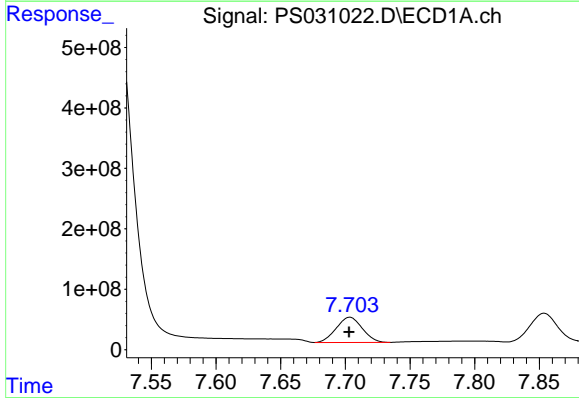
R.T.: 7.523 min
 Delta R.T.: 0.000 min
 Response: 9974675931
 Conc: 635.70 ng/ml

Instrument :
 ECD_S
 ClientSampleId :
 HSTDCCC750



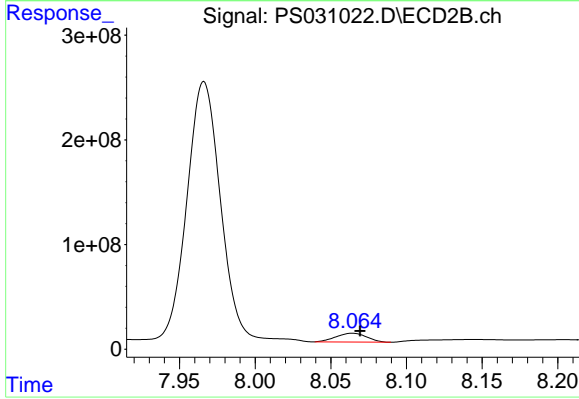
#5 DICAMBA

R.T.: 7.966 min
 Delta R.T.: -0.004 min
 Response: 3745074320
 Conc: 578.26 ng/ml



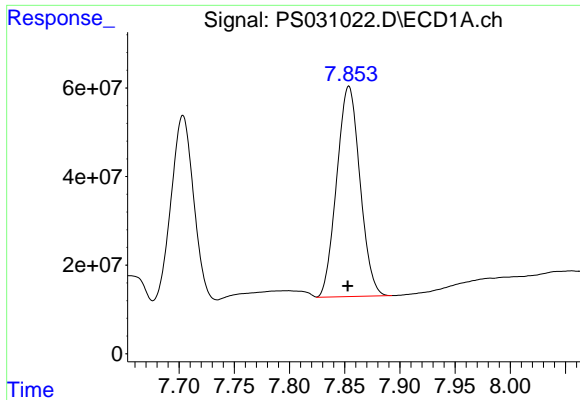
#6 MCP

R.T.: 7.703 min
 Delta R.T.: 0.000 min
 Response: 583559469
 Conc: 63.42 ug/ml



#6 MCP

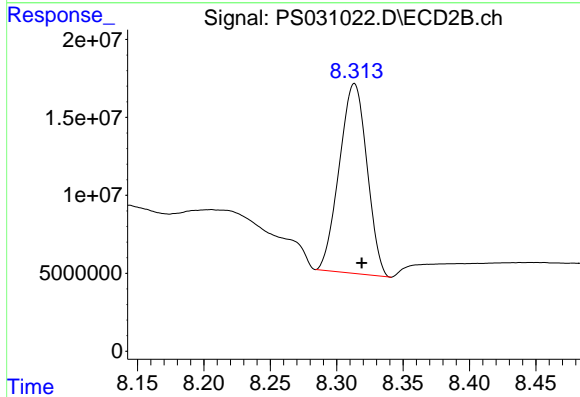
R.T.: 8.064 min
 Delta R.T.: -0.005 min
 Response: 118076428
 Conc: 55.23 ug/ml



#7 MCPA

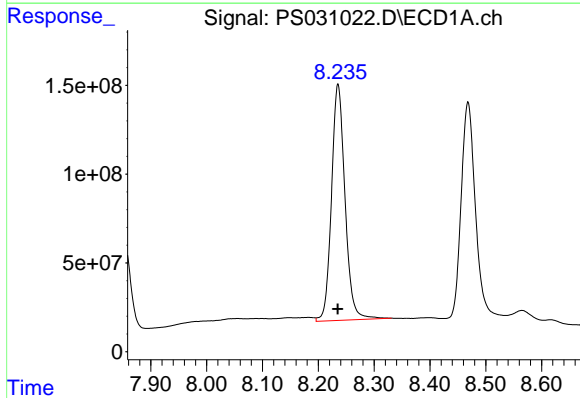
R.T.: 7.854 min
 Delta R.T.: 0.001 min
 Response: 696557394
 Conc: 63.86 ug/ml

Instrument :
 ECD_S
 ClientSampleId :
 HSTDCCC750



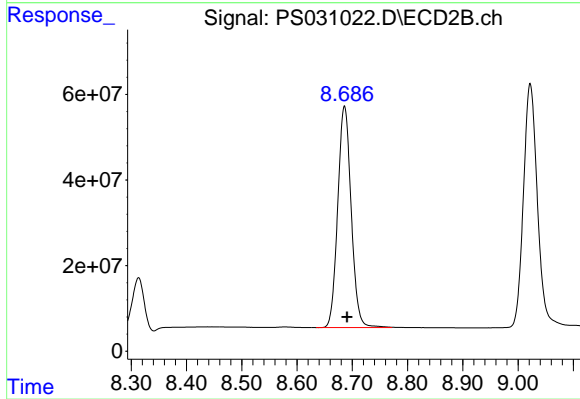
#7 MCPA

R.T.: 8.313 min
 Delta R.T.: -0.005 min
 Response: 176377004
 Conc: 55.02 ug/ml



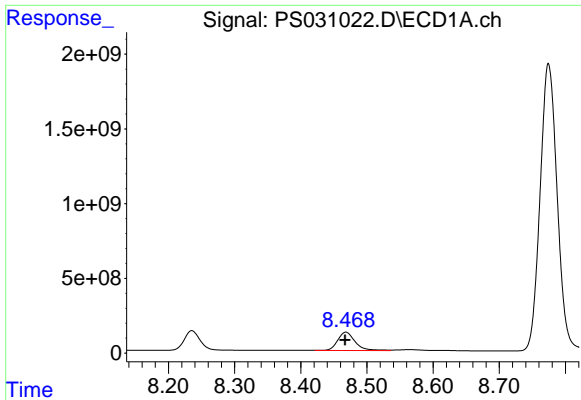
#8 DICHLORPROP

R.T.: 8.235 min
 Delta R.T.: 0.000 min
 Response: 2240494216
 Conc: 657.97 ng/ml



#8 DICHLORPROP

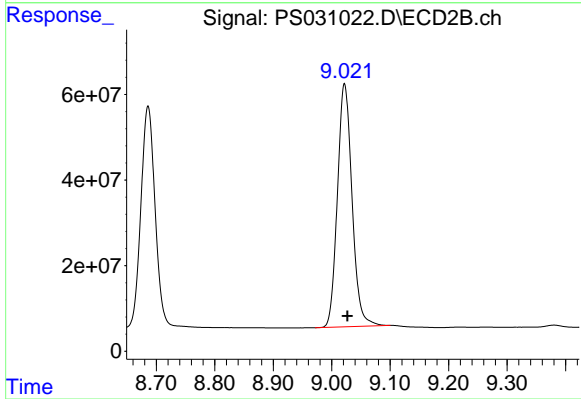
R.T.: 8.686 min
 Delta R.T.: -0.005 min
 Response: 874562032
 Conc: 575.65 ng/ml



#9 2,4-D

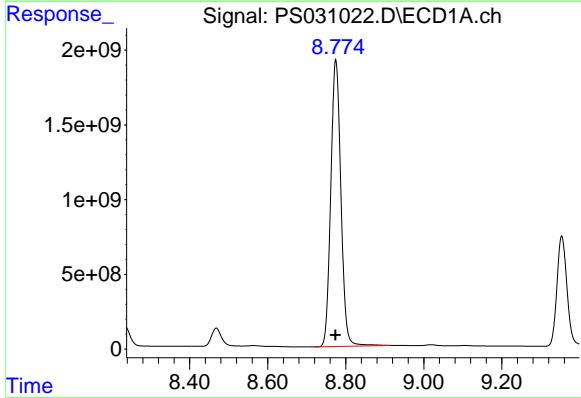
R.T.: 8.468 min
 Delta R.T.: 0.001 min
 Response: 2261815786
 Conc: 734.73 ng/ml

Instrument :
 ECD_S
 ClientSampleId :
 HSTDCCC750



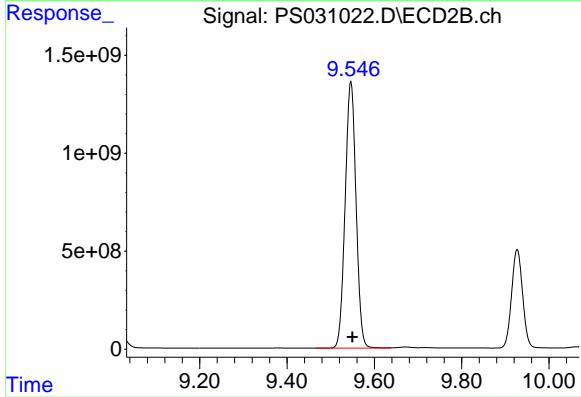
#9 2,4-D

R.T.: 9.022 min
 Delta R.T.: -0.005 min
 Response: 987153119
 Conc: 580.86 ng/ml



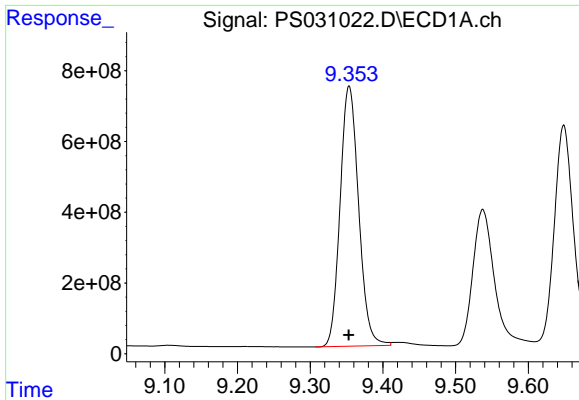
#10 Pentachlorophenol

R.T.: 8.774 min
 Delta R.T.: 0.001 min
 Response: 34549475442
 Conc: 687.39 ng/ml



#10 Pentachlorophenol

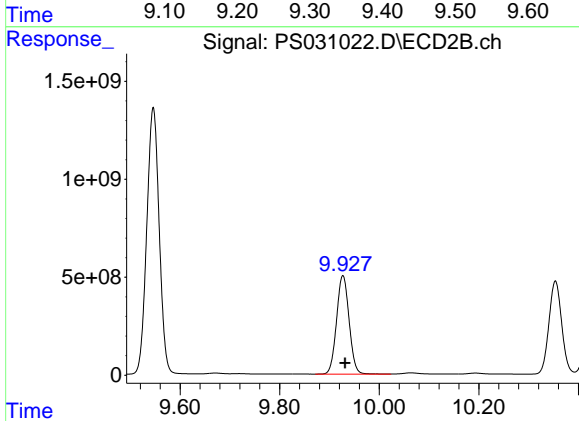
R.T.: 9.546 min
 Delta R.T.: -0.004 min
 Response: 23569120697
 Conc: 611.63 ng/ml



#11 2,4,5-TP (SILVEX)

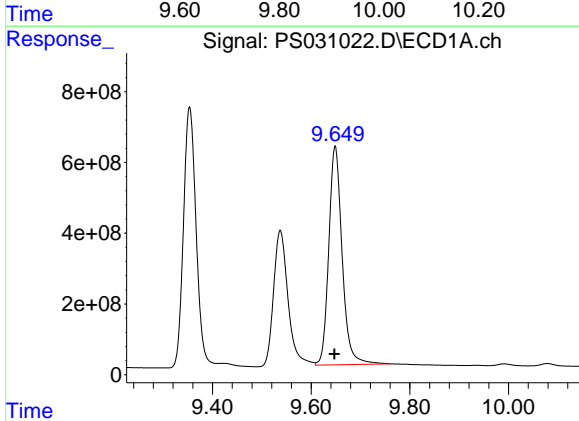
R.T.: 9.354 min
 Delta R.T.: 0.000 min
 Response: 13023678210
 Conc: 699.79 ng/ml

Instrument :
 ECD_S
 ClientSampleId :
 HSTDCCC750



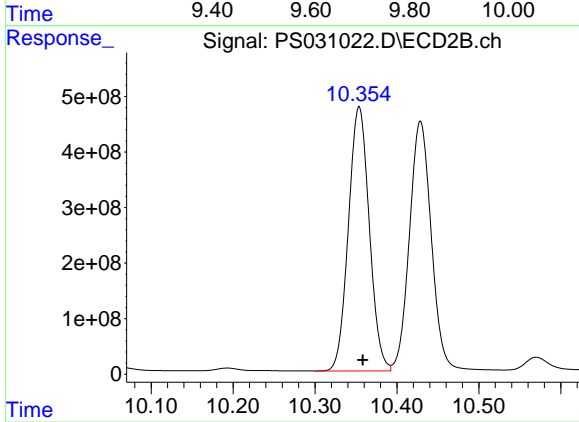
#11 2,4,5-TP (SILVEX)

R.T.: 9.927 min
 Delta R.T.: -0.005 min
 Response: 8799118292
 Conc: 599.57 ng/ml



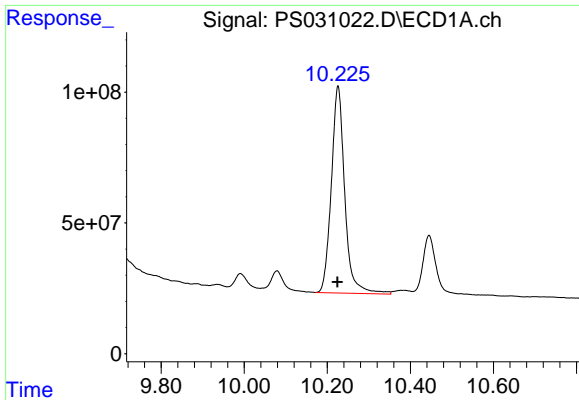
#12 2,4,5-T

R.T.: 9.649 min
 Delta R.T.: 0.002 min
 Response: 11618446976
 Conc: 763.70 ng/ml



#12 2,4,5-T

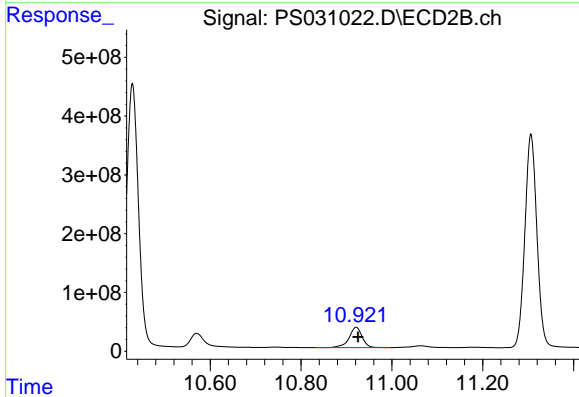
R.T.: 10.354 min
 Delta R.T.: -0.005 min
 Response: 8416355293
 Conc: 601.52 ng/ml



#13 2,4-DB

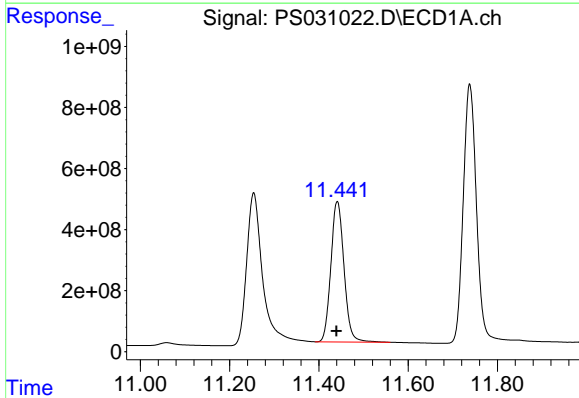
R.T.: 10.226 min
 Delta R.T.: 0.000 min
 Response: 1775252287
 Conc: 817.79 ng/ml

Instrument :
 ECD_S
 ClientSampleId :
 HSTDCCC750



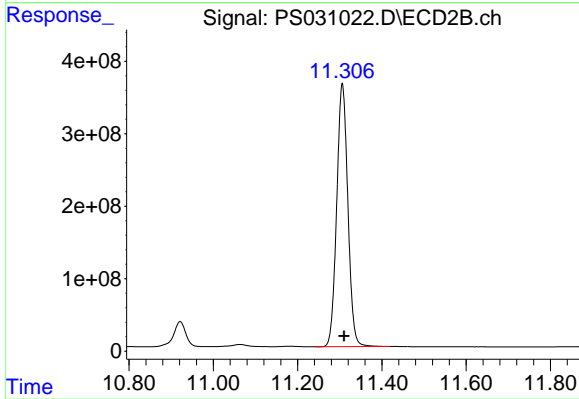
#13 2,4-DB

R.T.: 10.921 min
 Delta R.T.: -0.005 min
 Response: 693954923
 Conc: 586.52 ng/ml



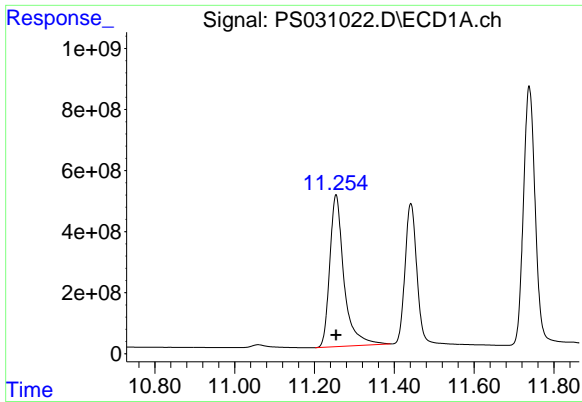
#14 DINOSEB

R.T.: 11.441 min
 Delta R.T.: 0.002 min
 Response: 9400789304
 Conc: 713.05 ng/ml



#14 DINOSEB

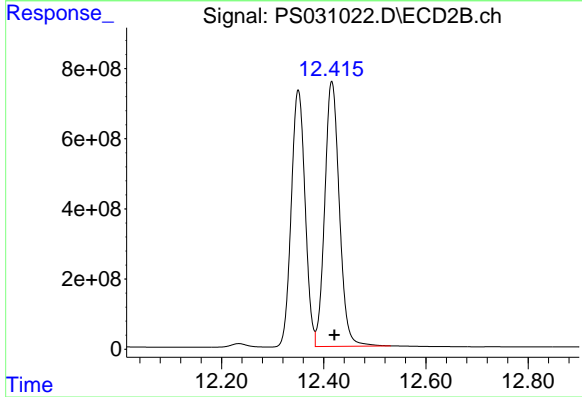
R.T.: 11.306 min
 Delta R.T.: -0.004 min
 Response: 6670163651
 Conc: 587.60 ng/ml



#15 Picloram

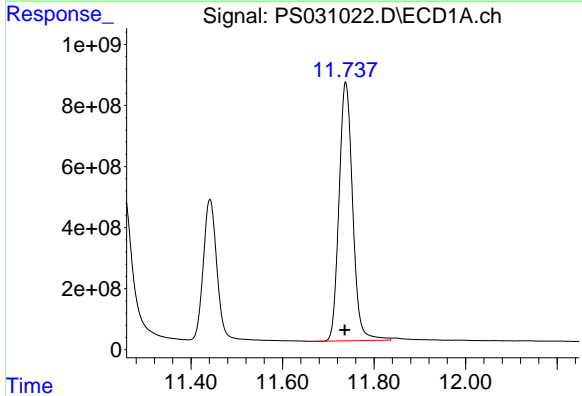
R.T.: 11.254 min
 Delta R.T.: 0.000 min
 Response: 12319571635
 Conc: 845.43 ng/ml

Instrument :
 ECD_S
 ClientSampleId :
 HSTDCCC750



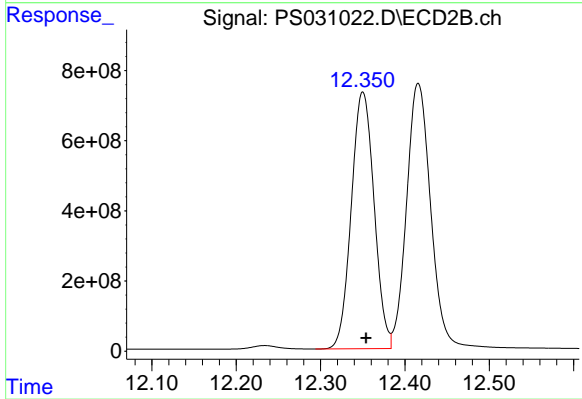
#15 Picloram

R.T.: 12.416 min
 Delta R.T.: -0.005 min
 Response: 15013669111
 Conc: 639.41 ng/ml



#16 DCPA

R.T.: 11.738 min
 Delta R.T.: 0.002 min
 Response: 17464445412
 Conc: 729.60 ng/ml



#16 DCPA

R.T.: 12.350 min
 Delta R.T.: -0.004 min
 Response: 13742643283
 Conc: 609.38 ng/ml