

Data Path : Z:\pestpcbsrv\HPCHEM1\ECD_S\Data\PS071425\
 Data File : PS031024.D
 Signal(s) : Signal #1: ECD1A.ch Signal #2: ECD2B.ch
 Acq On : 14 Jul 2025 17:38
 Operator : AR\AJ
 Sample : PB168812BS
 Misc :
 ALS Vial : 5 Sample Multiplier: 1

Instrument :
 ECD_S
 ClientSampleId :
 PB168811BS

Integration File signal 1: autoint1.e
 Integration File signal 2: autoint2.e
 Quant Time: Jul 15 01:31:04 2025
 Quant Method : Z:\pestpcbsrv\HPCHEM1\ECD_S\Method\PS071125.M
 Quant Title : 8080.M
 QLast Update : Mon Jul 14 05:51:06 2025
 Response via : Initial Calibration
 Integrator: ChemStation

Volume Inj. : 1 µl
 Signal #1 Phase : ZB-MR2 Signal #2 Phase: ZB-MR2
 Signal #1 Info : 30M x 0.32mm x0.5 Signal #2 Info : 30M x 0.32mm x 0.25µm

Compound	RT#1	RT#2	Resp#1	Resp#2	ng/ml	ng/ml
System Monitoring Compounds						
4) S 2,4-DCAA	7.332	7.766	2042.9E6	472.7E6	516.521	456.280
Target Compounds						
1) T Dalapon	2.695	2.704	2738.6E6	1195.8E6	449.553	420.631
2) T 3,5-DICHL...	6.493	6.712	2469.1E6	655.6E6	471.320	422.893
3) T 4-Nitroph...	7.132	7.299	716.9E6	736.5E6	531.009	422.308
5) T DICAMBA	7.521	7.968	7342.8E6	2788.1E6	467.967	430.501
6) T MCPP	7.701	8.065	408.8E6	90928794	44.426	42.531
7) T MCPA	7.851	8.313	508.3E6	132.4E6	46.604	41.301
8) T DICHLORPROP	8.234	8.688	1649.3E6	652.4E6	484.357	429.407
9) T 2,4-D	8.466	9.024	1708.9E6	741.7E6	555.121	436.405
10) T Pentachlo...	8.773	9.548	25804.9E6	17608.3E6	513.413	456.943
11) T 2,4,5-TP ...	9.352	9.930	9734.5E6	6559.1E6	523.058	446.936
12) T 2,4,5-T	9.647	10.357	8452.3E6	6258.4E6	555.584	447.293
13) T 2,4-DB	10.224	10.924	1257.9E6	517.7E6	579.476	437.517
14) T DINOSEB	11.439	11.309	6865.3E6	4891.7E6	520.732	430.926
15) T Picloram	11.251	12.419	8710.3E6	10779.1E6	597.745	459.062
16) T DCPA	11.736	12.352	13001.4E6	10201.6E6	543.146	452.358

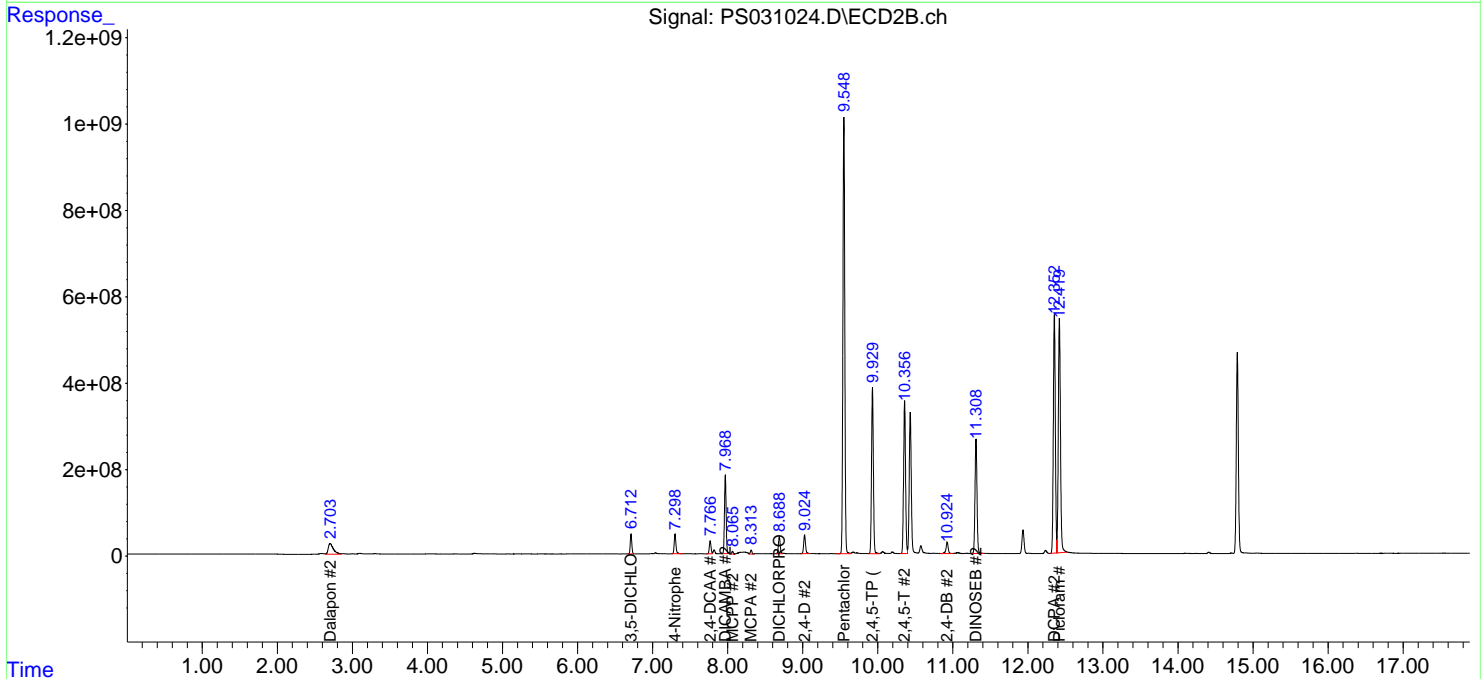
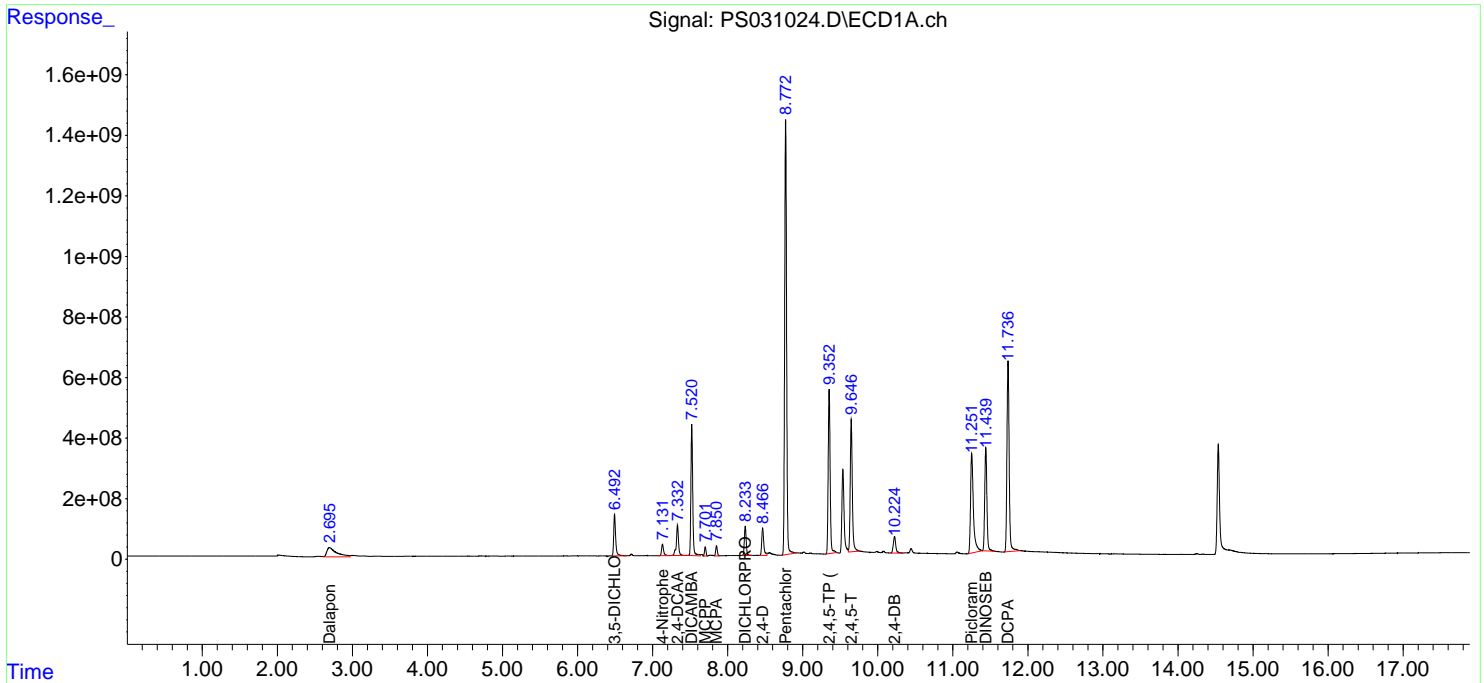
(f)=RT Delta > 1/2 Window (#)=Amounts differ by > 25% (m)=manual int.

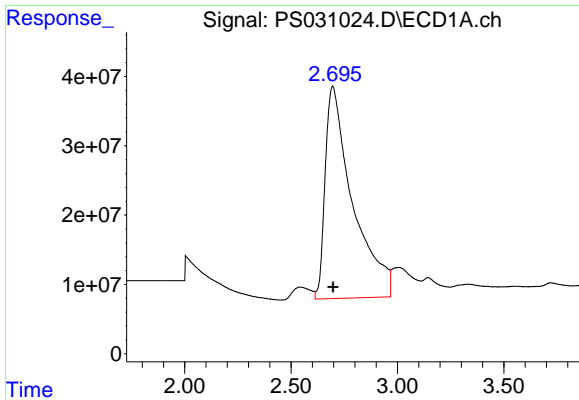
Data Path : Z:\pestpcbsrv\HPCHEM1\ECD_S\Data\PS071425\
 Data File : PS031024.D
 Signal(s) : Signal #1: ECD1A.ch Signal #2: ECD2B.ch
 Acq On : 14 Jul 2025 17:38
 Operator : AR\AJ
 Sample : PB168812BS
 Misc :
 ALS Vial : 5 Sample Multiplier: 1

Instrument :
 ECD_S
 ClientSampleId :
 PB168811BS

Integration File signal 1: autoint1.e
 Integration File signal 2: autoint2.e
 Quant Time: Jul 15 01:31:04 2025
 Quant Method : Z:\pestpcbsrv\HPCHEM1\ECD_S\Method\PS071125.M
 Quant Title : 8080.M
 QLast Update : Mon Jul 14 05:51:06 2025
 Response via : Initial Calibration
 Integrator: ChemStation

Volume Inj. : 1 µl
 Signal #1 Phase : ZB-MR1 Signal #2 Phase: ZB-MR2
 Signal #1 Info : 30M x 0.32mm x0.5 Signal #2 Info : 30M x 0.32mm x 0.25µm

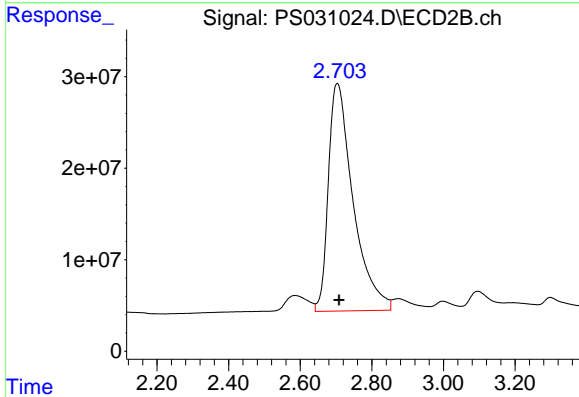




#1 Dalapon

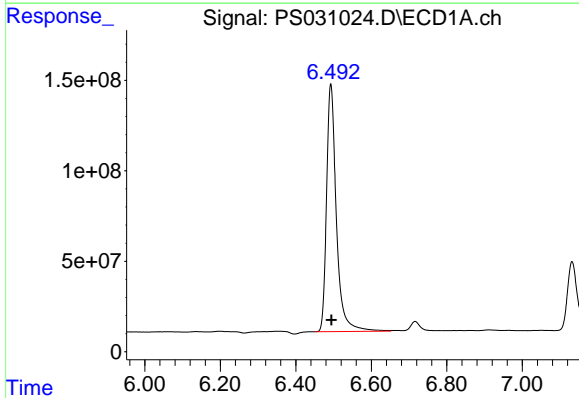
R.T.: 2.695 min
 Delta R.T.: -0.003 min
 Response: 2738552367
 Conc: 449.55 ng/ml

Instrument :
 ECD_S
 ClientSampleId :
 PB168811BS



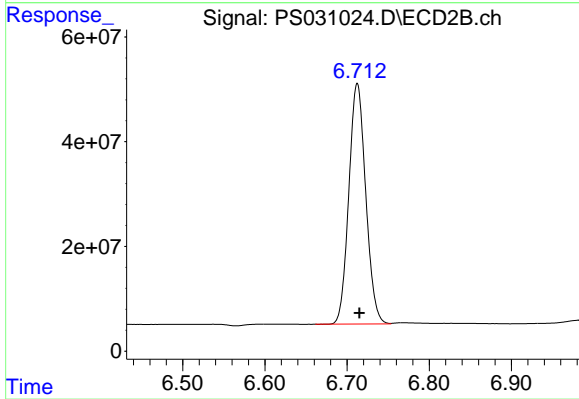
#1 Dalapon

R.T.: 2.704 min
 Delta R.T.: -0.005 min
 Response: 1195795068
 Conc: 420.63 ng/ml



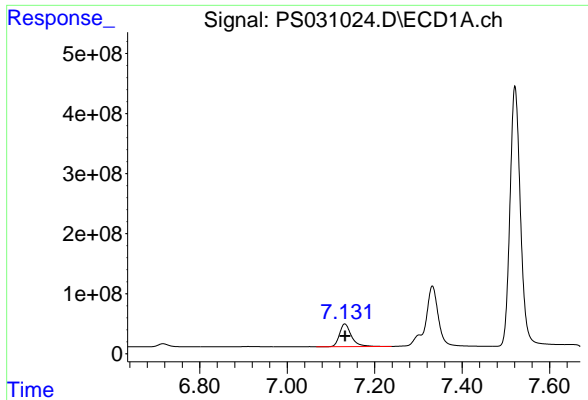
#2 3,5-DICHLOROBENZOIC ACID

R.T.: 6.493 min
 Delta R.T.: -0.001 min
 Response: 2469058178
 Conc: 471.32 ng/ml



#2 3,5-DICHLOROBENZOIC ACID

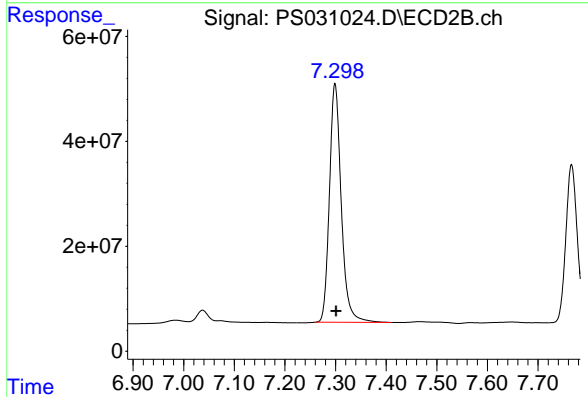
R.T.: 6.712 min
 Delta R.T.: -0.002 min
 Response: 655626752
 Conc: 422.89 ng/ml



#3 4-Nitrophenol

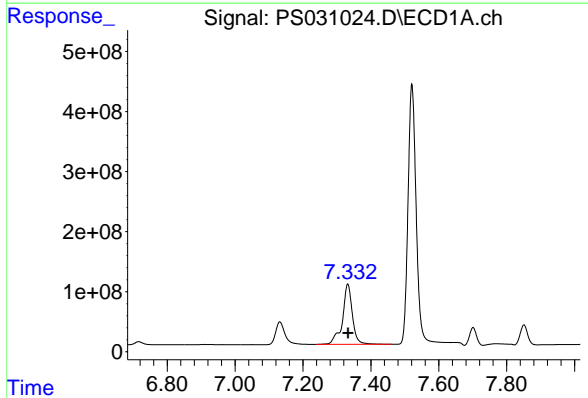
R.T.: 7.132 min
 Delta R.T.: 0.000 min
 Response: 716865758
 Conc: 531.01 ng/ml

Instrument :
 ECD_S
 ClientSampleId :
 PB168811BS



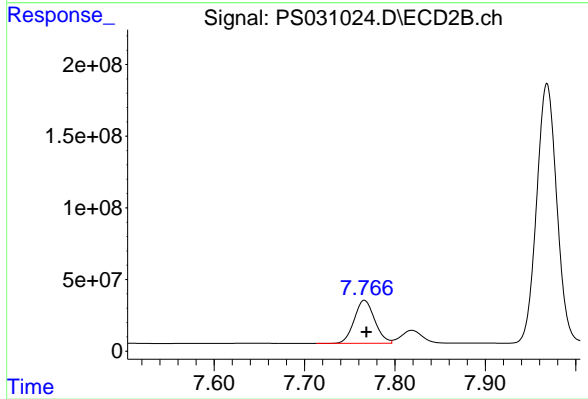
#3 4-Nitrophenol

R.T.: 7.299 min
 Delta R.T.: -0.002 min
 Response: 736457720
 Conc: 422.31 ng/ml



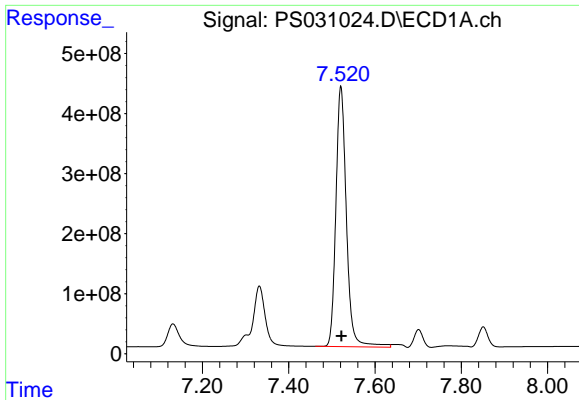
#4 2,4-DCAA

R.T.: 7.332 min
 Delta R.T.: -0.001 min
 Response: 2042880956
 Conc: 516.52 ng/ml



#4 2,4-DCAA

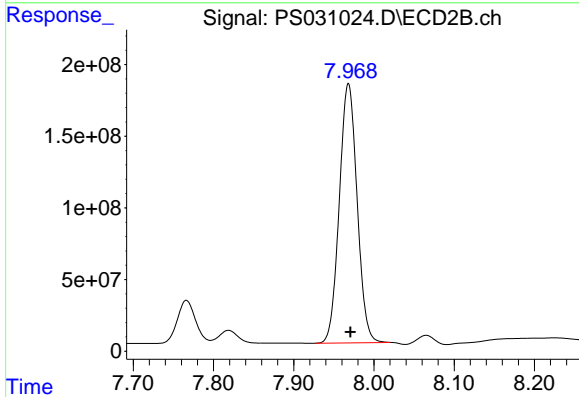
R.T.: 7.766 min
 Delta R.T.: -0.002 min
 Response: 472720454
 Conc: 456.28 ng/ml



#5 DICAMBA

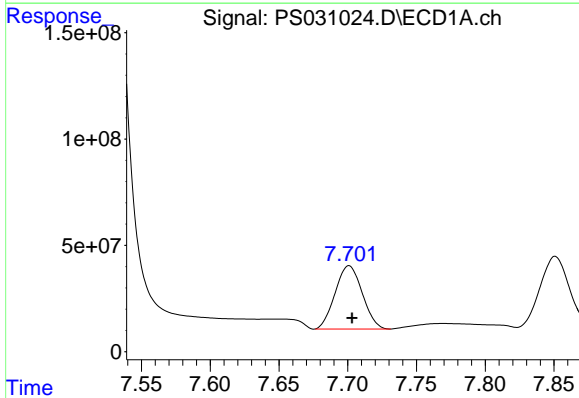
R.T.: 7.521 min
 Delta R.T.: -0.002 min
 Response: 7342823929
 Conc: 467.97 ng/ml

Instrument :
 ECD_S
 ClientSampleId :
 PB168811BS



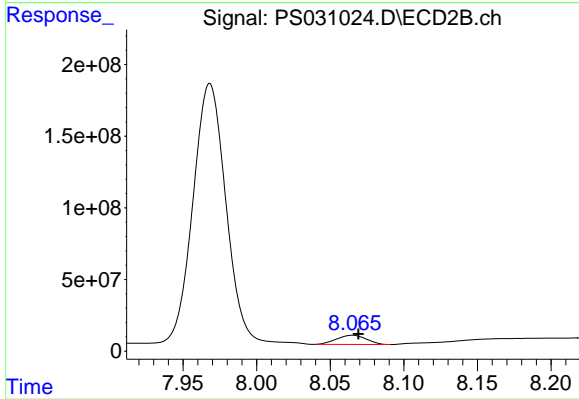
#5 DICAMBA

R.T.: 7.968 min
 Delta R.T.: -0.002 min
 Response: 2788106302
 Conc: 430.50 ng/ml



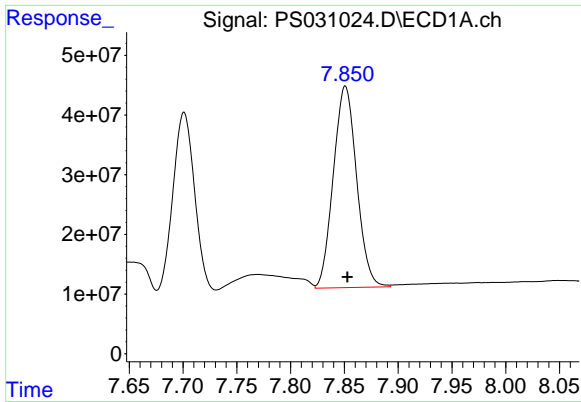
#6 MCPP

R.T.: 7.701 min
 Delta R.T.: -0.002 min
 Response: 408777639
 Conc: 44.43 ug/ml



#6 MCPP

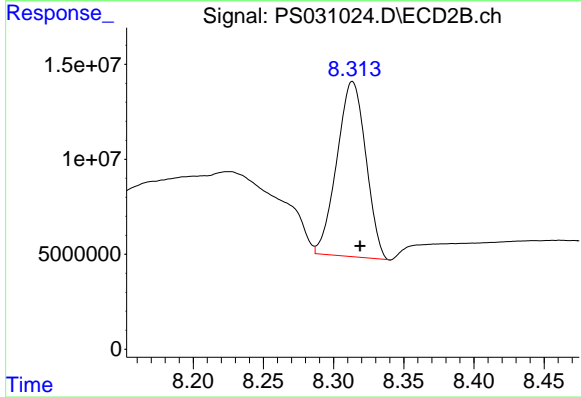
R.T.: 8.065 min
 Delta R.T.: -0.004 min
 Response: 90928794
 Conc: 42.53 ug/ml



#7 MCPA

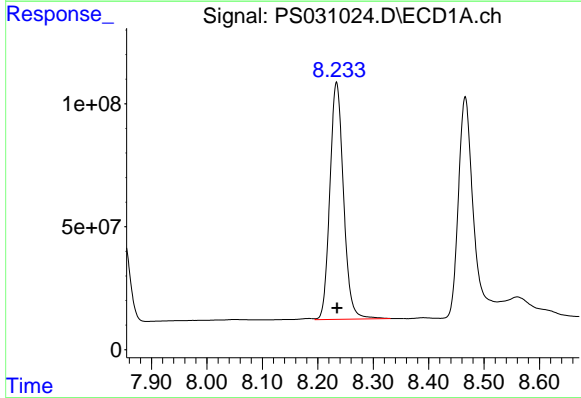
R.T.: 7.851 min
 Delta R.T.: -0.002 min
 Response: 508297487
 Conc: 46.60 ug/ml

Instrument :
 ECD_S
 ClientSampleId :
 PB168811BS



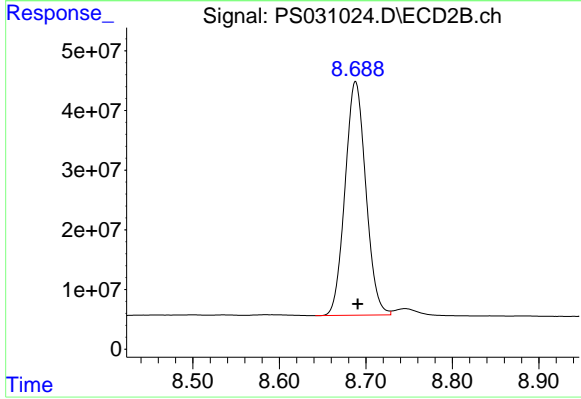
#7 MCPA

R.T.: 8.313 min
 Delta R.T.: -0.005 min
 Response: 132395871
 Conc: 41.30 ug/ml



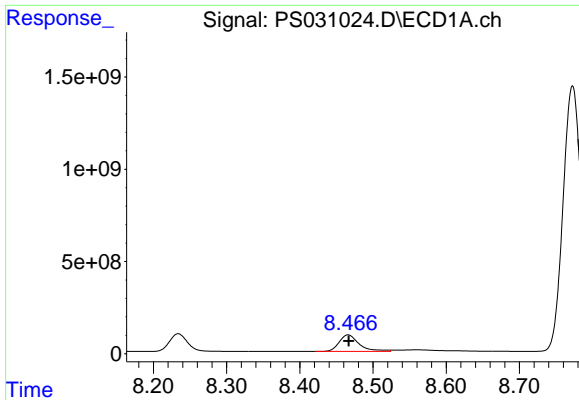
#8 DICHLORPROP

R.T.: 8.234 min
 Delta R.T.: 0.000 min
 Response: 1649311843
 Conc: 484.36 ng/ml



#8 DICHLORPROP

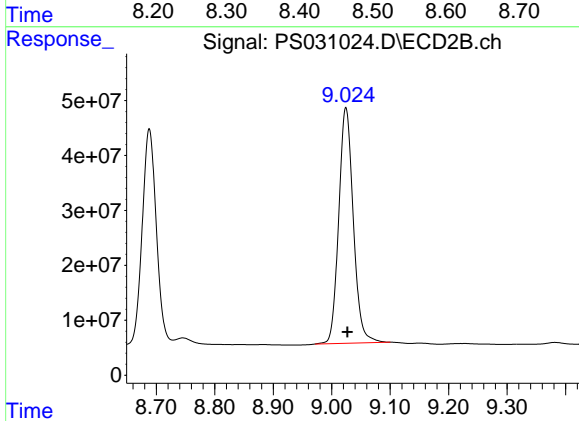
R.T.: 8.688 min
 Delta R.T.: -0.002 min
 Response: 652381867
 Conc: 429.41 ng/ml



#9 2,4-D

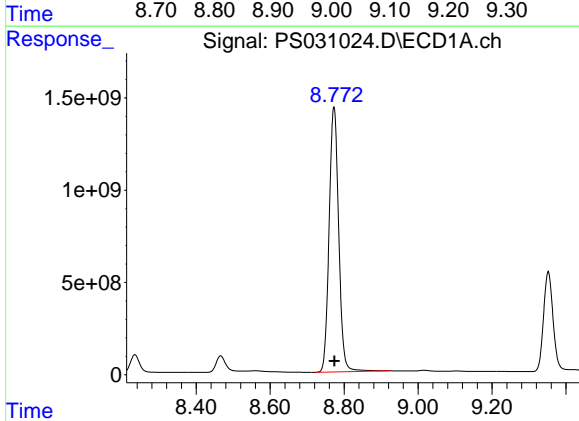
R.T.: 8.466 min
 Delta R.T.: 0.000 min
 Response: 1708905898
 Conc: 555.12 ng/ml

Instrument :
 ECD_S
 ClientSampleId :
 PB168811BS



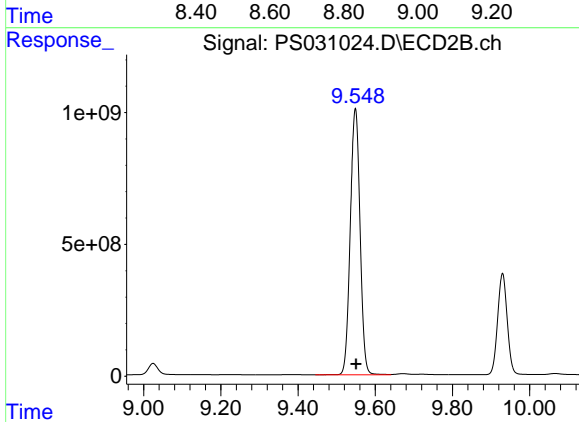
#9 2,4-D

R.T.: 9.024 min
 Delta R.T.: -0.003 min
 Response: 741654654
 Conc: 436.40 ng/ml



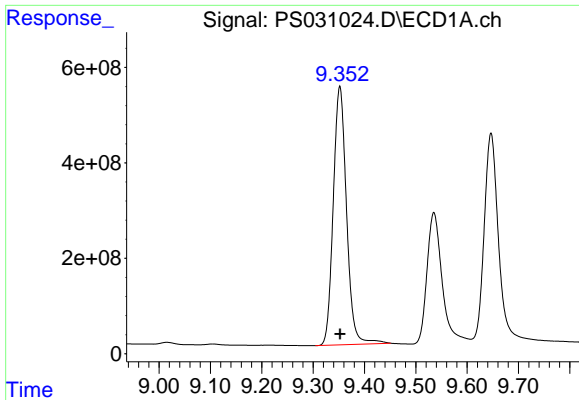
#10 Pentachlorophenol

R.T.: 8.773 min
 Delta R.T.: 0.000 min
 Response: 25804931732
 Conc: 513.41 ng/ml



#10 Pentachlorophenol

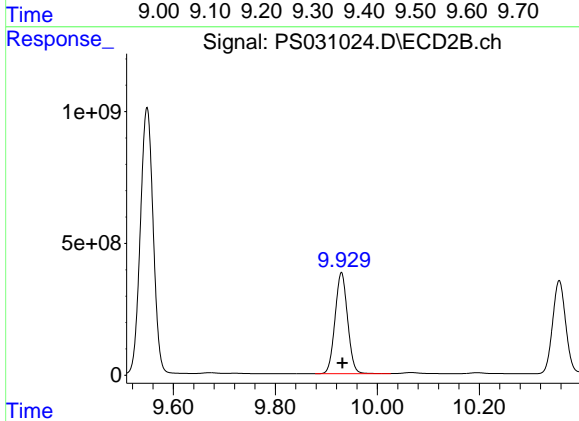
R.T.: 9.548 min
 Delta R.T.: -0.002 min
 Response: 17608317012
 Conc: 456.94 ng/ml



#11 2,4,5-TP (SILVEX)

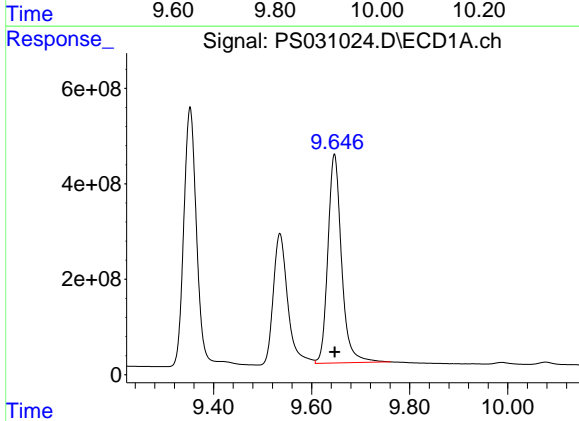
R.T.: 9.352 min
 Delta R.T.: 0.000 min
 Response: 9734491994
 Conc: 523.06 ng/ml

Instrument :
 ECD_S
 ClientSampleId :
 PB168811BS



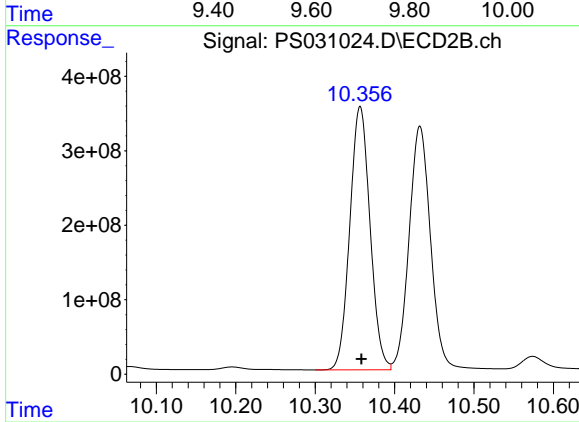
#11 2,4,5-TP (SILVEX)

R.T.: 9.930 min
 Delta R.T.: -0.002 min
 Response: 6559126769
 Conc: 446.94 ng/ml



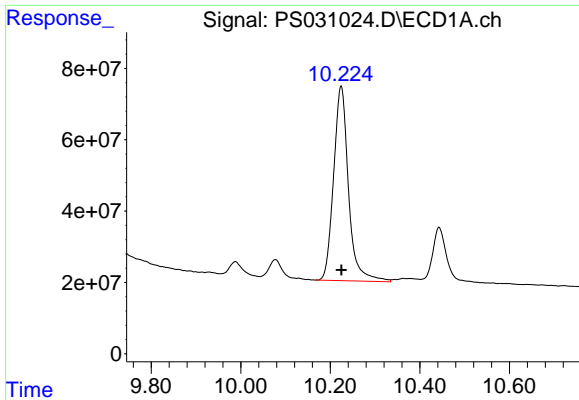
#12 2,4,5-T

R.T.: 9.647 min
 Delta R.T.: 0.000 min
 Response: 8452276814
 Conc: 555.58 ng/ml



#12 2,4,5-T

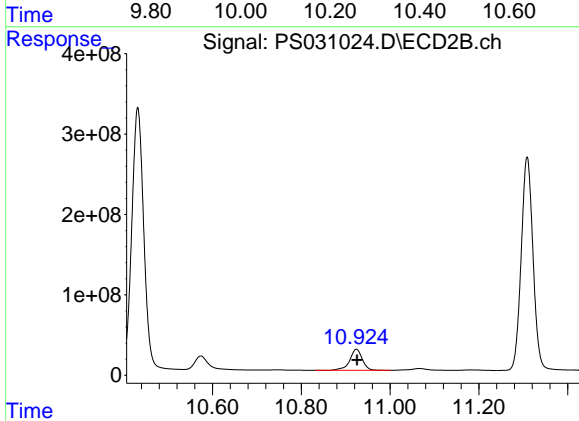
R.T.: 10.357 min
 Delta R.T.: -0.002 min
 Response: 6258439558
 Conc: 447.29 ng/ml



#13 2,4-DB

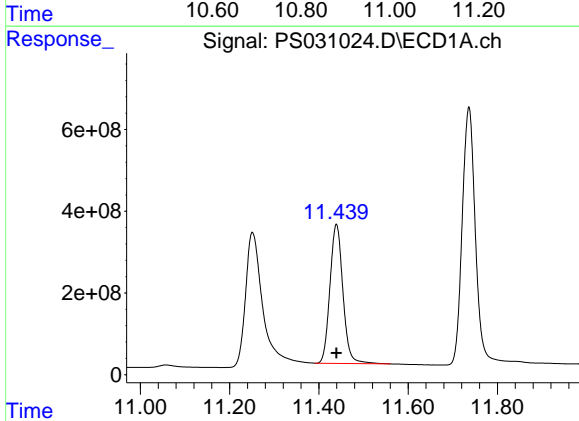
R.T.: 10.224 min
 Delta R.T.: 0.000 min
 Response: 1257921239
 Conc: 579.48 ng/ml

Instrument :
 ECD_S
 ClientSampleId :
 PB168811BS



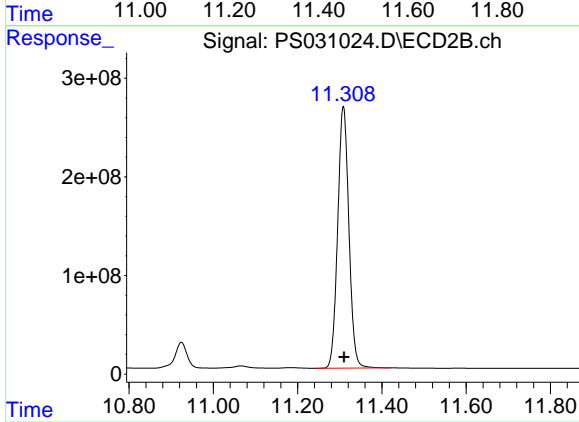
#13 2,4-DB

R.T.: 10.924 min
 Delta R.T.: -0.002 min
 Response: 517662416
 Conc: 437.52 ng/ml



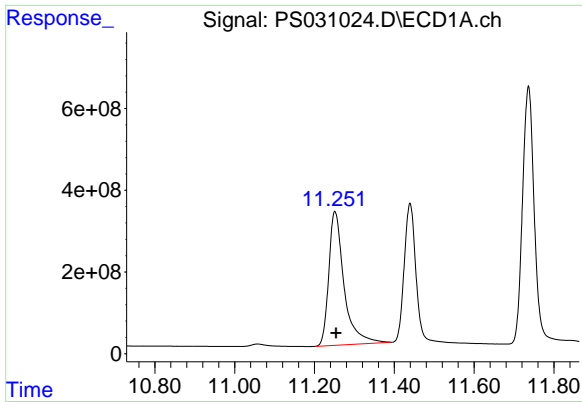
#14 DINOSEB

R.T.: 11.439 min
 Delta R.T.: 0.000 min
 Response: 6865273971
 Conc: 520.73 ng/ml



#14 DINOSEB

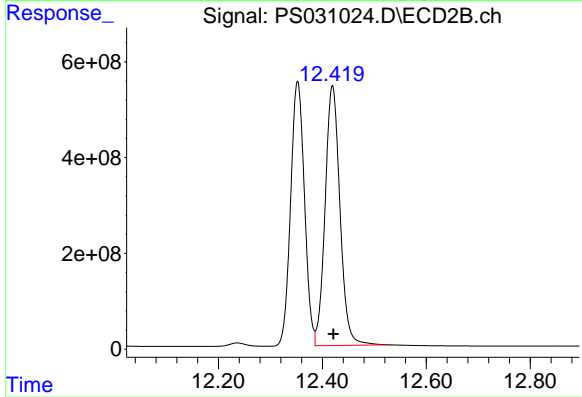
R.T.: 11.309 min
 Delta R.T.: -0.002 min
 Response: 4891663735
 Conc: 430.93 ng/ml



#15 Picloram

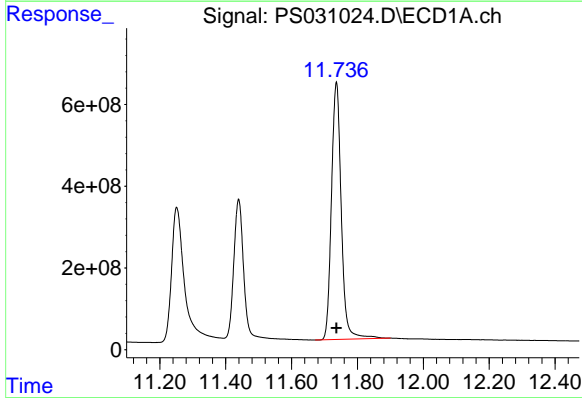
R.T.: 11.251 min
 Delta R.T.: -0.003 min
 Response: 8710309139
 Conc: 597.74 ng/ml

Instrument :
 ECD_S
 ClientSampleId :
 PB168811BS



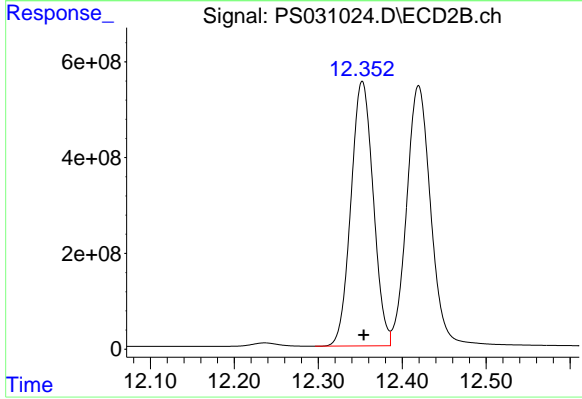
#15 Picloram

R.T.: 12.419 min
 Delta R.T.: -0.002 min
 Response: 10779088425
 Conc: 459.06 ng/ml



#16 DCPA

R.T.: 11.736 min
 Delta R.T.: 0.000 min
 Response: 13001386984
 Conc: 543.15 ng/ml



#16 DCPA

R.T.: 12.352 min
 Delta R.T.: -0.002 min
 Response: 10201564404
 Conc: 452.36 ng/ml